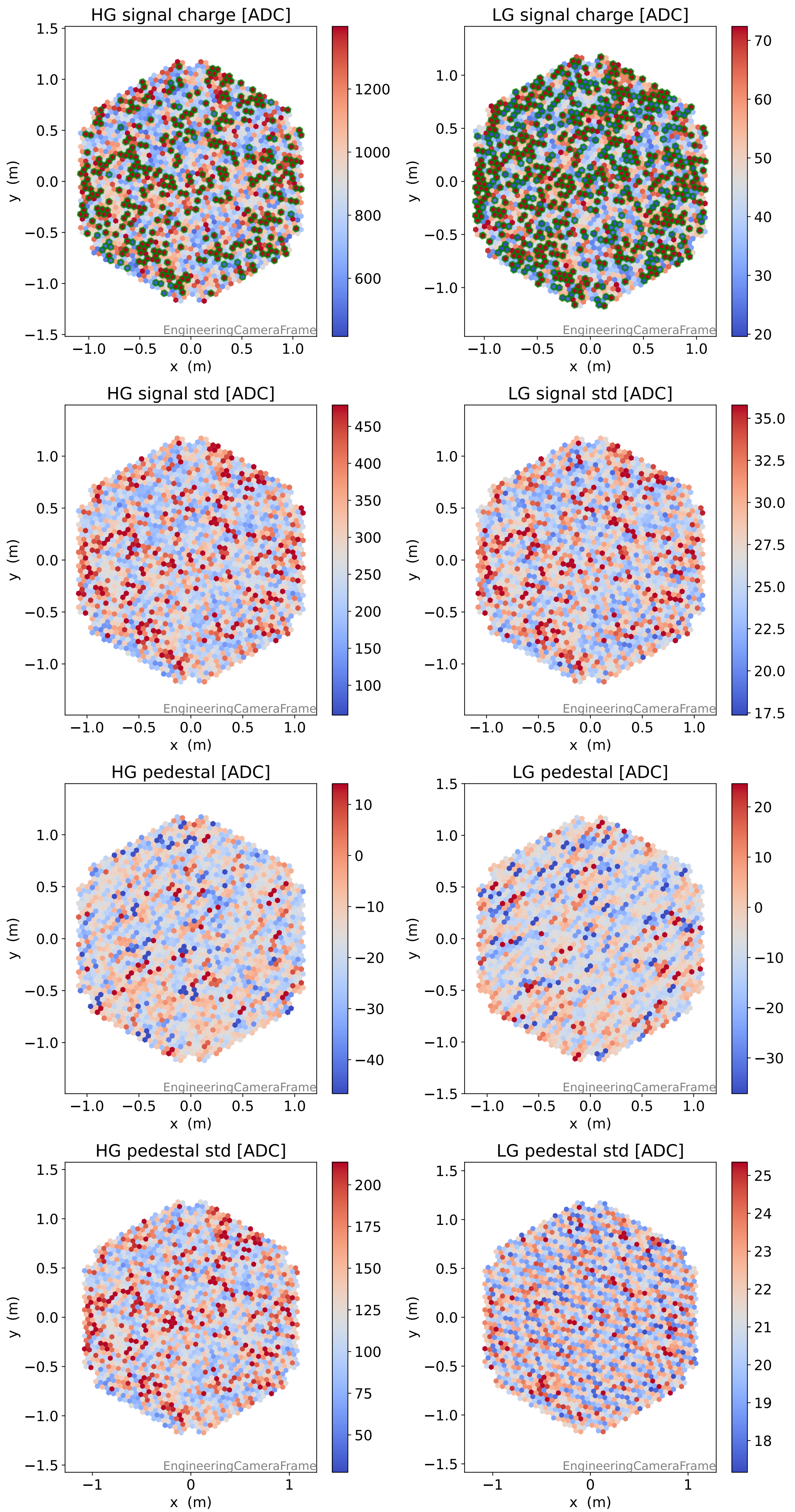
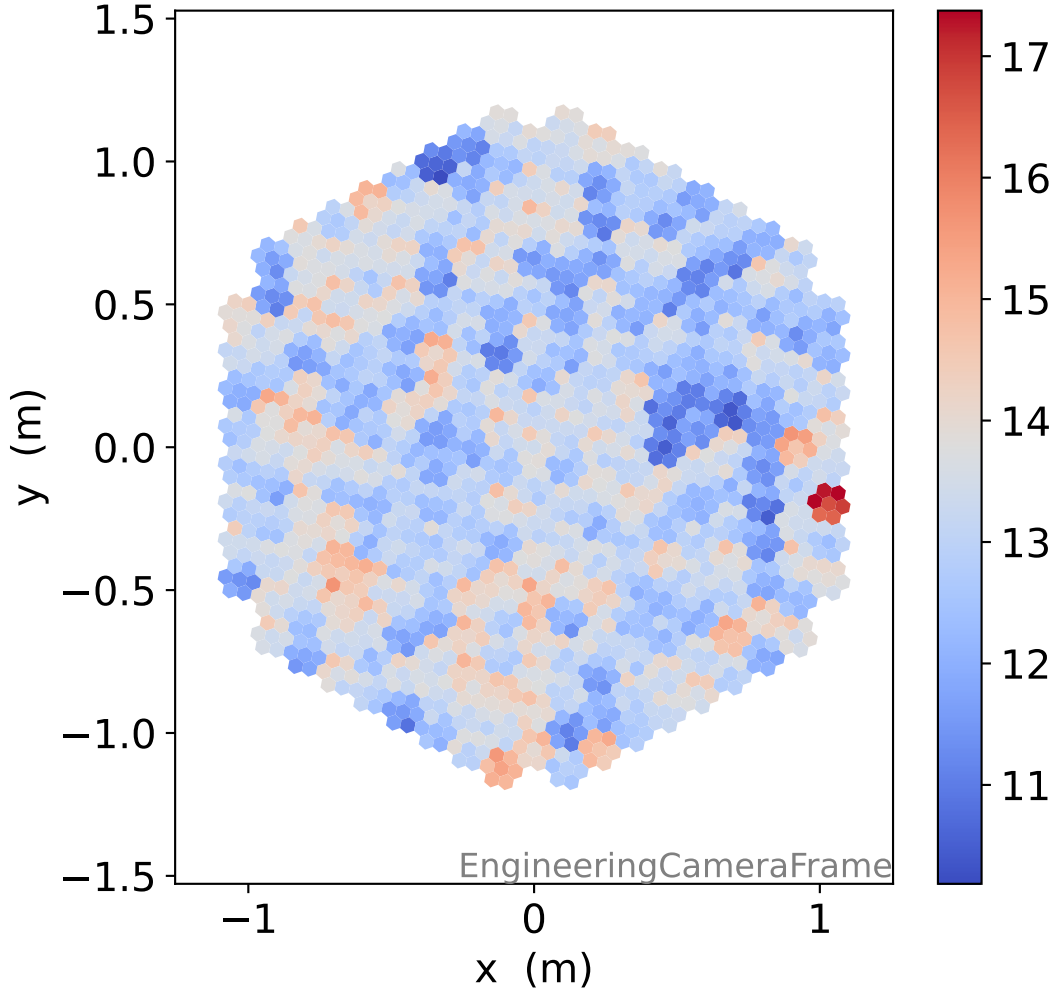


# Run 24185, Cat-A calibration

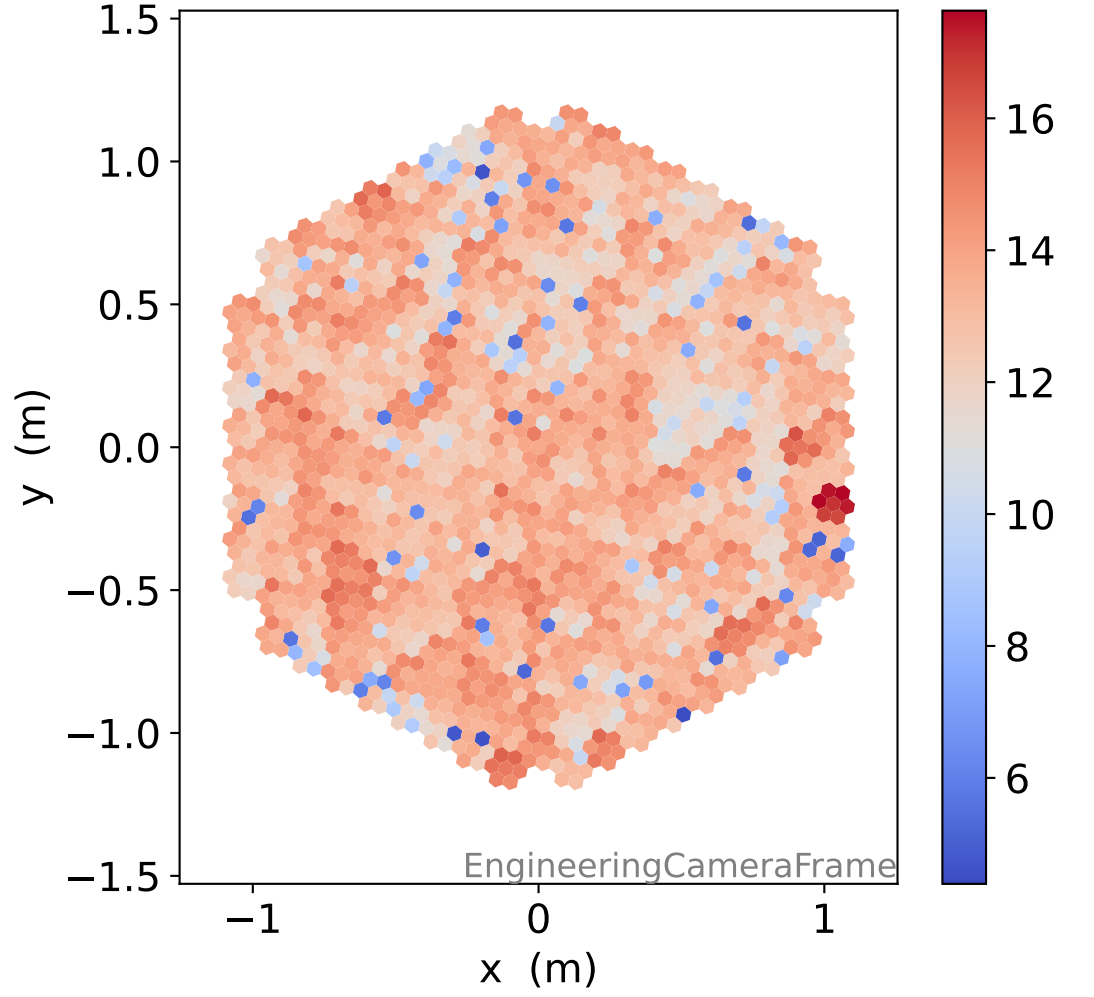


# Run 24185

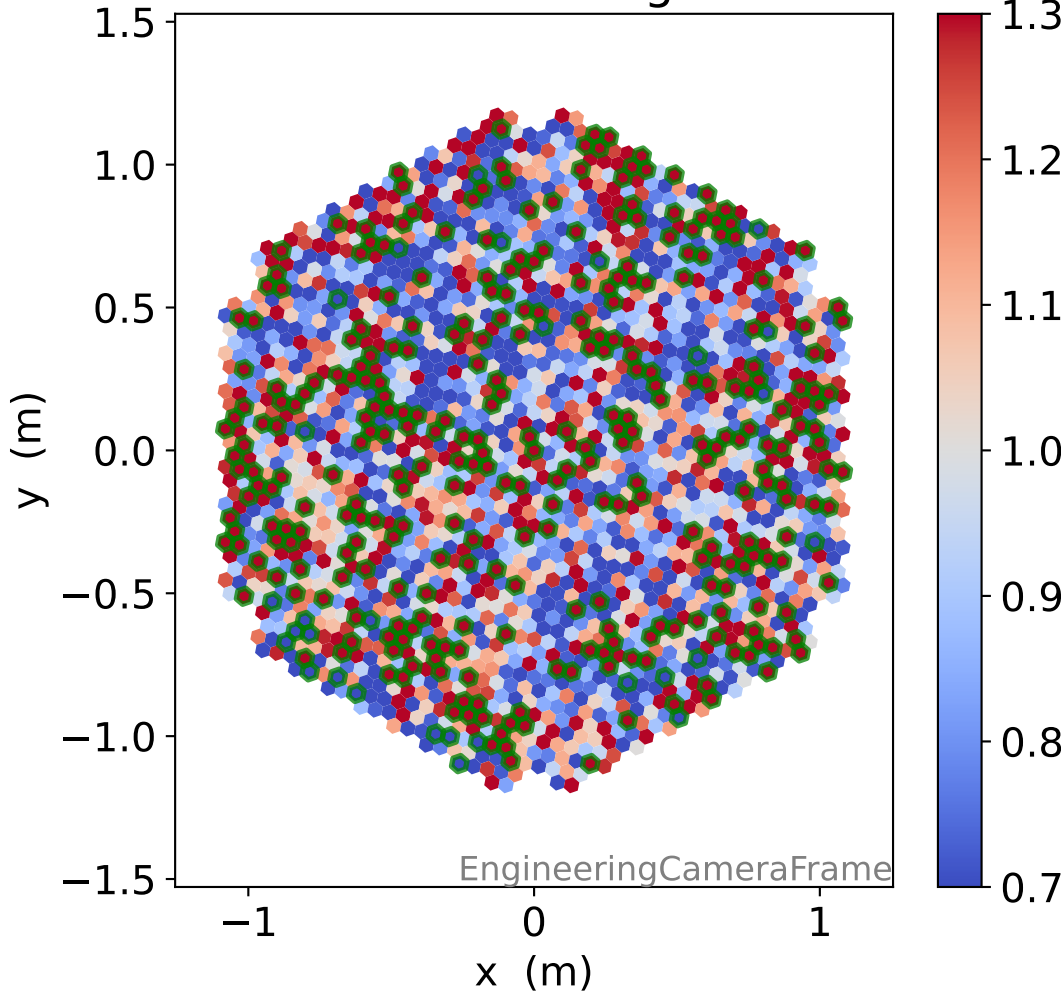
### HG time



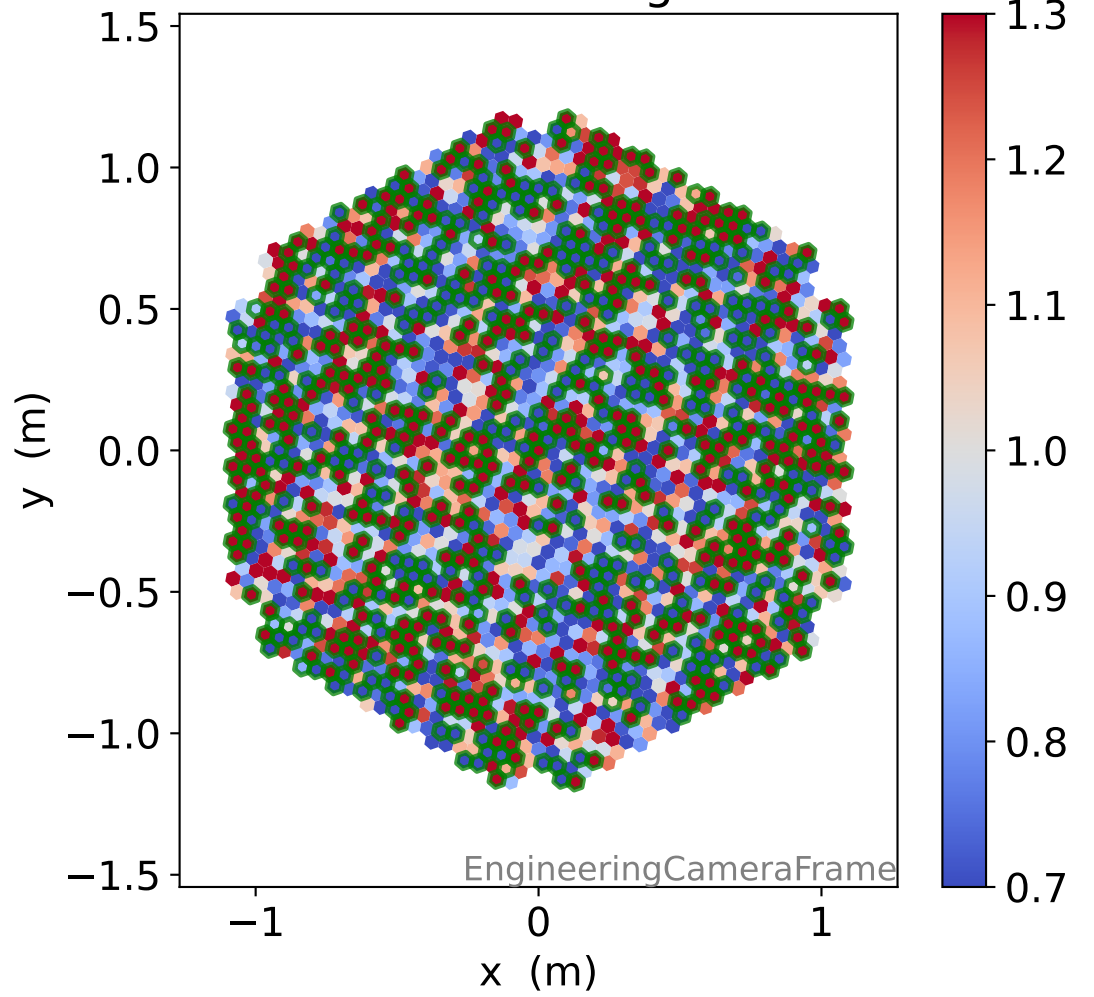
### LG time



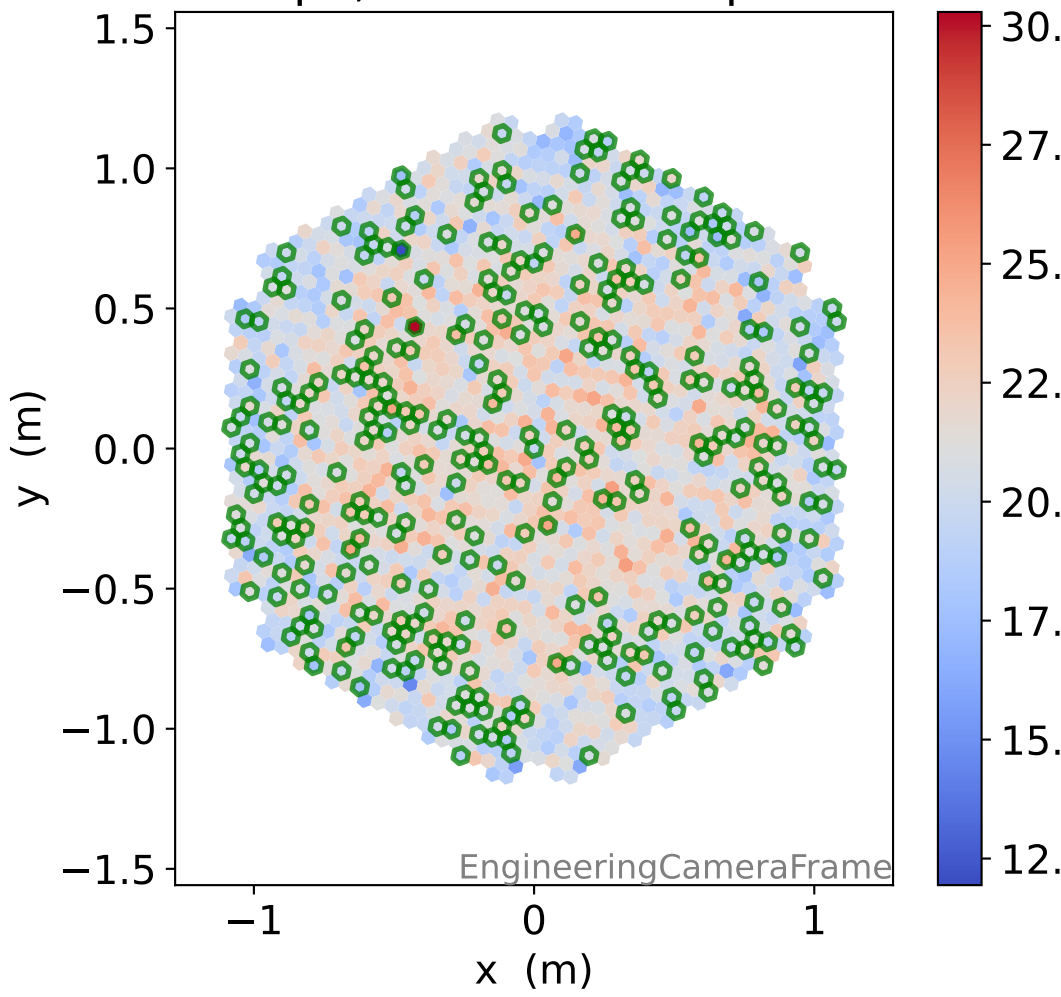
### HG relative signal



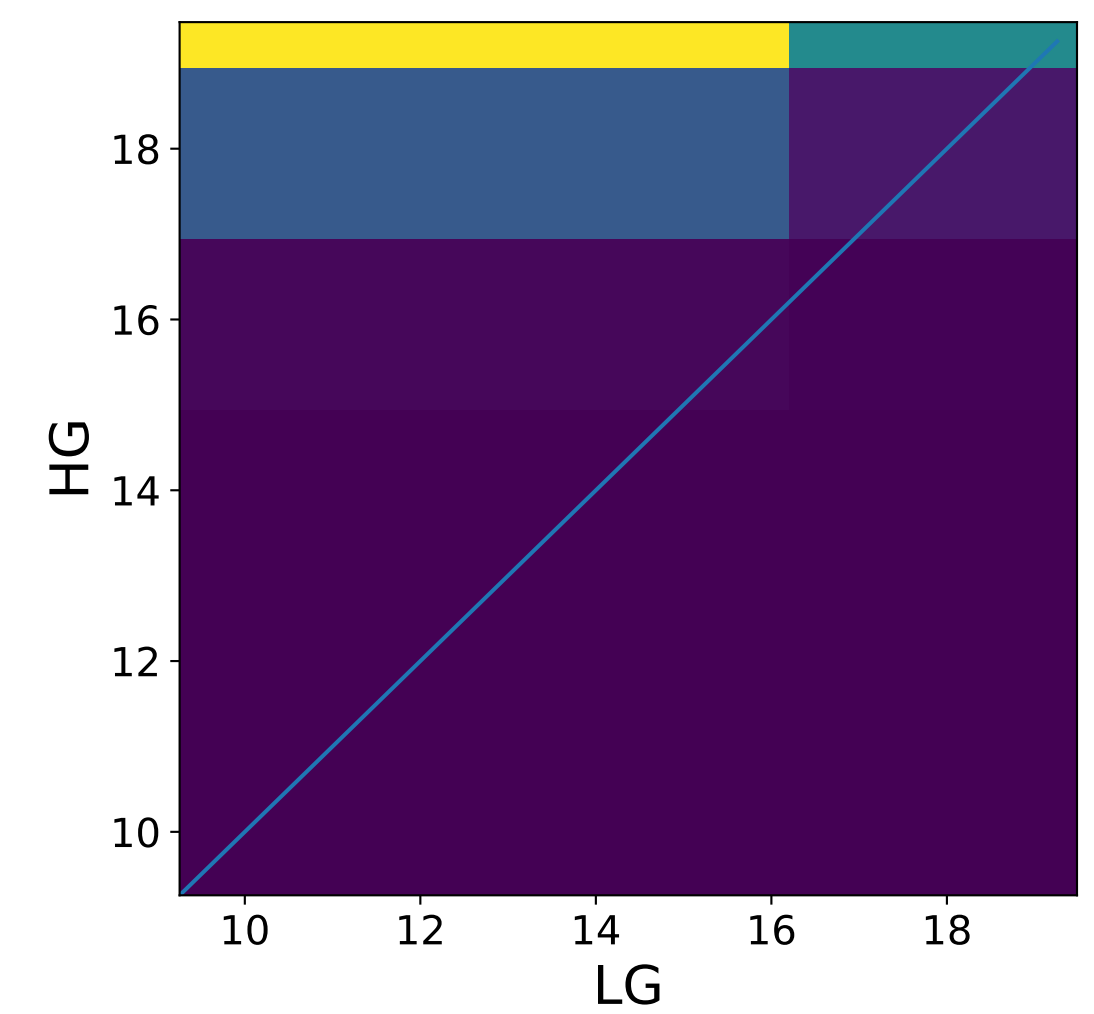
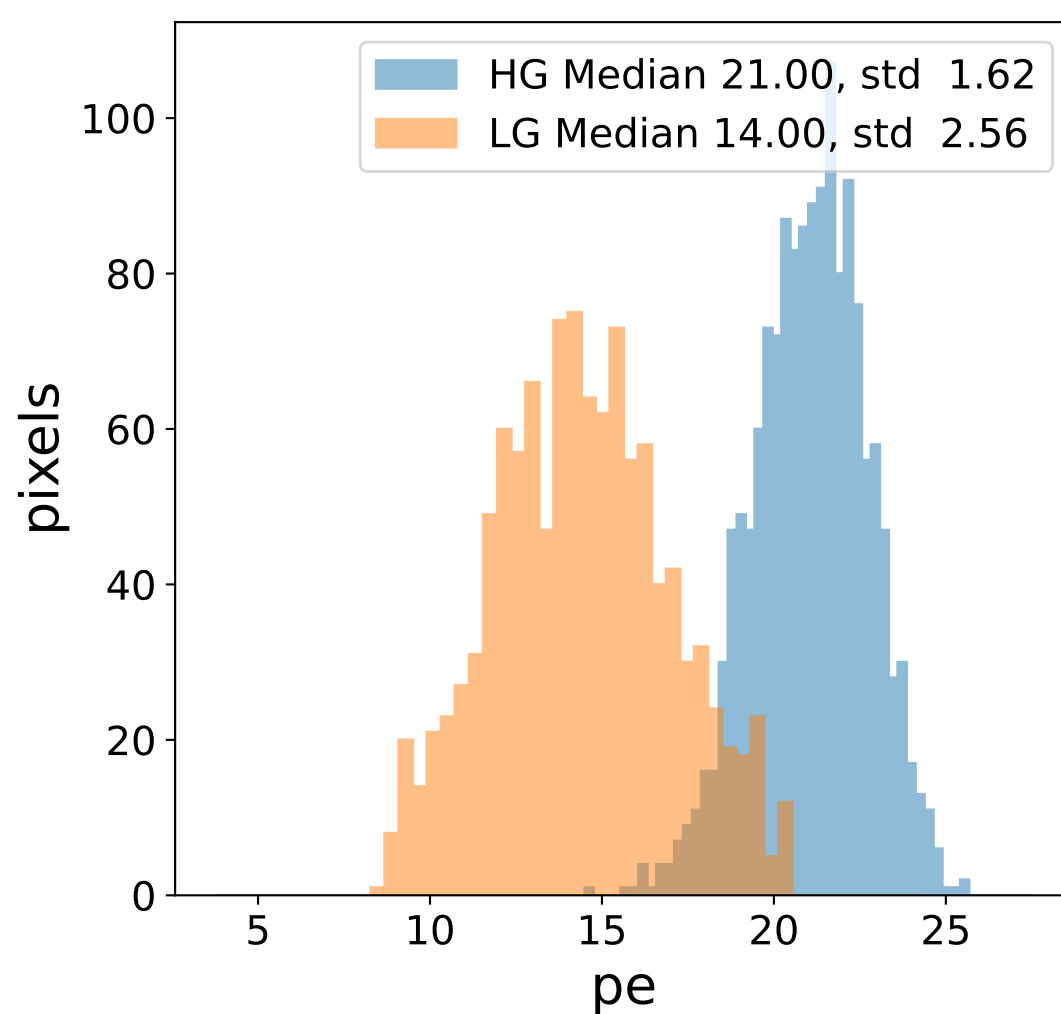
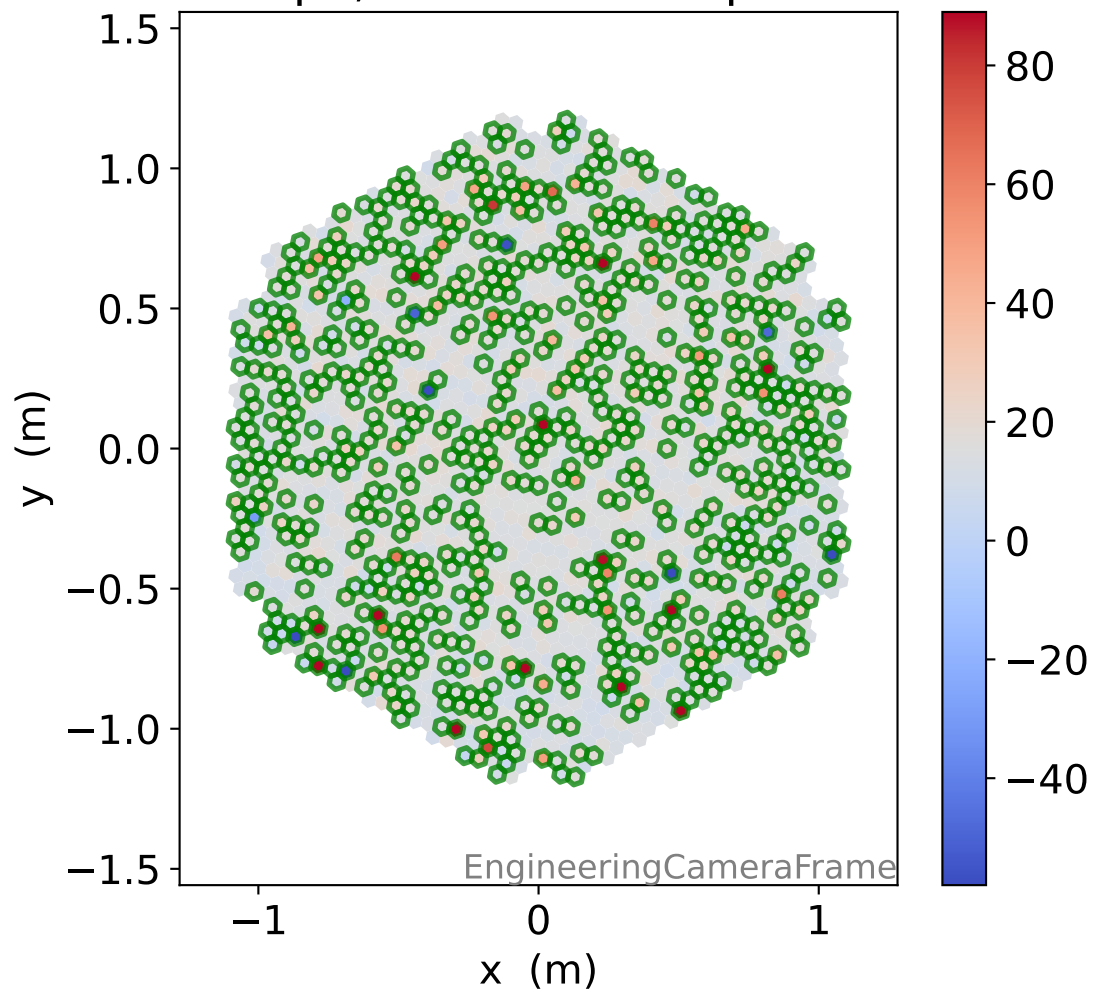
### LG relative signal



### HG pe, 341 unusable pixels

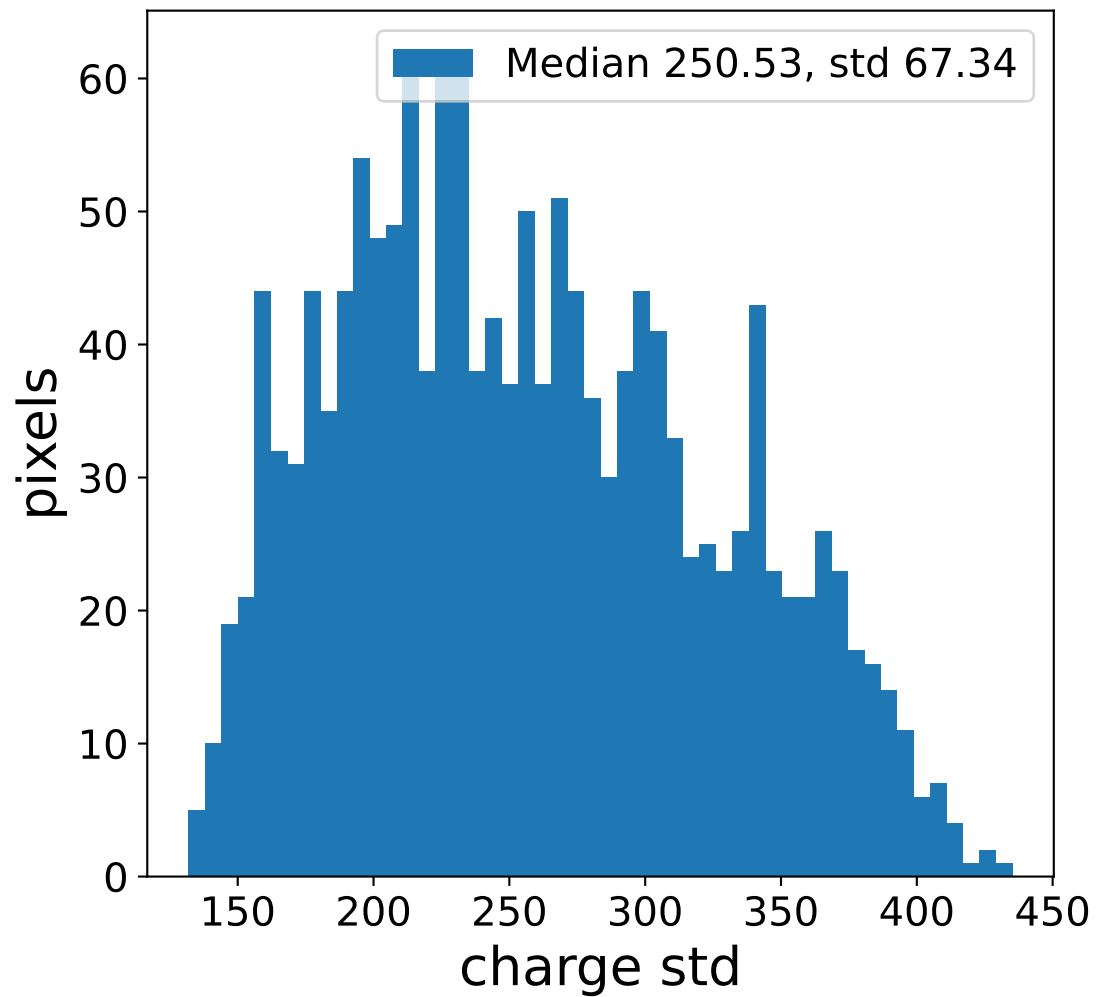
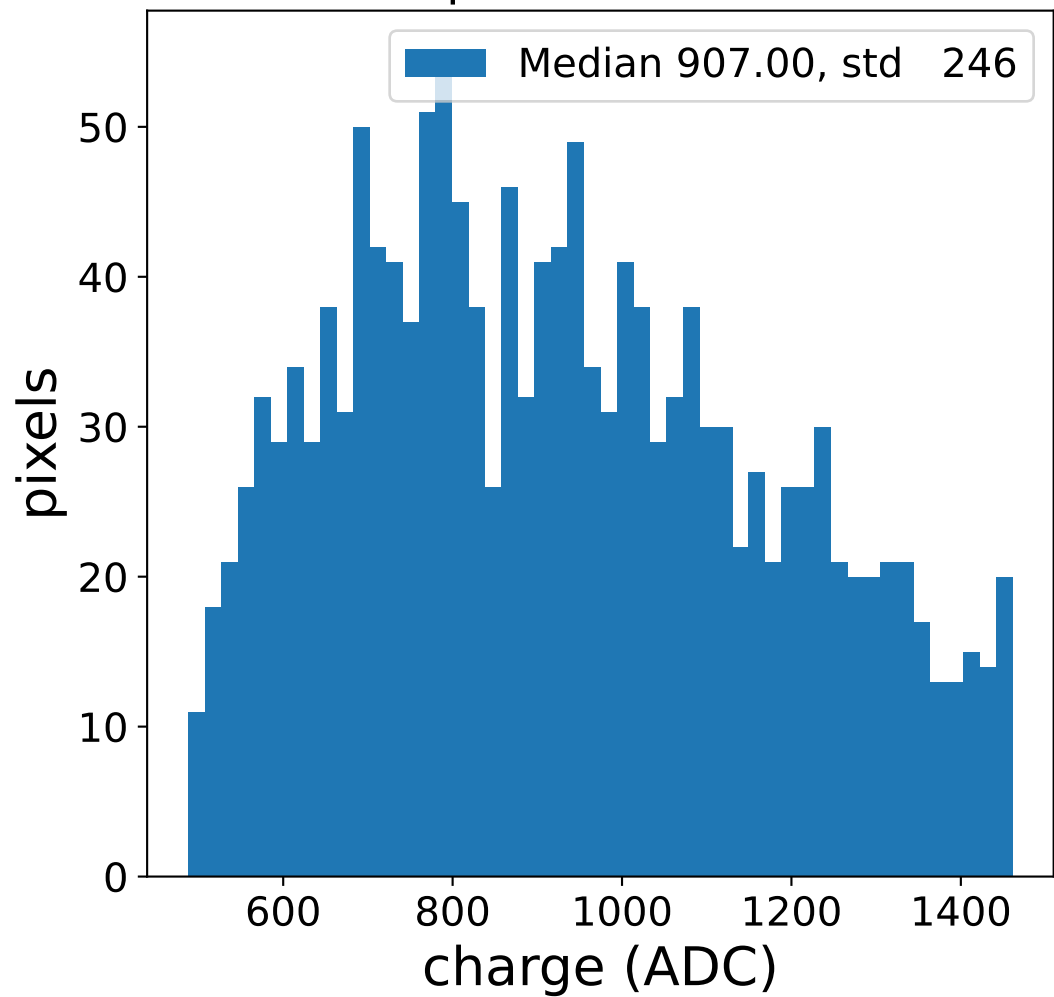


### LG pe, 724 unusable pixels

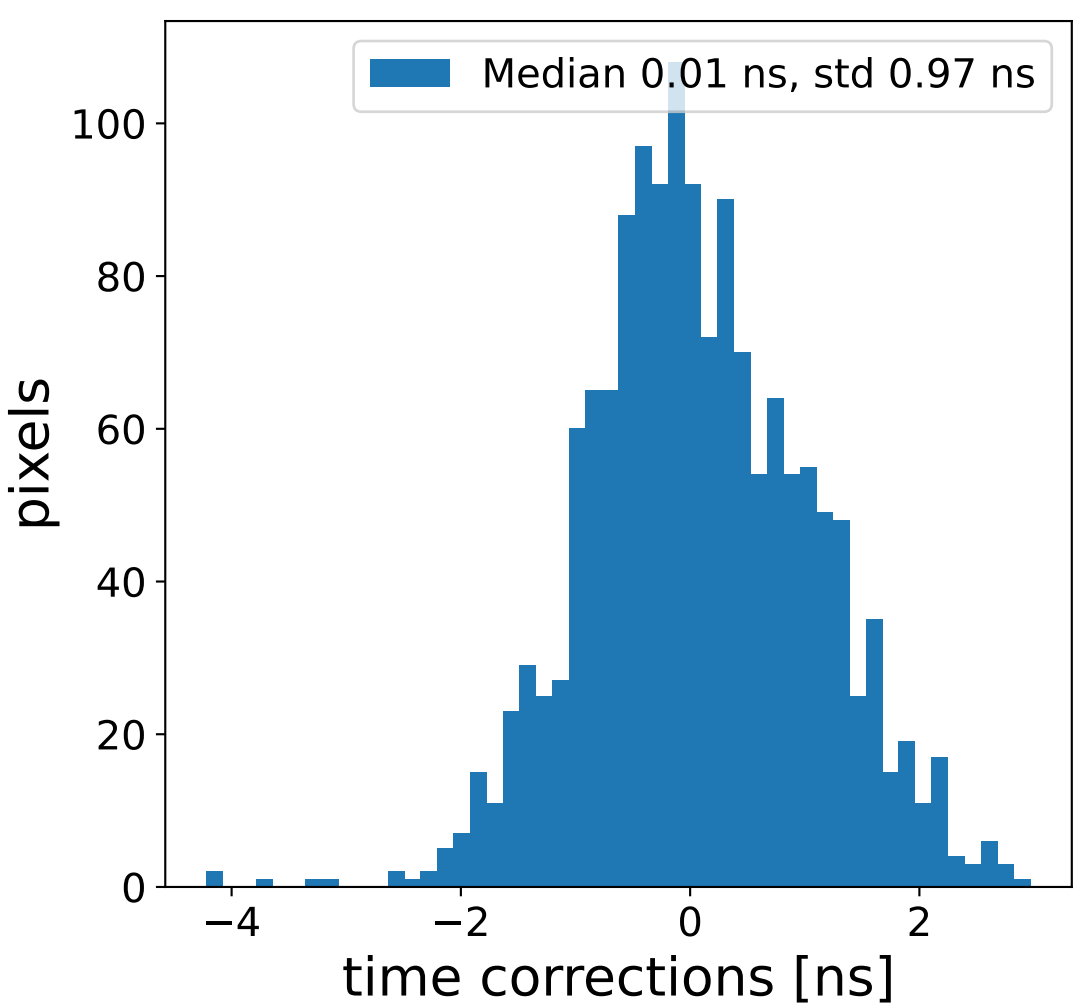
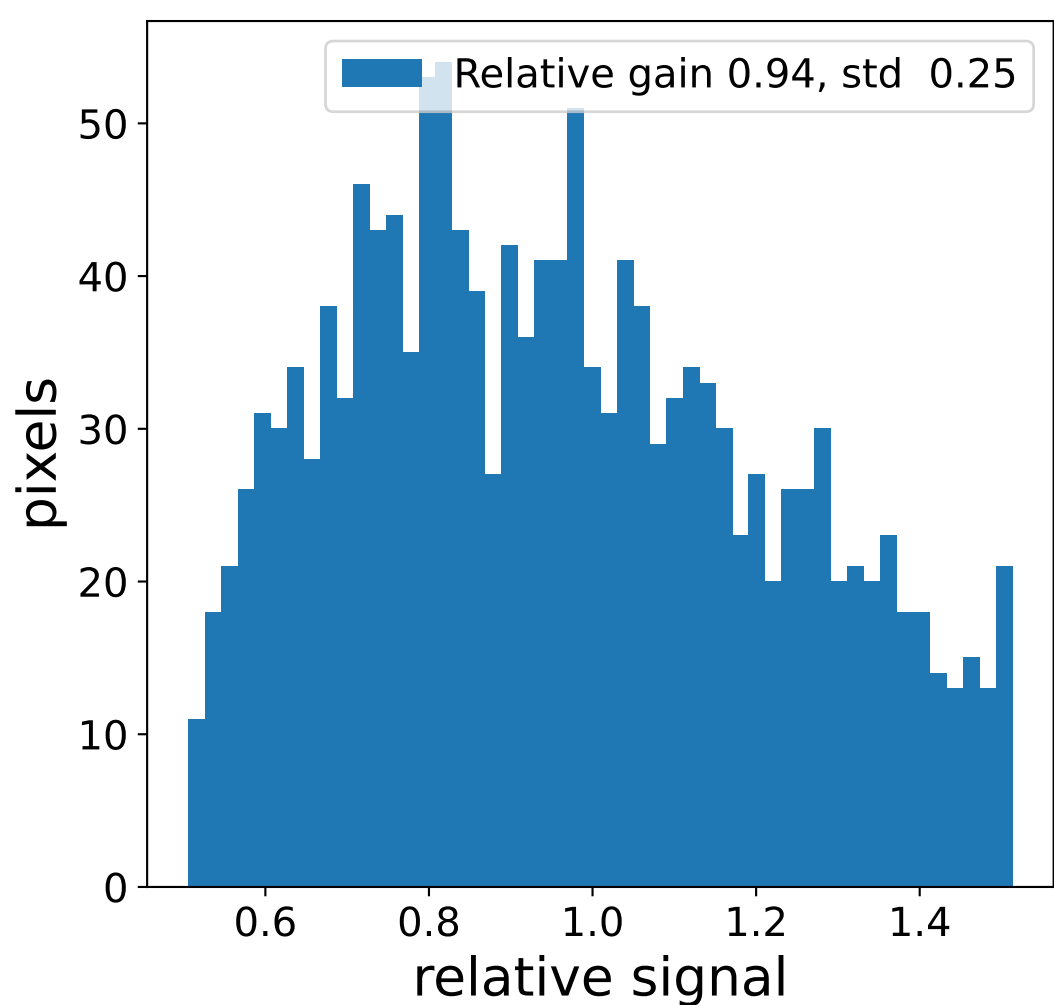
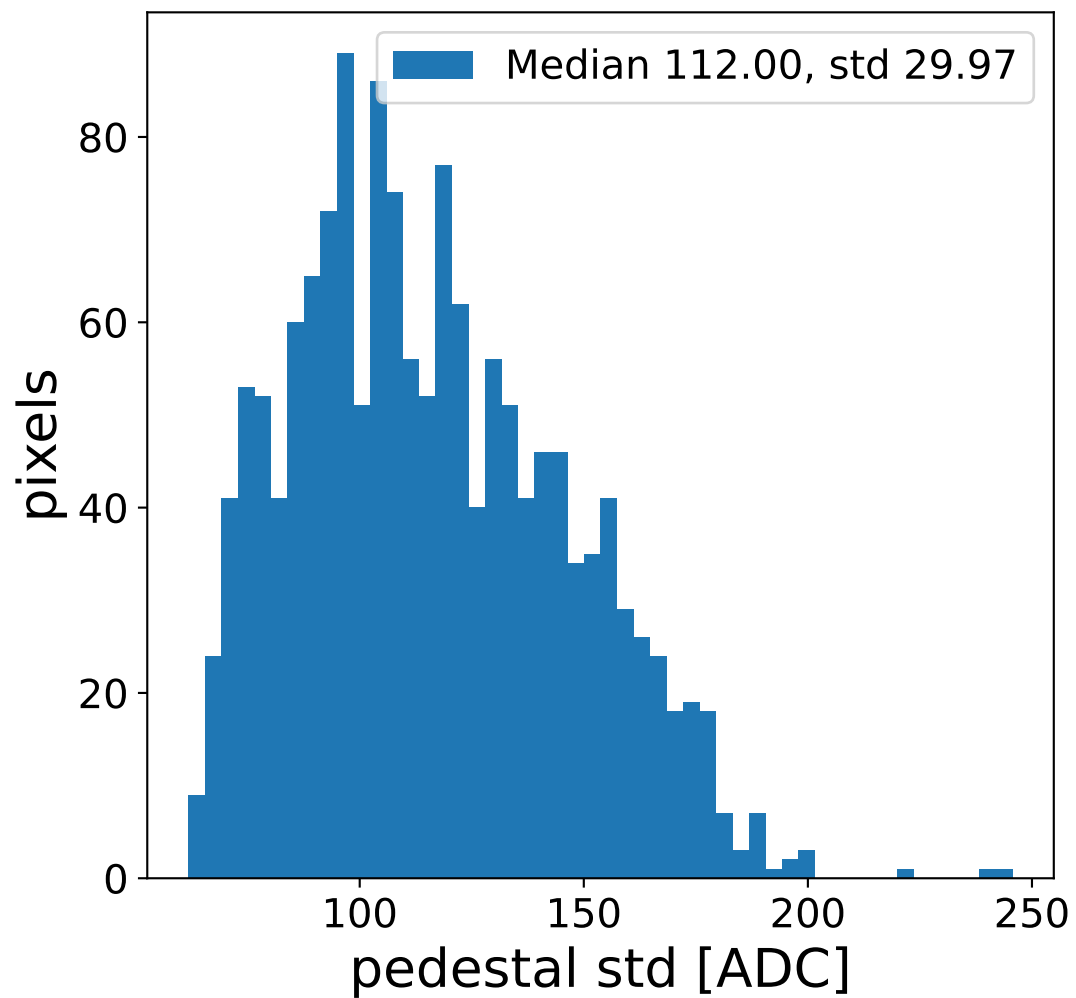
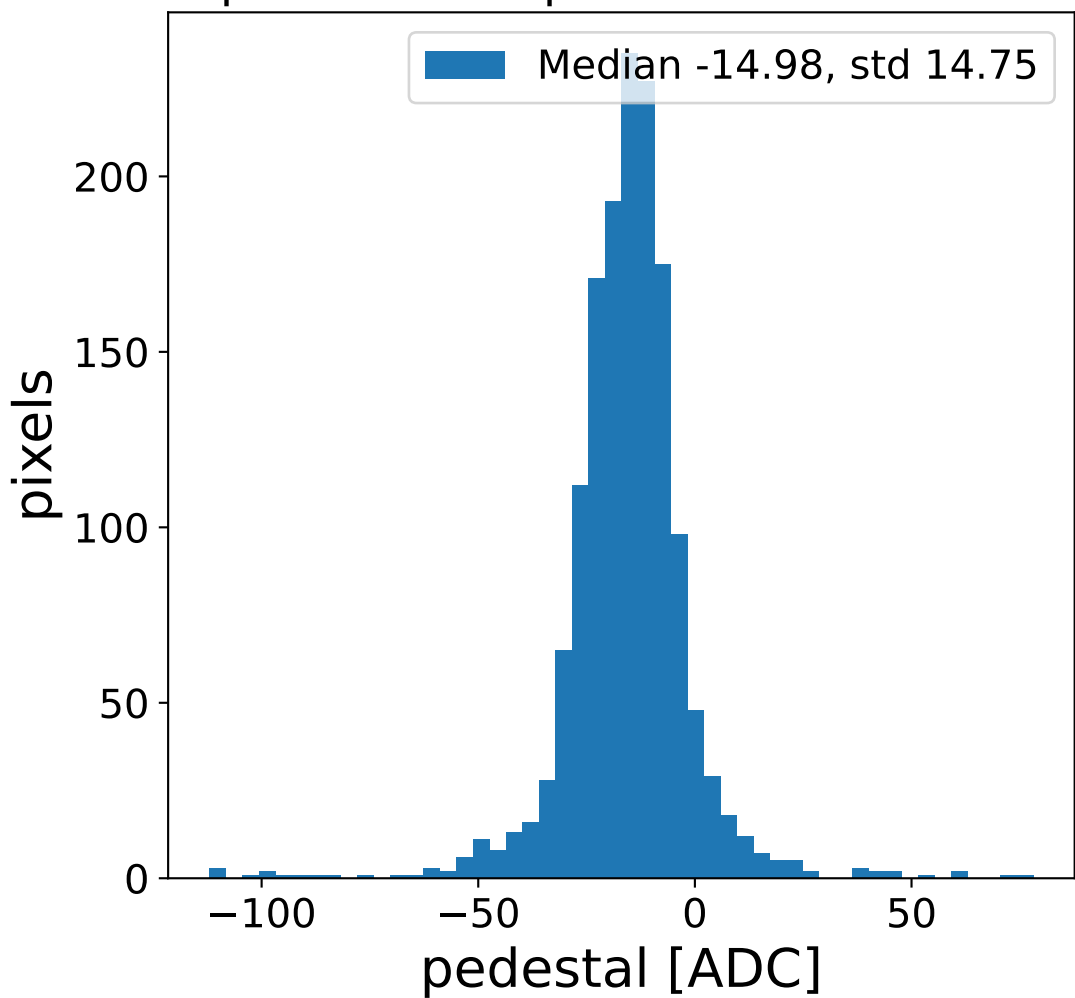


# Run 24185 channel: HG

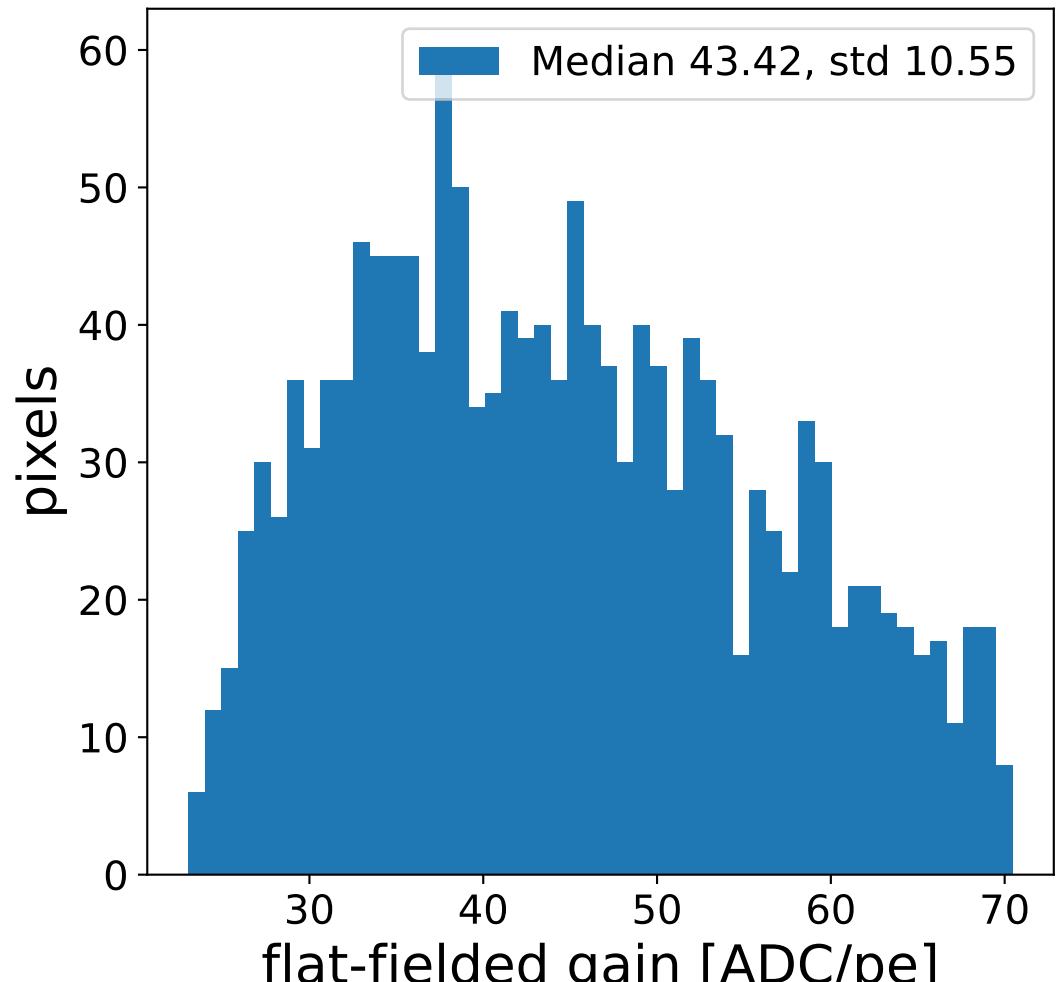
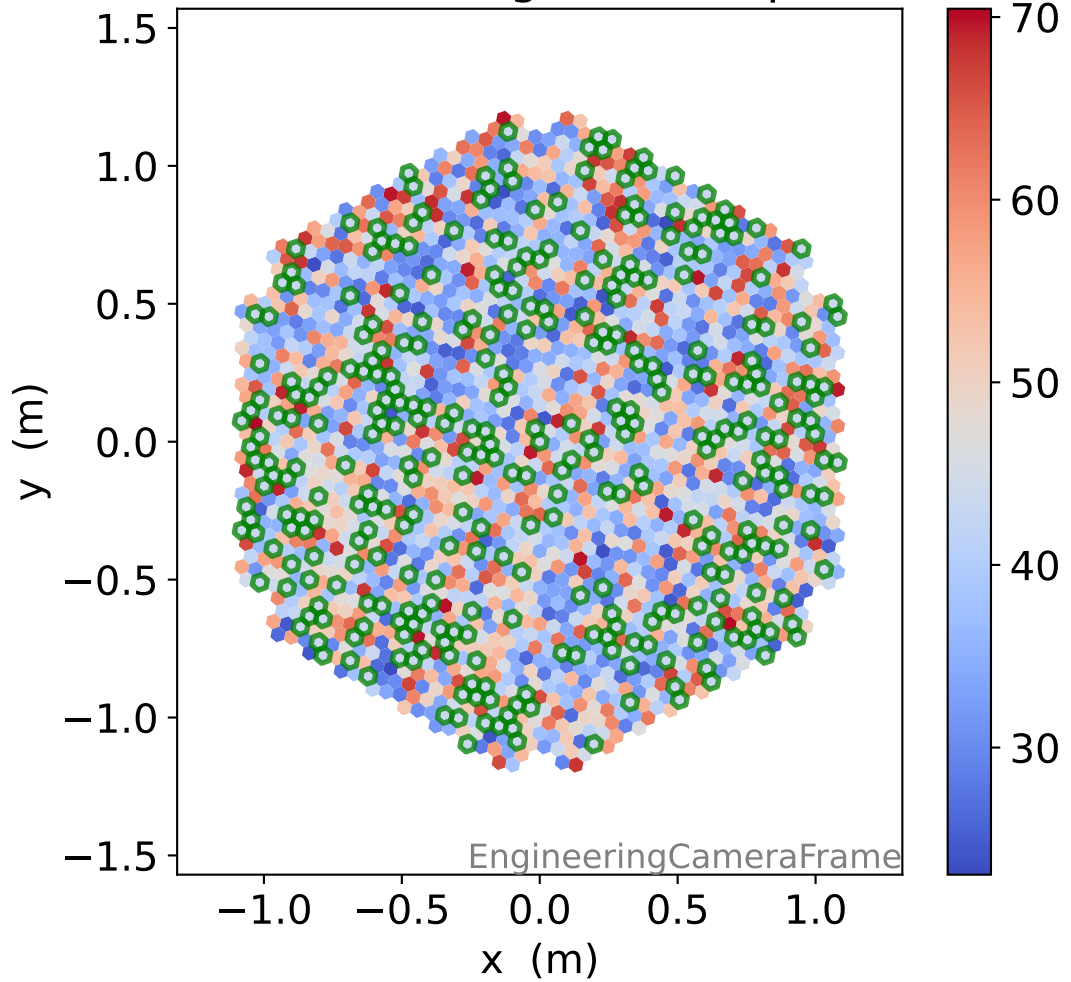
### FF sample of 10000 events



### pedestal sample of 10000 events

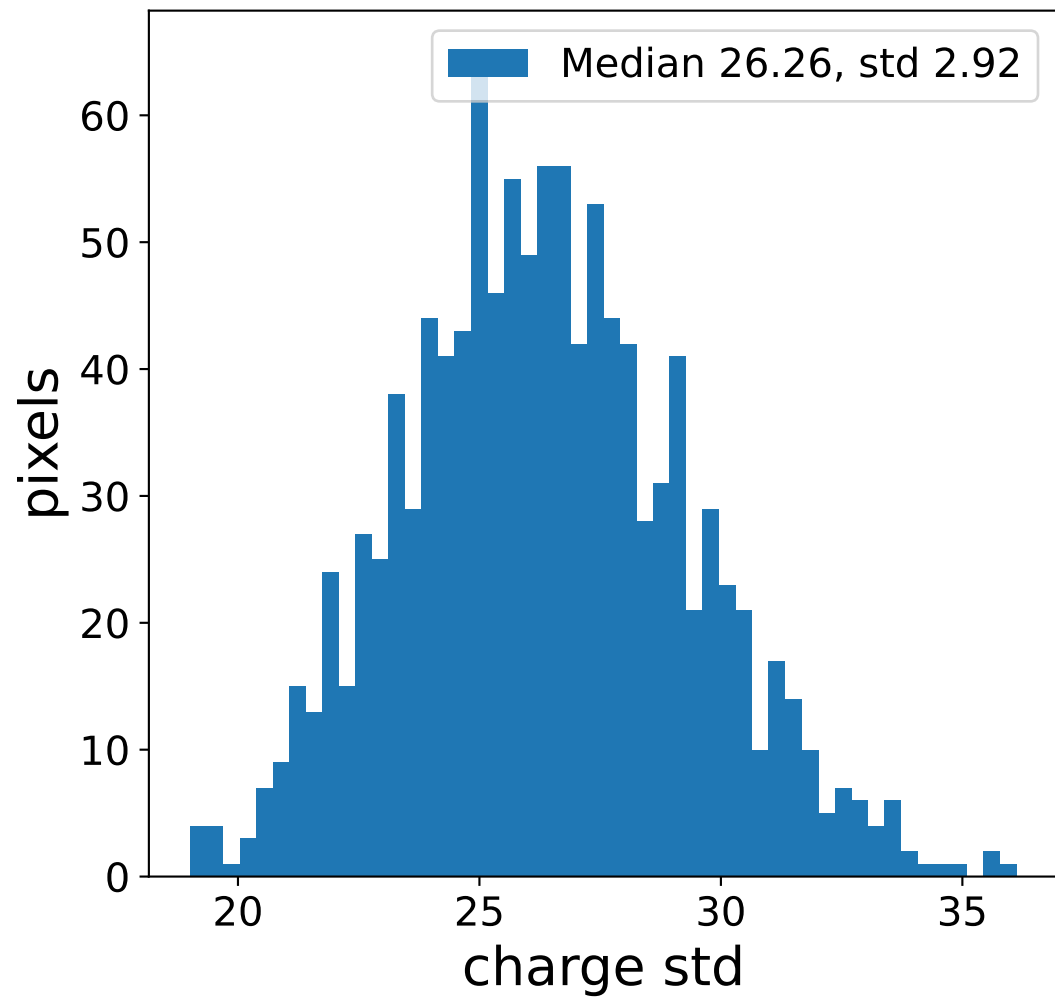
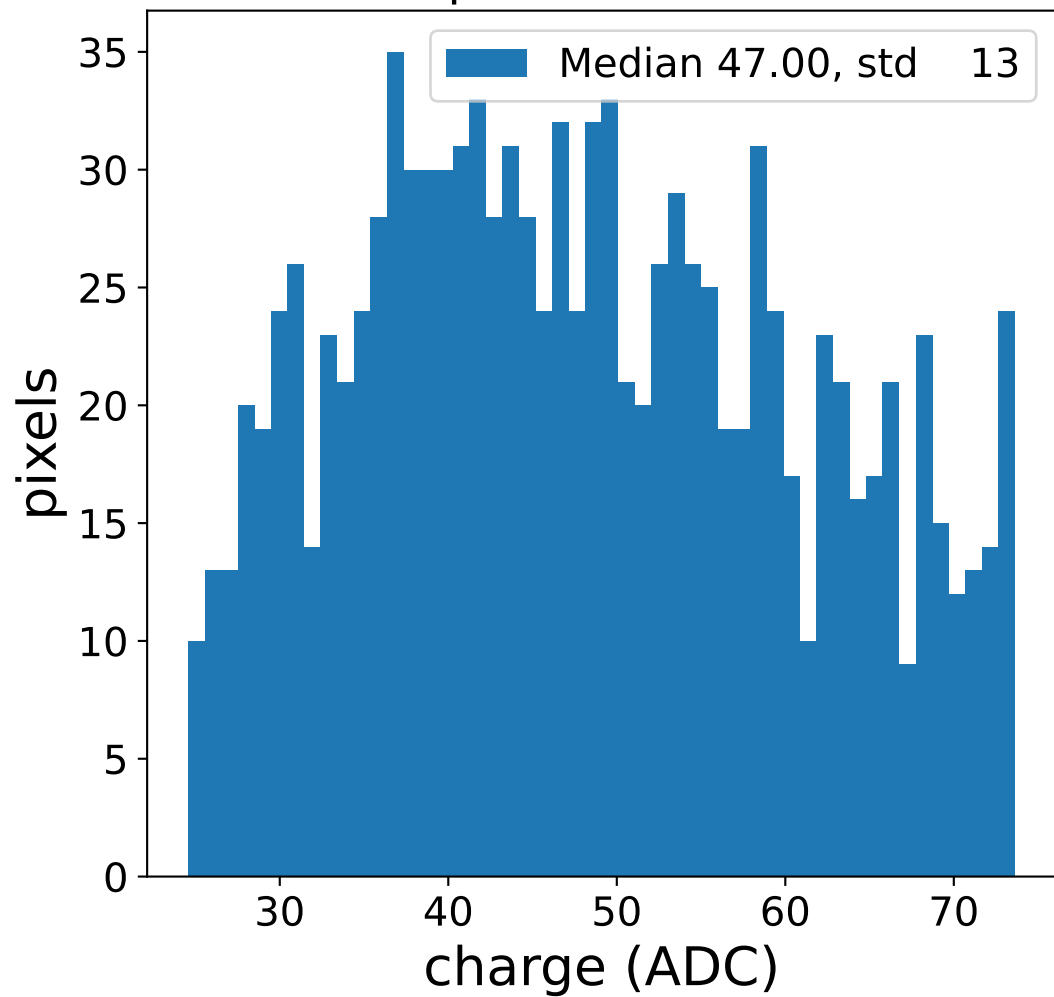


### flat-fielded gain [ADC/pe]

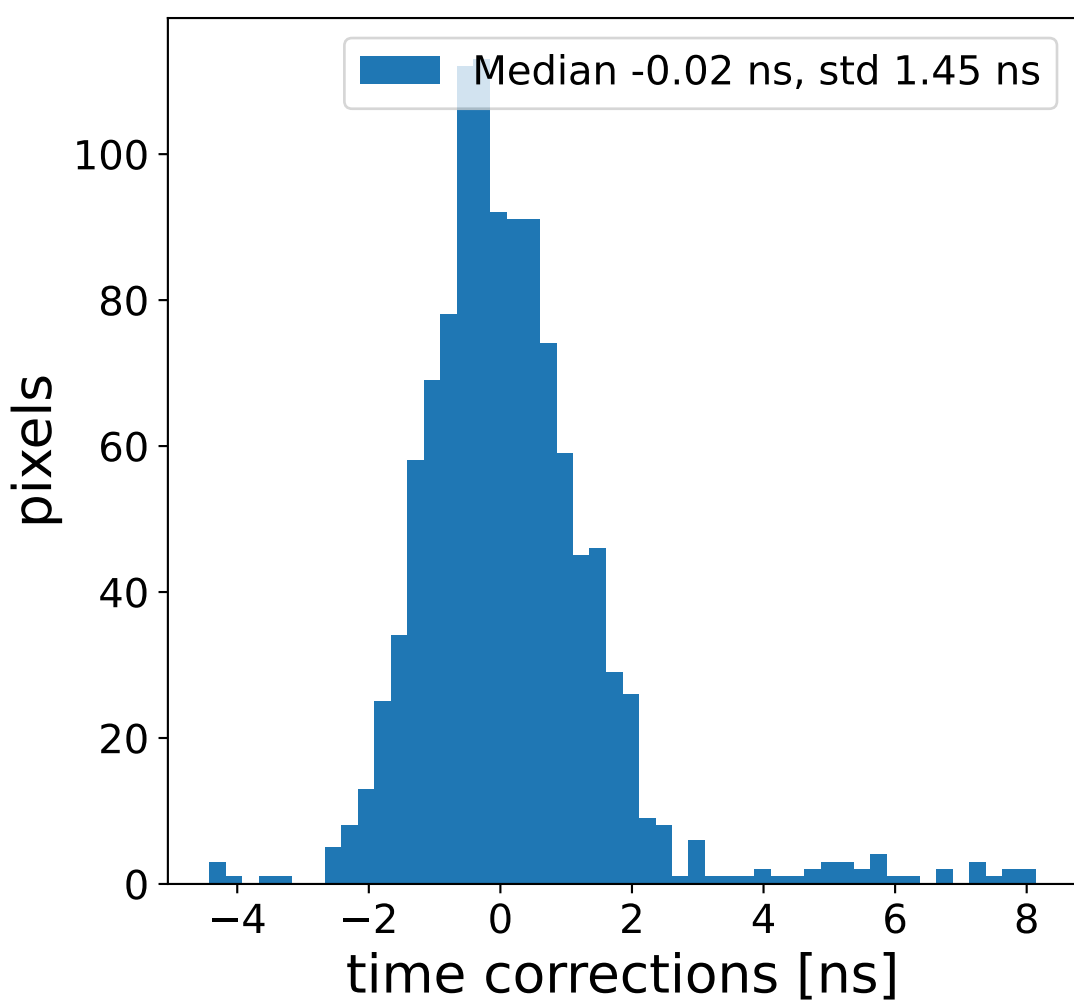
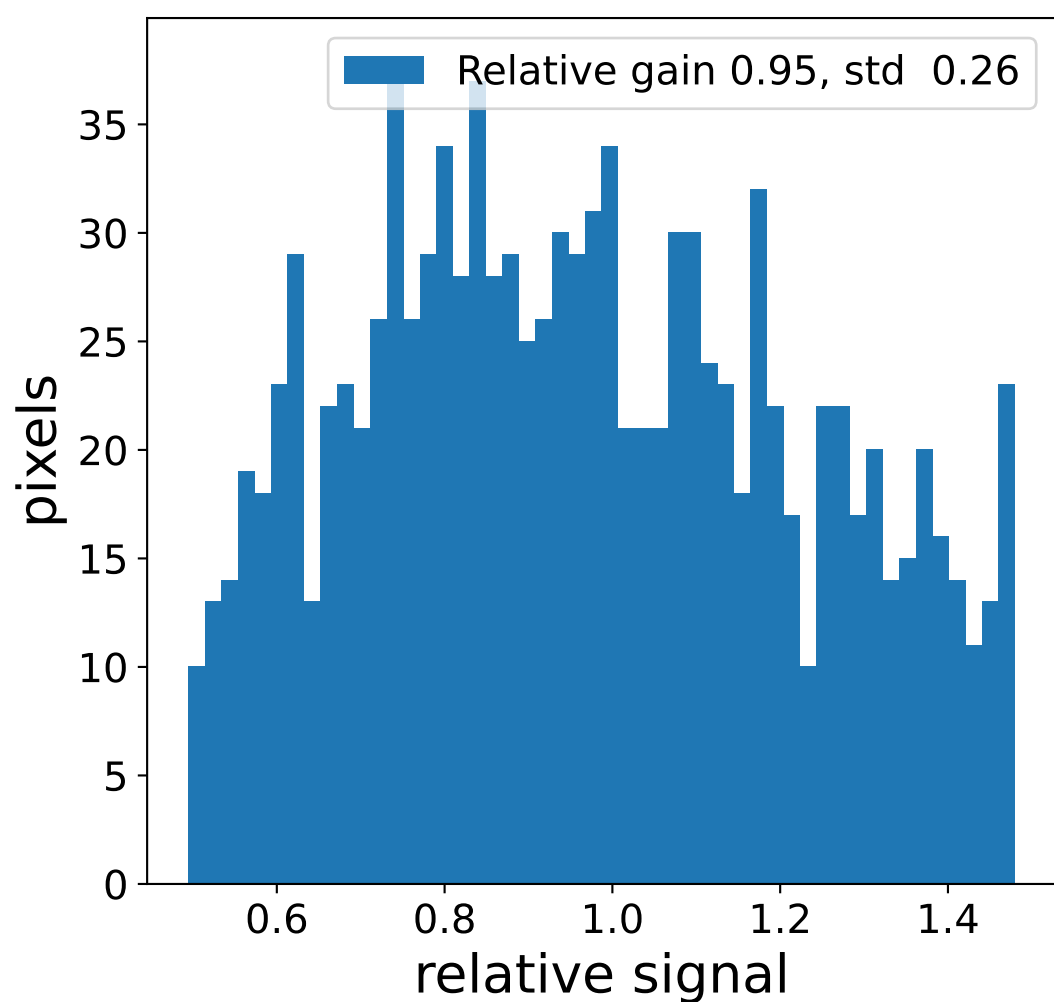
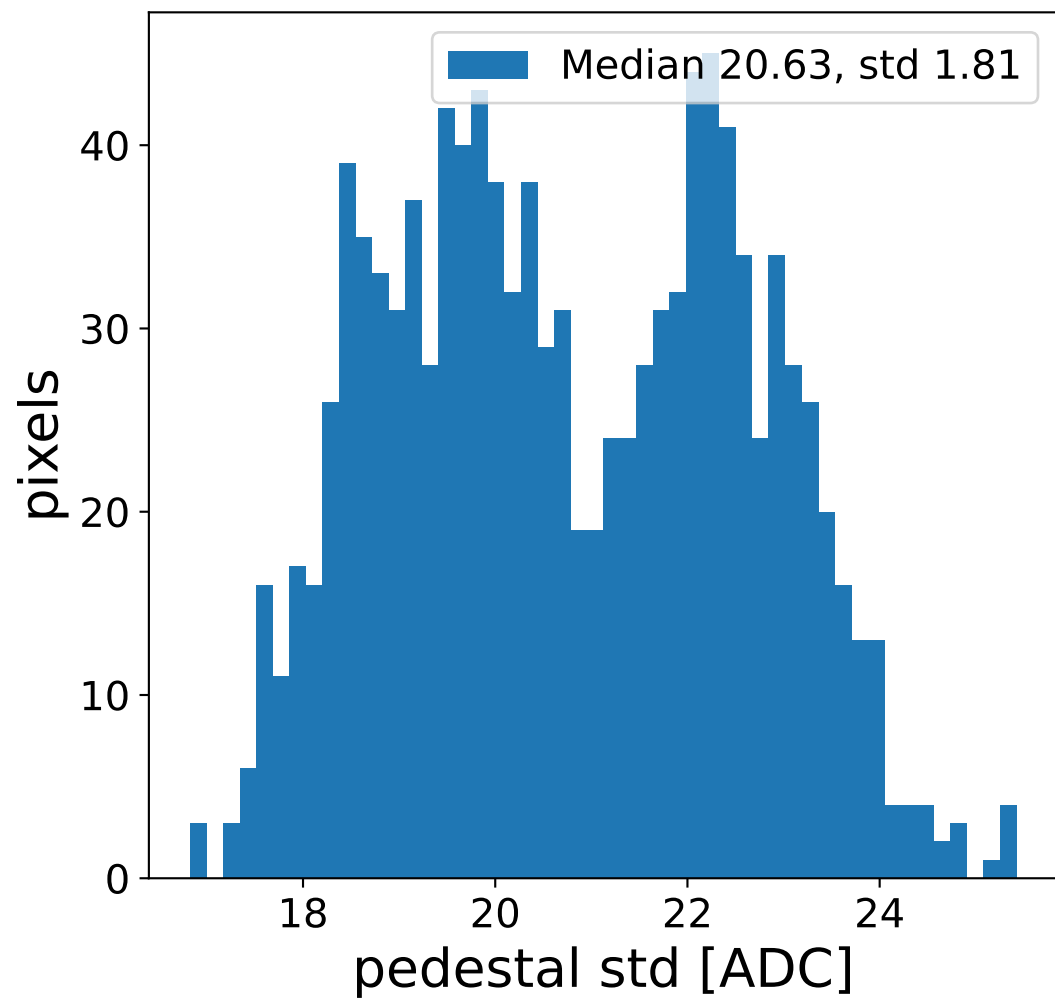
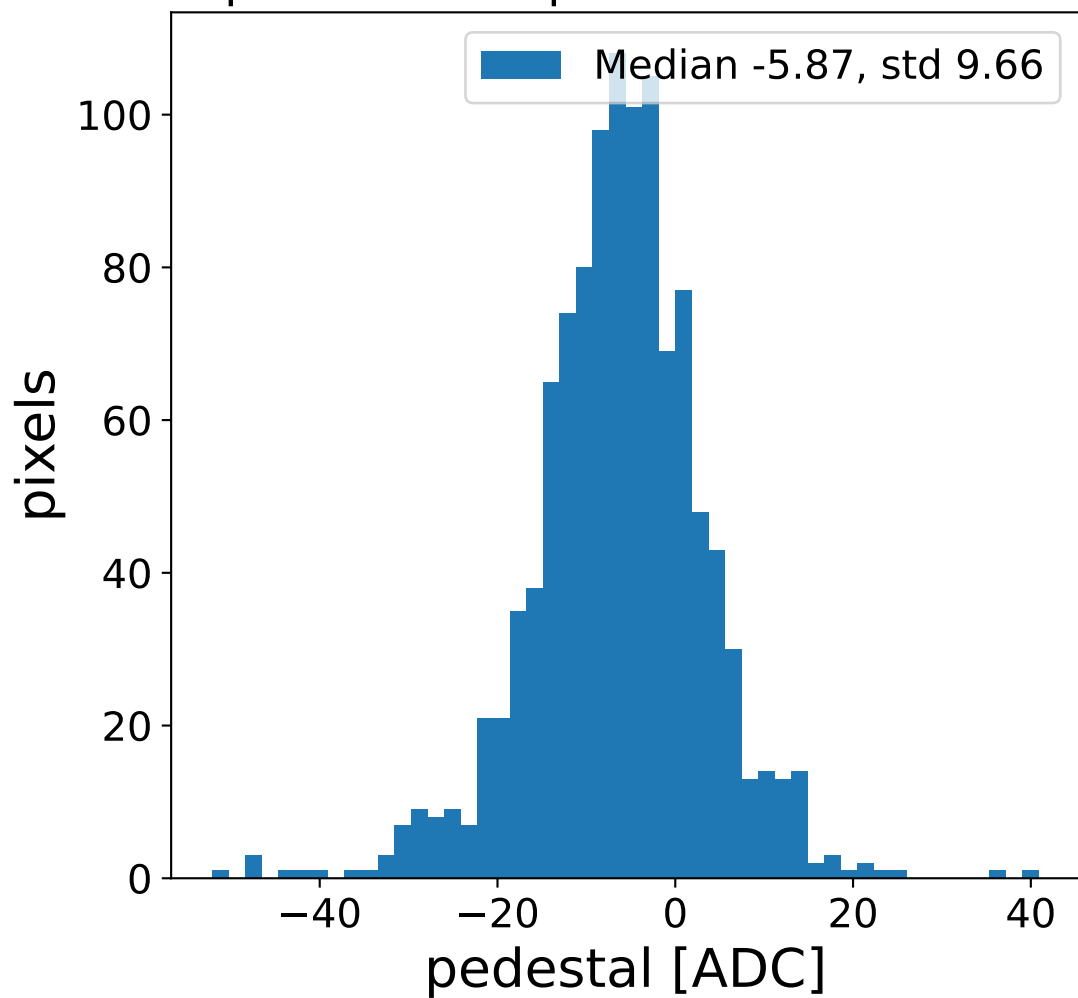


# Run 24185 channel: LG

## FF sample of 10000 events



## pedestal sample of 10000 events



## flat-fielded gain [ADC/pe]

