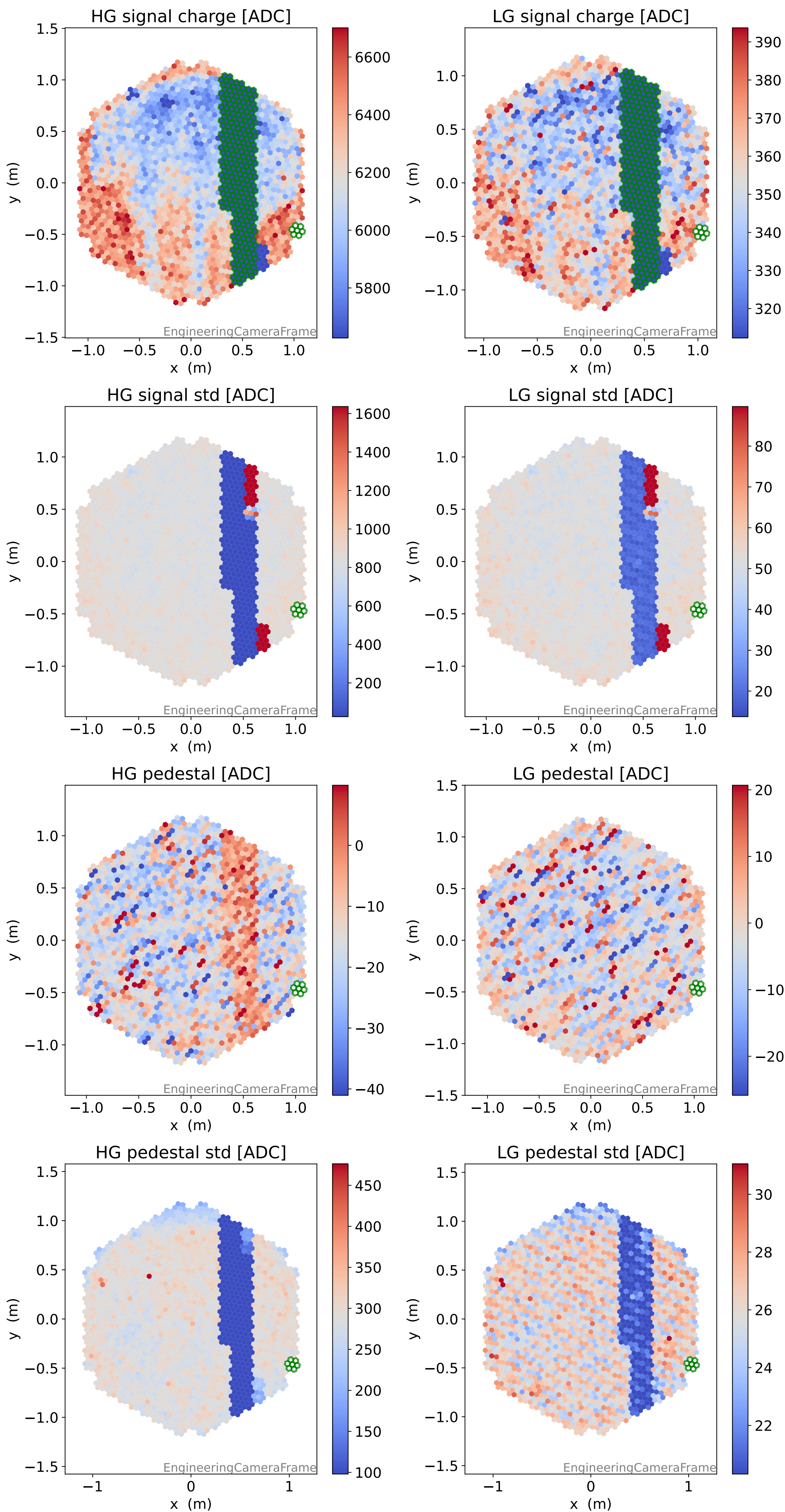
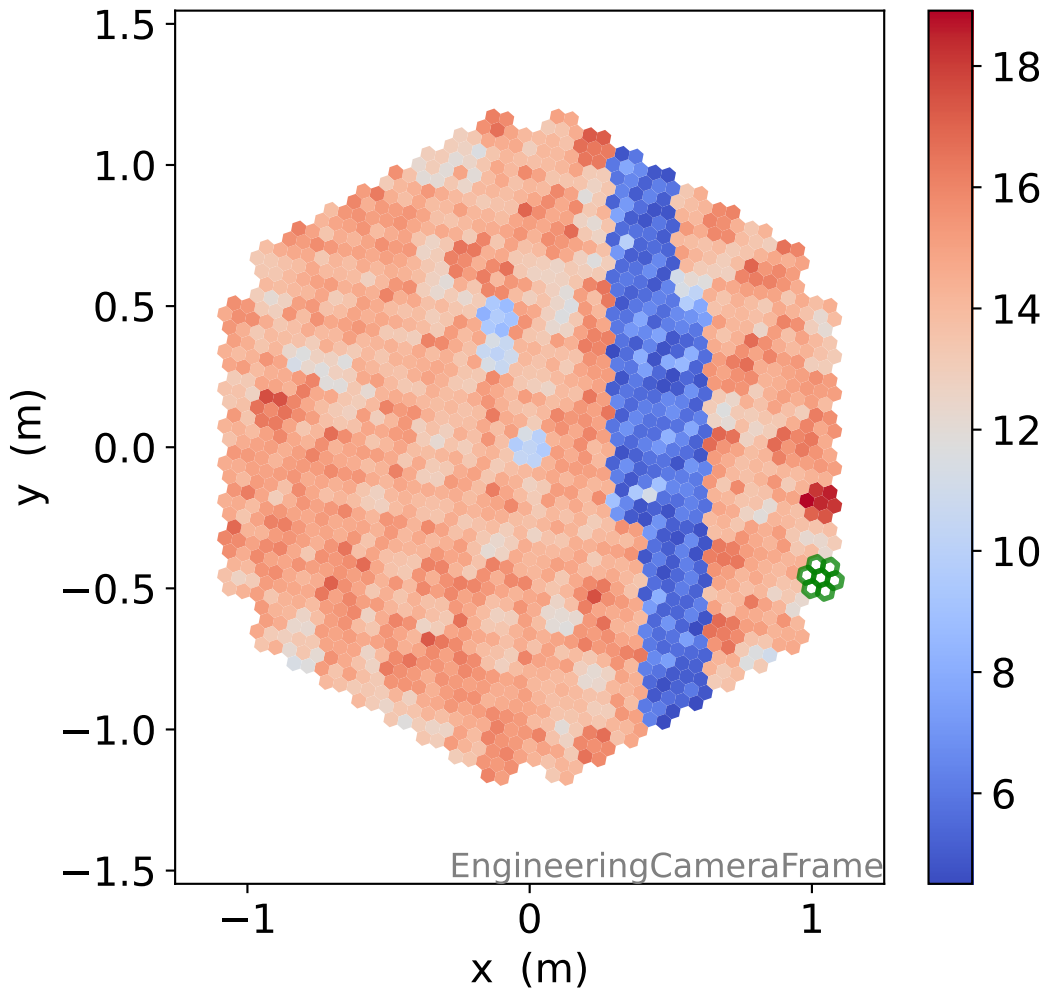


# Run 23000, Cat-A calibration

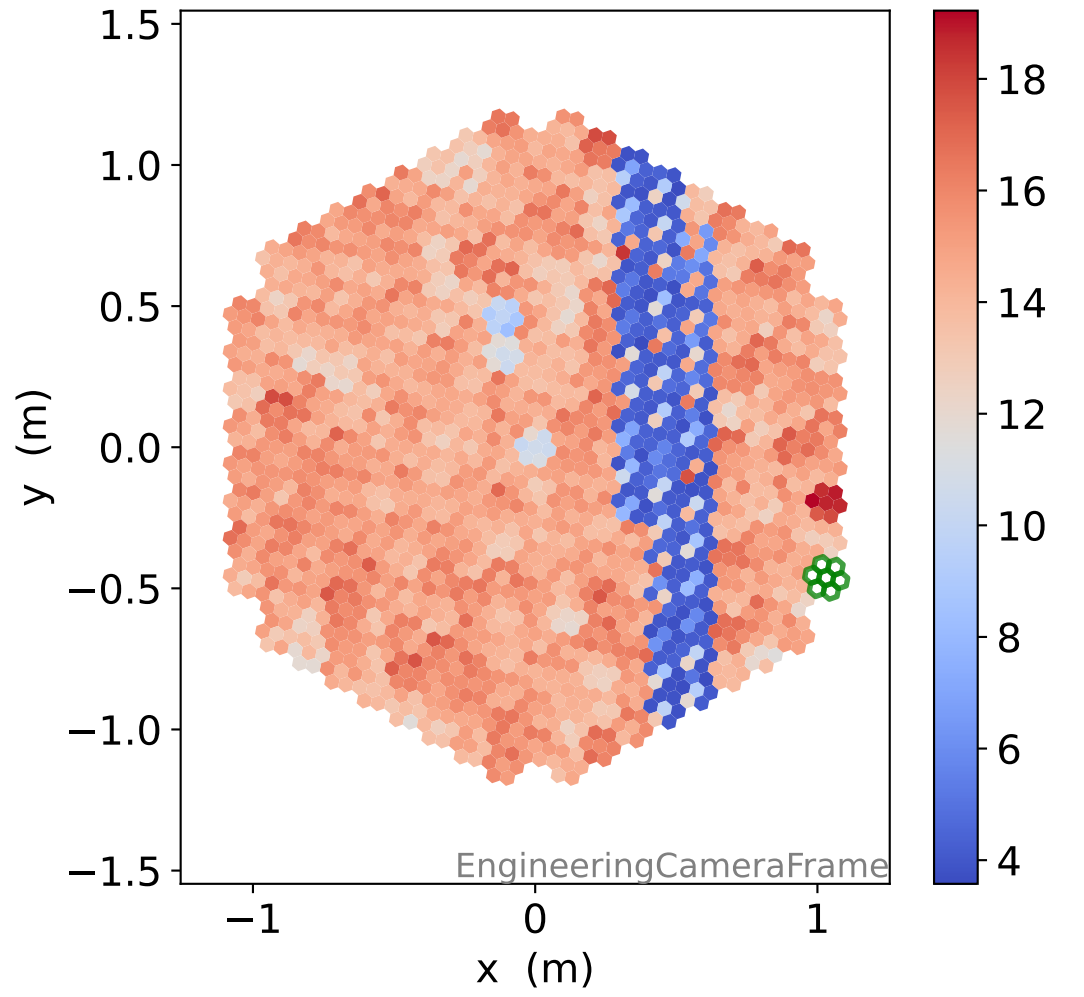


# Run 23000

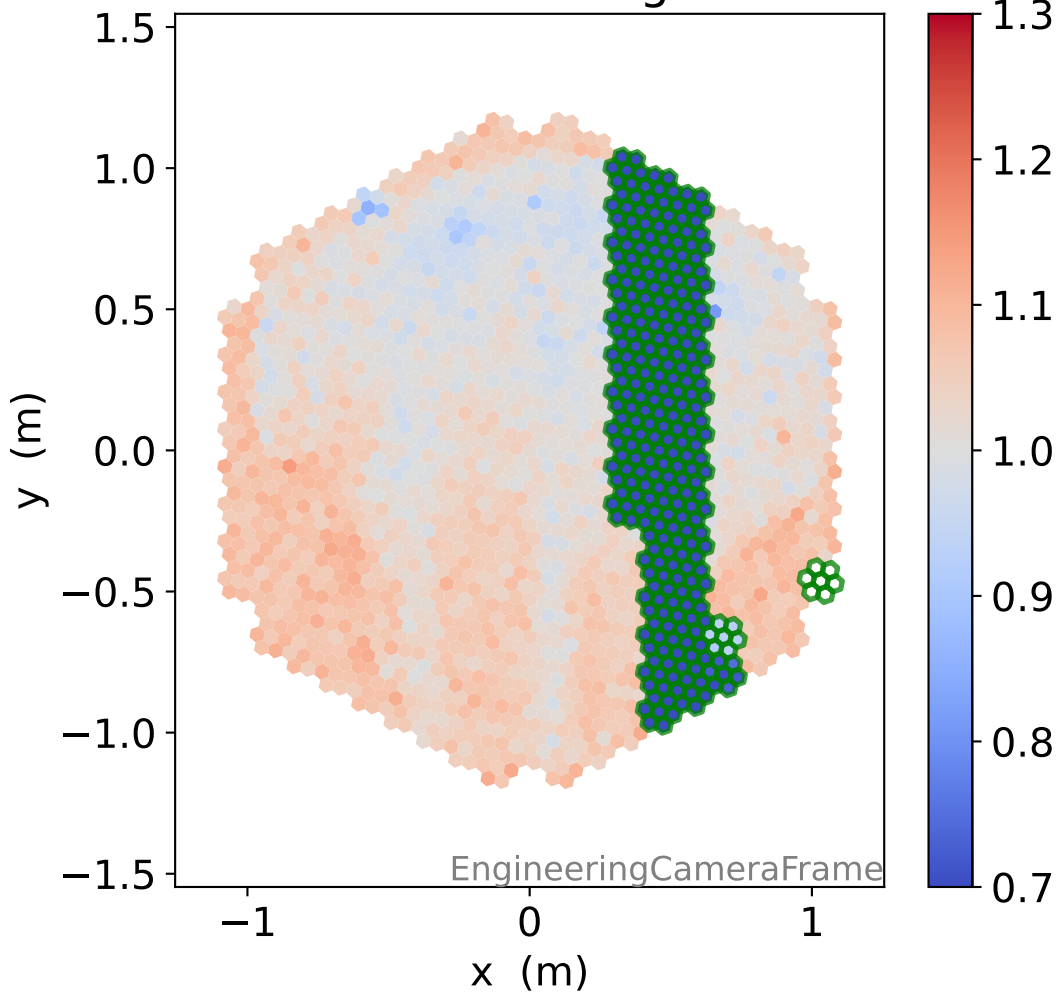
### HG time



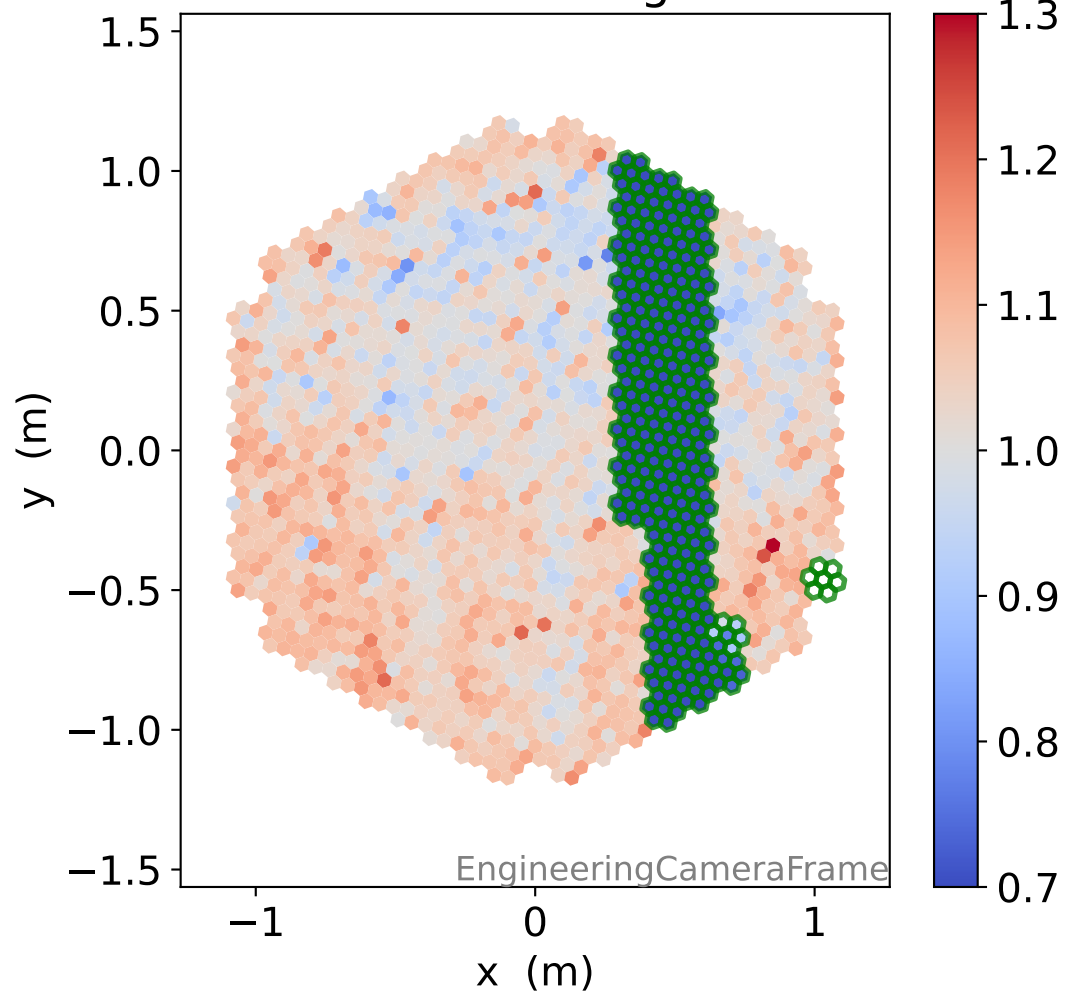
### LG time



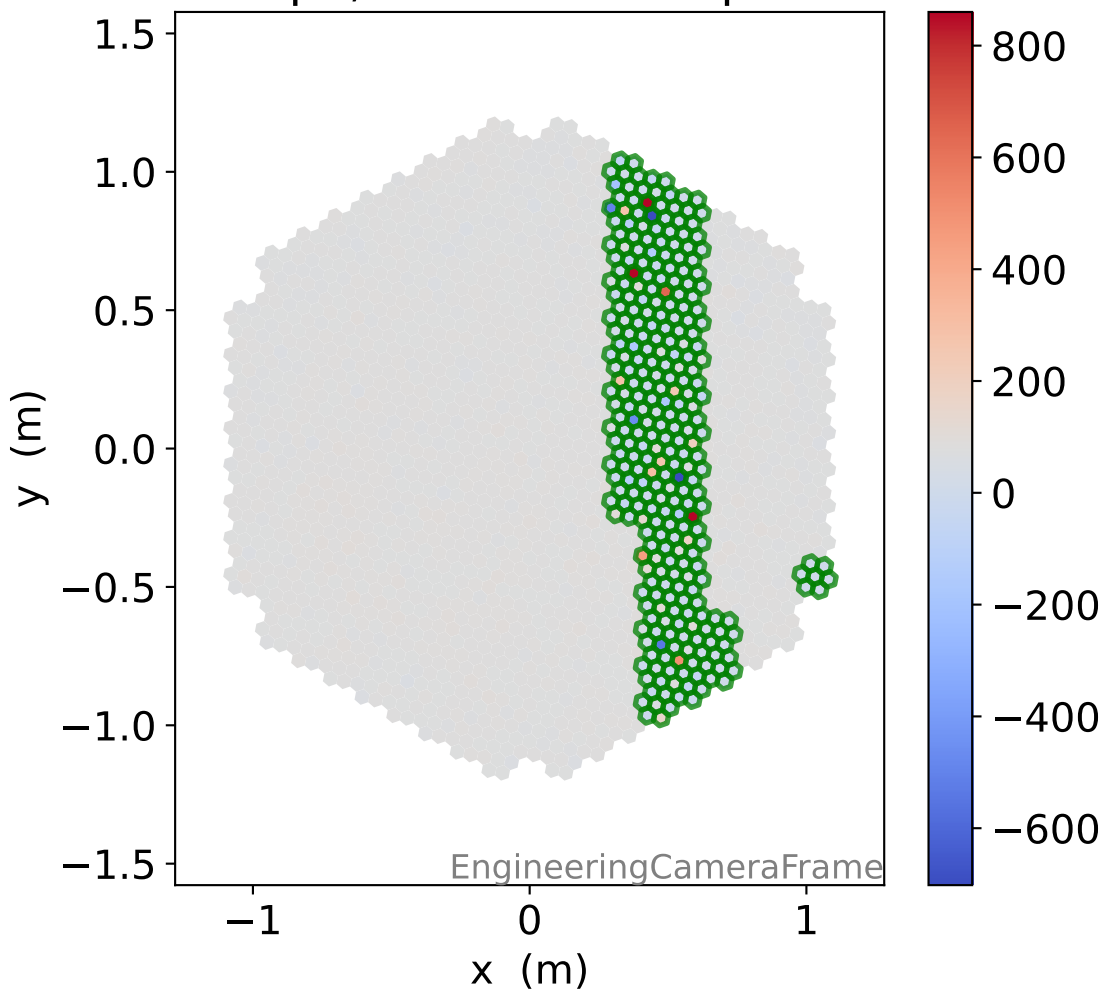
### HG relative signal



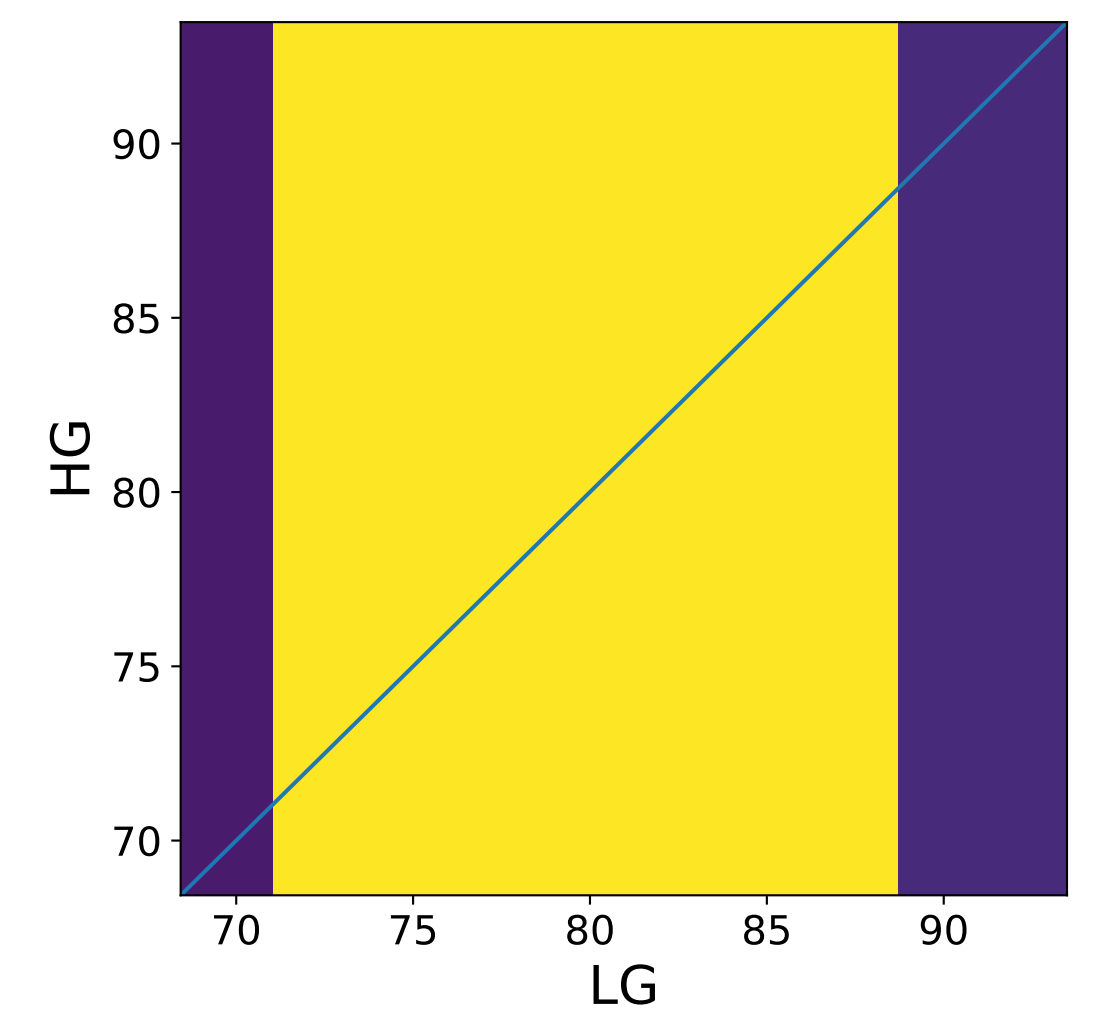
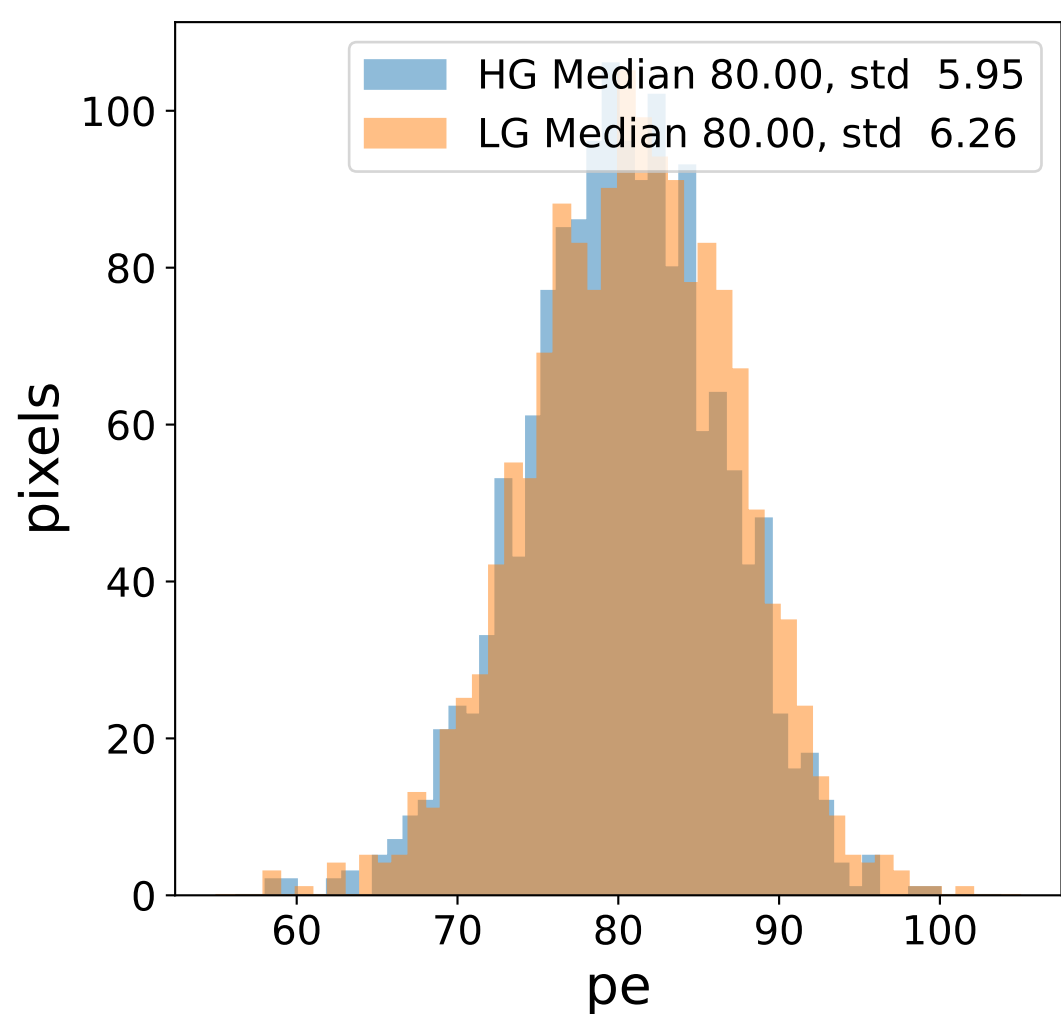
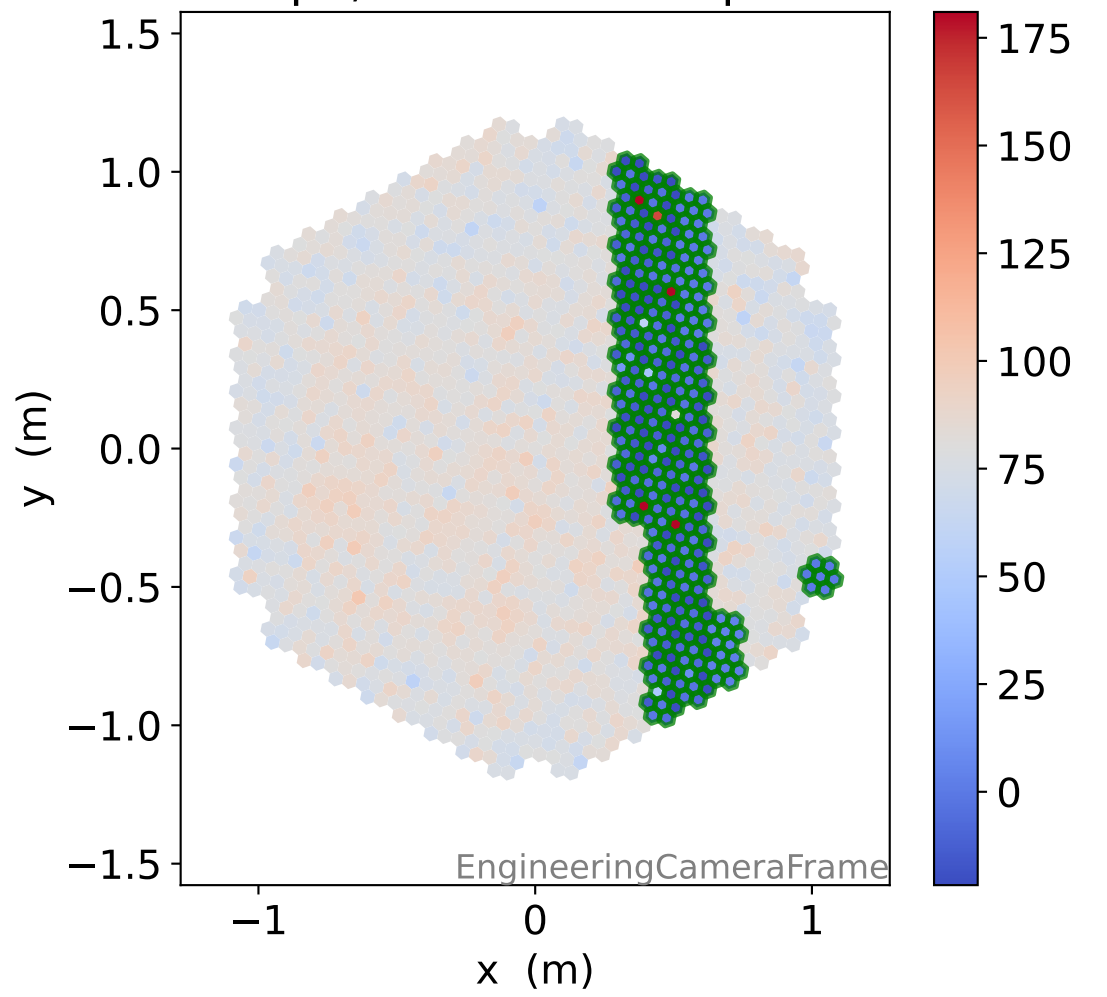
### LG relative signal



### HG pe, 294 unusable pixels

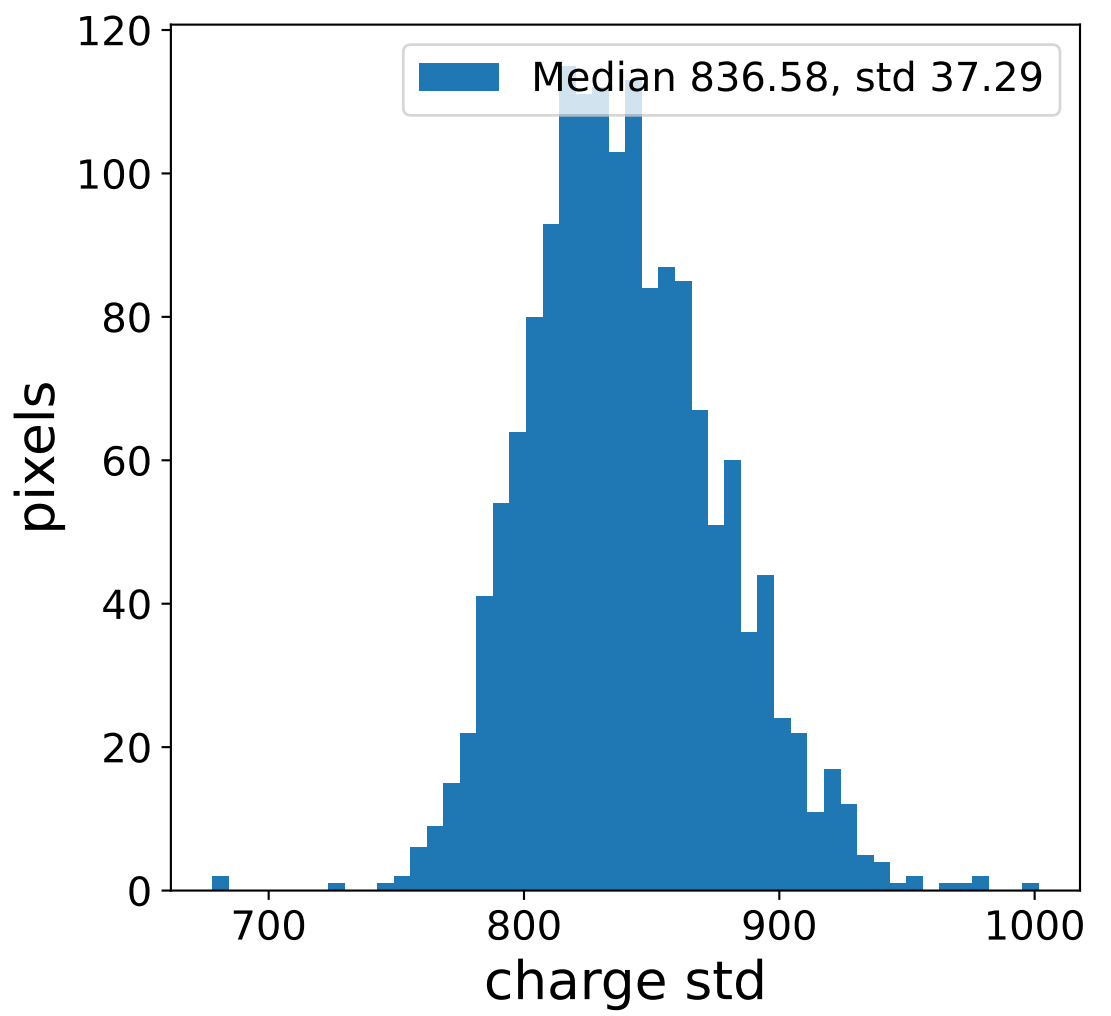
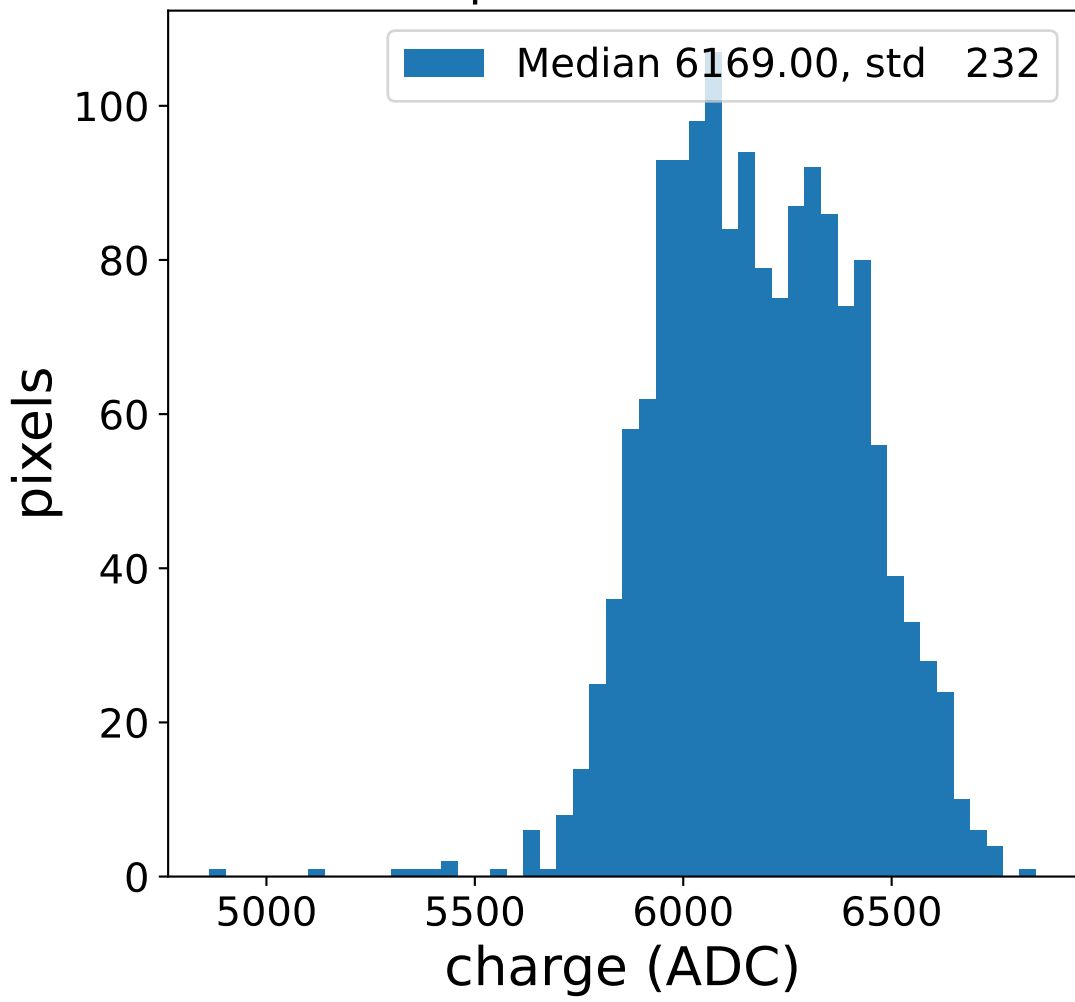


### LG pe, 294 unusable pixels

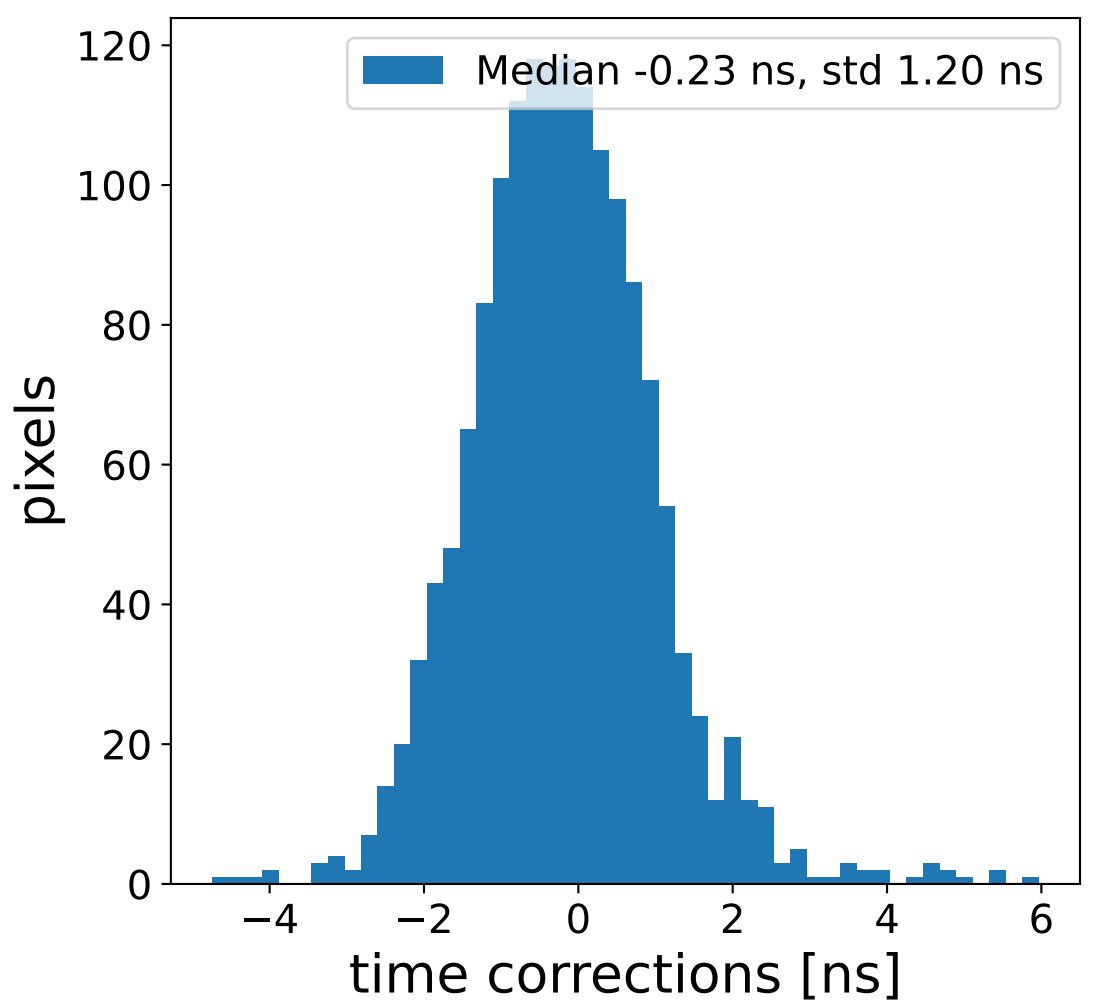
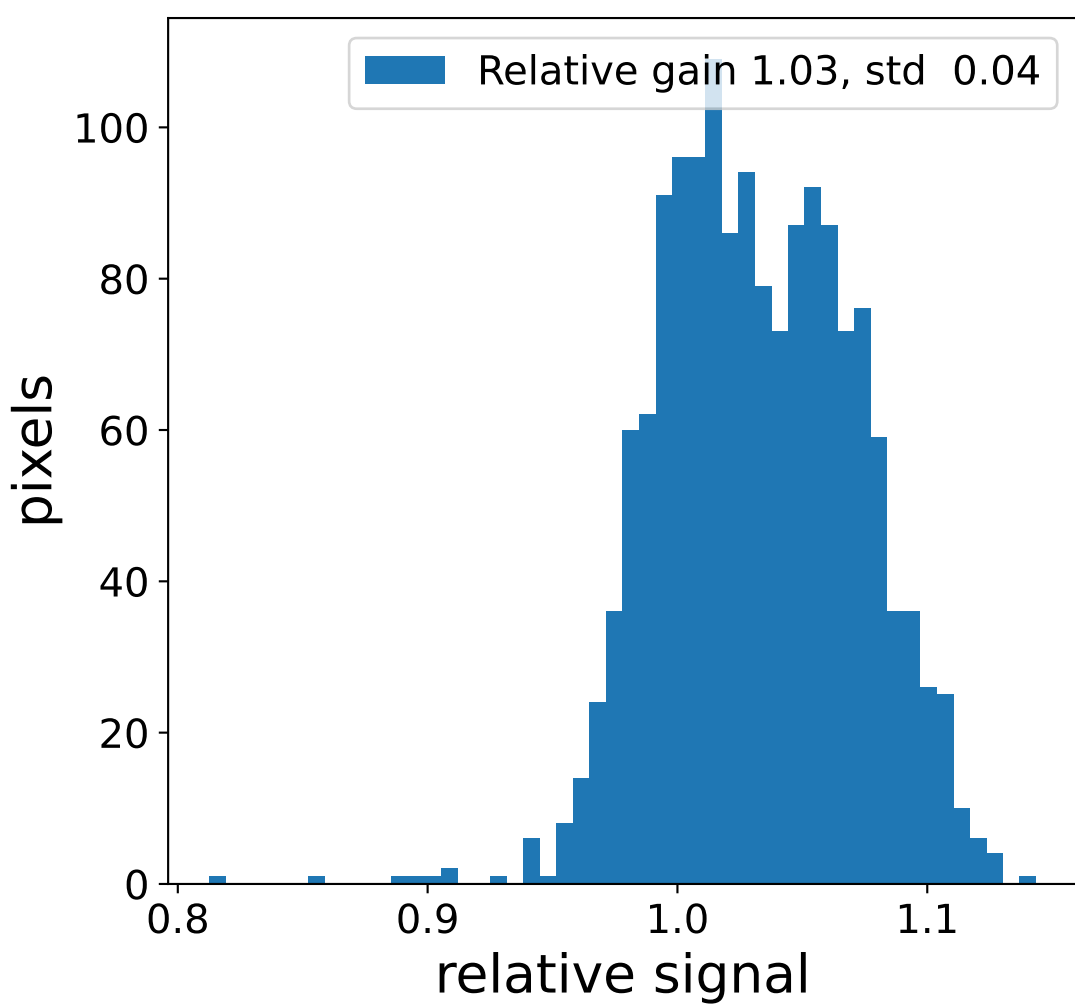
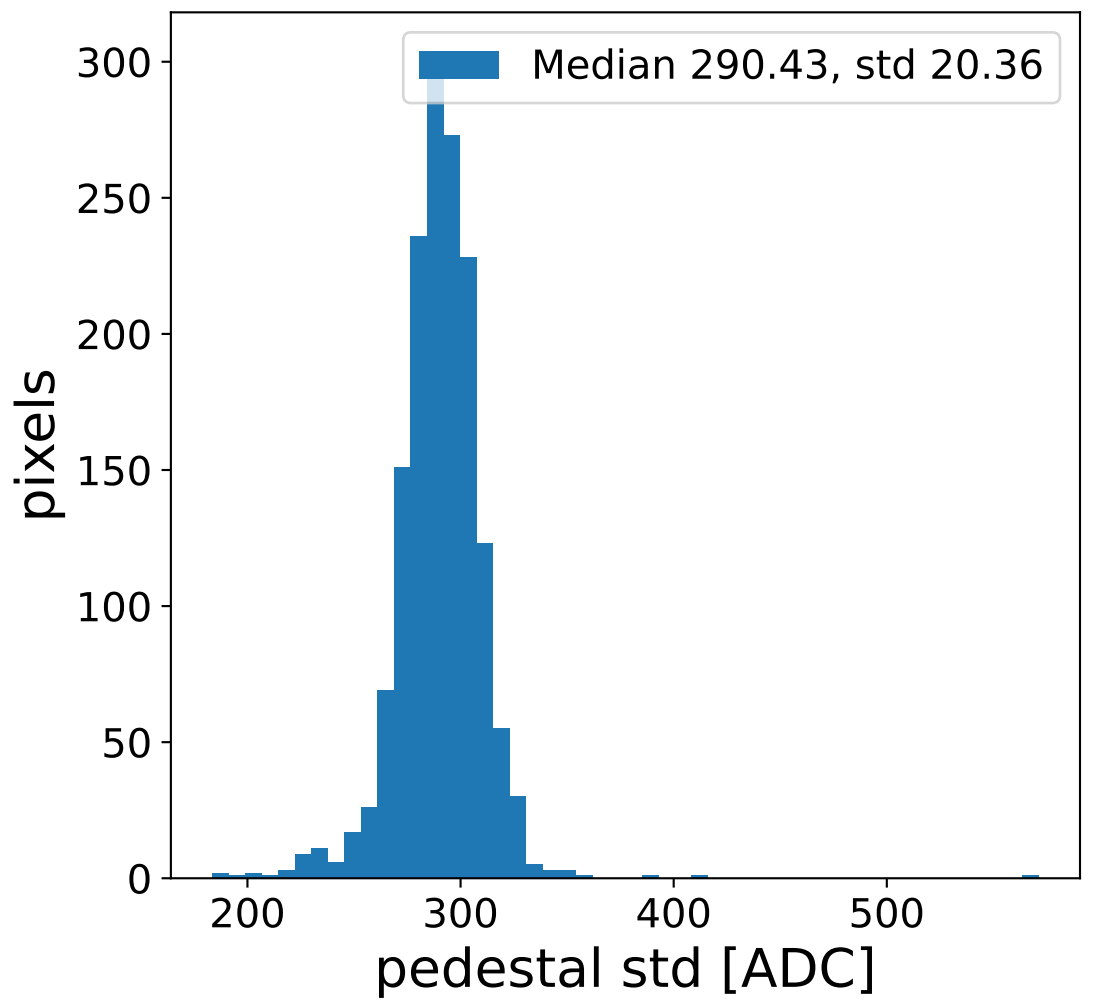
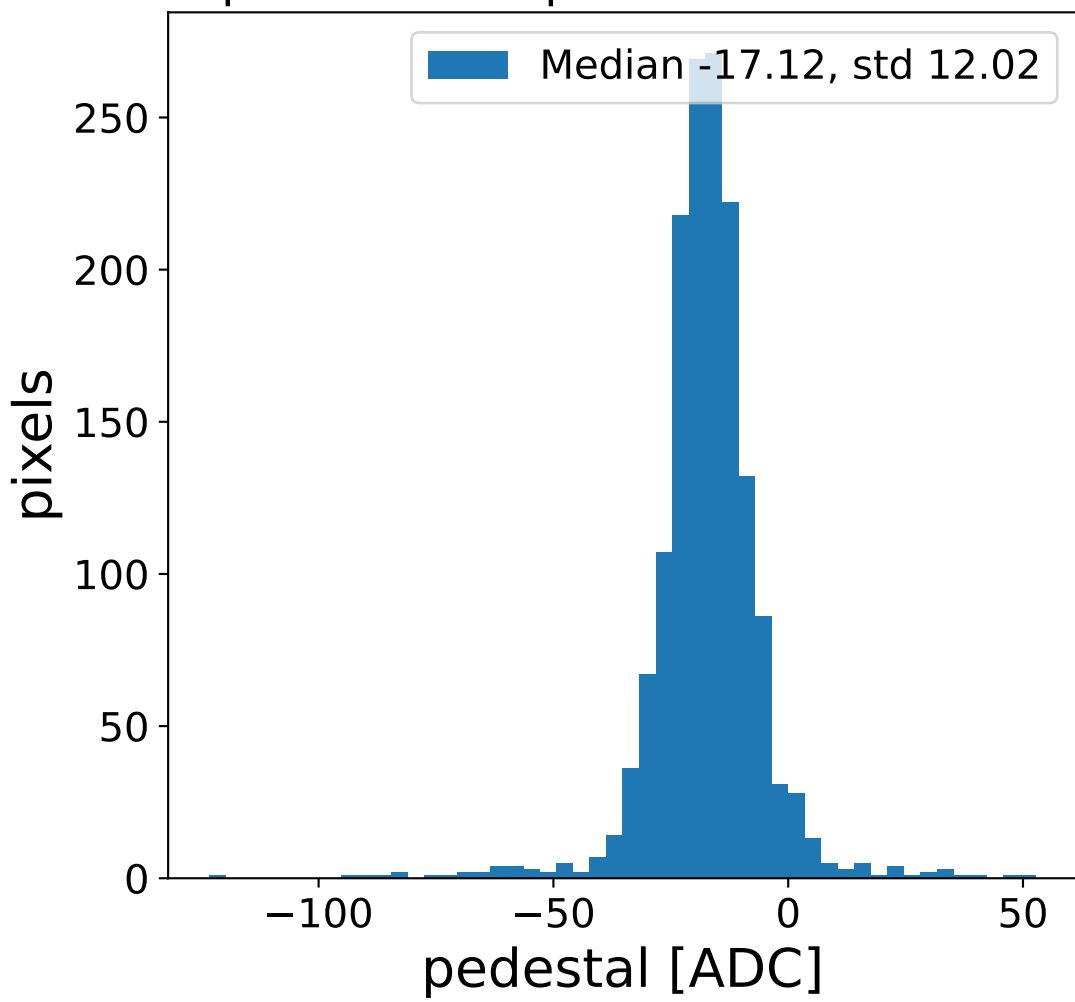


# Run 23000 channel: HG

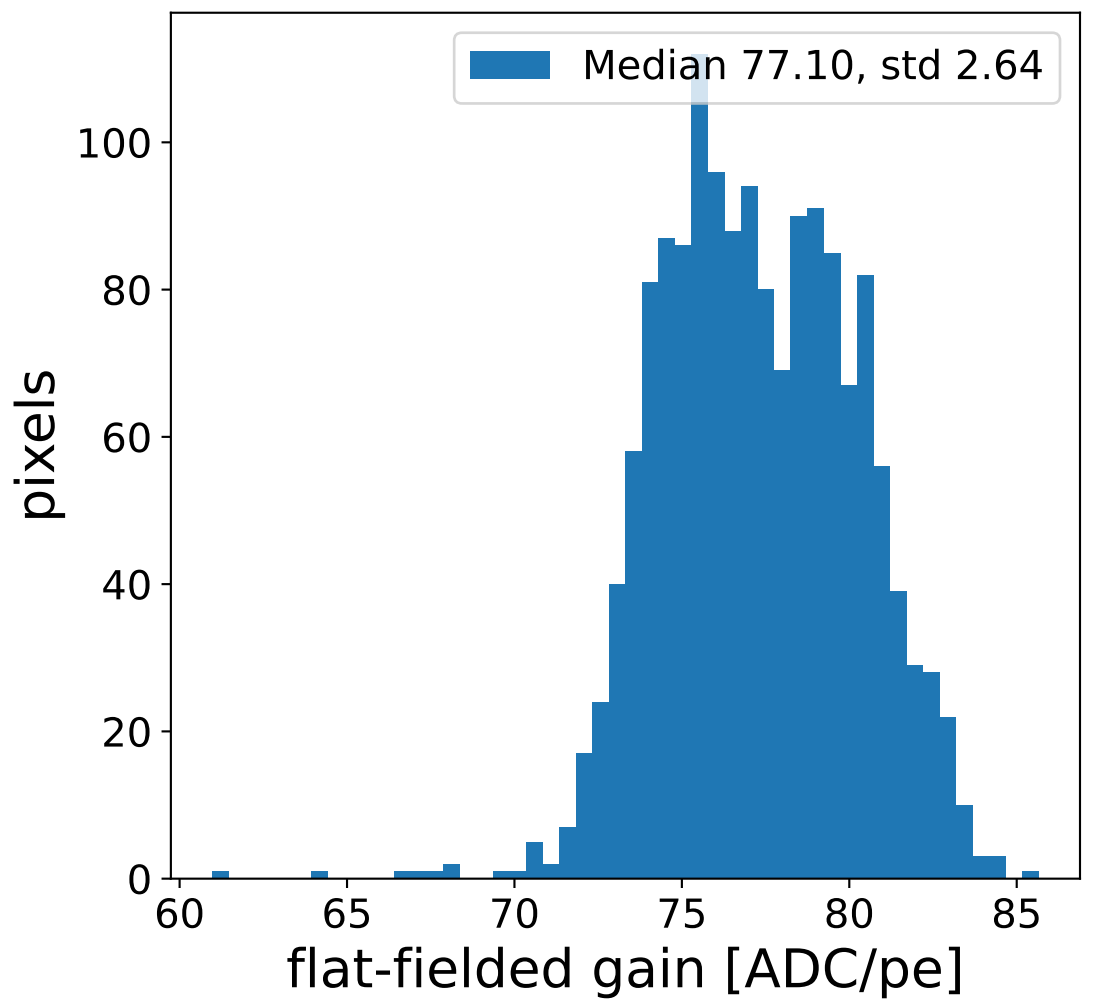
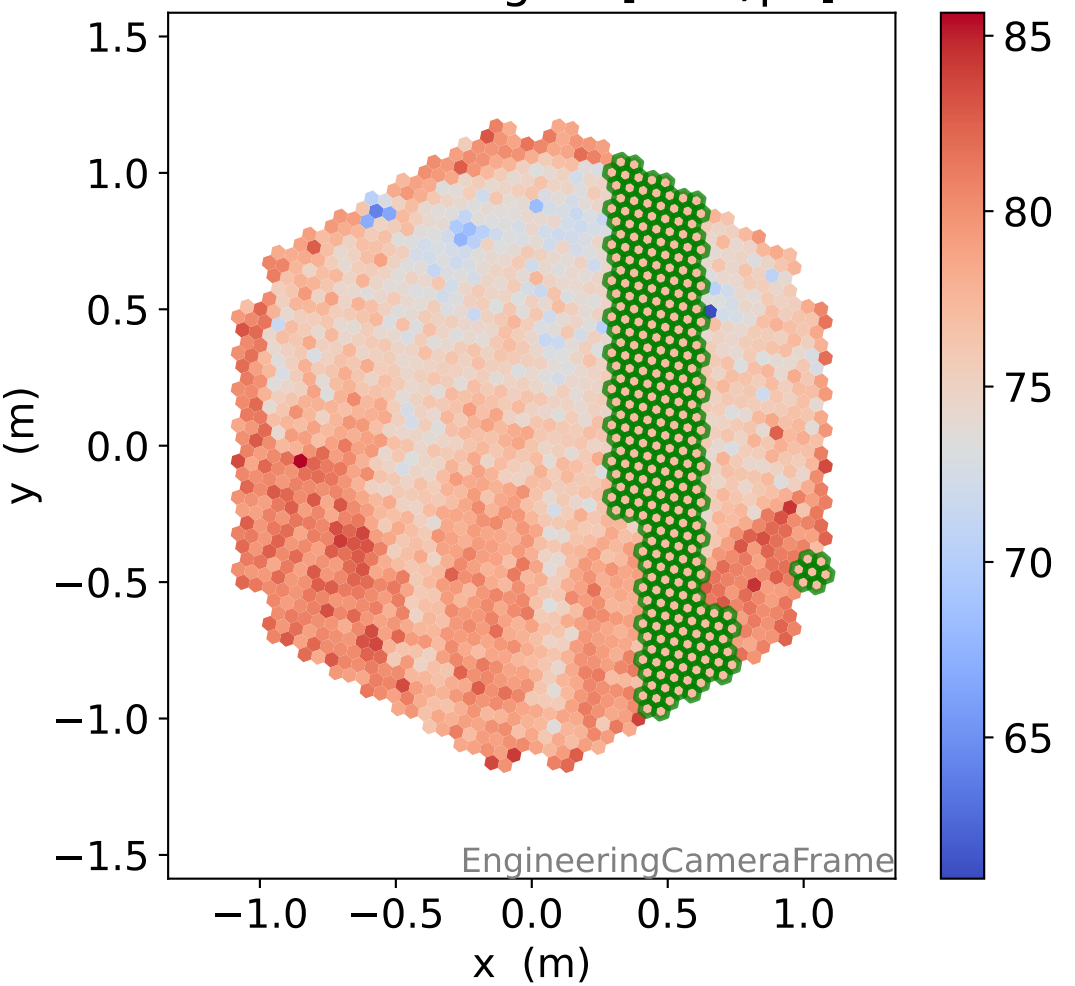
## FF sample of 10000 events



## pedestal sample of 10000 events

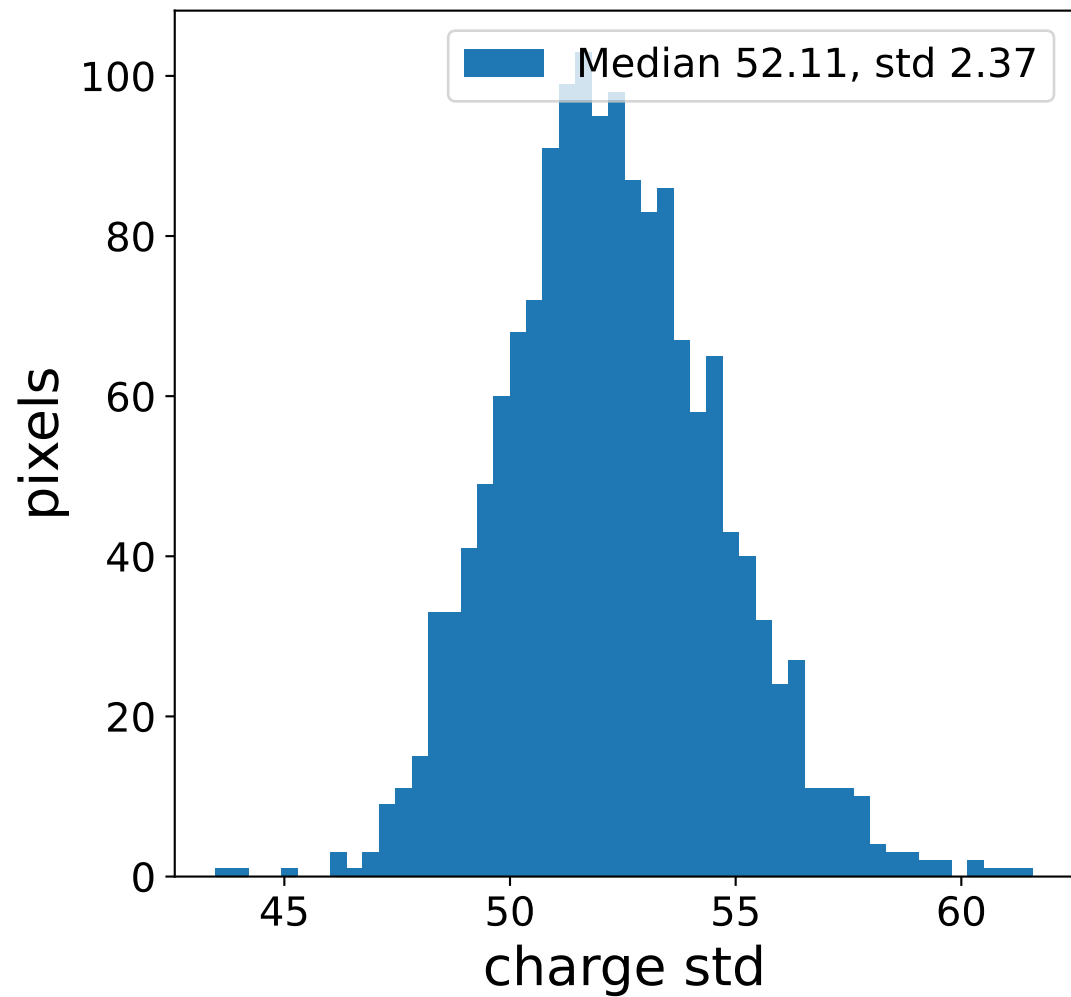
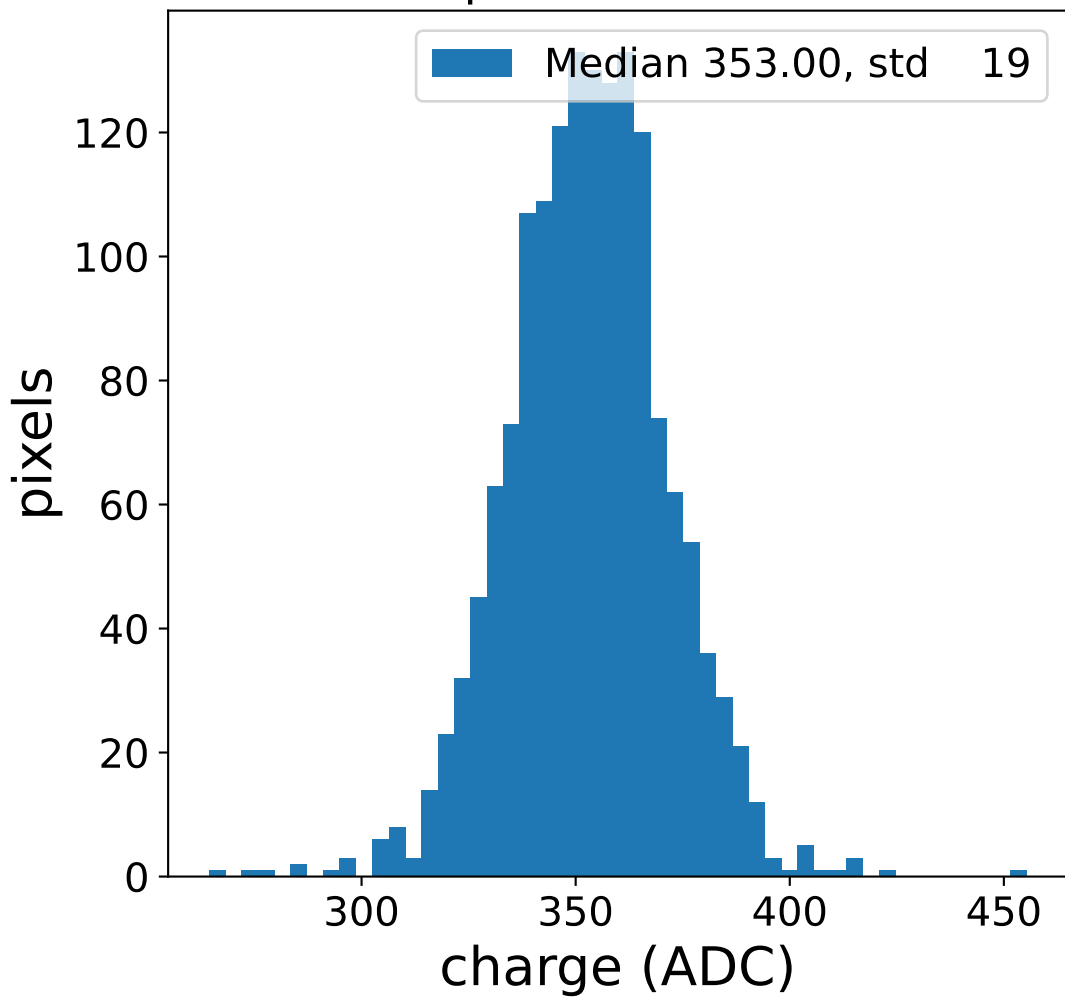


## flat-fielded gain [ADC/pe]

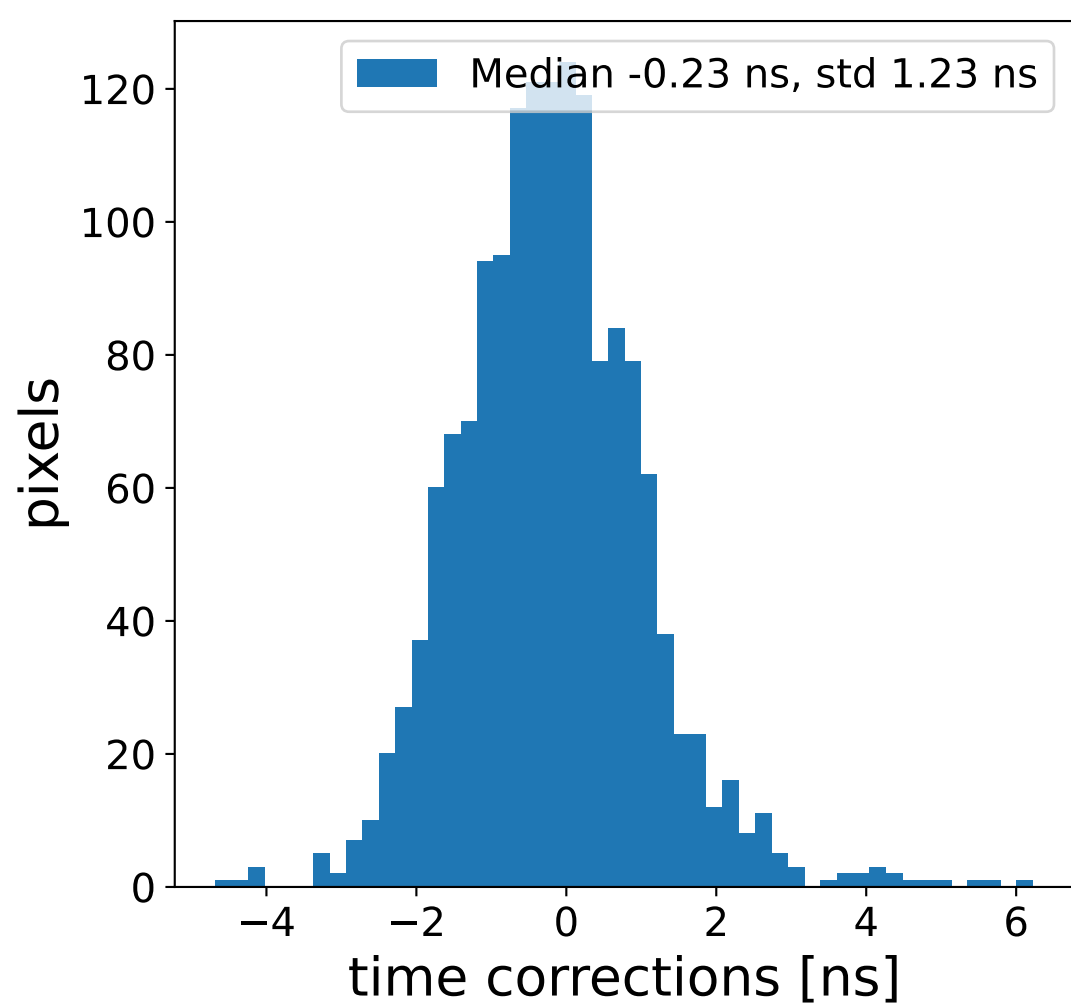
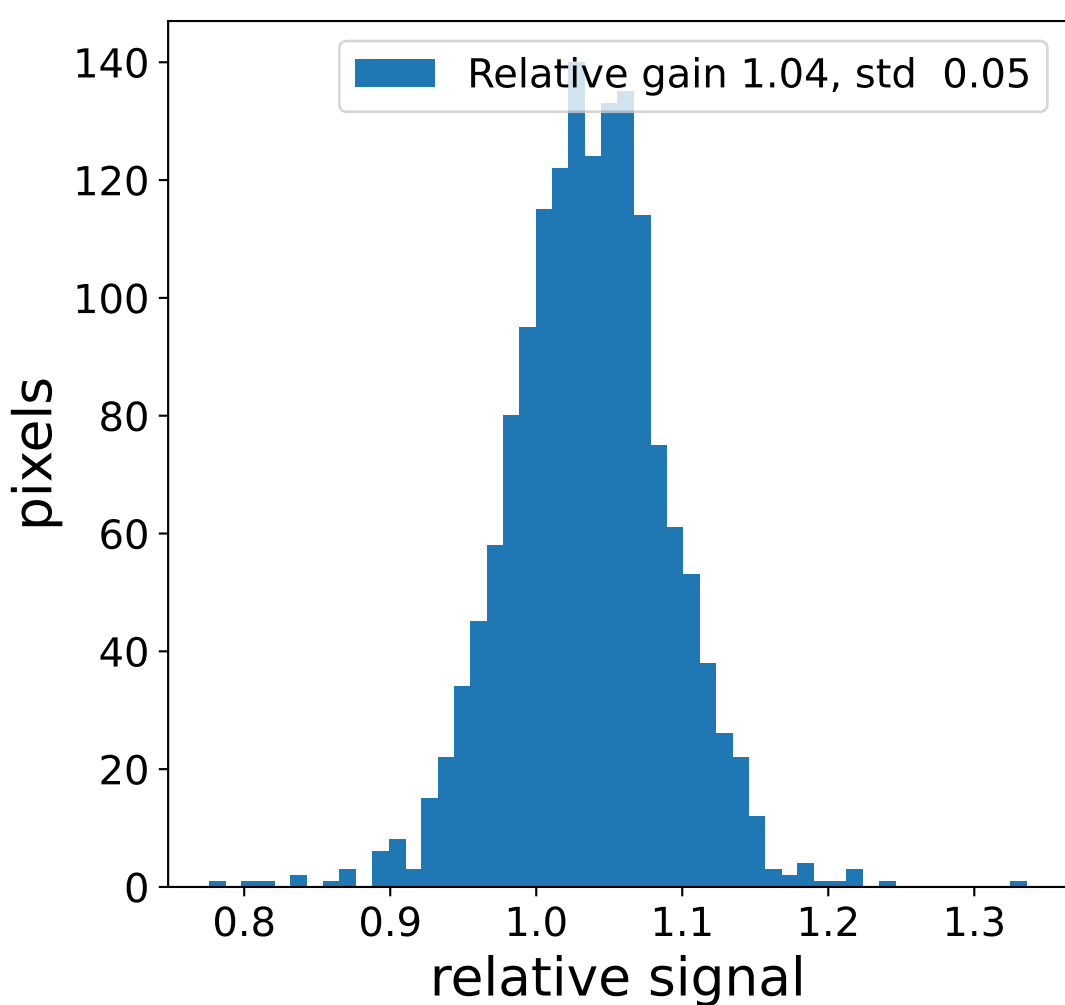
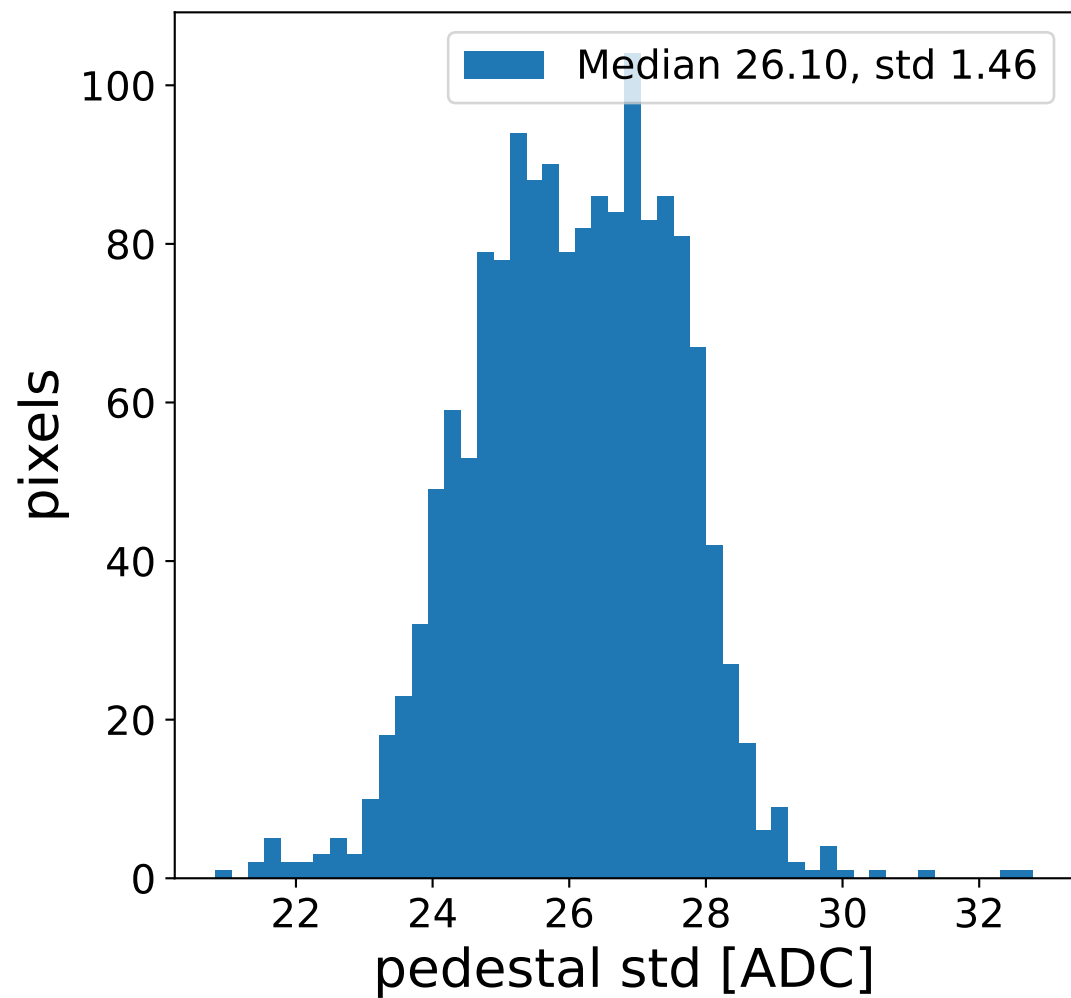
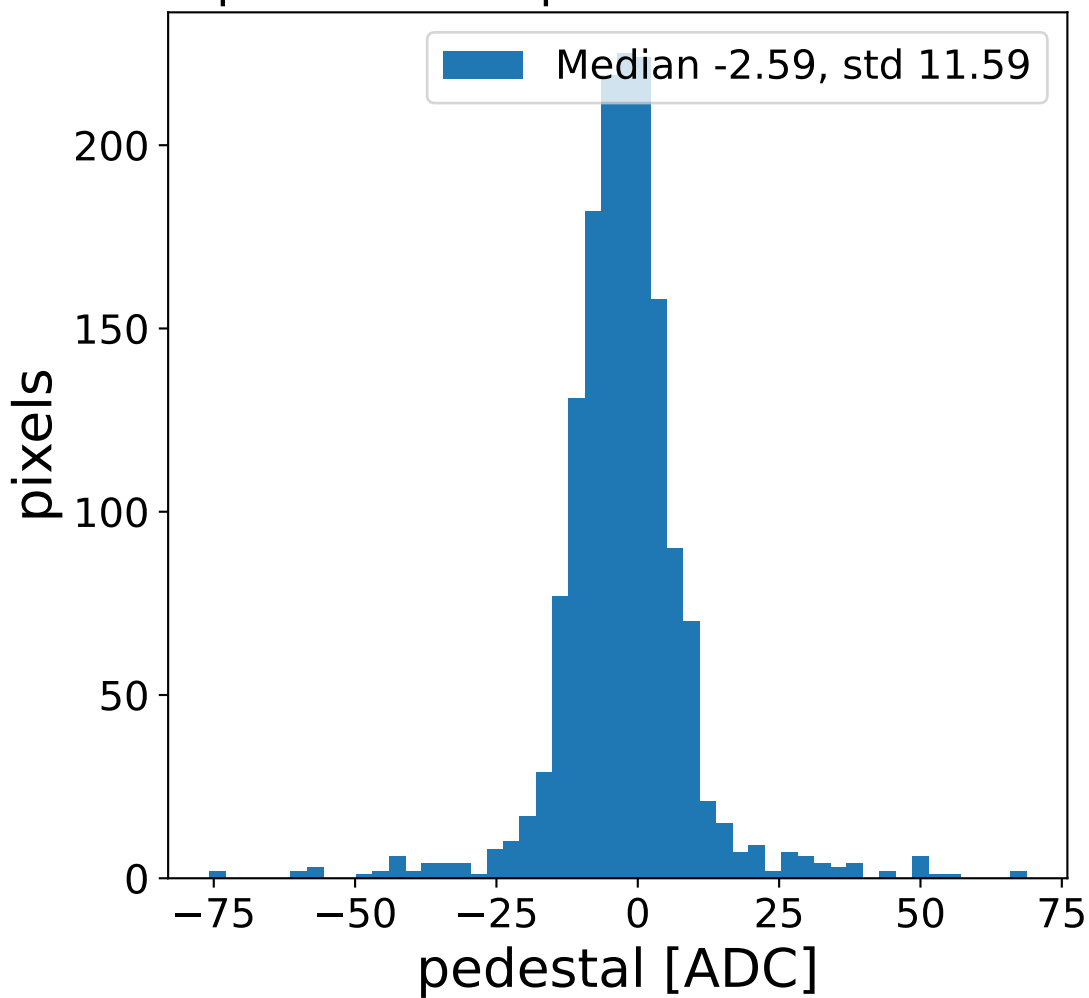


# Run 23000 channel: LG

## FF sample of 10000 events



## pedestal sample of 10000 events



## flat-fielded gain [ADC/pe]

