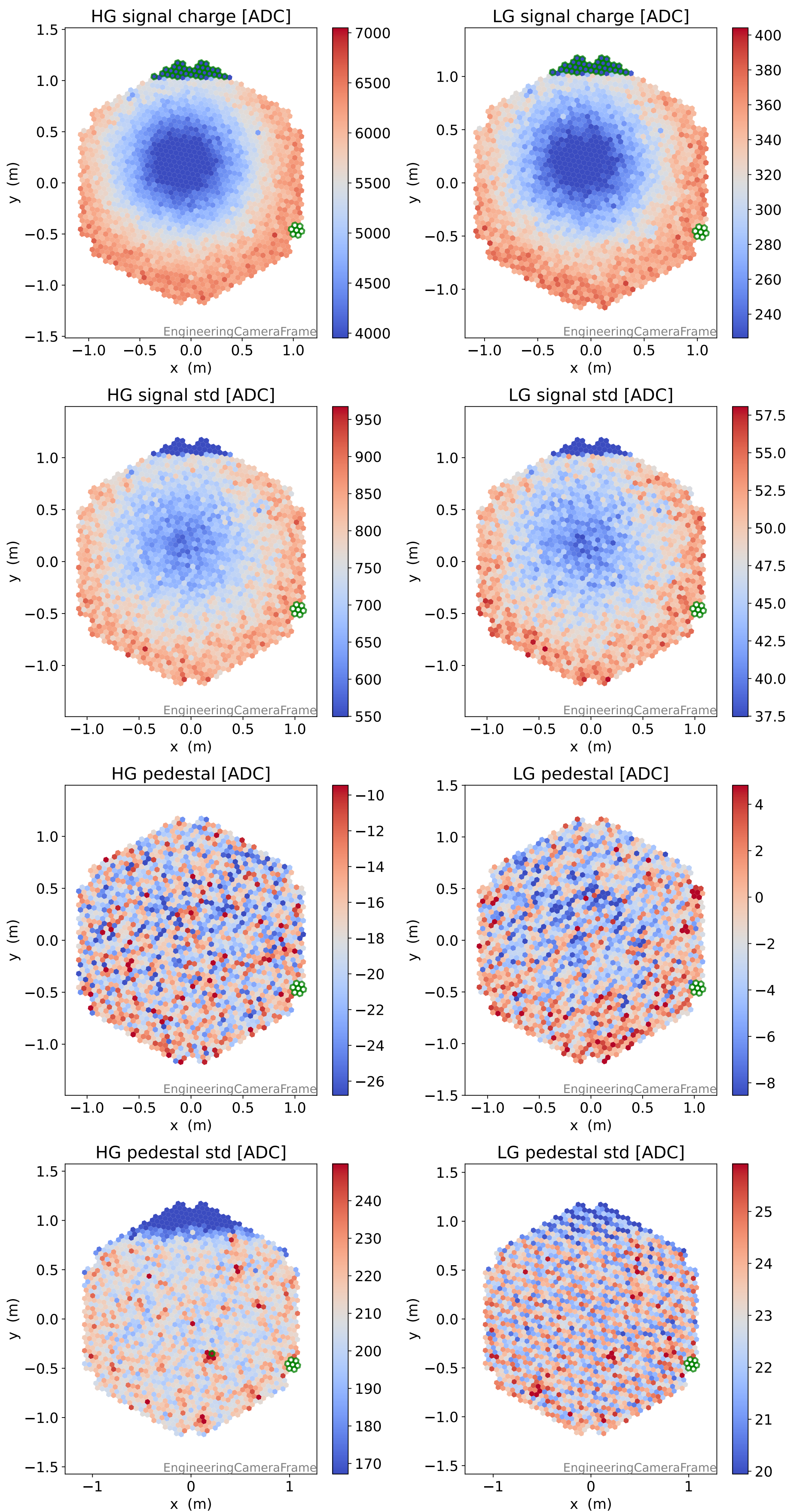
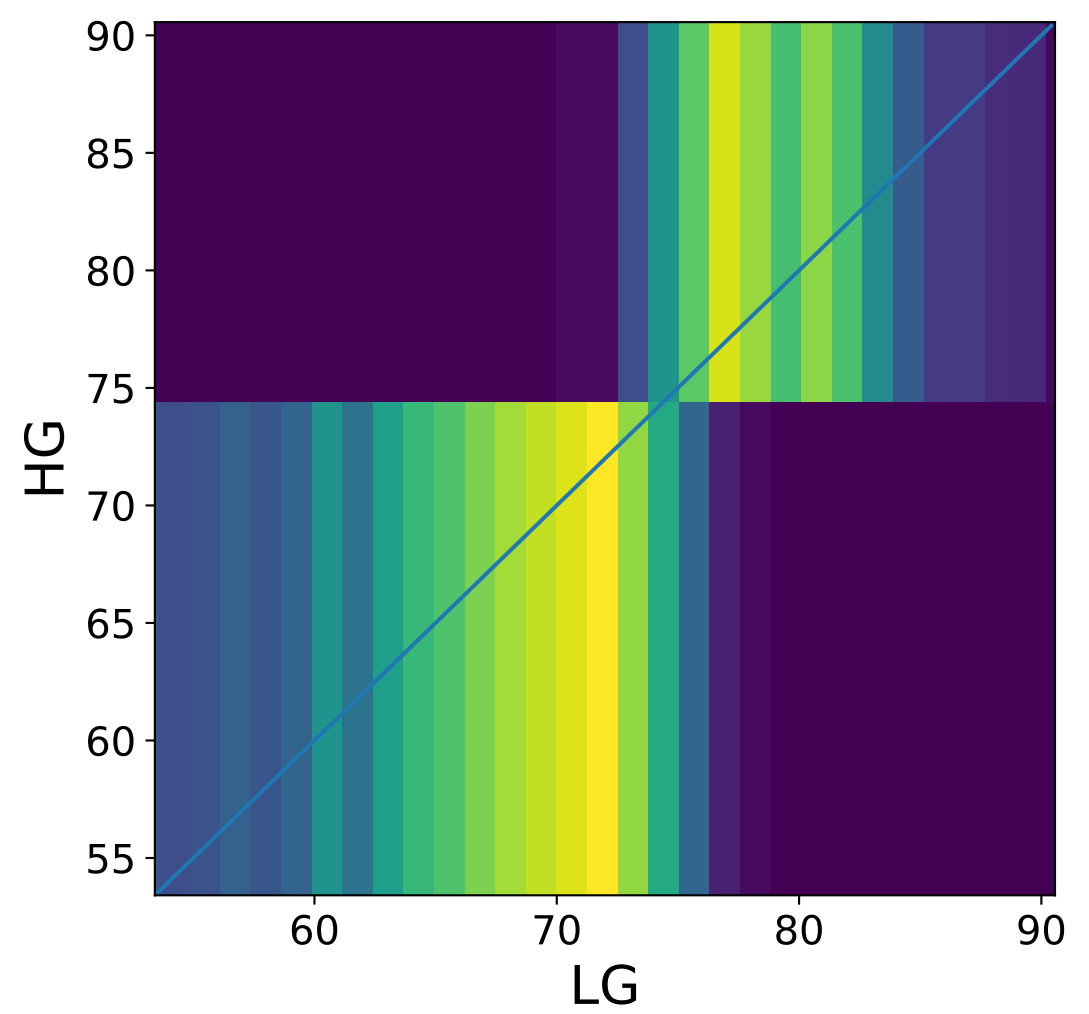
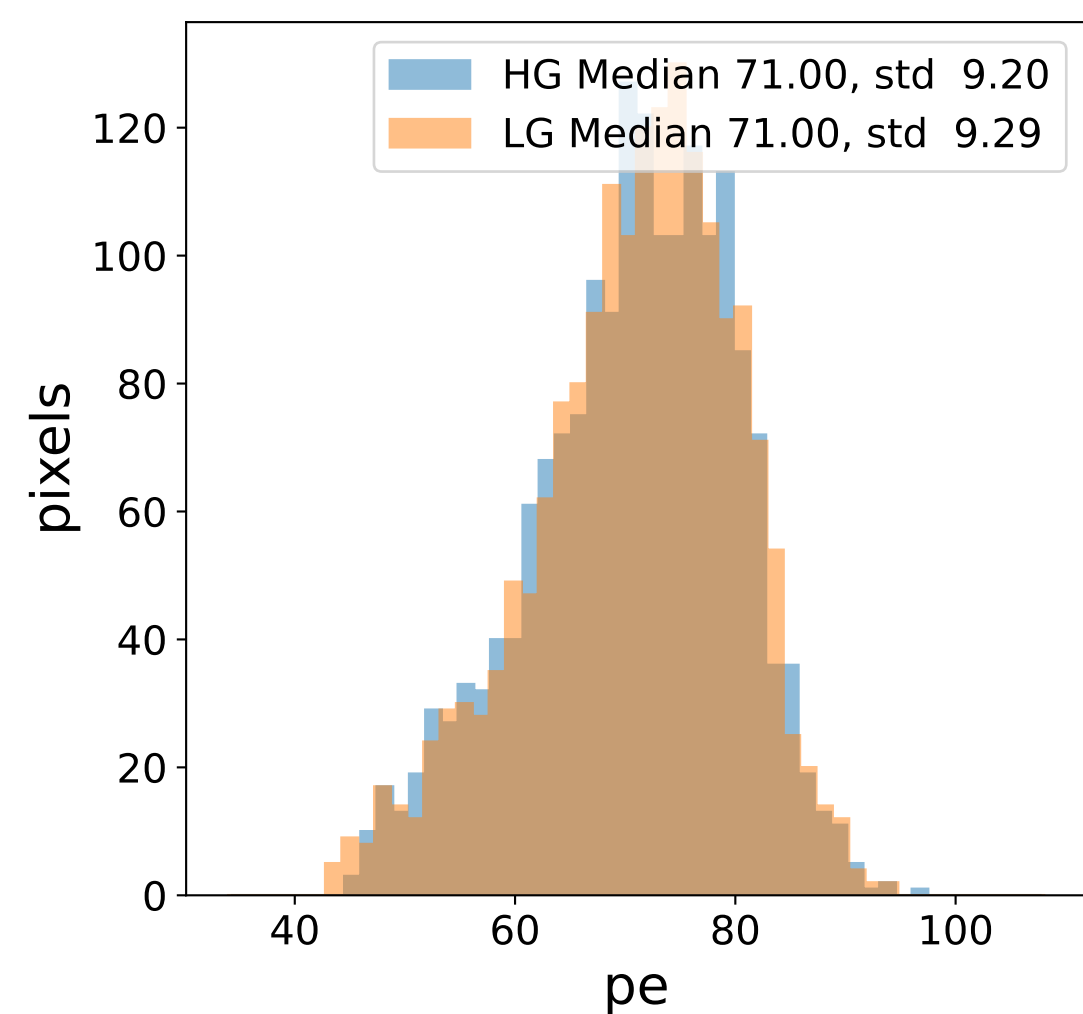
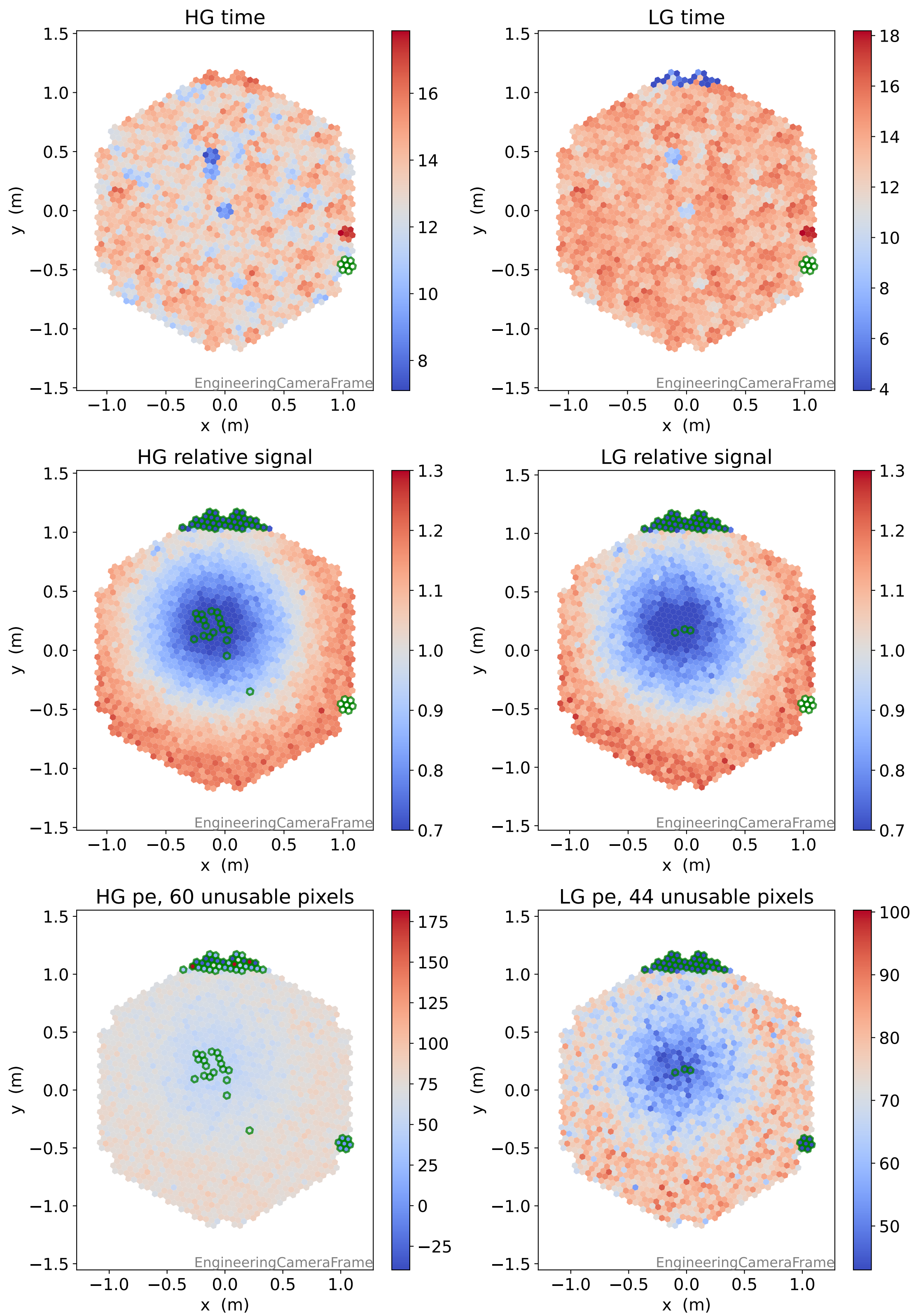


# Run 22897, Cat-A calibration

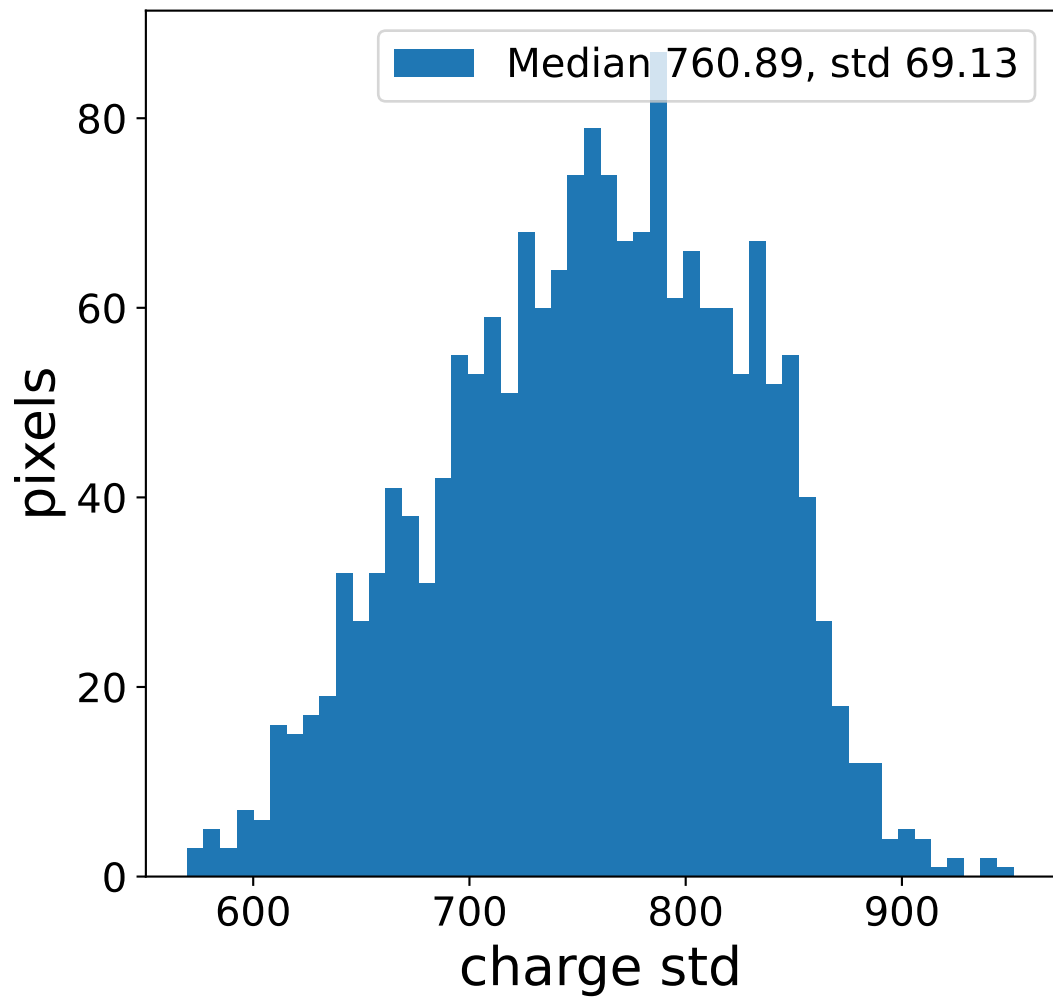
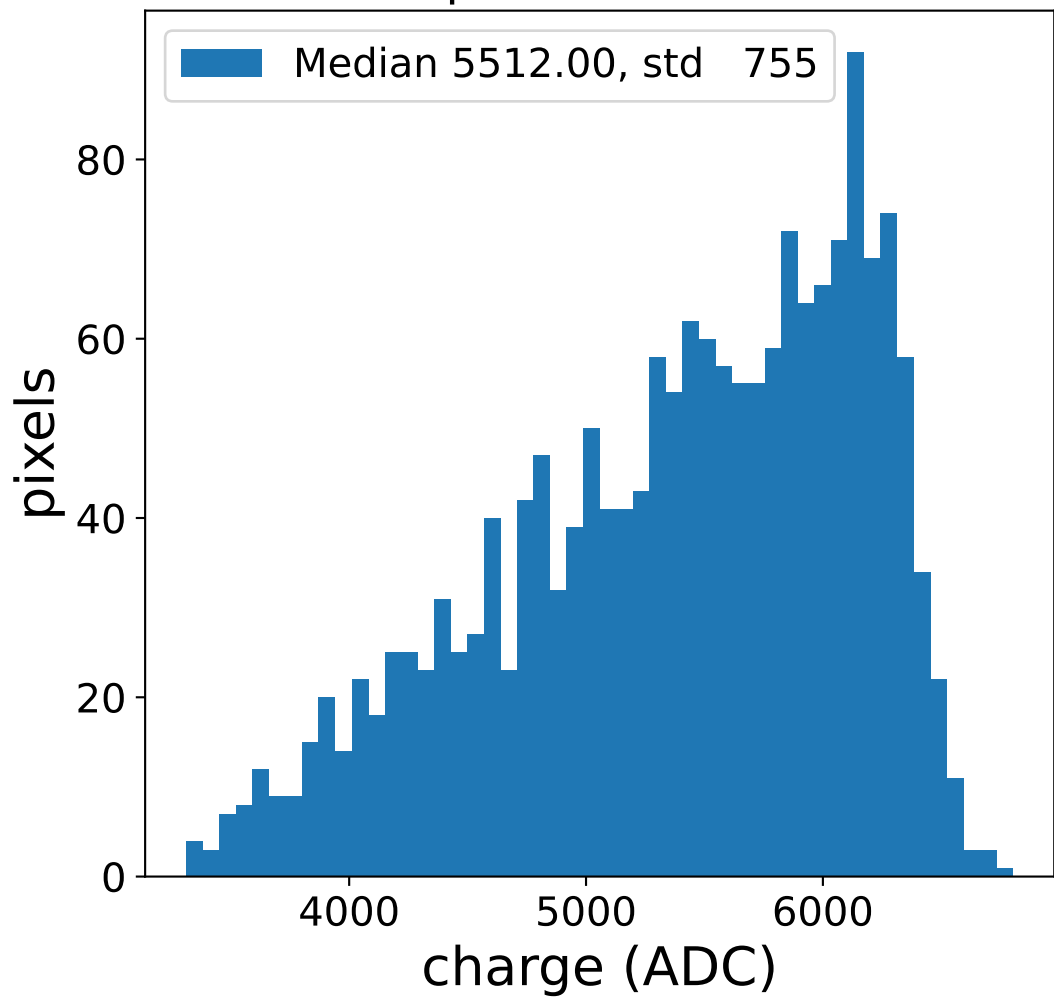


# Run 22897

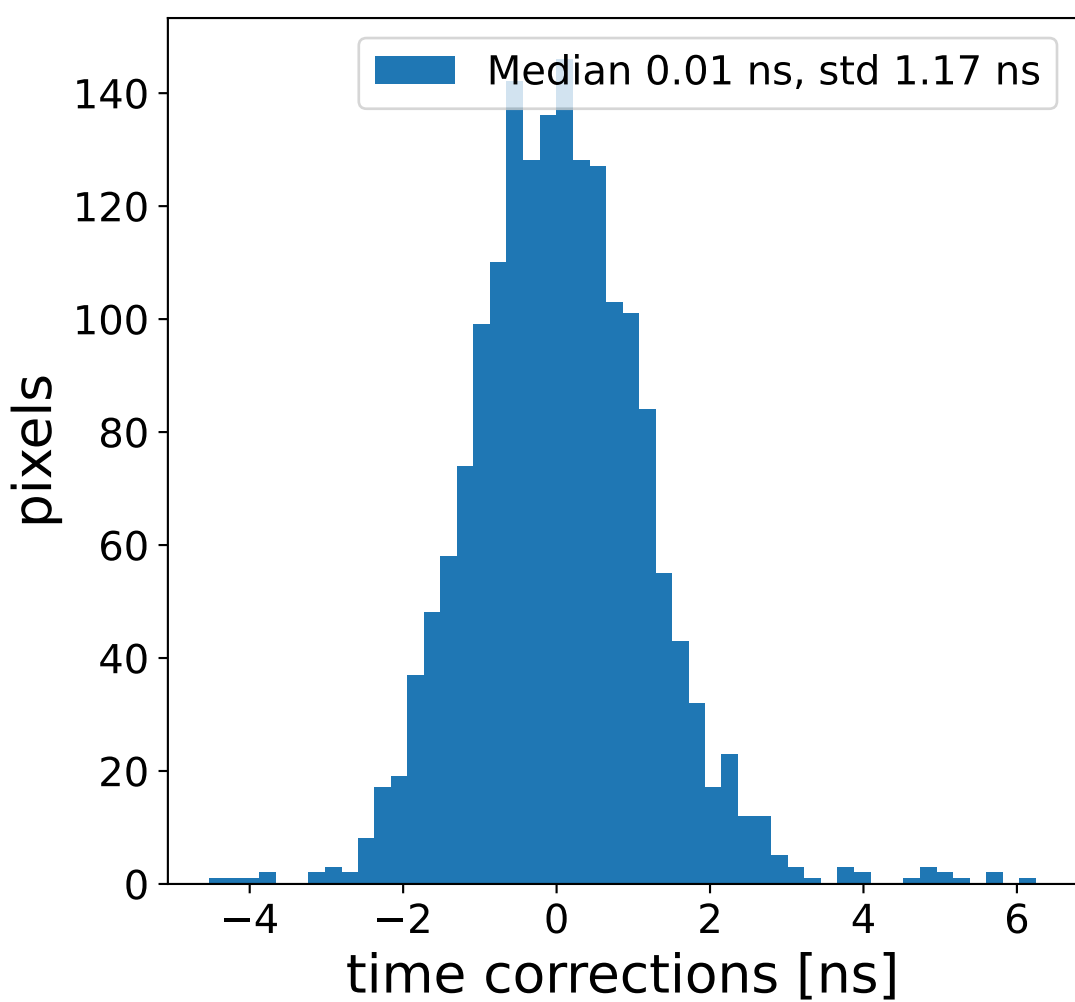
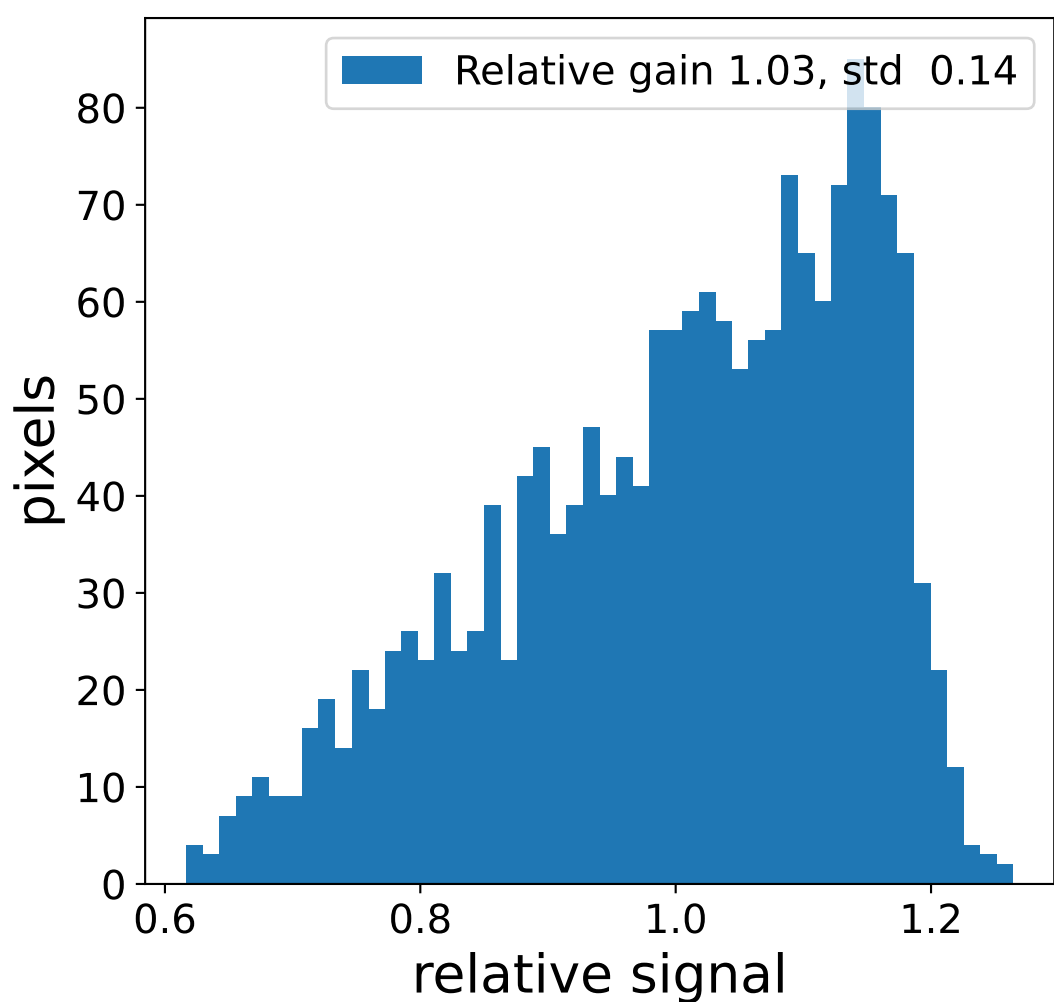
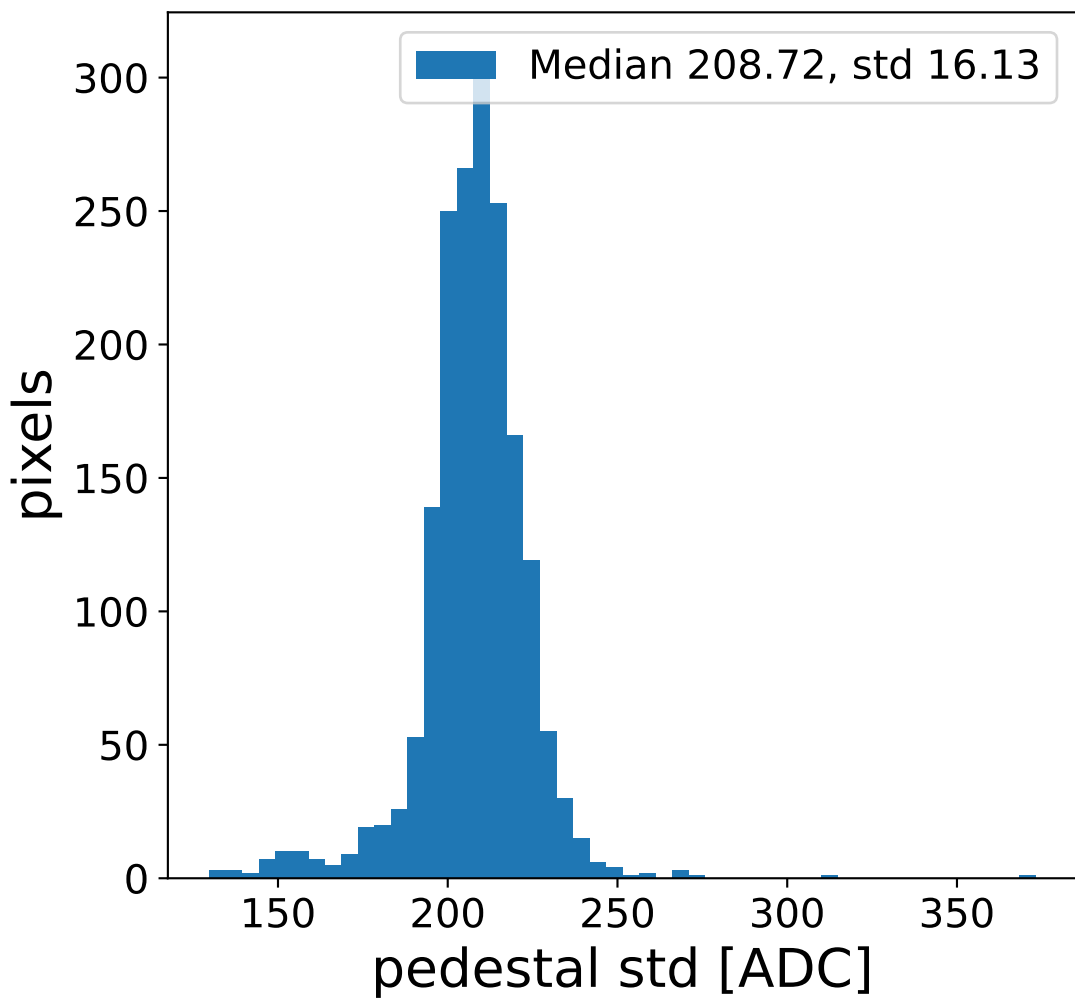
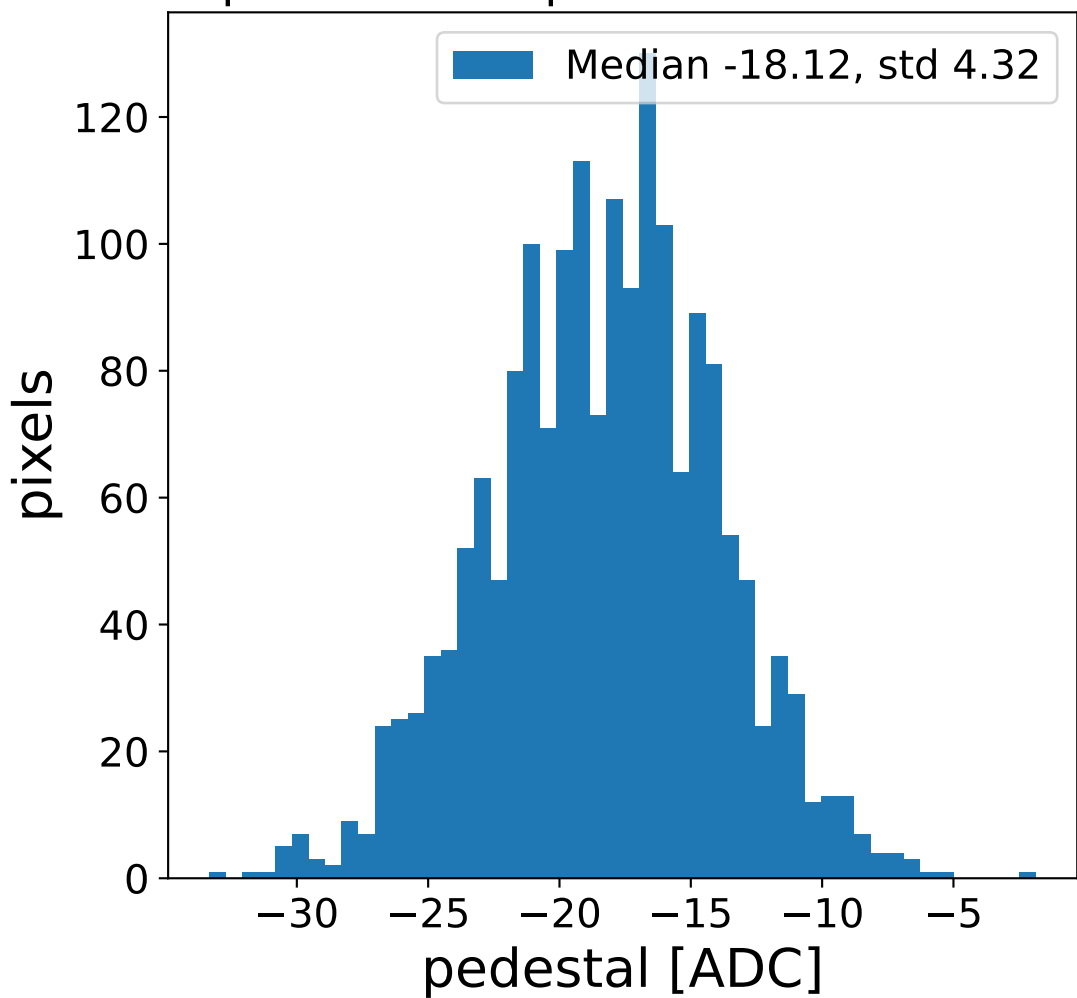


# Run 22897 channel: HG

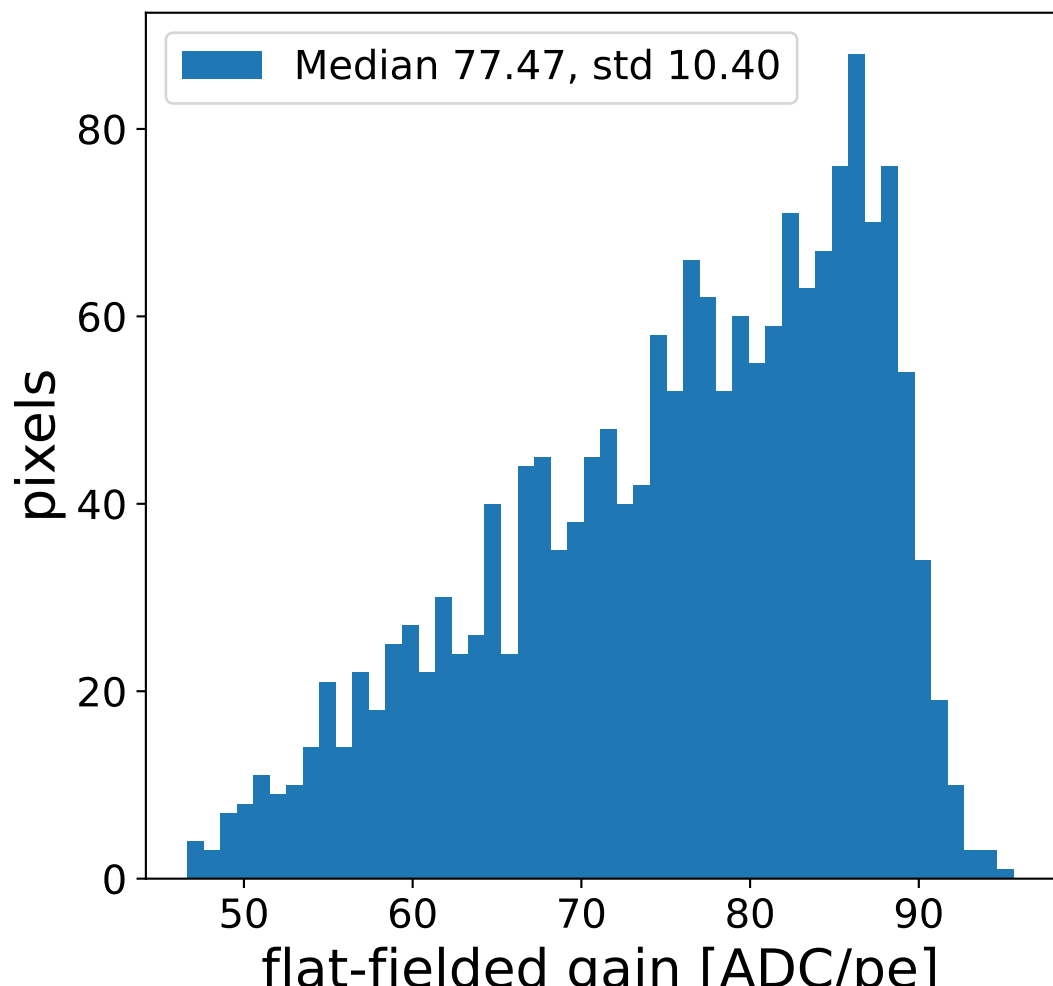
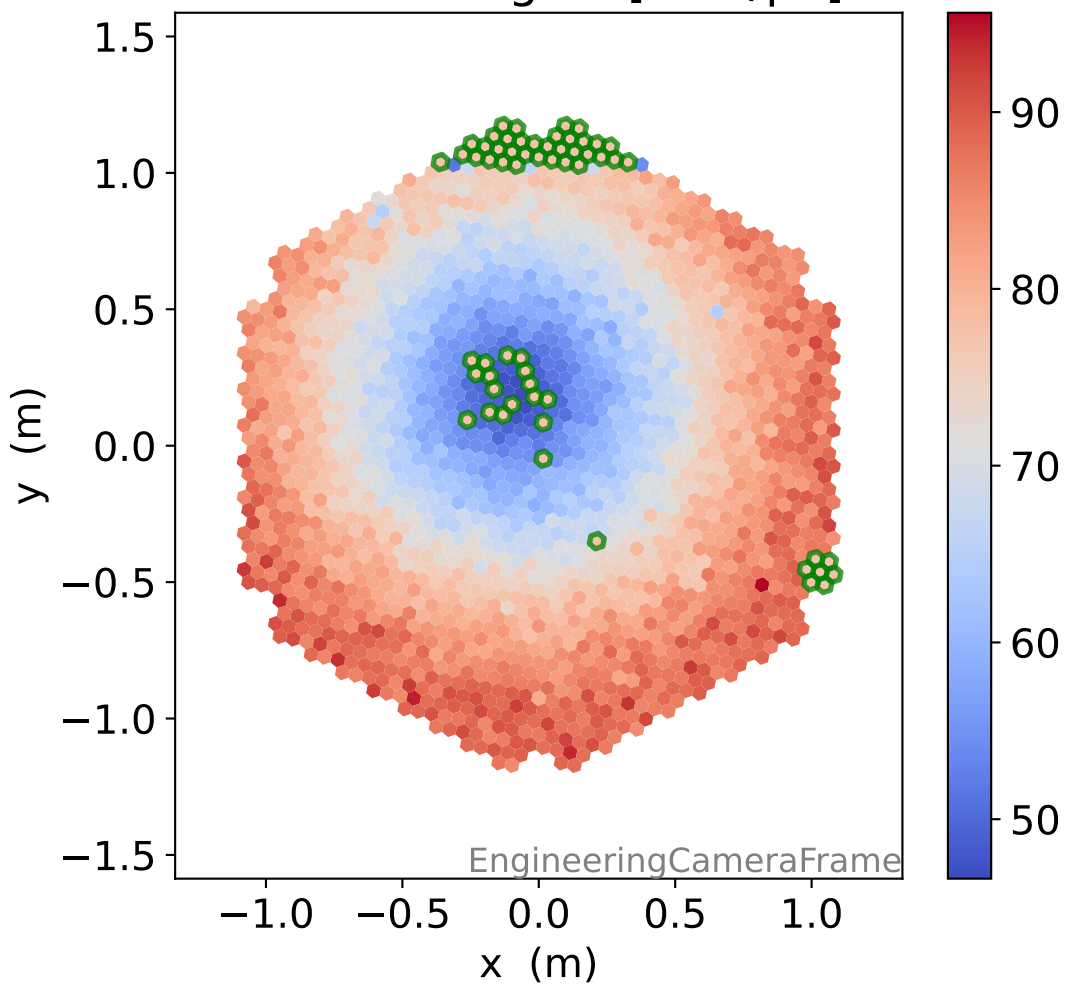
## FF sample of 10000 events



## pedestal sample of 10000 events

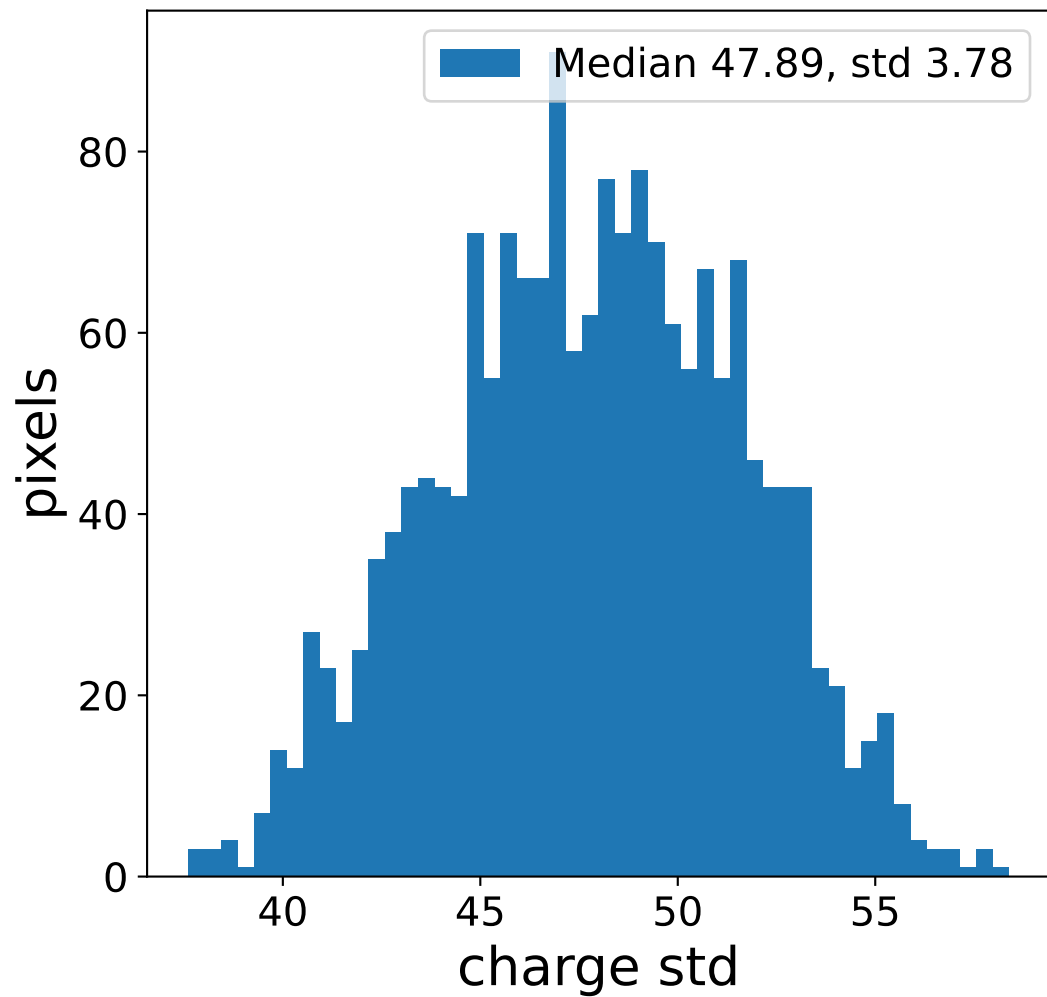
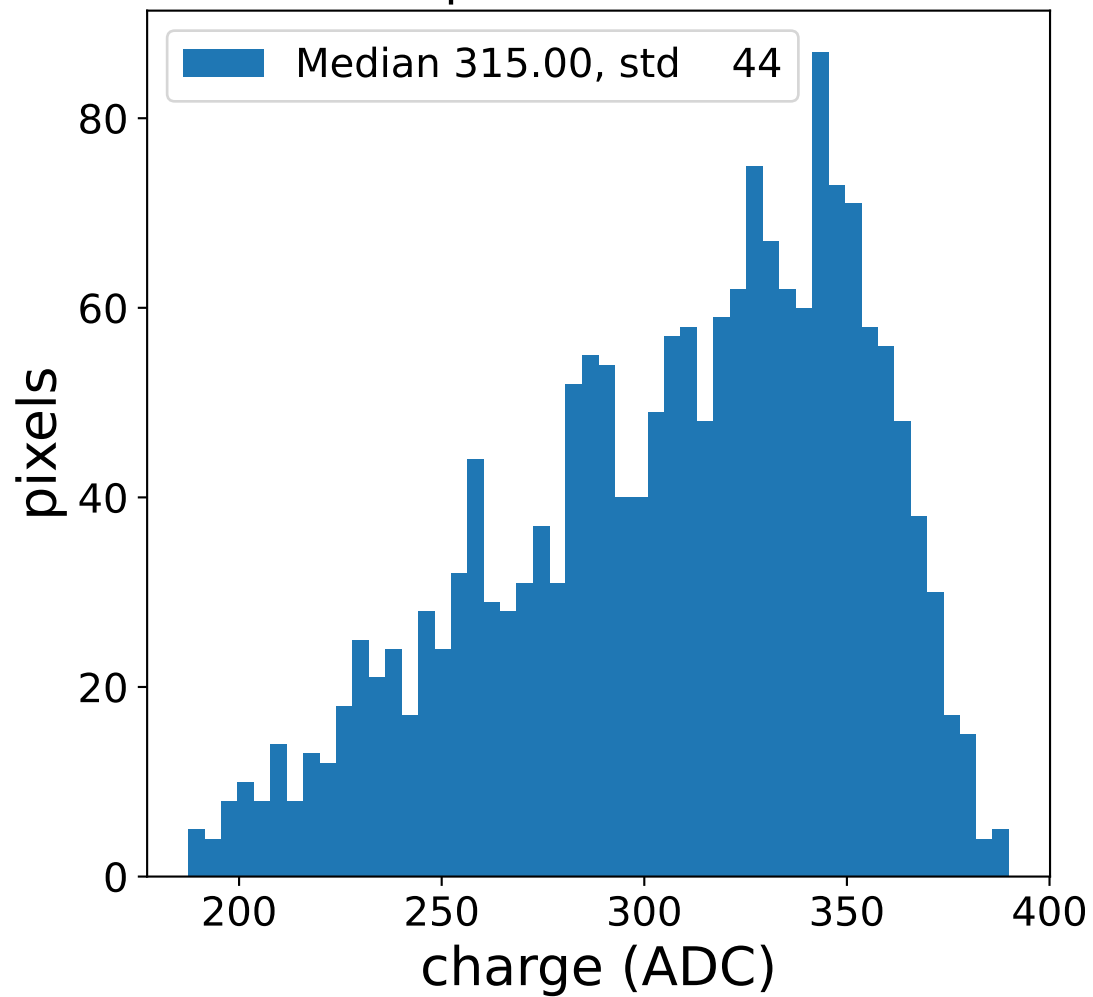


## flat-fielded gain [ADC/pe]

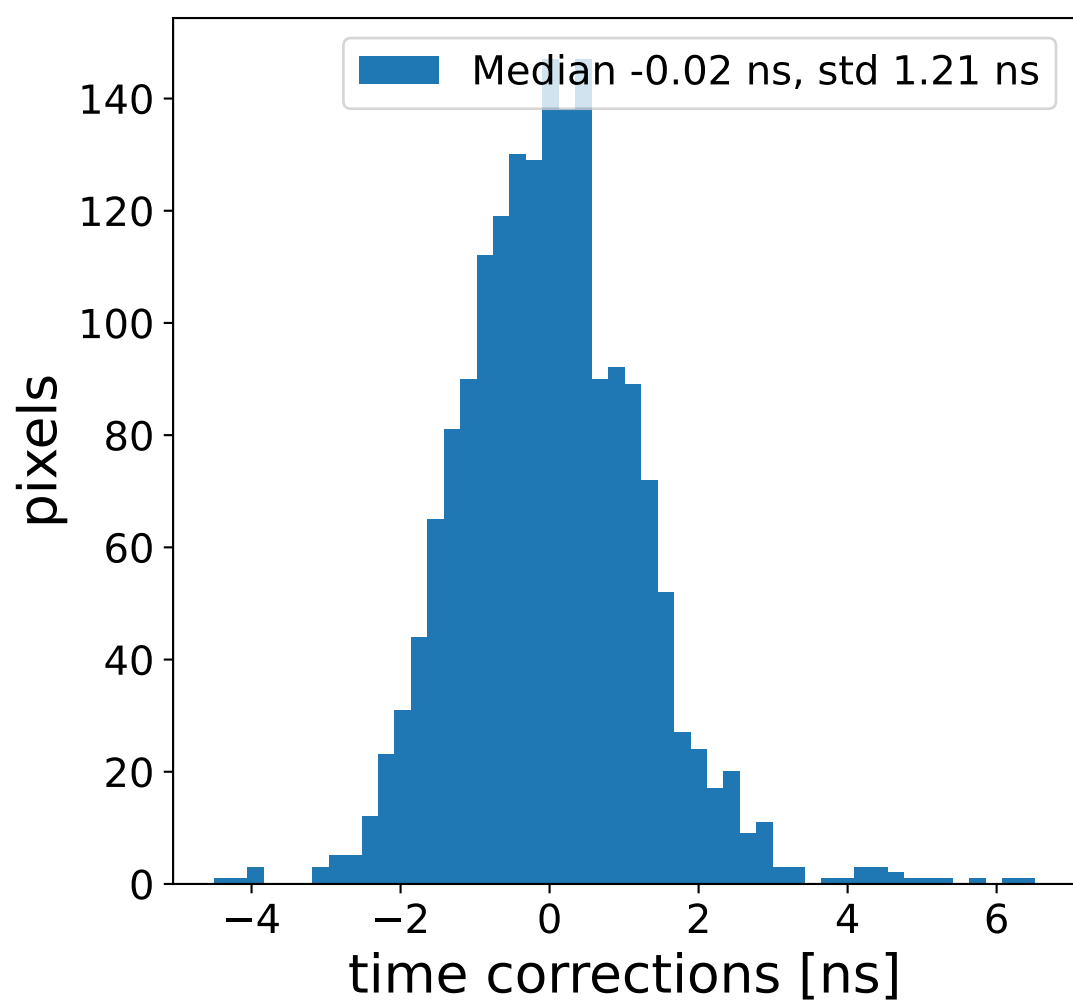
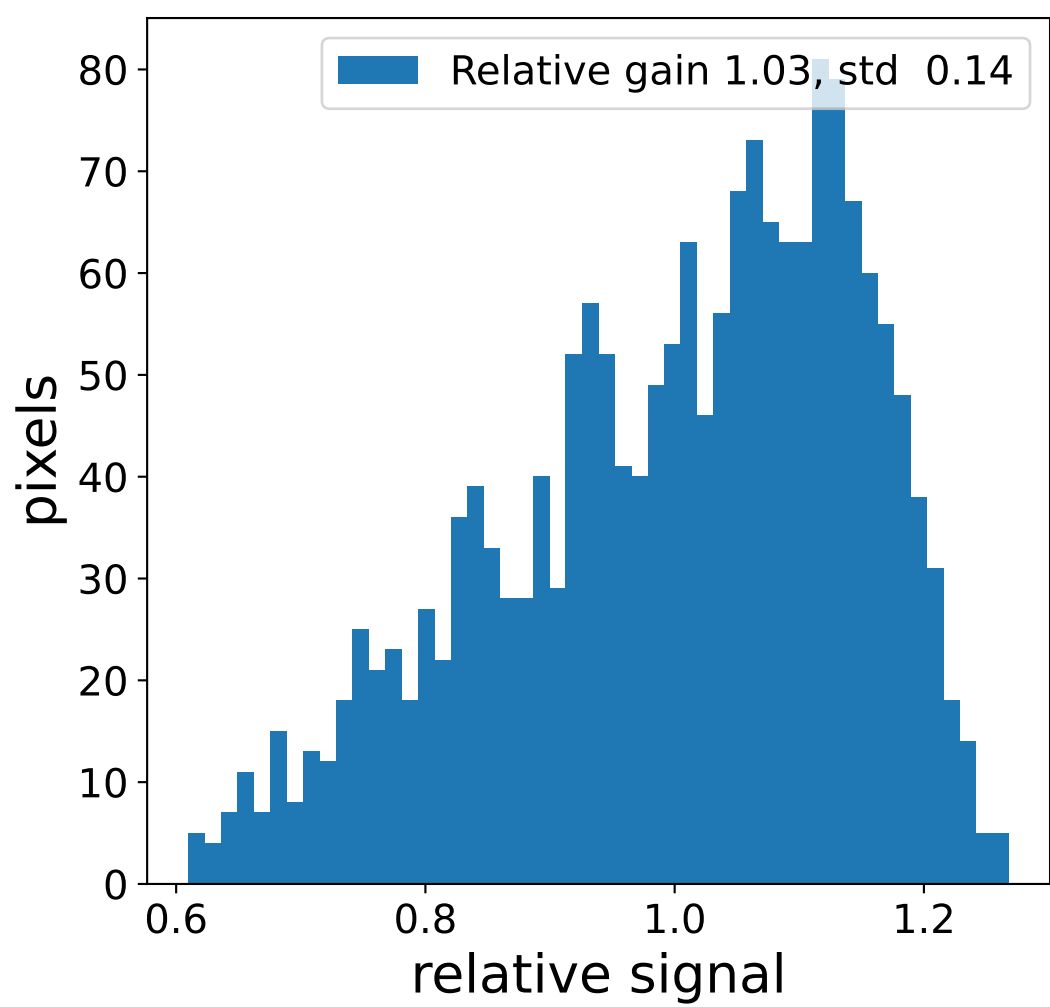
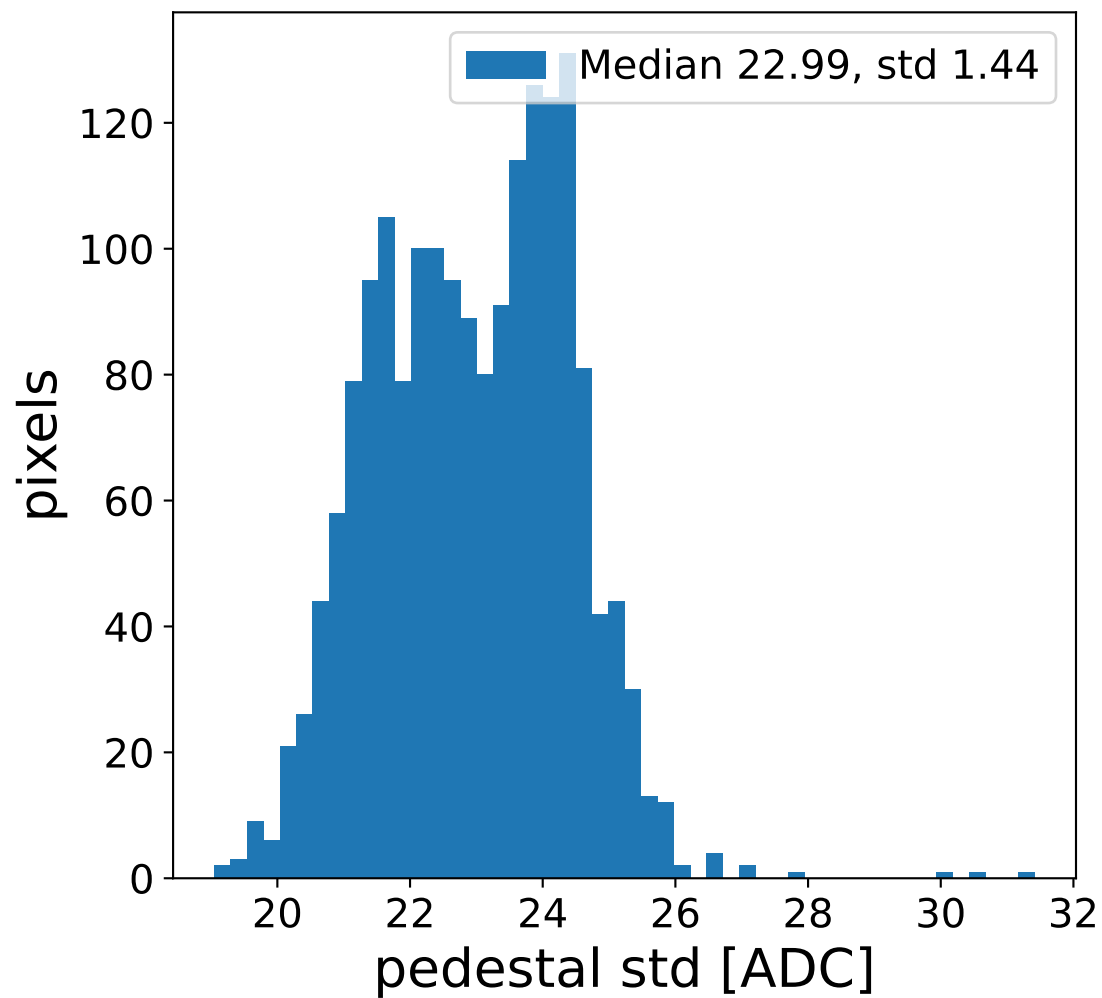
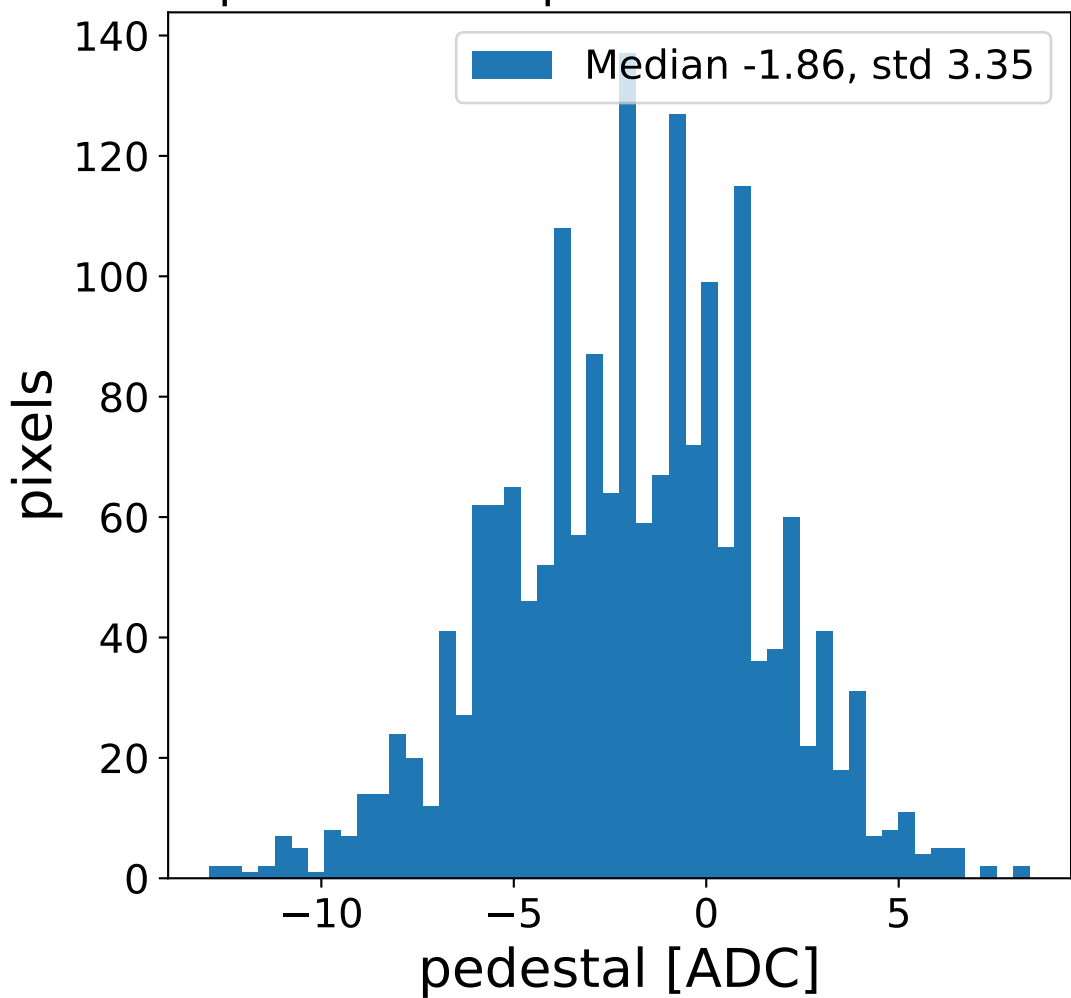


# Run 22897 channel: LG

### FF sample of 10000 events



### pedestal sample of 10000 events



### flat-fielded gain [ADC/pe]

