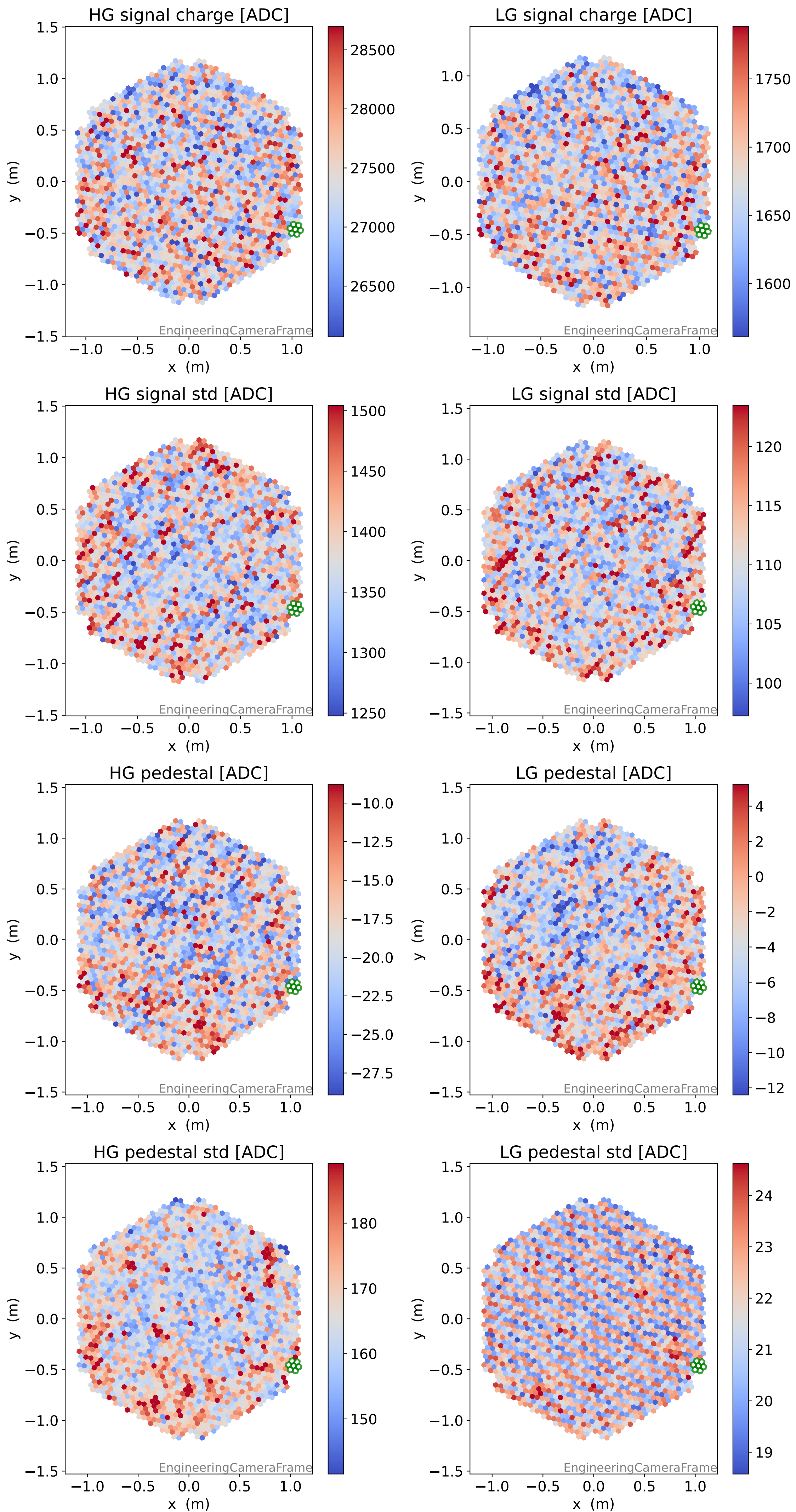
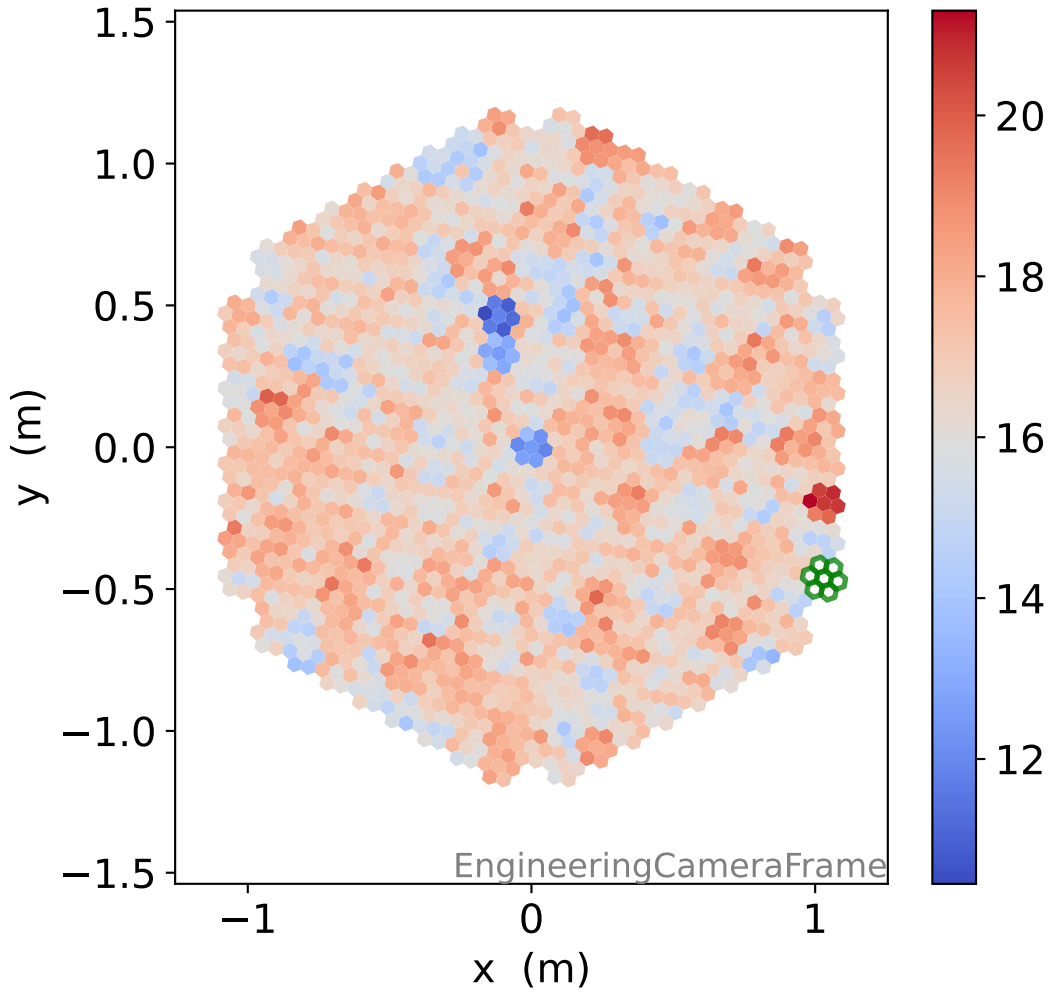


# Run 21005, Cat-A calibration

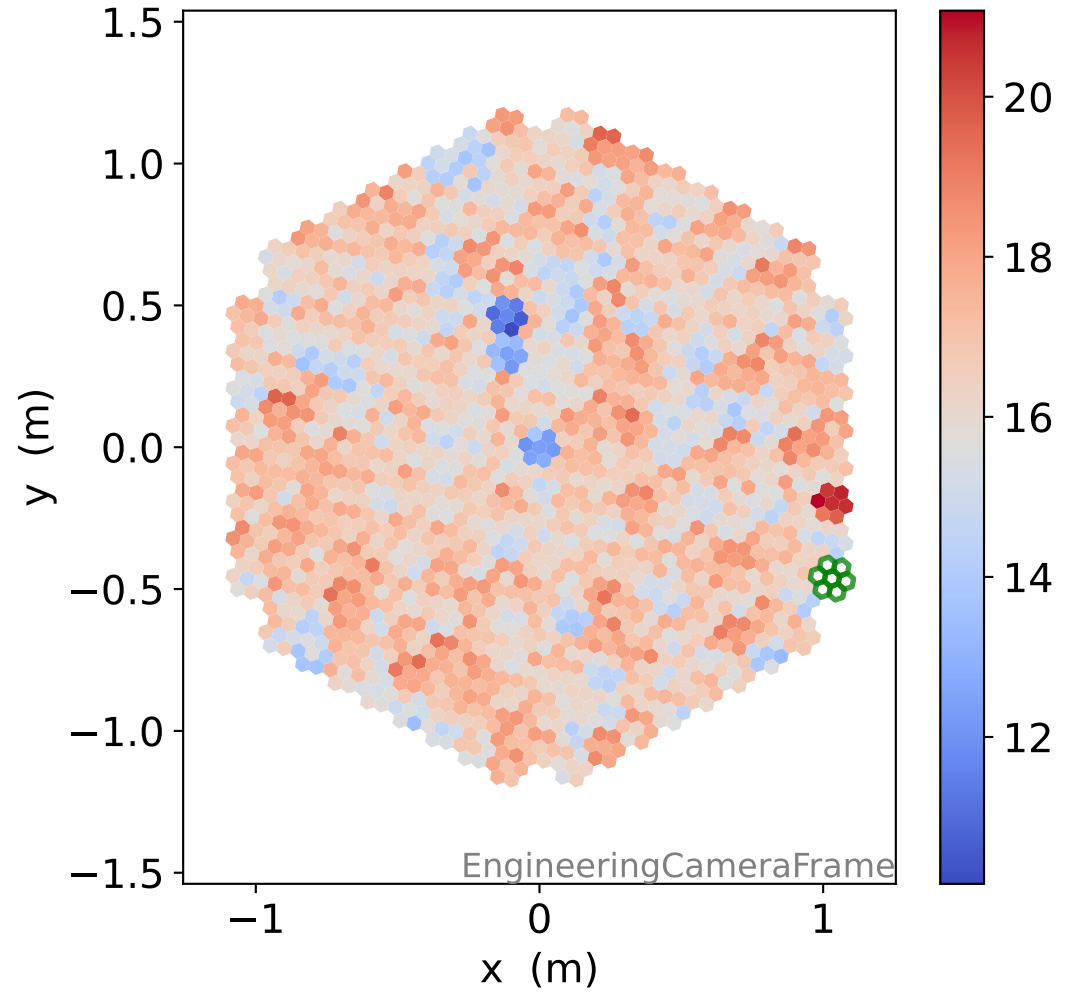


# Run 21005

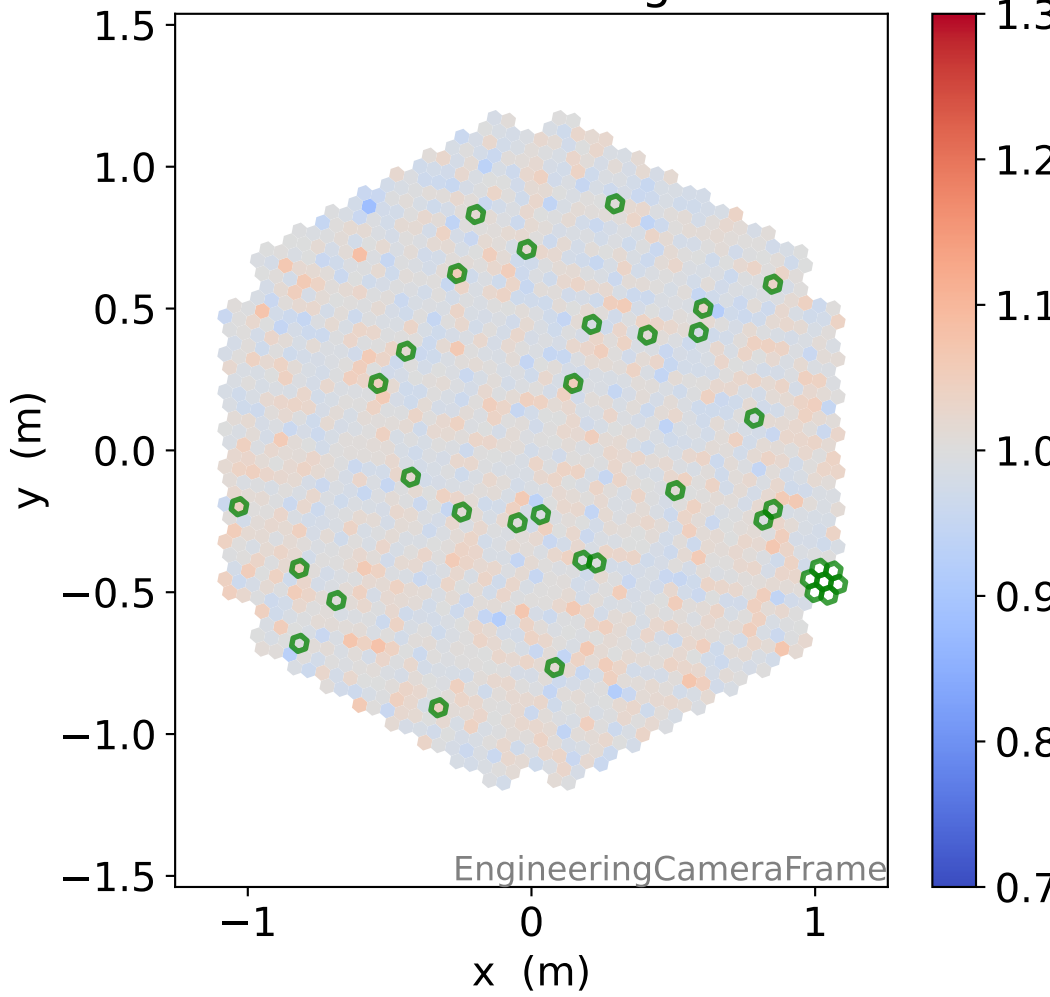
### HG time



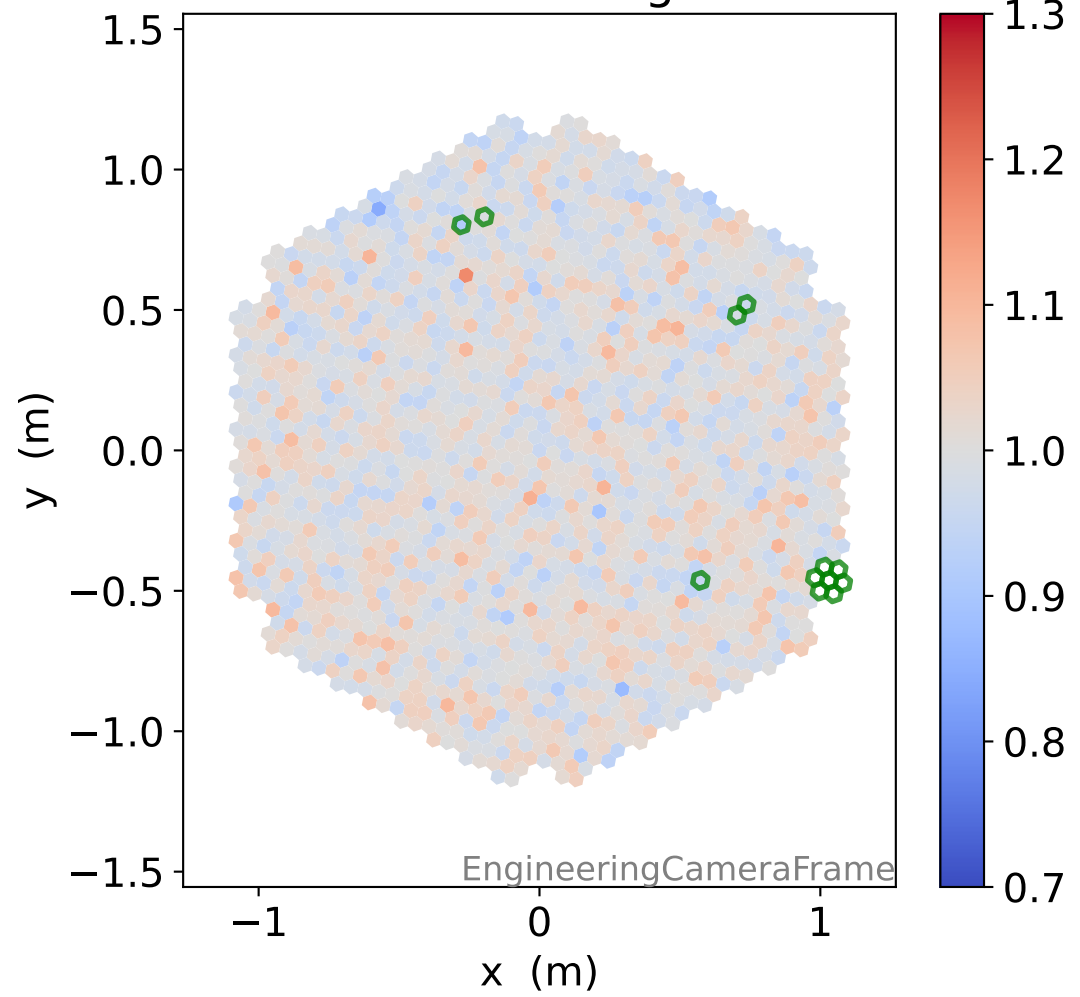
### LG time



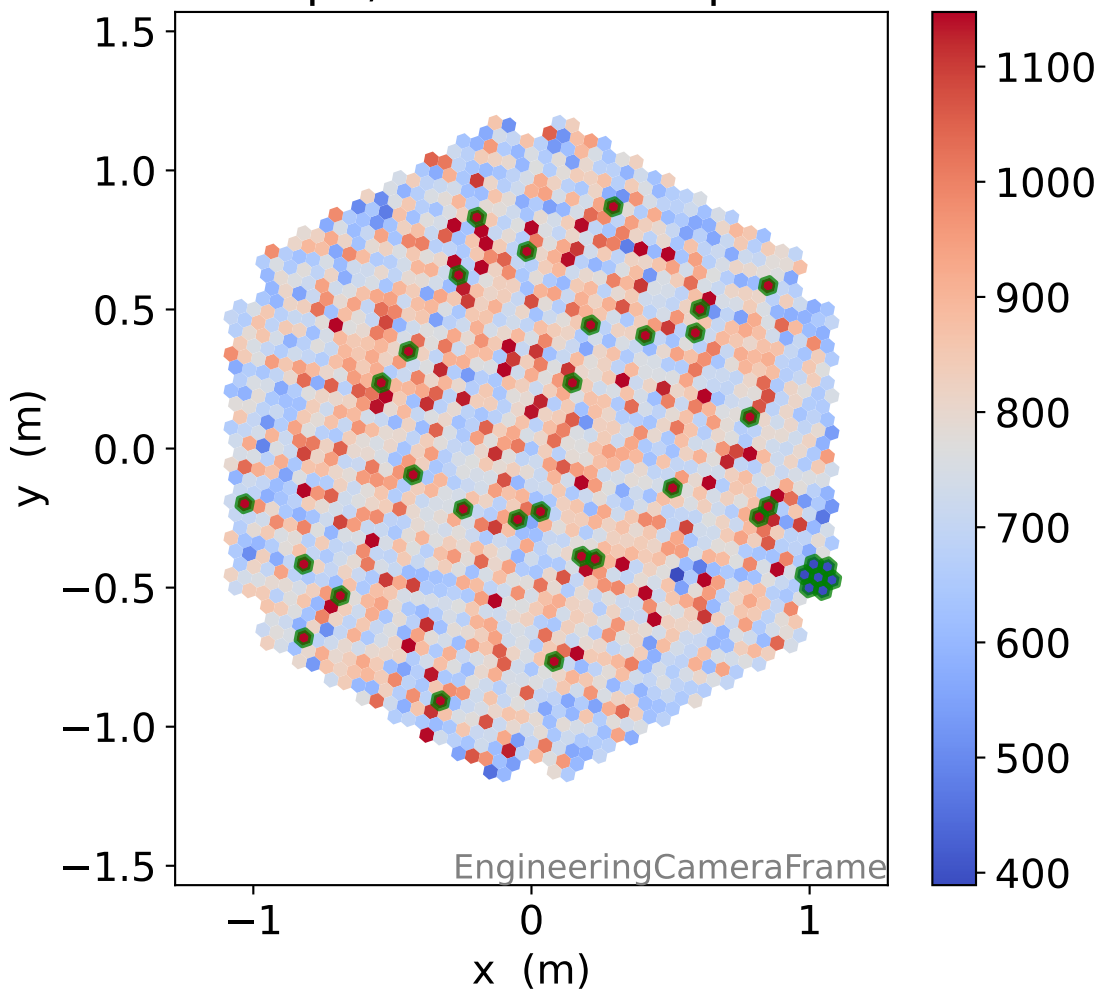
### HG relative signal



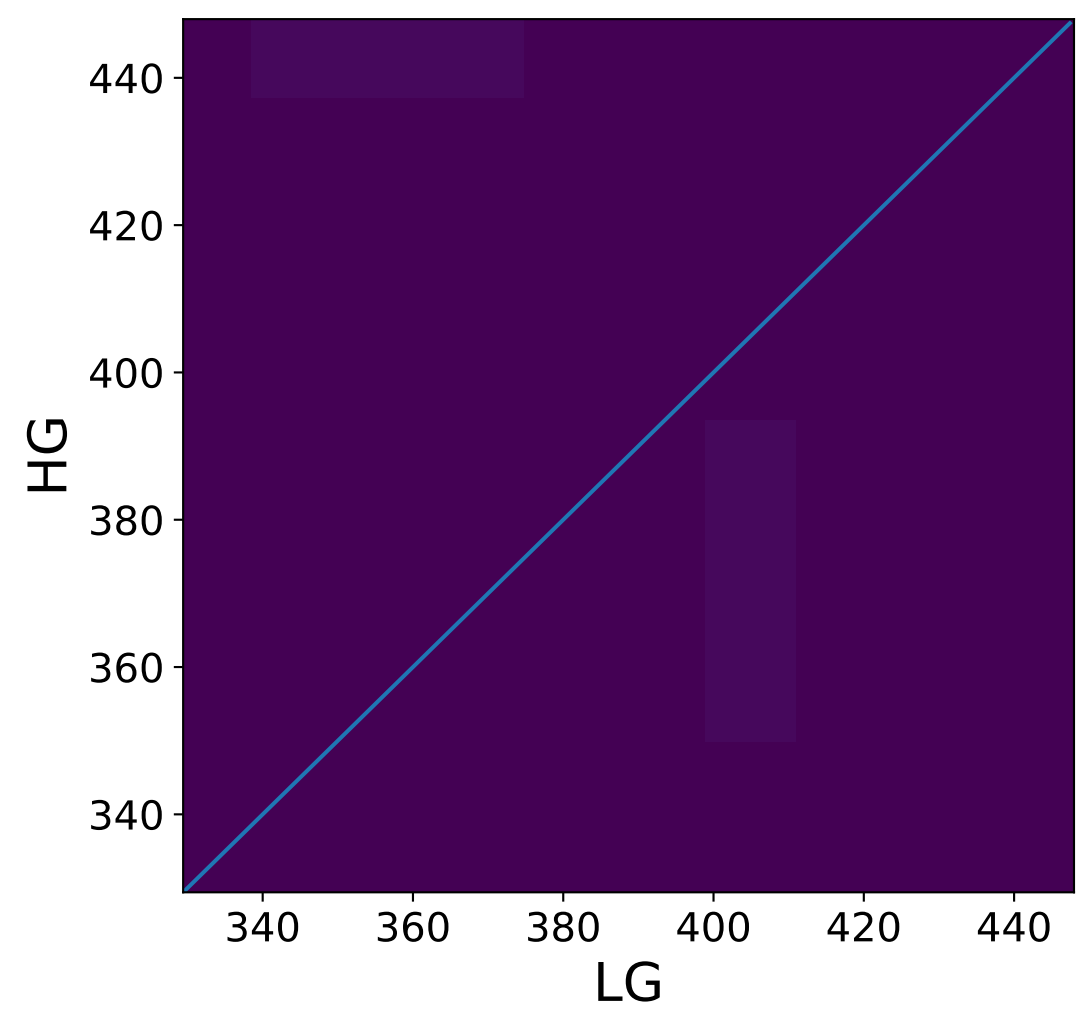
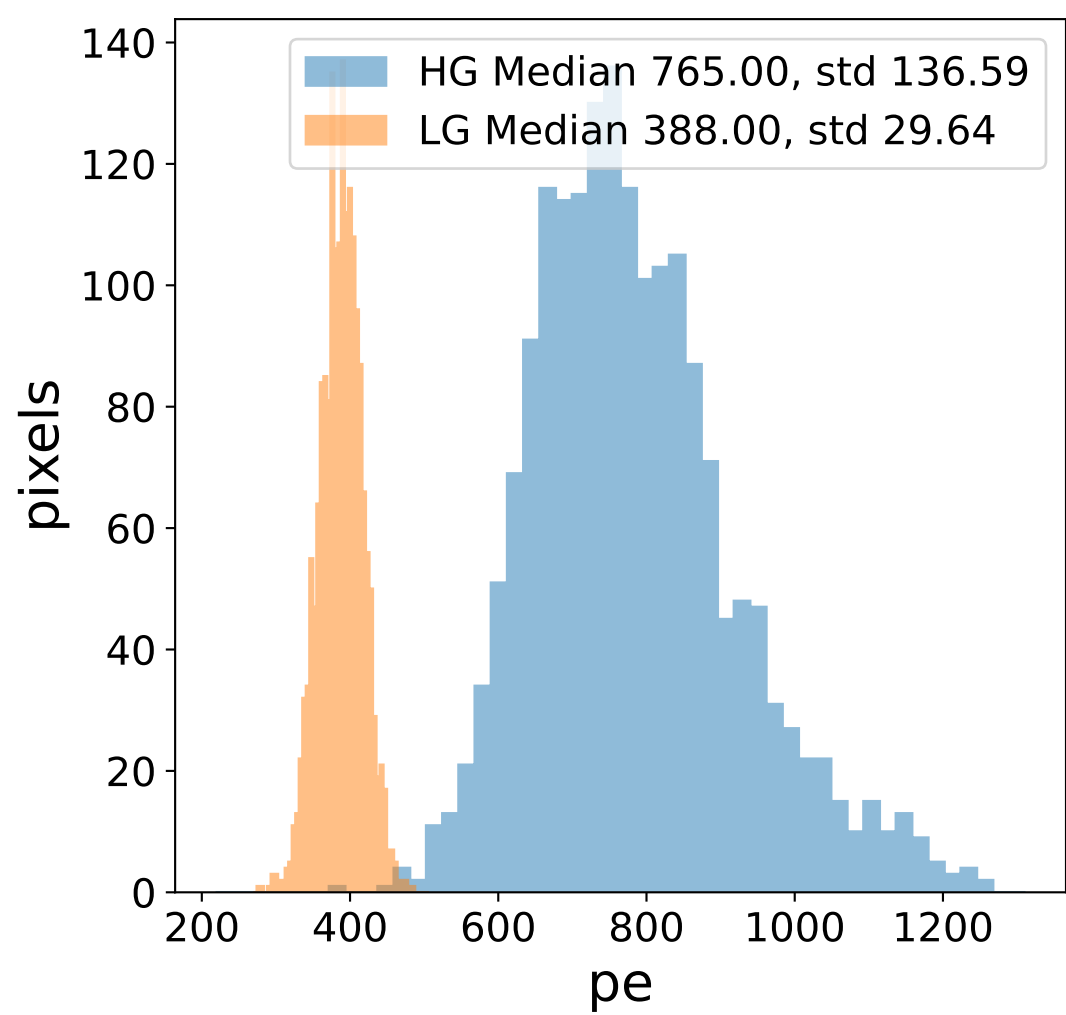
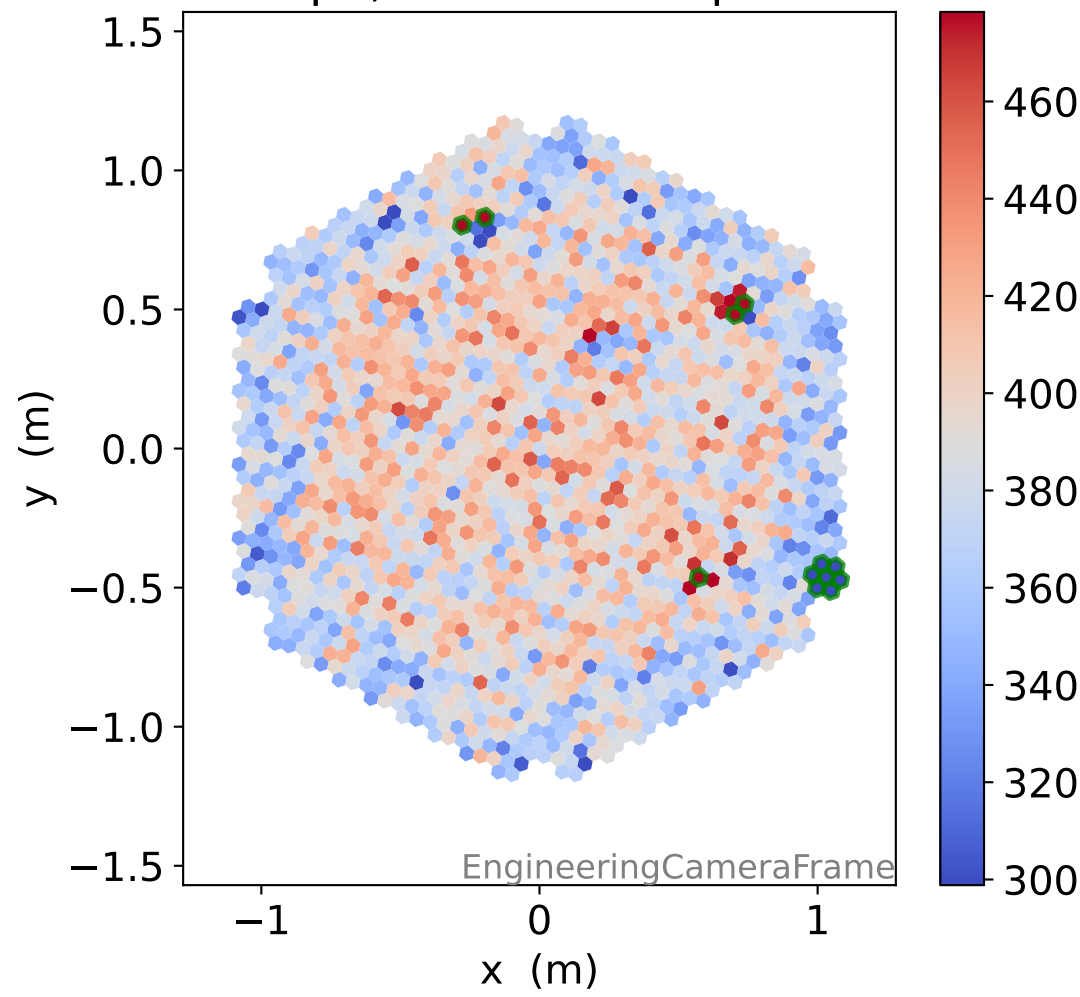
### LG relative signal



### HG pe, 35 unusable pixels

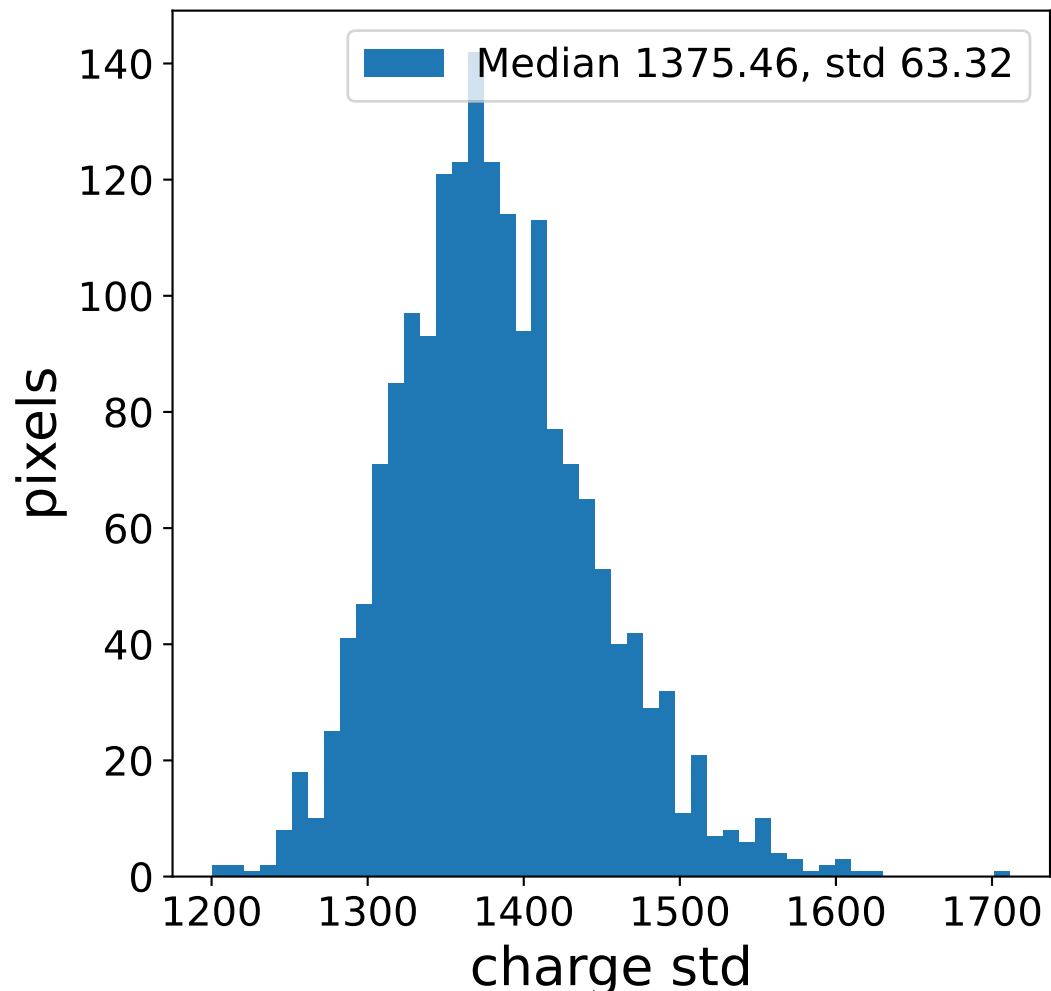
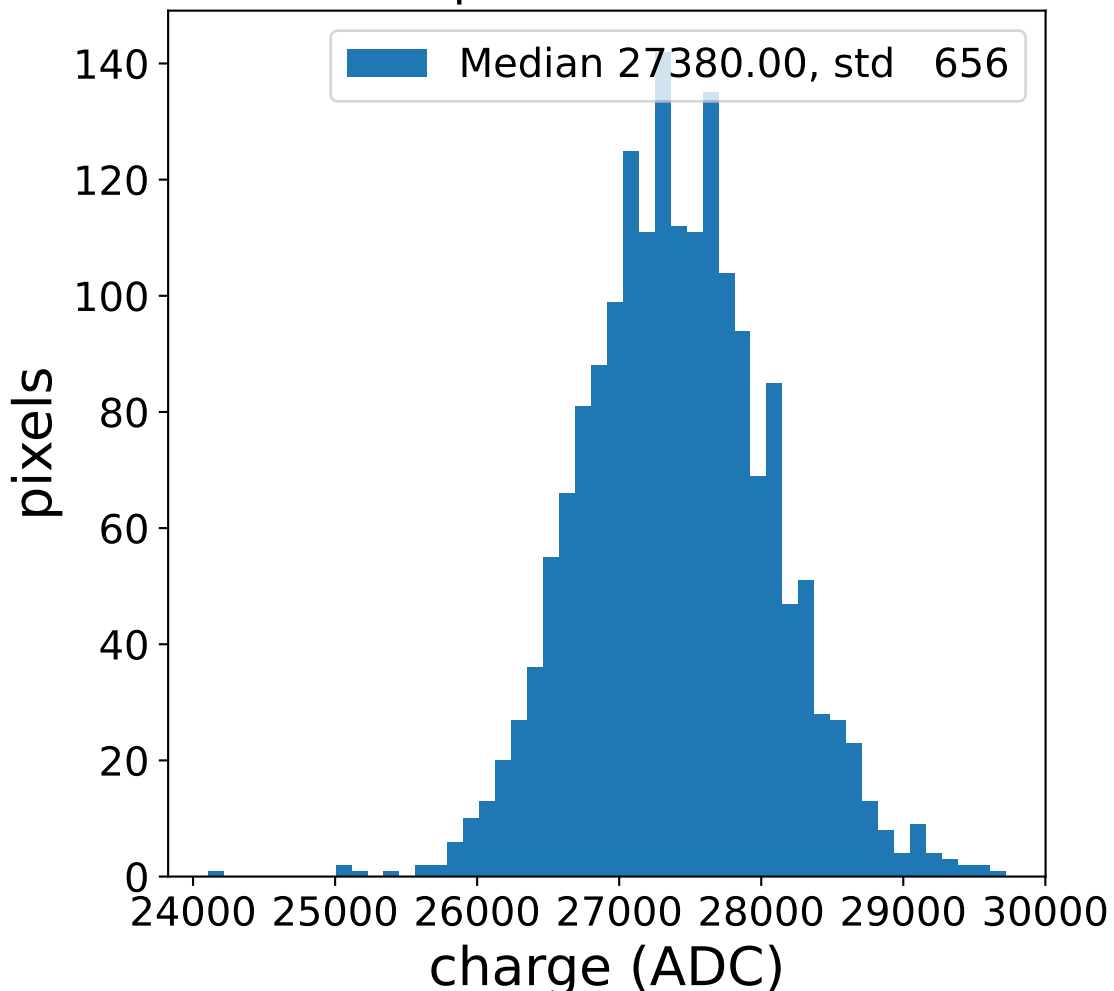


### LG pe, 12 unusable pixels

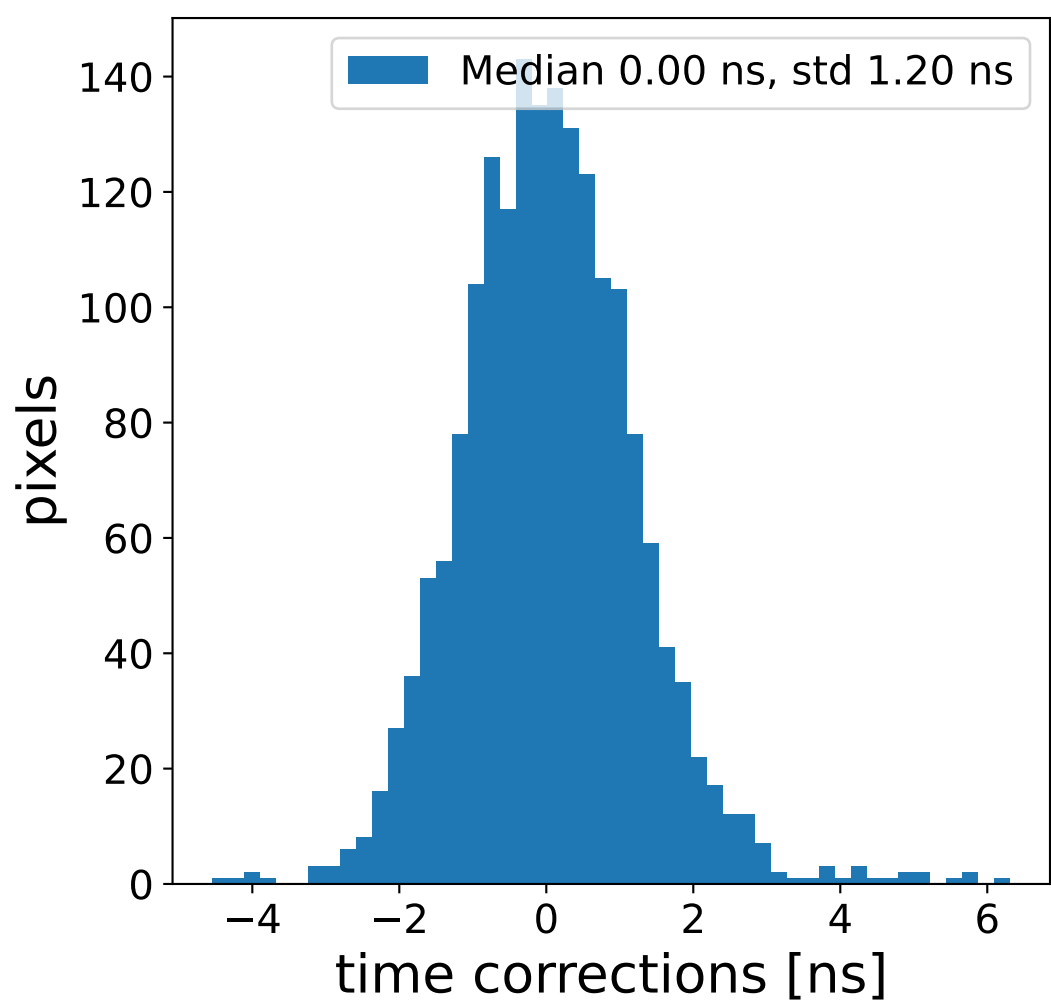
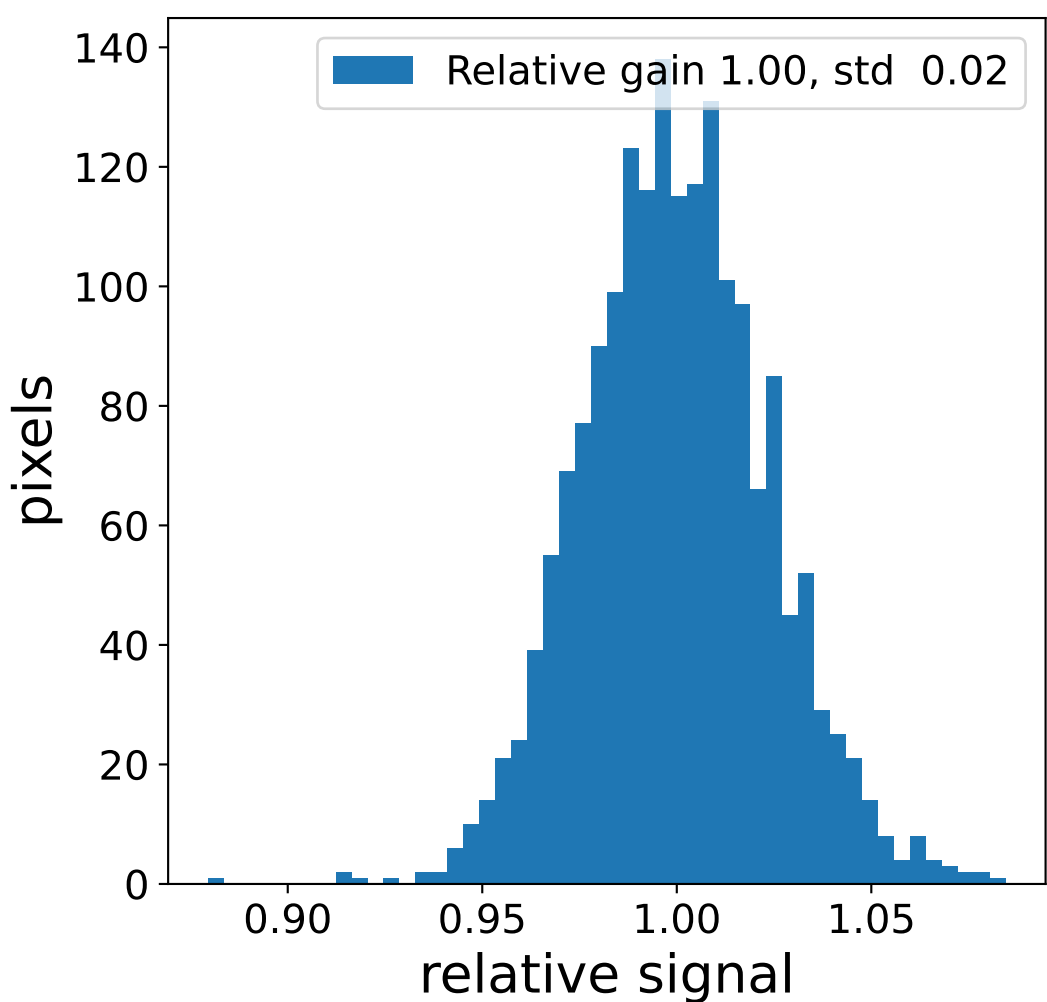
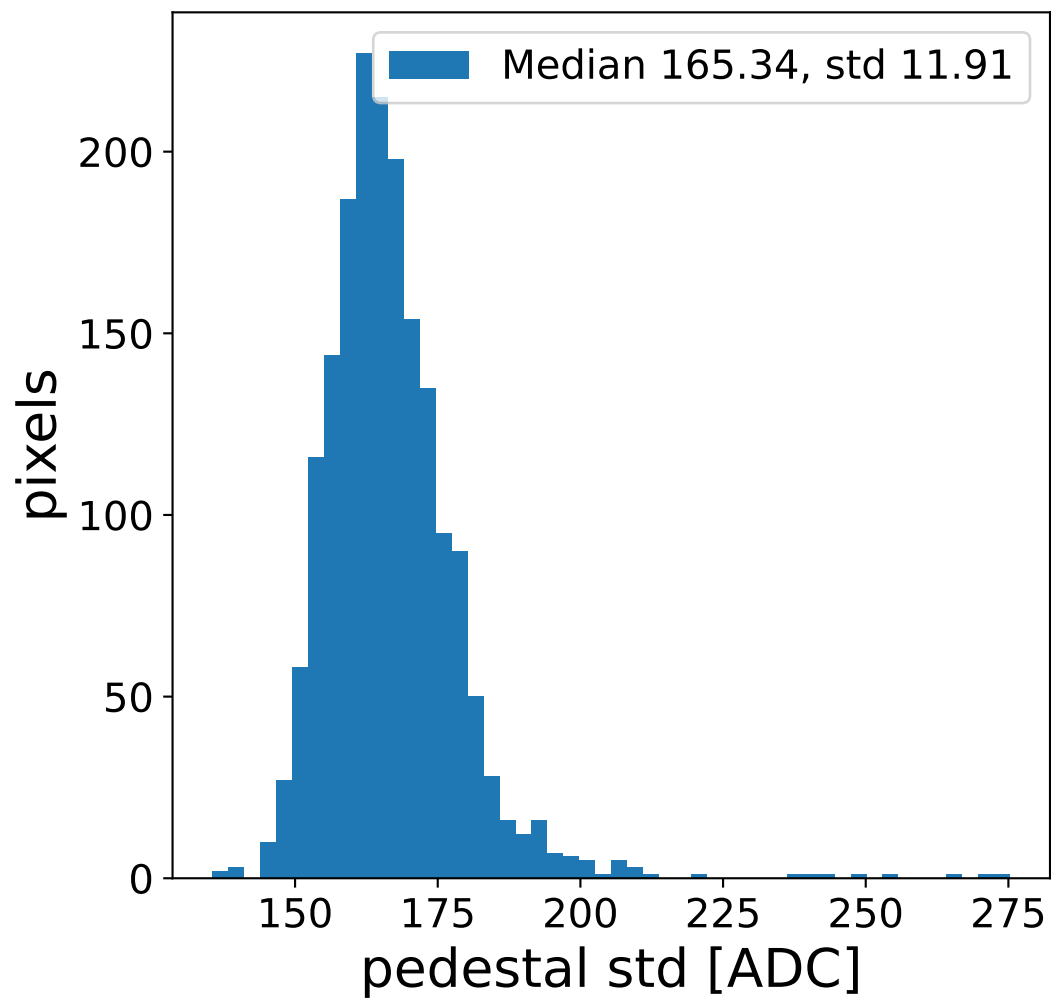
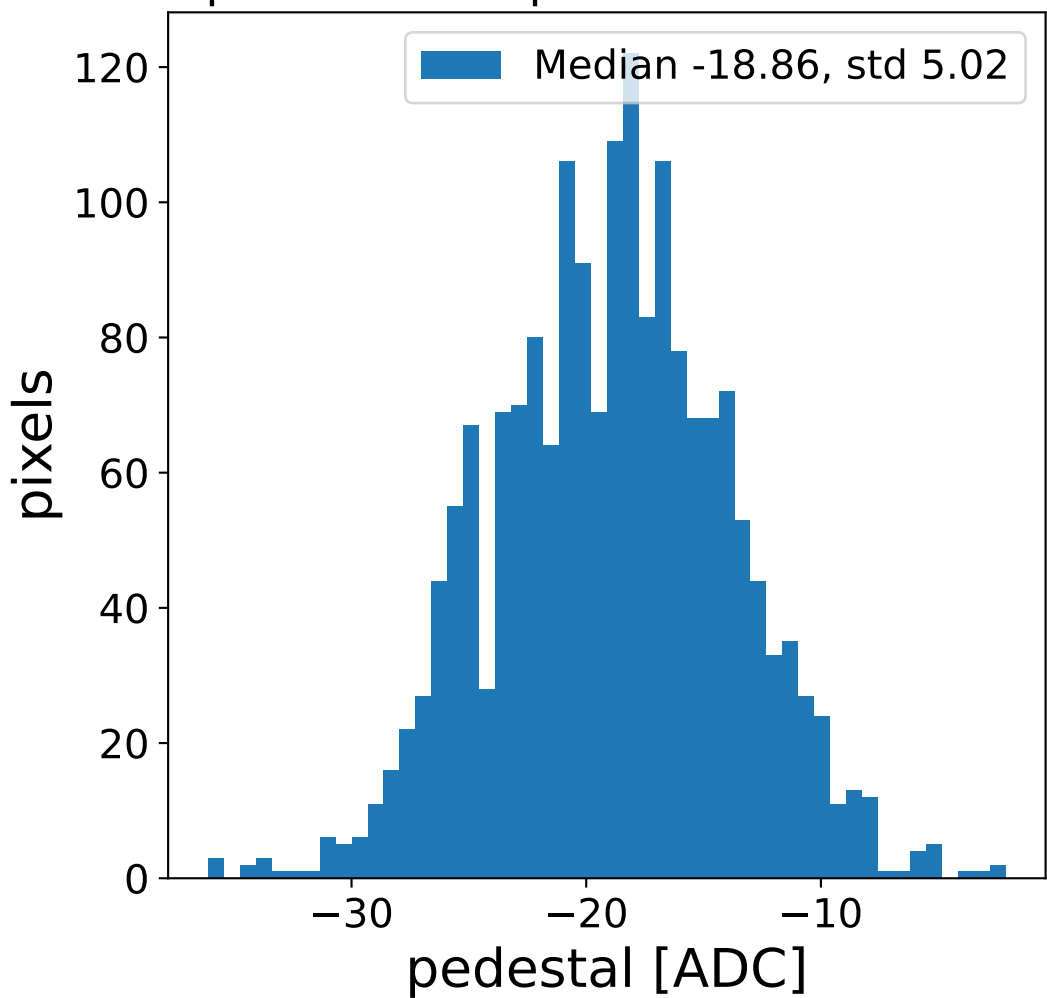


# Run 21005 channel: HG

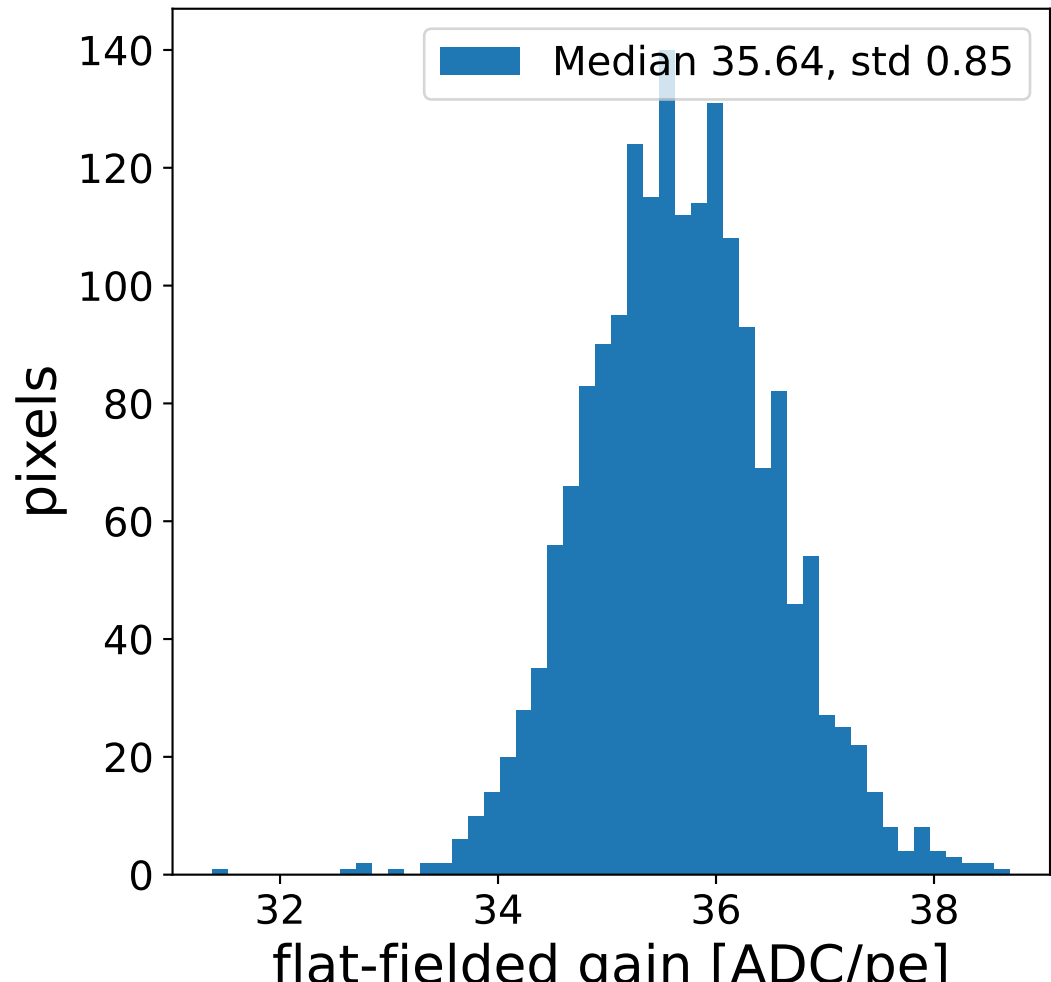
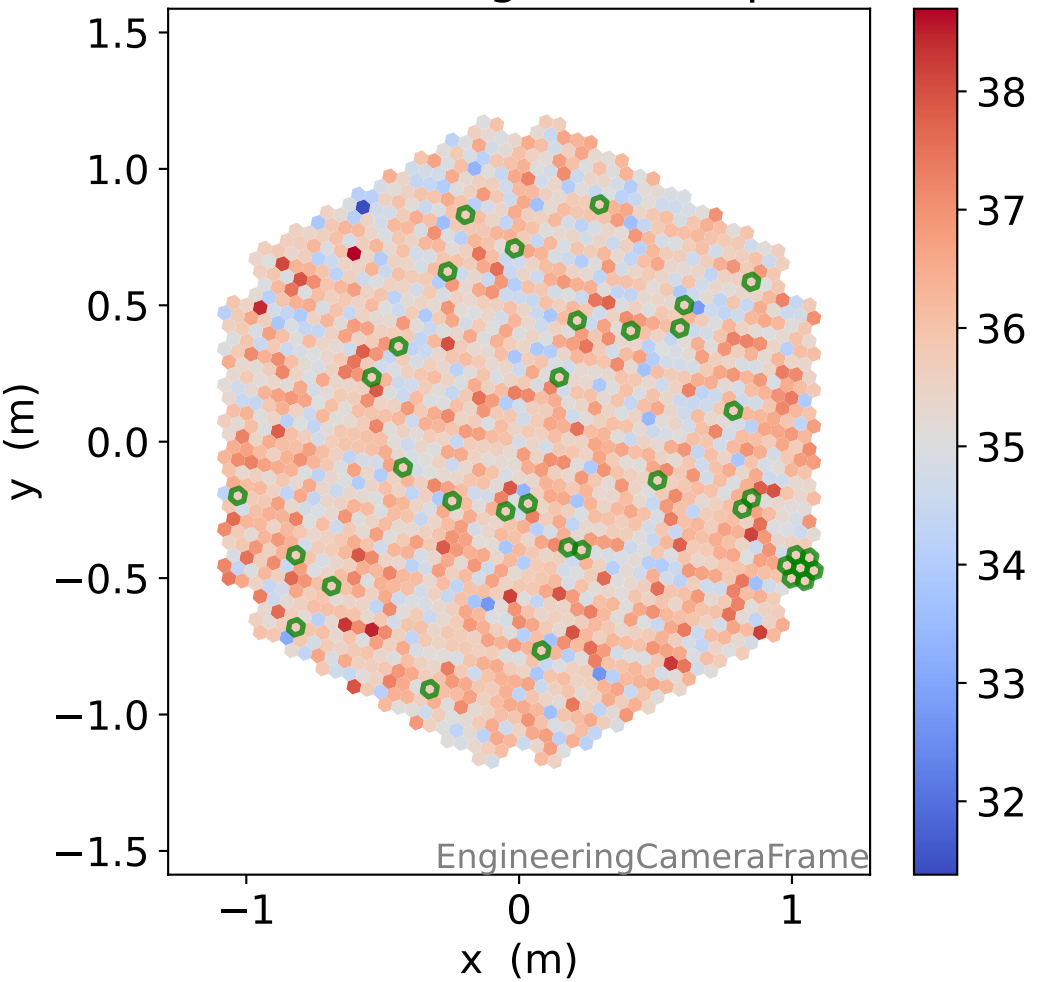
## FF sample of 10000 events



## pedestal sample of 10000 events

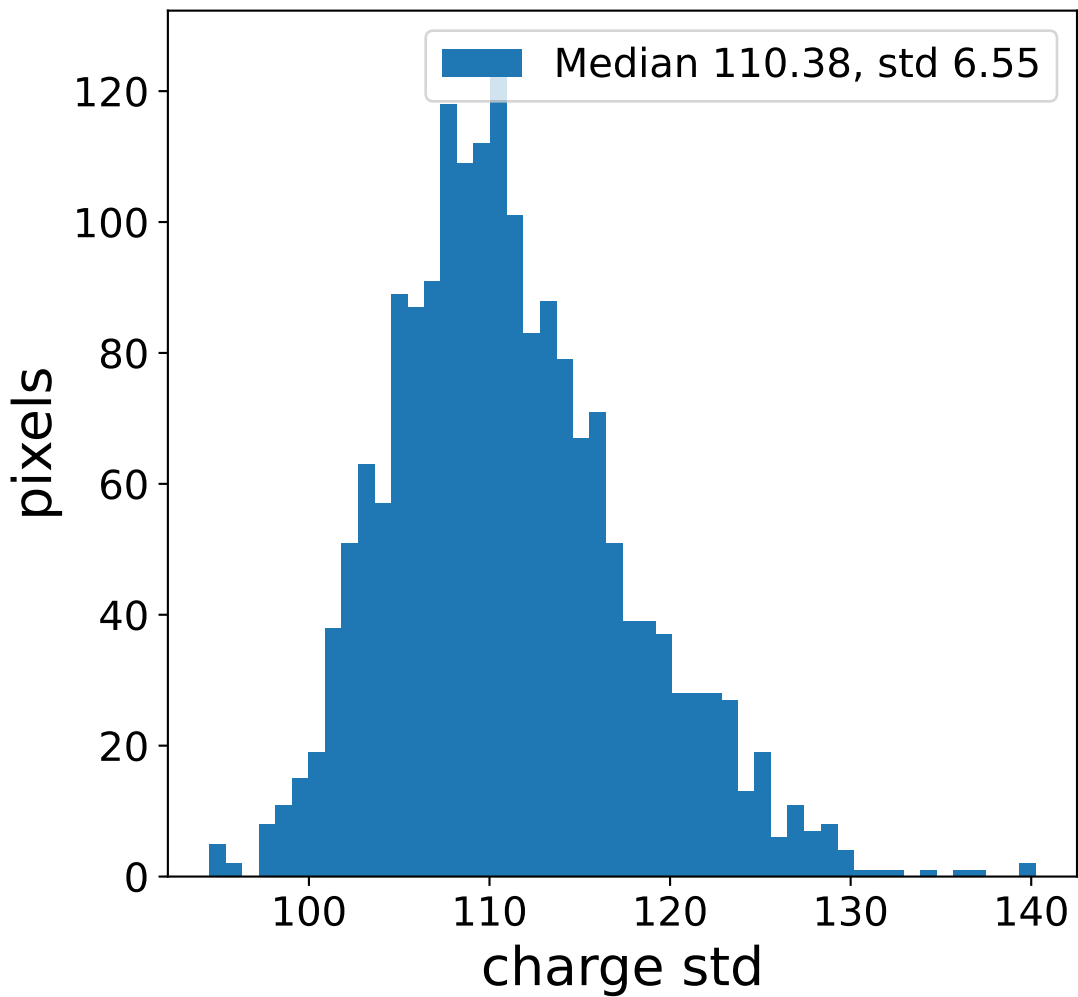
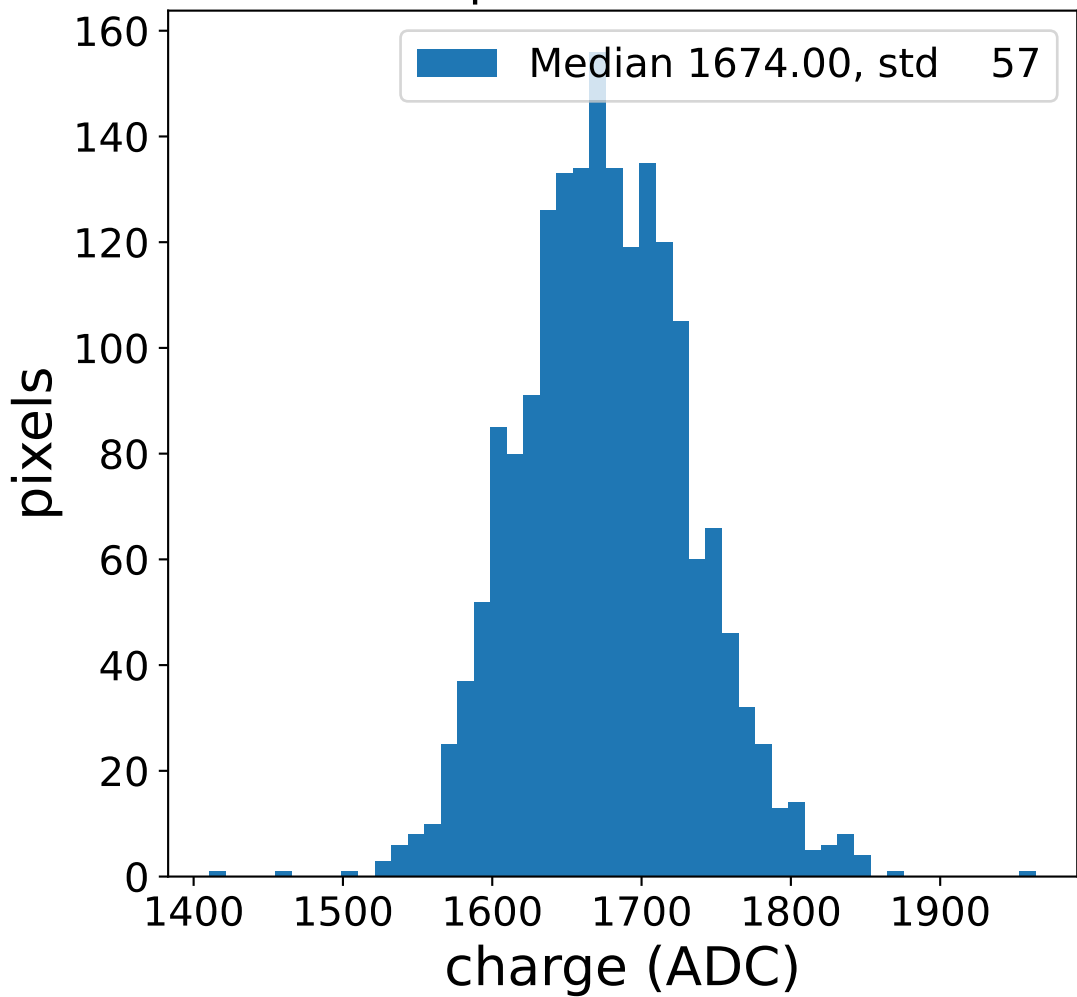


## flat-fielded gain [ADC/pe]

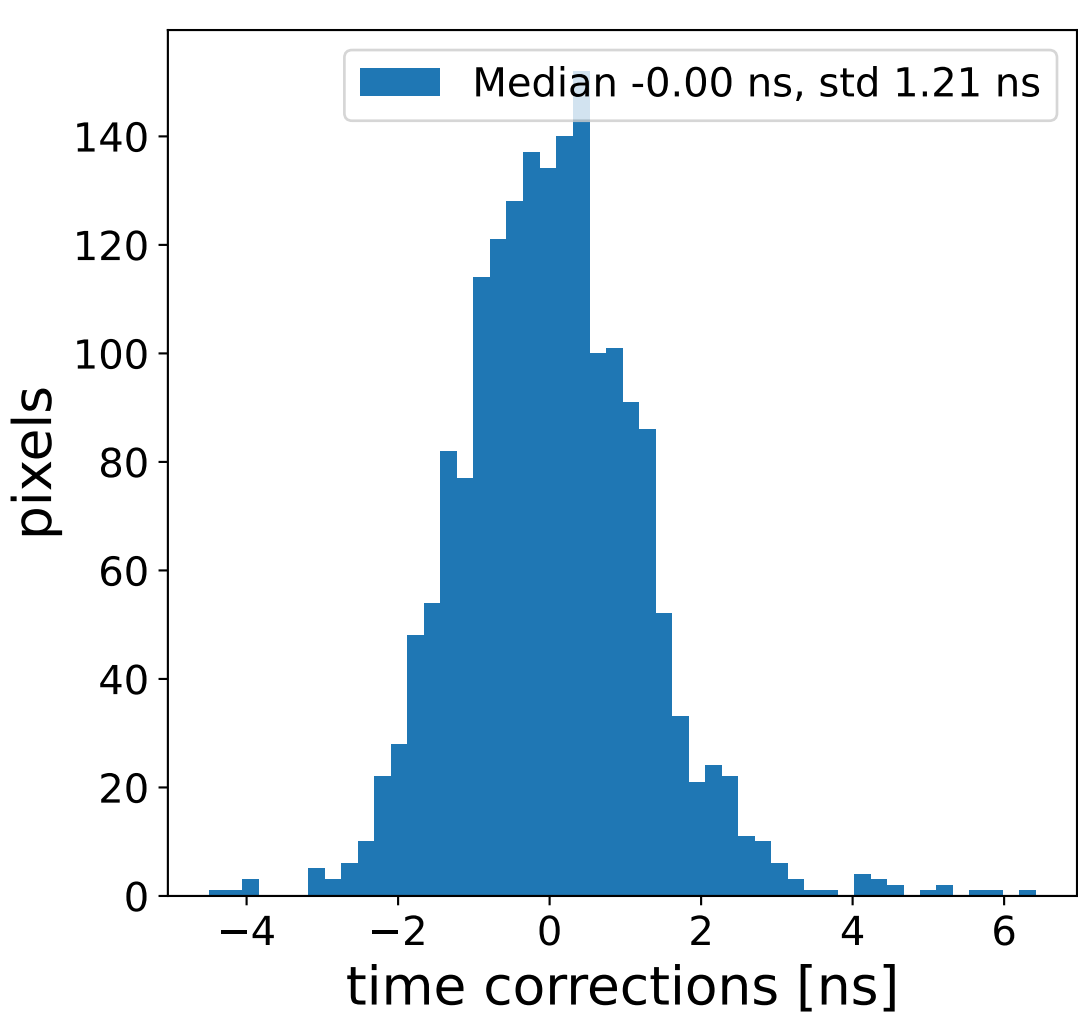
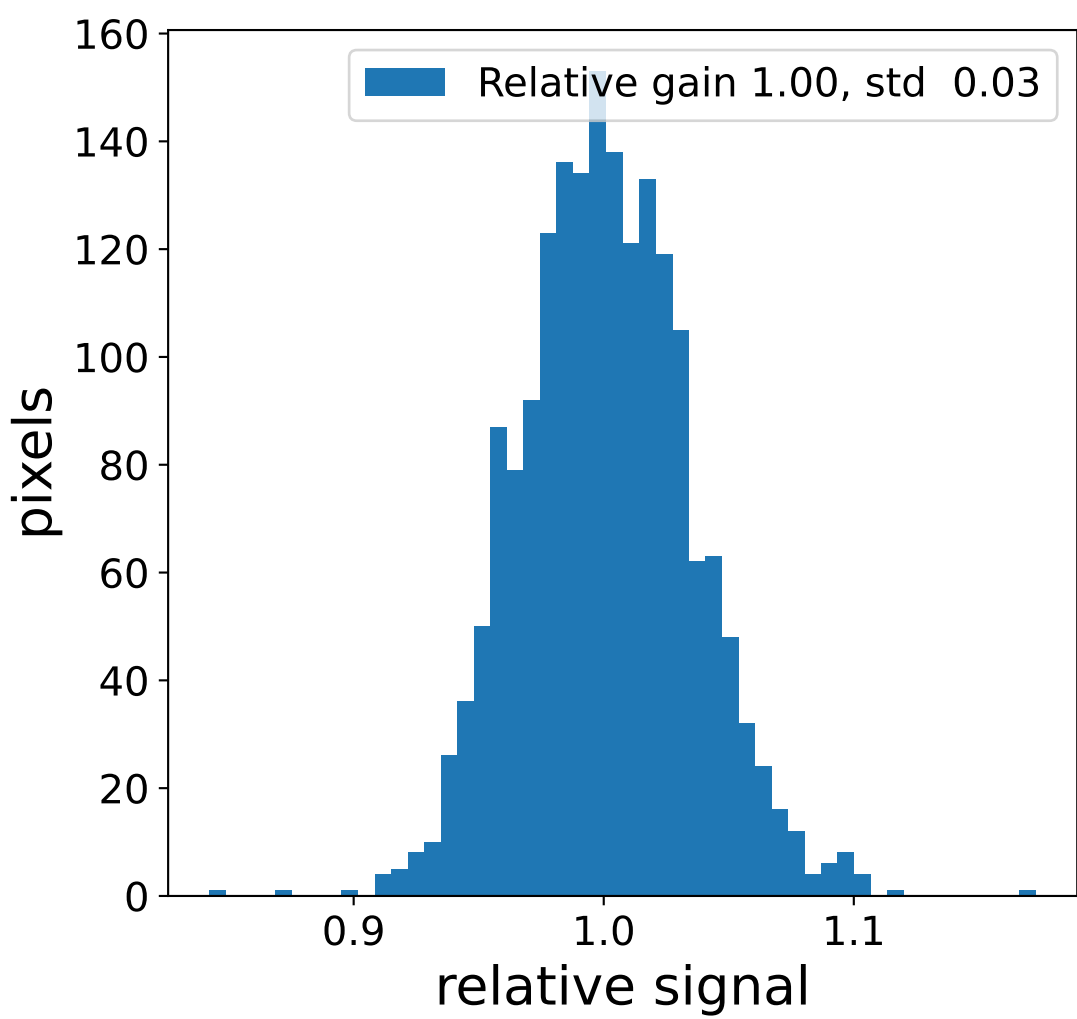
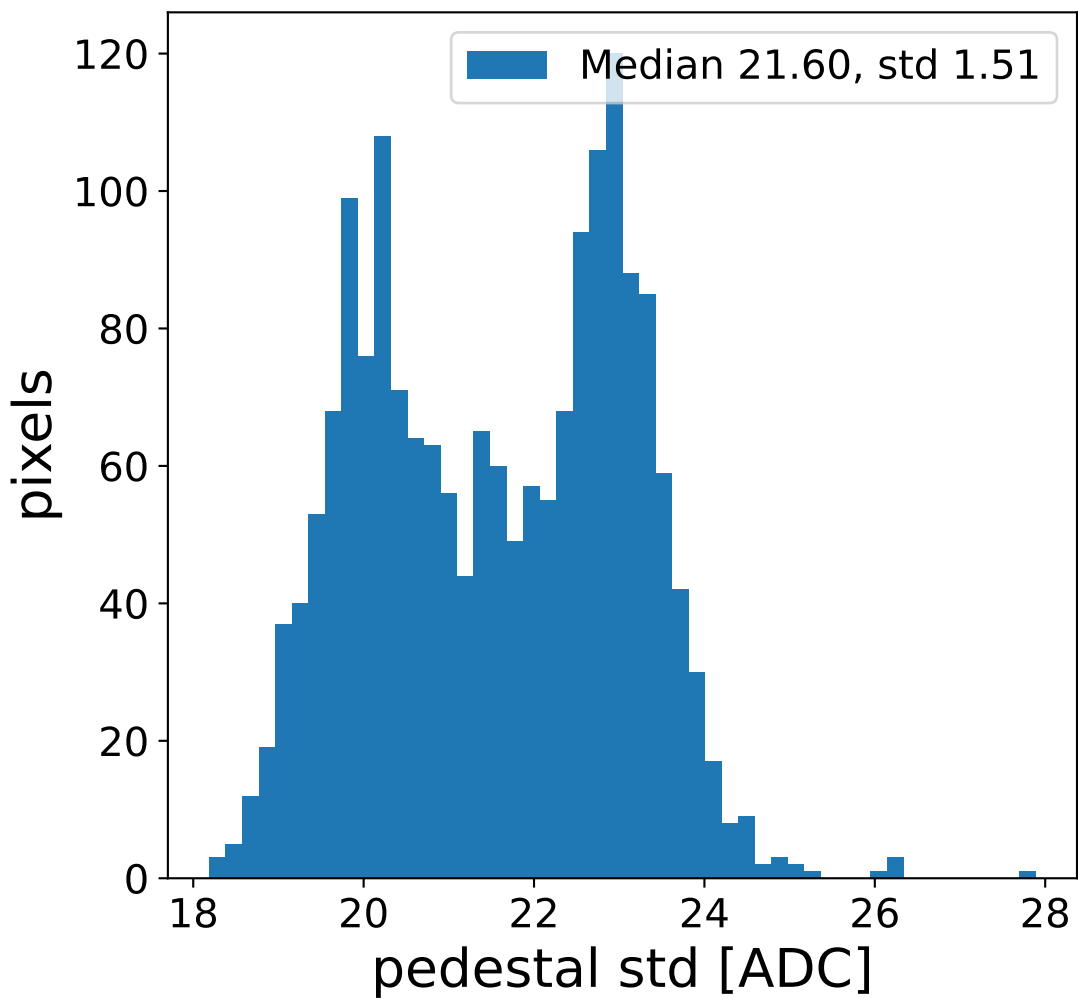
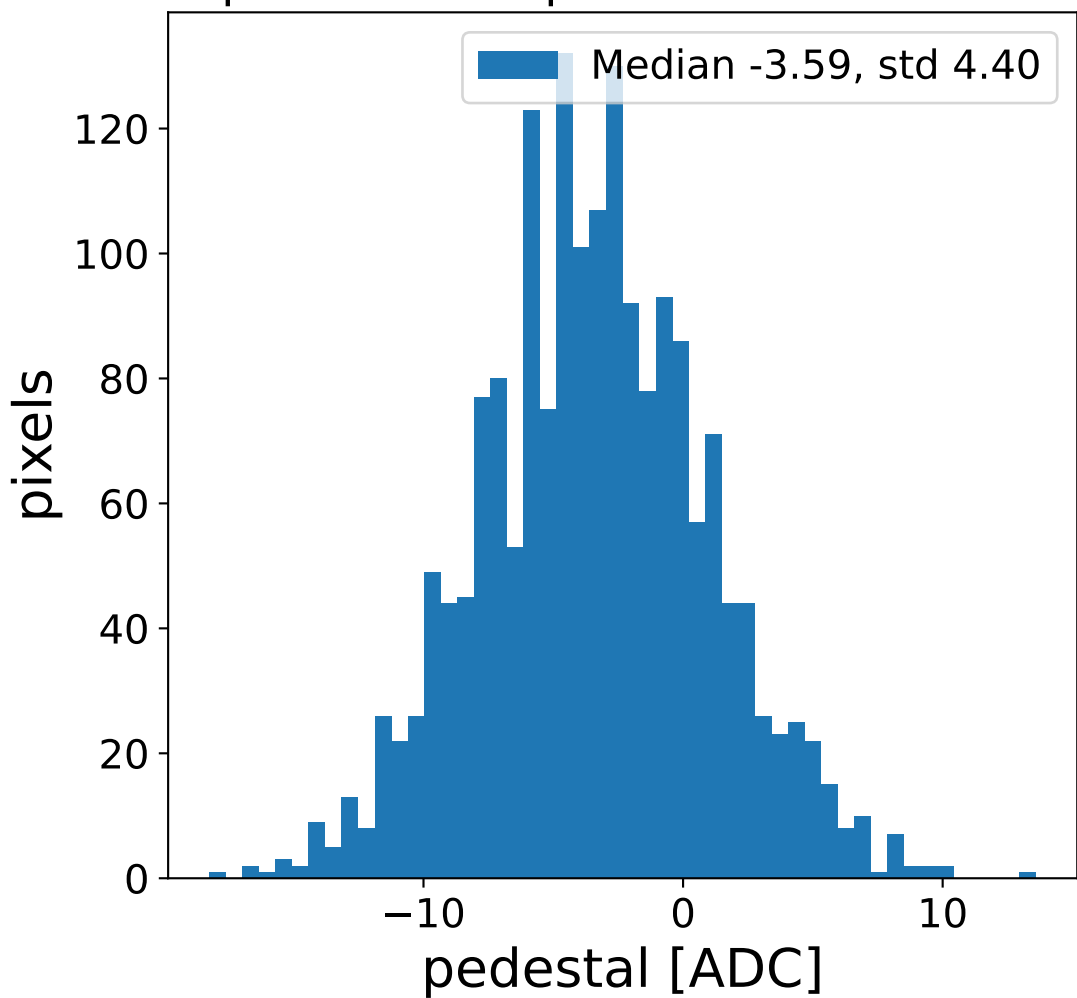


# Run 21005 channel: LG

### FF sample of 10000 events



### pedestal sample of 10000 events



### flat-fielded gain [ADC/pe]

