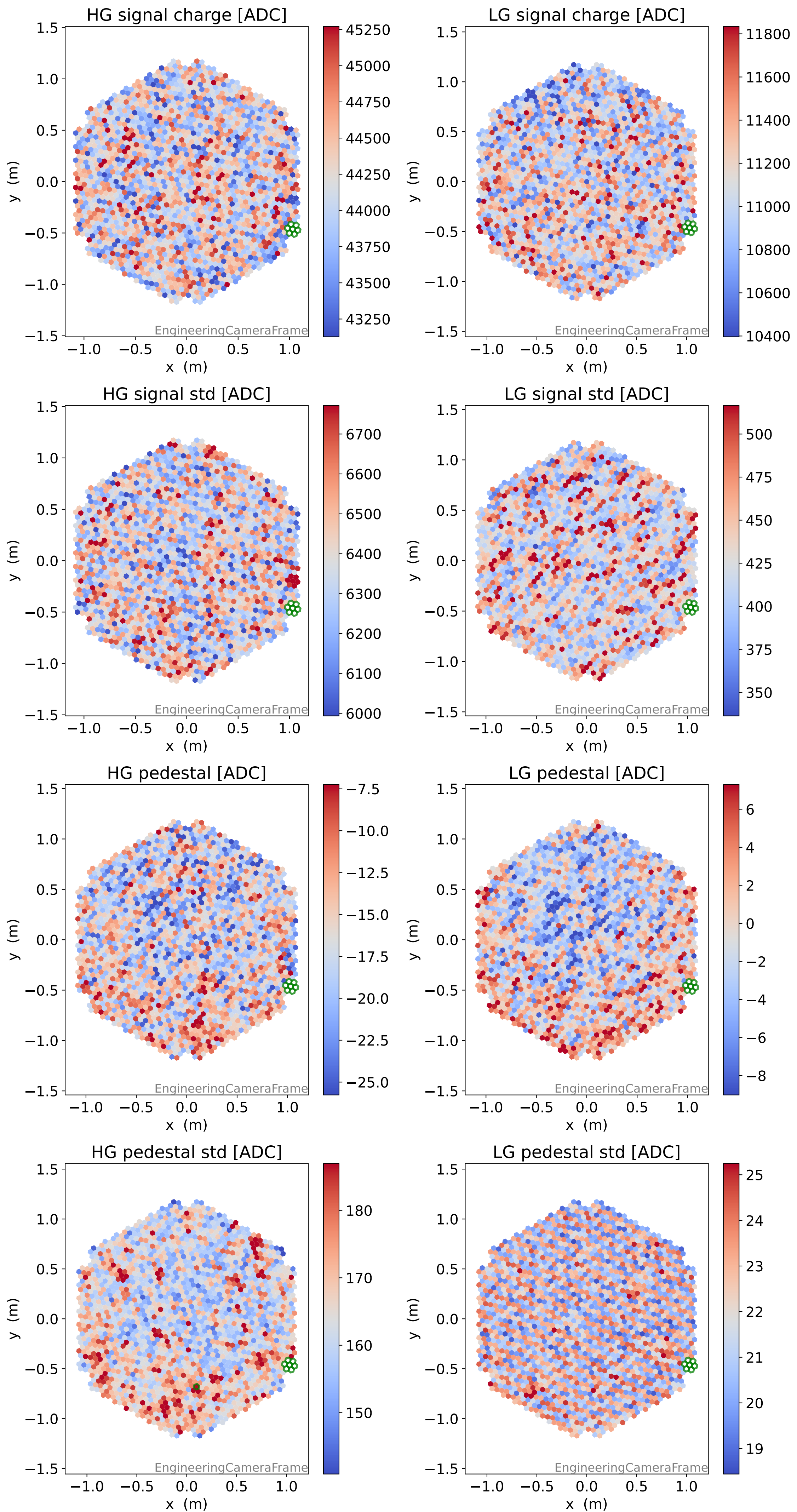
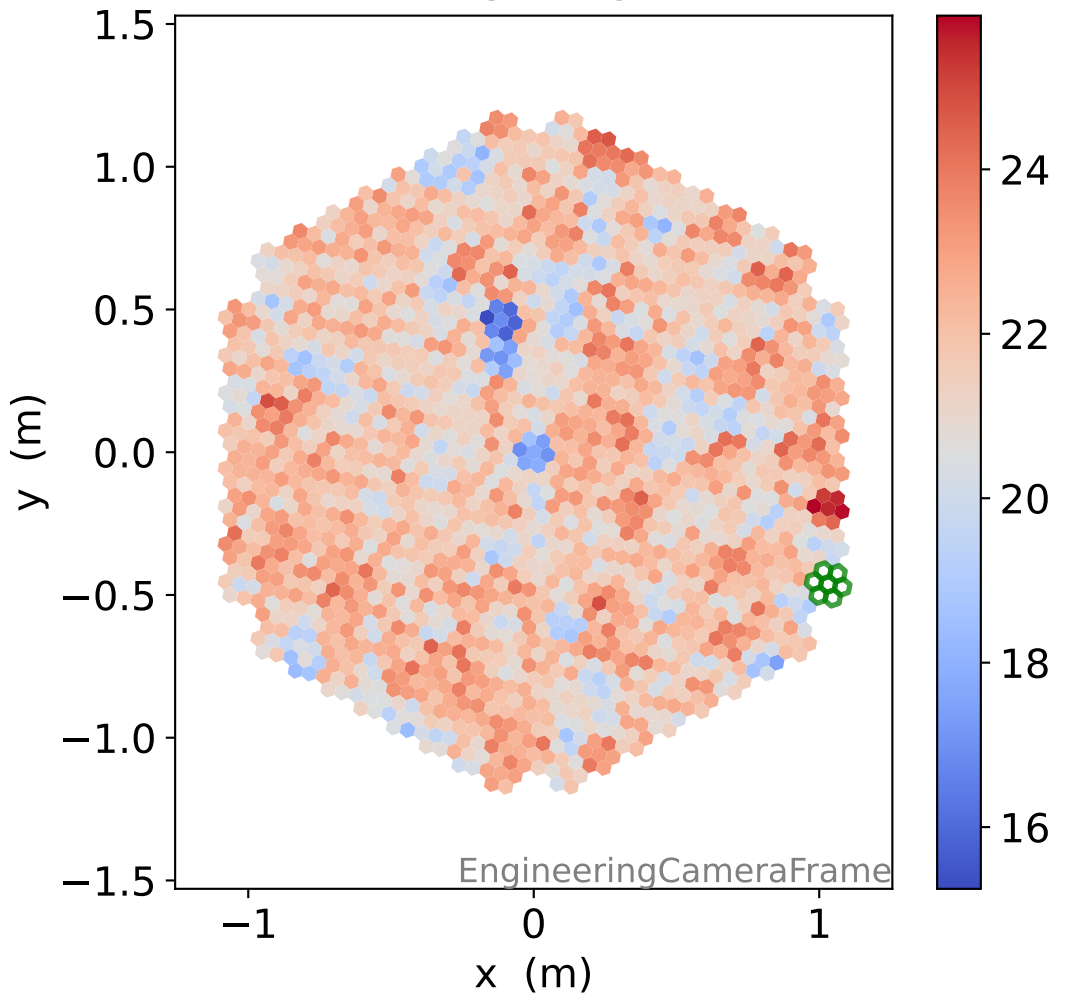


# Run 20995, Cat-A calibration

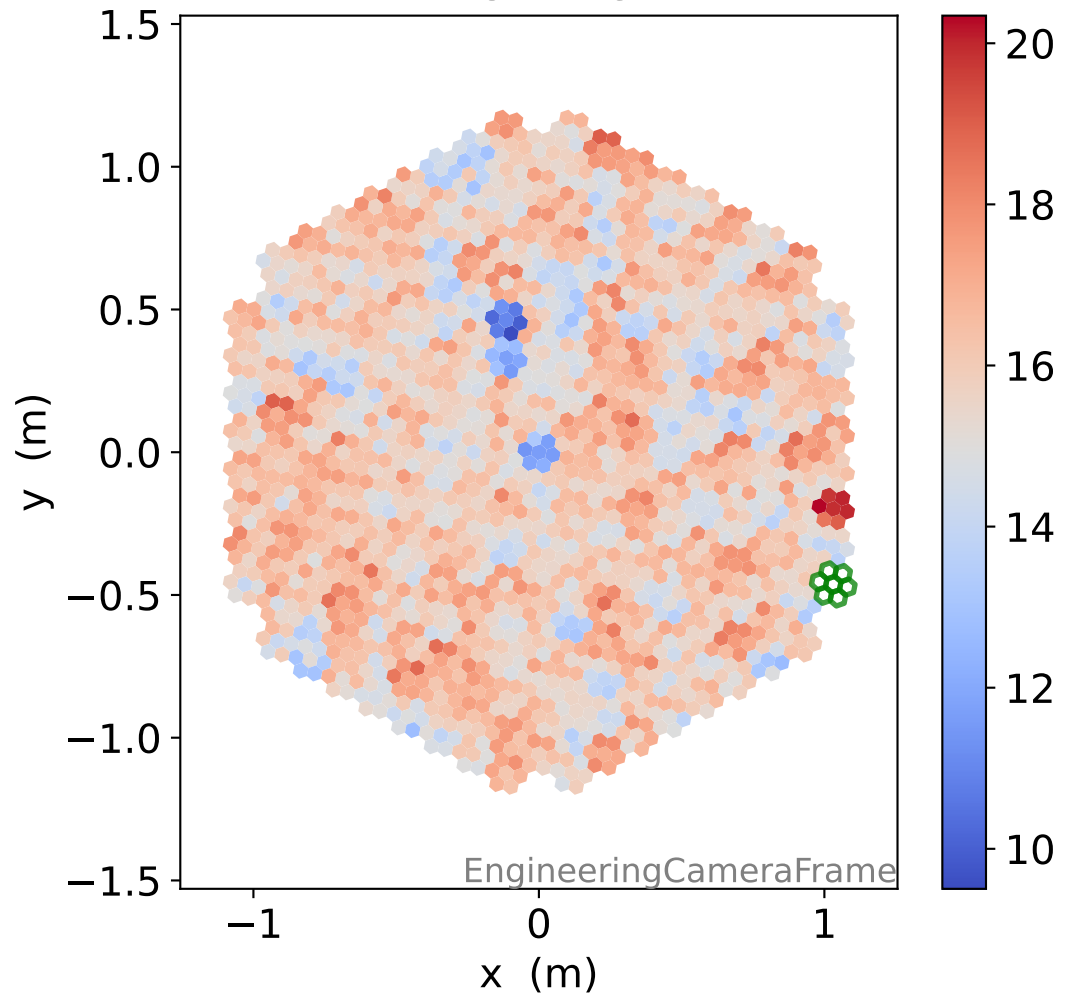


# Run 20995

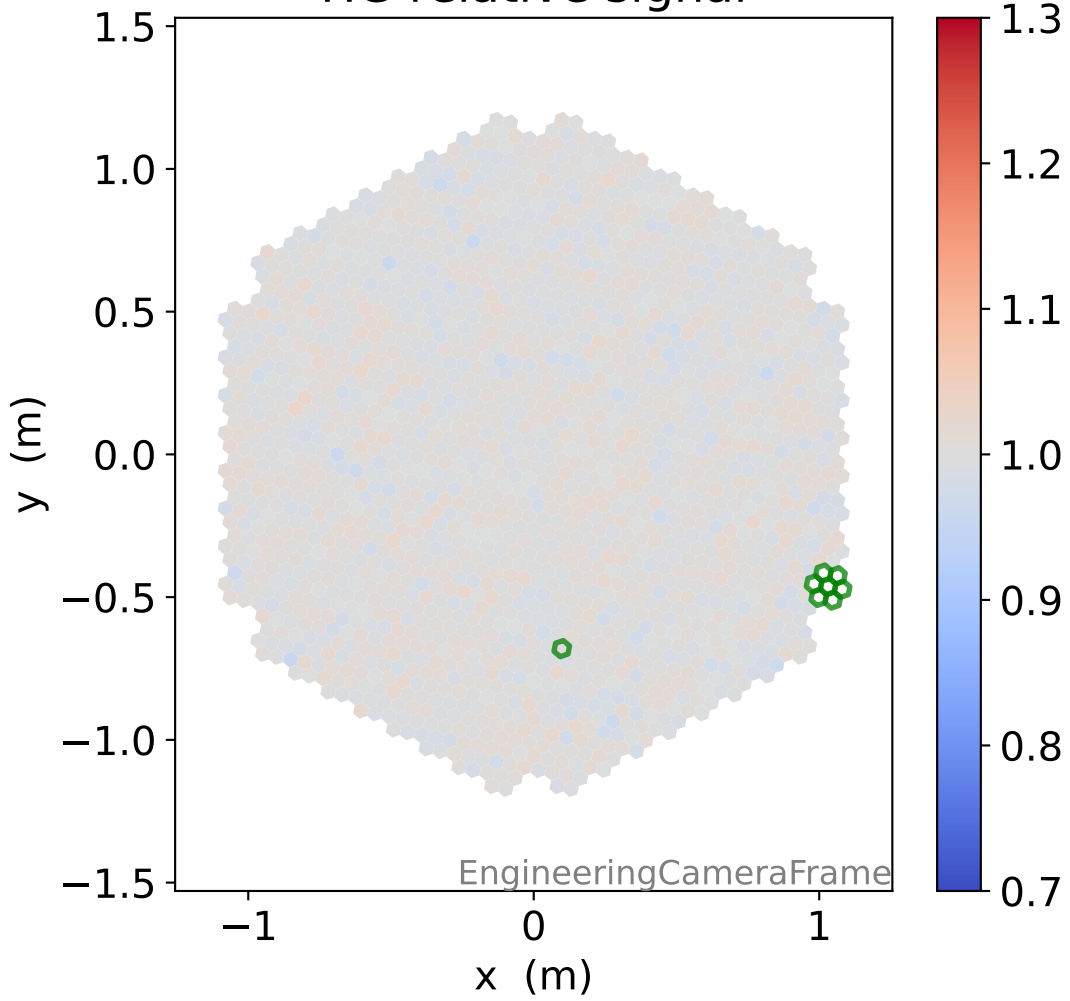
### HG time



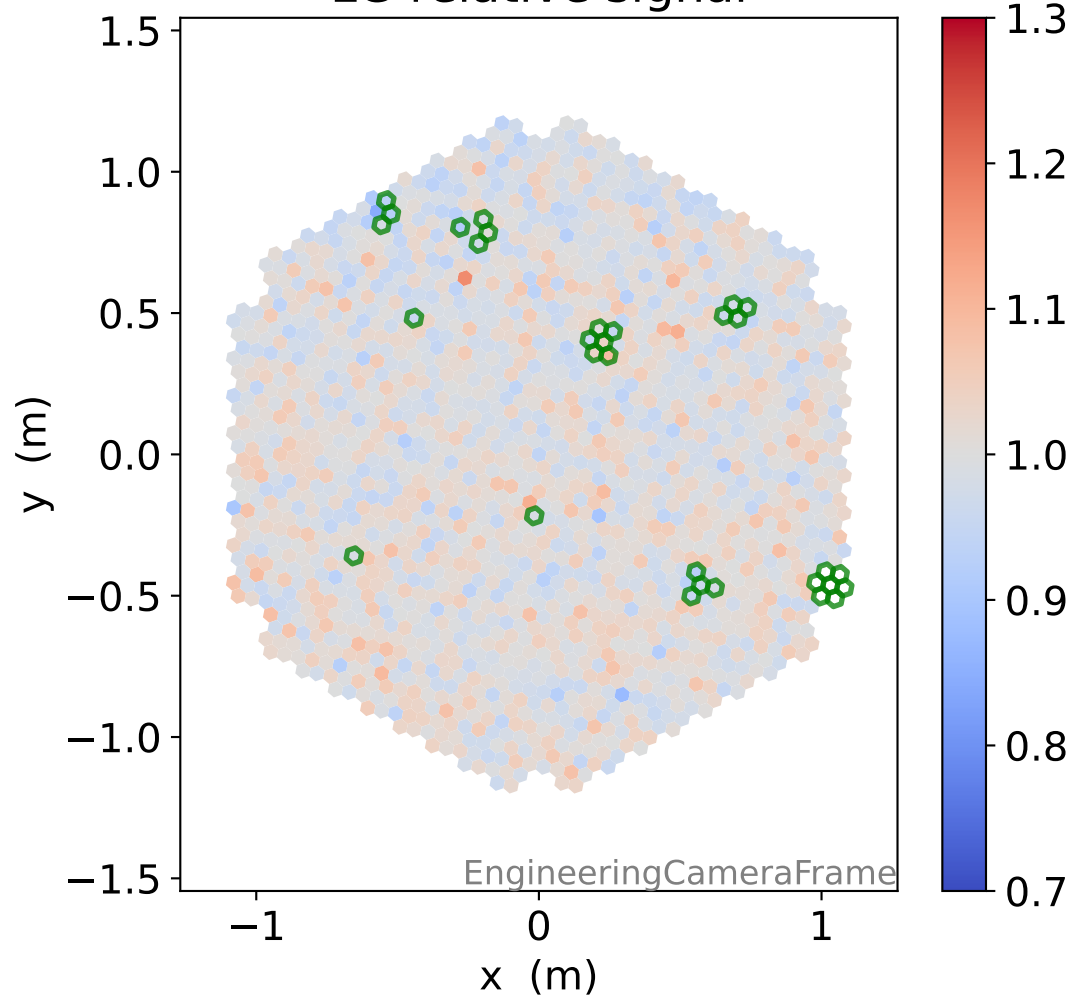
### LG time



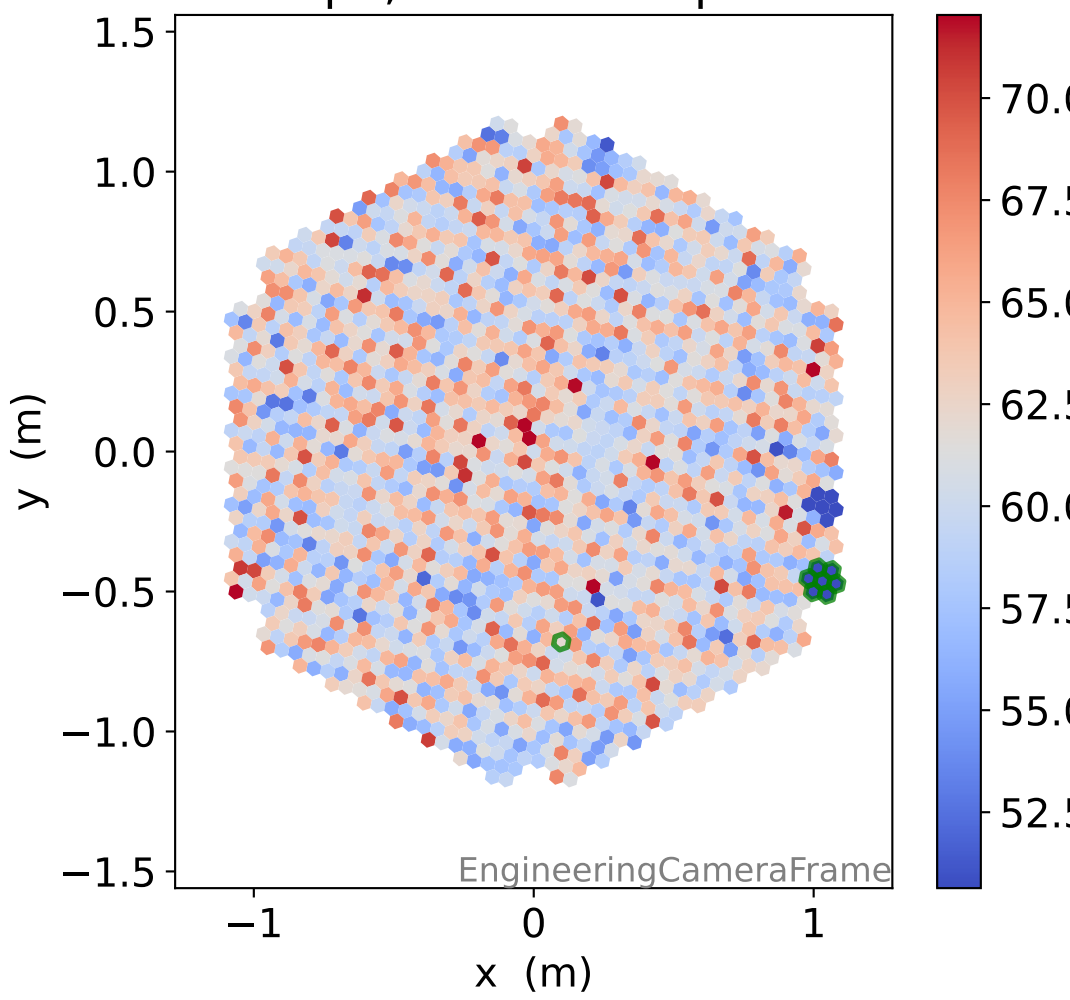
### HG relative signal



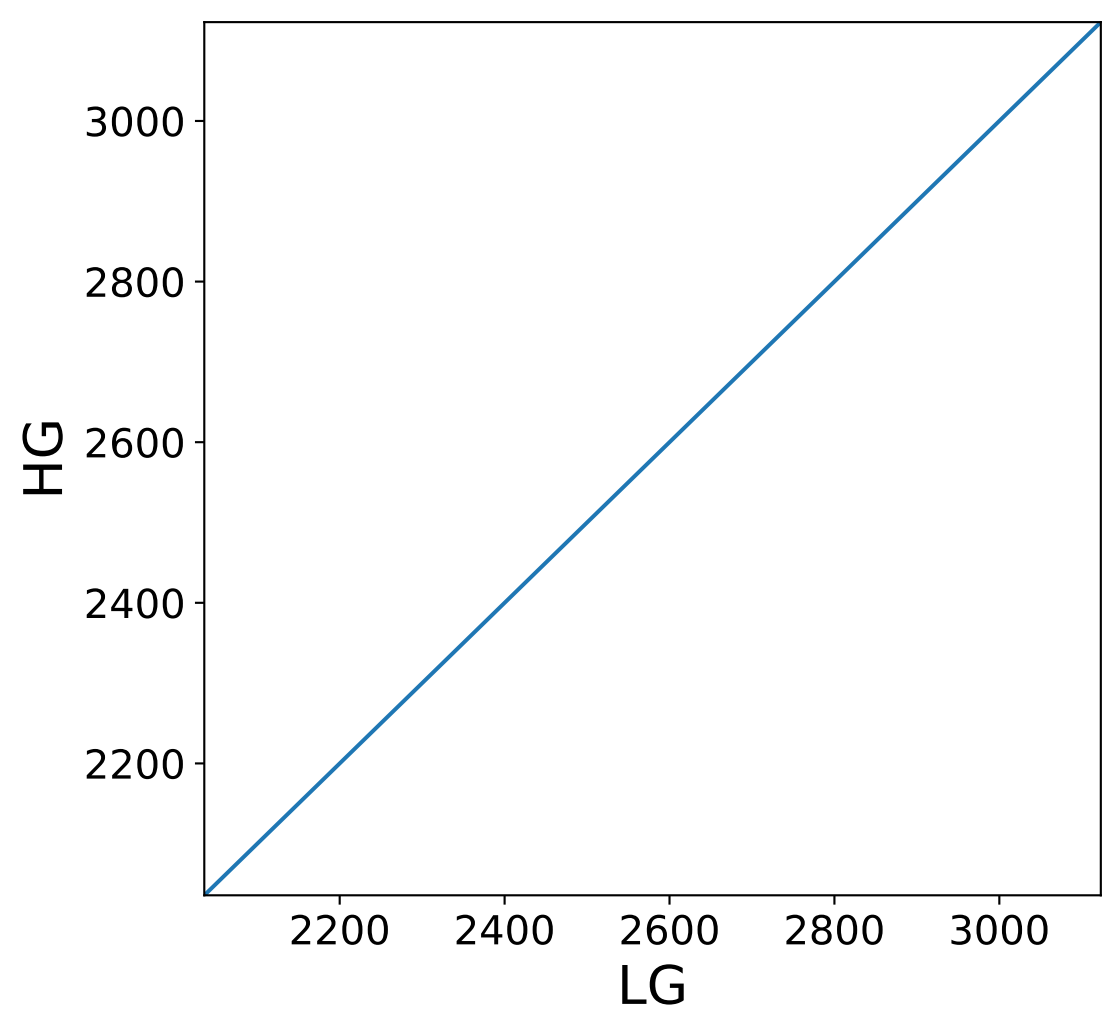
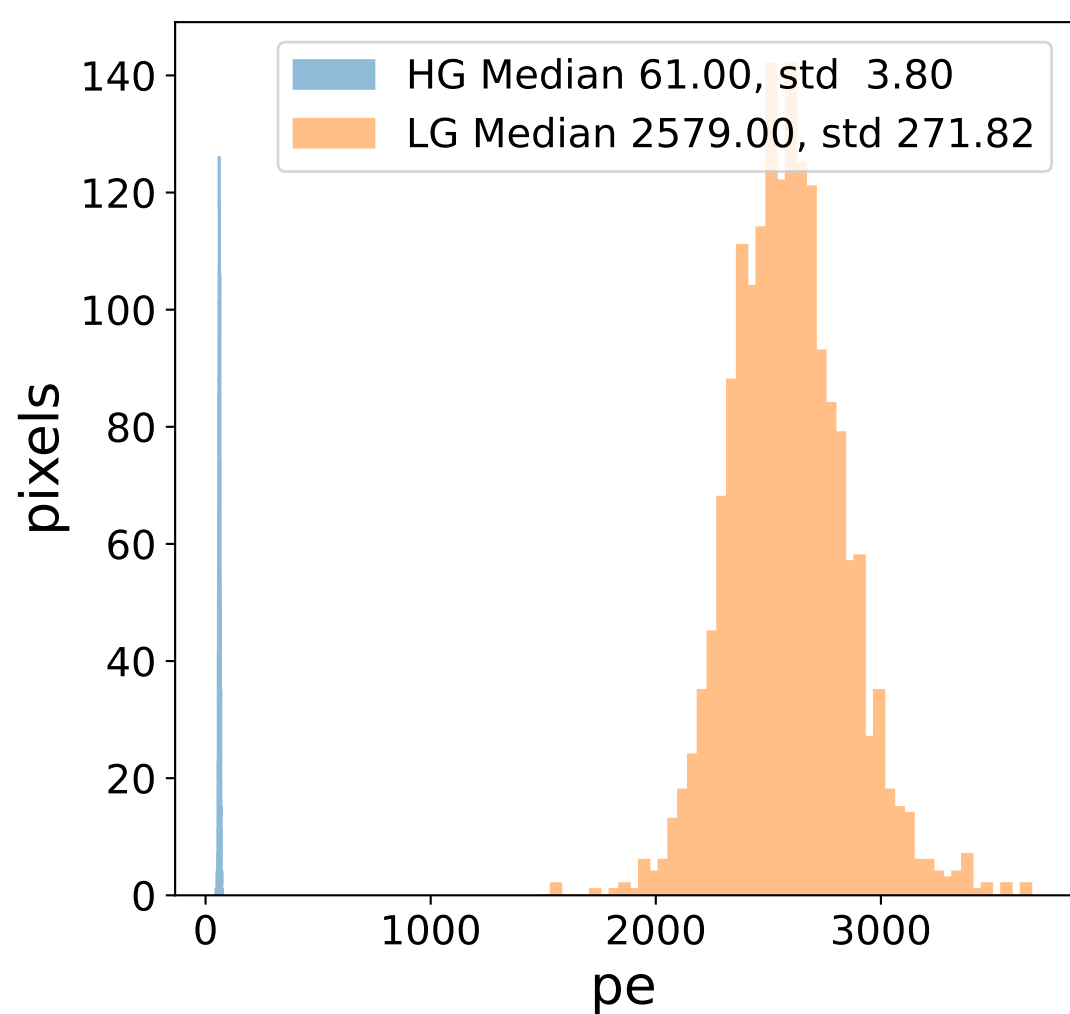
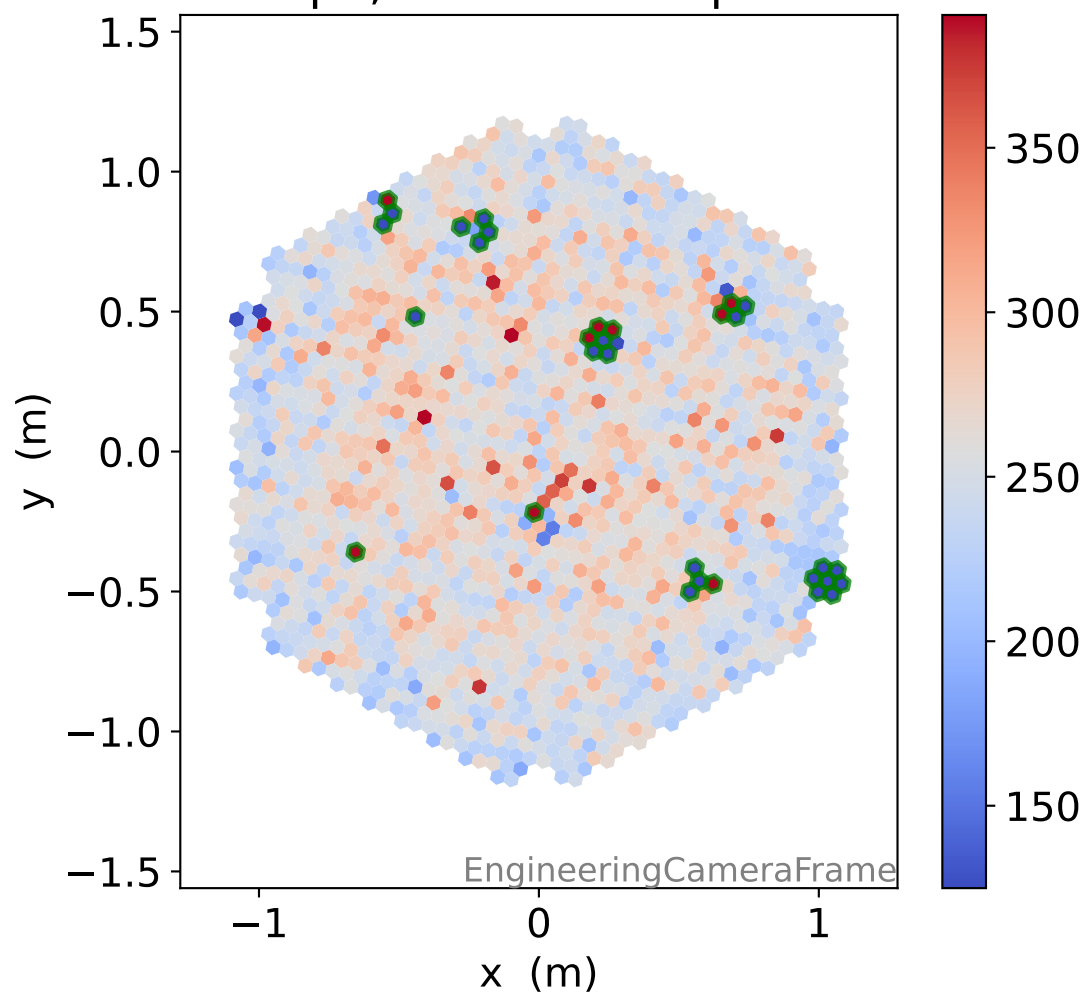
### LG relative signal



### HG pe, 8 unusable pixels

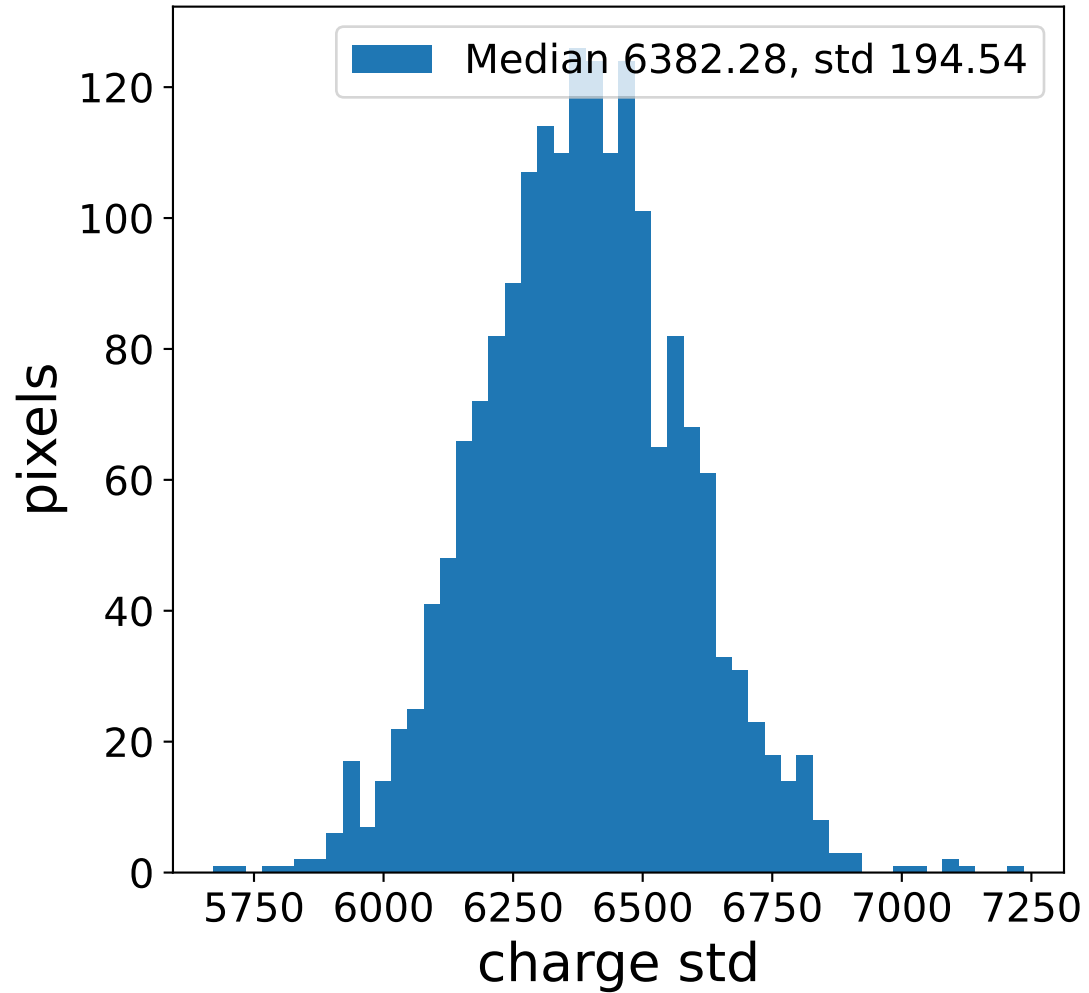
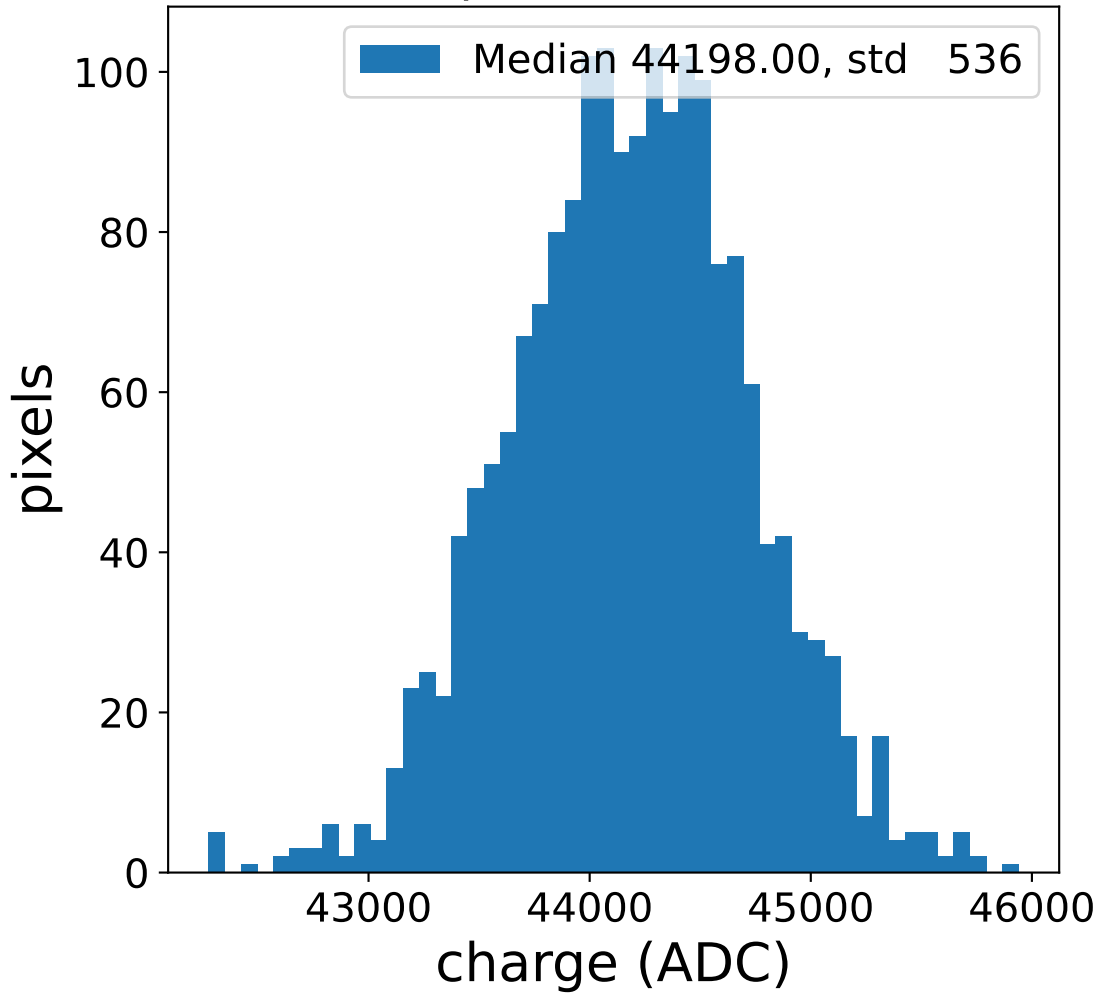


### LG pe, 31 unusable pixels

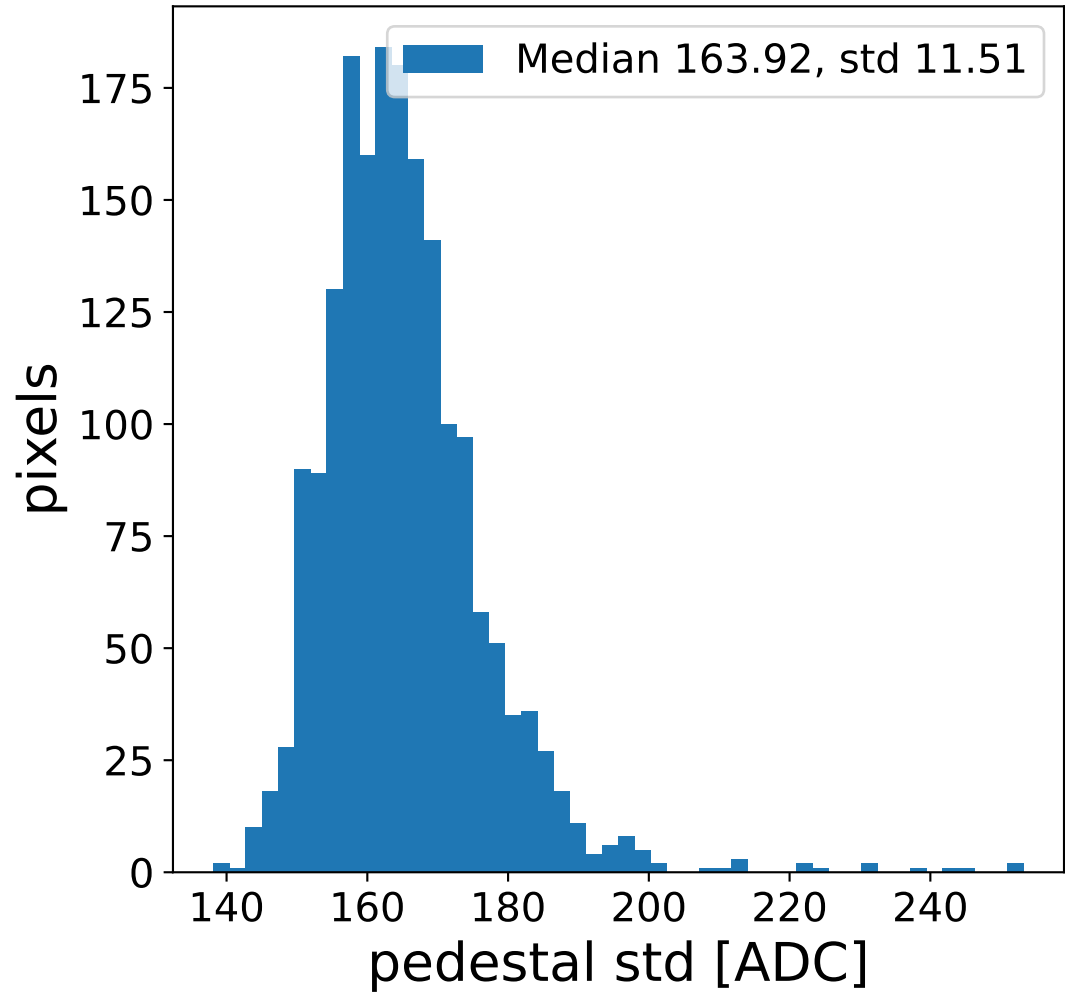
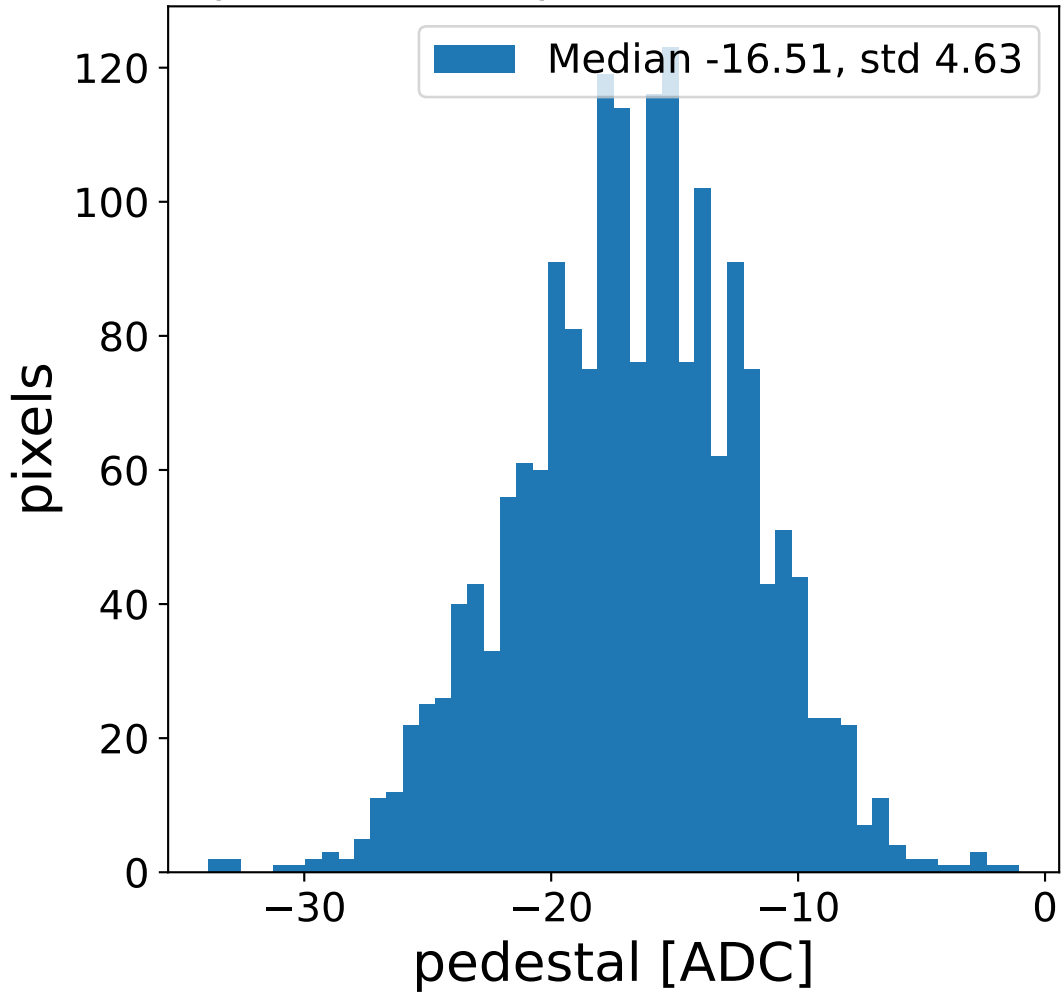


# Run 20995 channel: HG

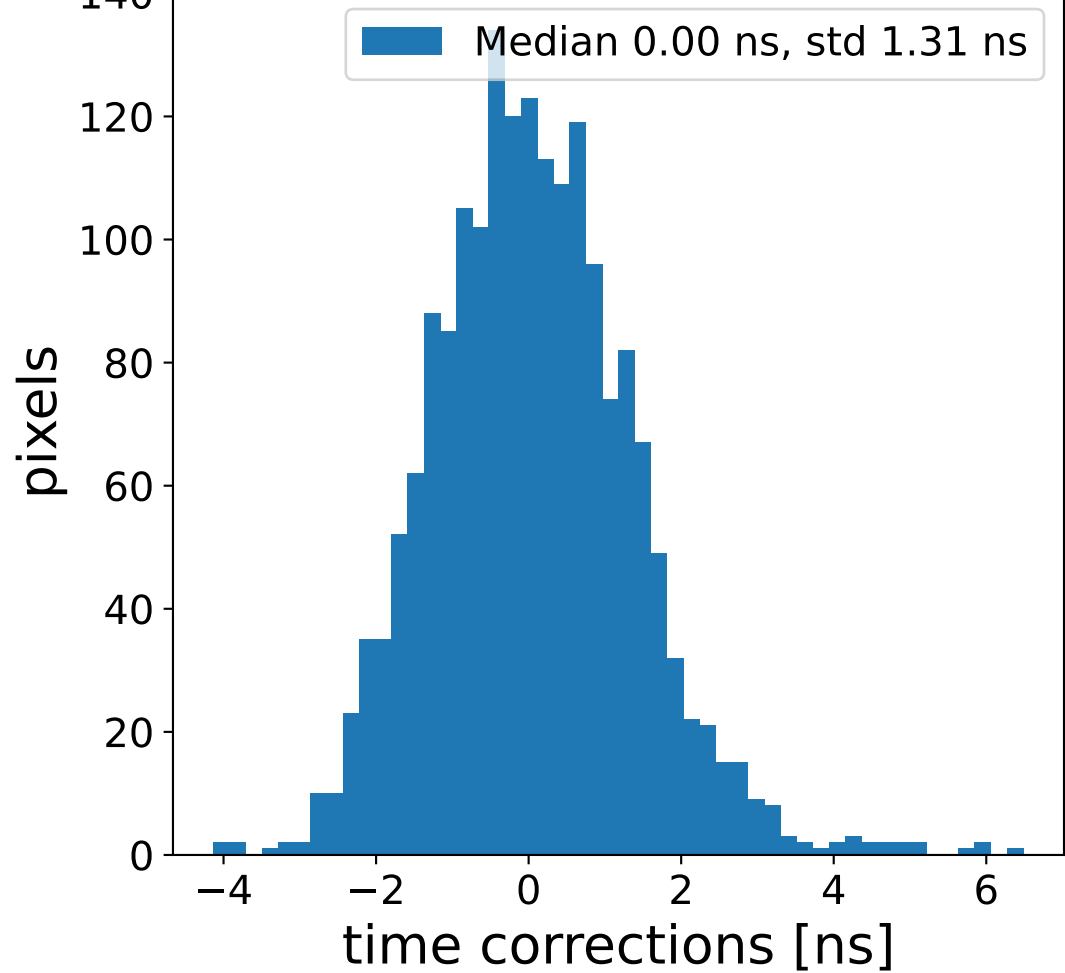
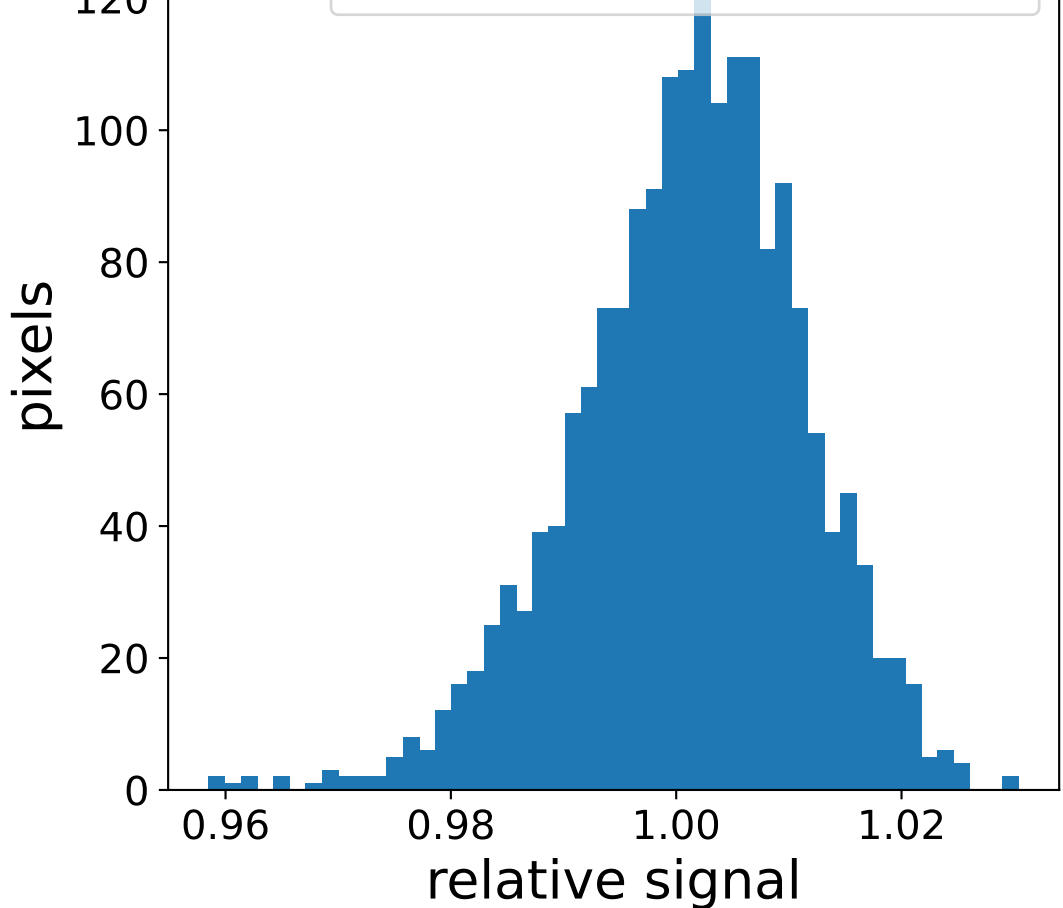
### FF sample of 10000 events



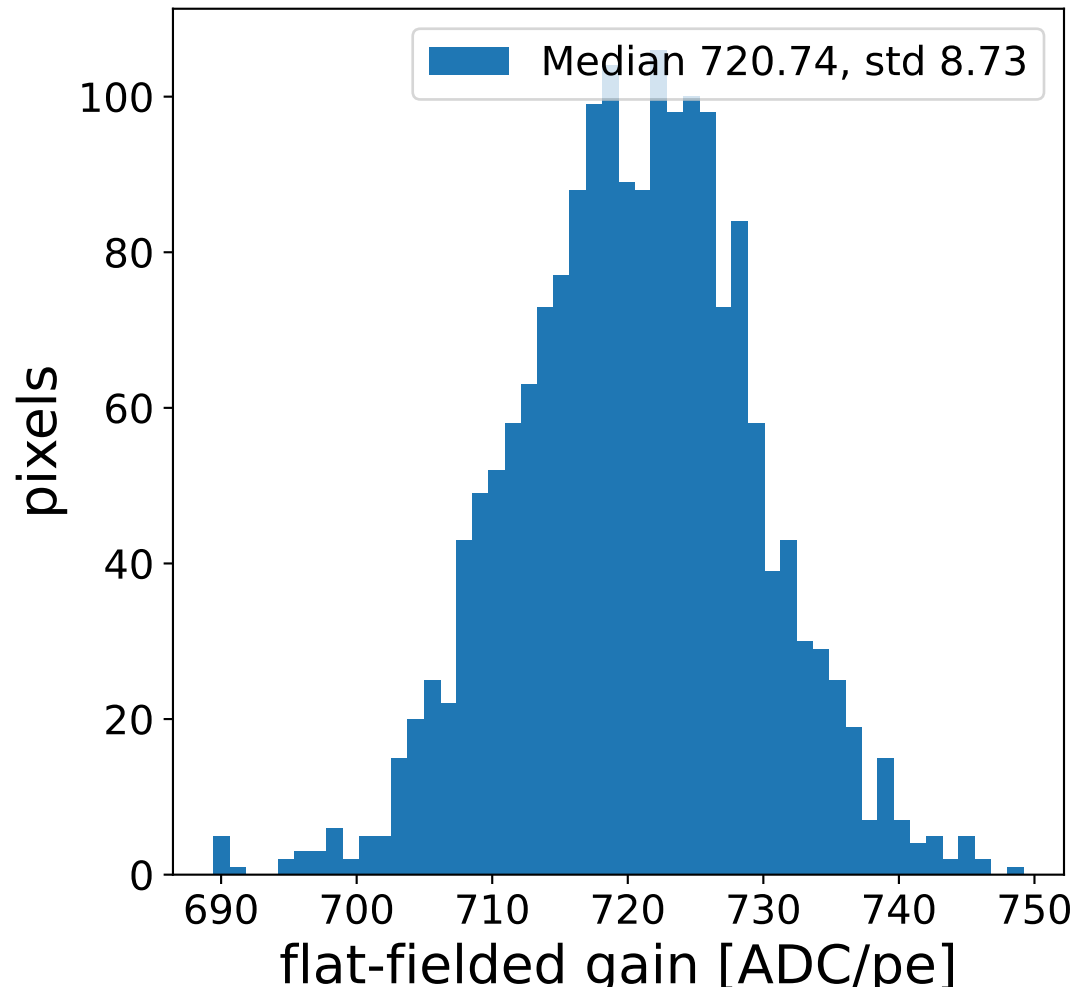
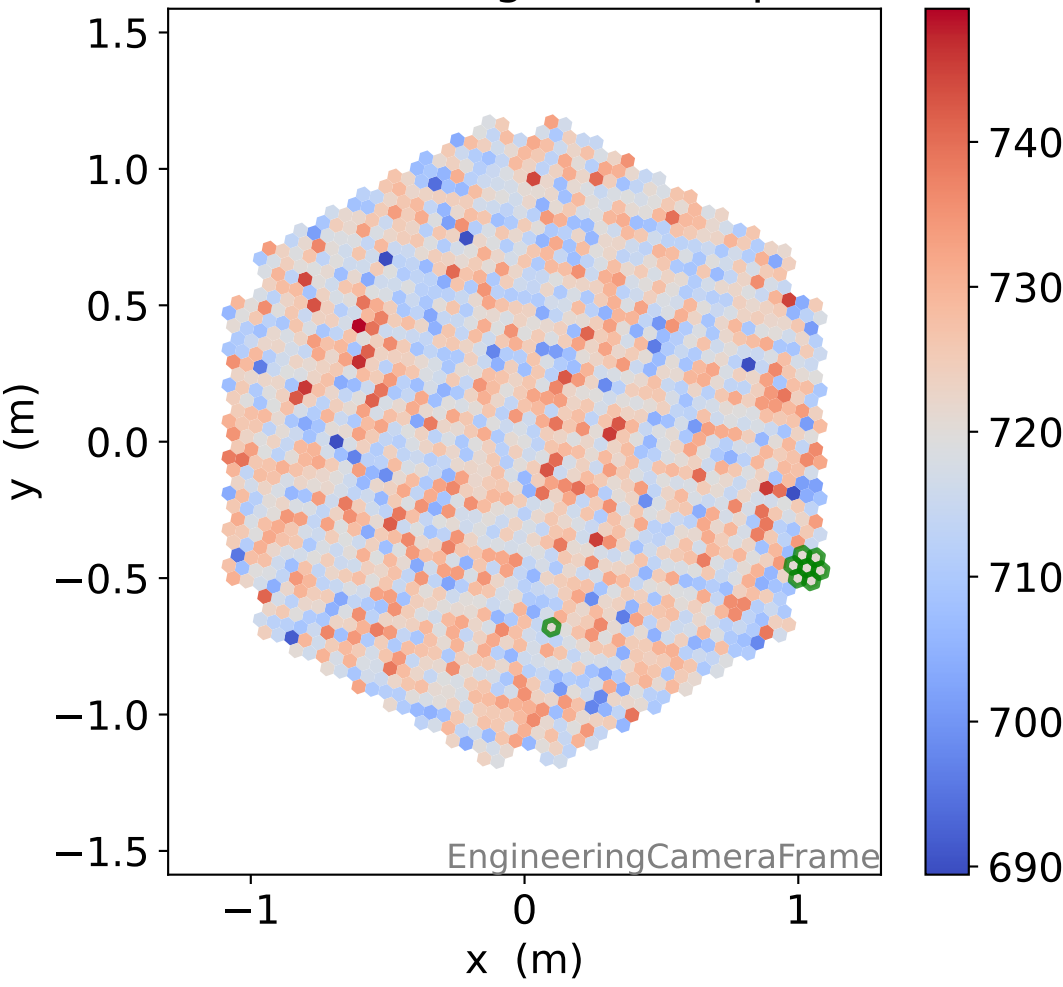
### pedestal sample of 10000 events



### Relative gain 1.00, std 0.01

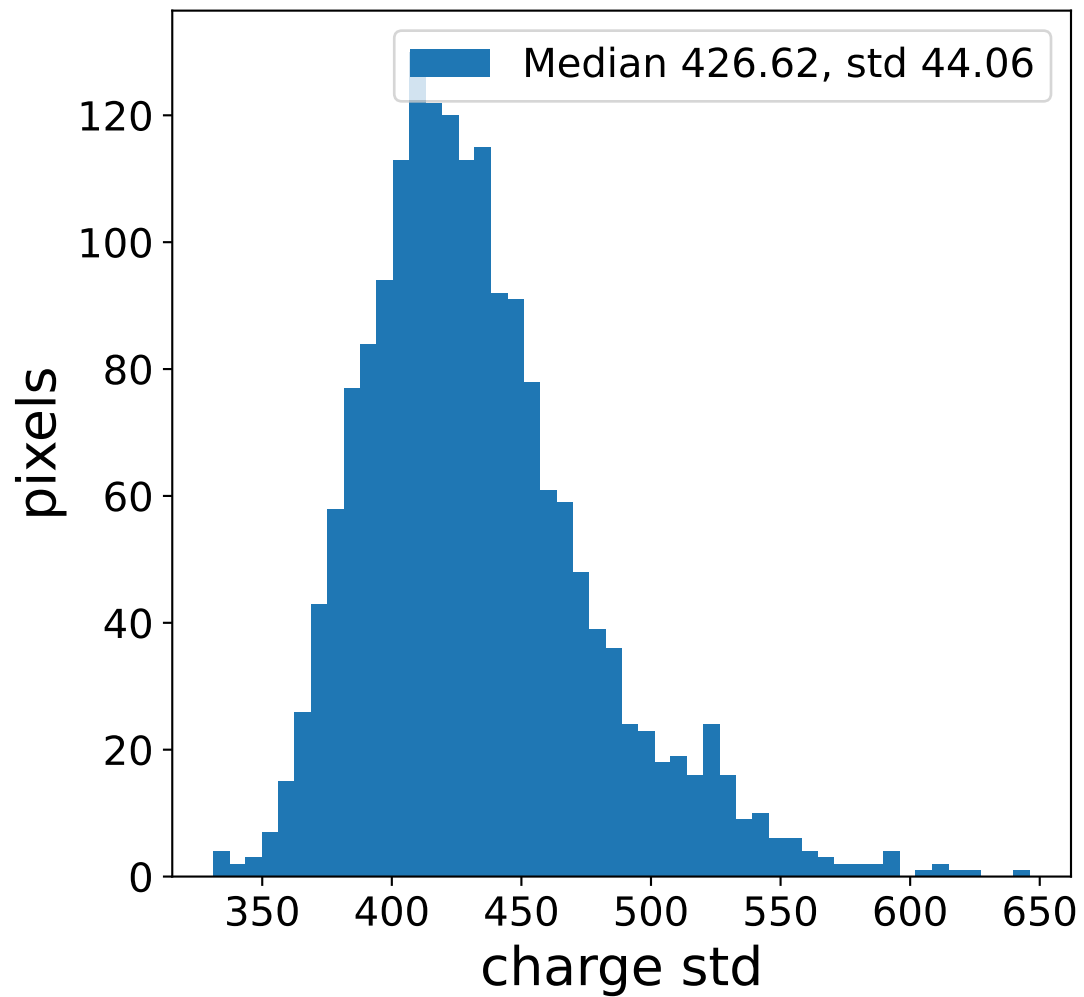
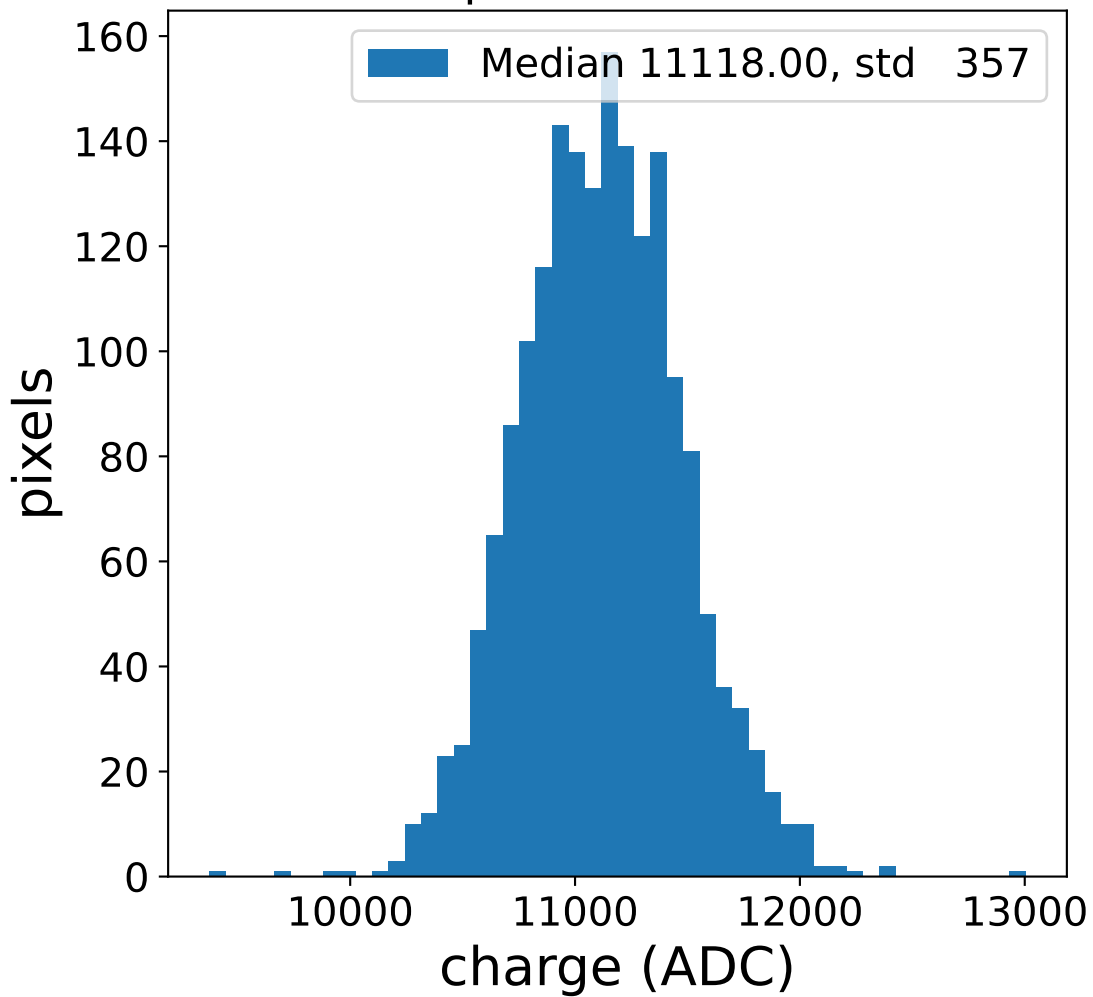


### flat-fielded gain [ADC/pe]

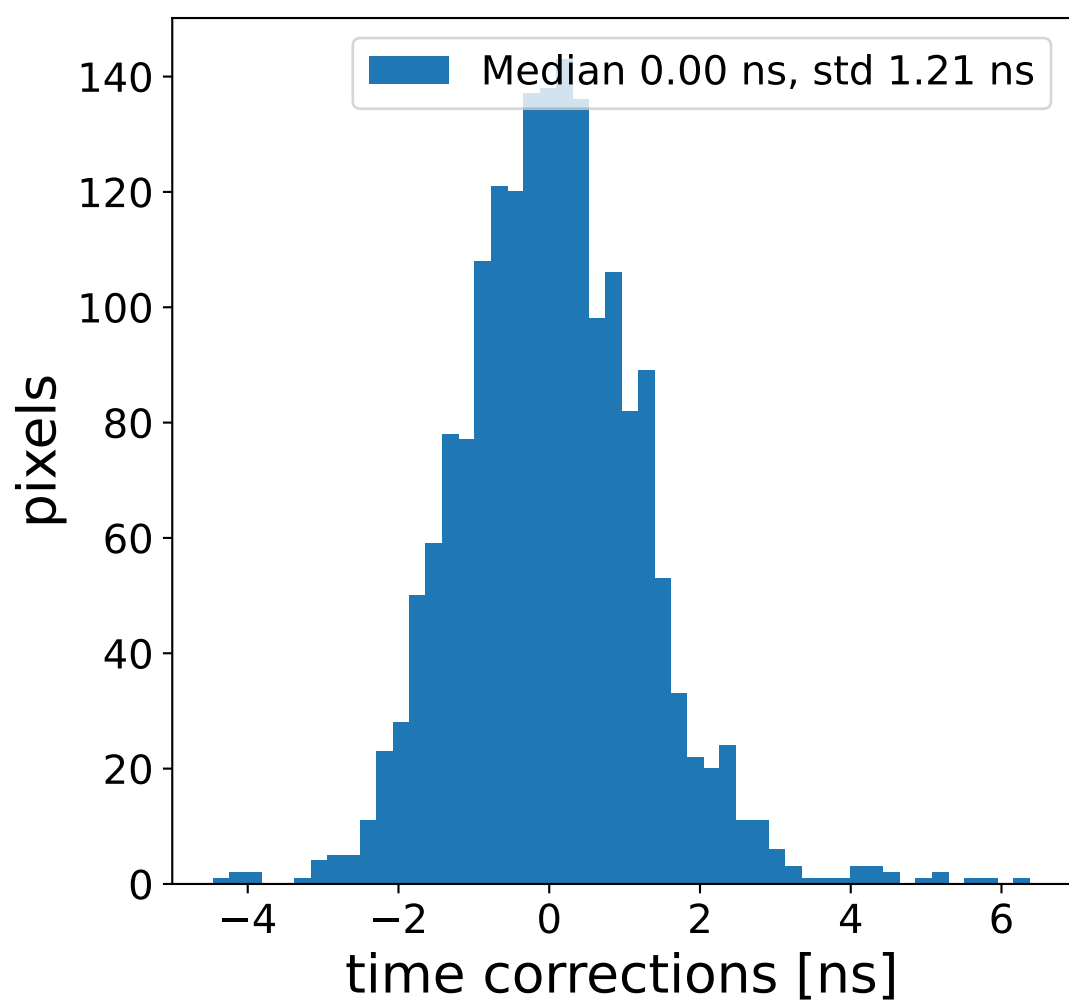
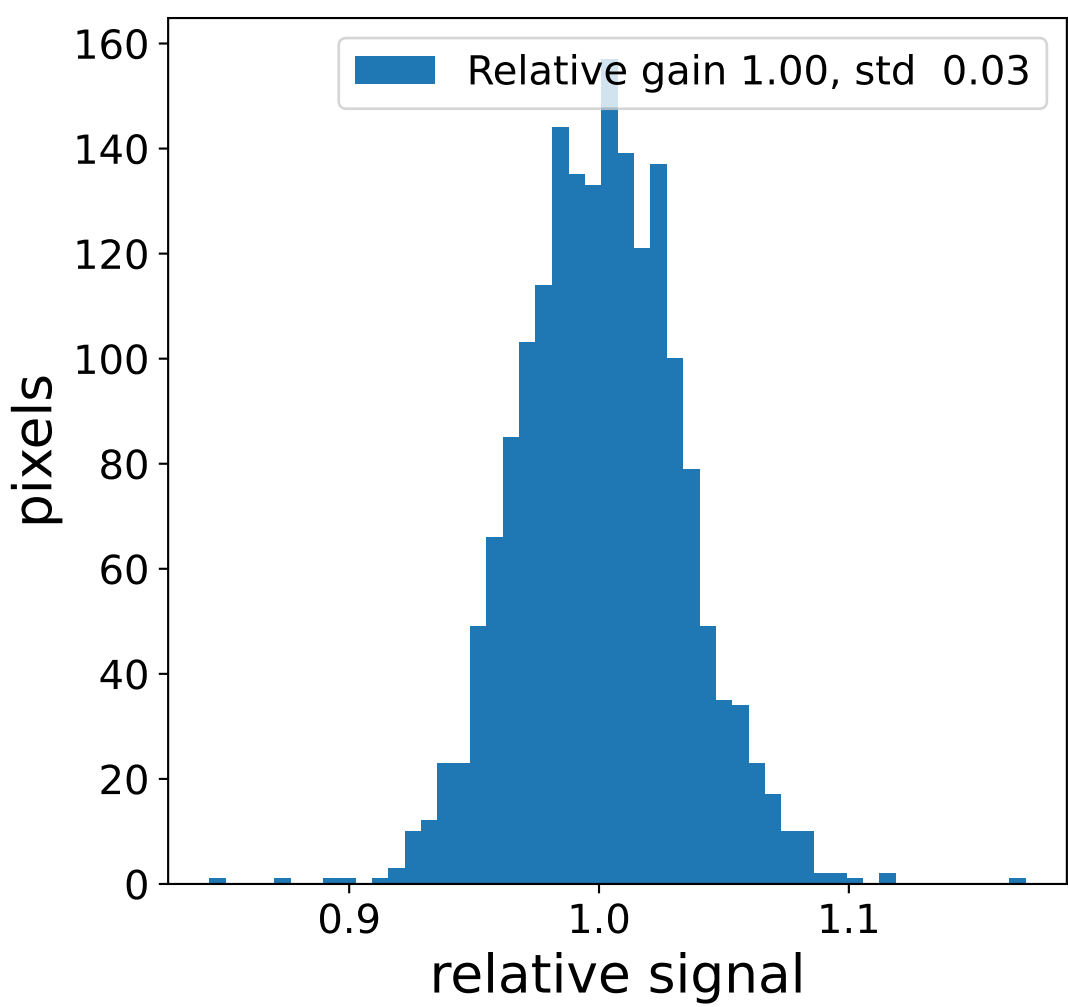
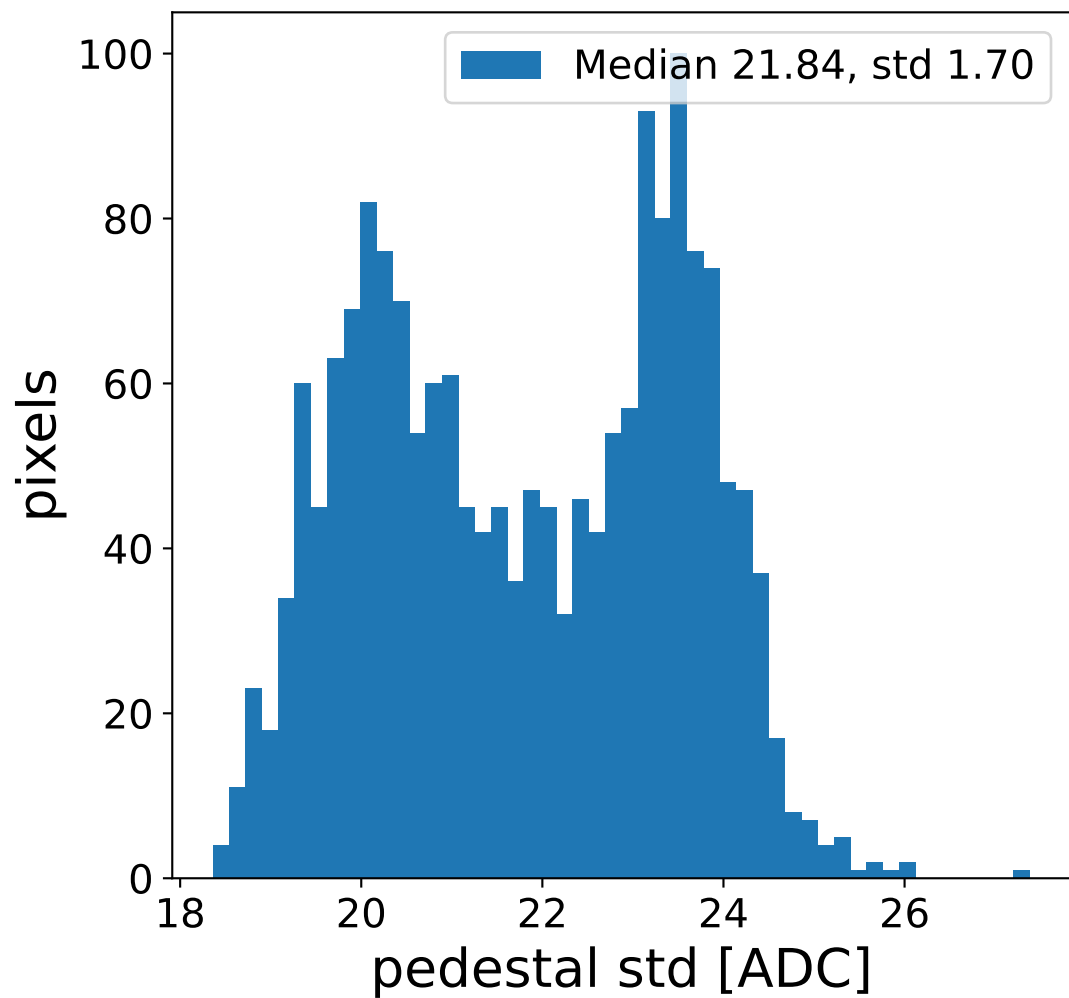
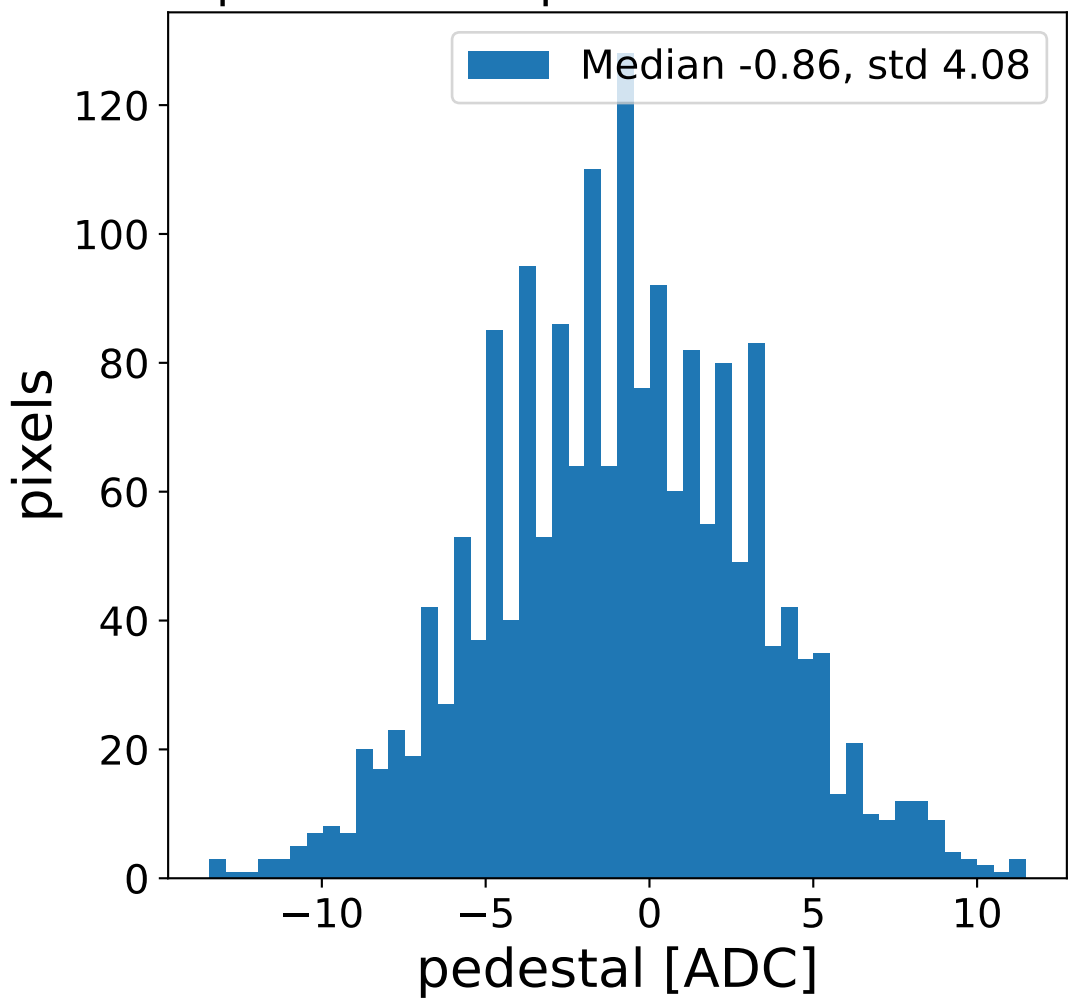


# Run 20995 channel: LG

### FF sample of 10000 events



### pedestal sample of 10000 events



### flat-fielded gain [ADC/pe]

