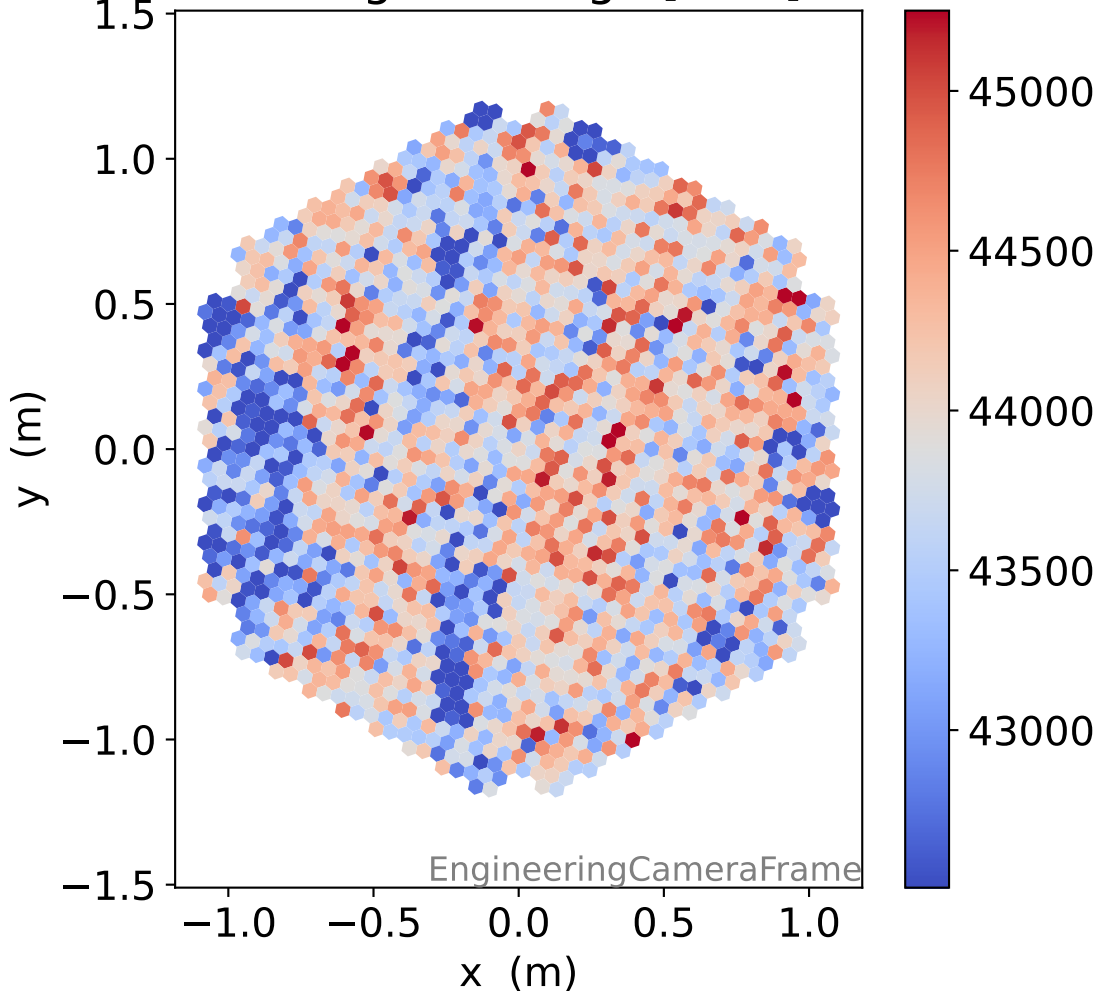
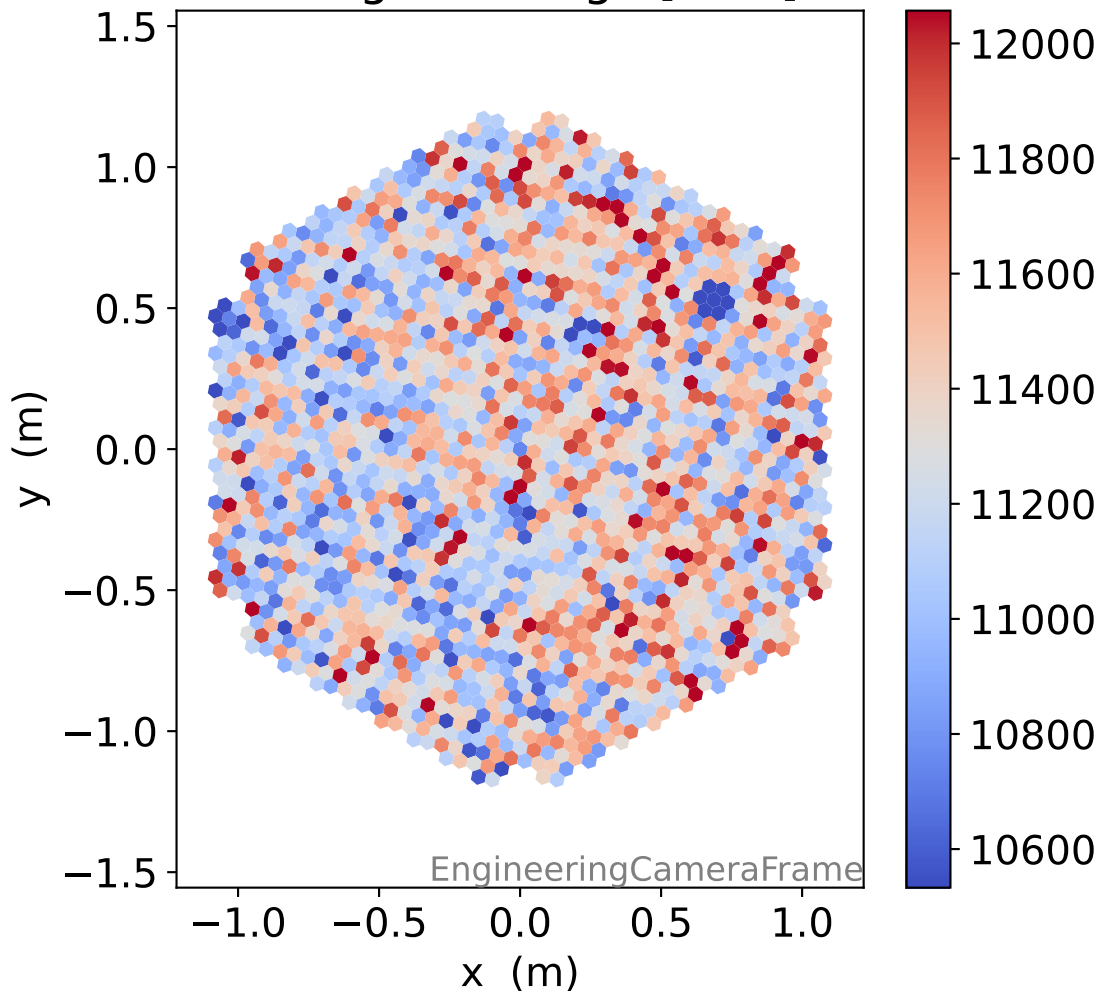


# Run 15555, Cat-A calibration

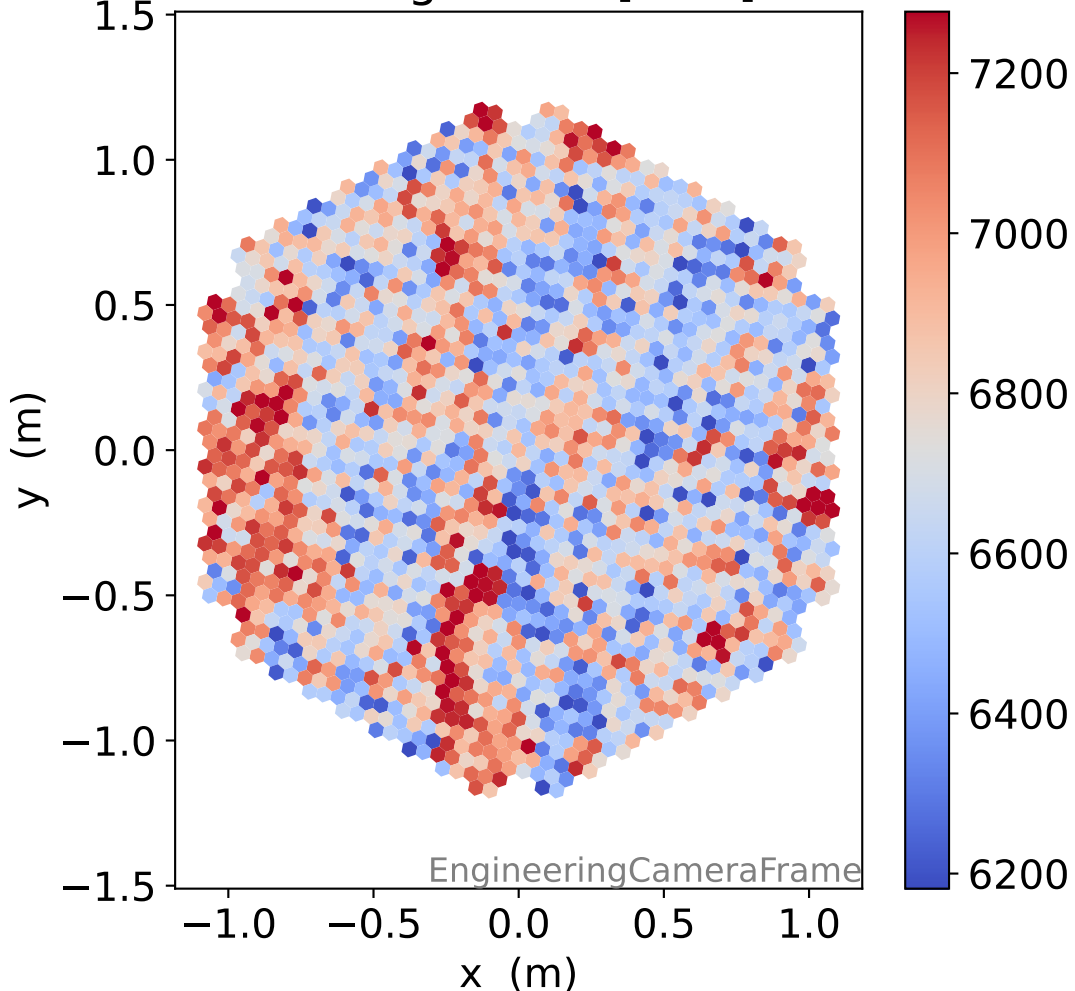
### HG signal charge [ADC]



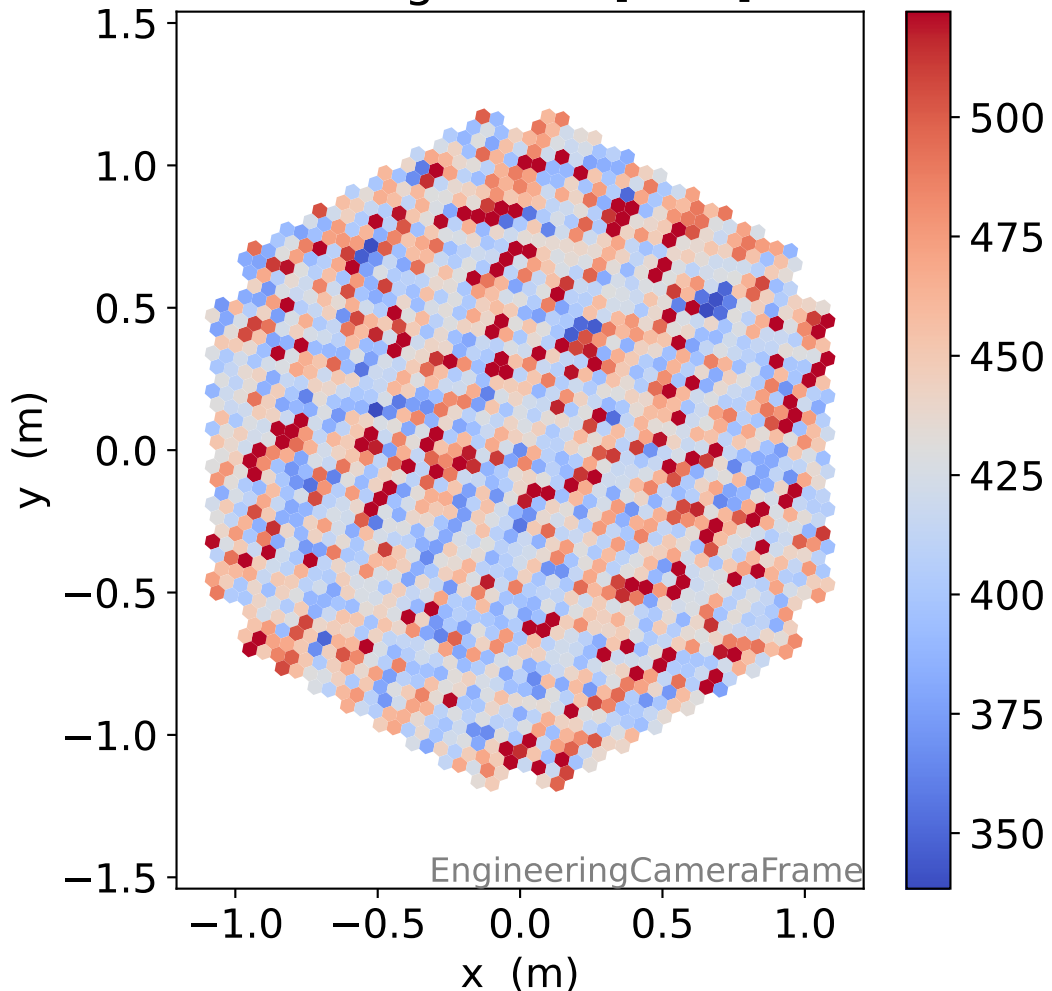
### LG signal charge [ADC]



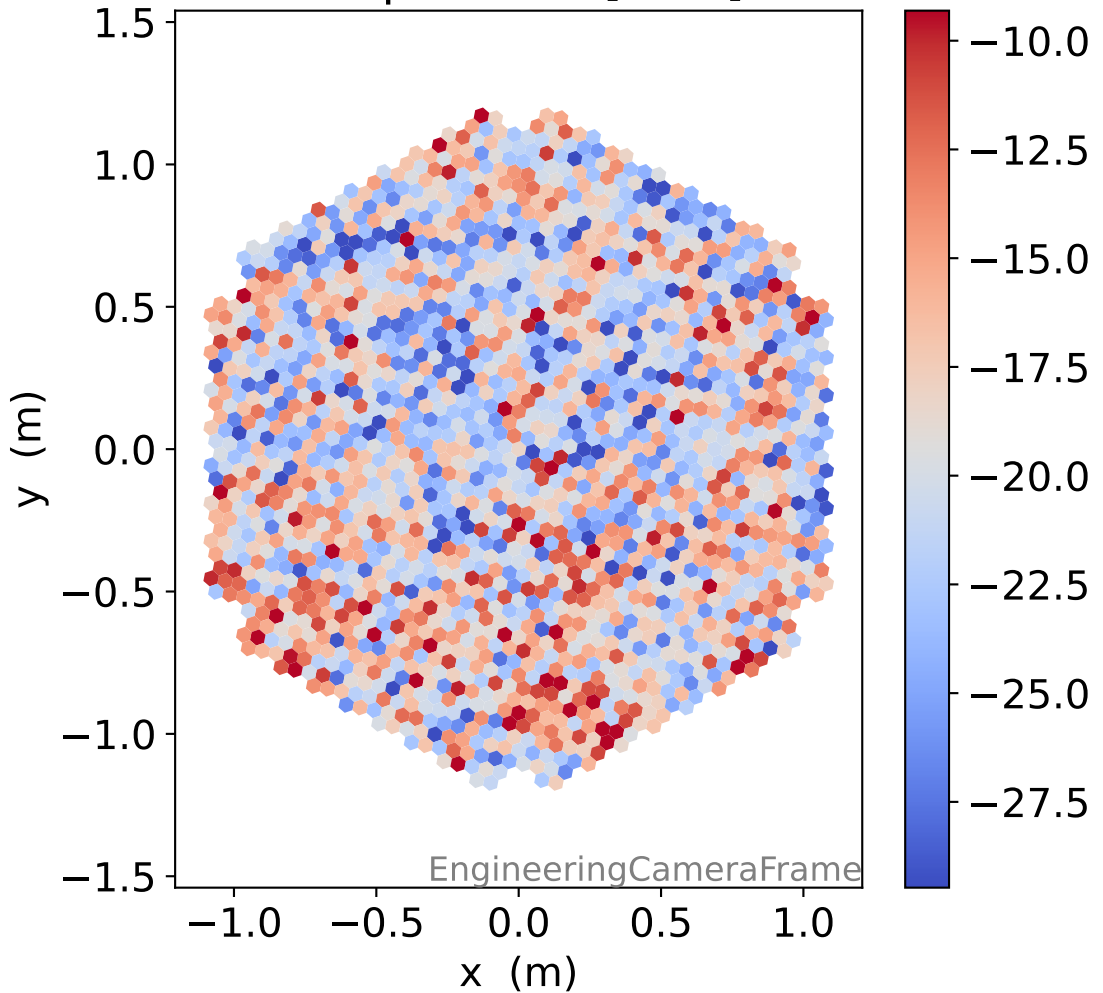
### HG signal std [ADC]



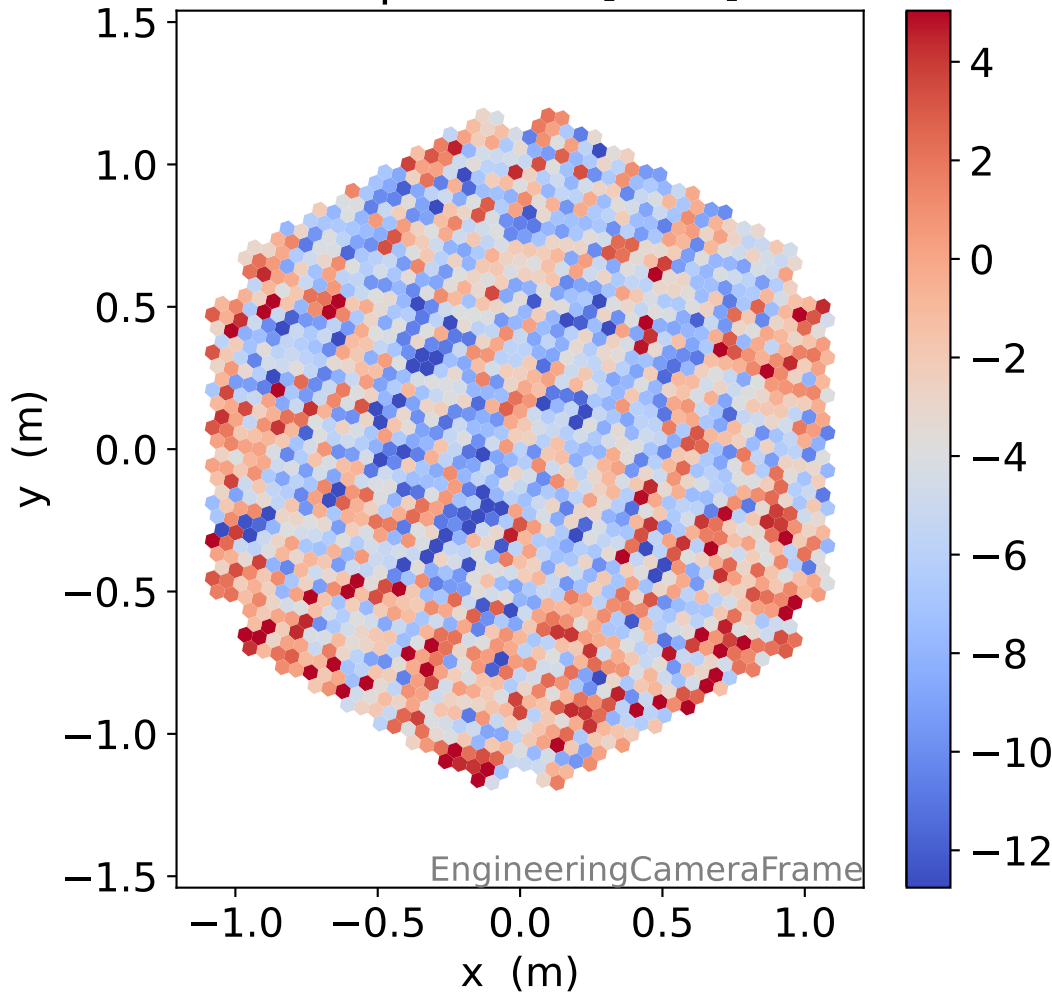
### LG signal std [ADC]



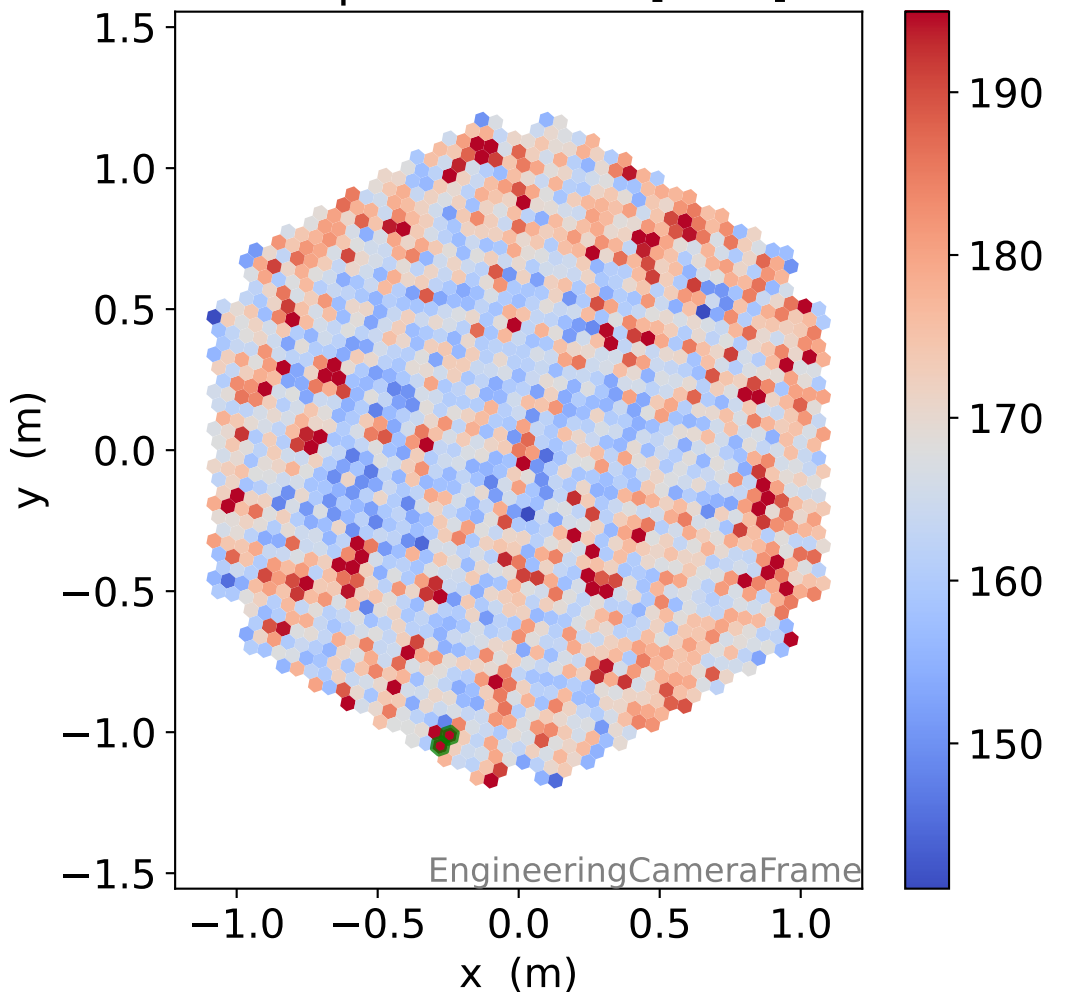
### HG pedestal [ADC]



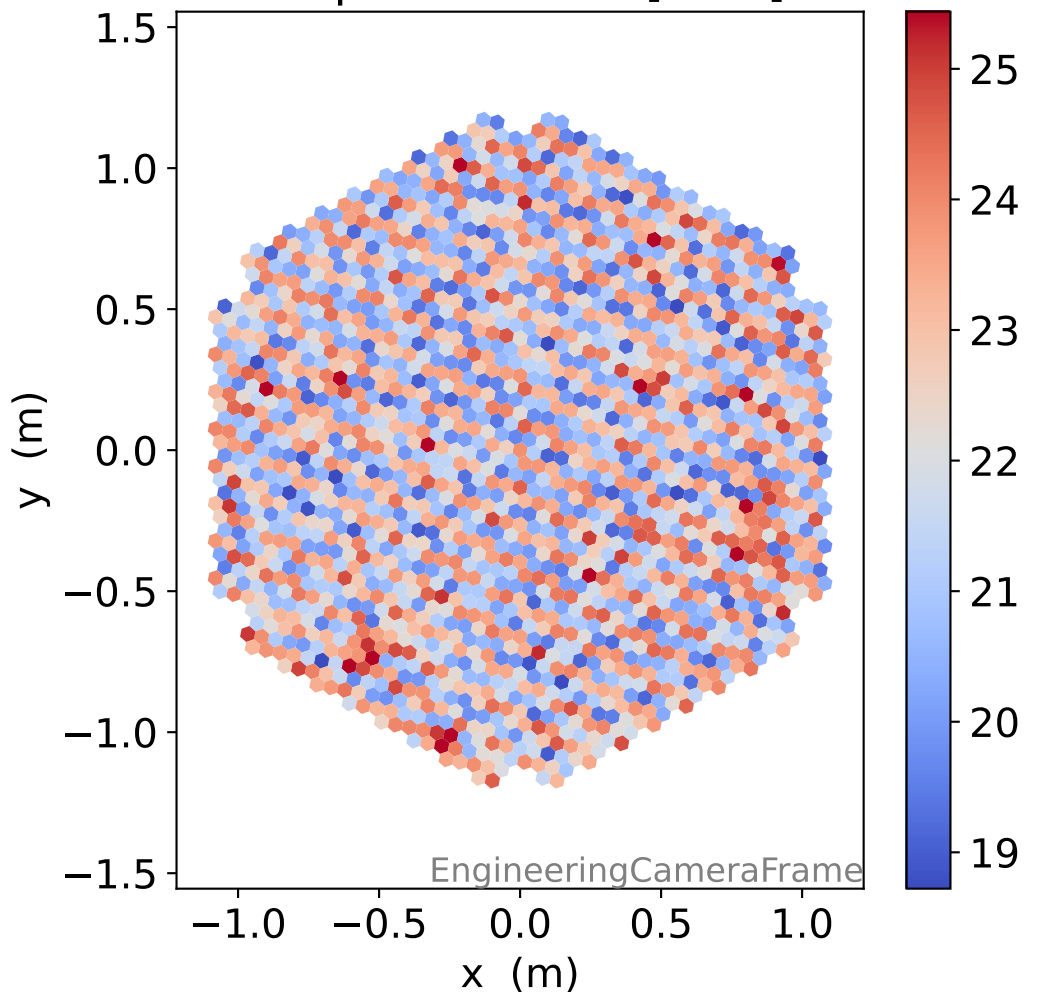
### LG pedestal [ADC]



### HG pedestal std [ADC]

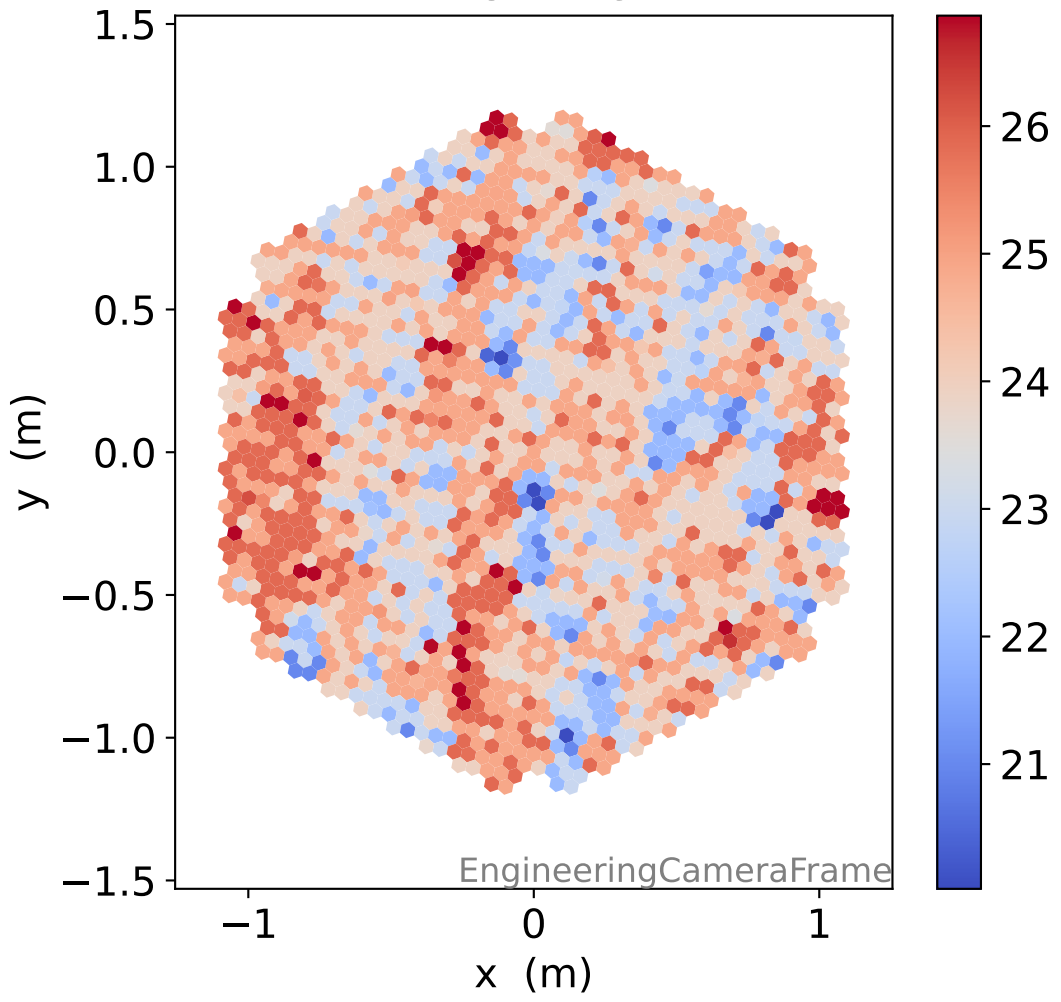


### LG pedestal std [ADC]

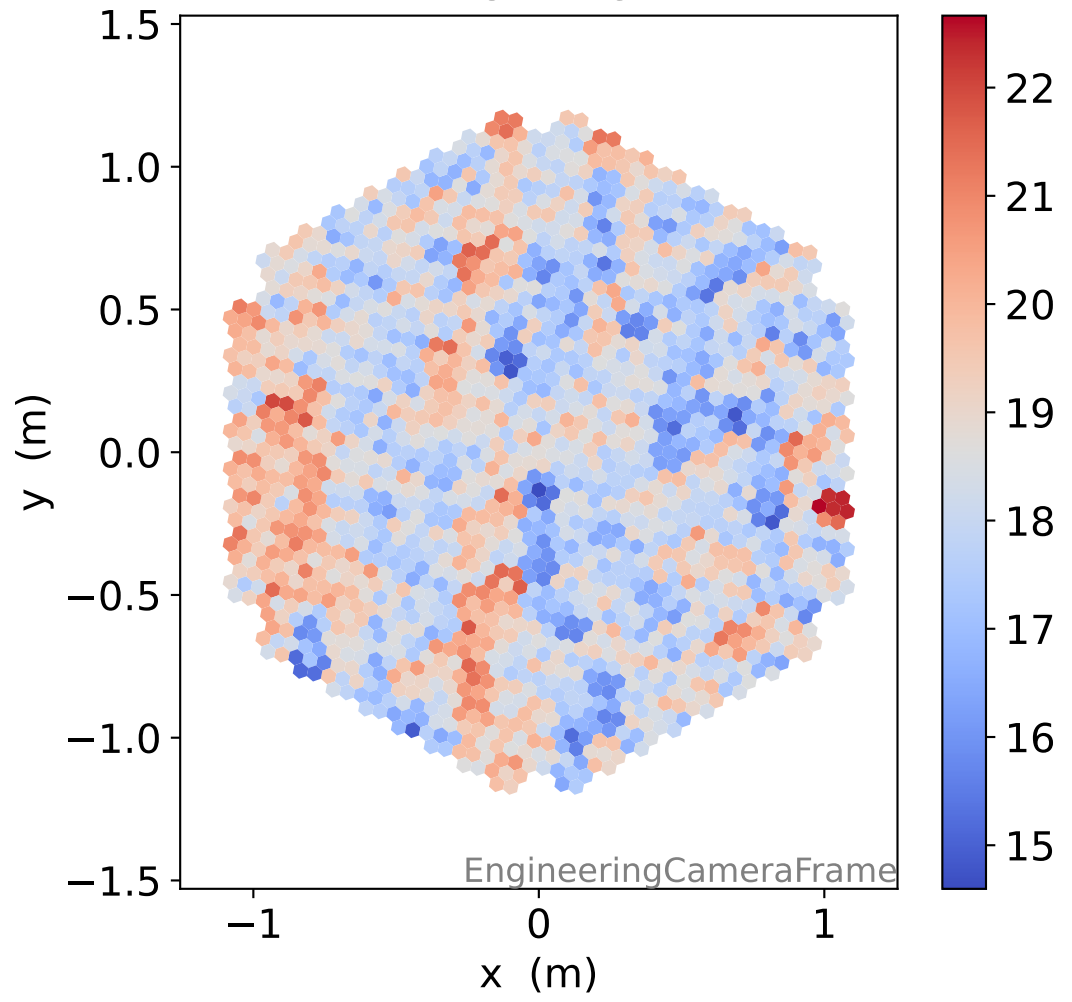


# Run 15555

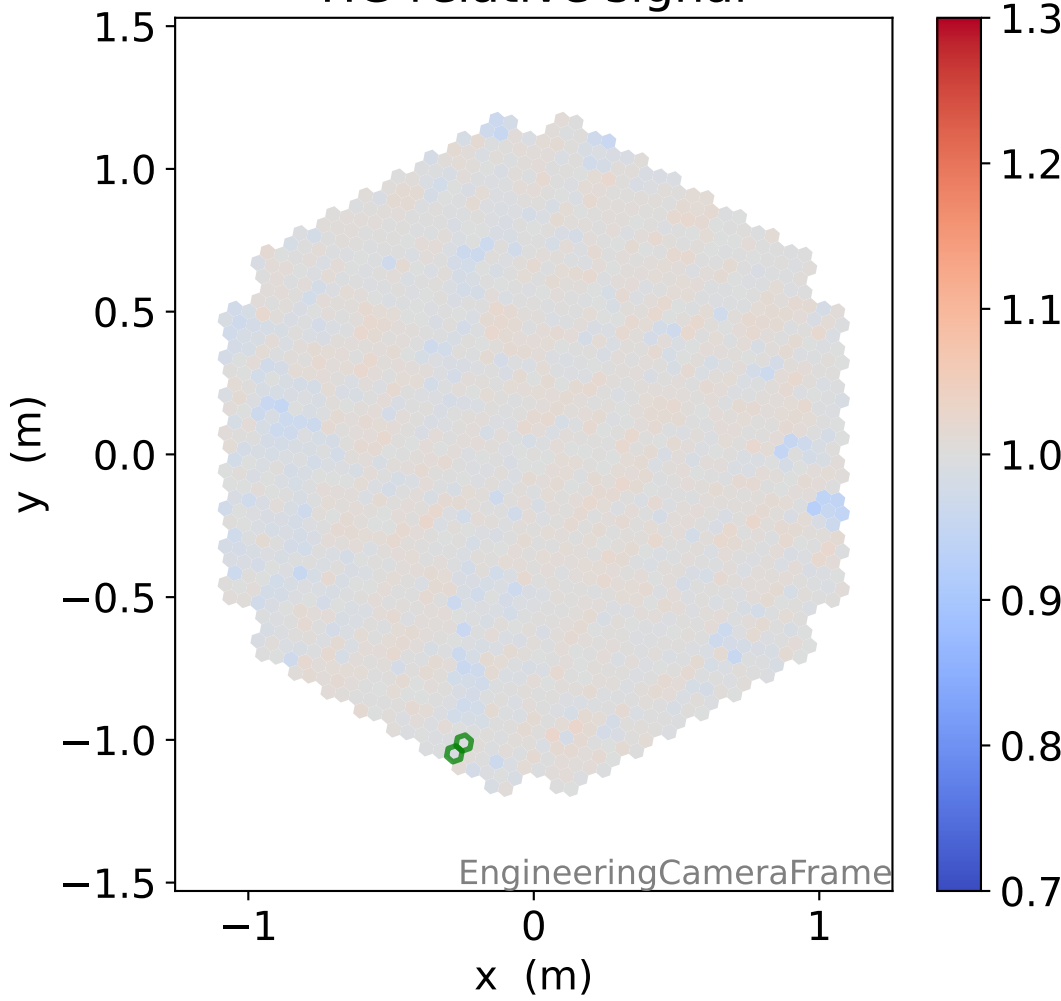
### HG time



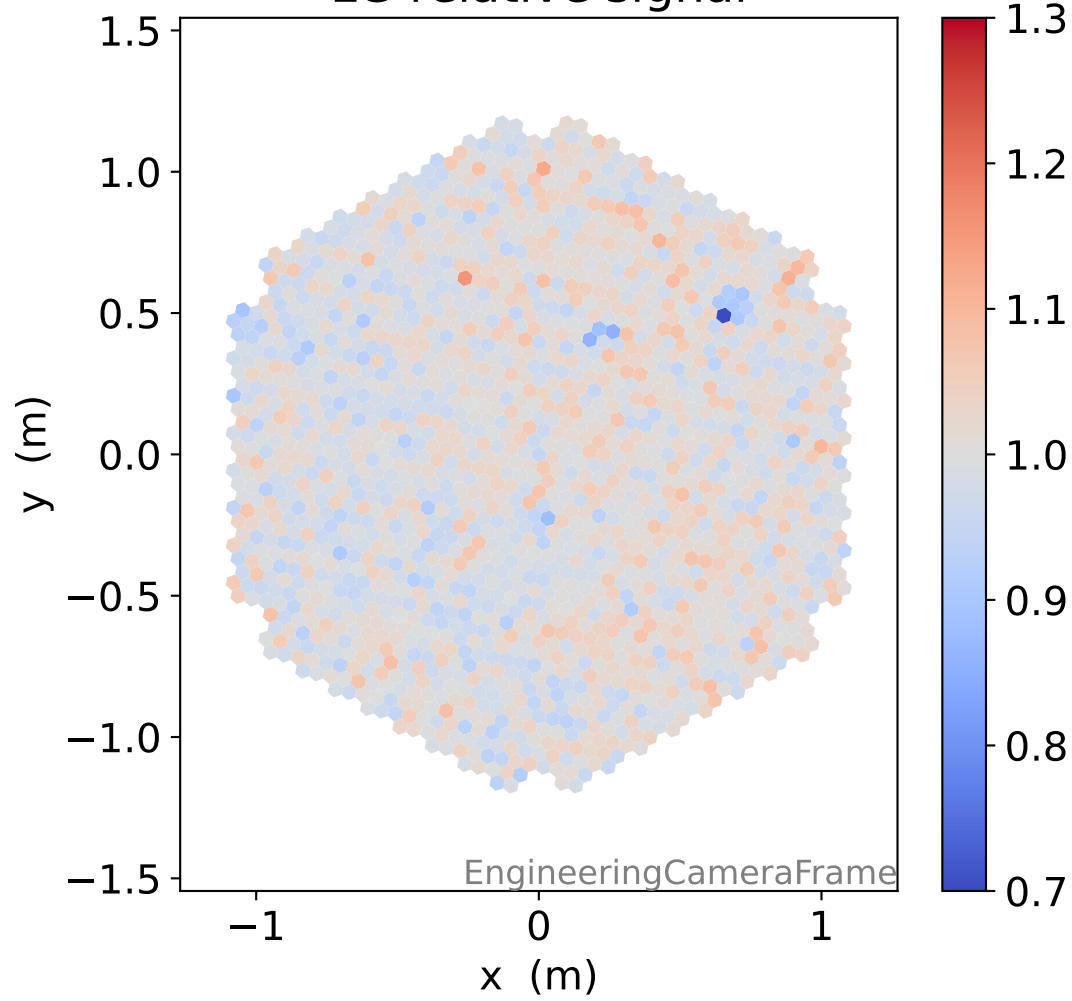
### LG time



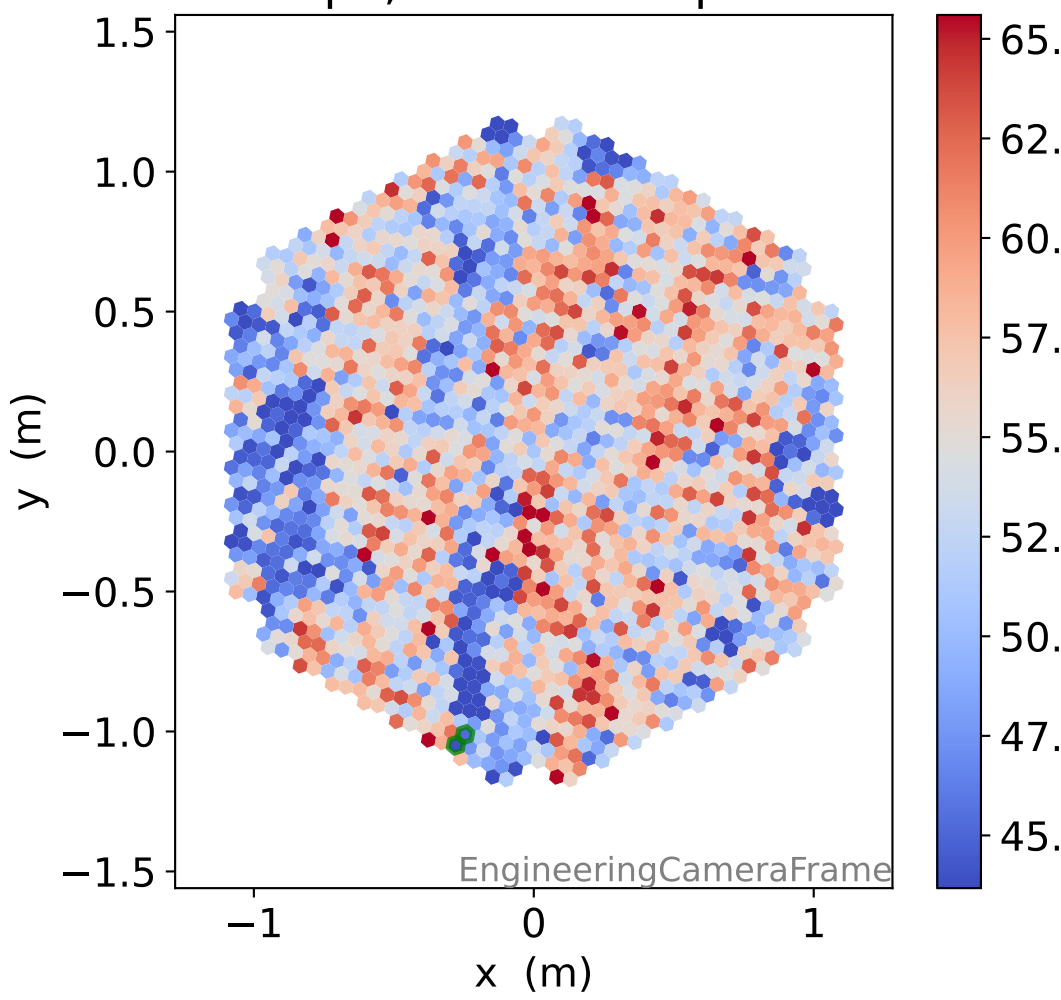
### HG relative signal



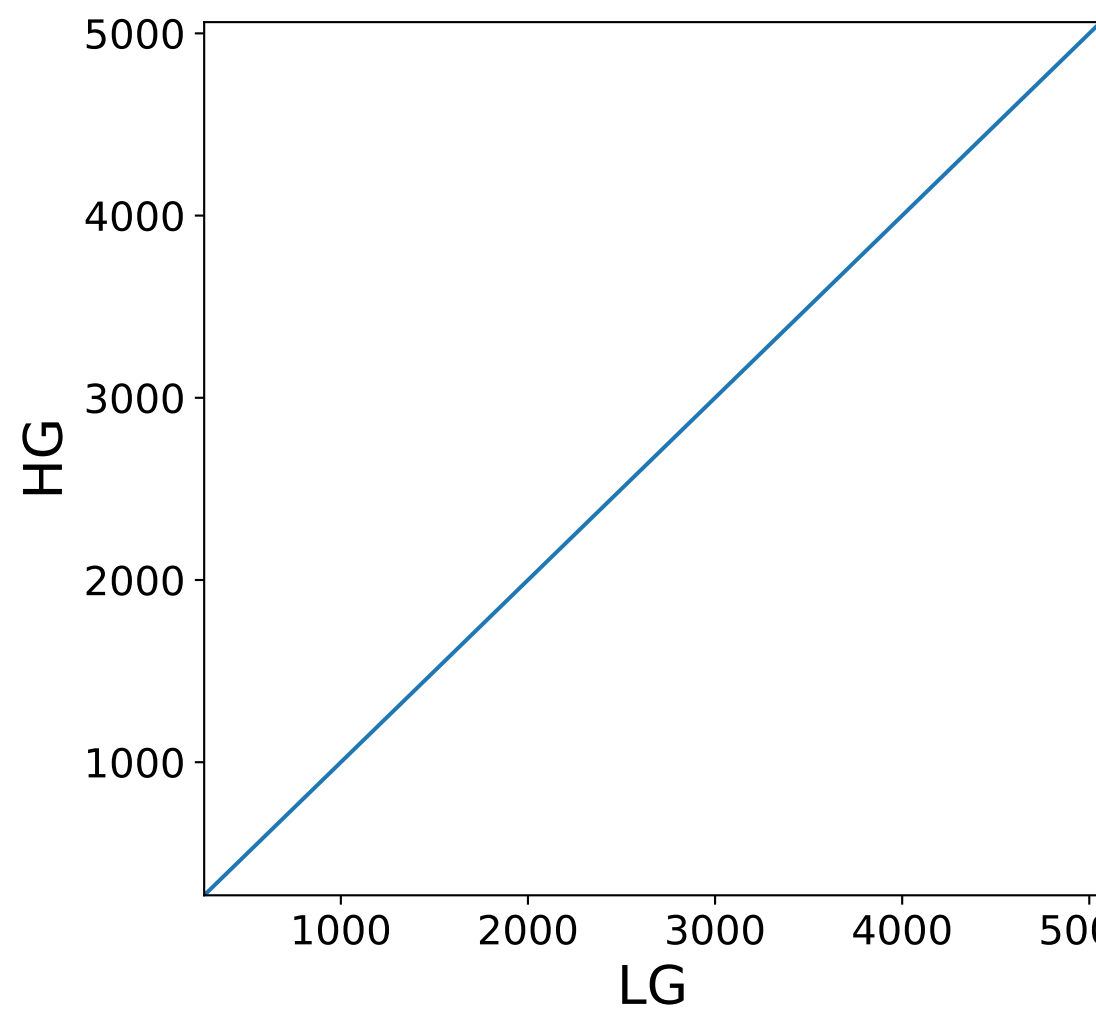
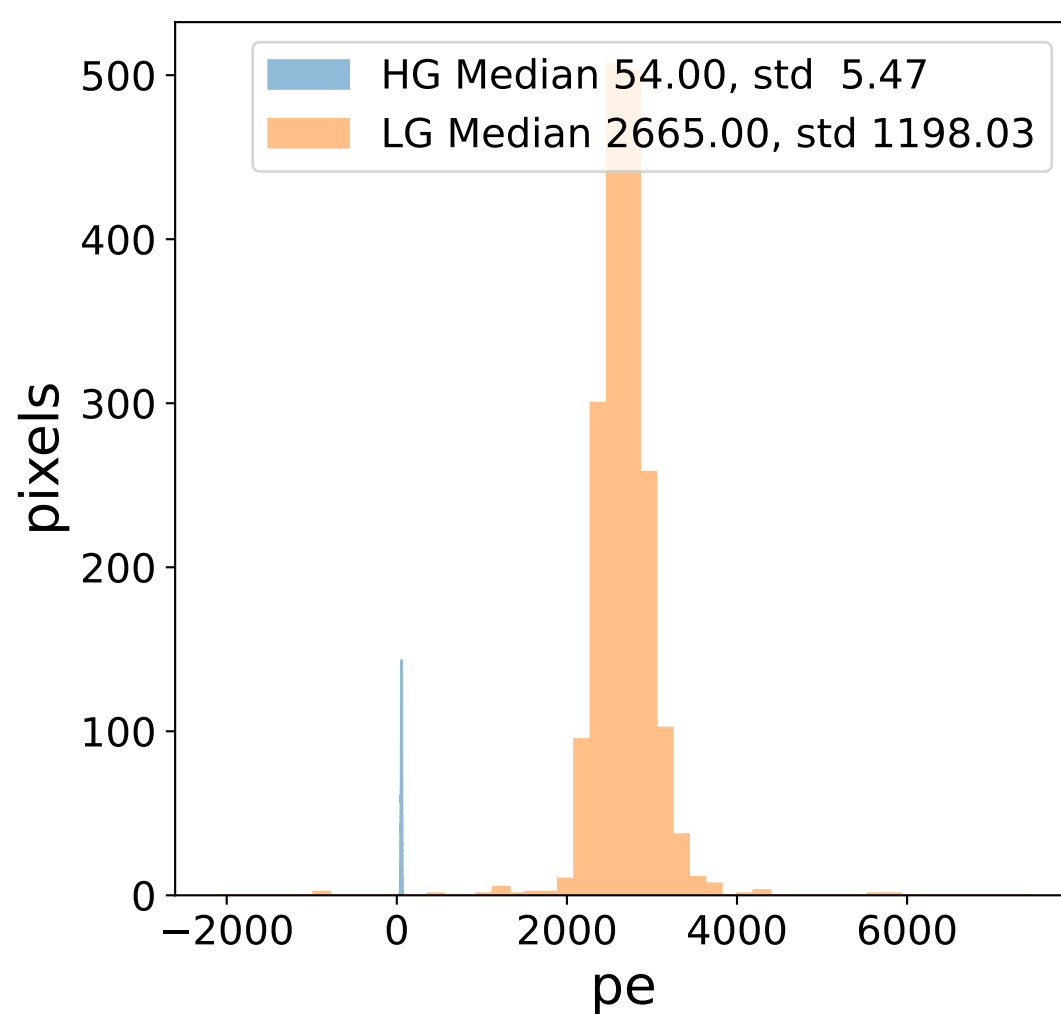
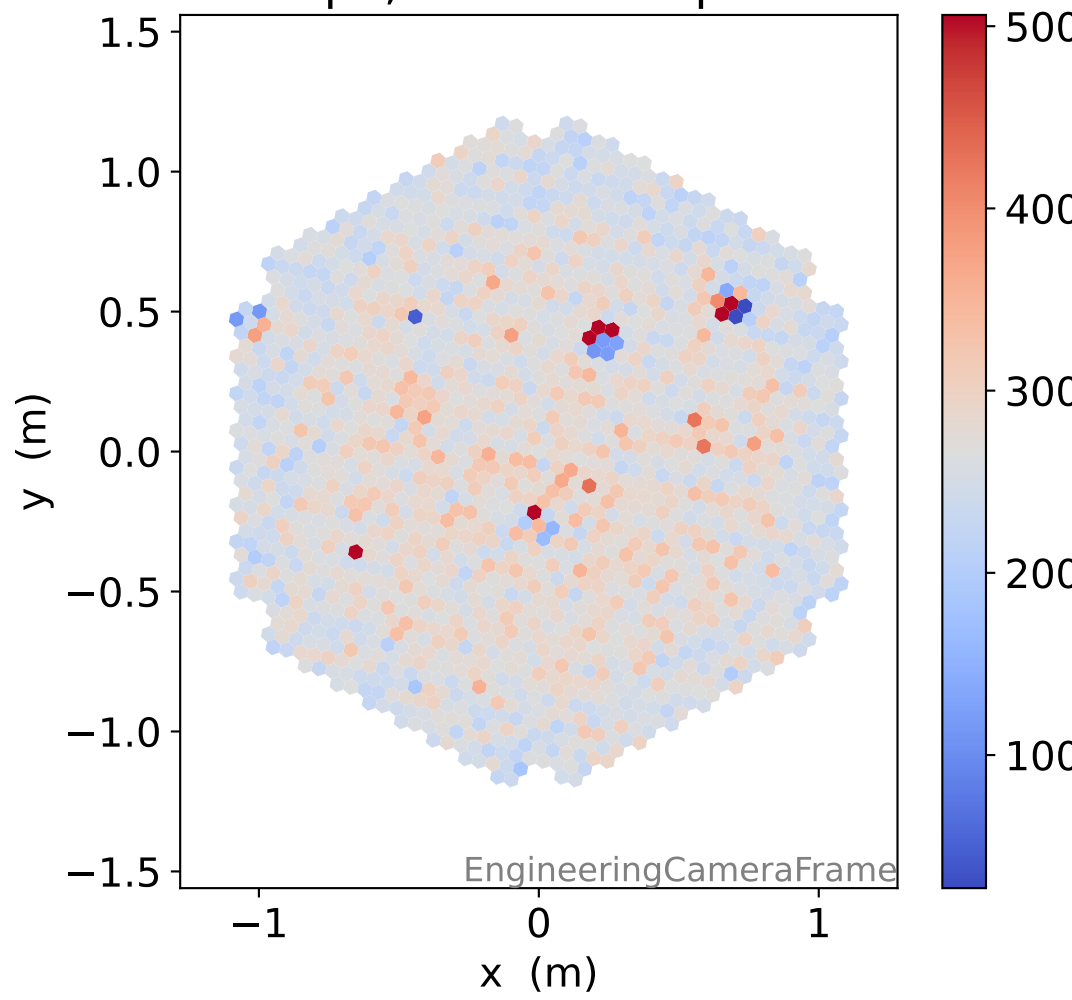
### LG relative signal



### HG pe, 2 unusable pixels

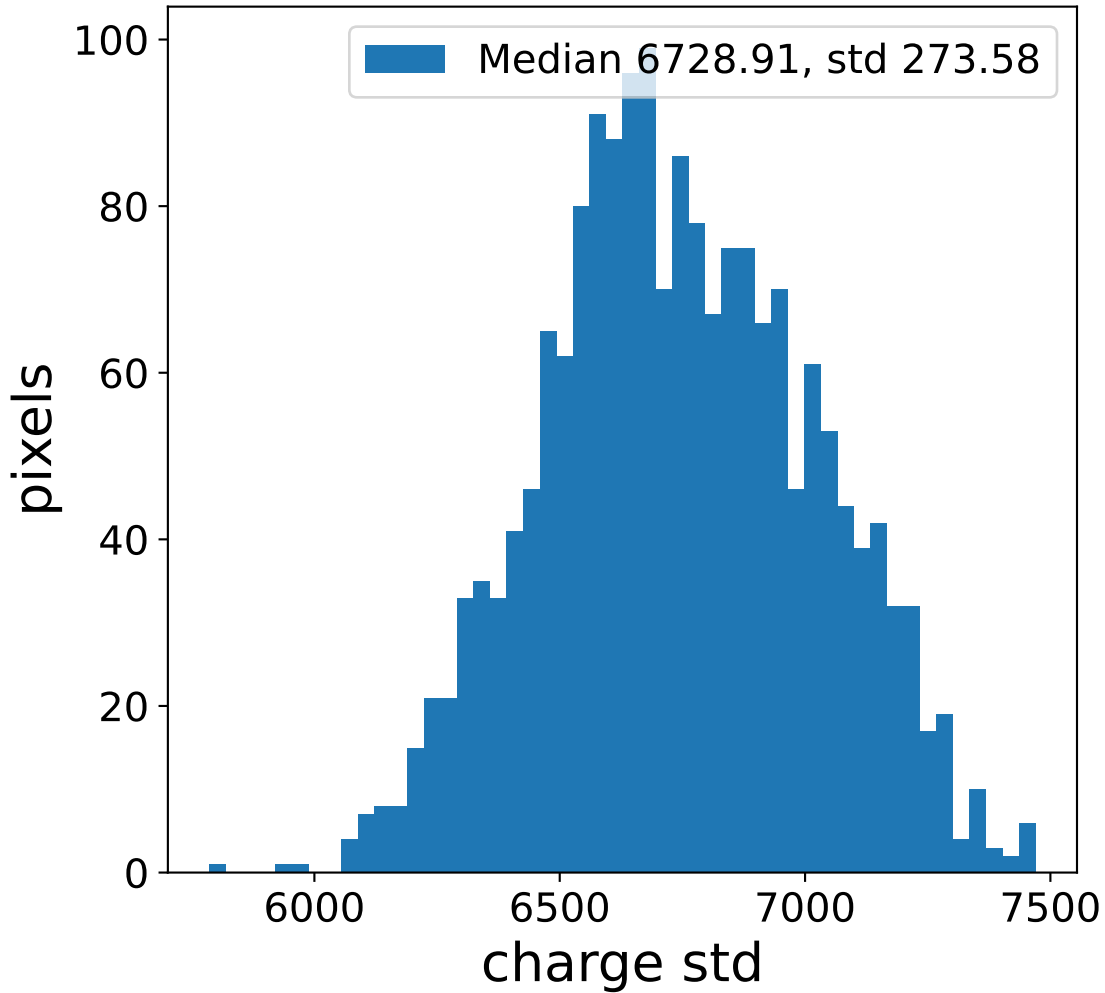
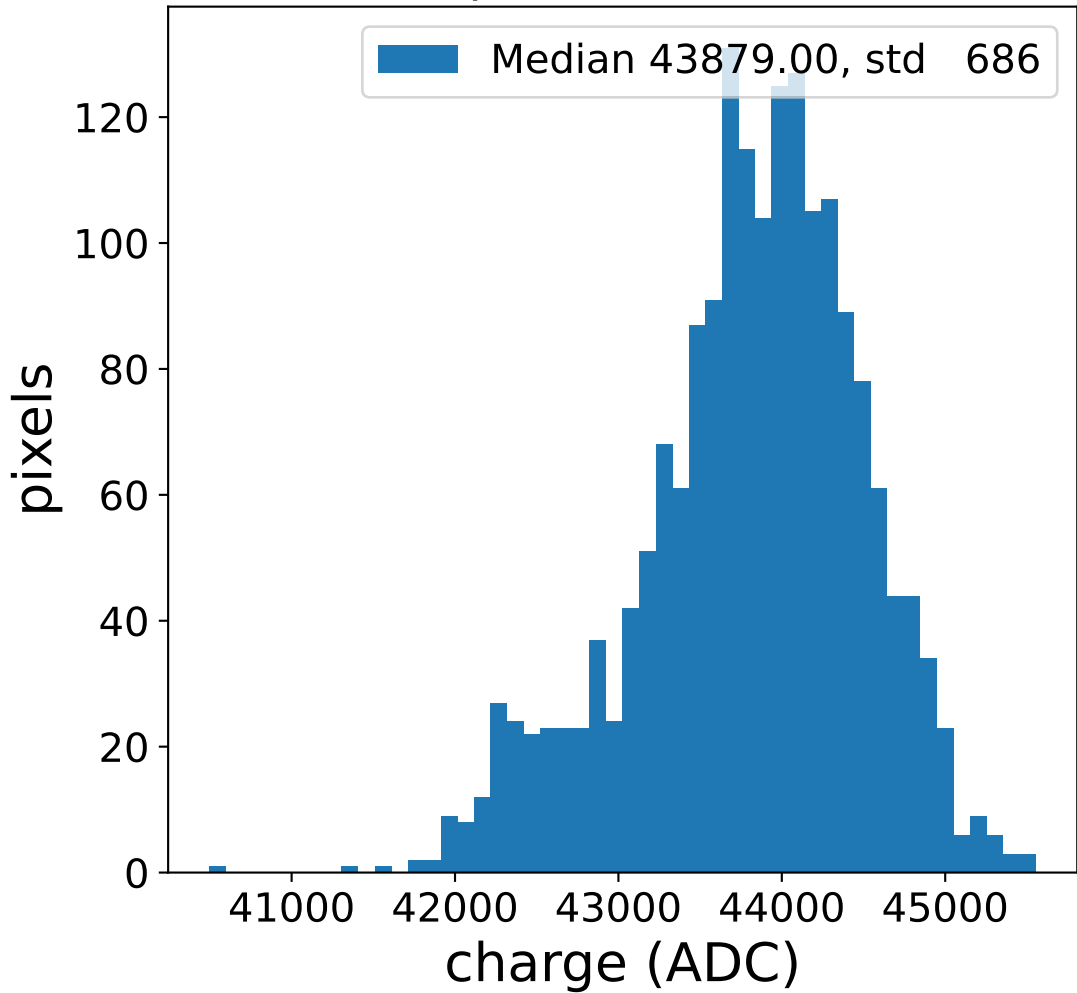


### LG pe, 0 unusable pixels

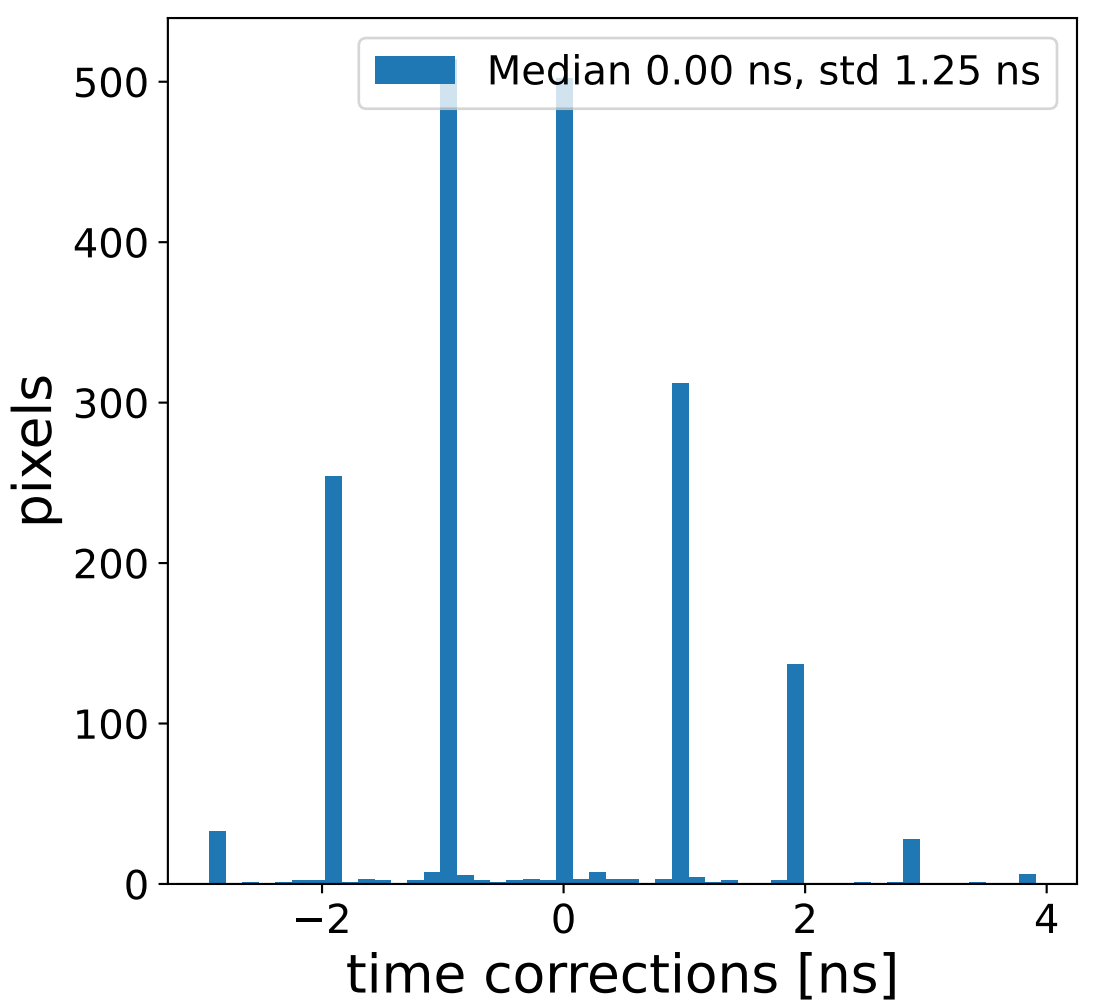
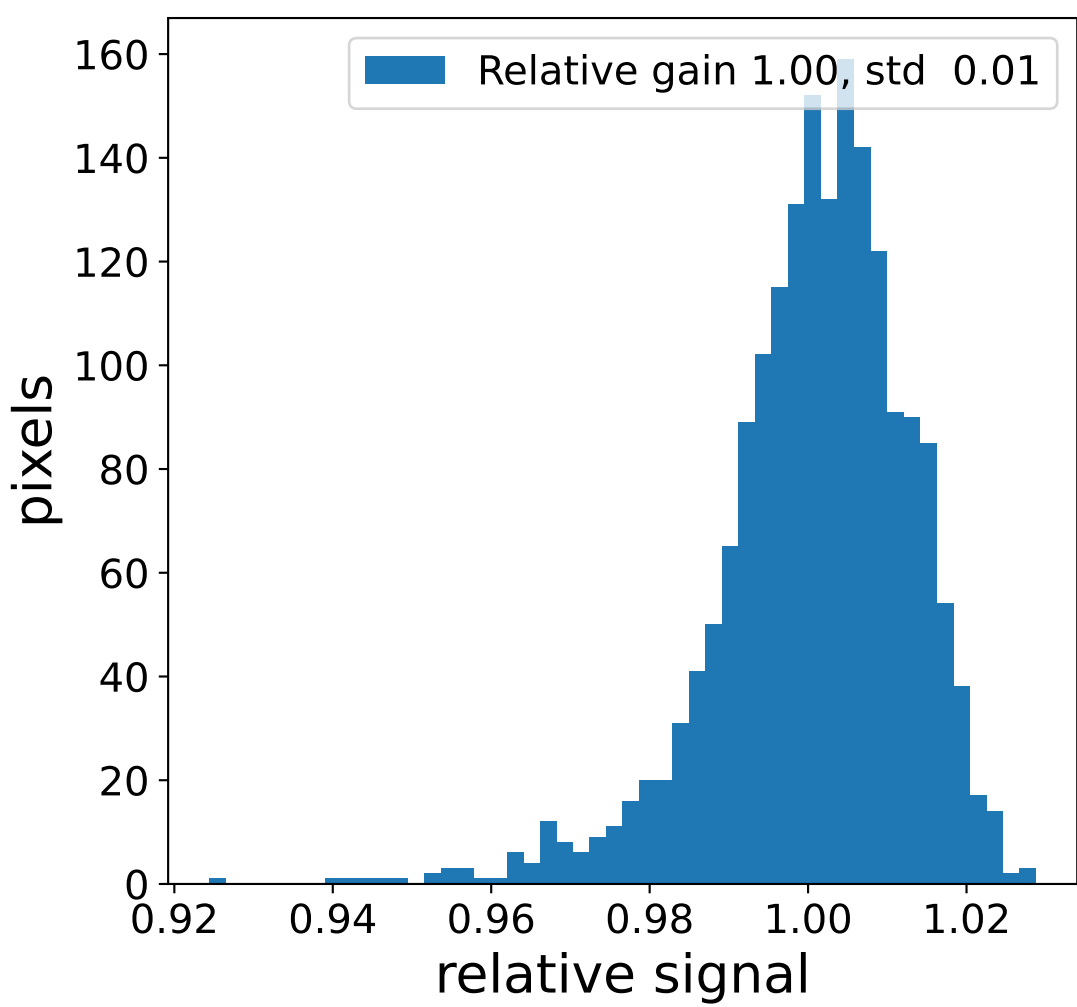
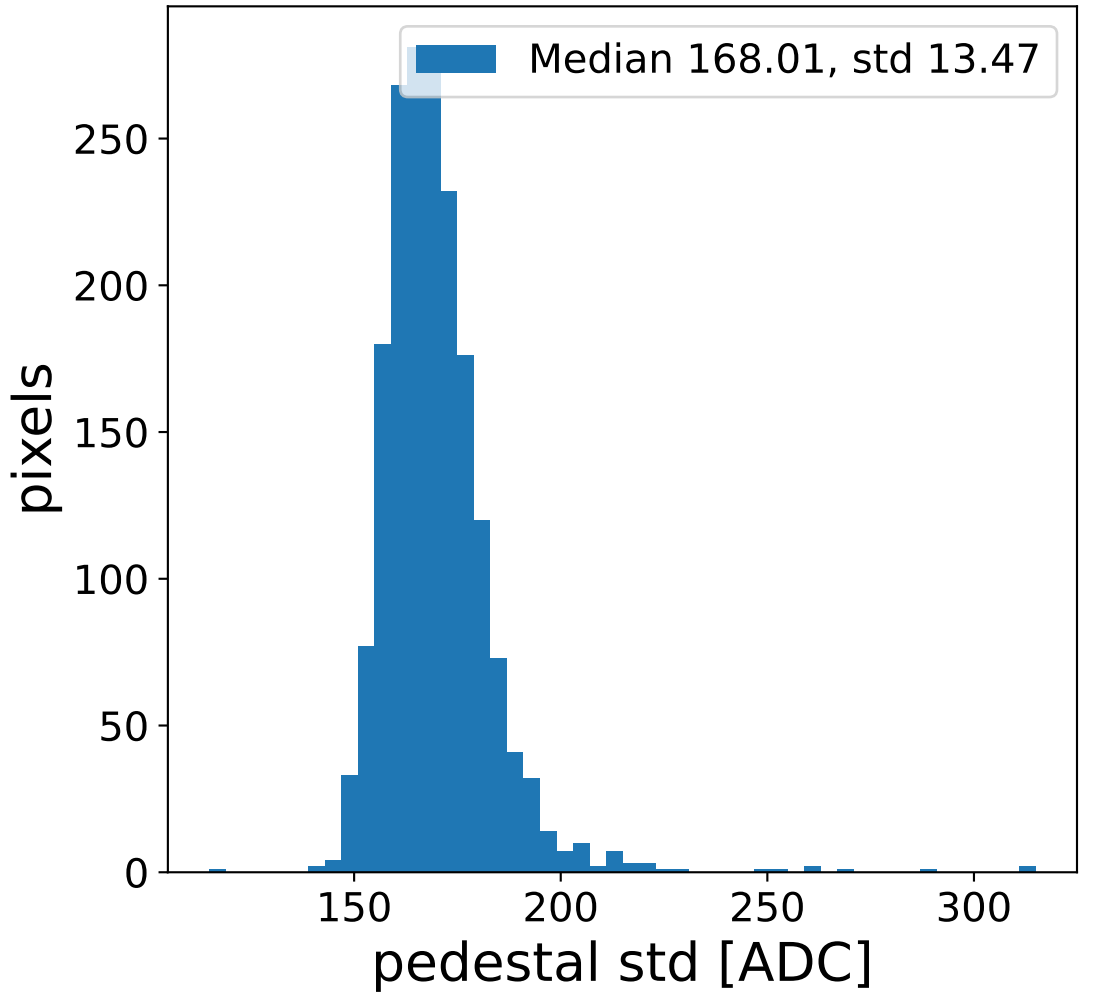
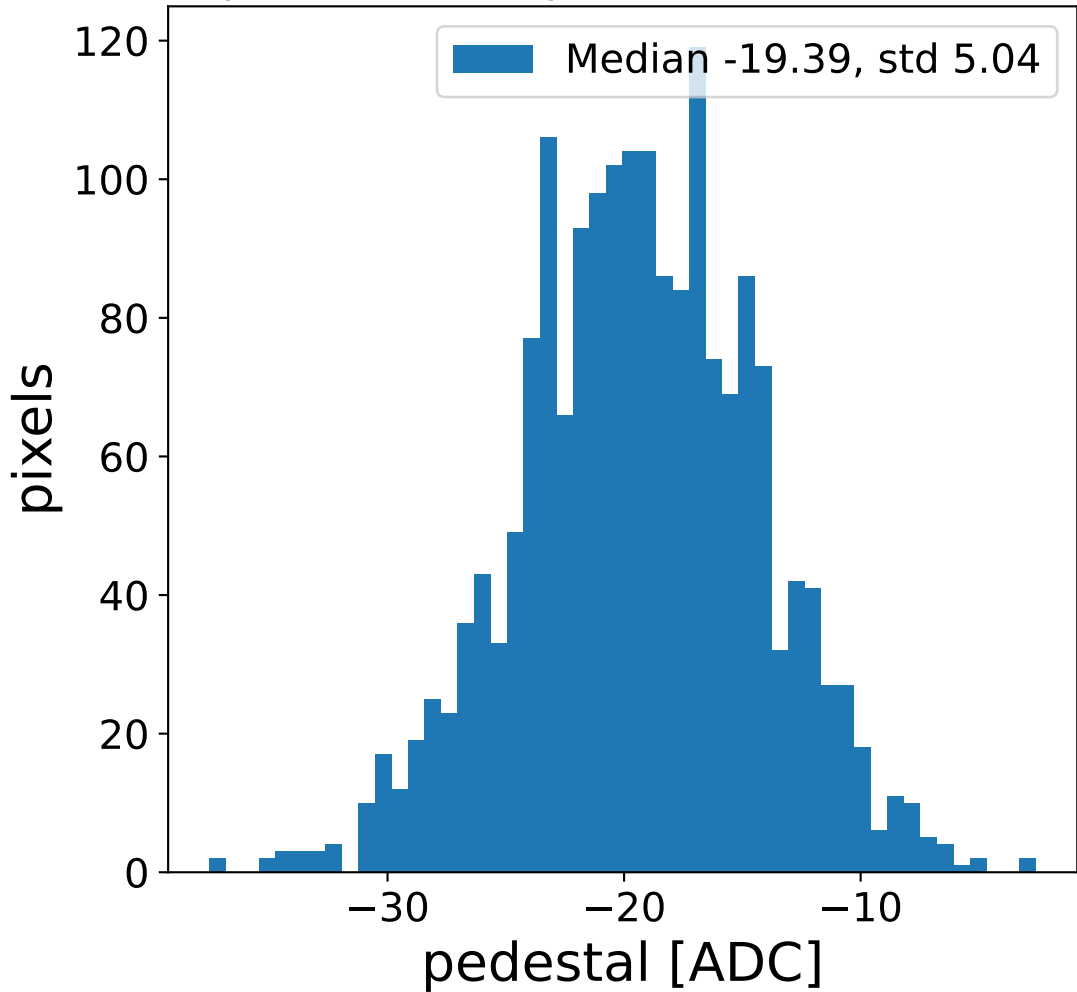


# Run 15555 channel: HG

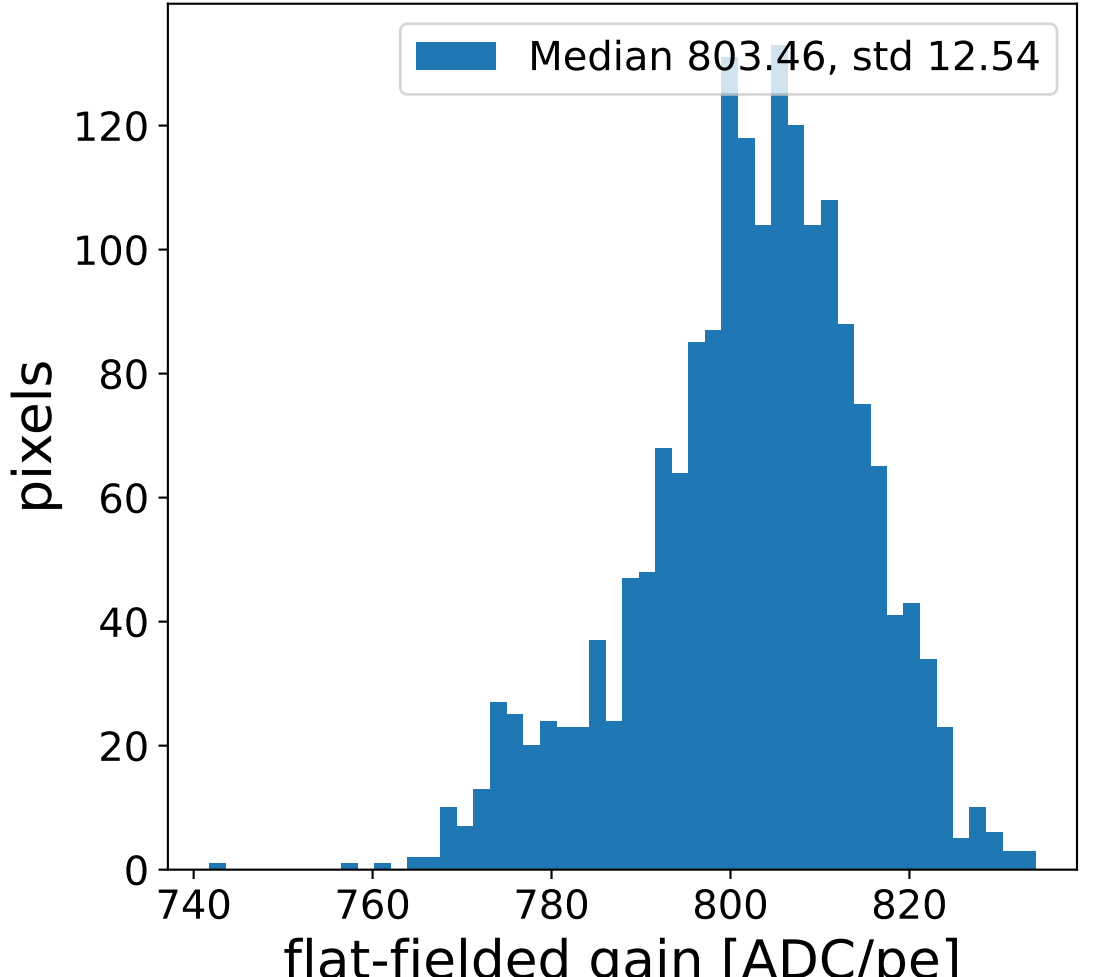
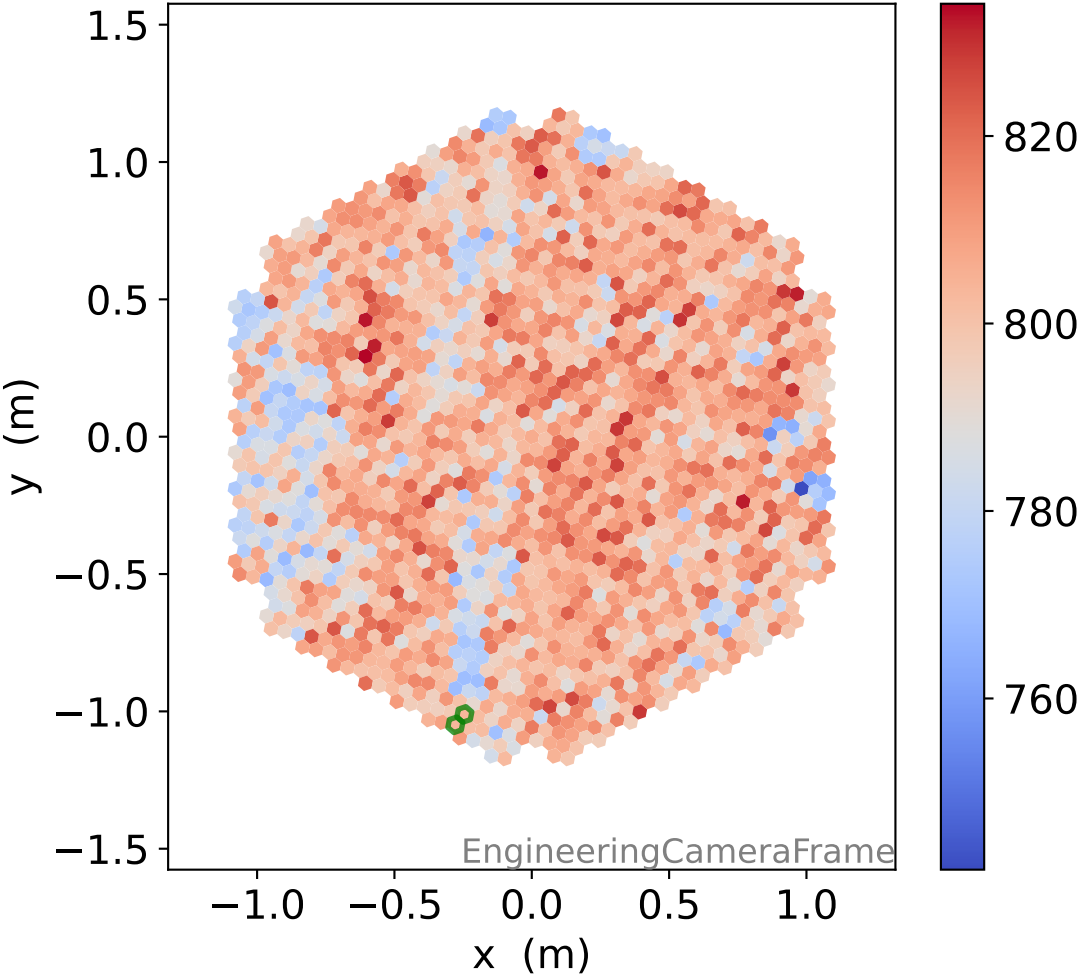
### FF sample of 10000 events



### pedestal sample of 10000 events

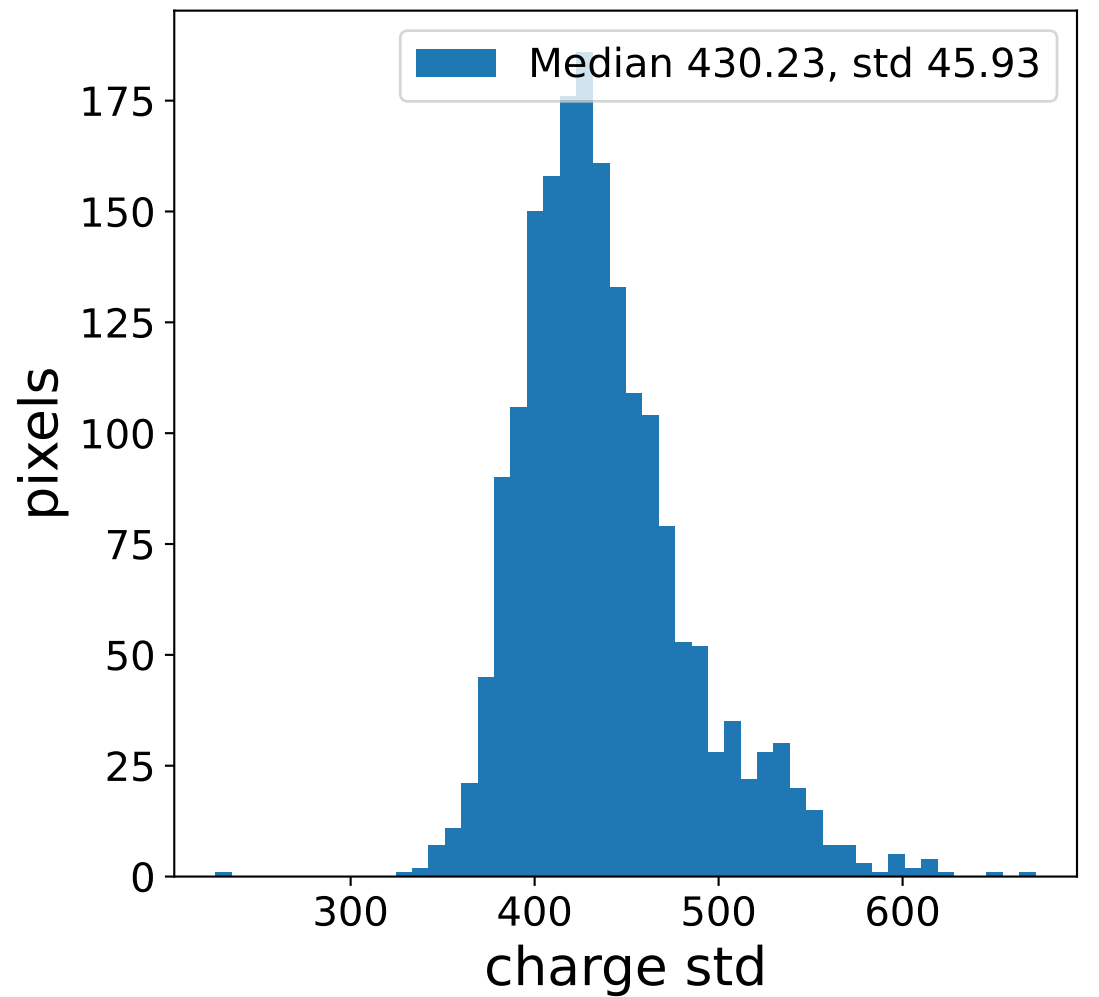
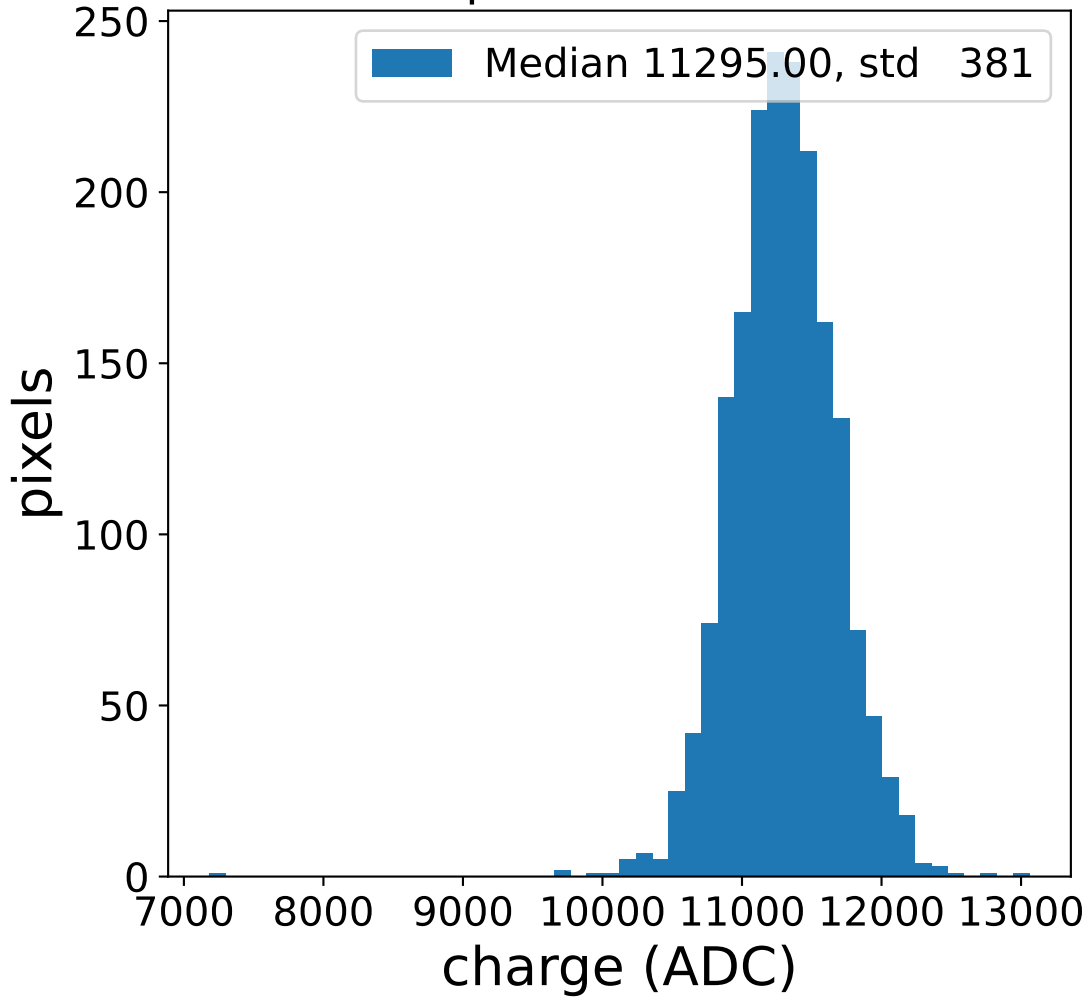


### flat-fielded gain [ADC/pe]

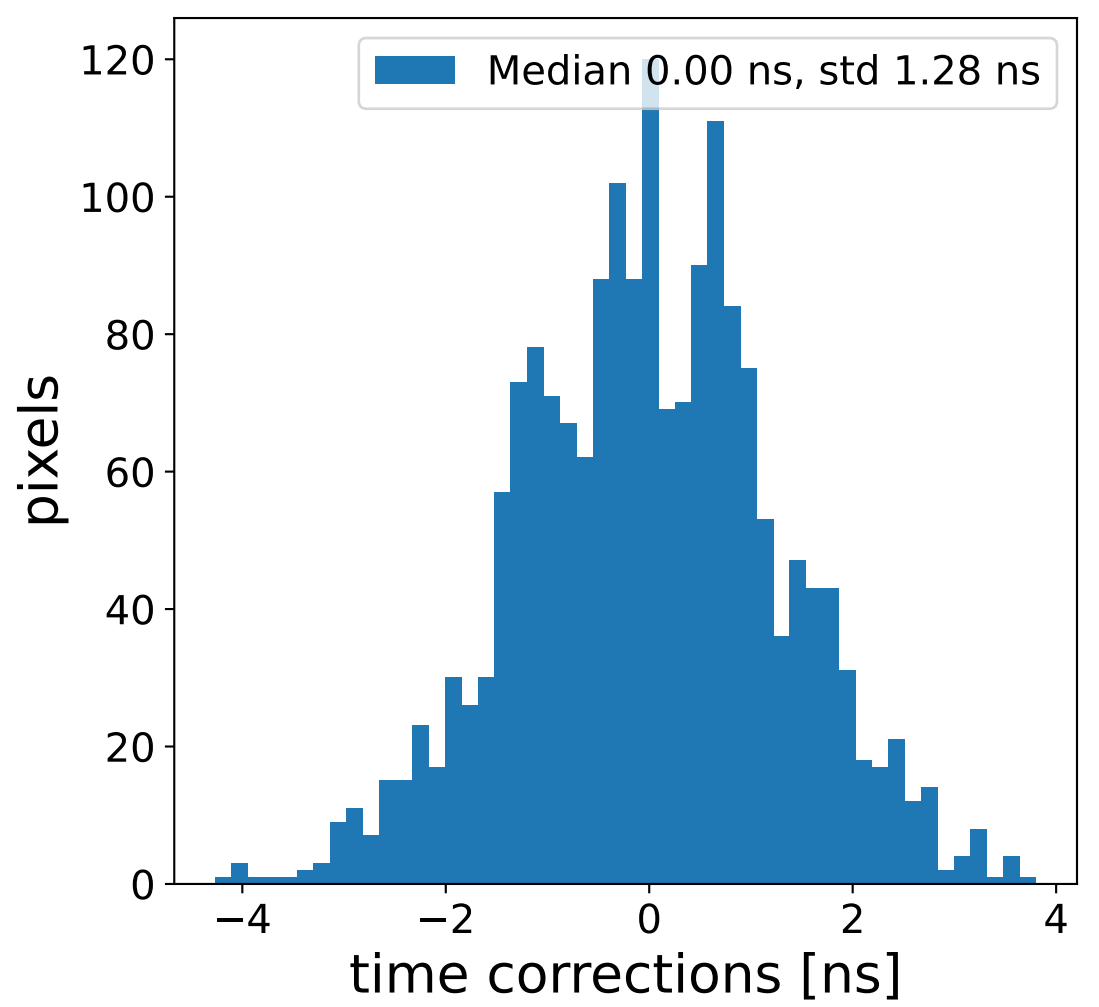
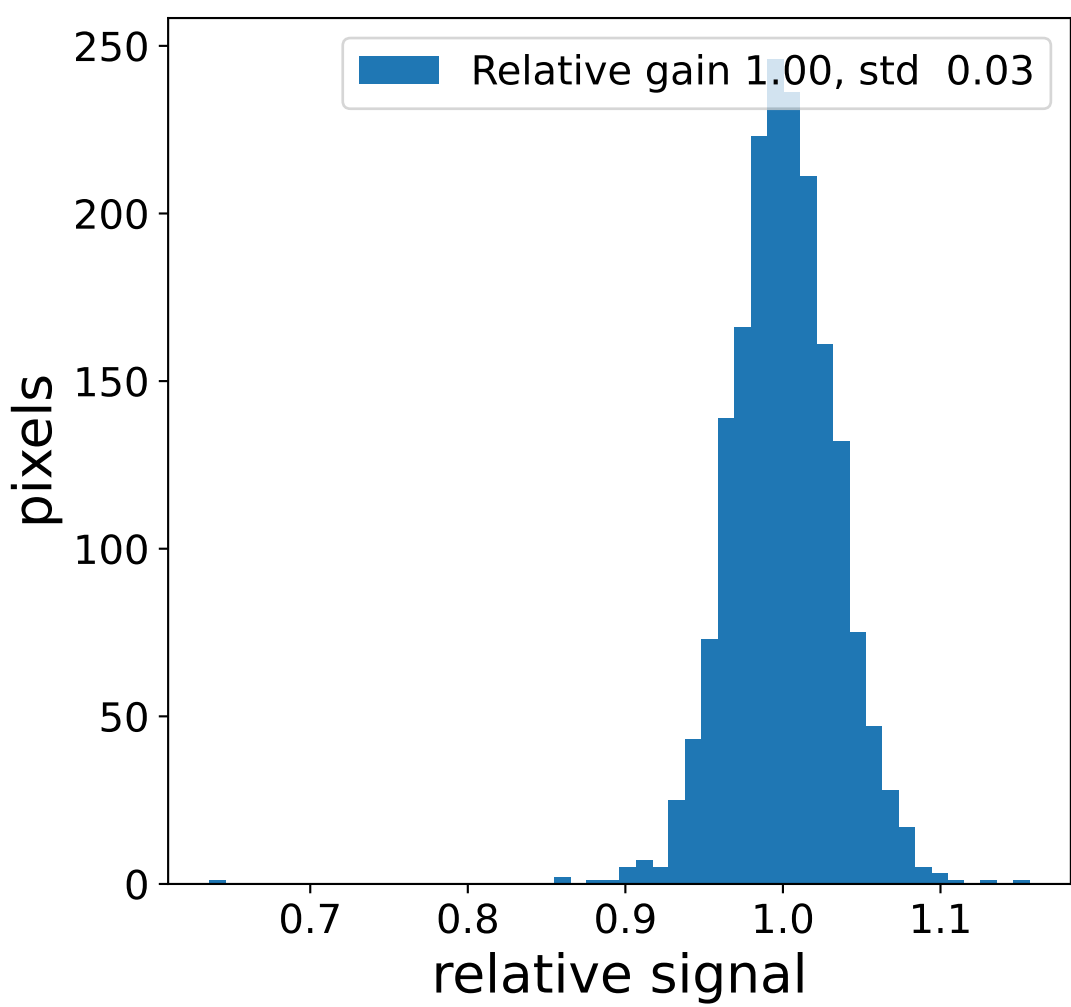
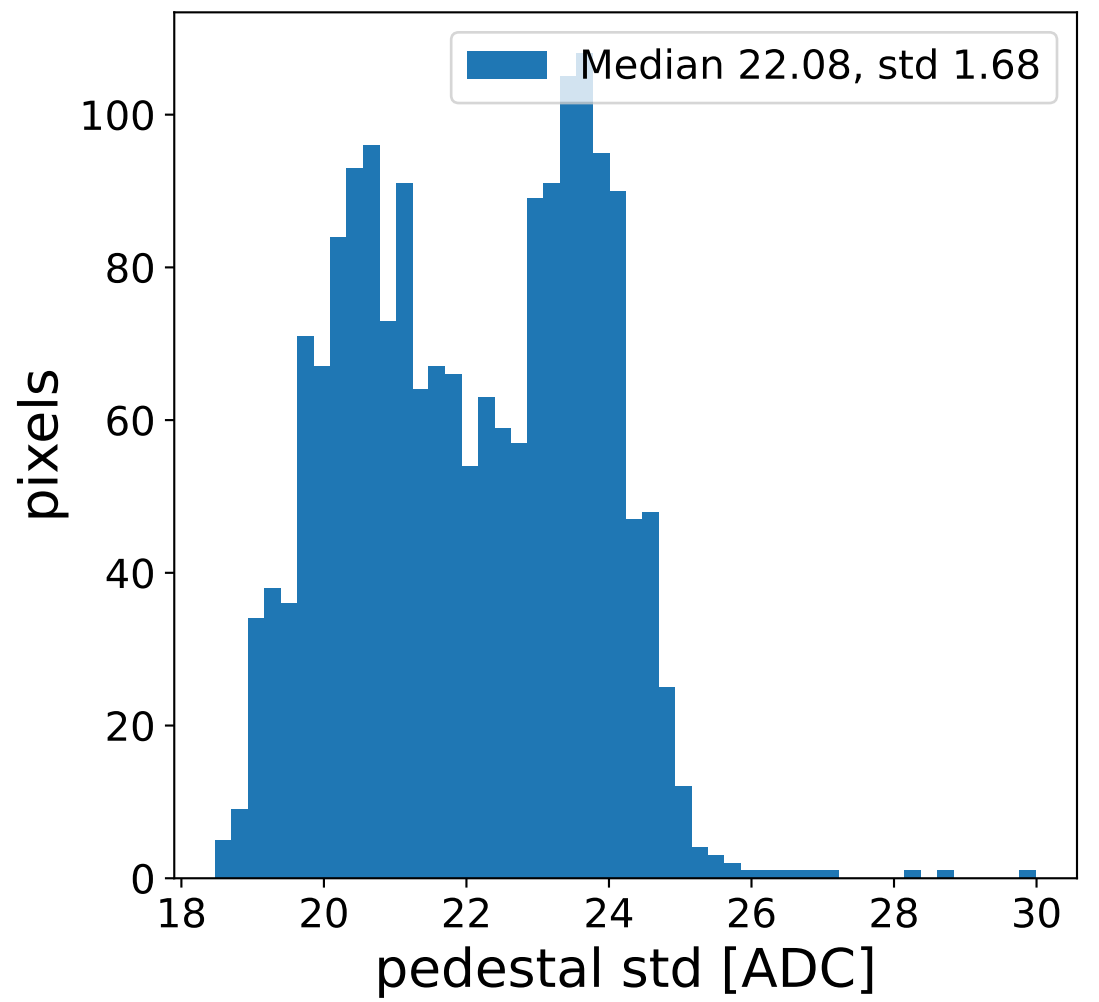
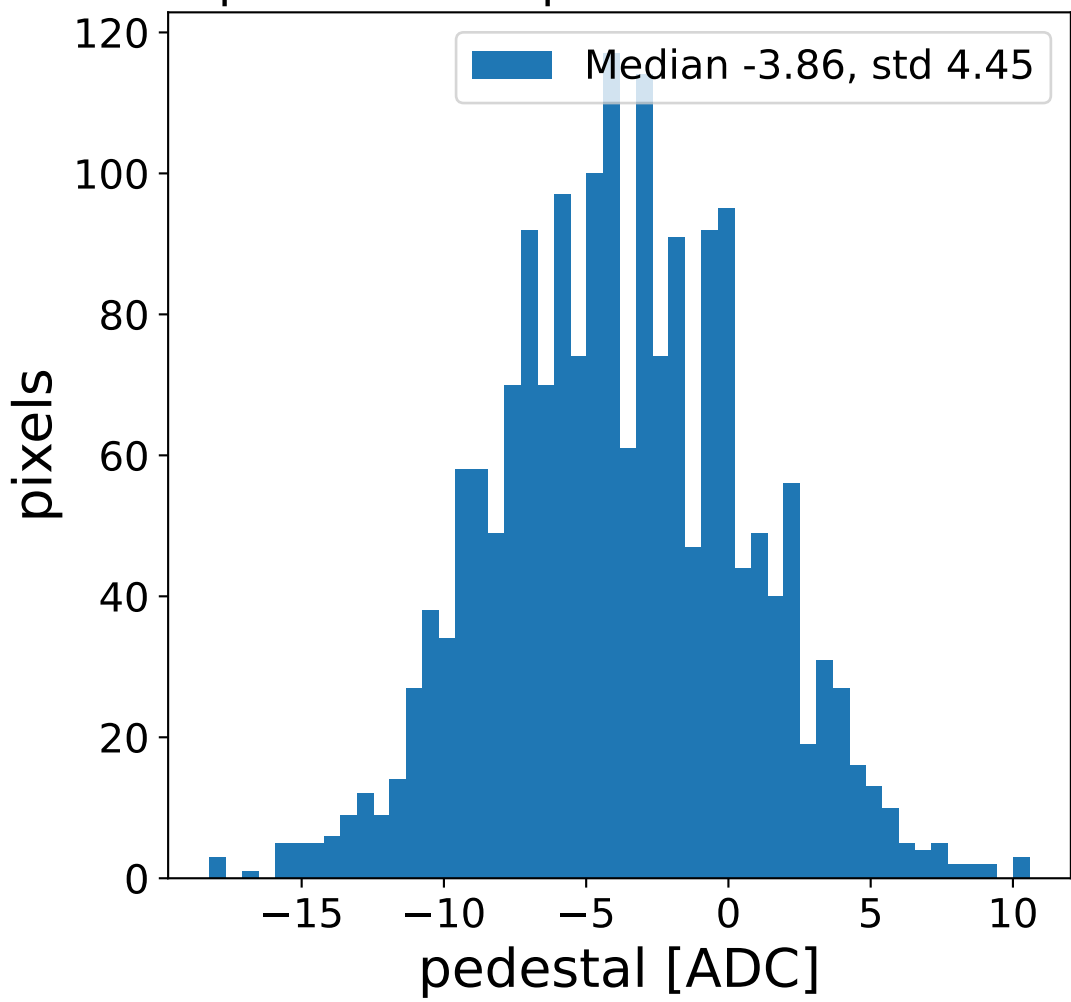


# Run 1555 channel: LG

### FF sample of 10000 events



### pedestal sample of 10000 events



### flat-fielded gain [ADC/pe]

