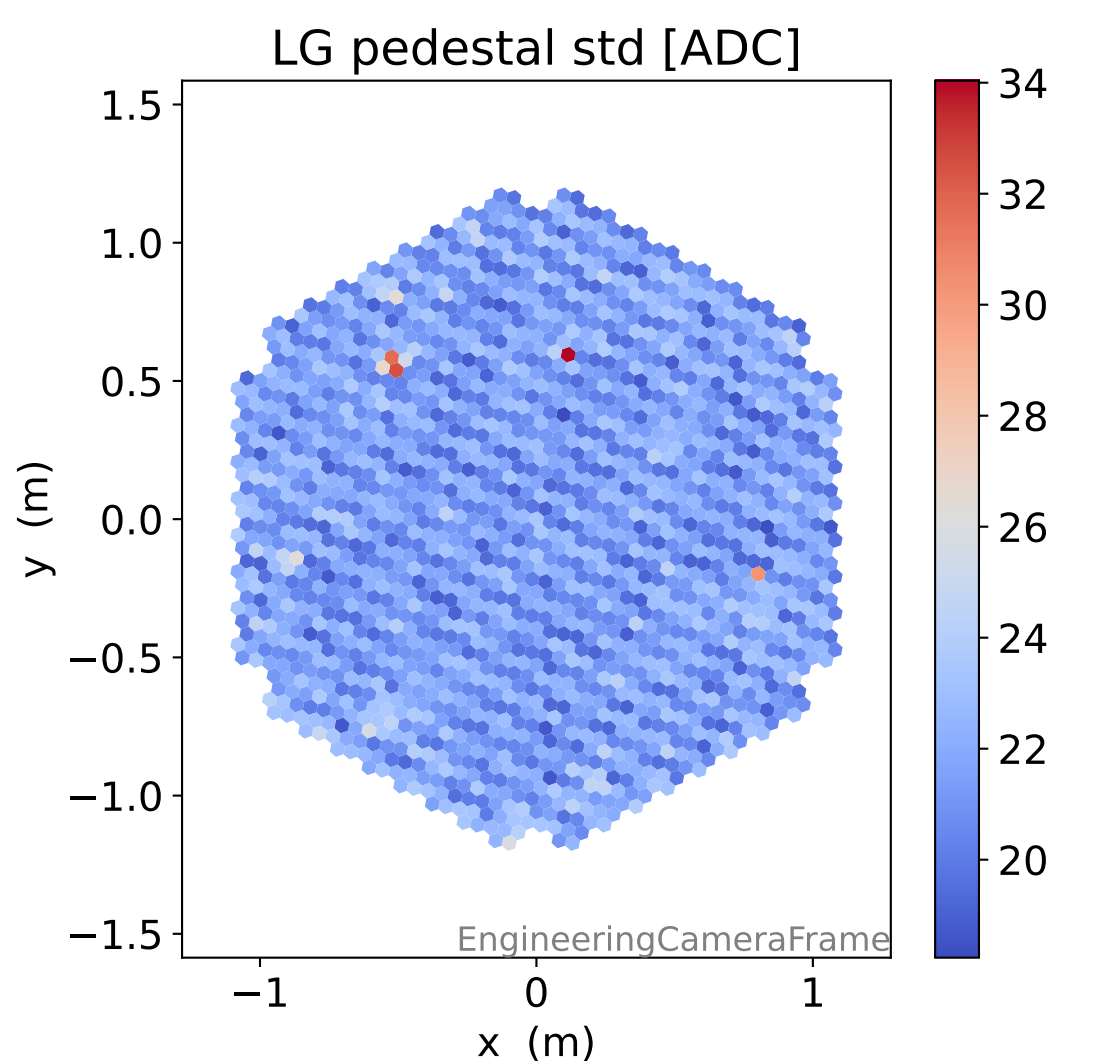
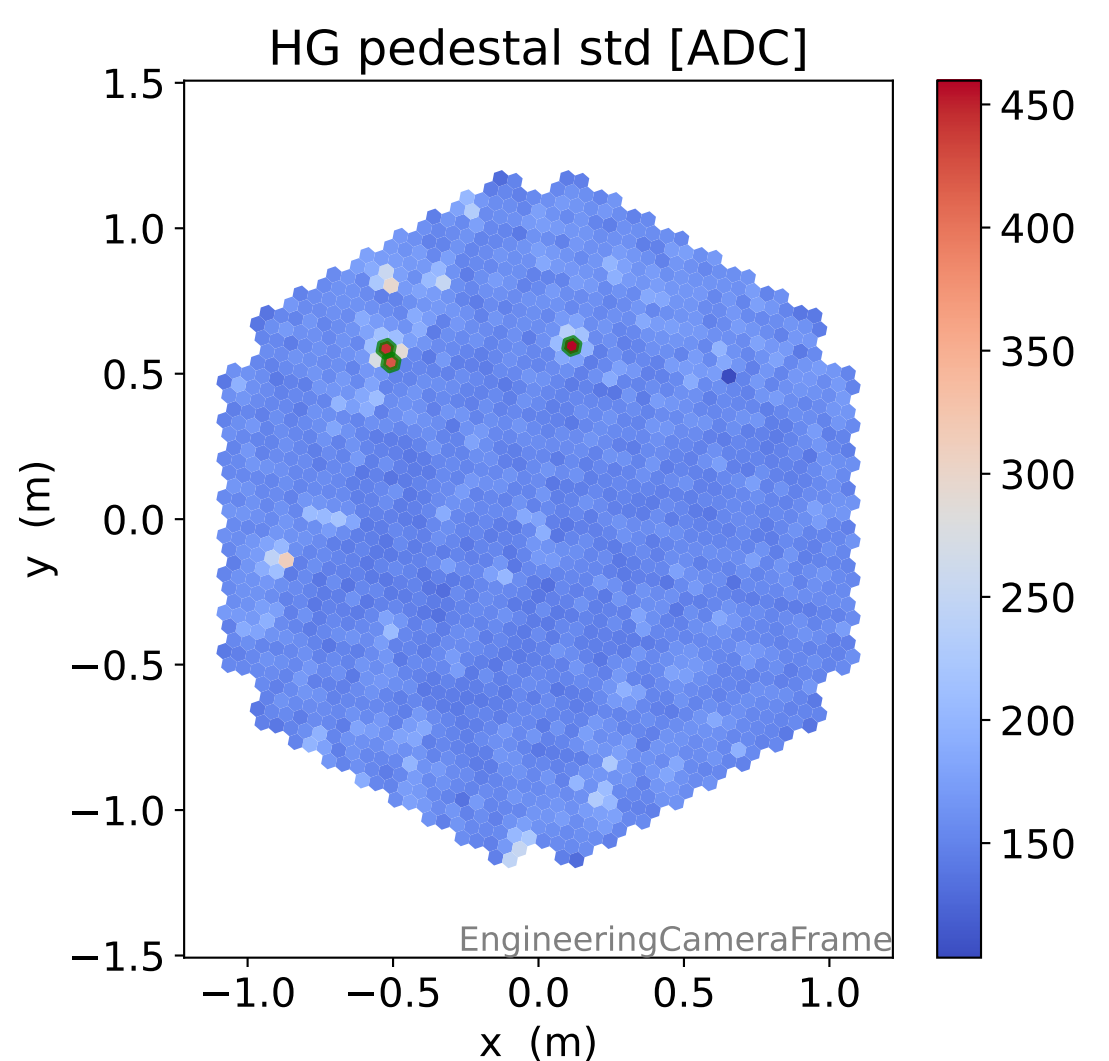
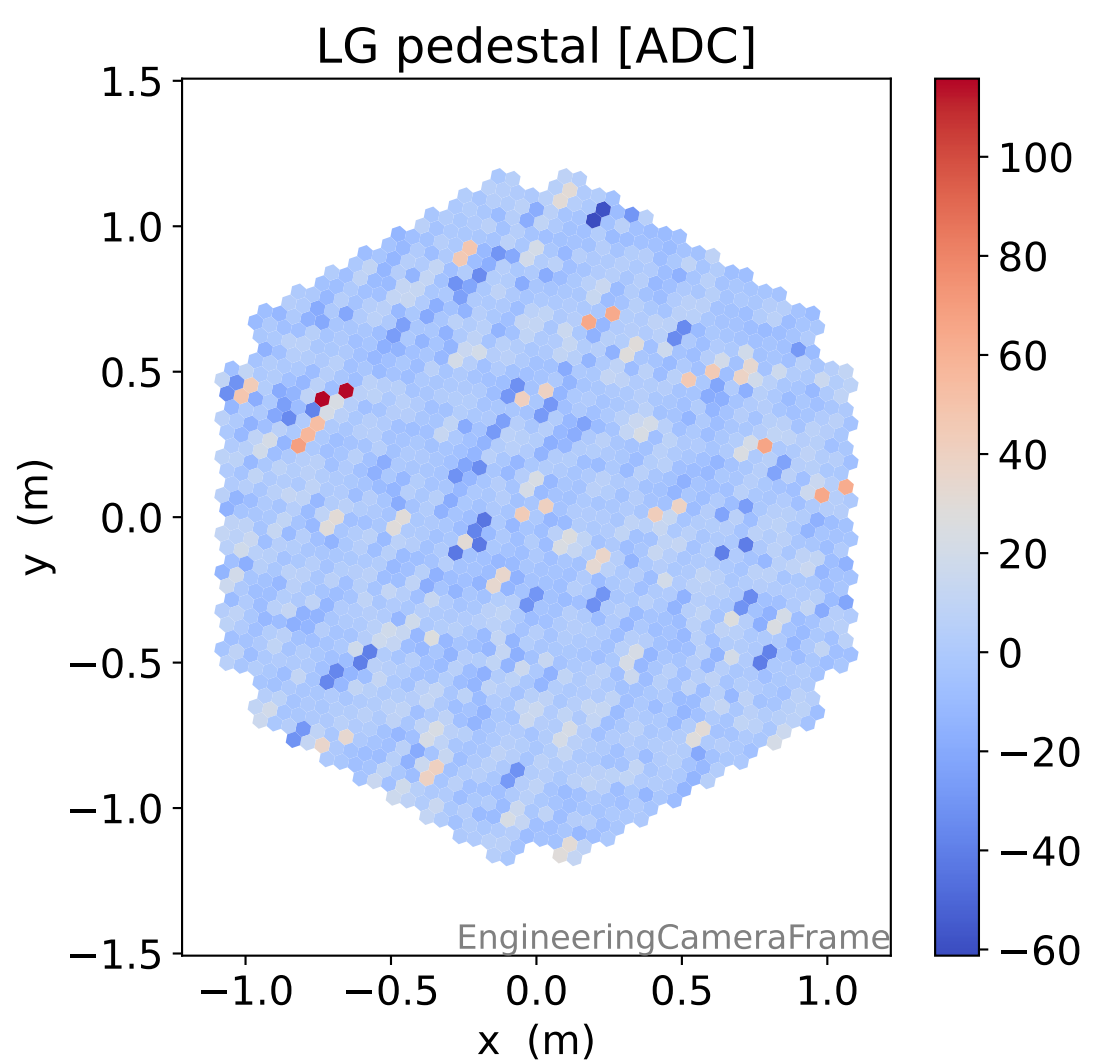
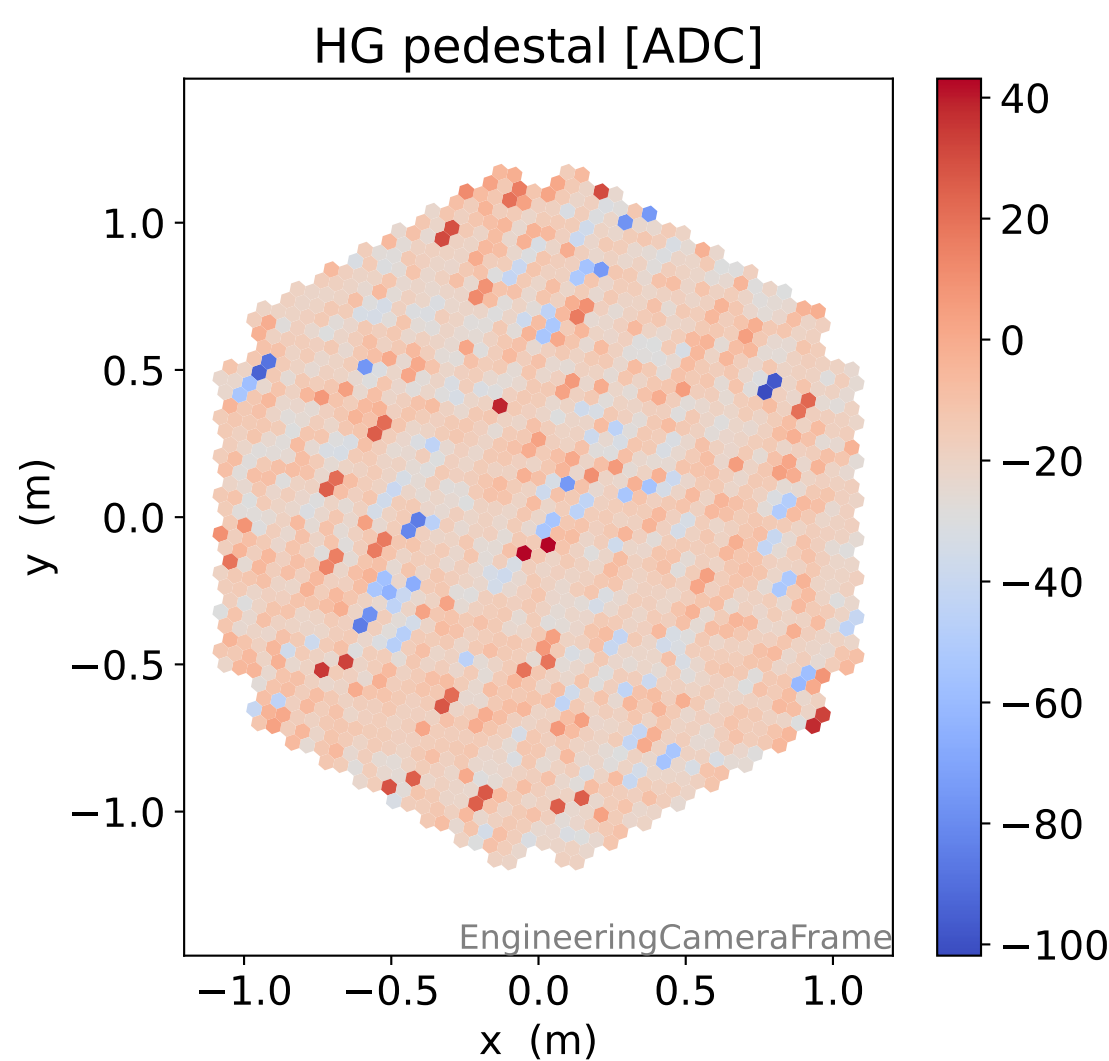
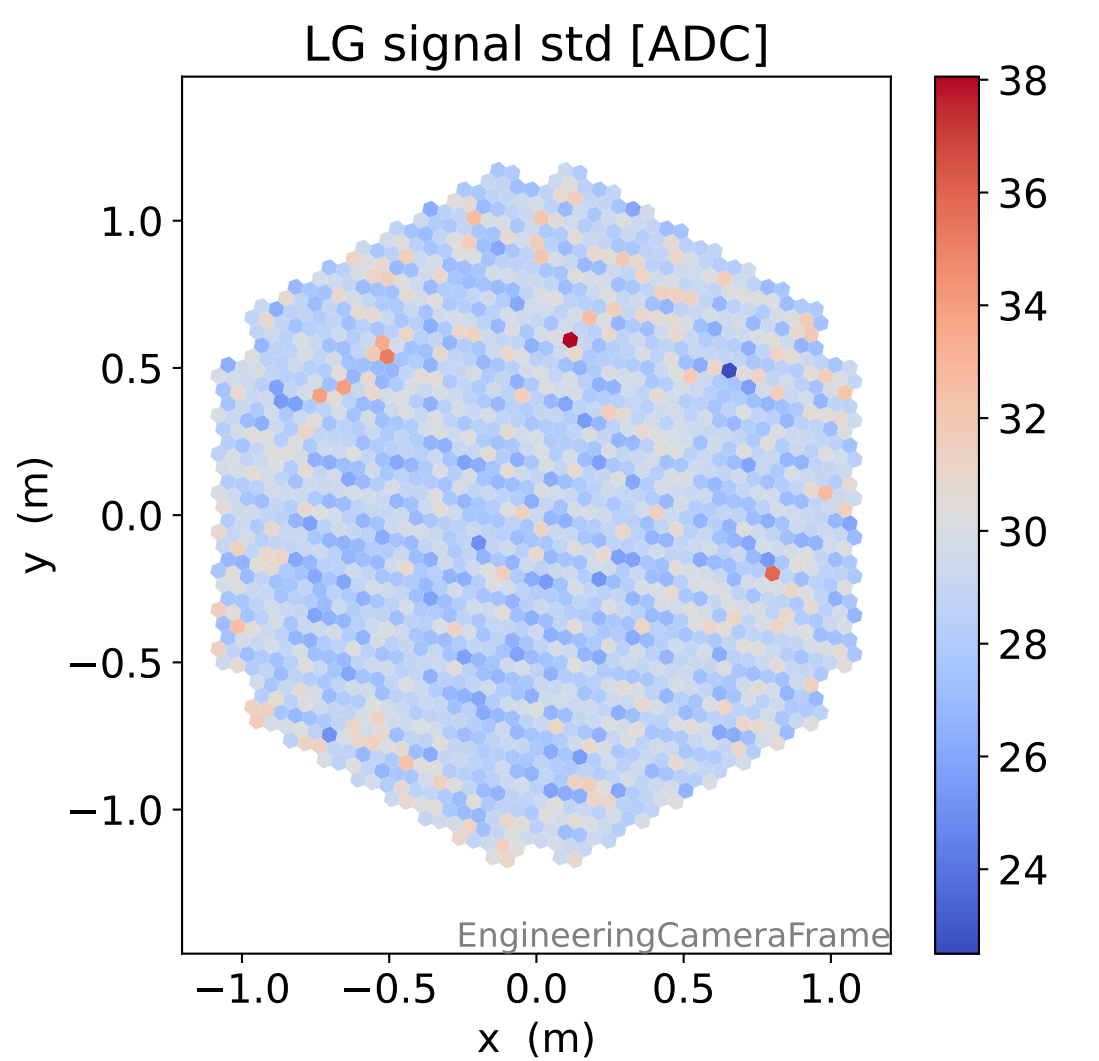
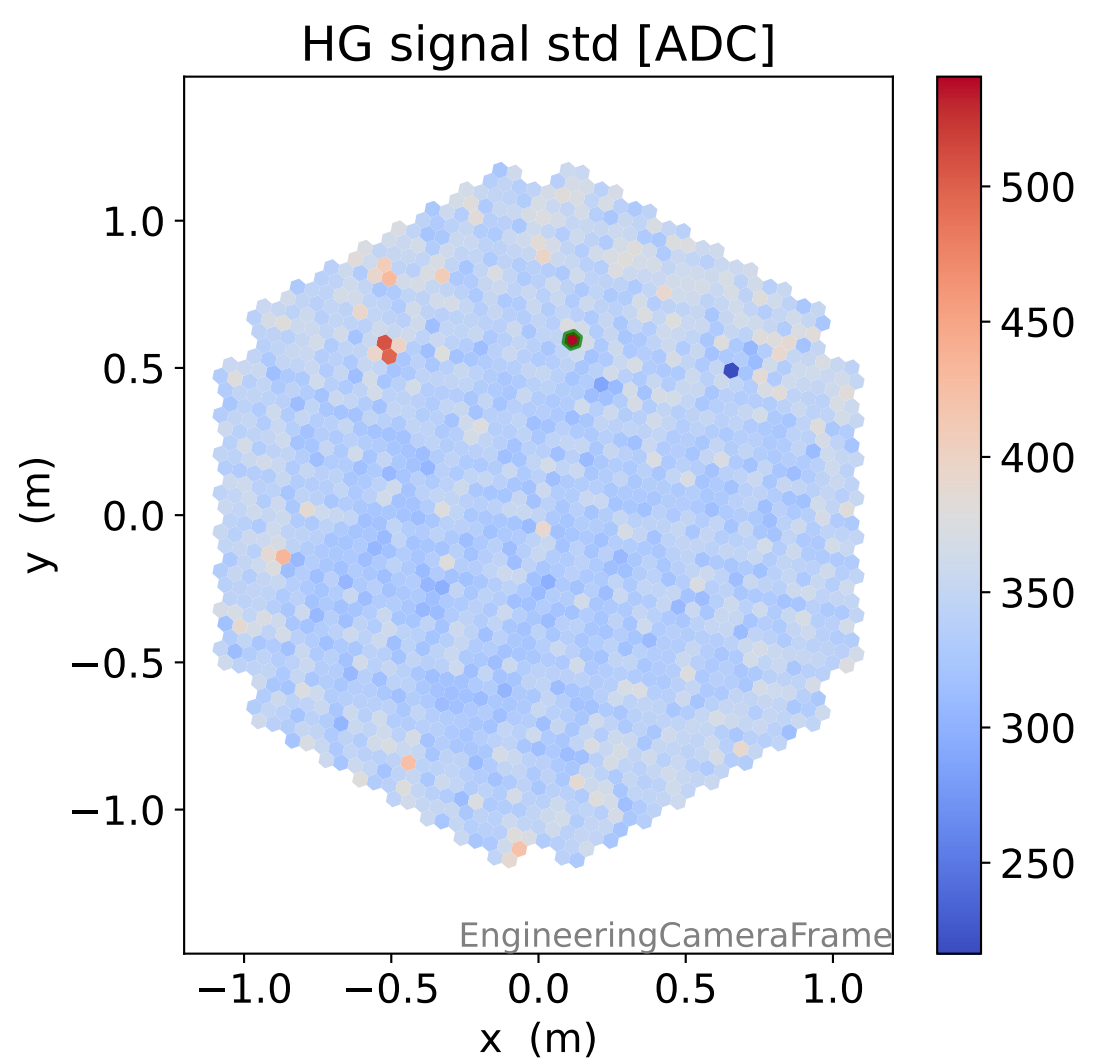
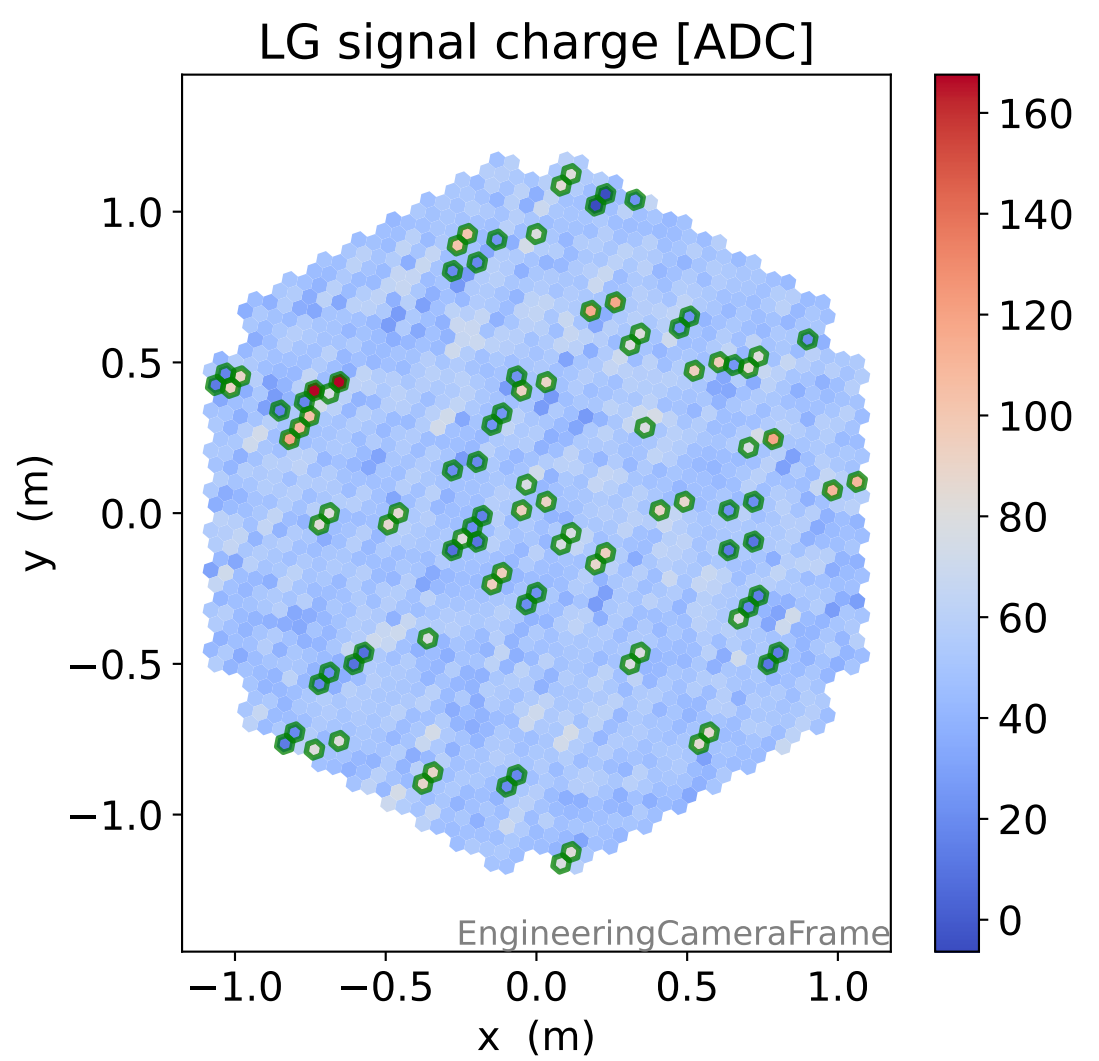
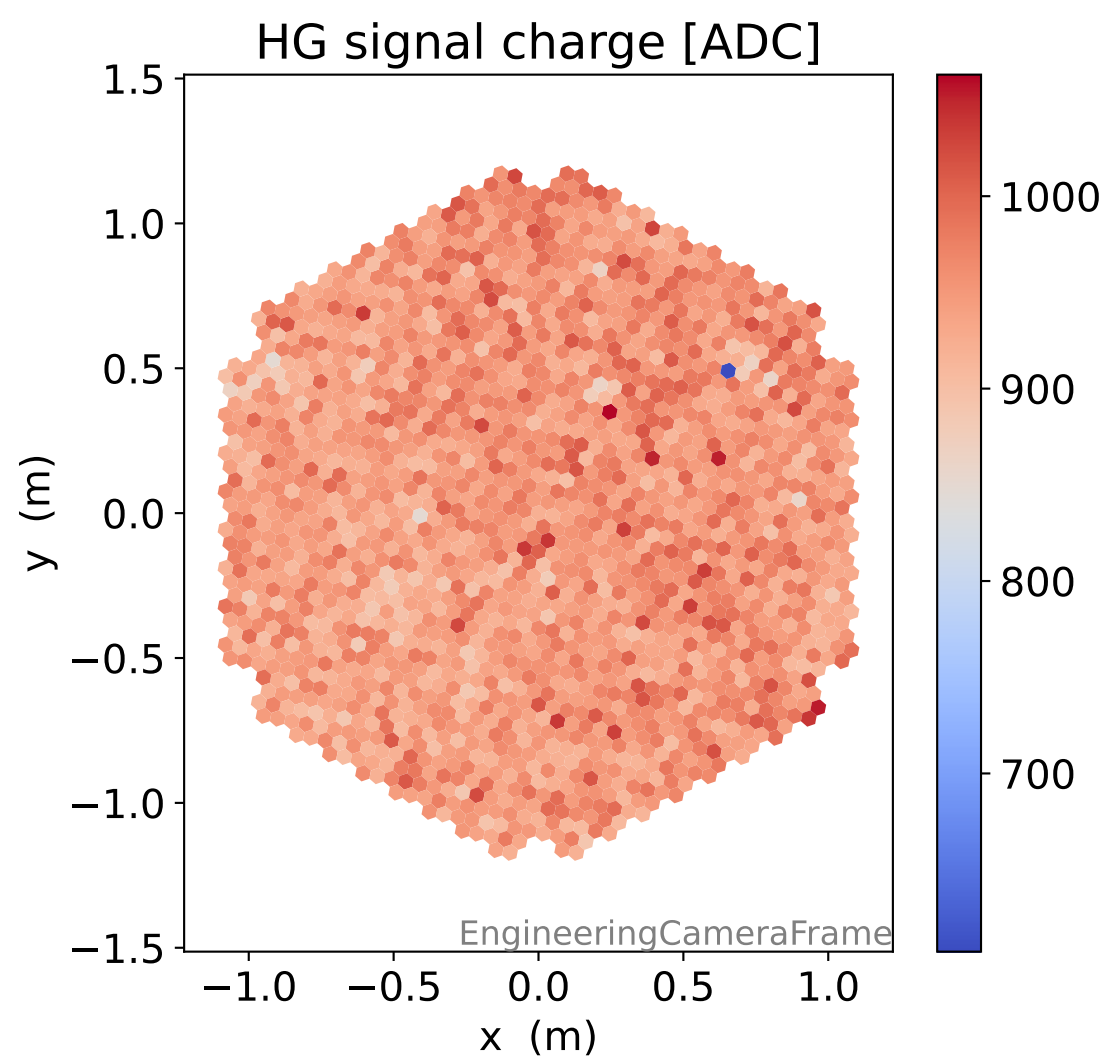
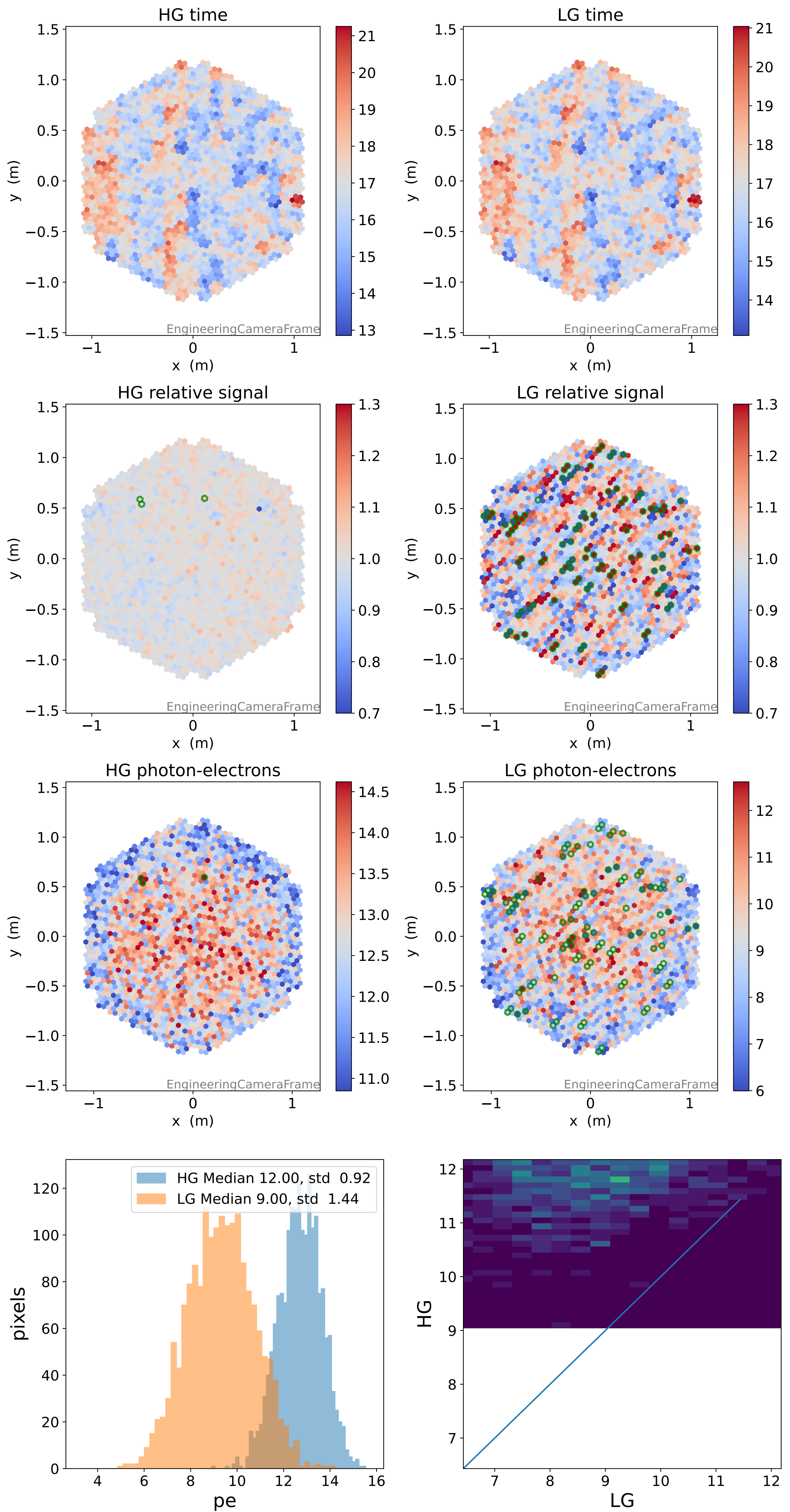


# Run 15300

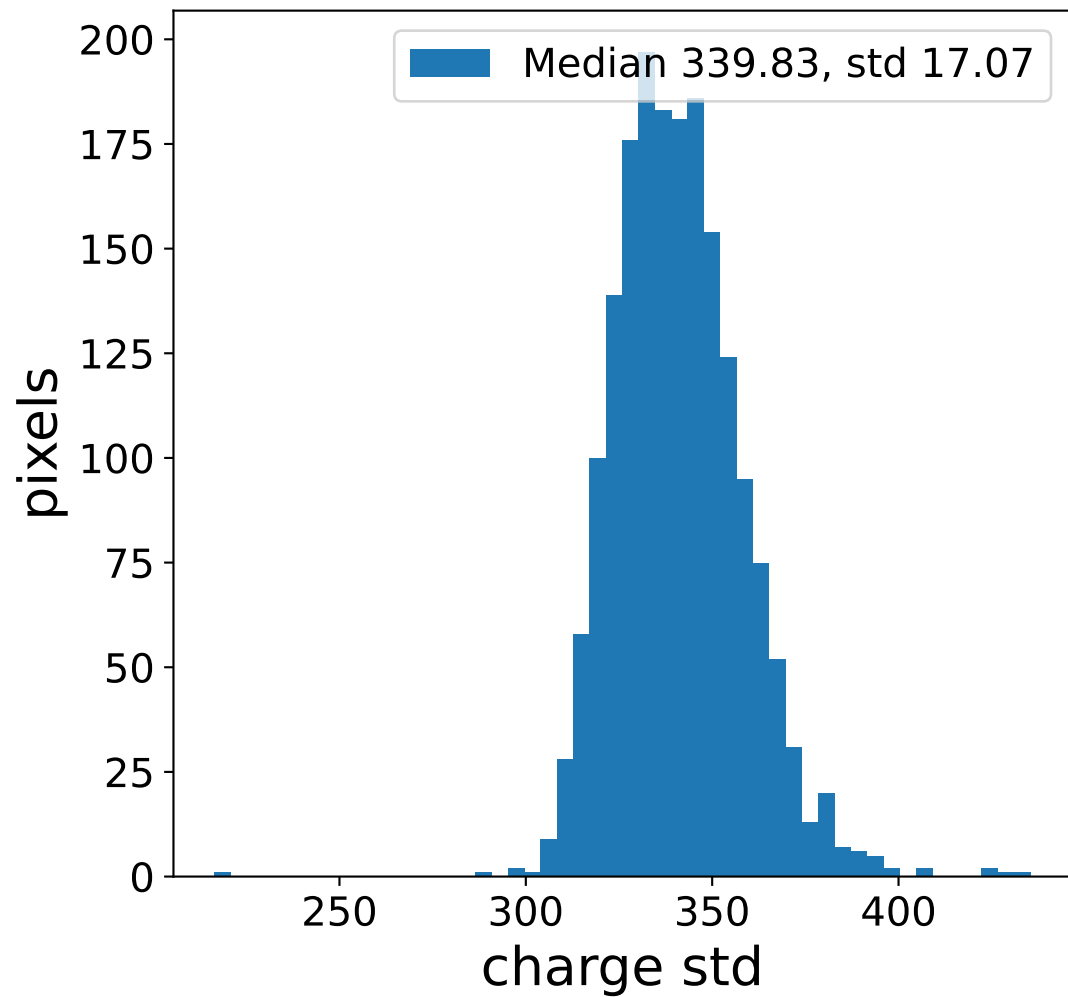
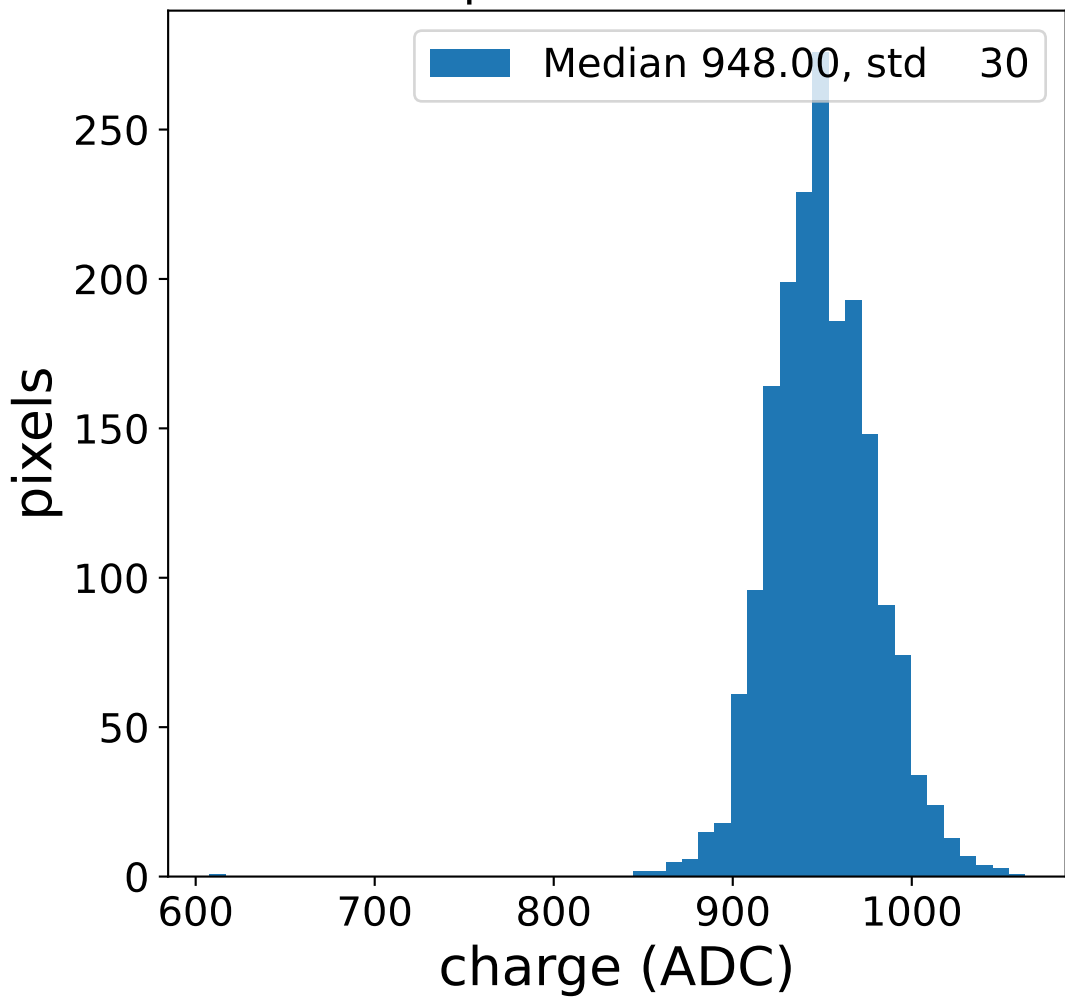


# Run 15300

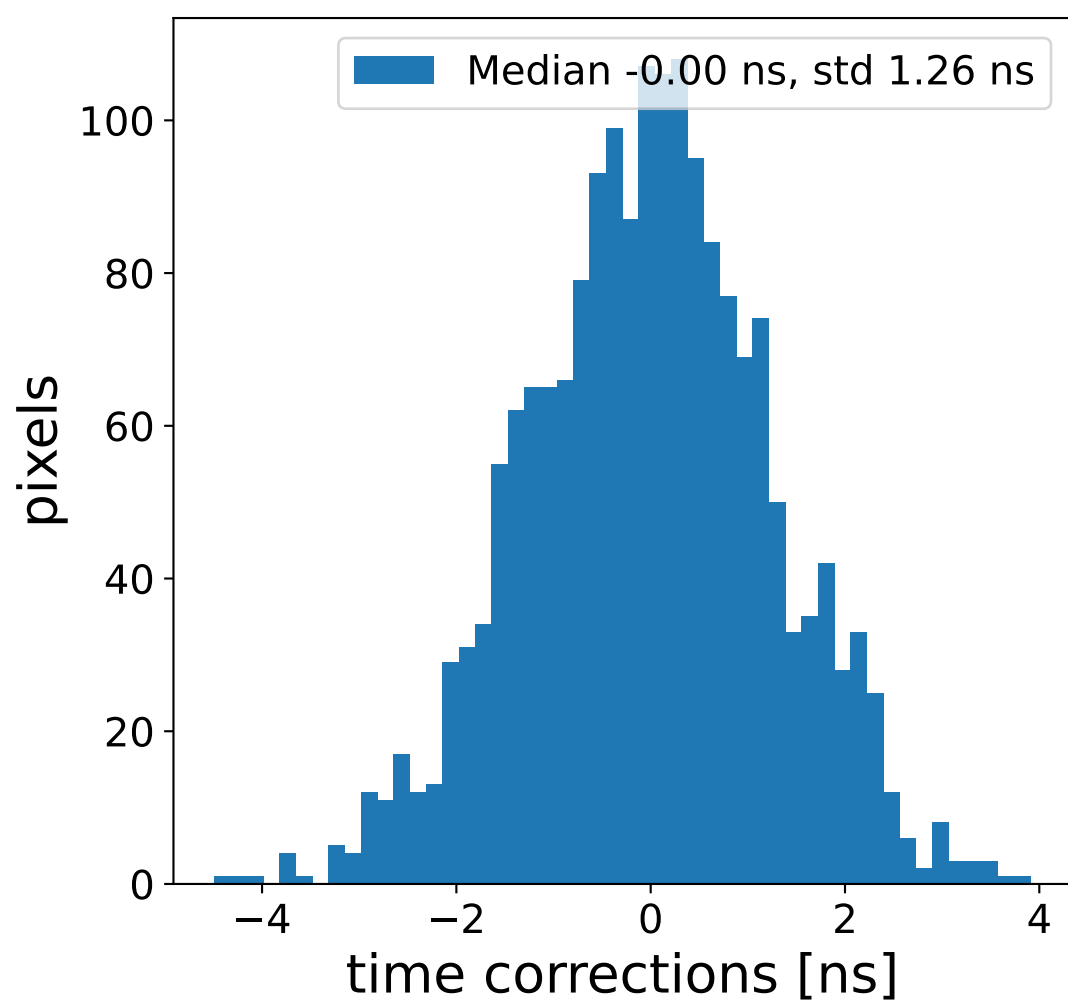
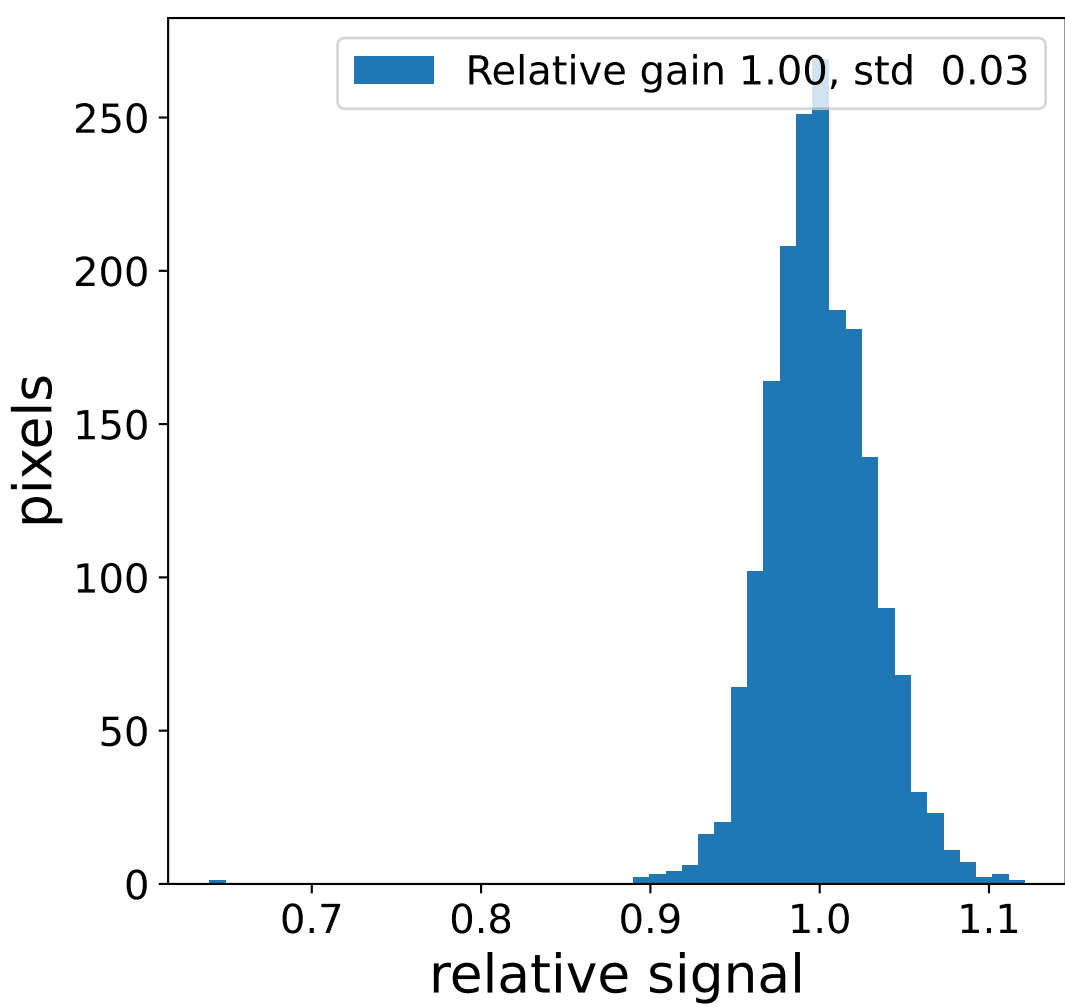
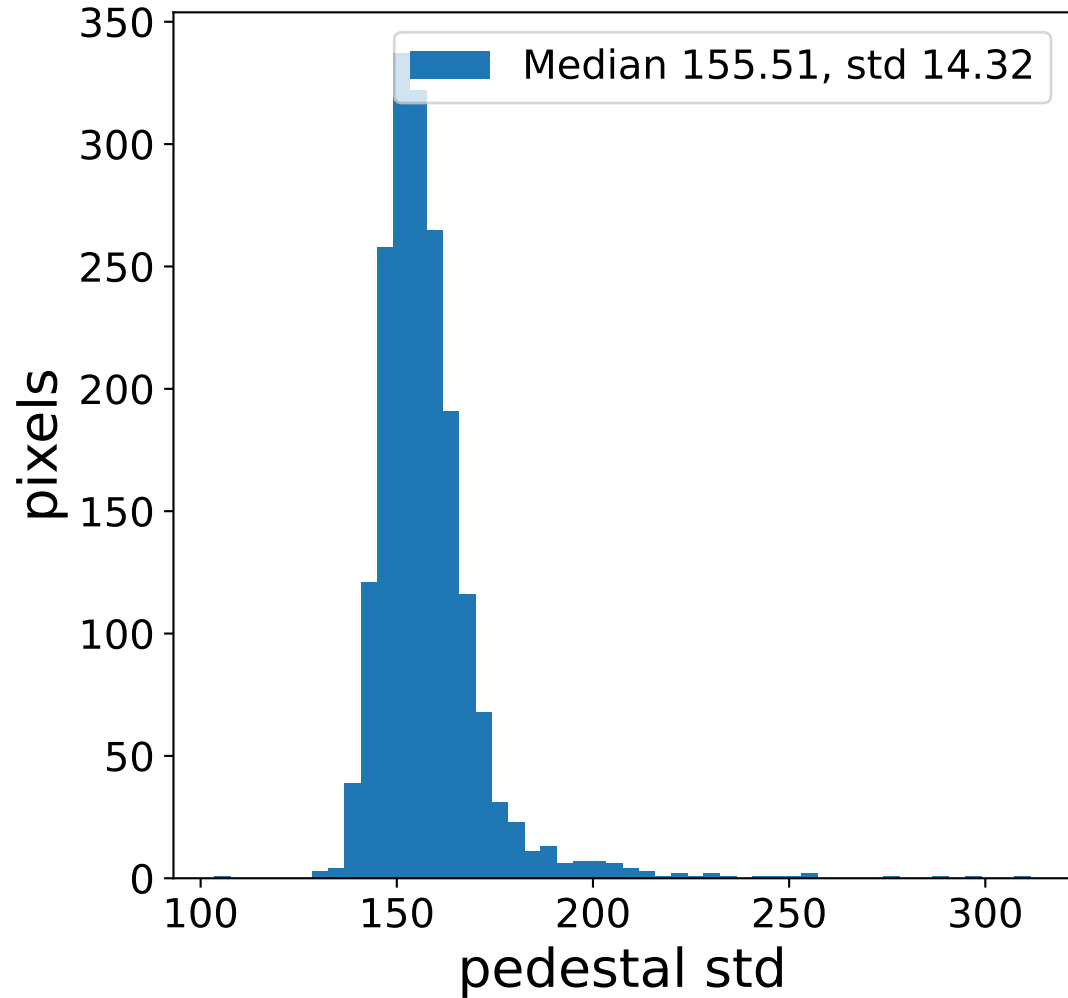
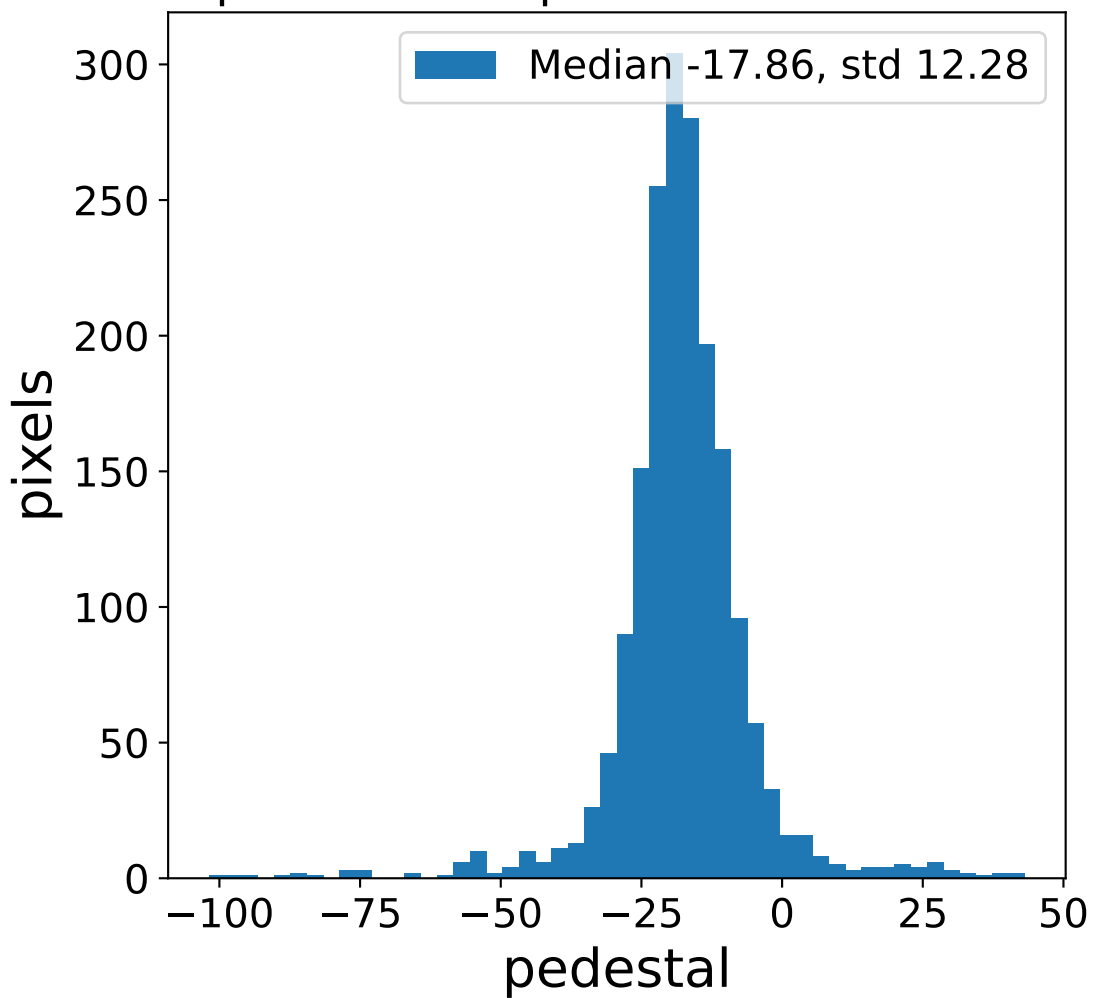


# Run 15300 channel: HG

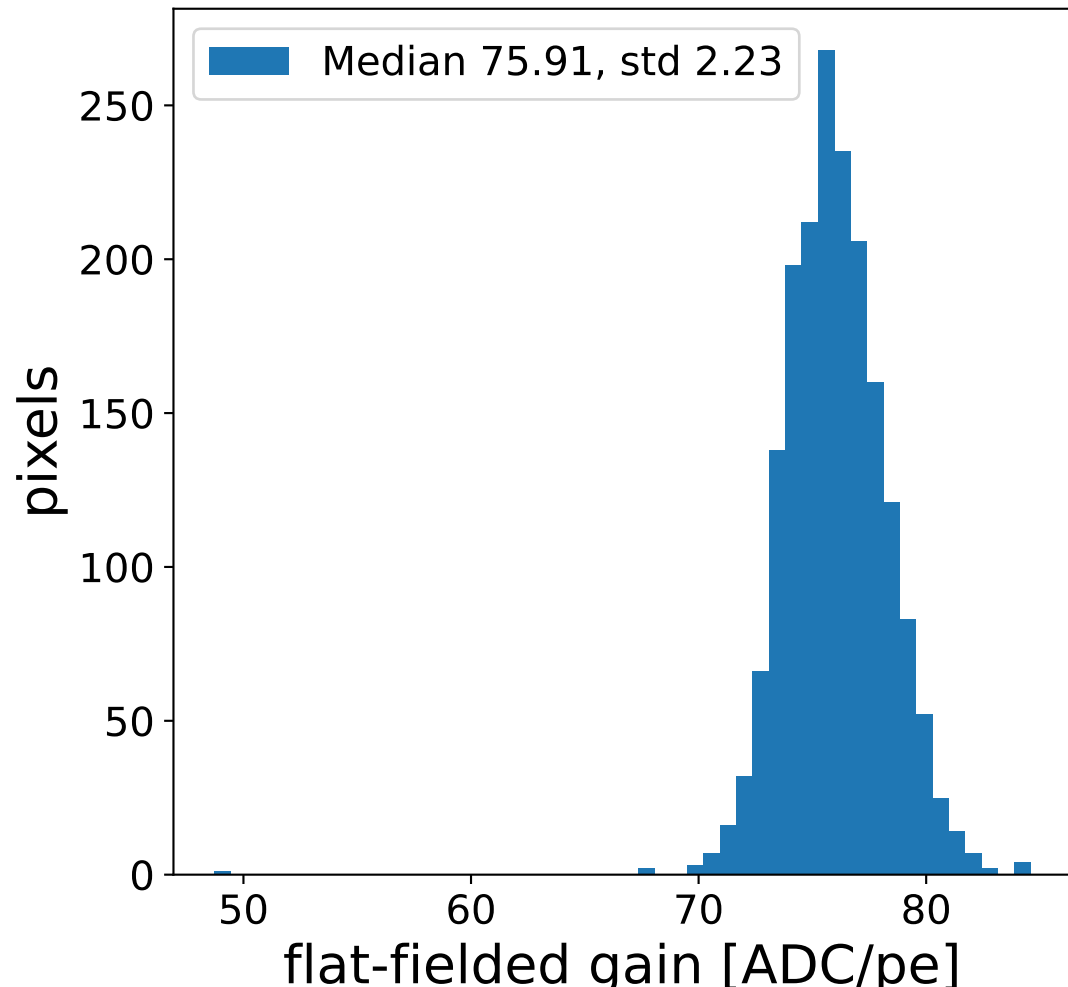
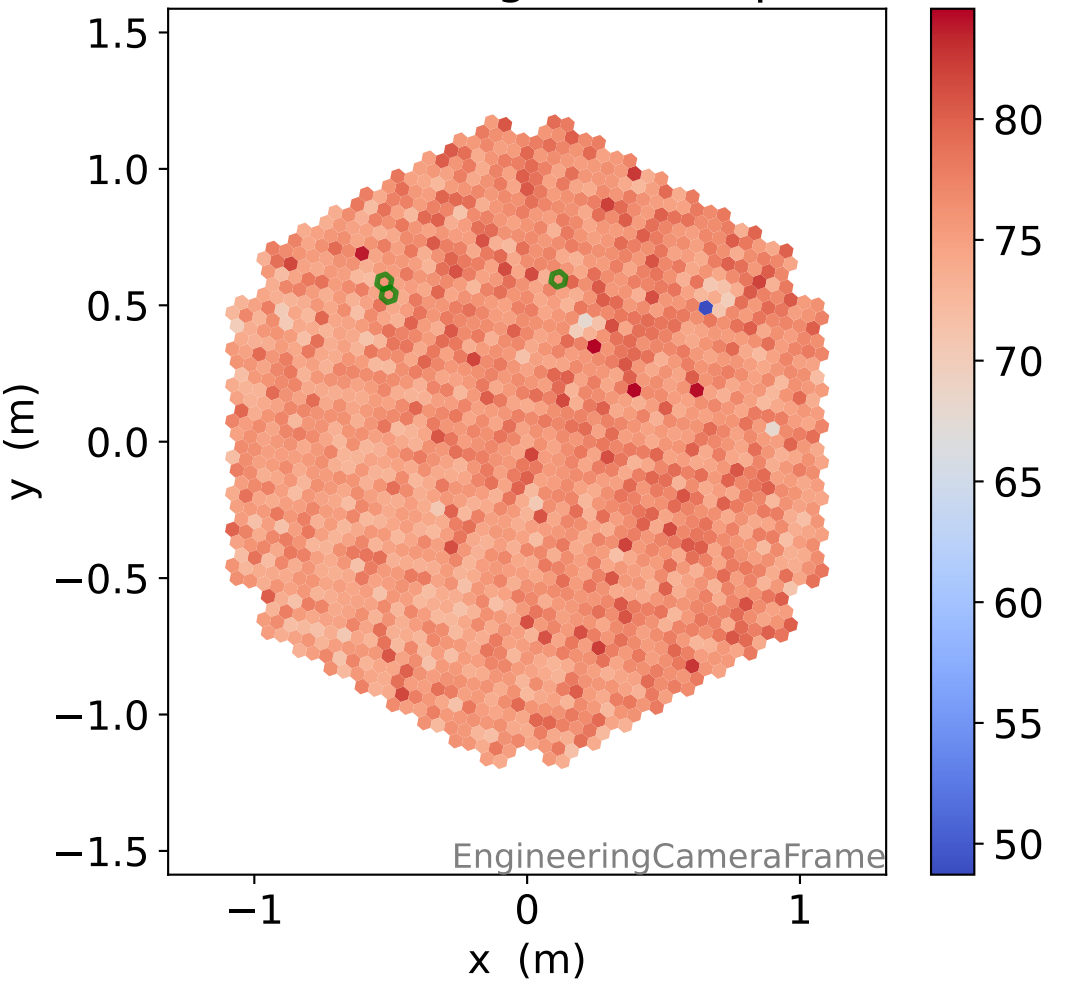
### FF sample of 10000 events



### pedestal sample of 10000 events

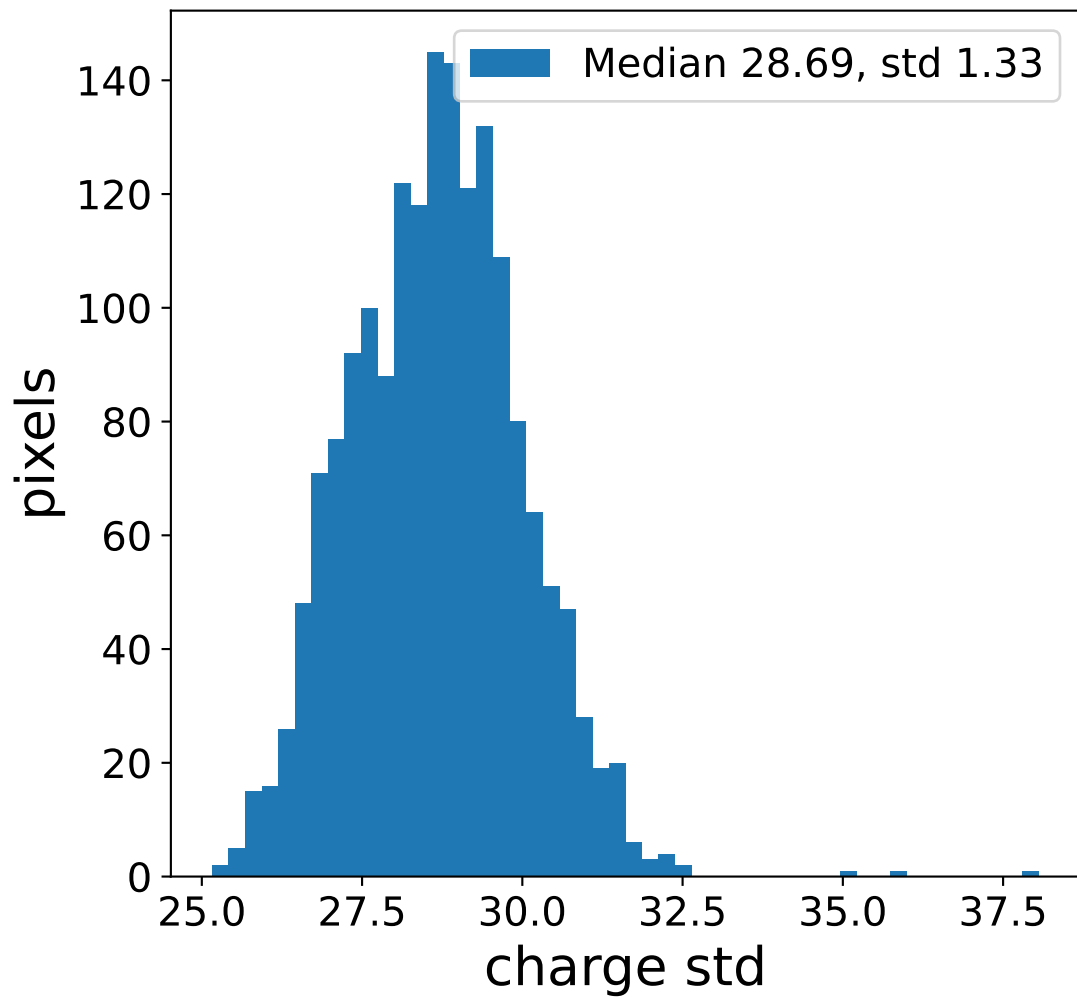
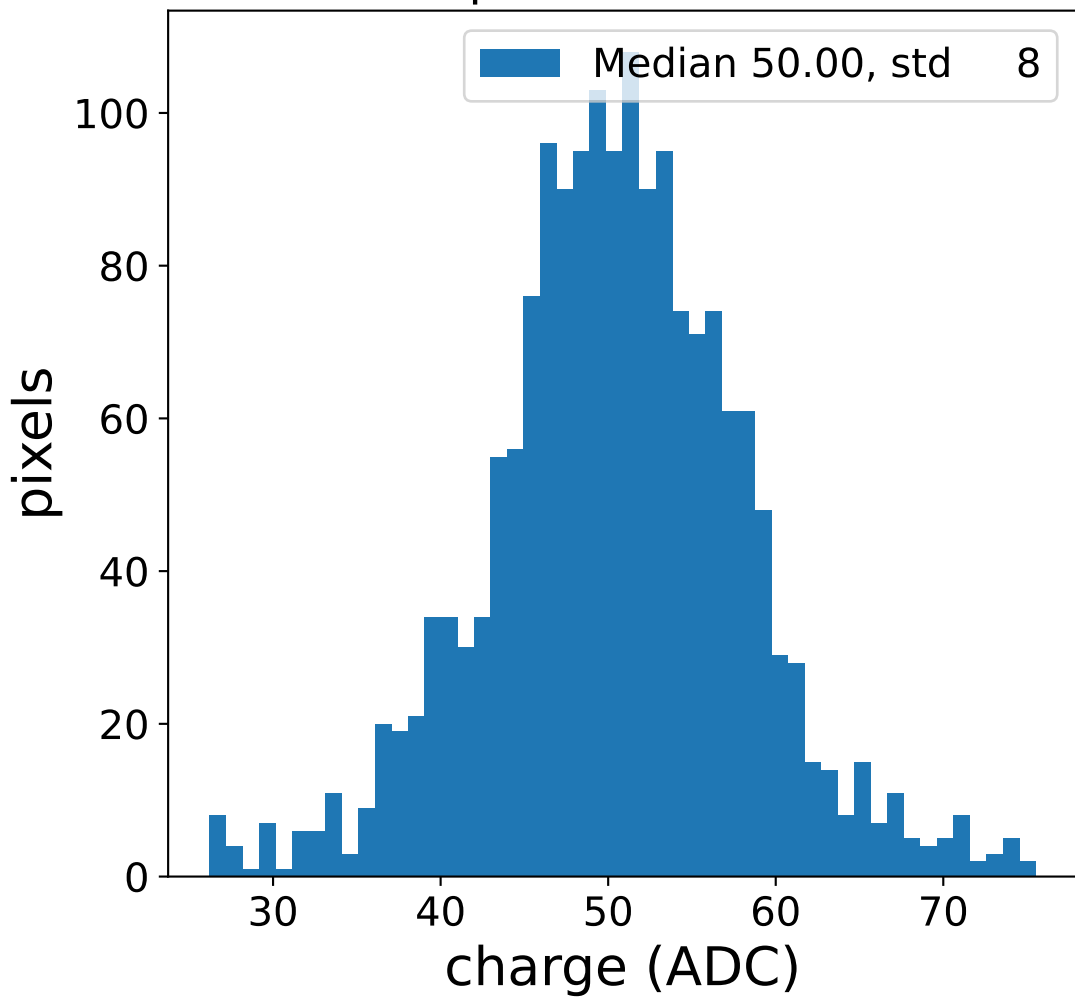


### flat-fielded gain [ADC/pe]

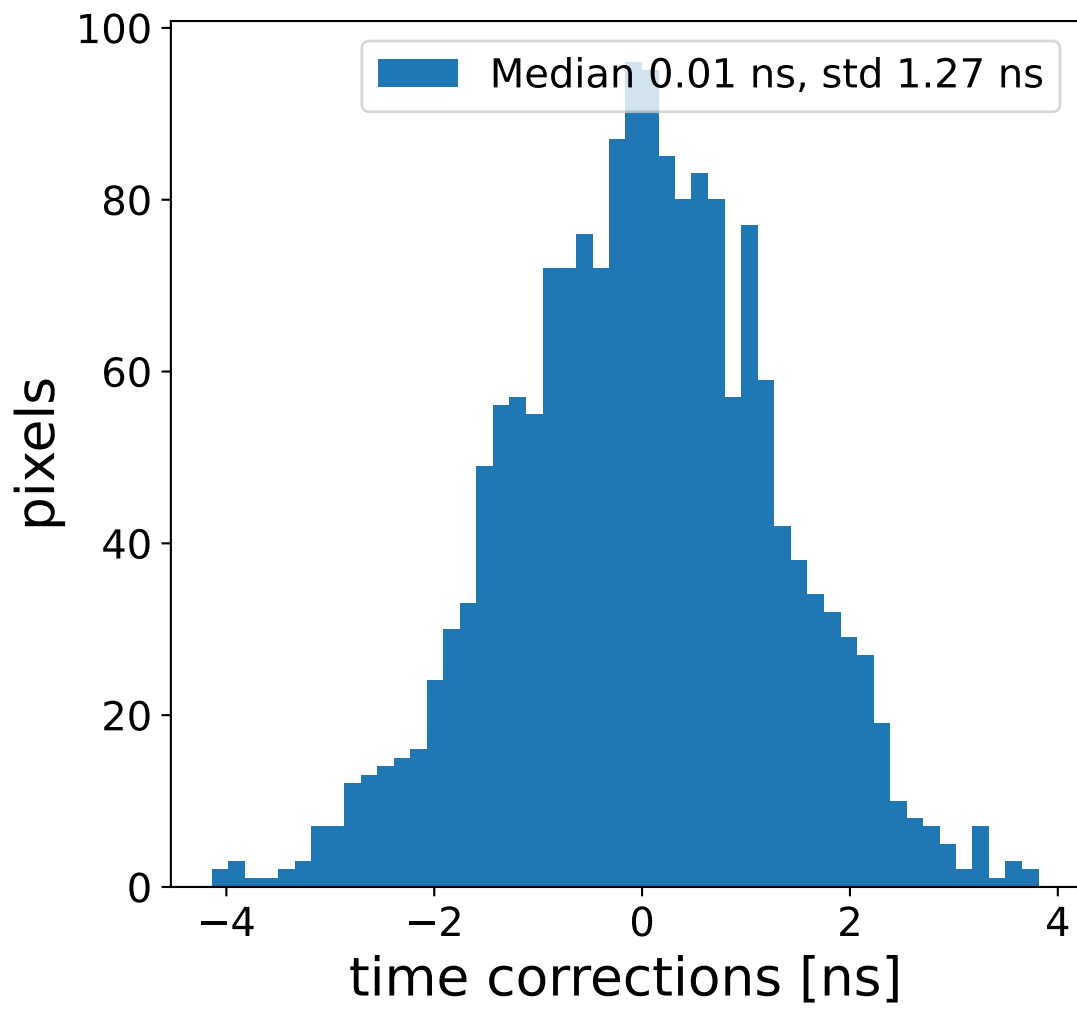
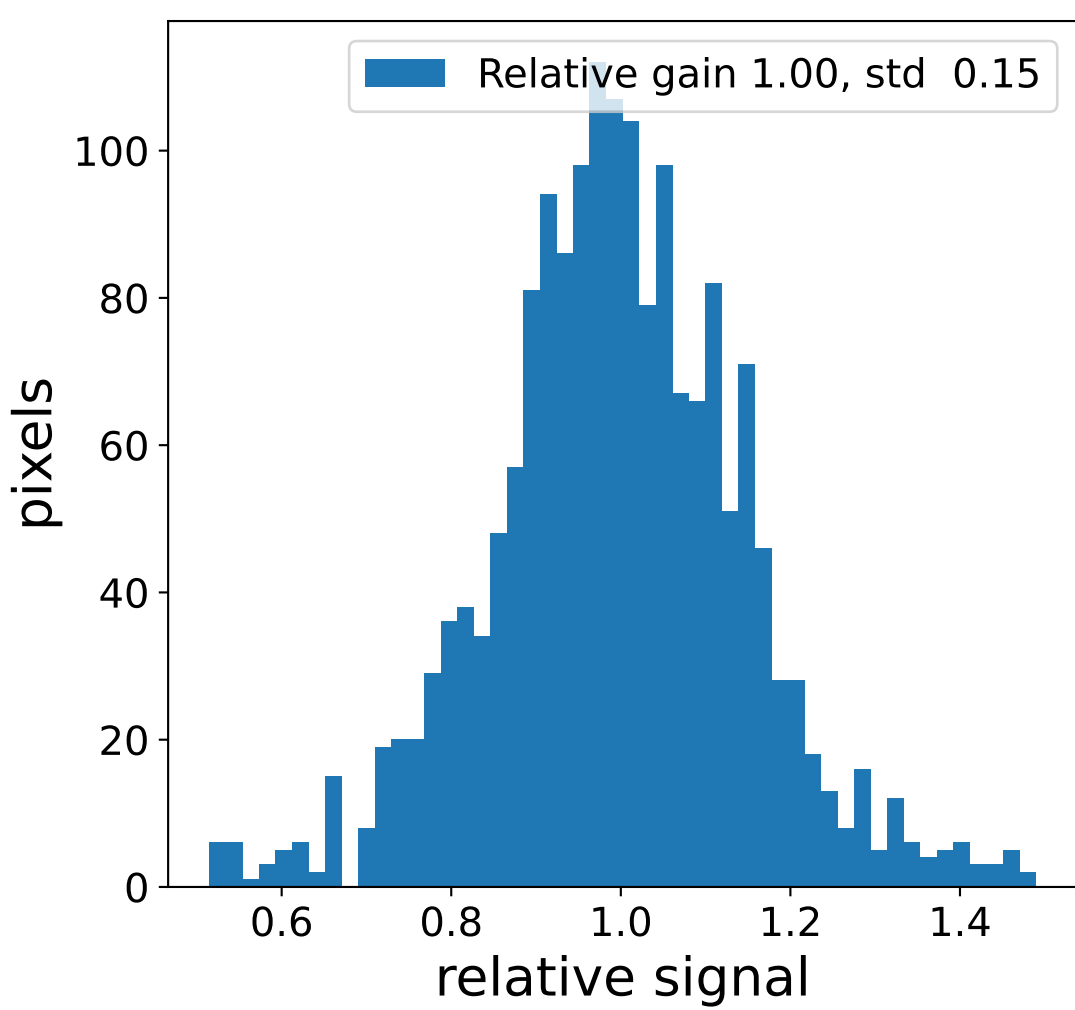
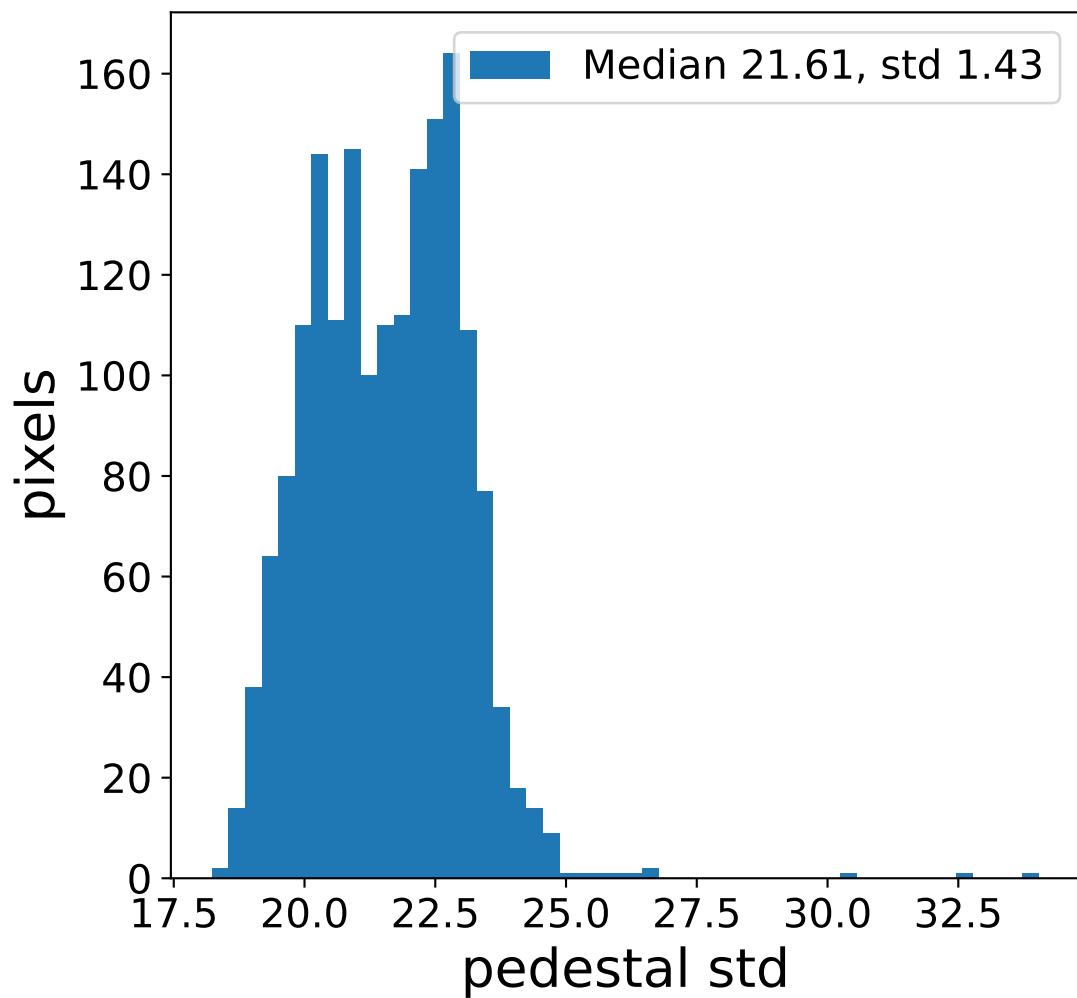
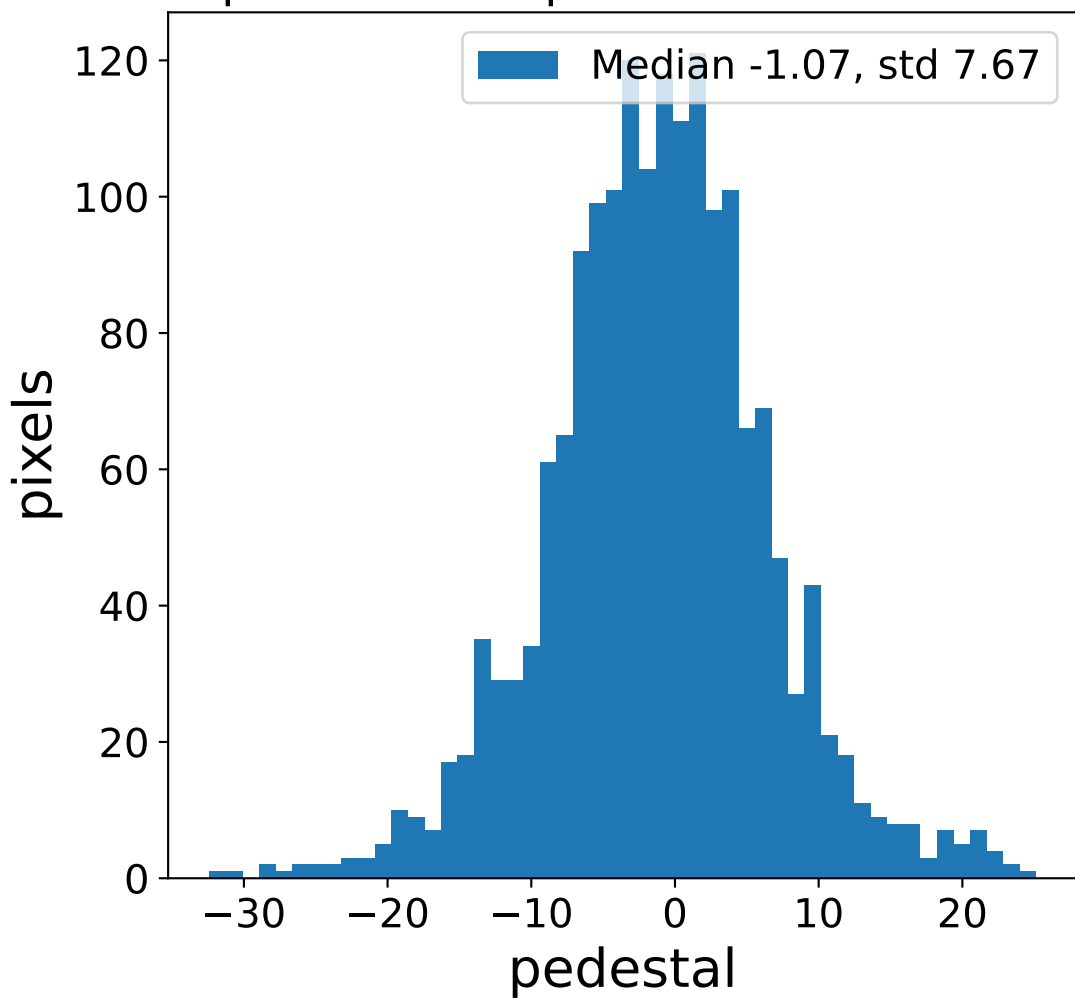


# Run 15300 channel: LG

## FF sample of 10000 events



## pedestal sample of 10000 events



## flat-fielded gain [ADC/pe]

