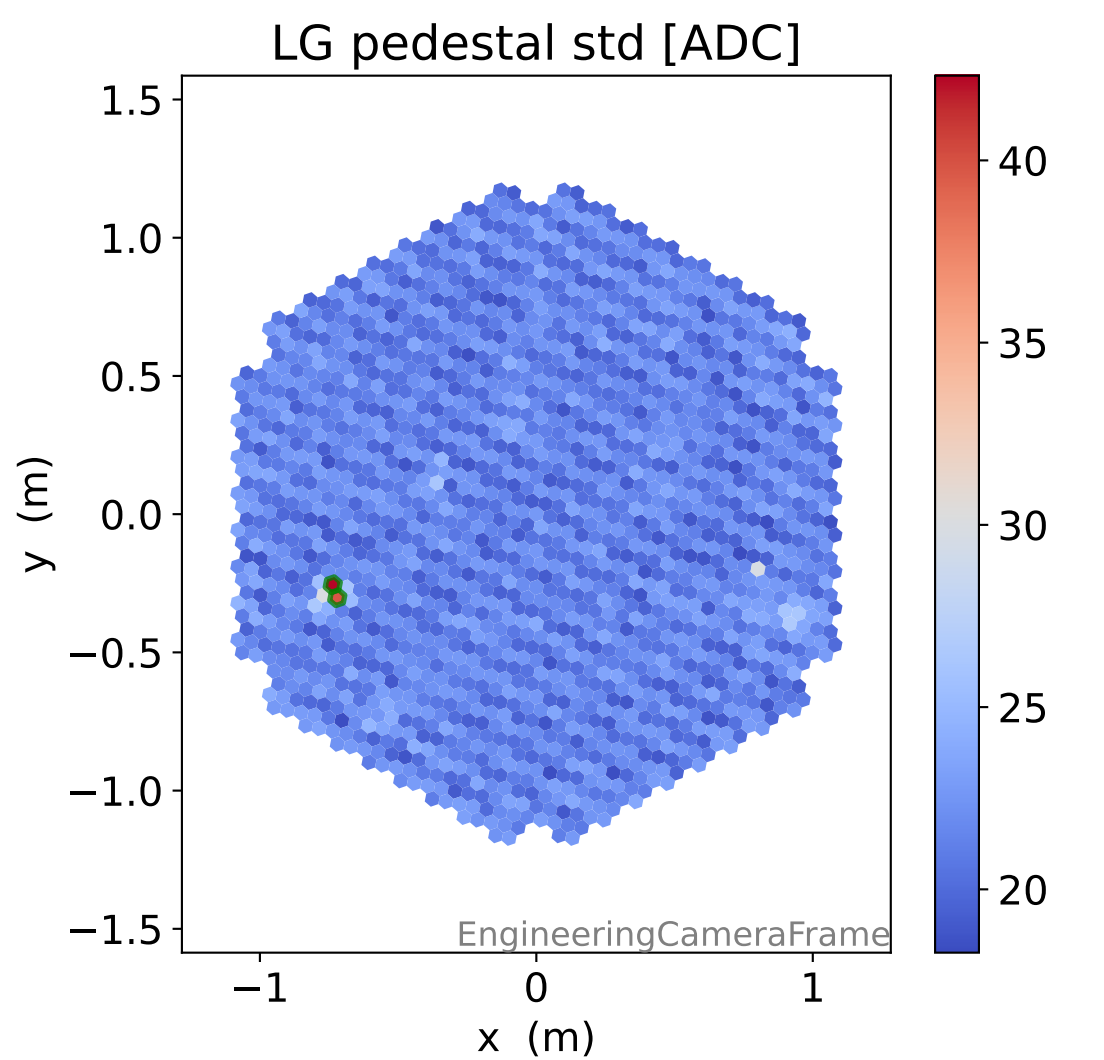
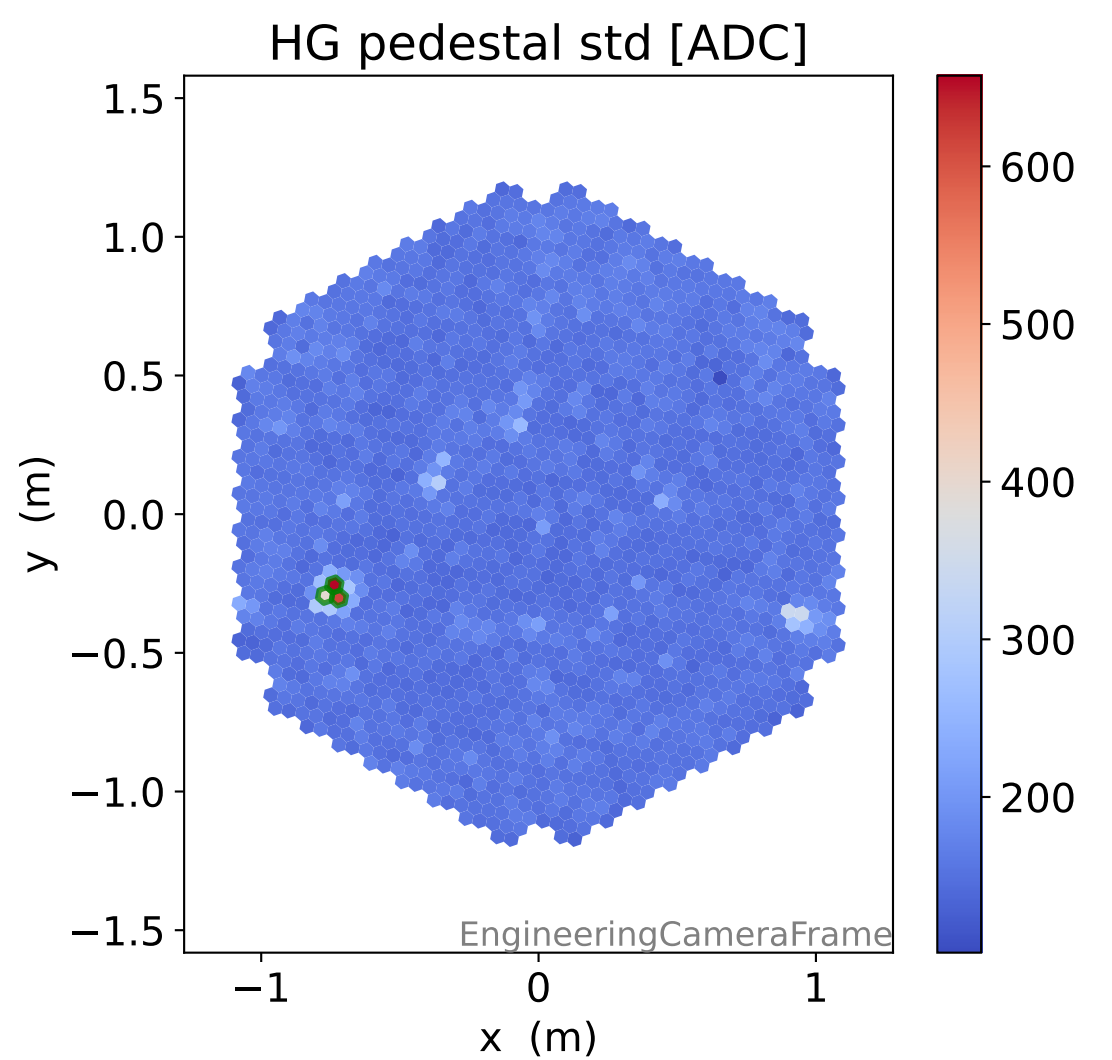
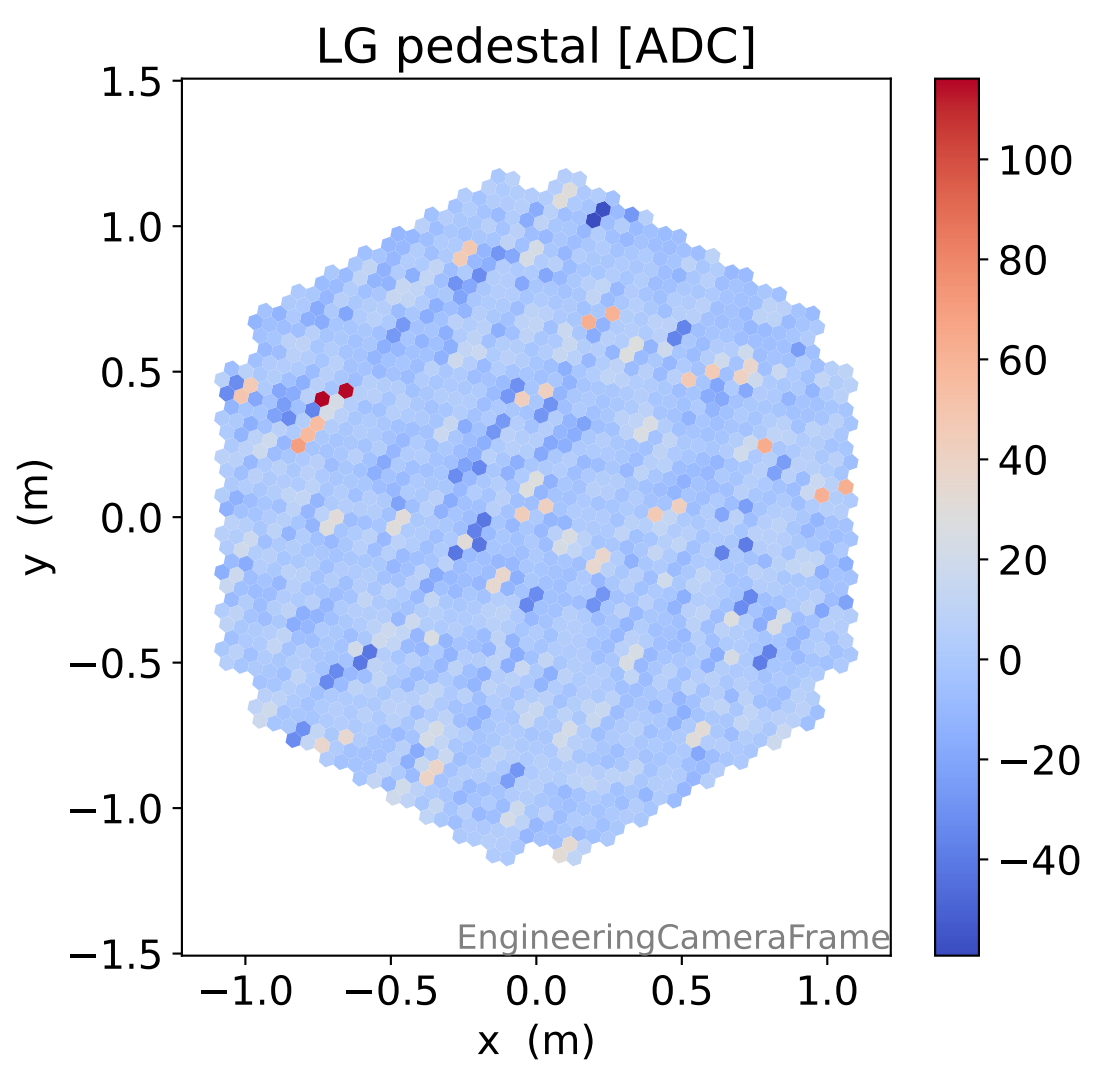
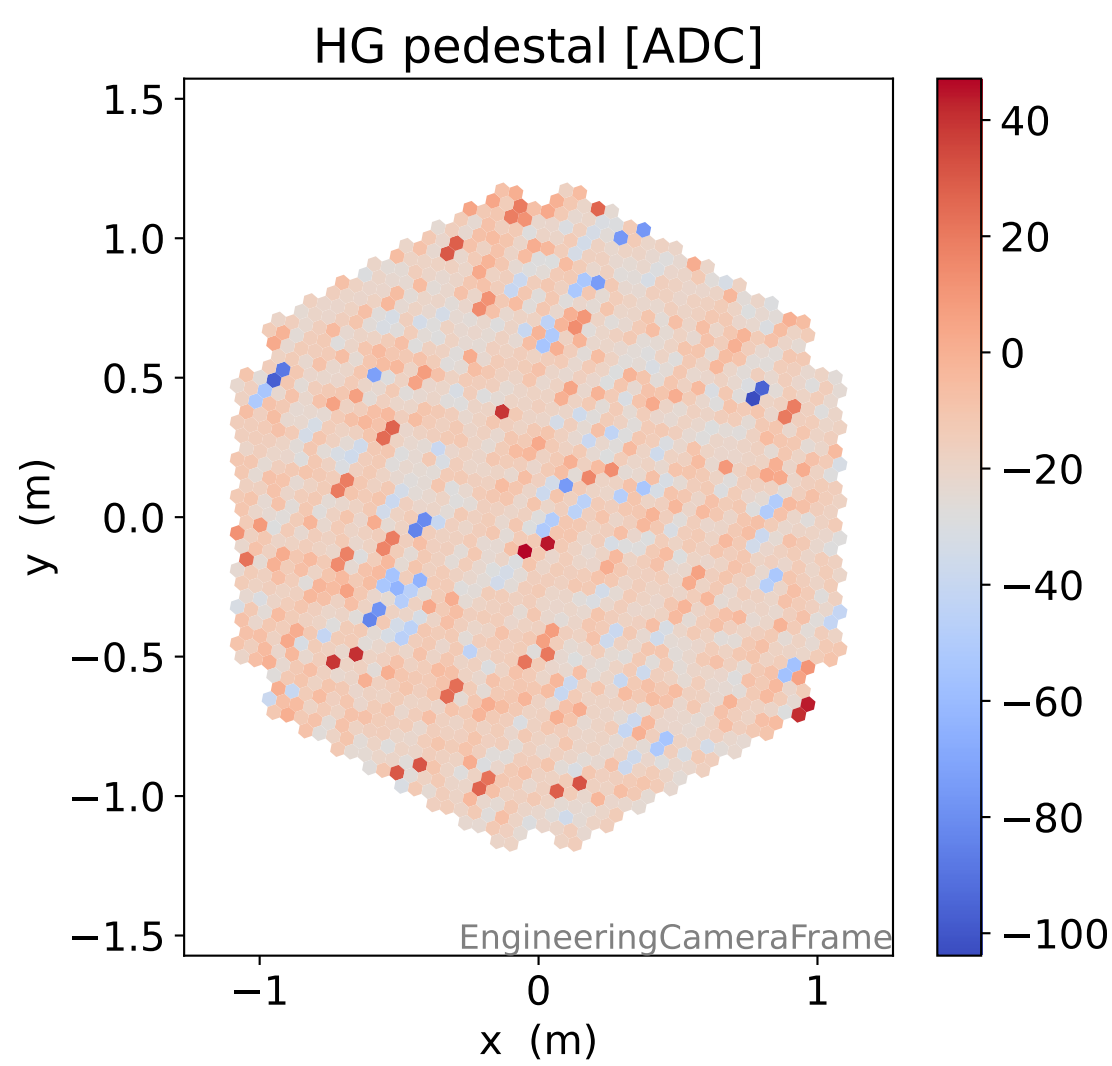
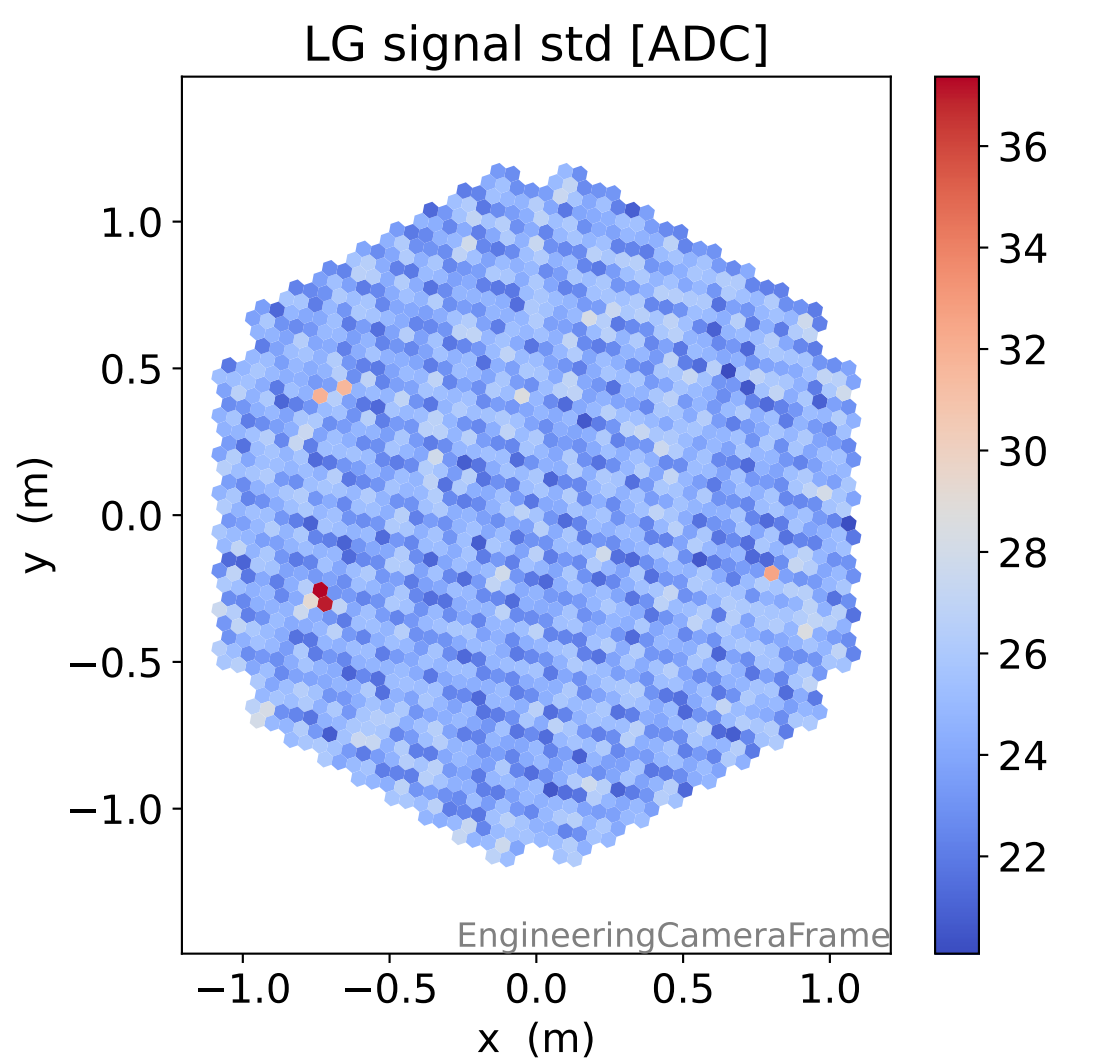
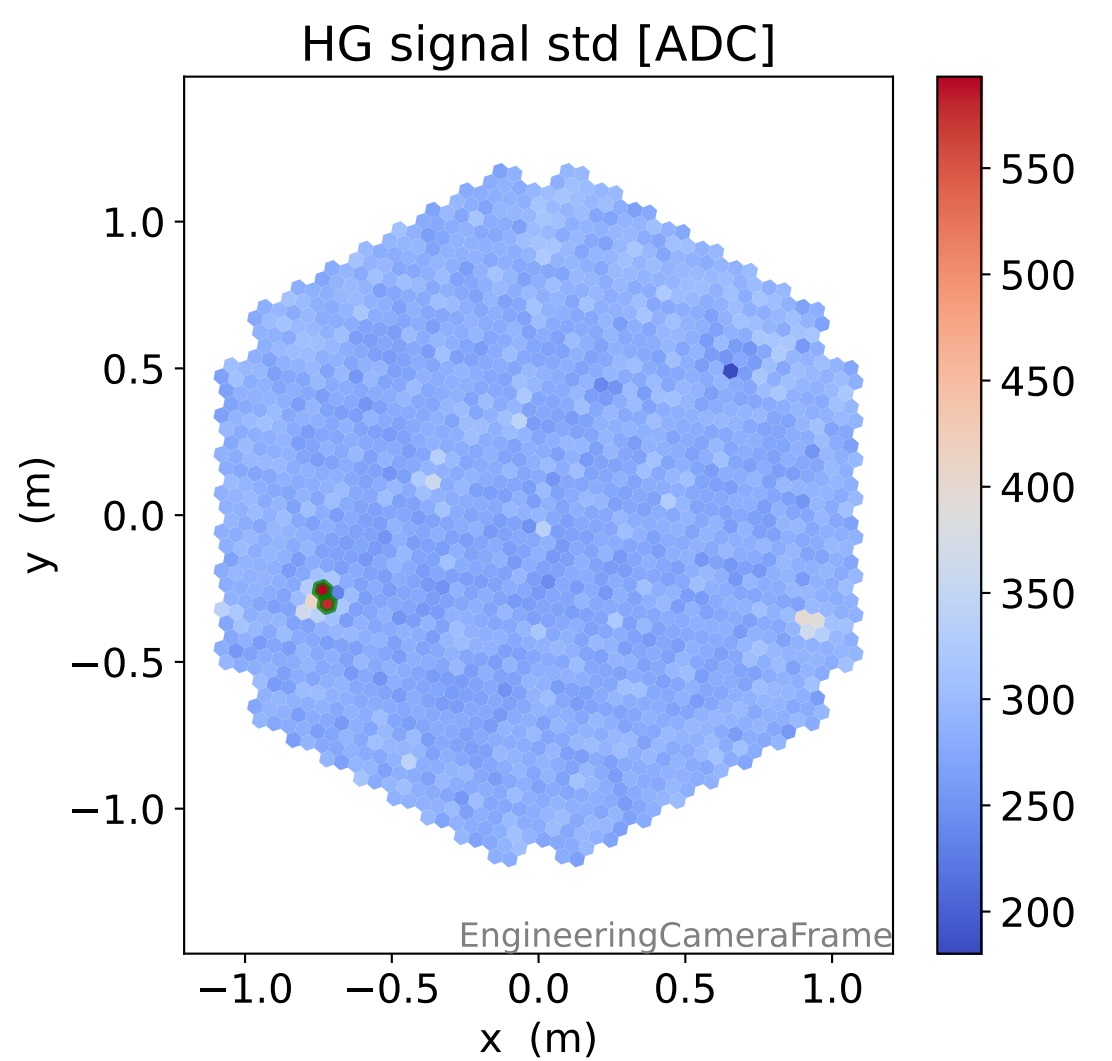
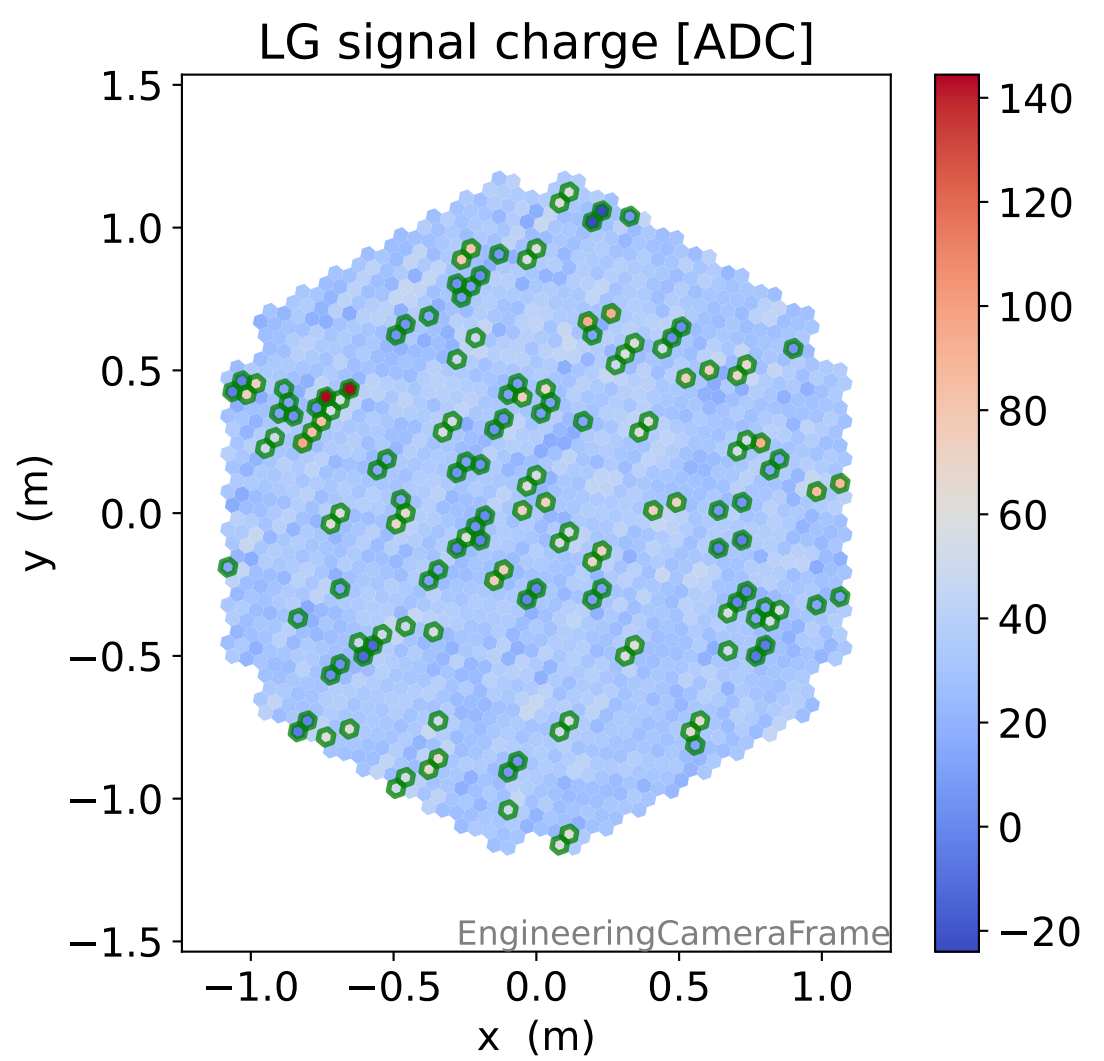
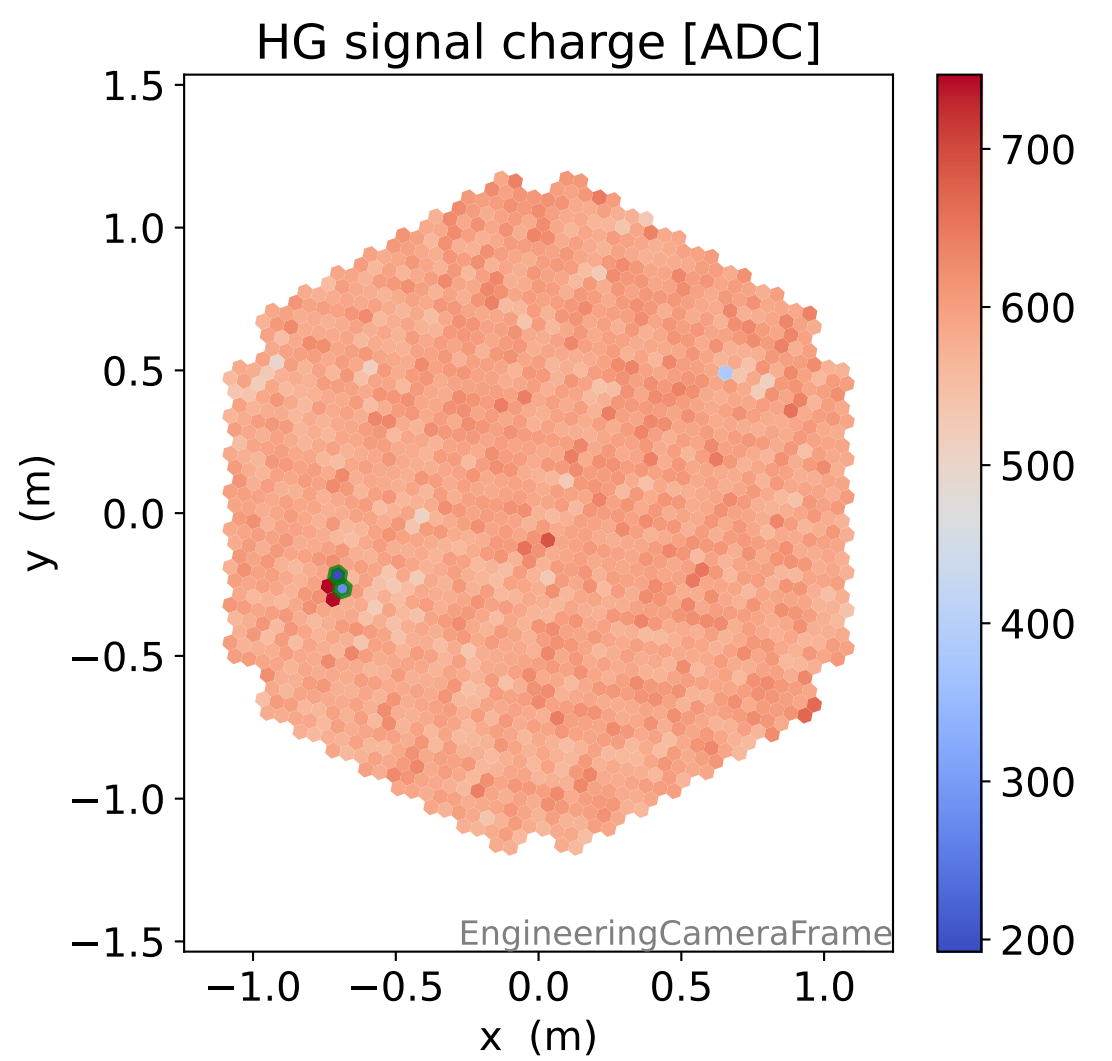
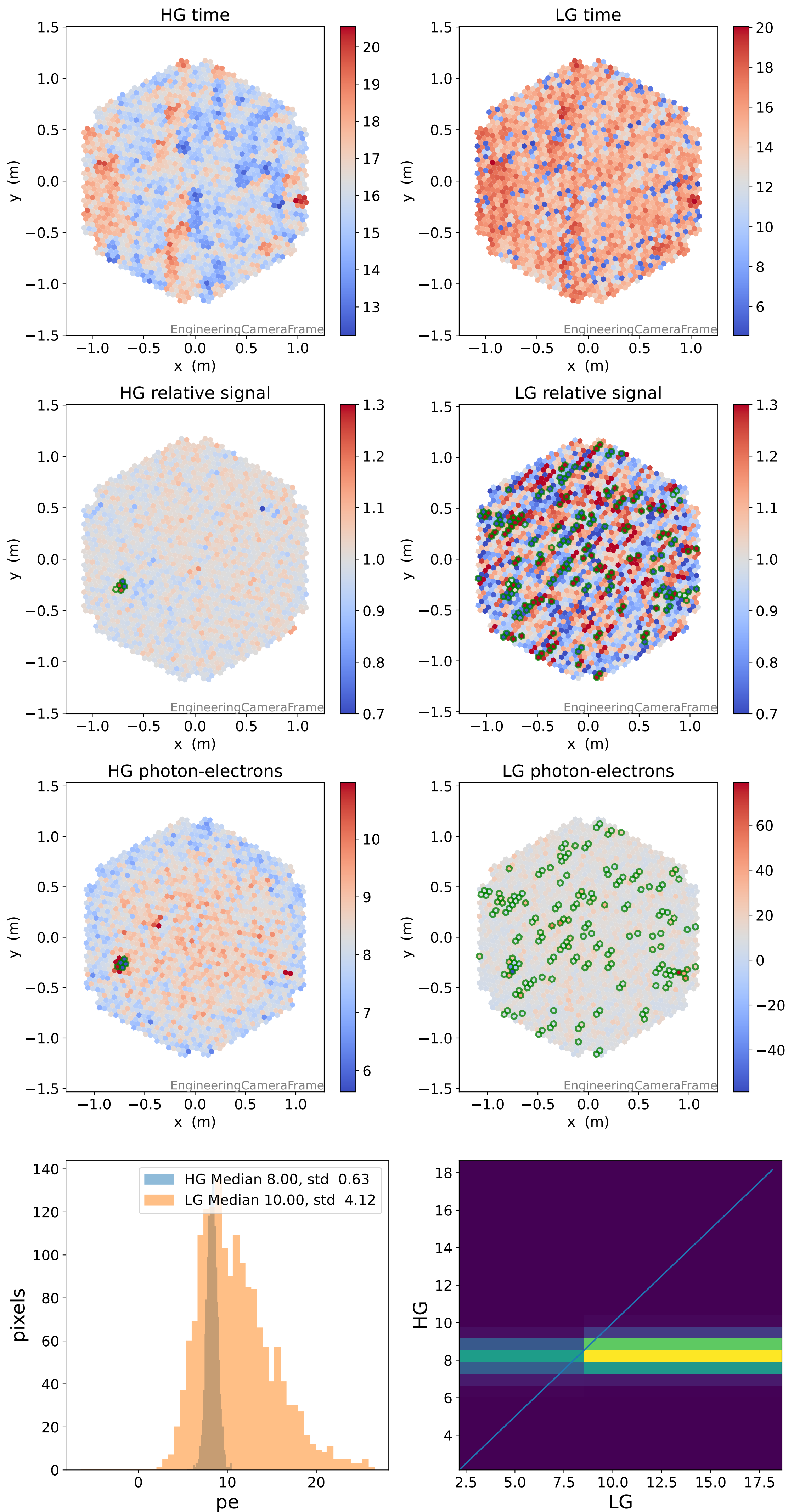


Run 15295

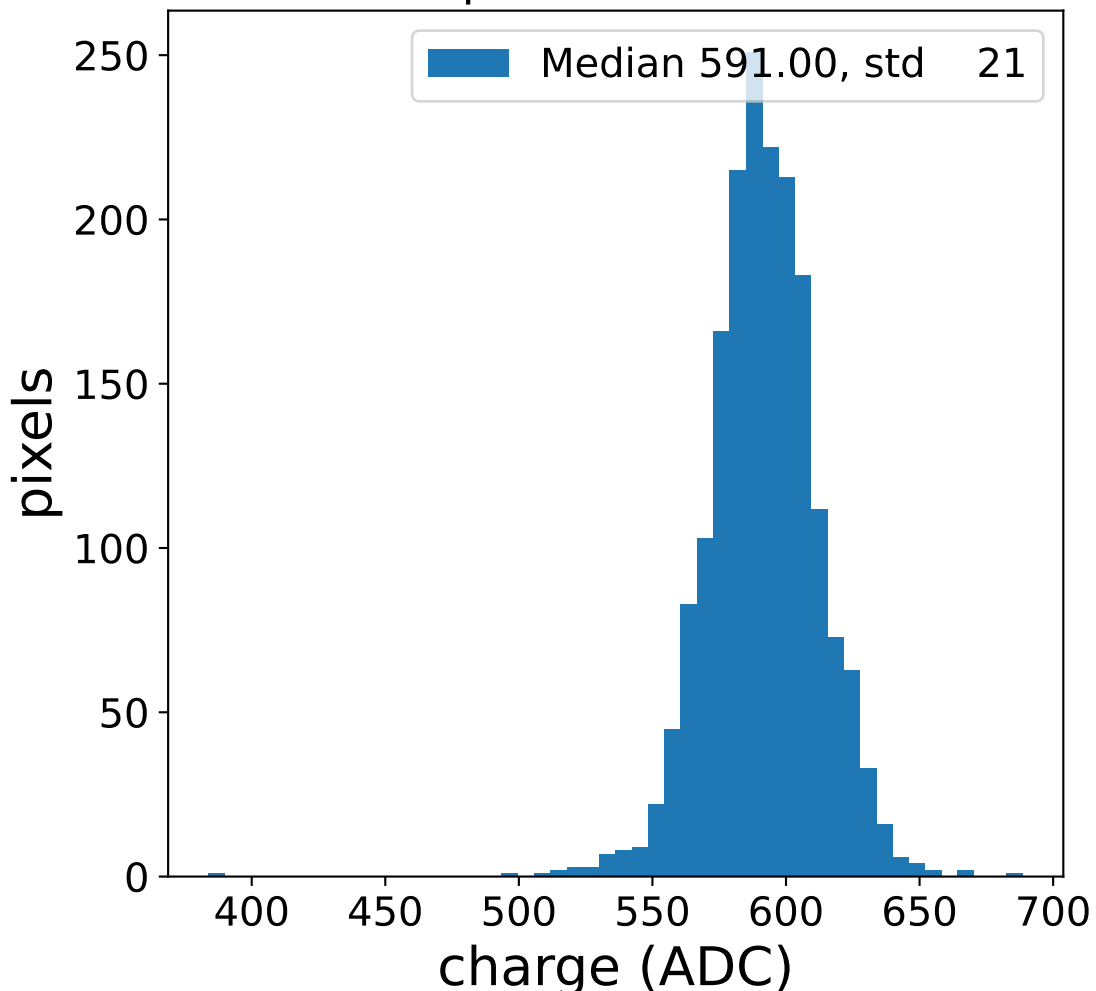


Run 15295

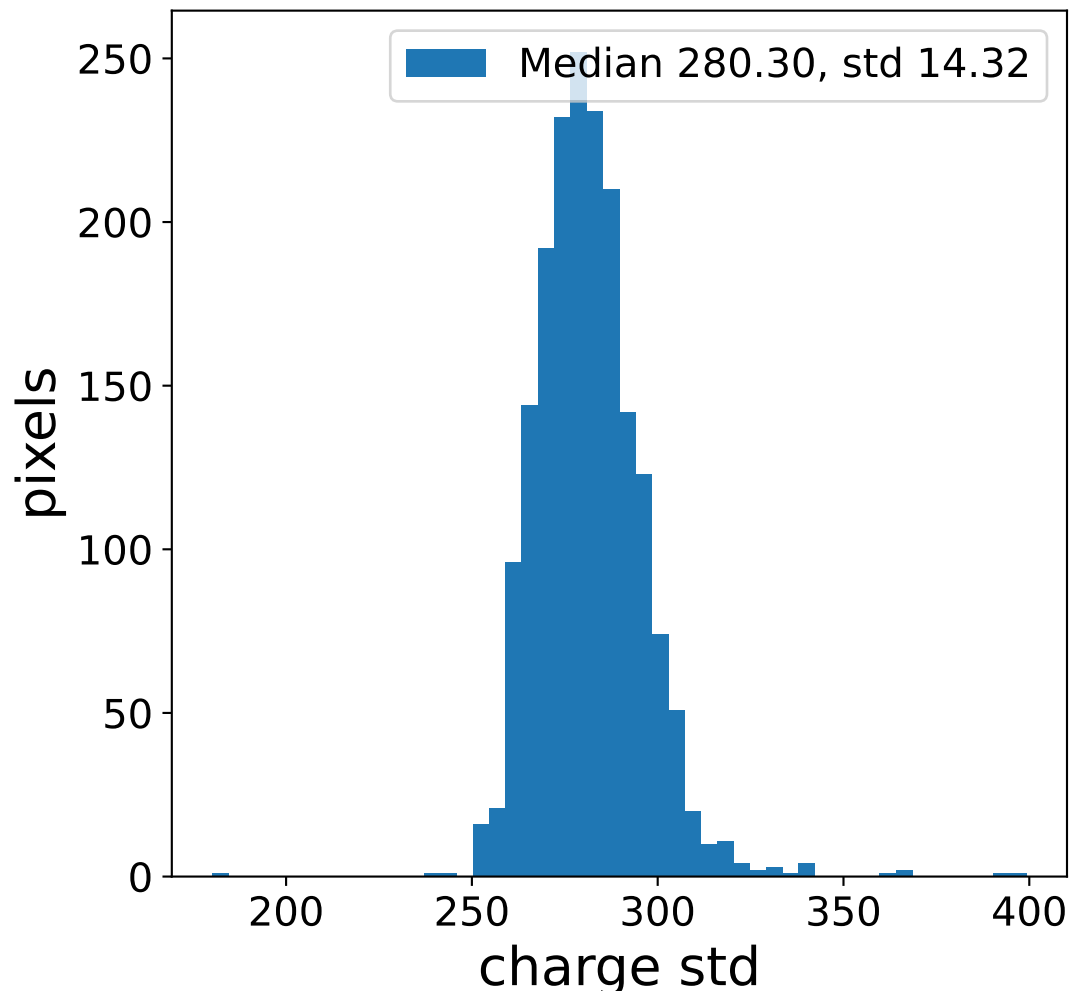


Run 15295 channel: HG

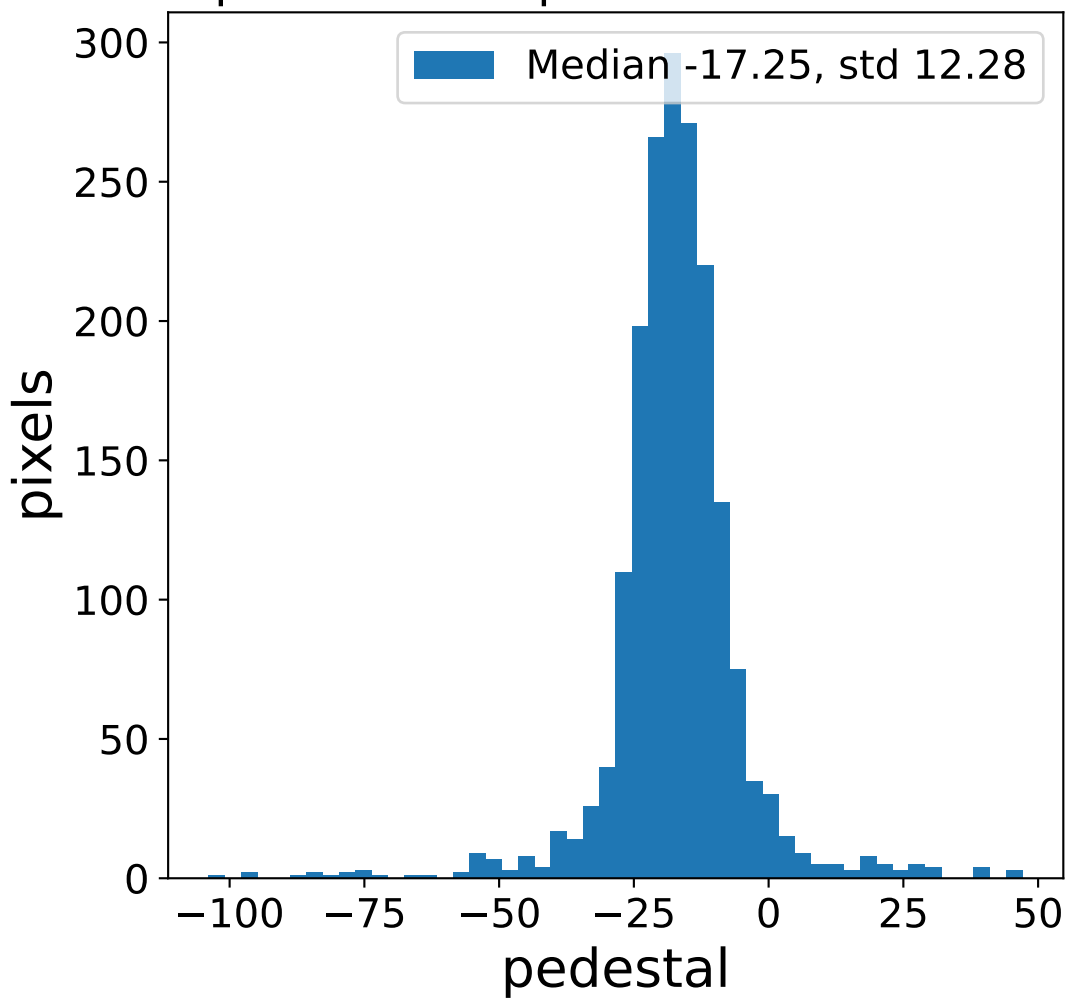
FF sample of 10000 events



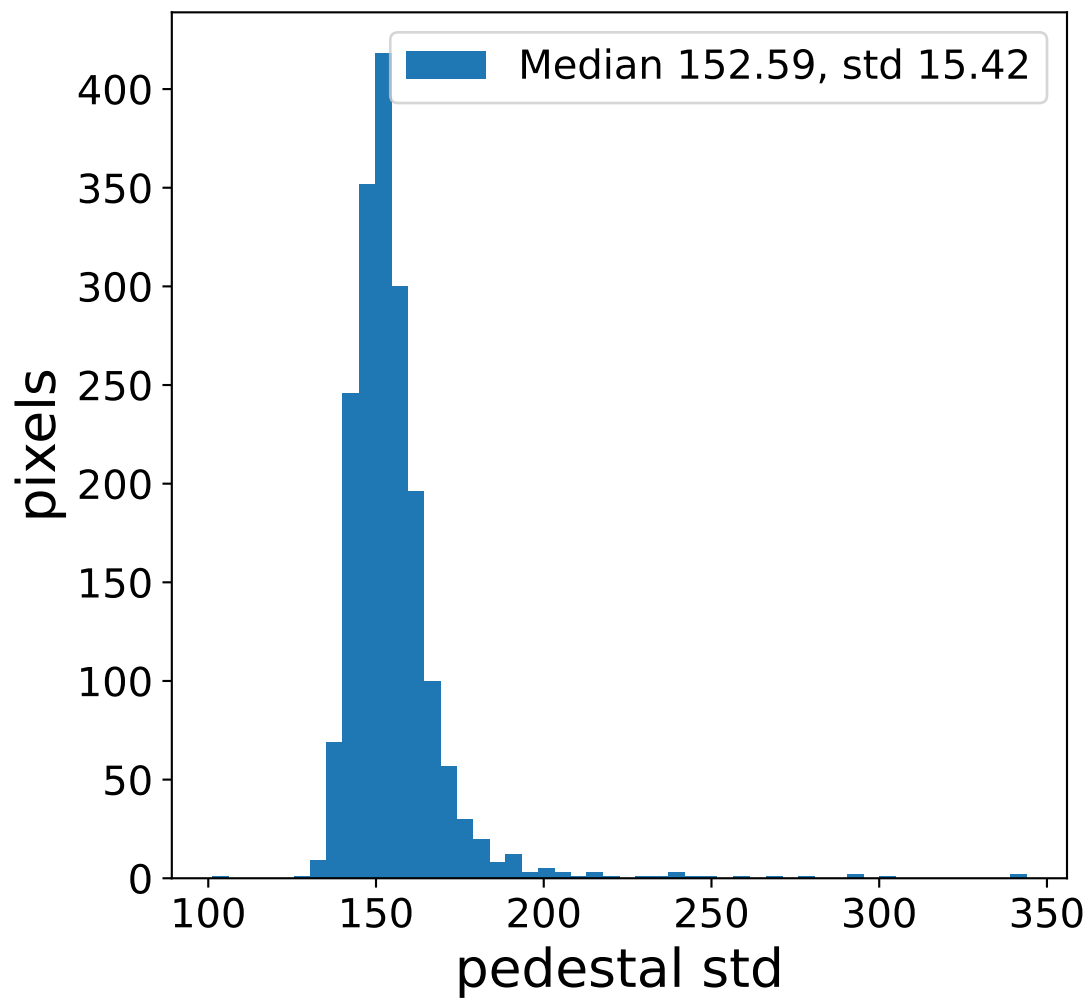
charge std



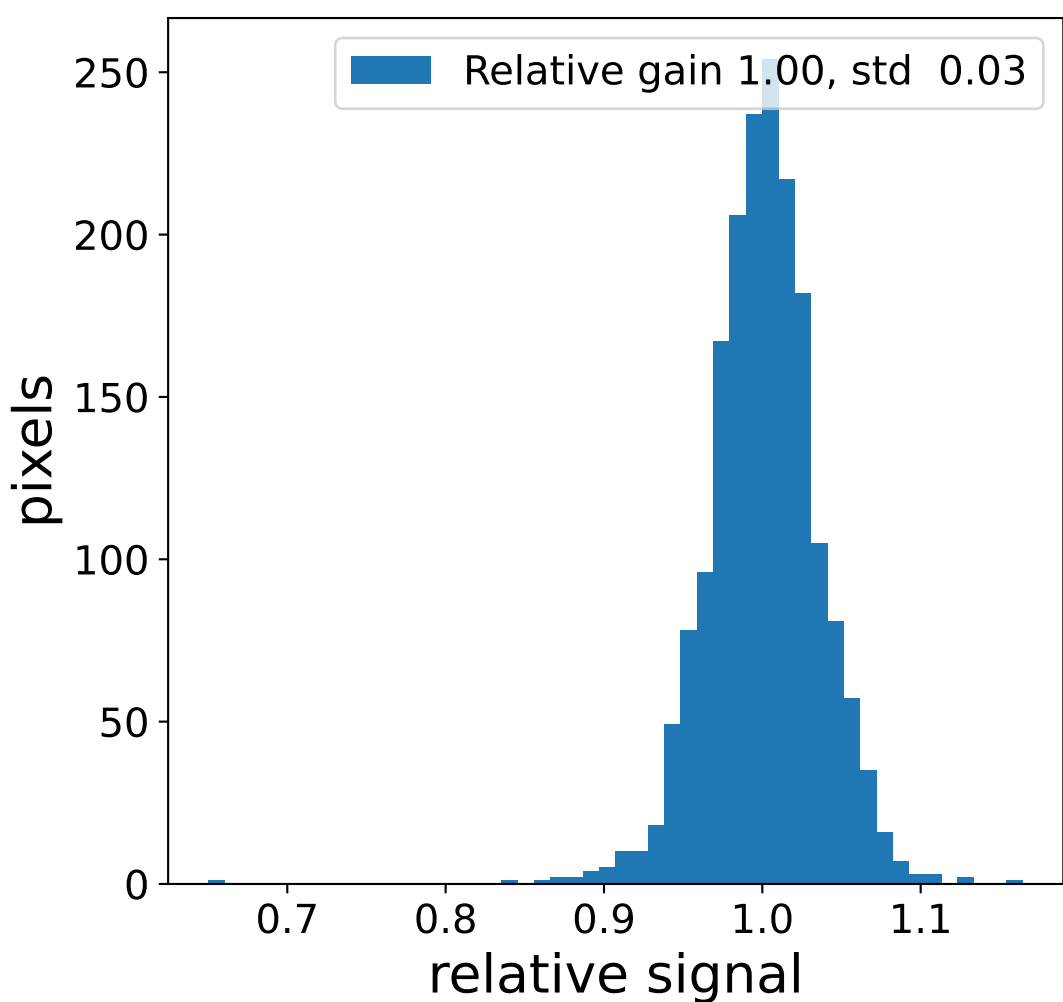
pedestal sample of 10000 events



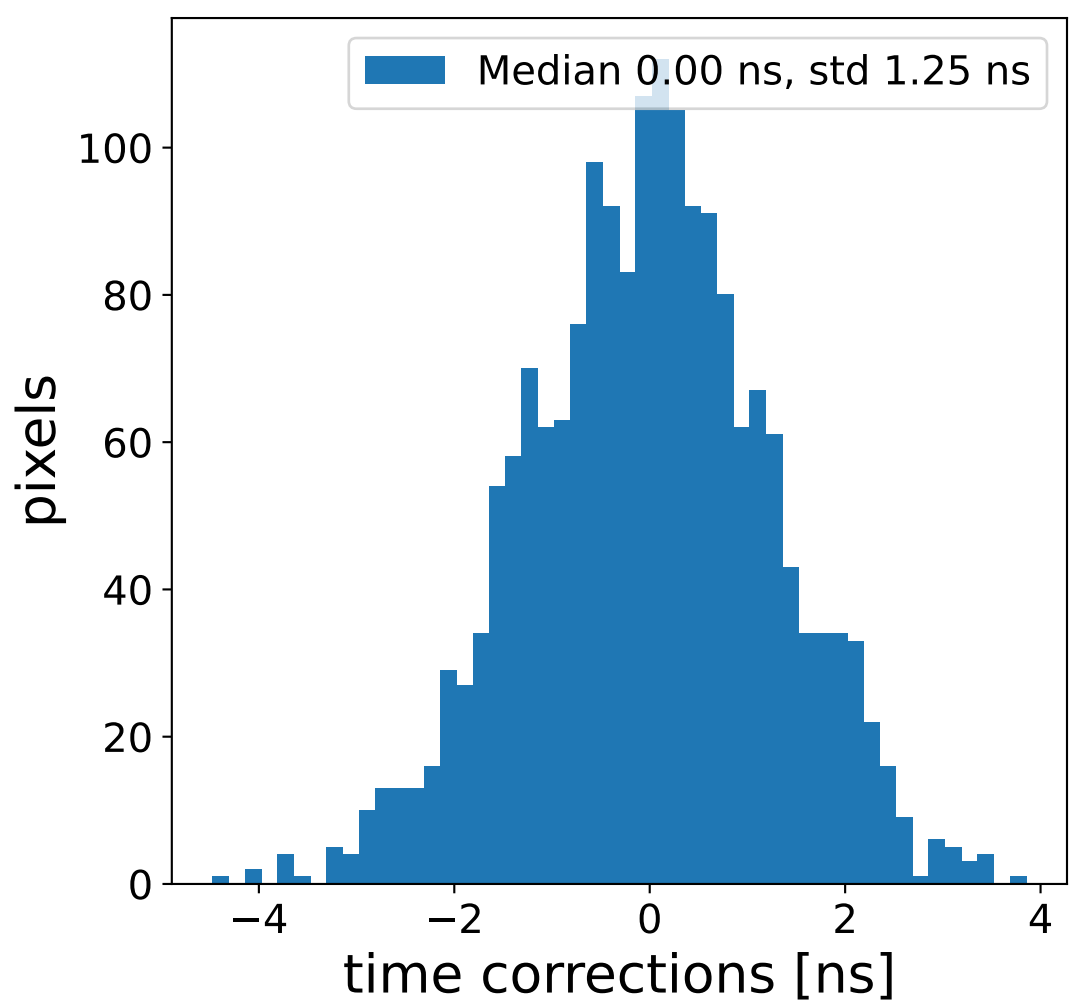
pedestal std



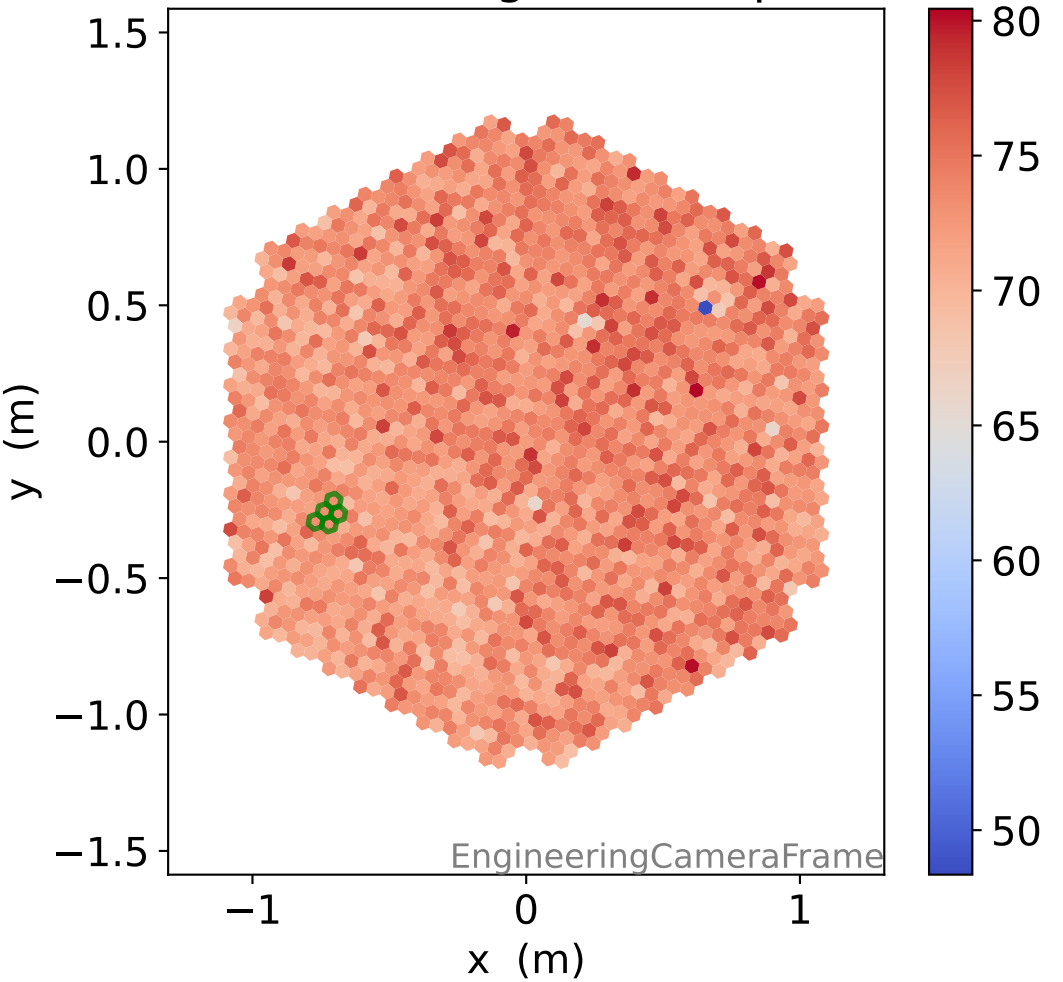
Relative gain 1.00, std 0.03



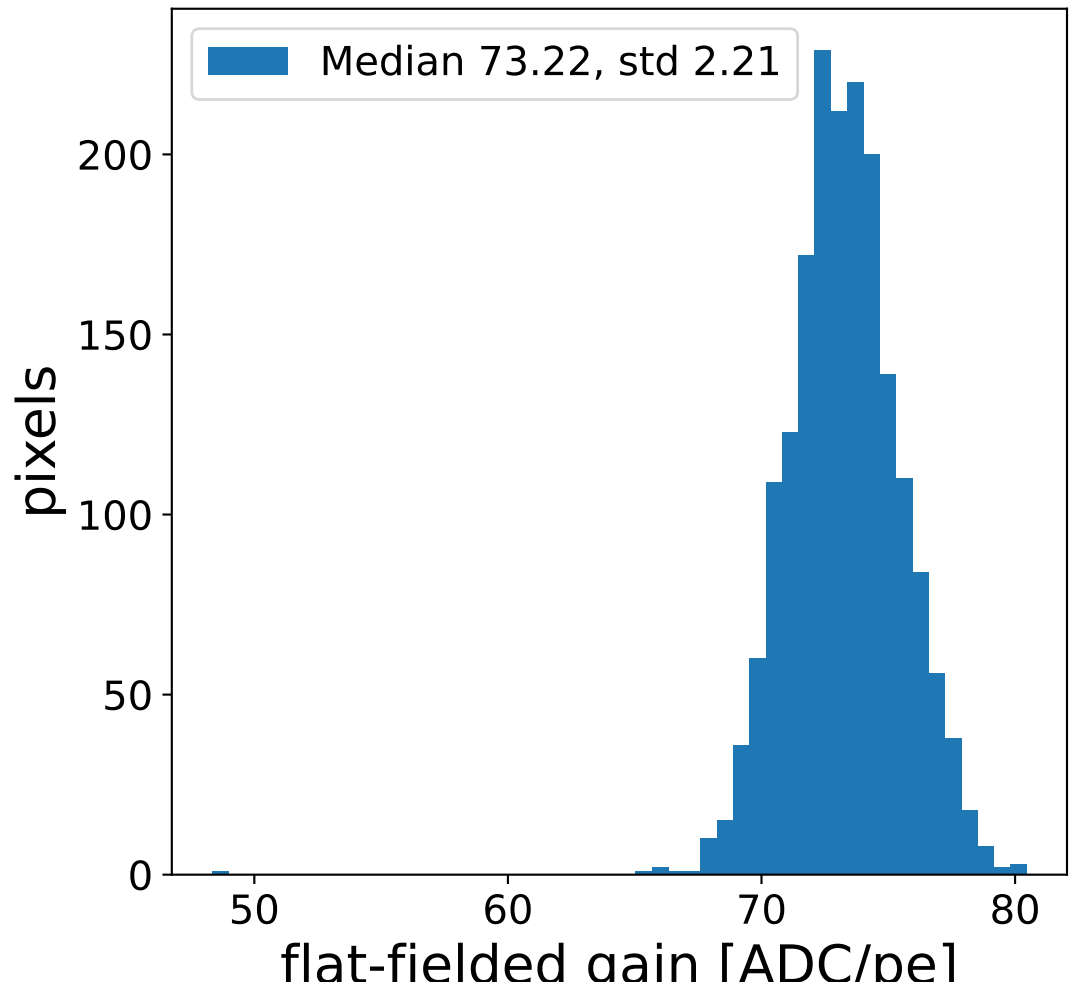
Median 0.00 ns, std 1.25 ns



flat-fielded gain [ADC/pe]

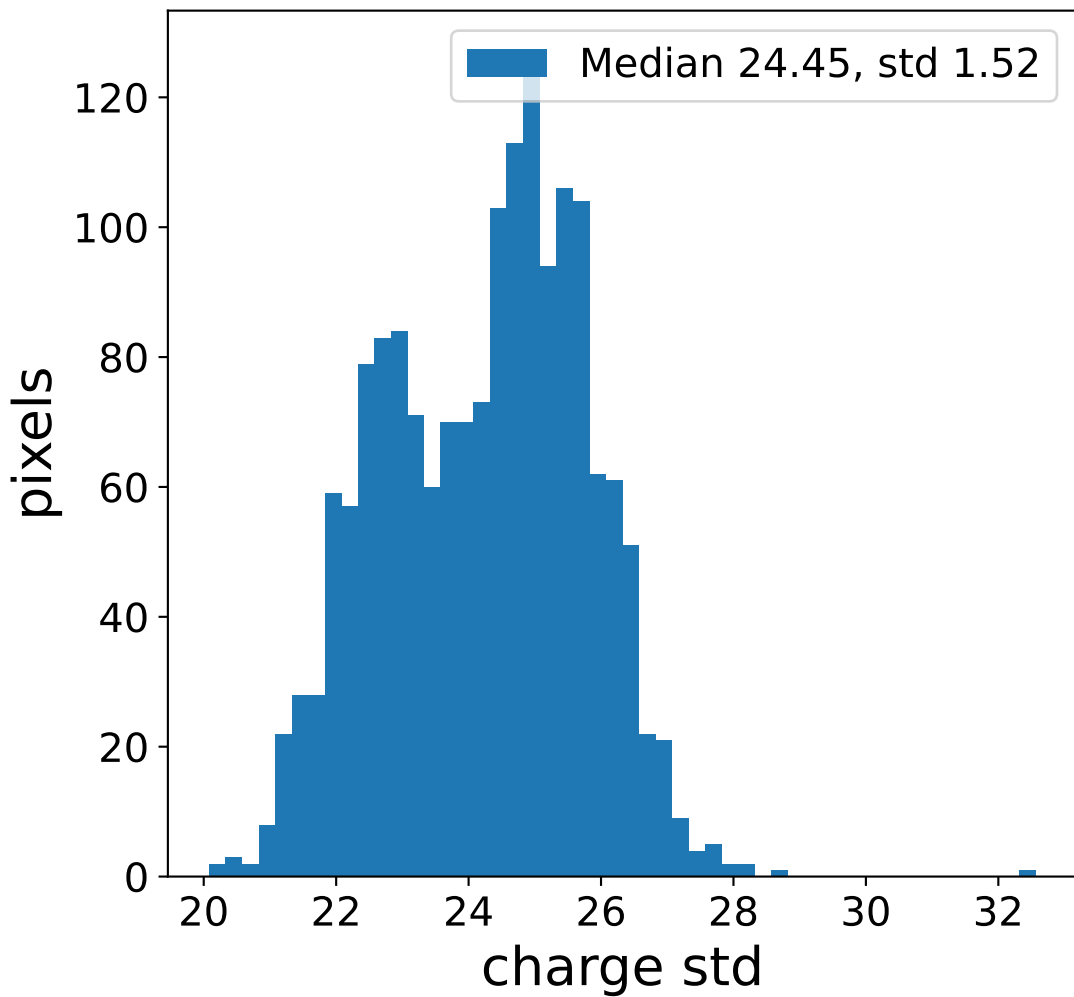
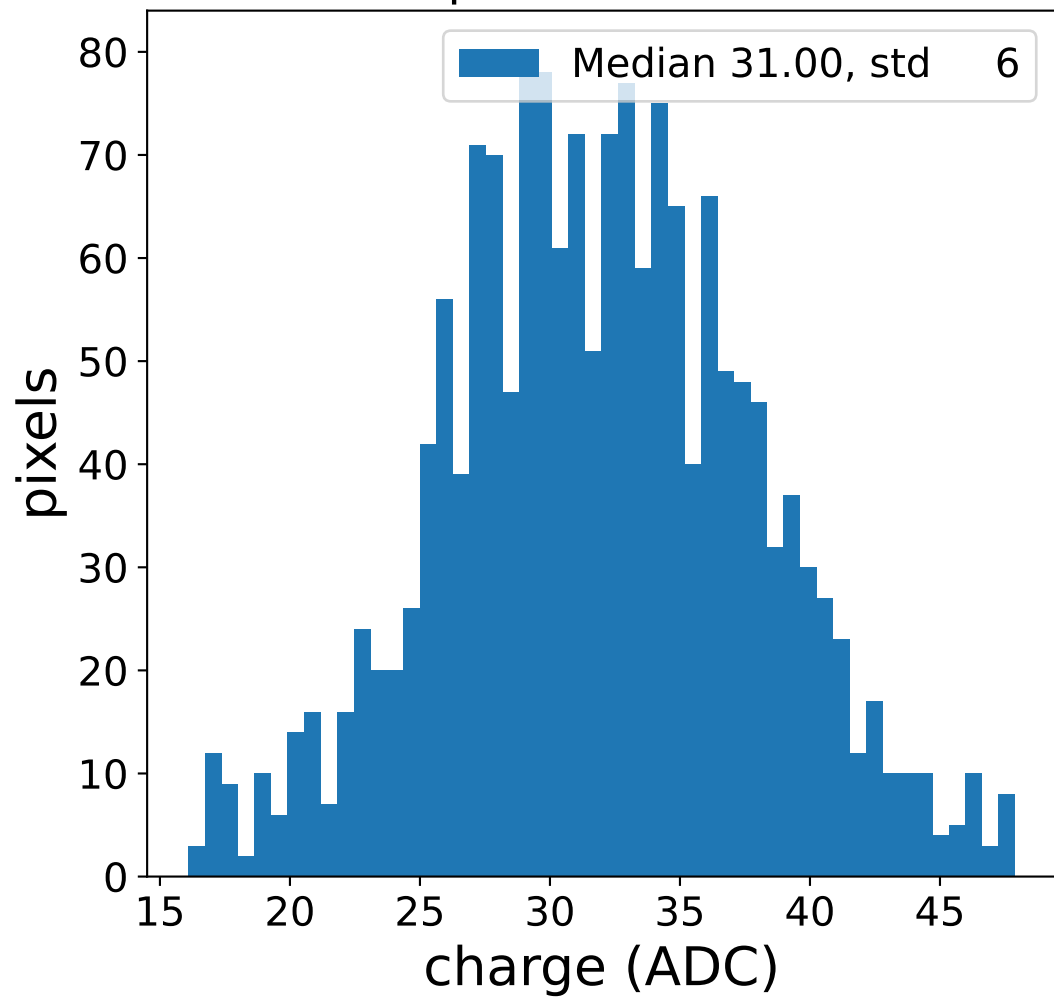


Median 73.22, std 2.21

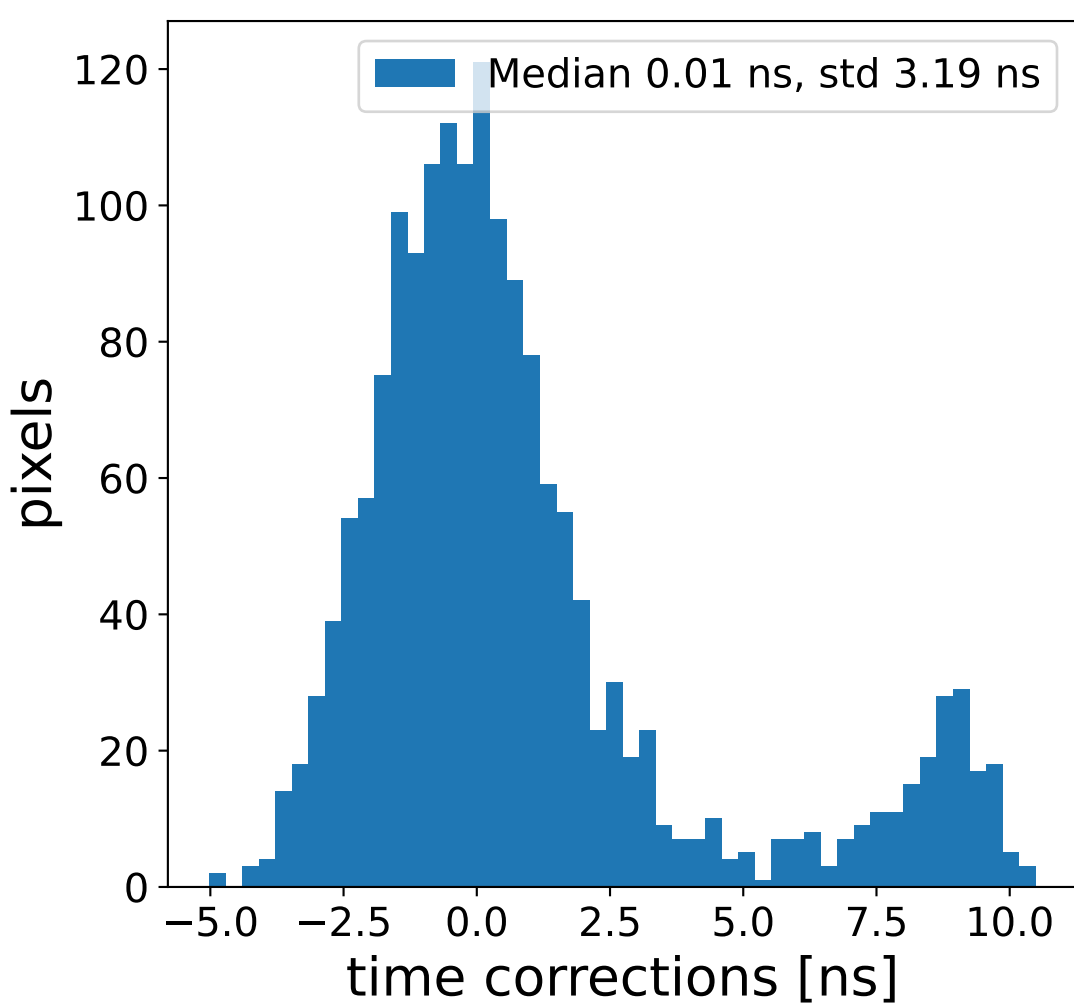
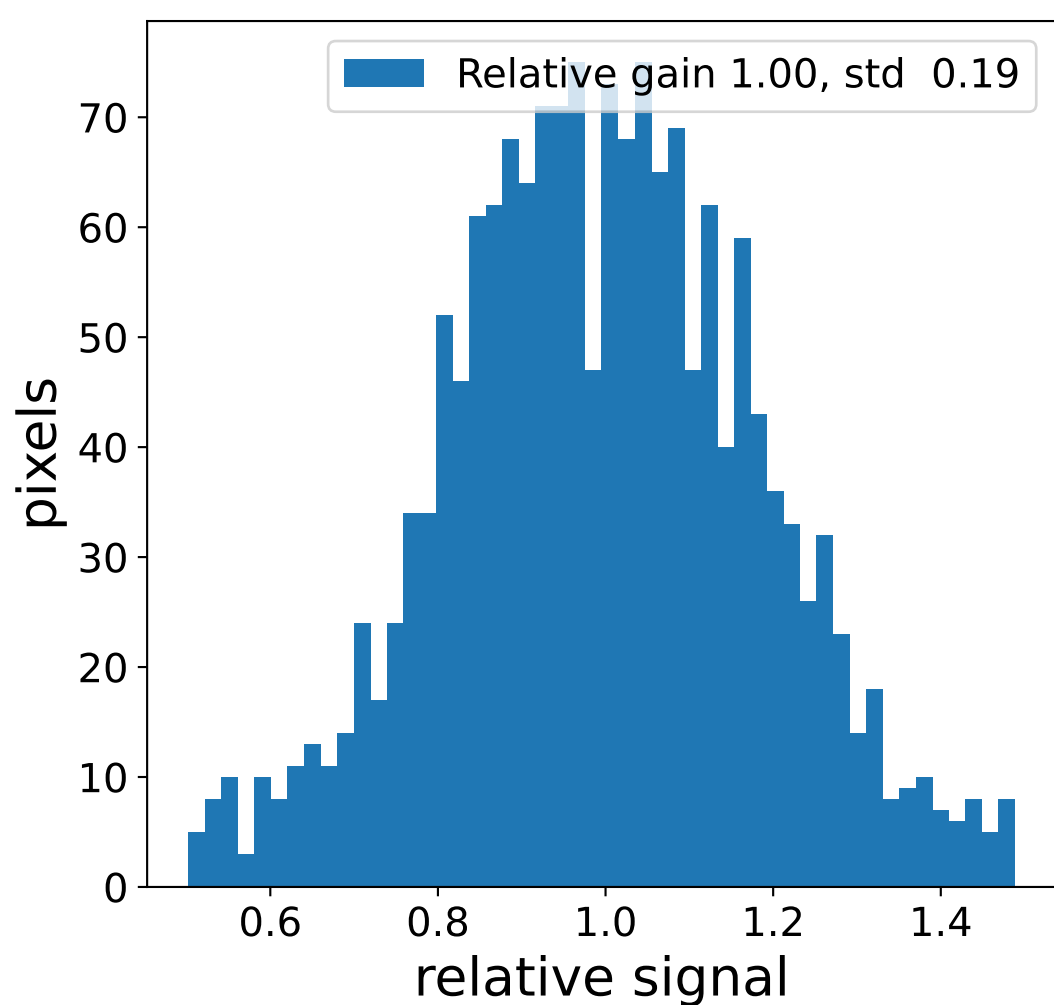
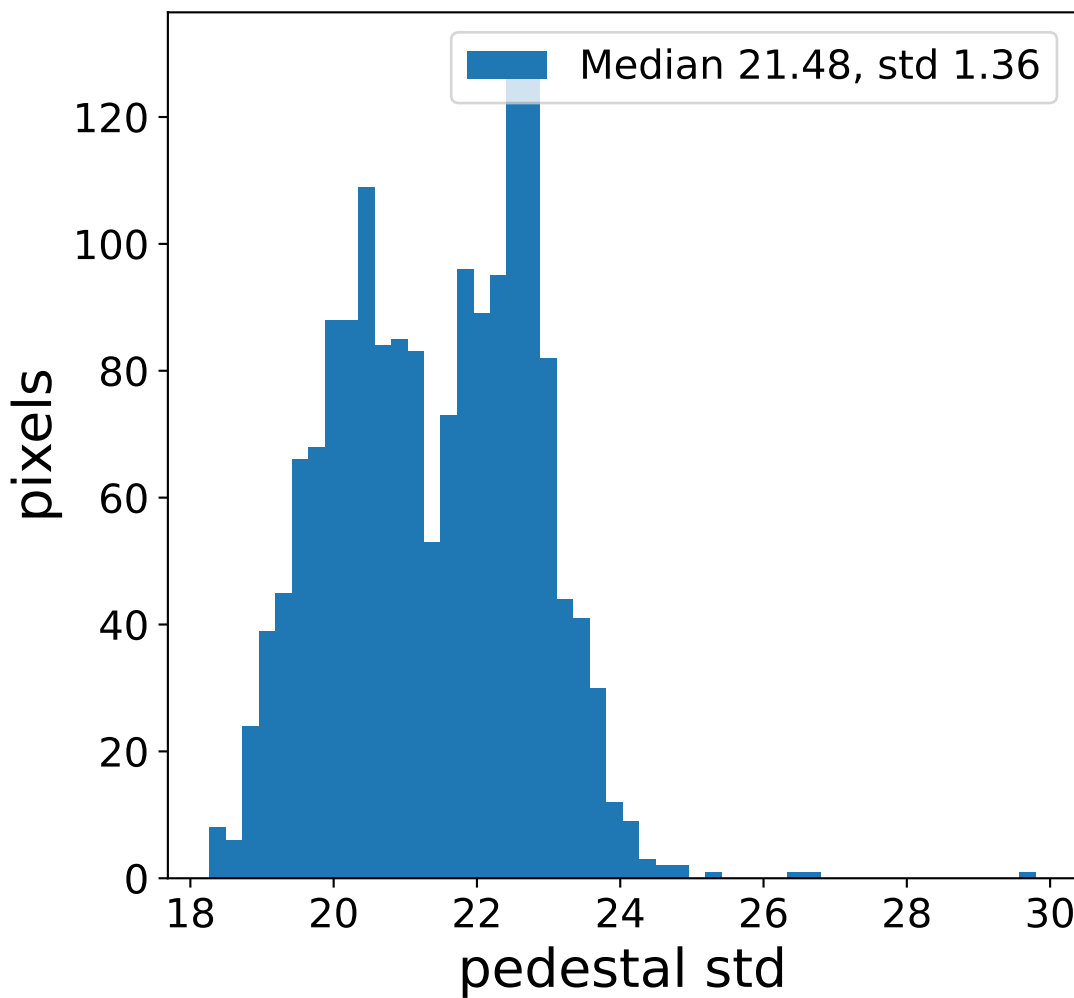
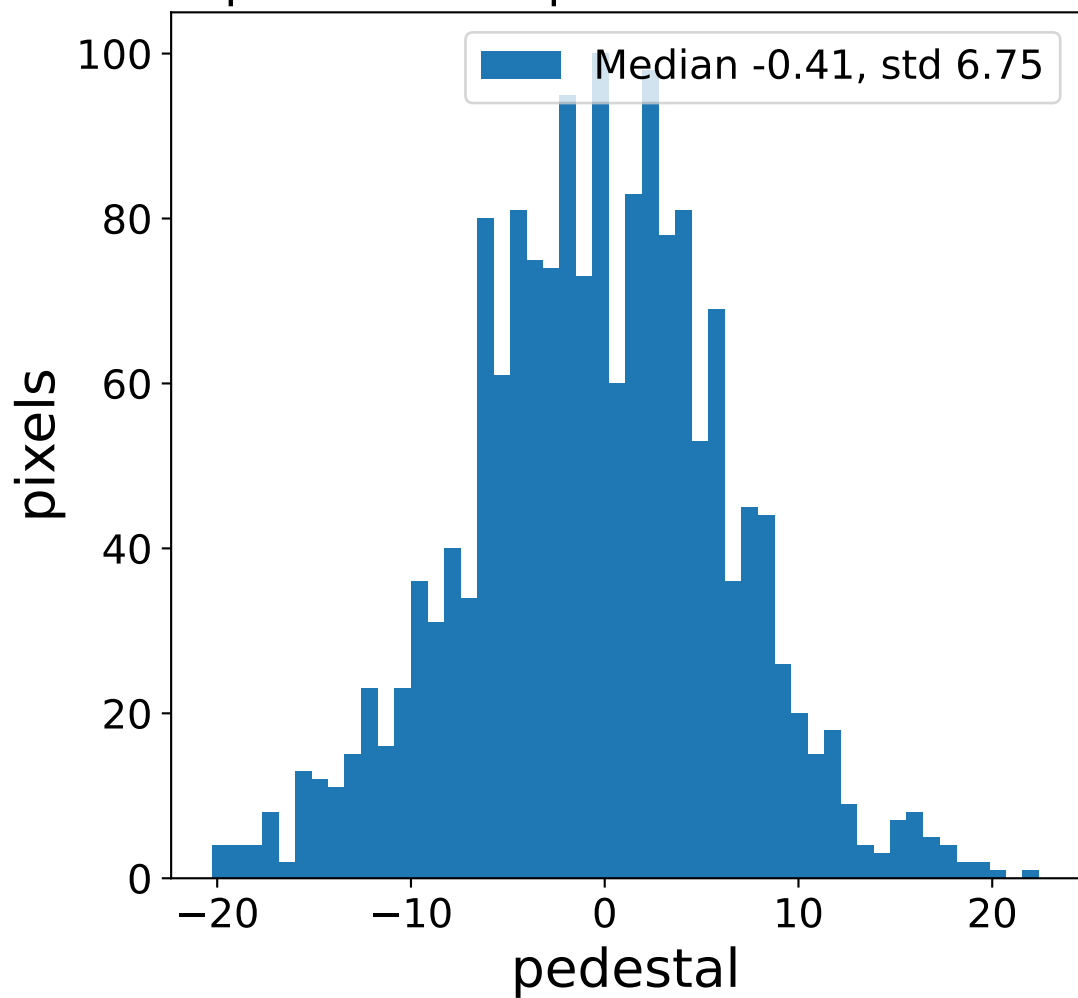


Run 15295 channel: LG

FF sample of 10000 events



pedestal sample of 10000 events



flat-fielded gain [ADC/pe]

