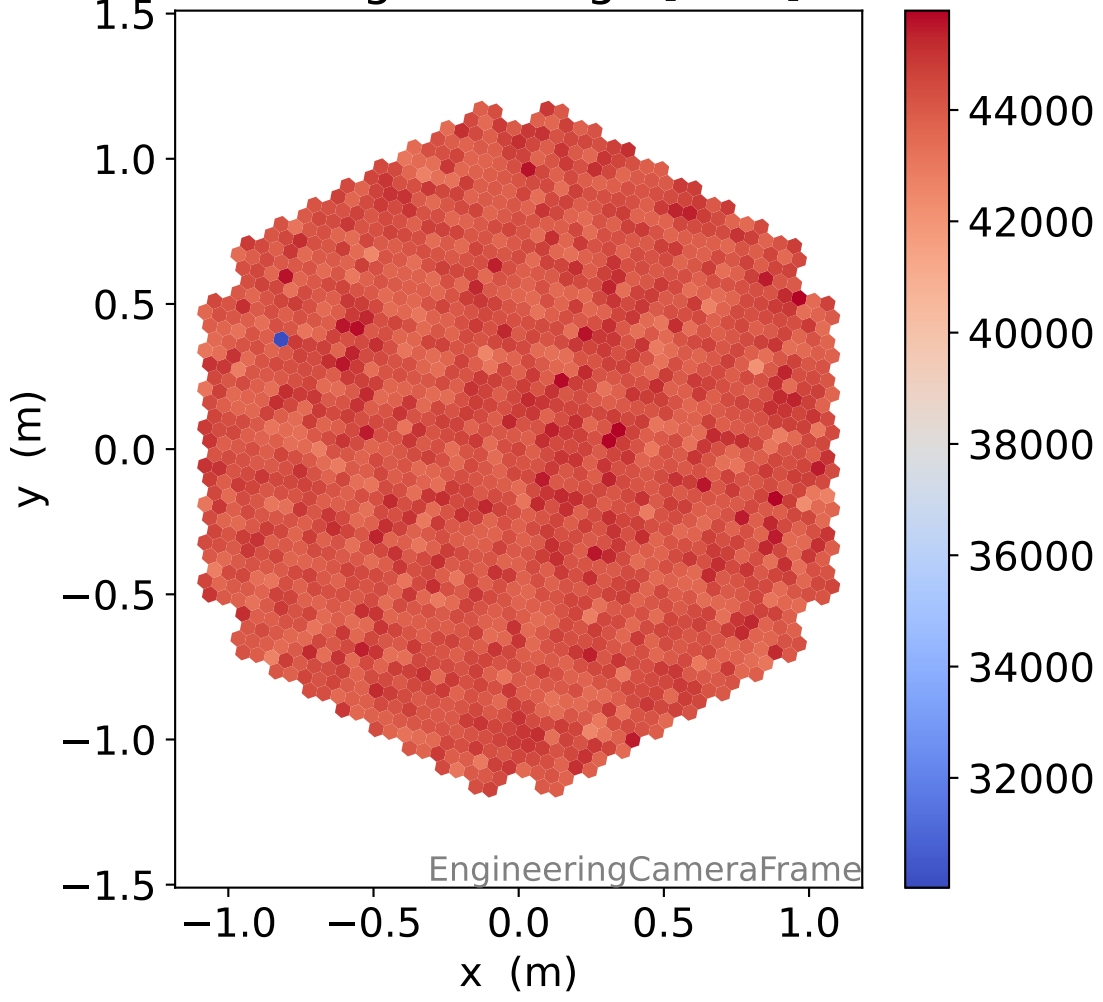
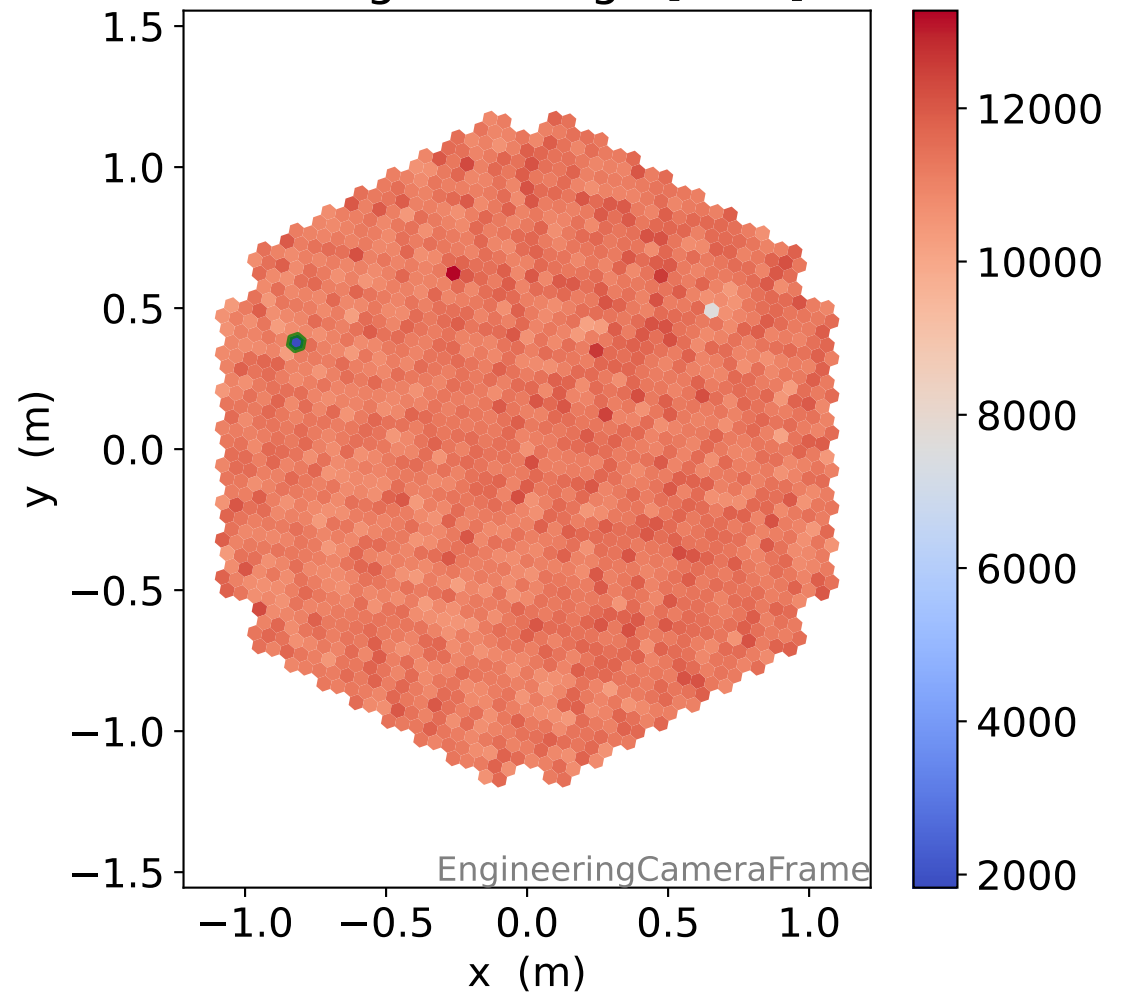


Run 15290

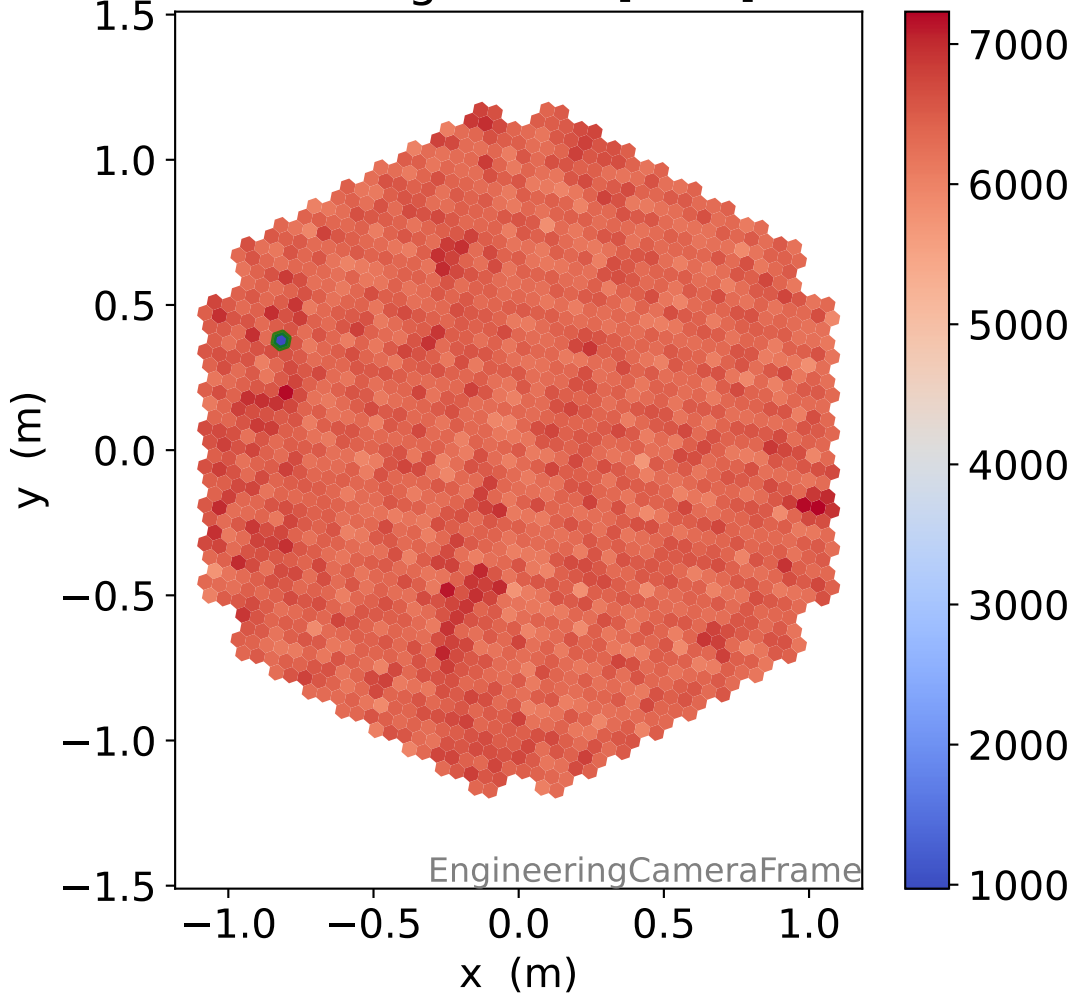
HG signal charge [ADC]



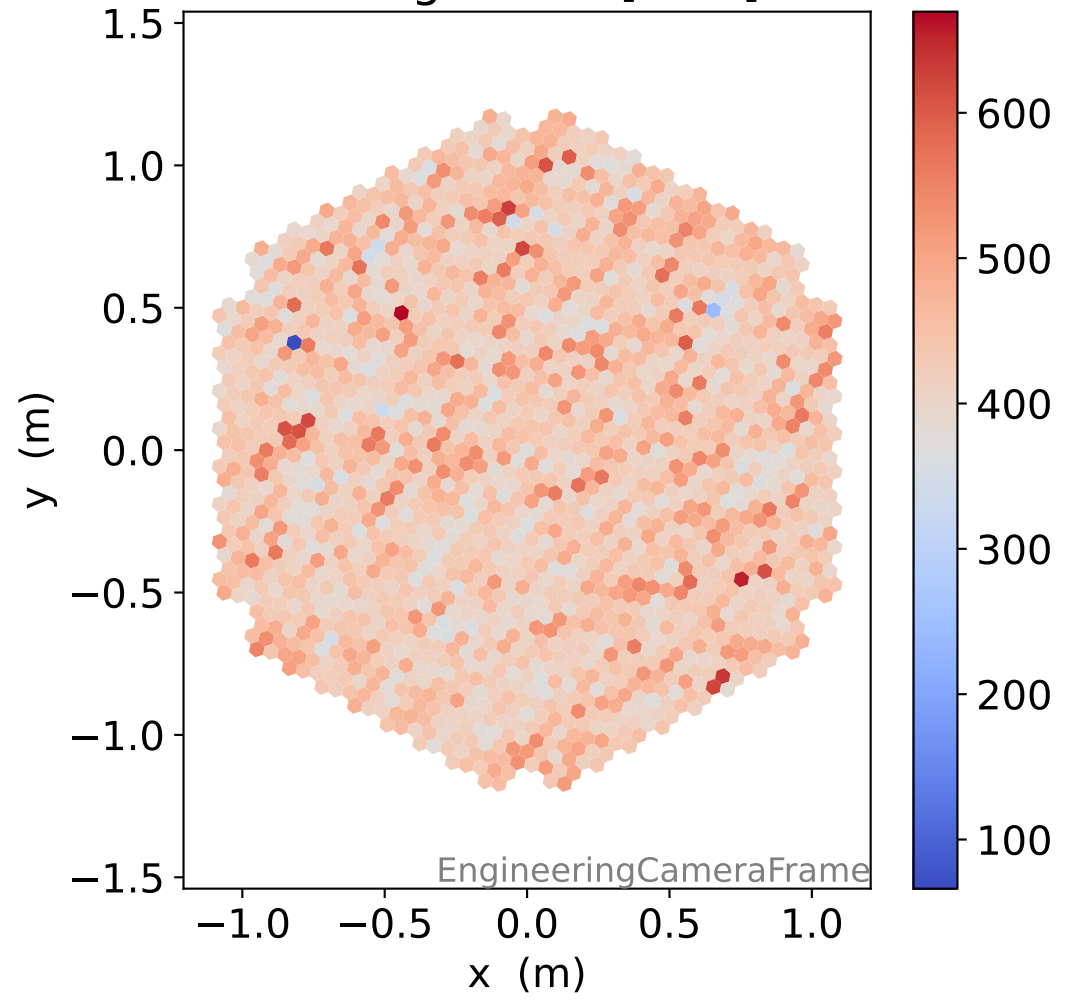
LG signal charge [ADC]



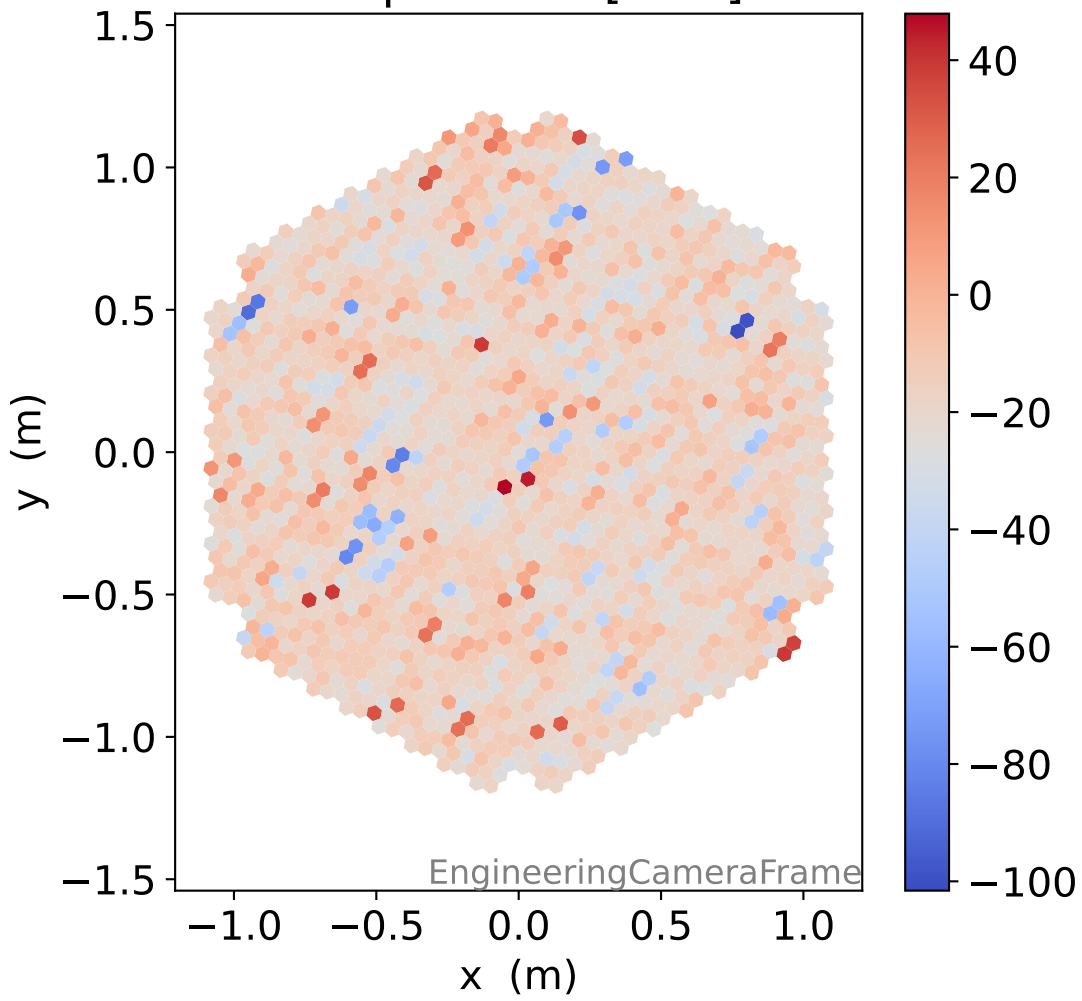
HG signal std [ADC]



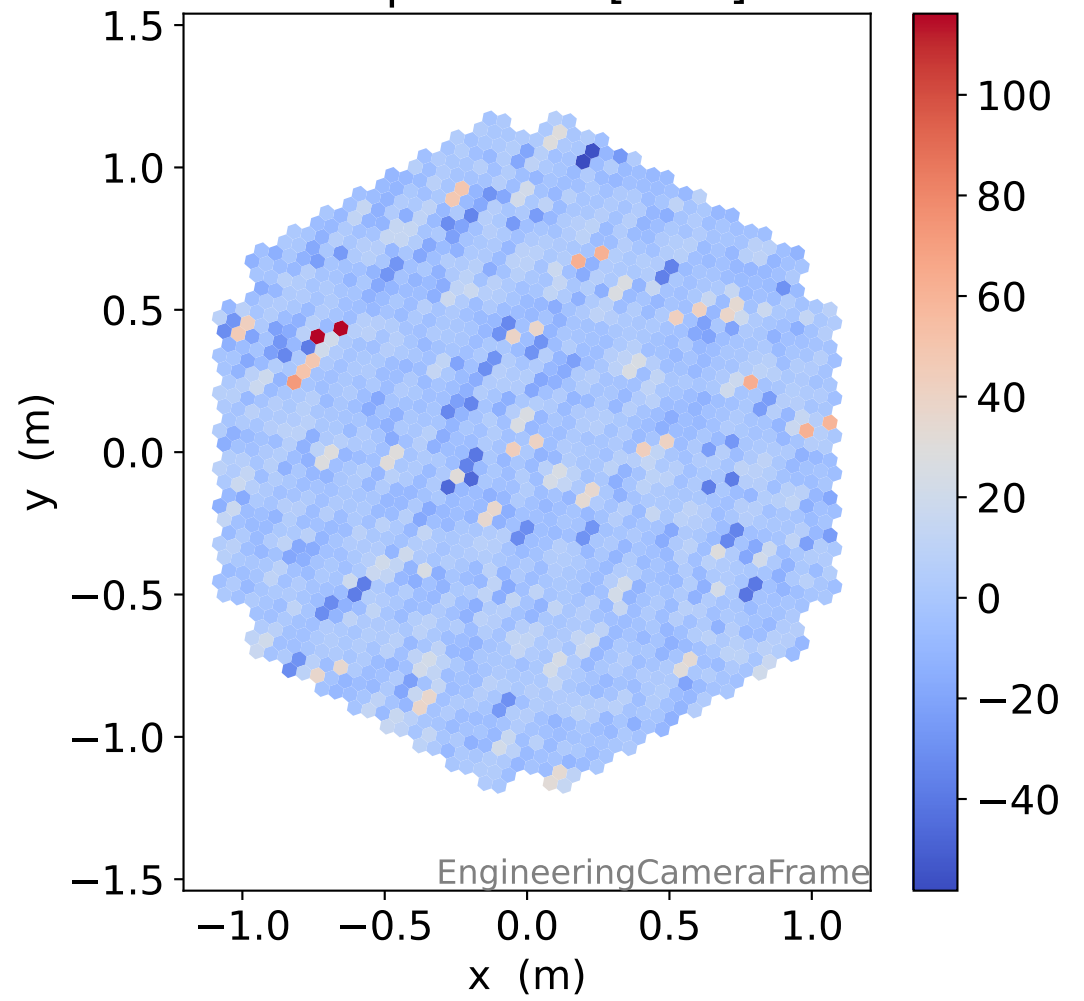
LG signal std [ADC]



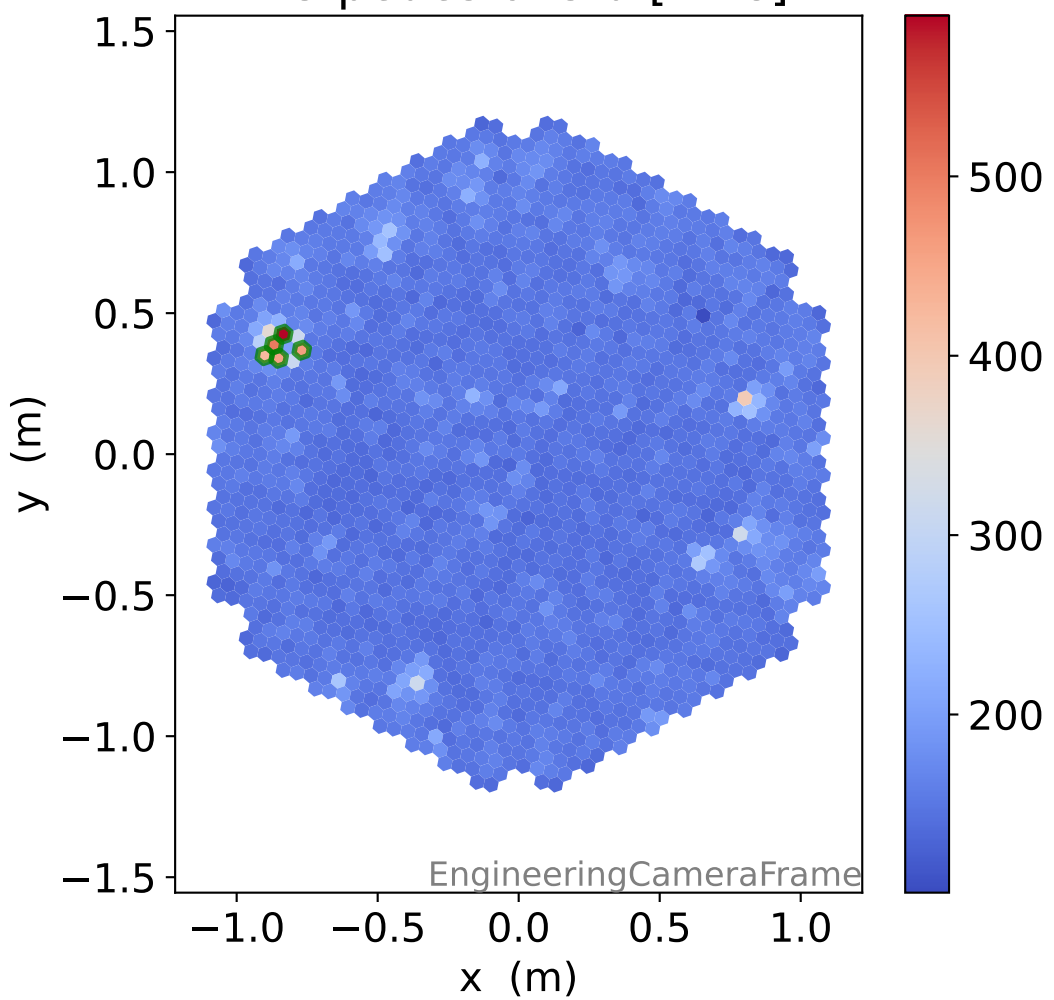
HG pedestal [ADC]



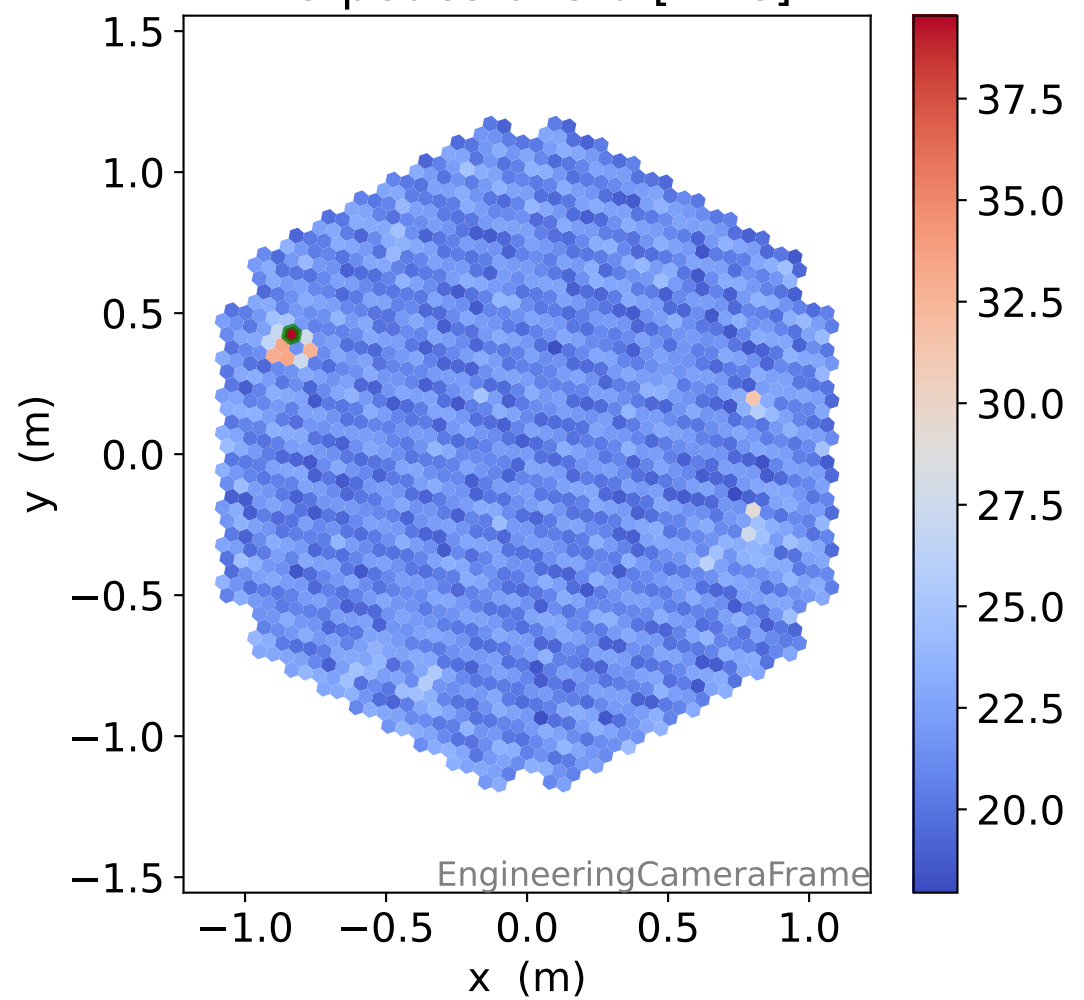
LG pedestal [ADC]



HG pedestal std [ADC]

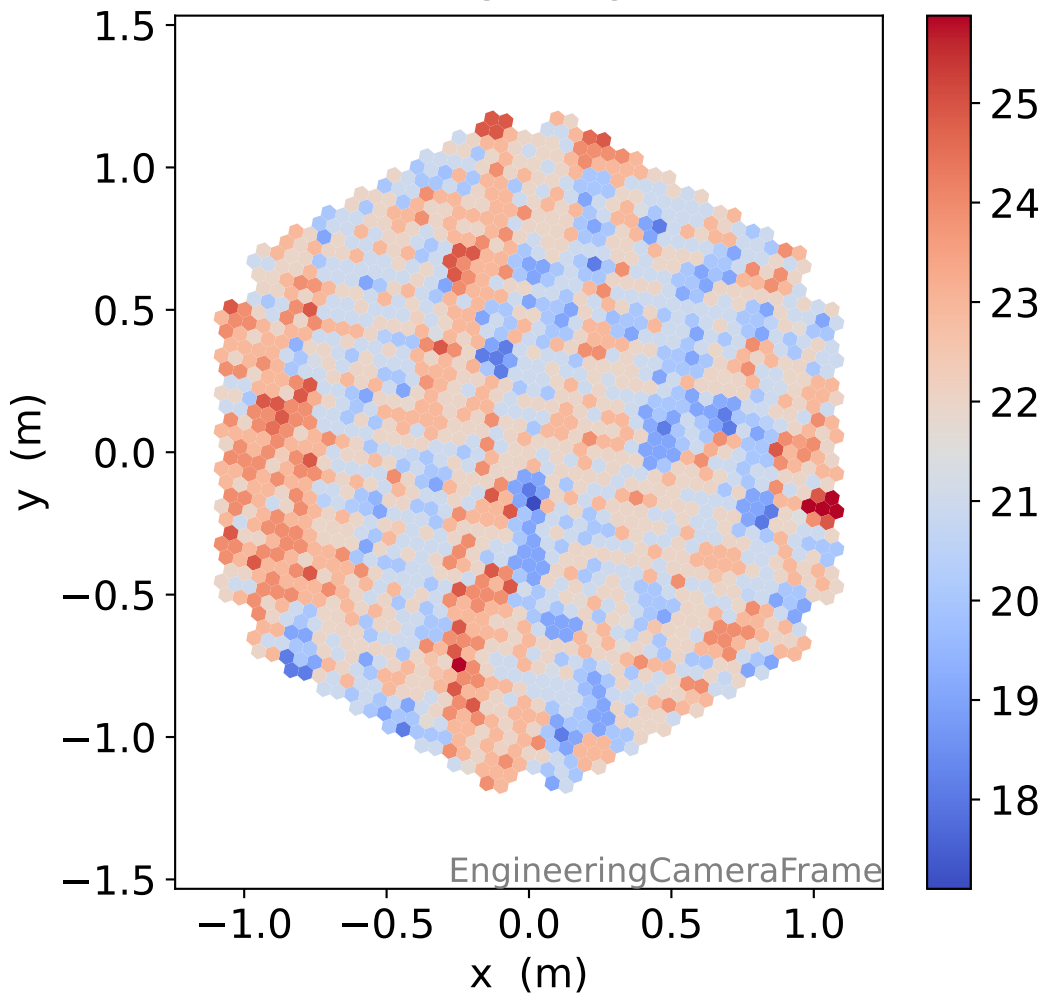


LG pedestal std [ADC]

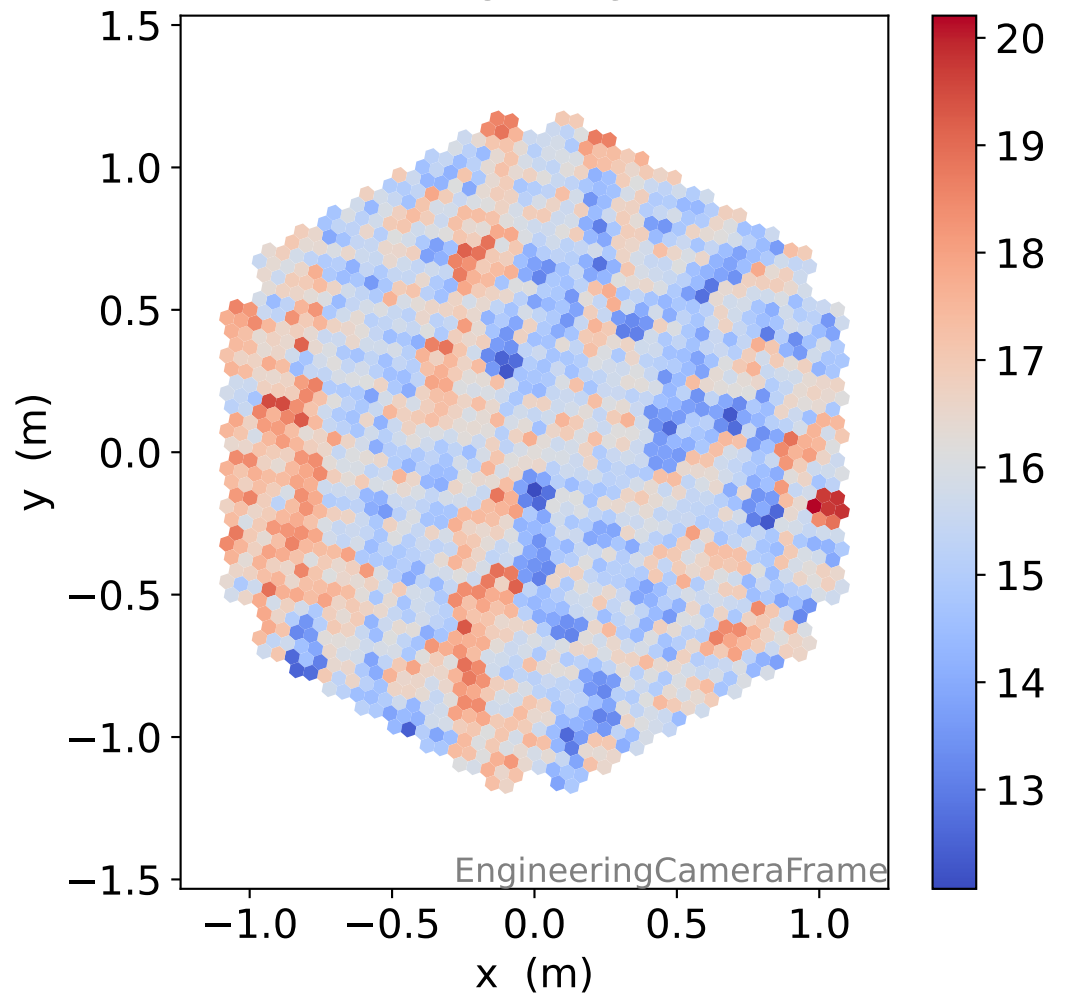


Run 15290

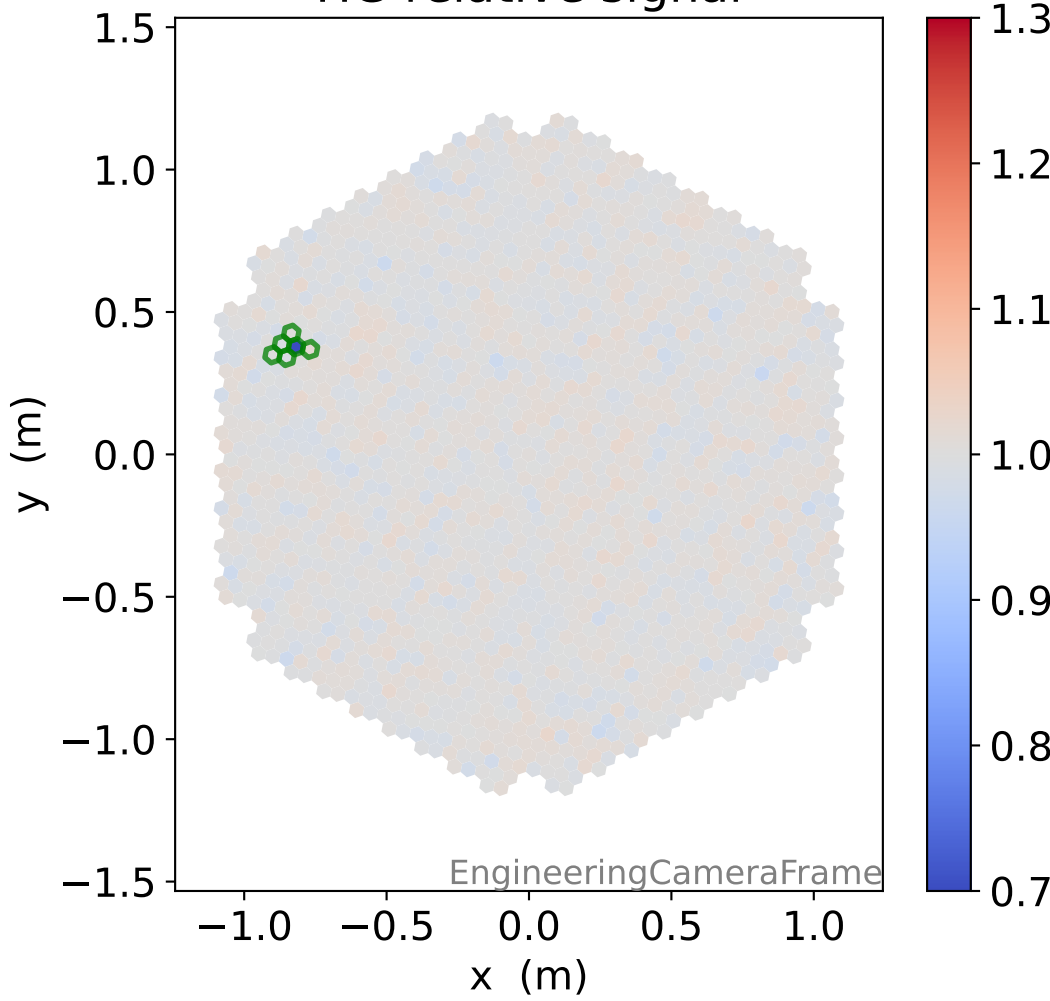
HG time



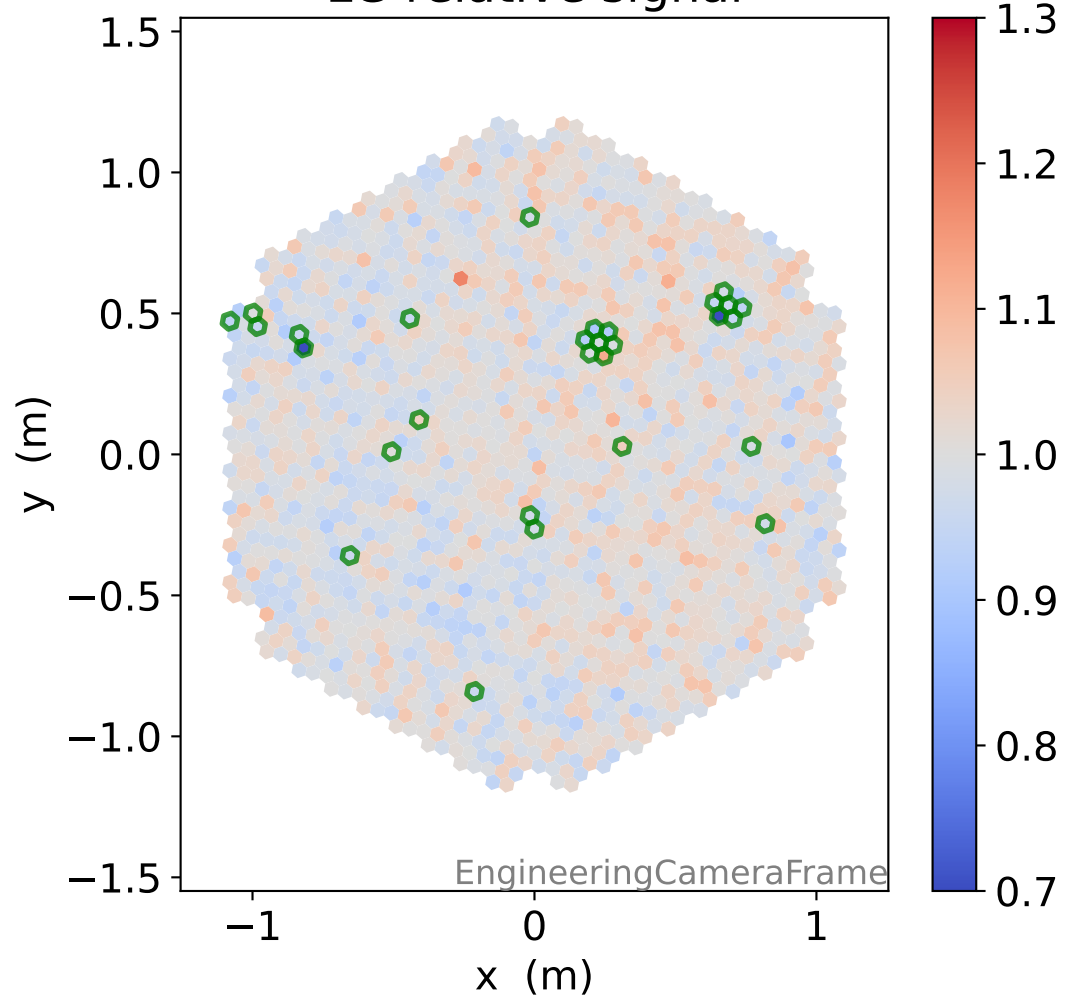
LG time



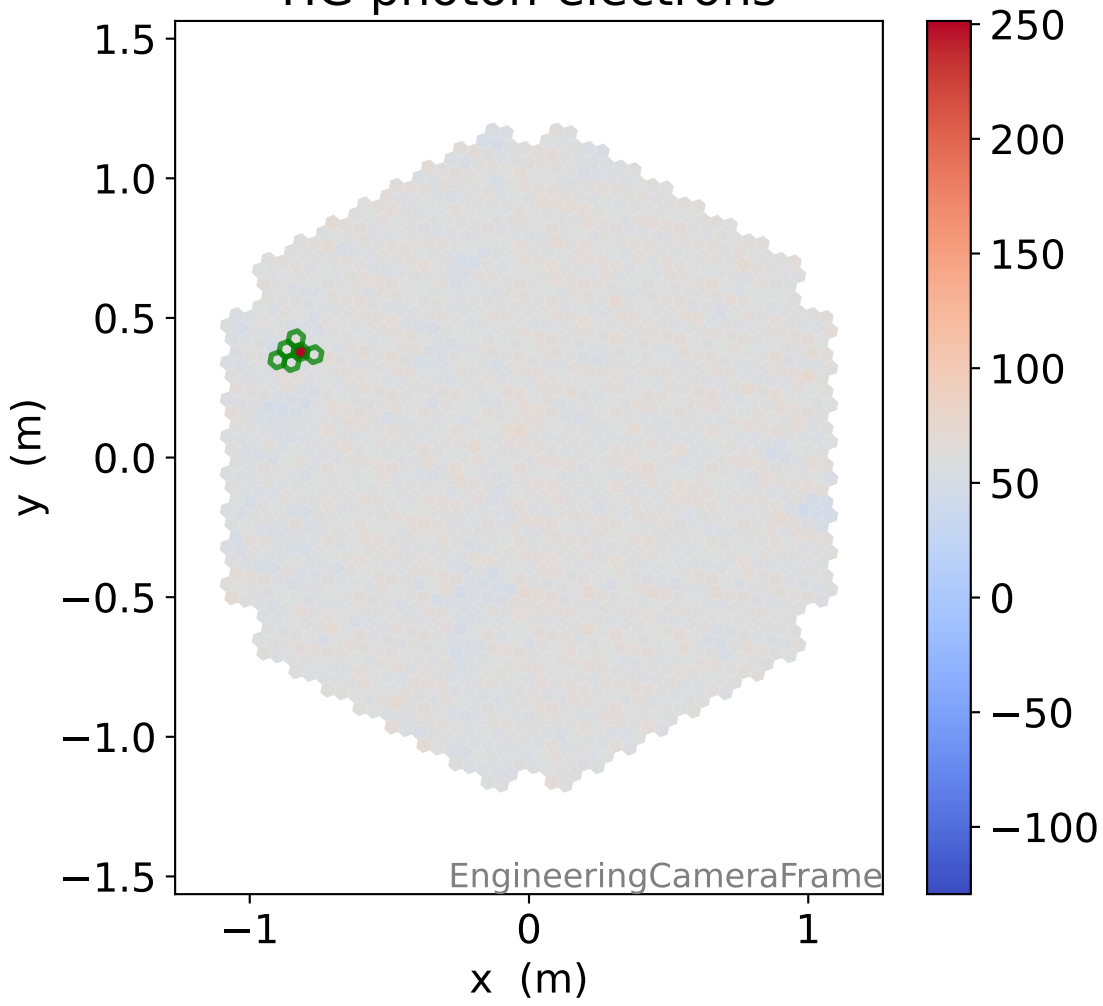
HG relative signal



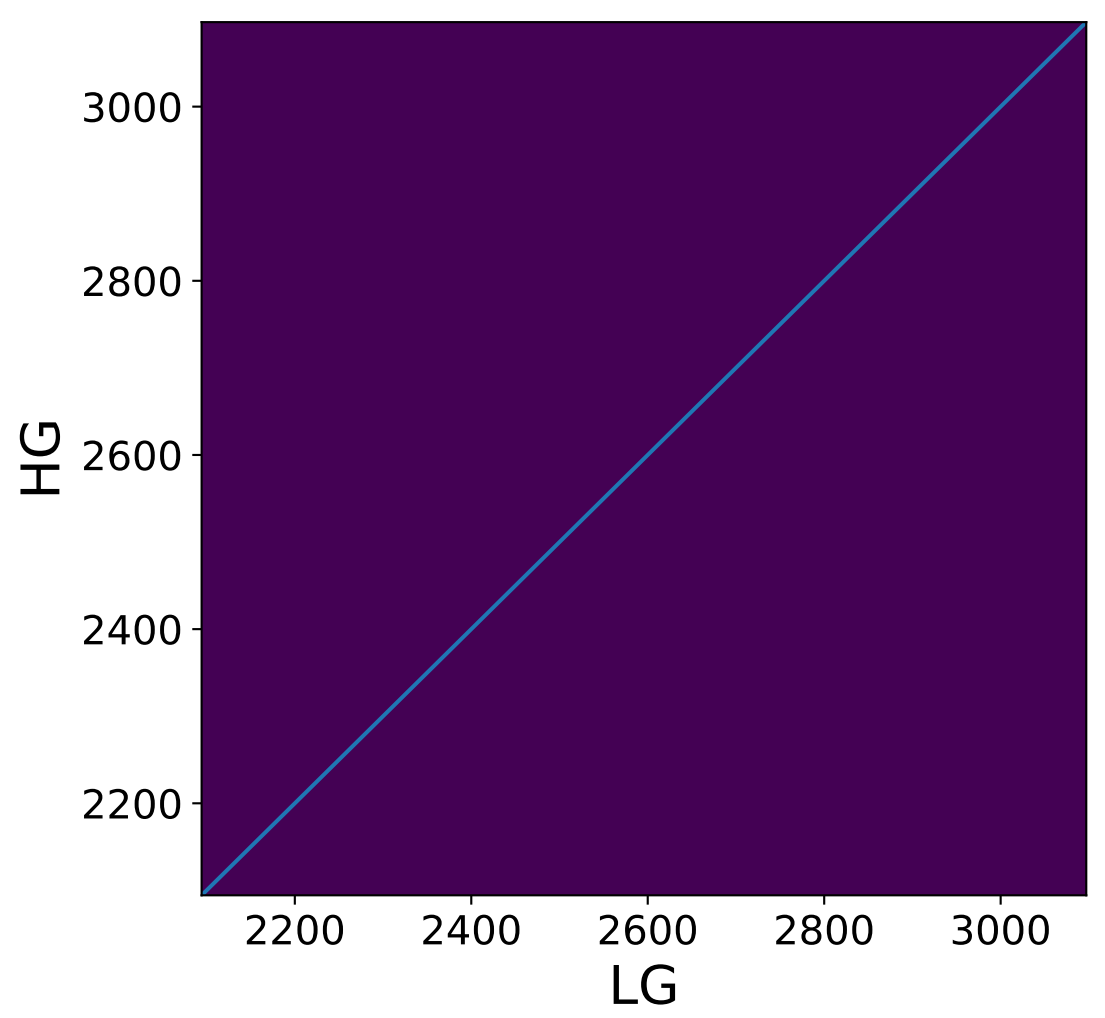
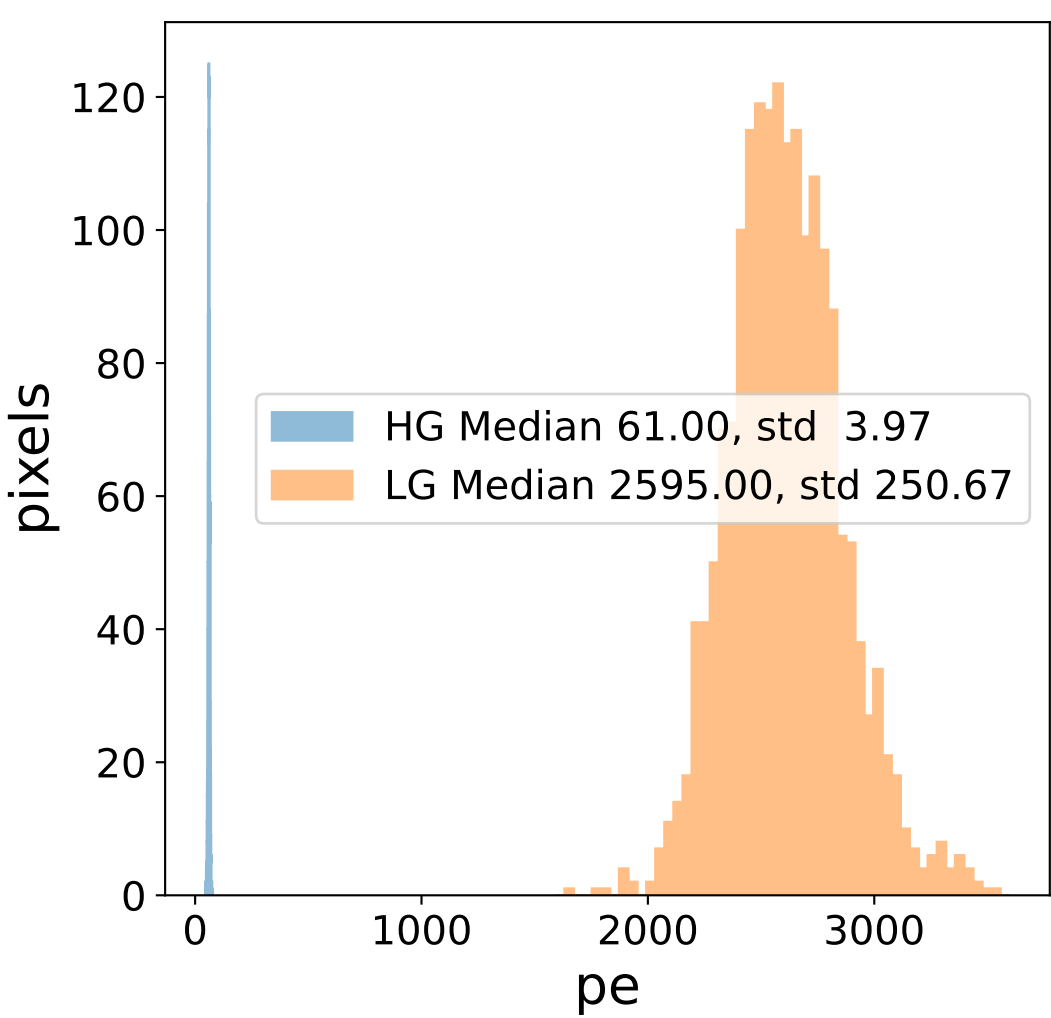
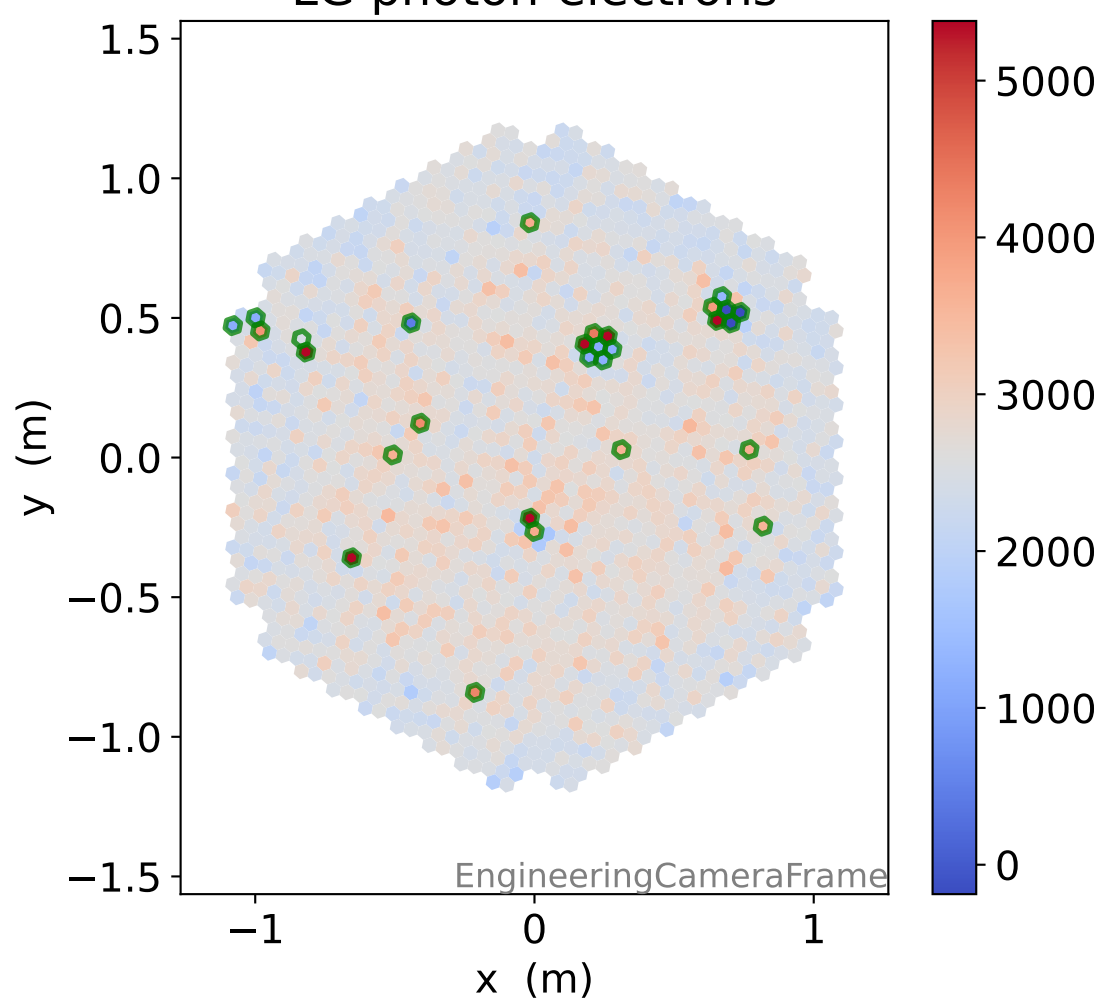
LG relative signal



HG photon-electrons

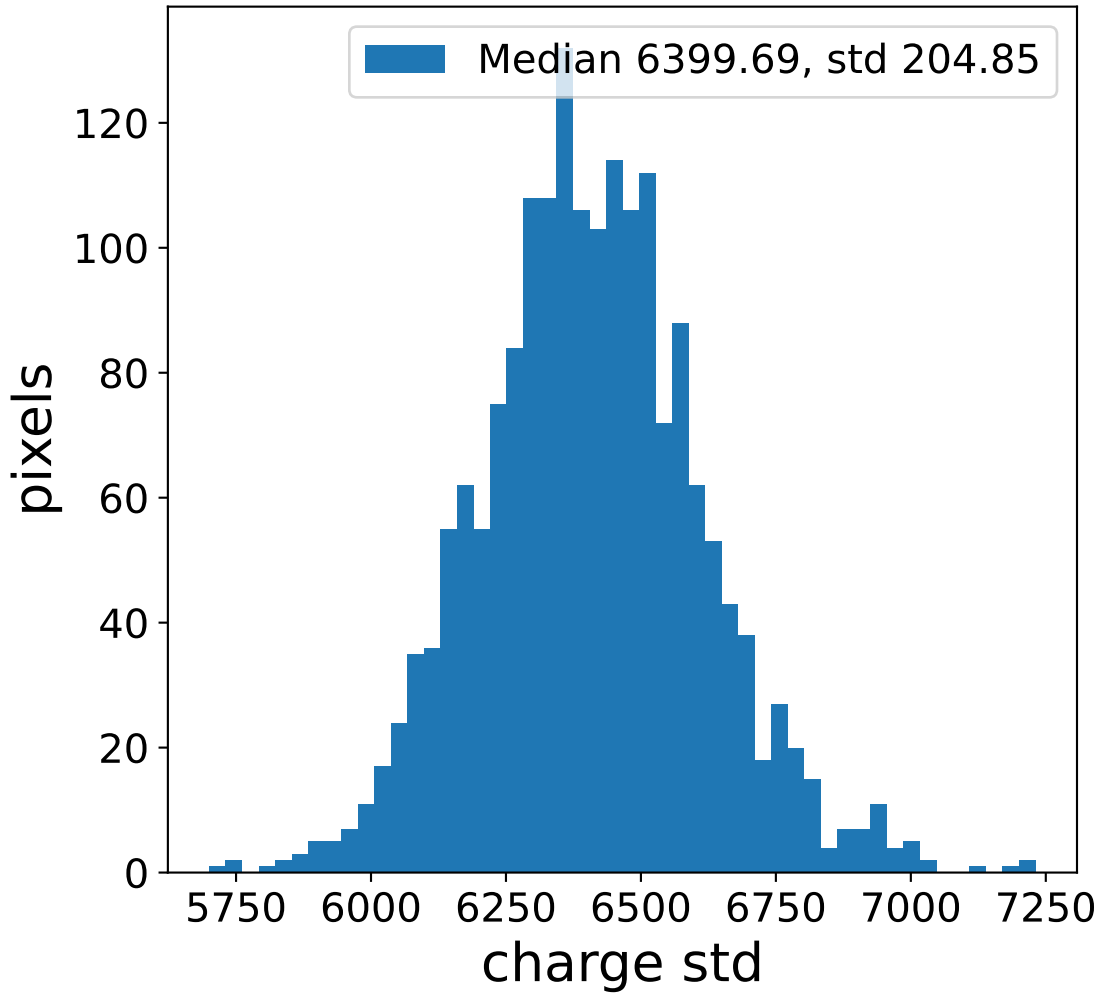
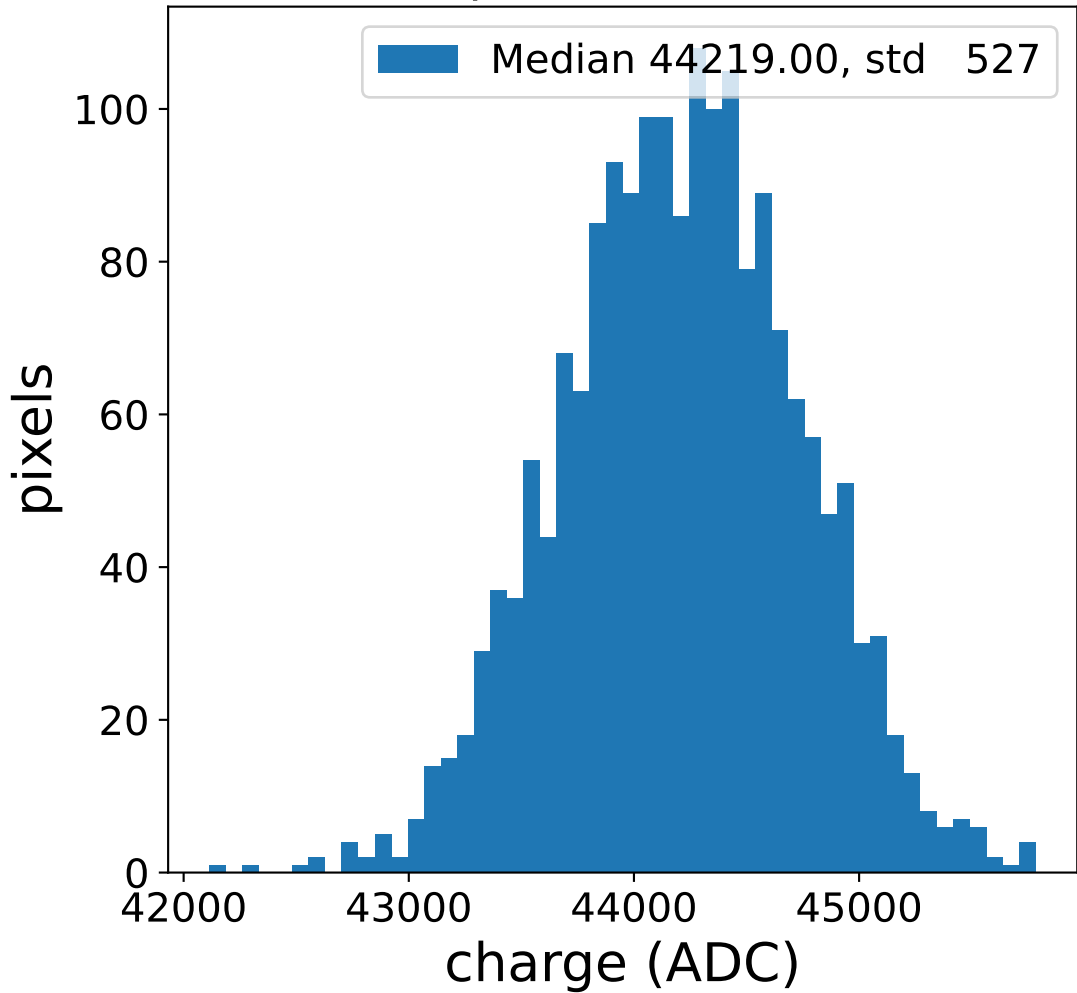


LG photon-electrons

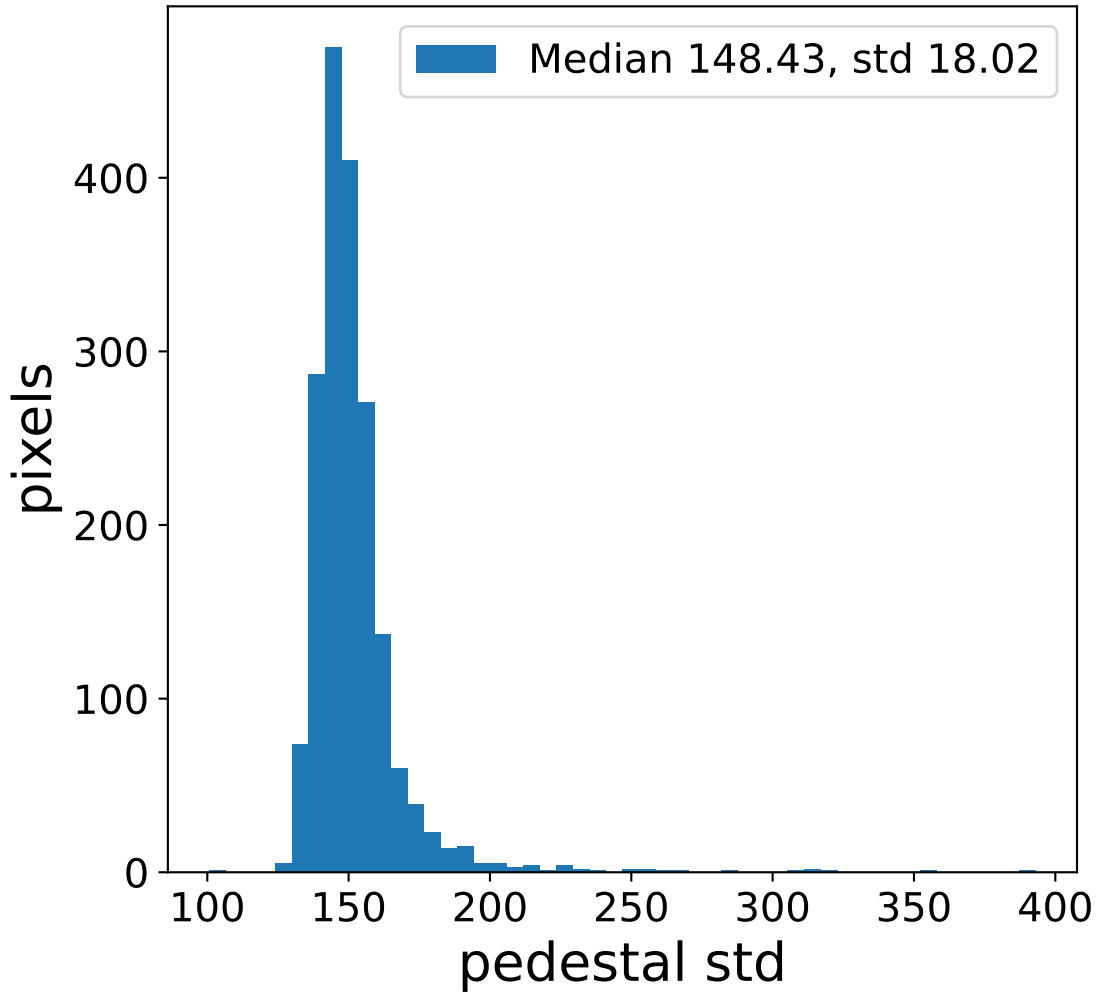
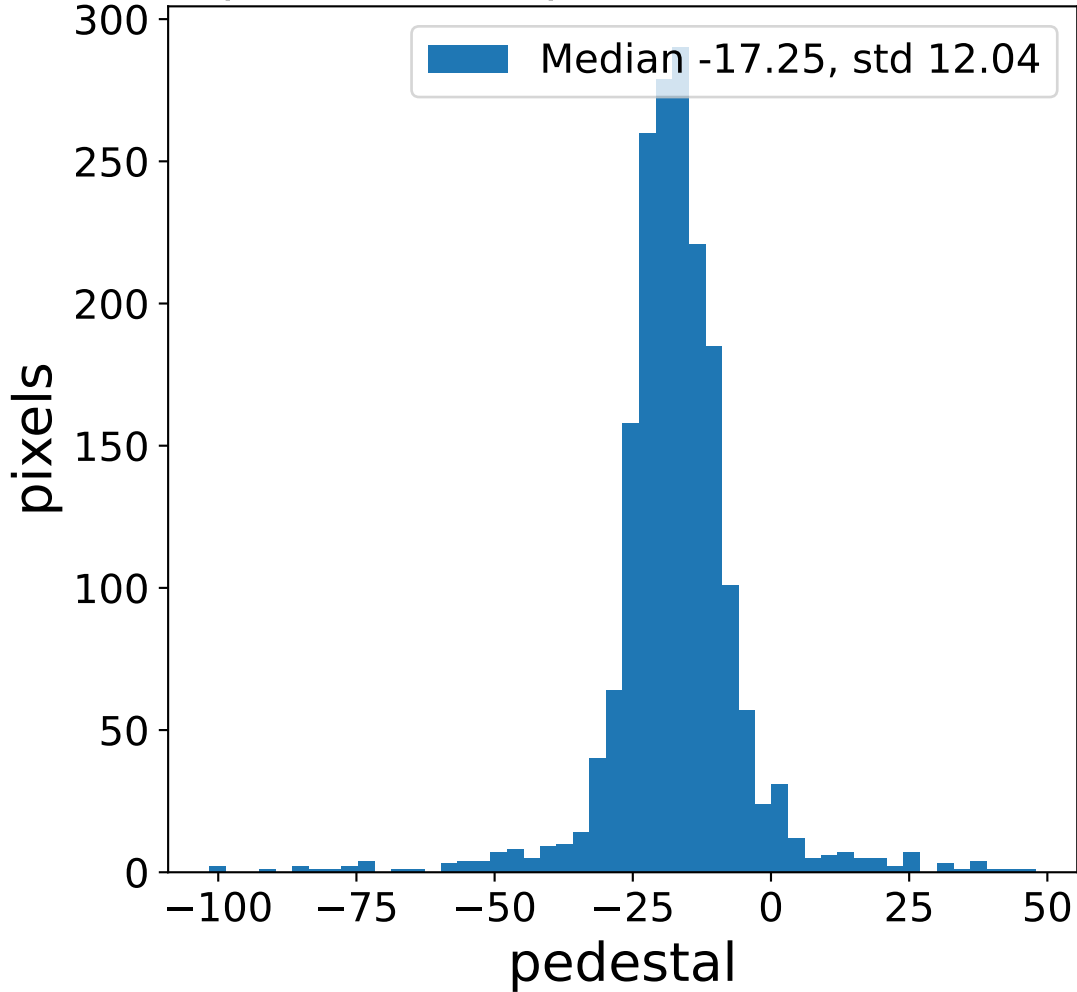


Run 15290 channel: HG

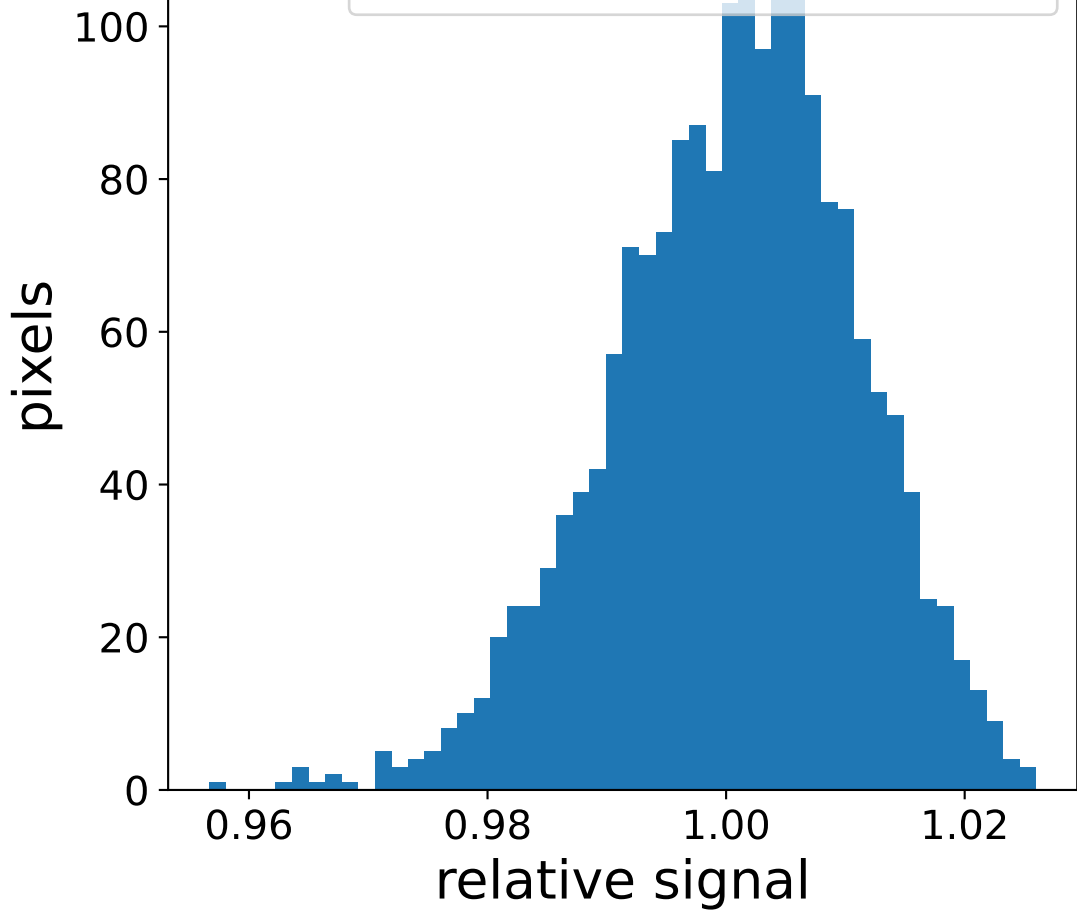
FF sample of 10000 events



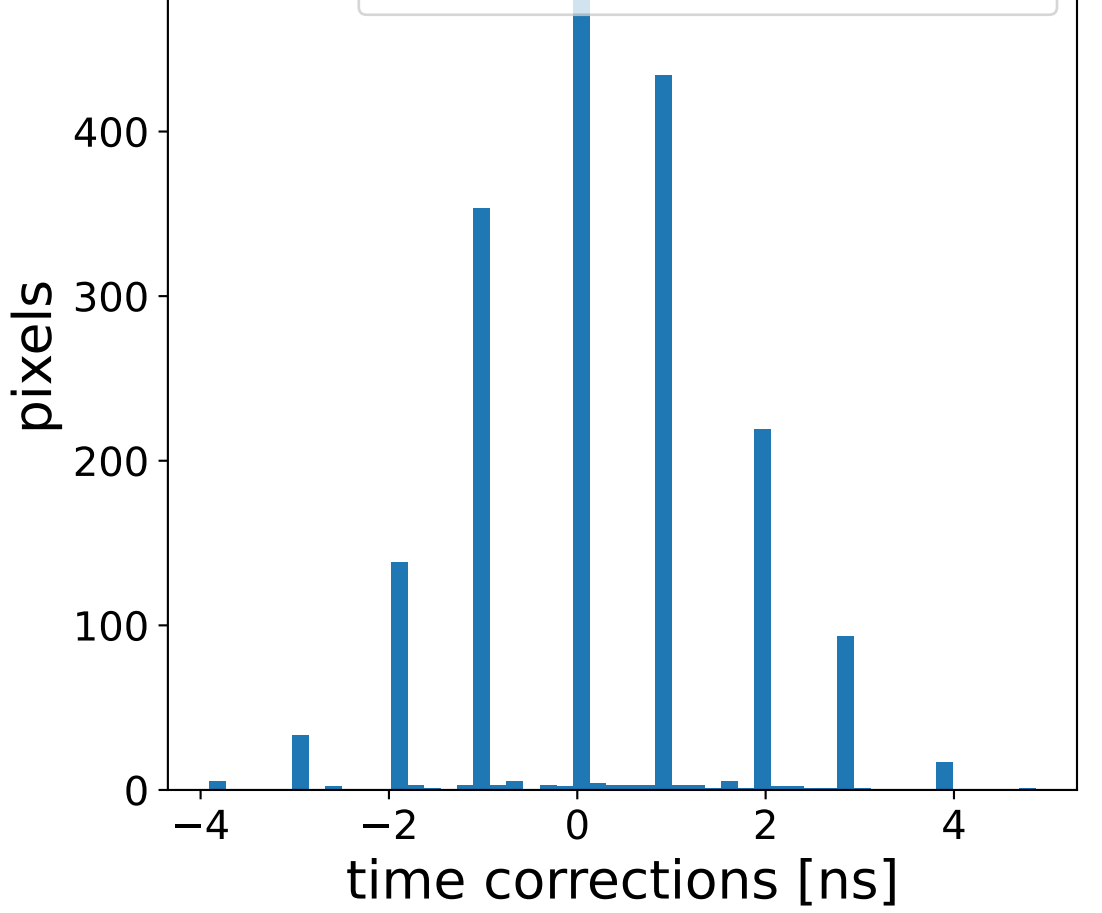
pedestal sample of 10000 events



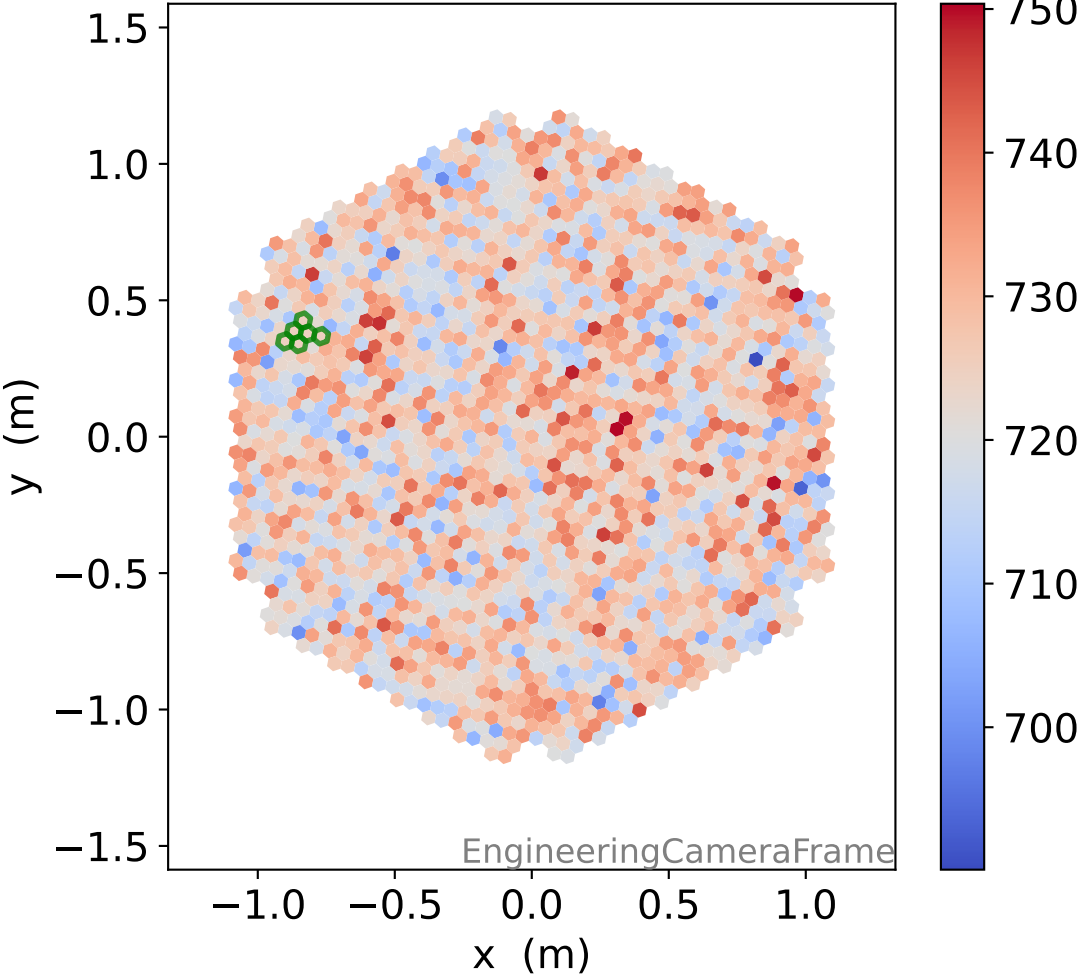
Relative gain 1.00, std 0.01



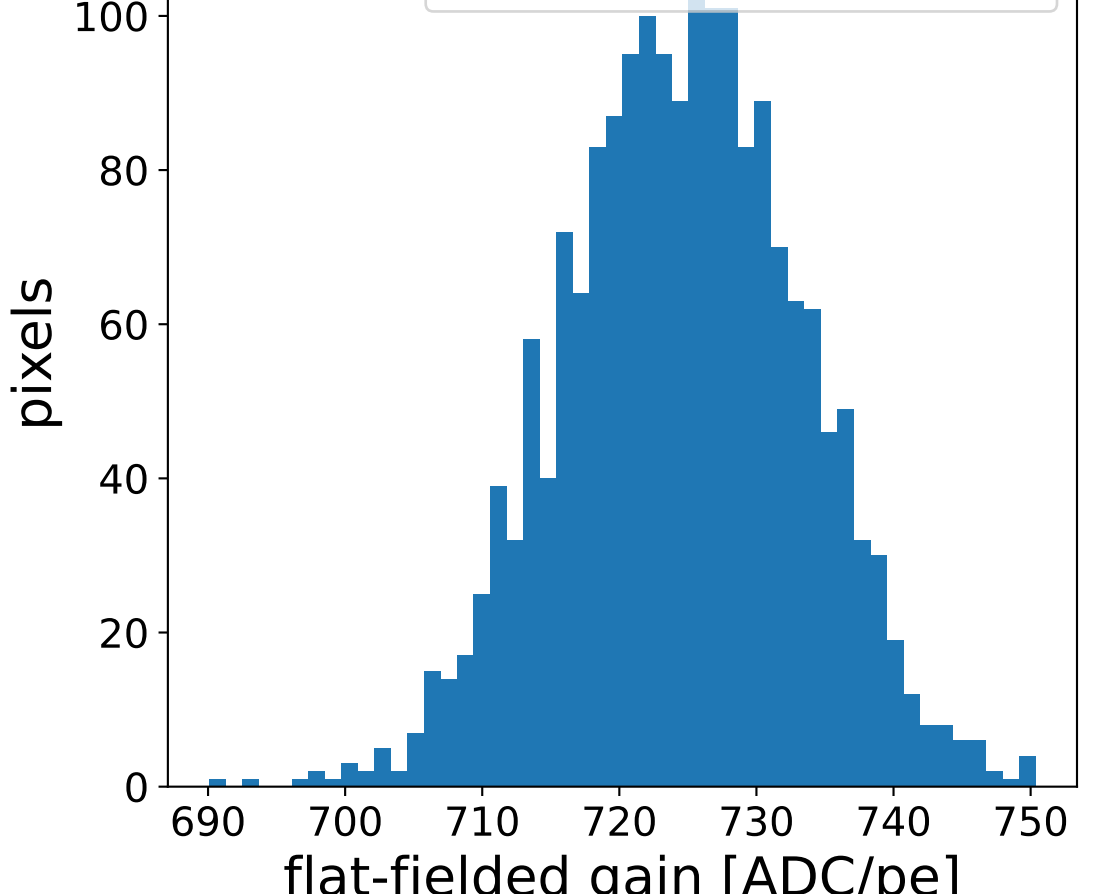
Median 0.00 ns, std 1.38 ns



flat-fielded gain [ADC/pe]

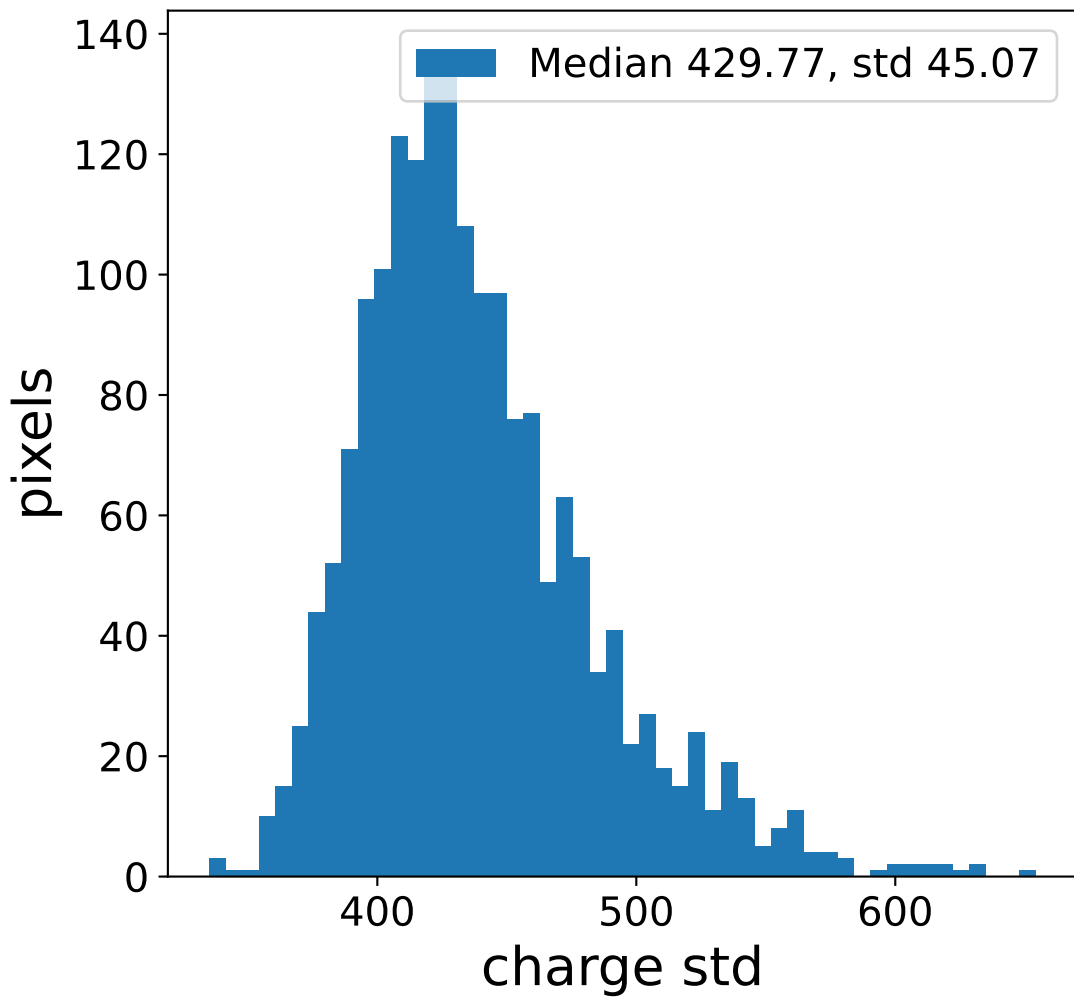
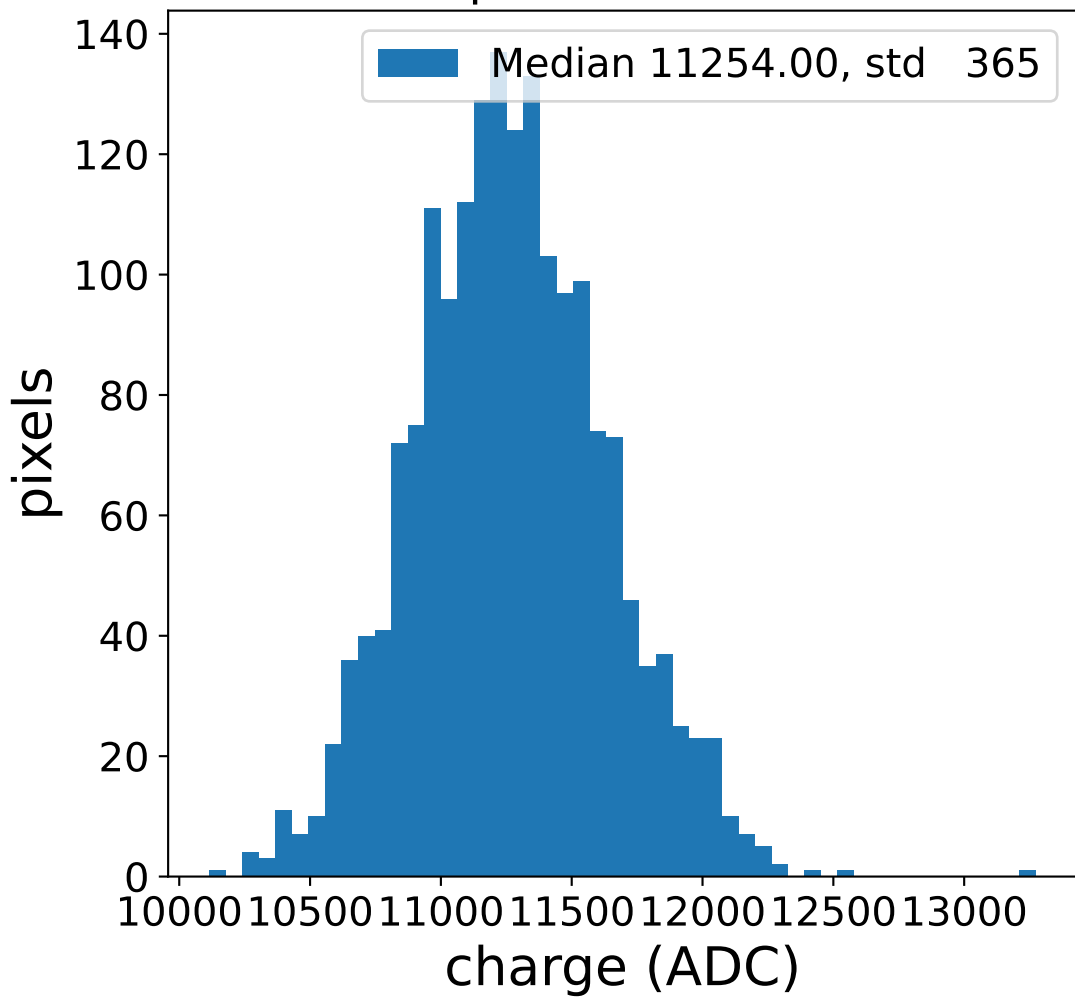


Median 724.73, std 8.63

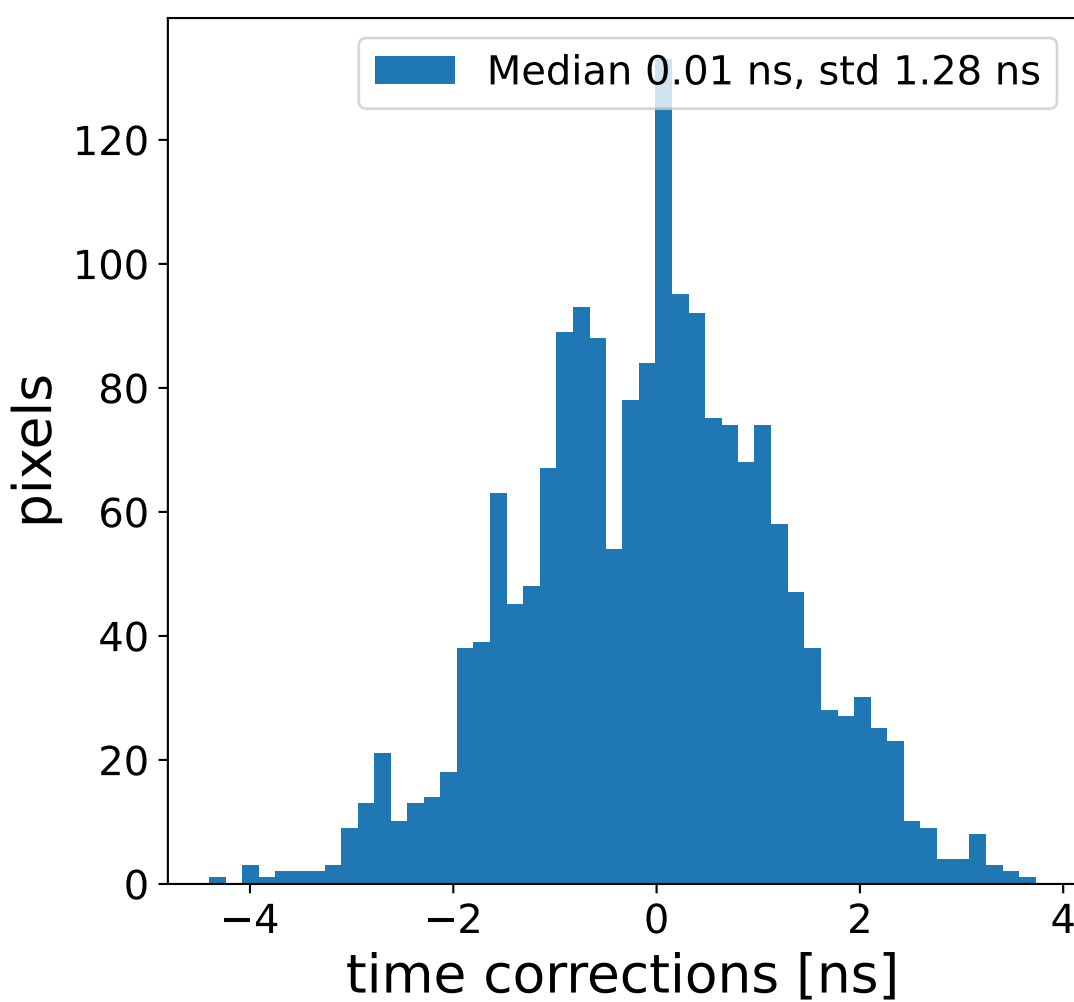
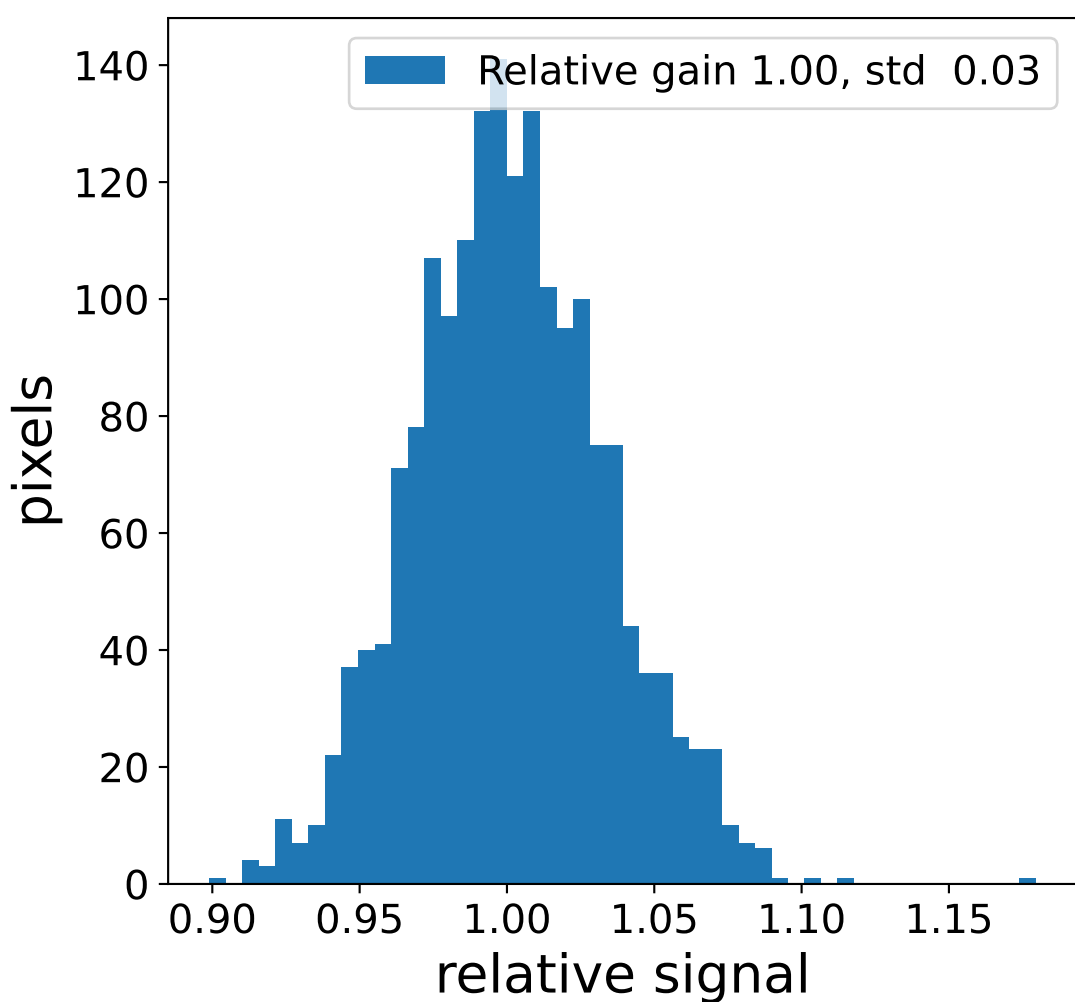
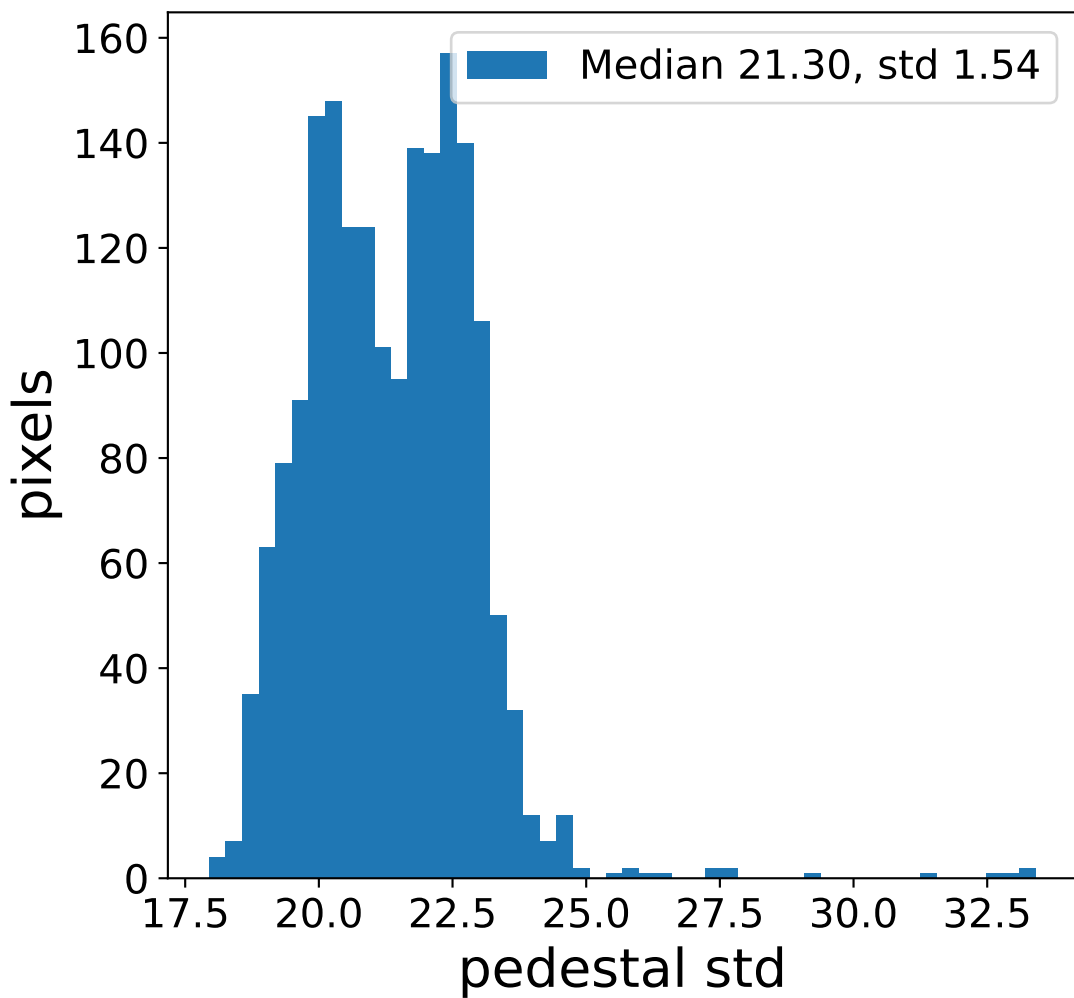
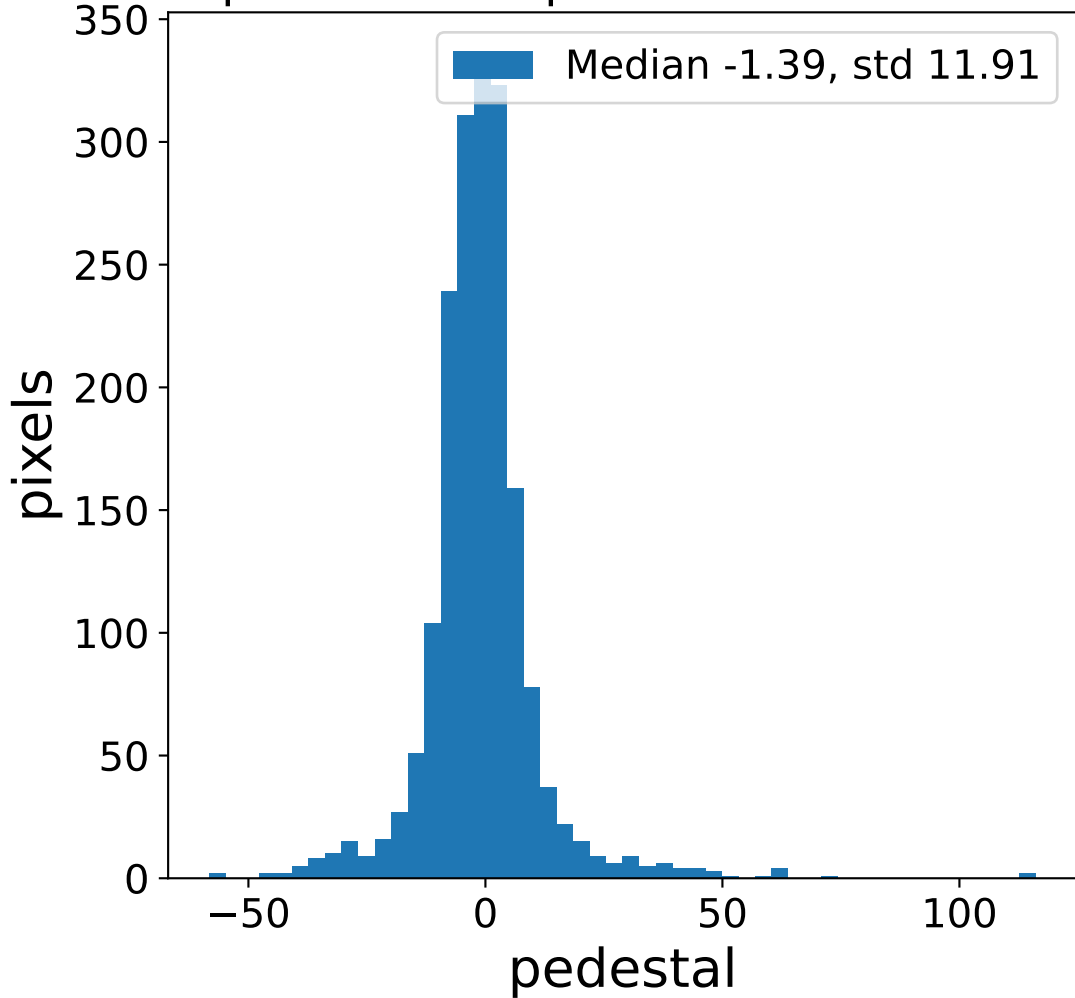


Run 15290 channel: LG

FF sample of 10000 events



pedestal sample of 10000 events



flat-fielded gain [ADC/pe]

