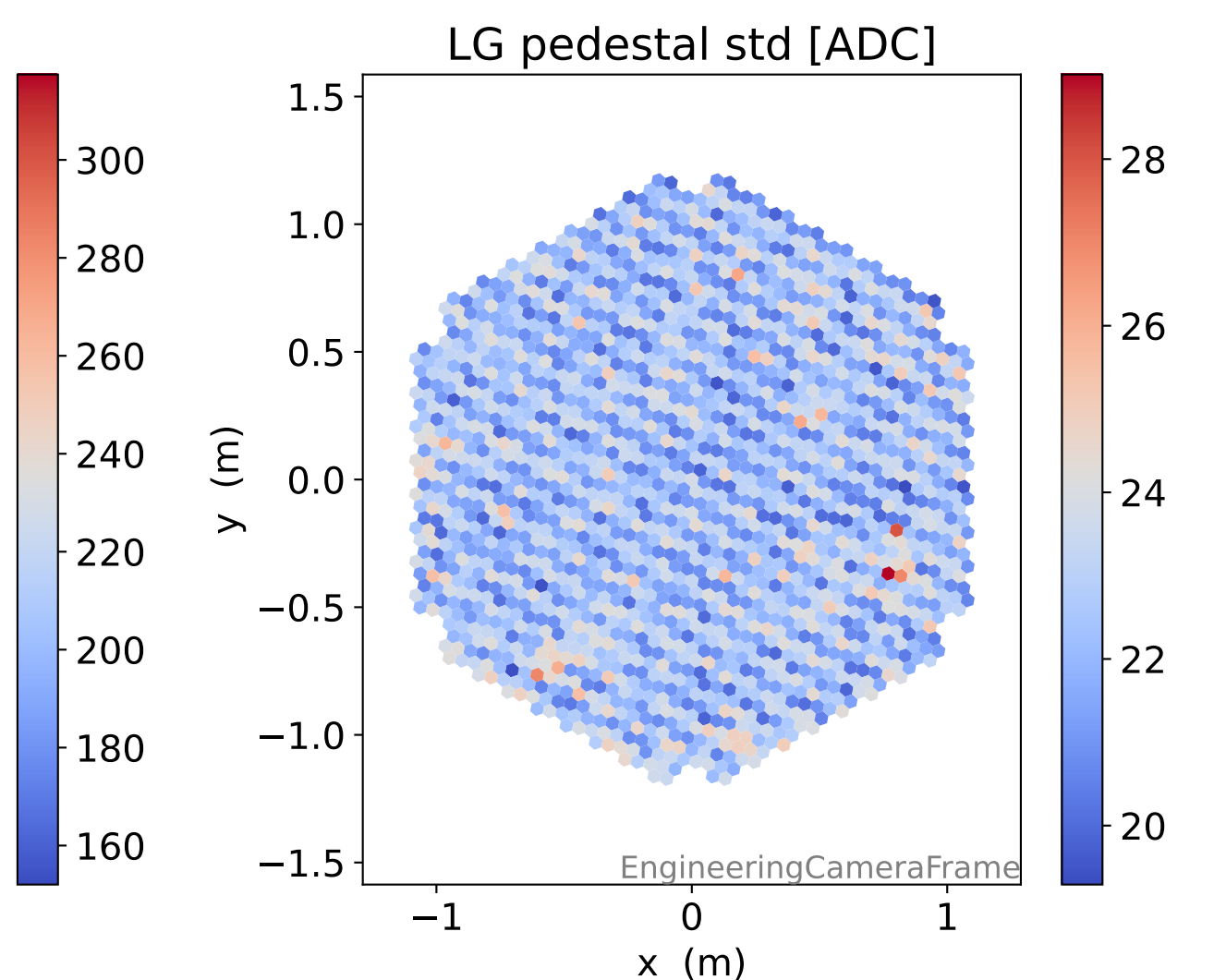
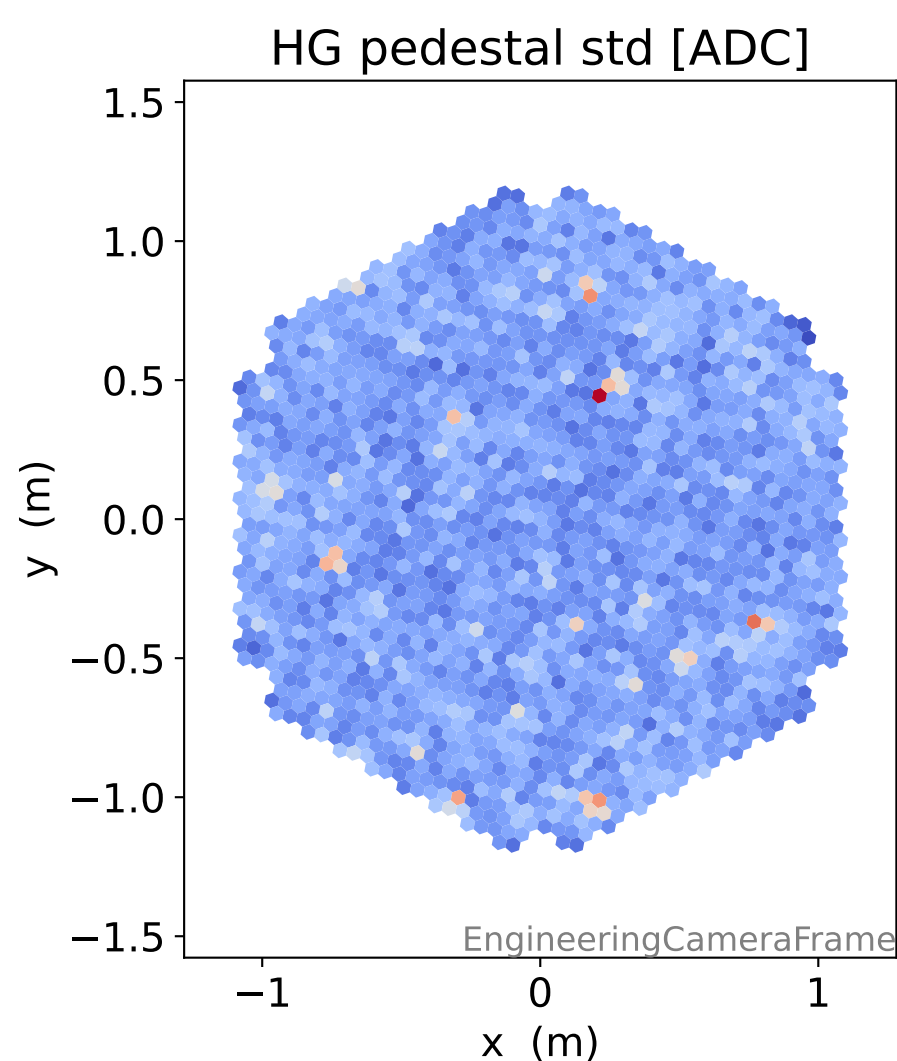
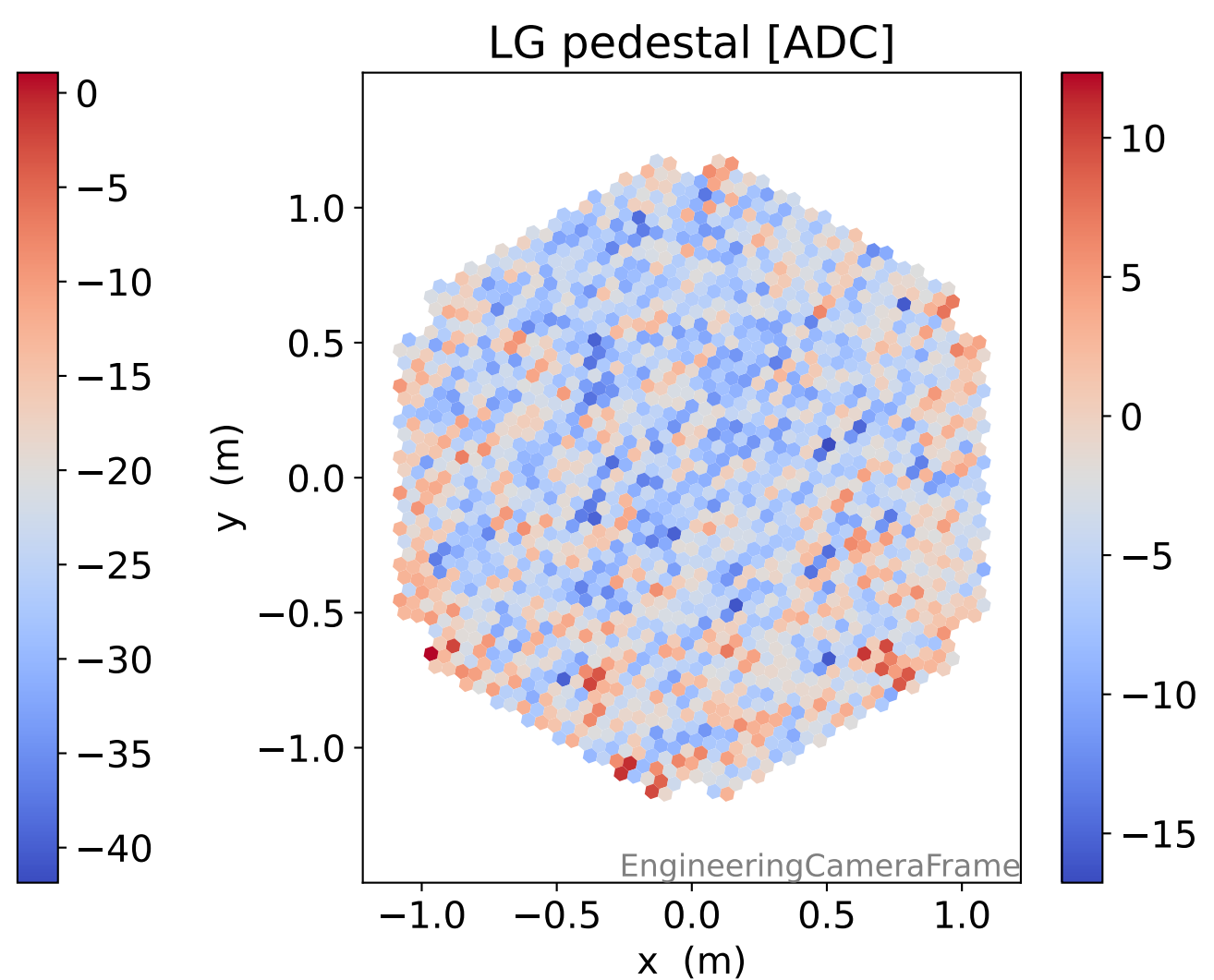
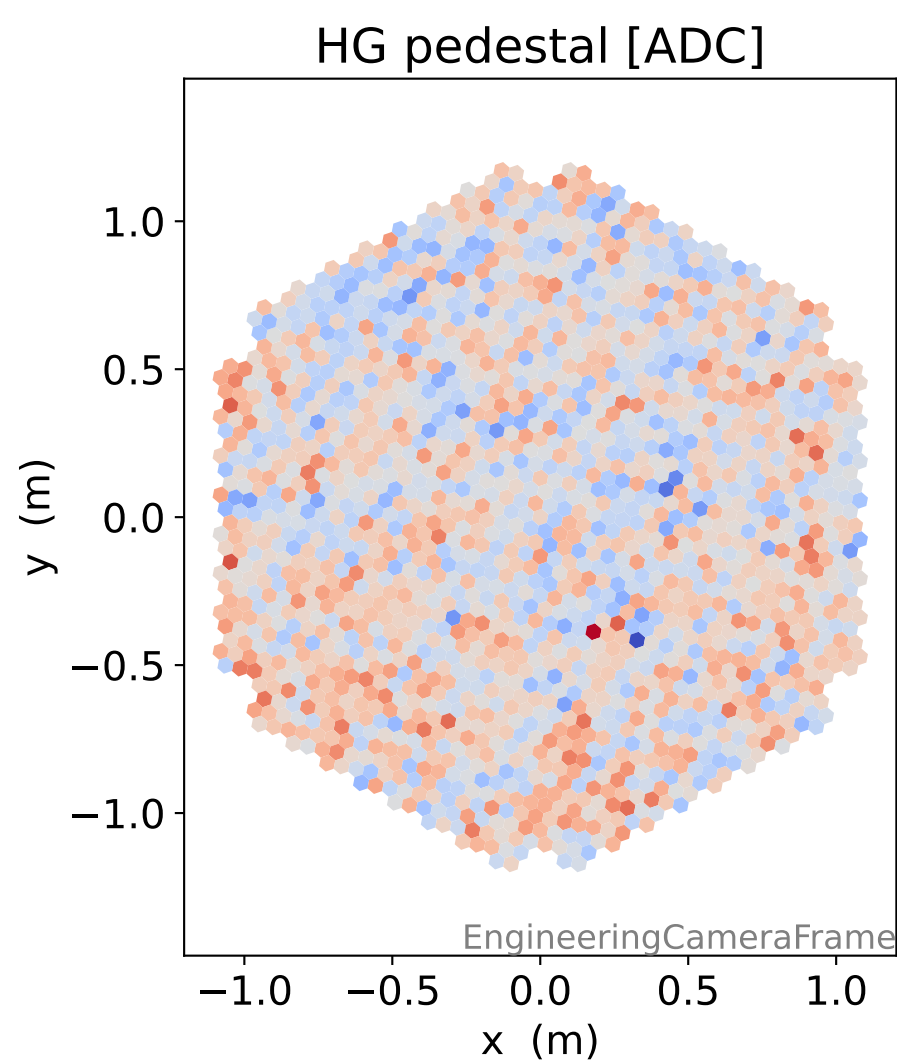
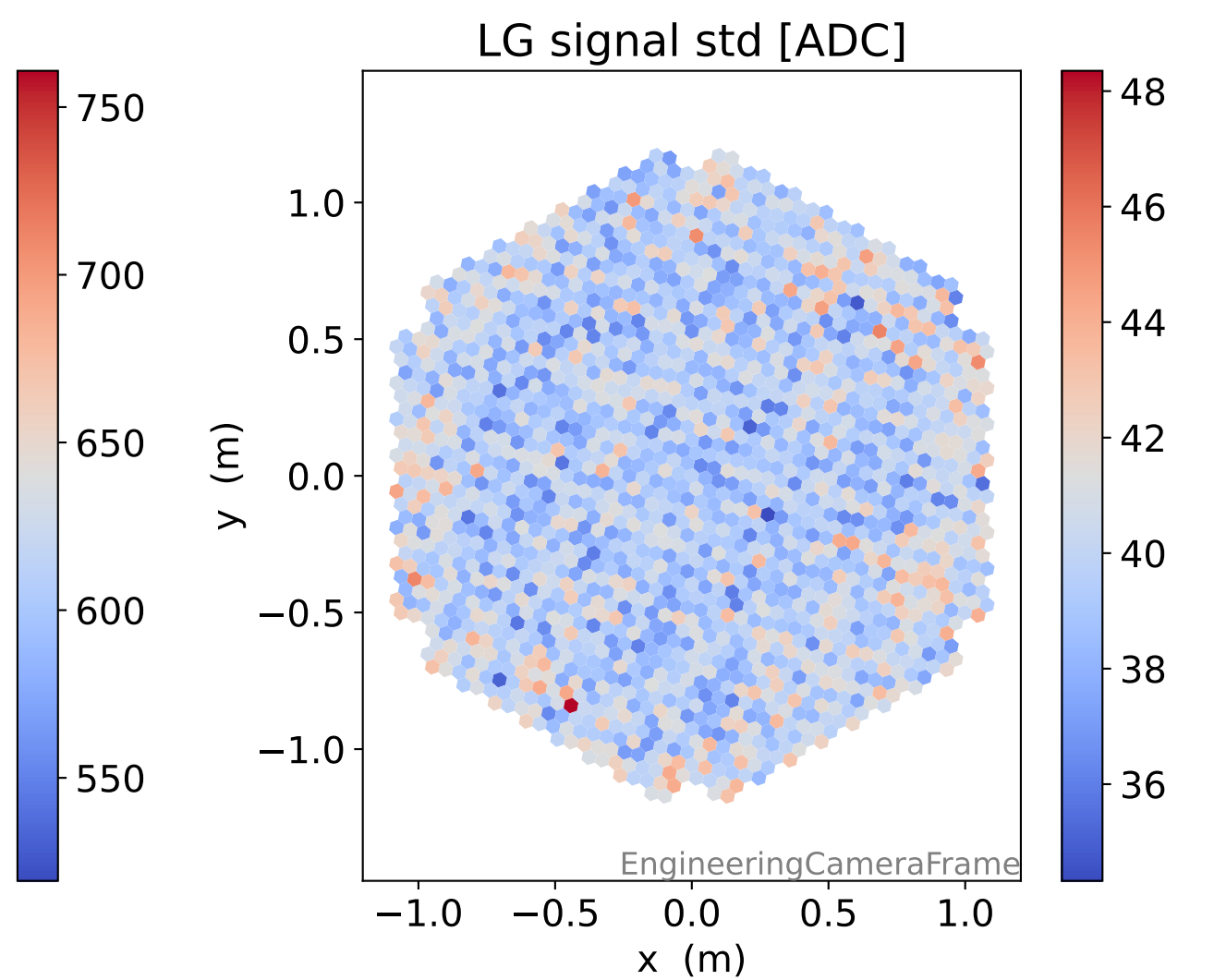
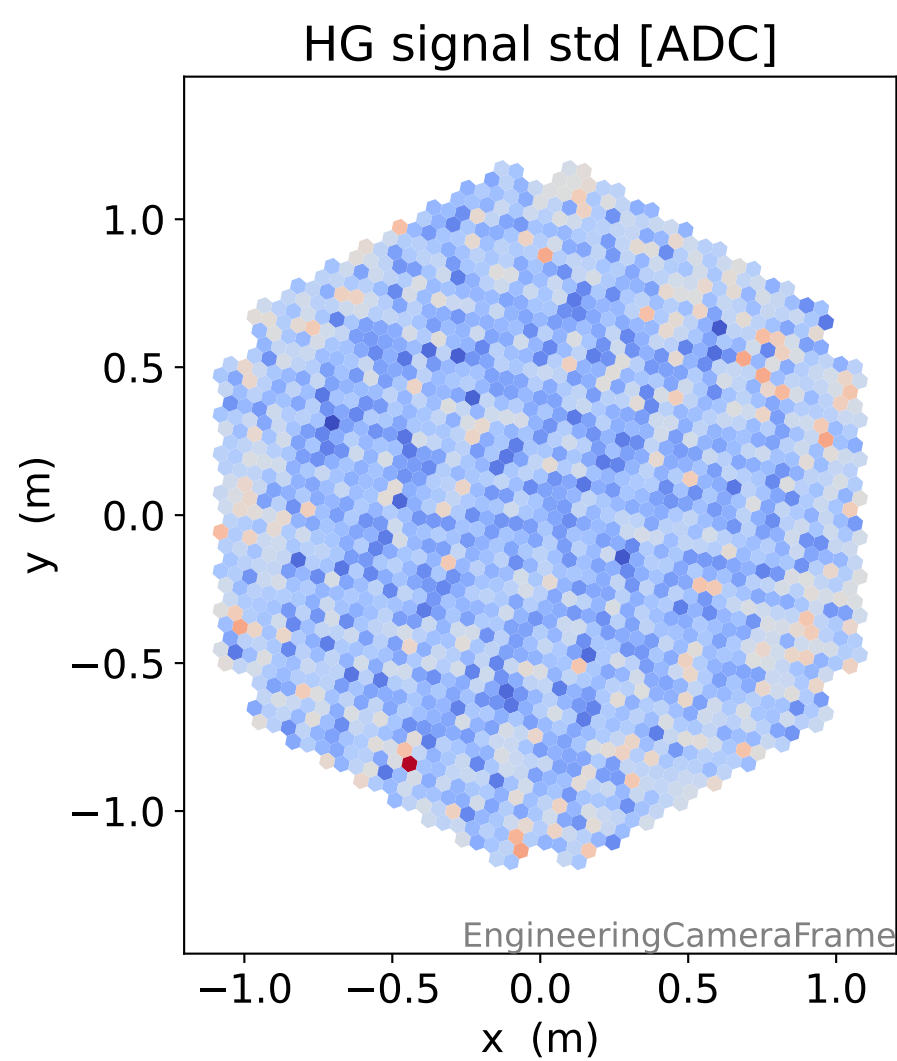
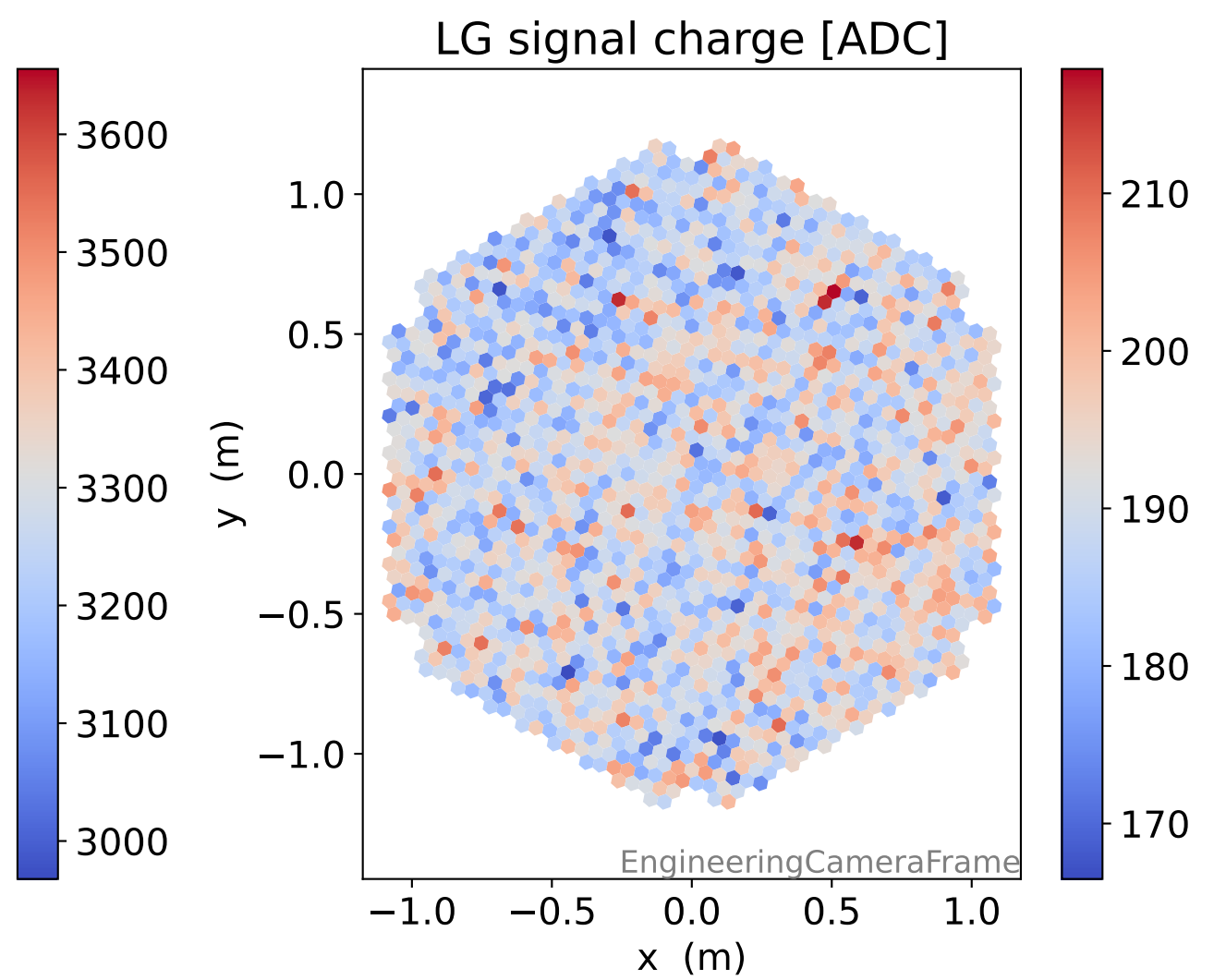
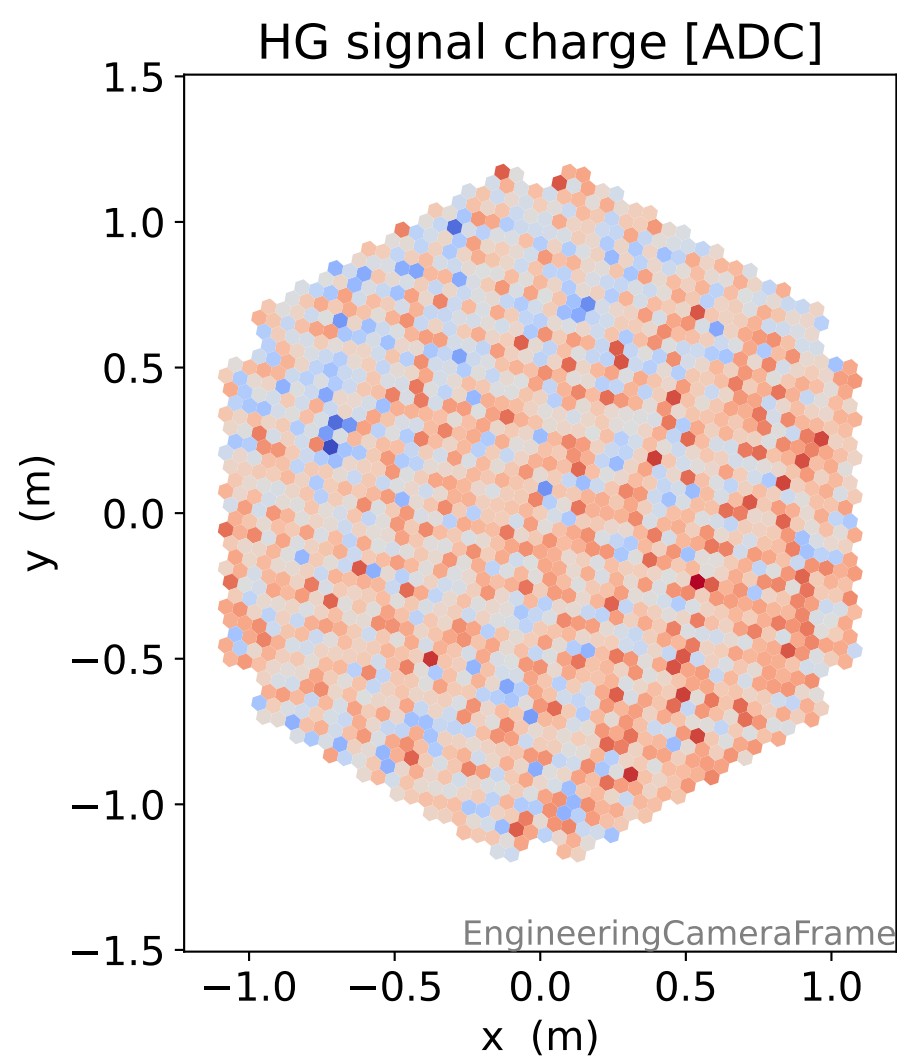
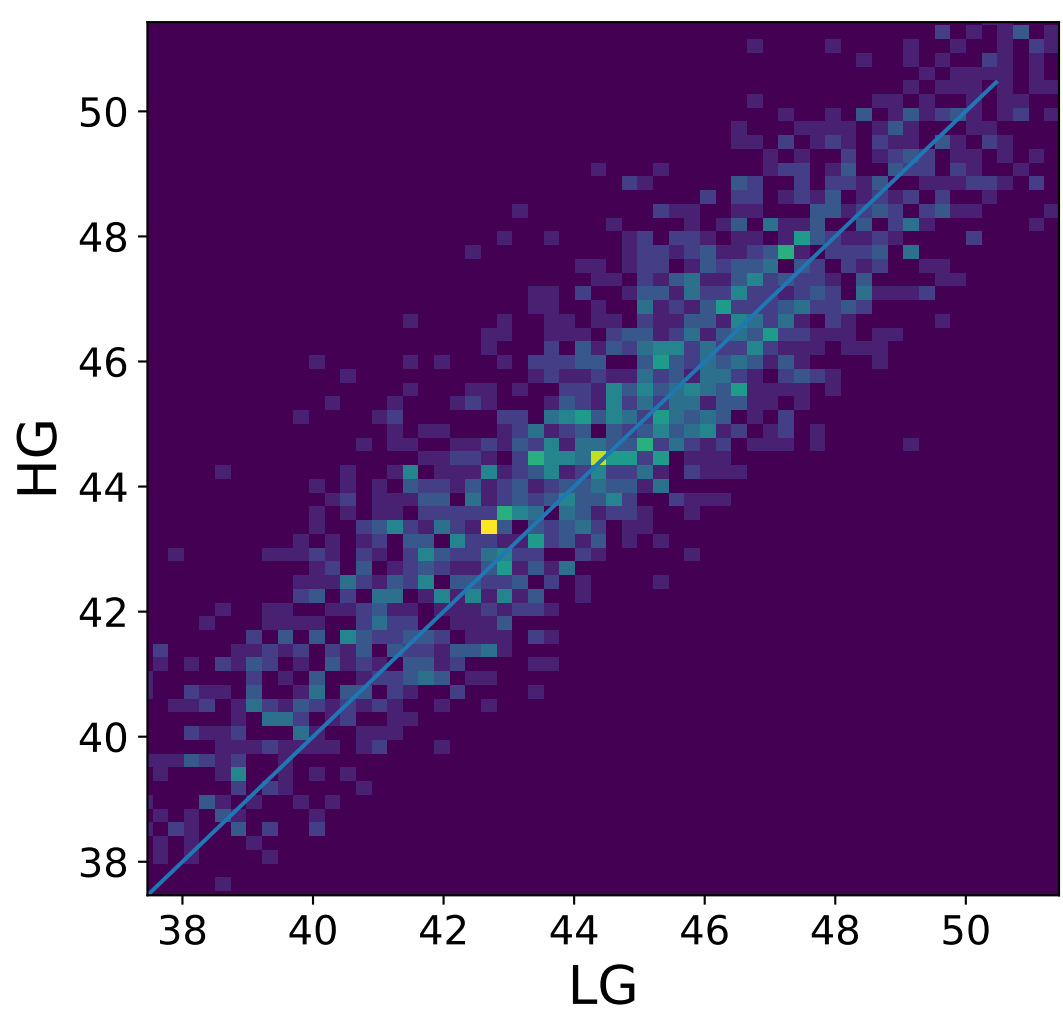
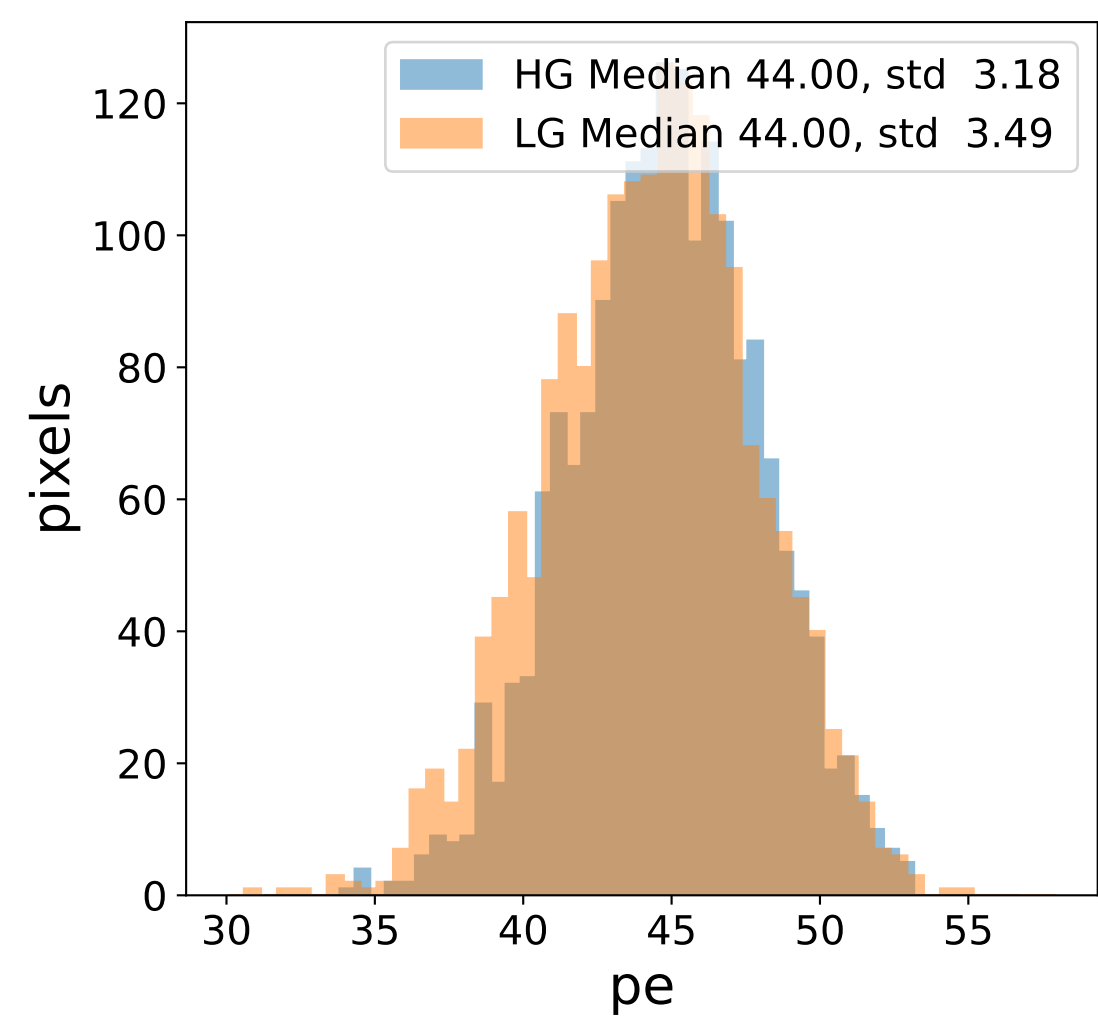
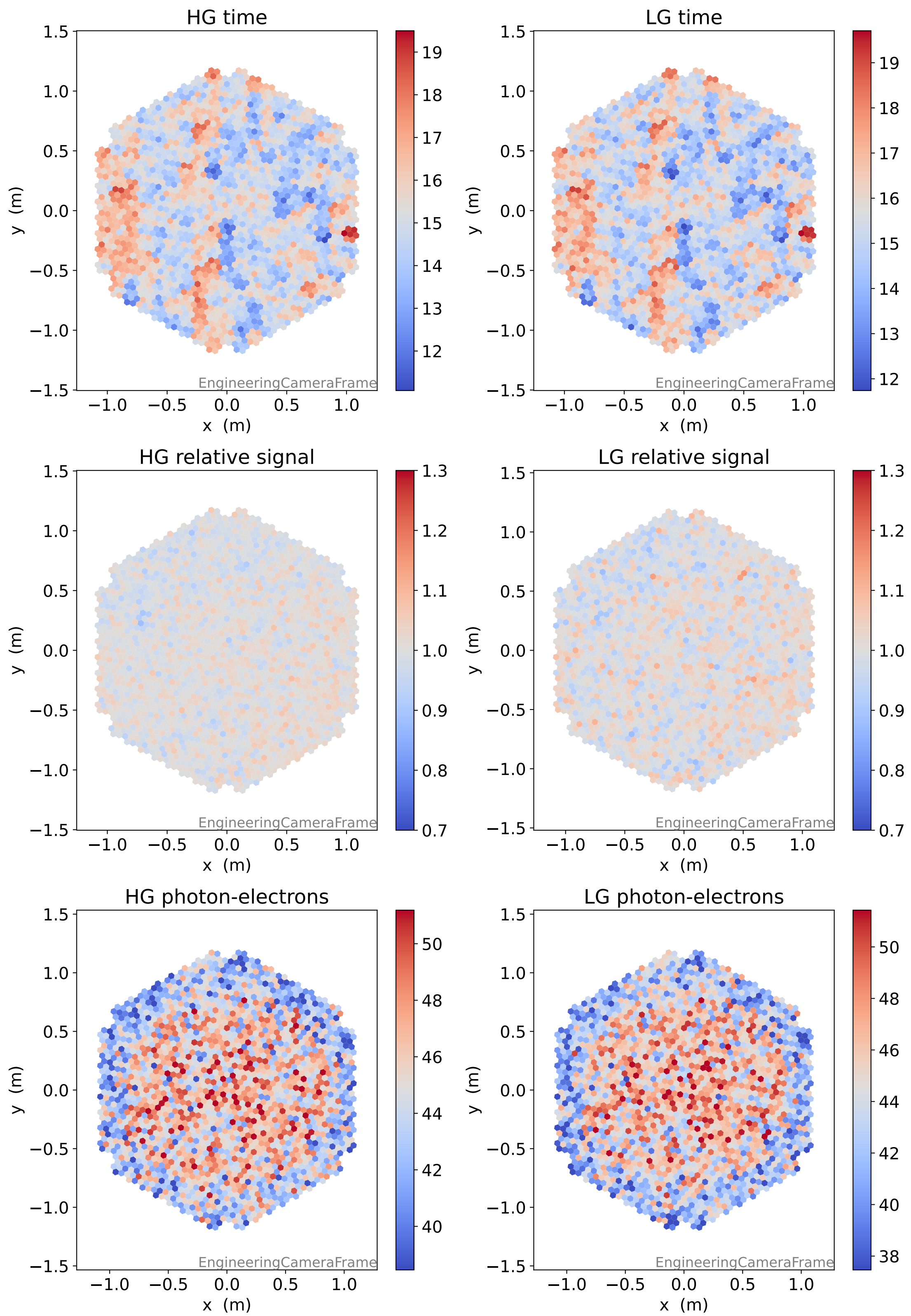


# Run 13747

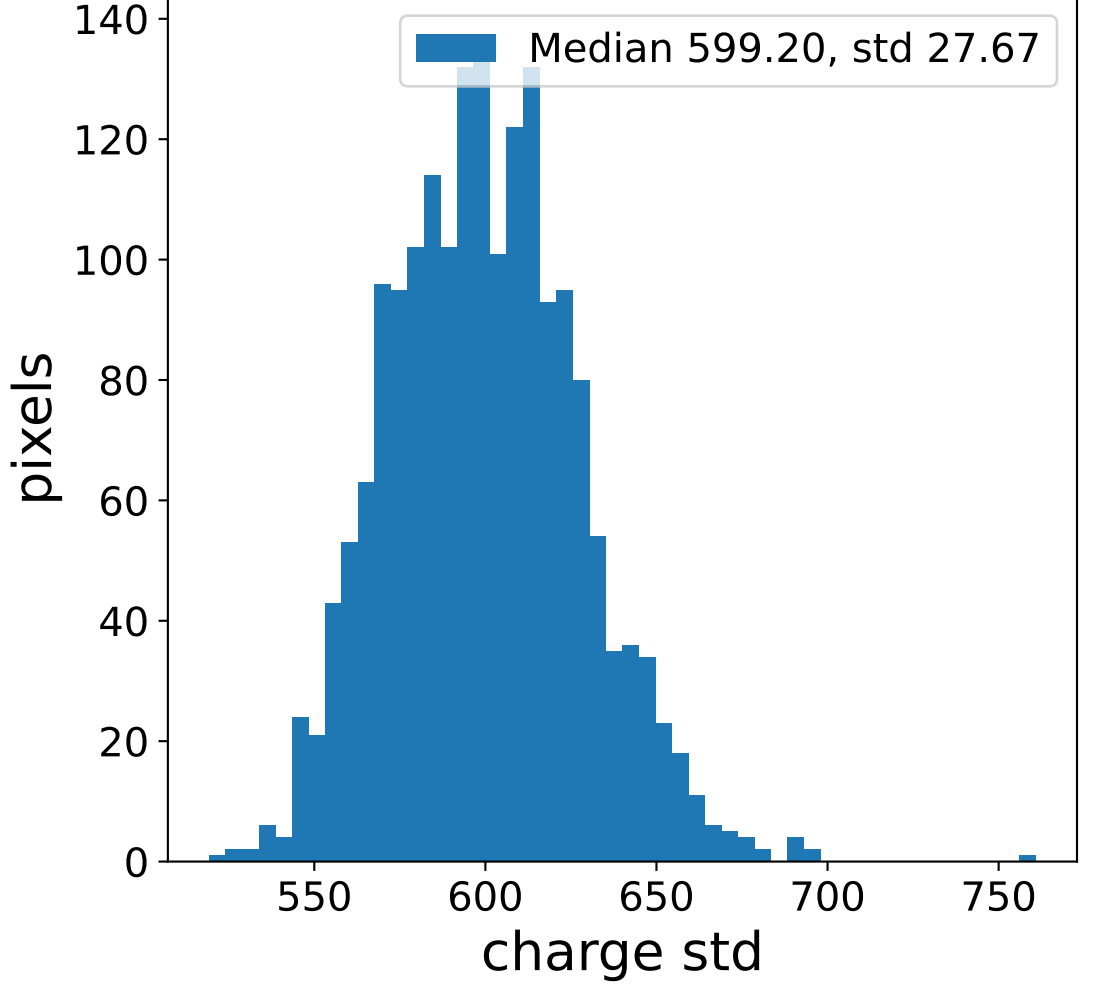
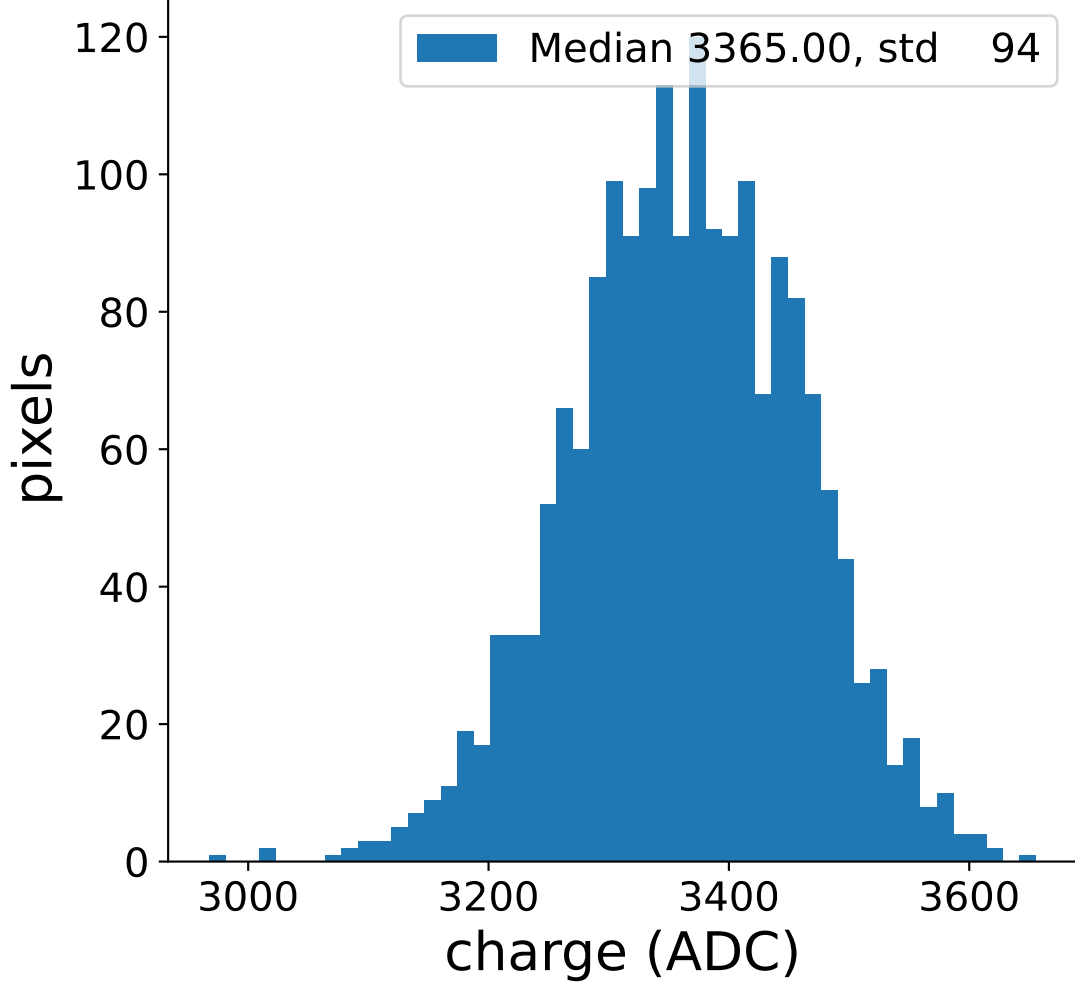


# Run 13747

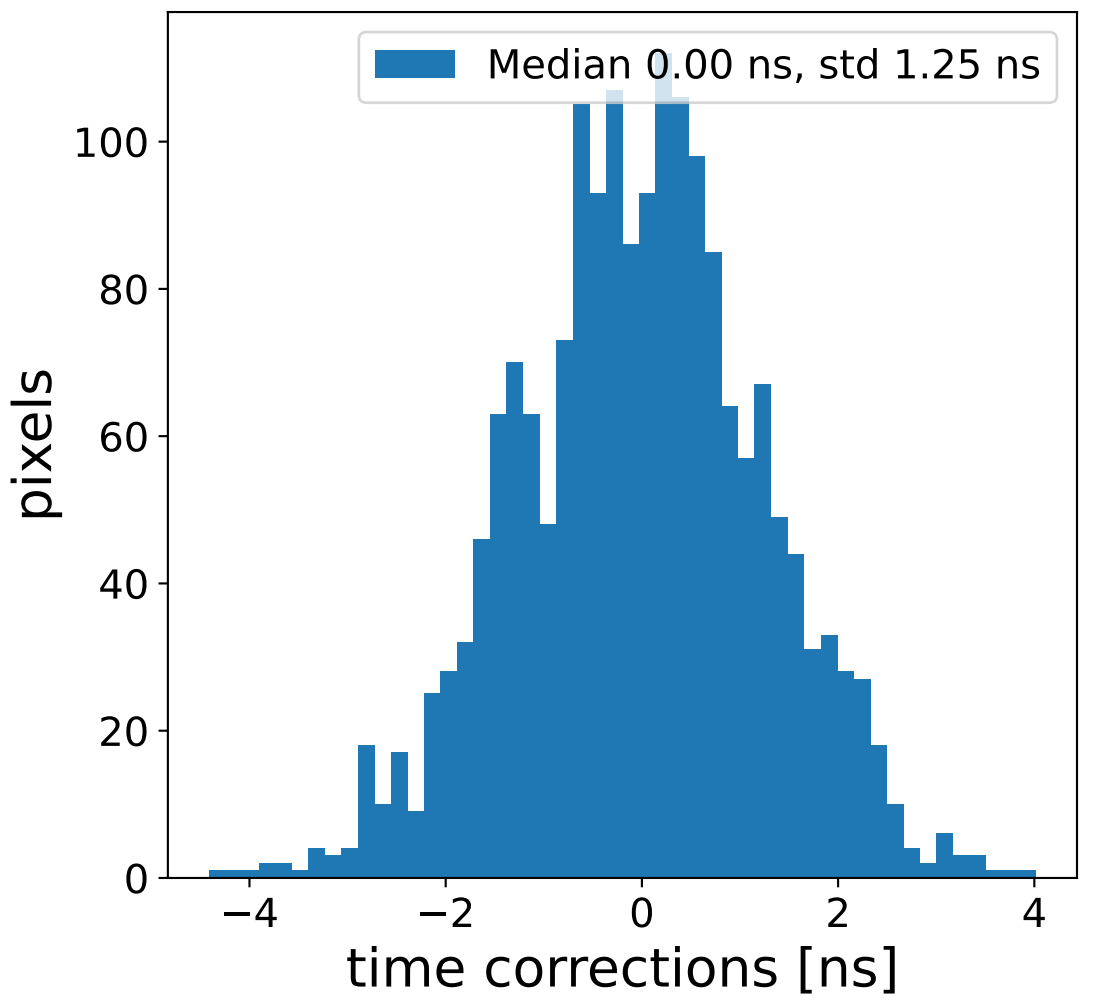
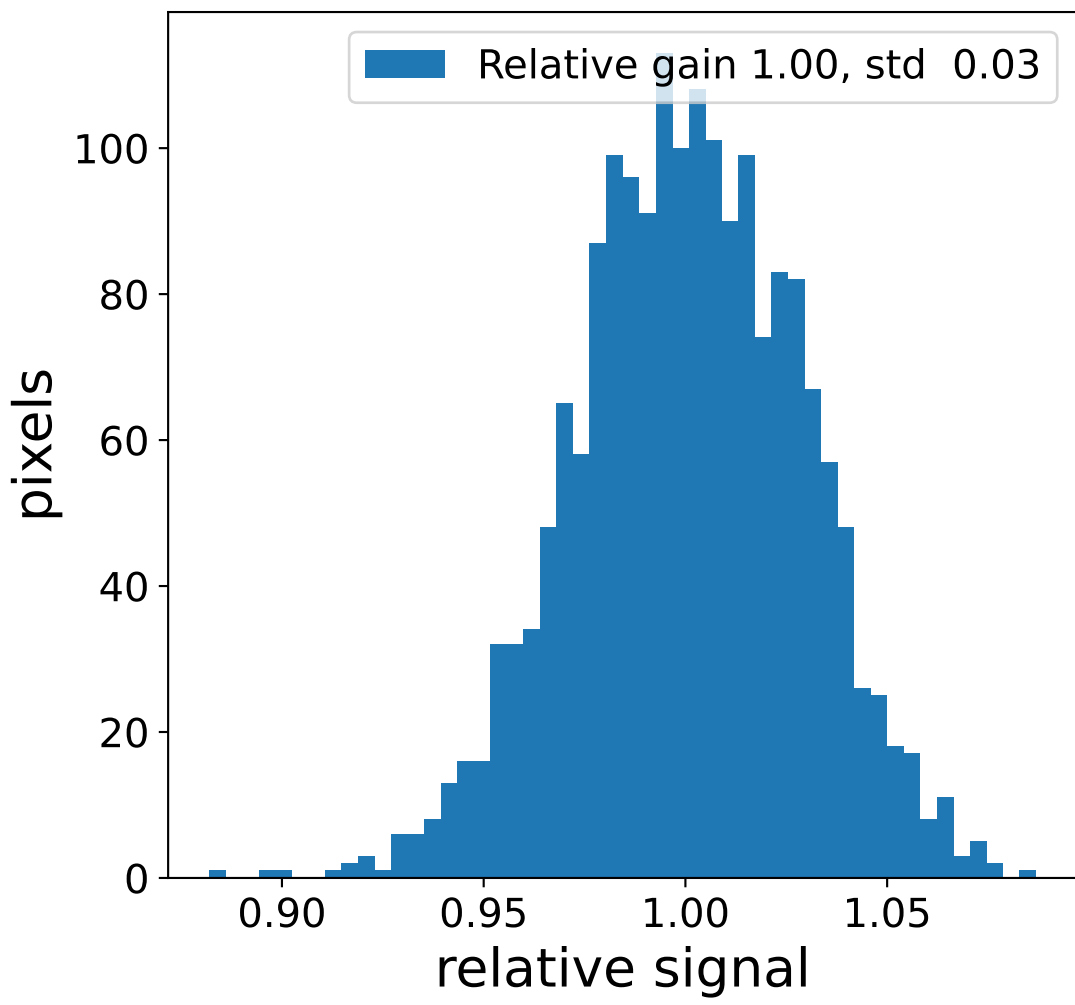
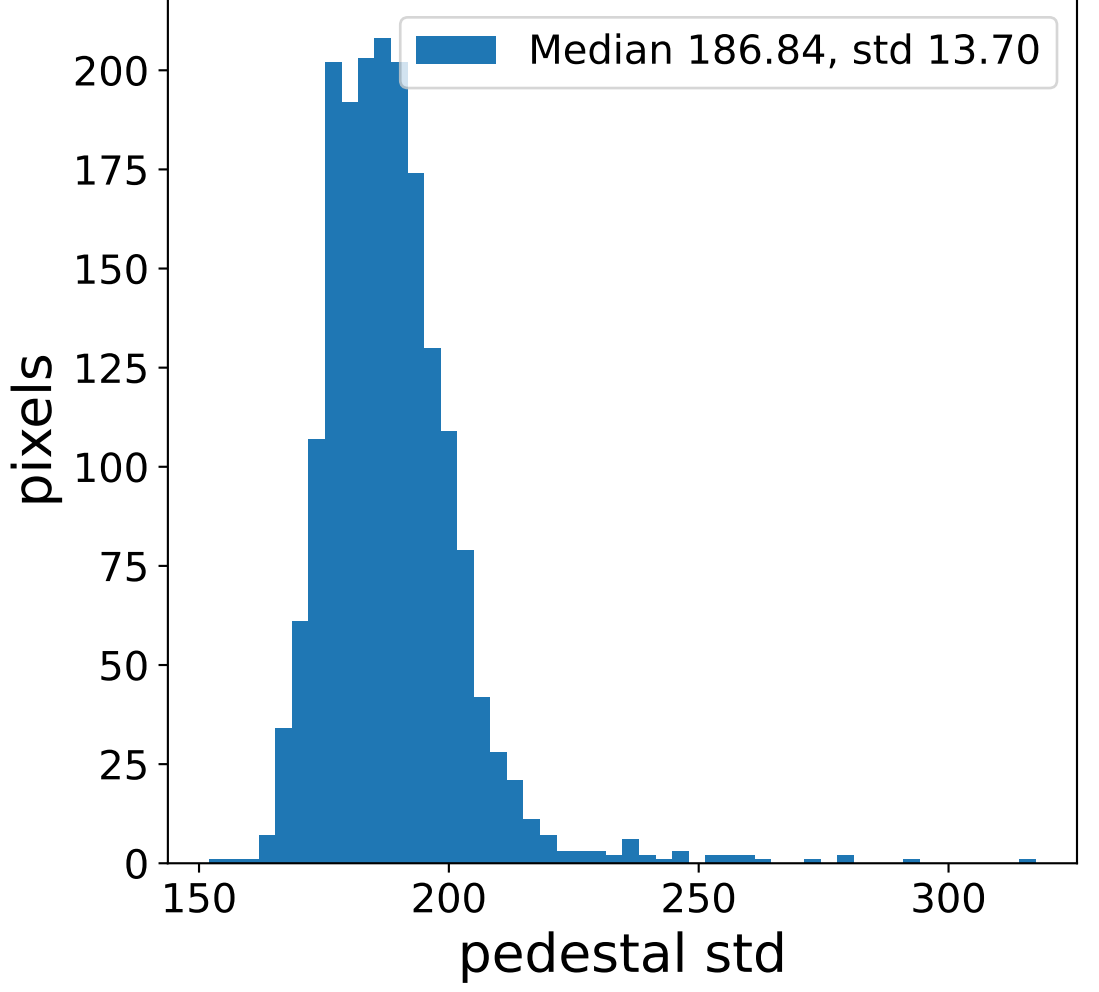
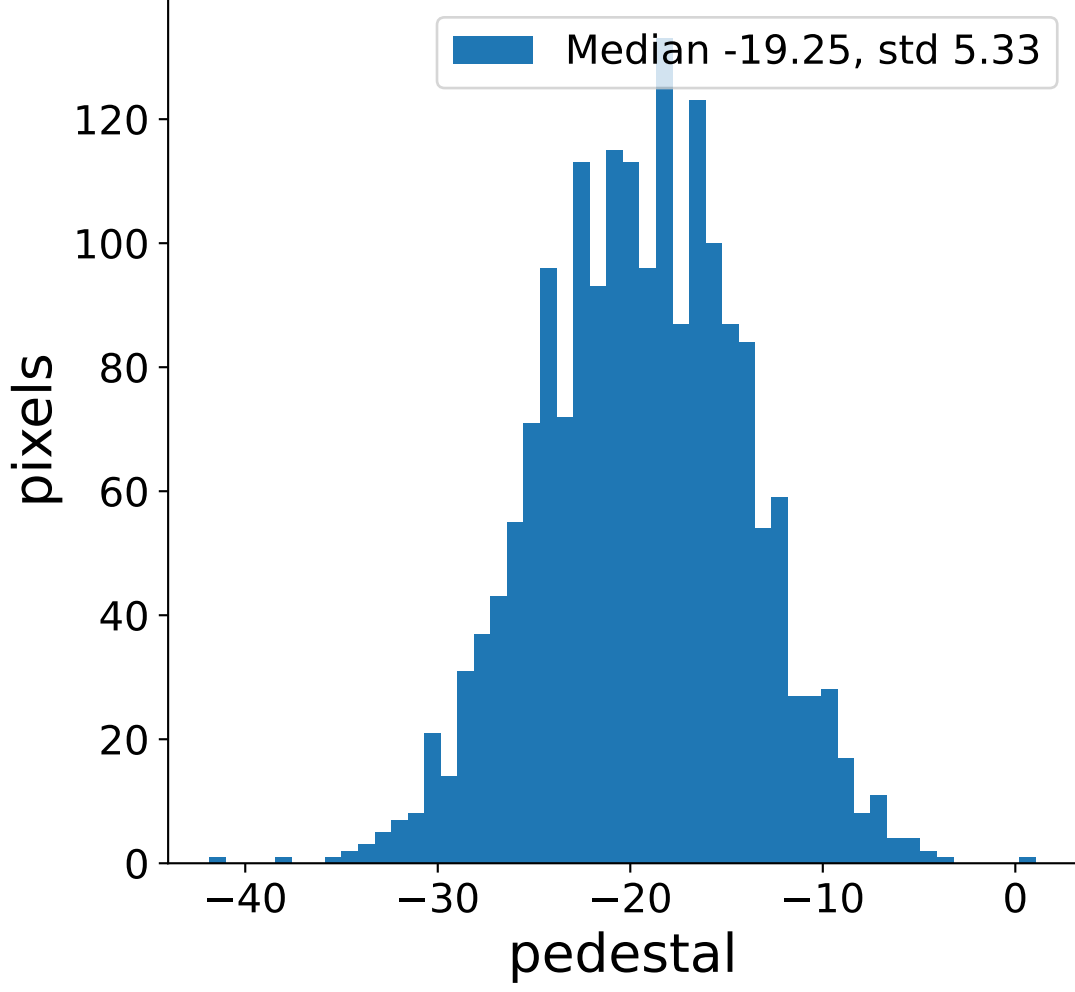


# Run 13747 channel: HG

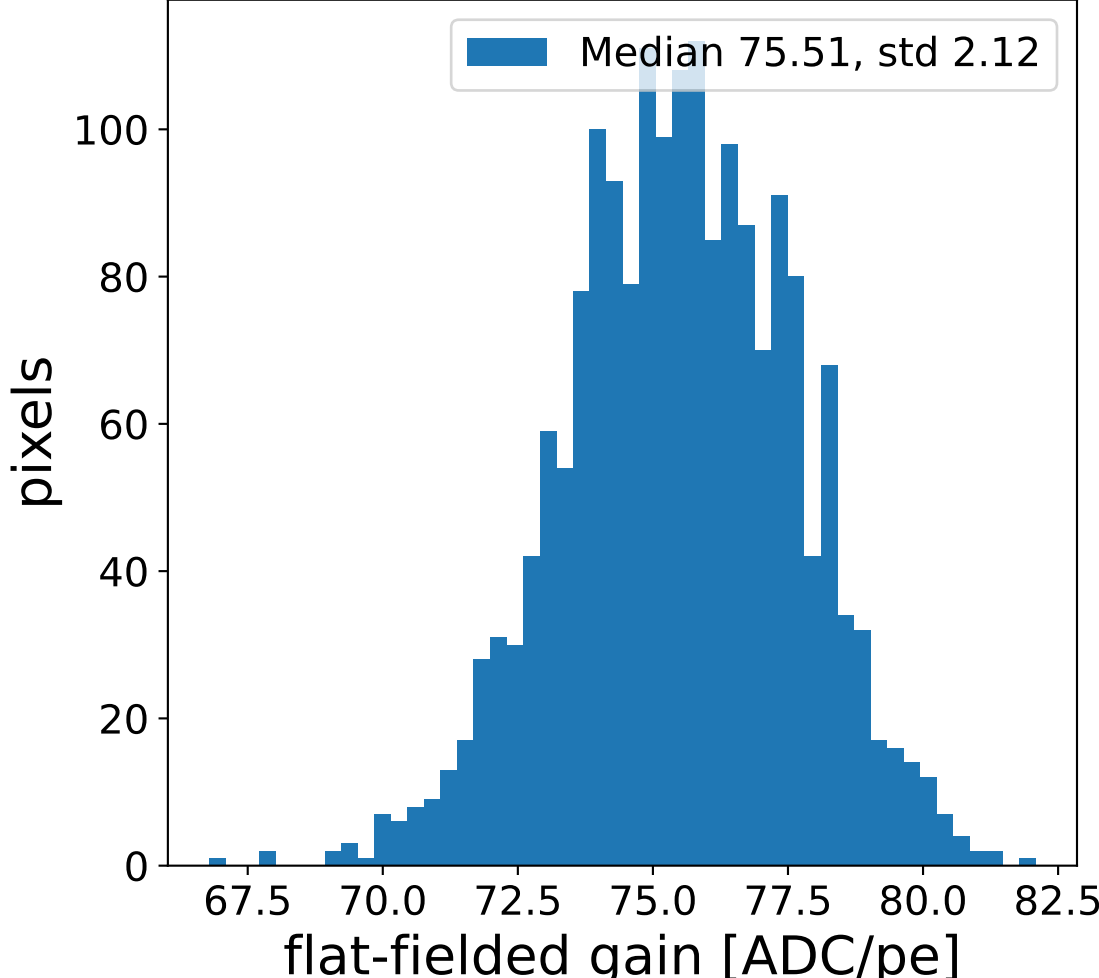
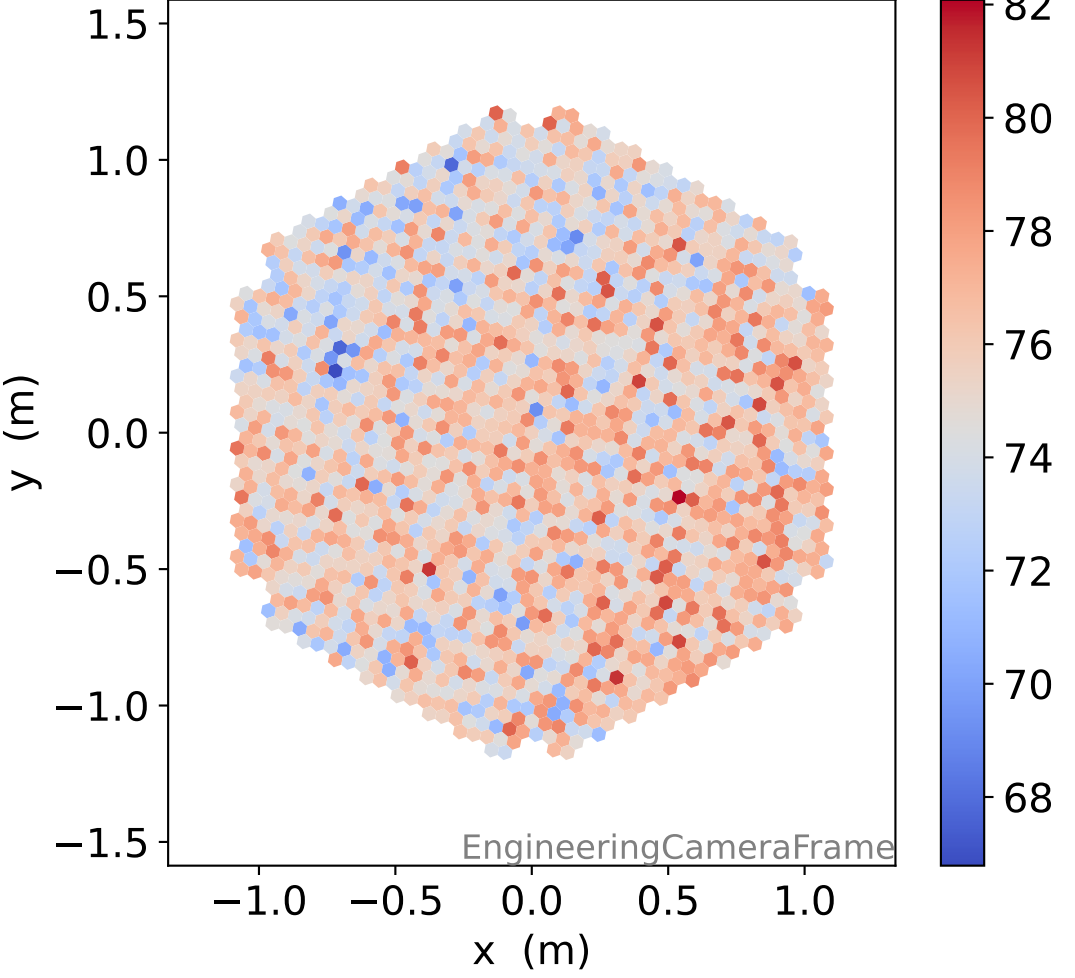
### FF sample of 10000 events



### pedestal sample of 10000 events

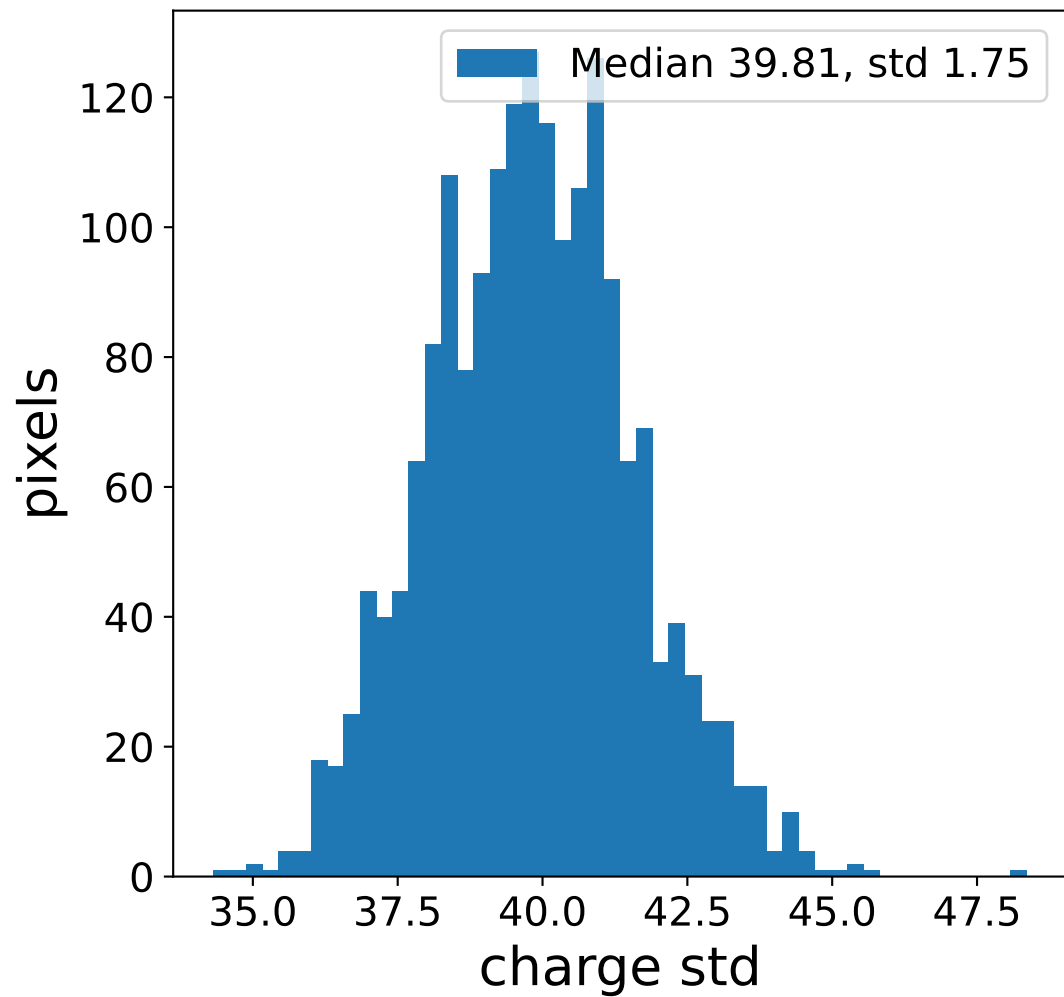
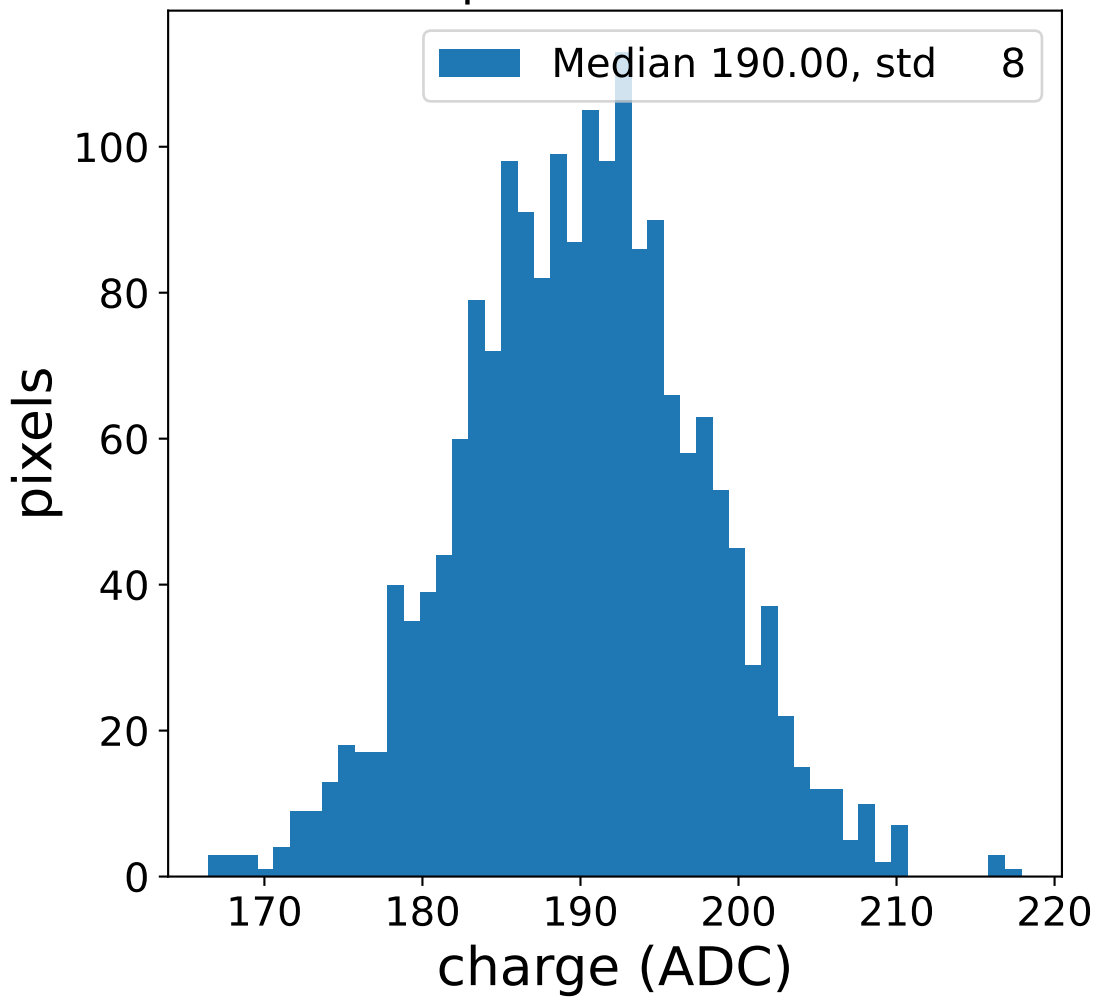


### flat-fielded gain [ADC/pe]

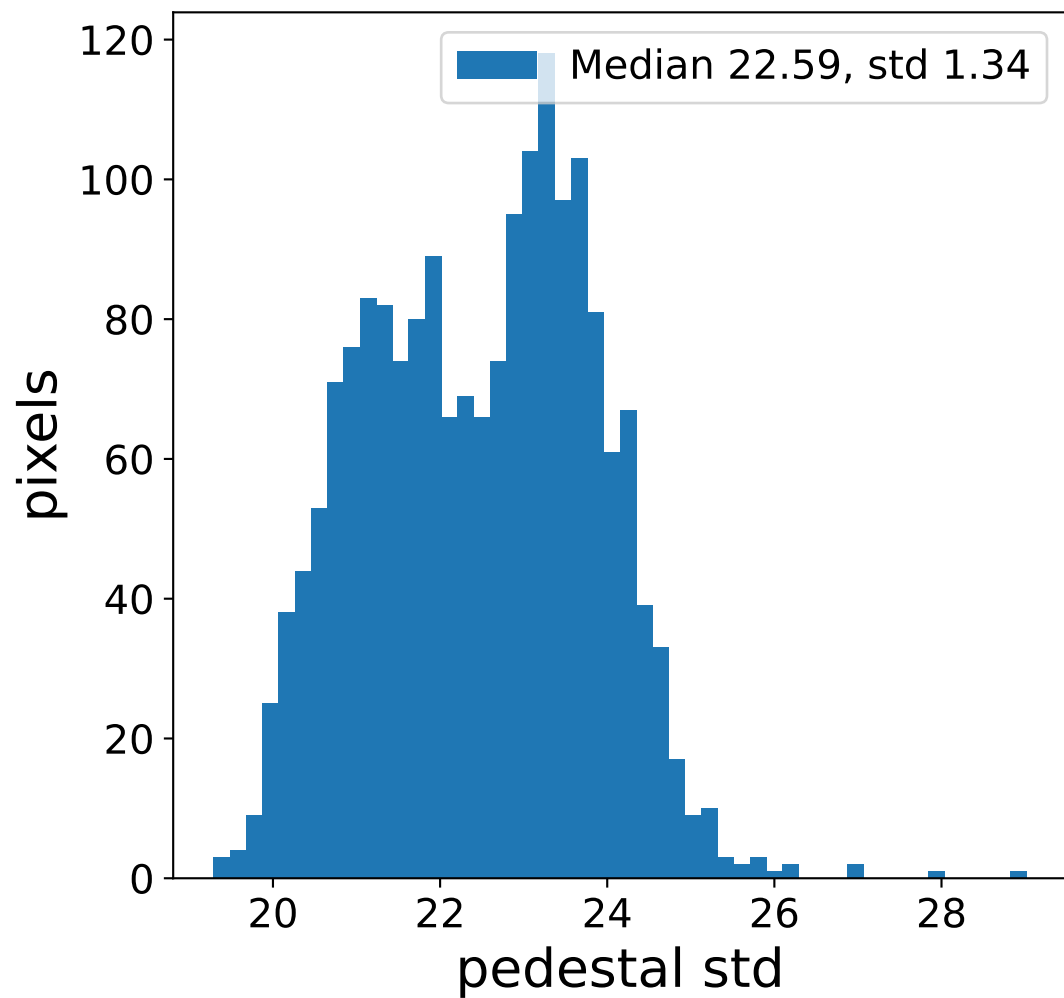
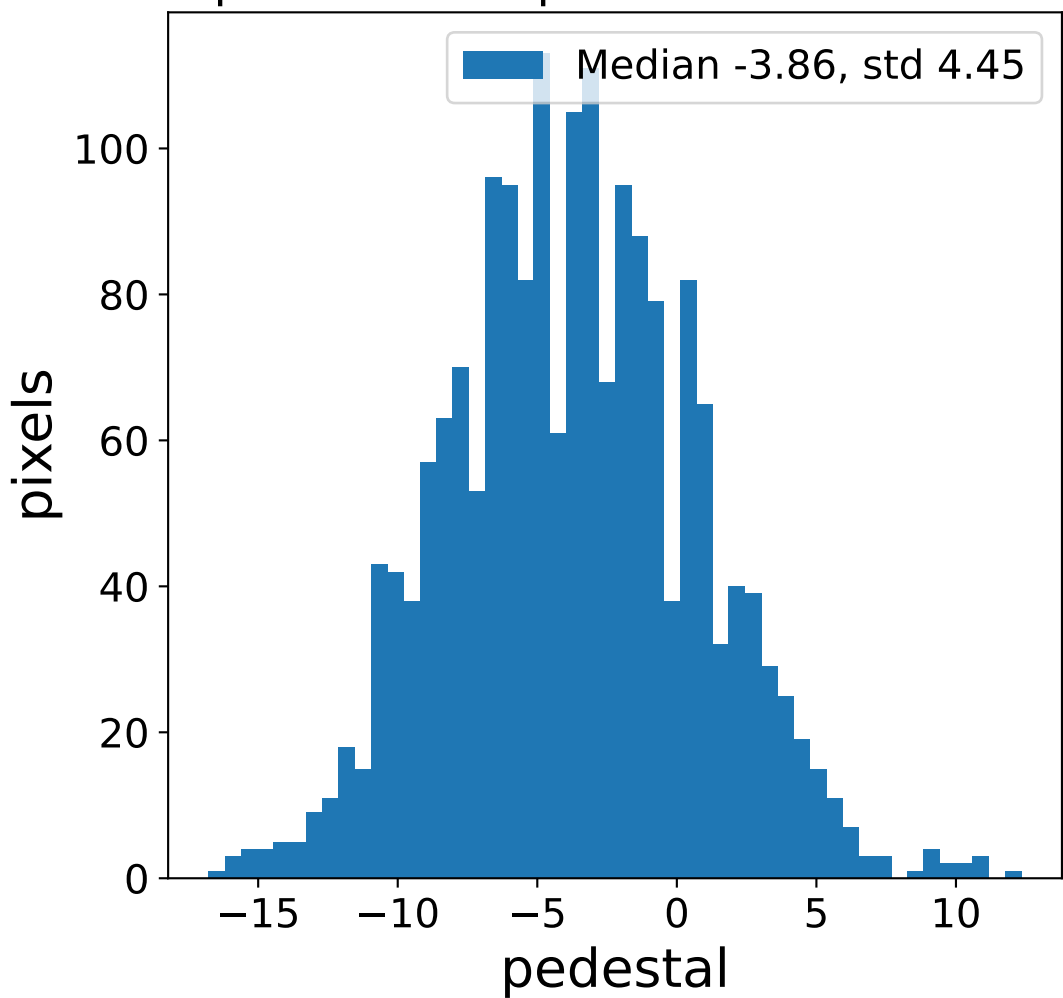


# Run 13747 channel: LG

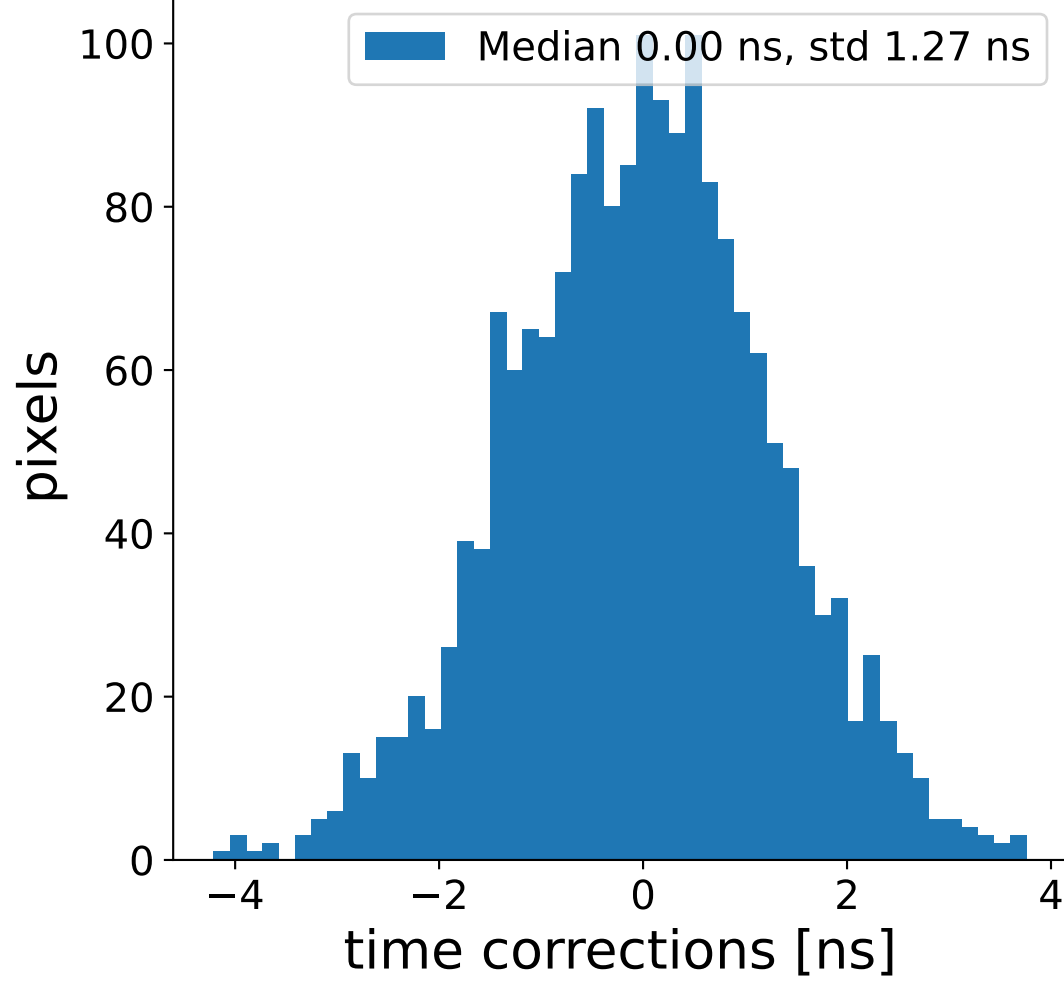
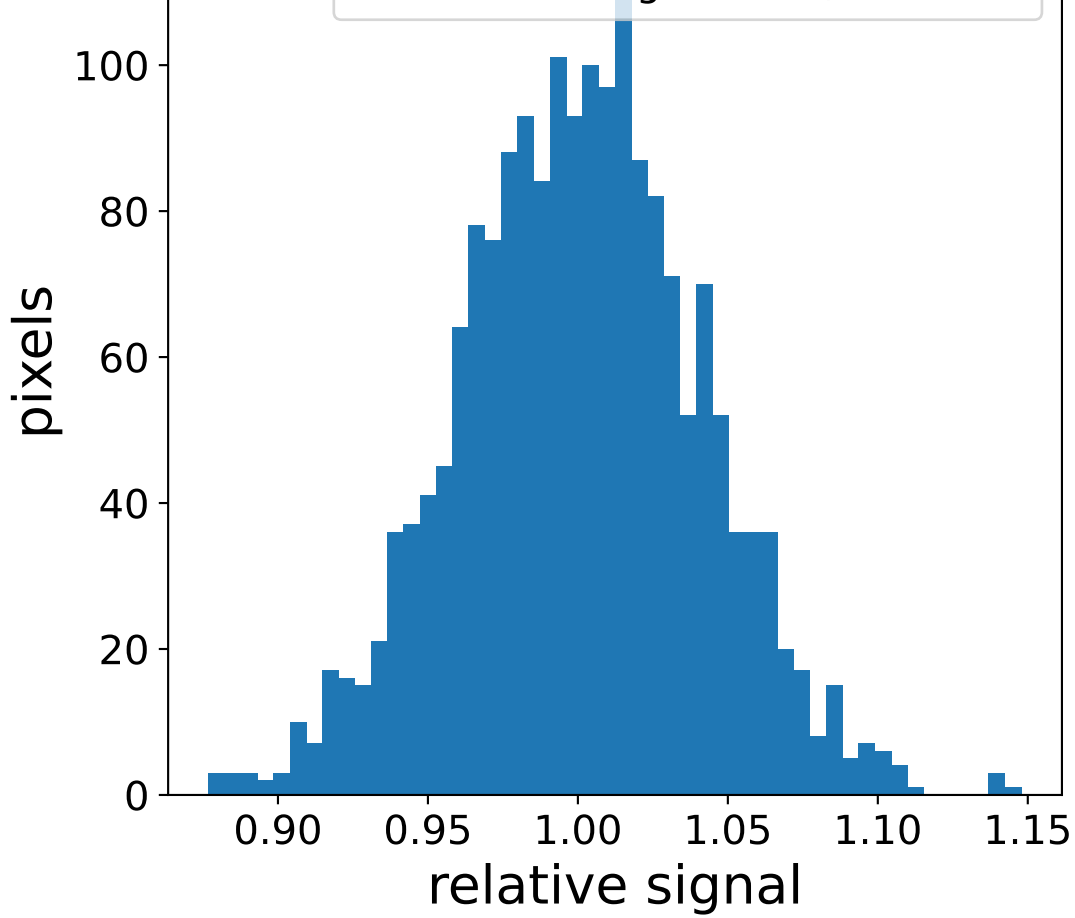
## FF sample of 10000 events



## pedestal sample of 10000 events



## Relative gain 1.00, std 0.04



## flat-fielded gain [ADC/pe]

