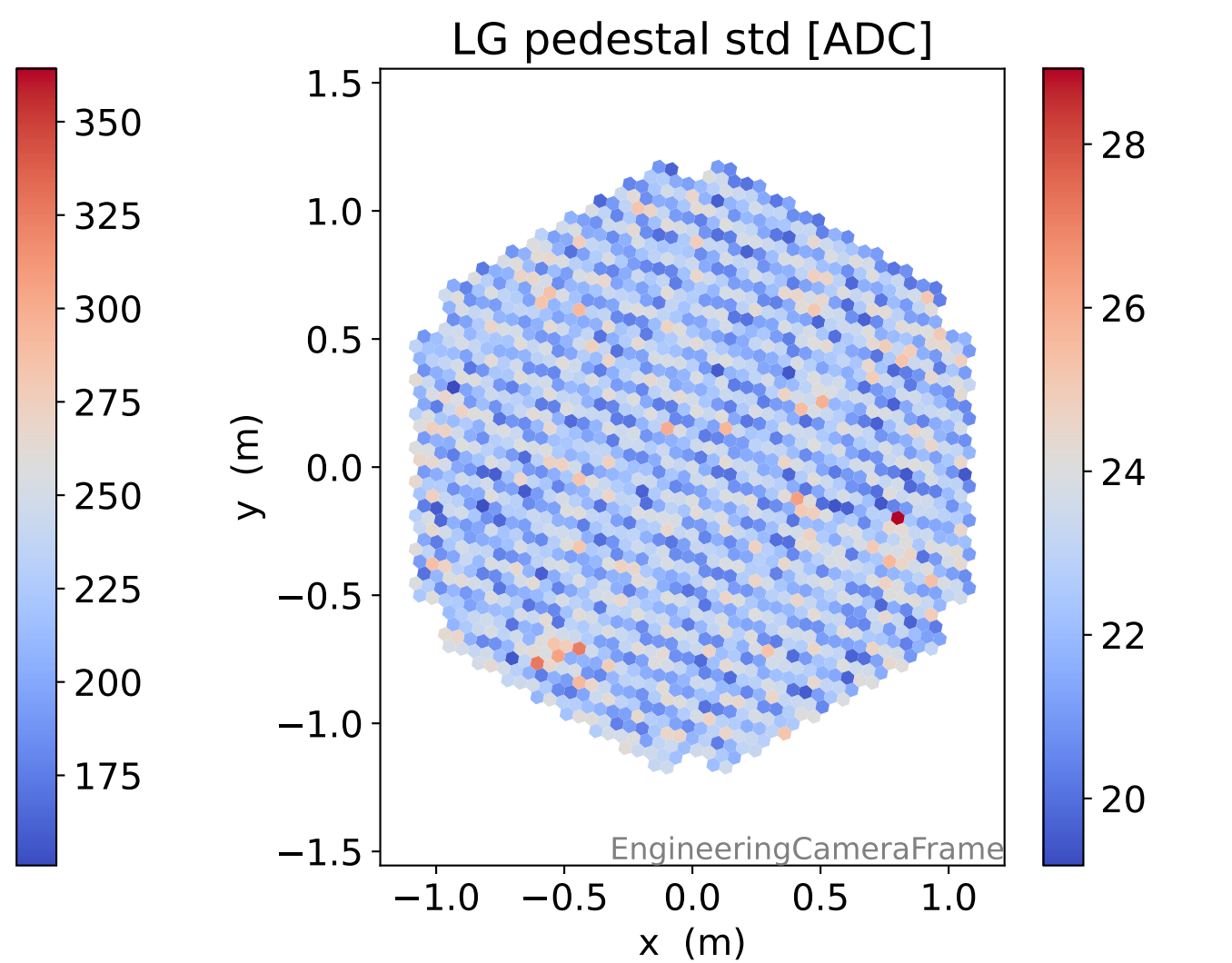
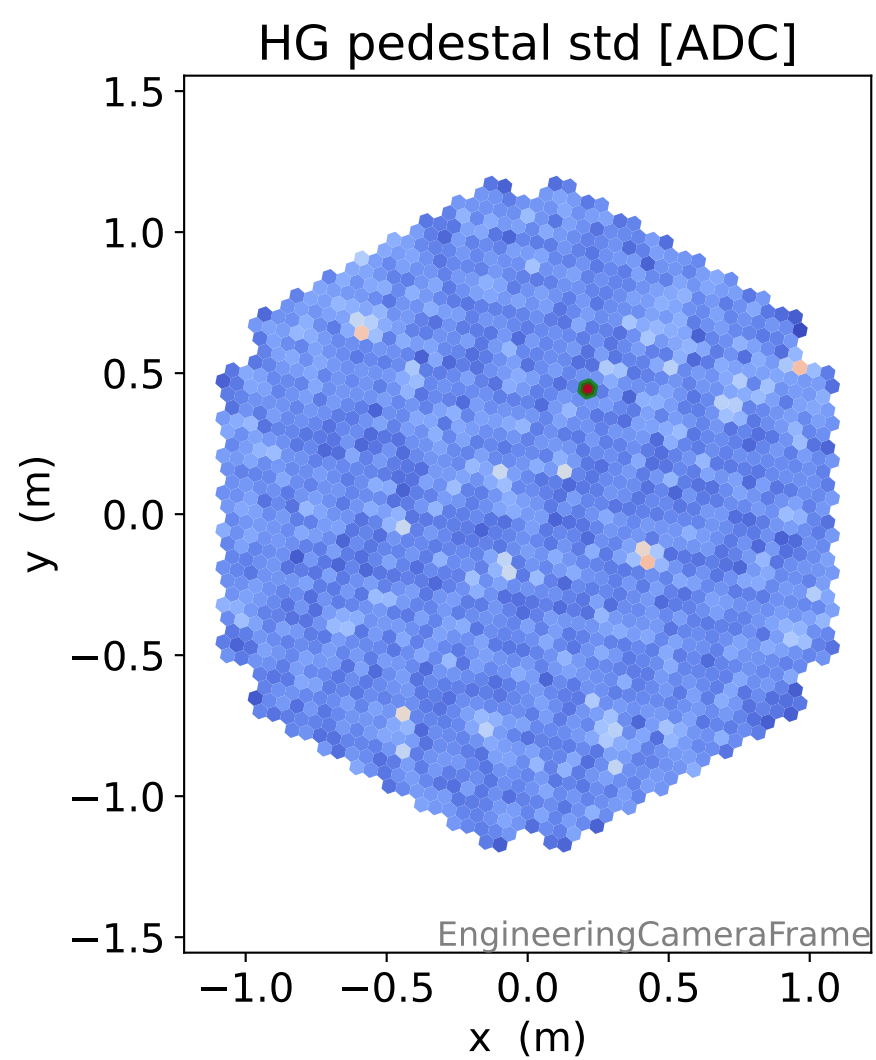
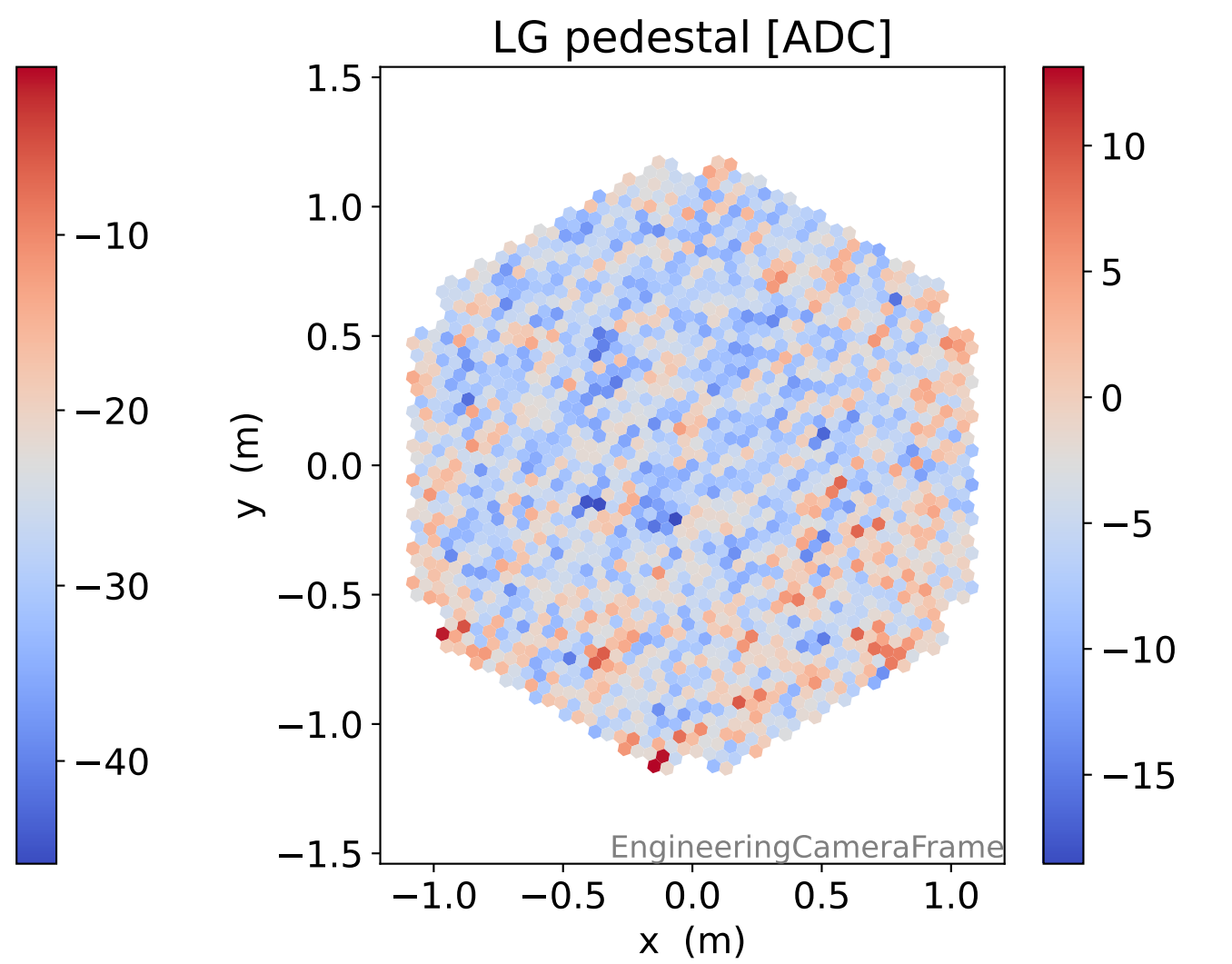
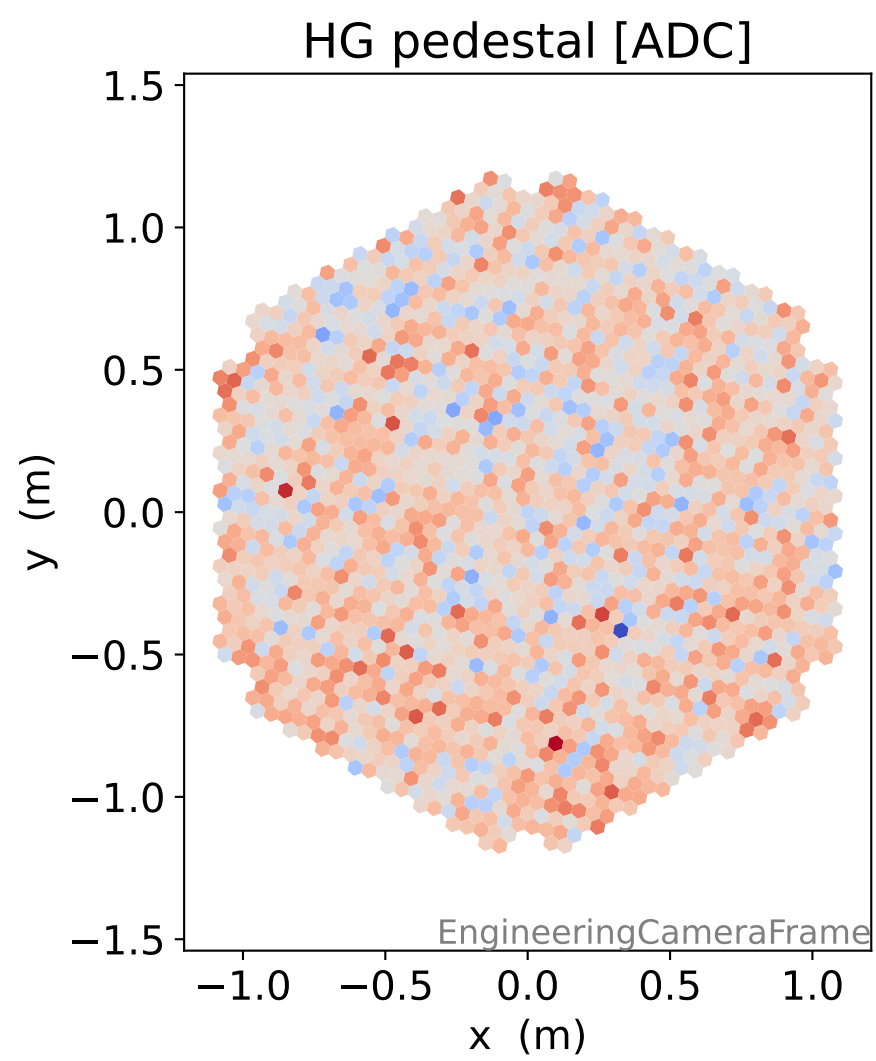
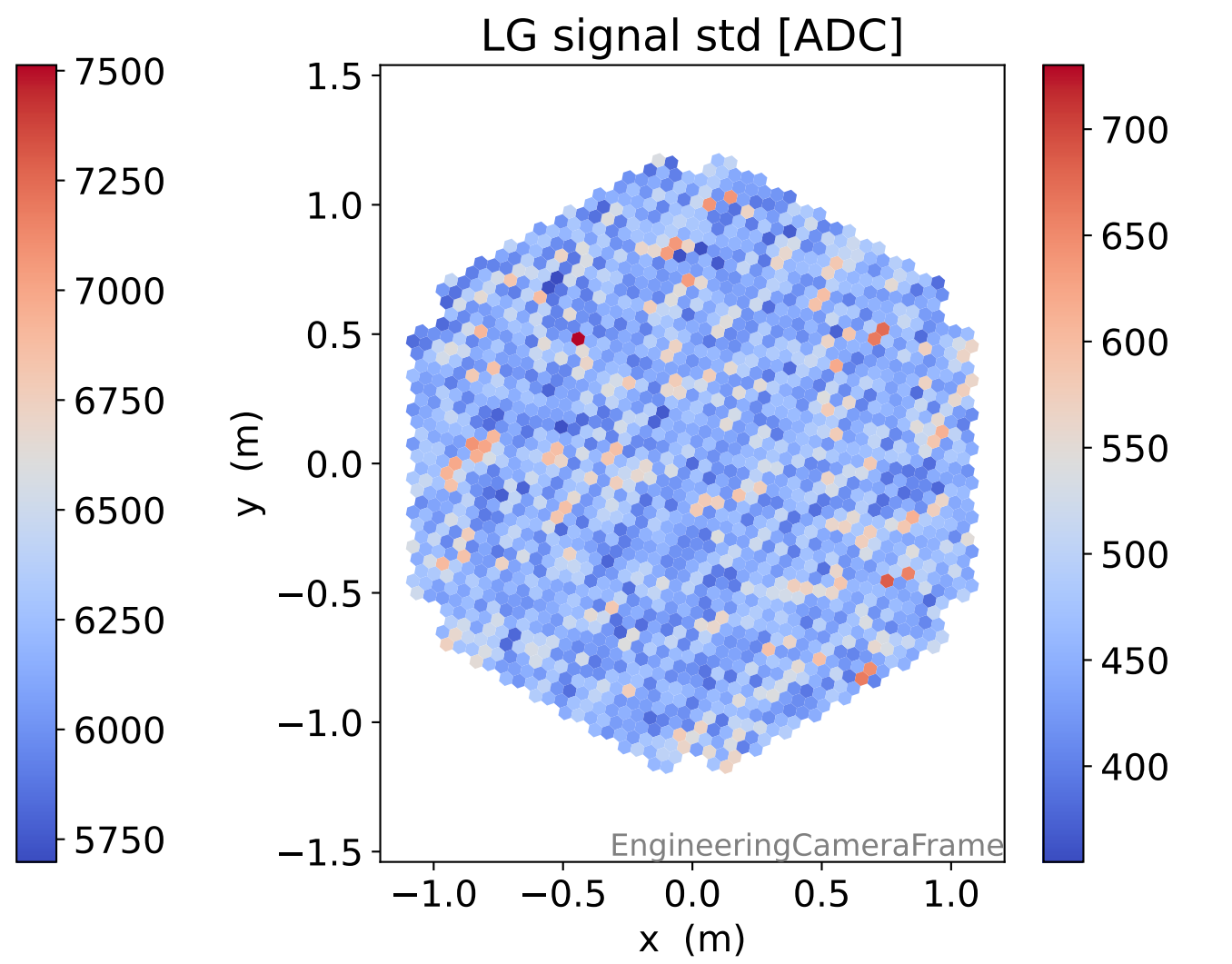
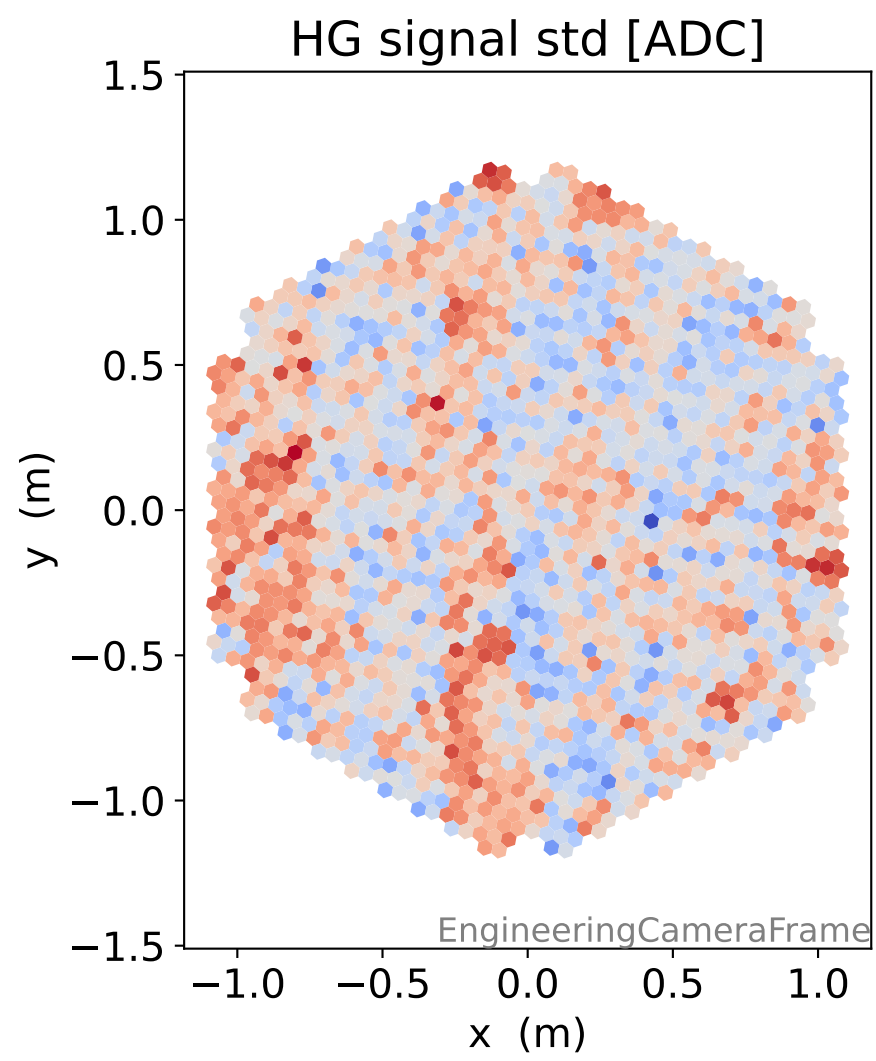
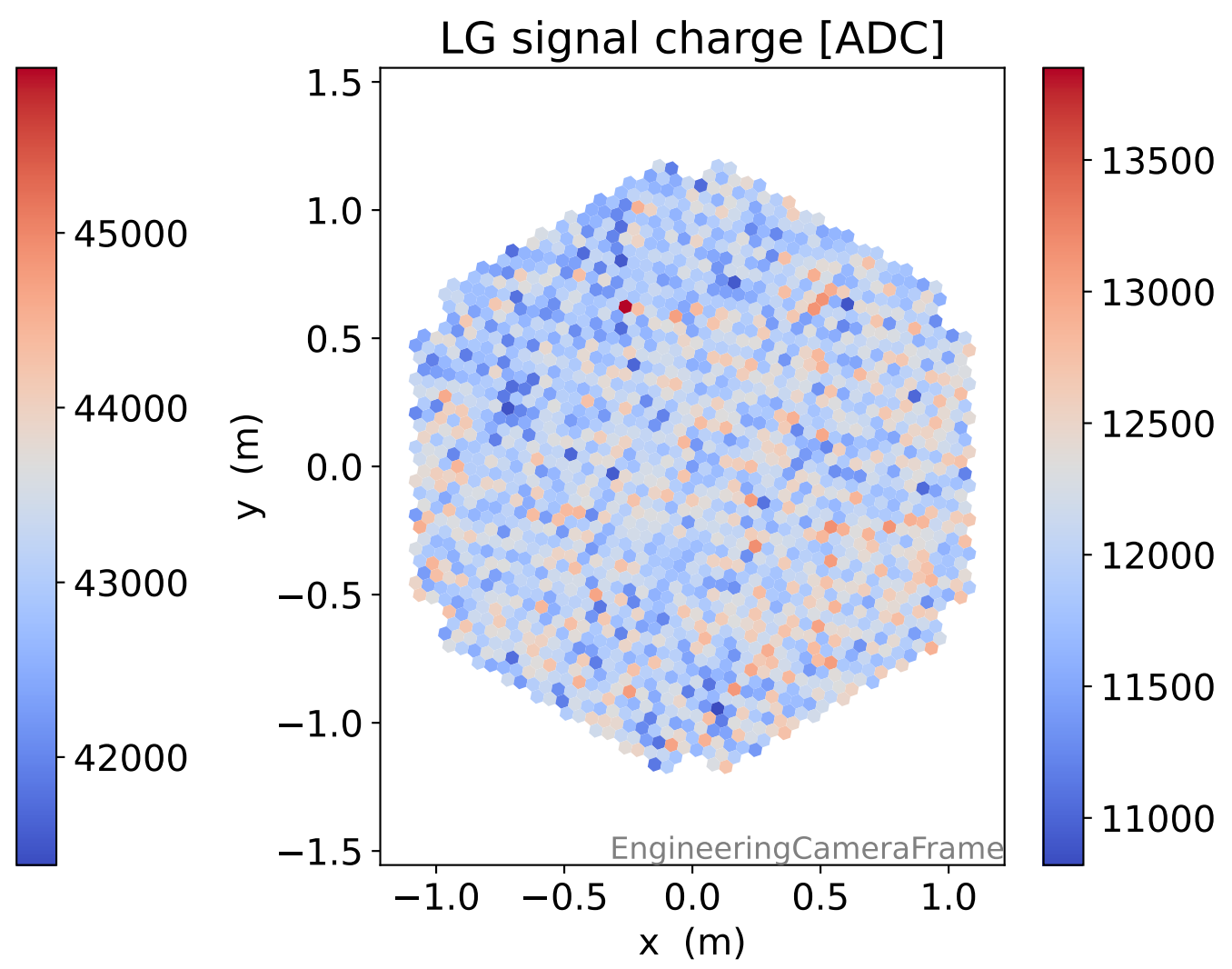
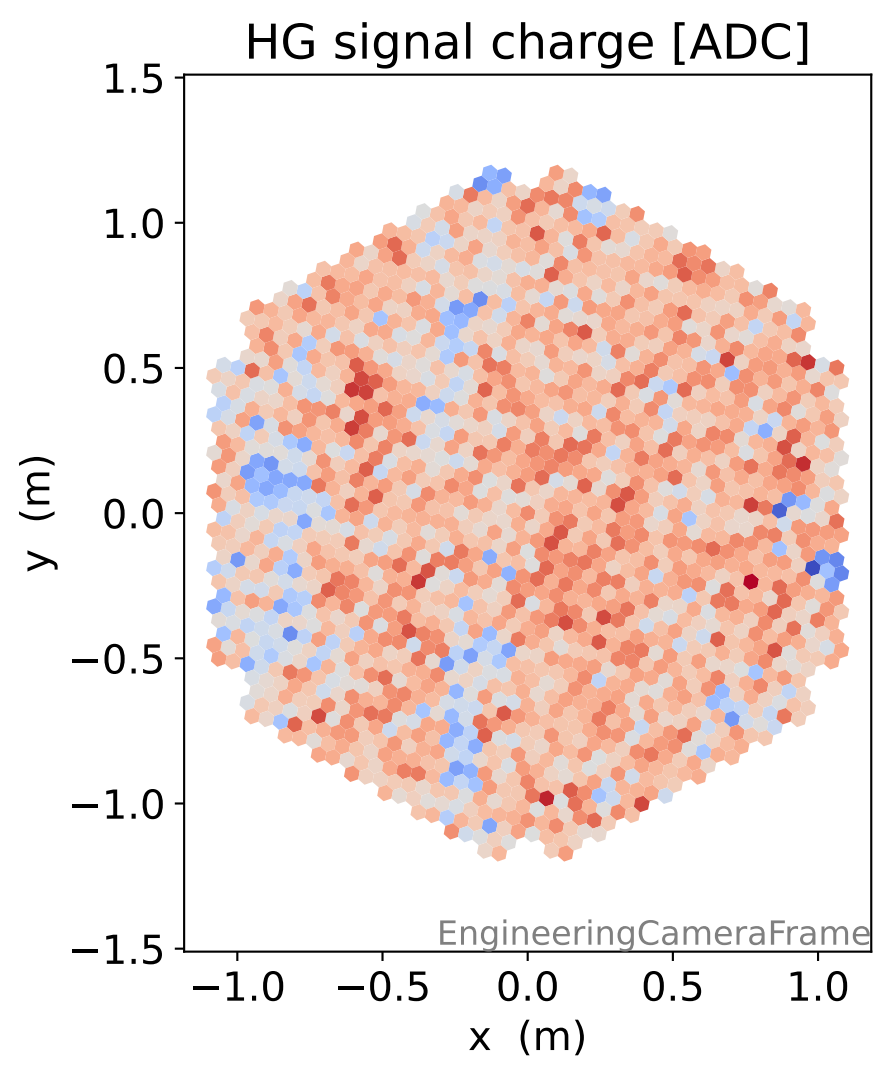
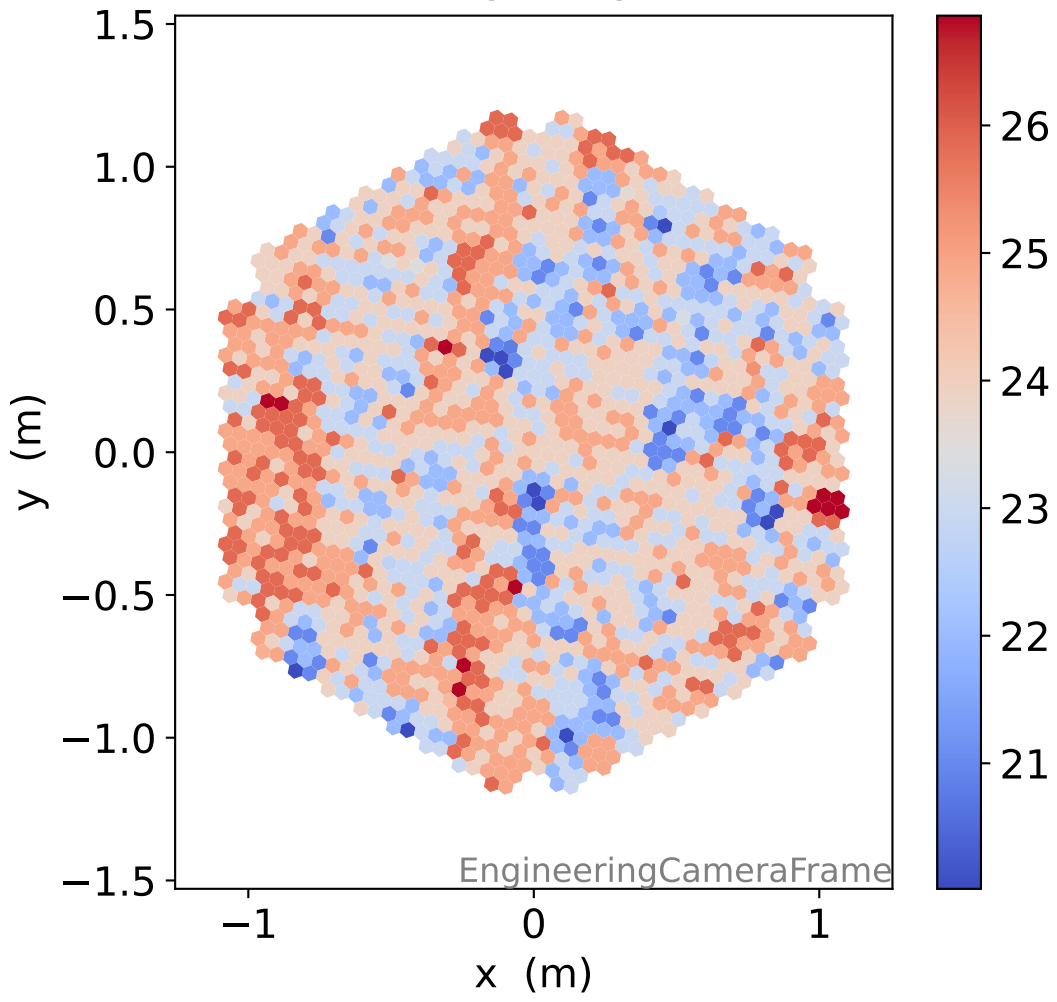


Run 13738

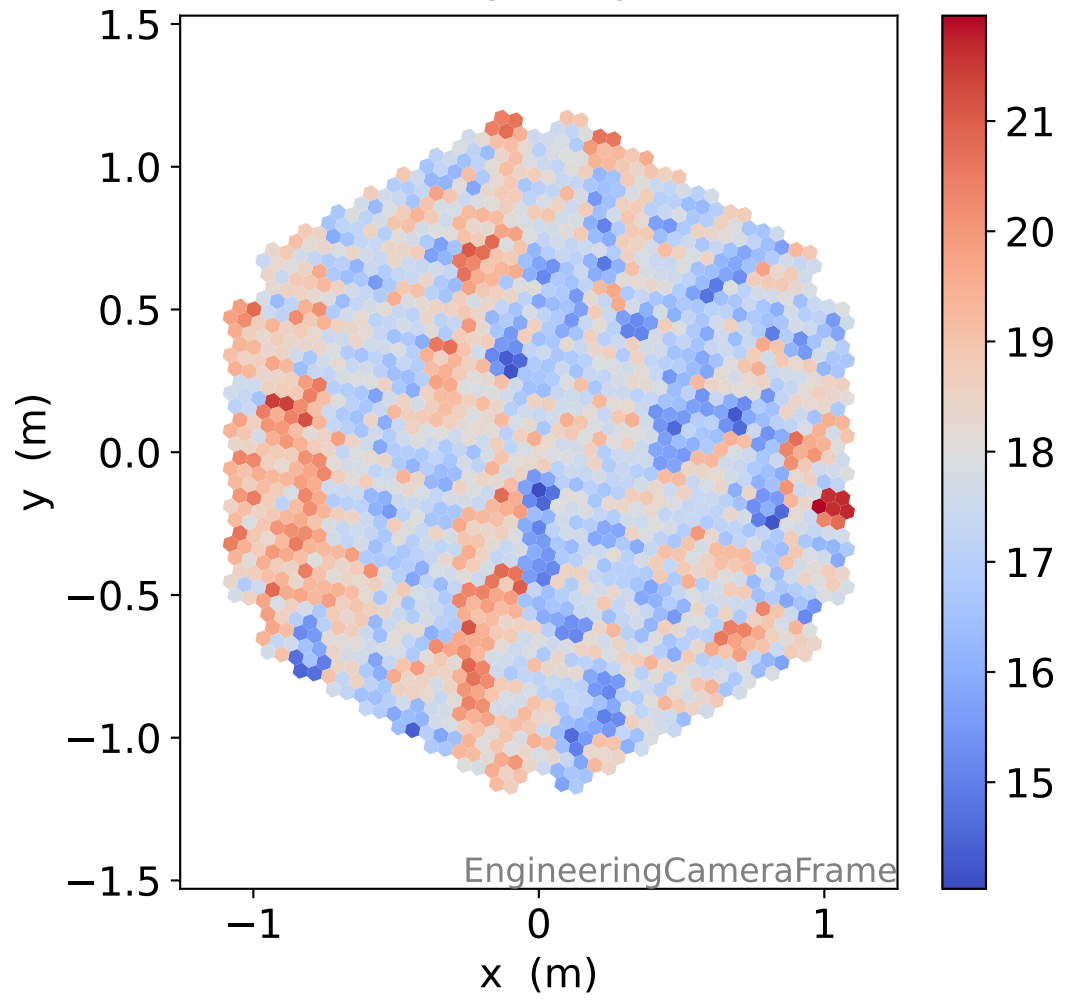


Run 13738

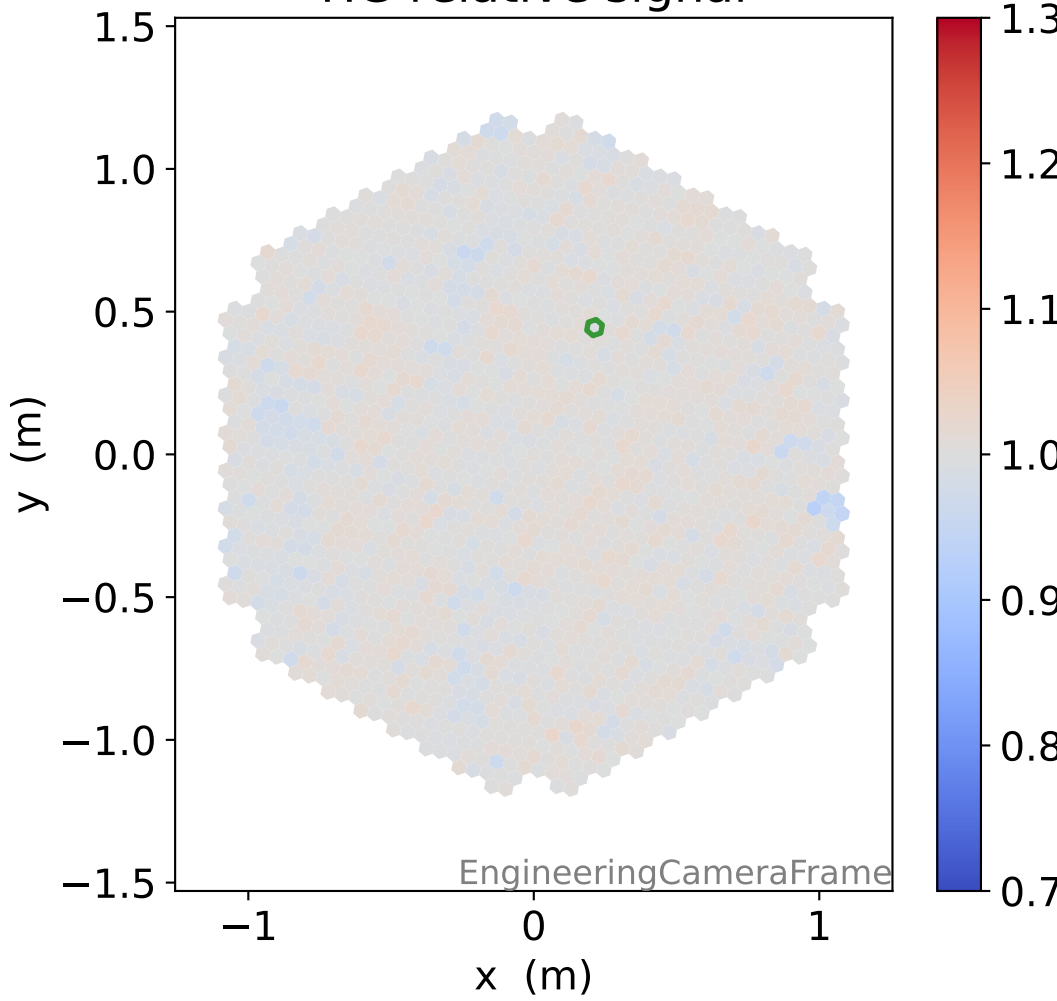
HG time



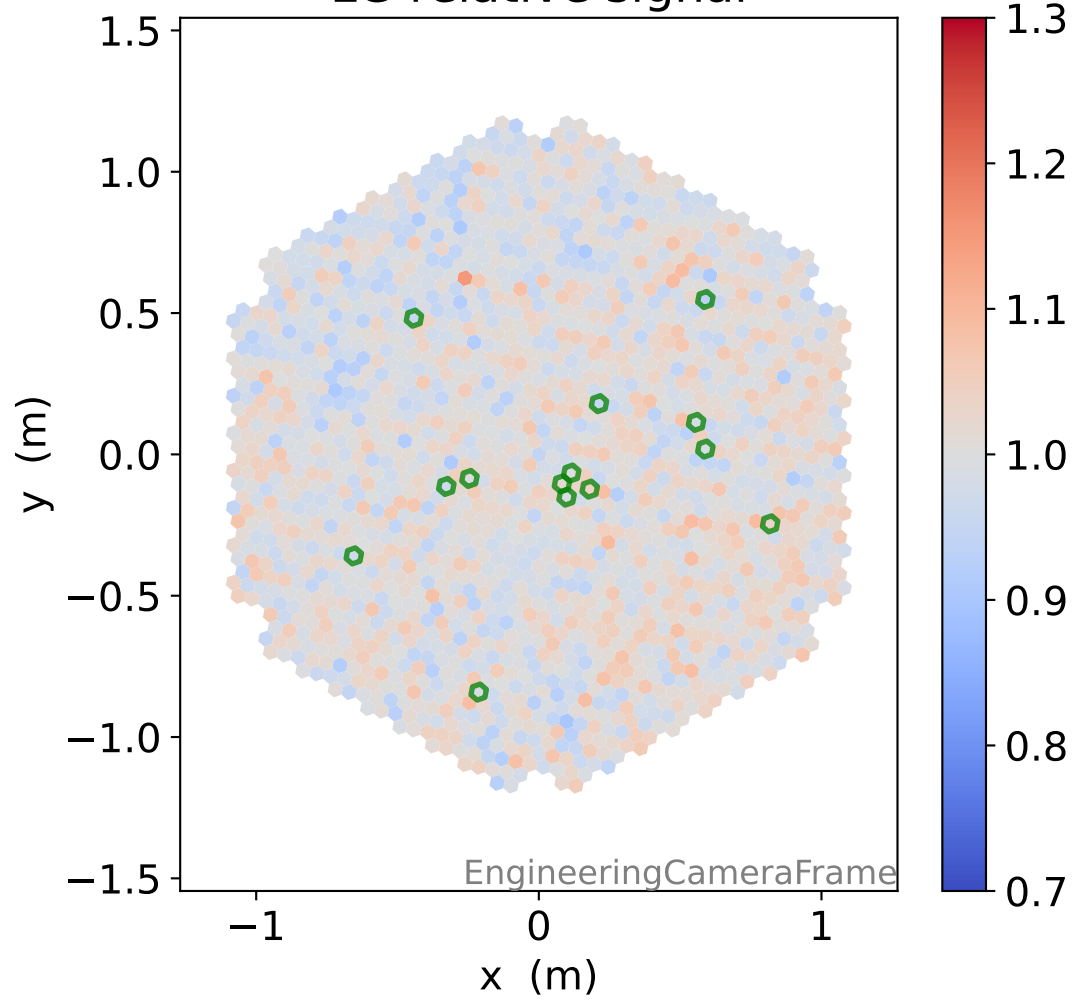
LG time



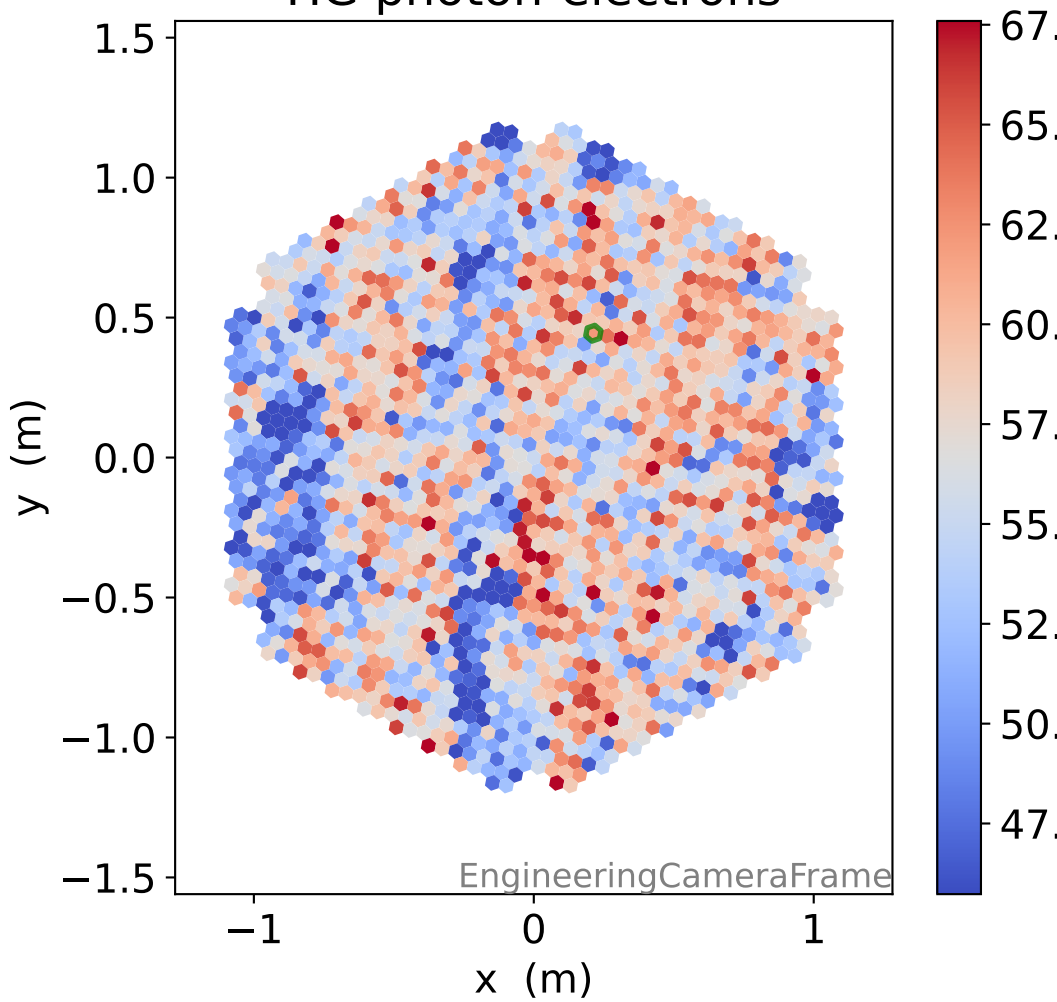
HG relative signal



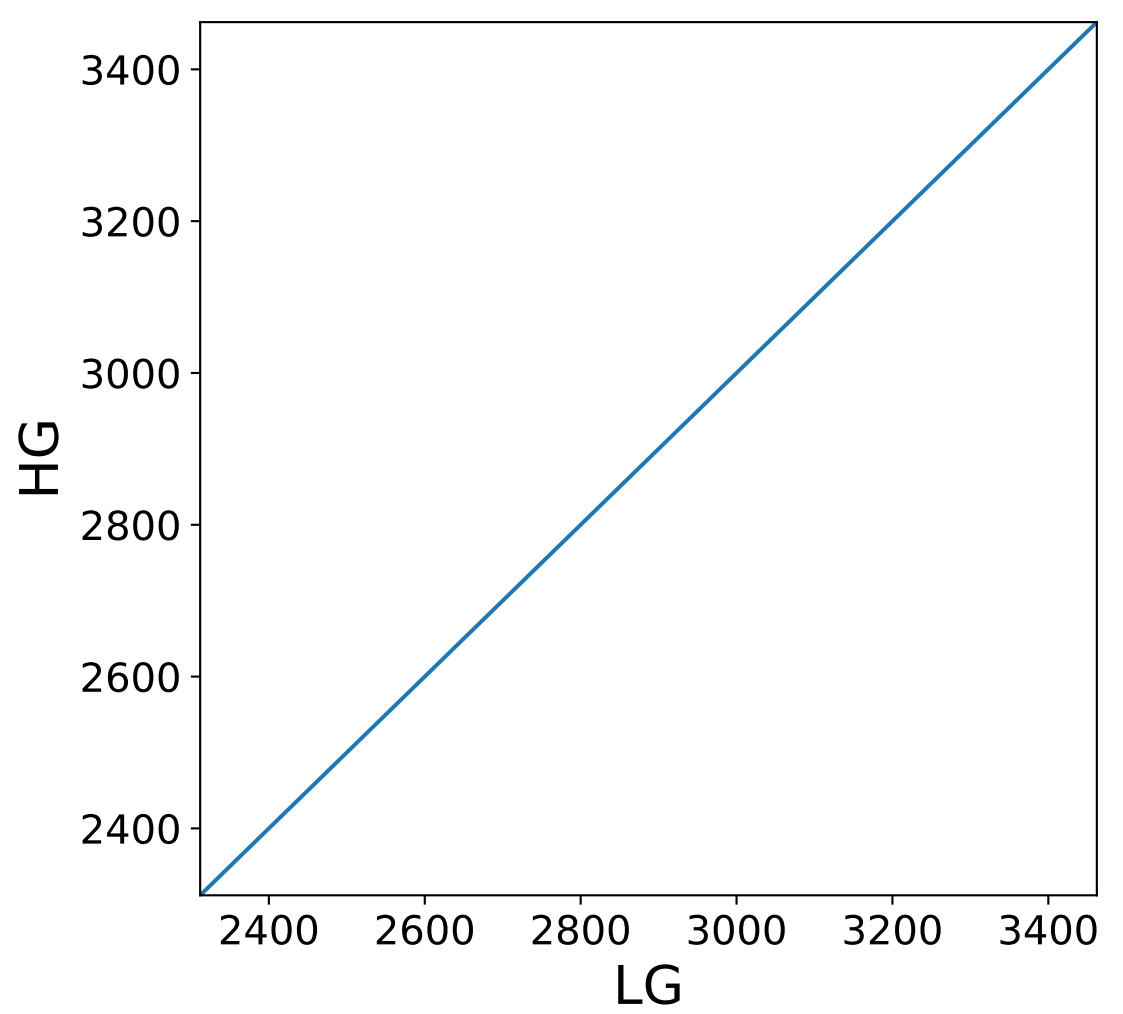
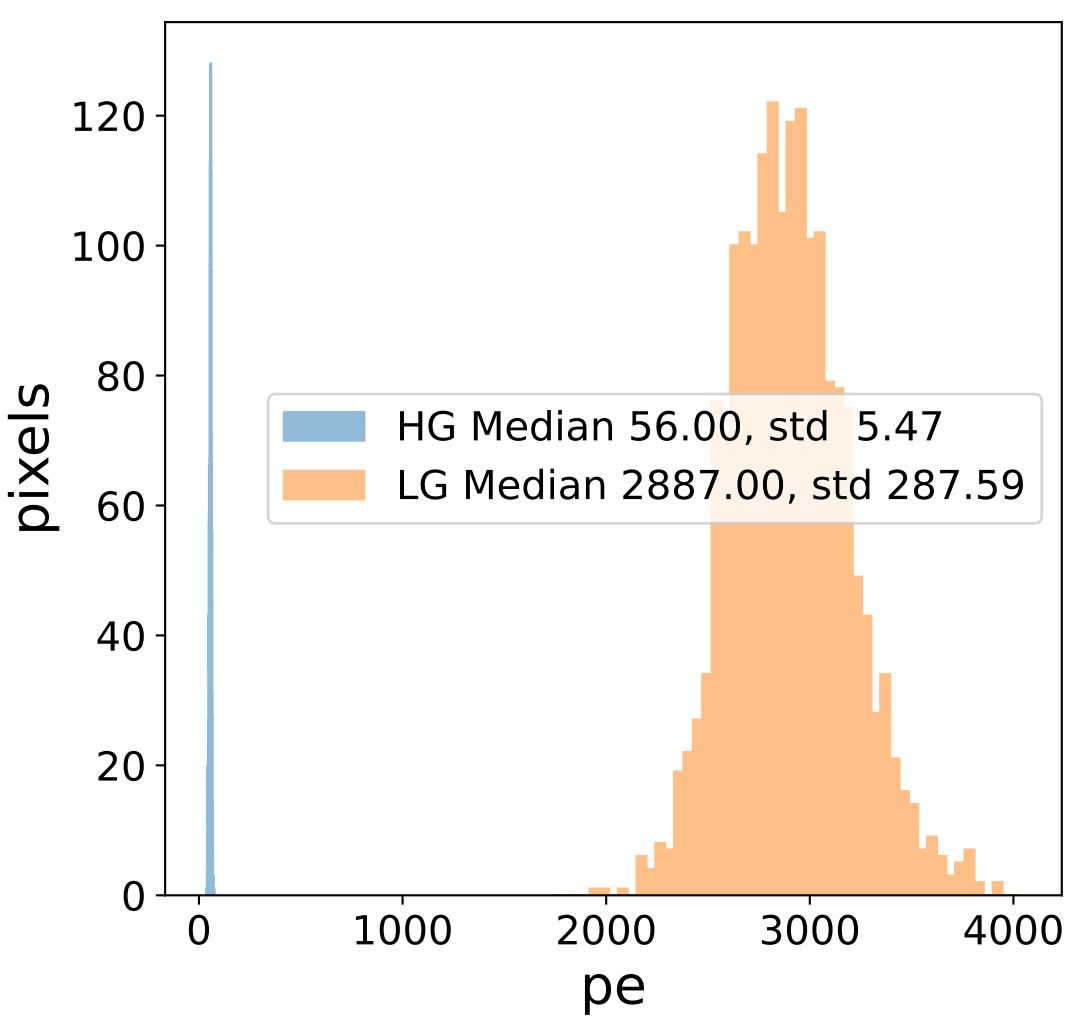
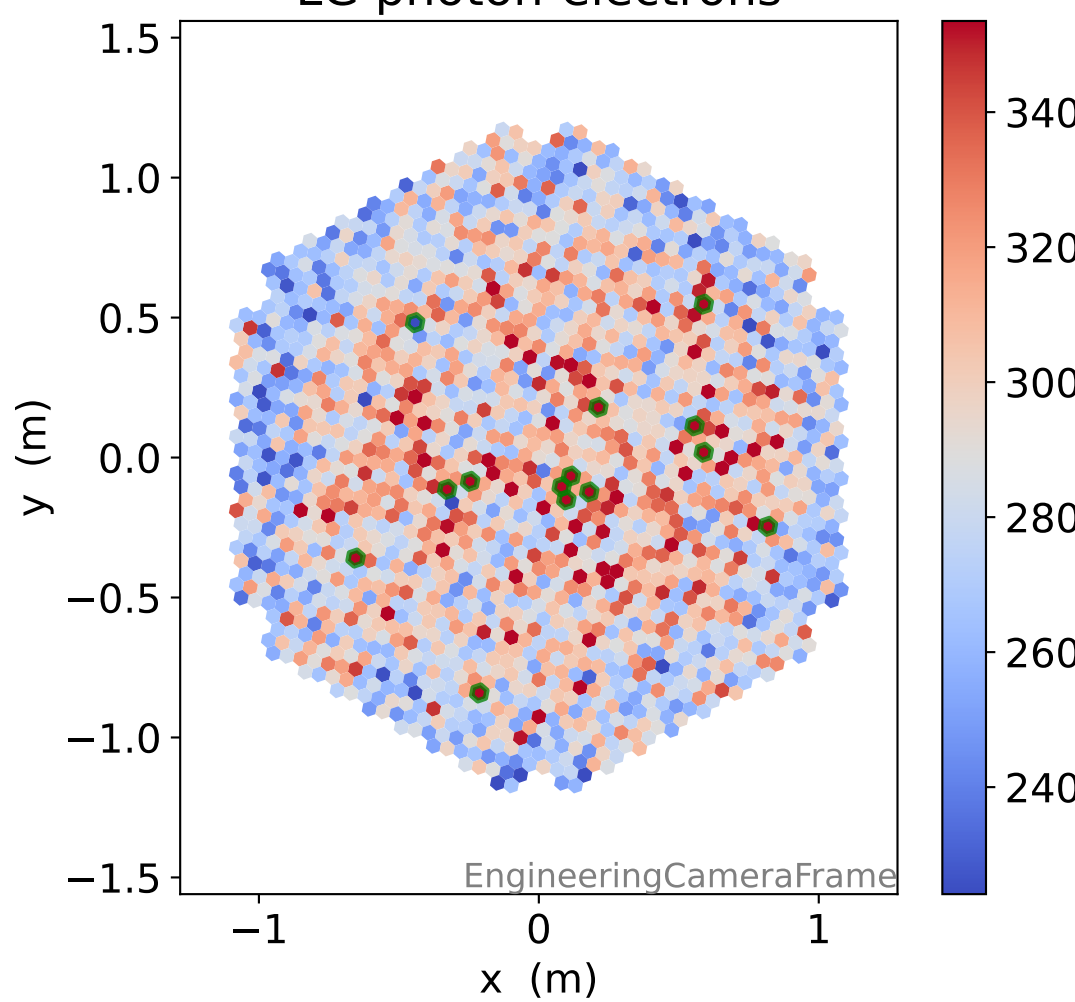
LG relative signal



HG photon-electrons

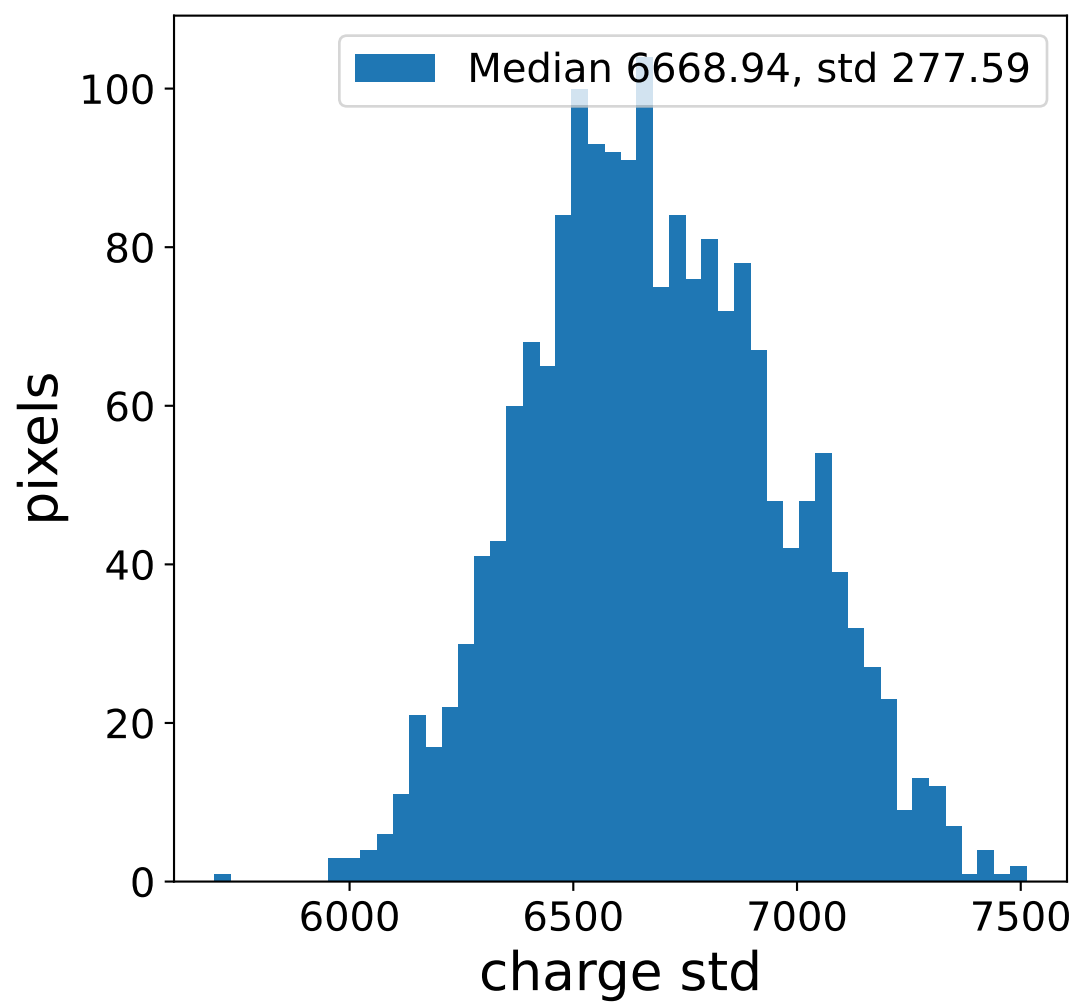
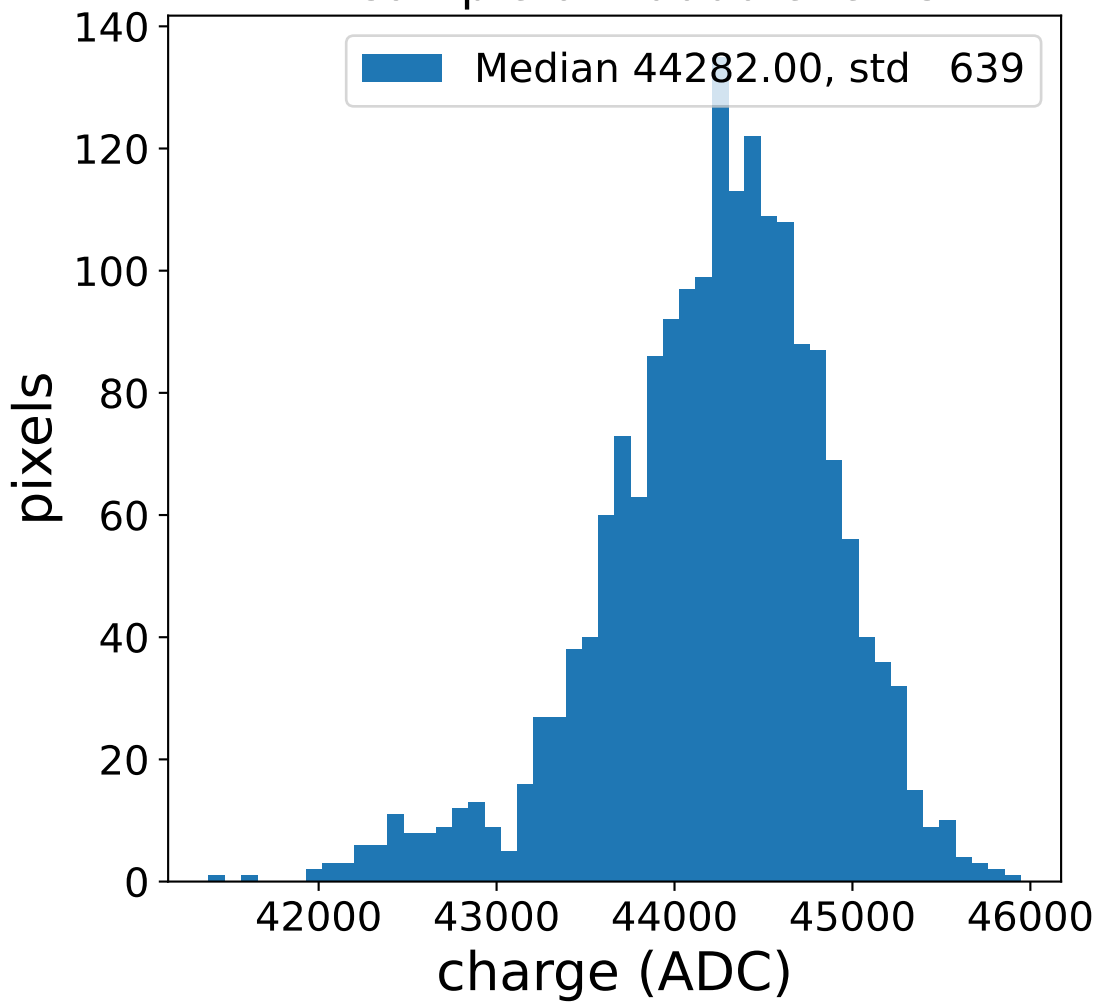


LG photon-electrons

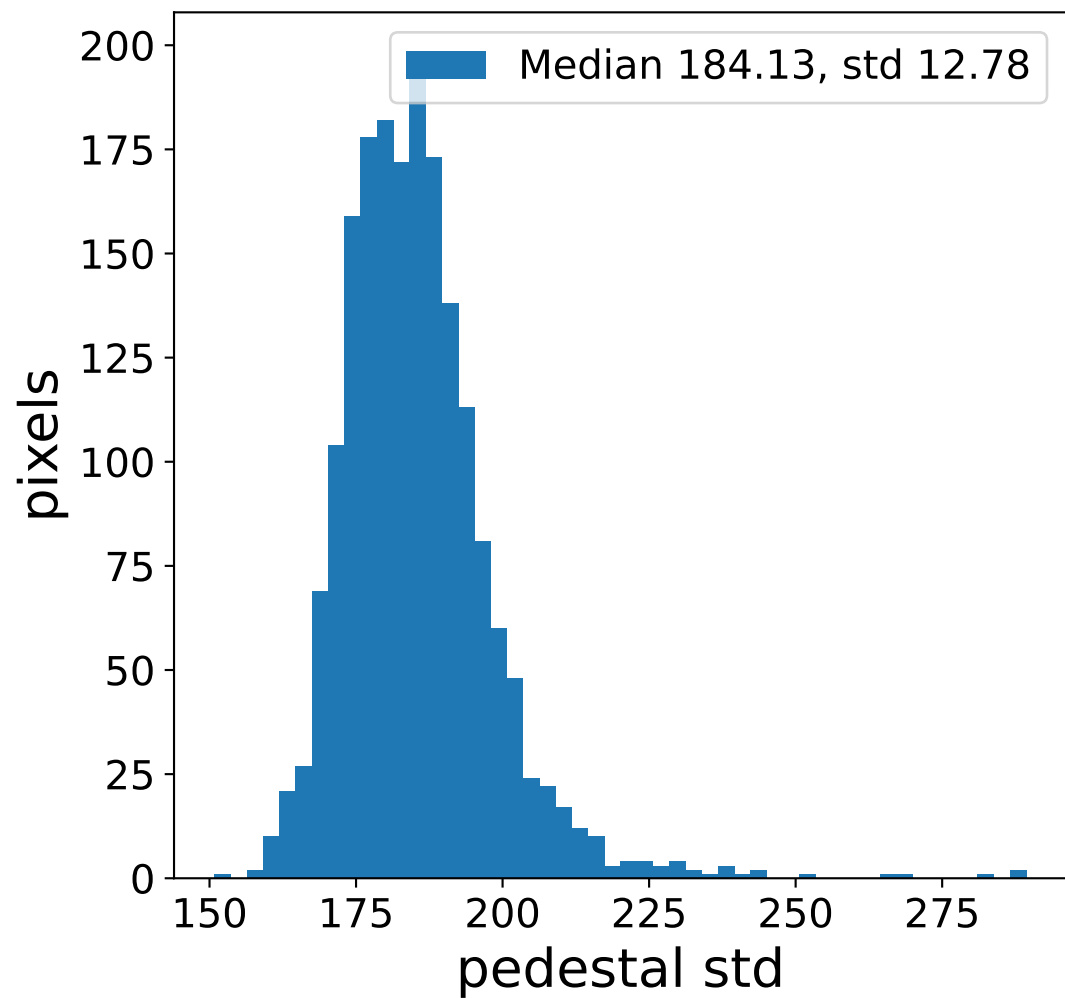
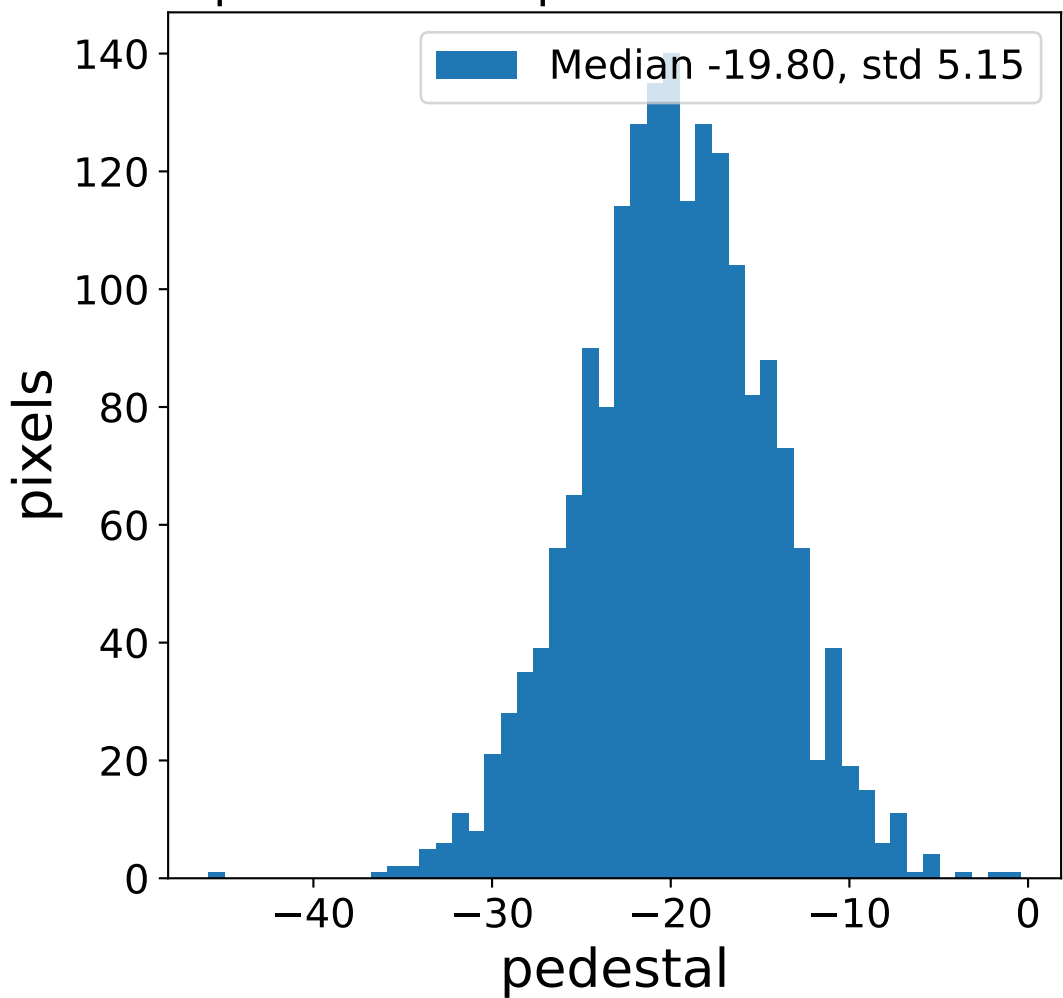


Run 13738 channel: HG

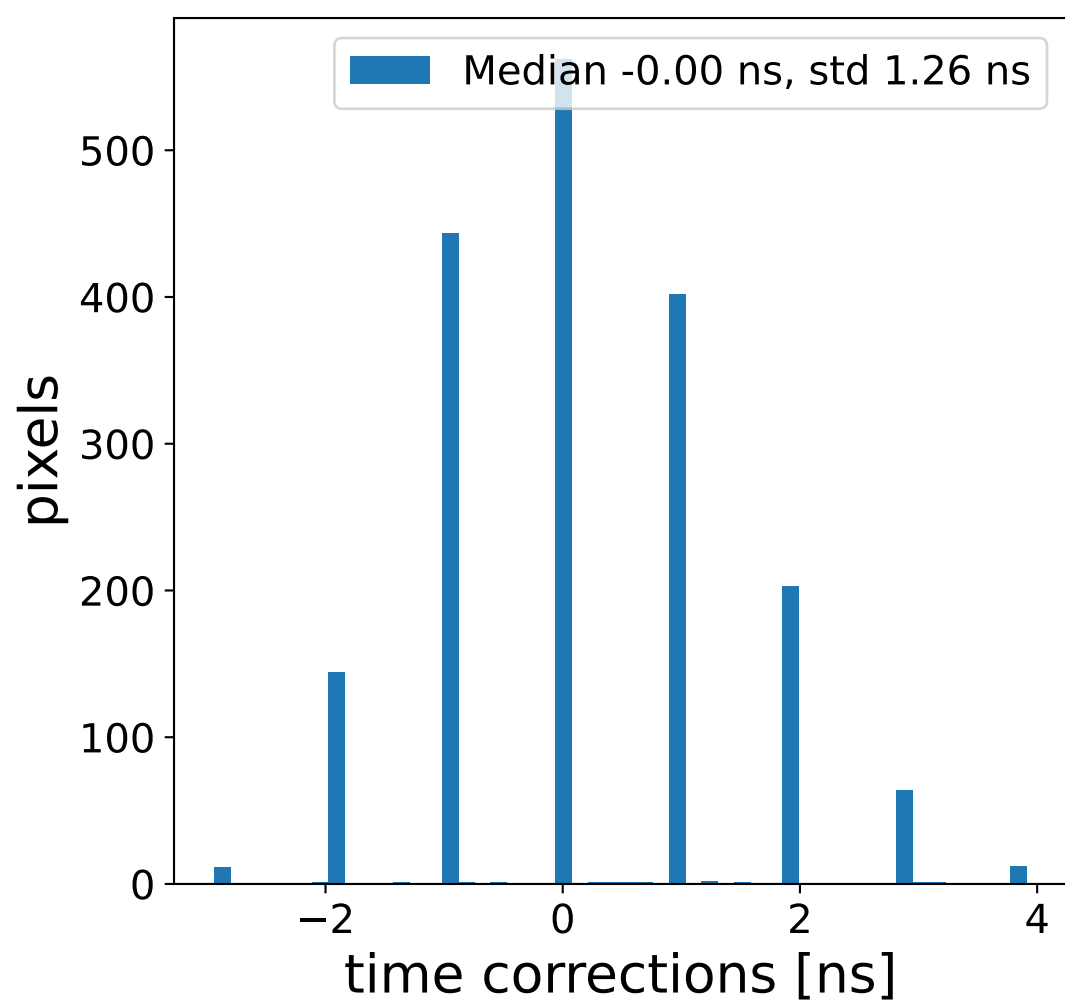
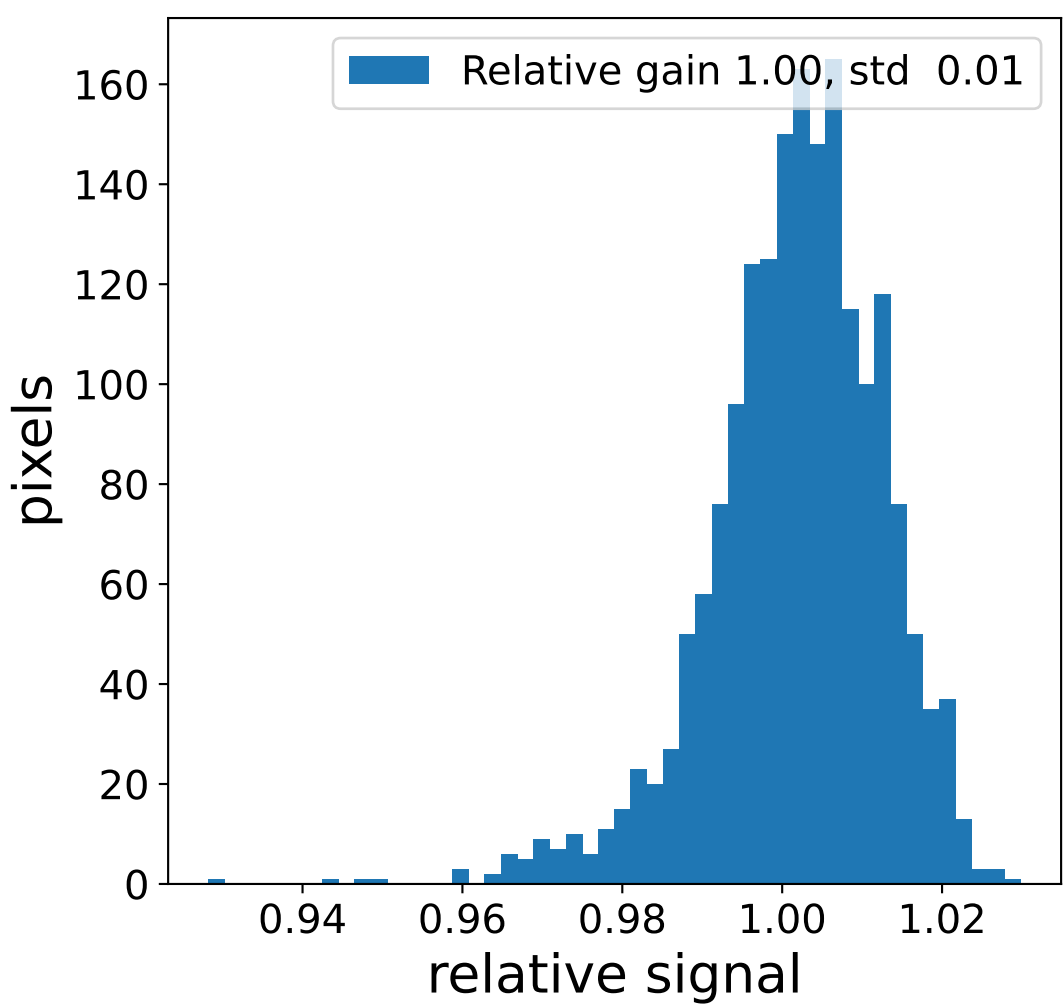
FF sample of 10000 events



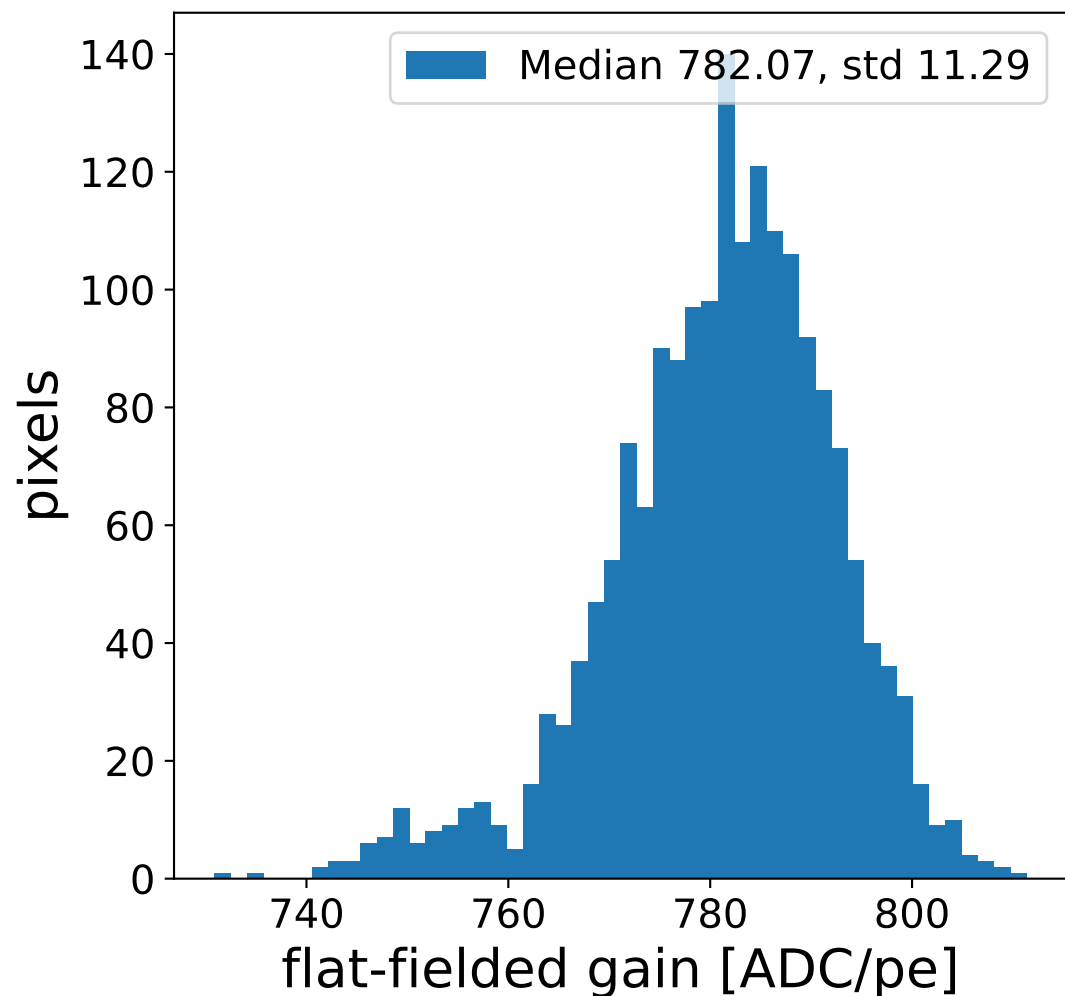
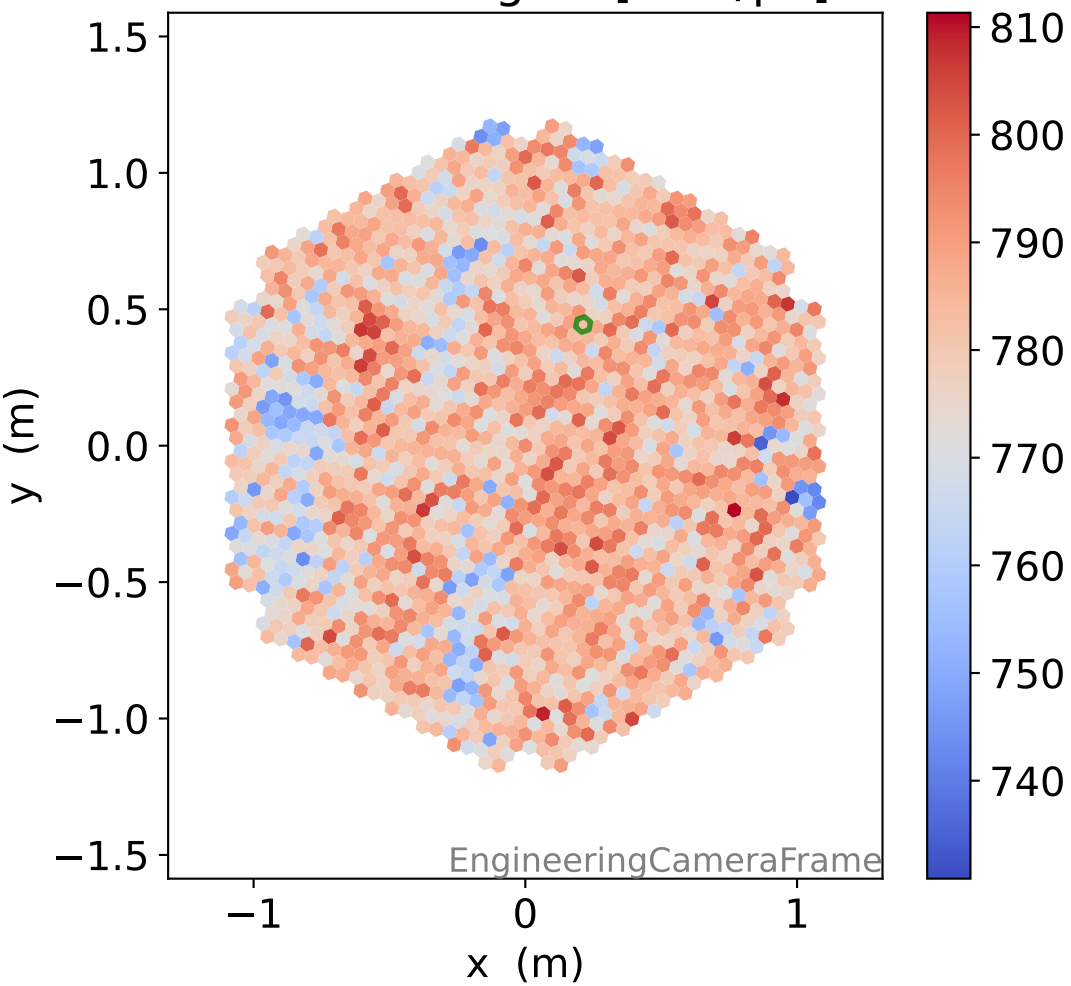
pedestal sample of 10000 events



Relative gain 1.00, std 0.01

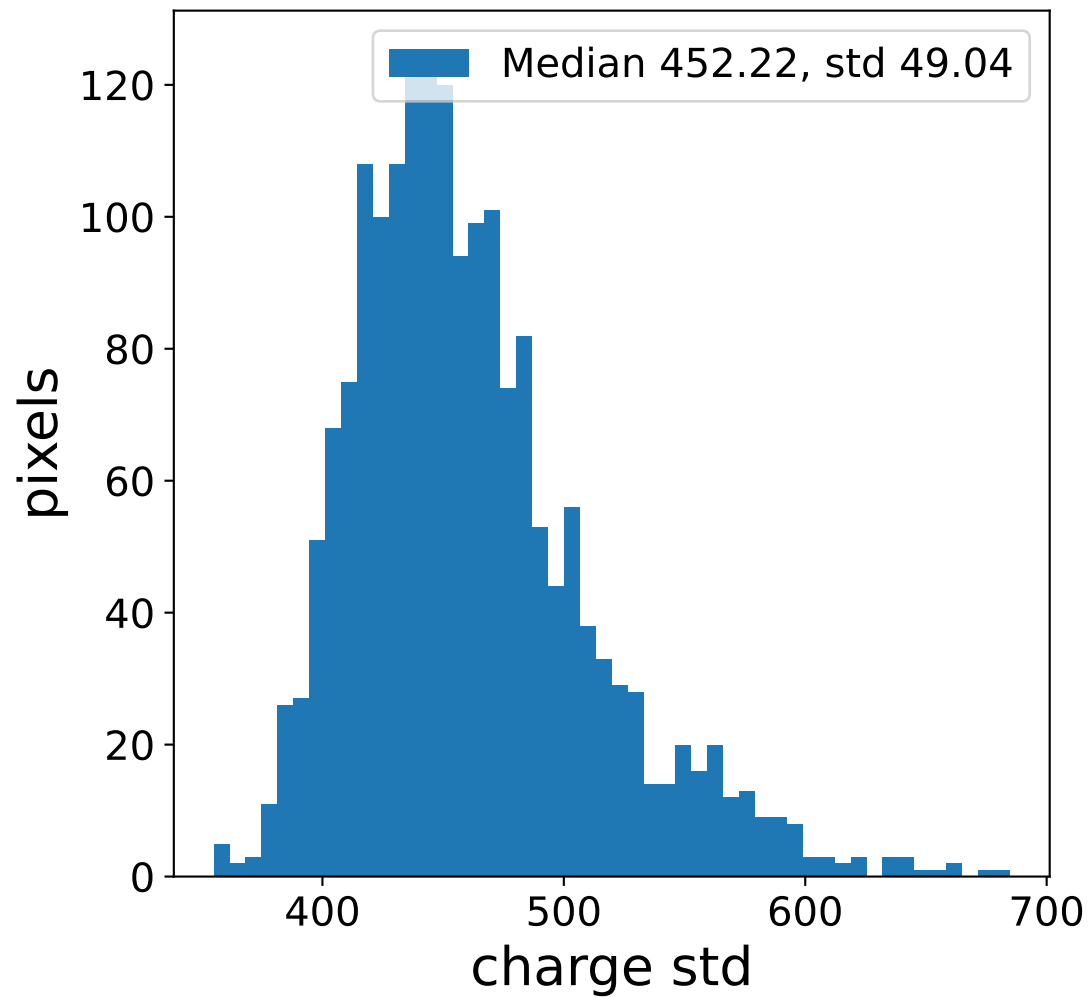
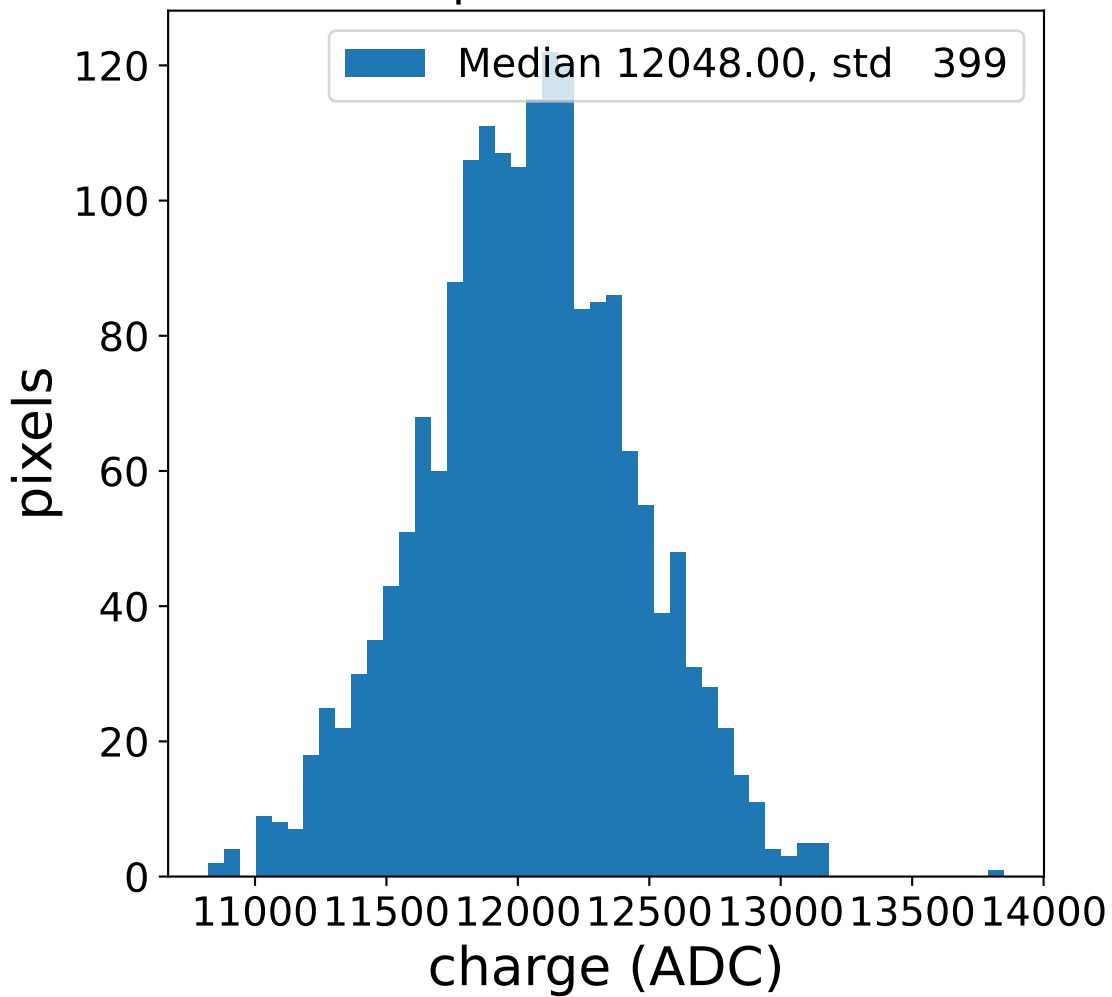


flat-fielded gain [ADC/pe]

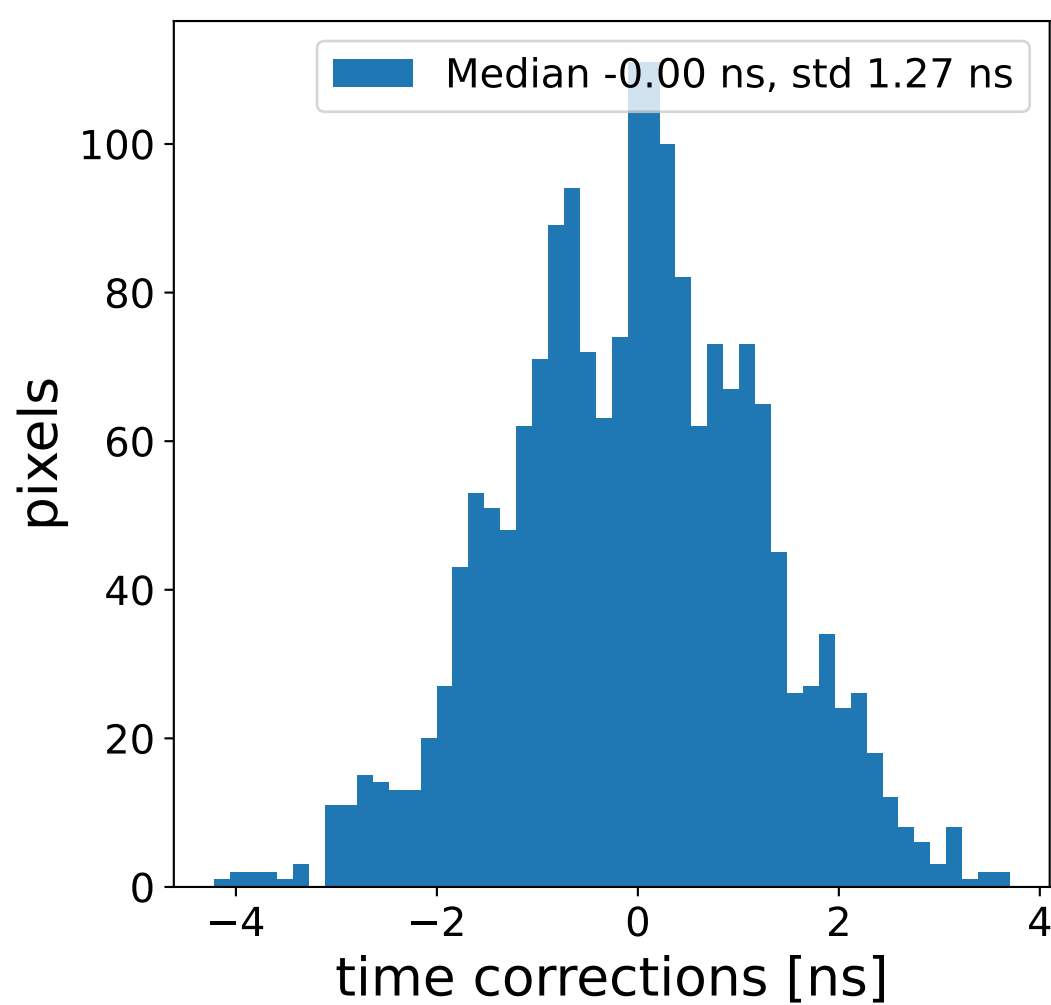
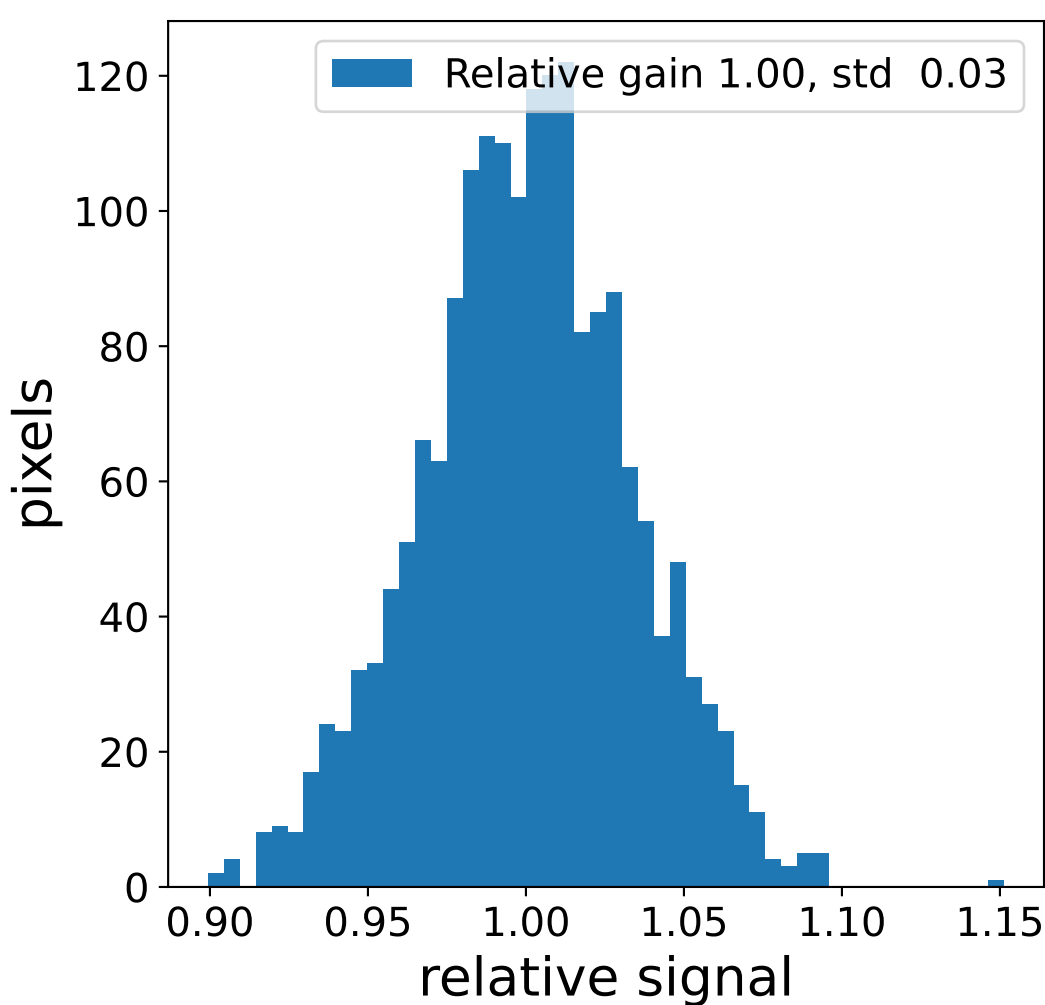
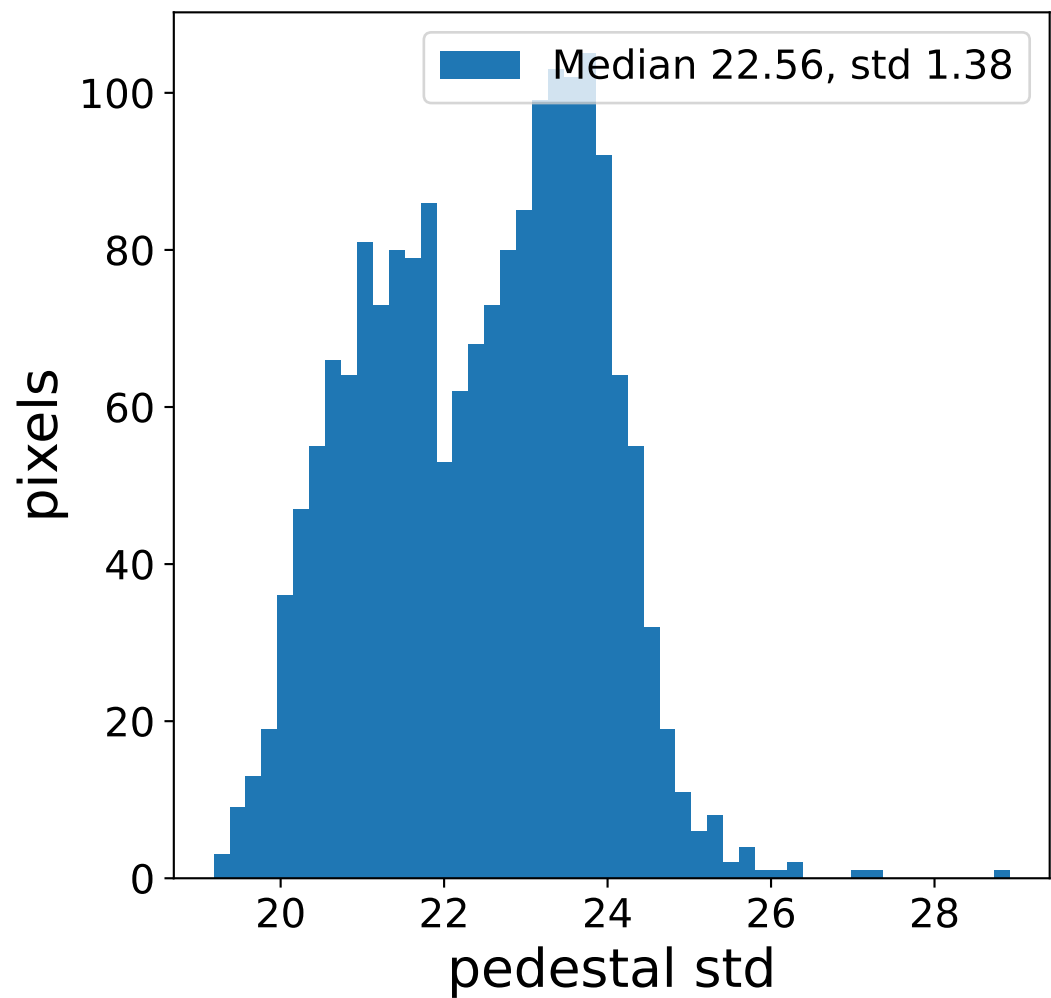
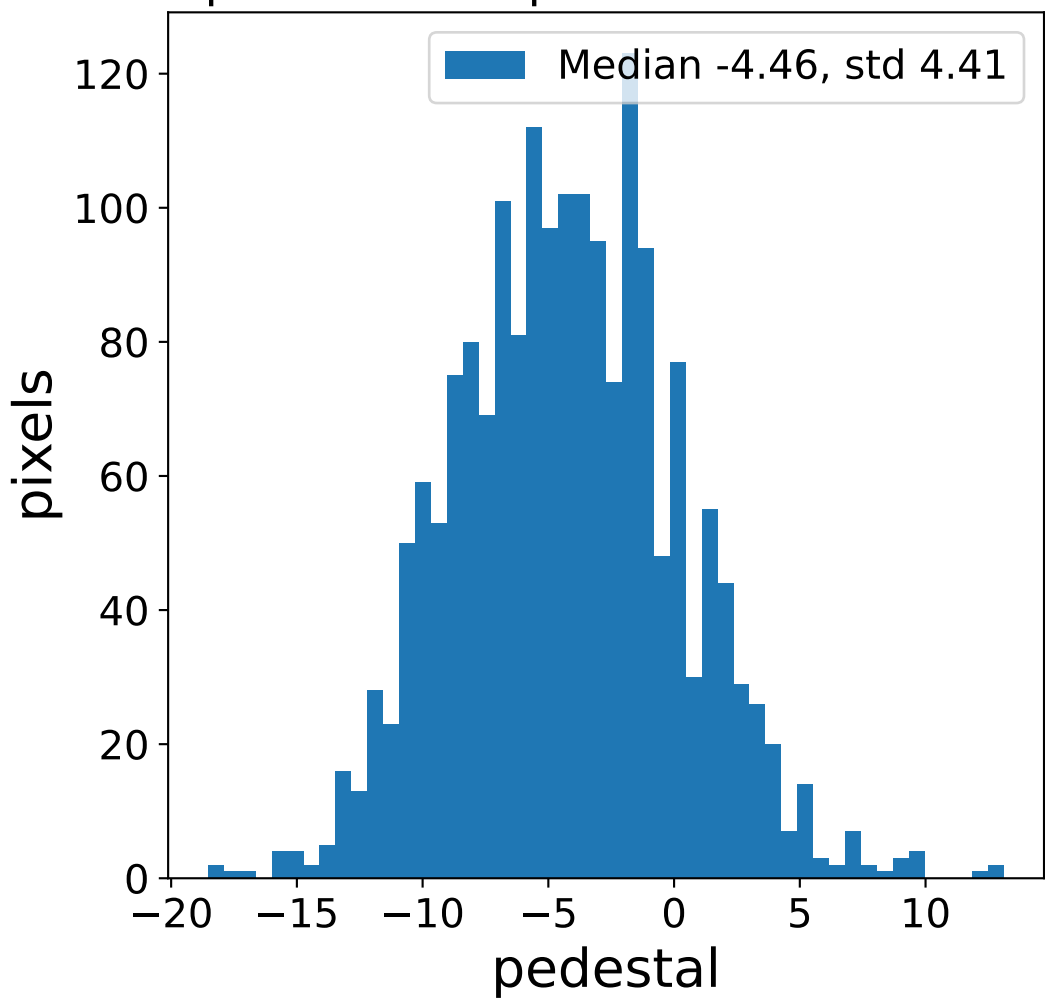


Run 13738 channel: LG

FF sample of 10000 events



pedestal sample of 10000 events



flat-fielded gain [ADC/pe]

