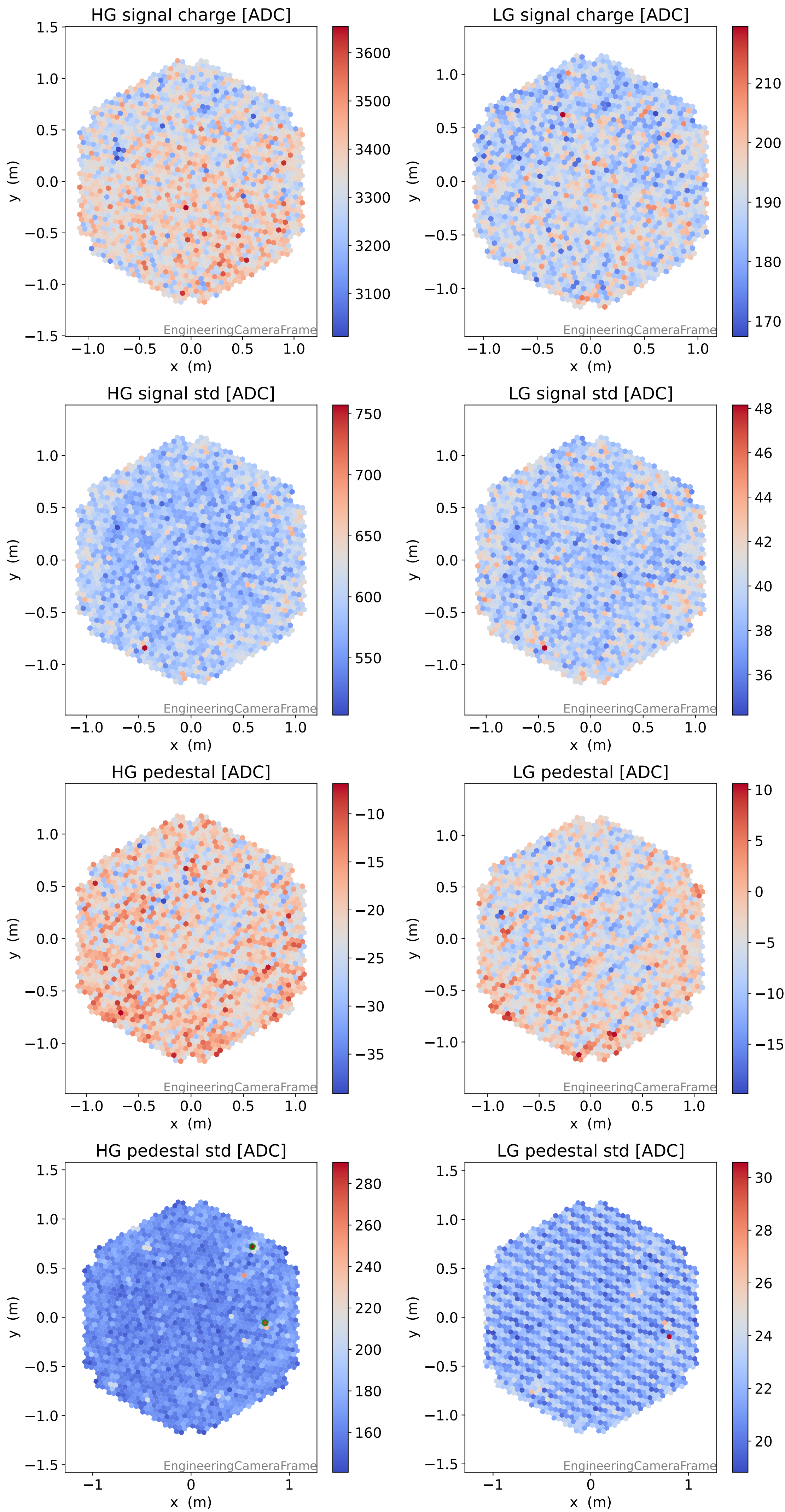
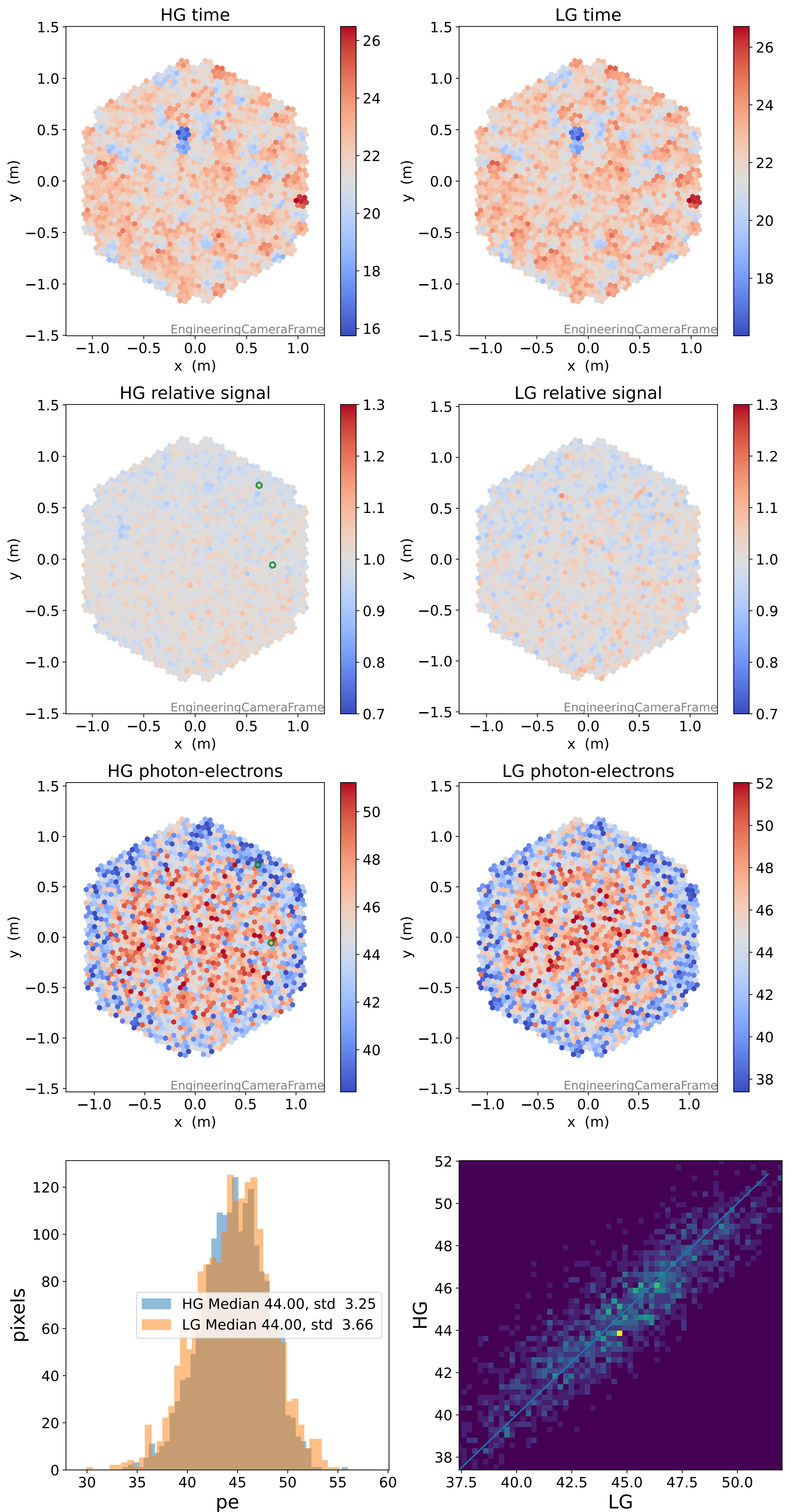


# Run 12926

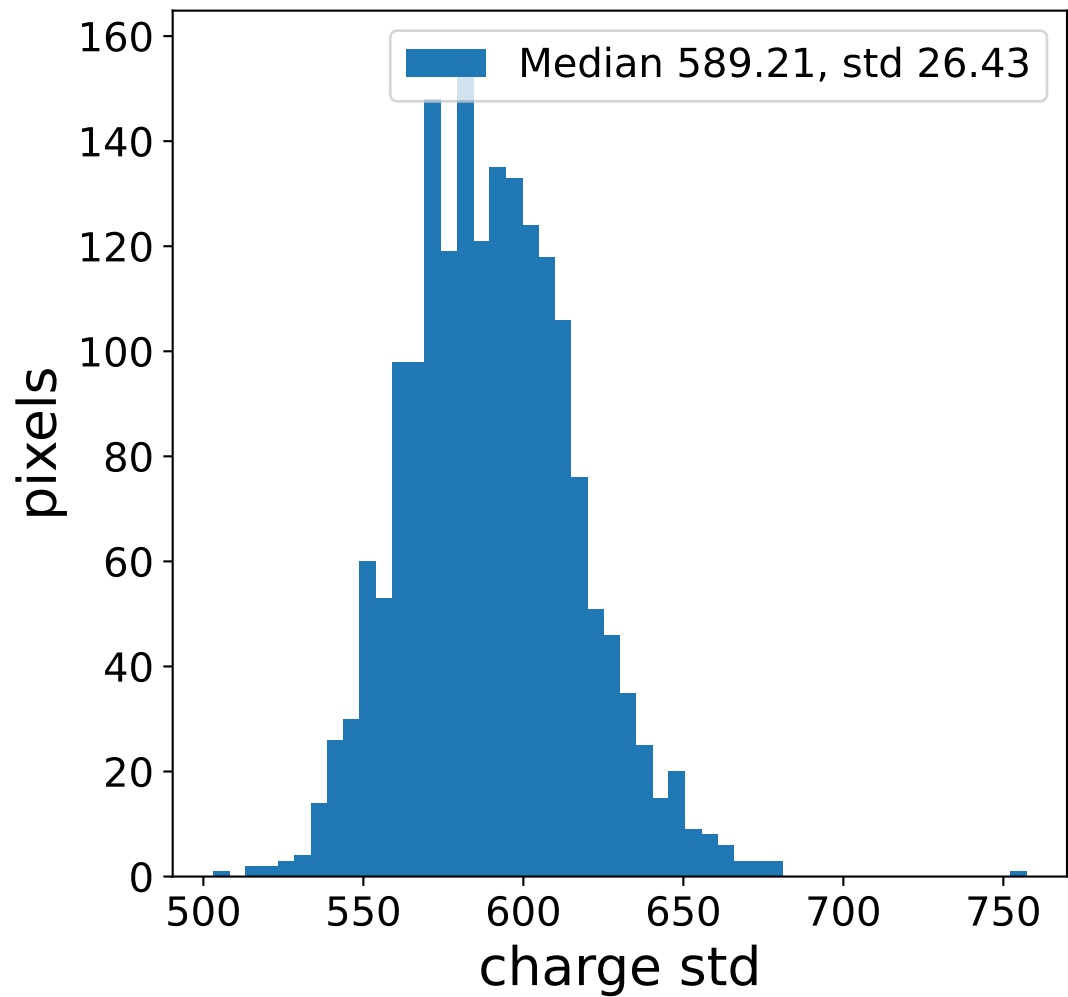
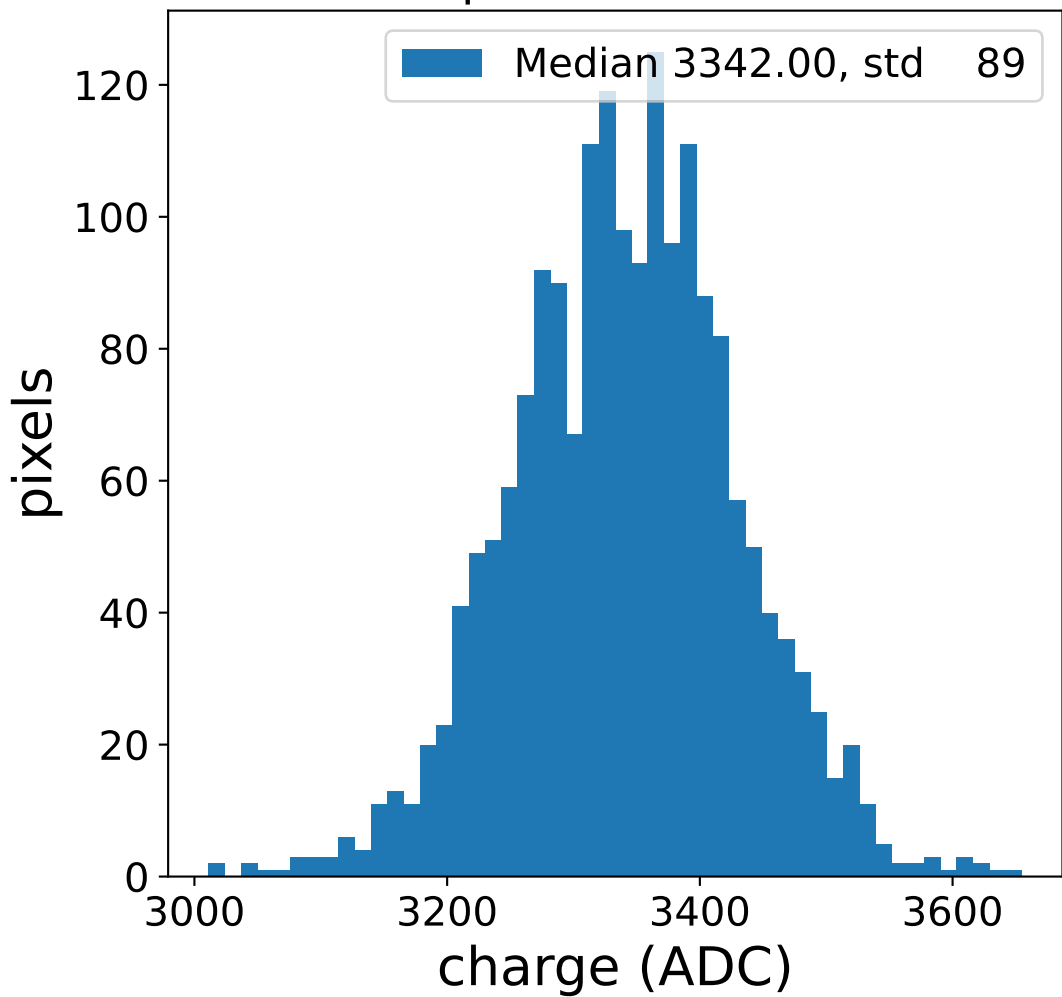


# Run 12926

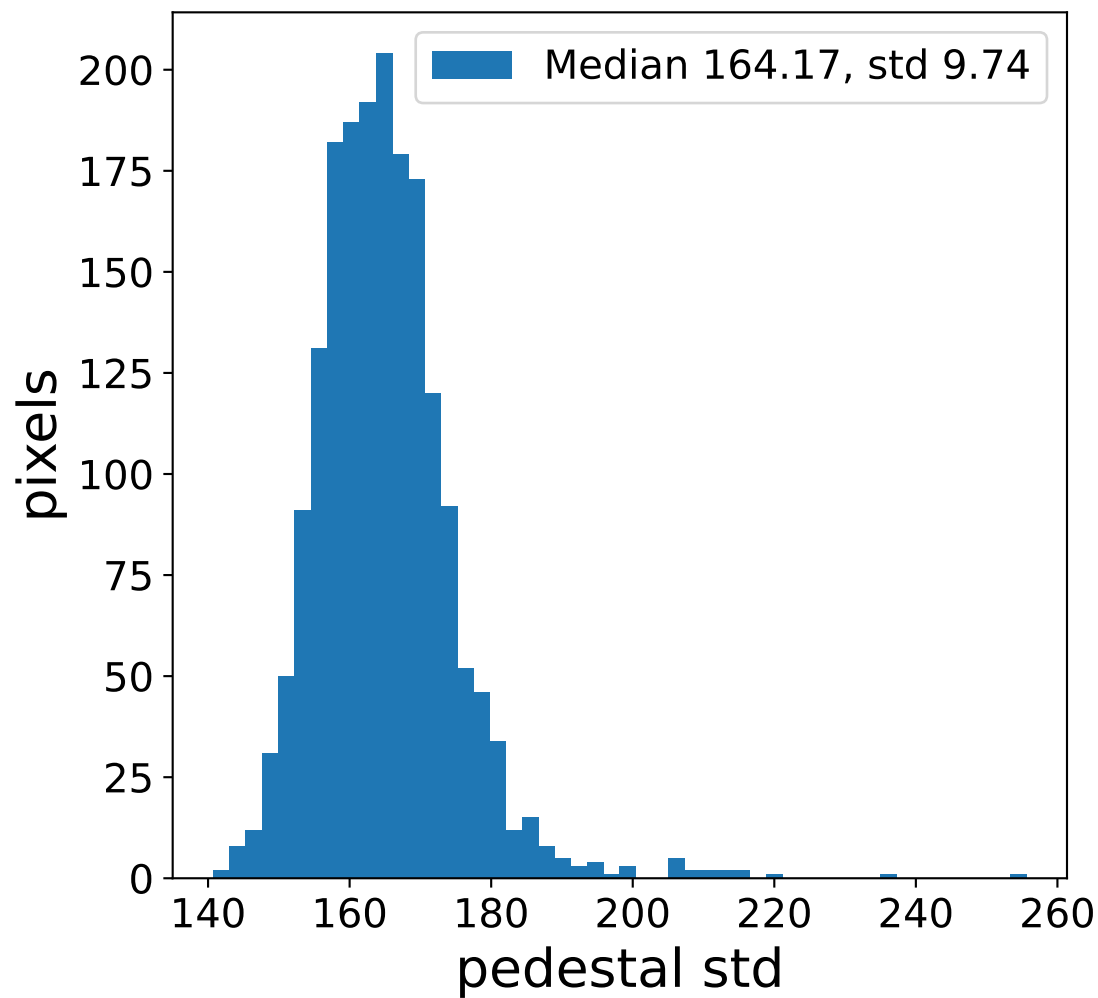
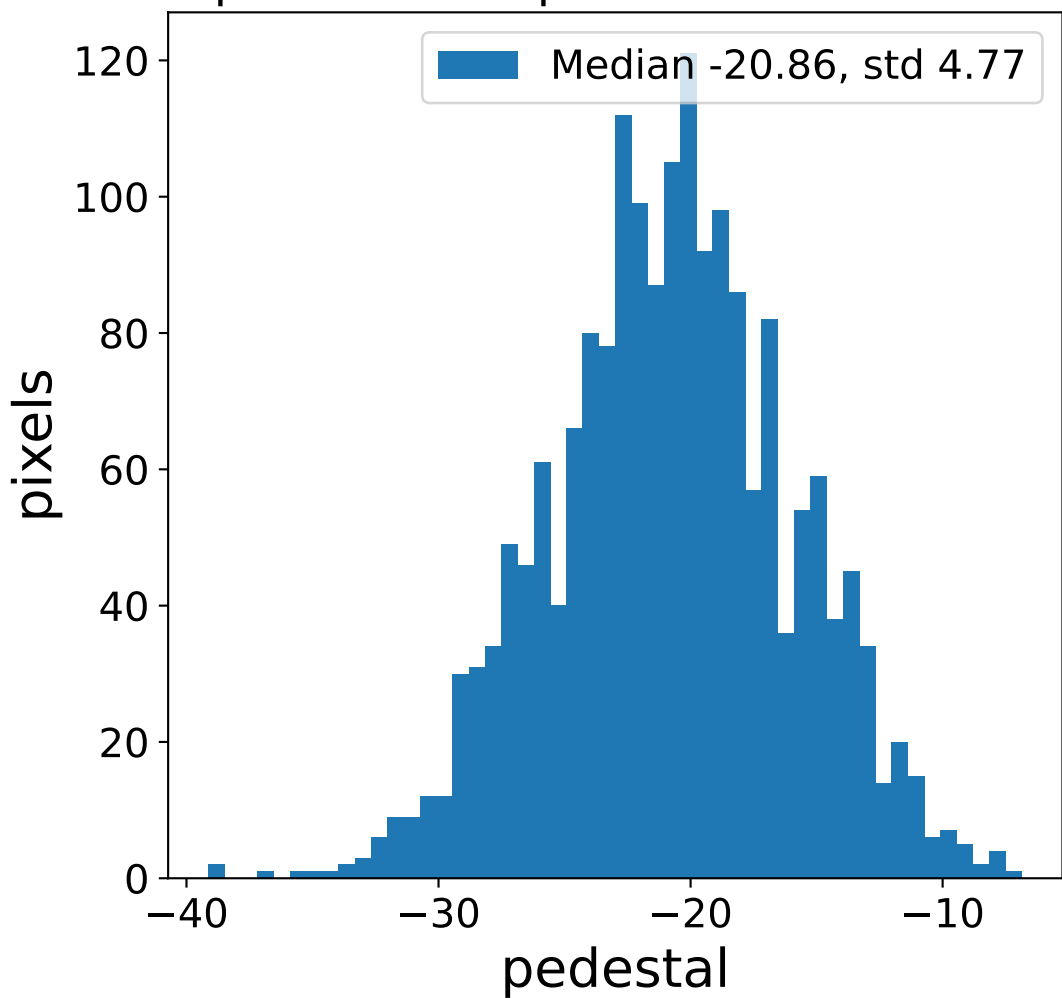


# Run 12926 channel: HG

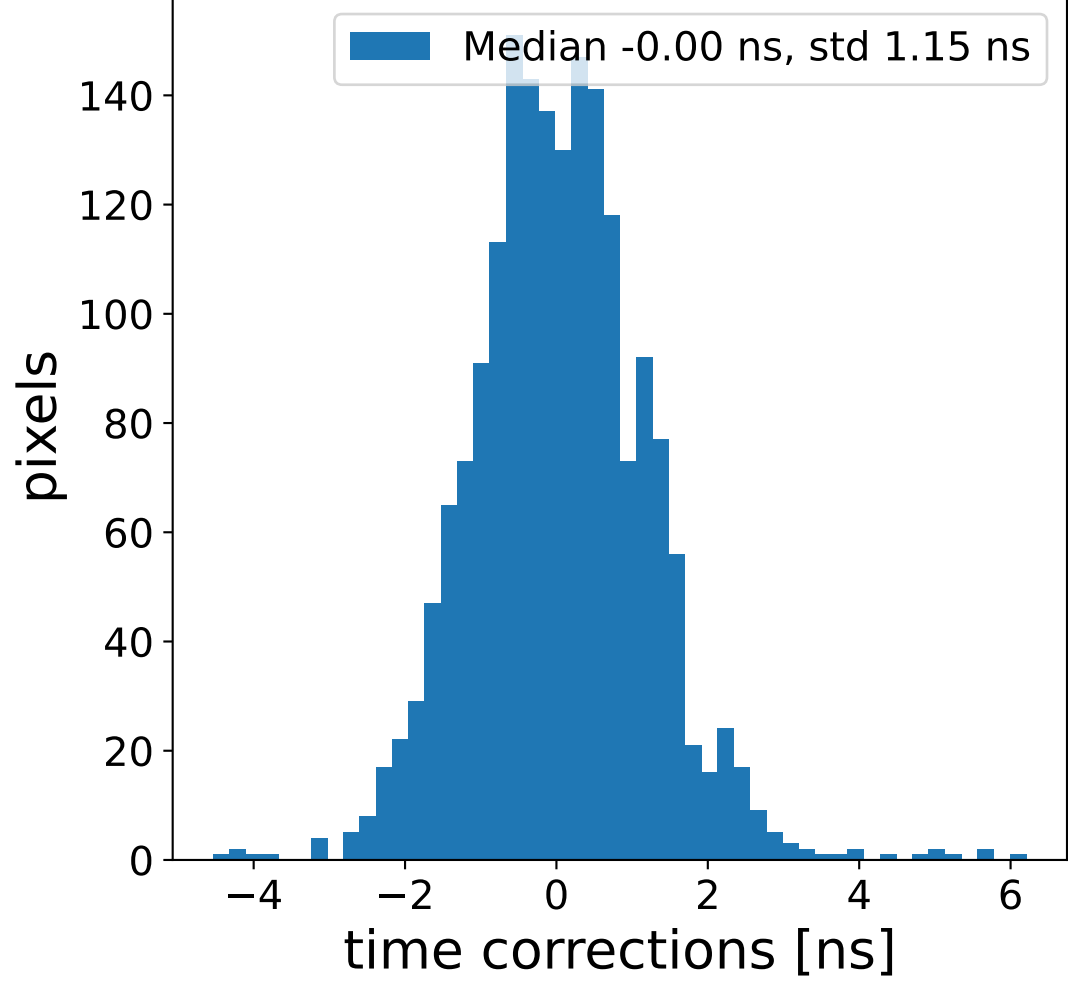
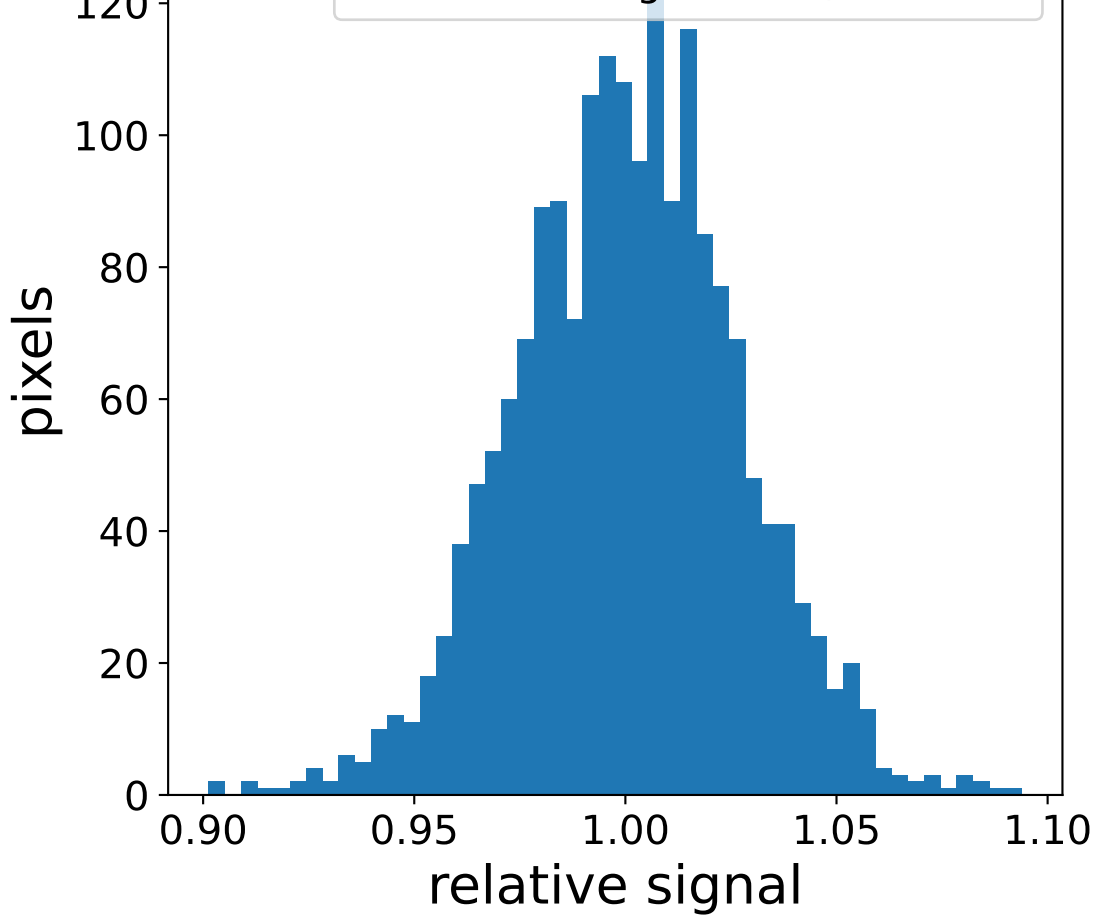
## FF sample of 10000 events



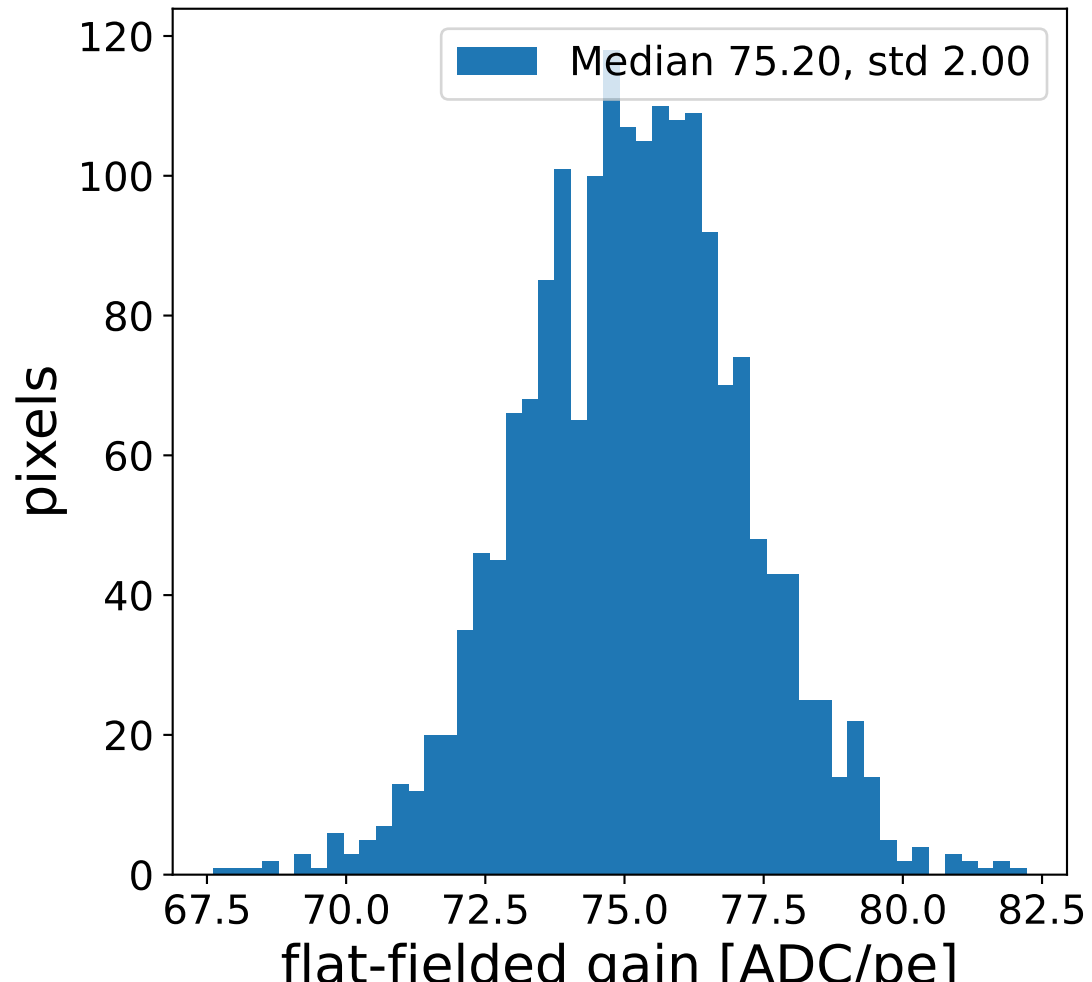
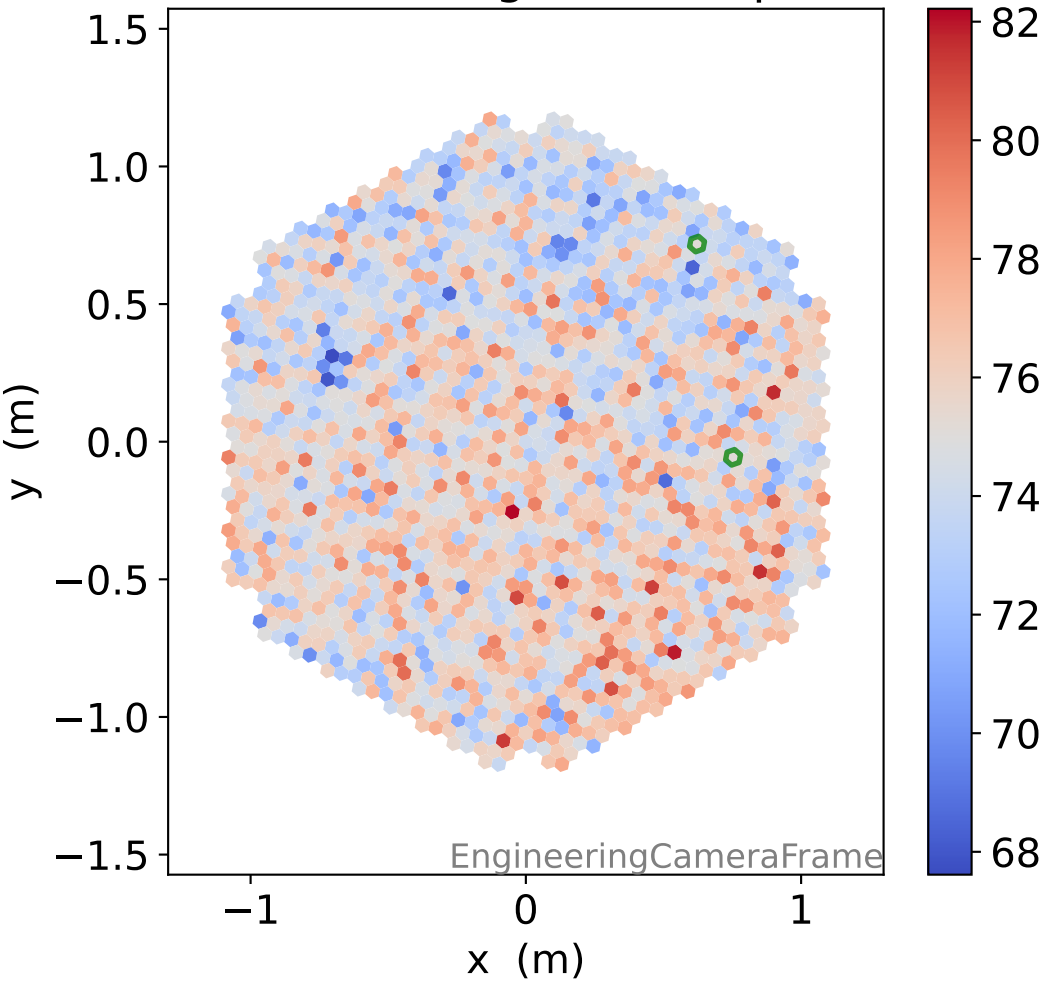
## pedestal sample of 10000 events



## Relative gain 1.00, std 0.03

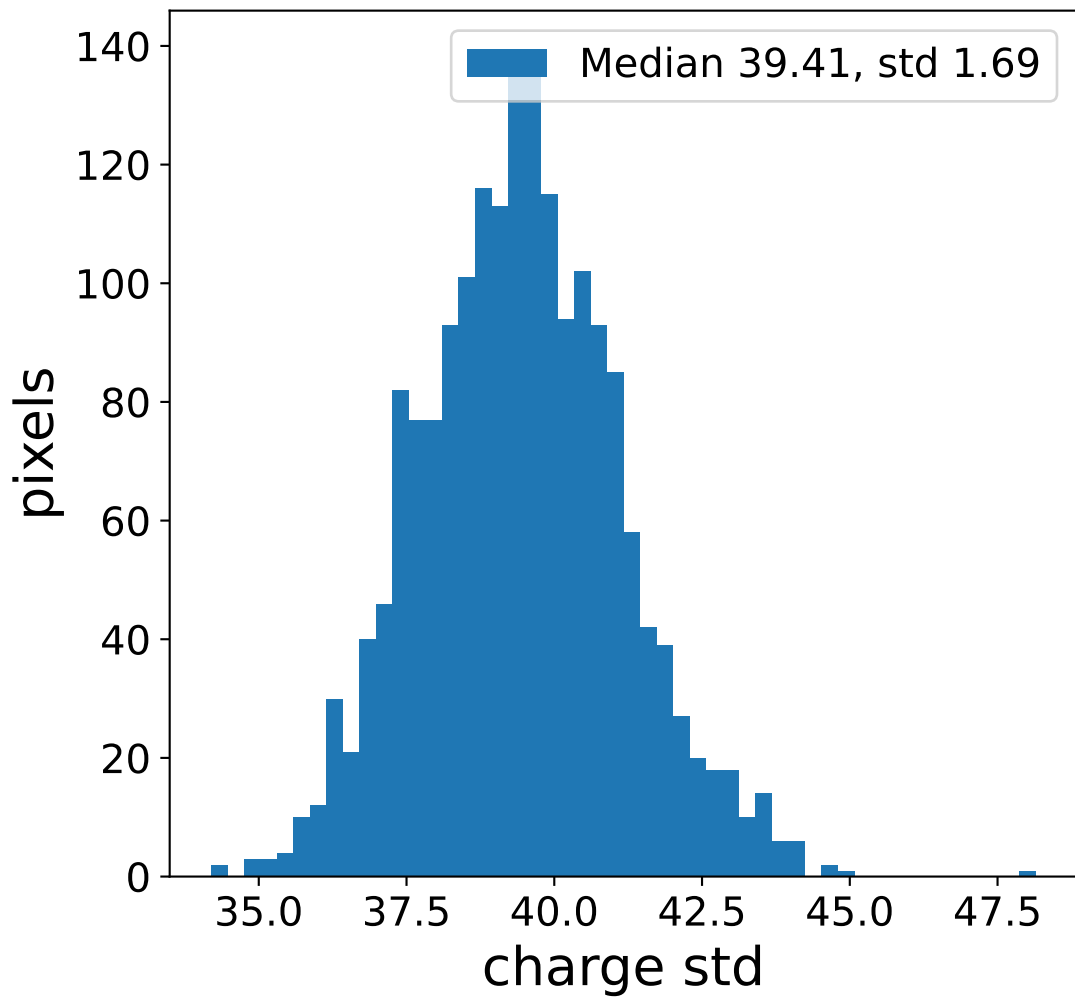
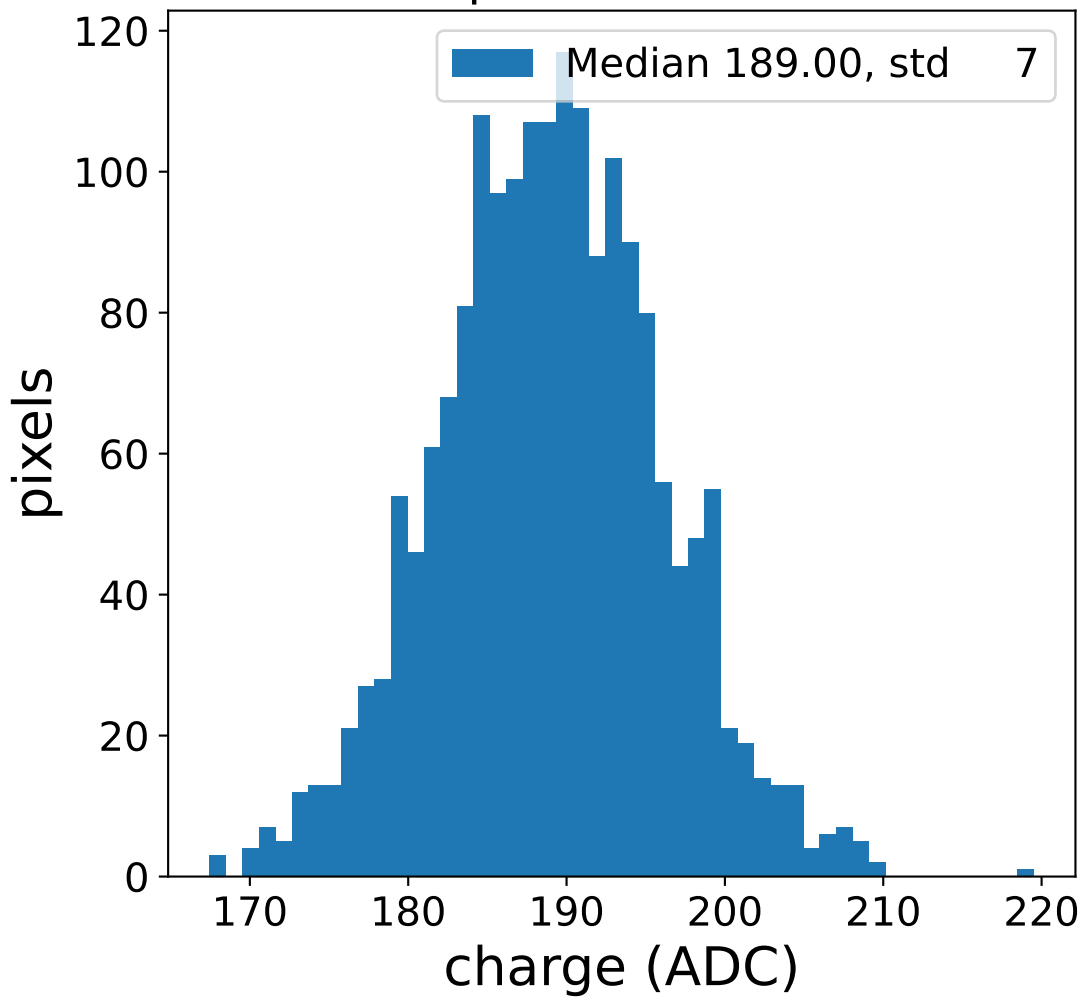


## flat-fielded gain [ADC/pe]

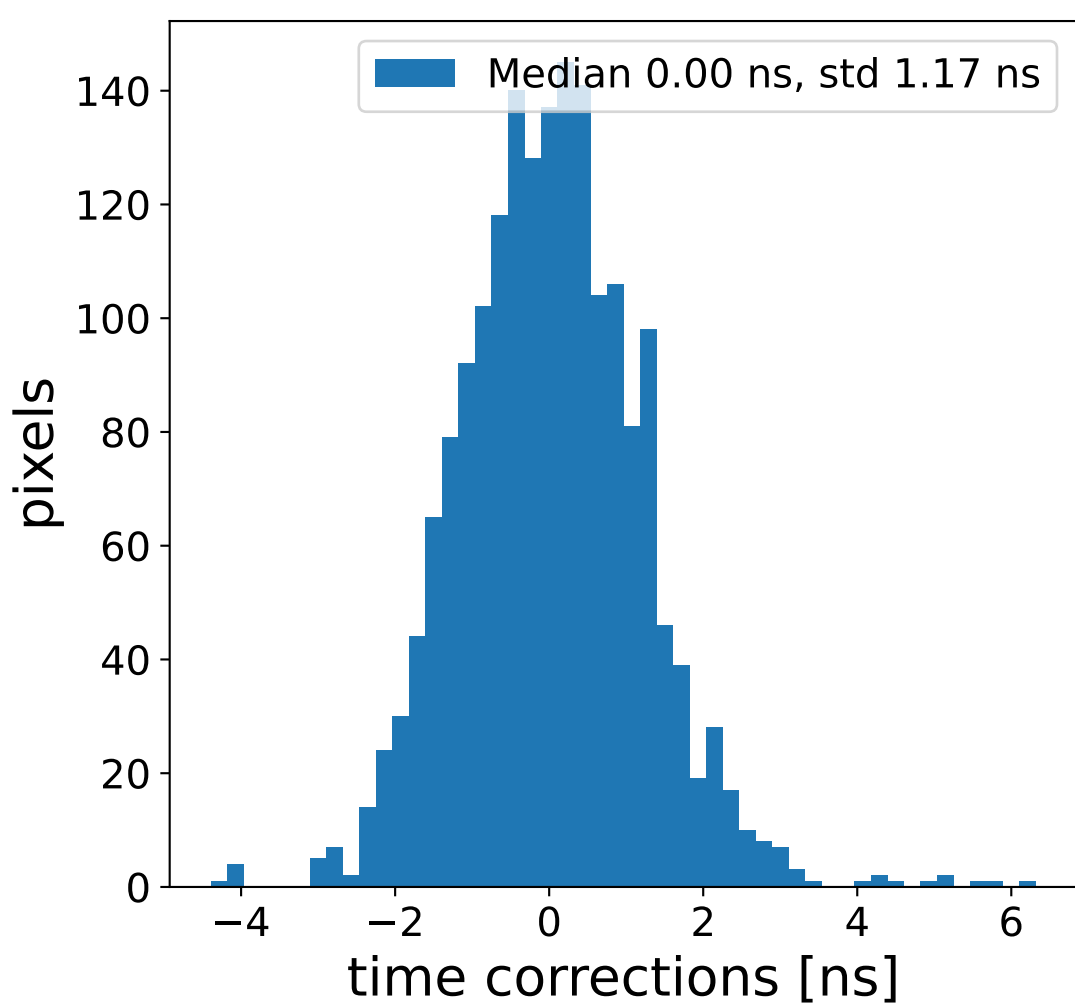
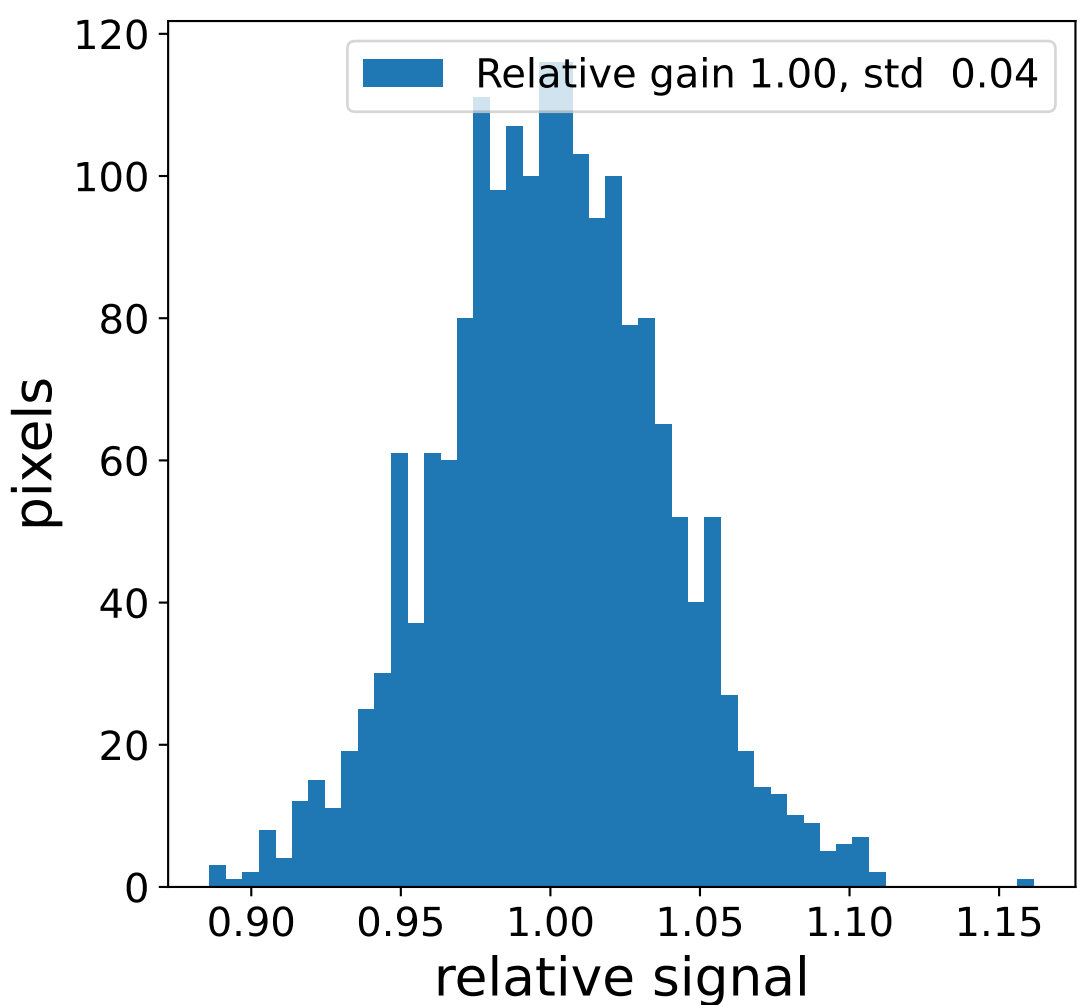
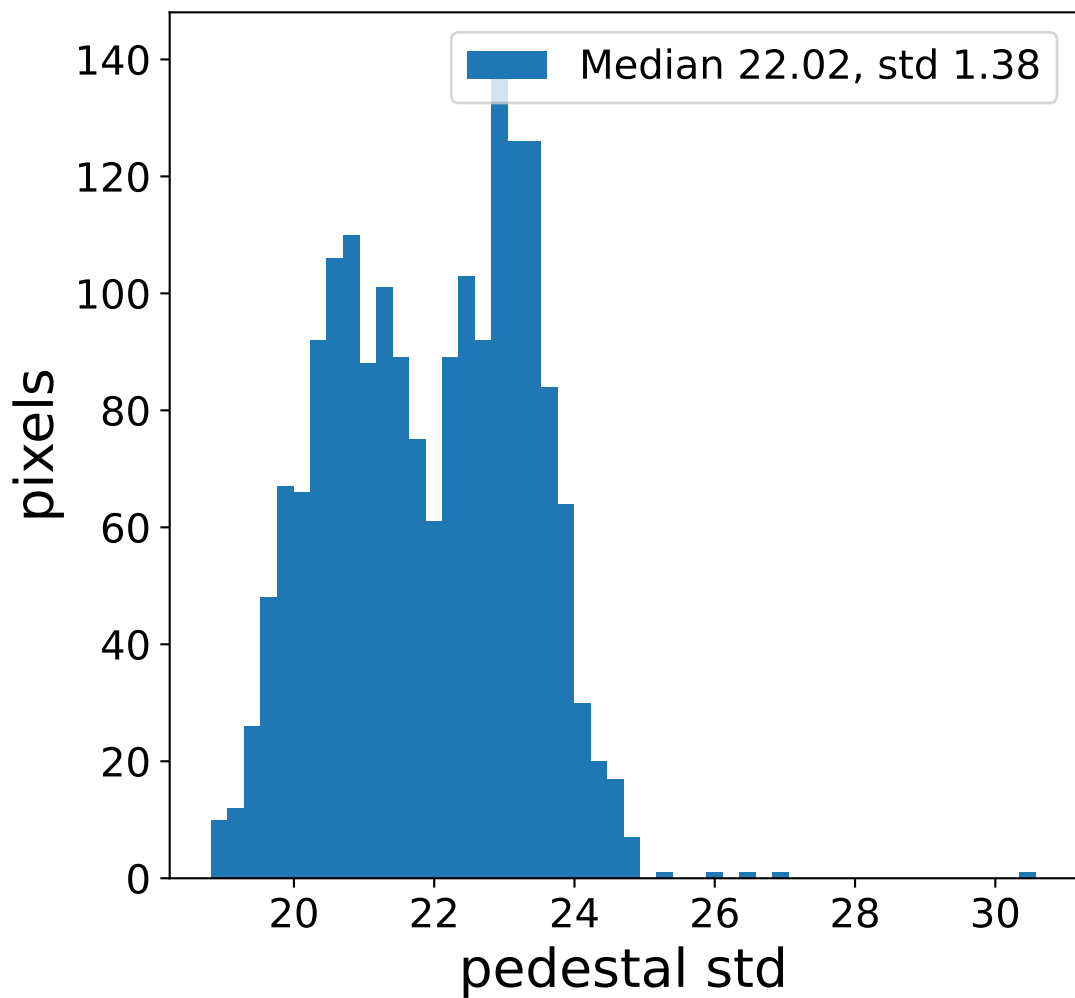
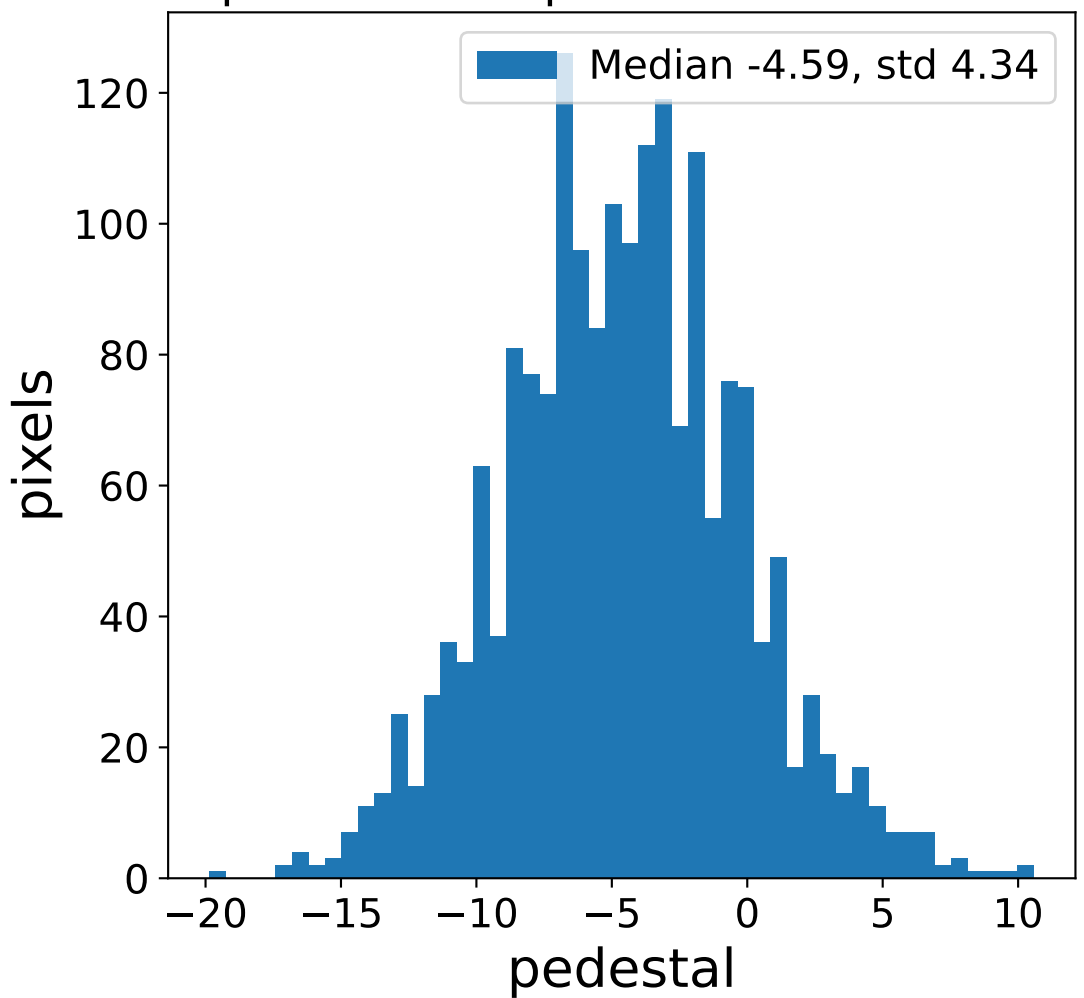


# Run 12926 channel: LG

## FF sample of 10000 events



## pedestal sample of 10000 events



## flat-fielded gain [ADC/pe]

