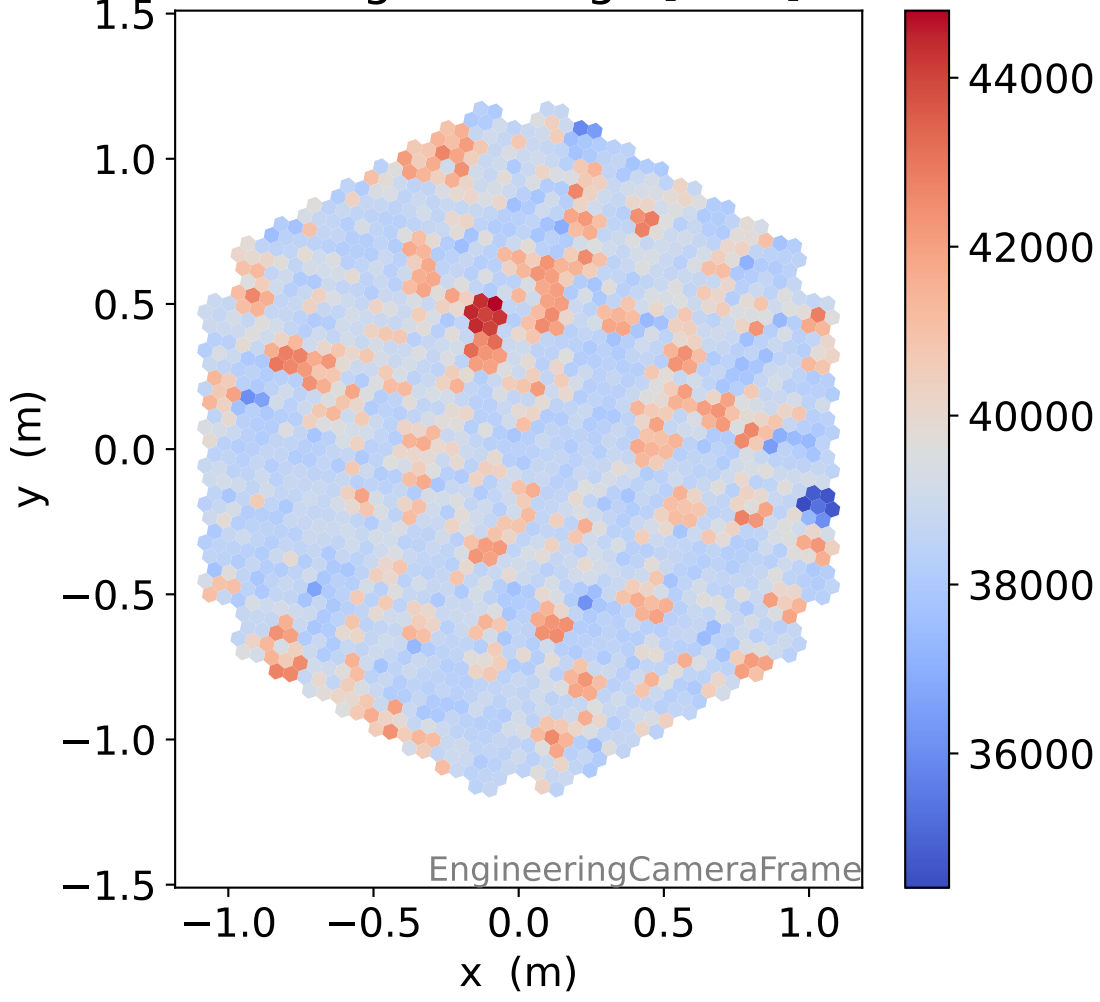
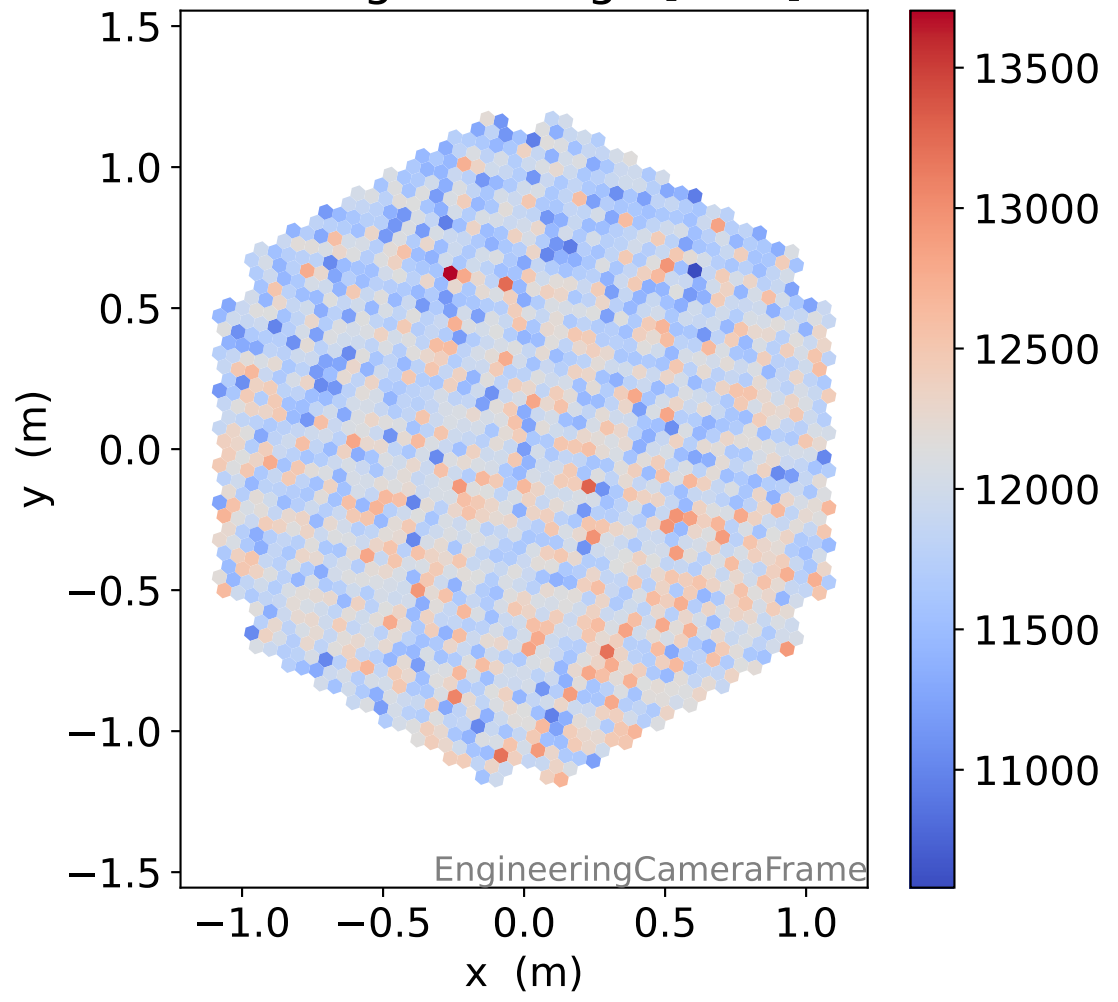


Run 12917

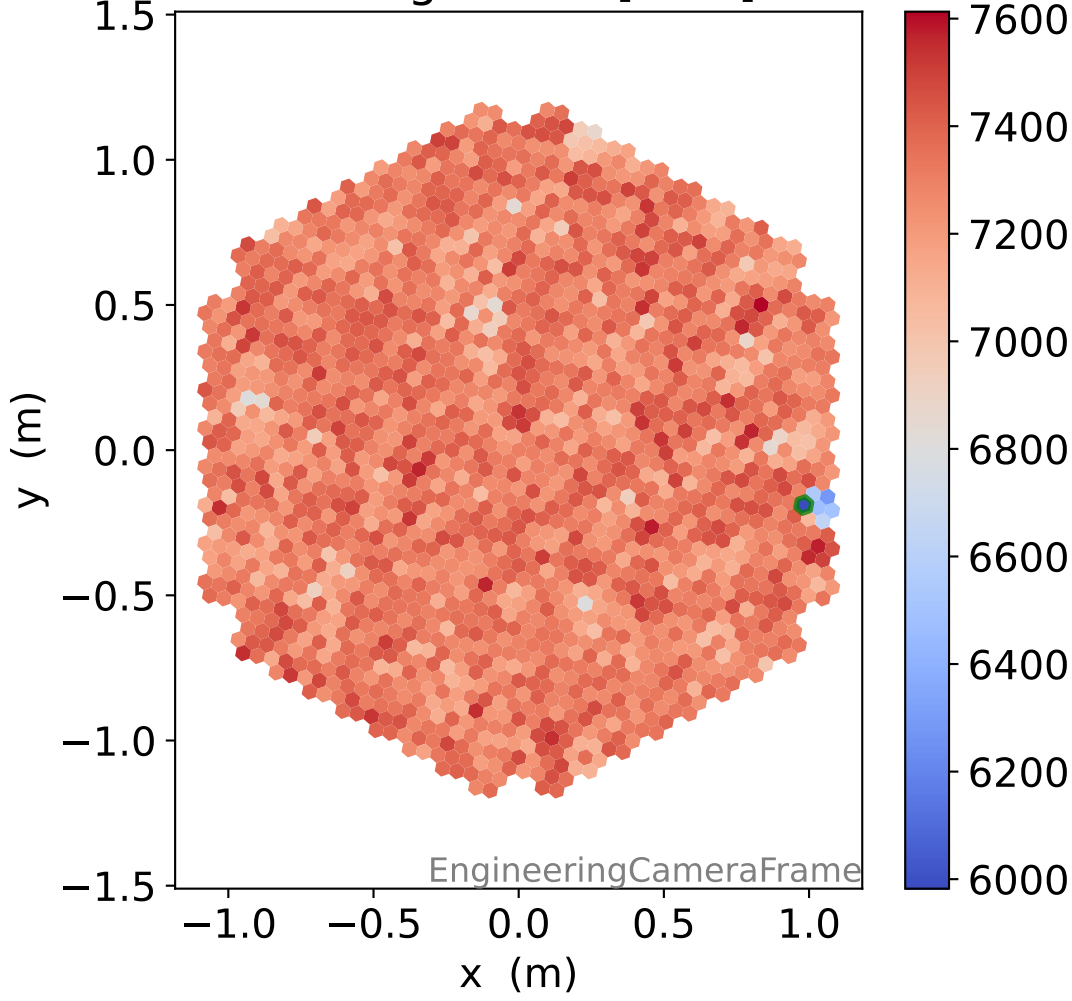
HG signal charge [ADC]



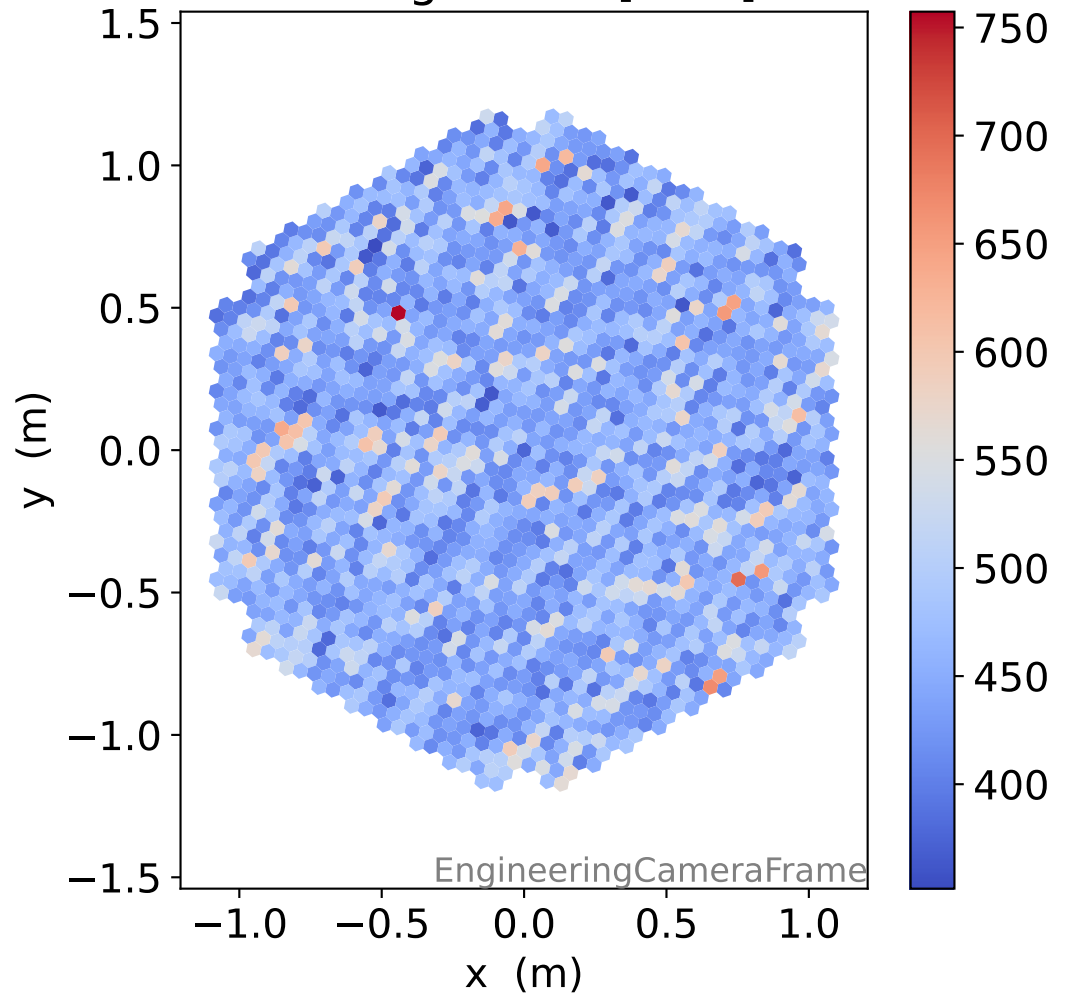
LG signal charge [ADC]



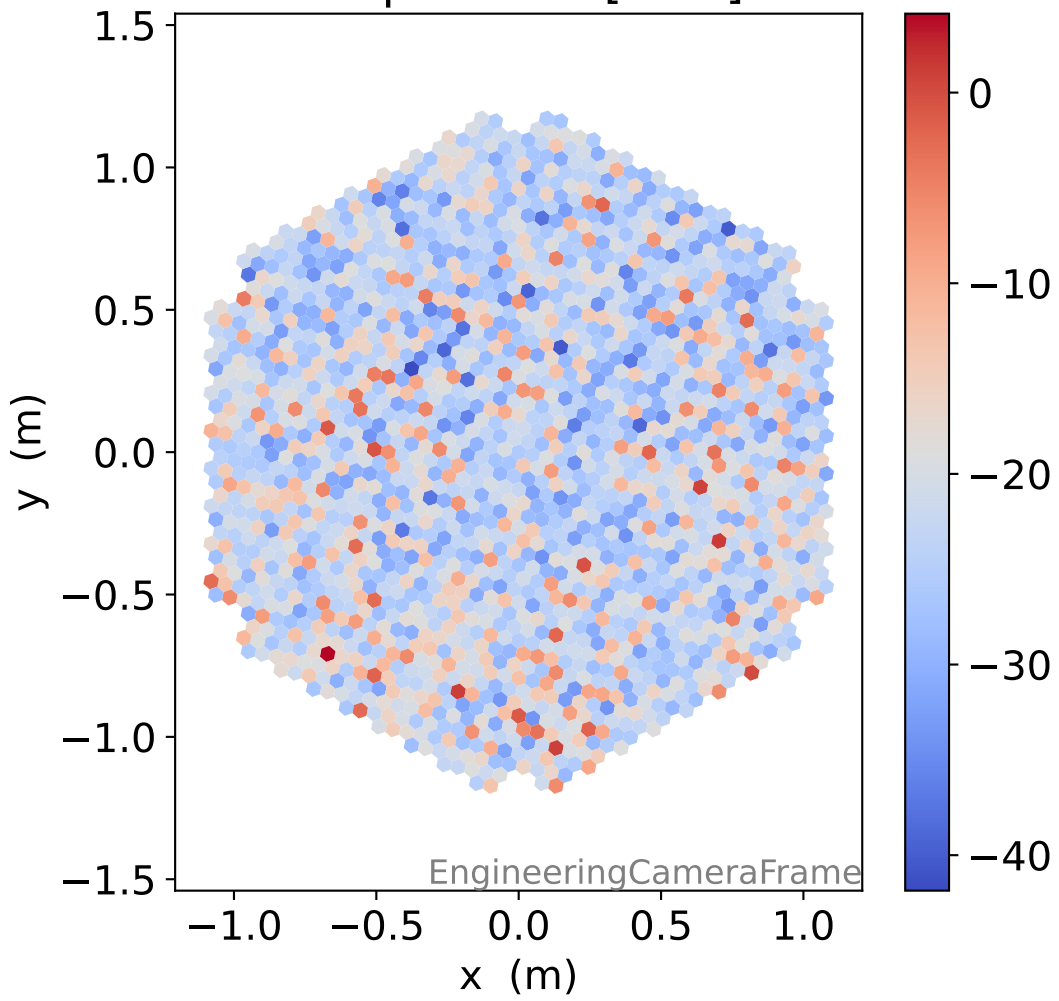
HG signal std [ADC]



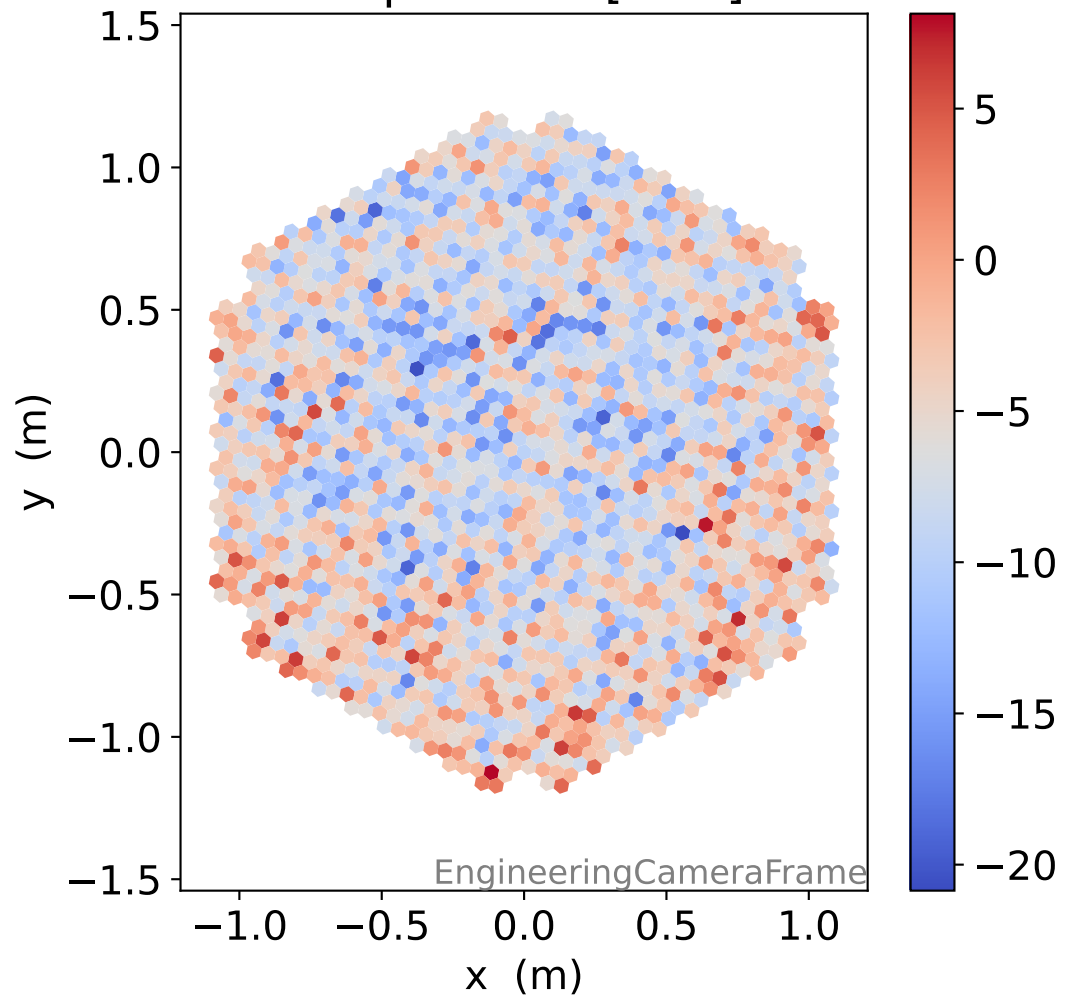
LG signal std [ADC]



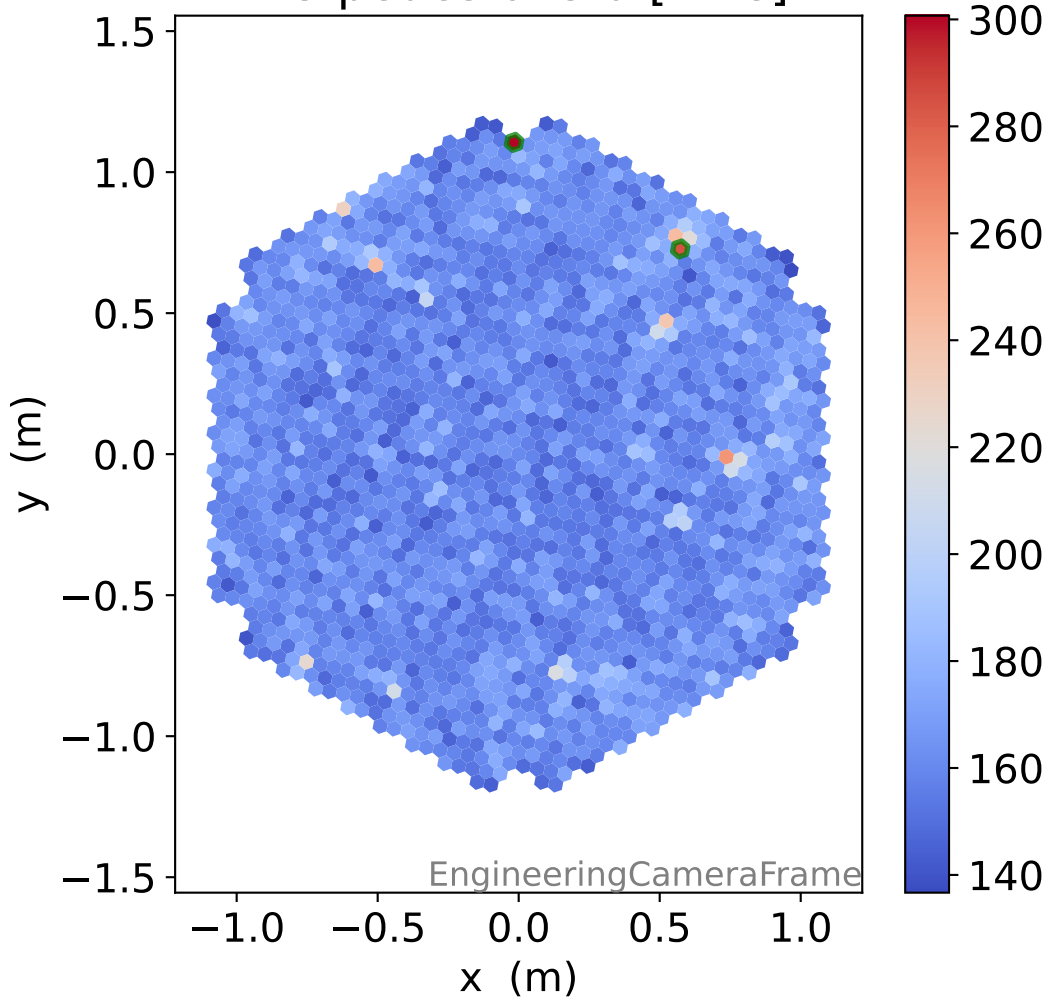
HG pedestal [ADC]



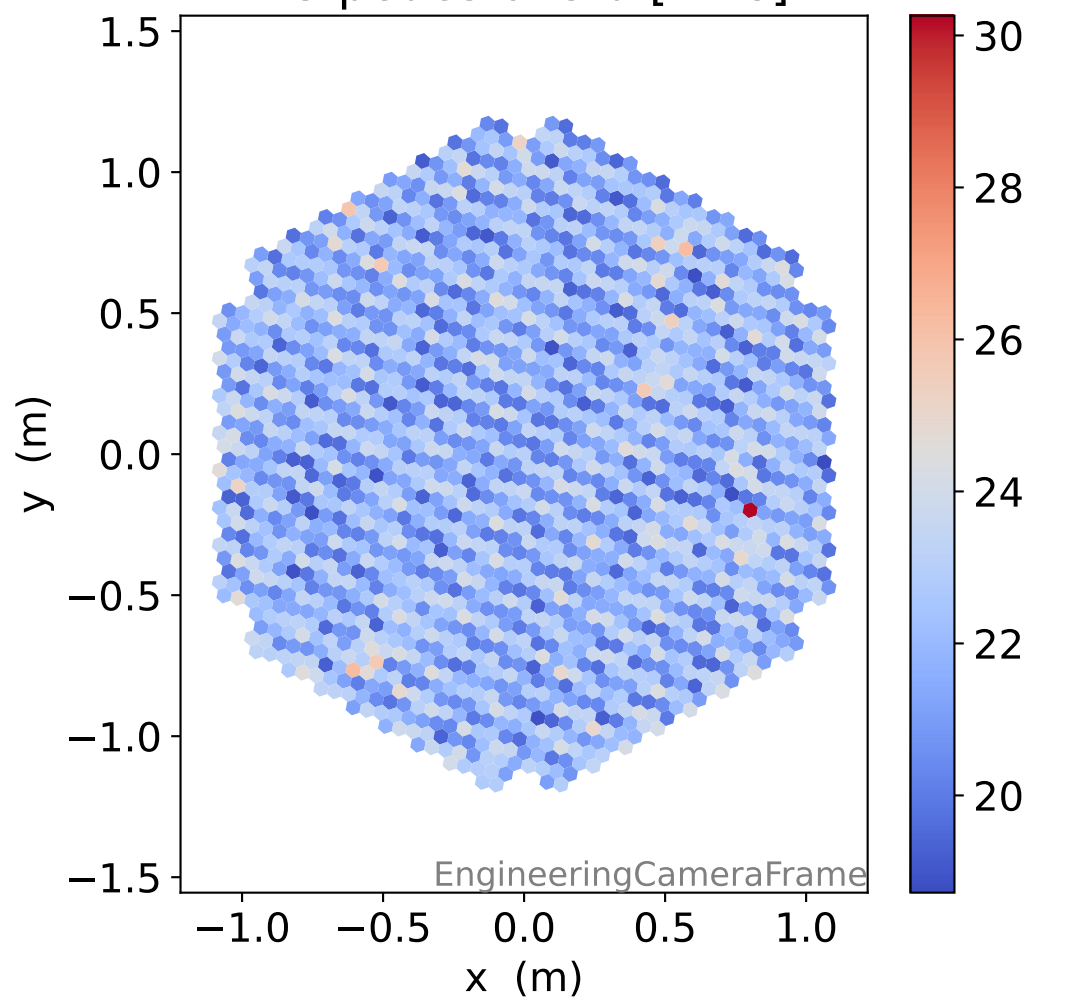
LG pedestal [ADC]



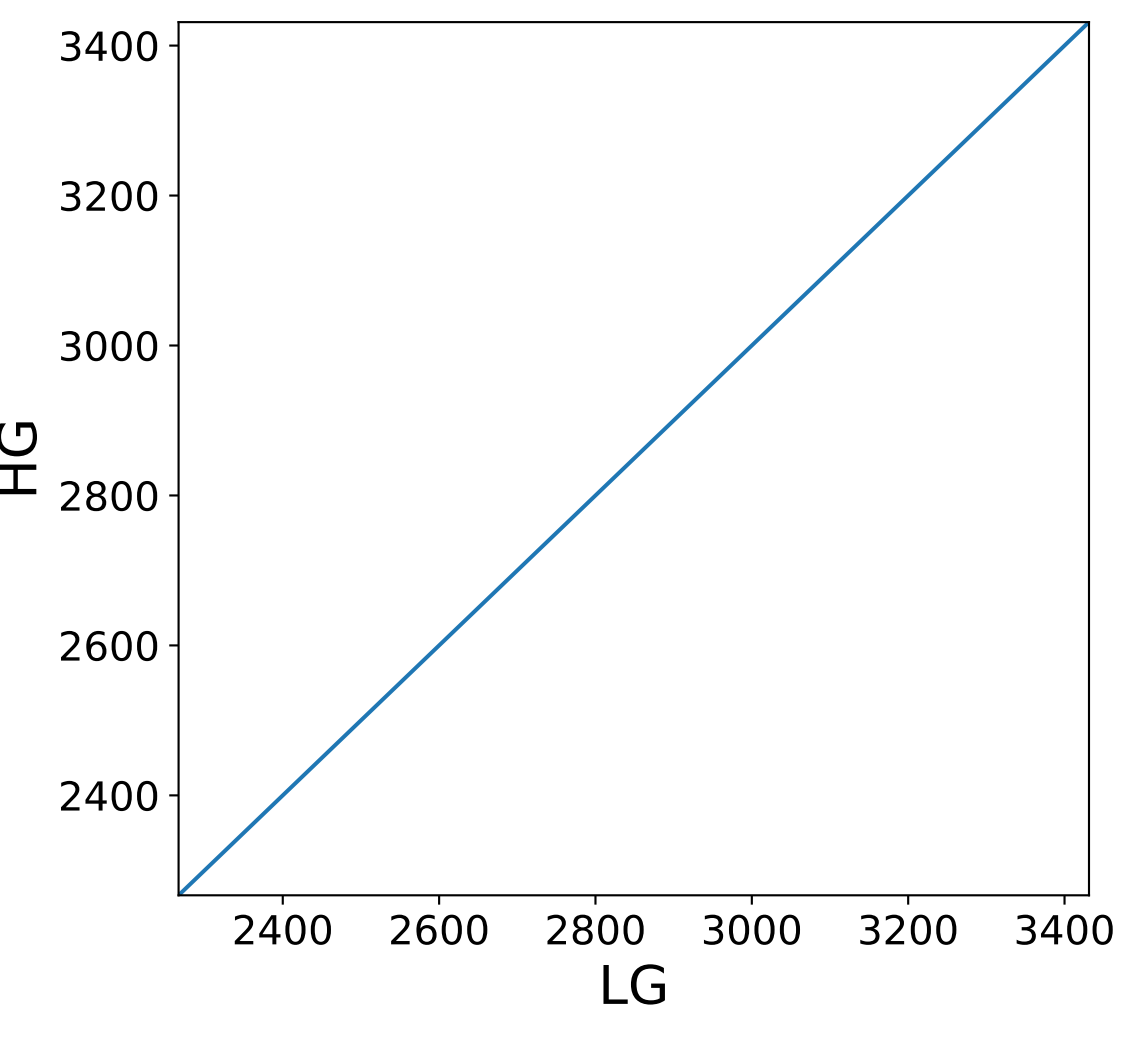
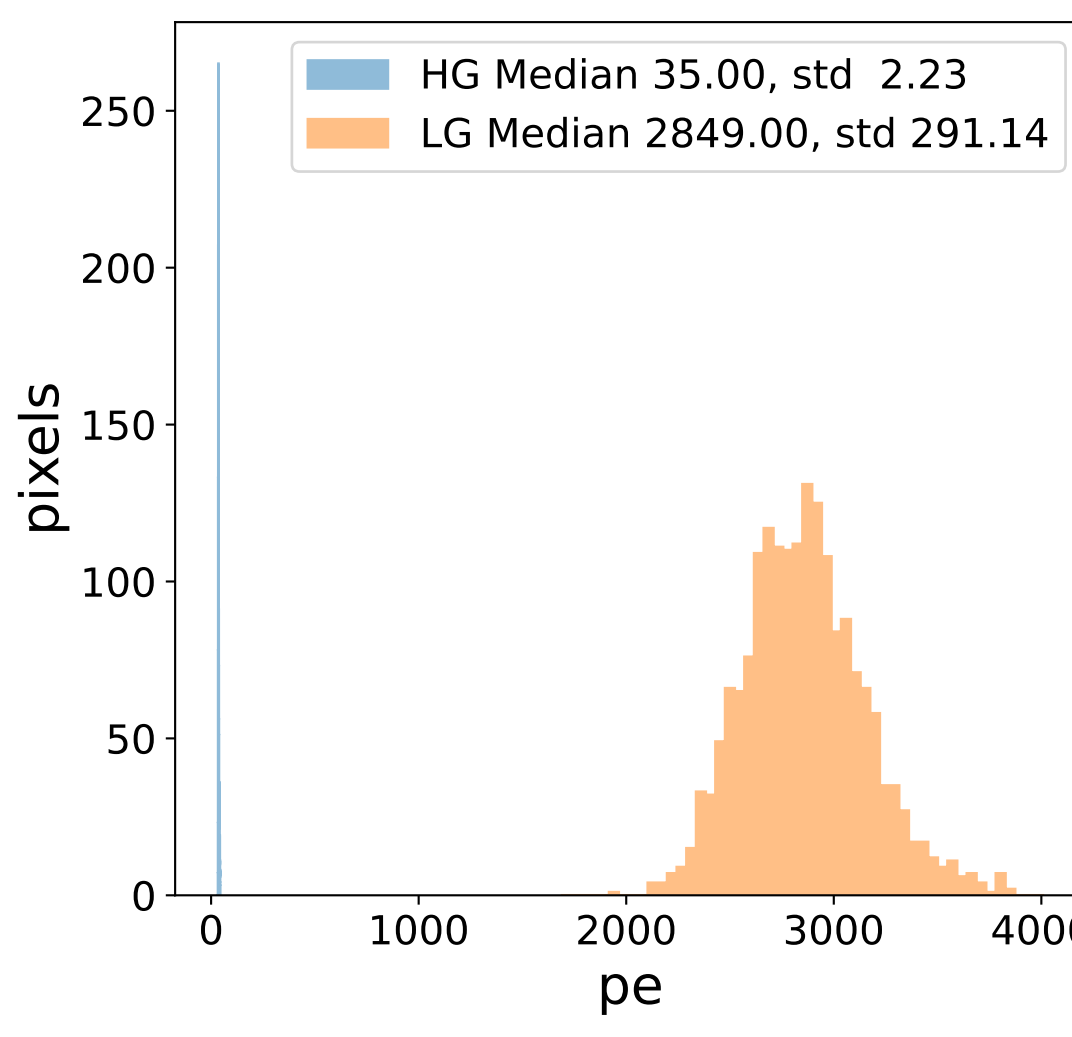
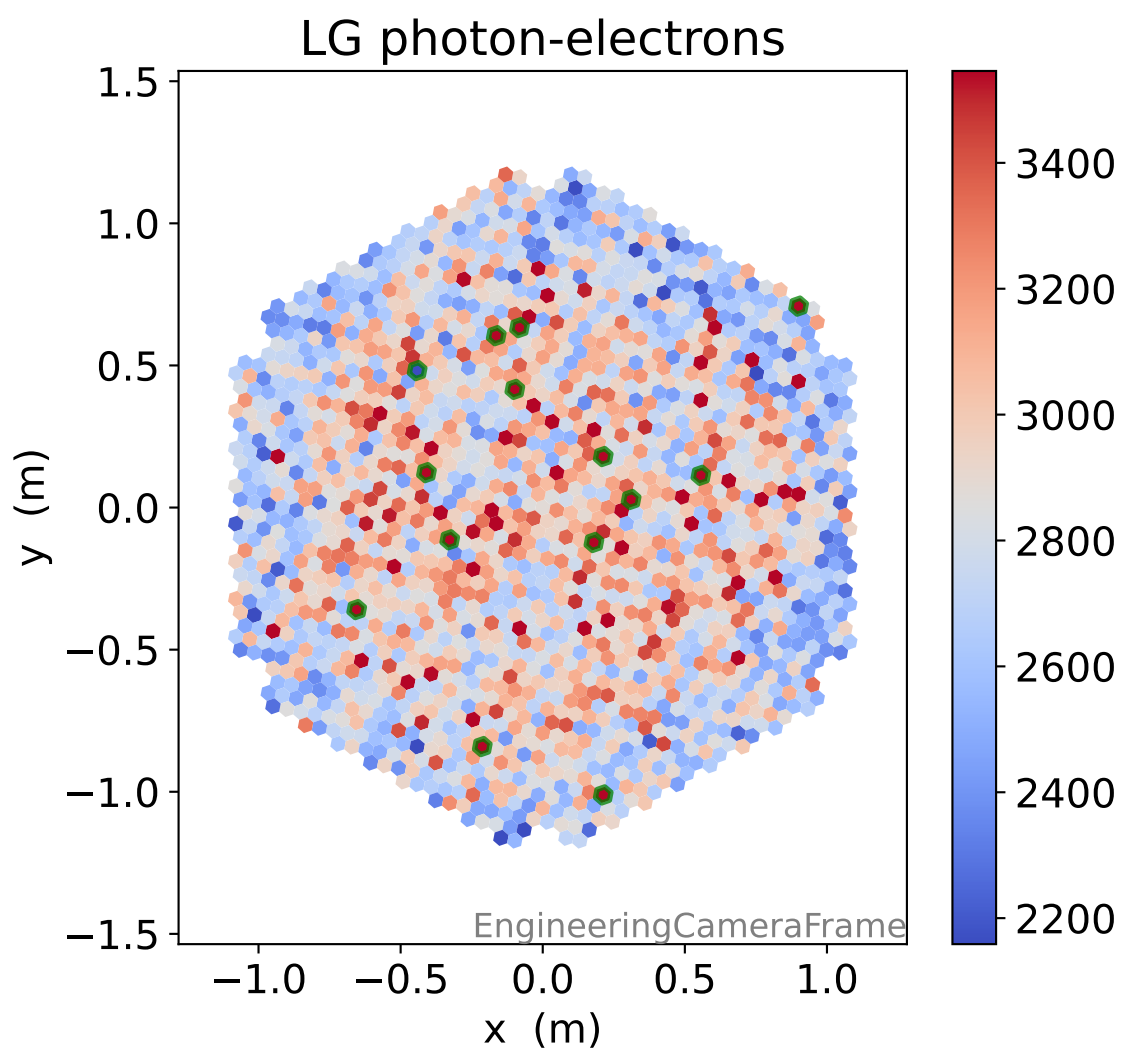
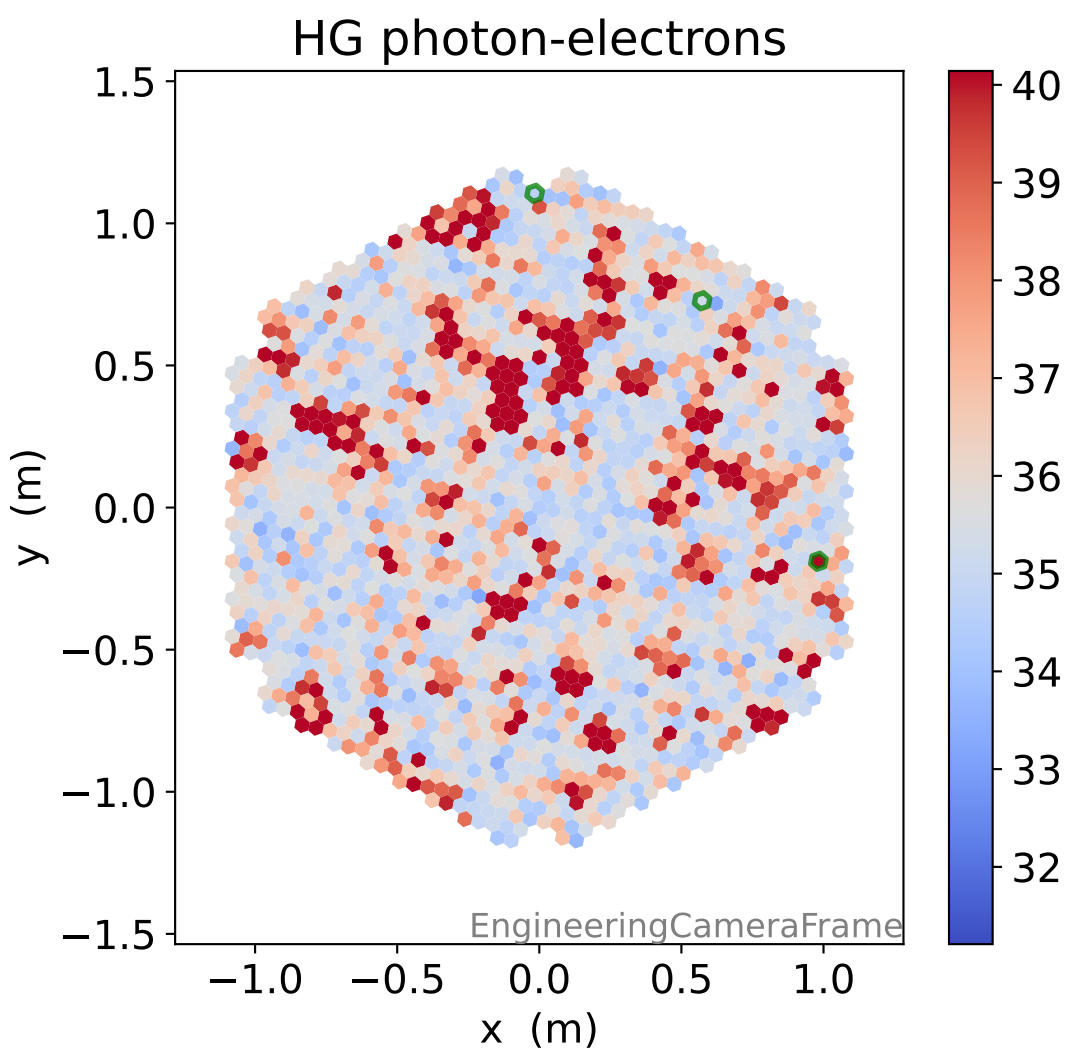
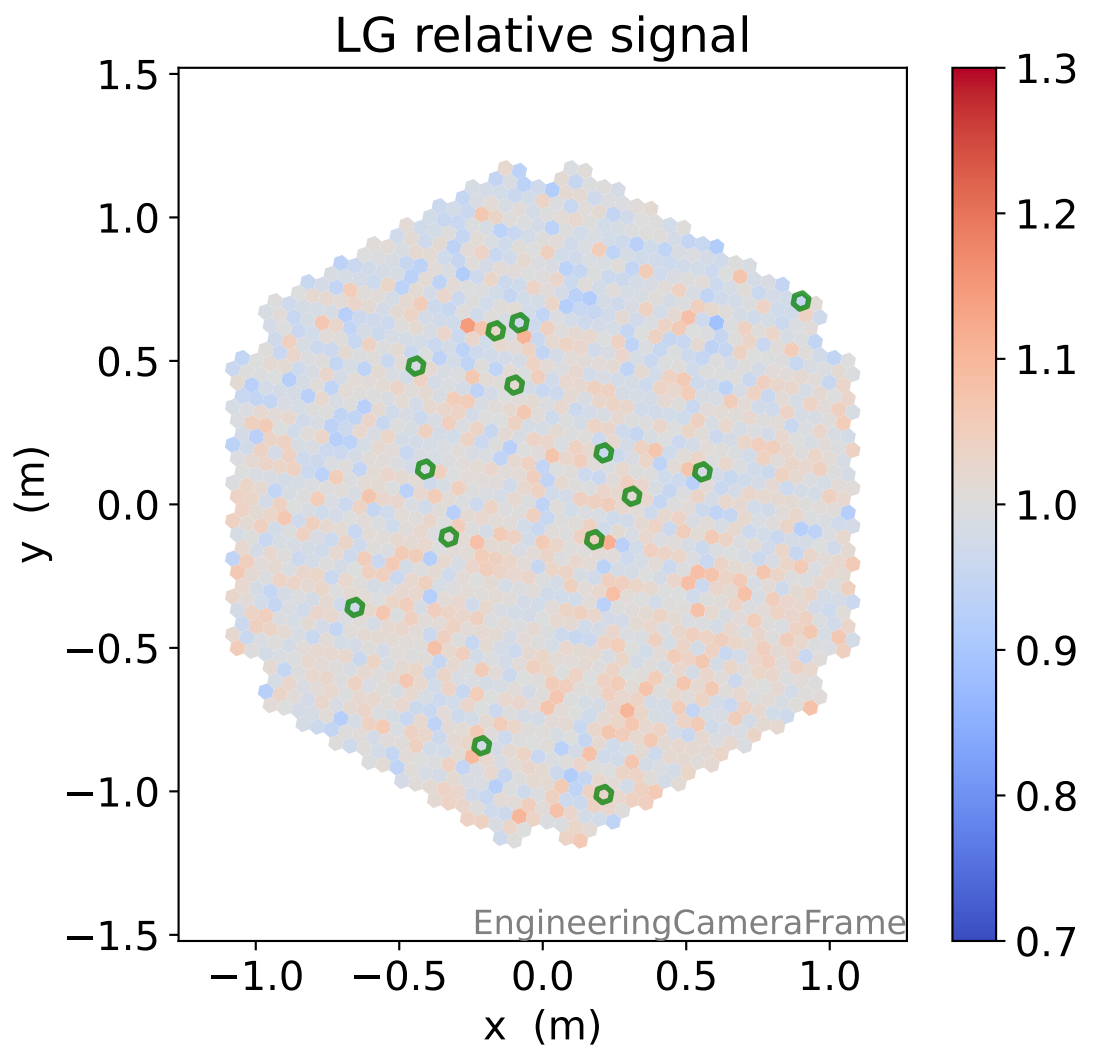
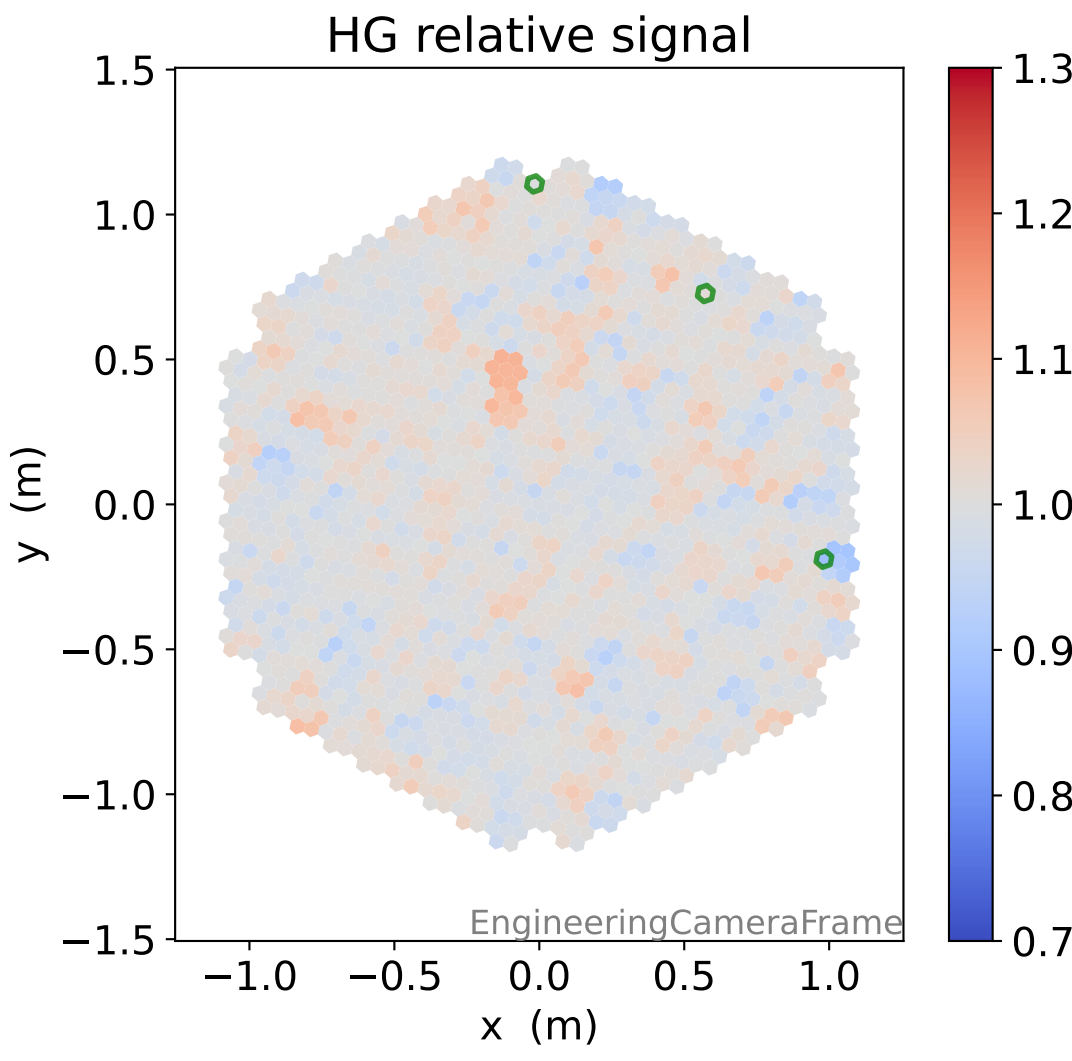
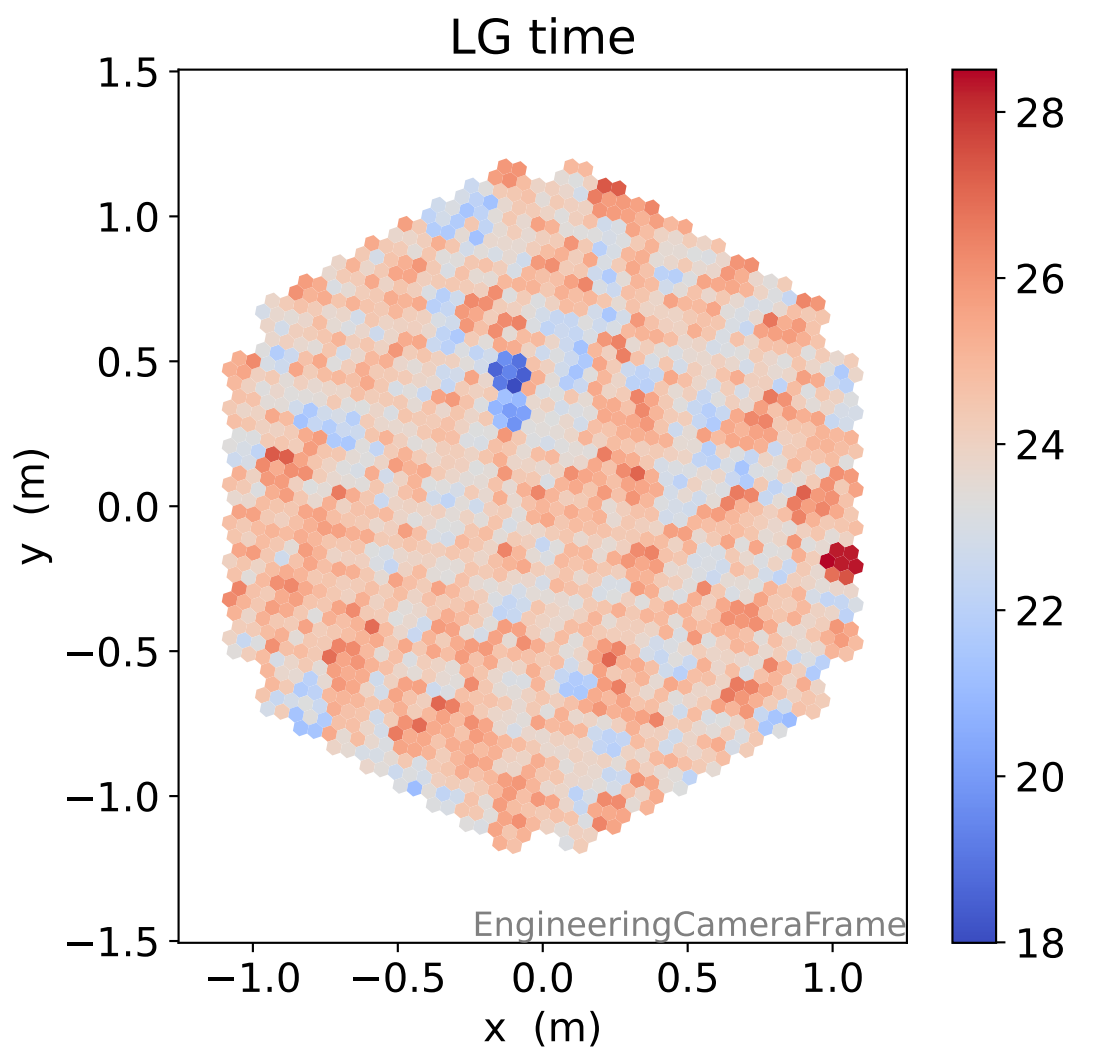
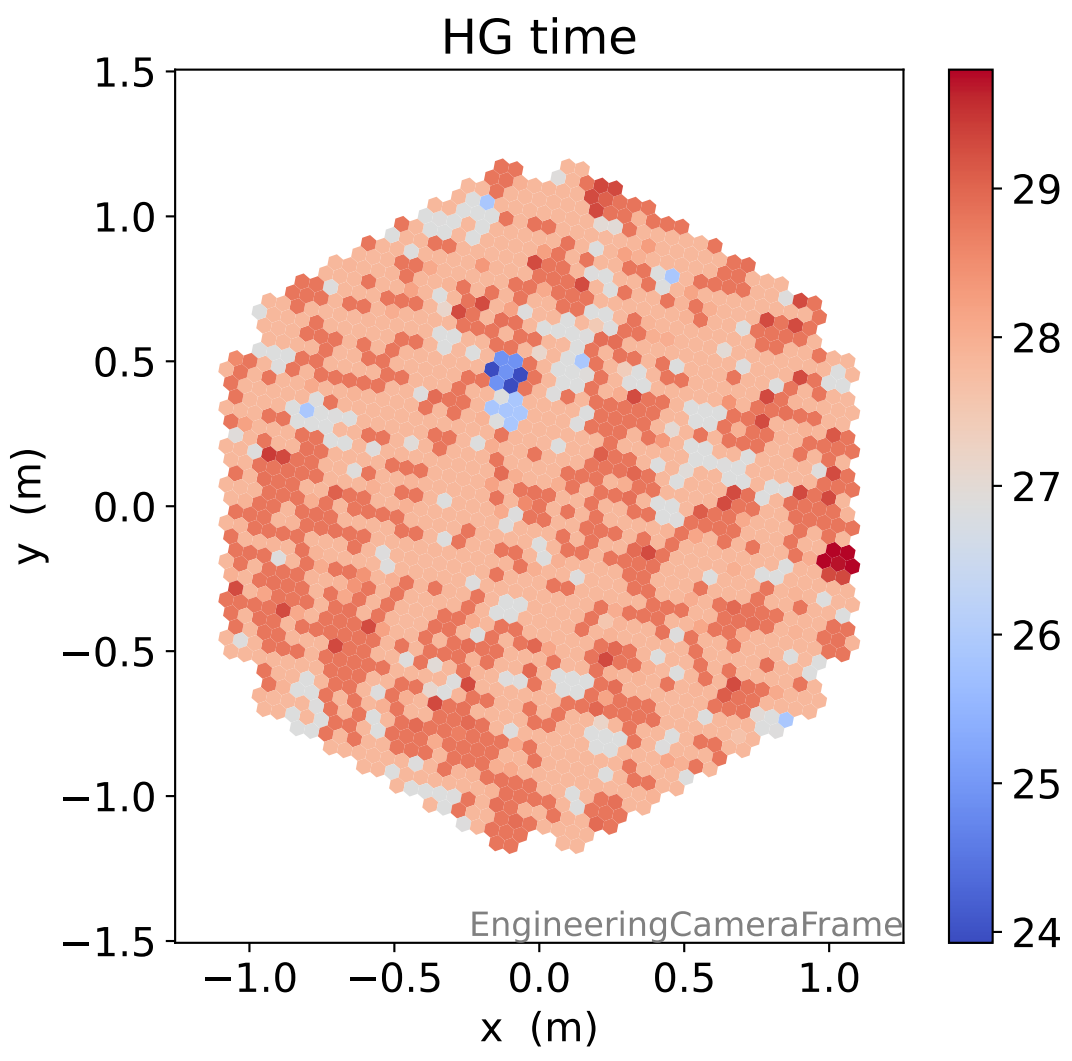
HG pedestal std [ADC]



LG pedestal std [ADC]

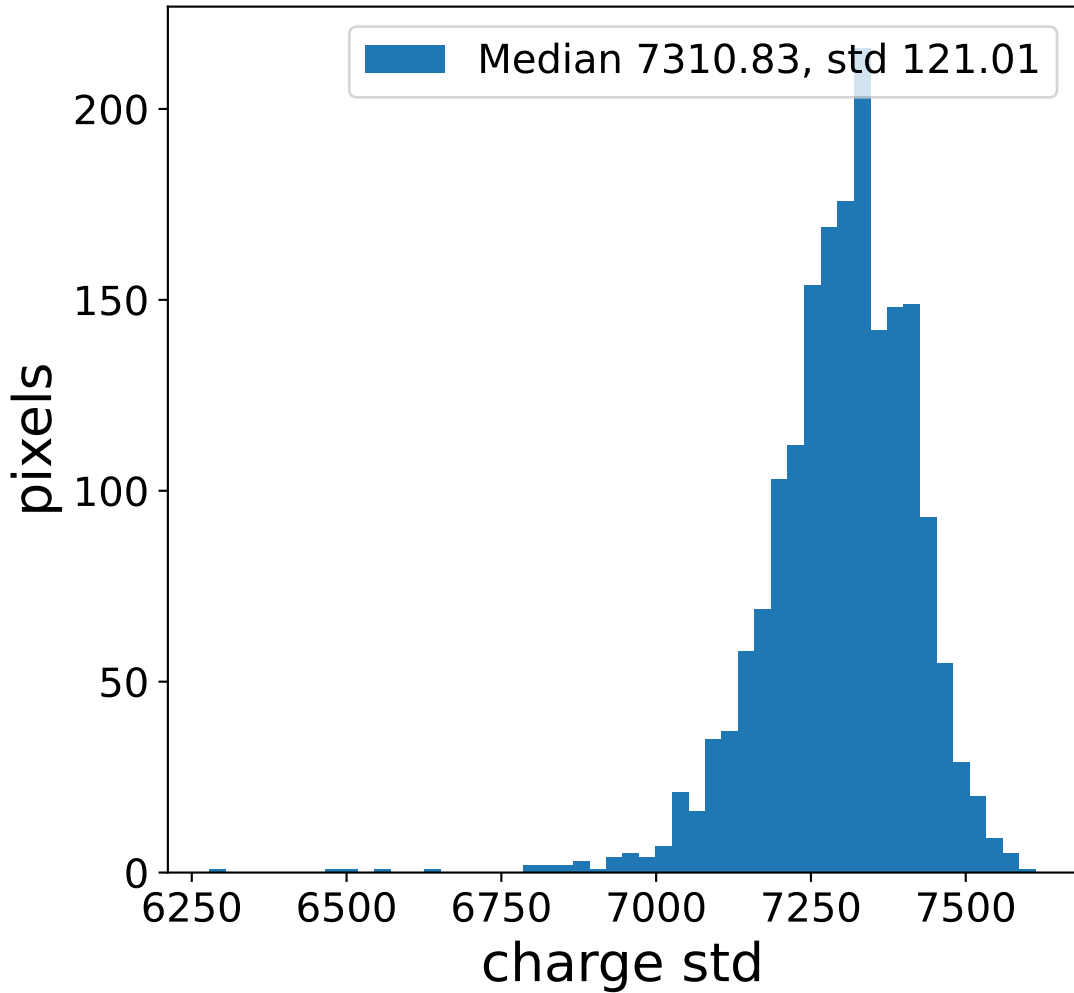
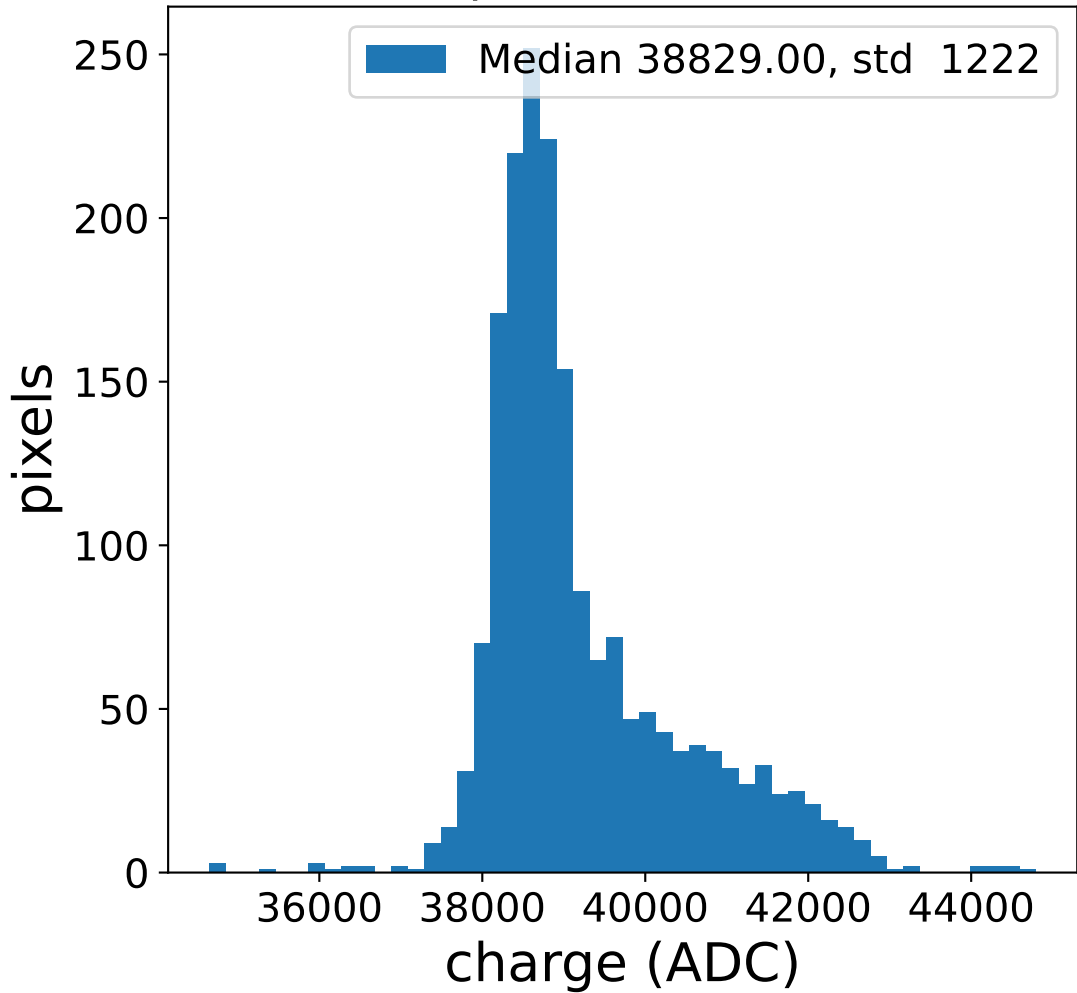


Run 12917

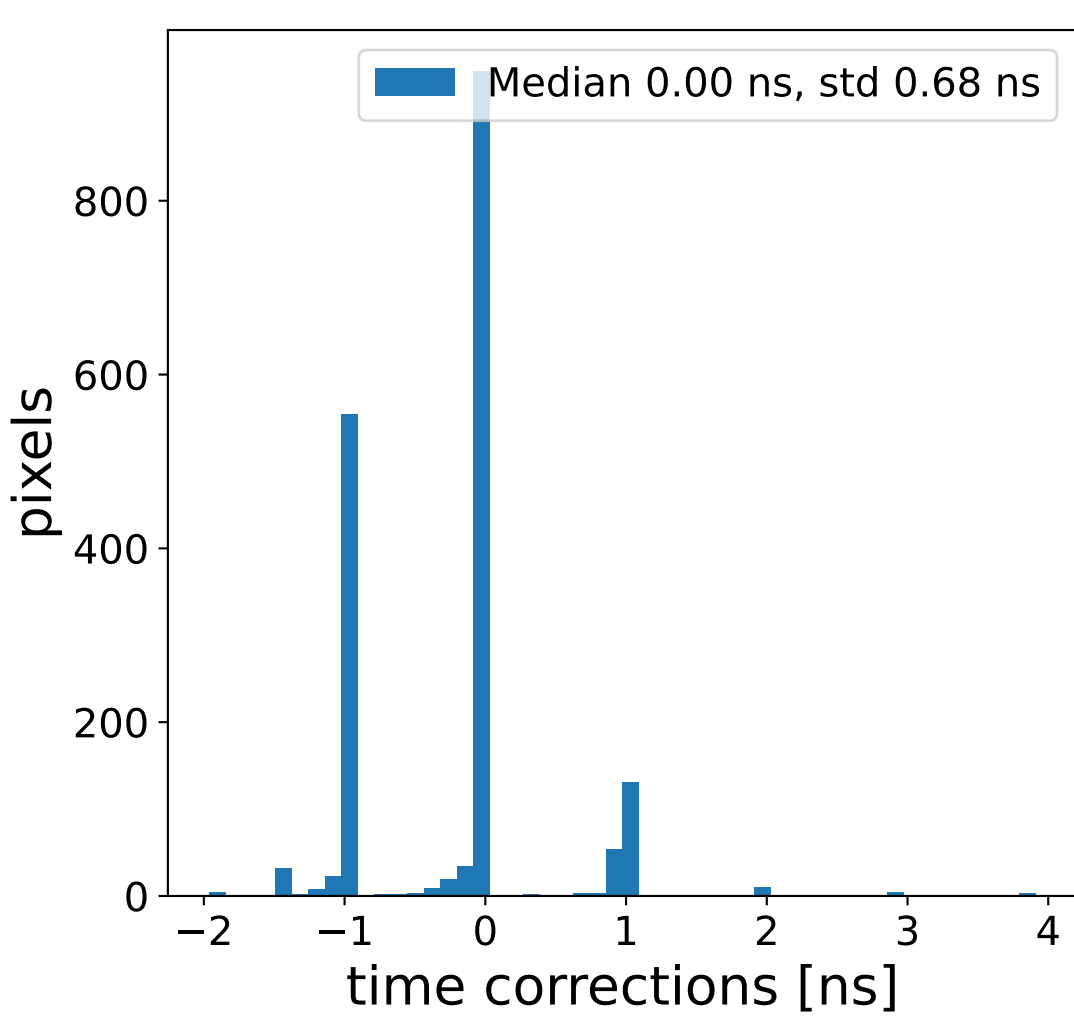
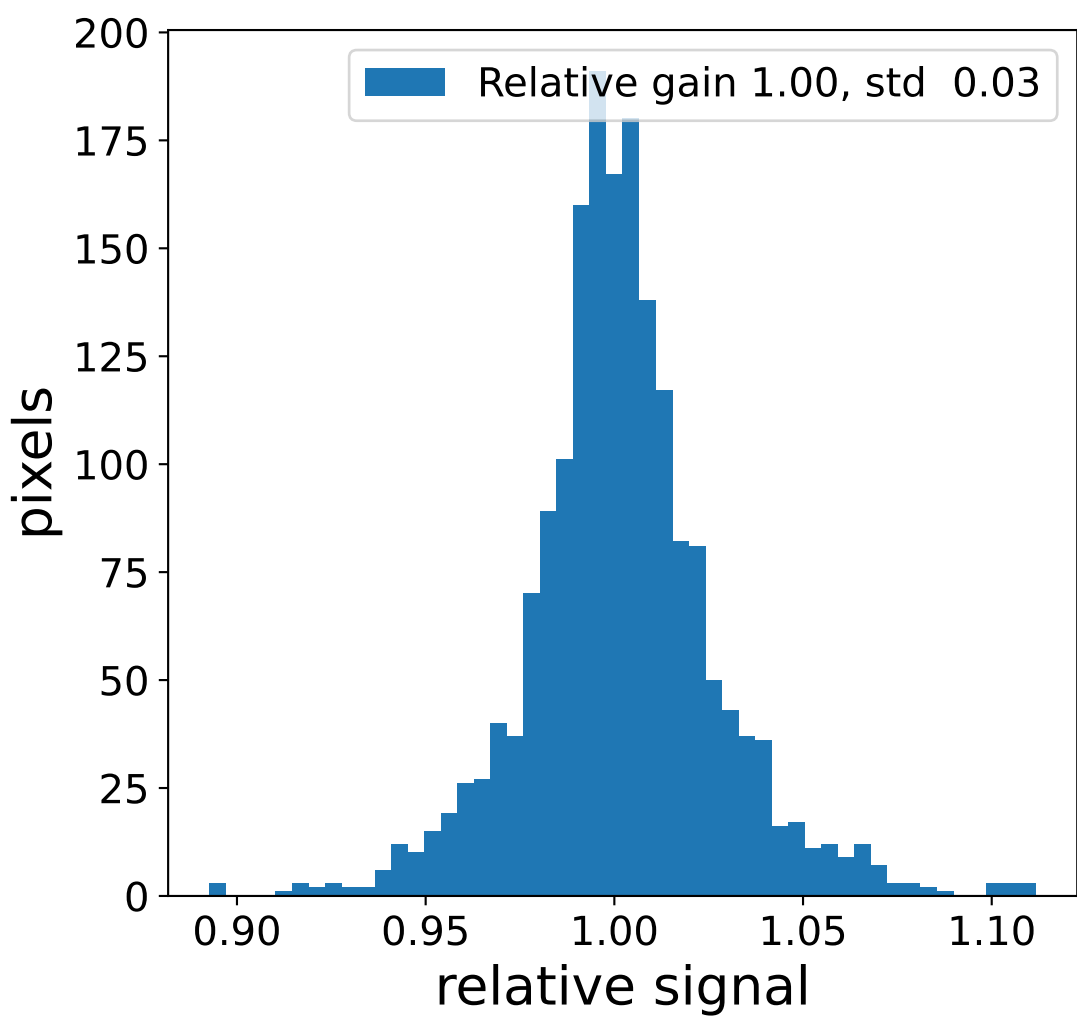
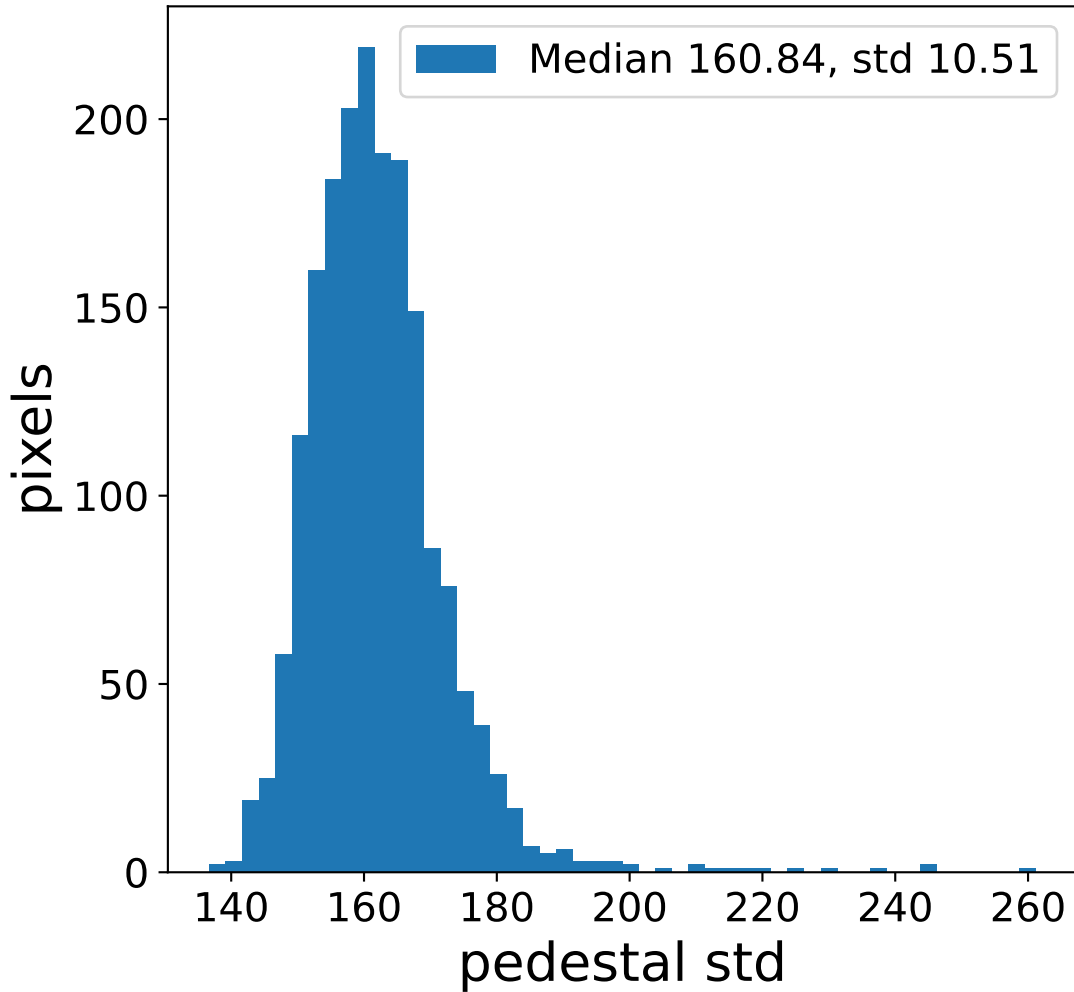
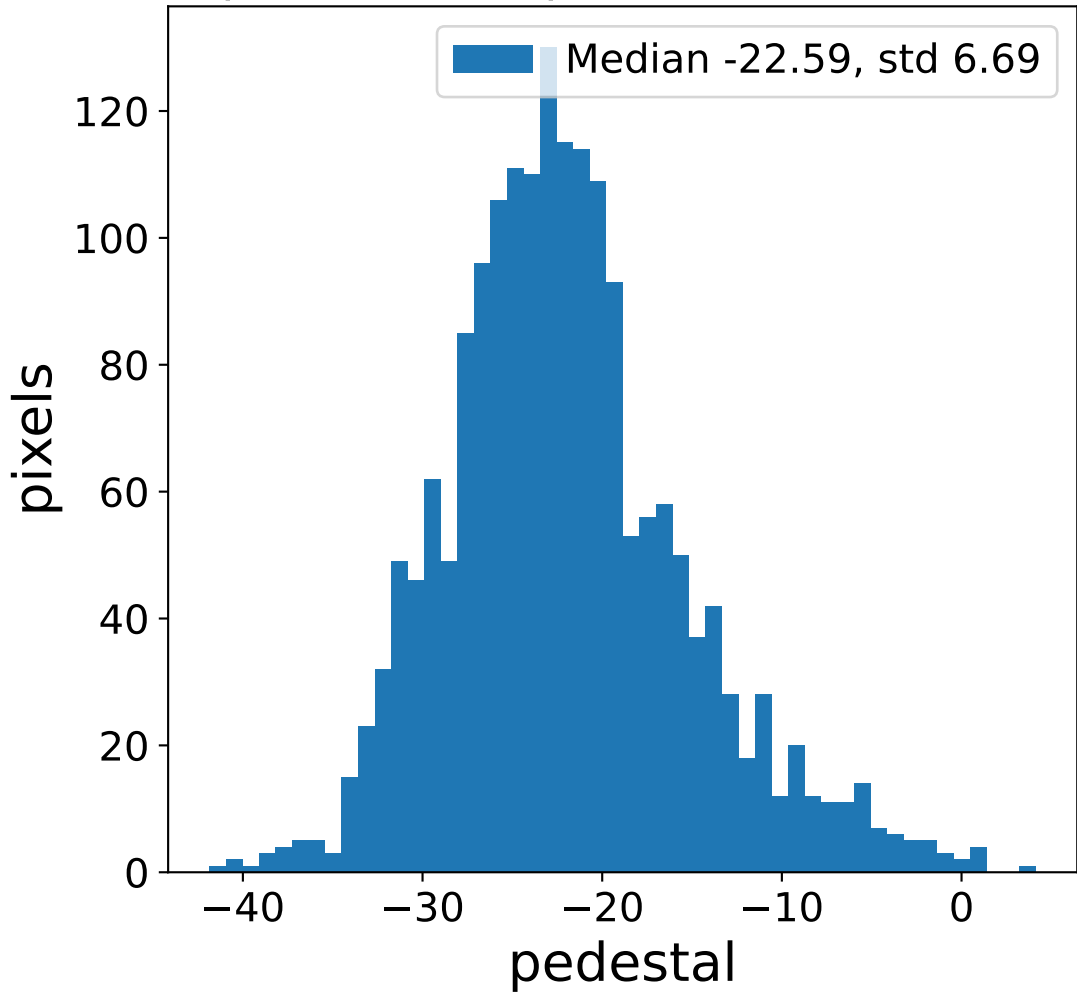


Run 12917 channel: HG

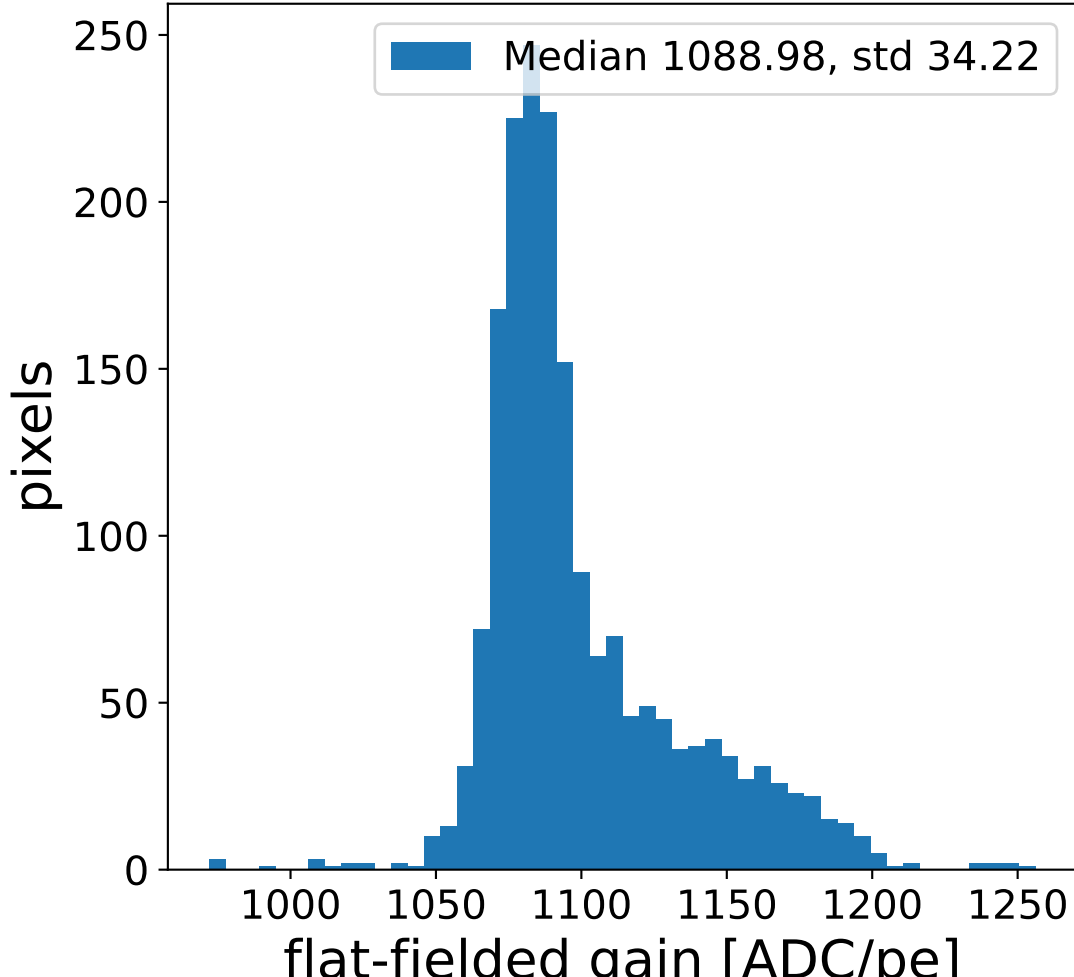
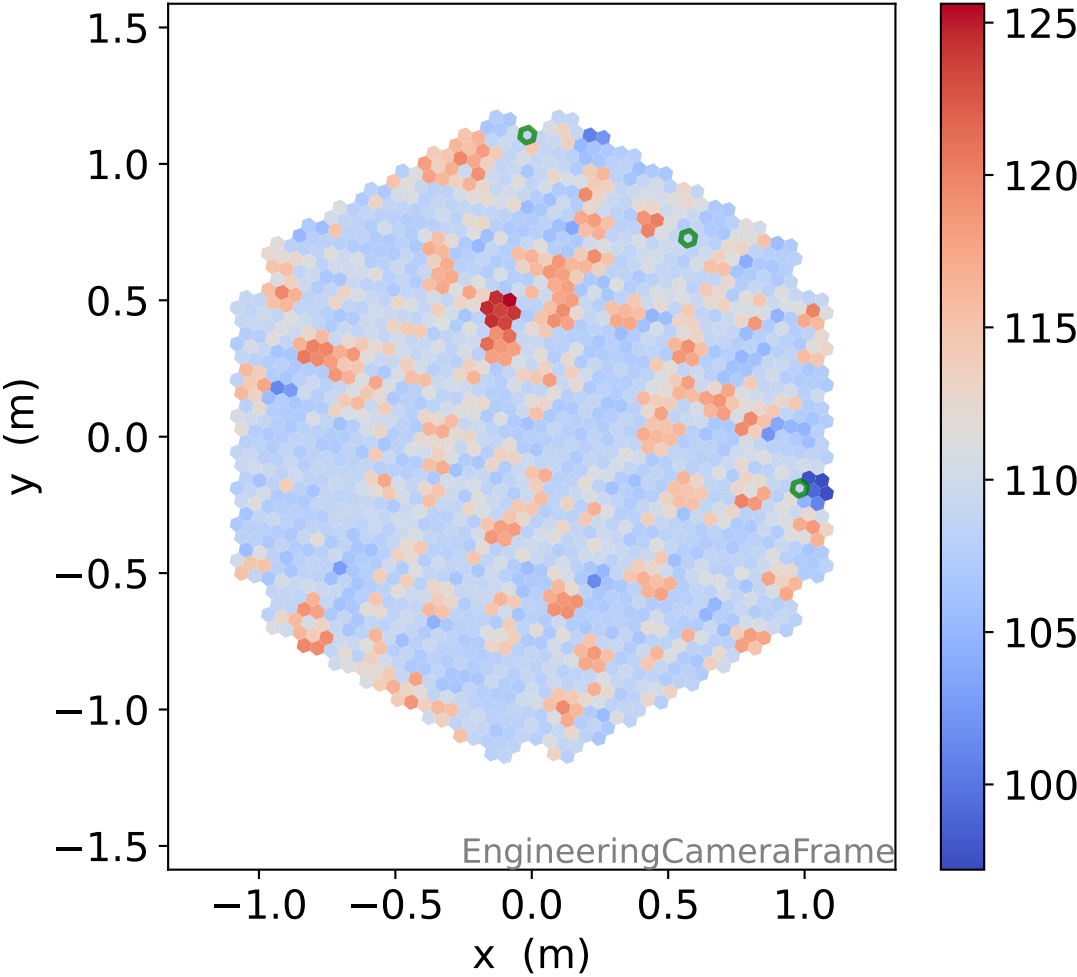
FF sample of 10000 events



pedestal sample of 10000 events

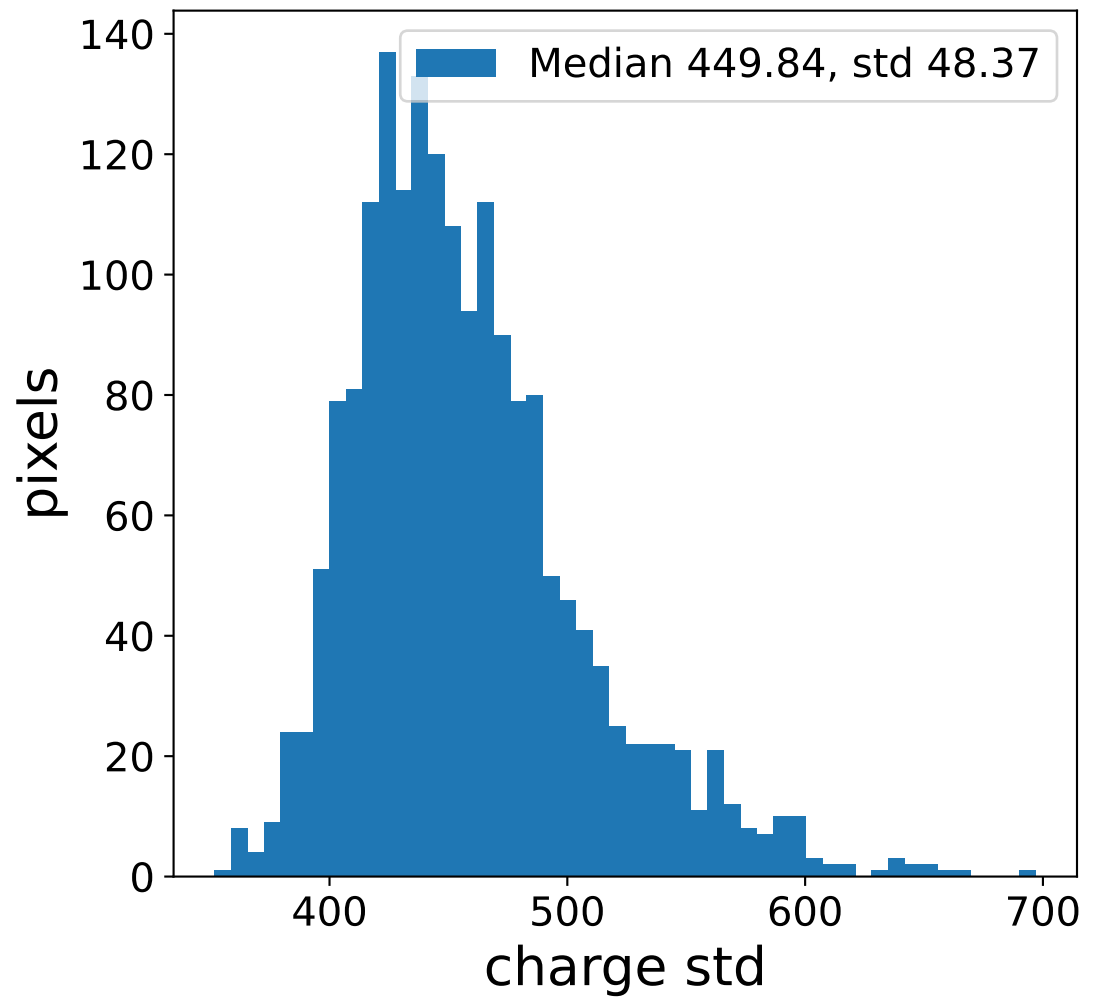
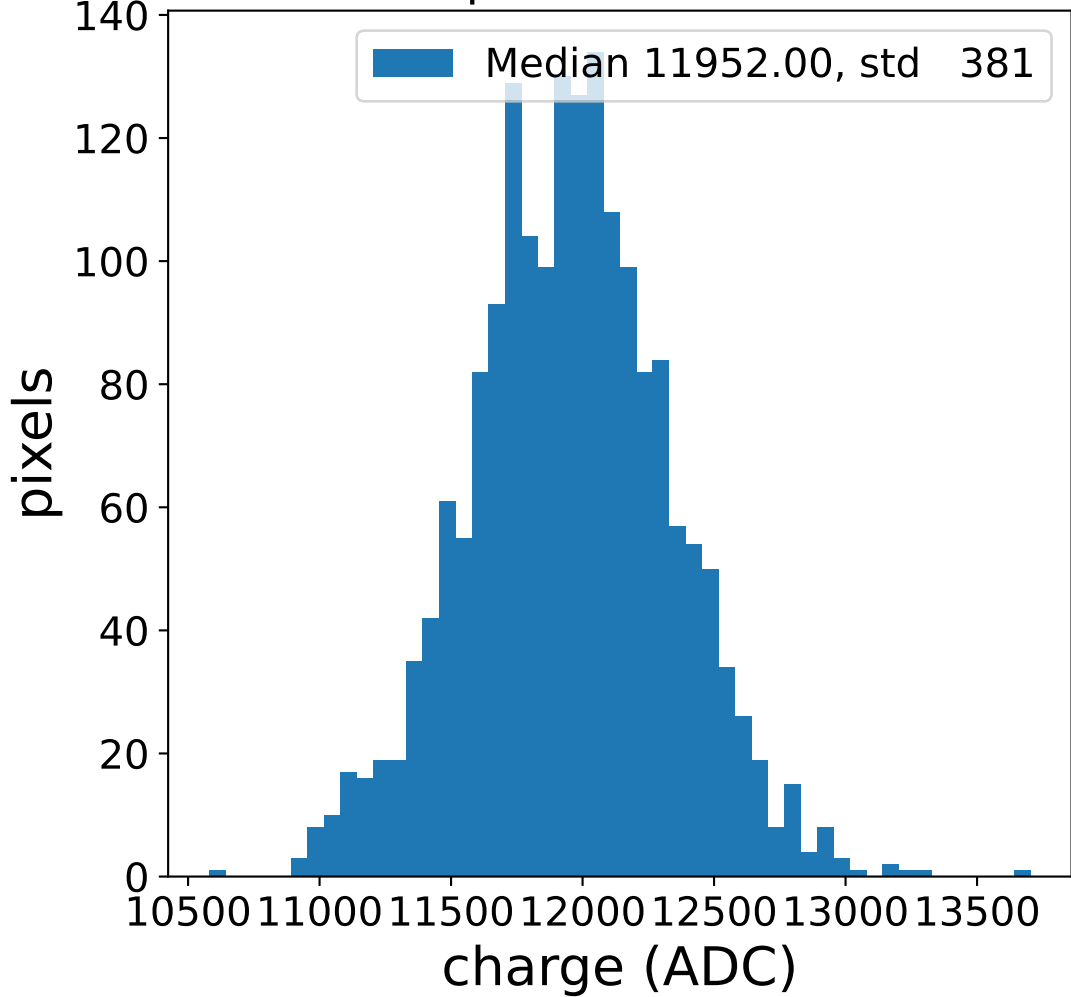


flat-fielded gain [ADC/pe]

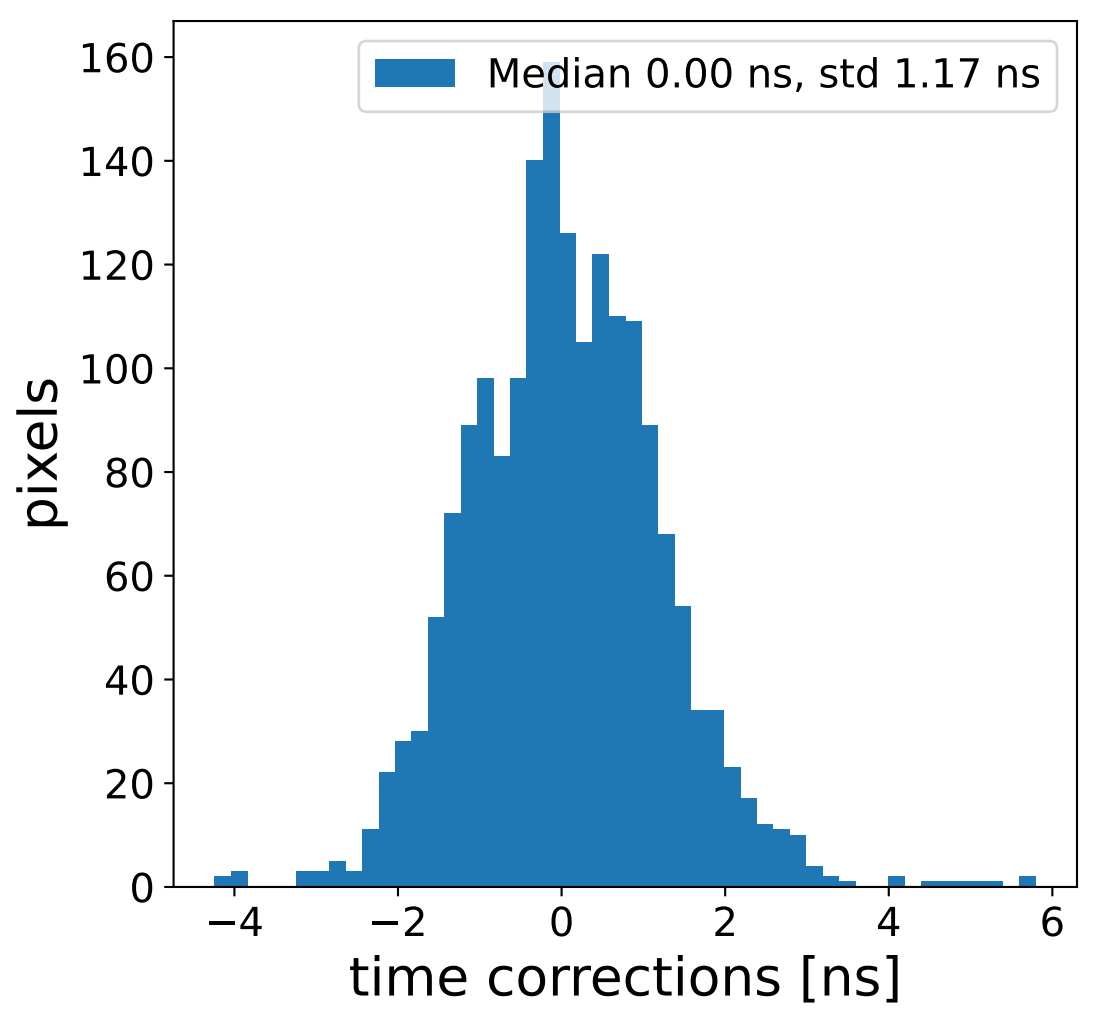
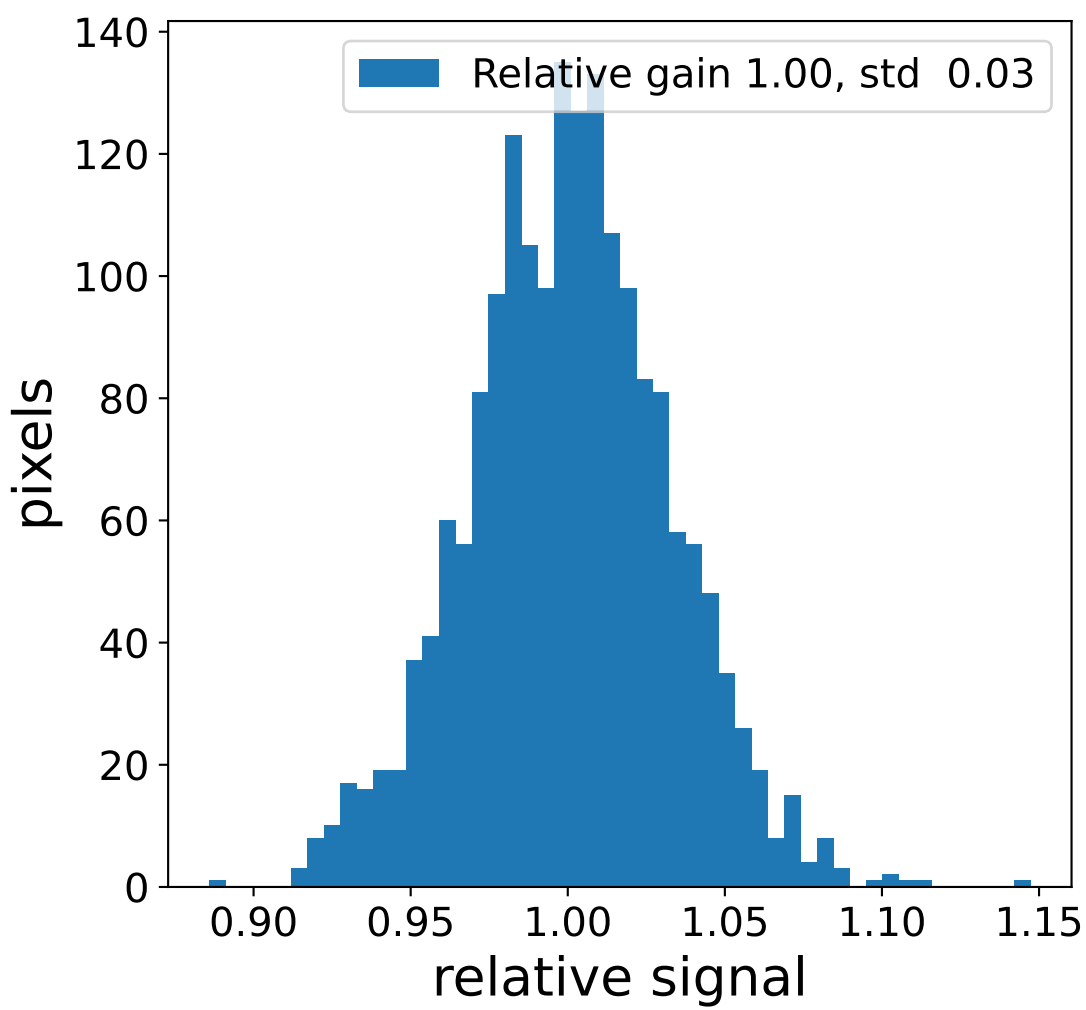
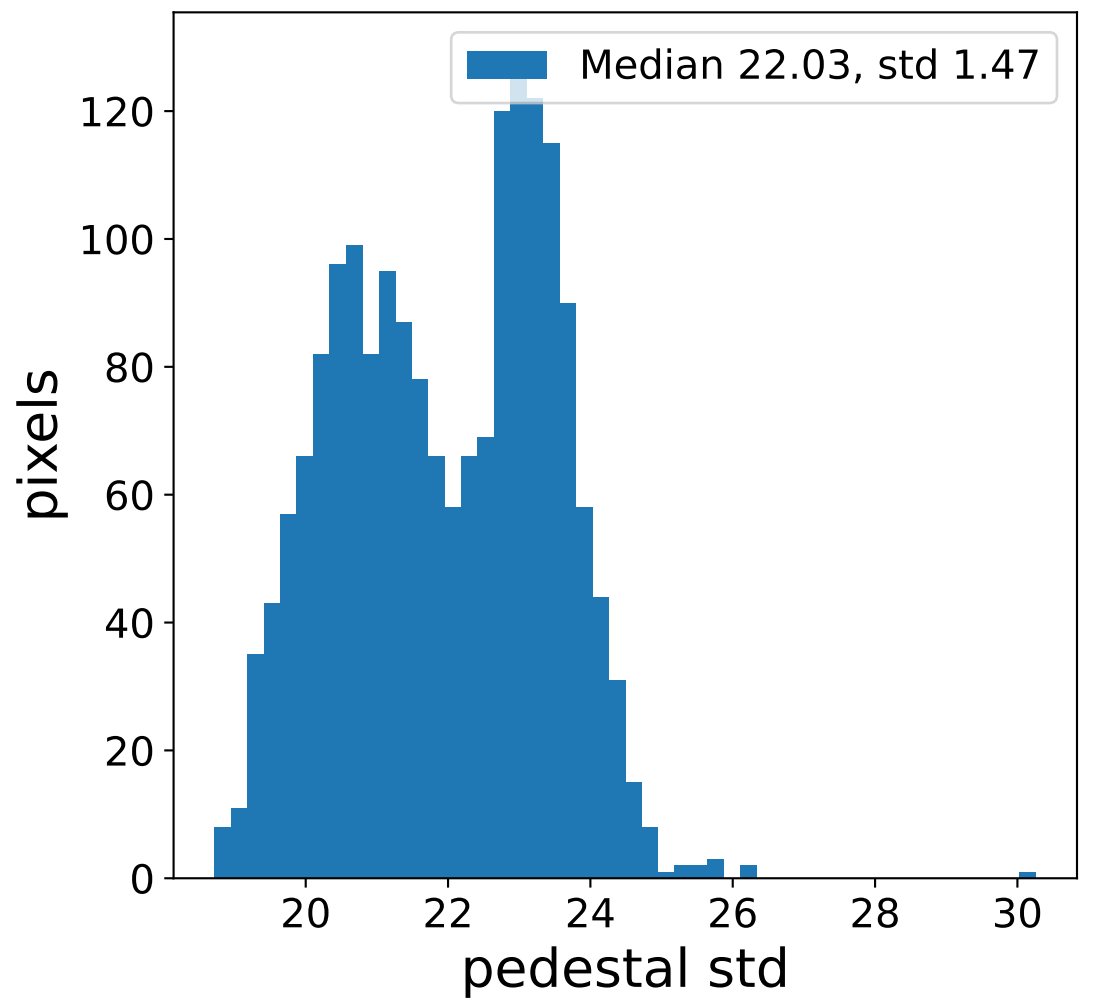
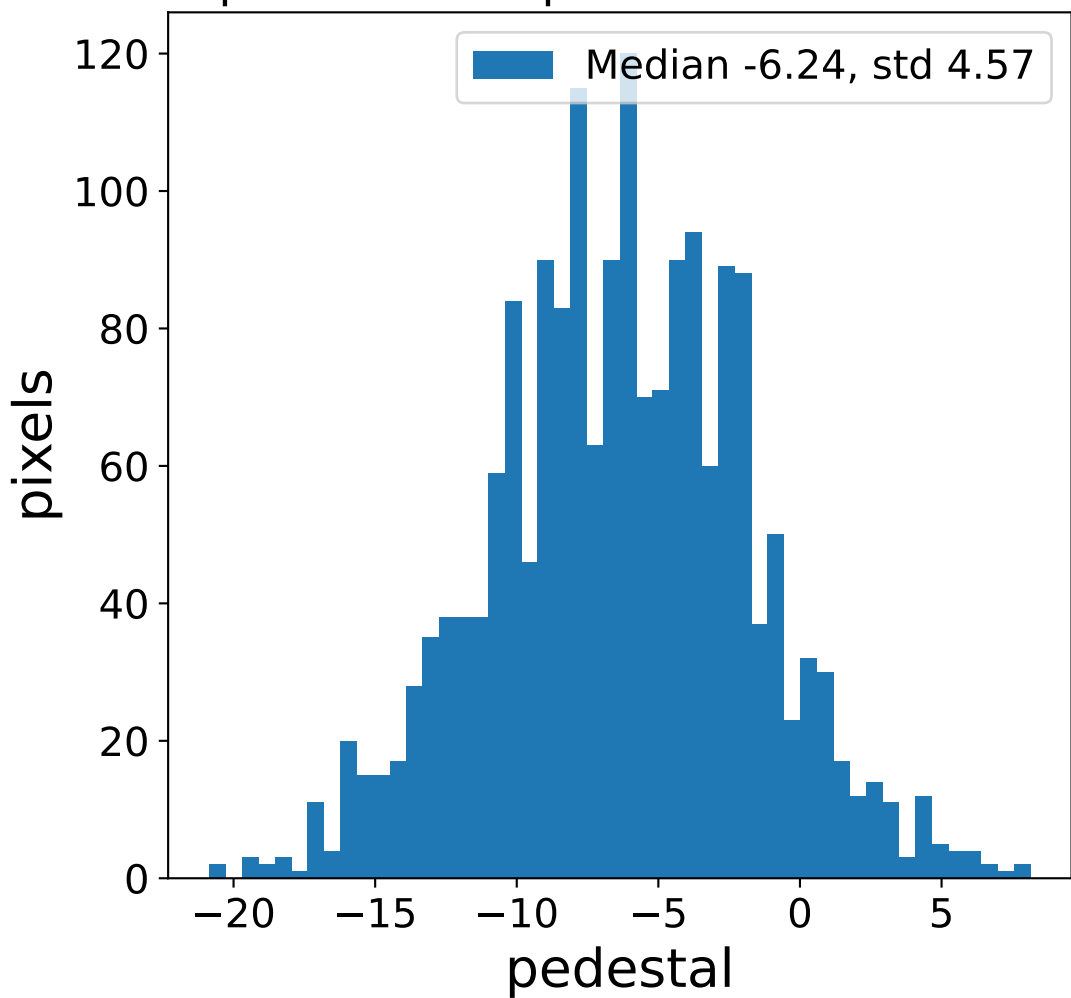


Run 12917 channel: LG

FF sample of 10000 events



pedestal sample of 10000 events



flat-fielded gain [ADC/pe]

