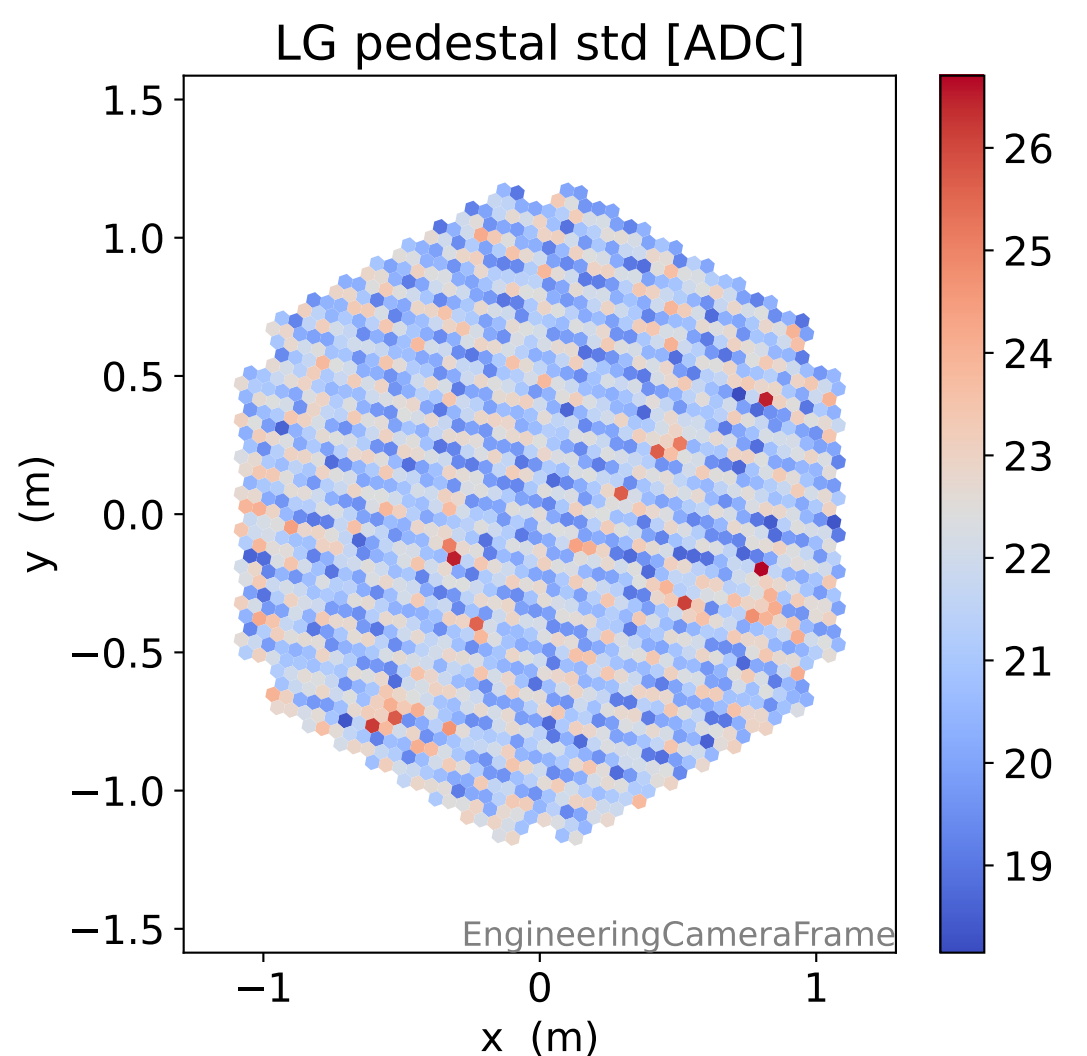
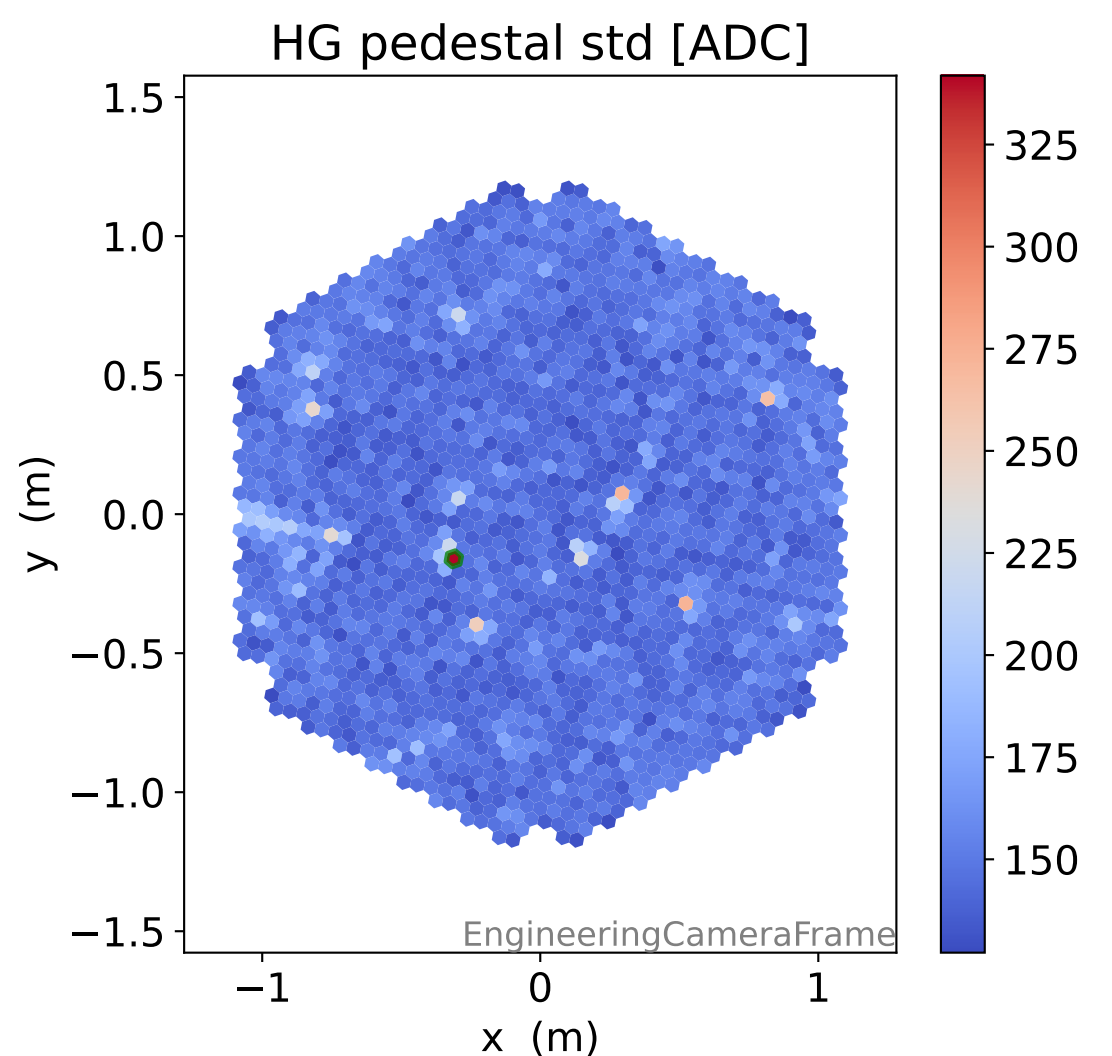
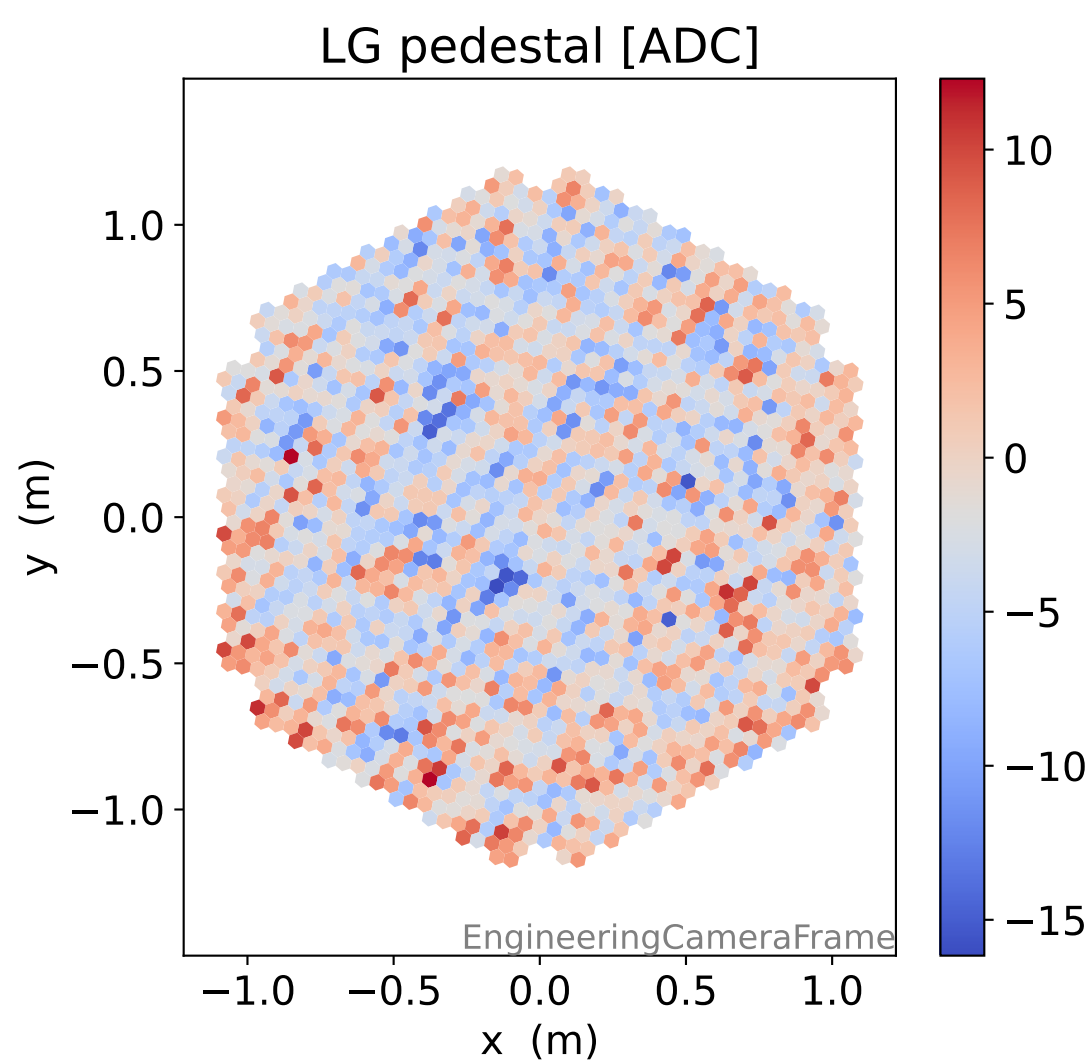
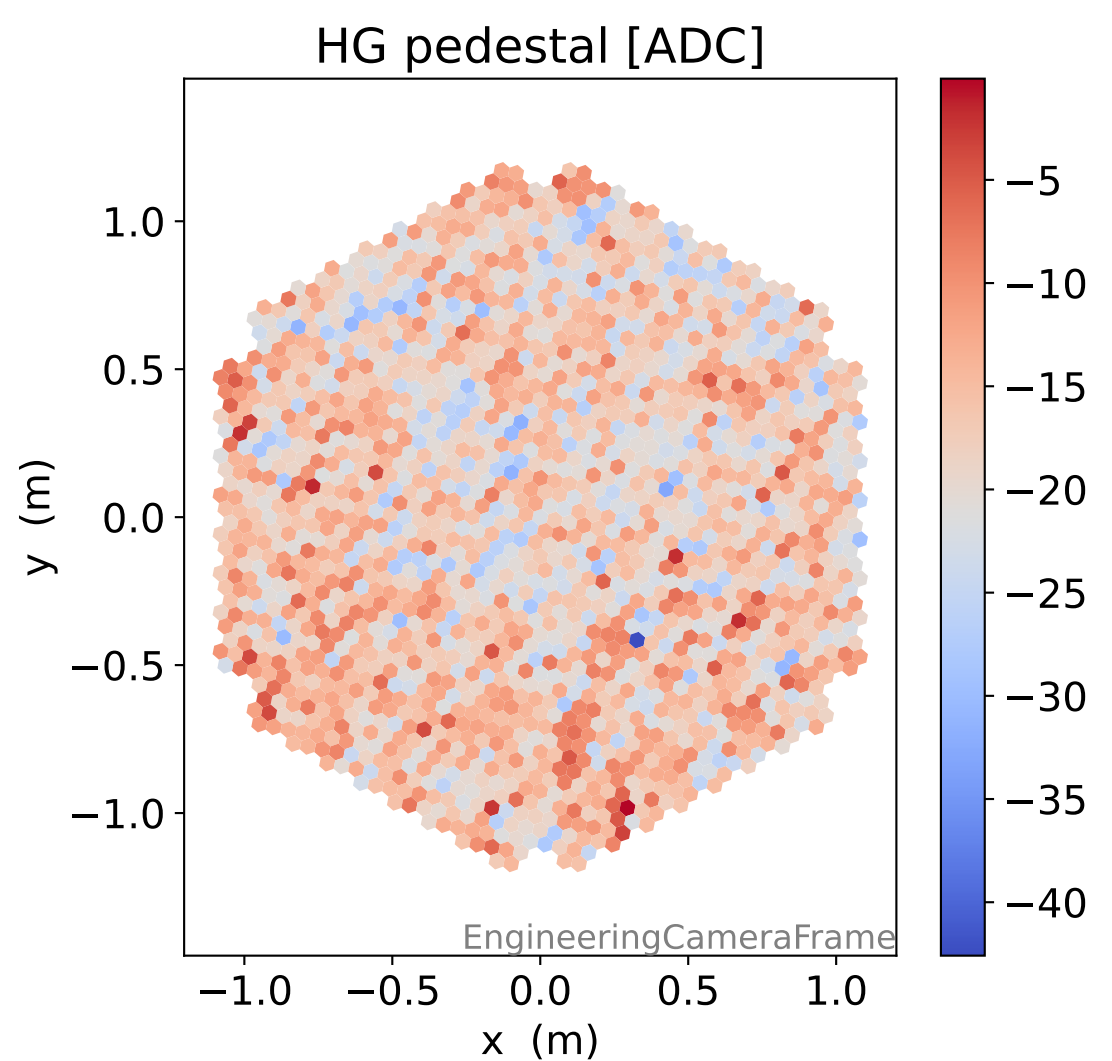
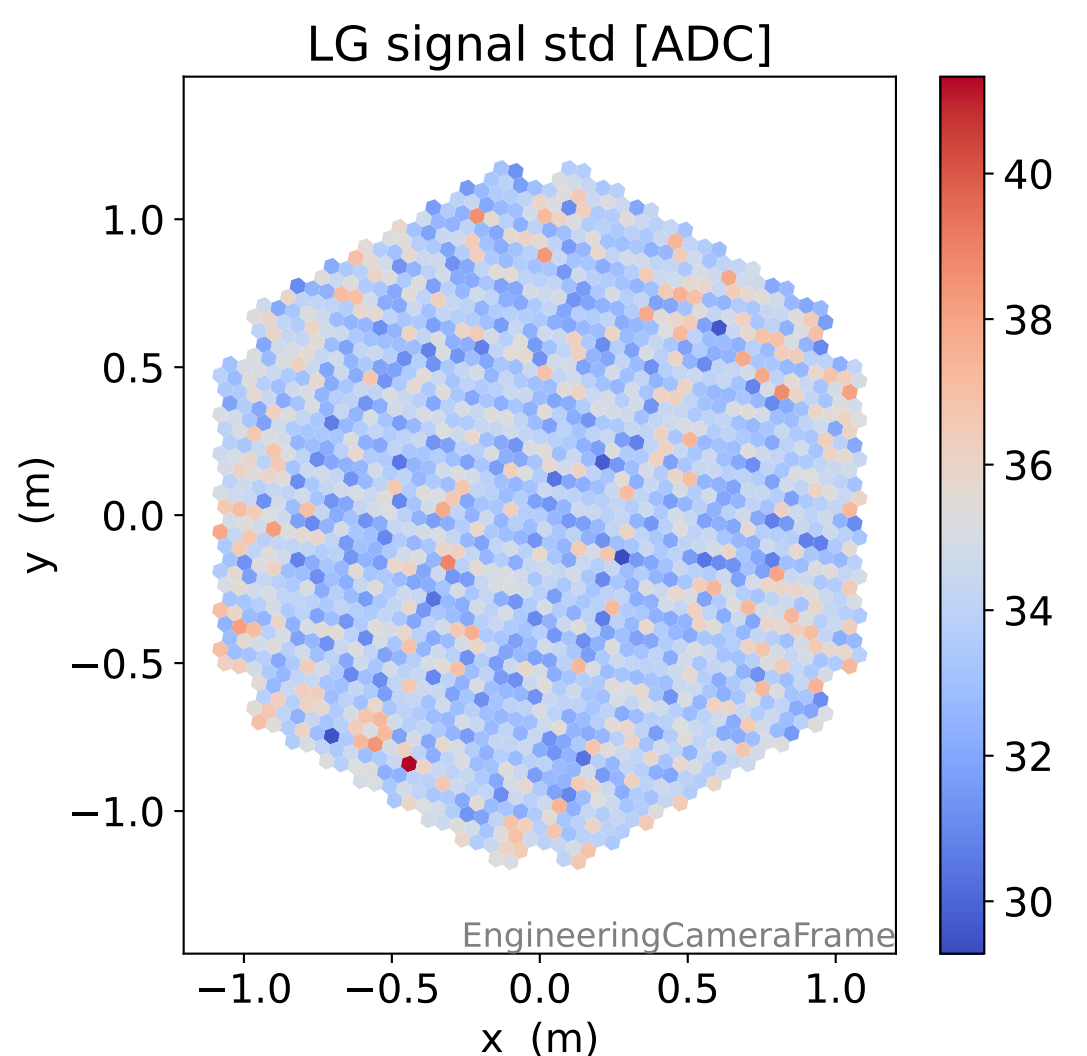
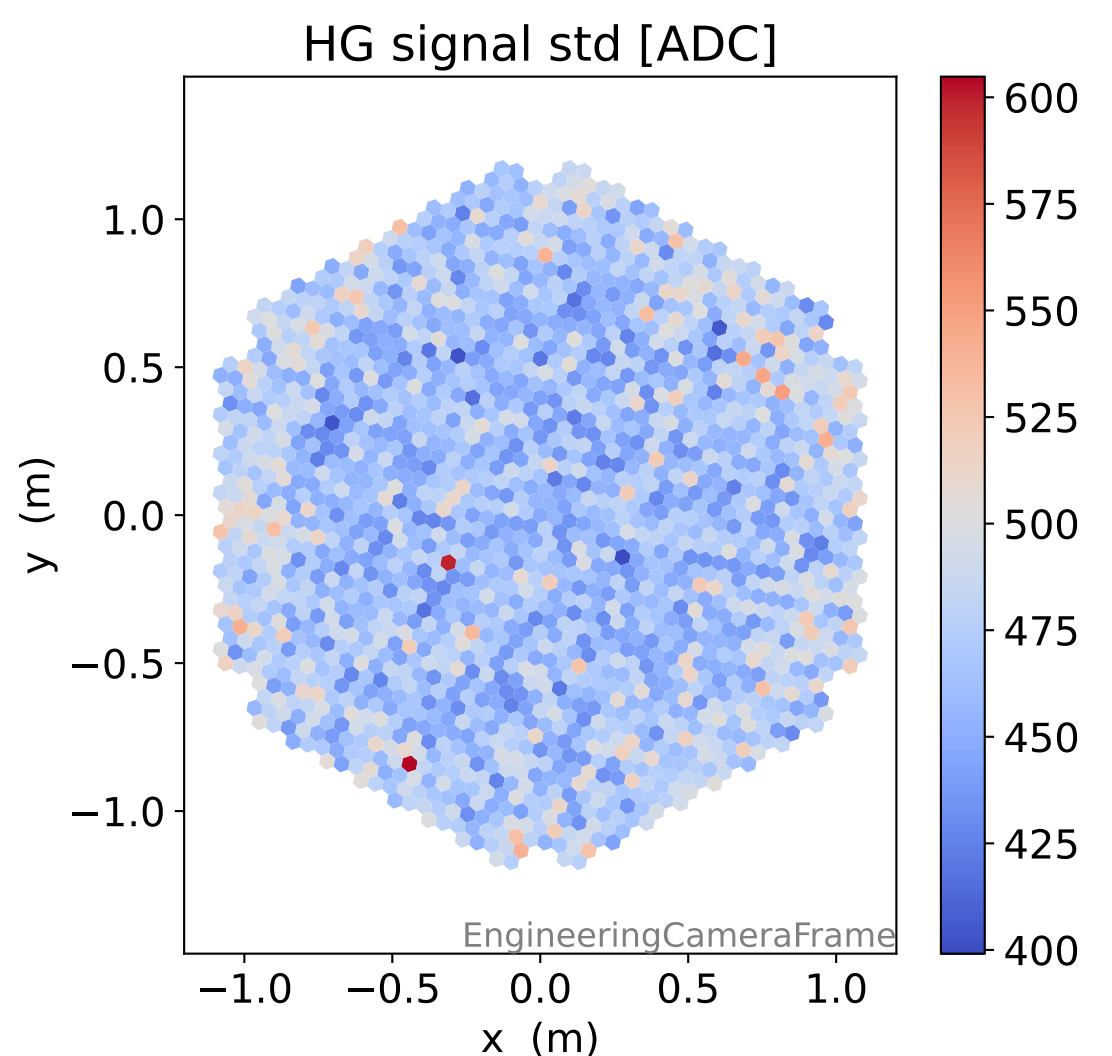
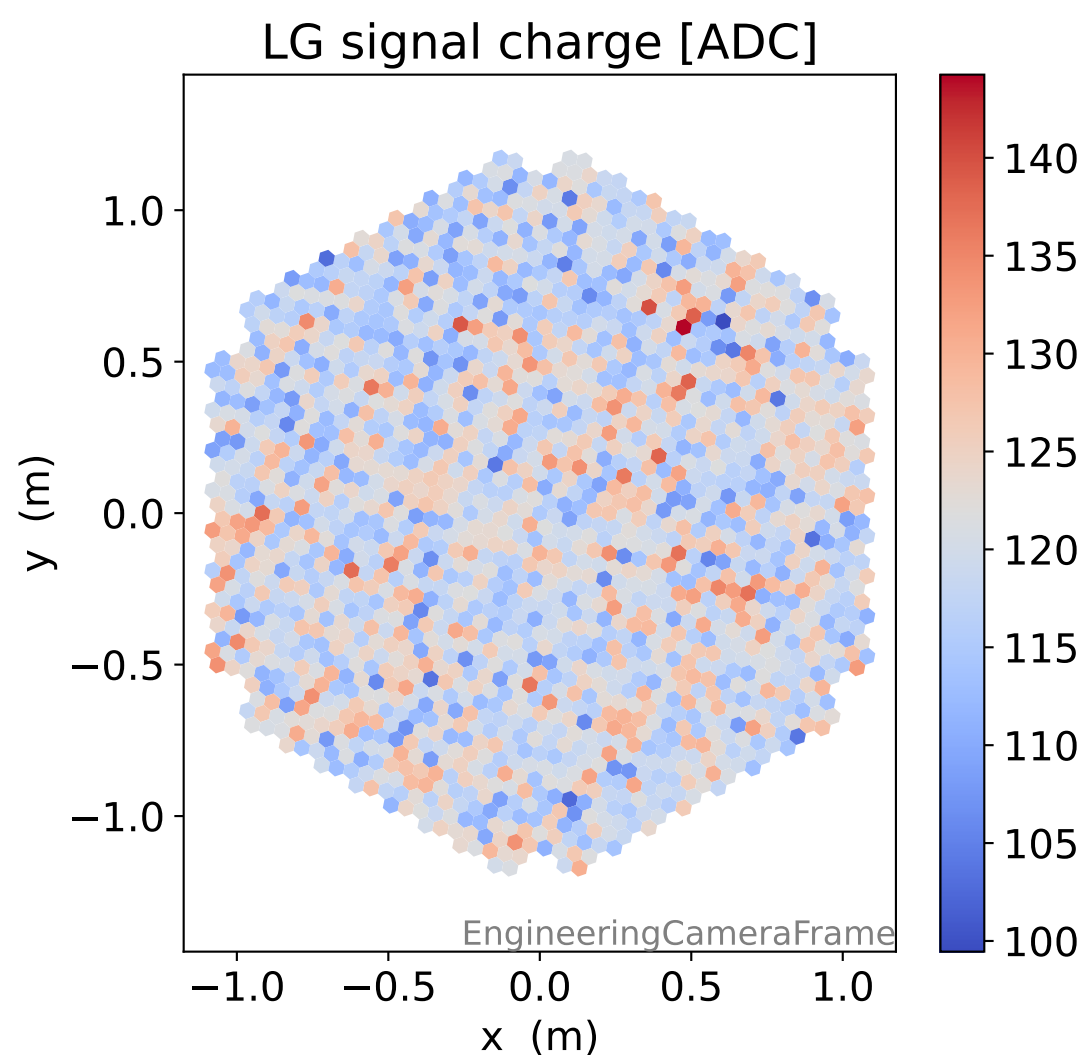
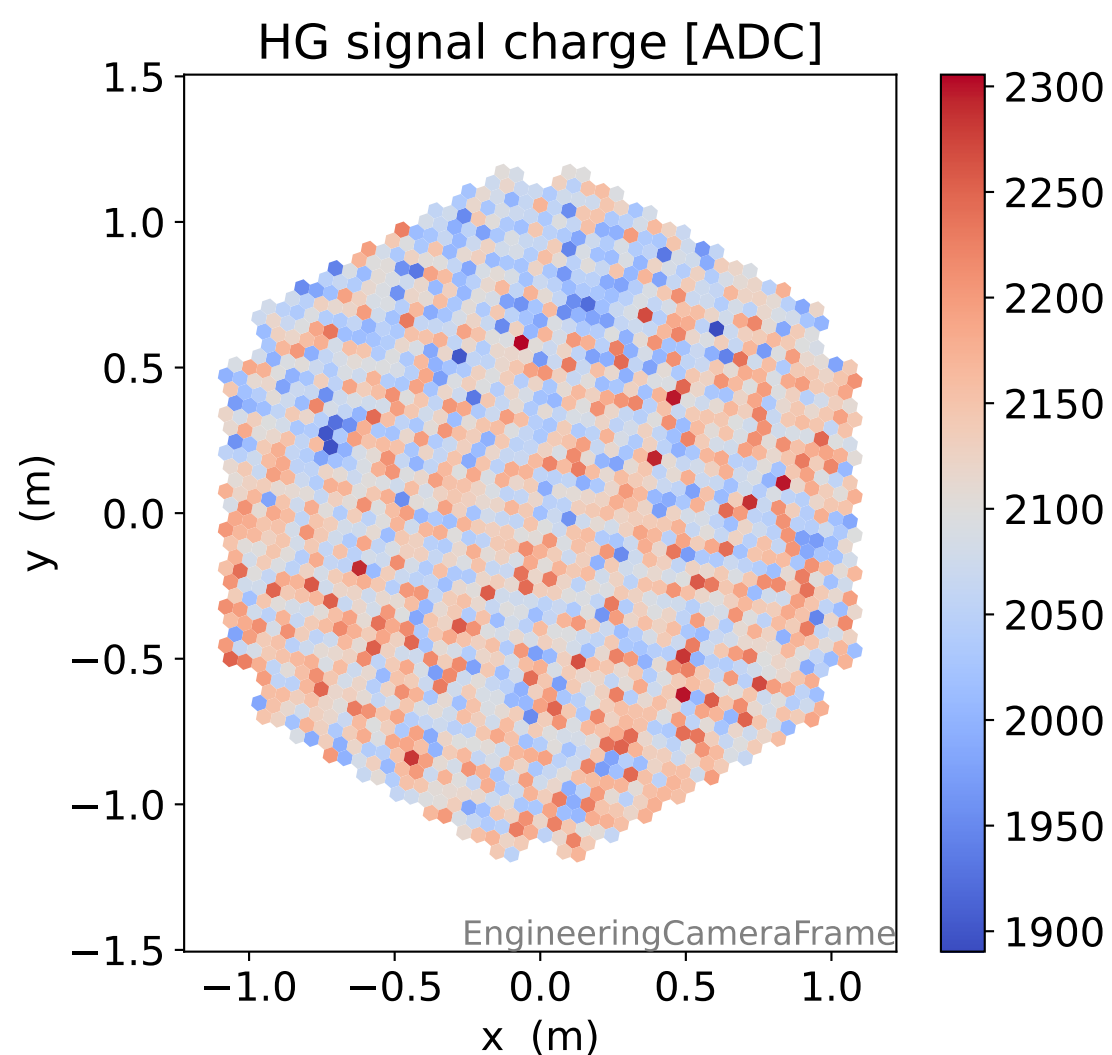
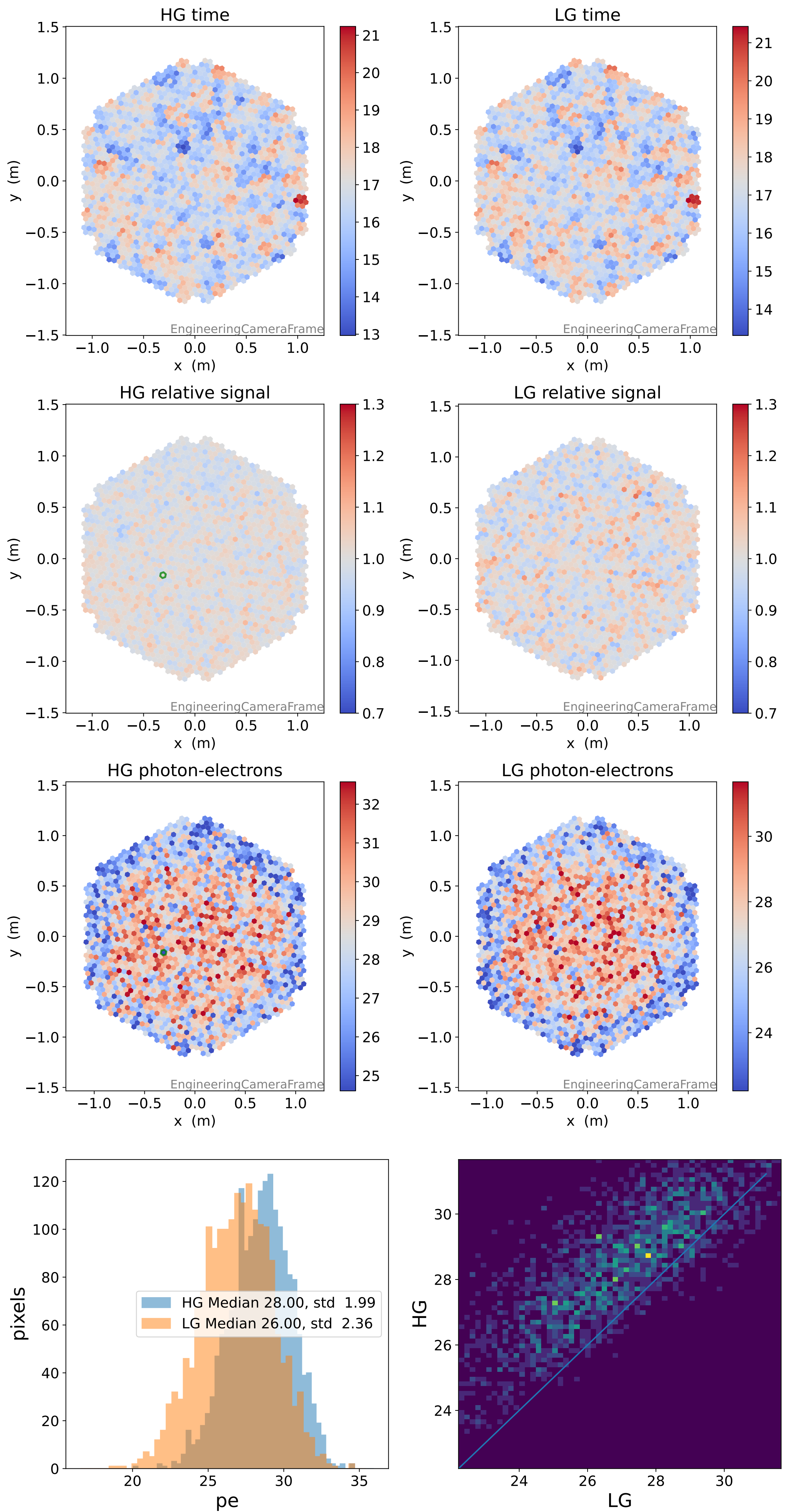


# Run 12554

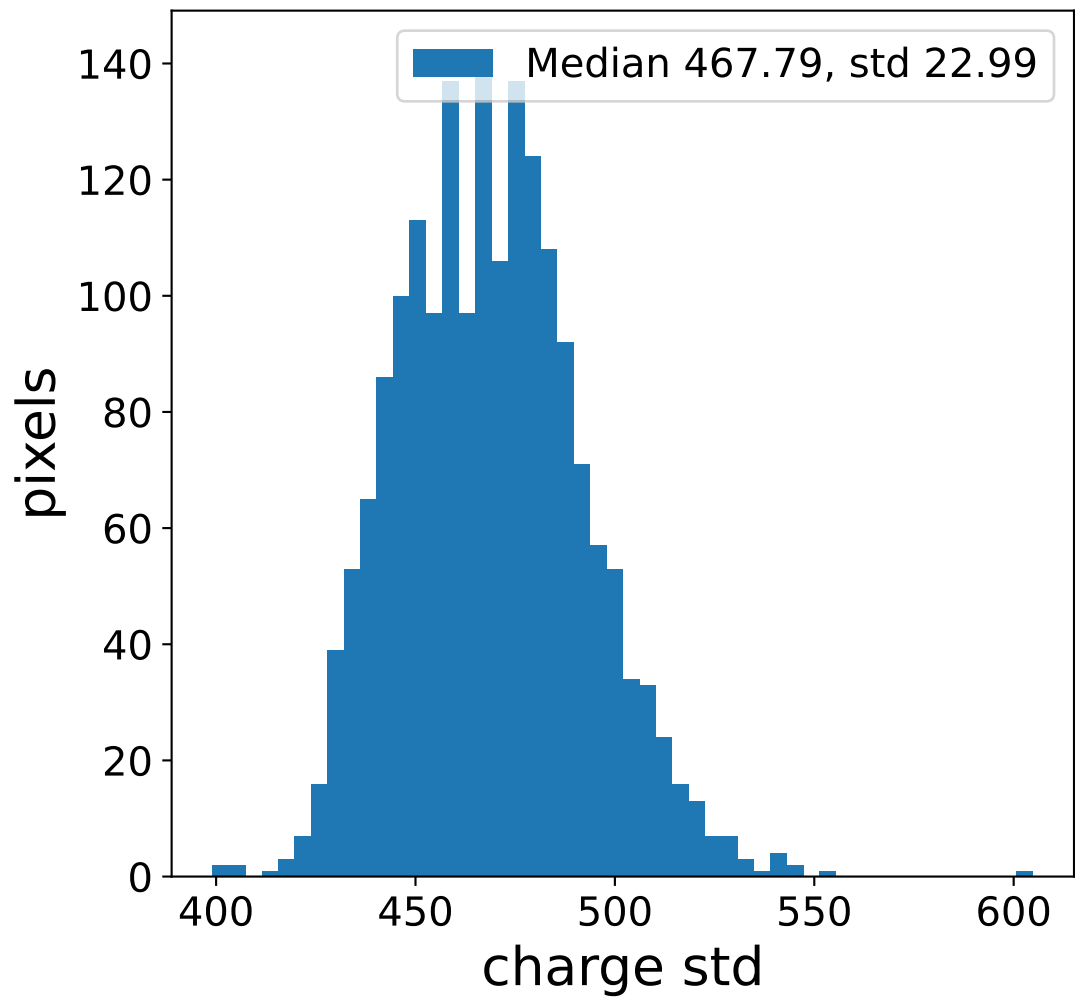
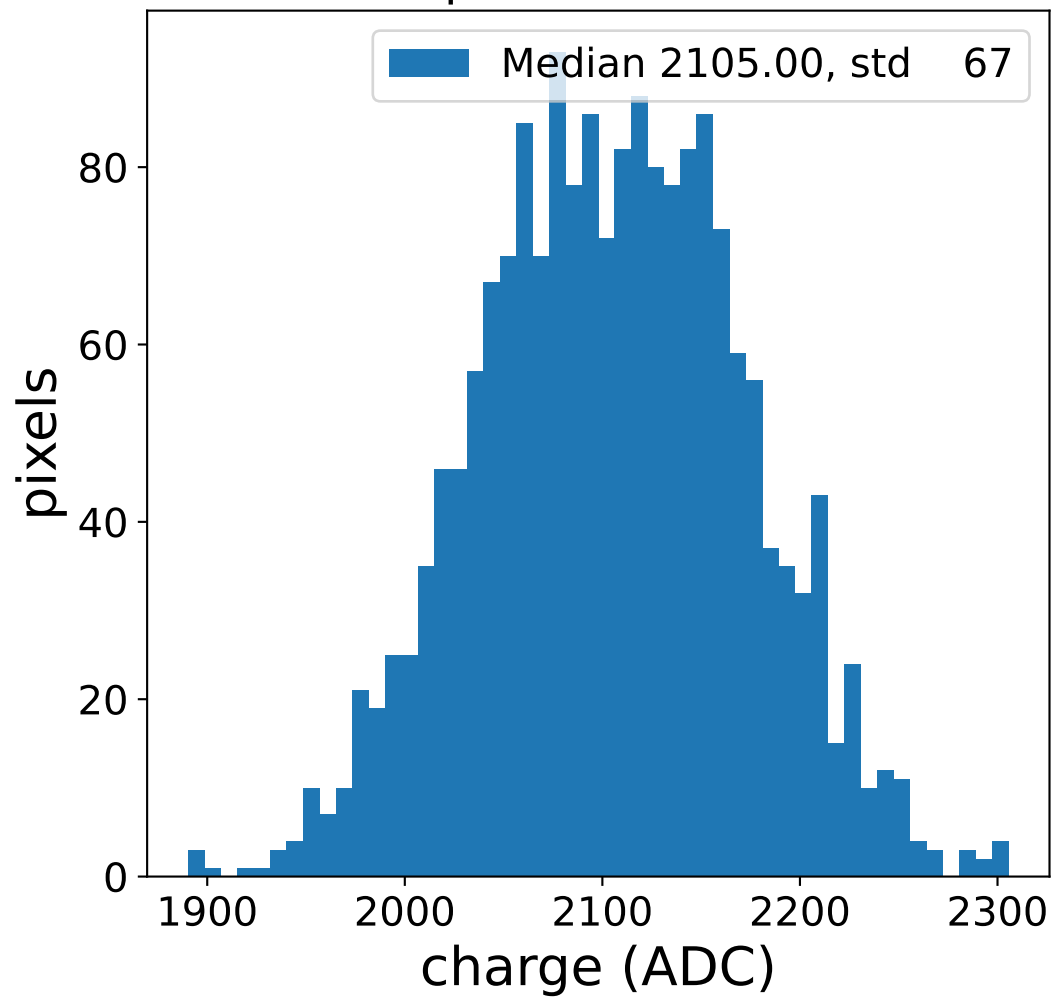


# Run 12554

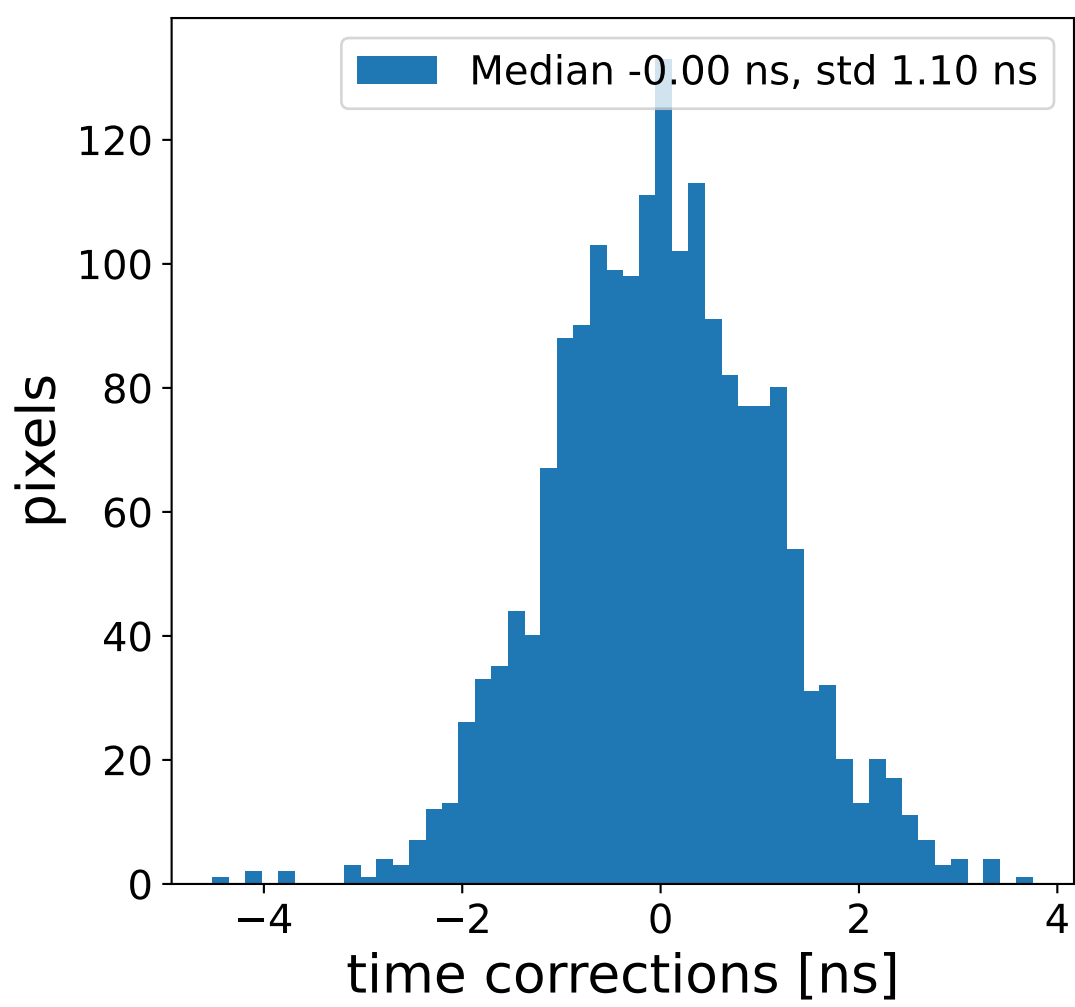
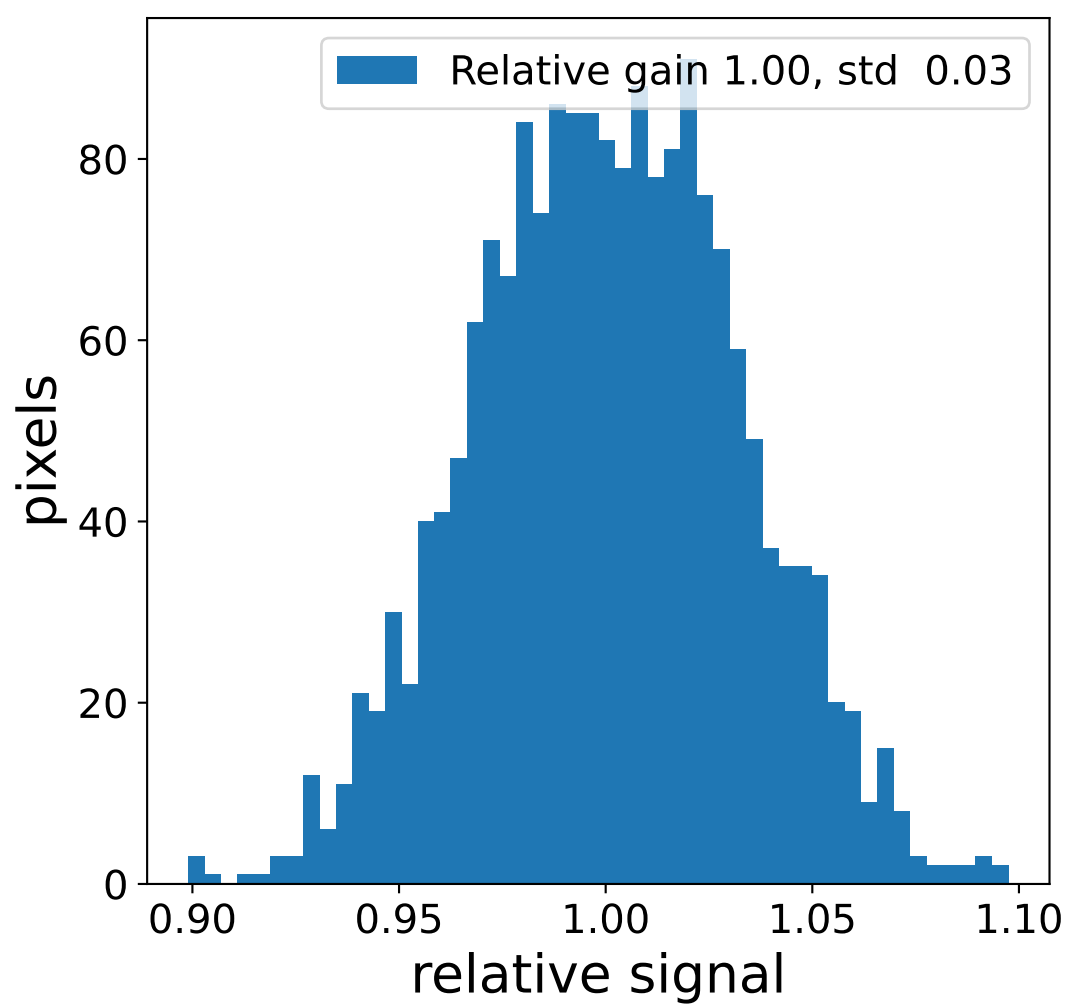
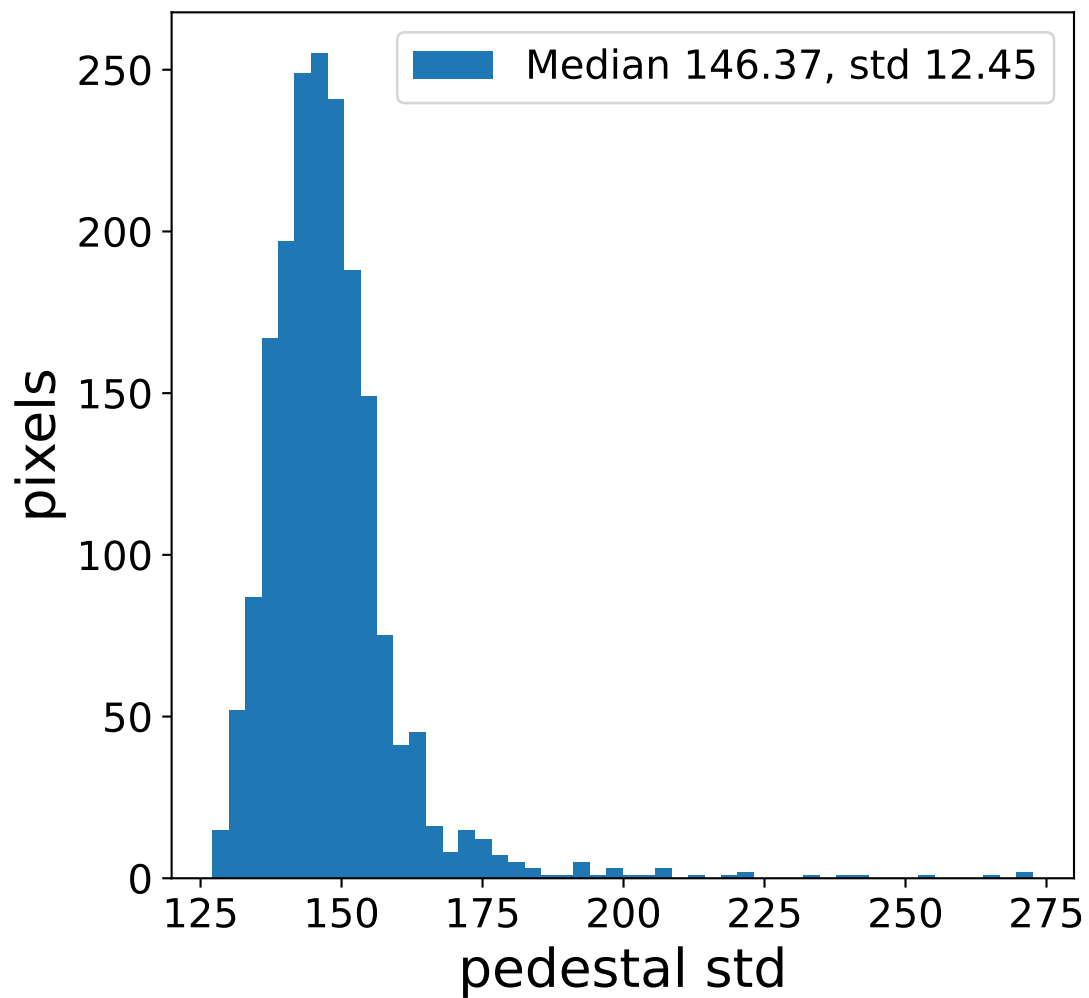
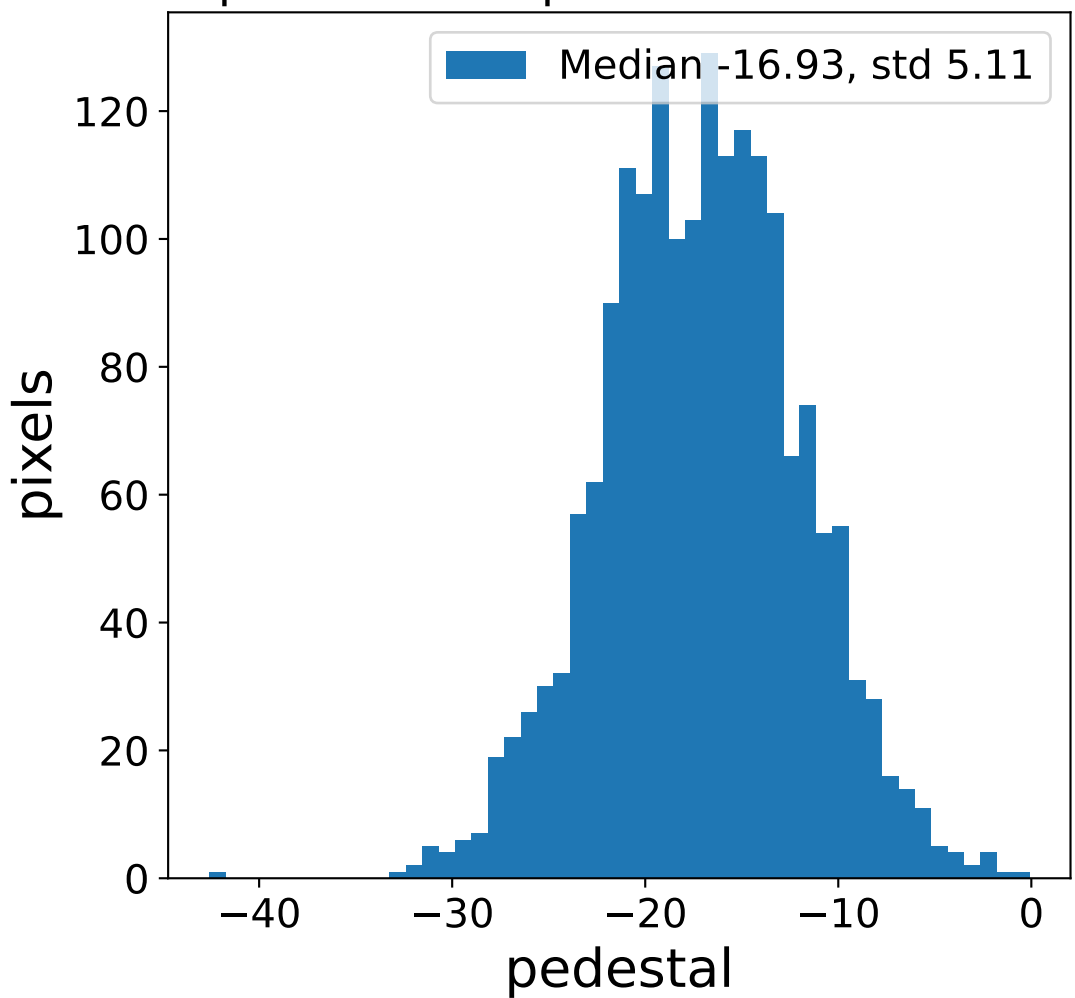


# Run 12554 channel: HG

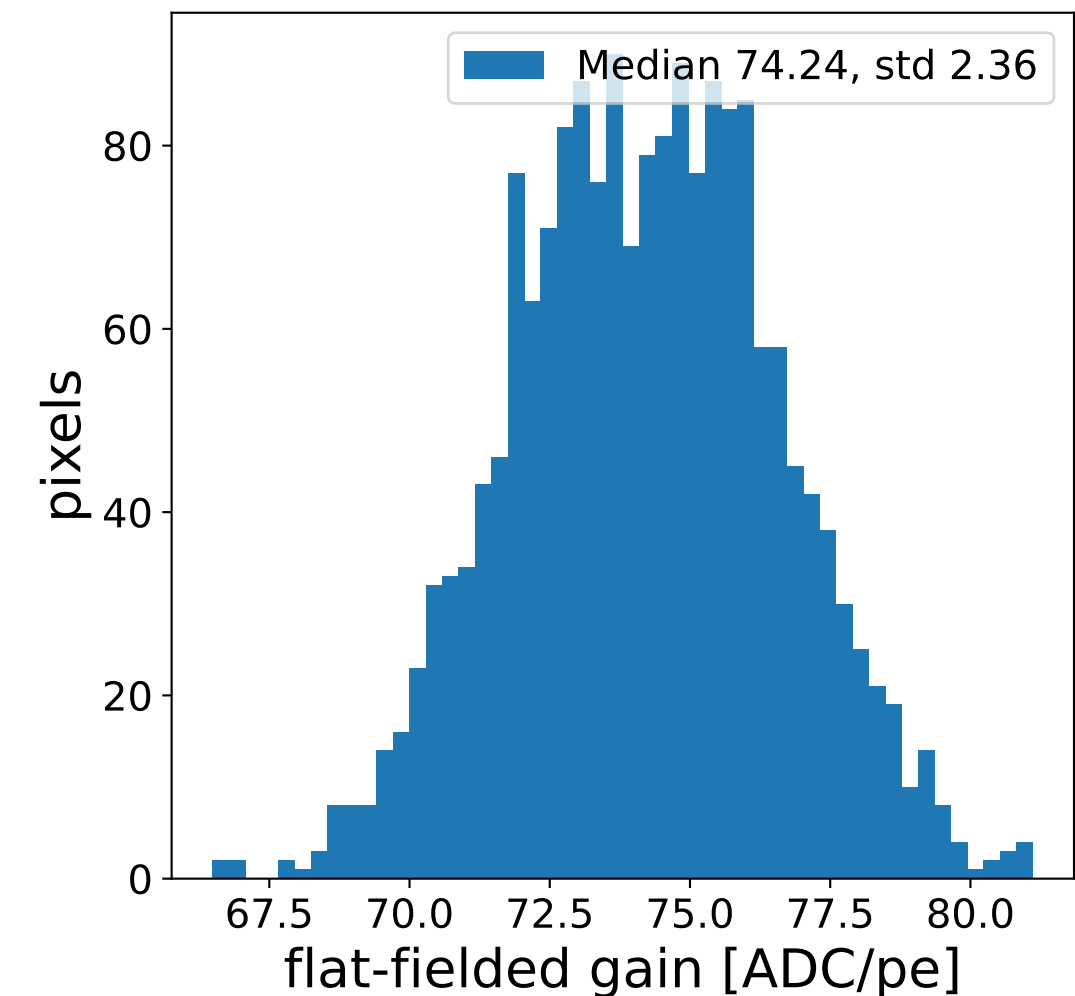
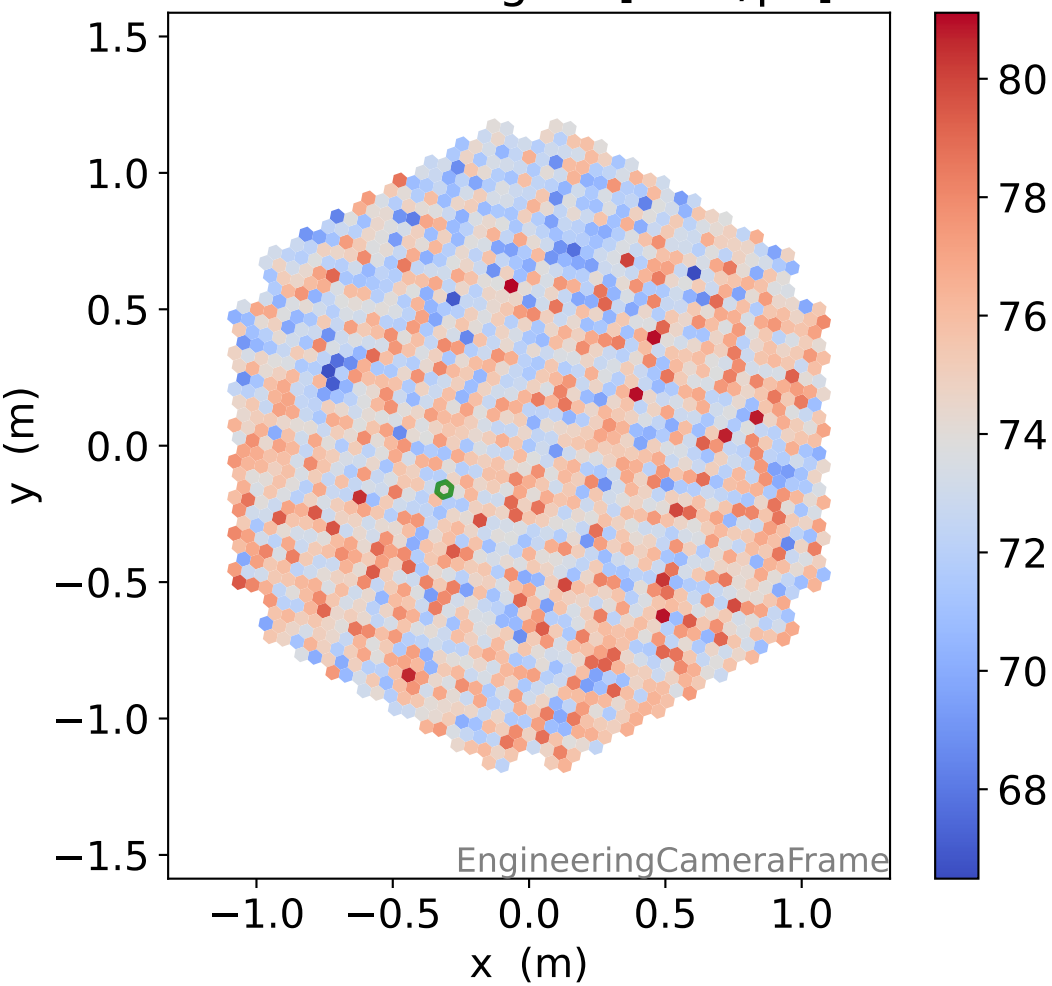
## FF sample of 10000 events



## pedestal sample of 10000 events

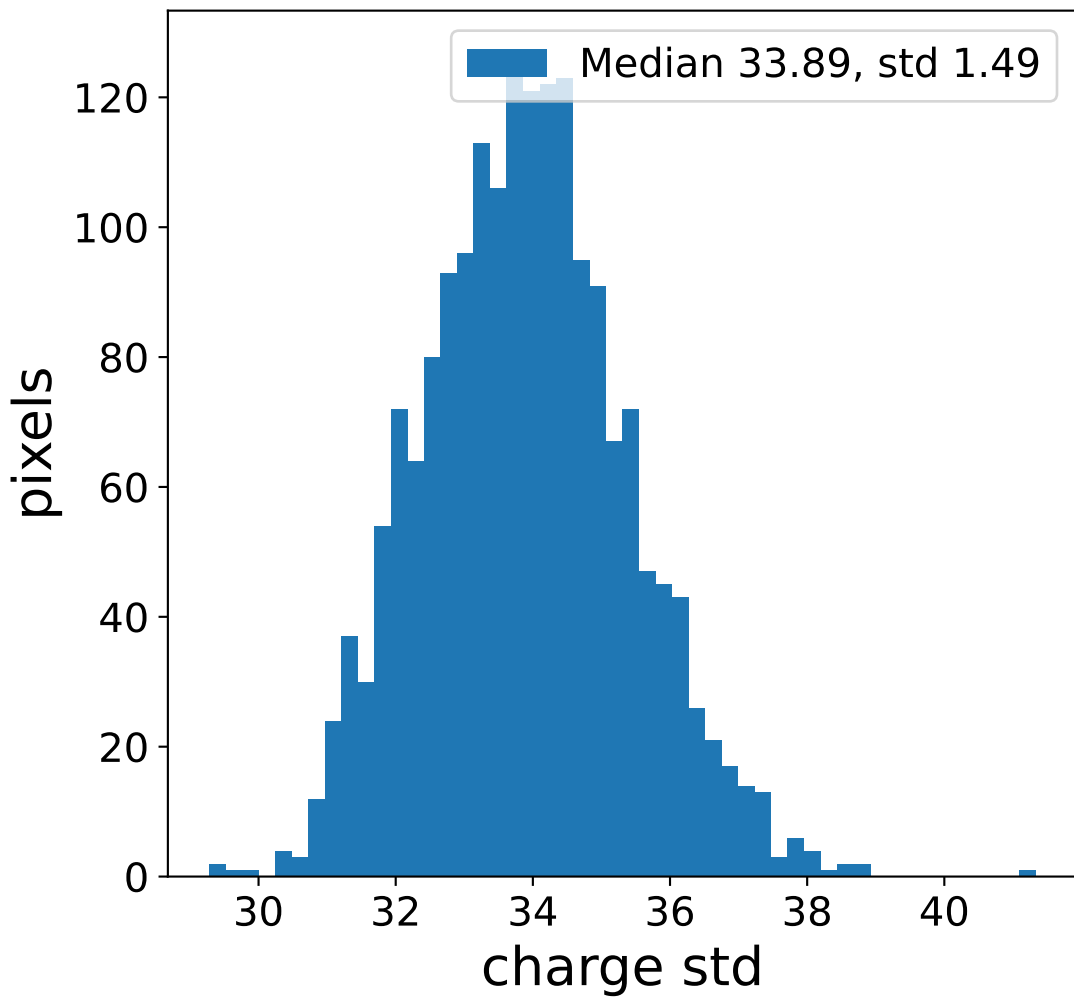
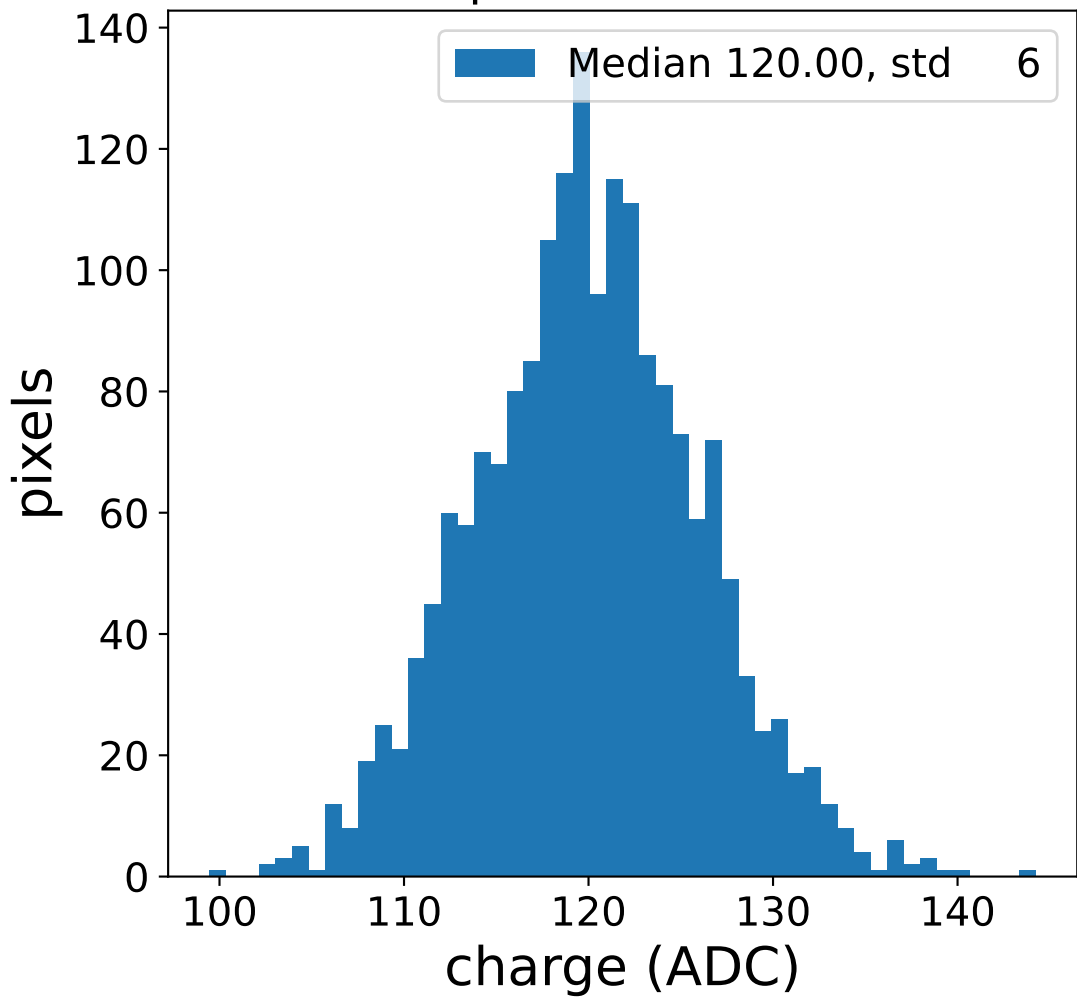


## flat-fielded gain [ADC/pe]

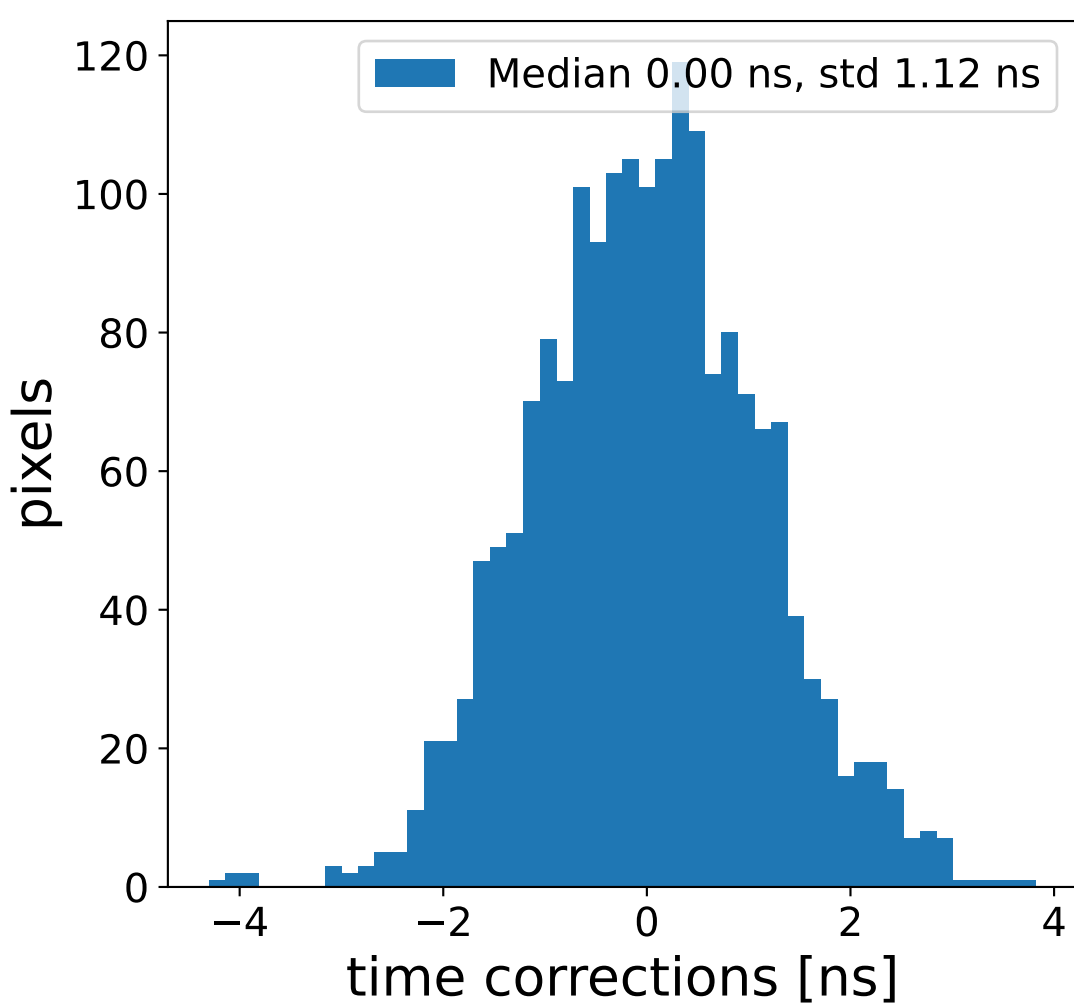
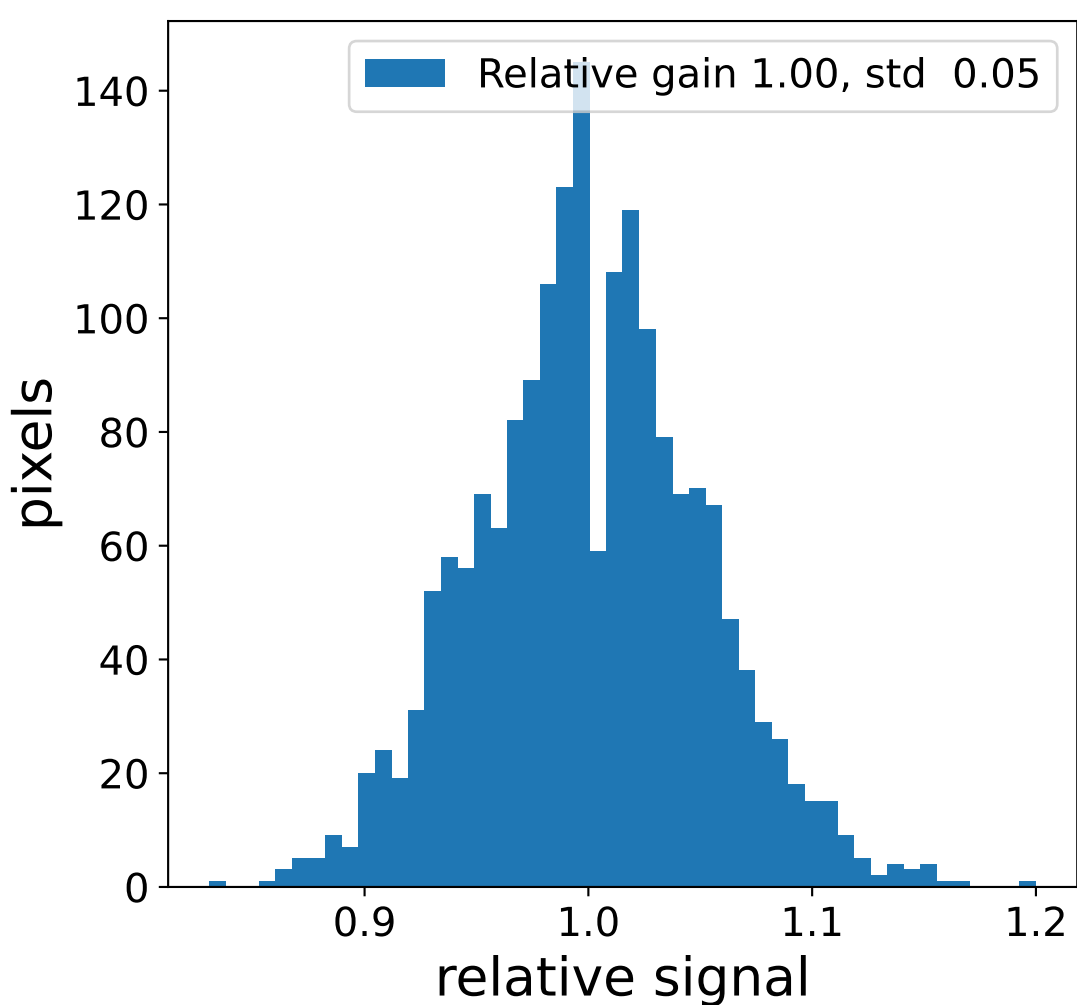
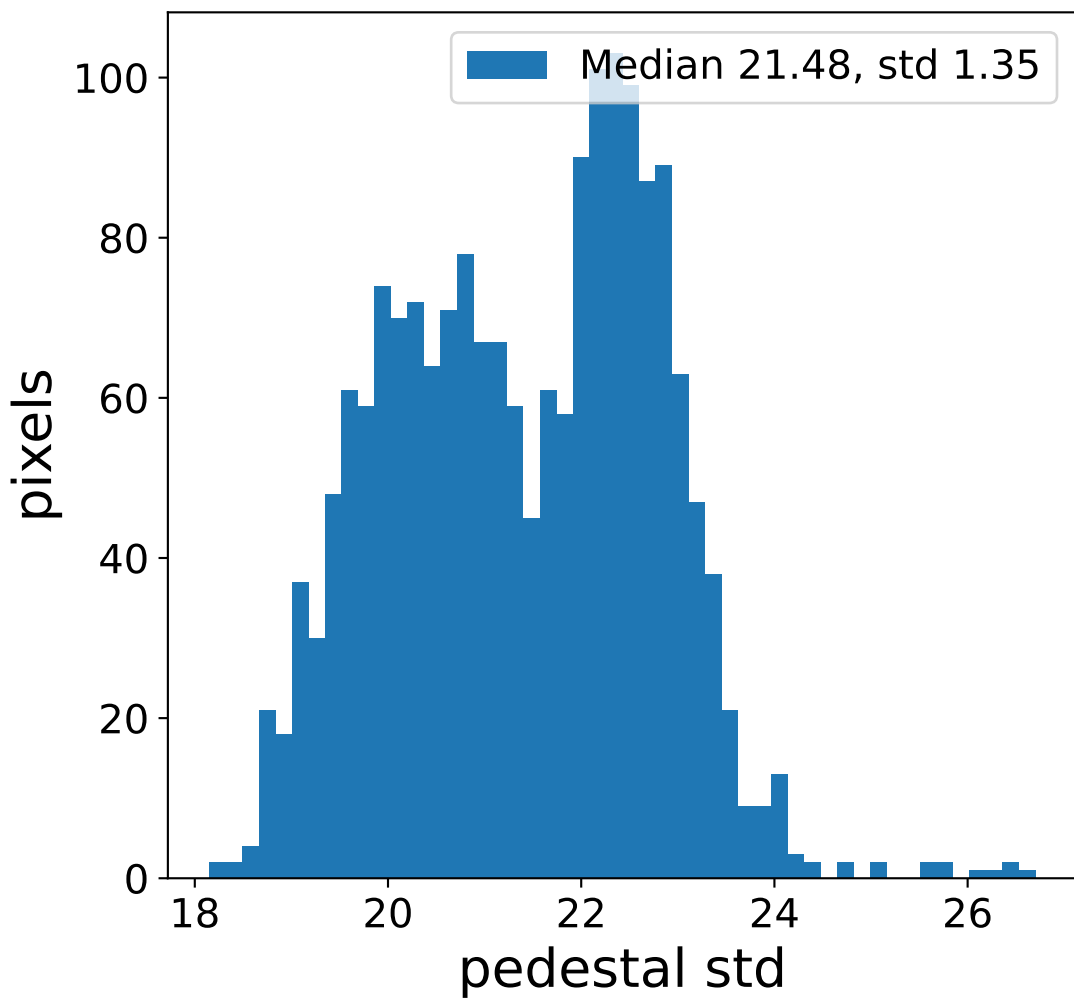
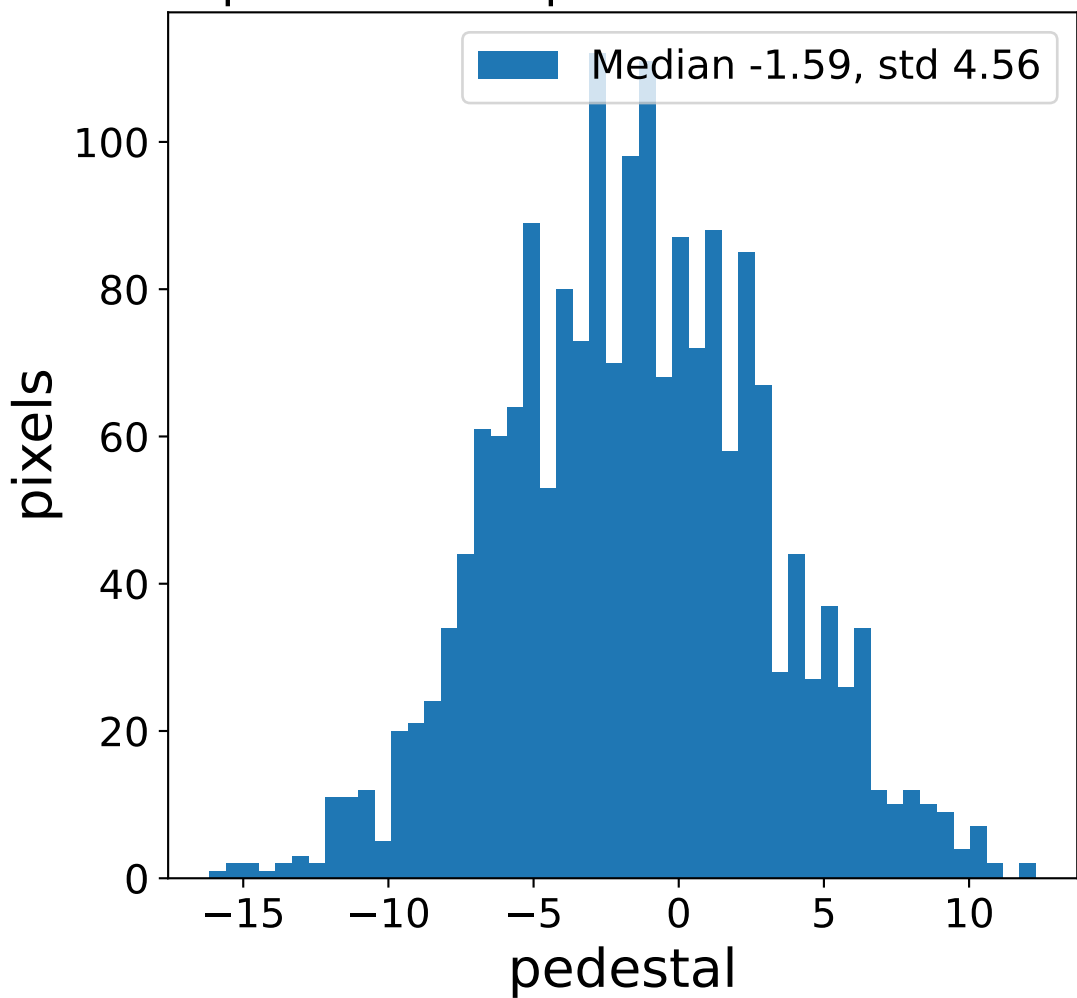


# Run 12554 channel: LG

### FF sample of 10000 events



### pedestal sample of 10000 events



### flat-fielded gain [ADC/pe]

