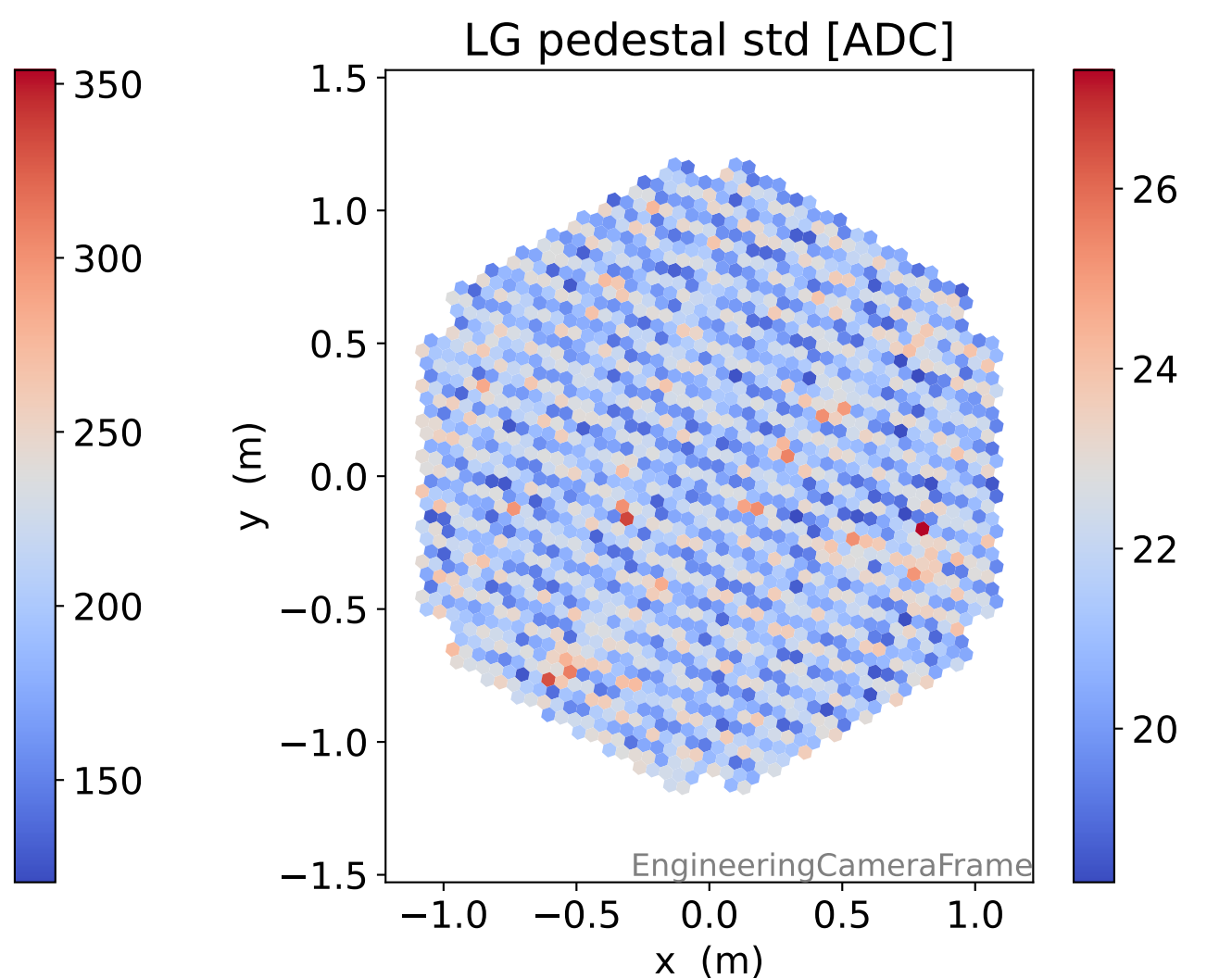
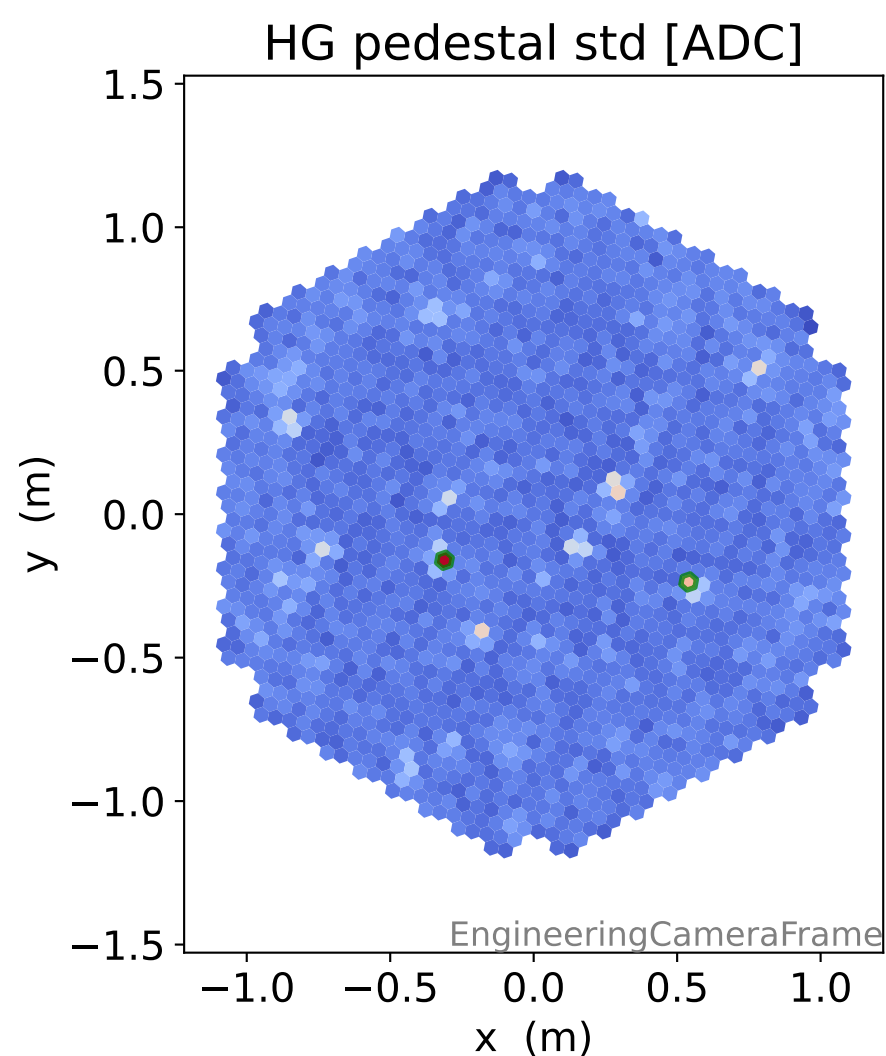
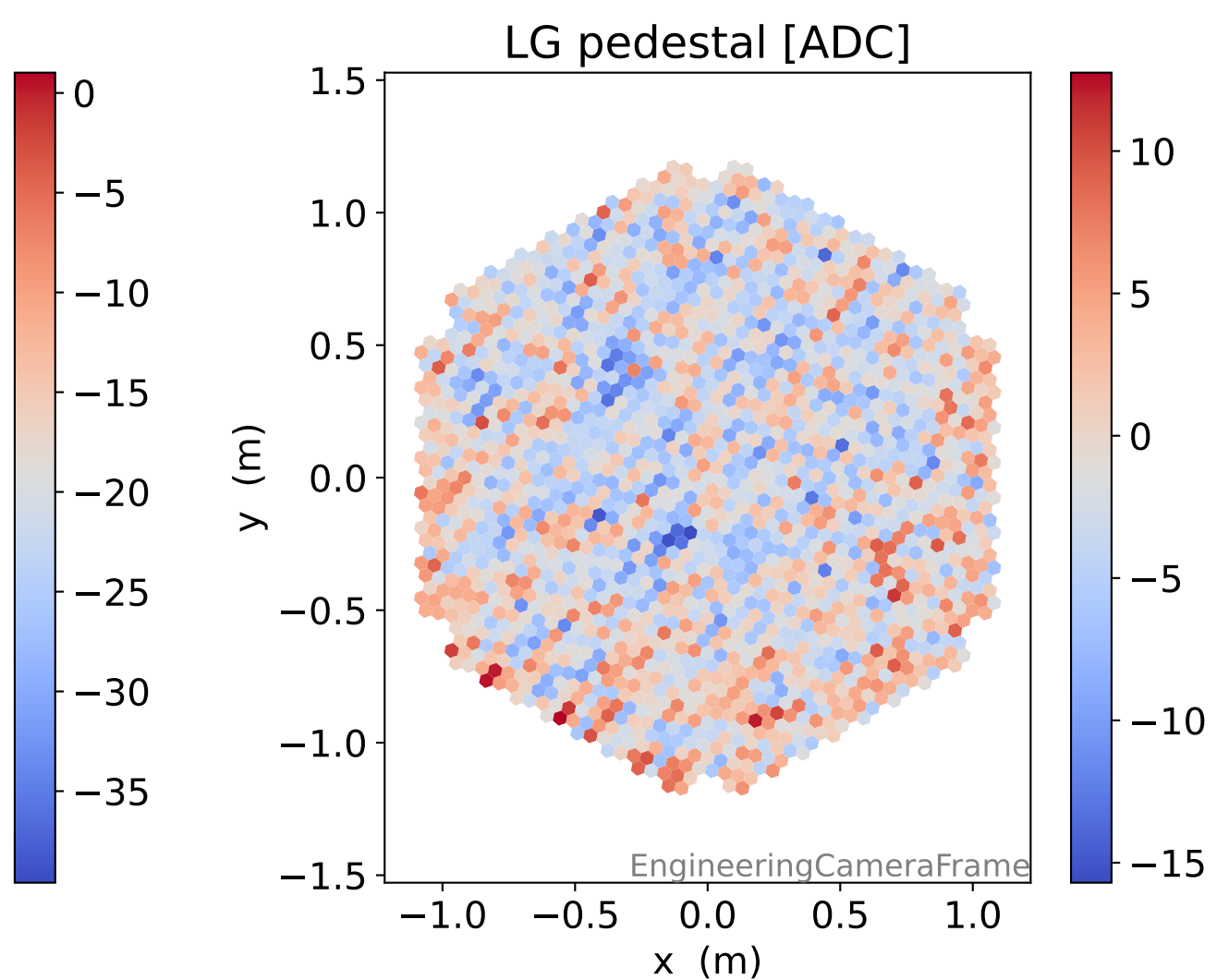
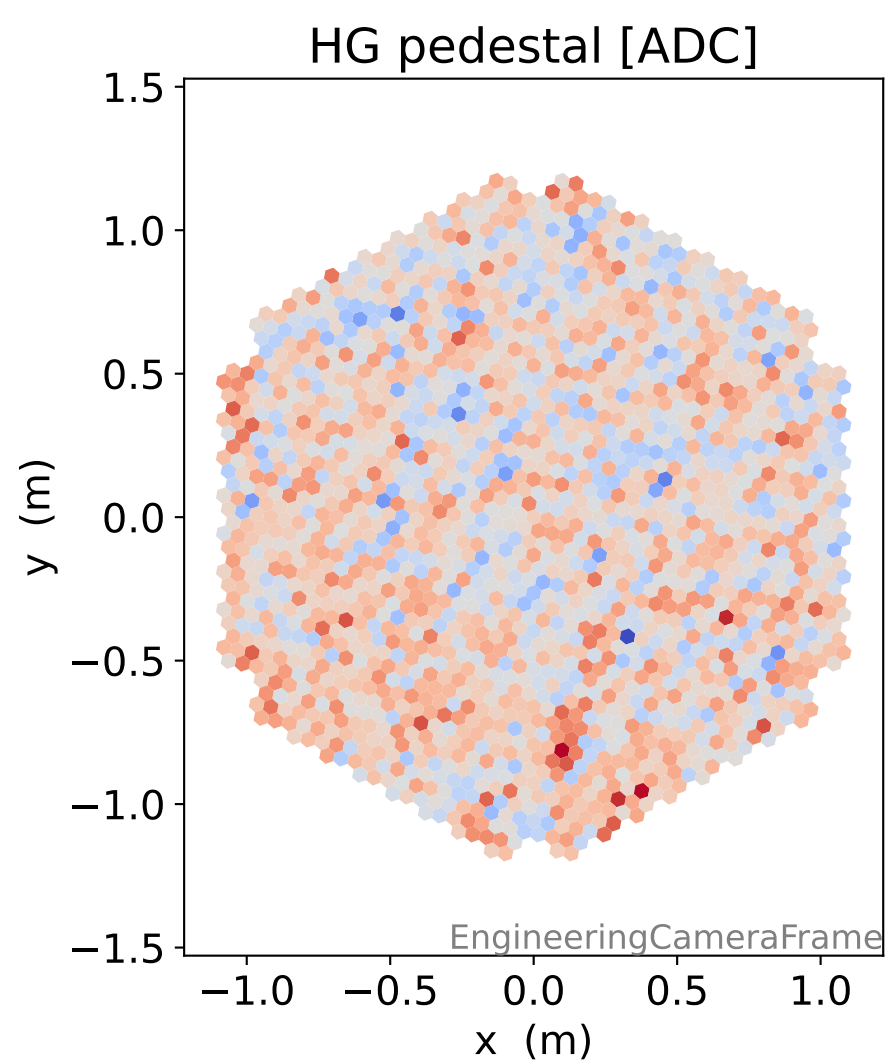
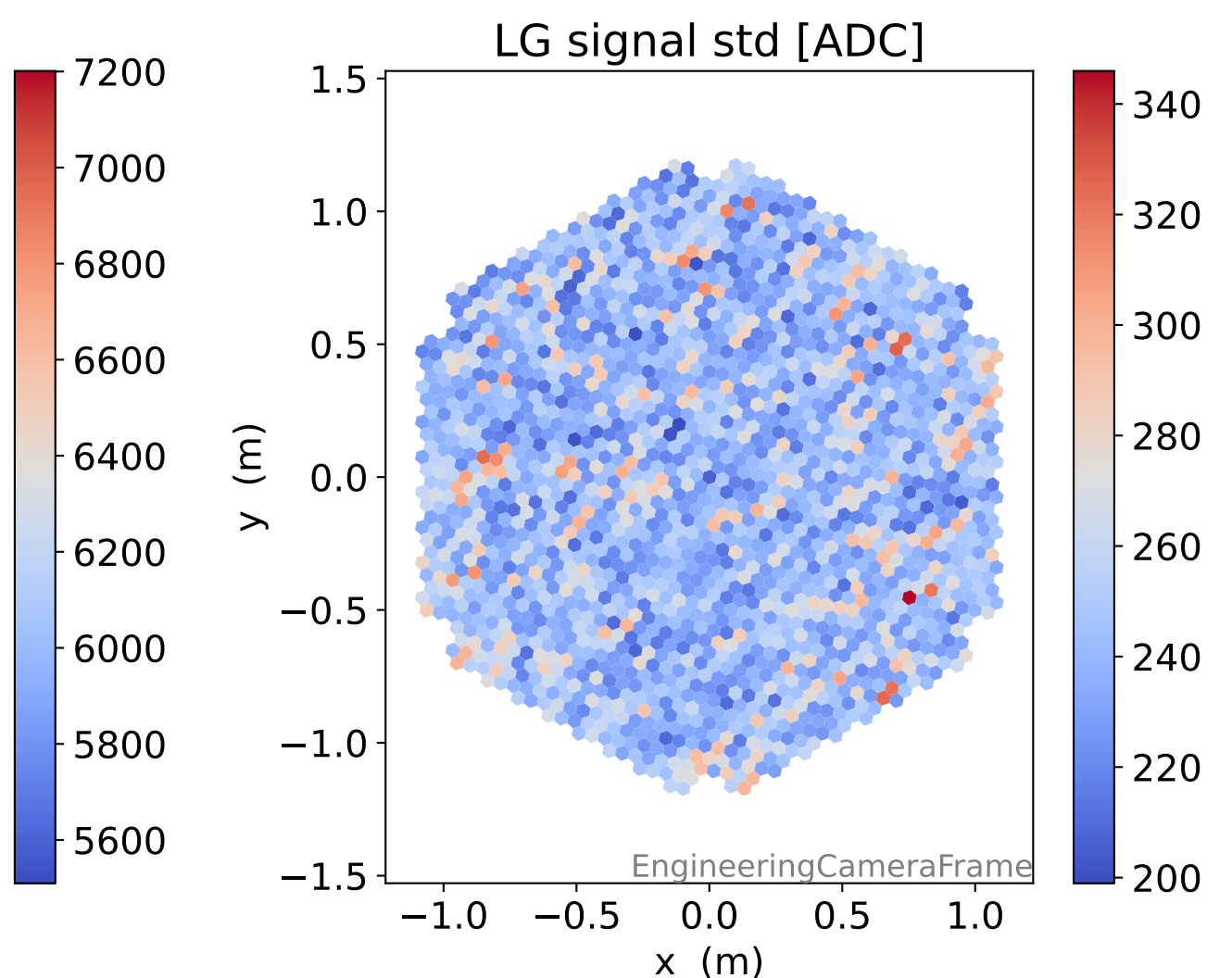
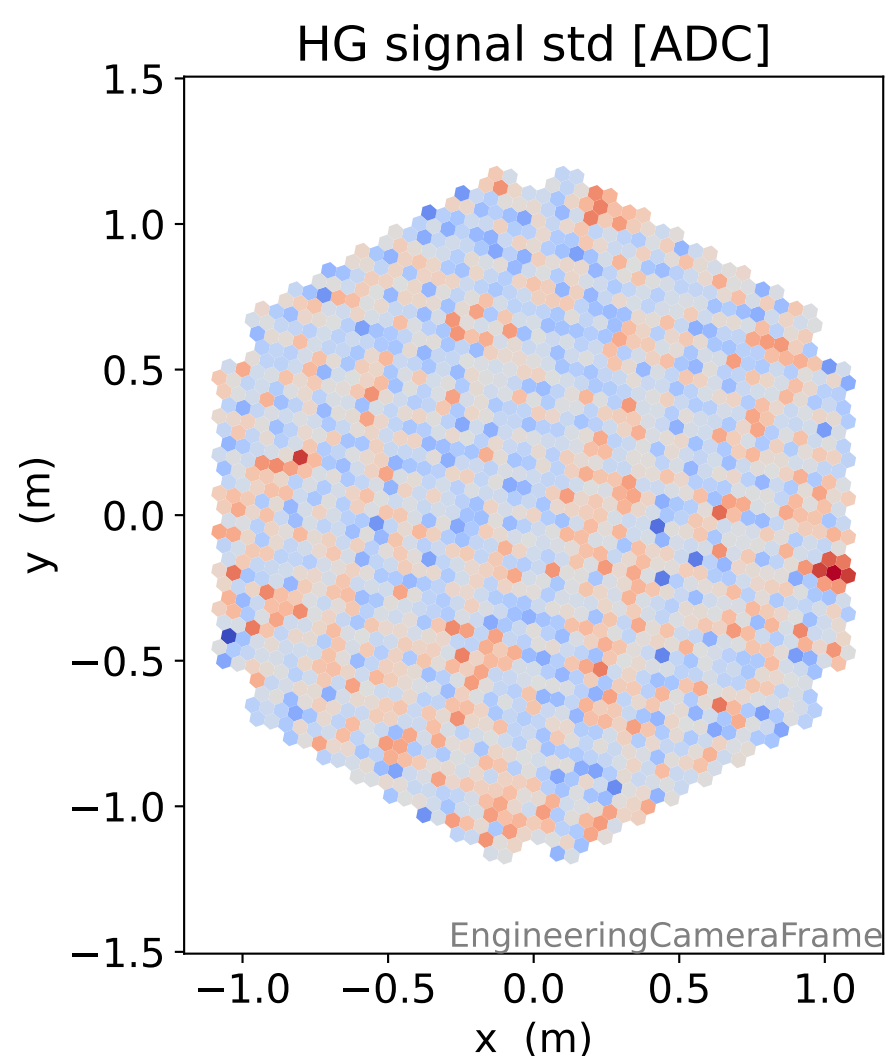
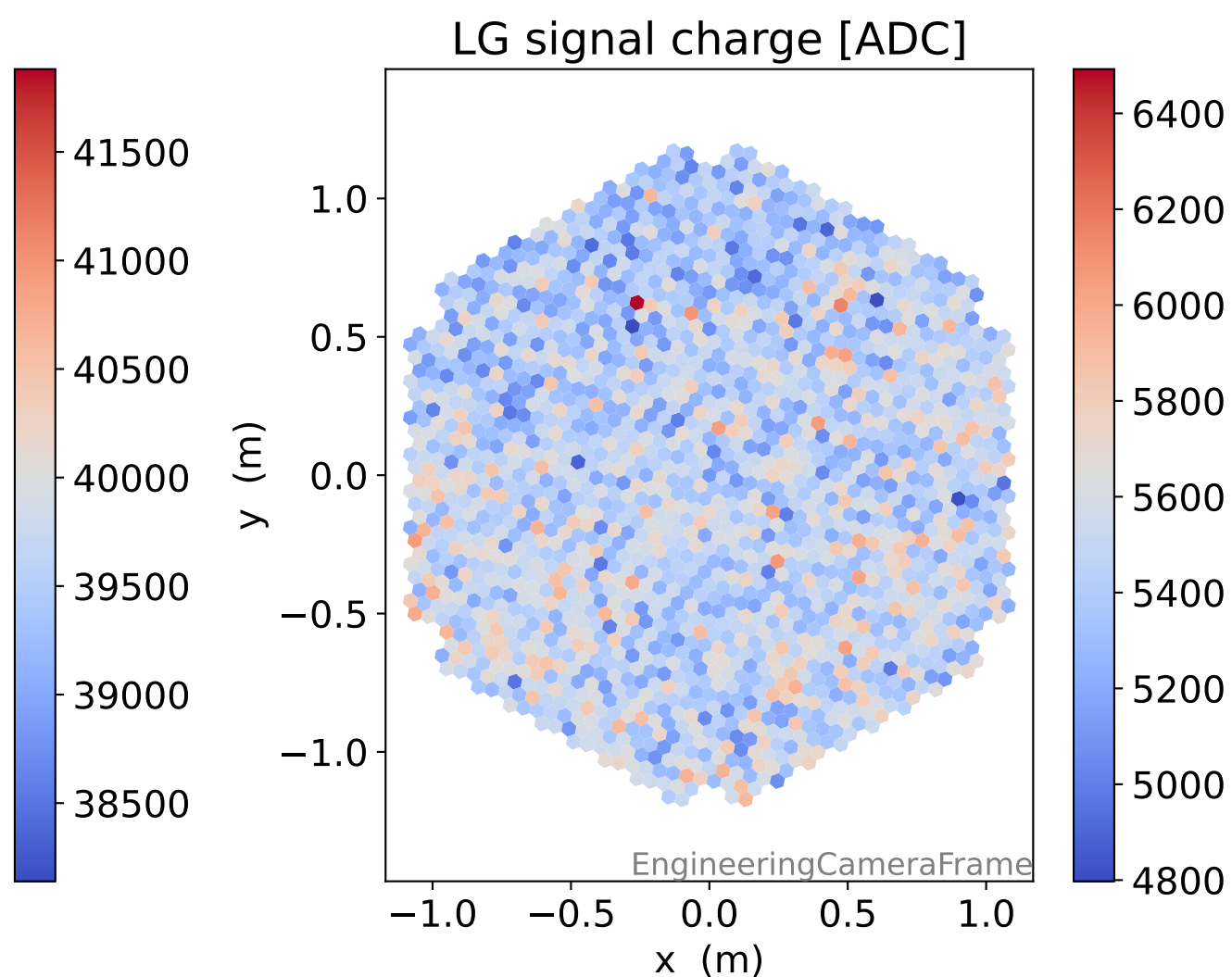
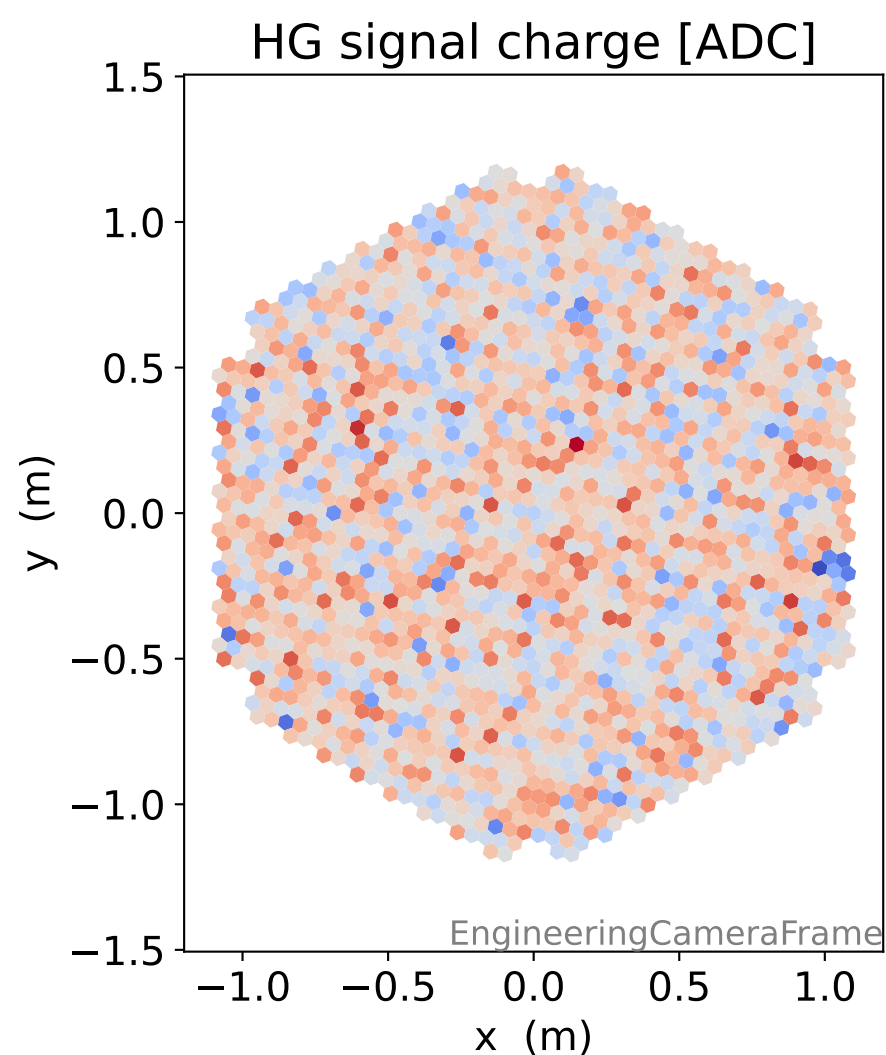
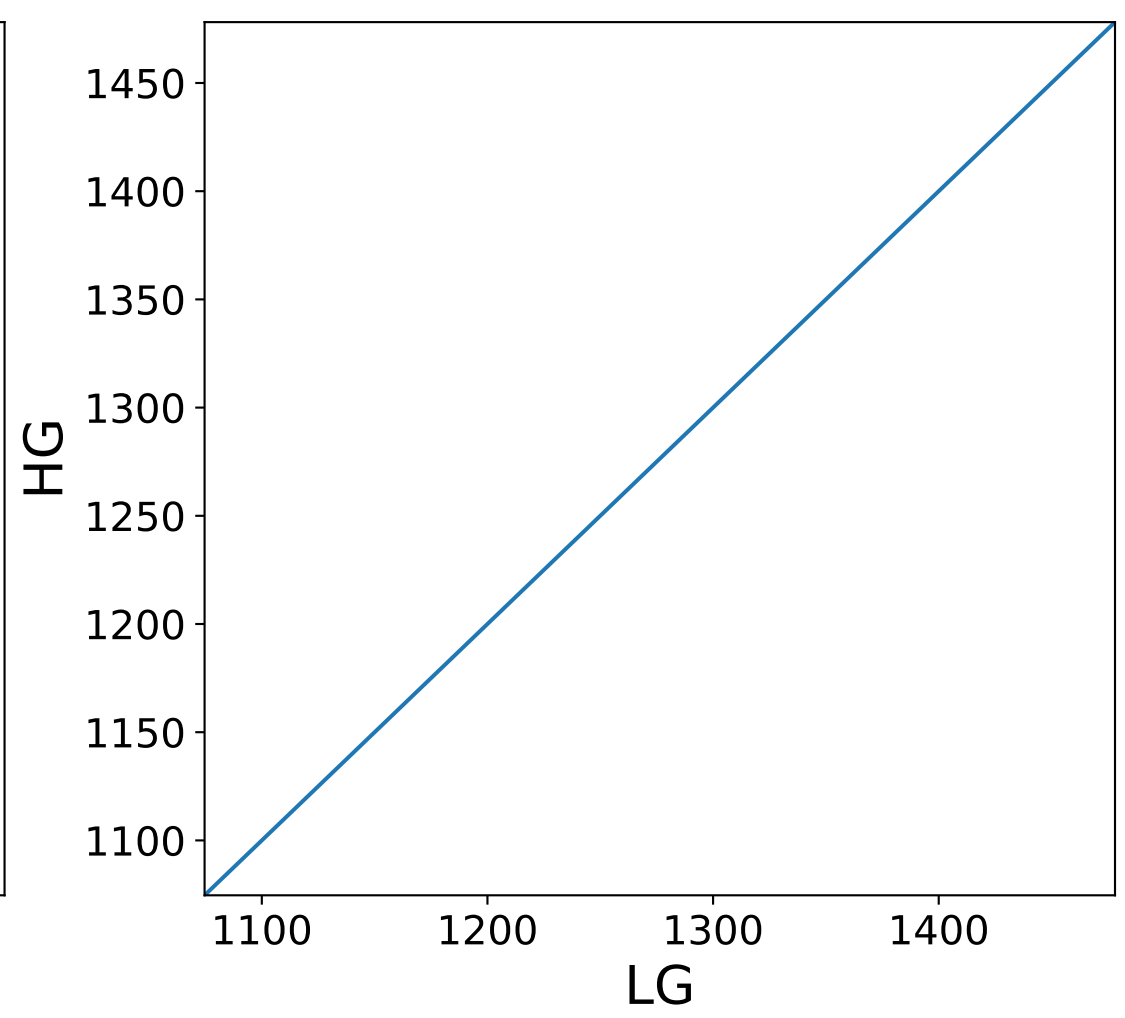
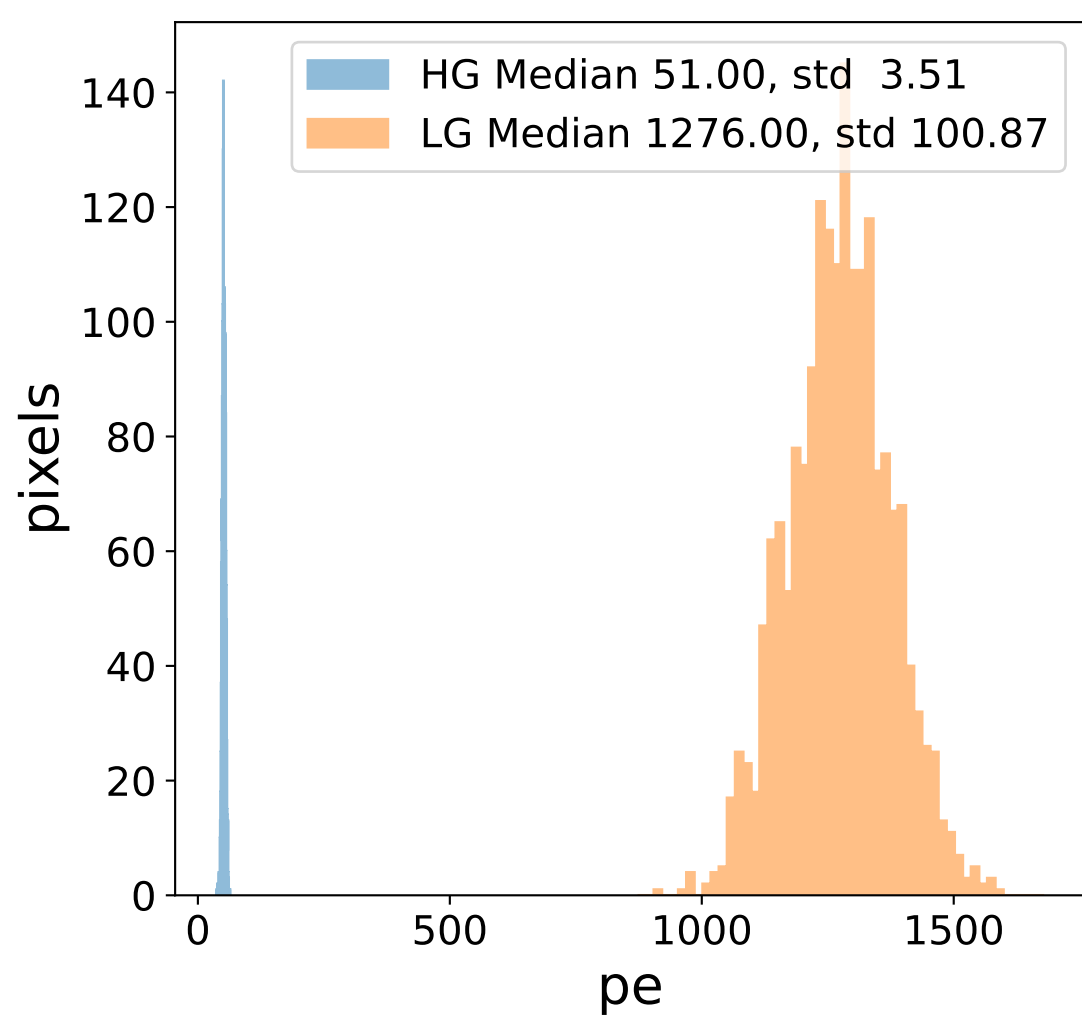
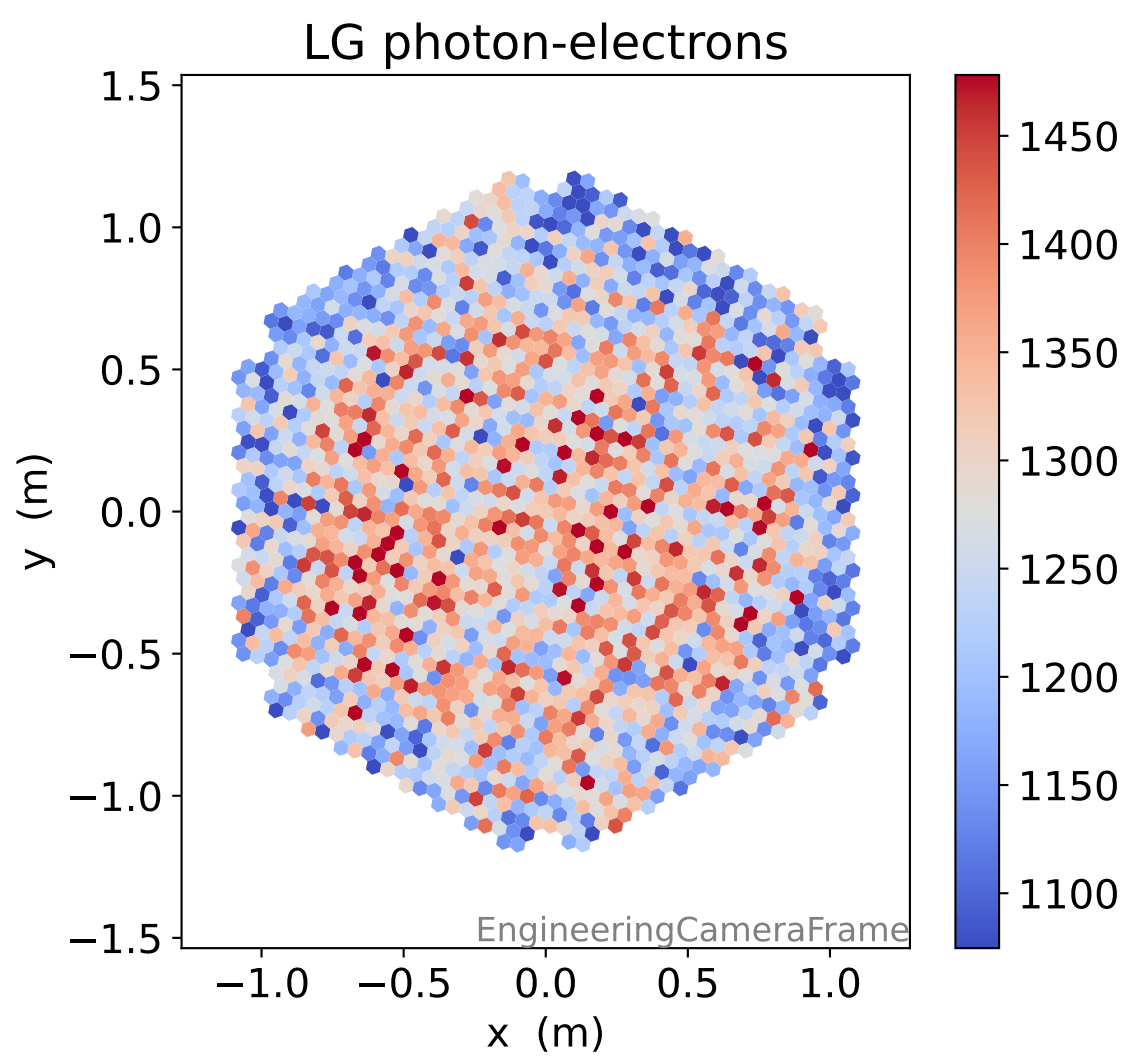
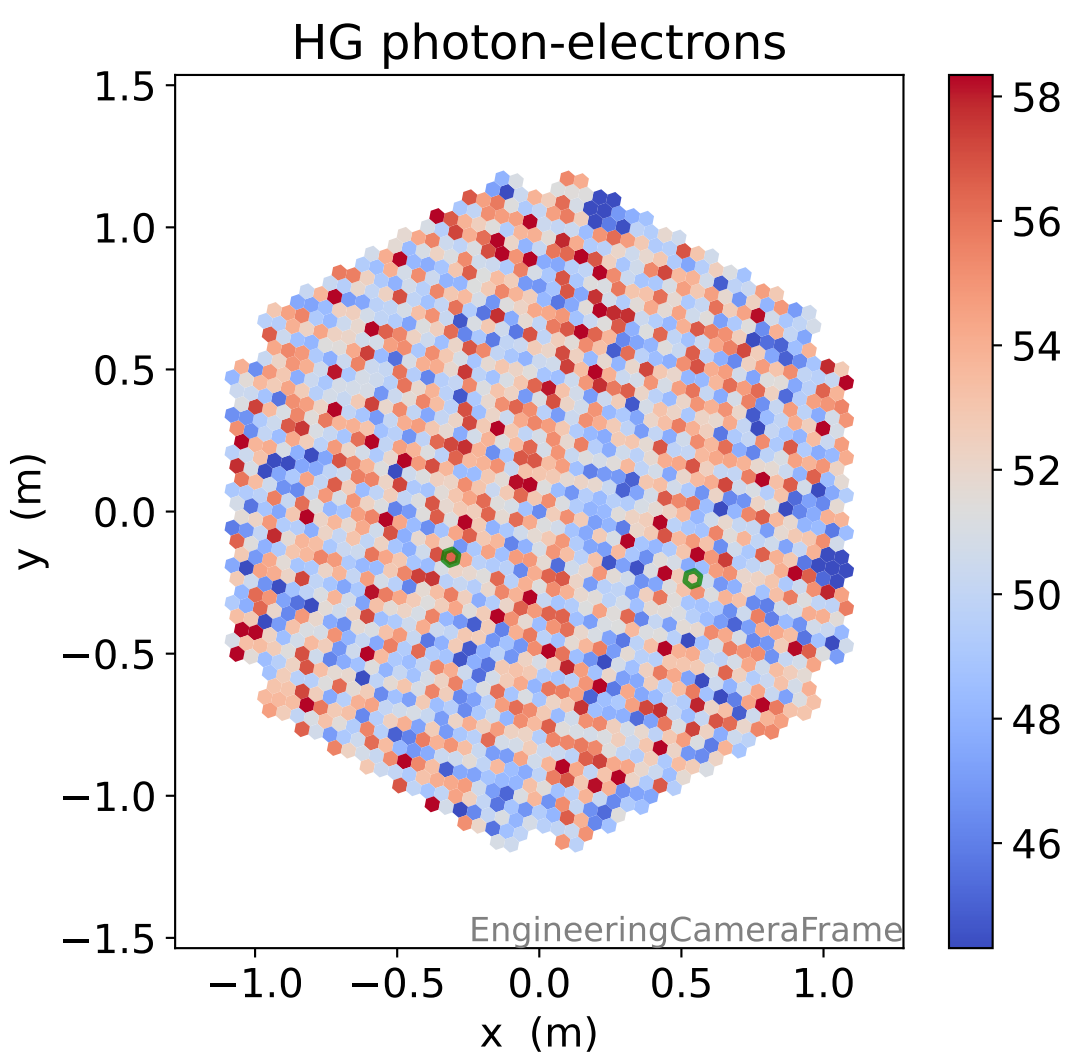
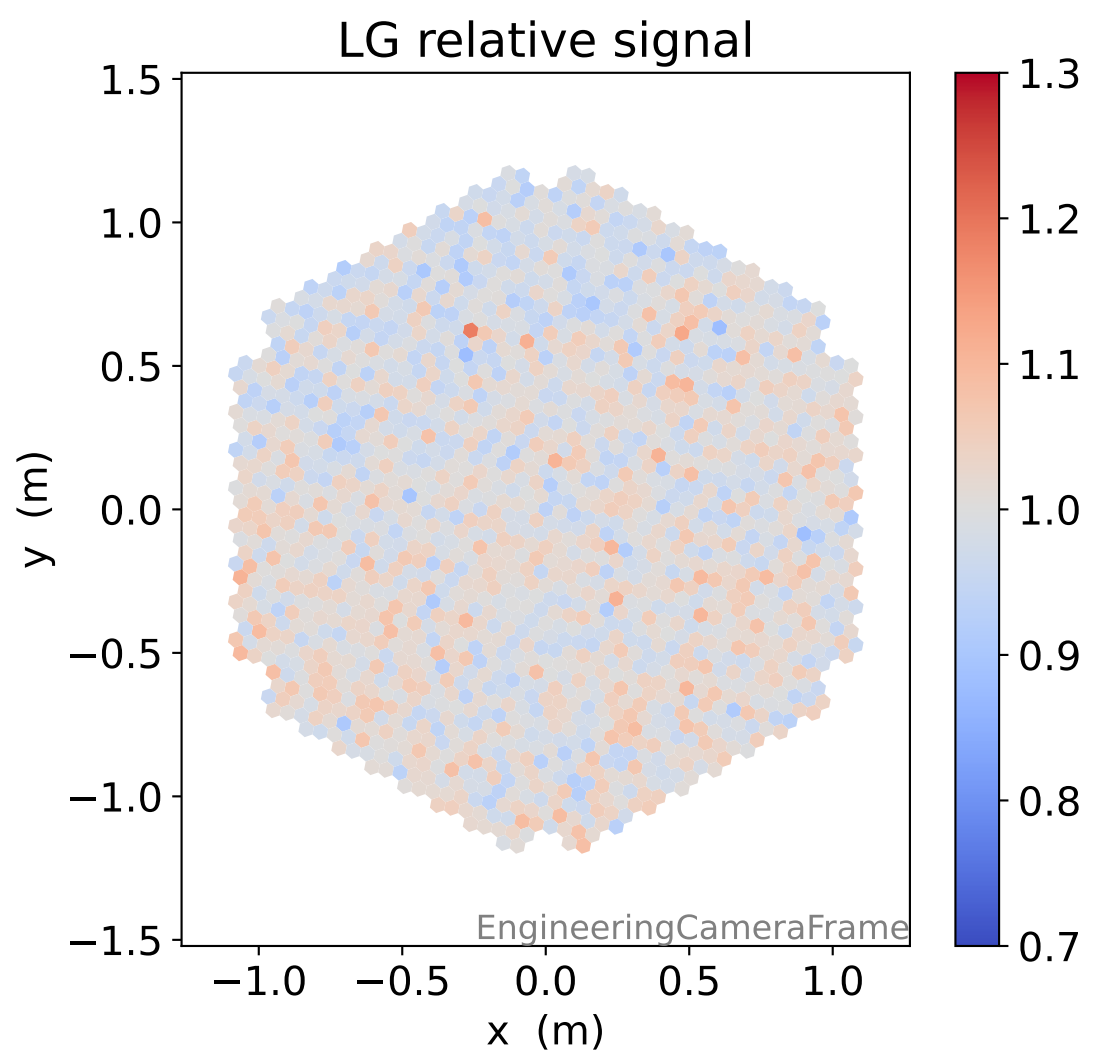
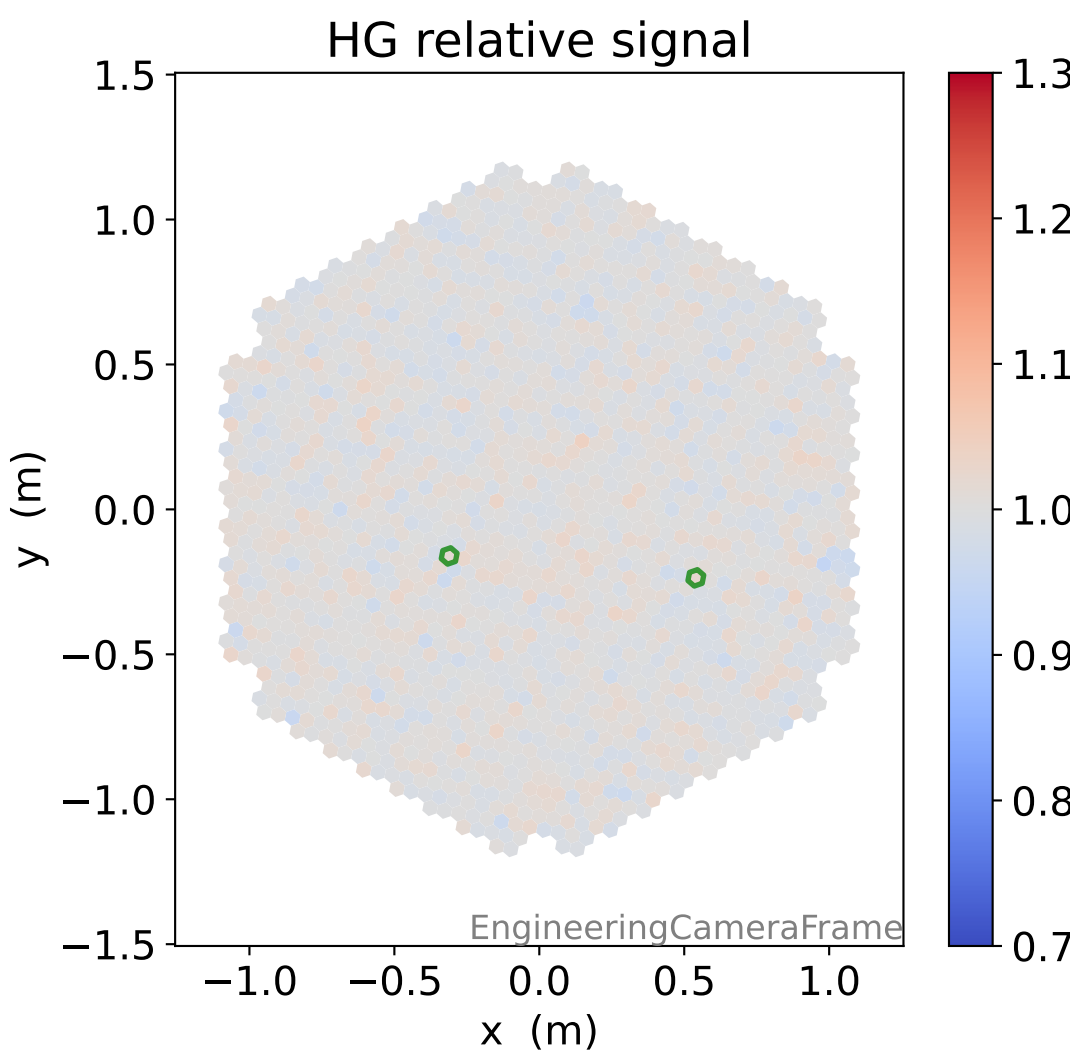
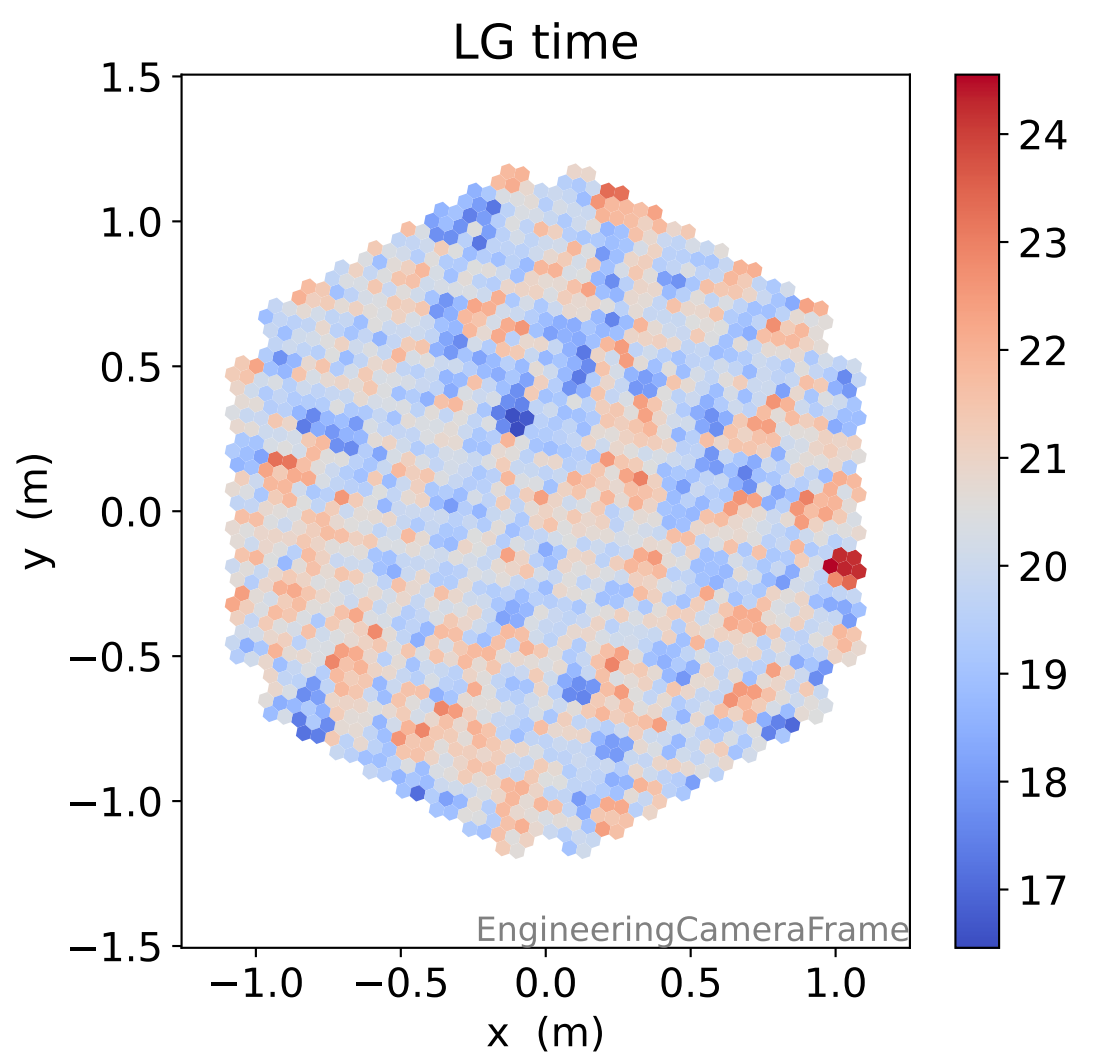
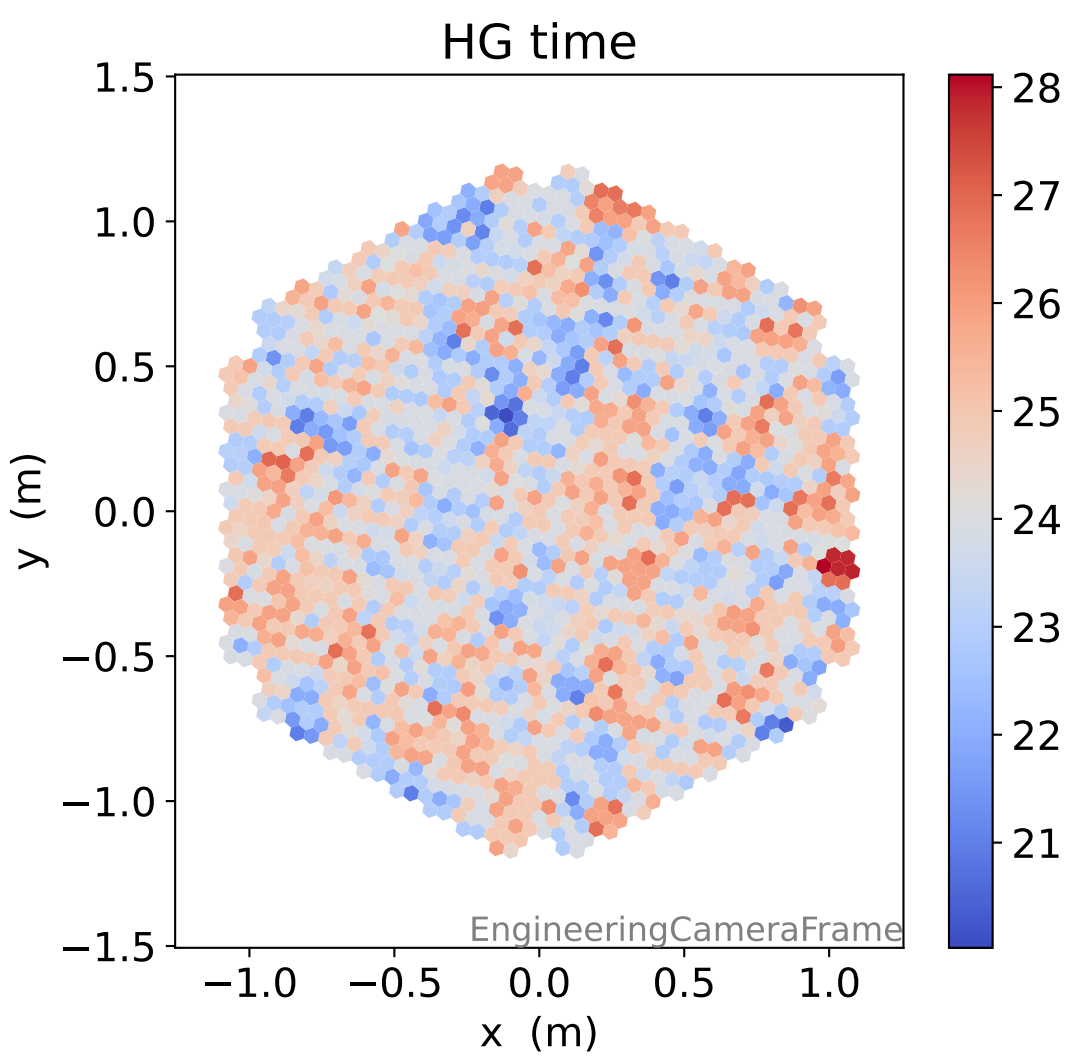


# Run 12551

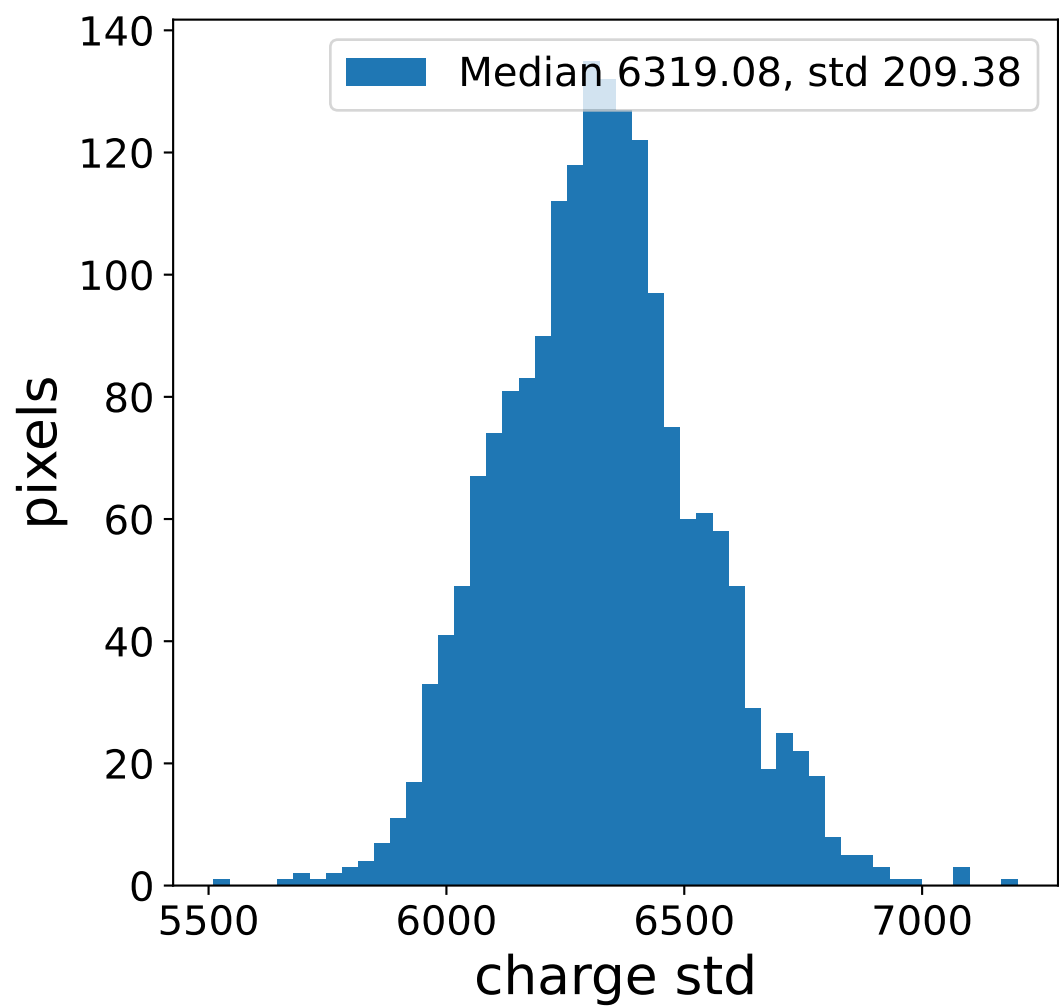
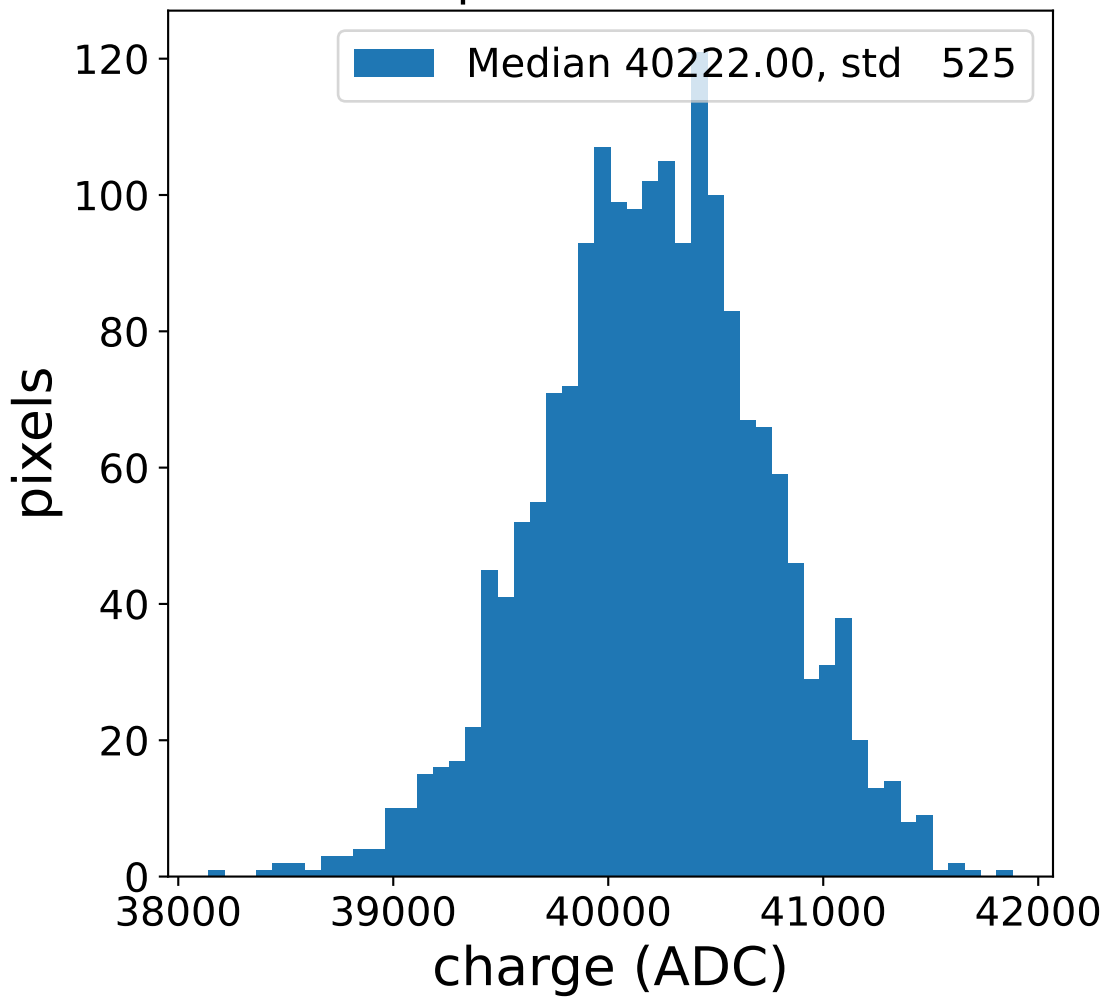


# Run 12551

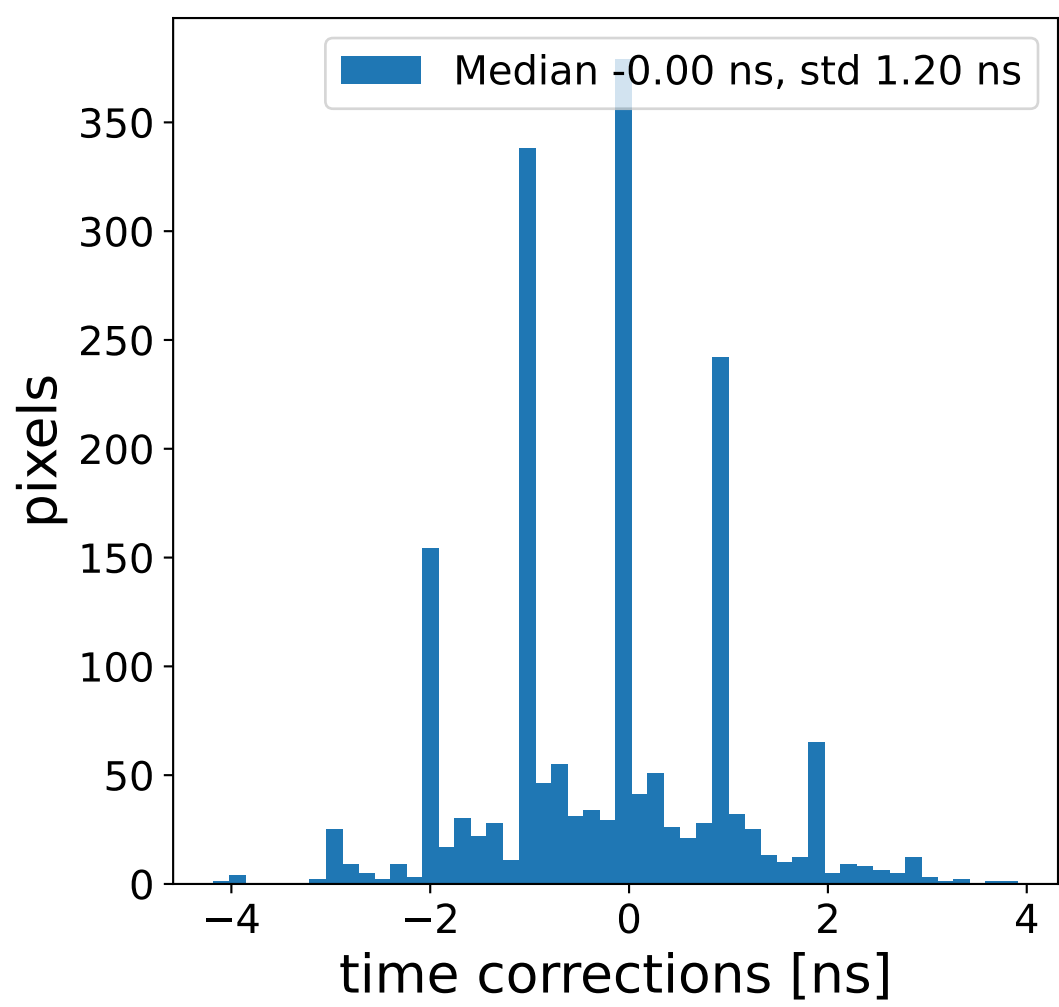
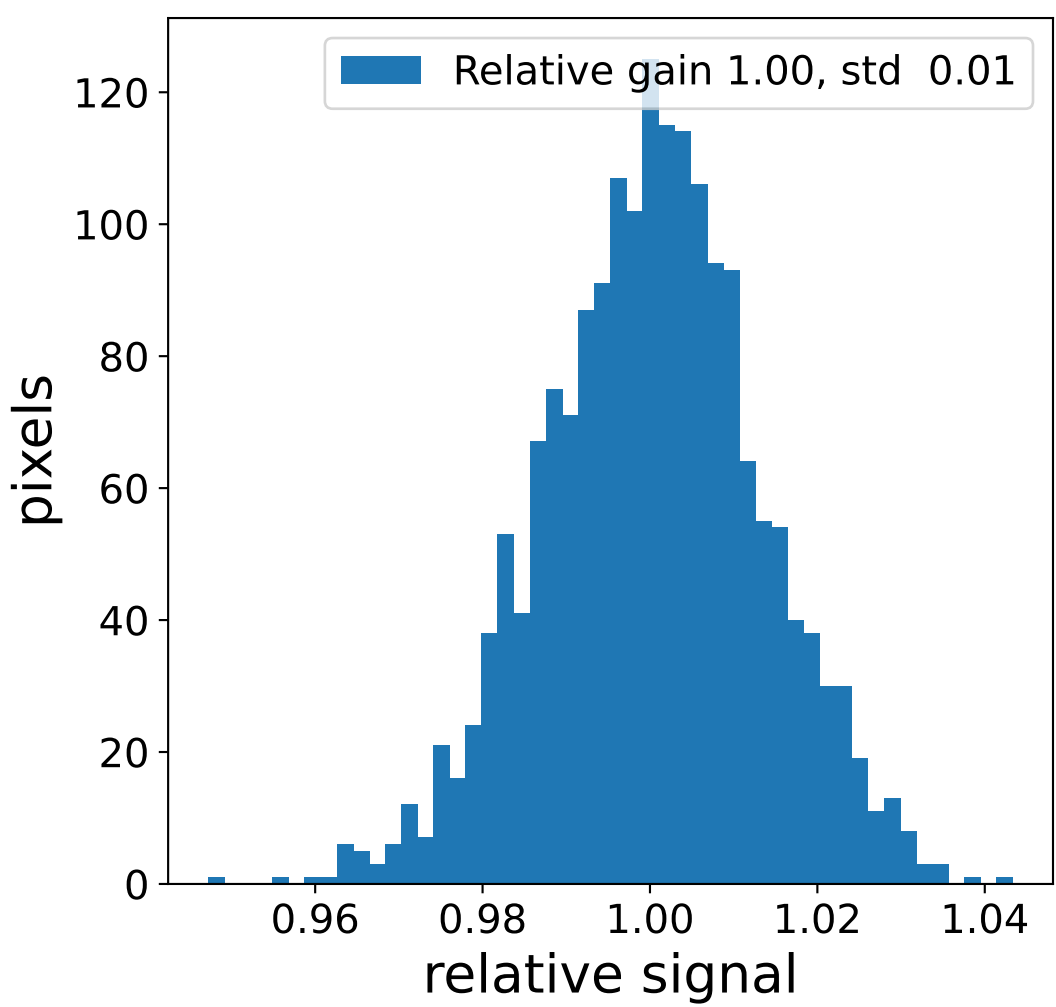
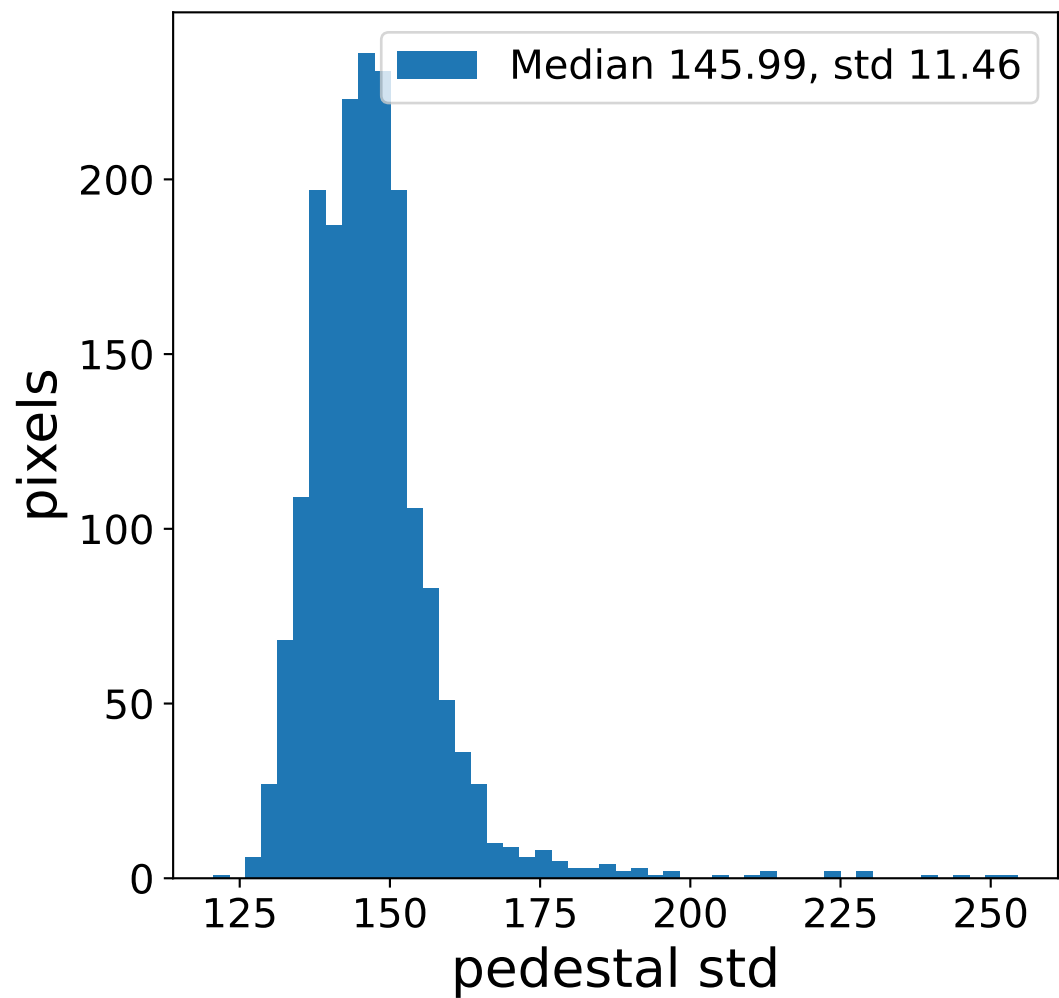
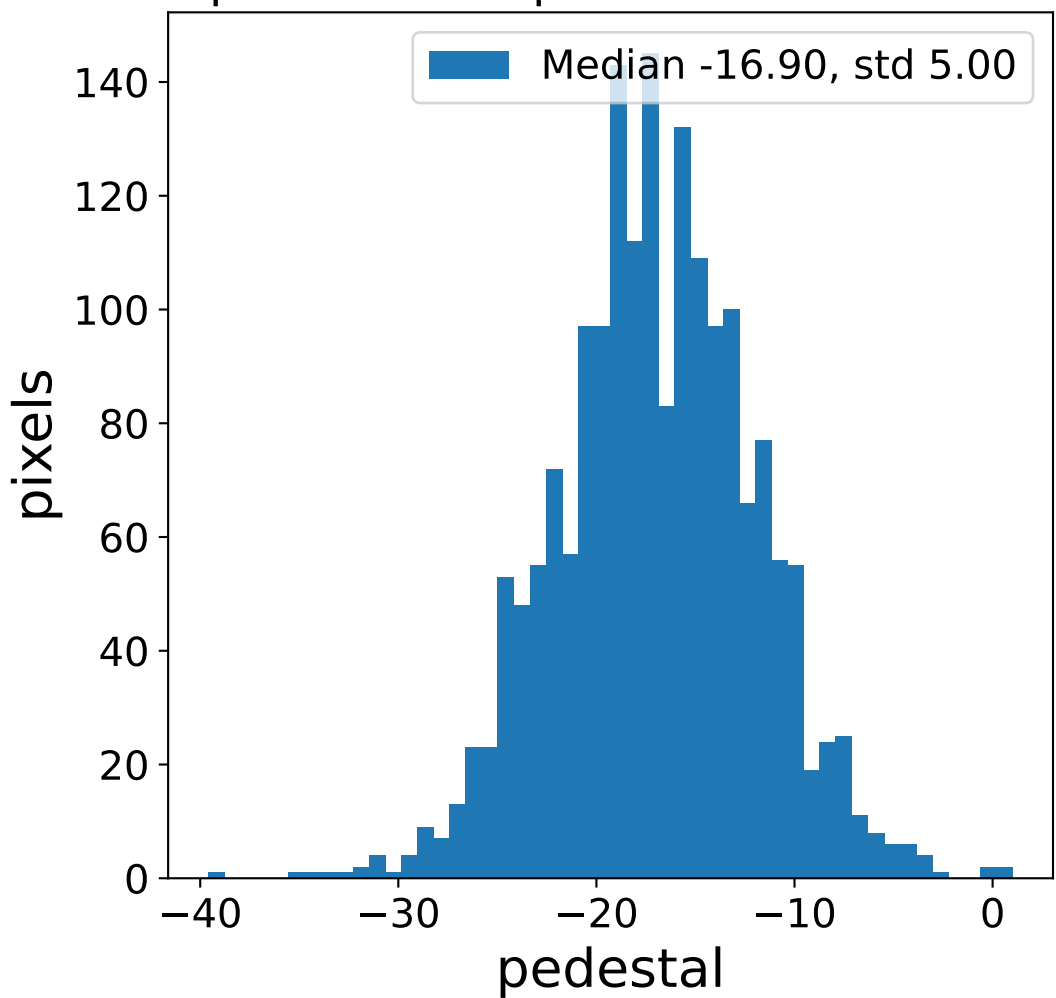


# Run 12551 channel: HG

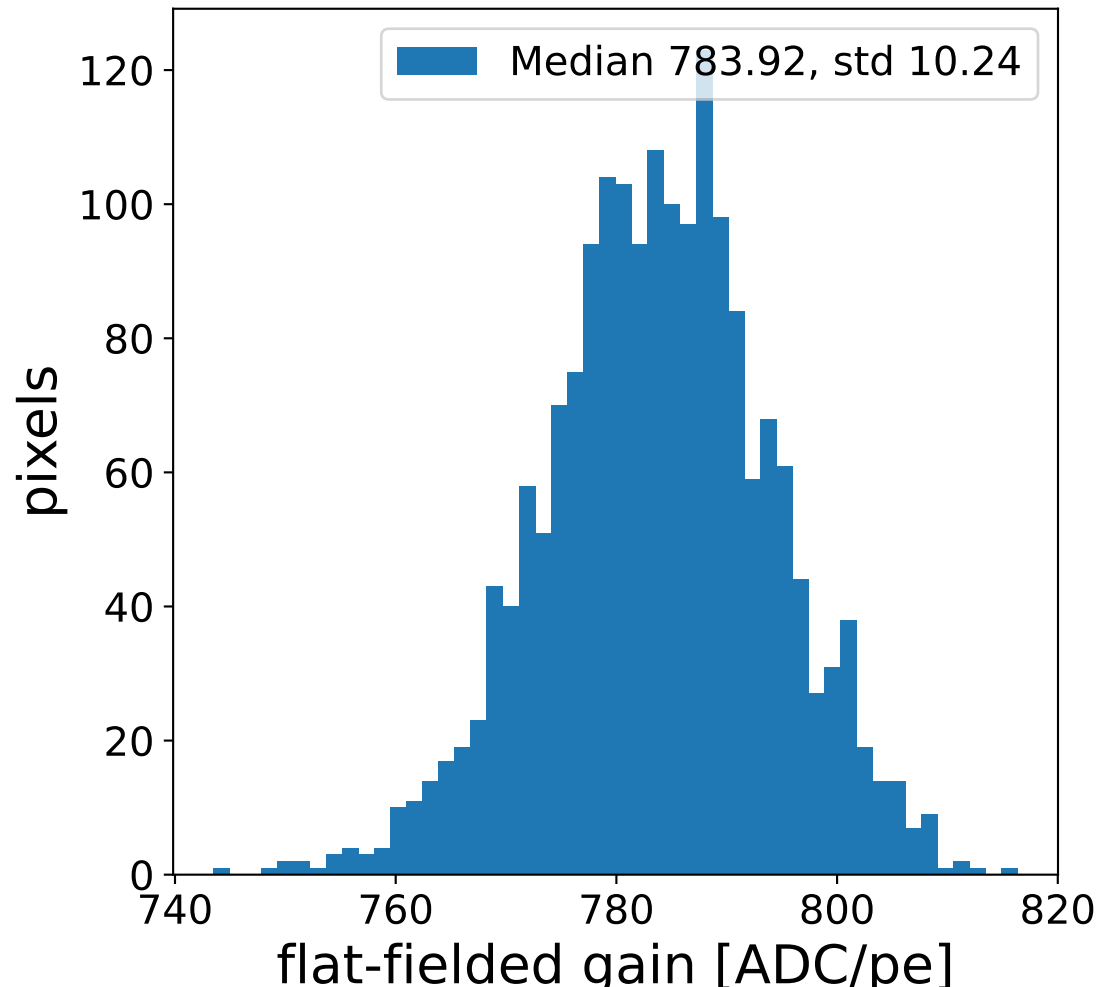
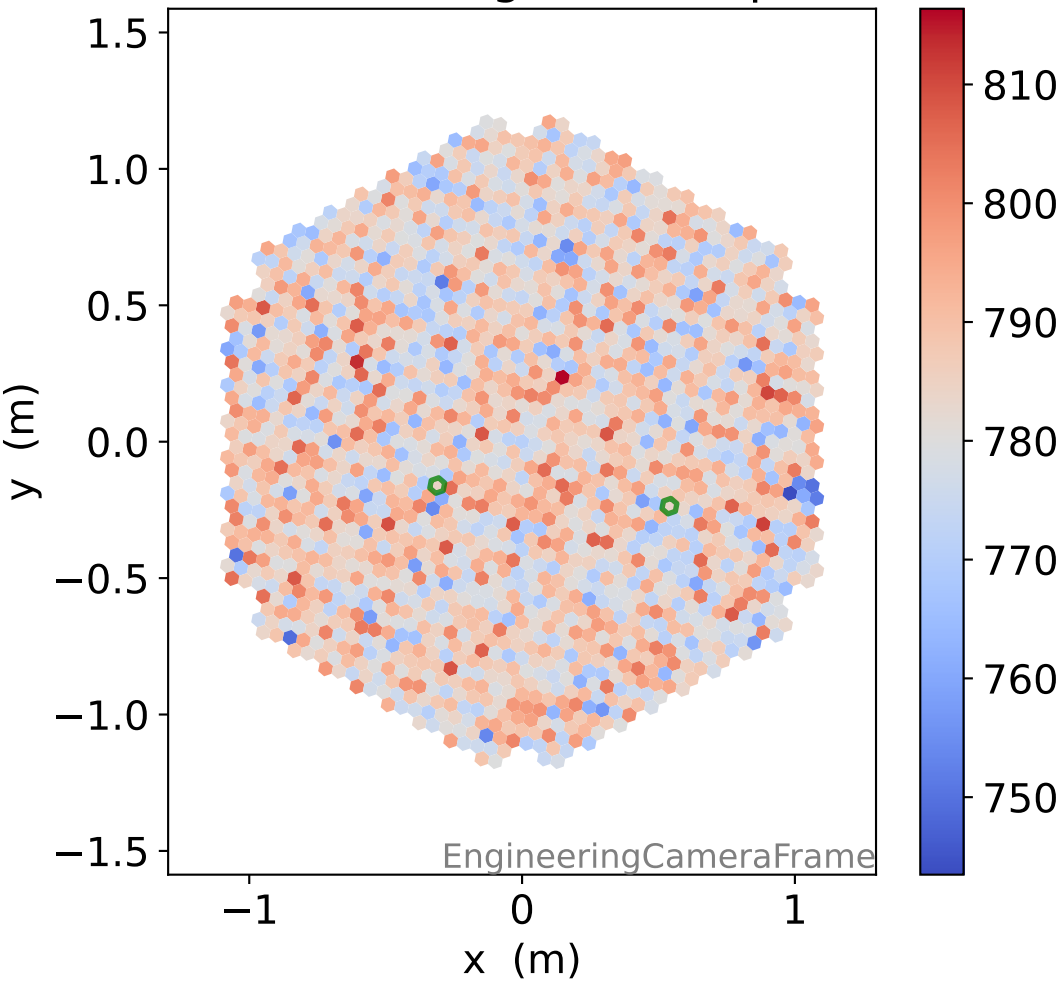
### FF sample of 10000 events



### pedestal sample of 10000 events

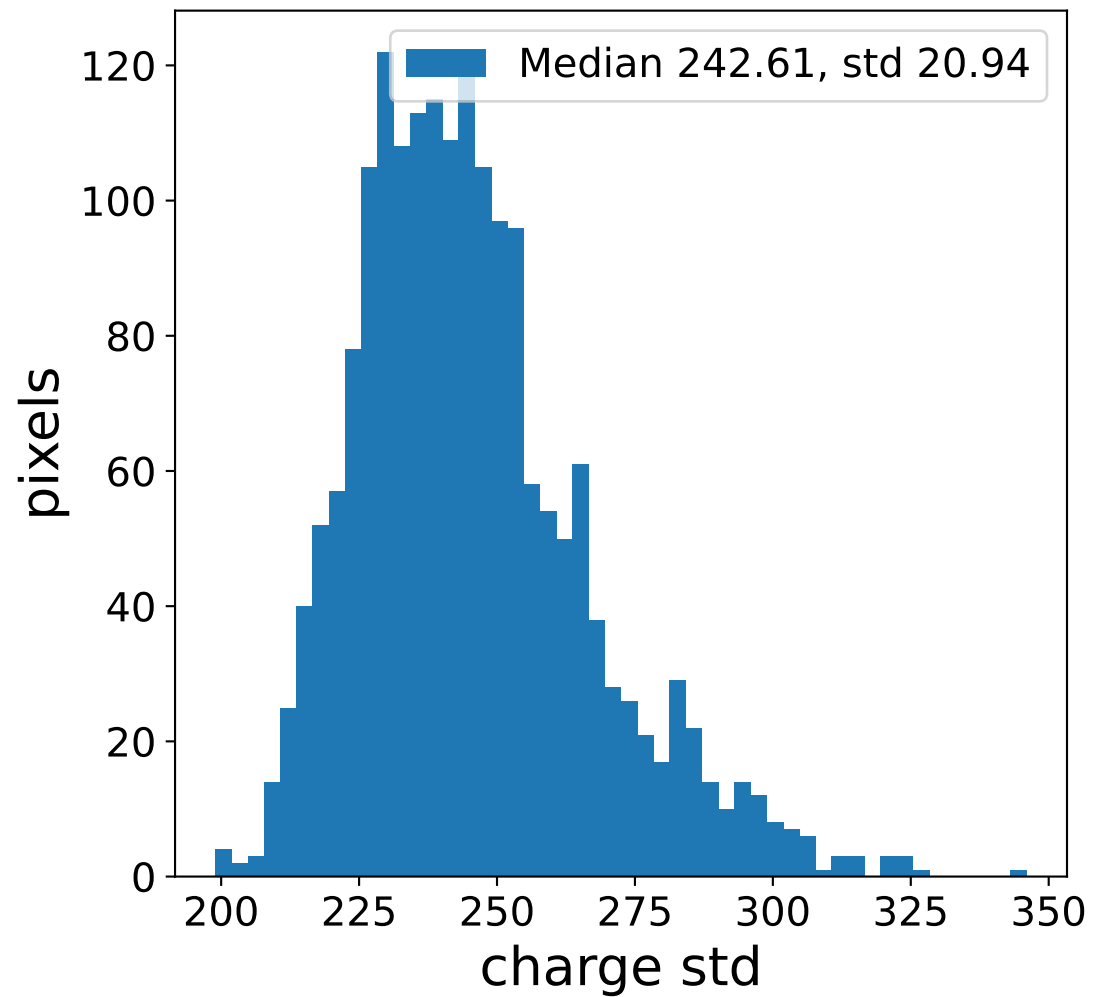
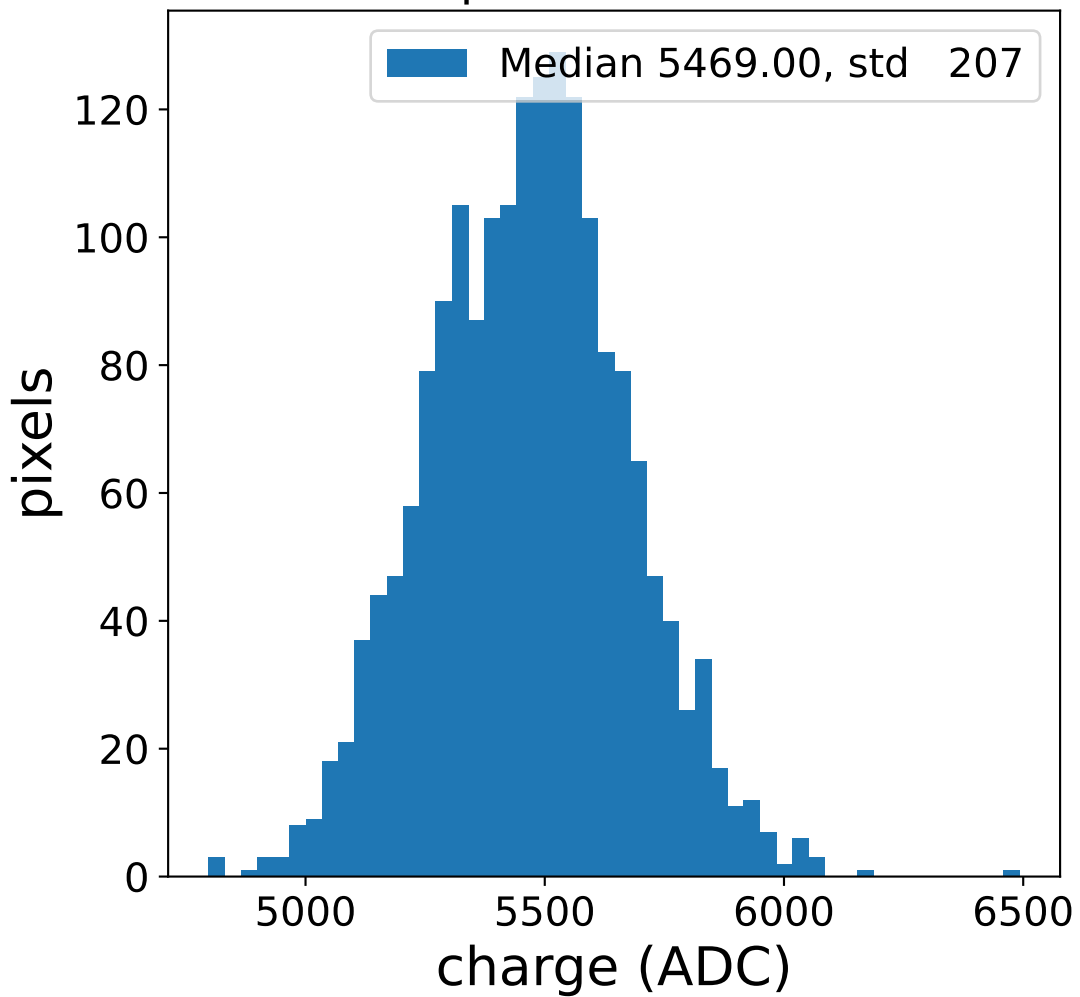


### flat-fielded gain [ADC/pe]

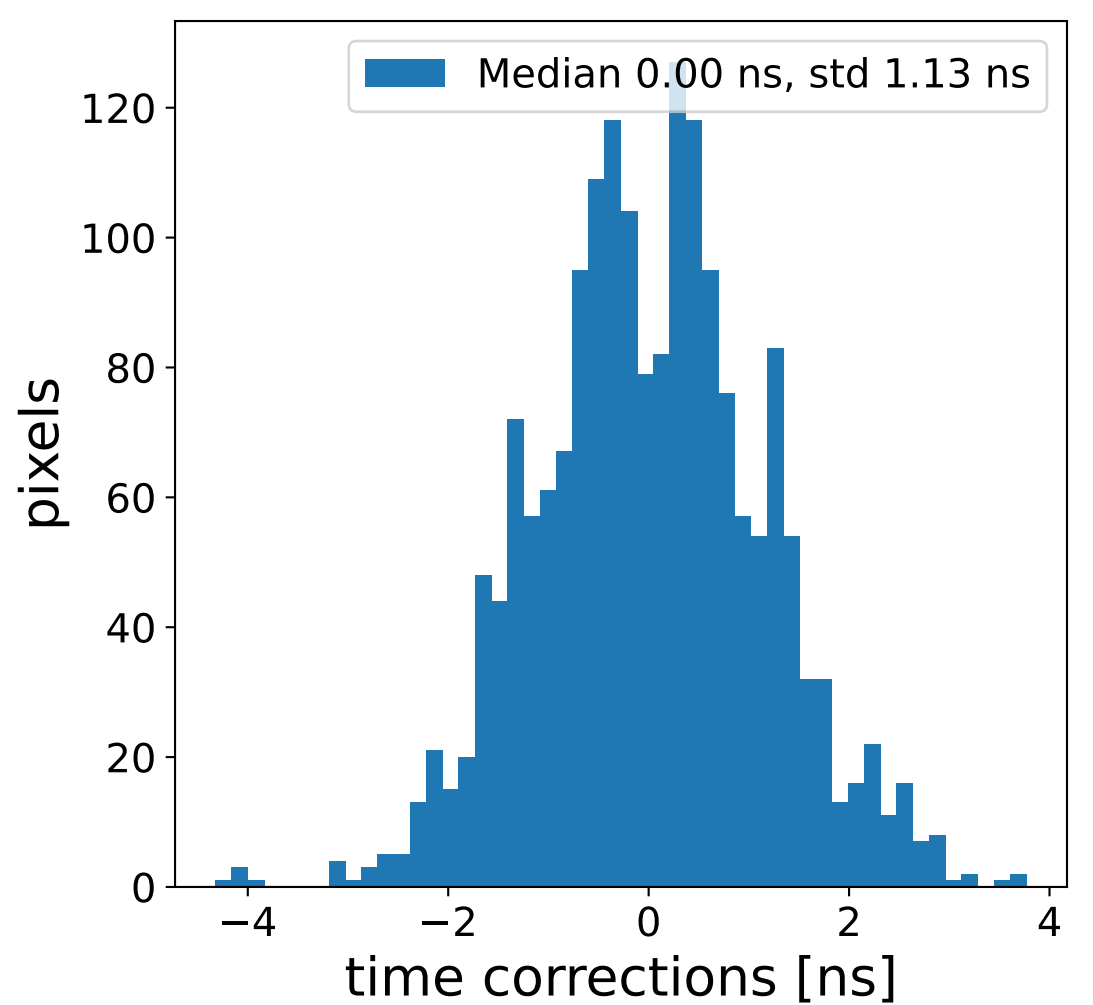
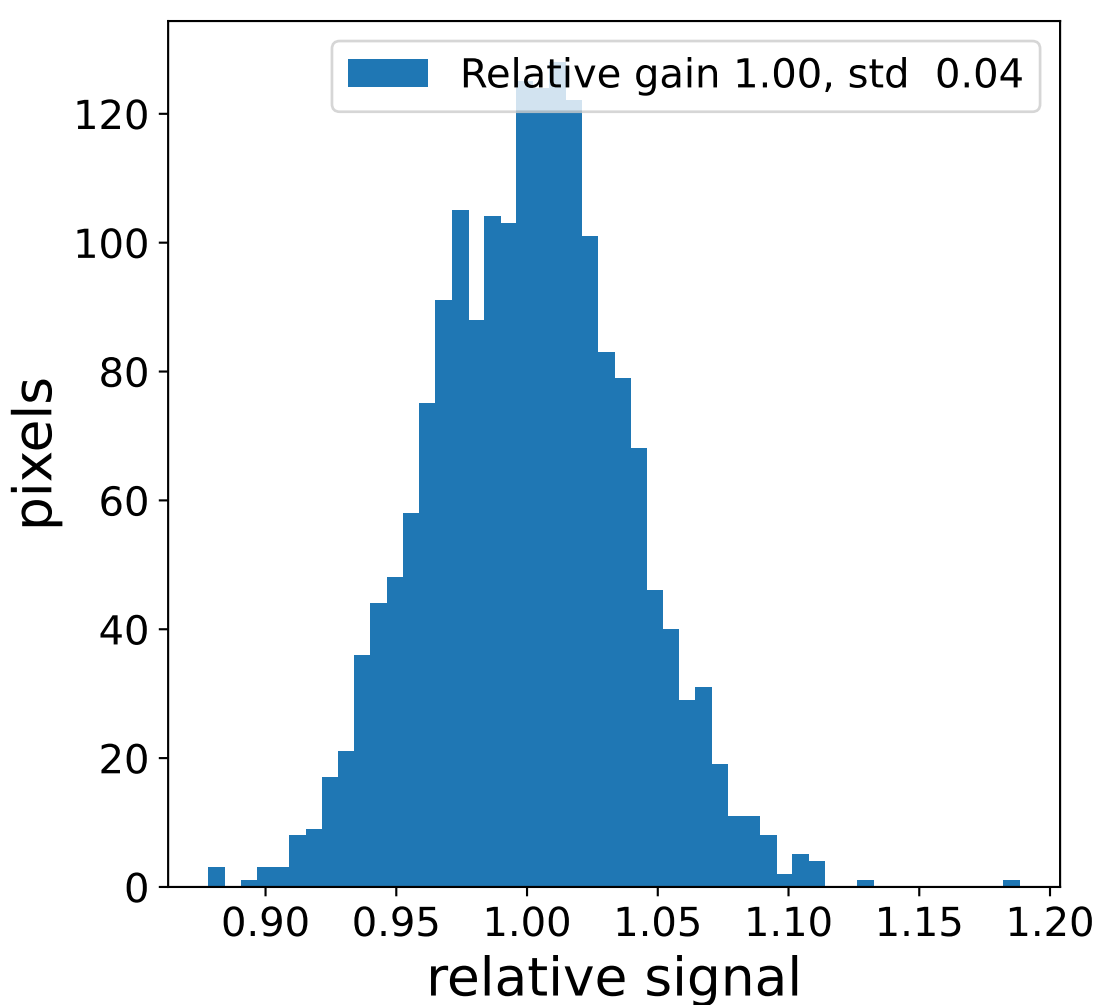
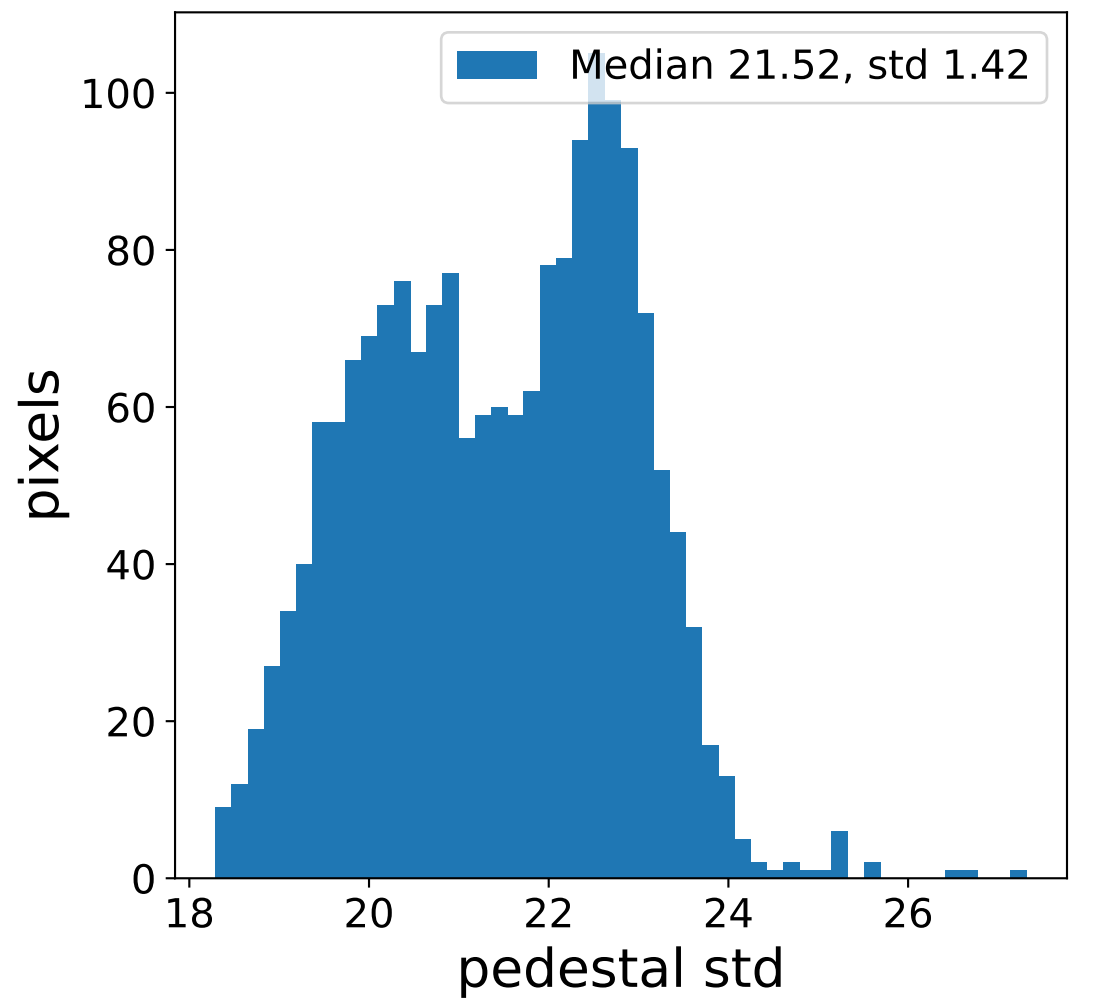
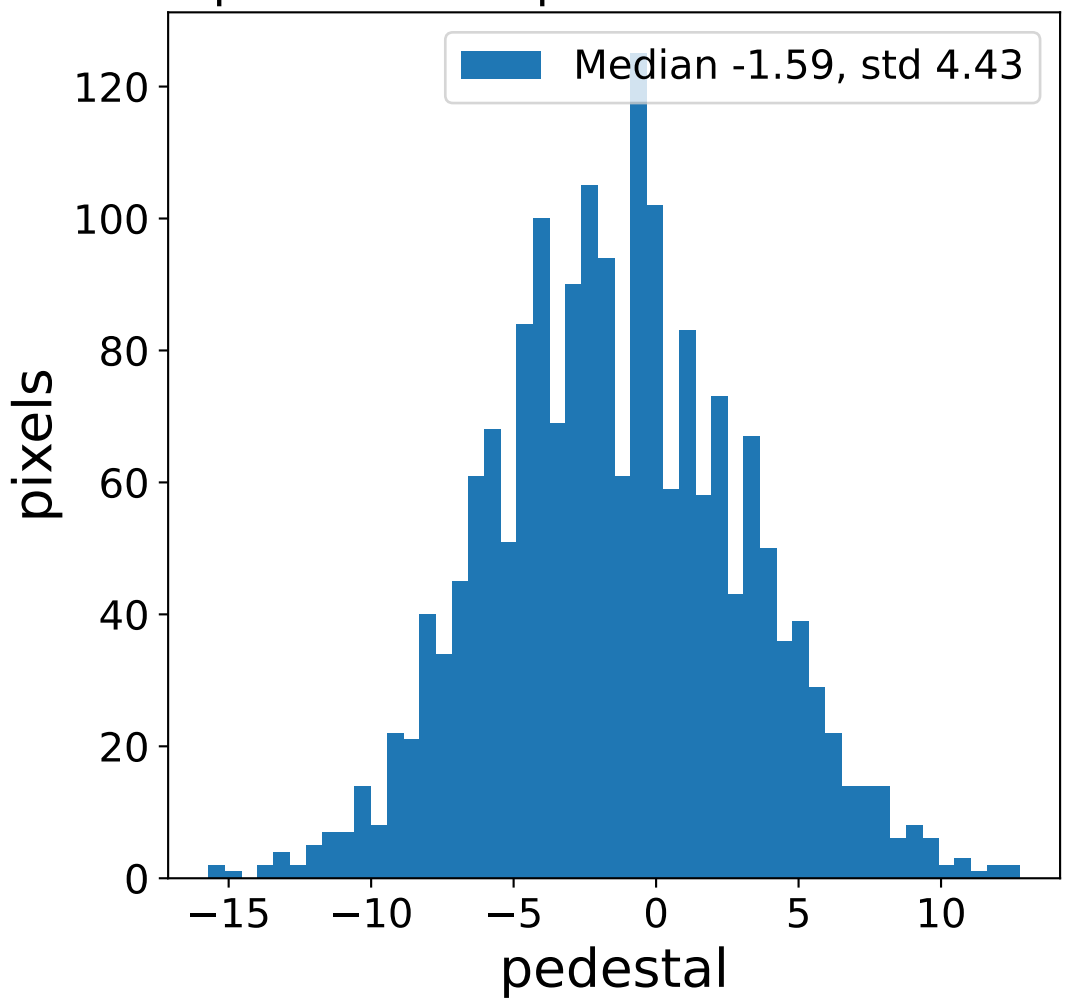


# Run 12551 channel: LG

## FF sample of 10000 events



## pedestal sample of 10000 events



## flat-fielded gain [ADC/pe]

