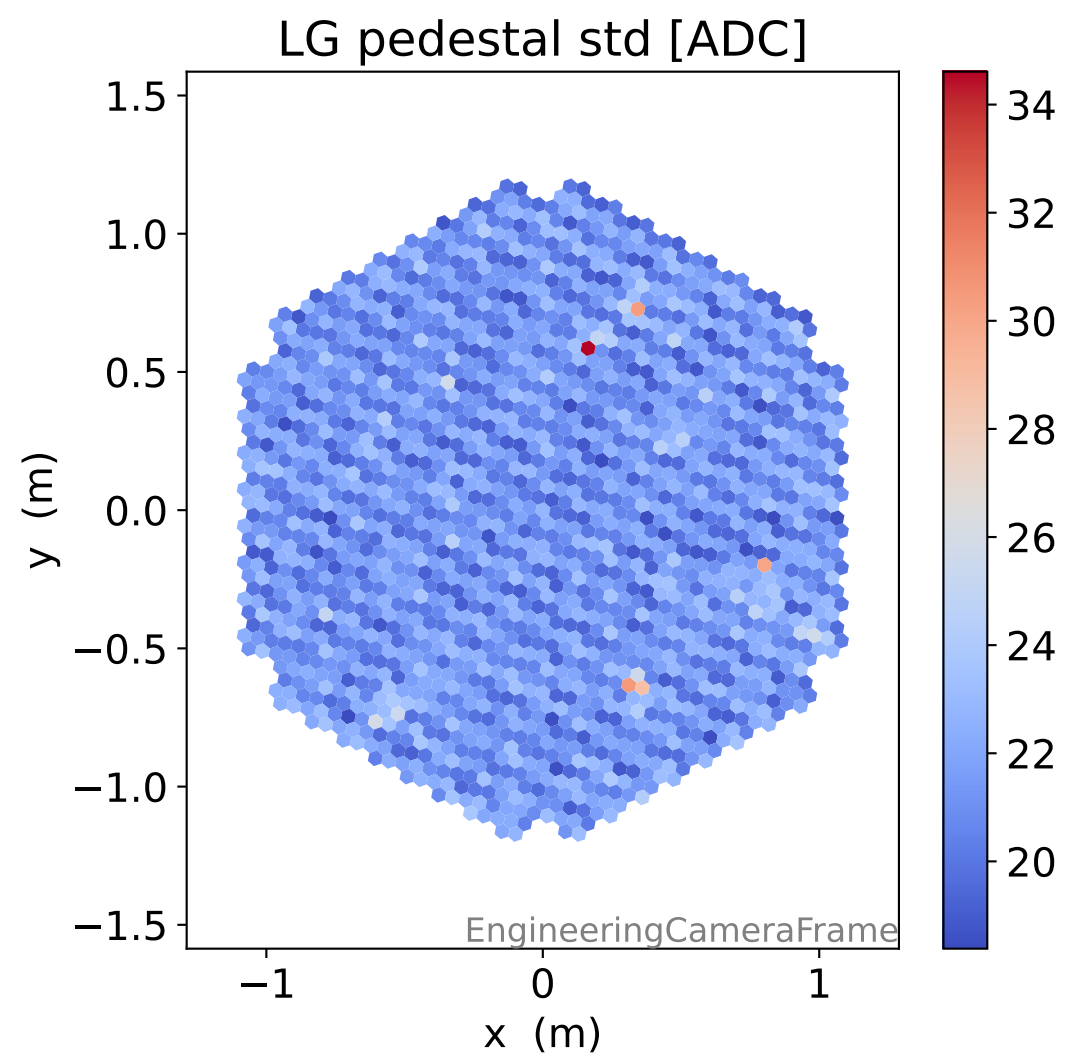
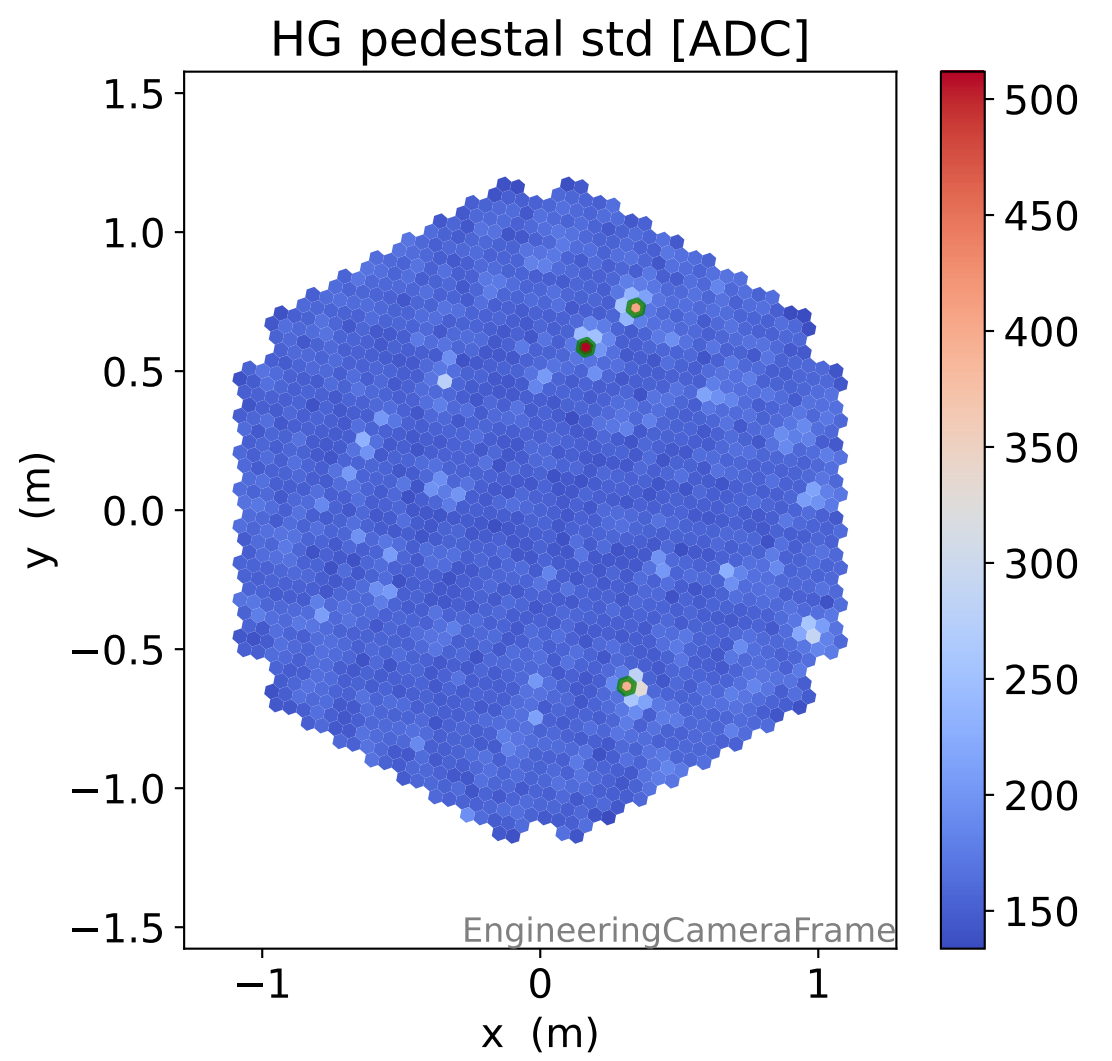
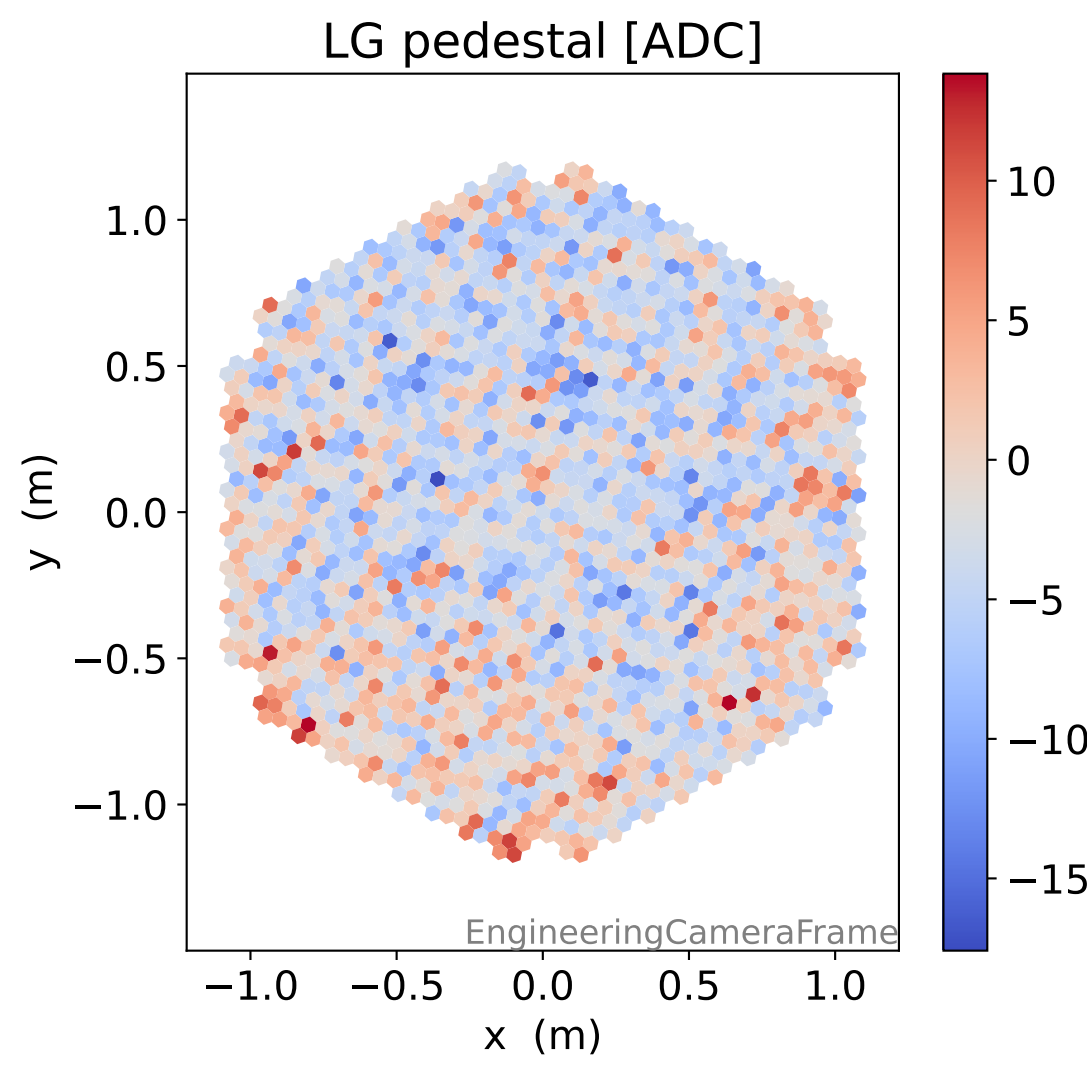
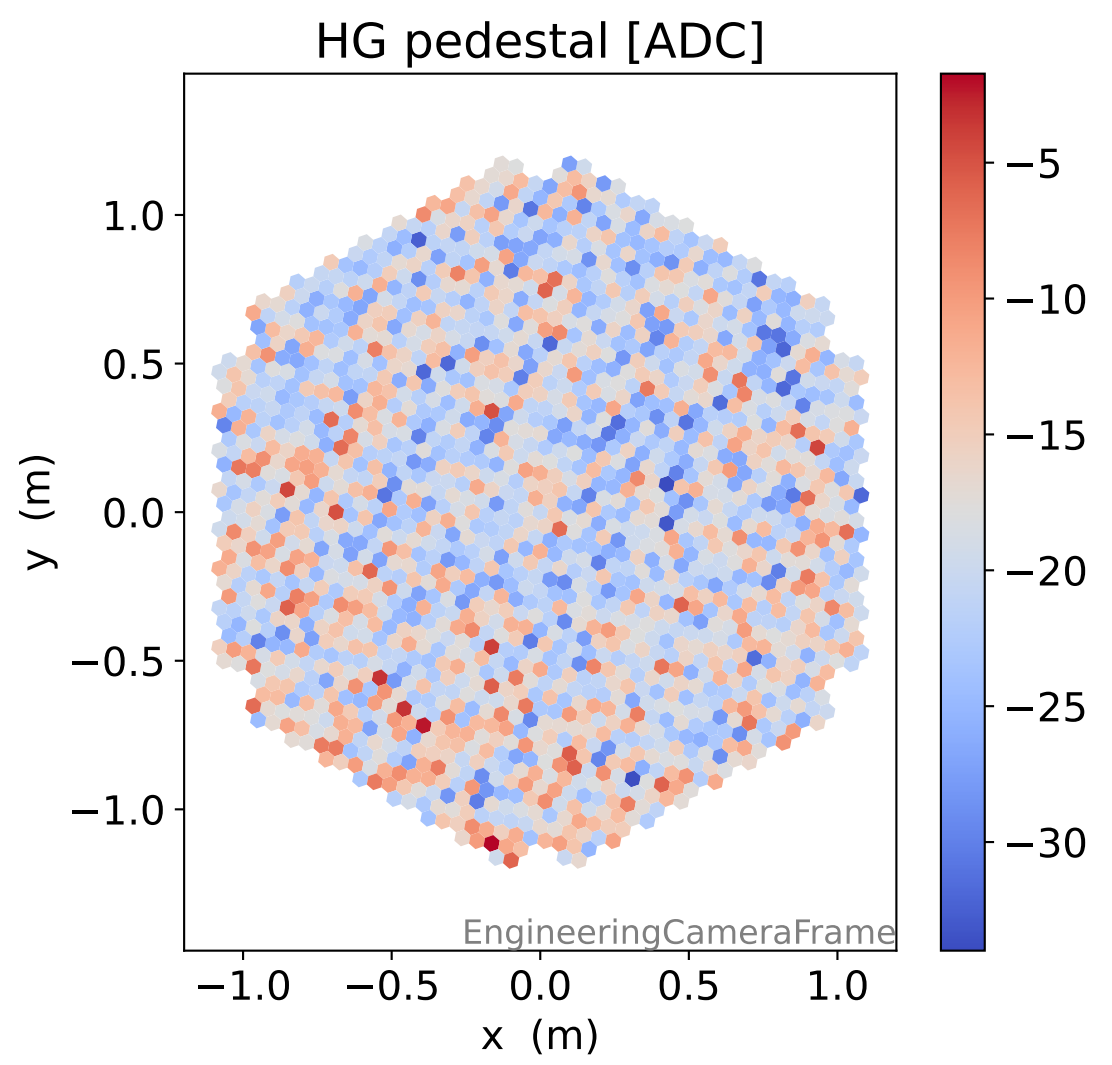
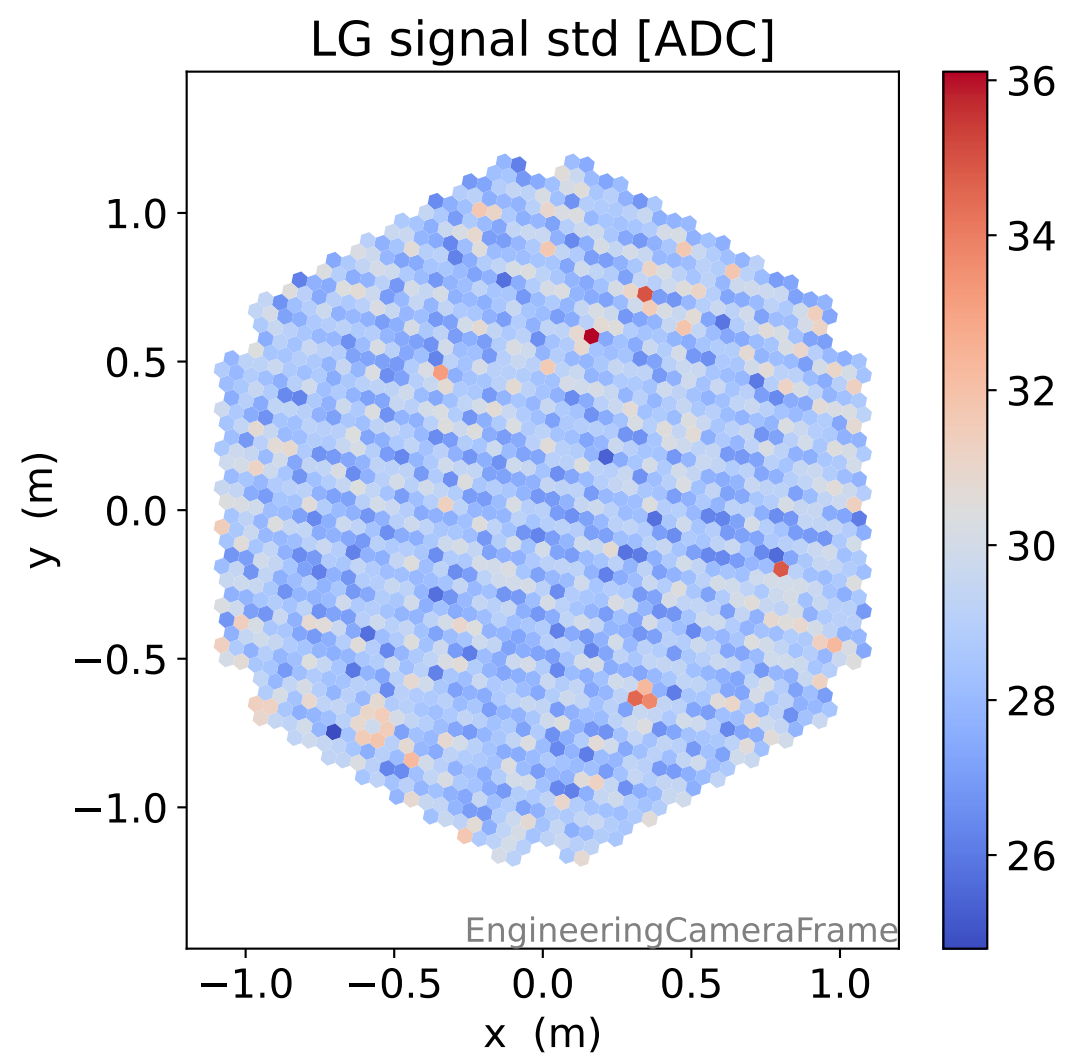
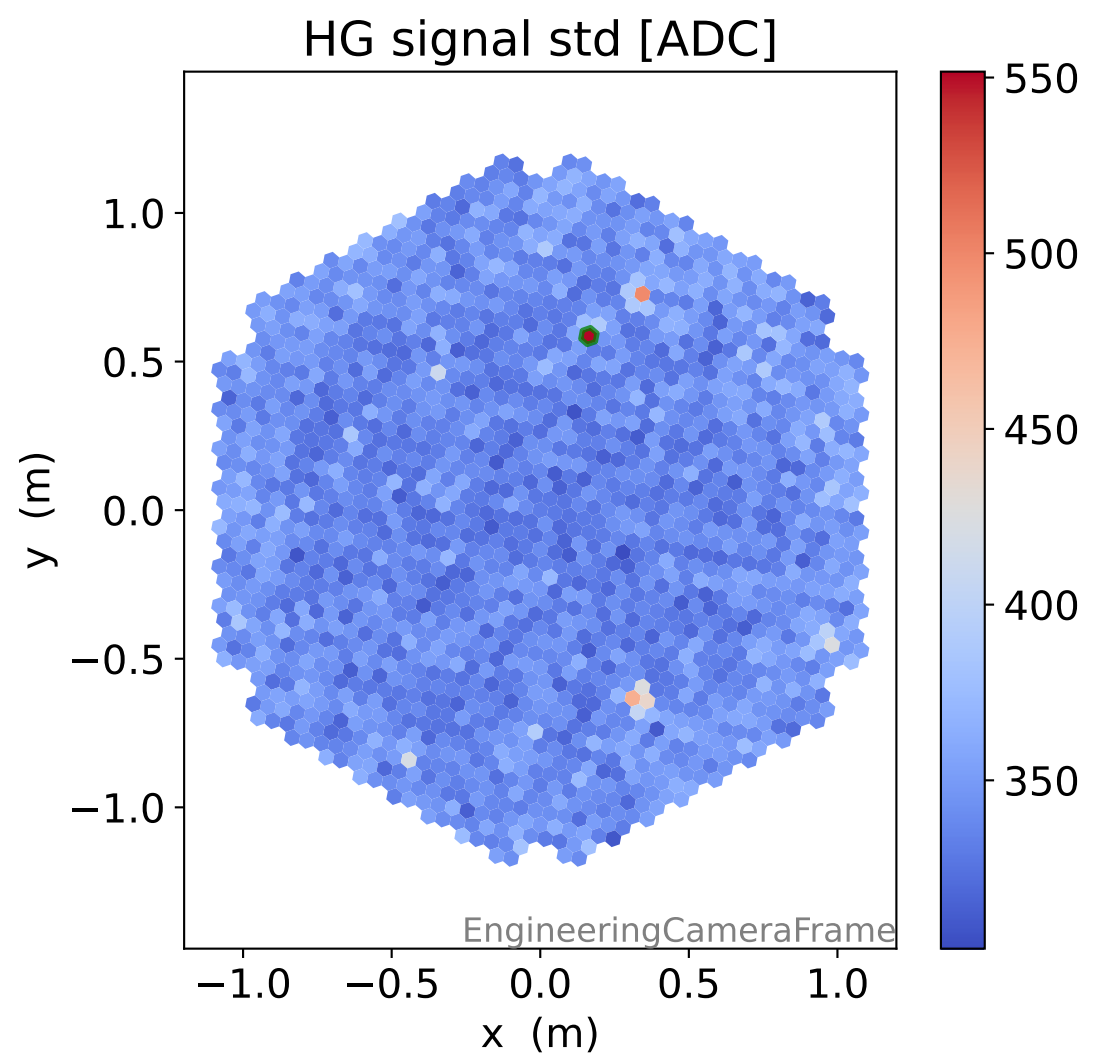
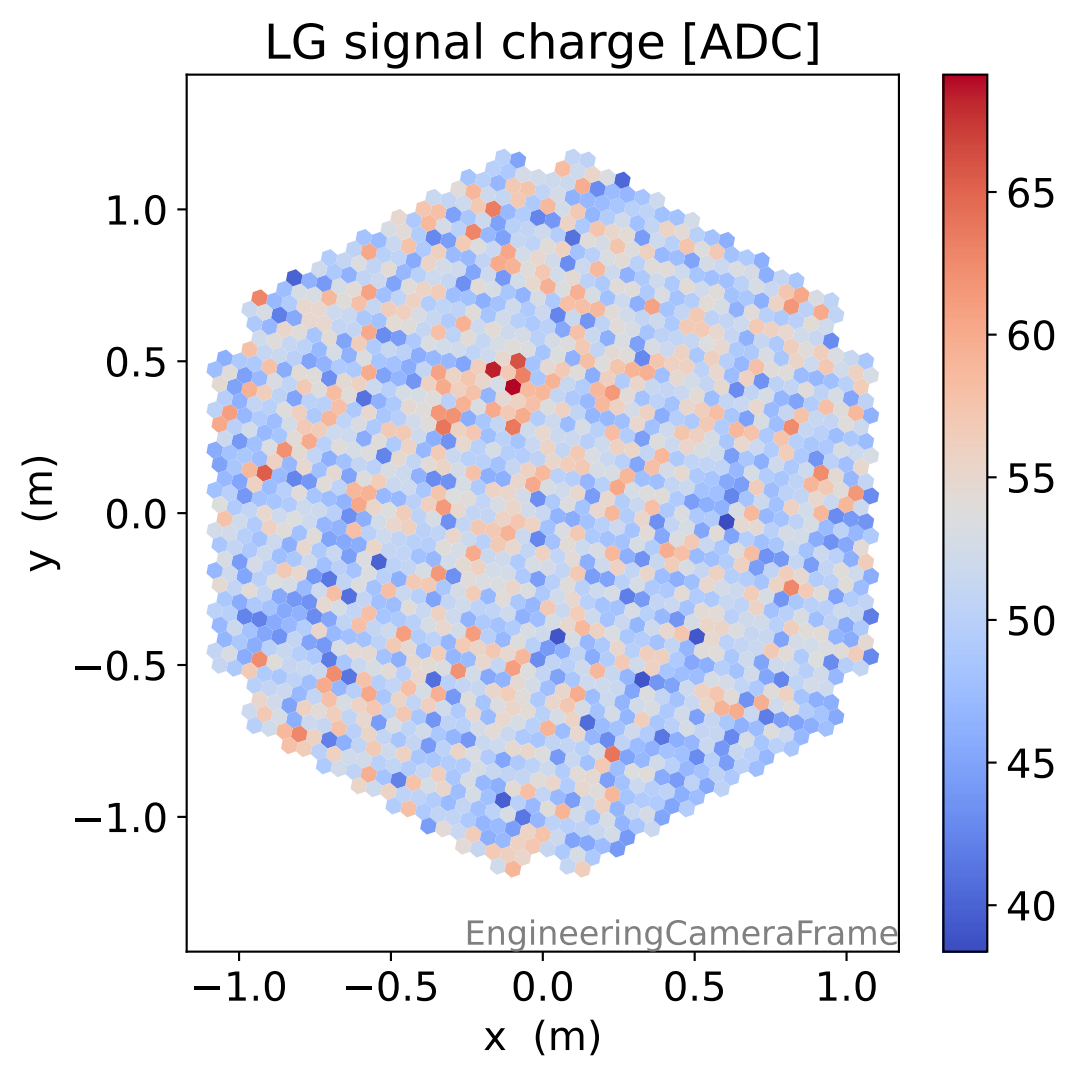
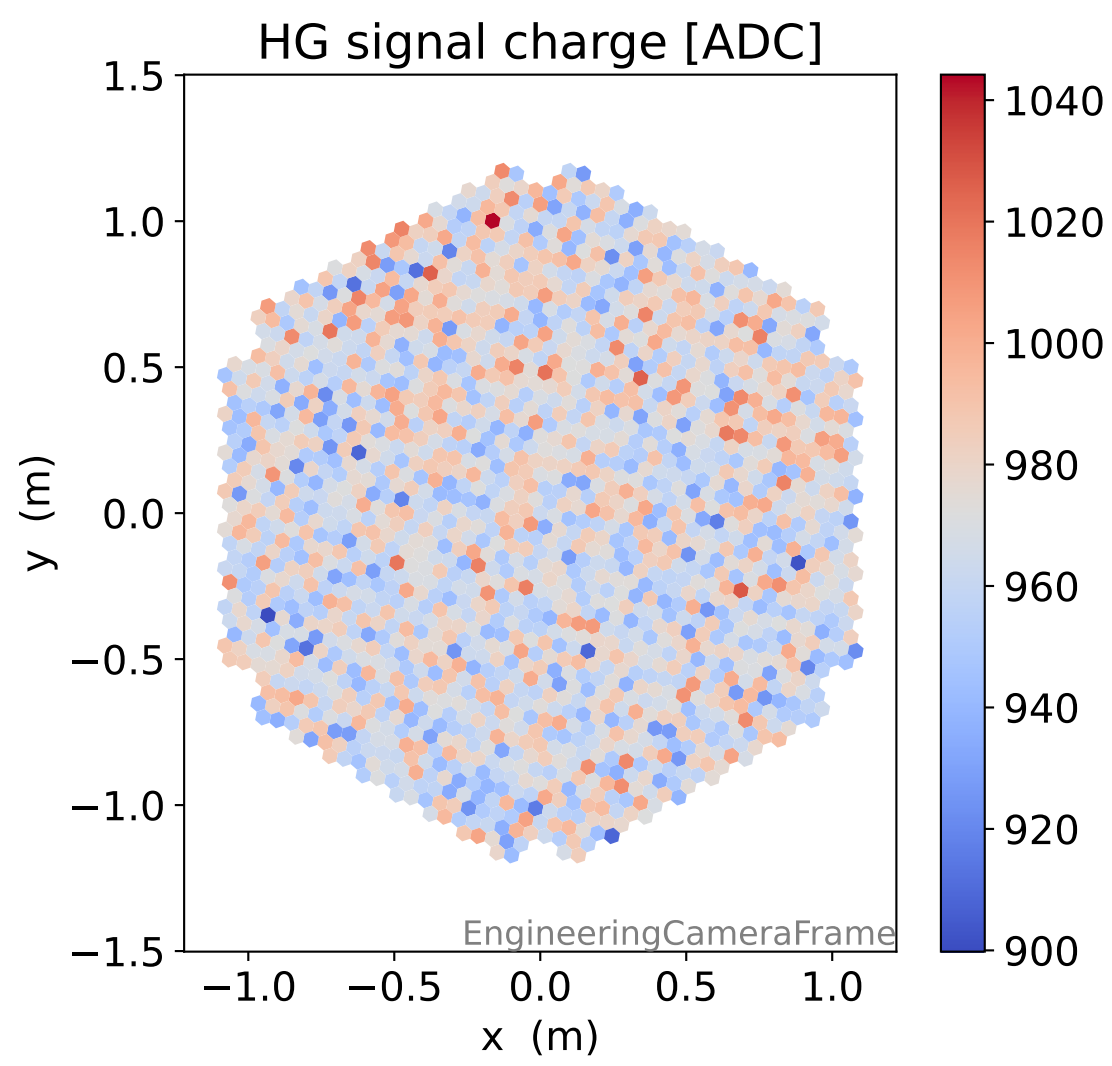
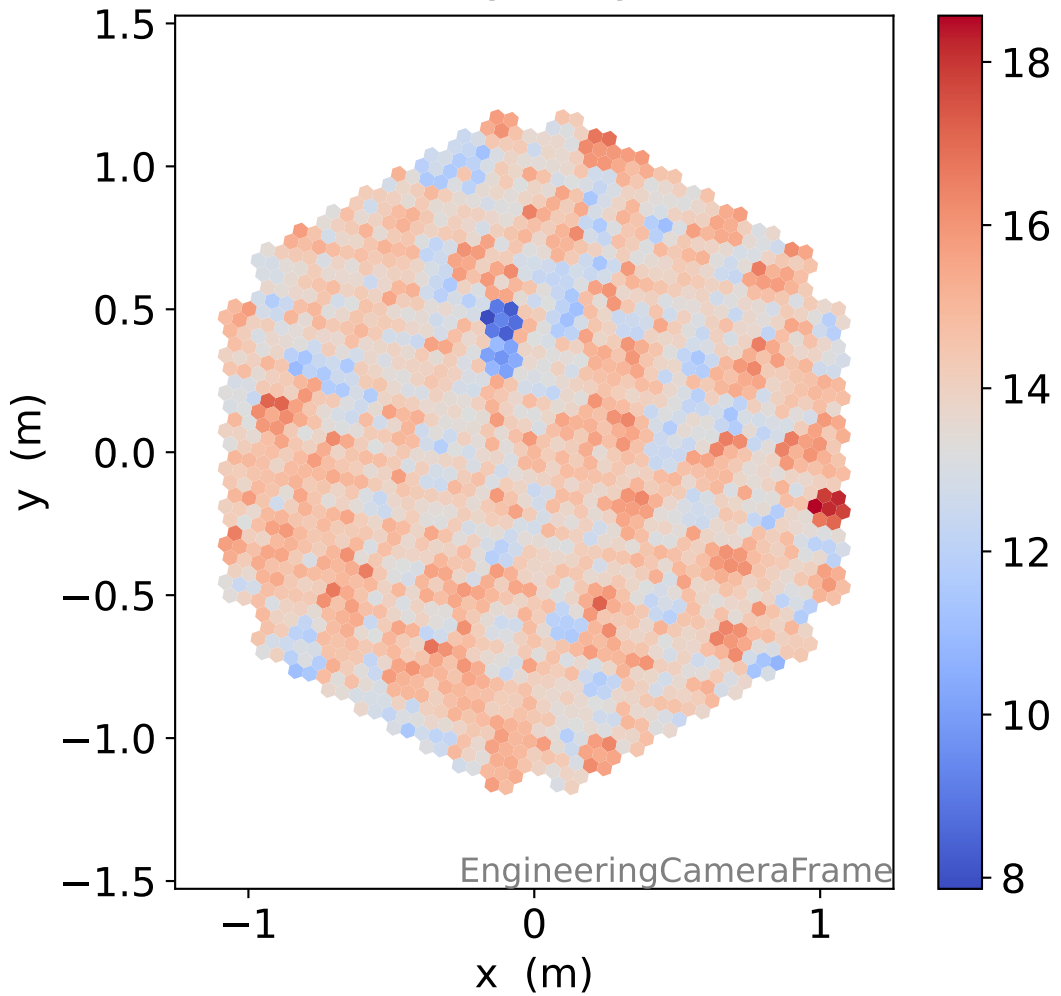


# Run 8934

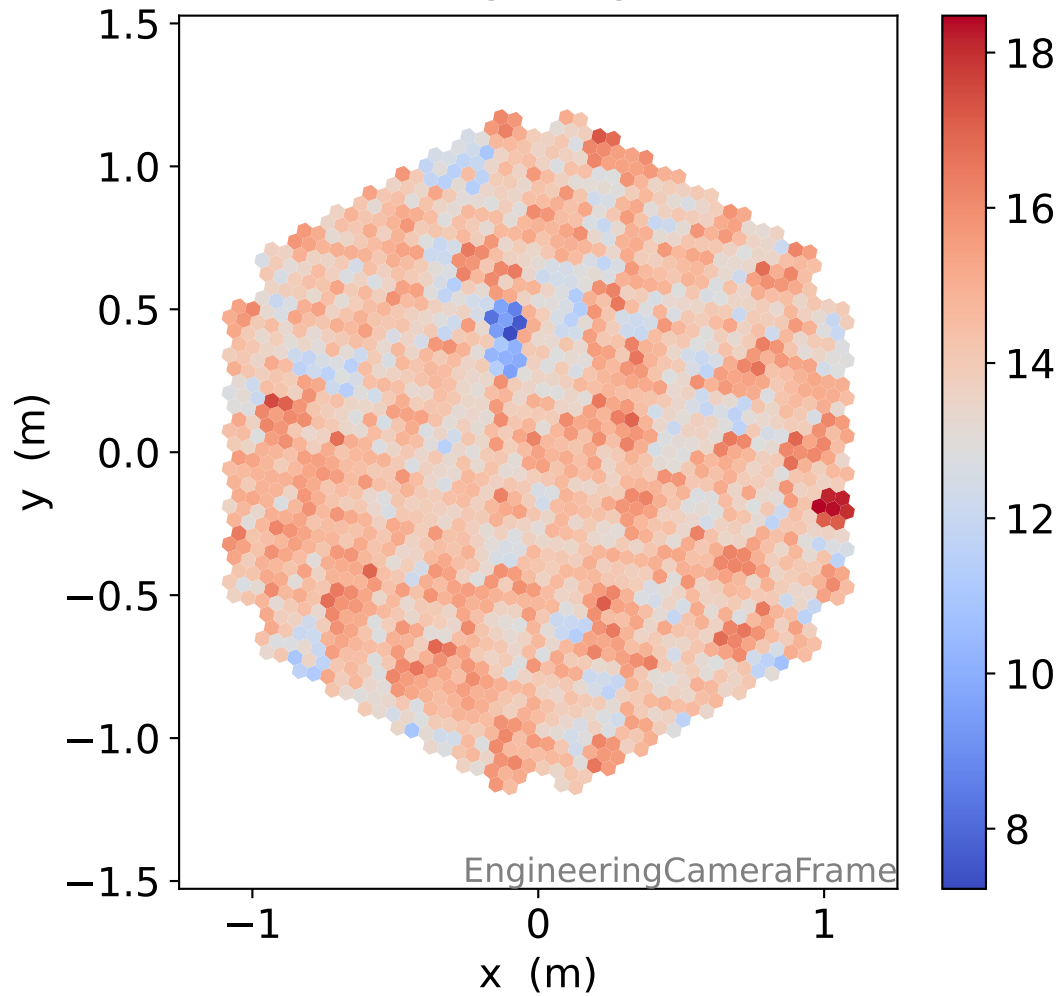


# Run 8934

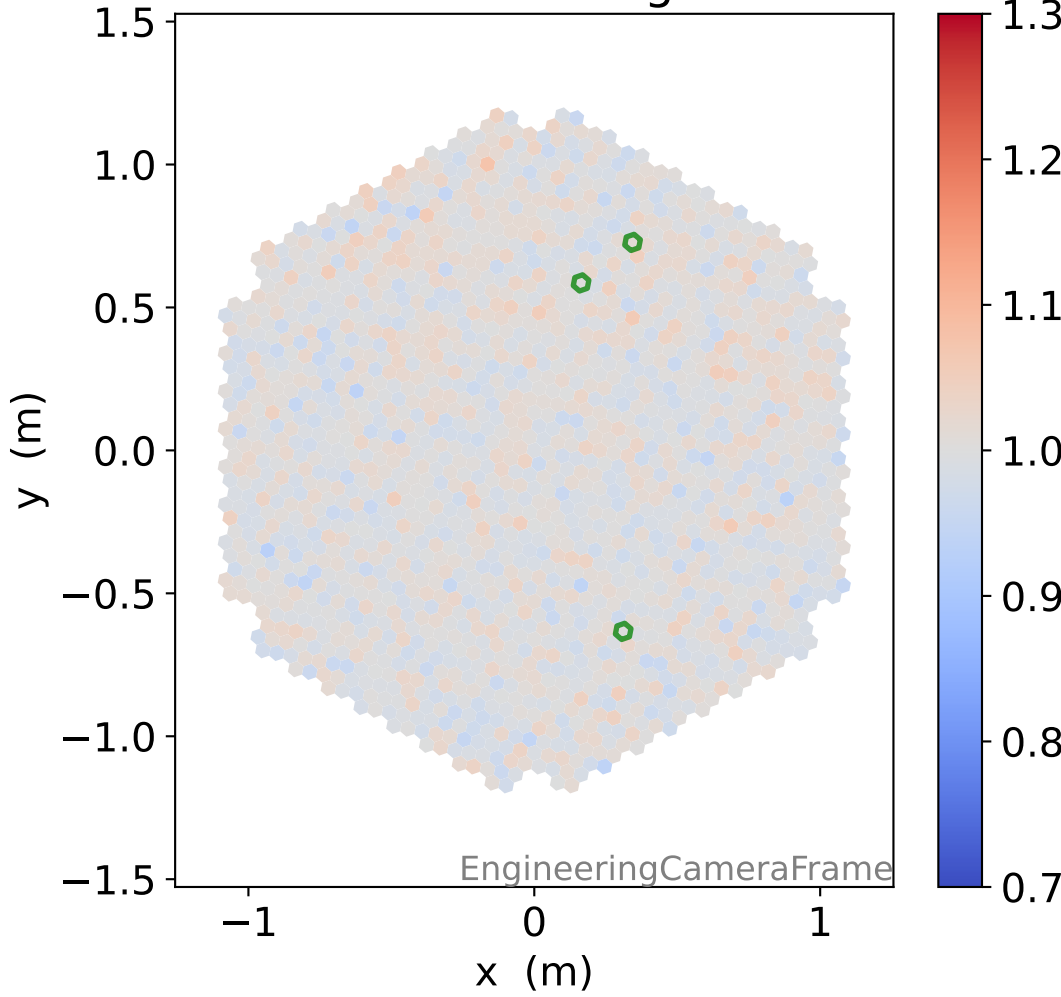
### HG time



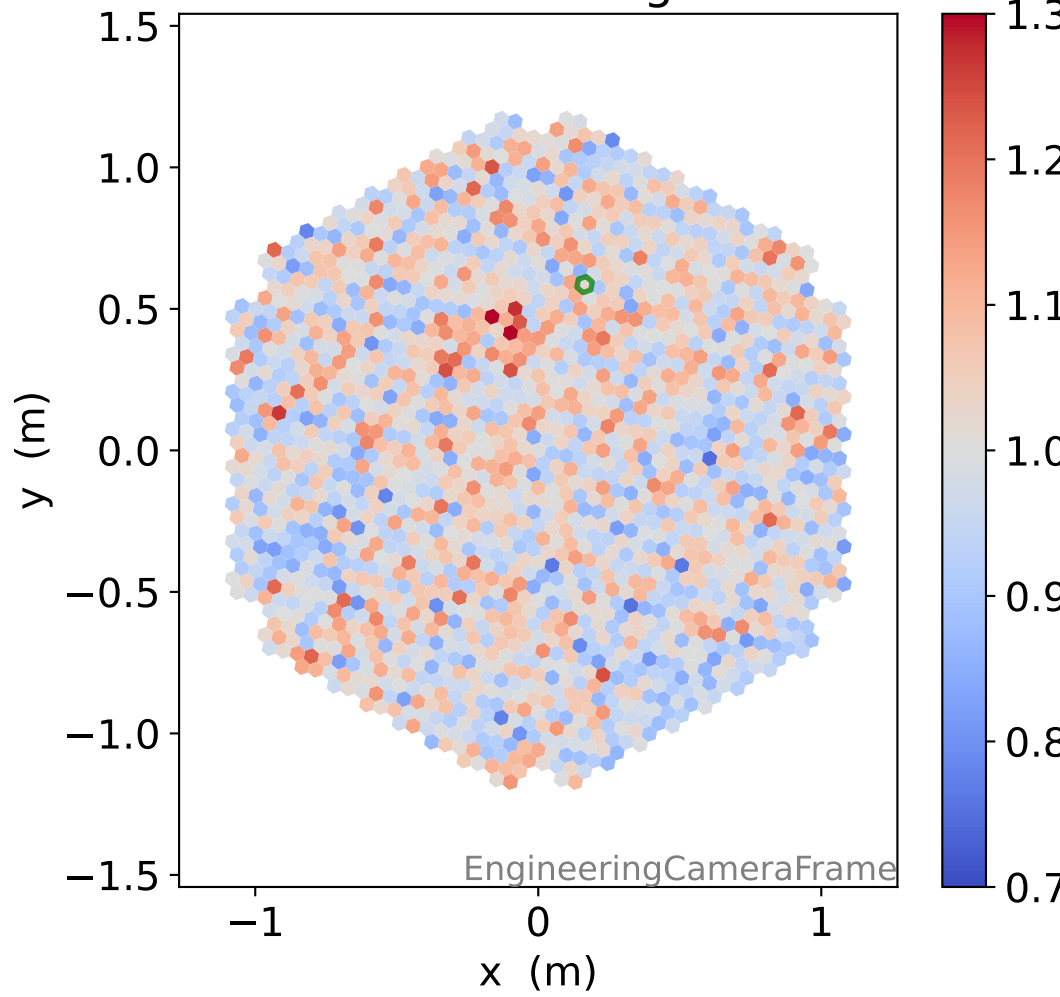
### LG time



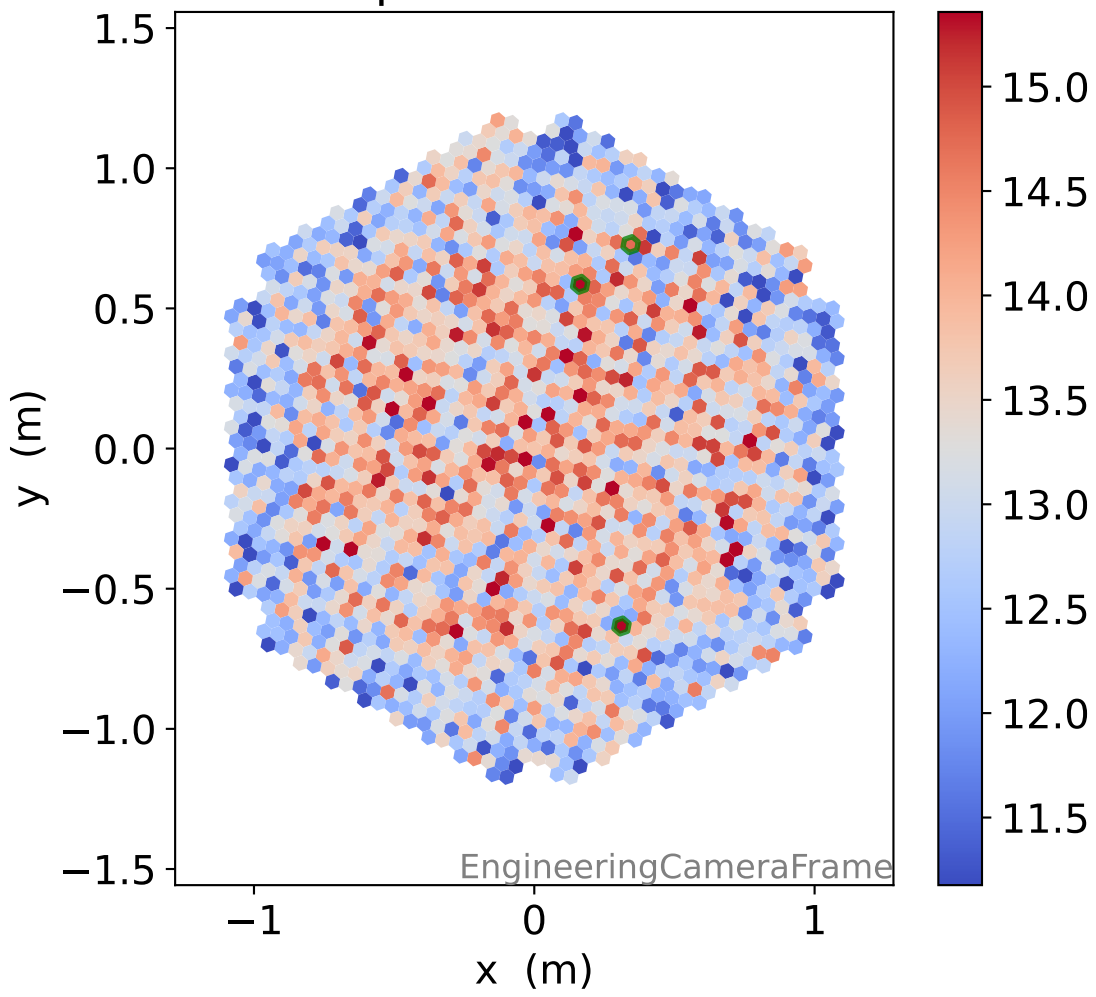
### HG relative signal



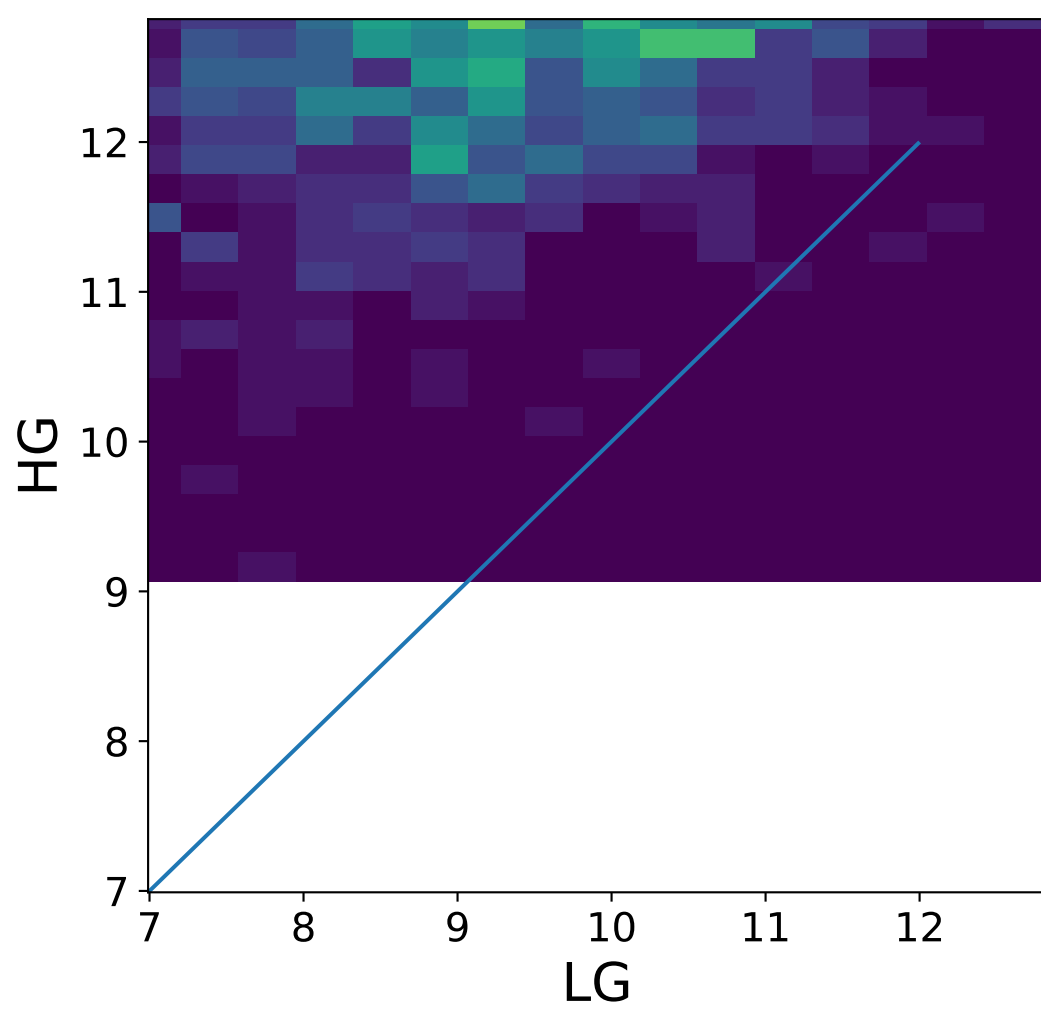
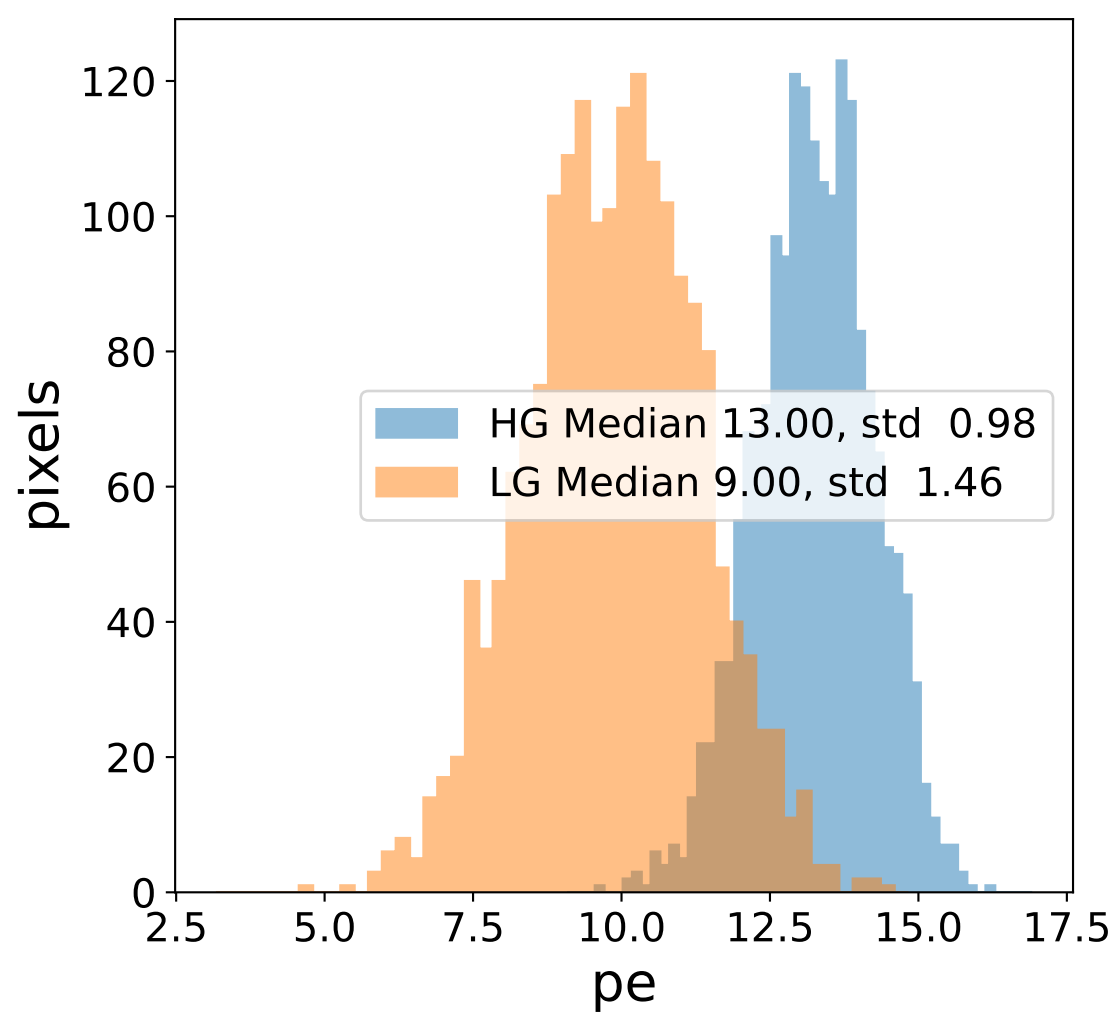
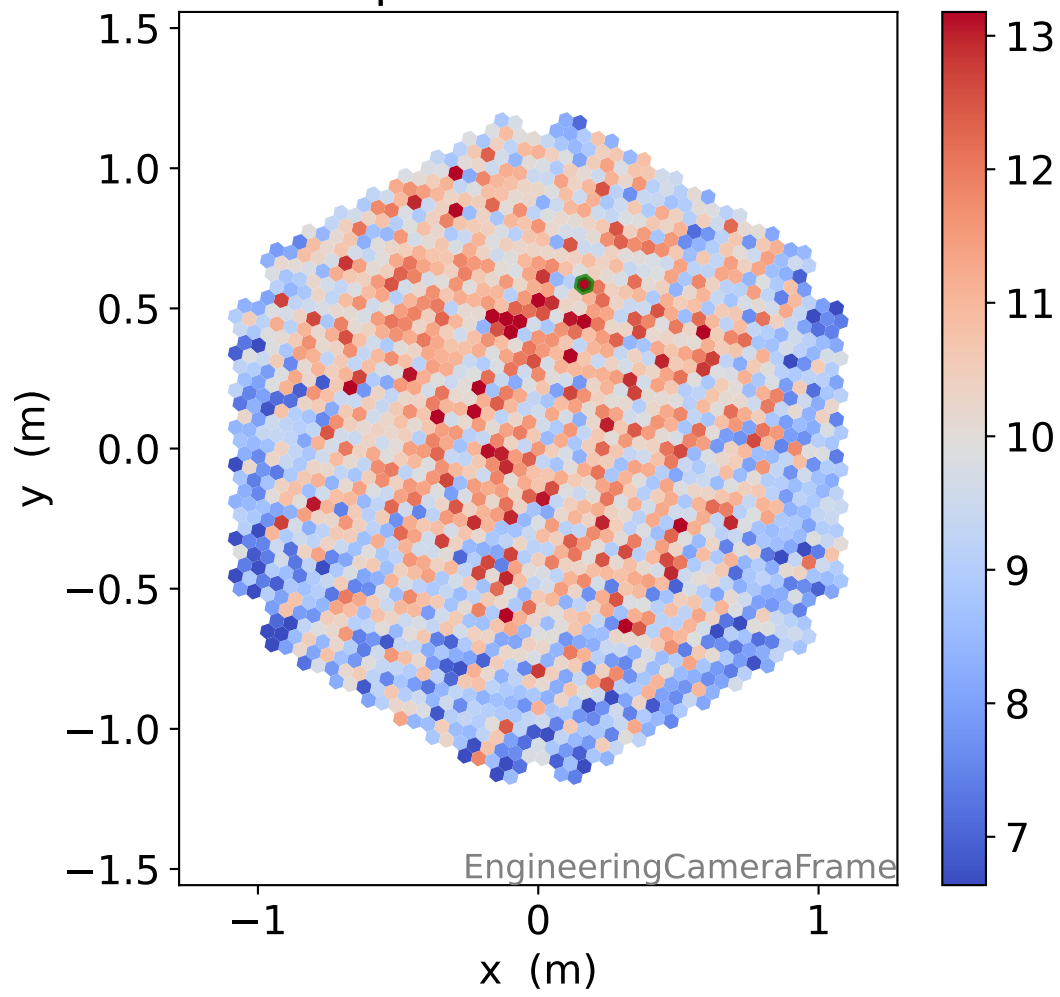
### LG relative signal



### HG photon-electrons

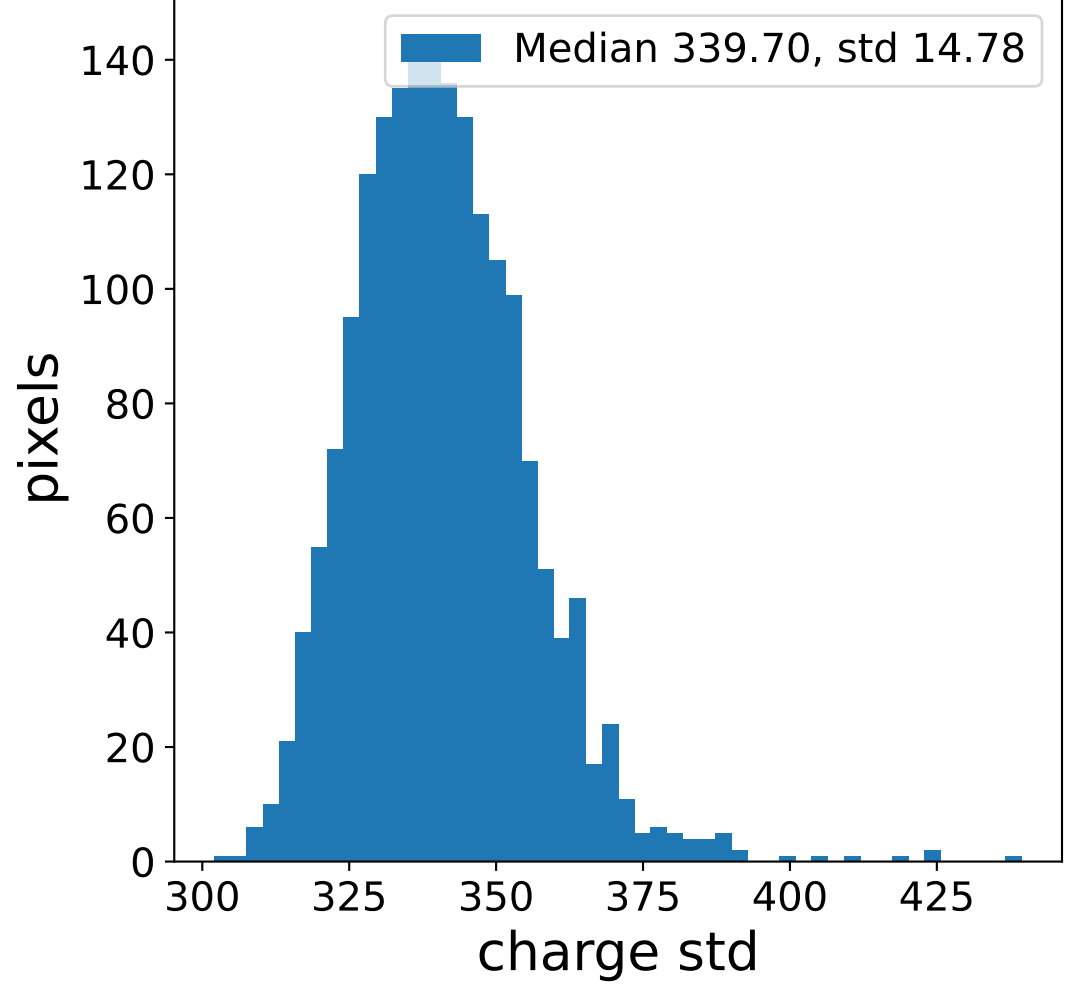
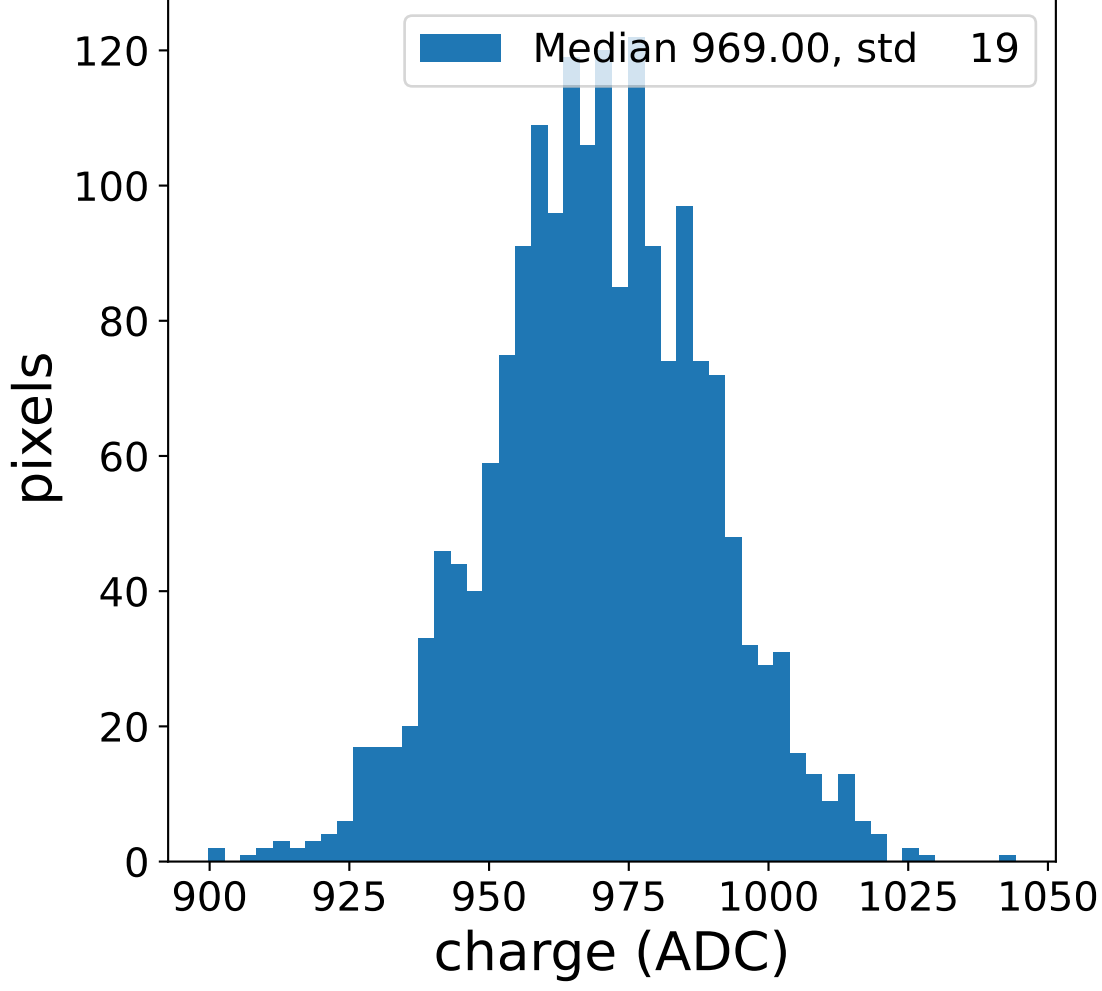


### LG photon-electrons

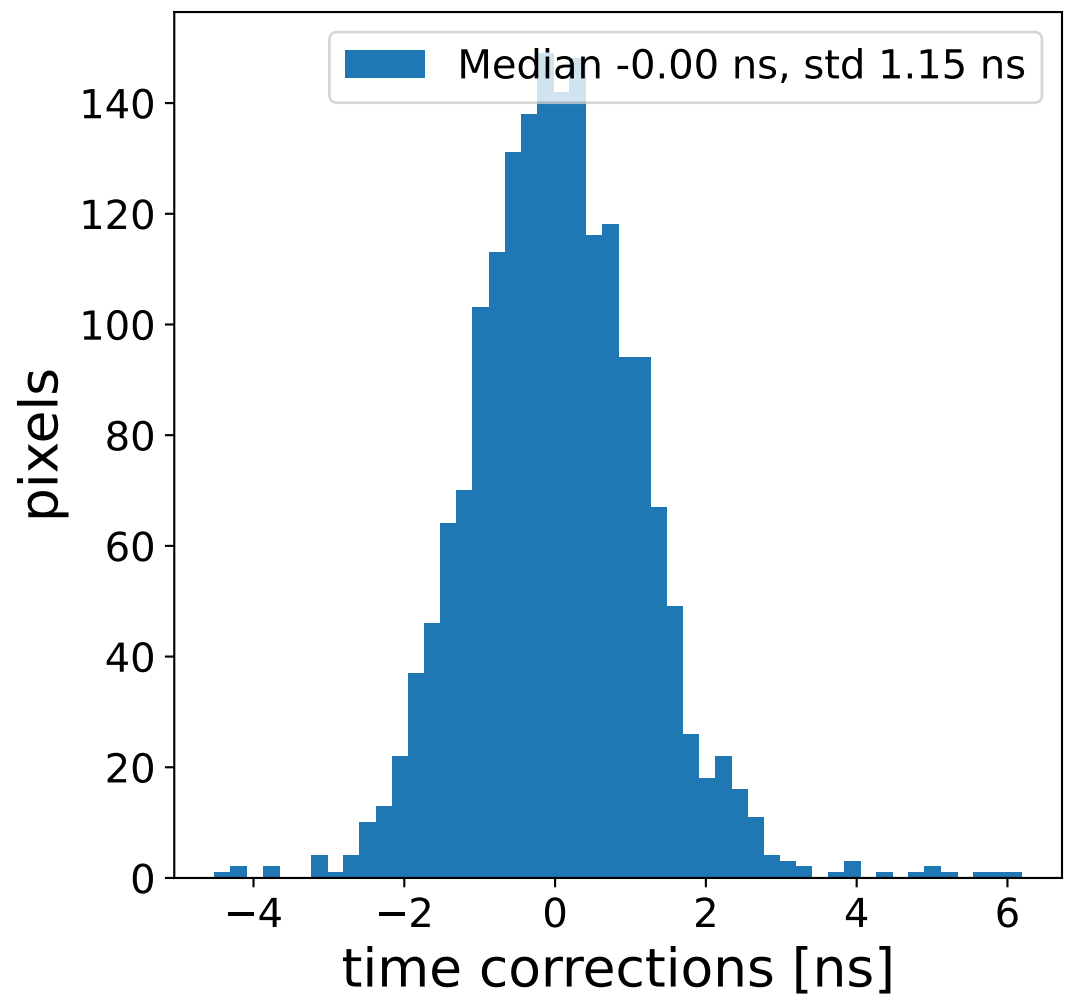
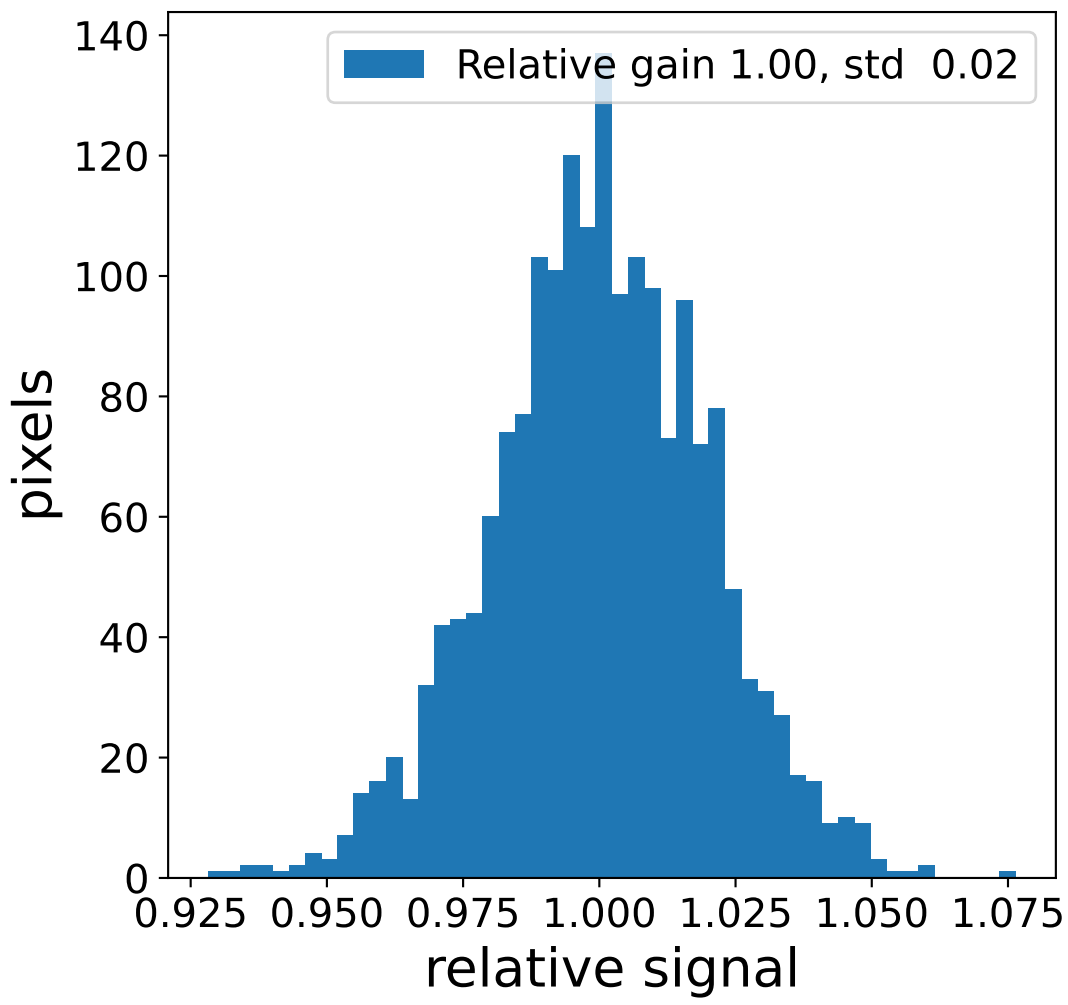
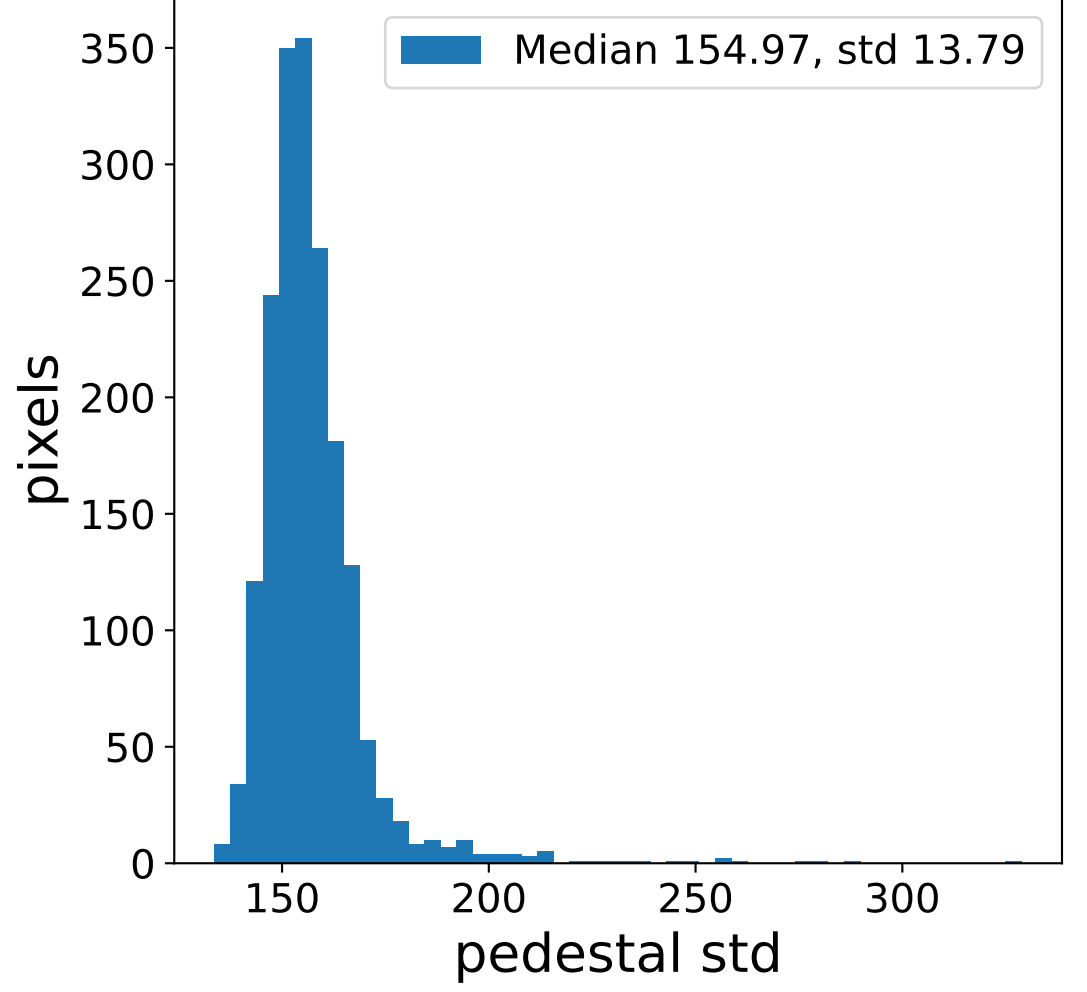
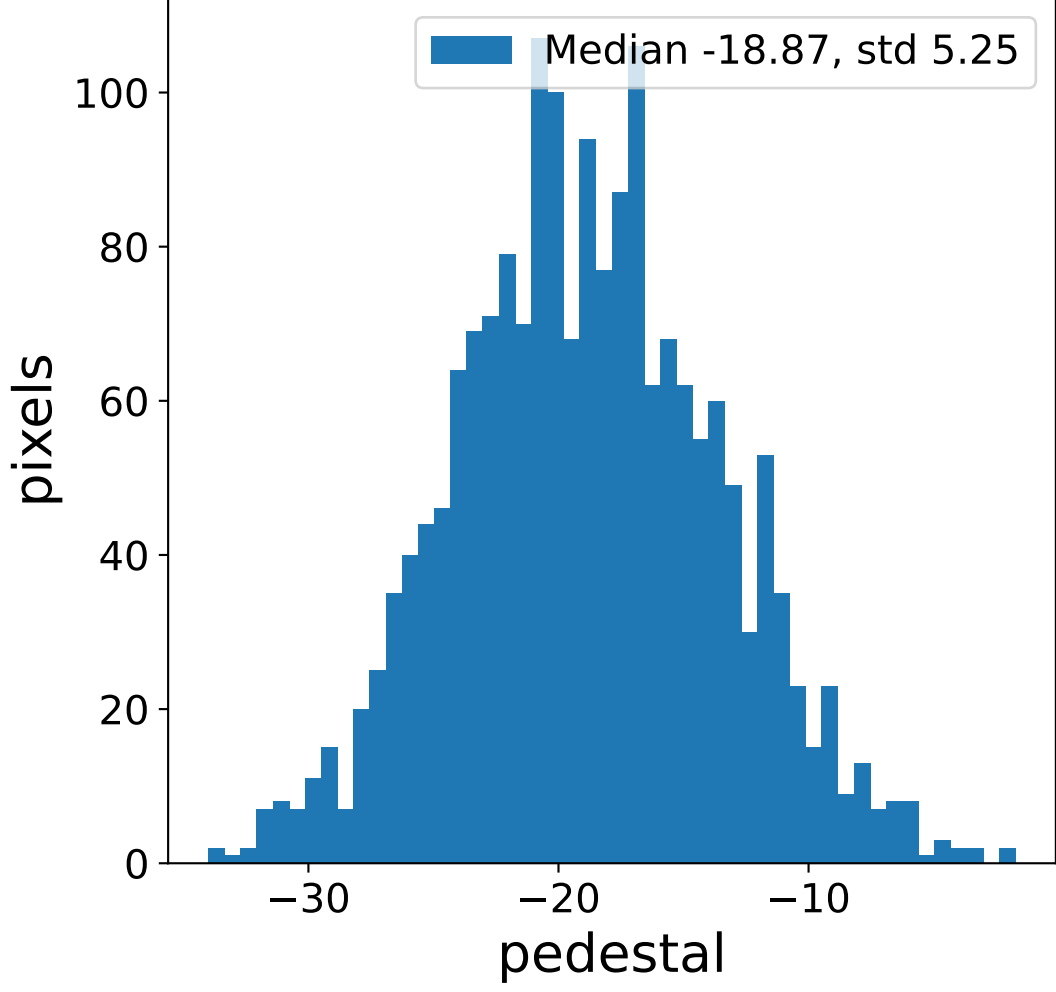


# Run 8934 channel: HG

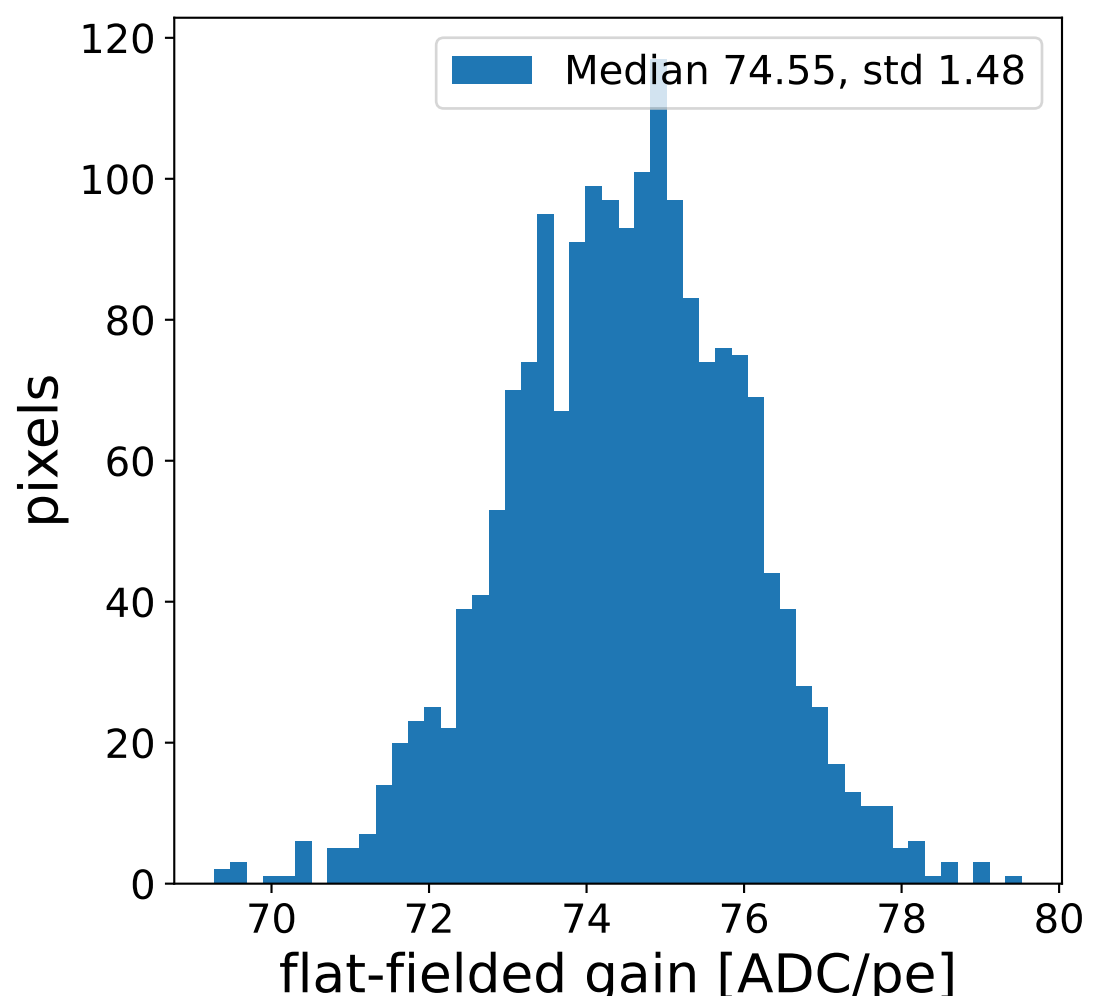
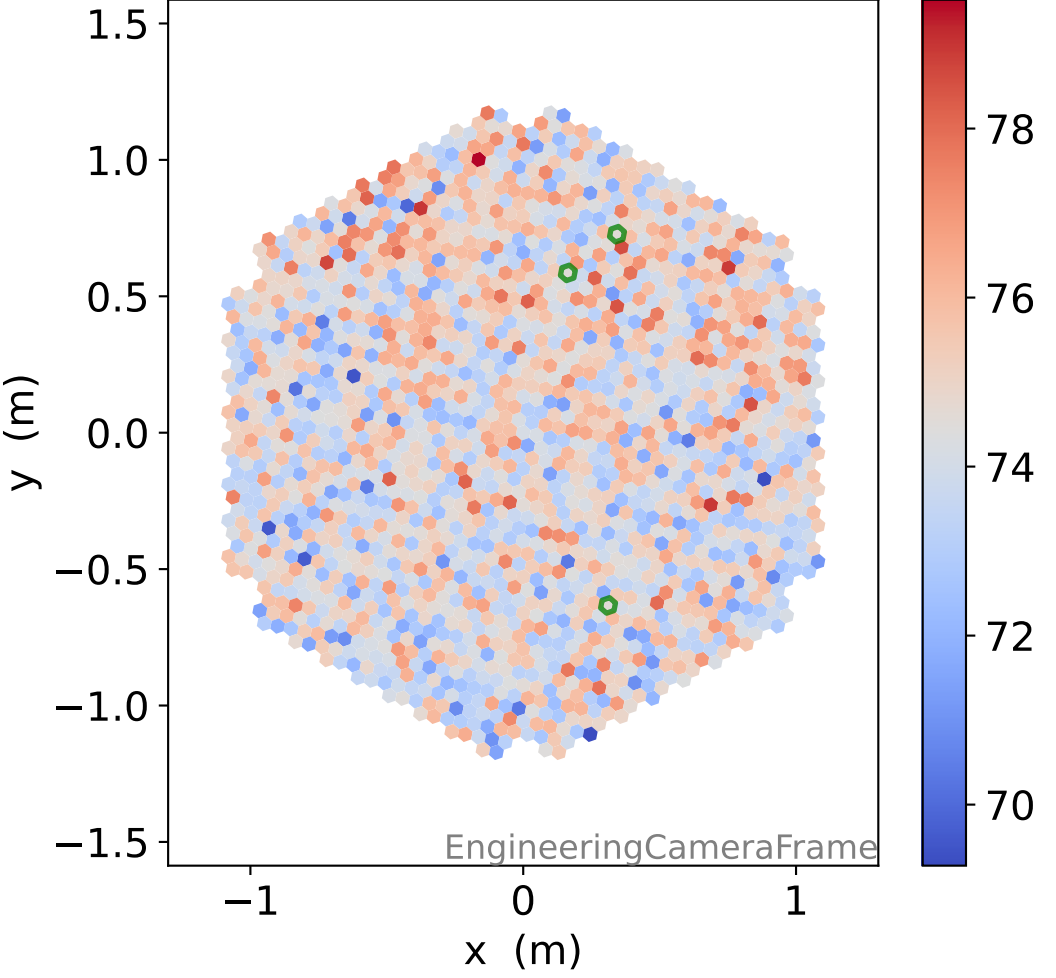
## FF sample of 10000 events



## pedestal sample of 10000 events

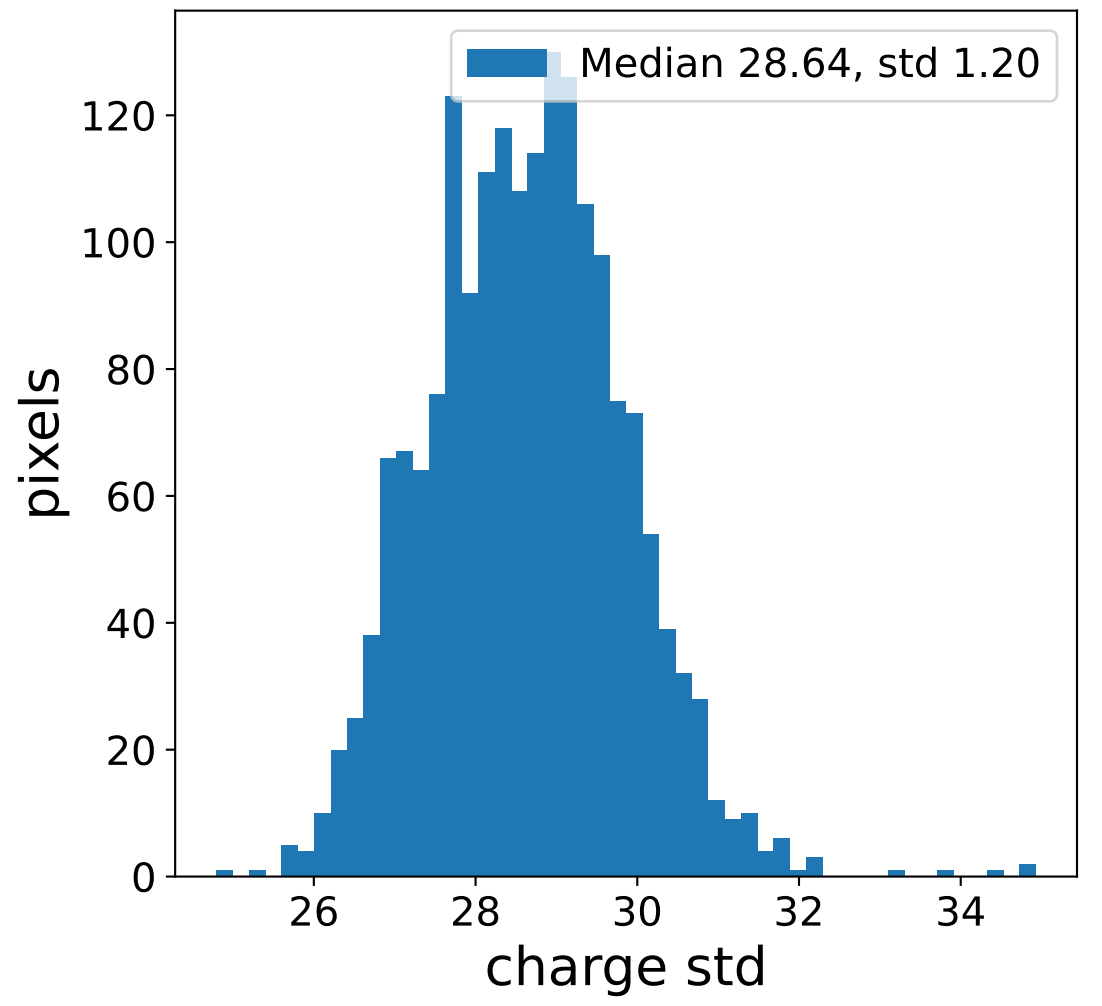
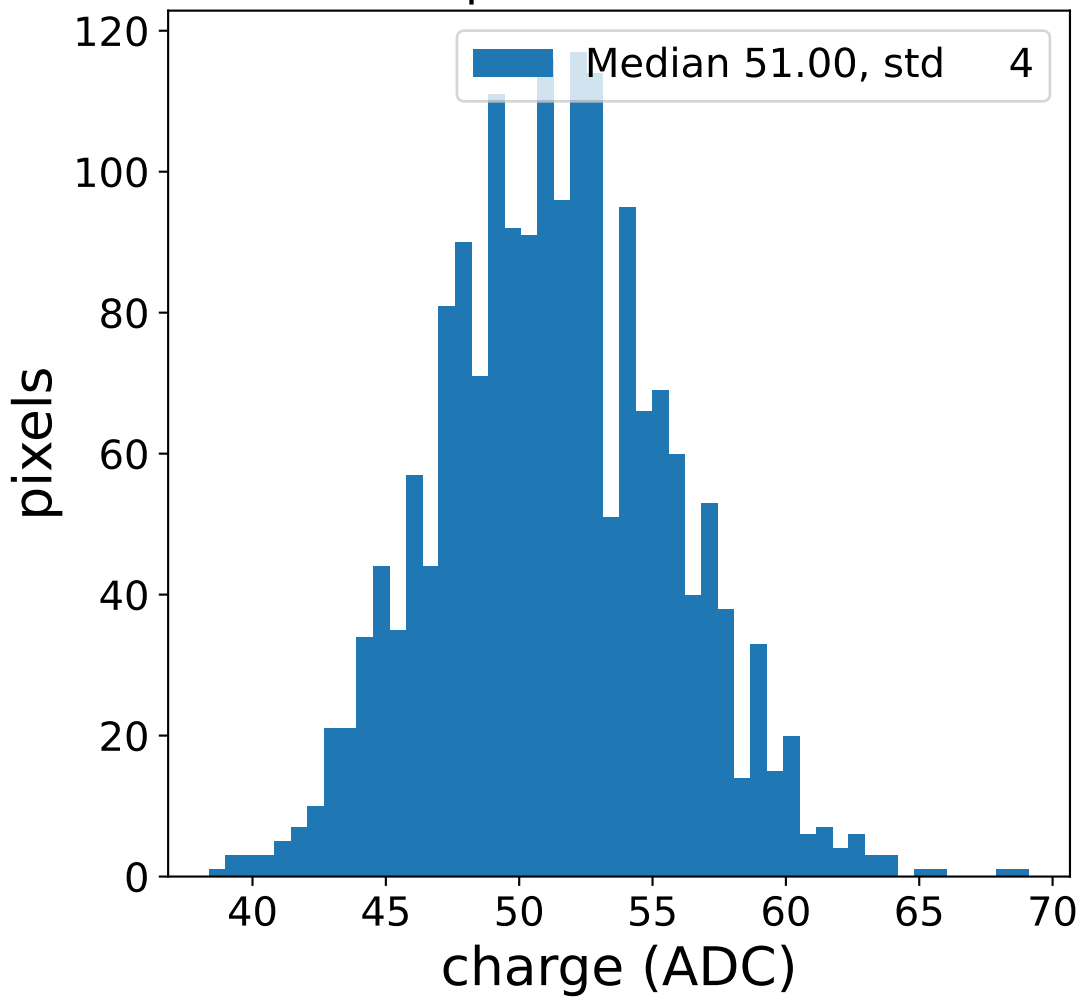


## flat-fielded gain [ADC/pe]

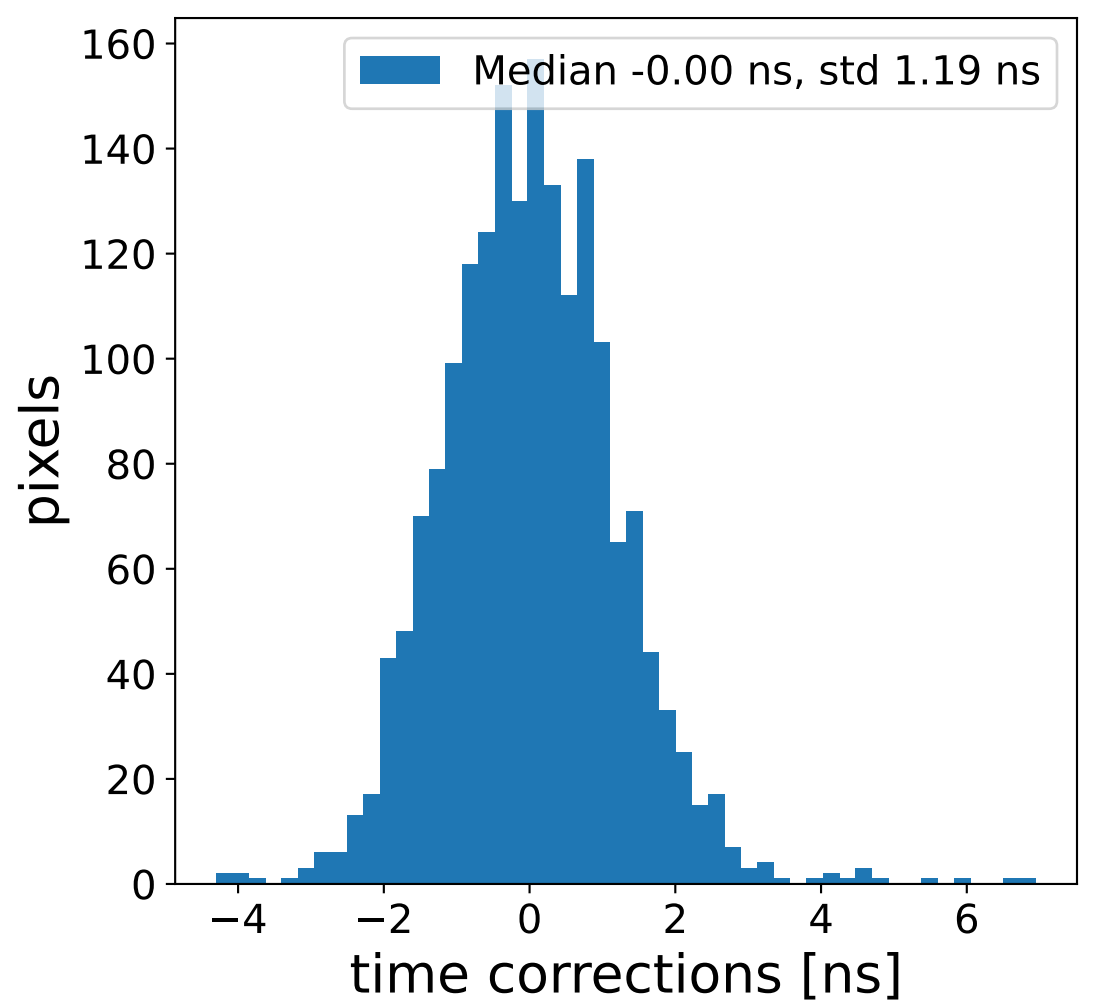
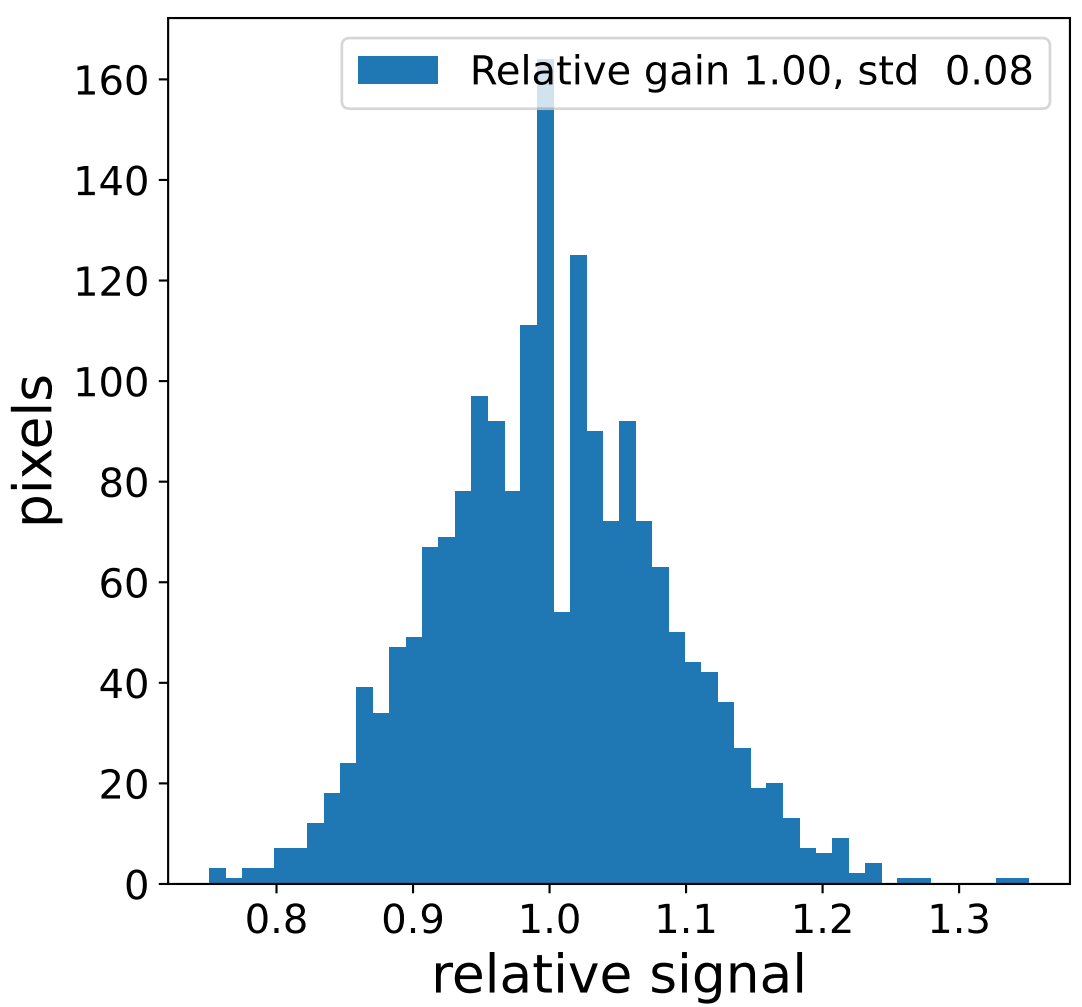
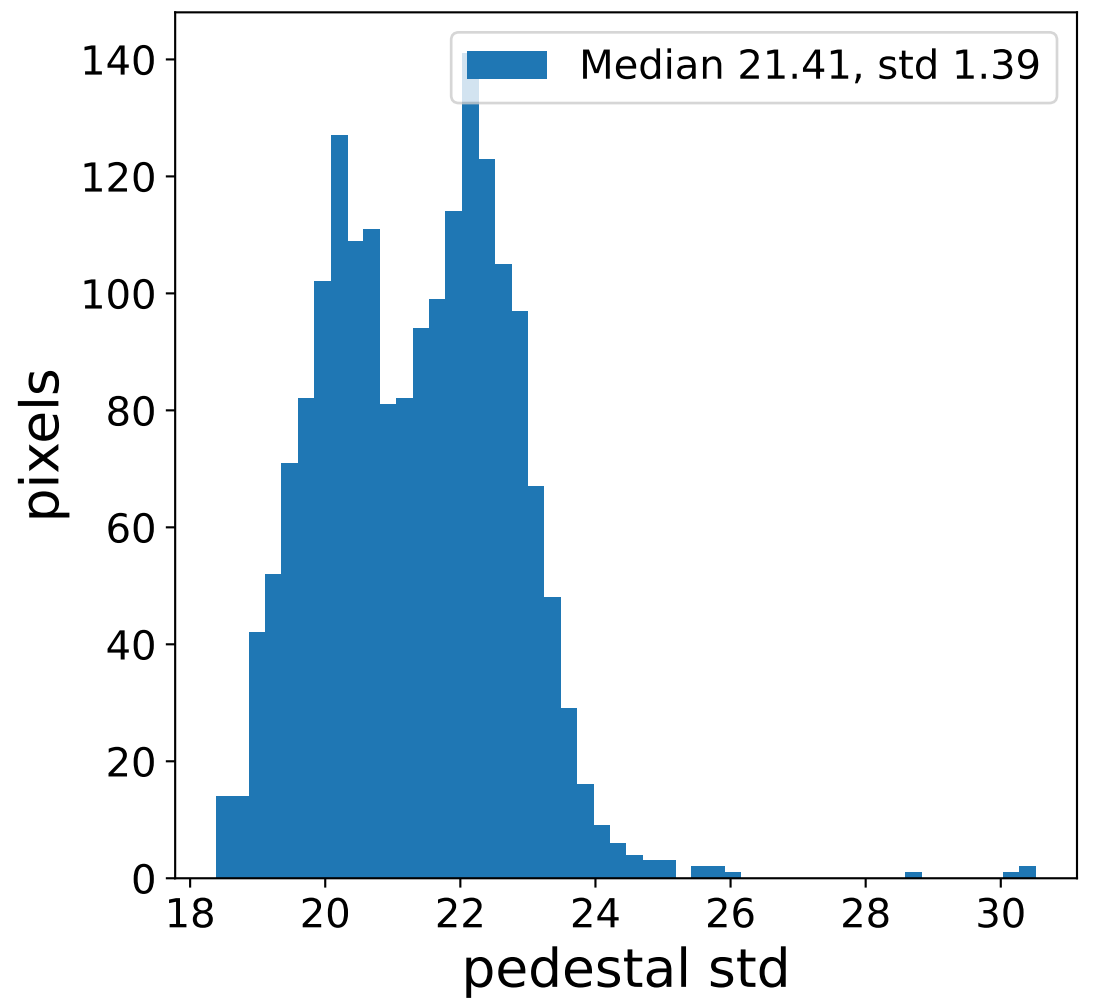
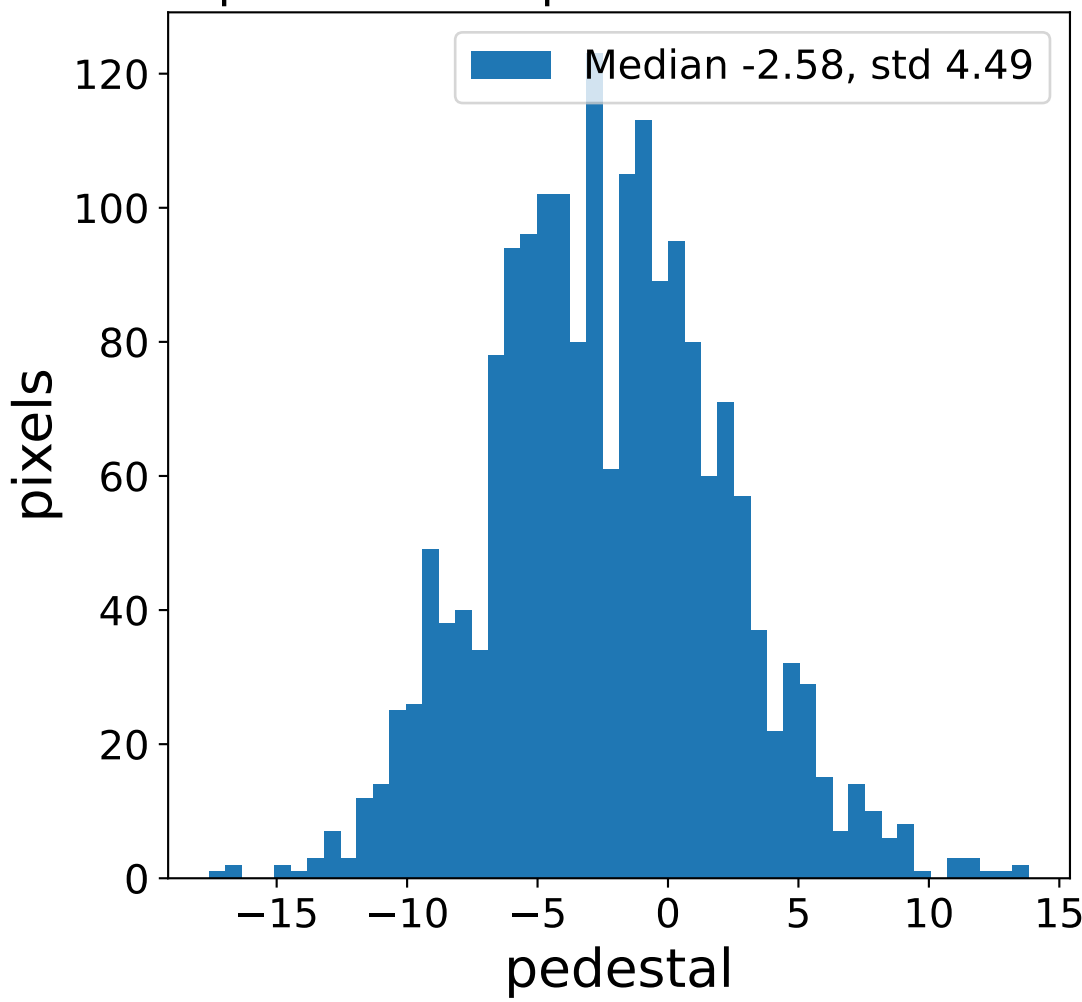


# Run 8934 channel: LG

### FF sample of 10000 events



### pedestal sample of 10000 events



### flat-fielded gain [ADC/pe]

