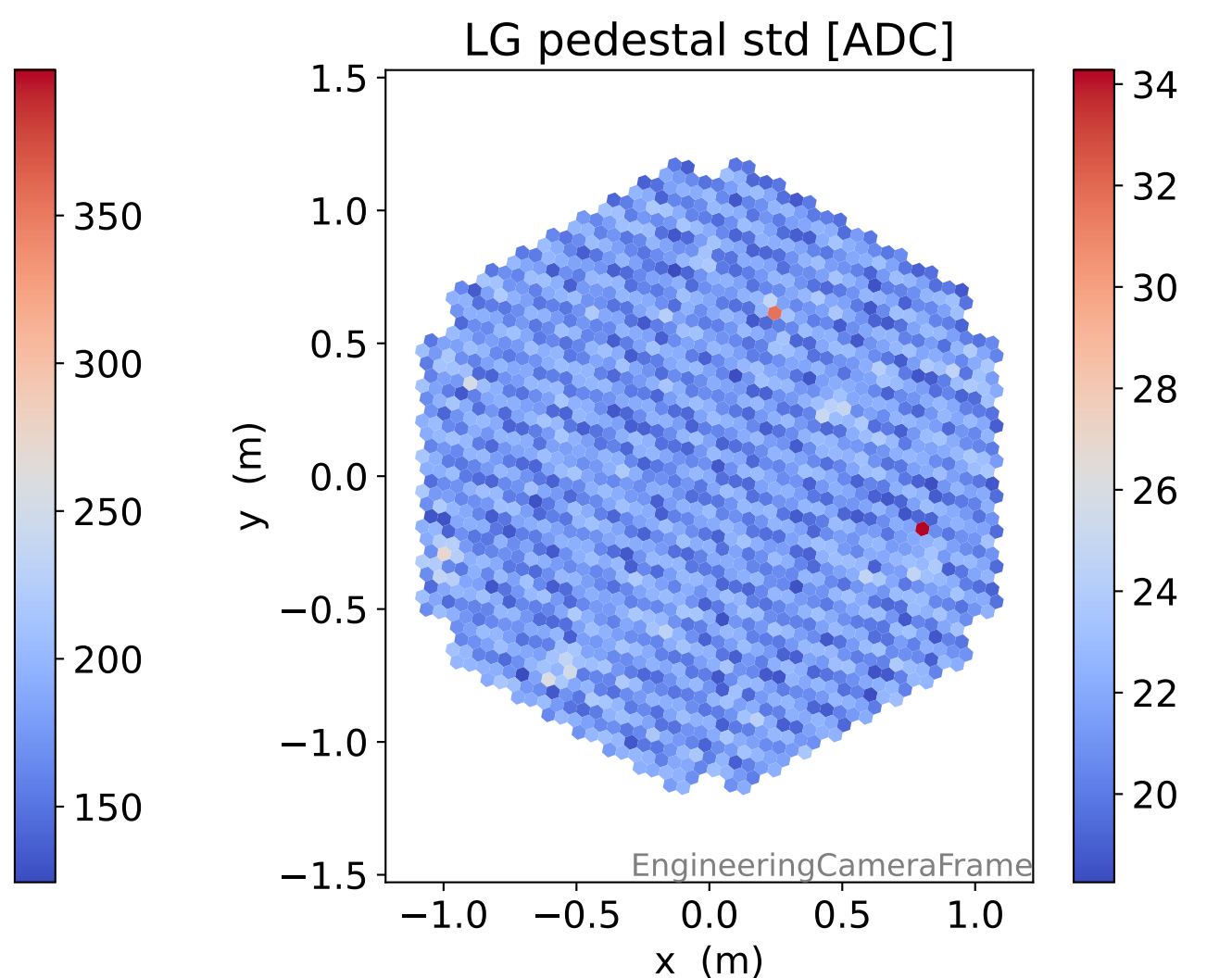
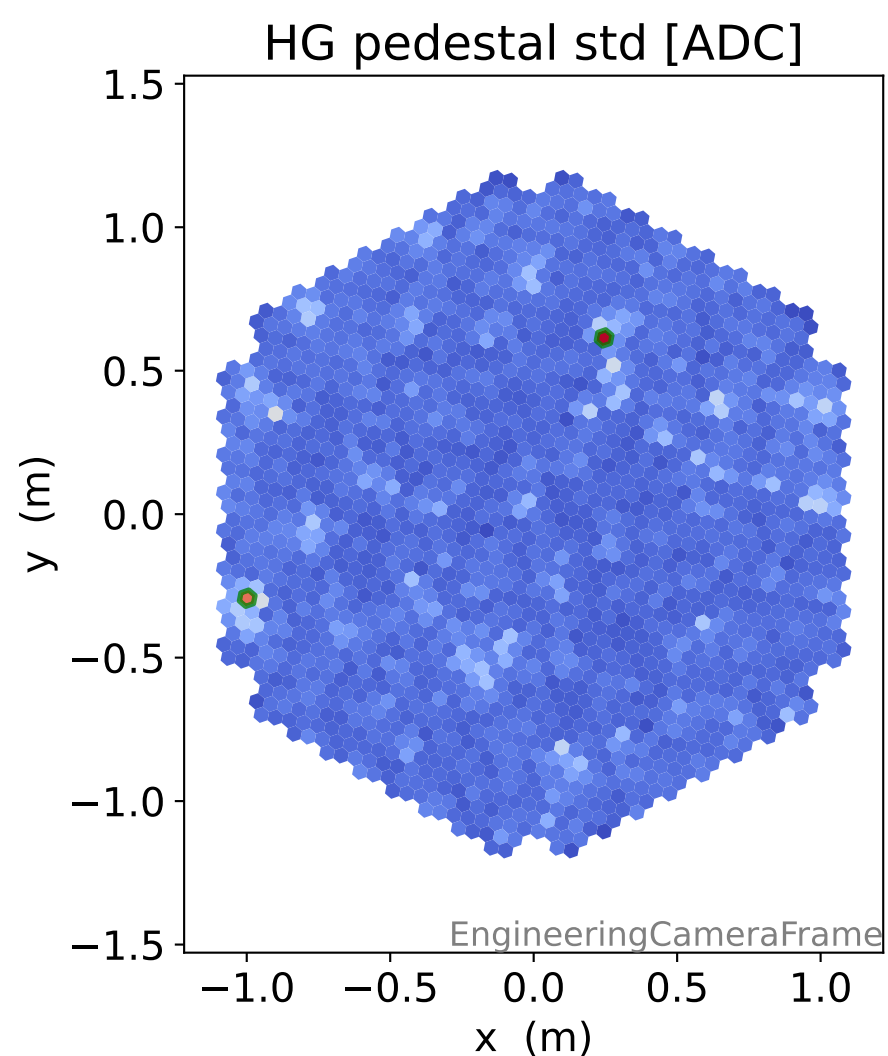
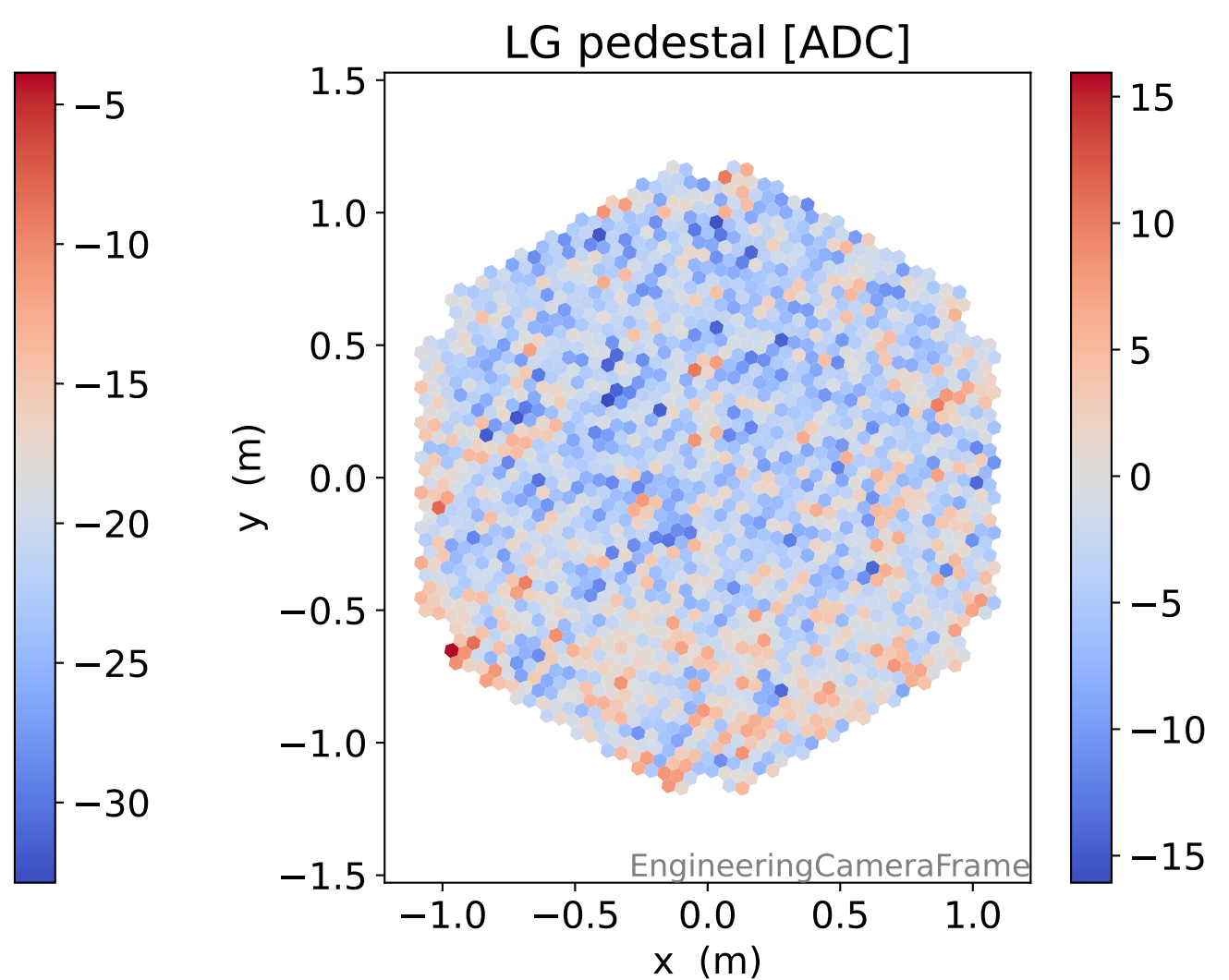
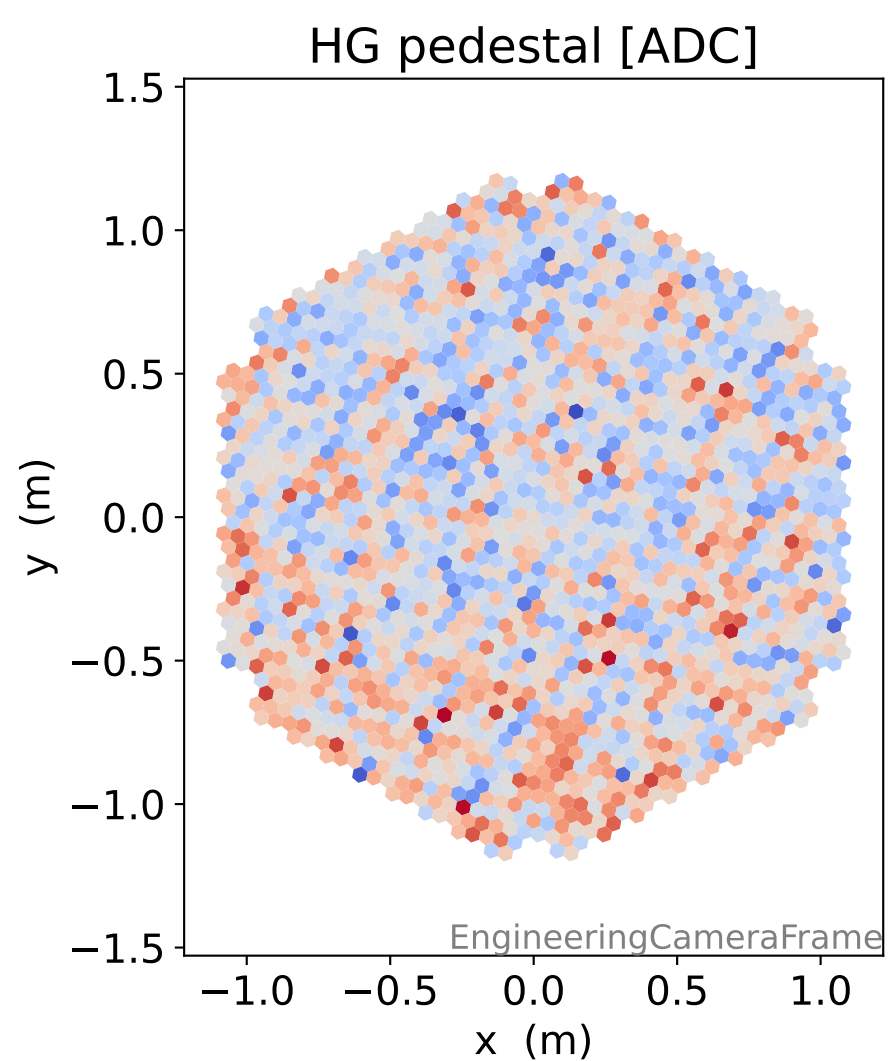
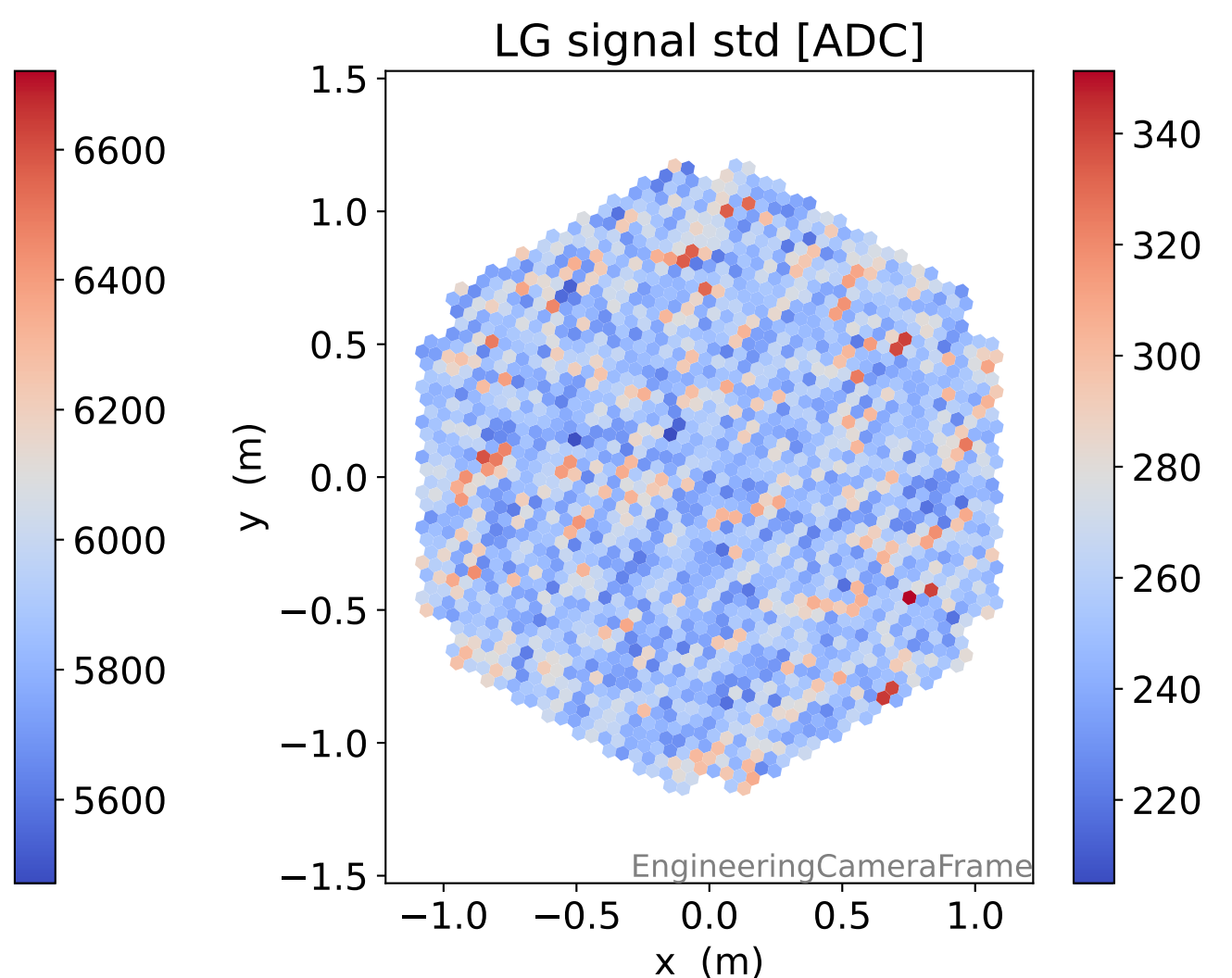
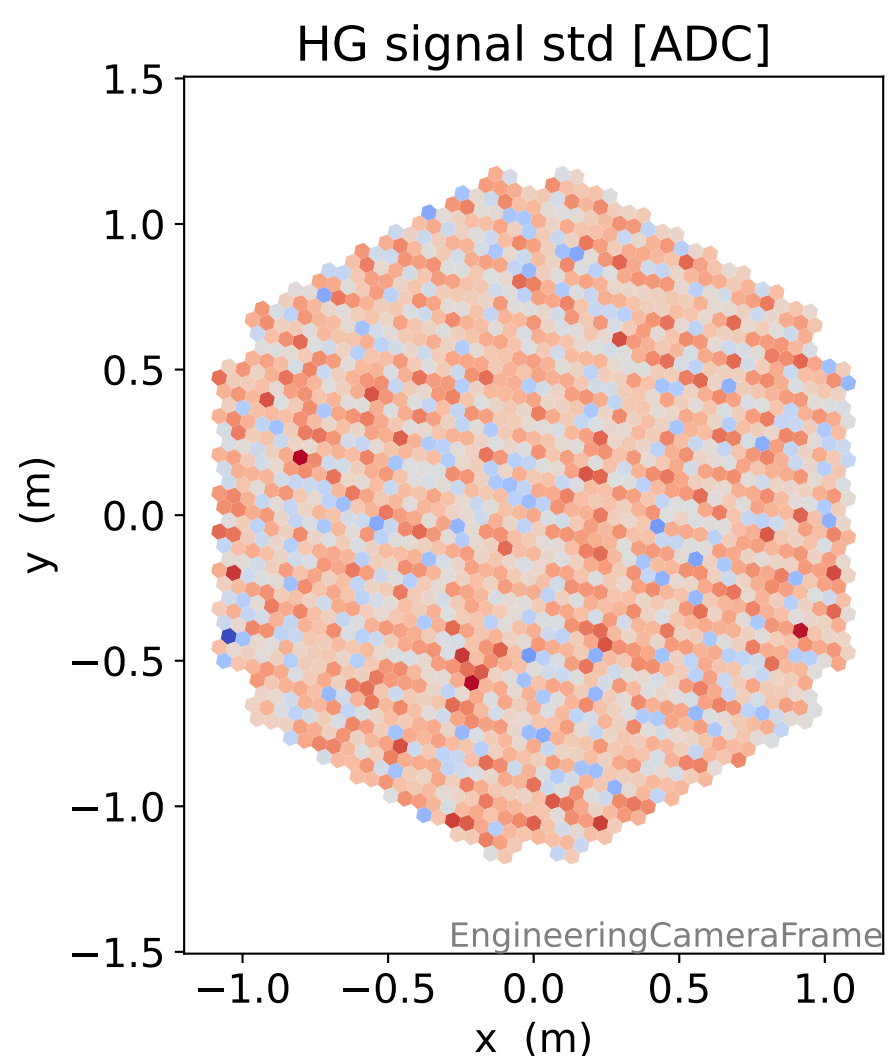
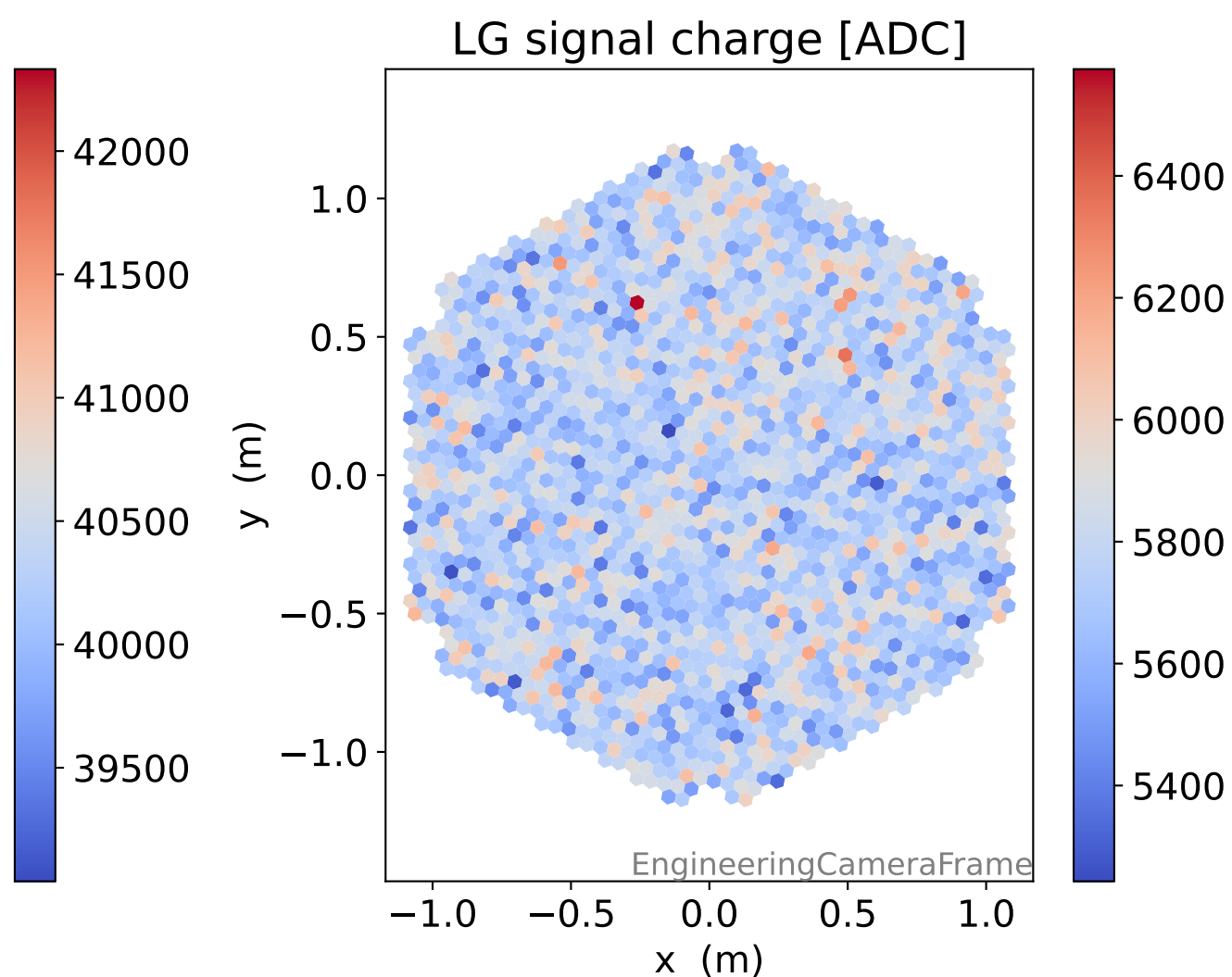
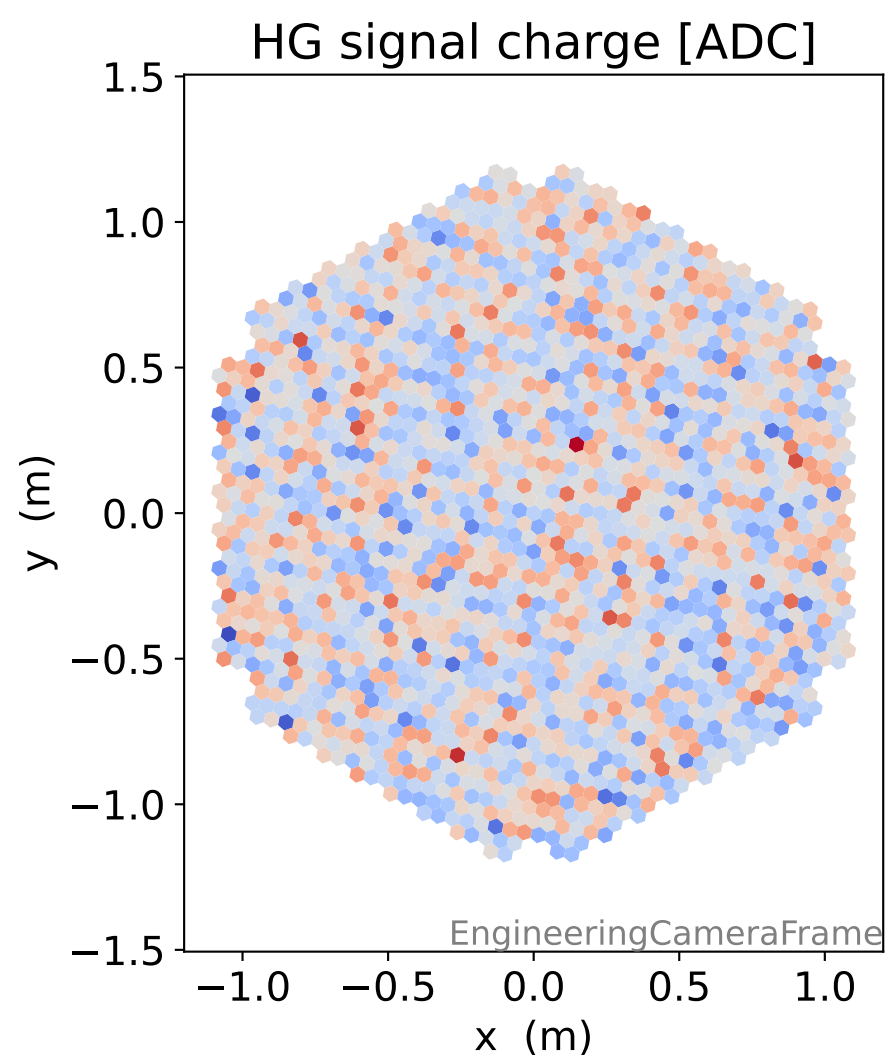
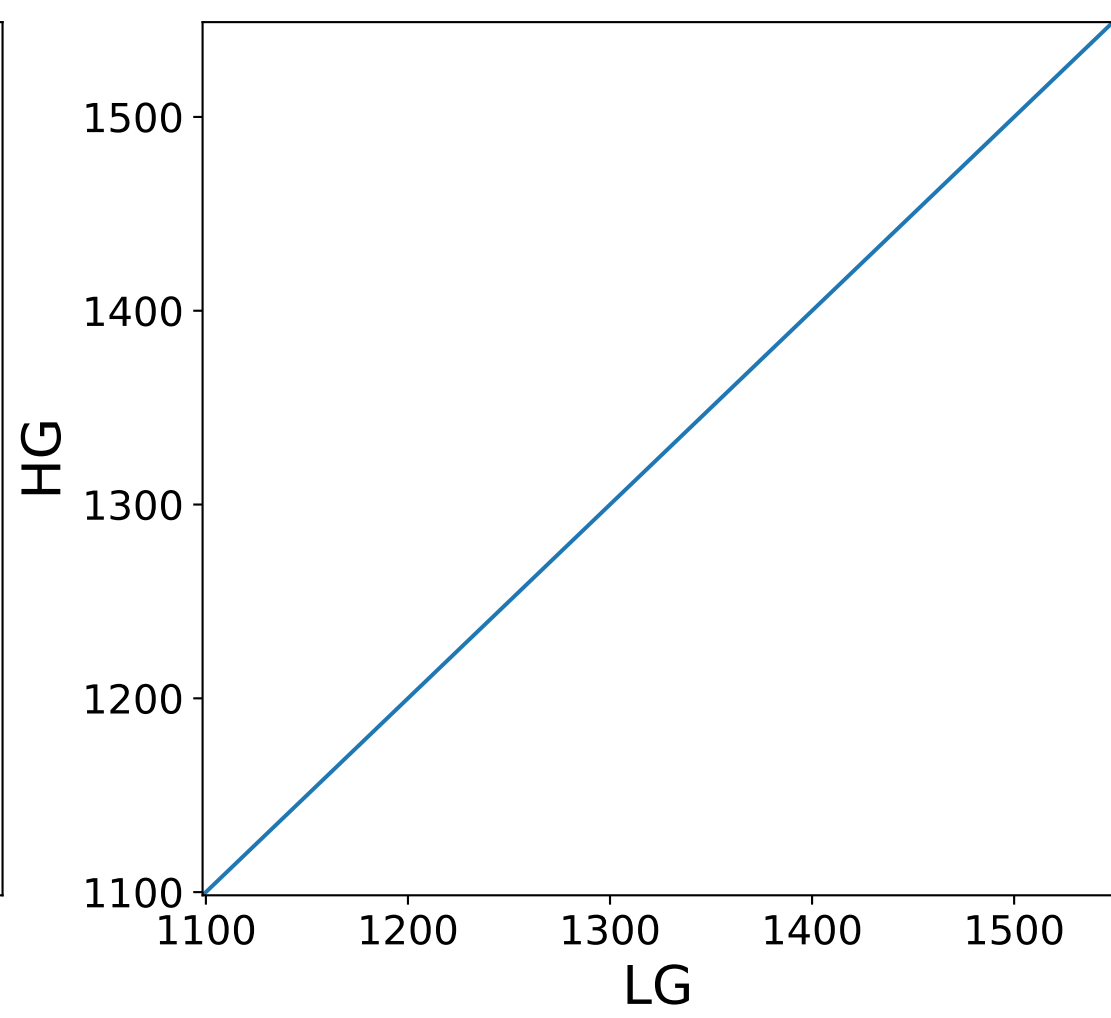
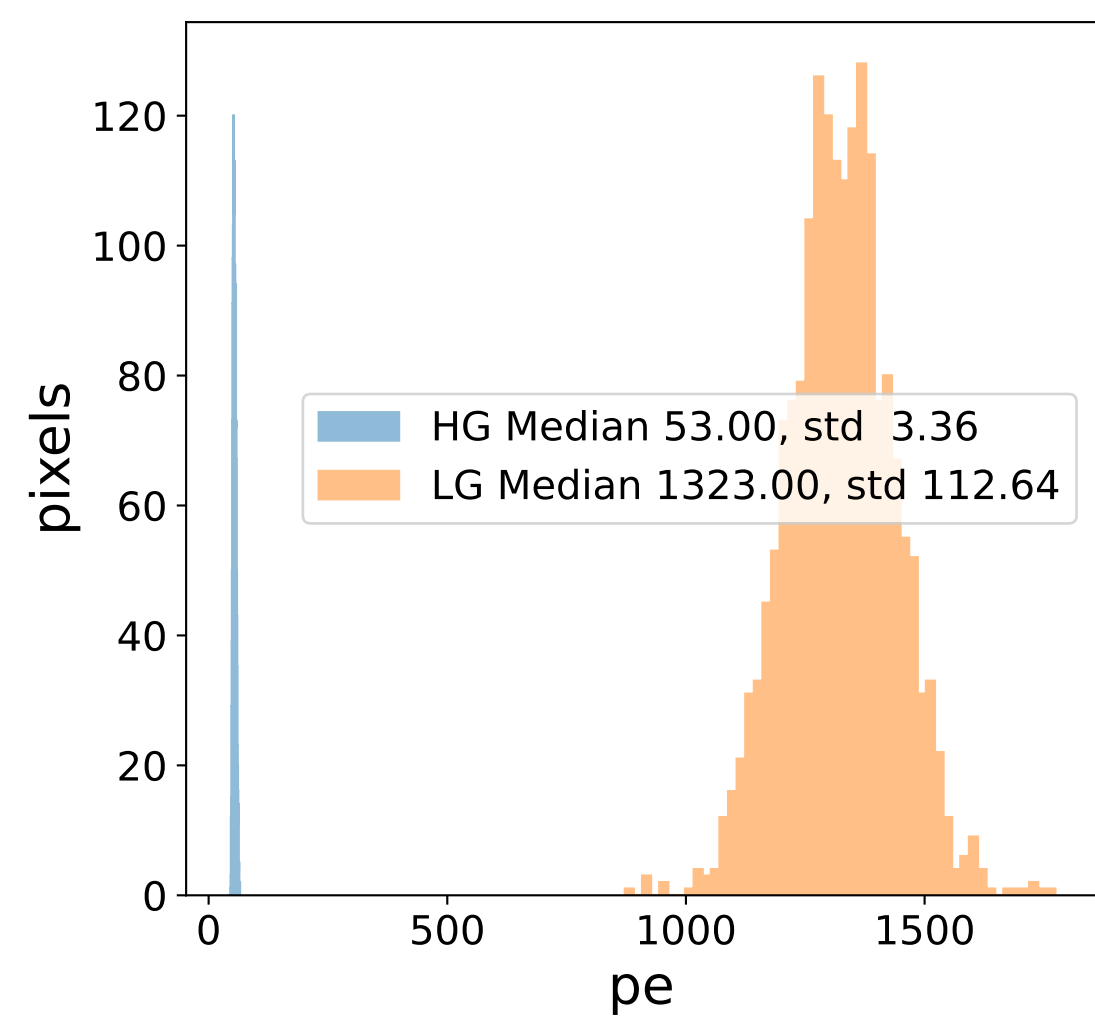
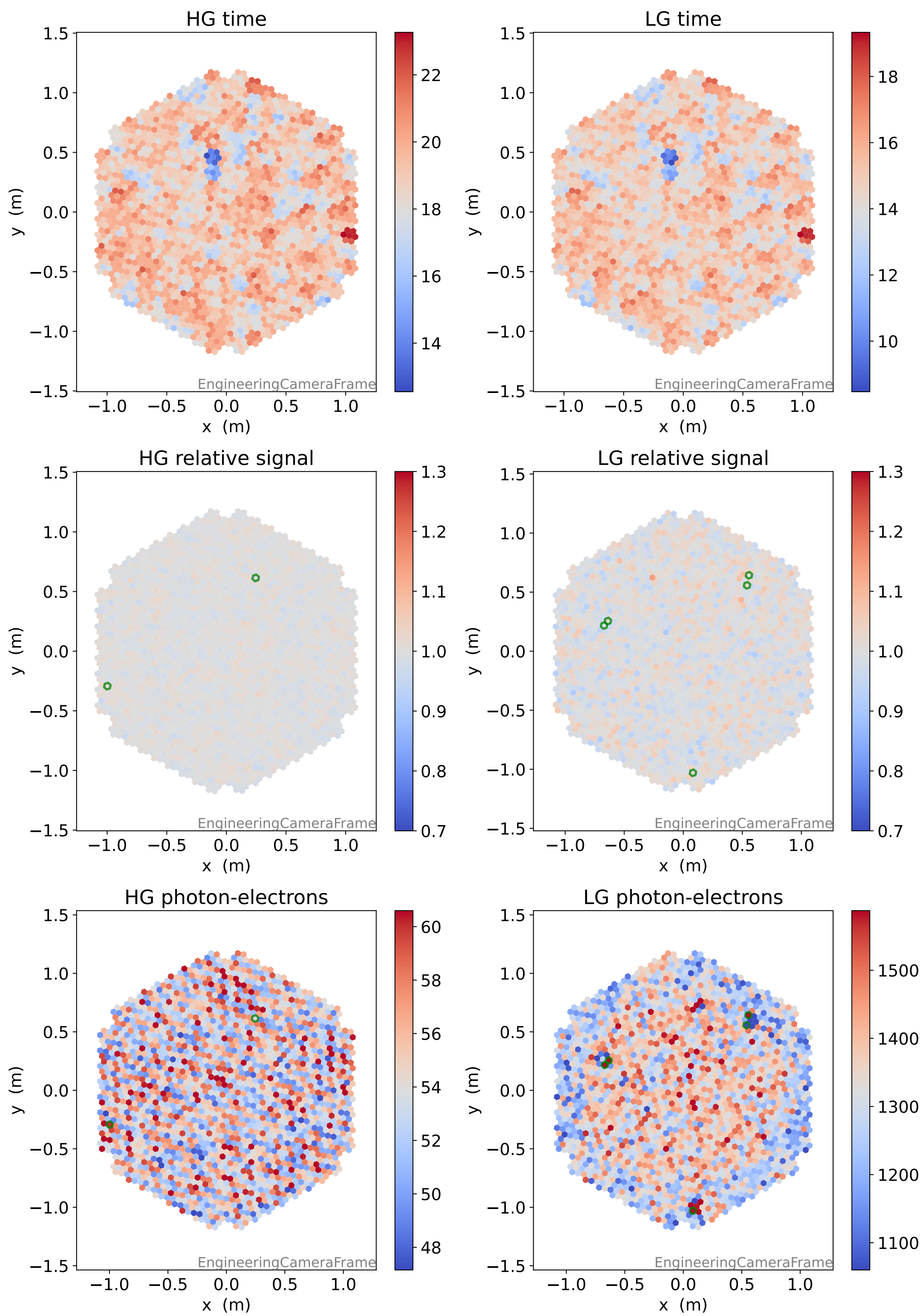


# Run 8682

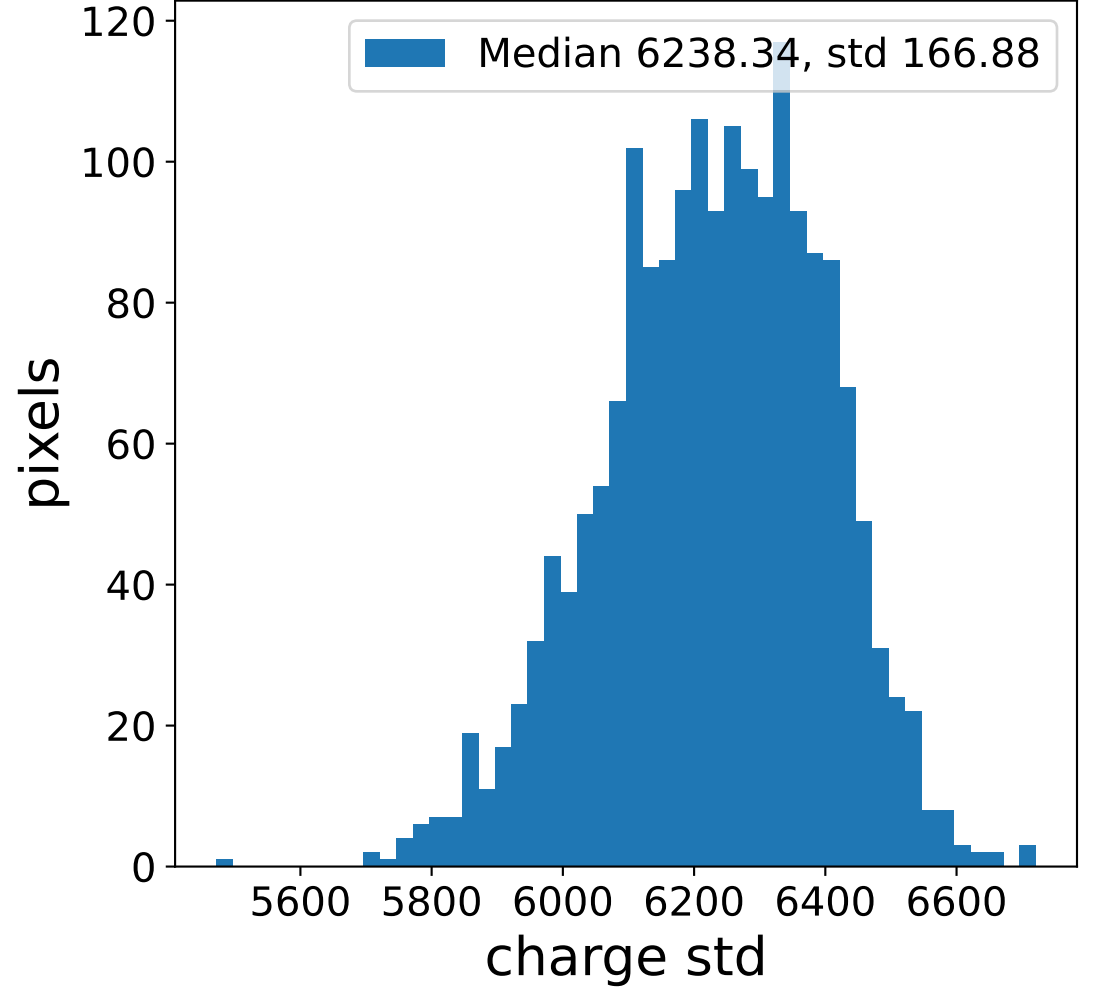
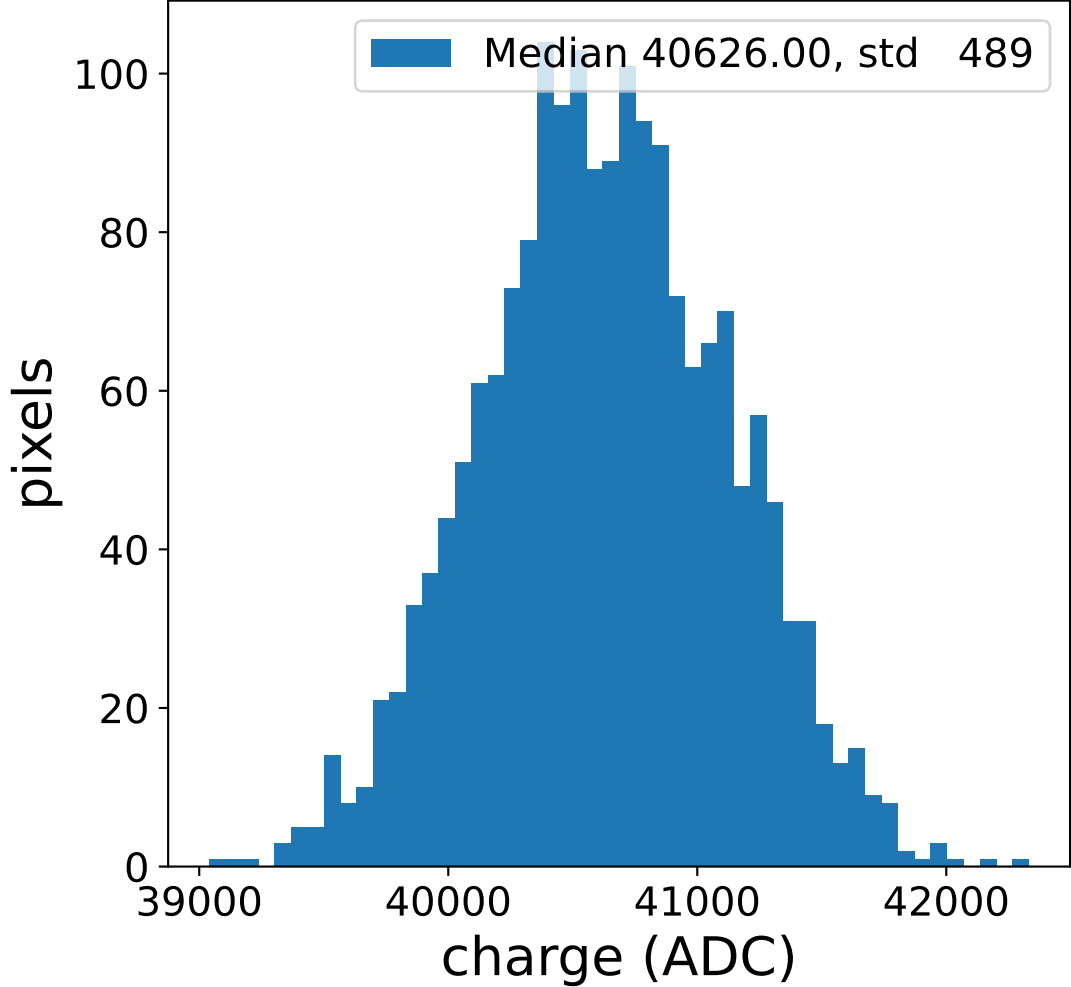


# Run 8682

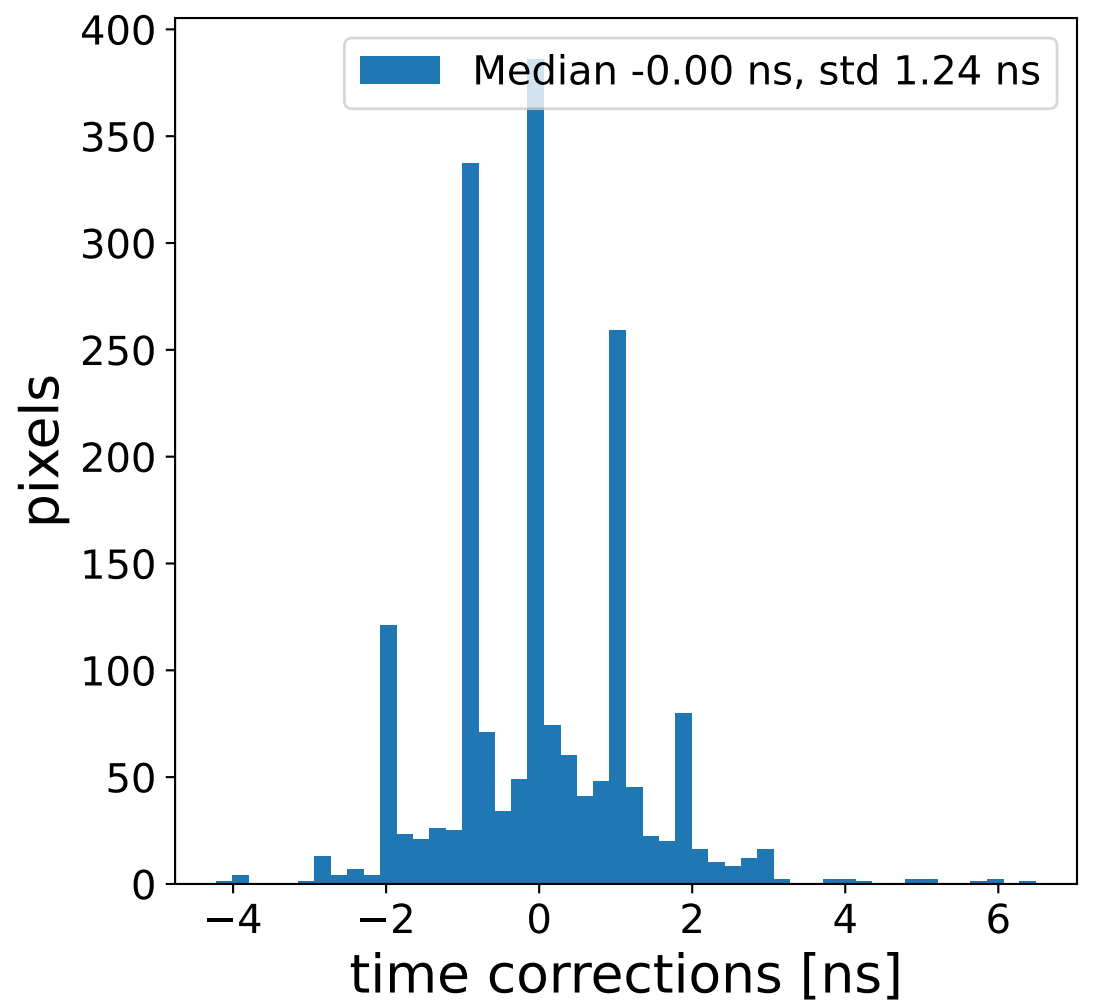
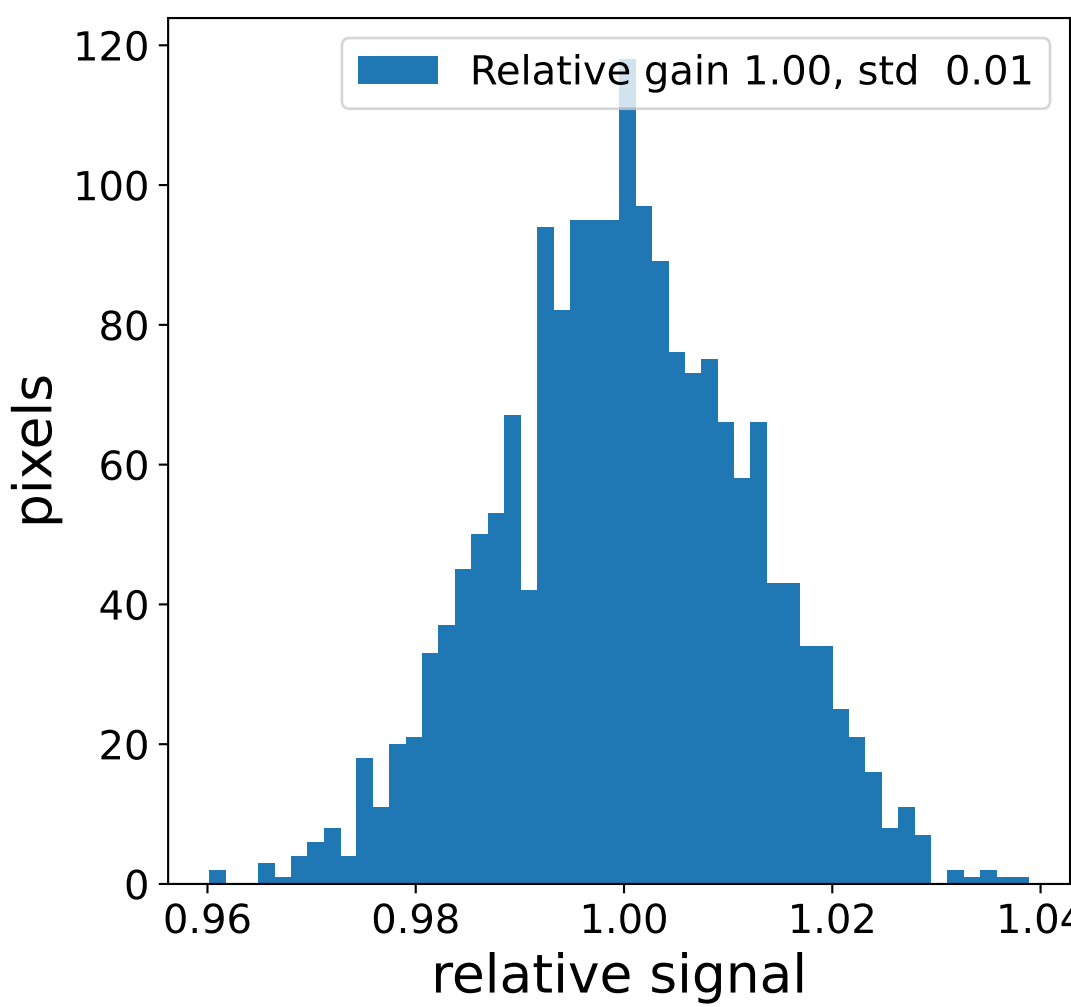
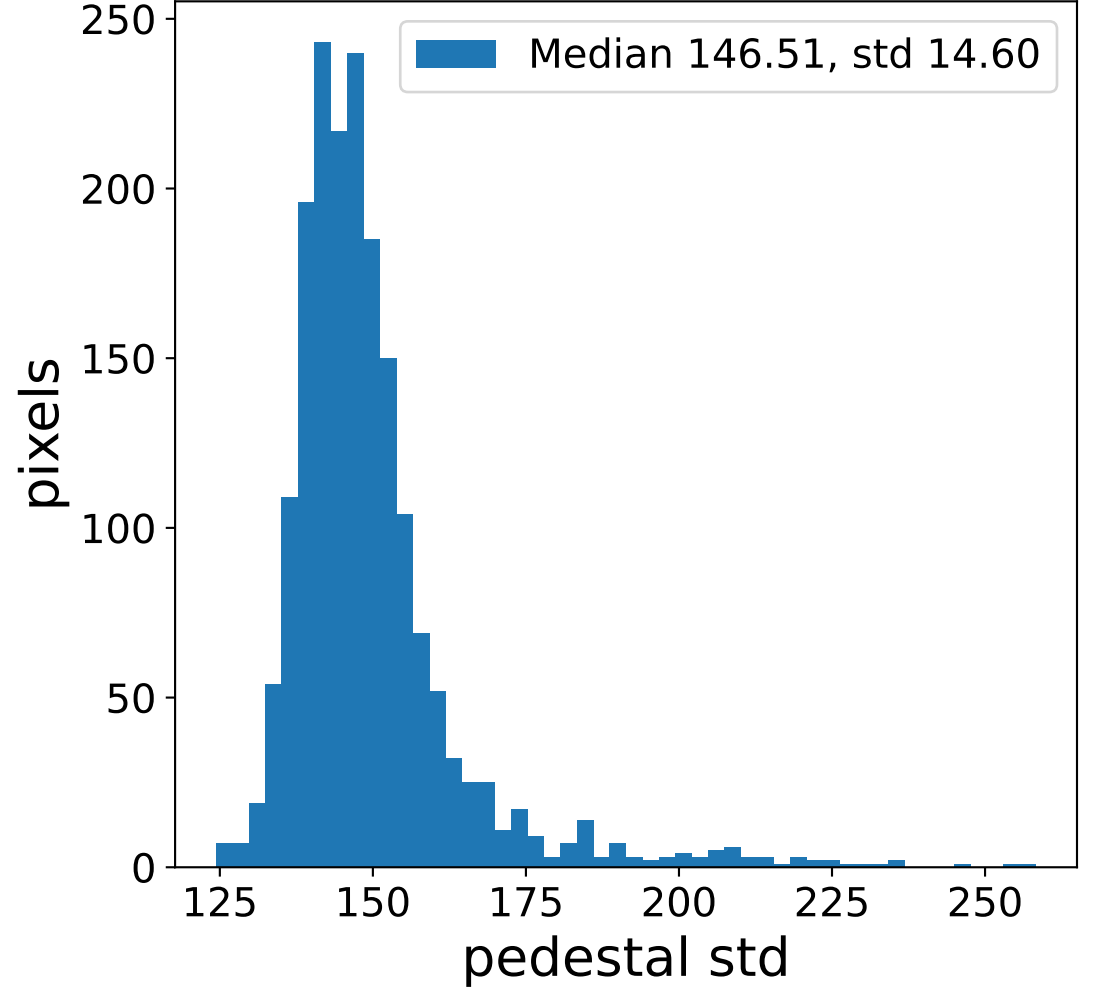
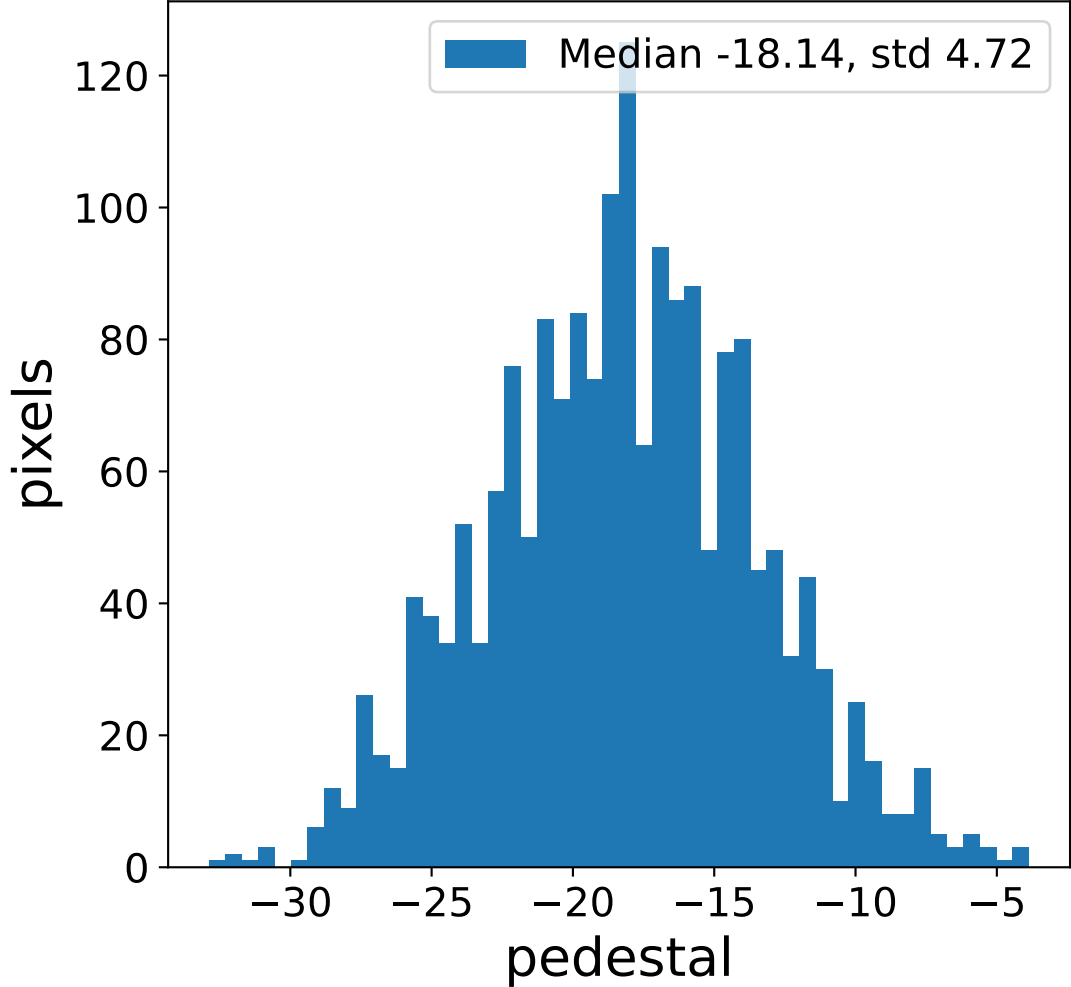


# Run 8682 channel: HG

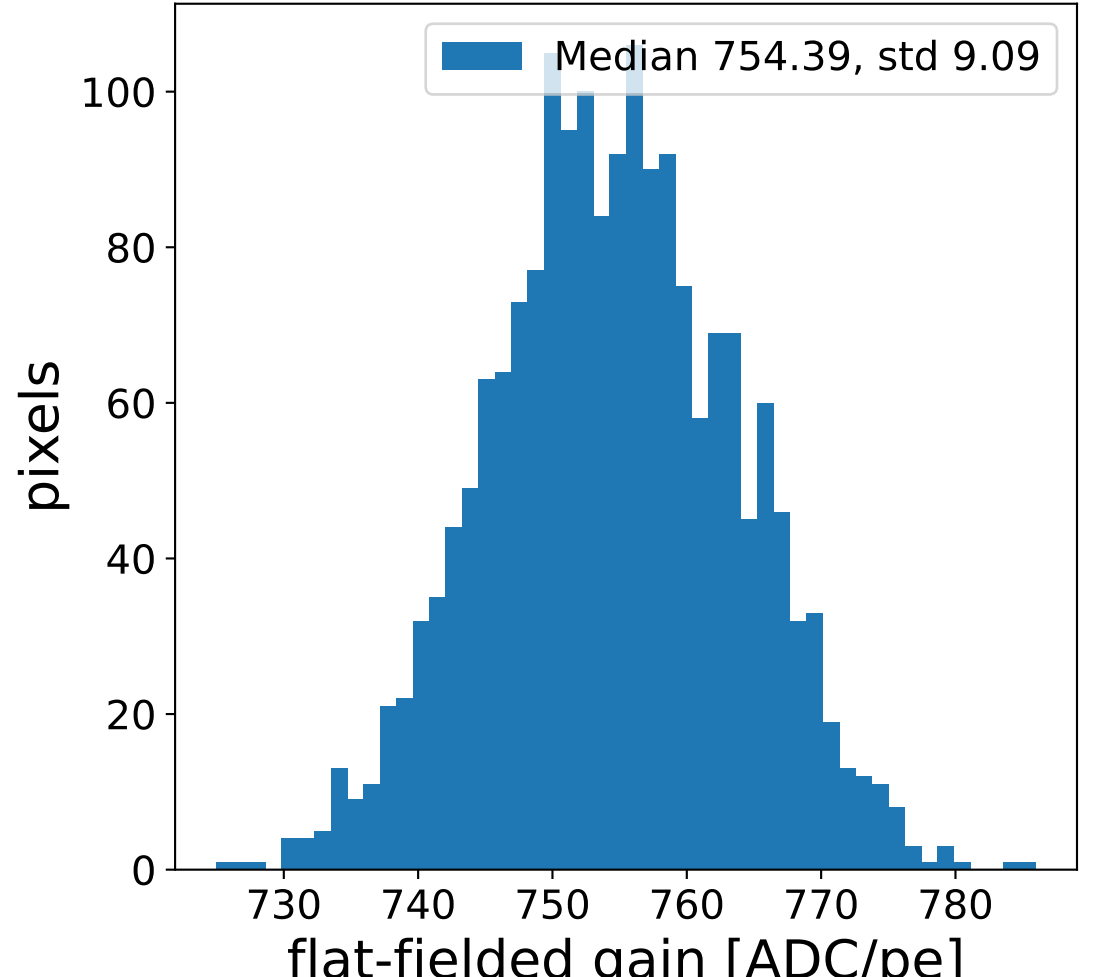
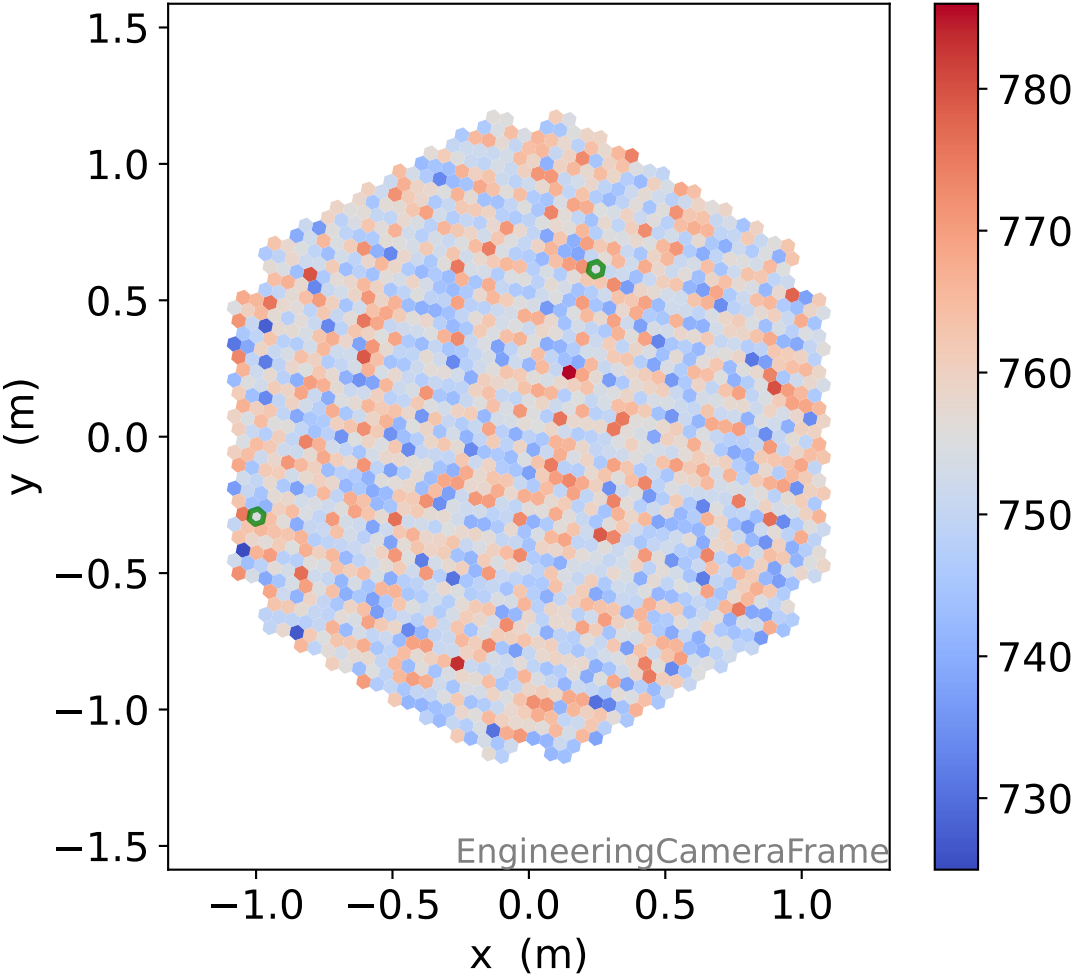
## FF sample of 10000 events



## pedestal sample of 10000 events

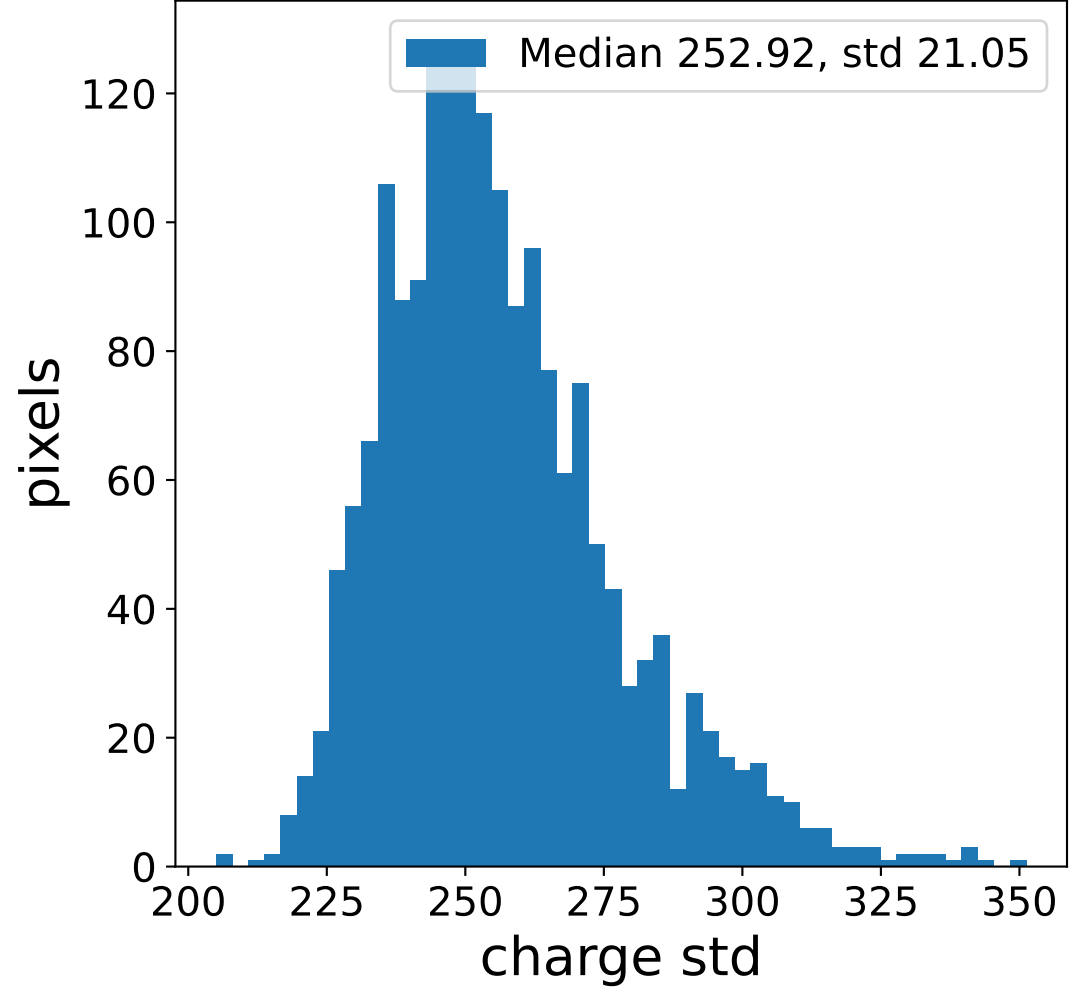
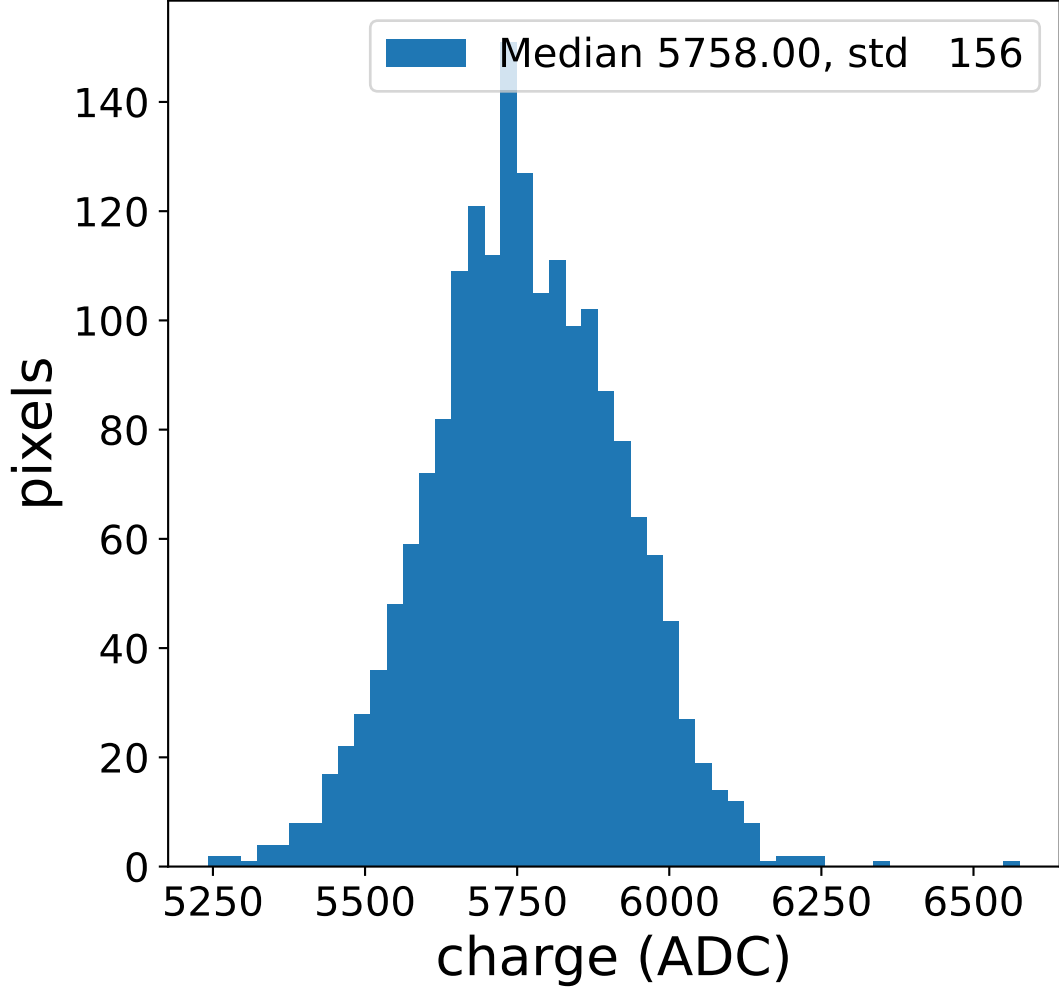


## flat-fielded gain [ADC/pe]

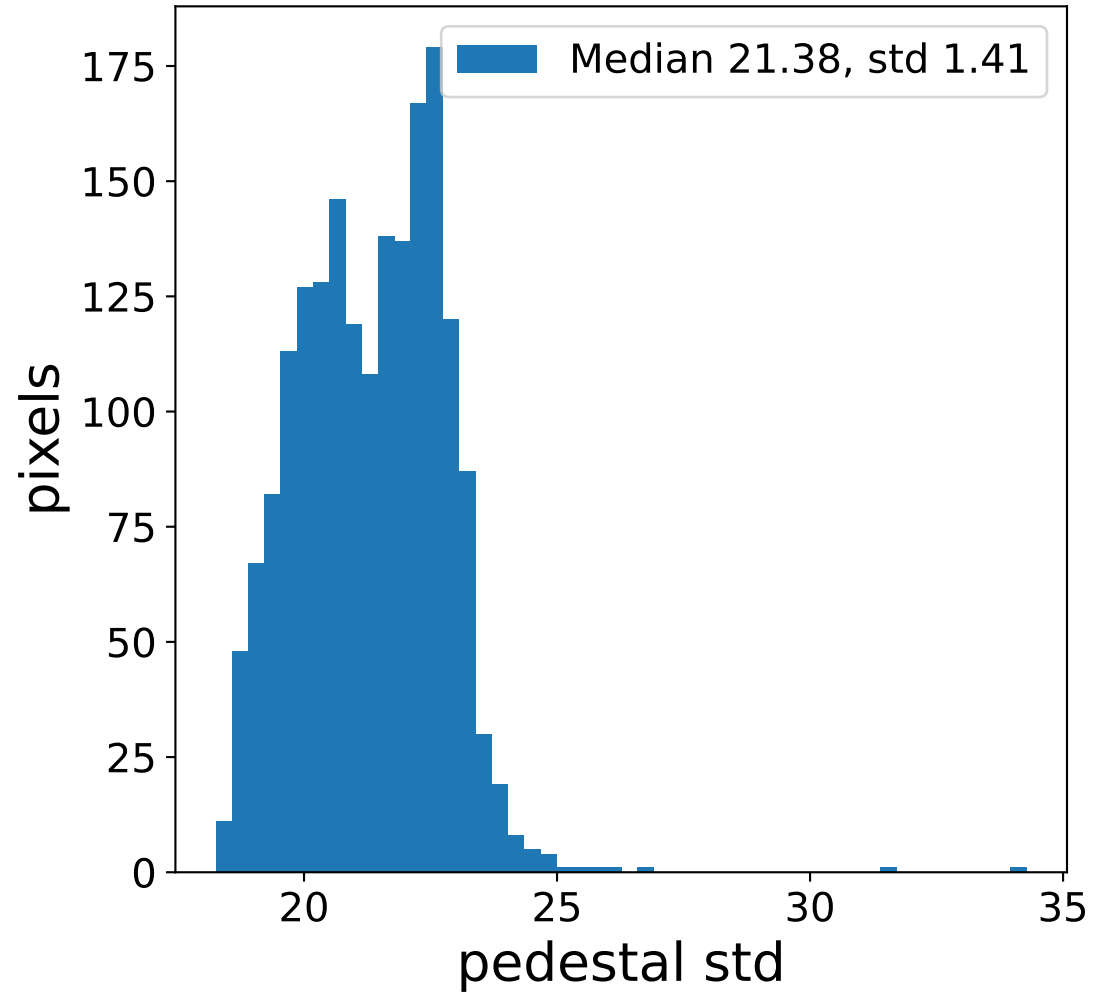
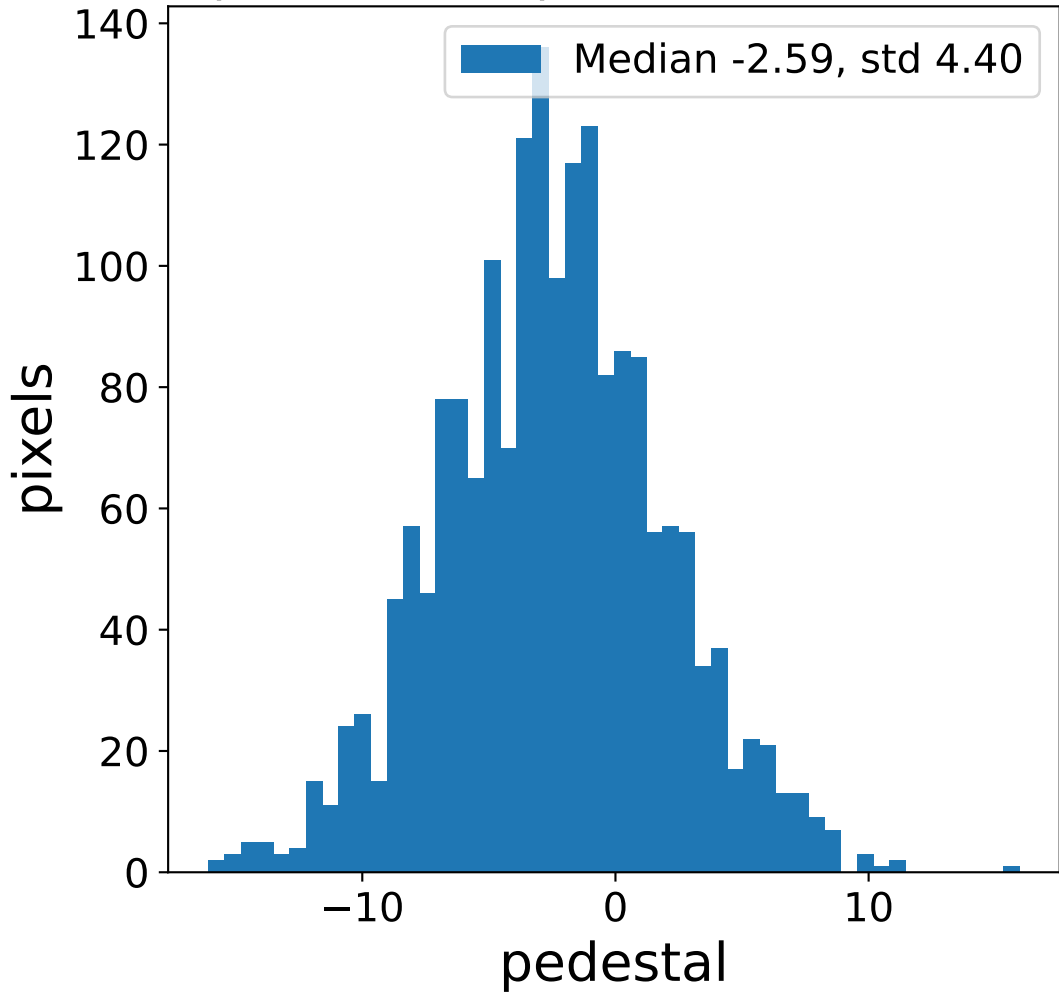


# Run 8682 channel: LG

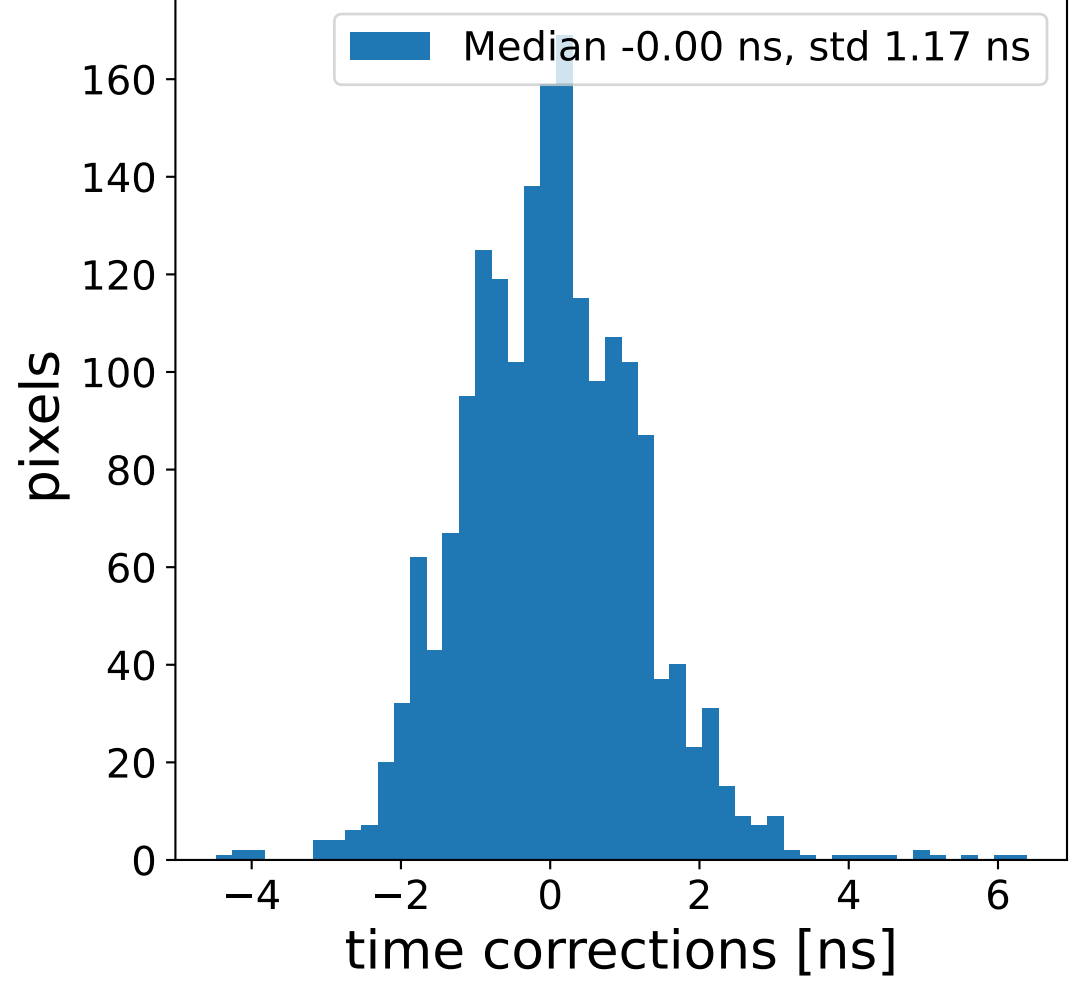
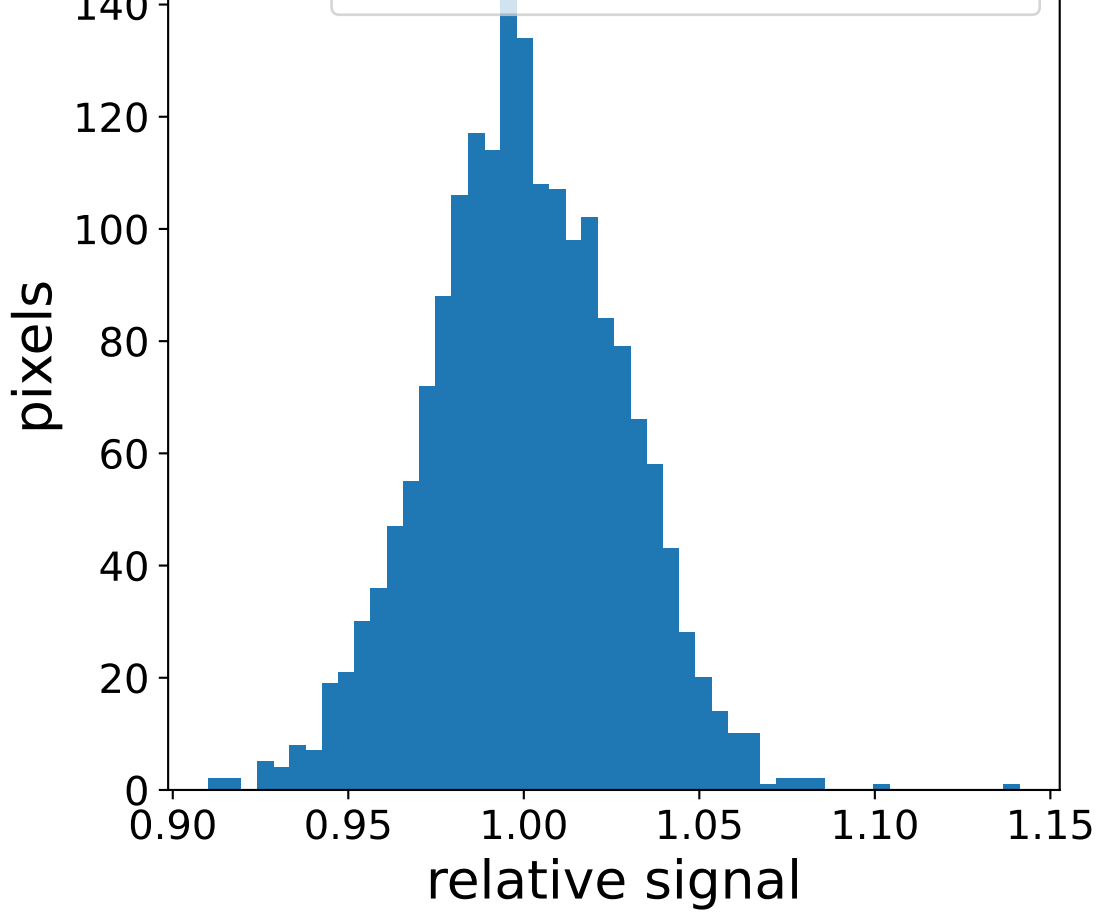
### FF sample of 10000 events



### pedestal sample of 10000 events



### Relative gain 1.00, std 0.03



### flat-fielded gain [ADC/pe]

