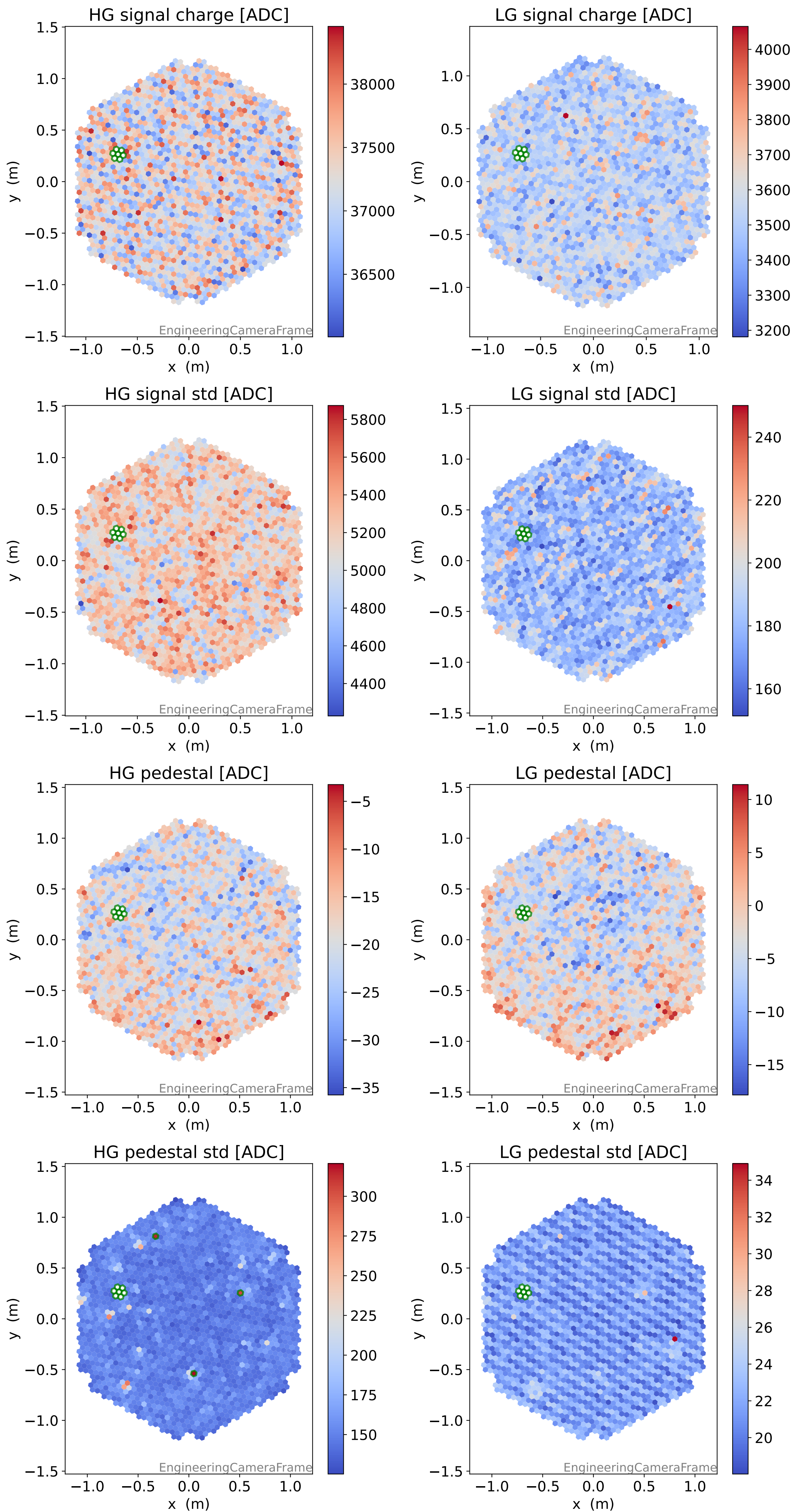
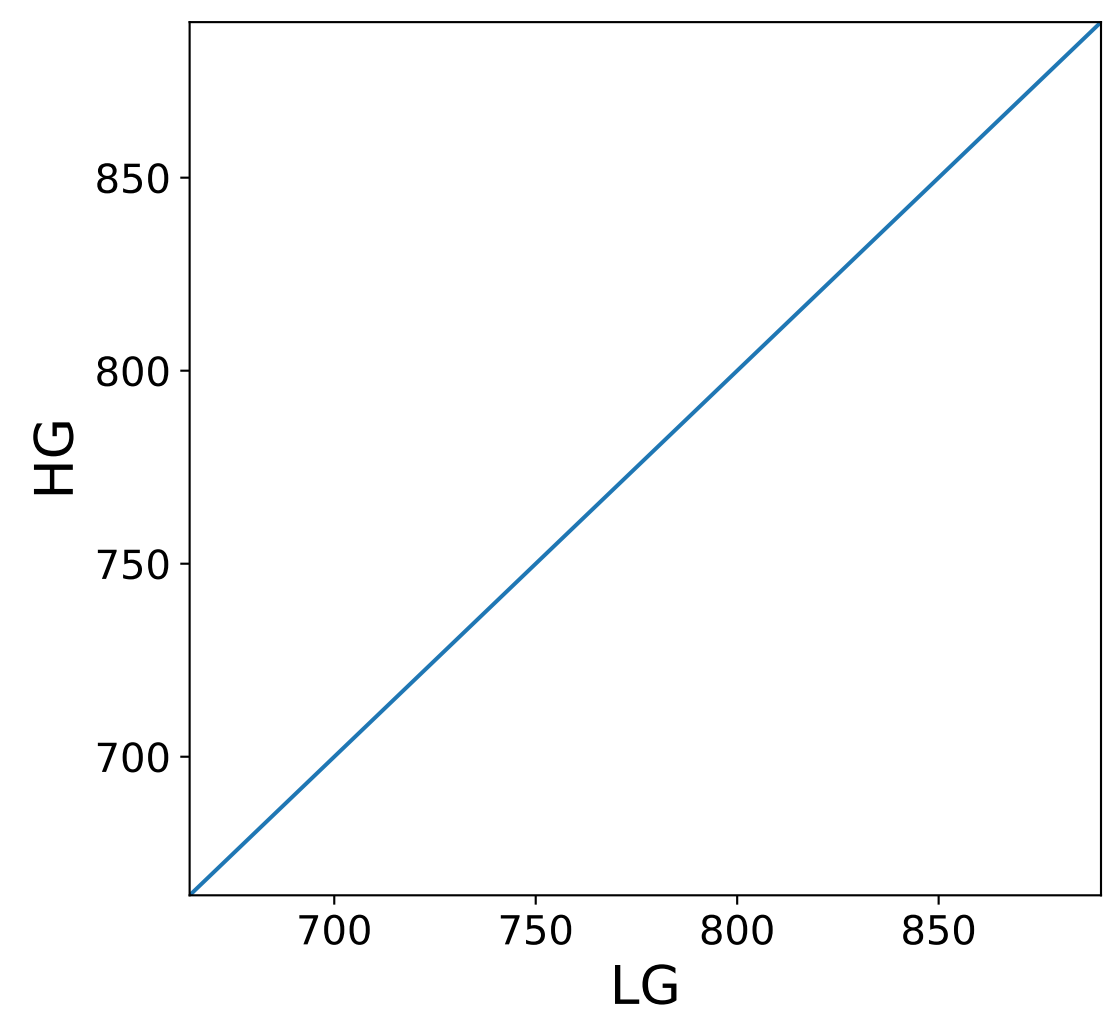
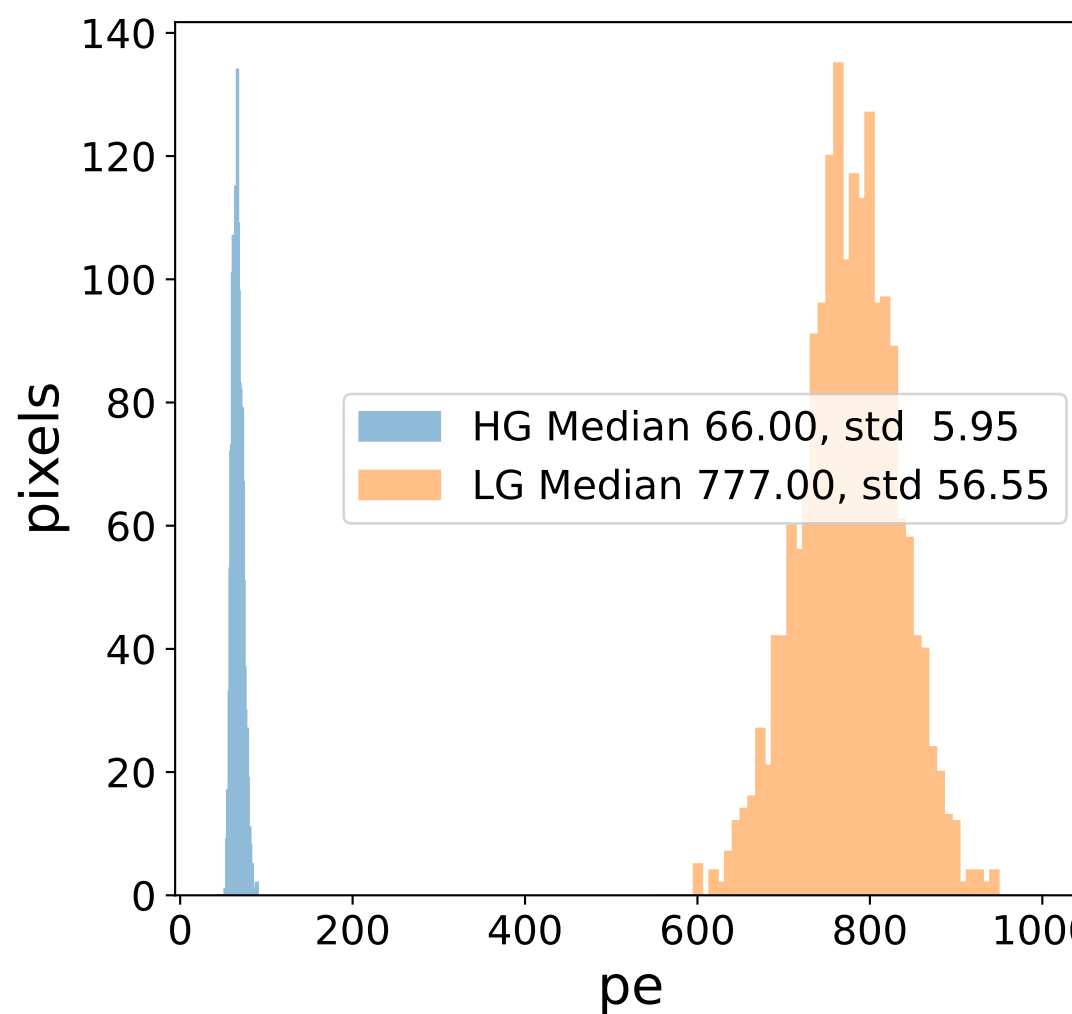
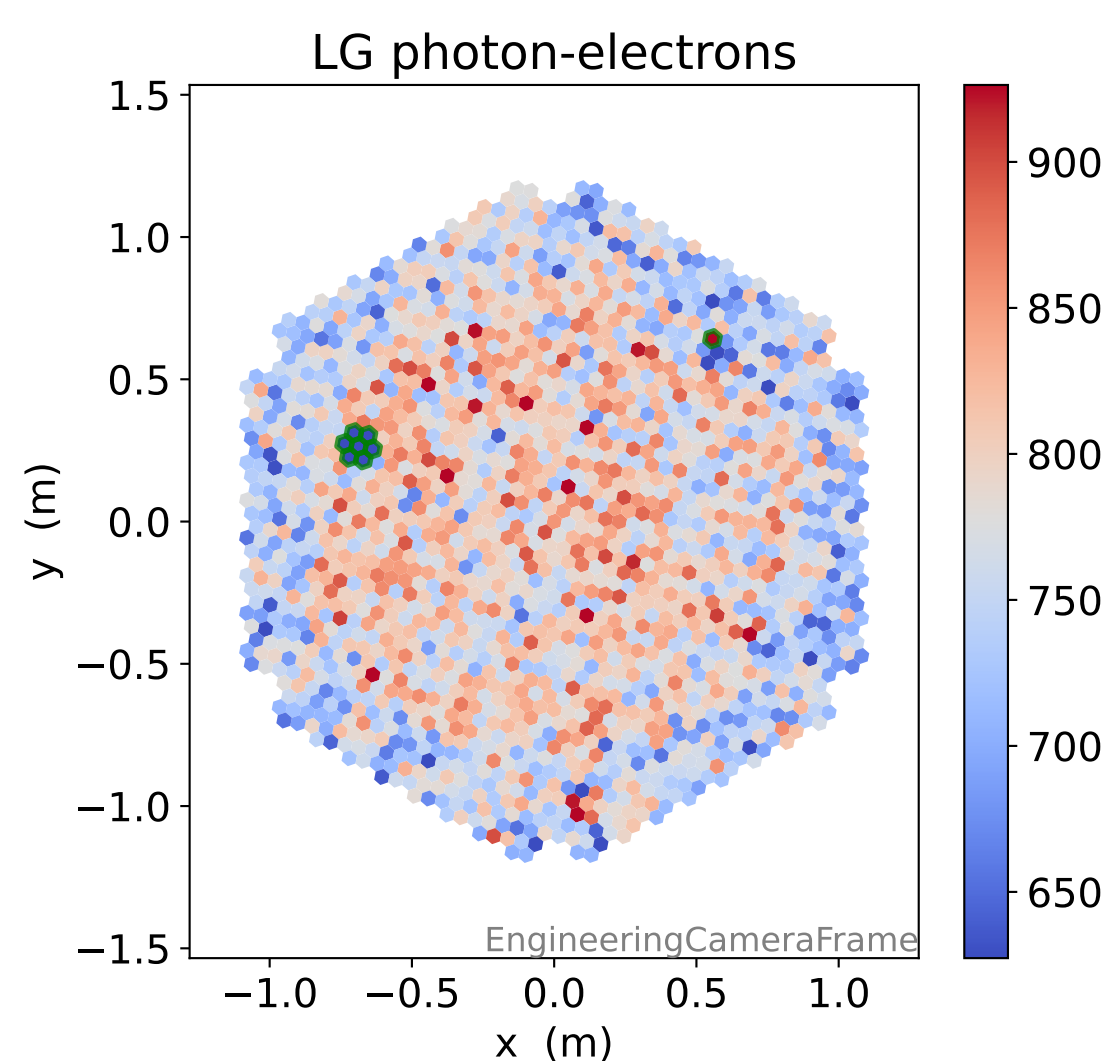
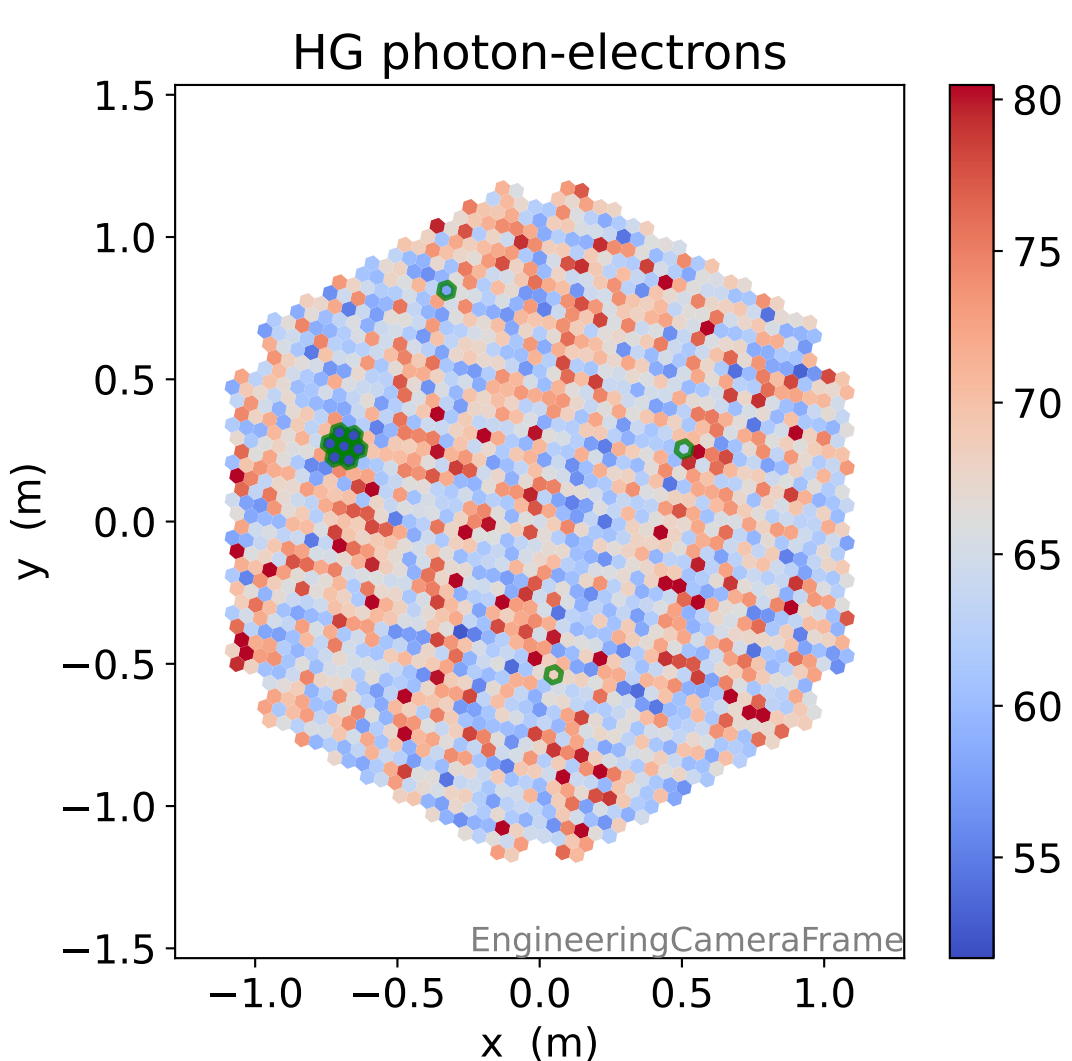
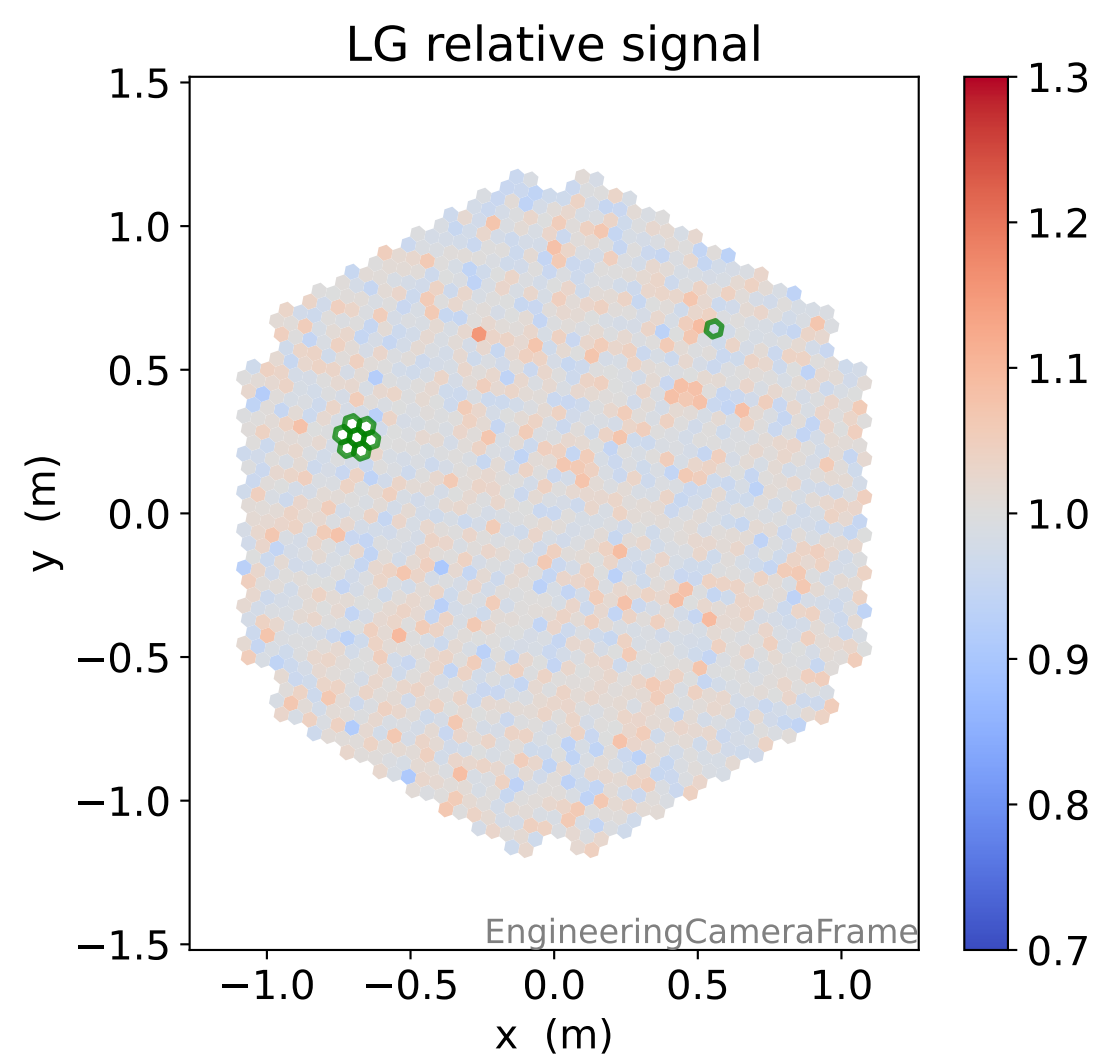
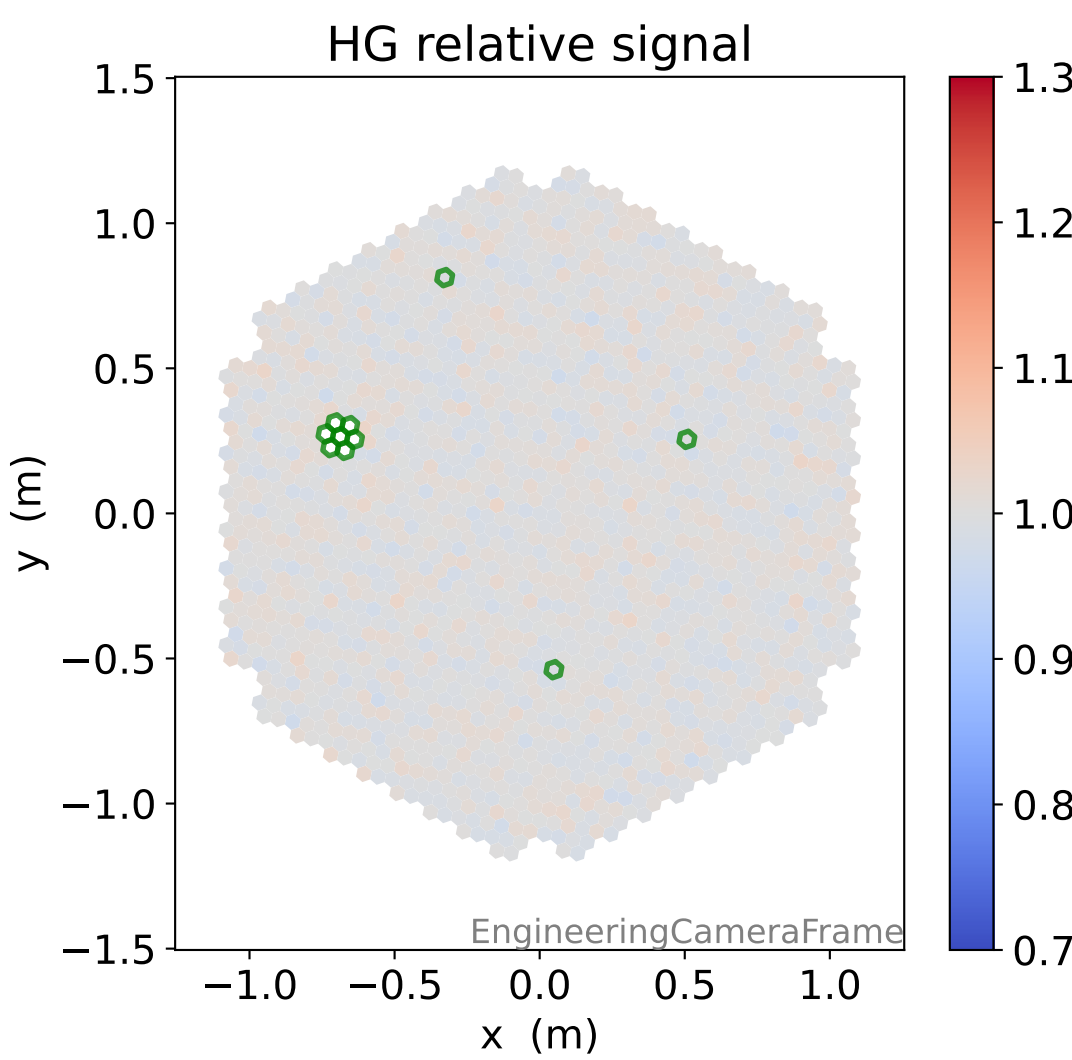
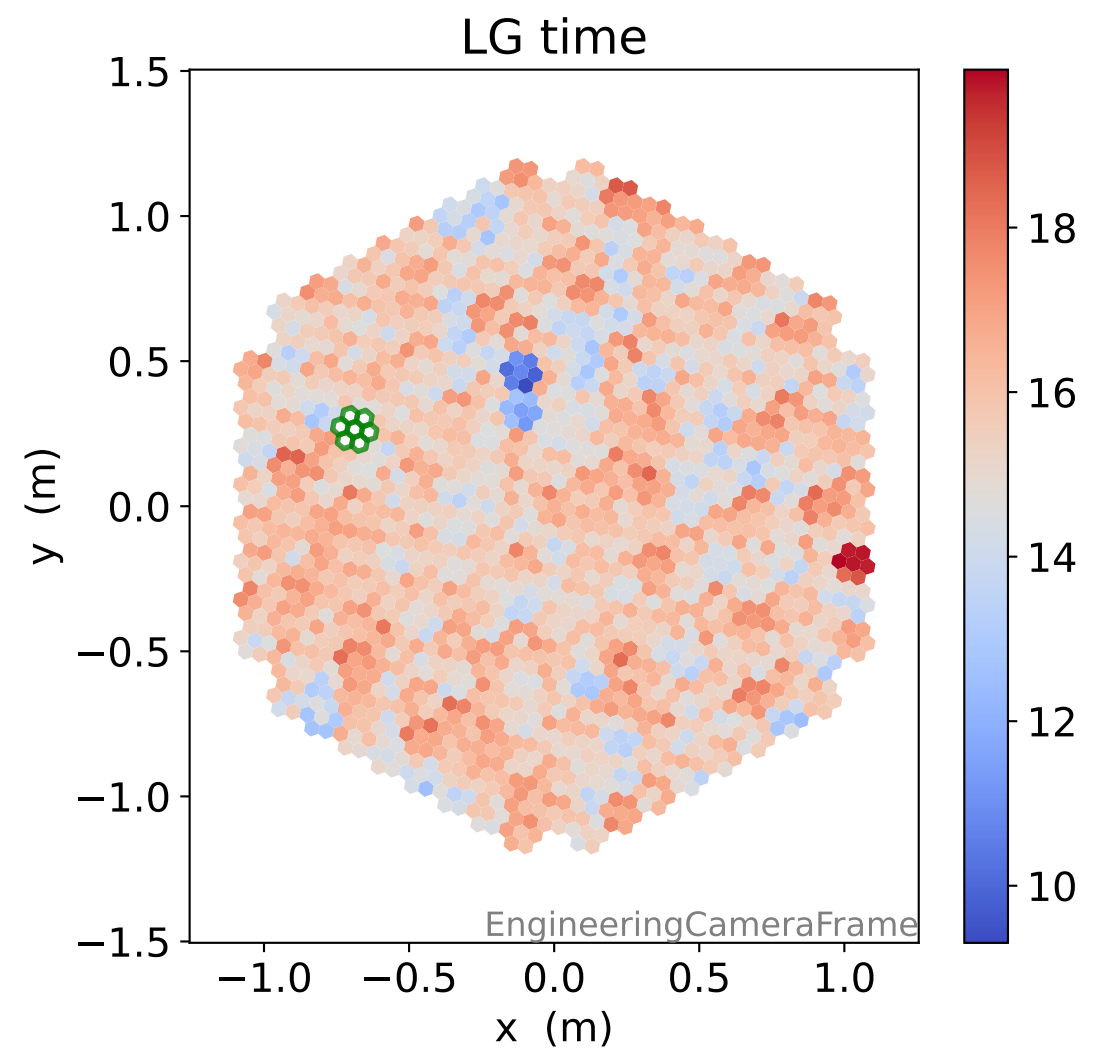
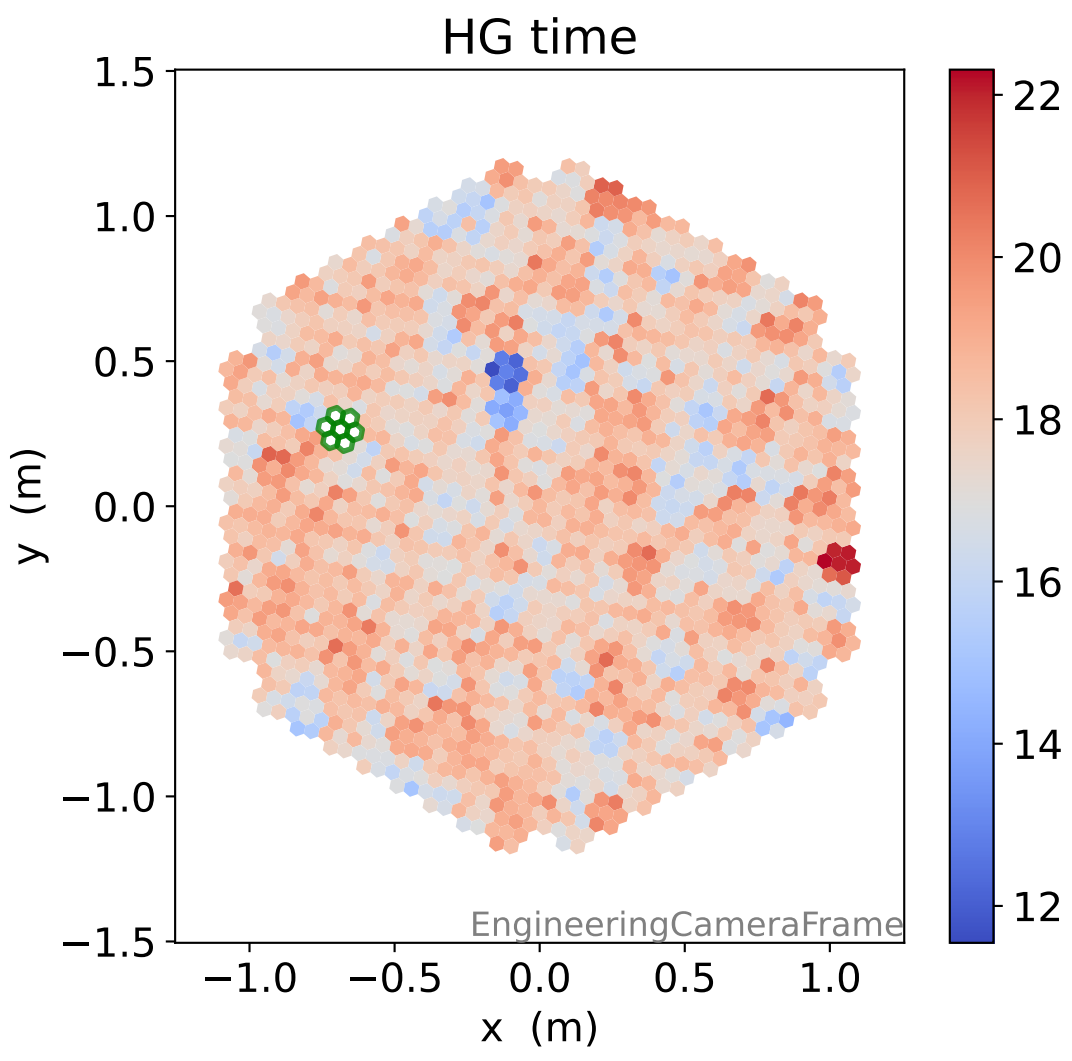


# Run 7667

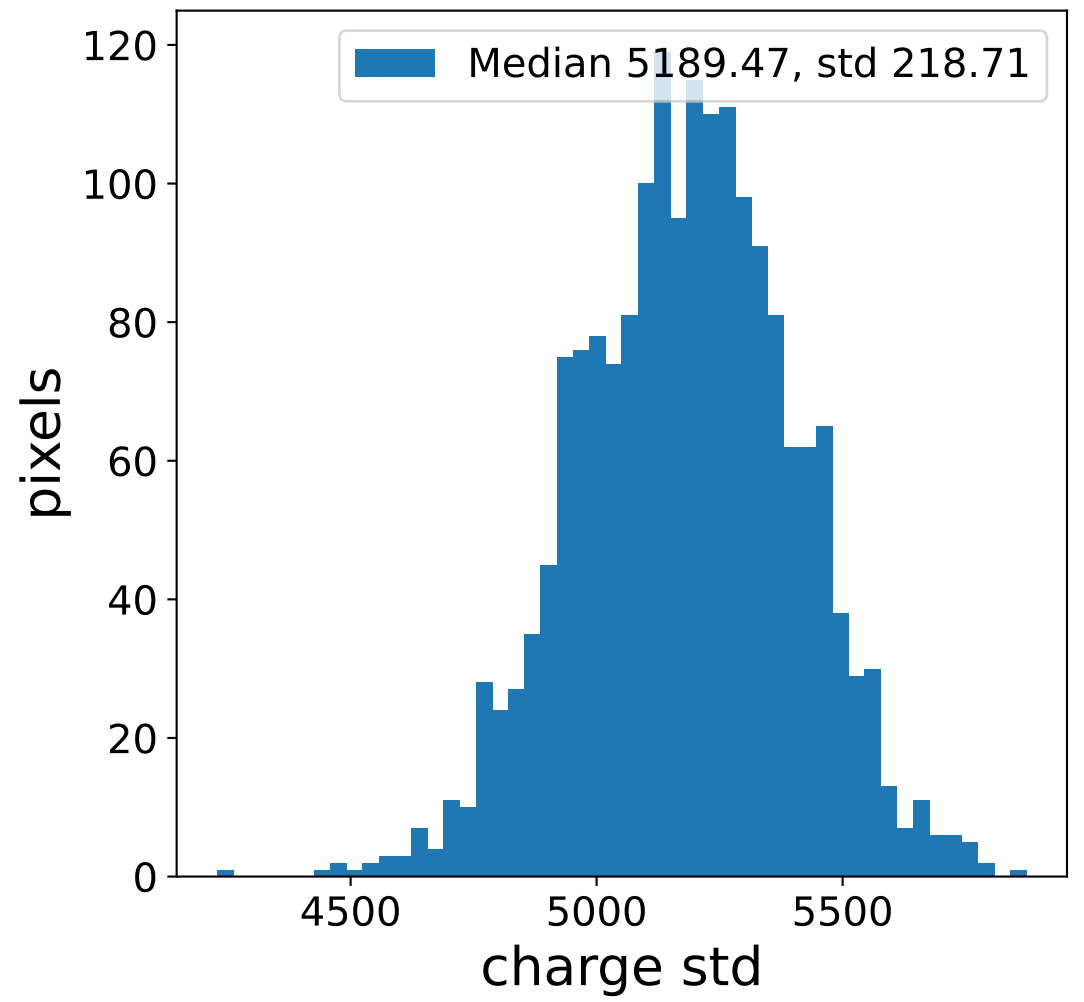
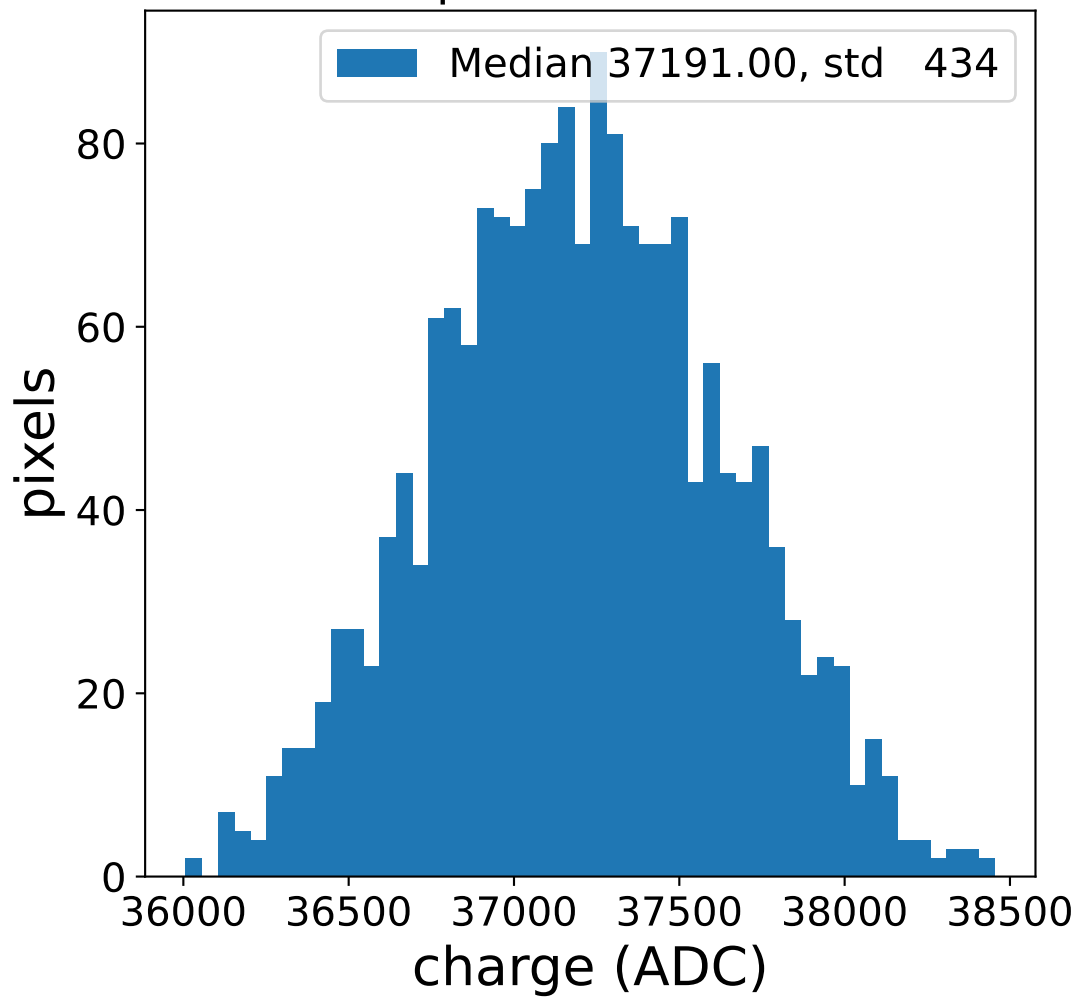


# Run 7667

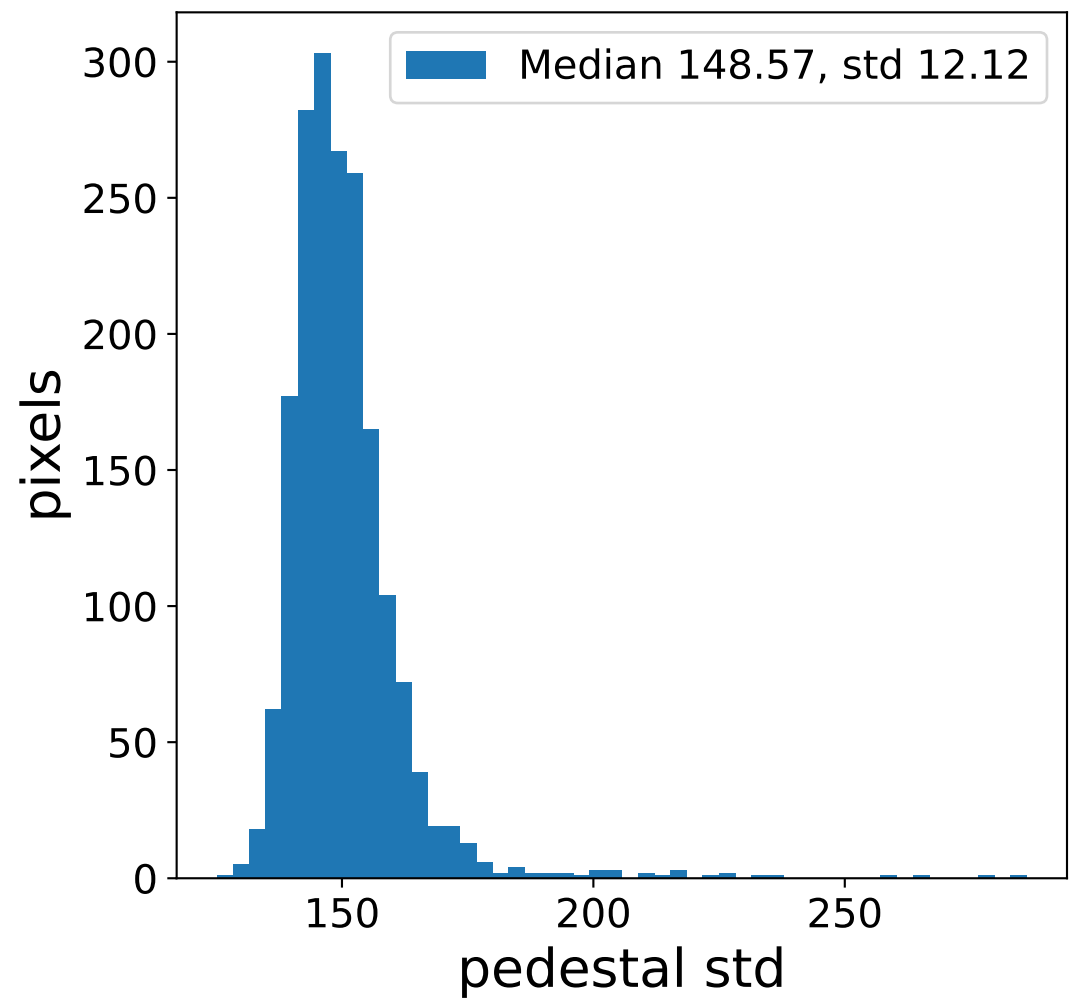
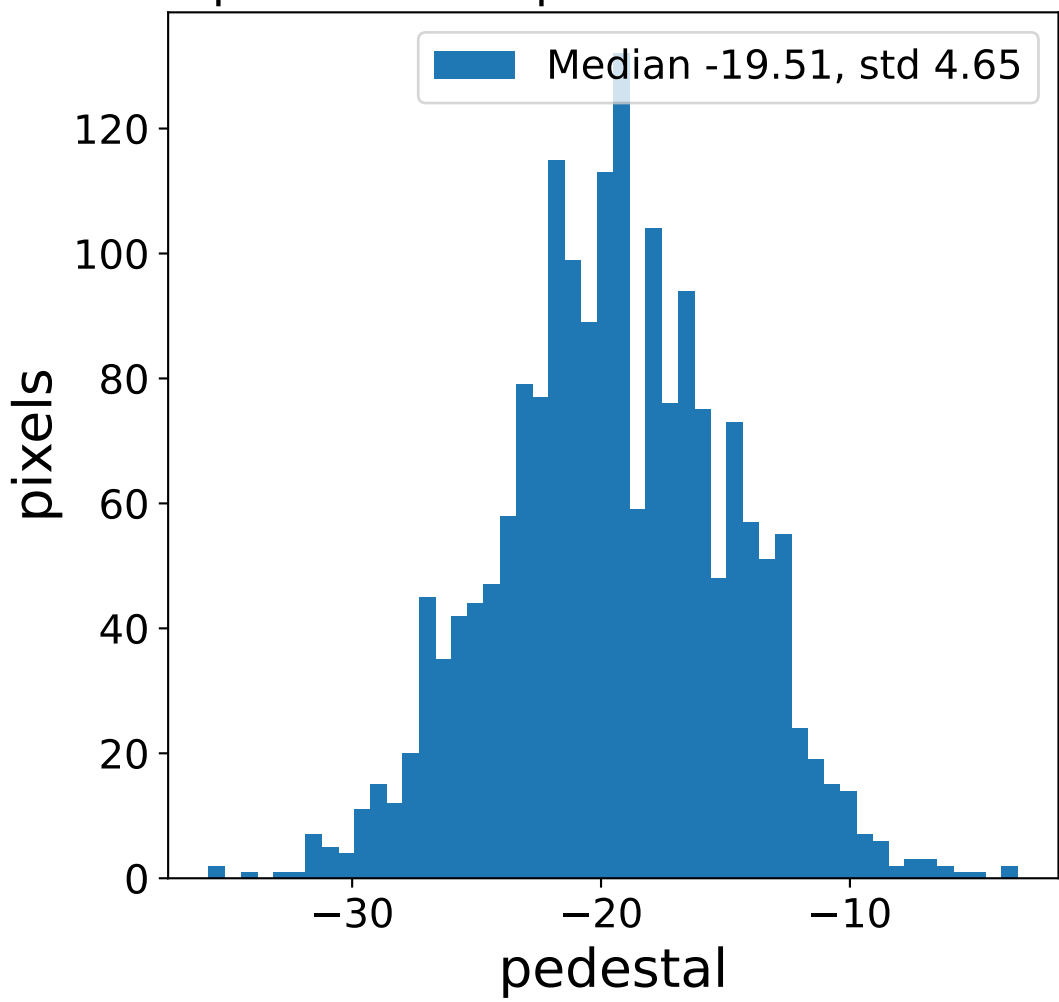


# Run 7667 channel: HG

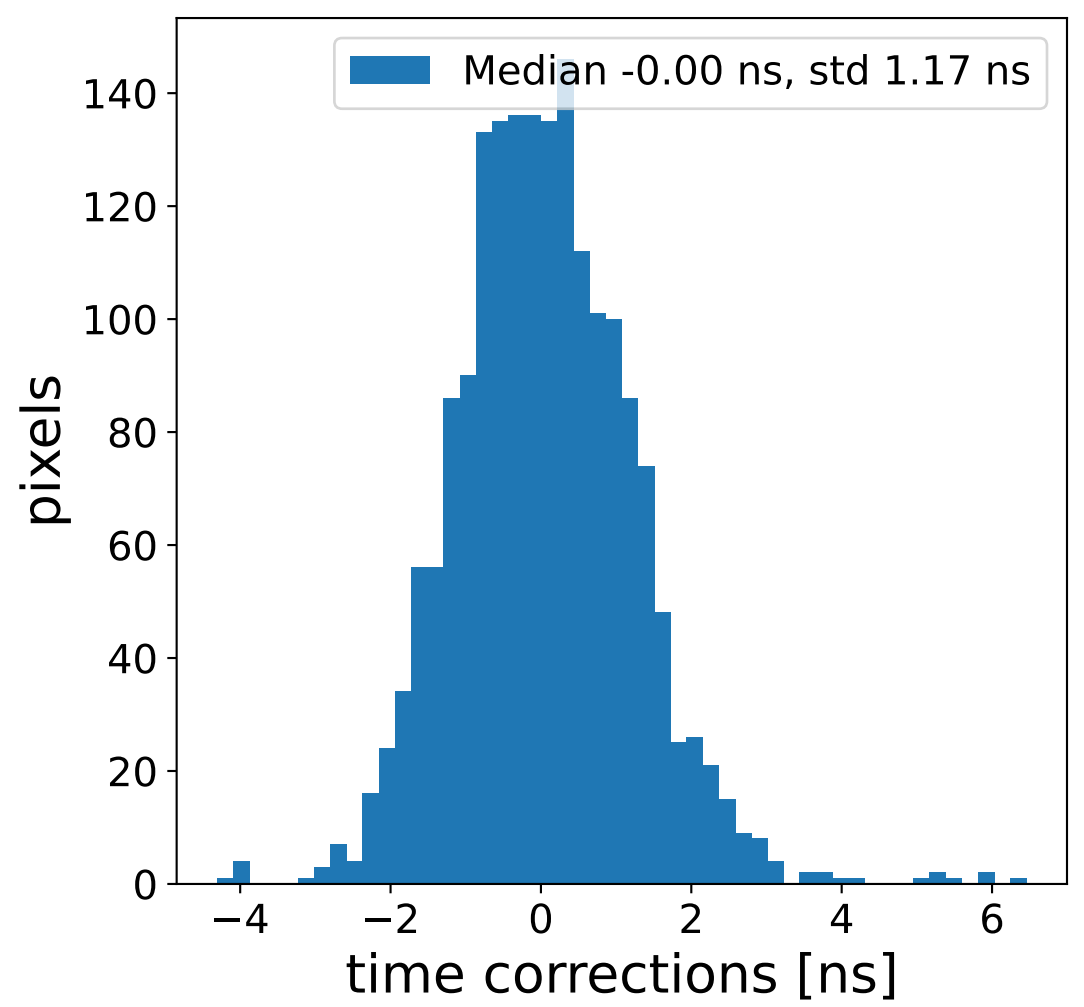
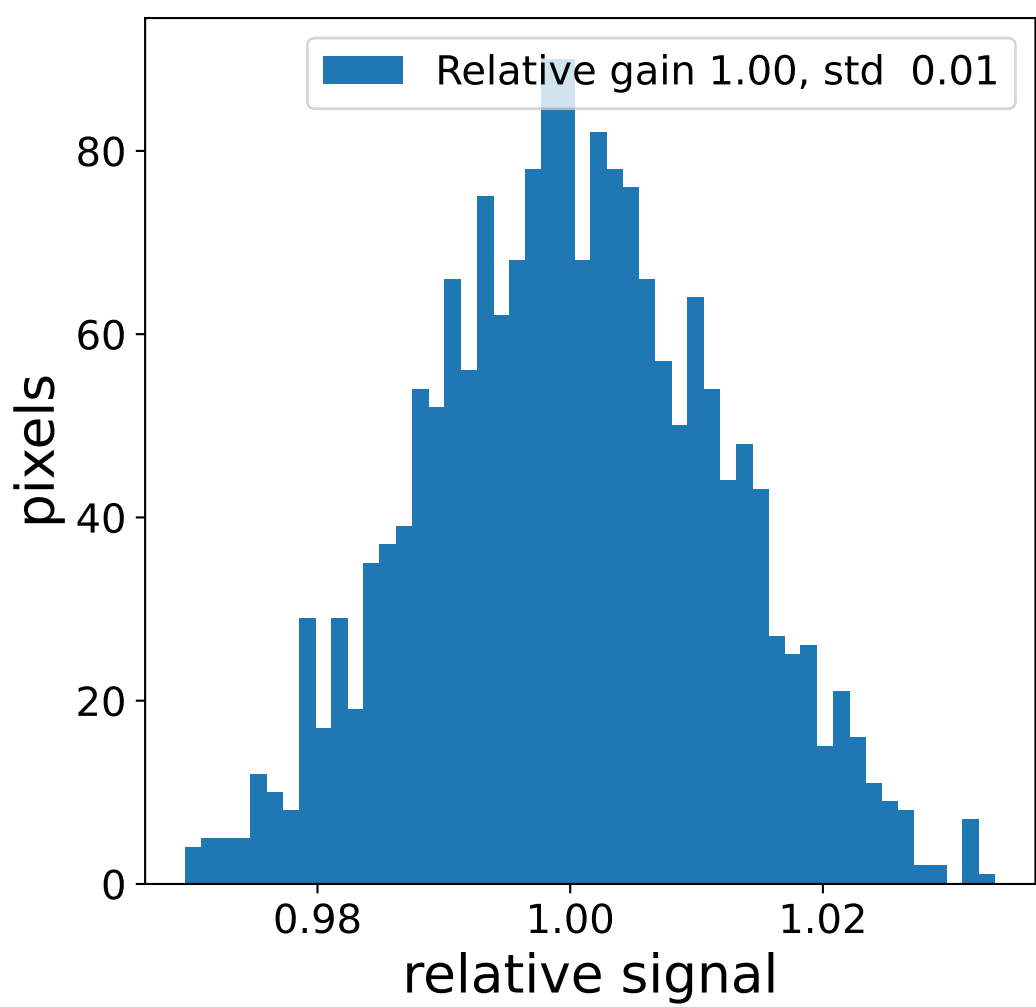
### FF sample of 10000 events



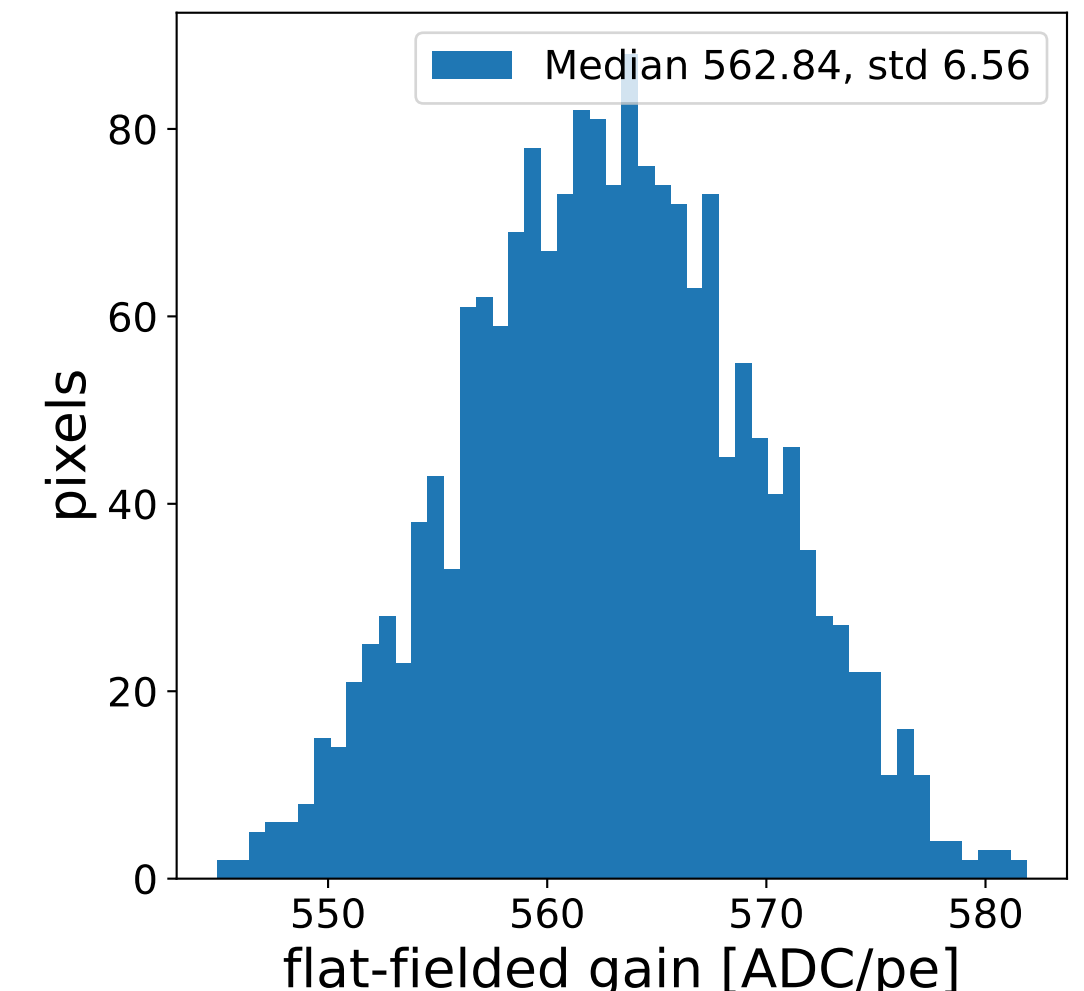
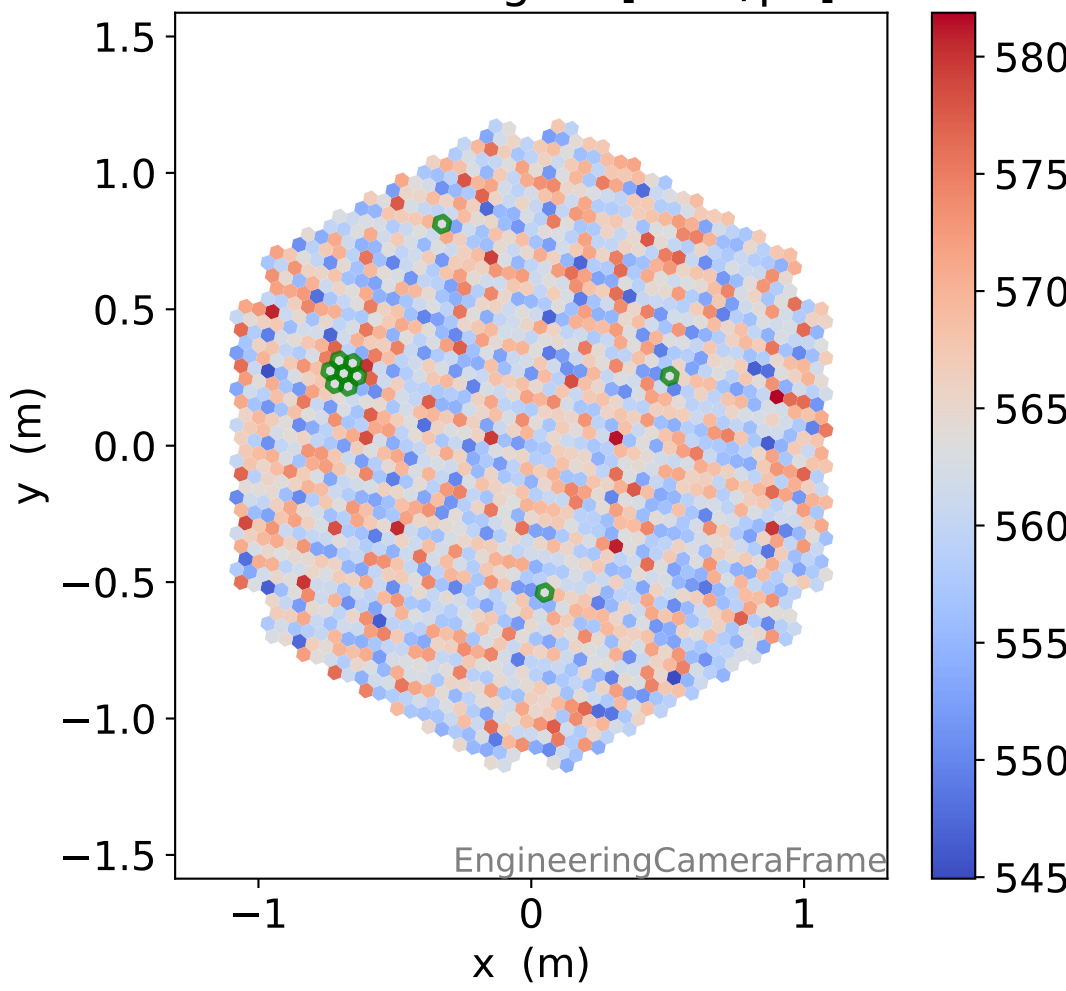
### pedestal sample of 10000 events



### Relative gain 1.00, std 0.01

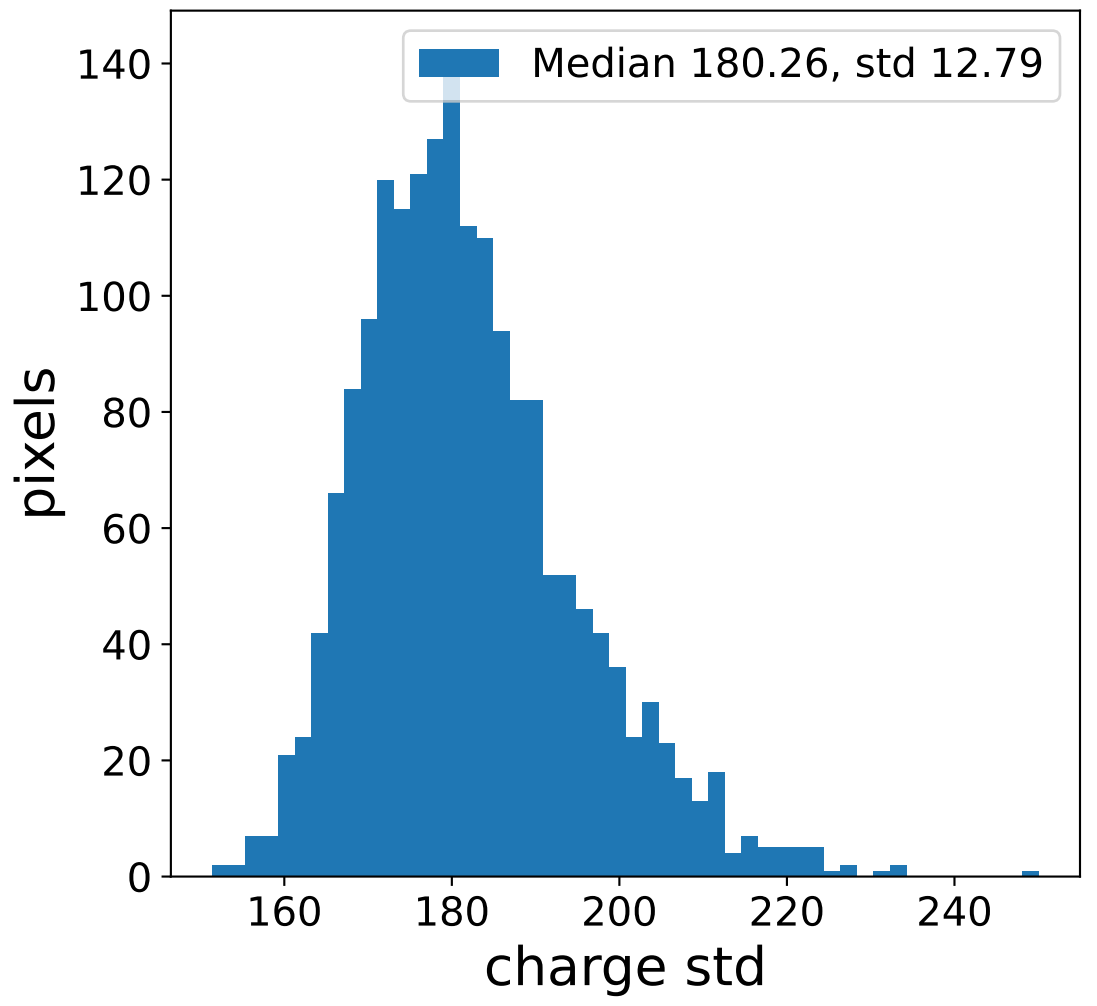
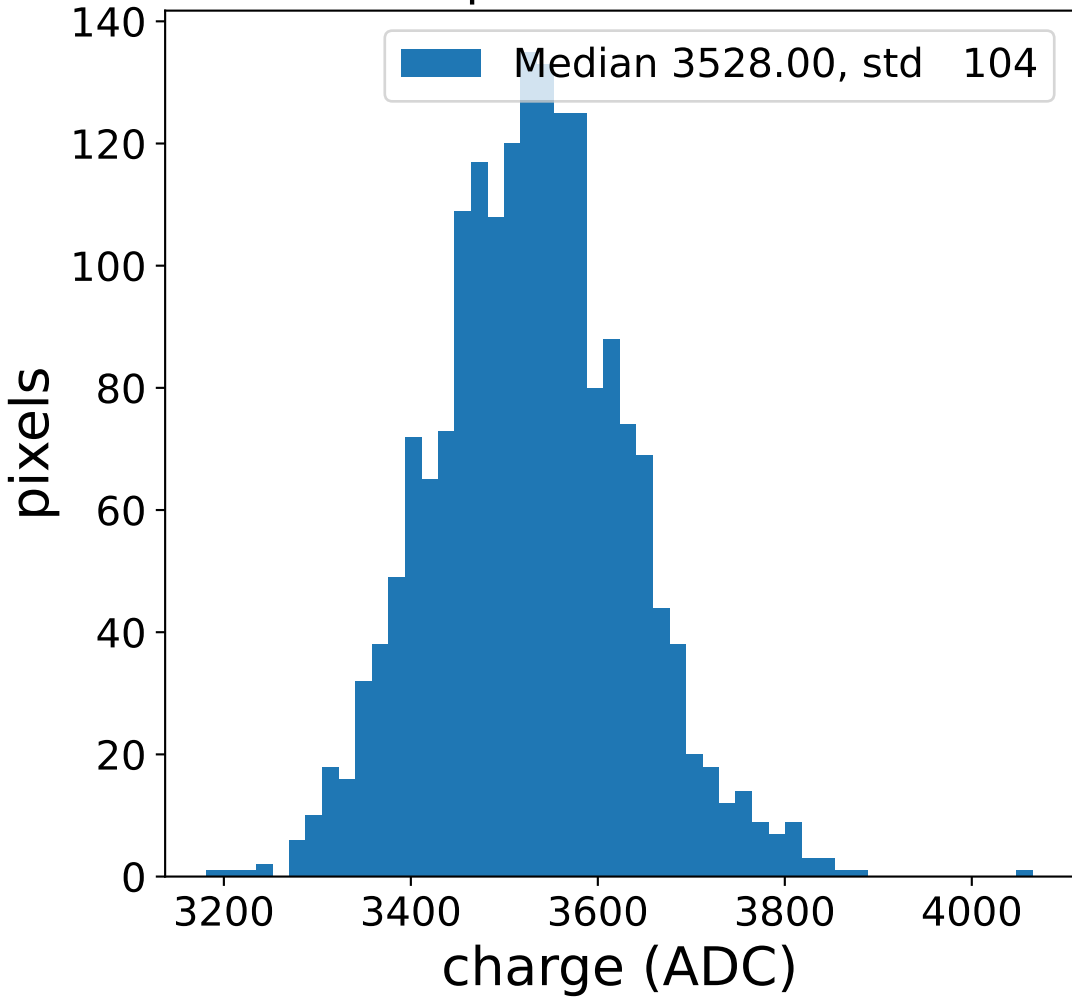


### flat-fielded gain [ADC/pe]

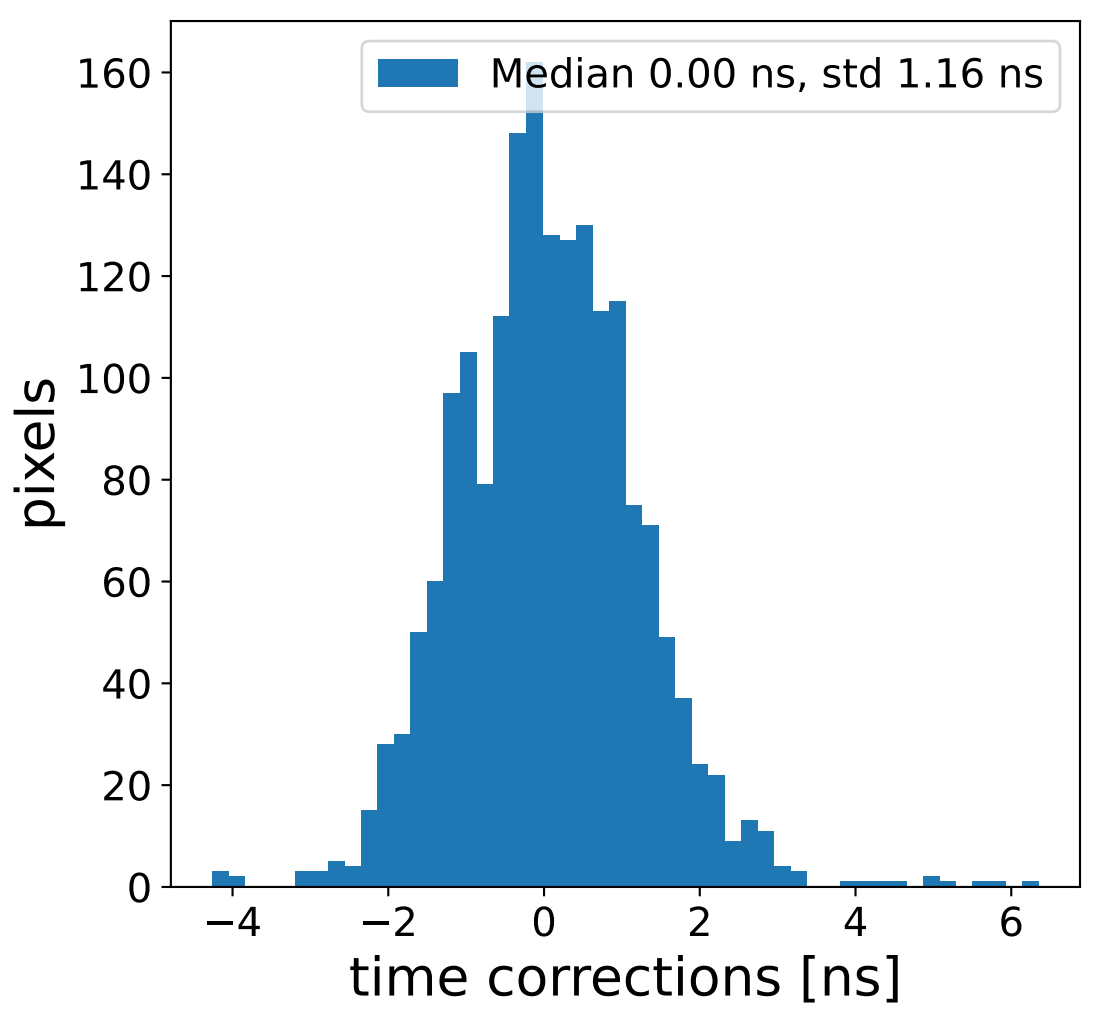
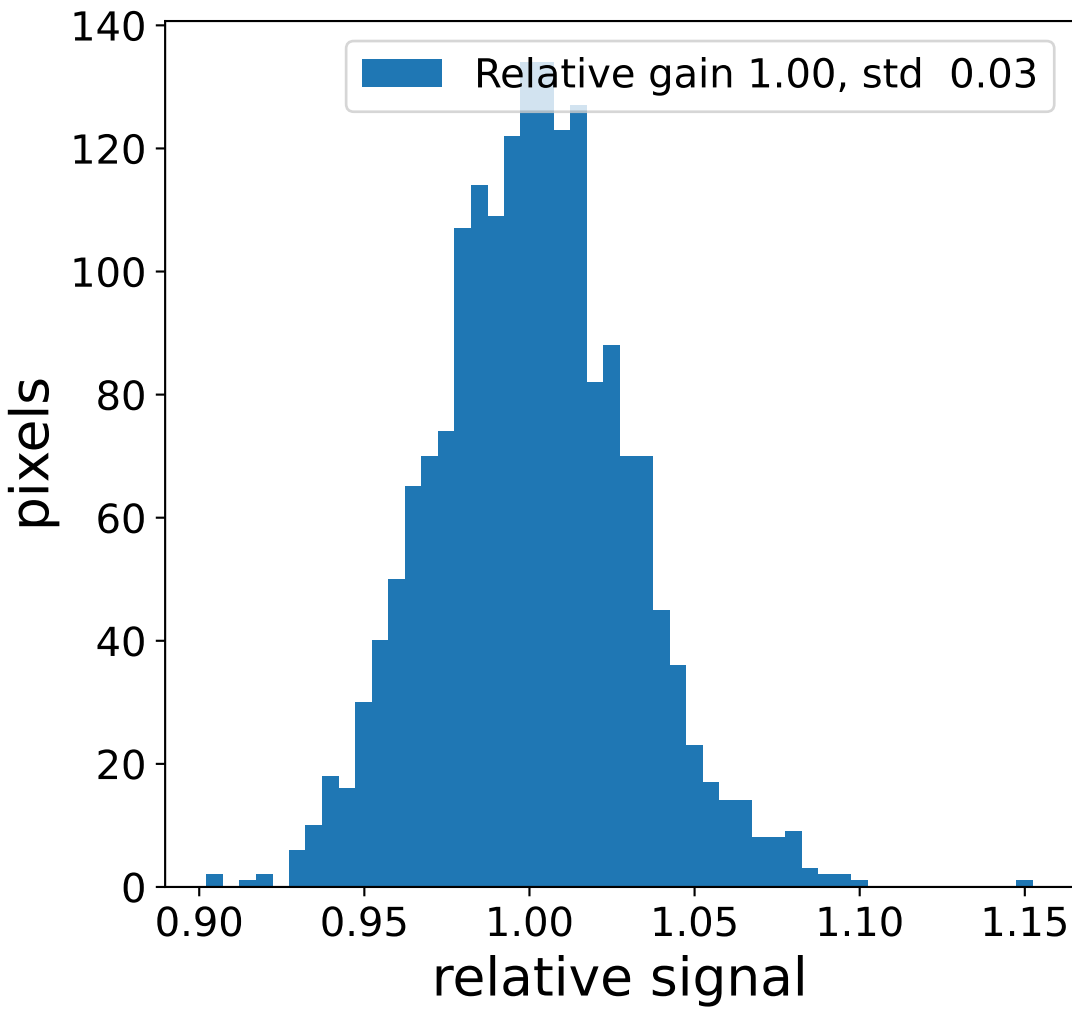
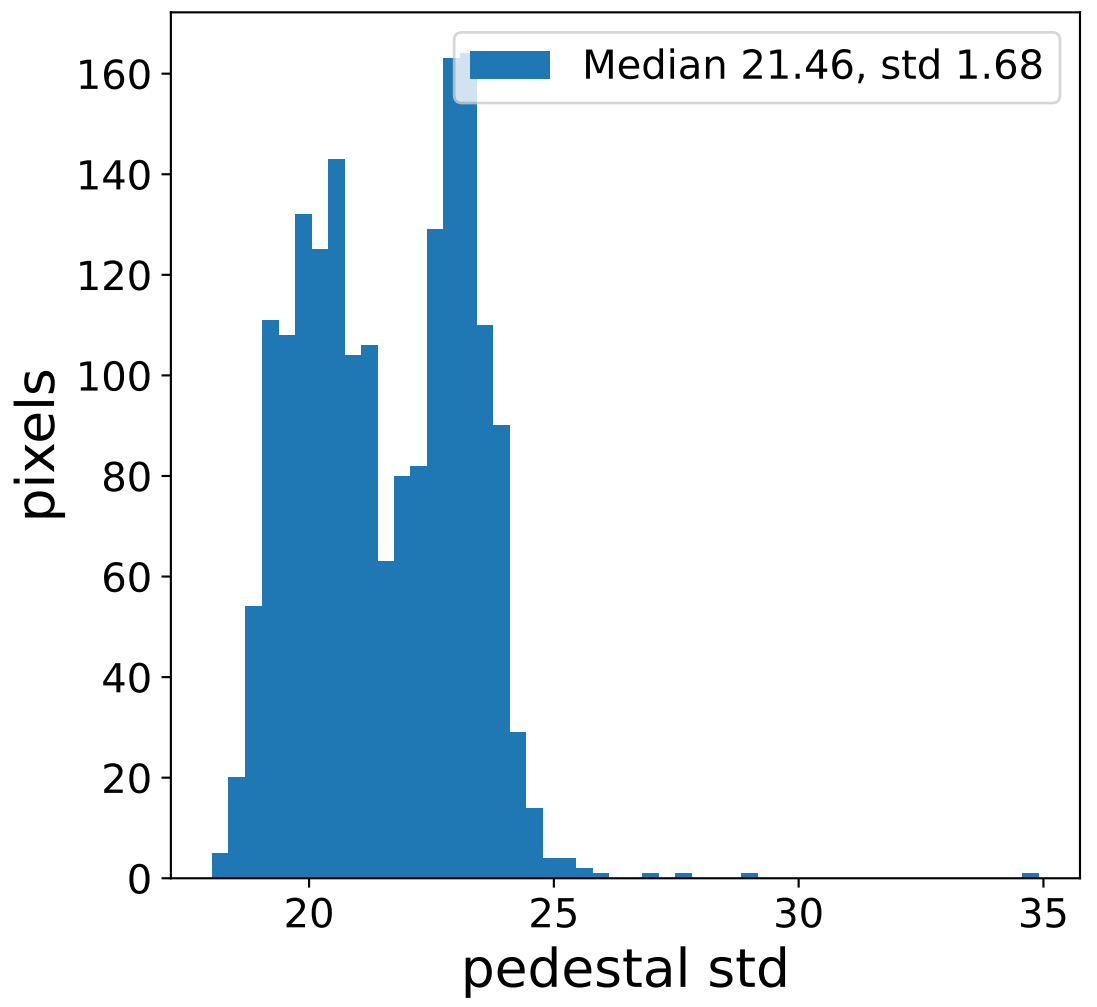
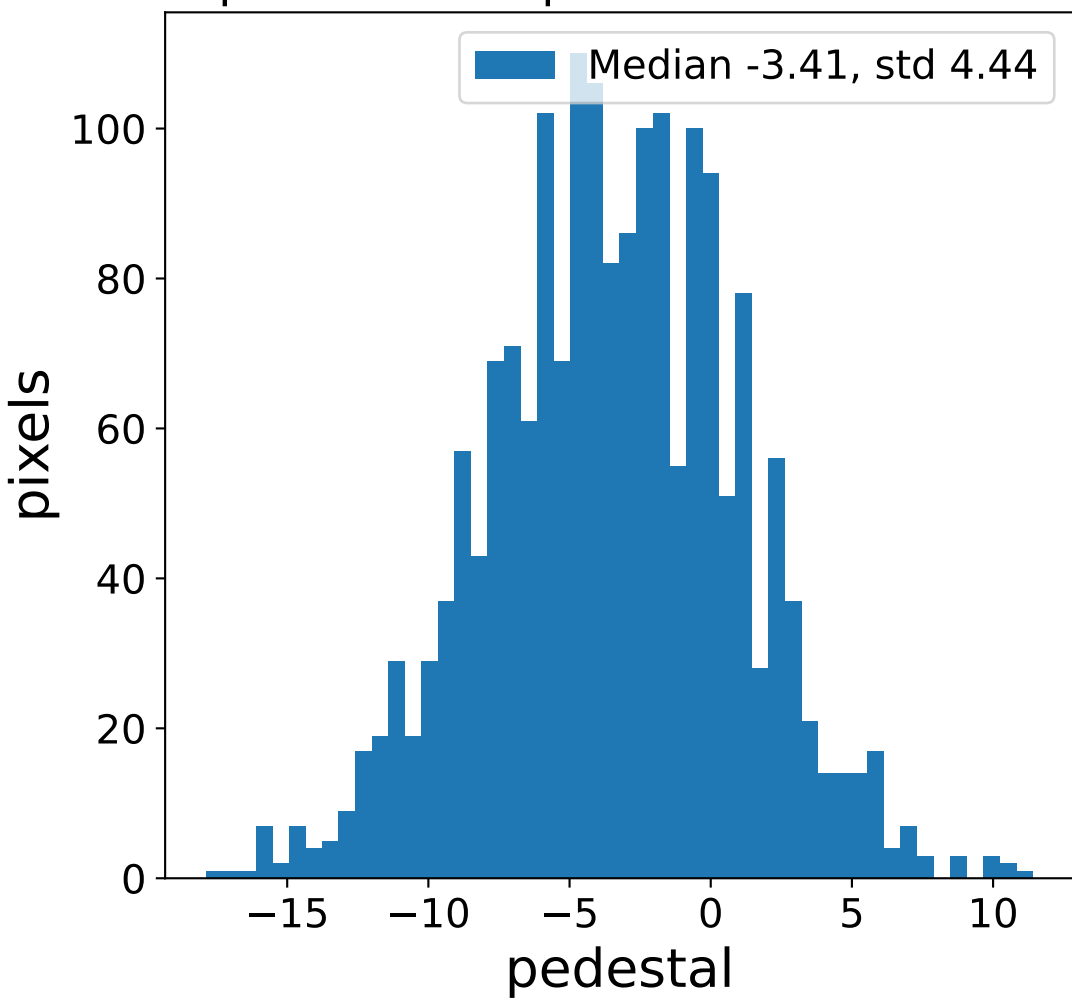


# Run 7667 channel: LG

### FF sample of 10000 events



### pedestal sample of 10000 events



### flat-fielded gain [ADC/pe]

