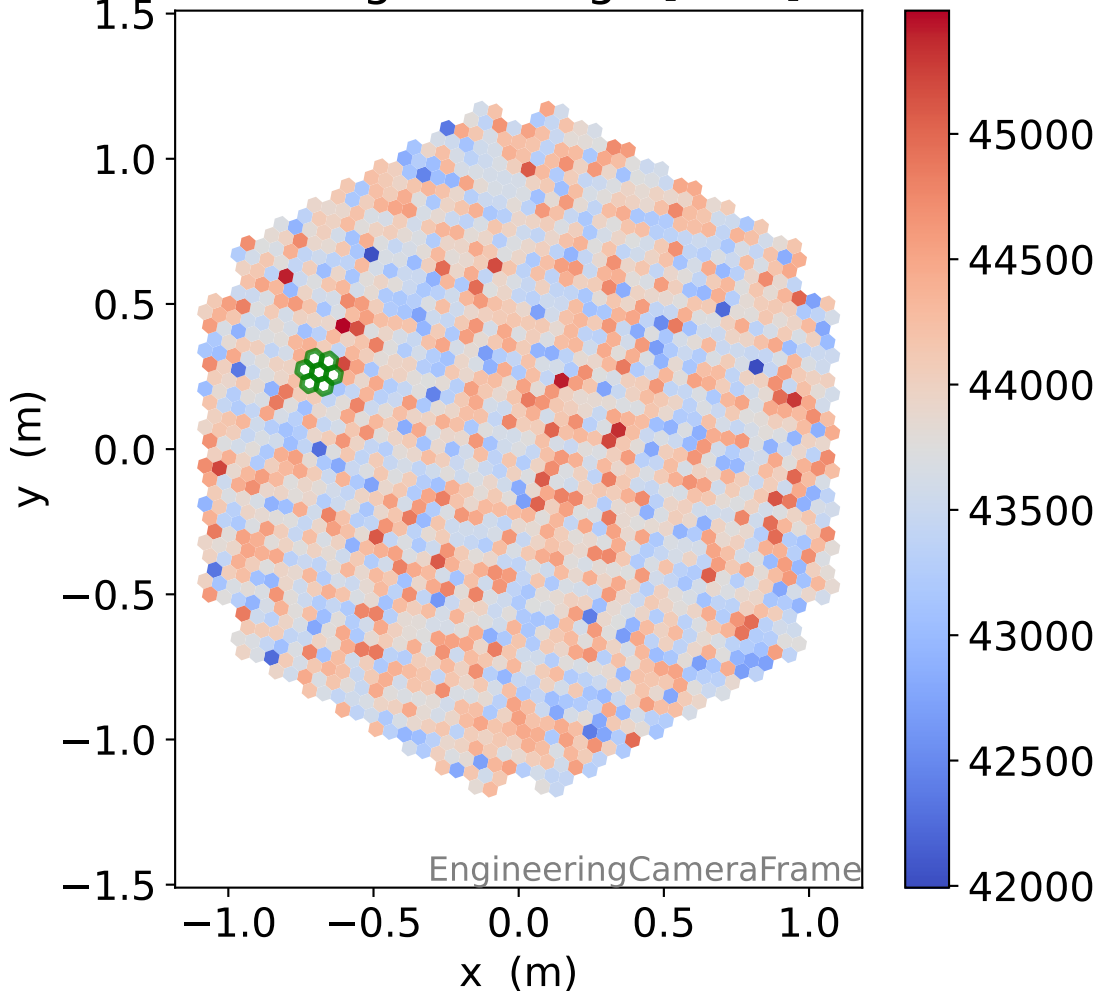
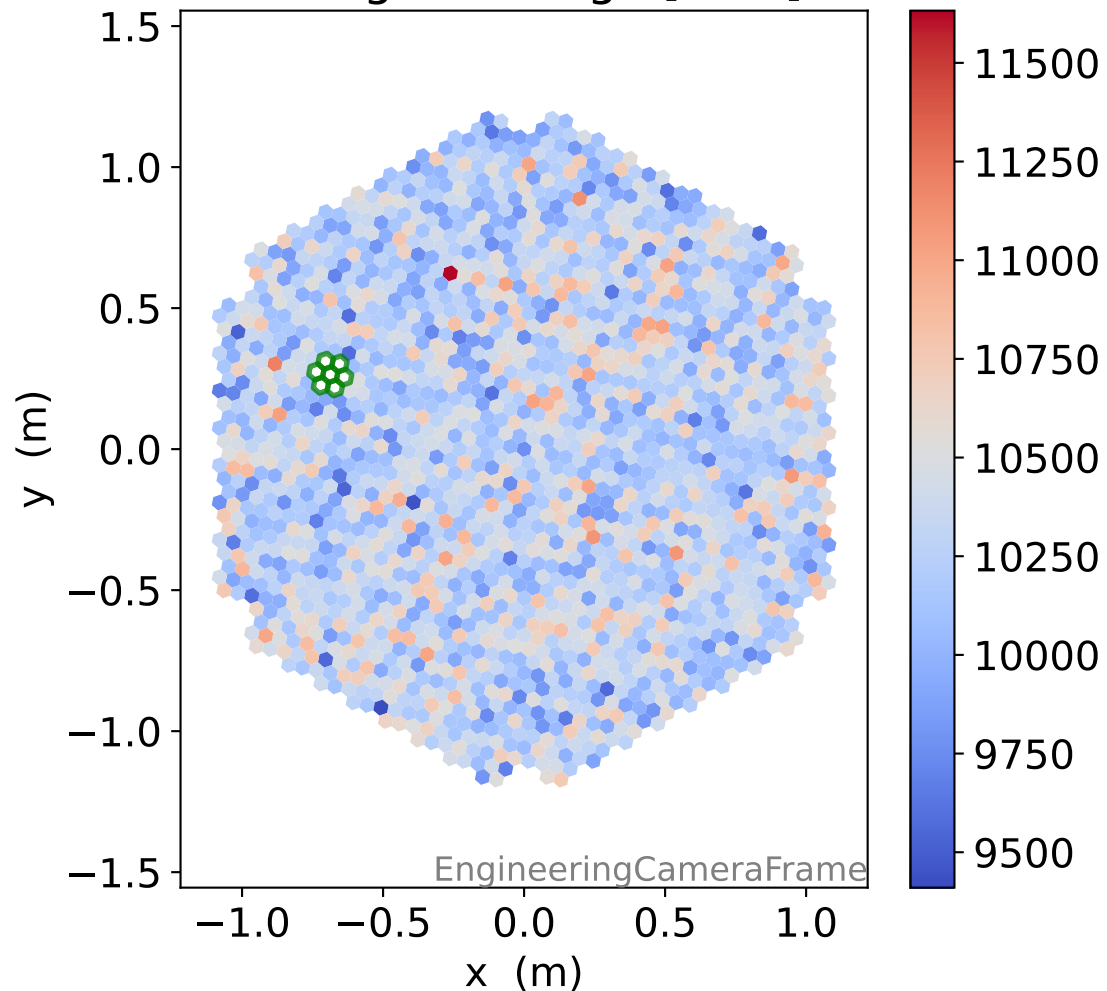


# Run 7541

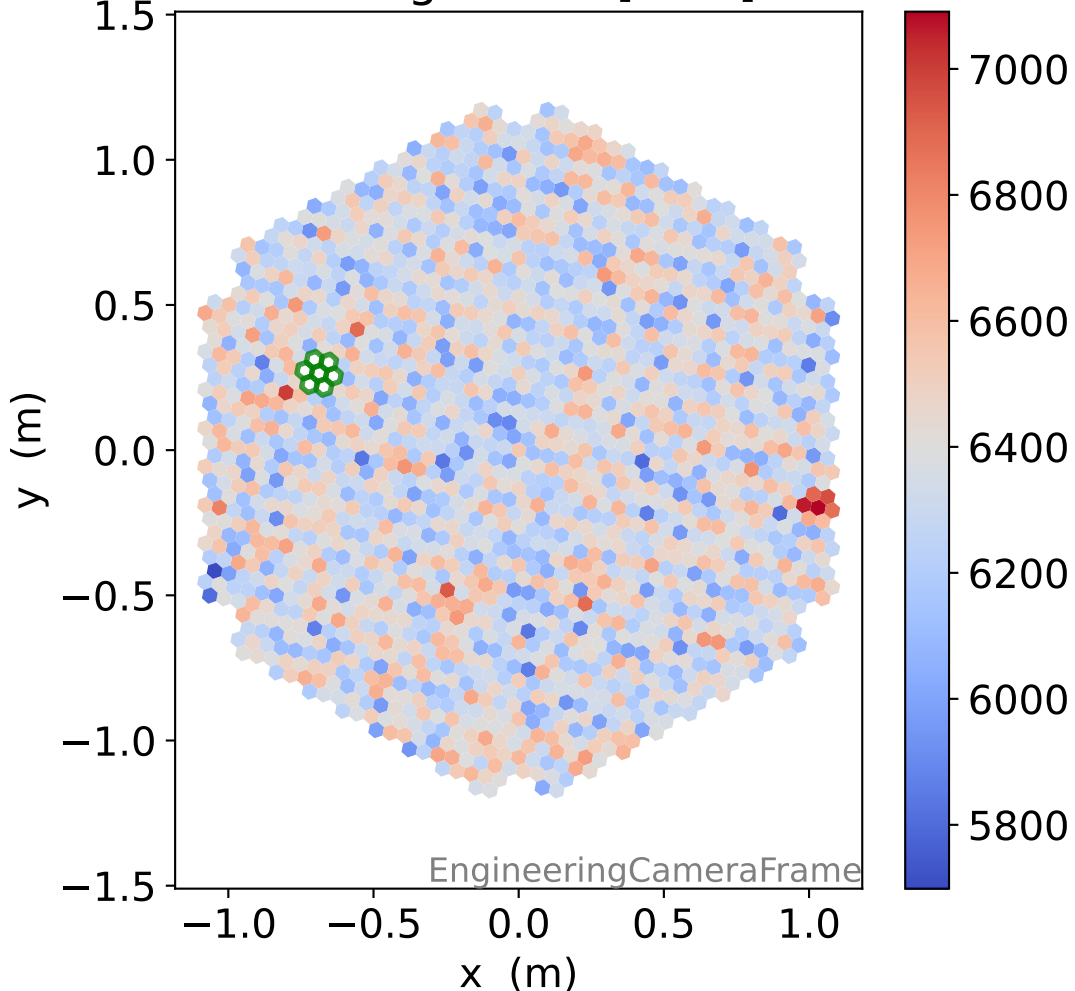
### HG signal charge [ADC]



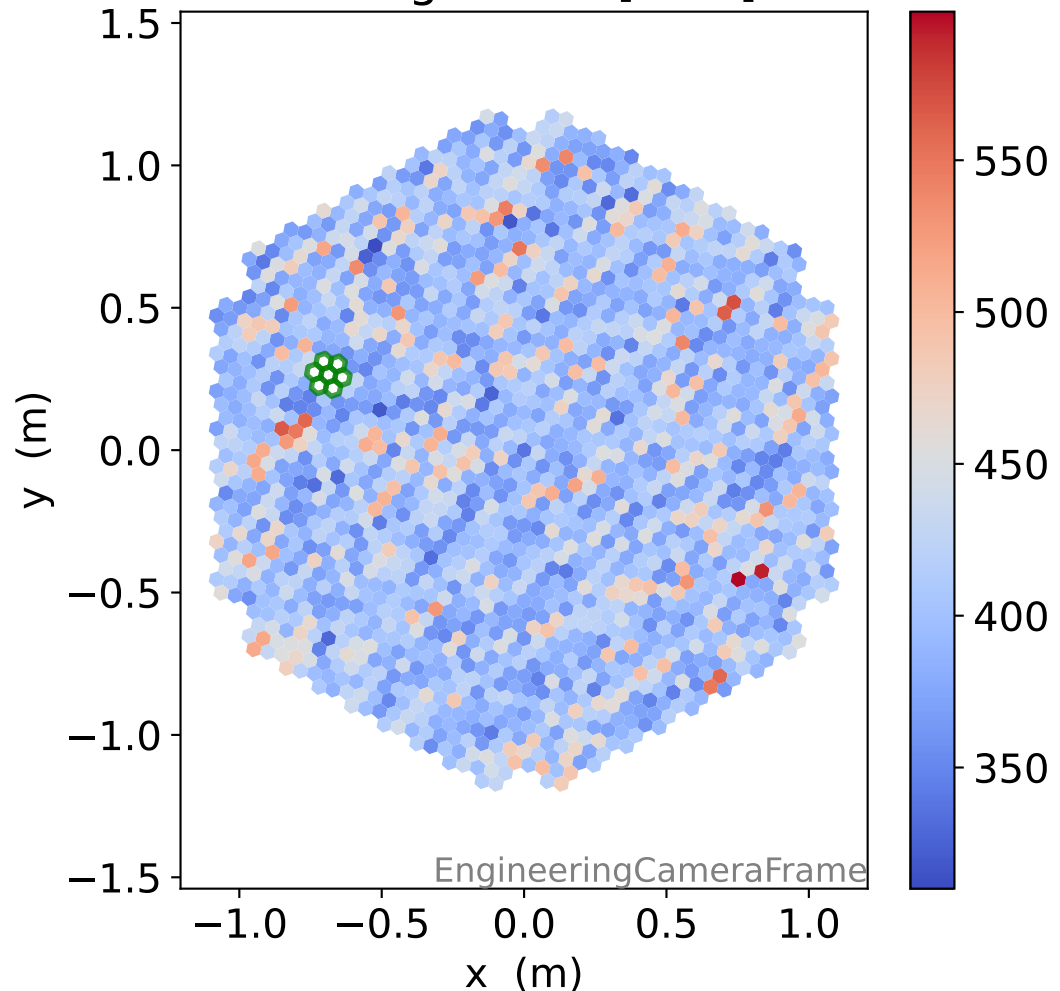
### LG signal charge [ADC]



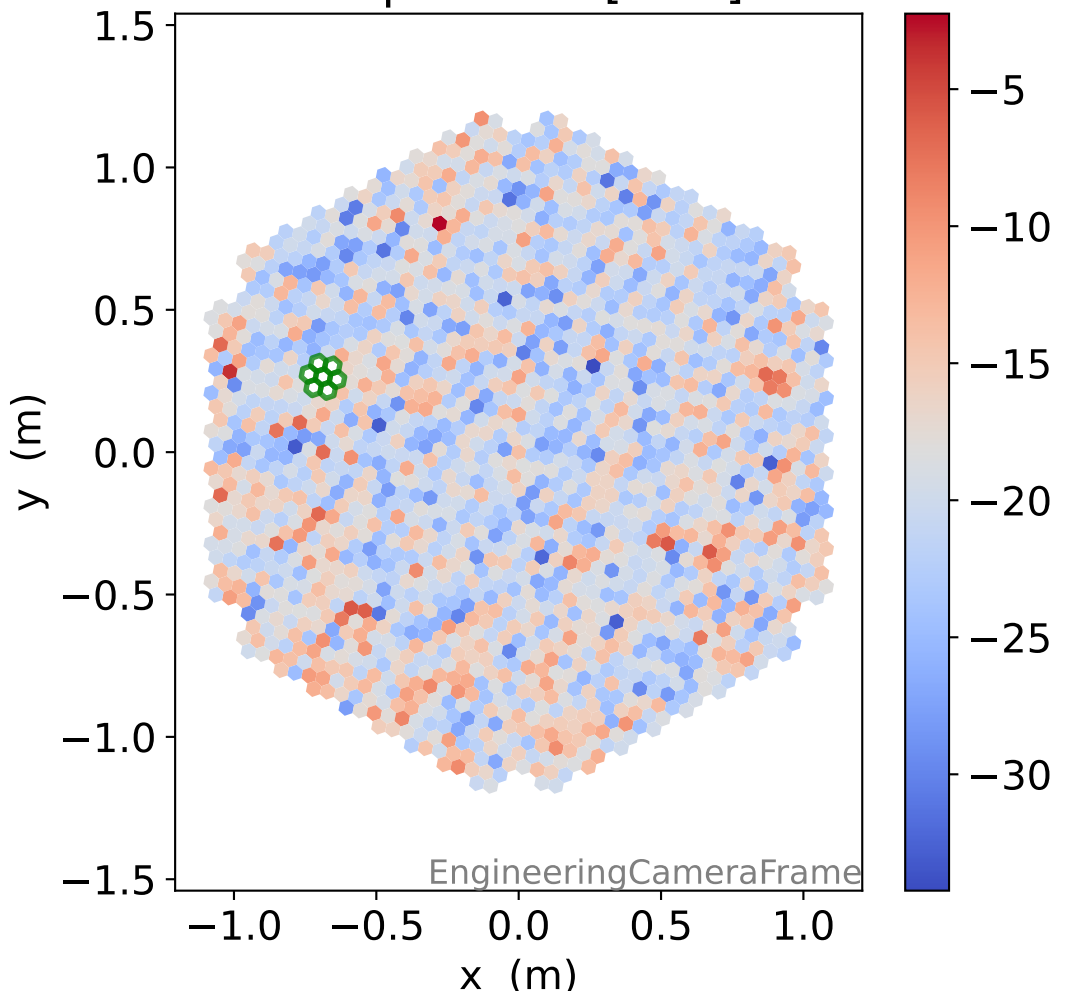
### HG signal std [ADC]



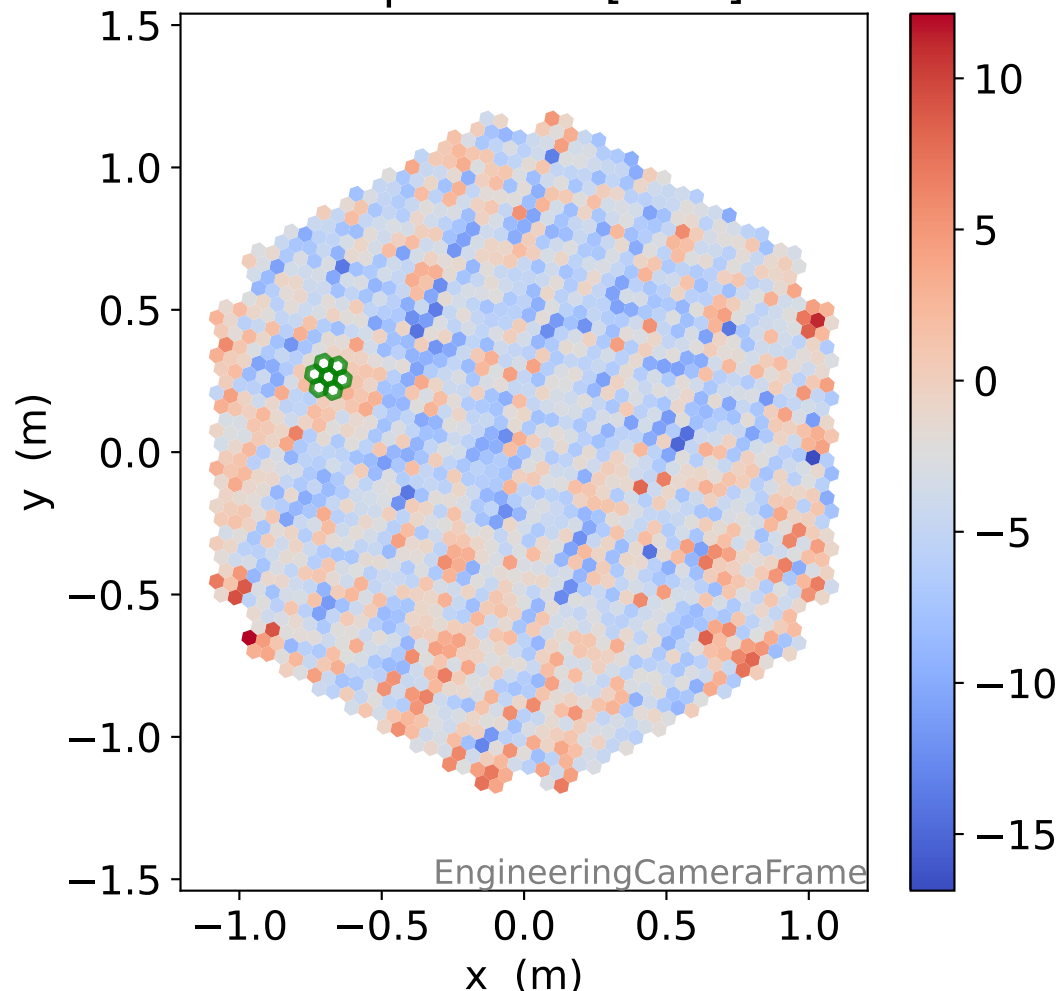
### LG signal std [ADC]



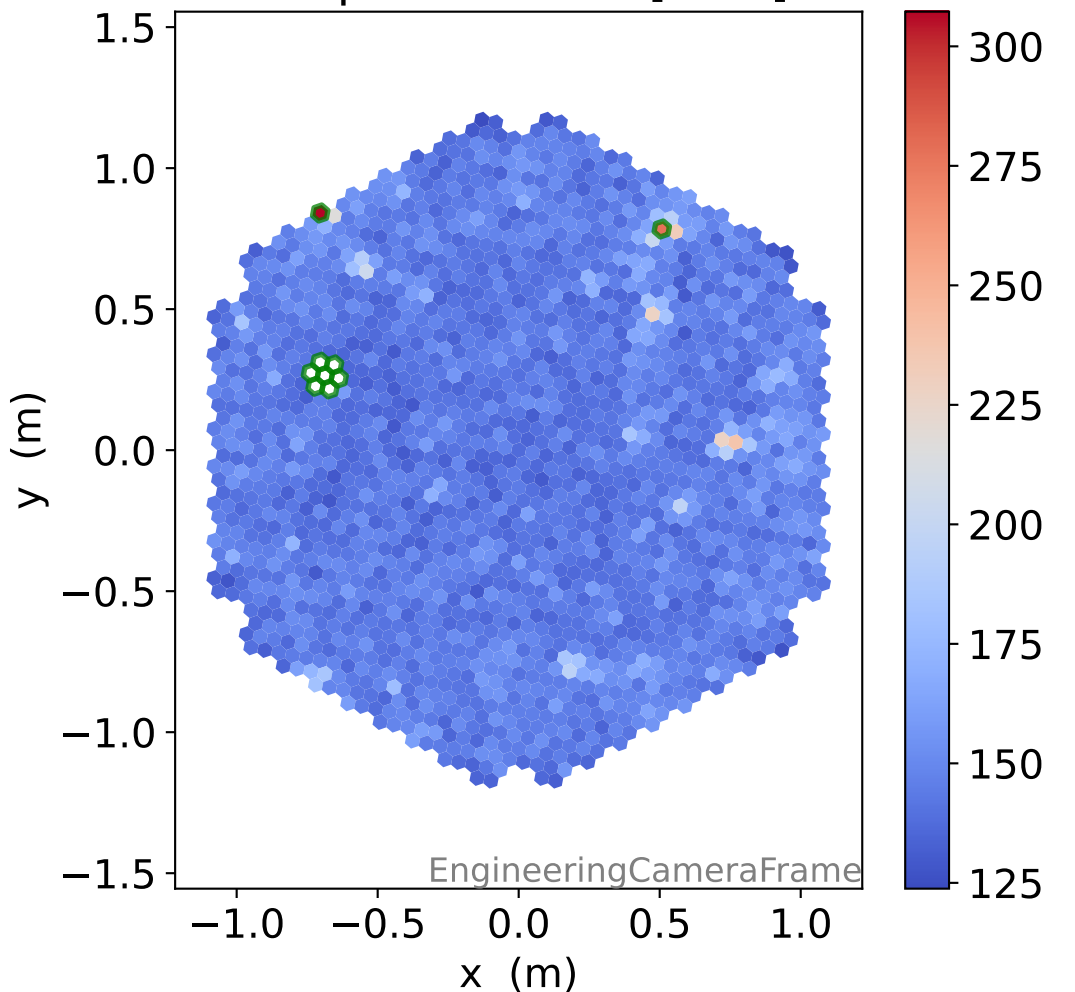
### HG pedestal [ADC]



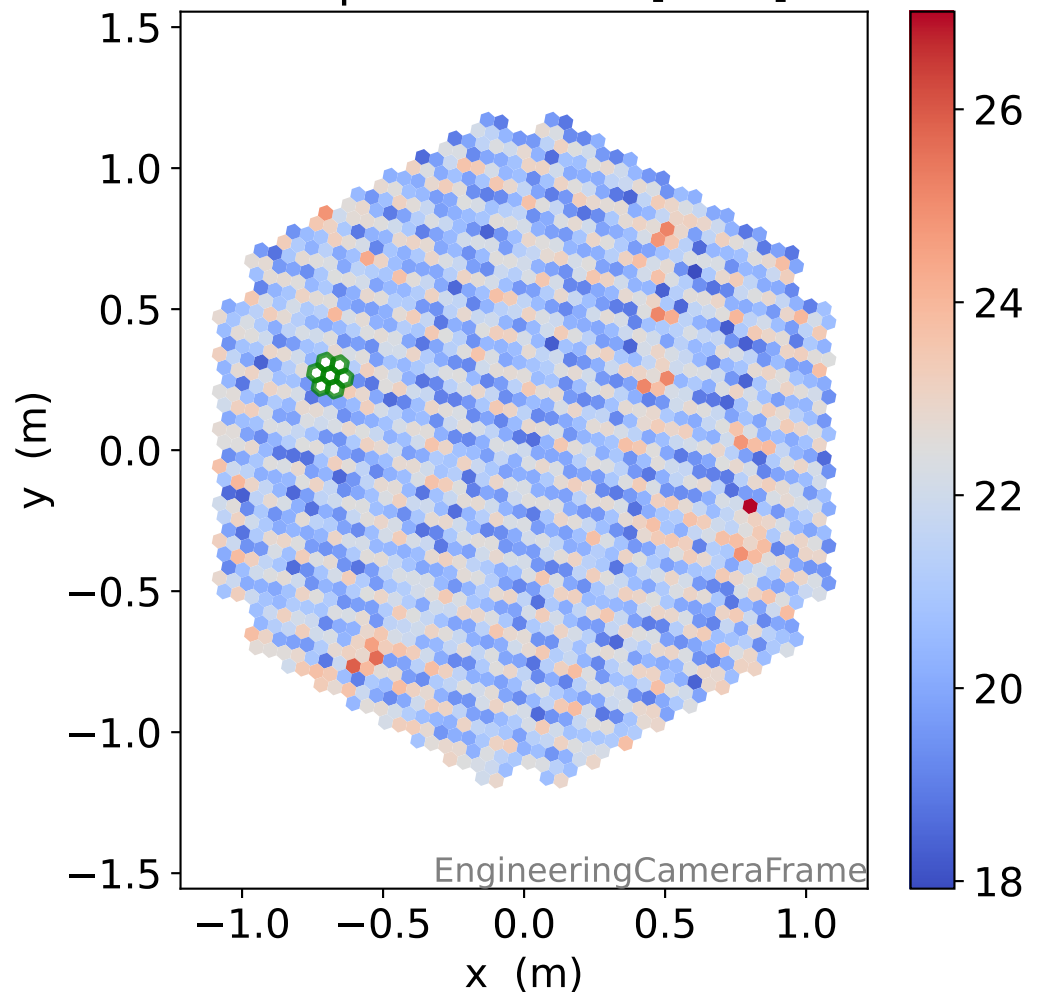
### LG pedestal [ADC]



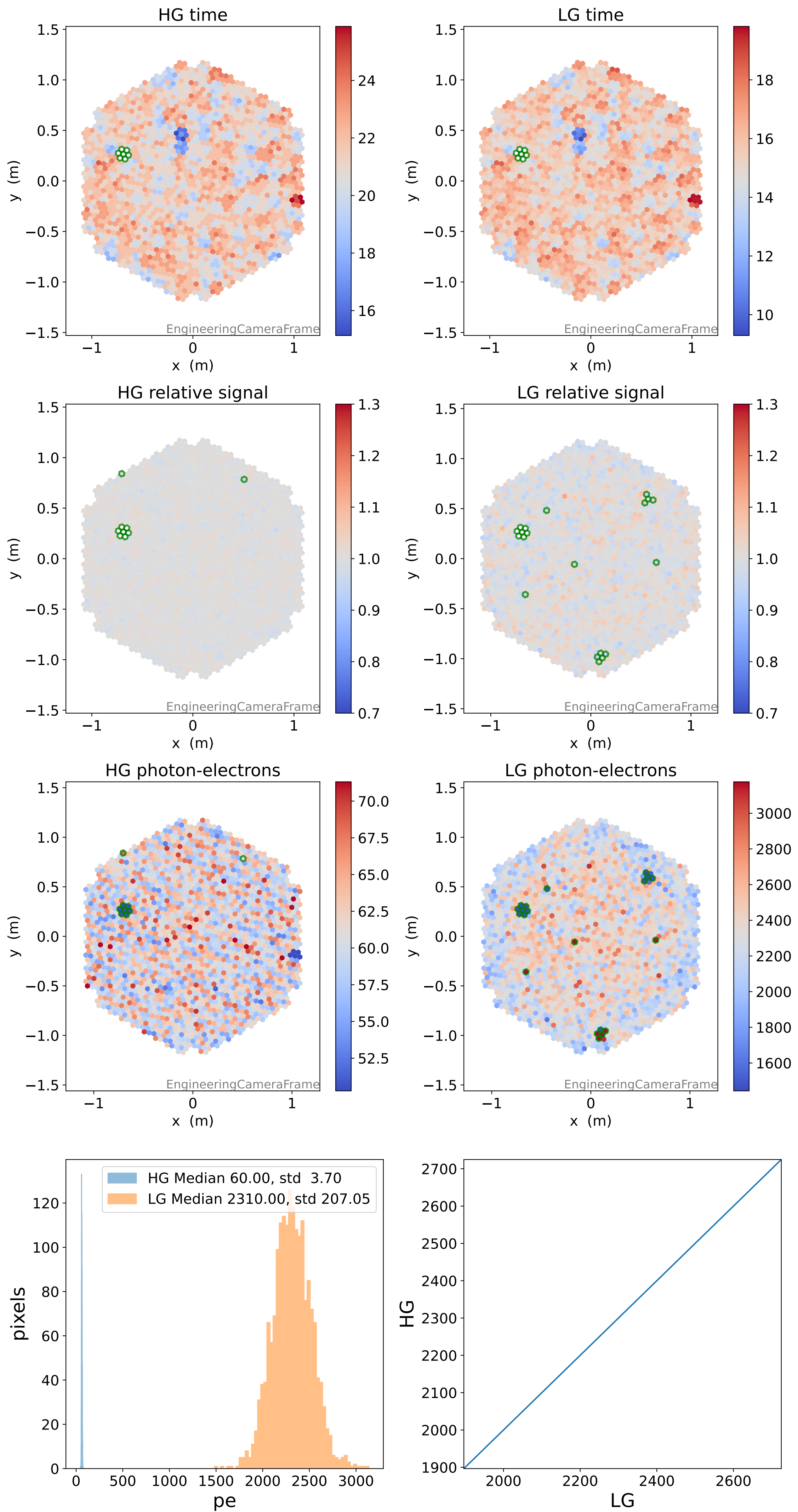
### HG pedestal std [ADC]



### LG pedestal std [ADC]

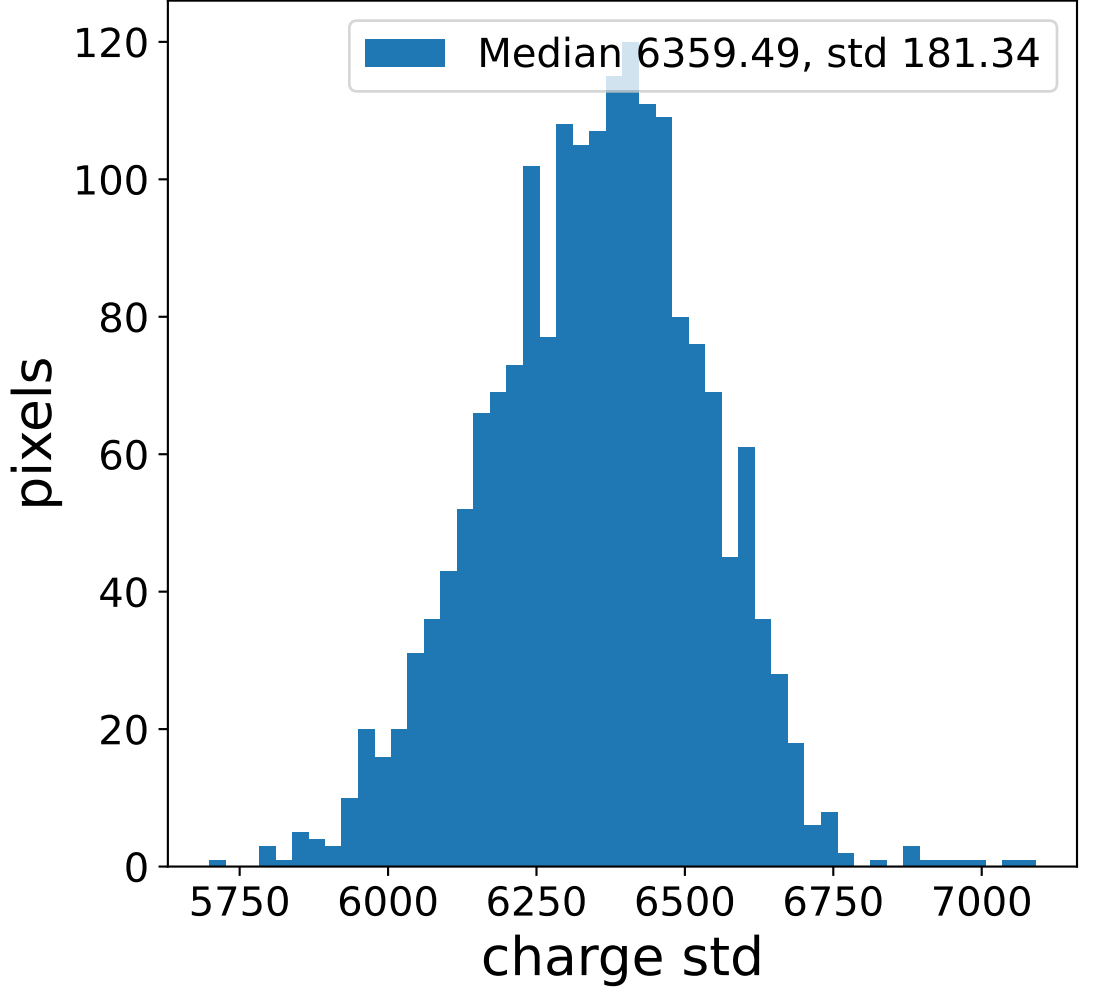
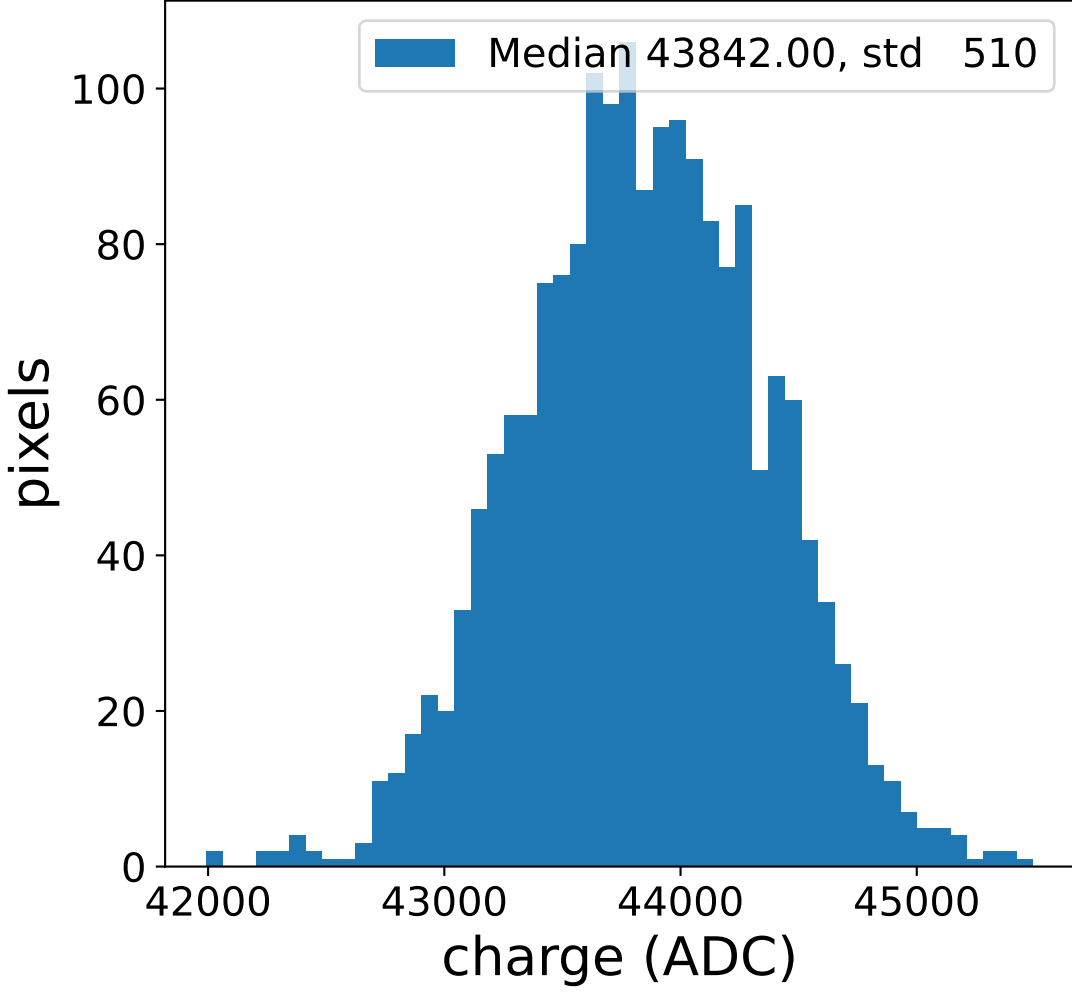


# Run 7541

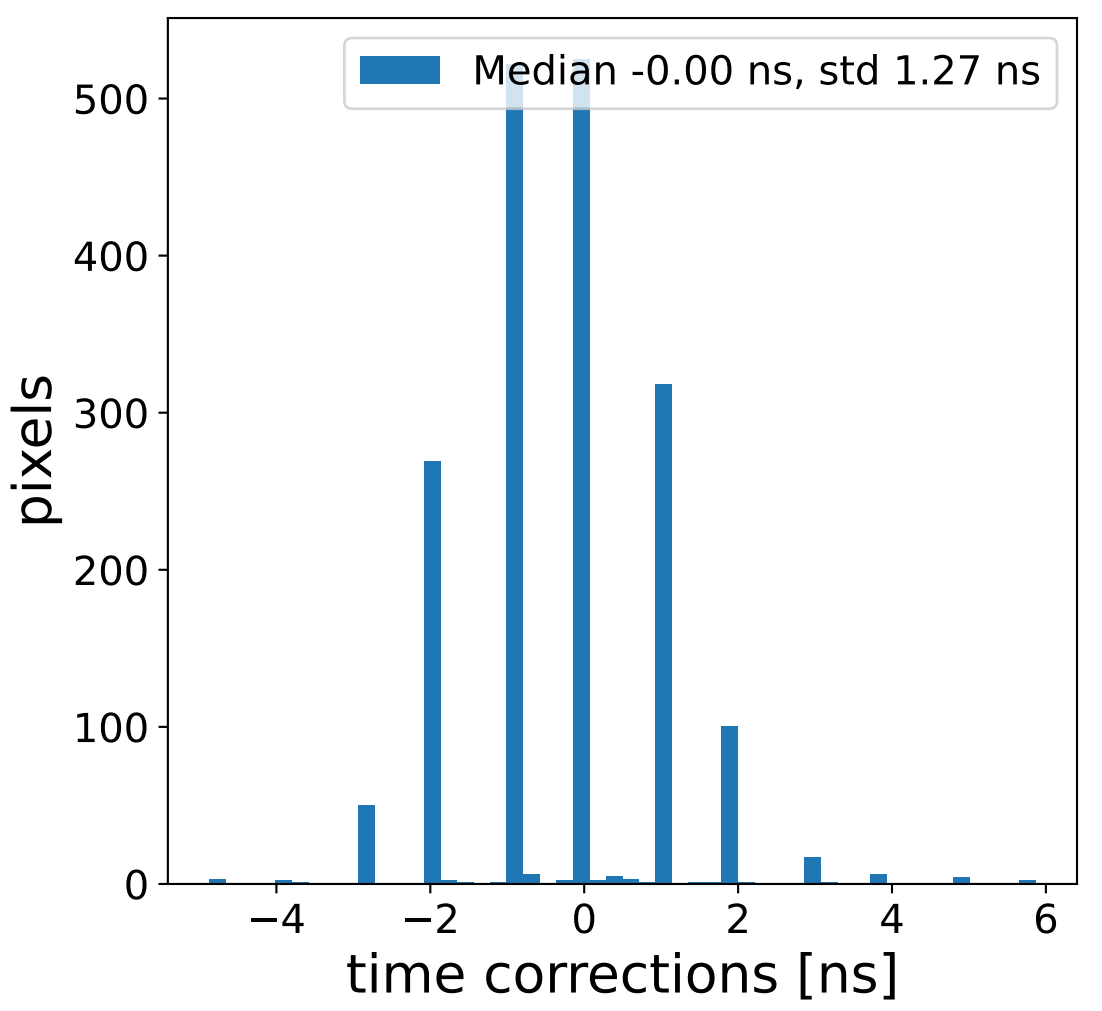
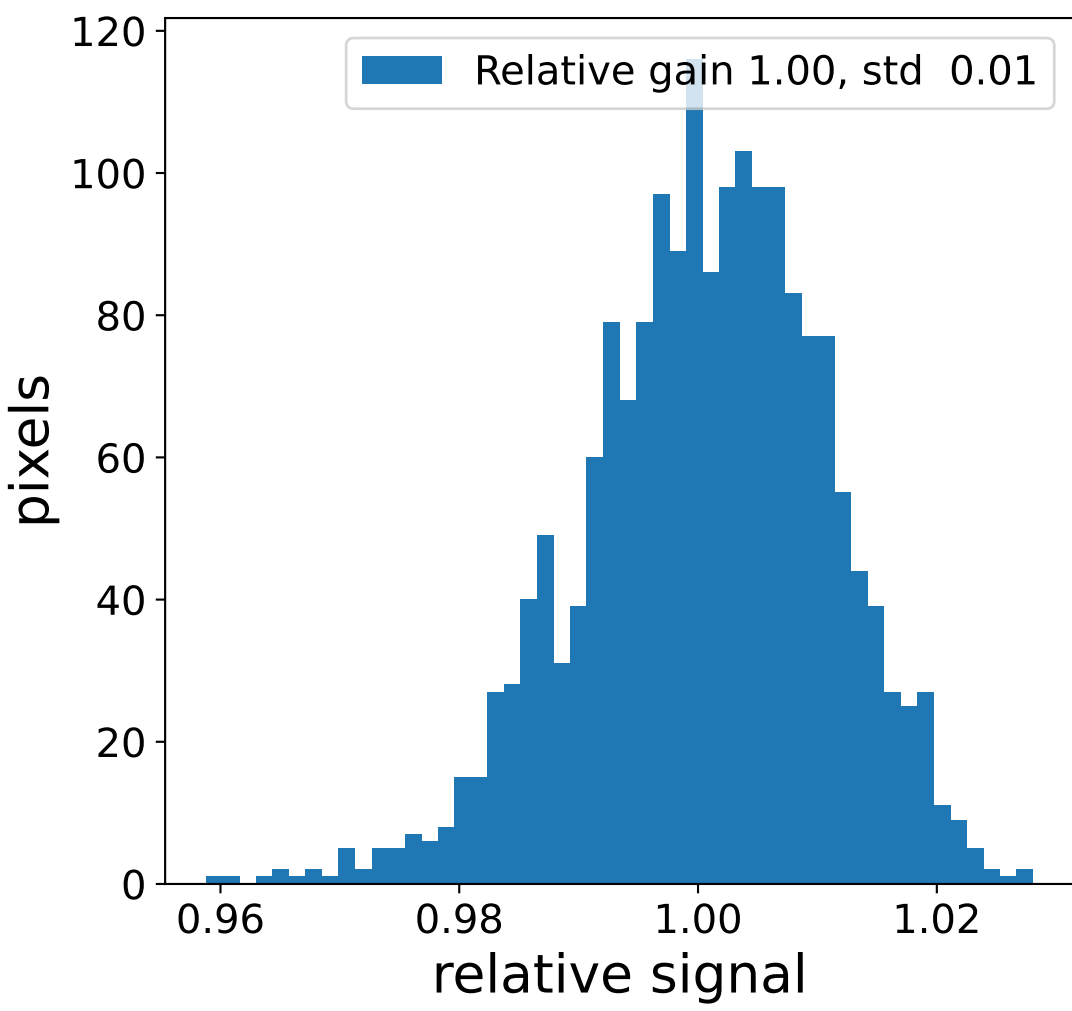
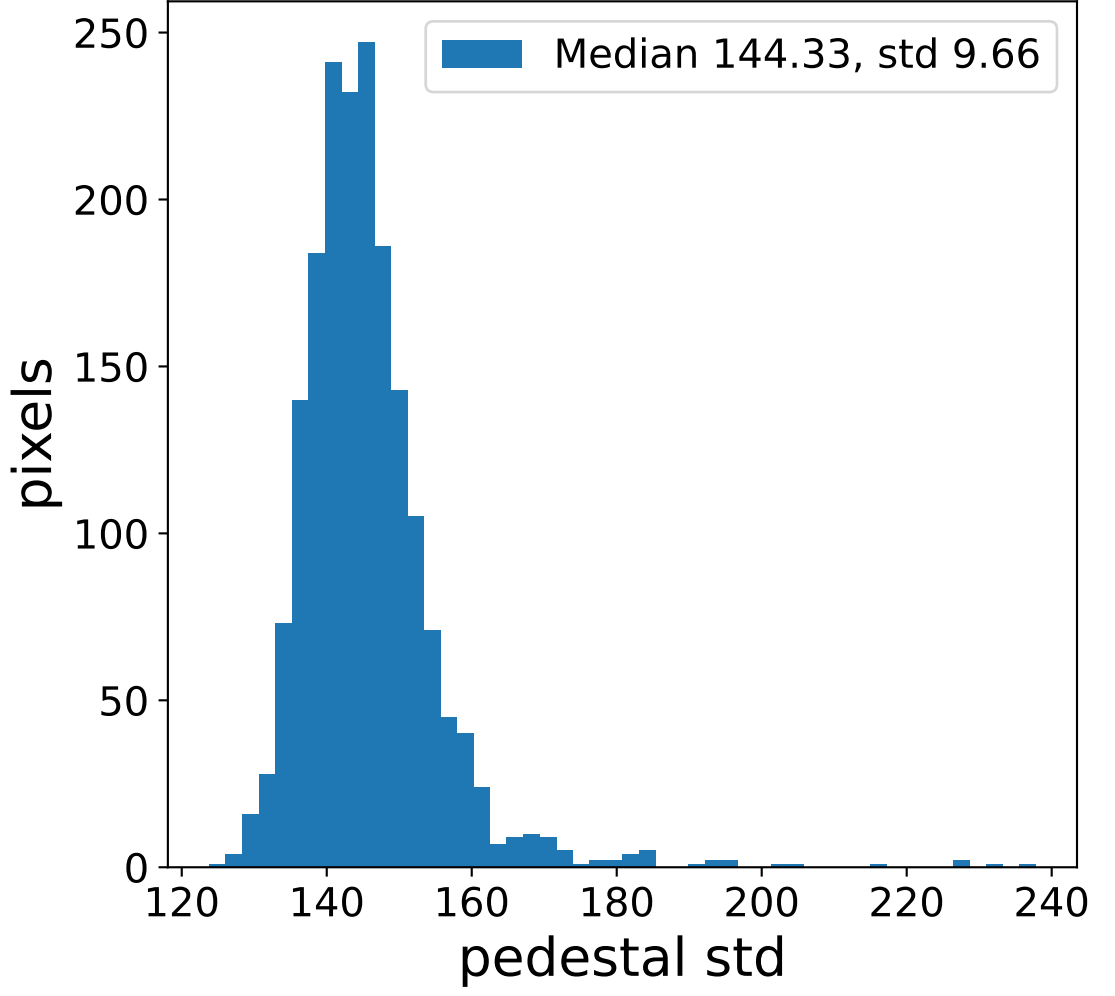
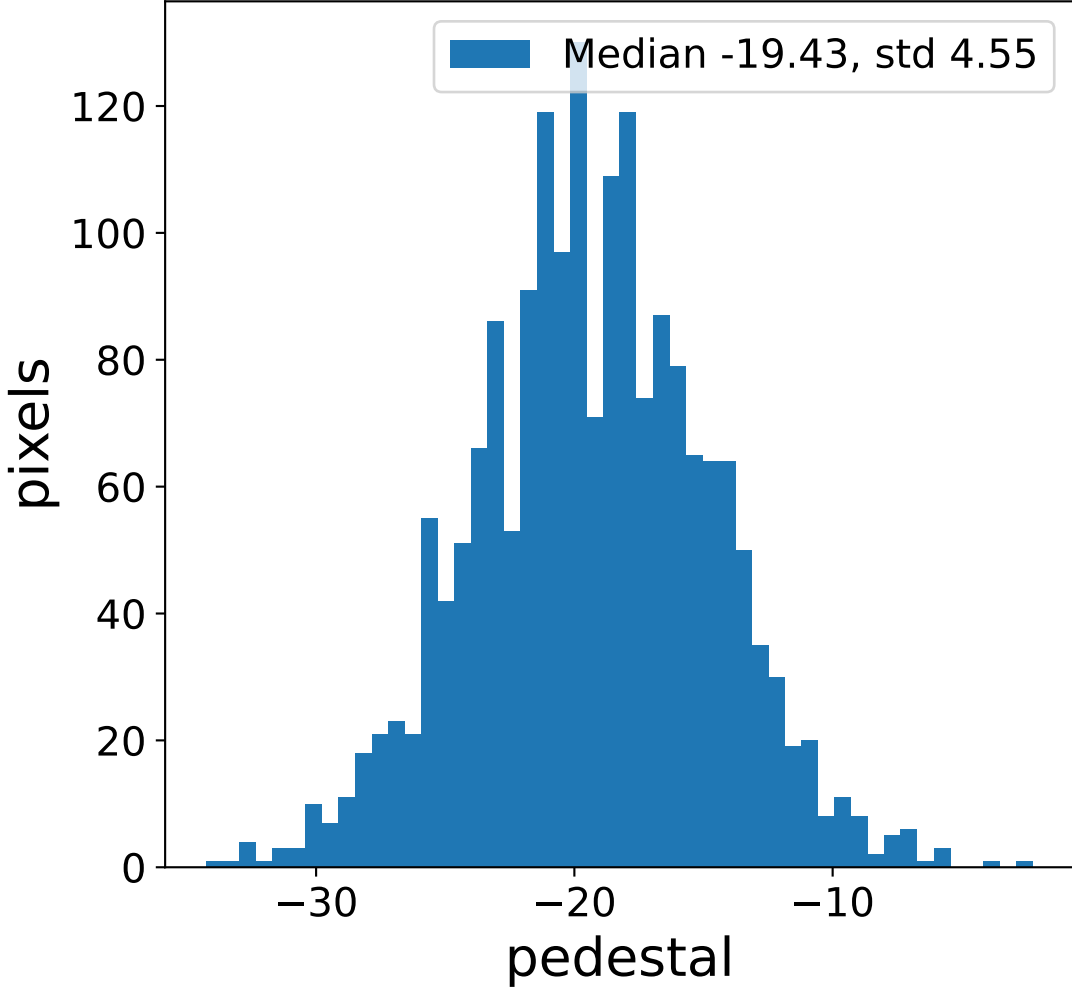


# Run 7541 channel: HG

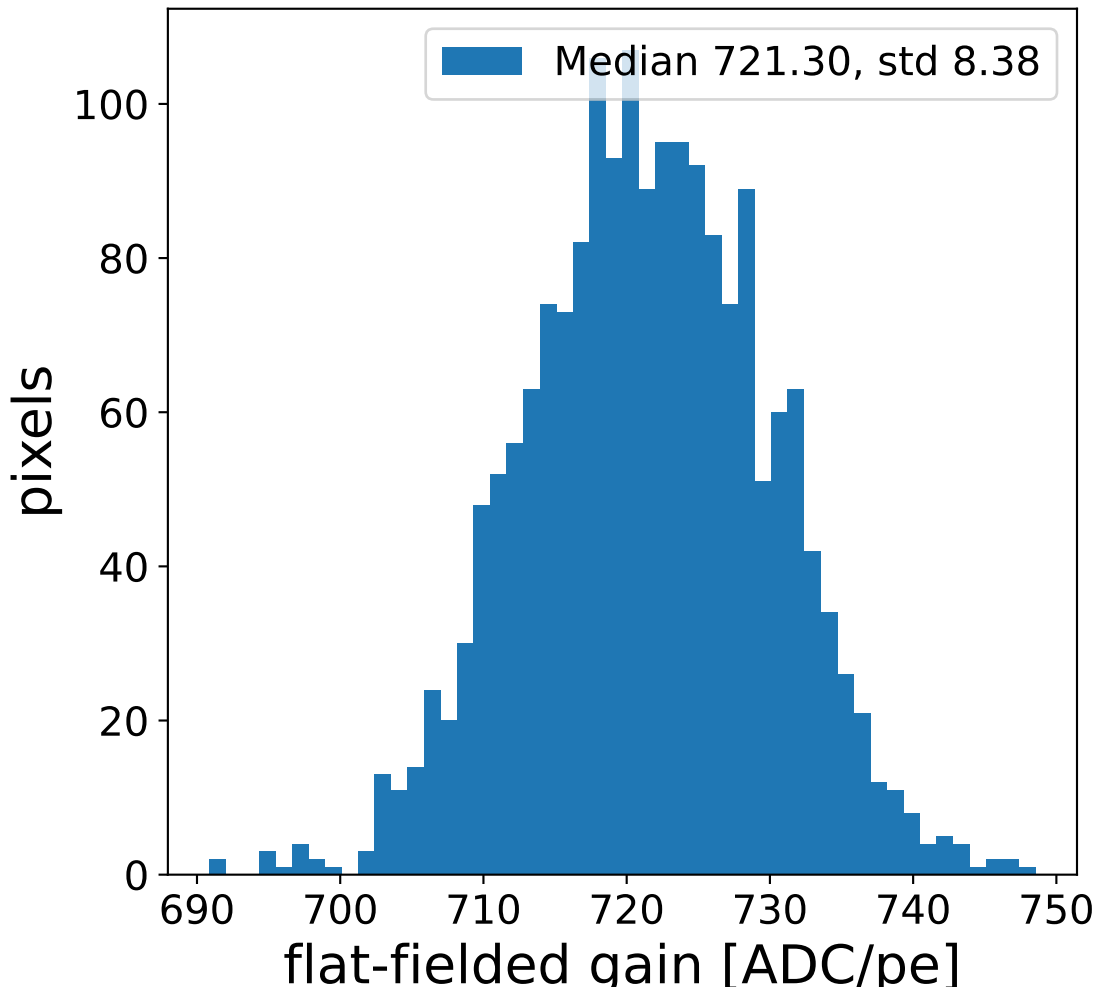
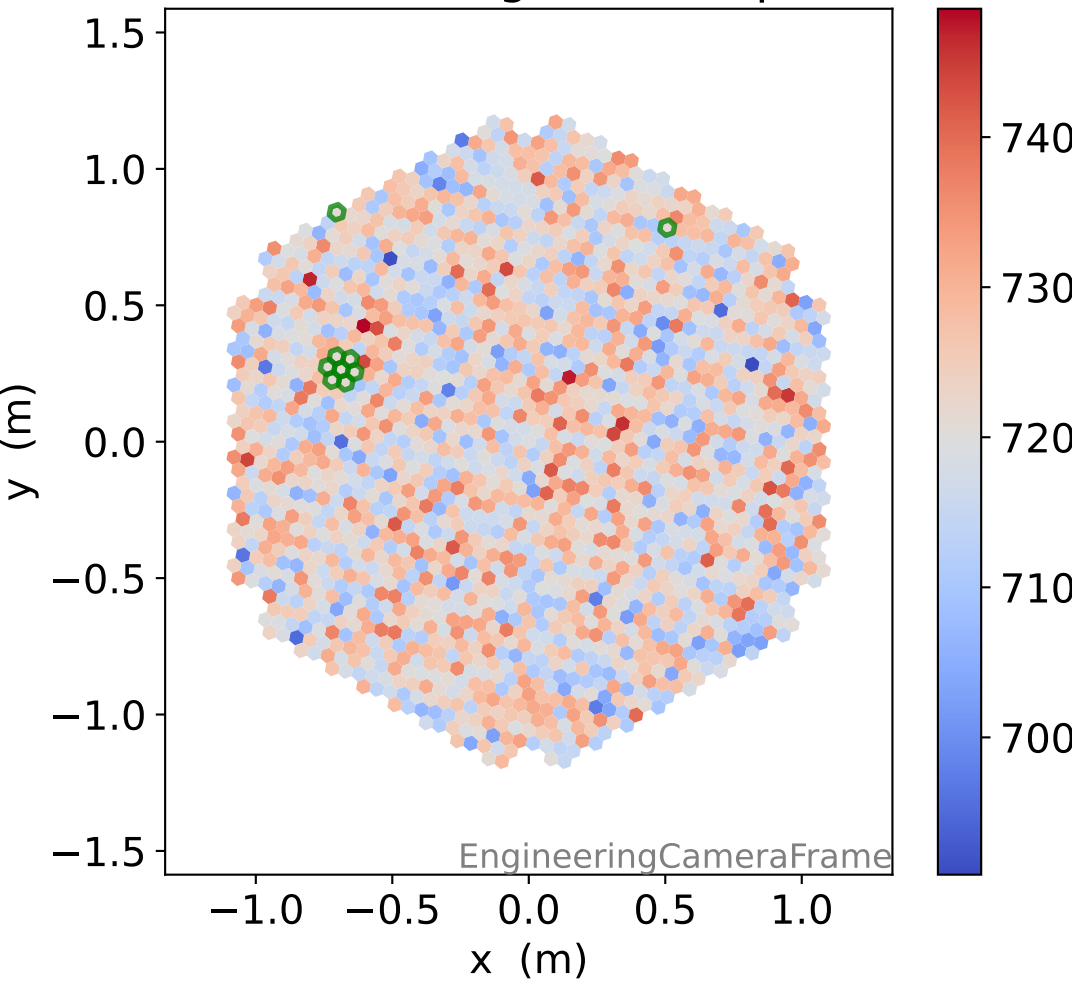
### FF sample of 10000 events



### pedestal sample of 10000 events

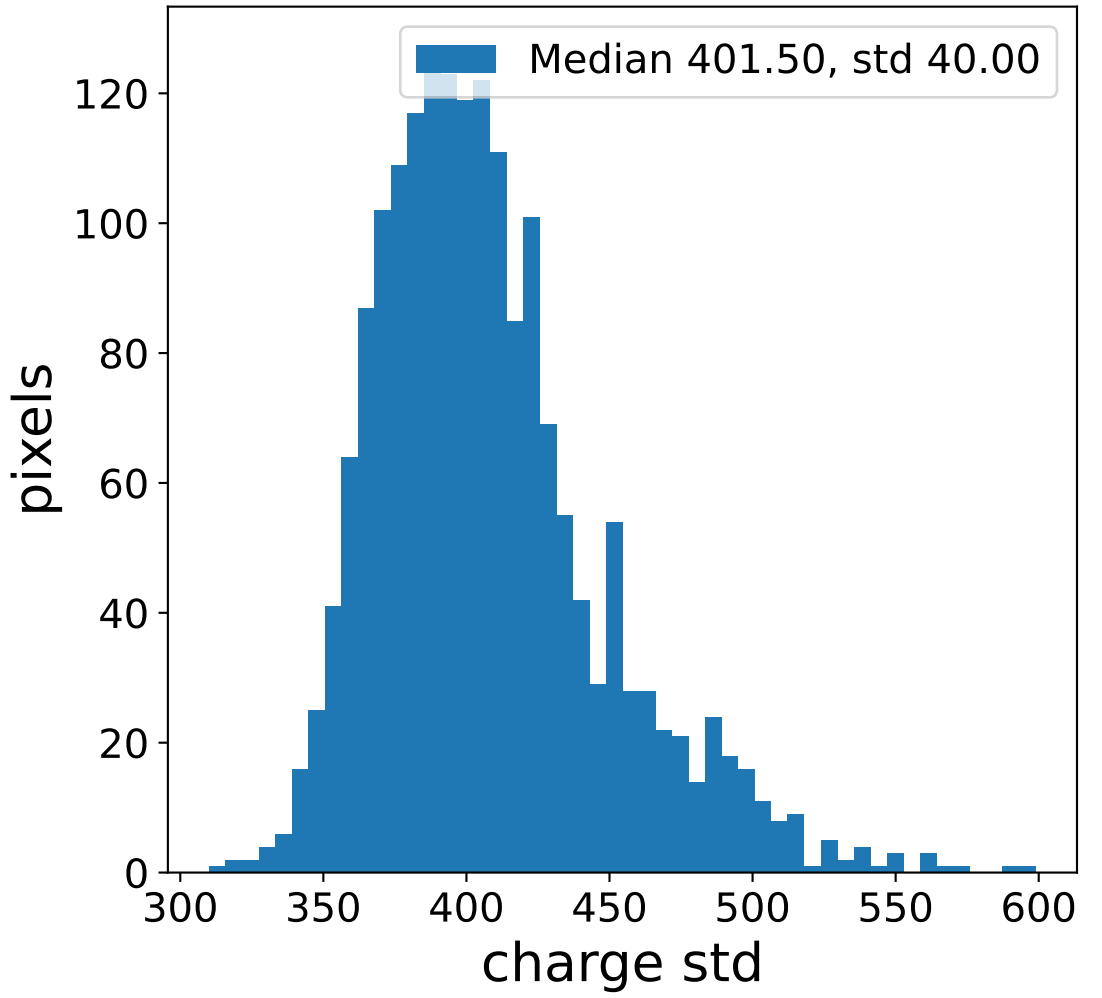
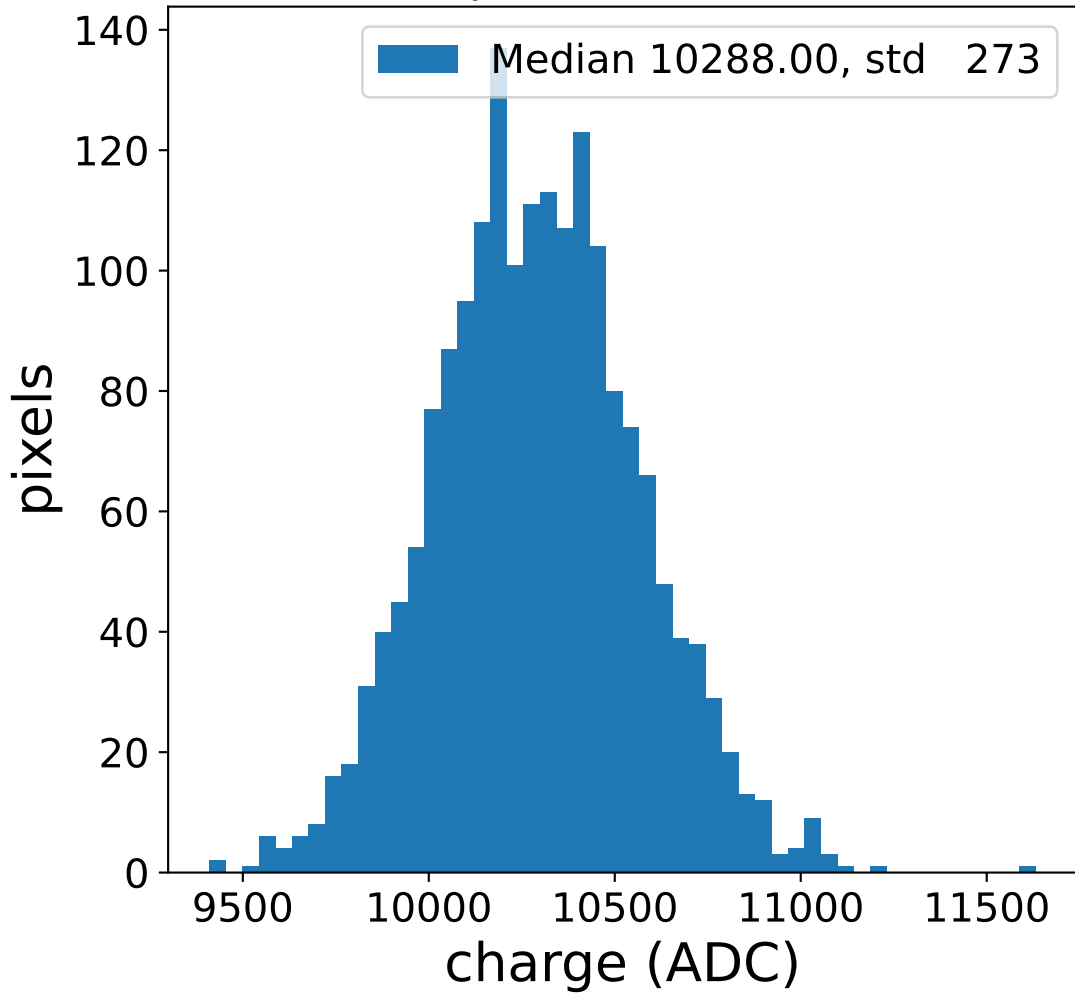


### flat-fielded gain [ADC/pe]

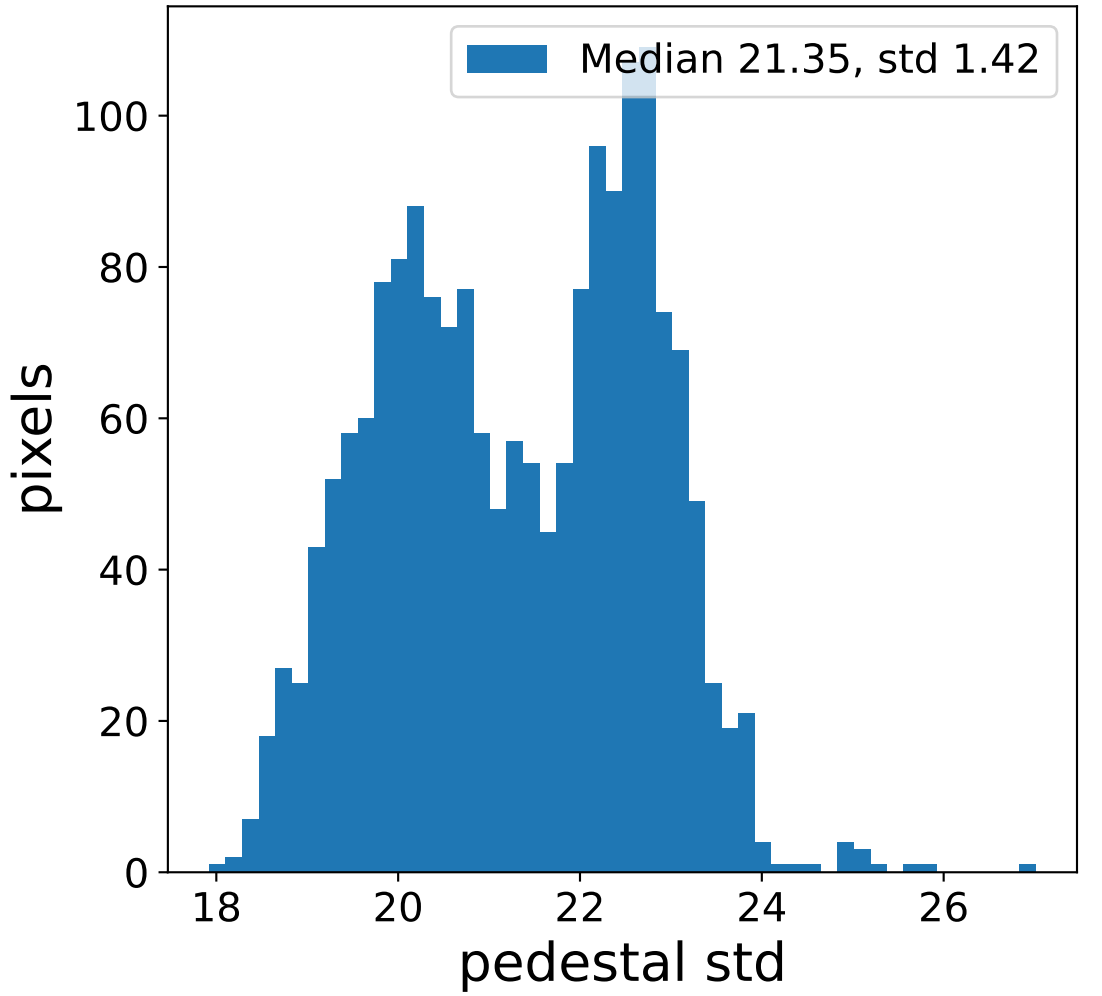
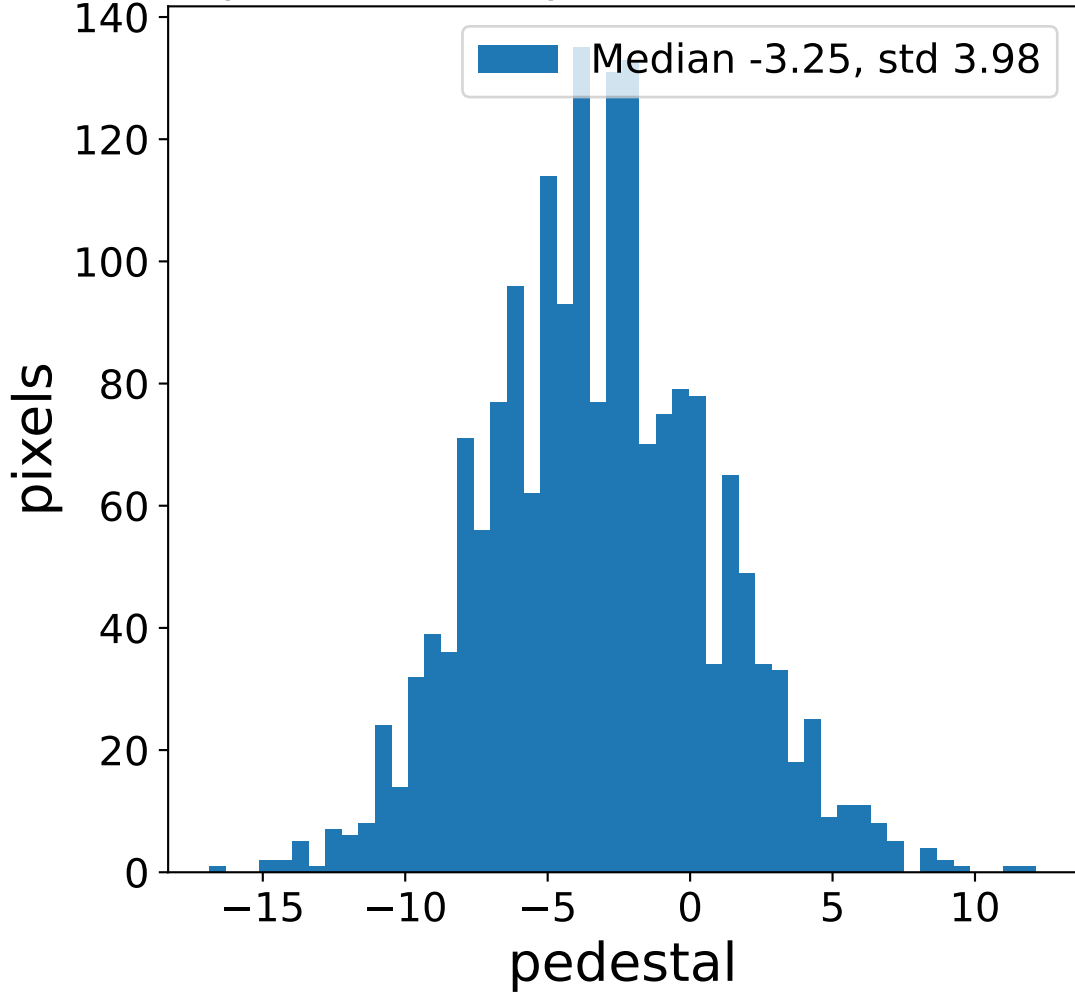


# Run 7541 channel: LG

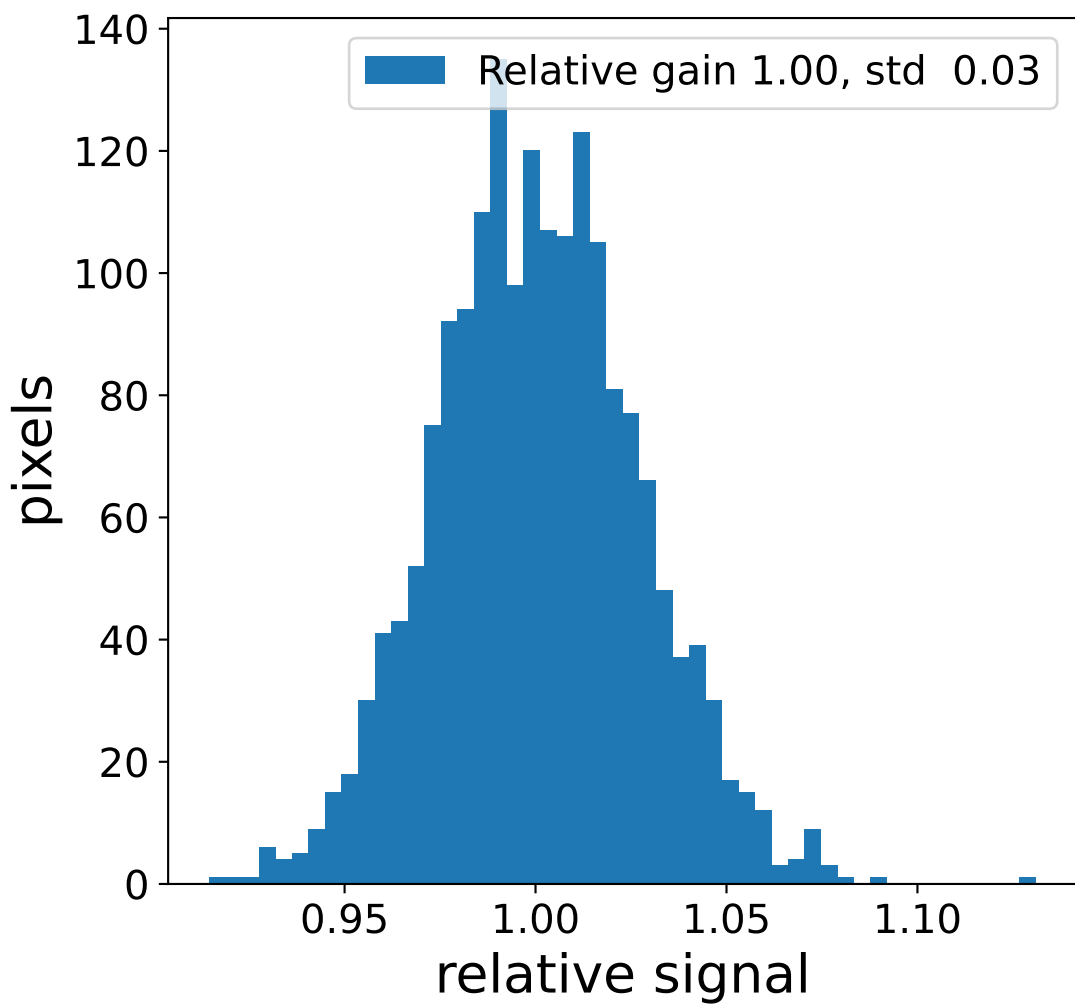
### FF sample of 10000 events



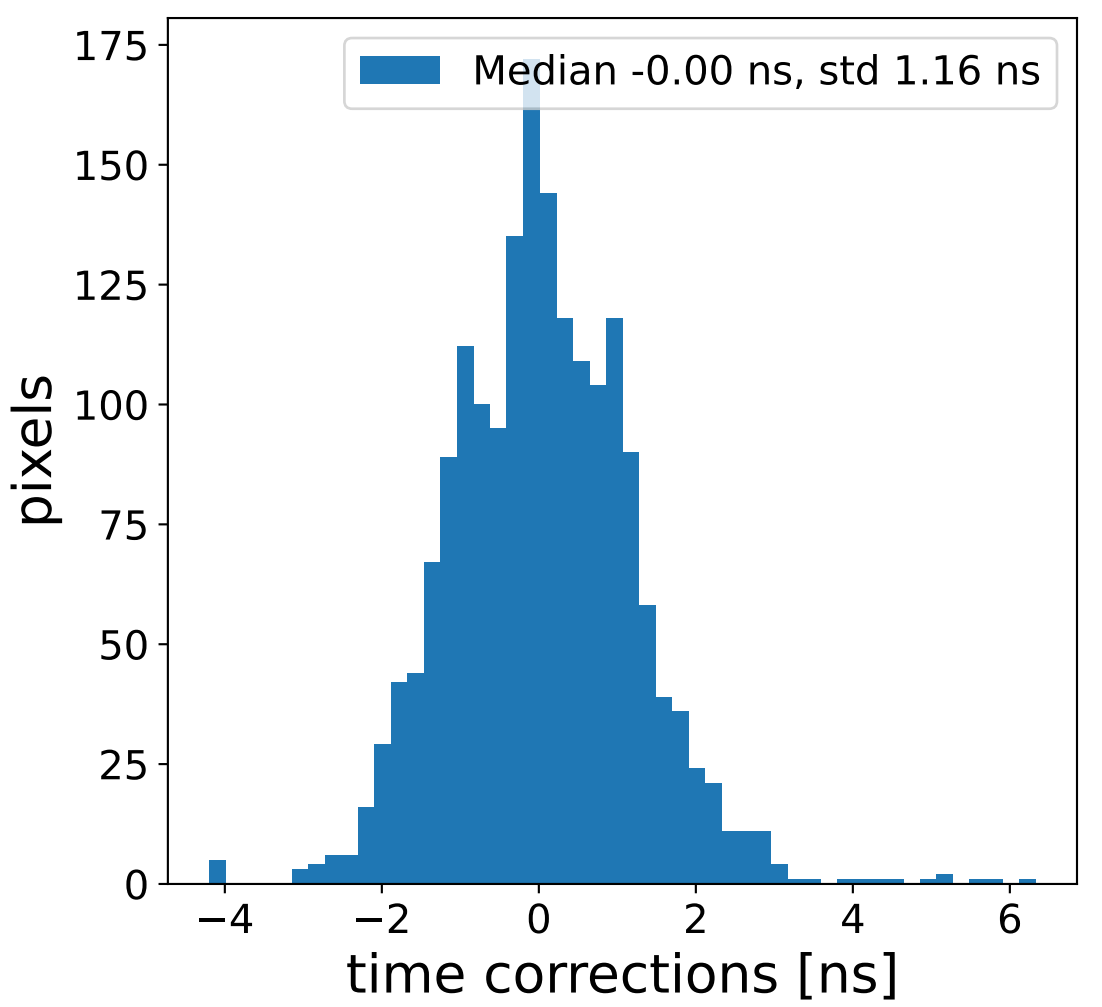
### pedestal sample of 10000 events



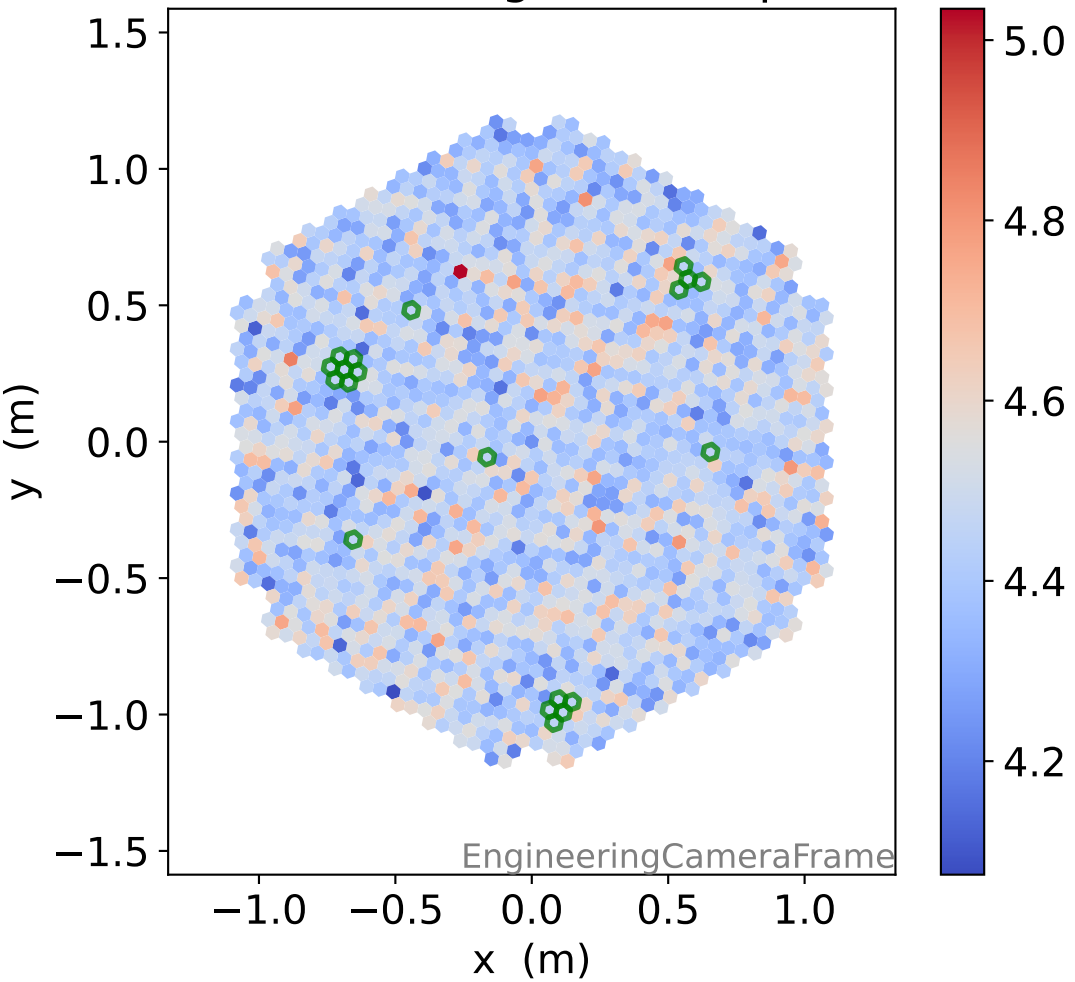
### Relative gain 1.00, std 0.03



### Median -0.00 ns, std 1.16 ns



### flat-fielded gain [ADC/pe]



### Median 4.45, std 0.12

