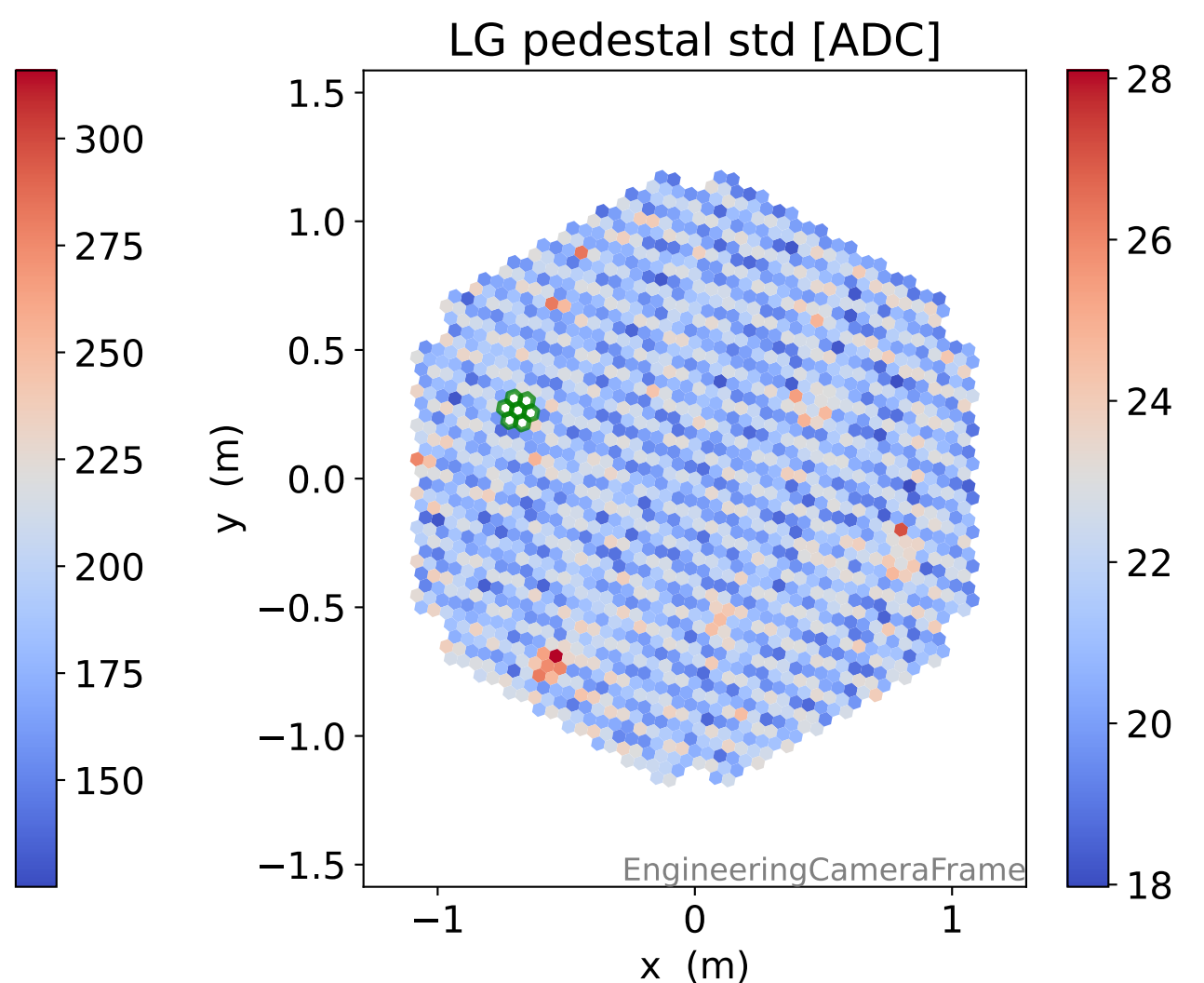
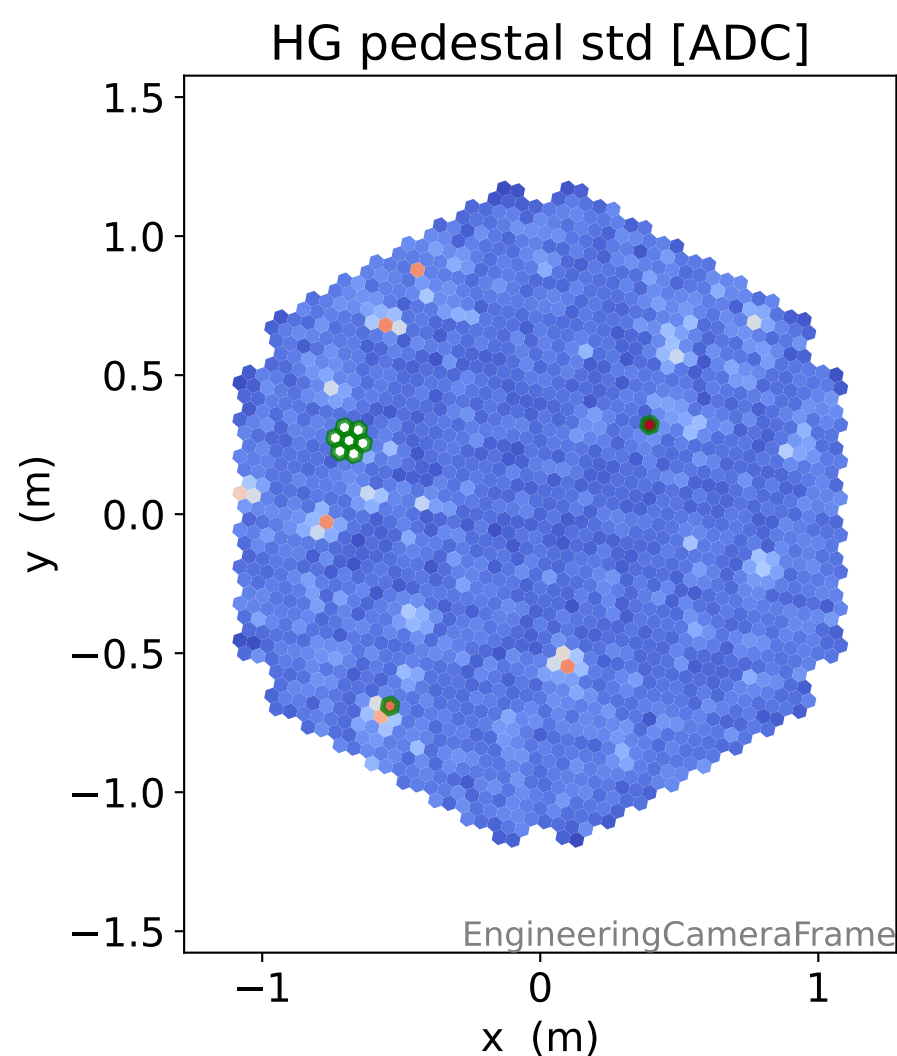
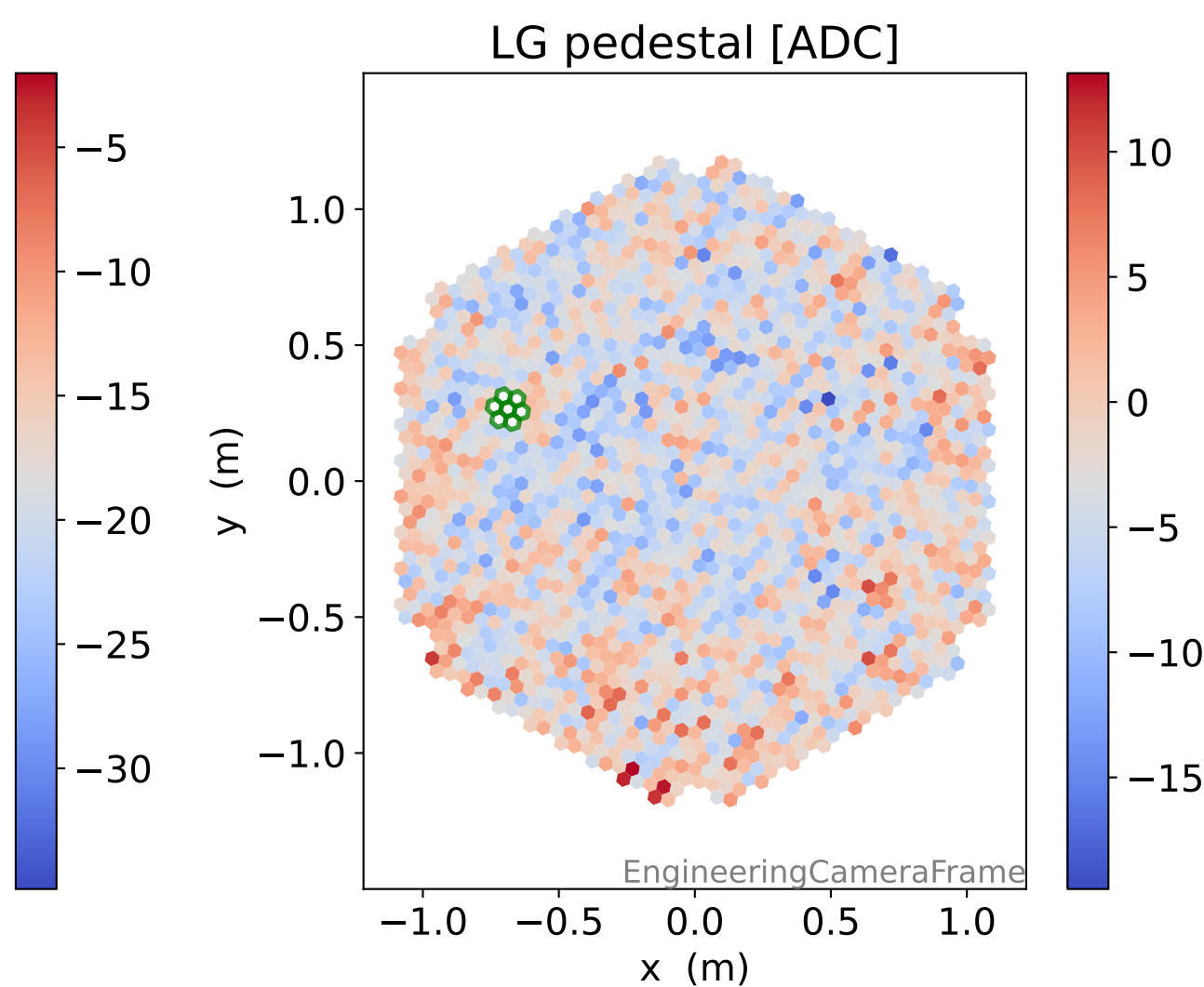
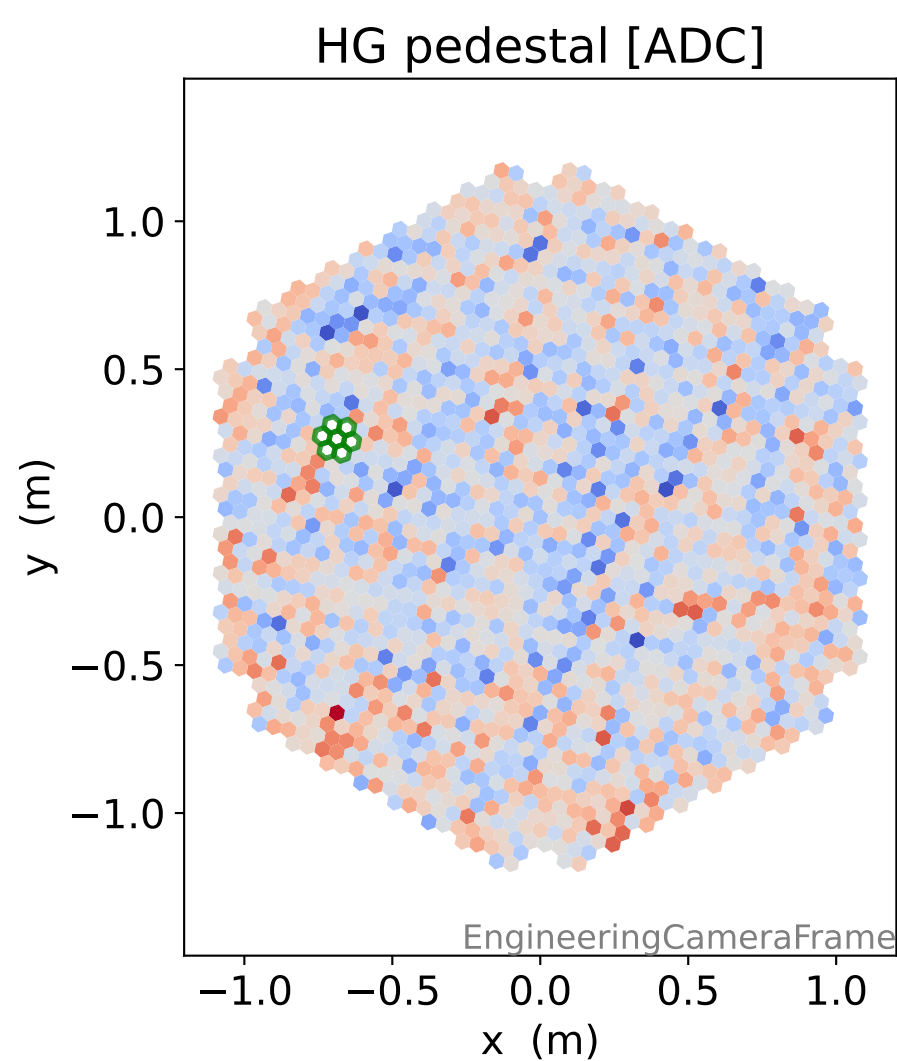
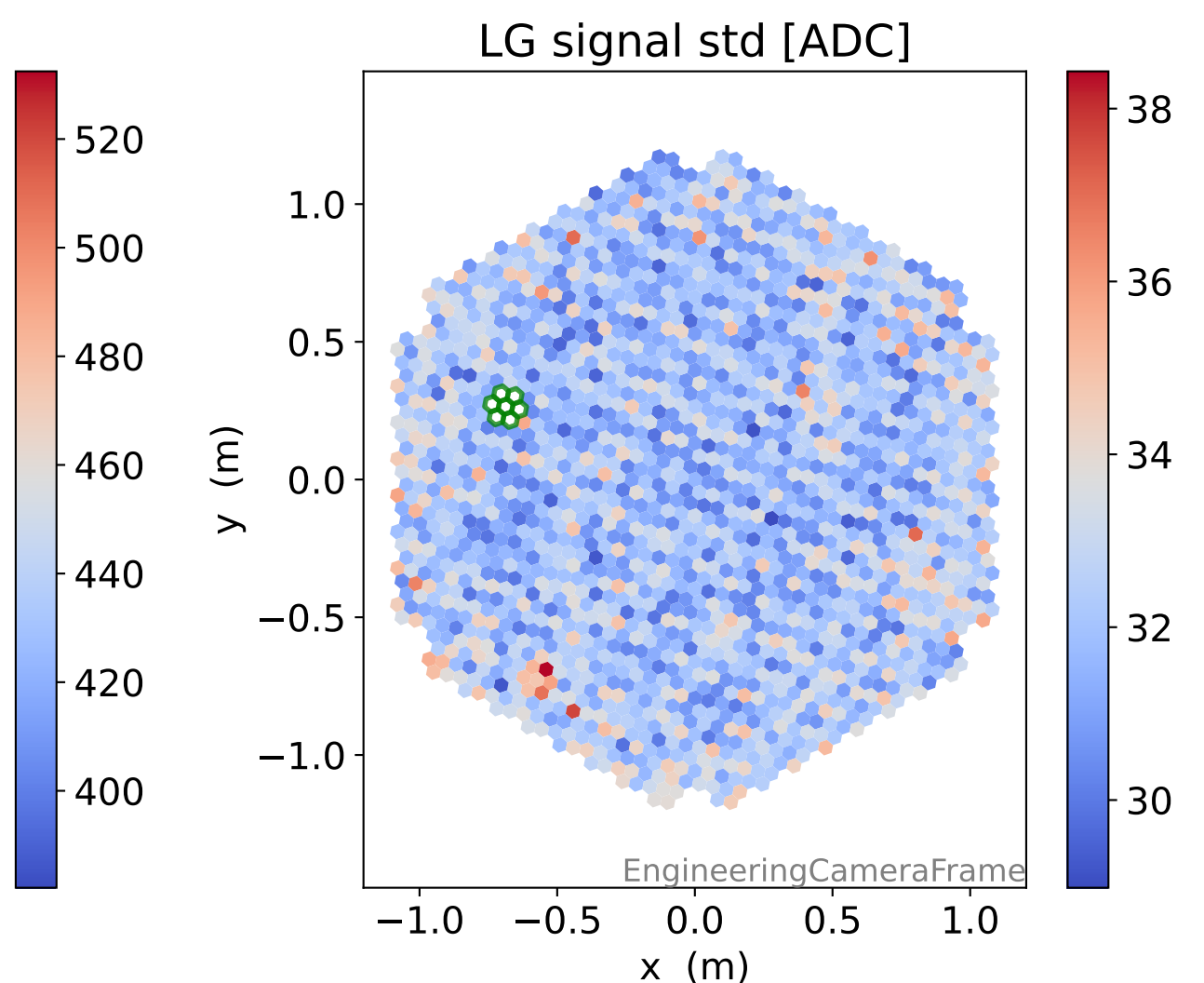
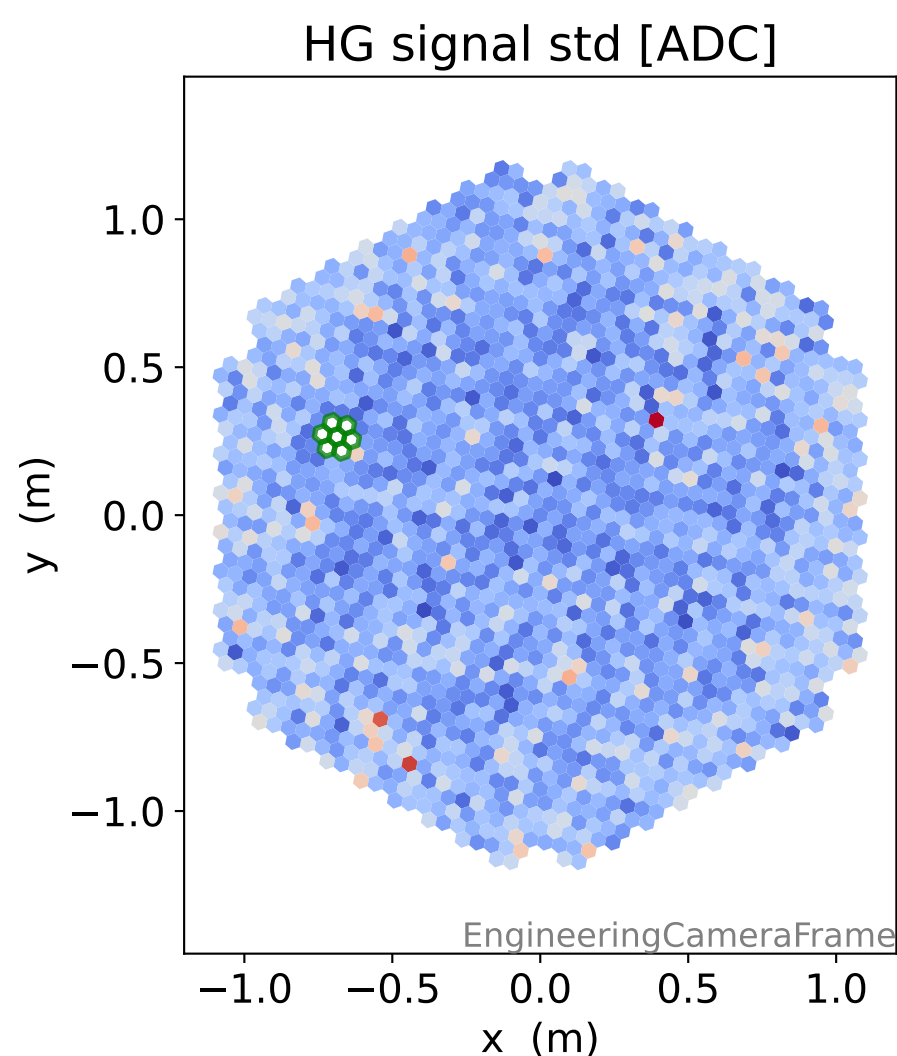
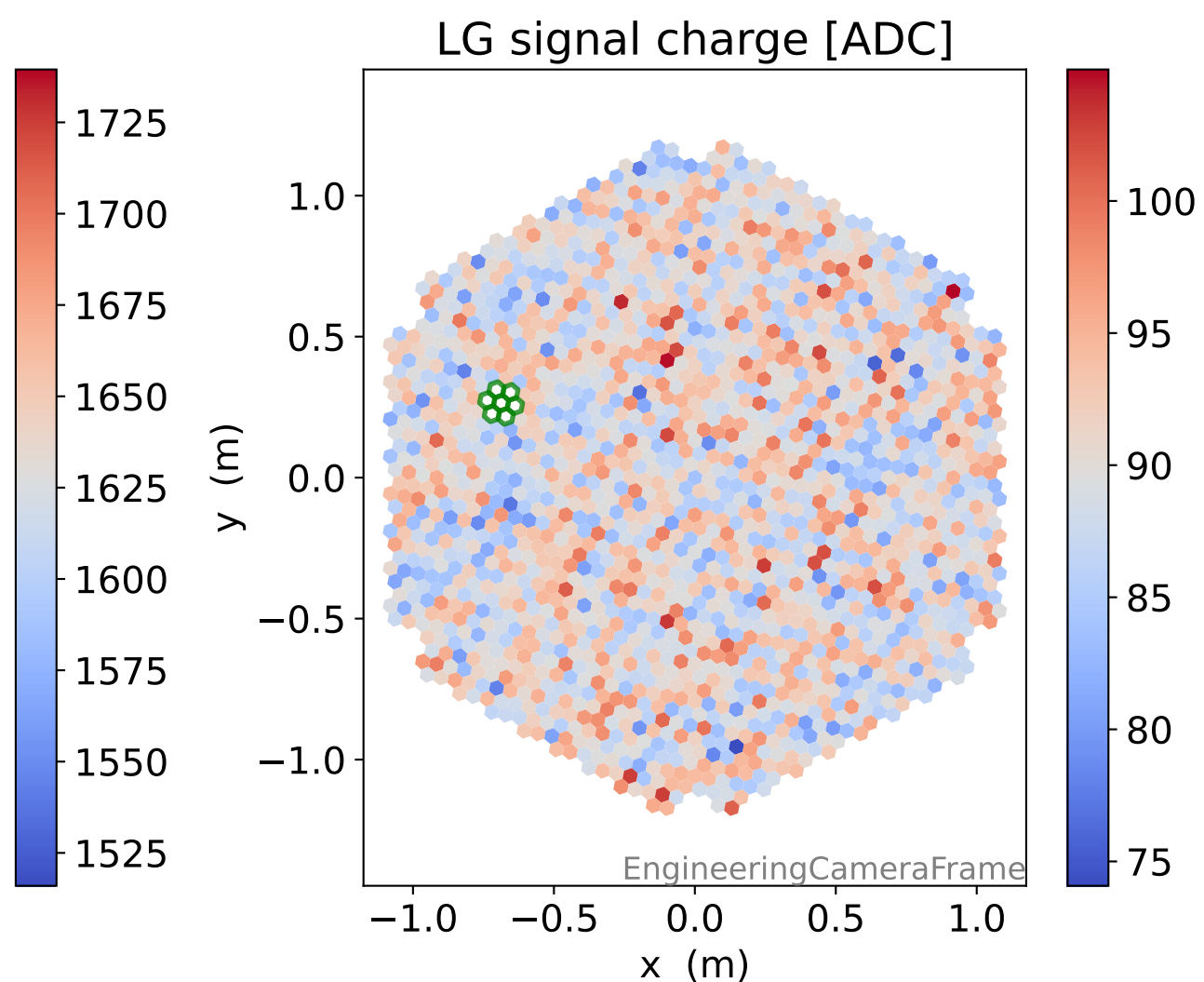
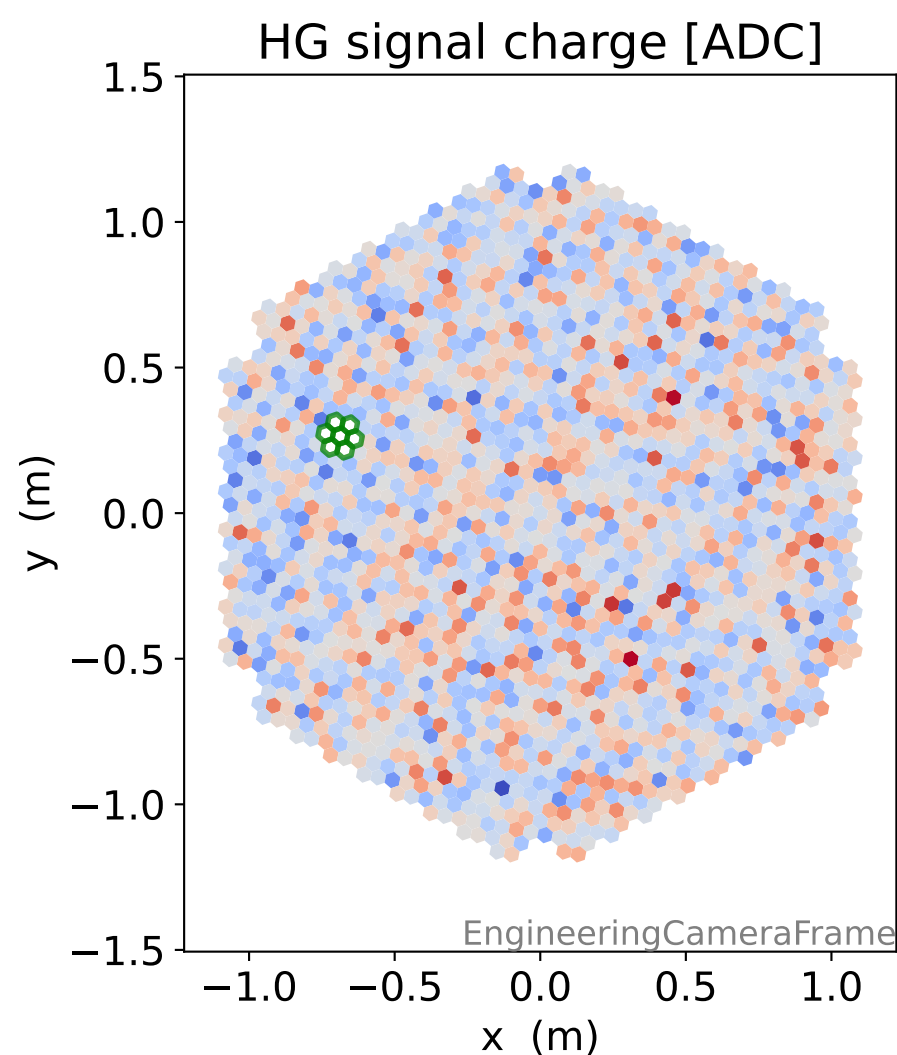
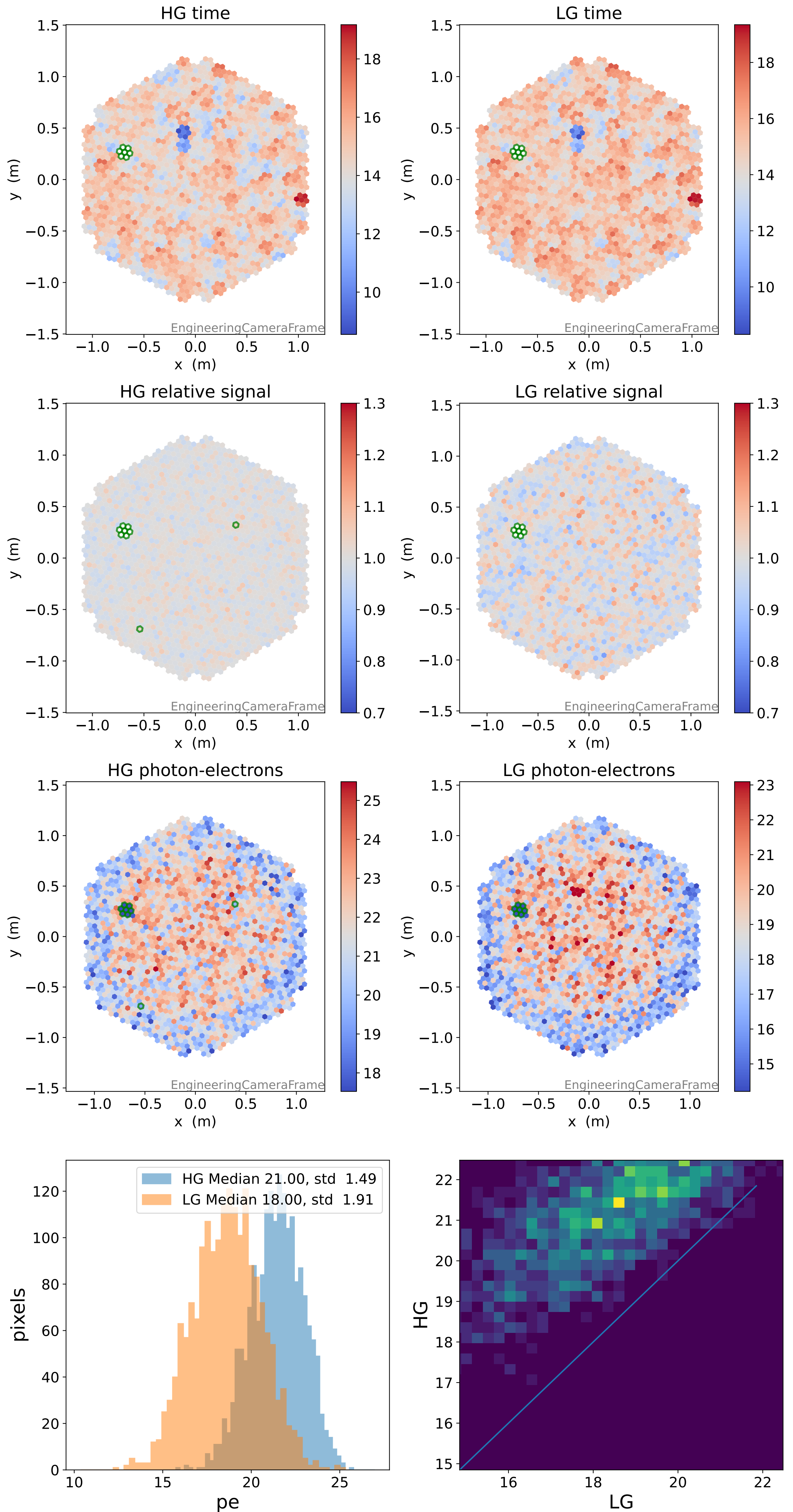


# Run 7511

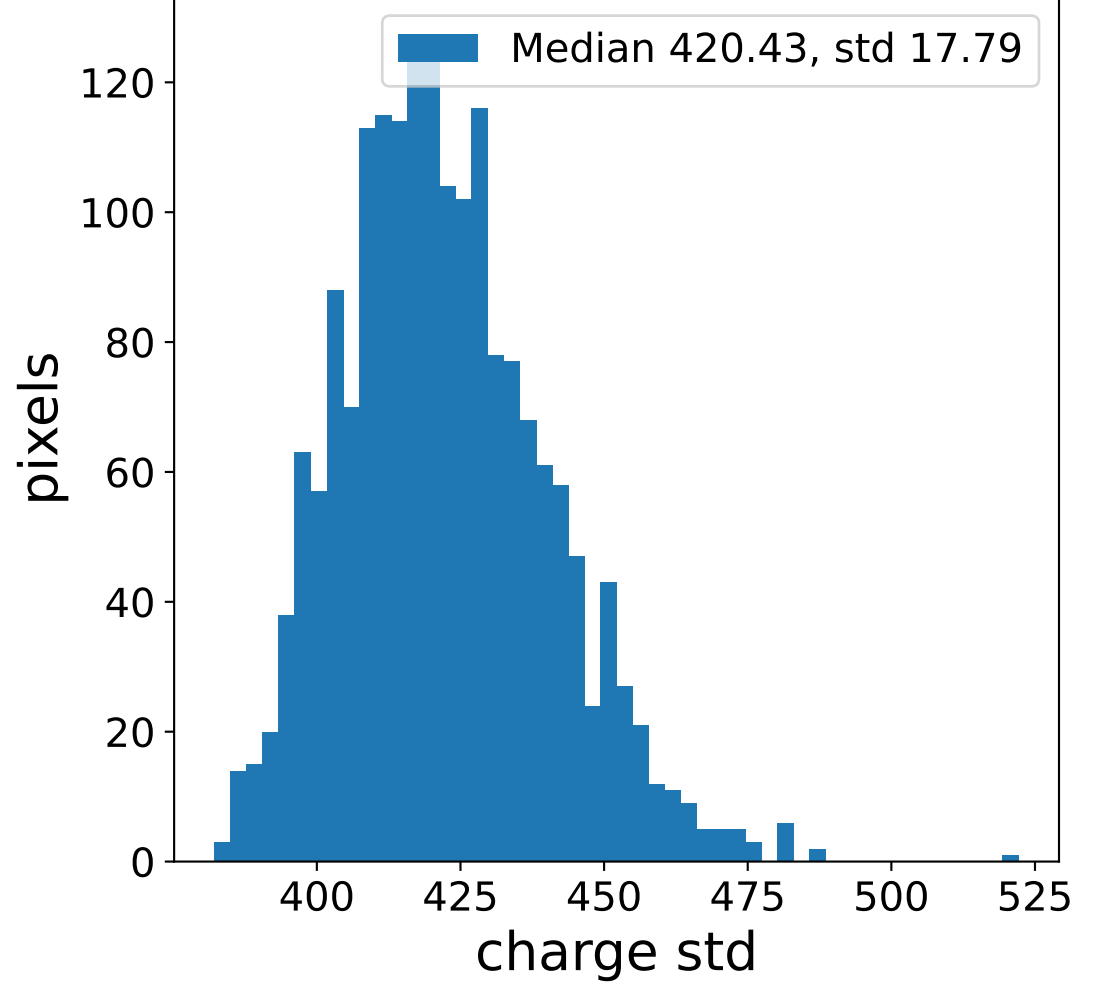
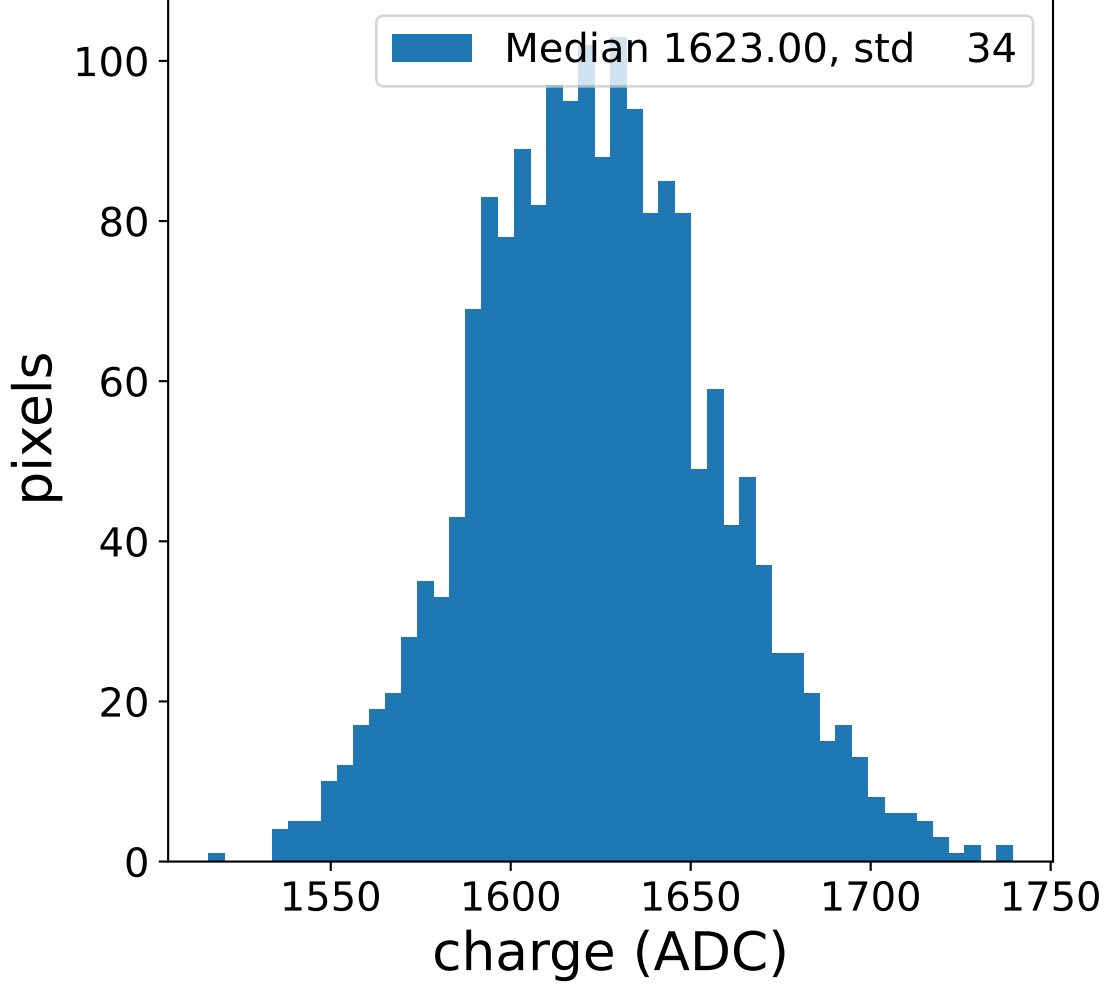


# Run 7511

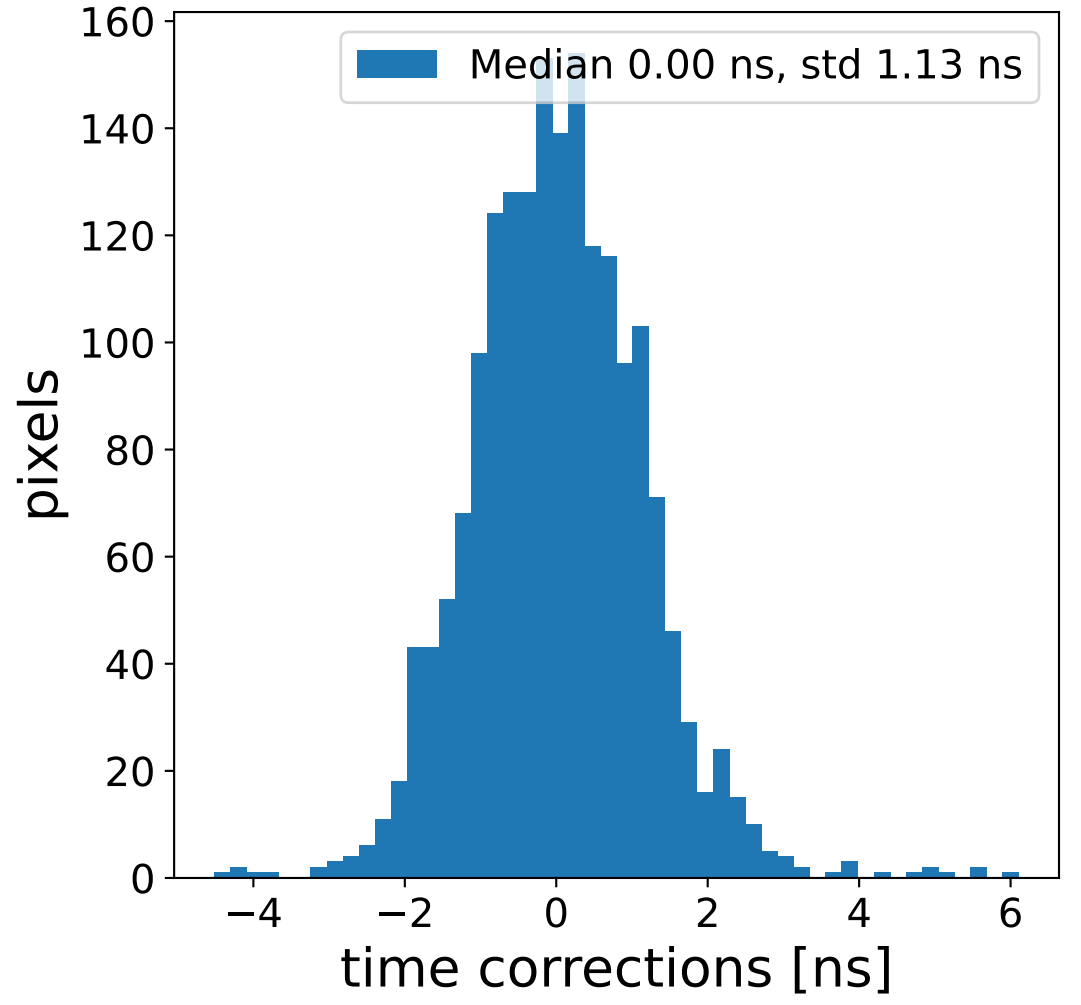
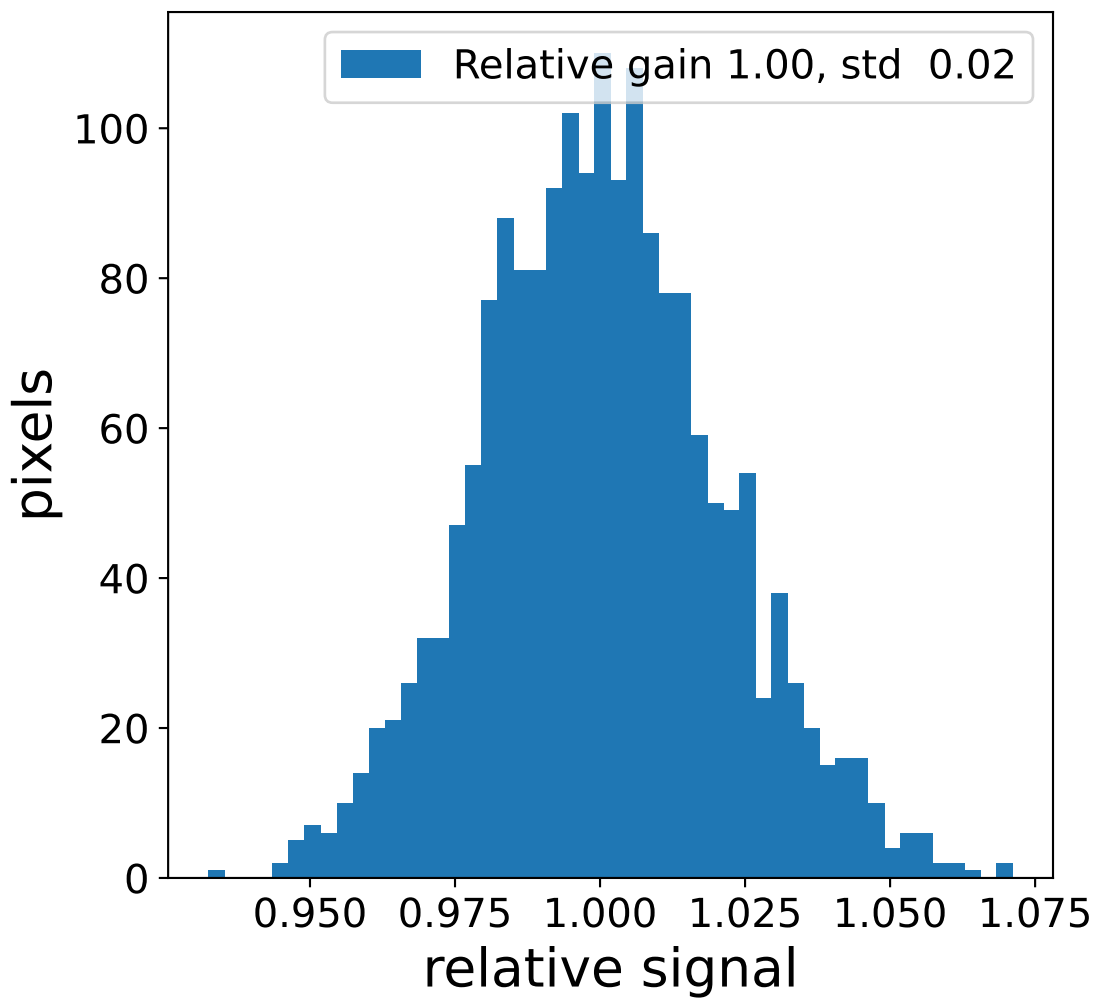
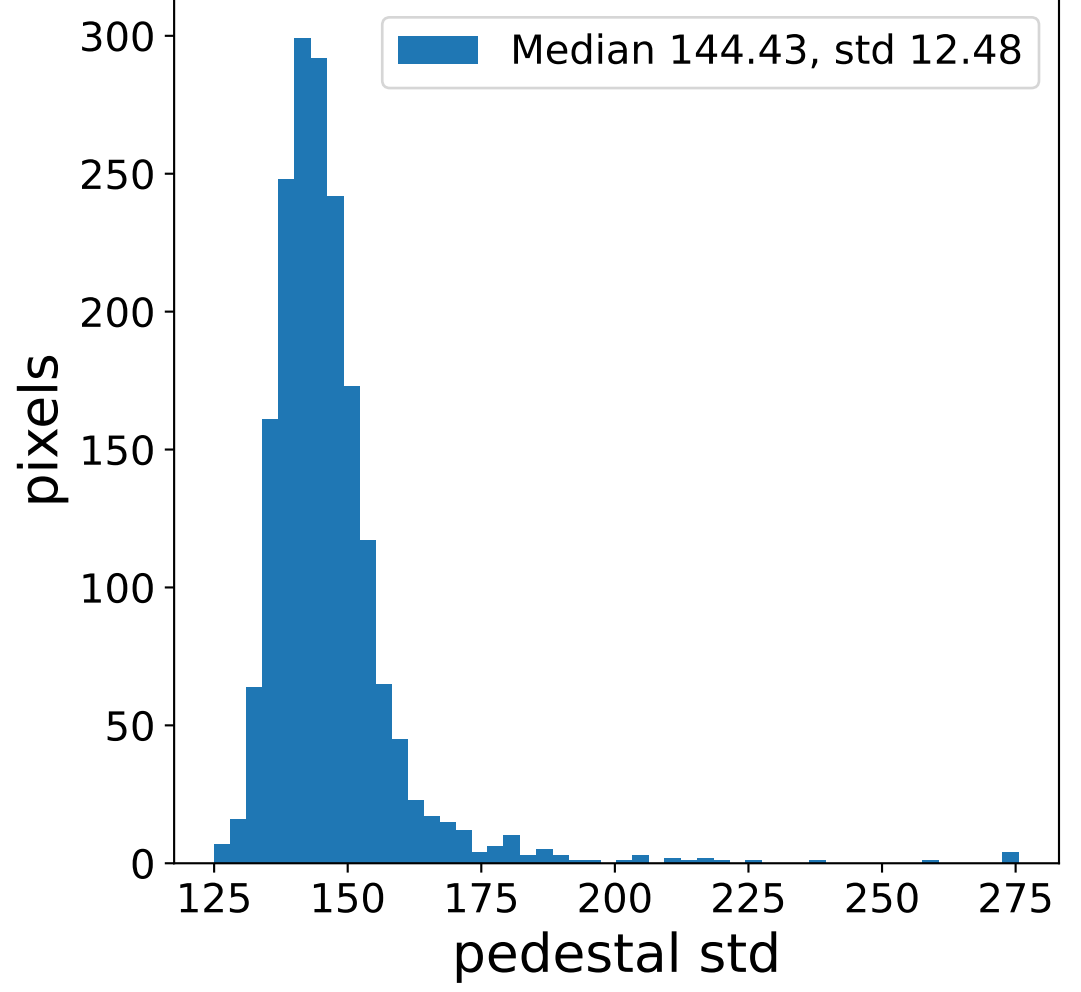
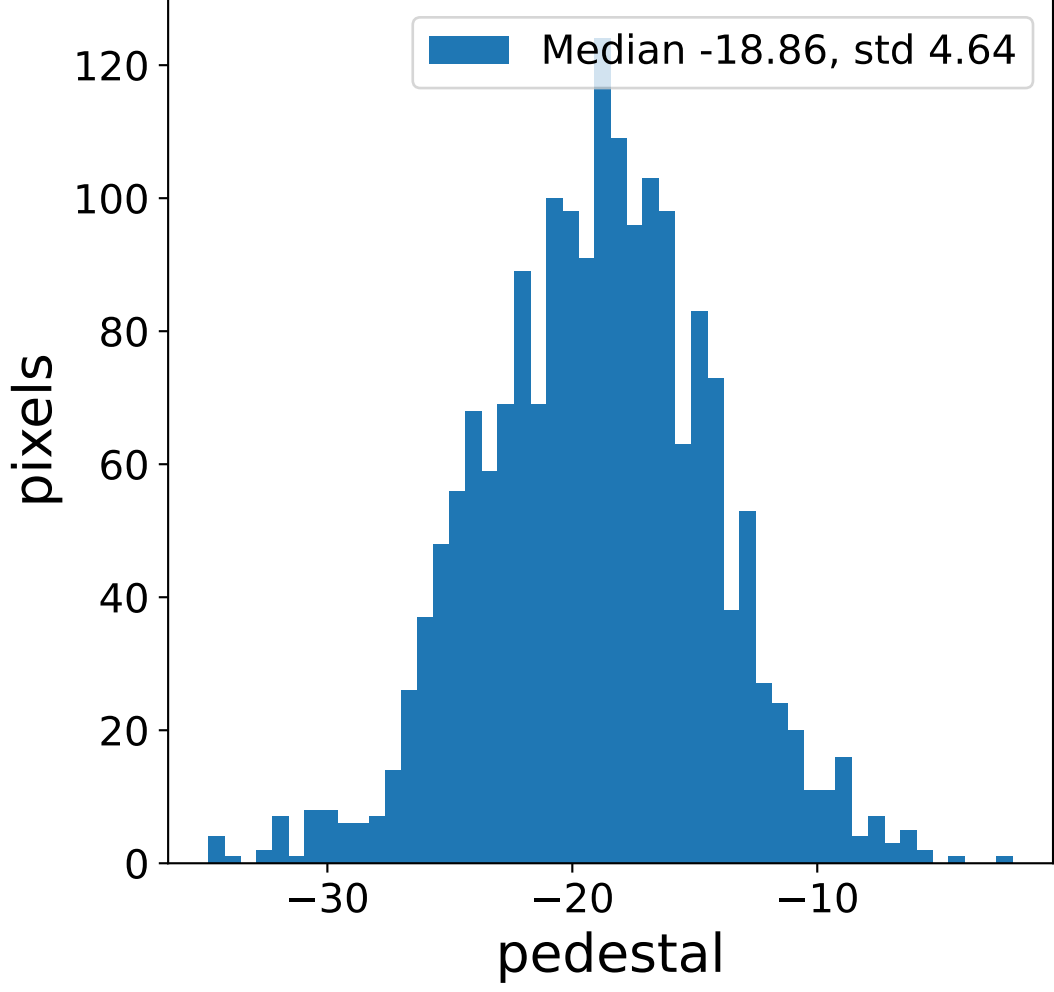


# Run 7511 channel: HG

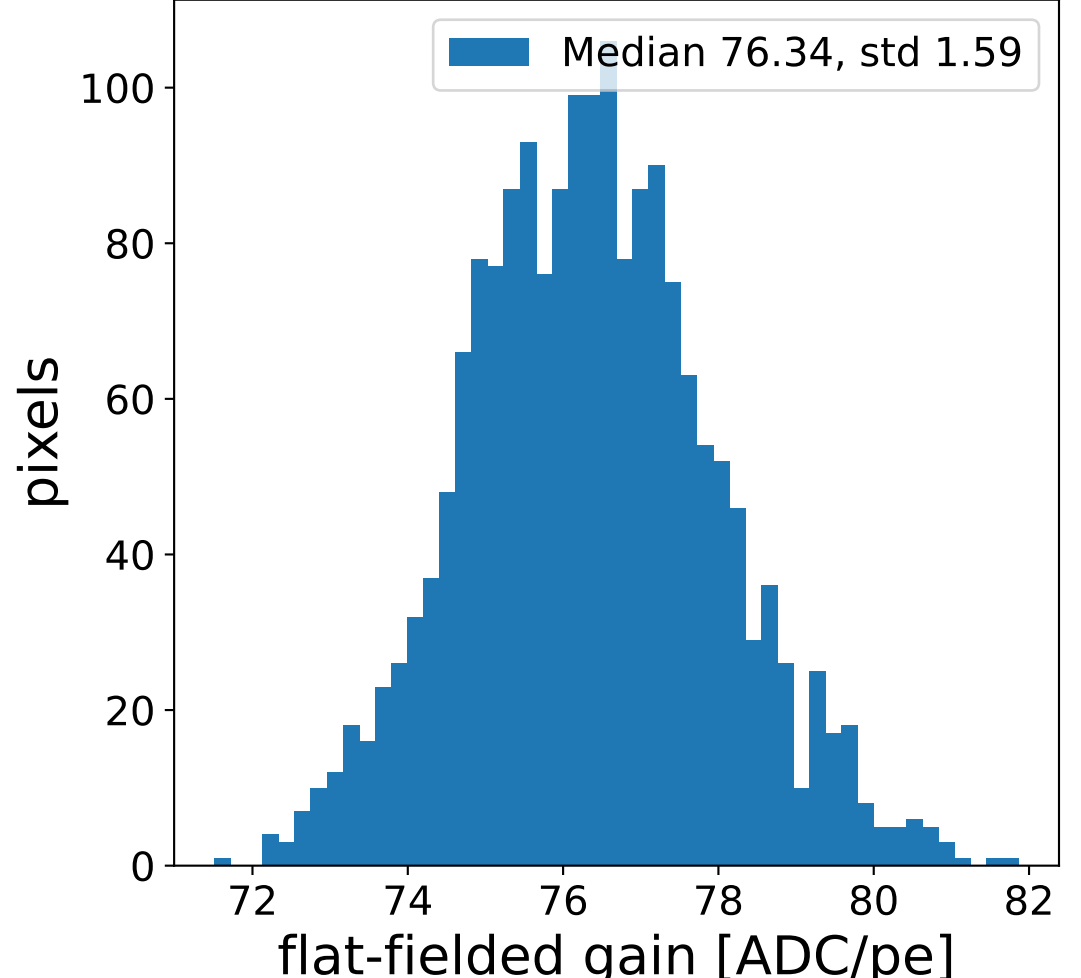
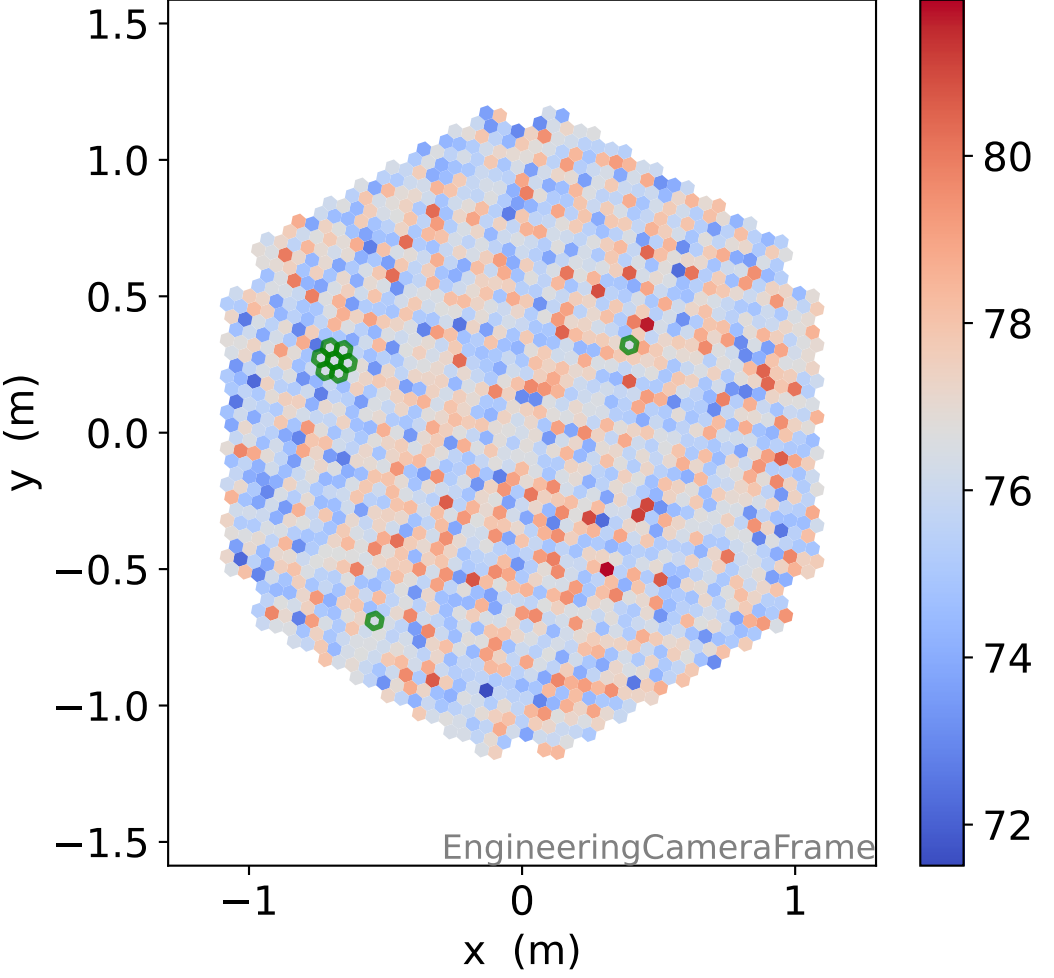
### FF sample of 10000 events



### pedestal sample of 10000 events

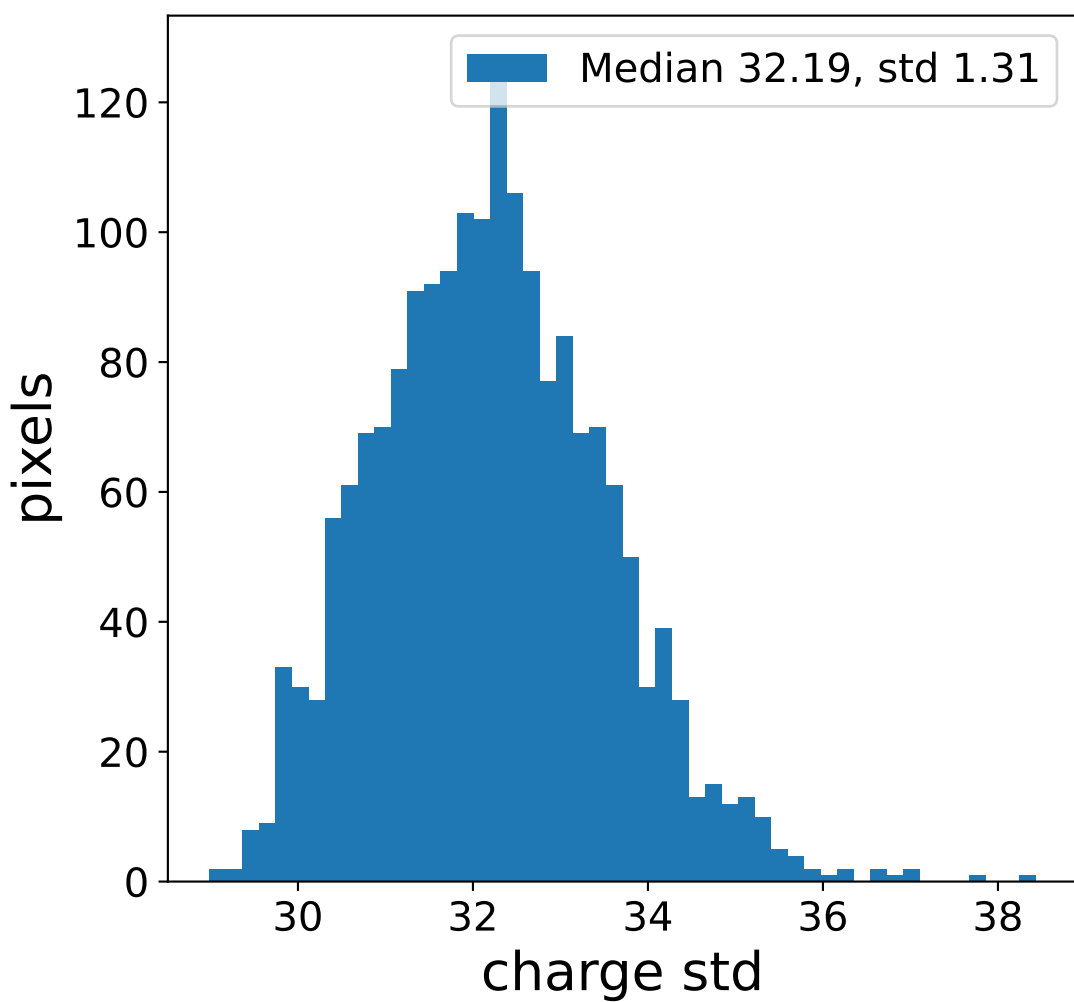
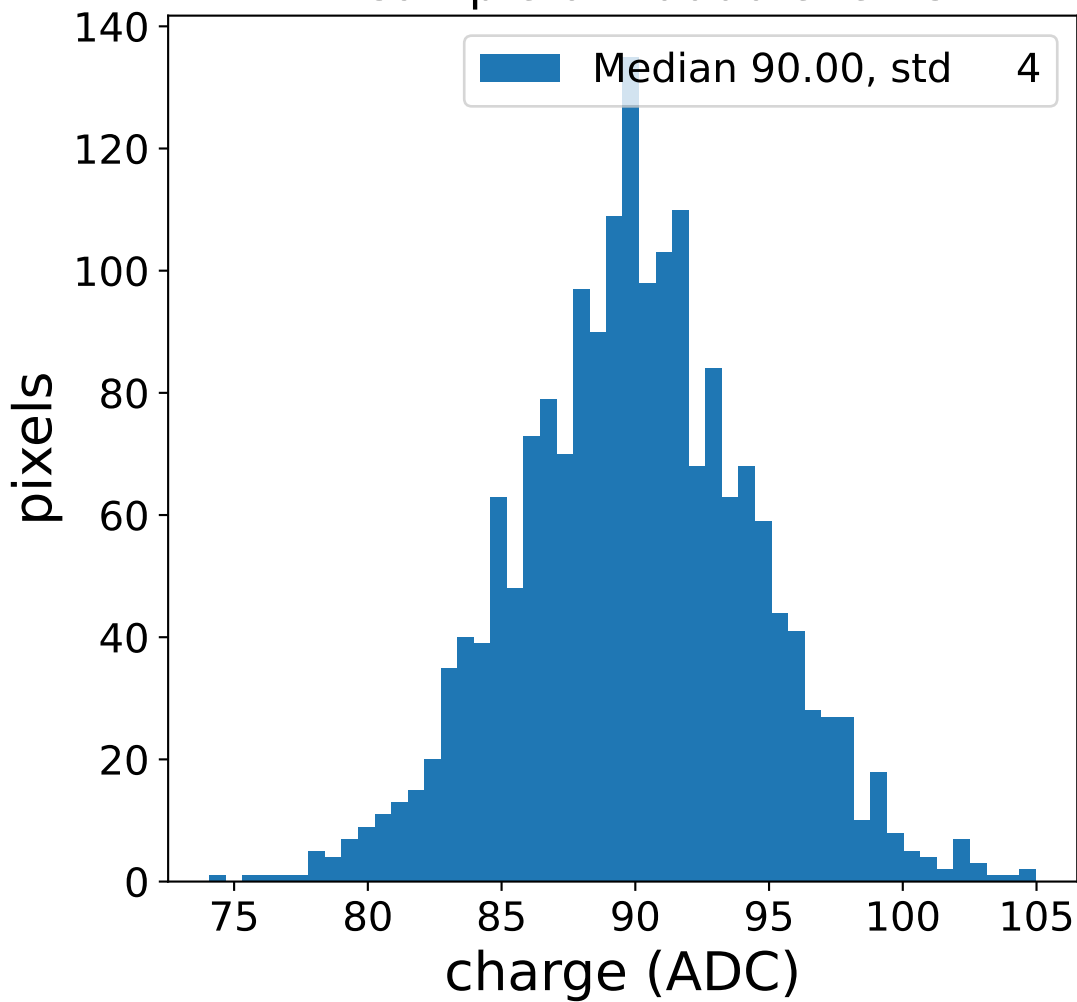


### flat-fielded gain [ADC/pe]

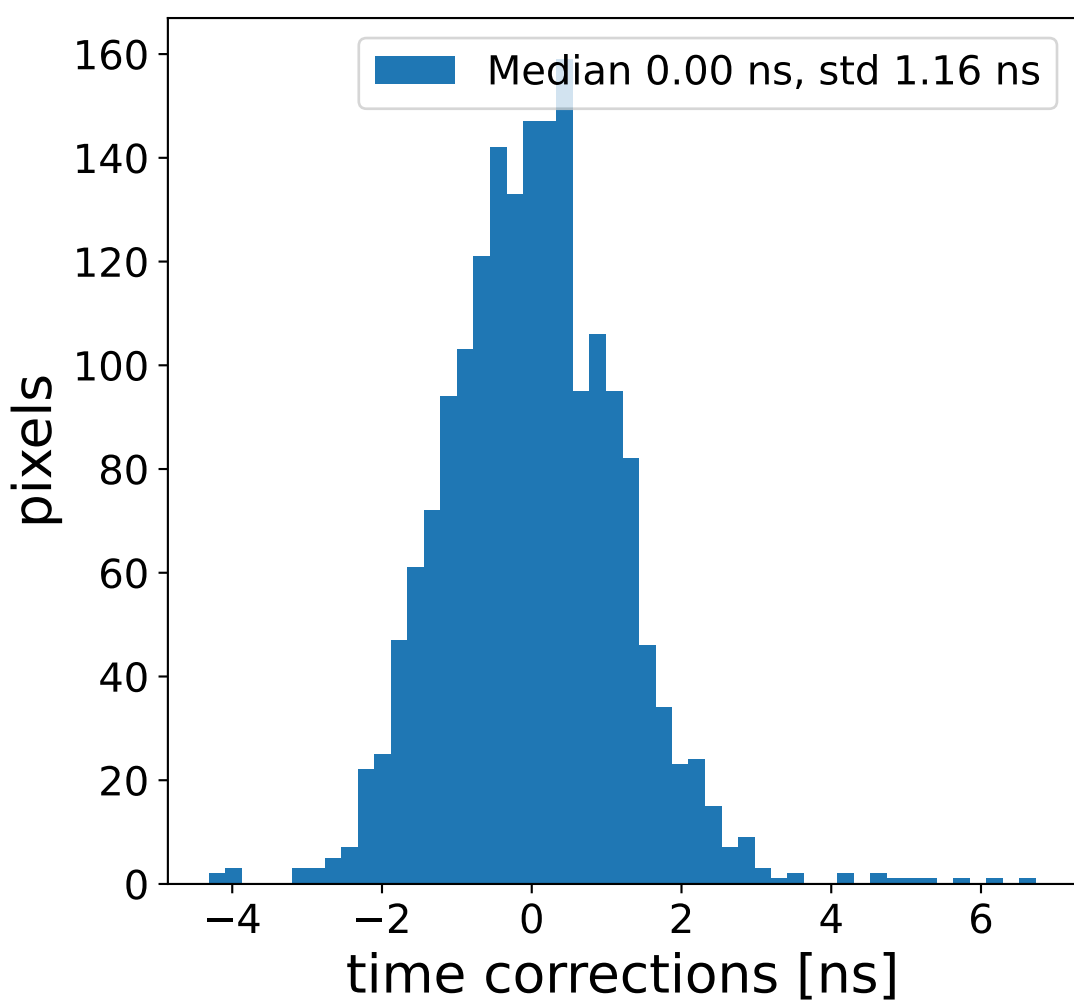
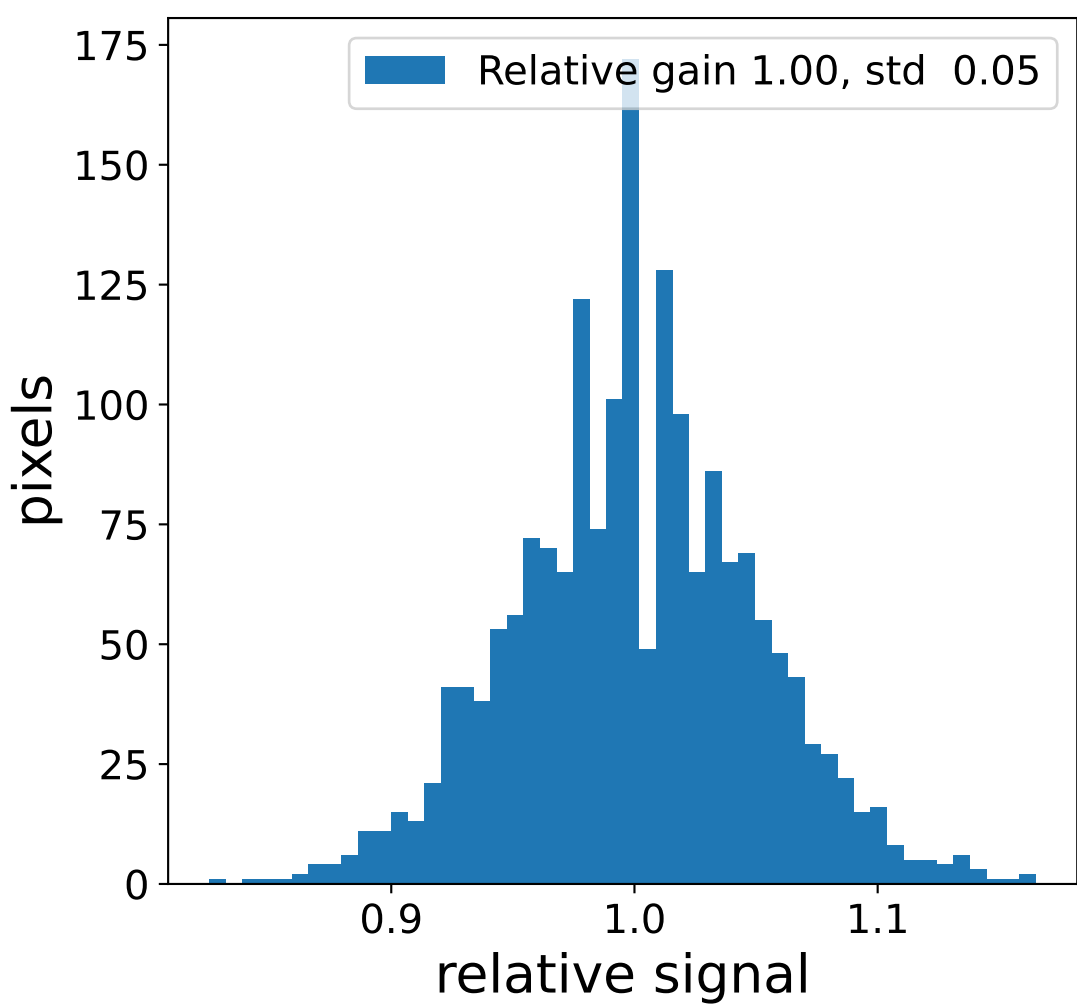
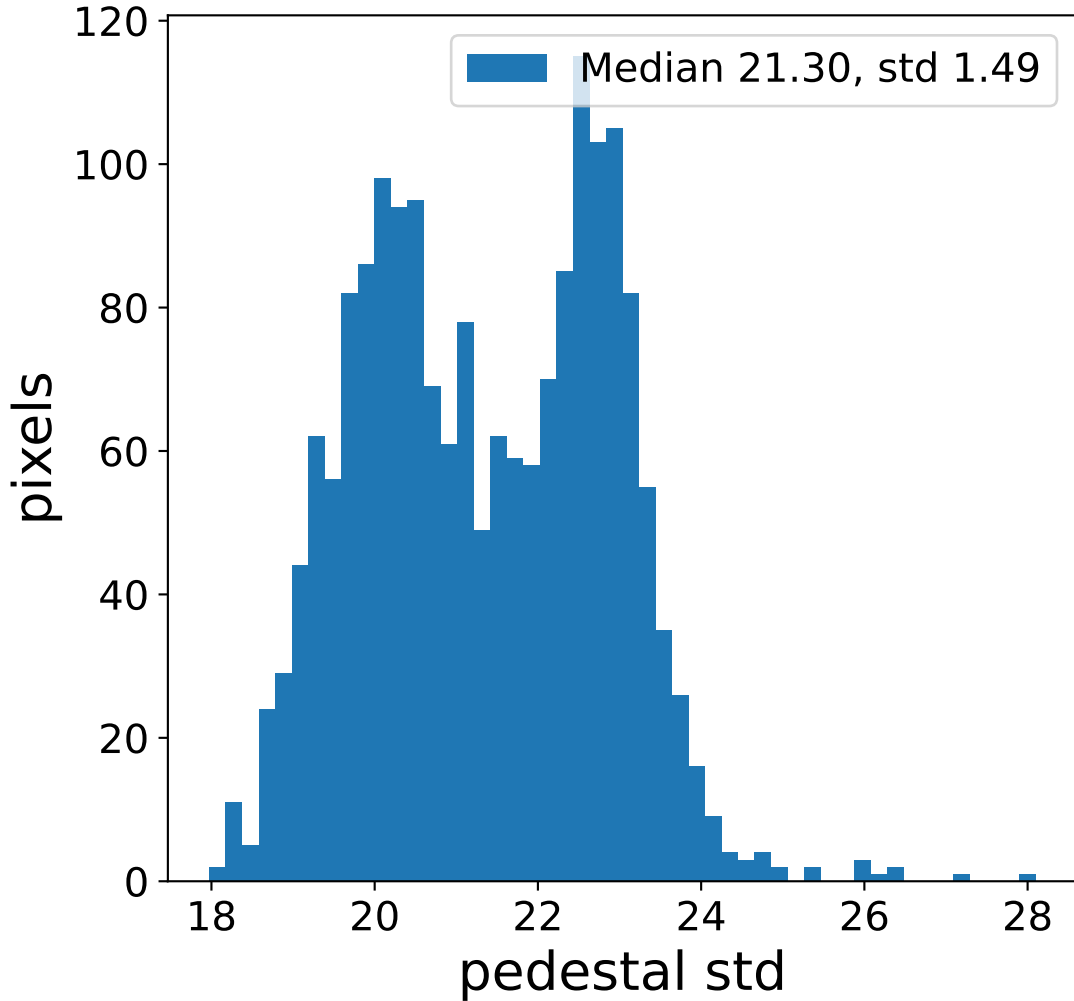
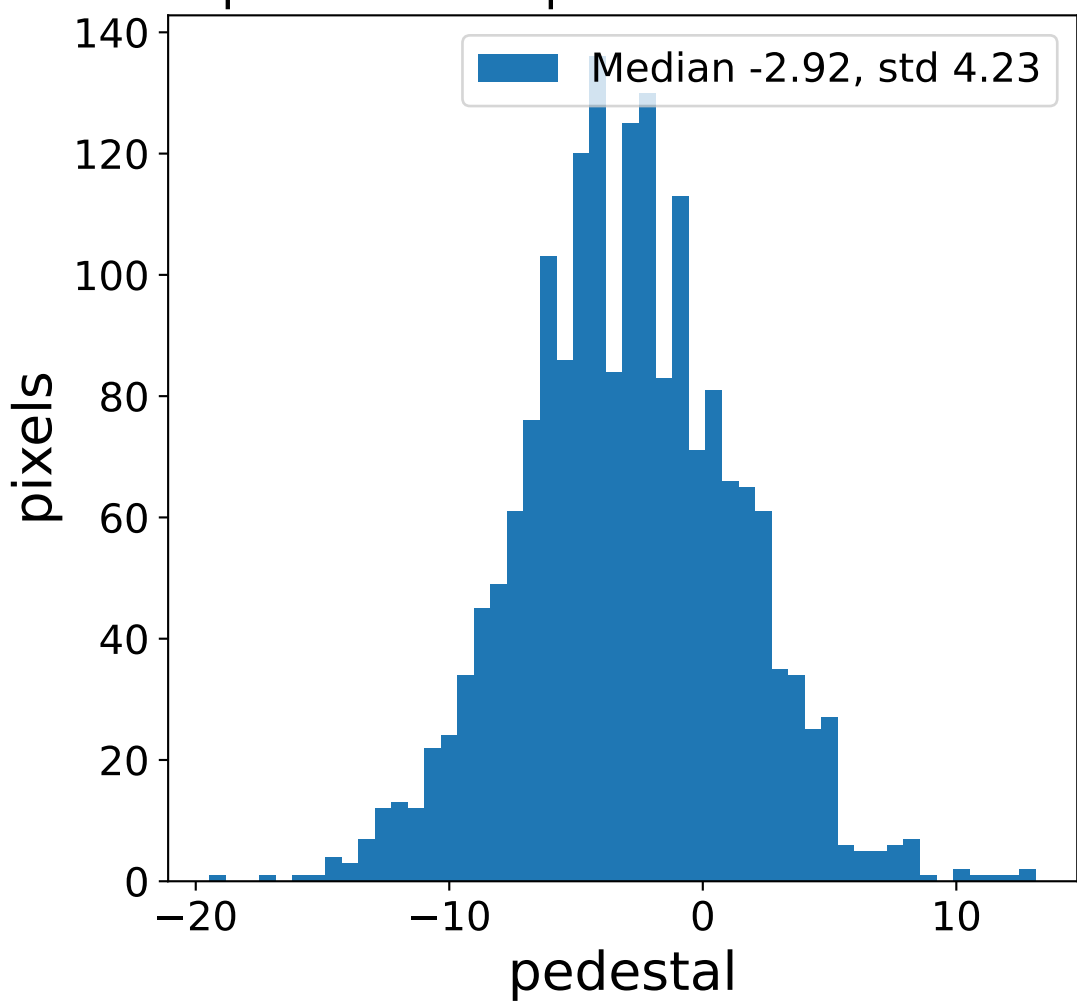


# Run 7511 channel: LG

## FF sample of 10000 events



## pedestal sample of 10000 events



## flat-fielded gain [ADC/pe]

