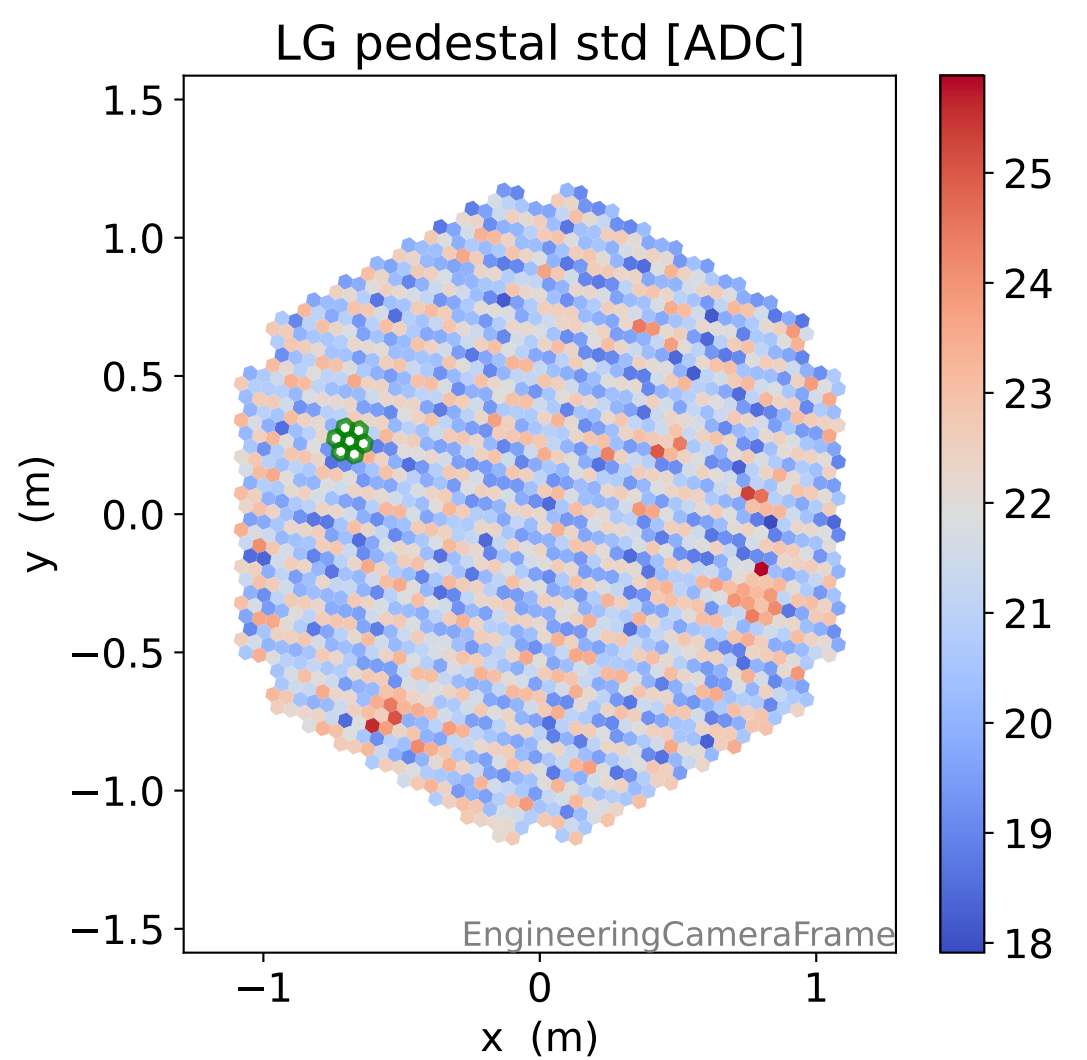
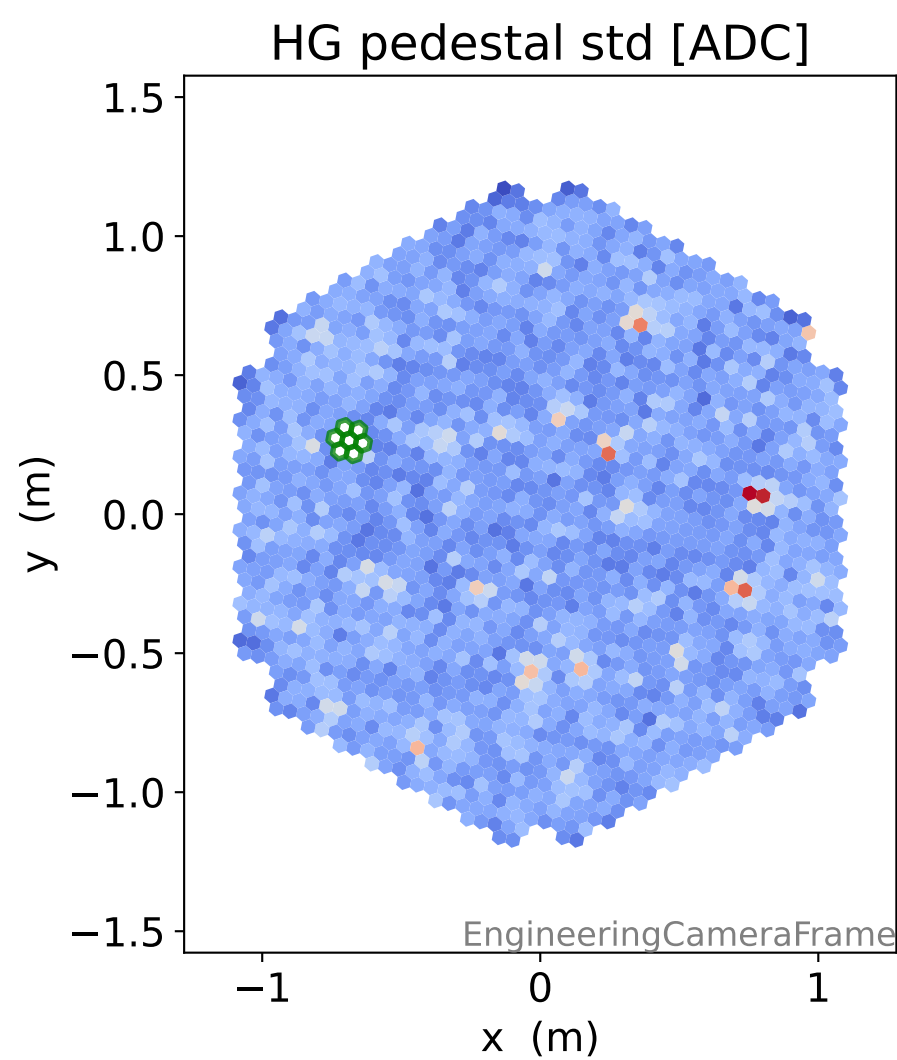
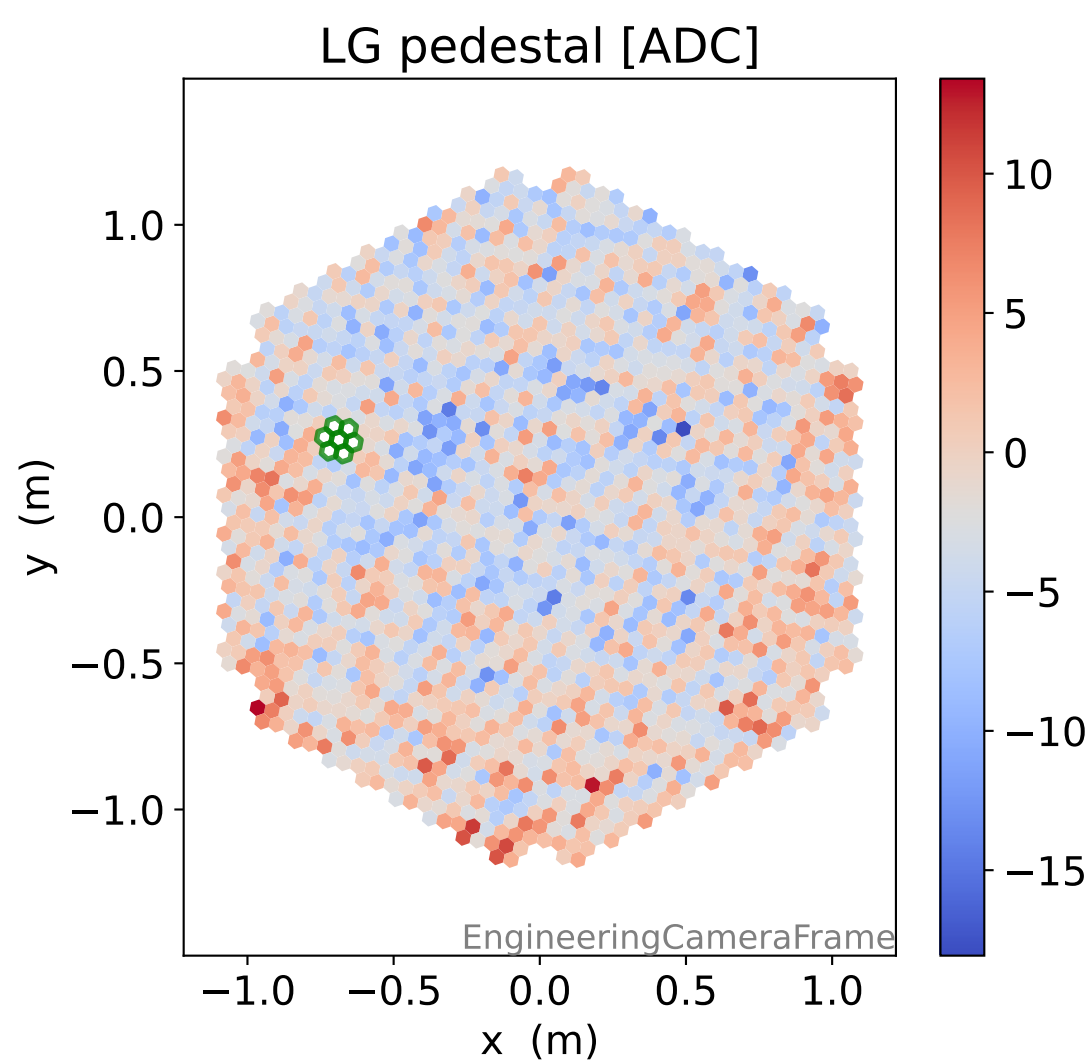
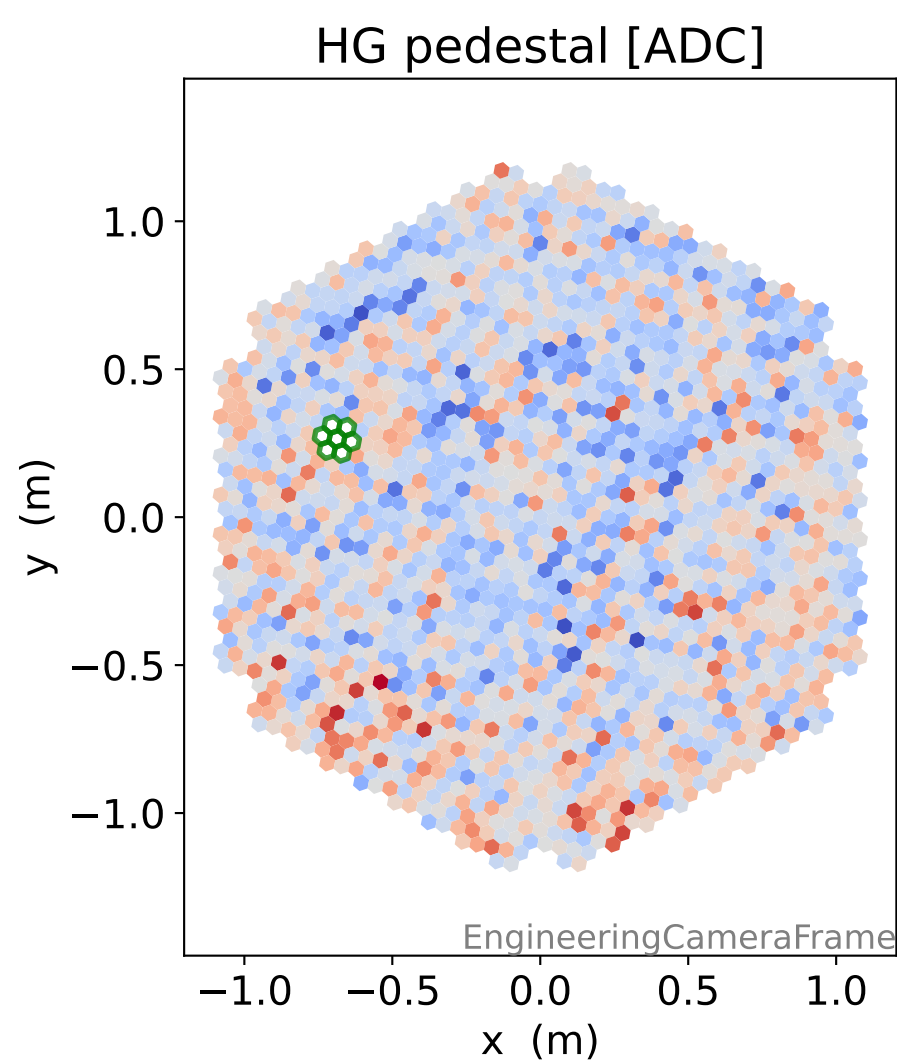
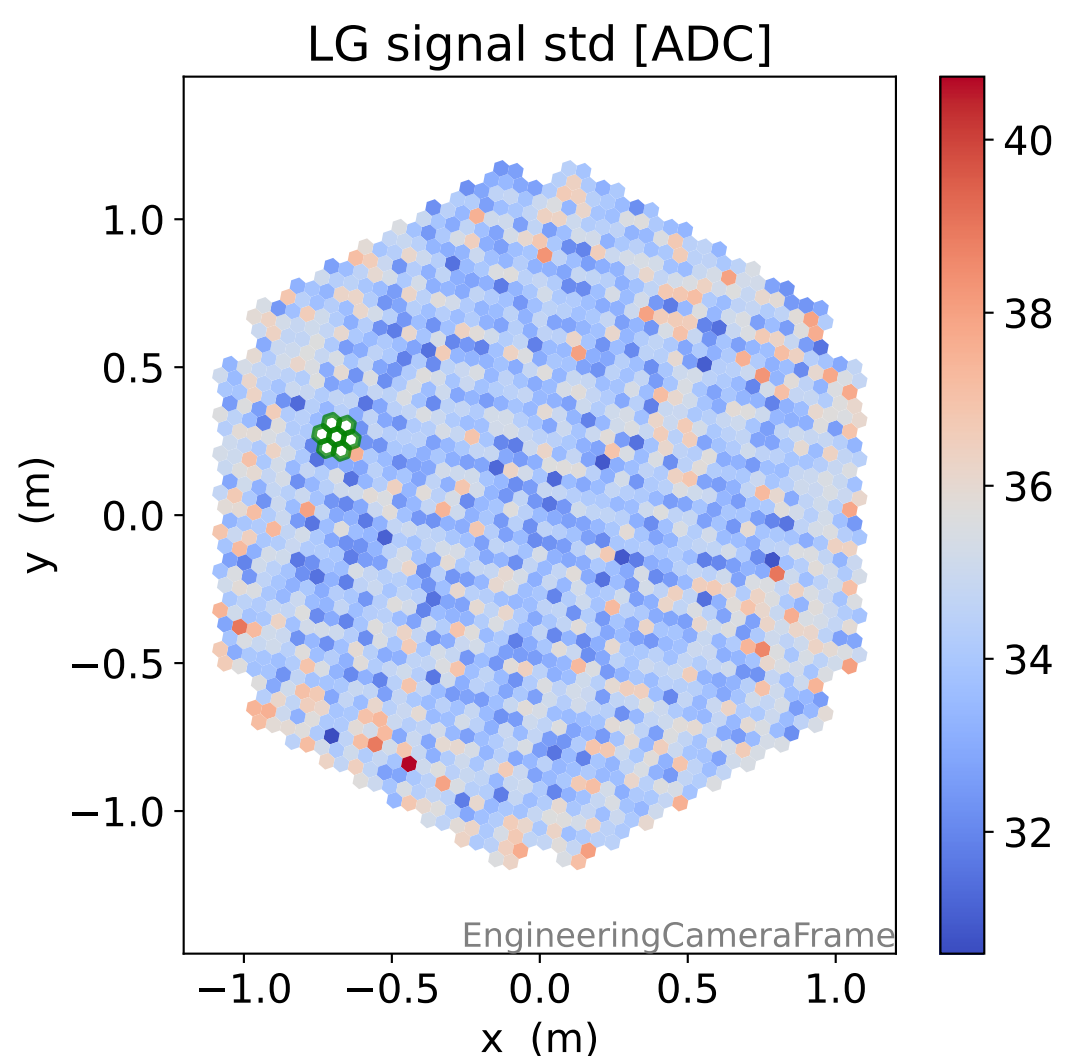
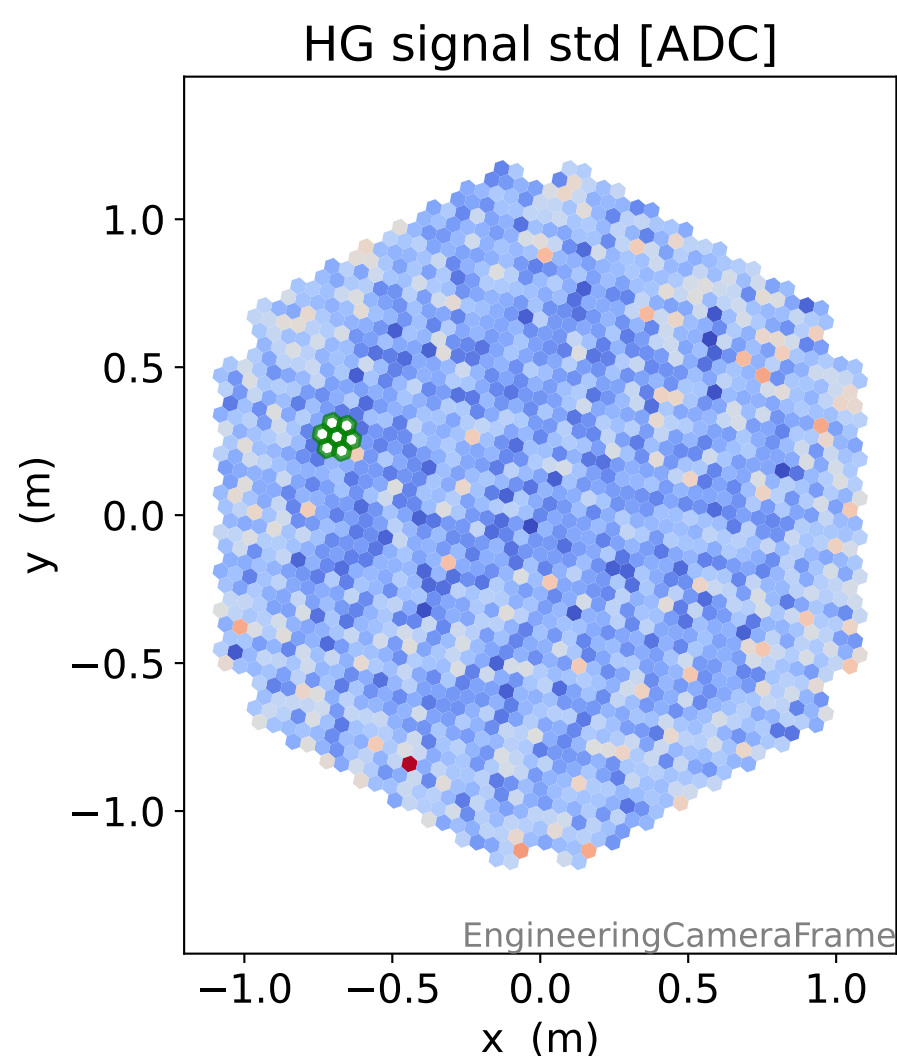
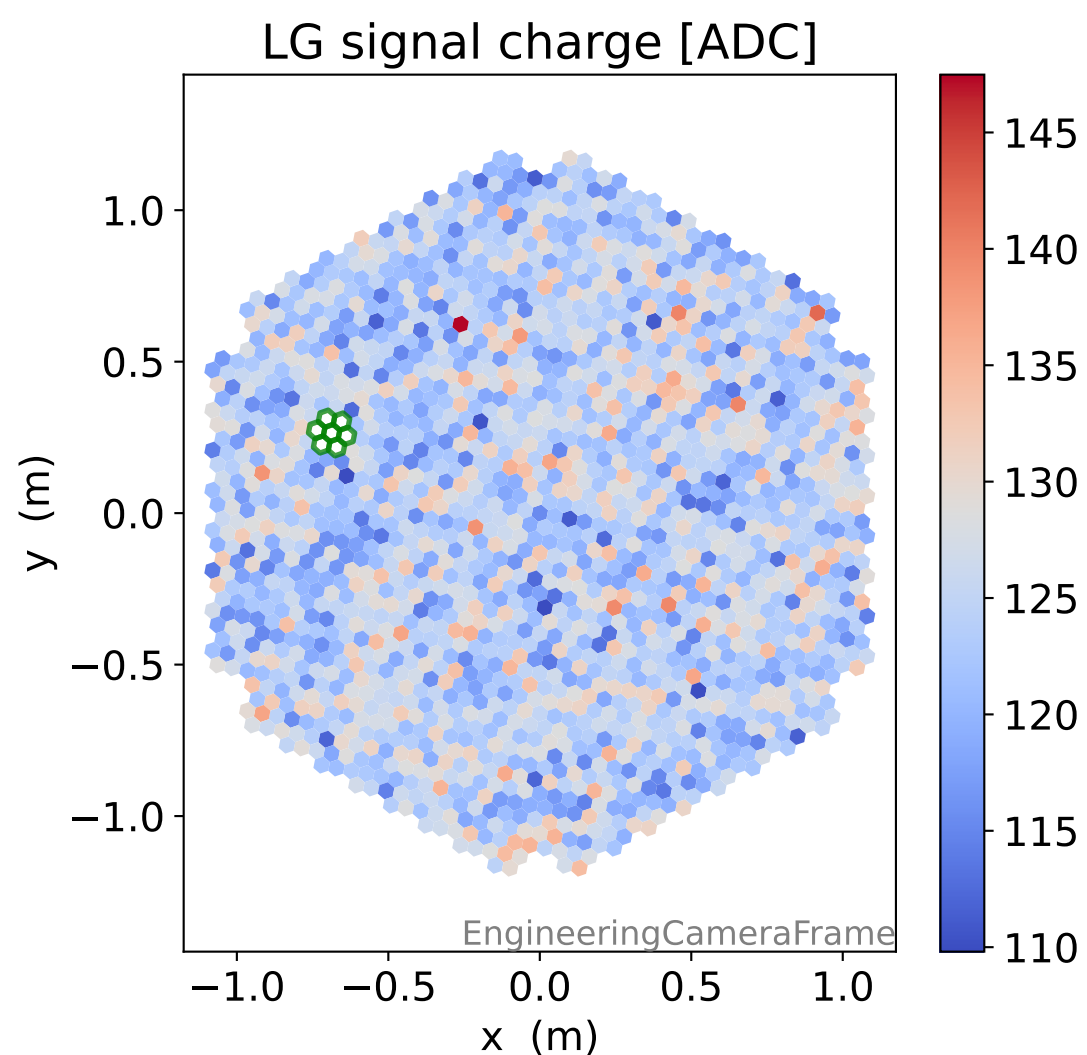
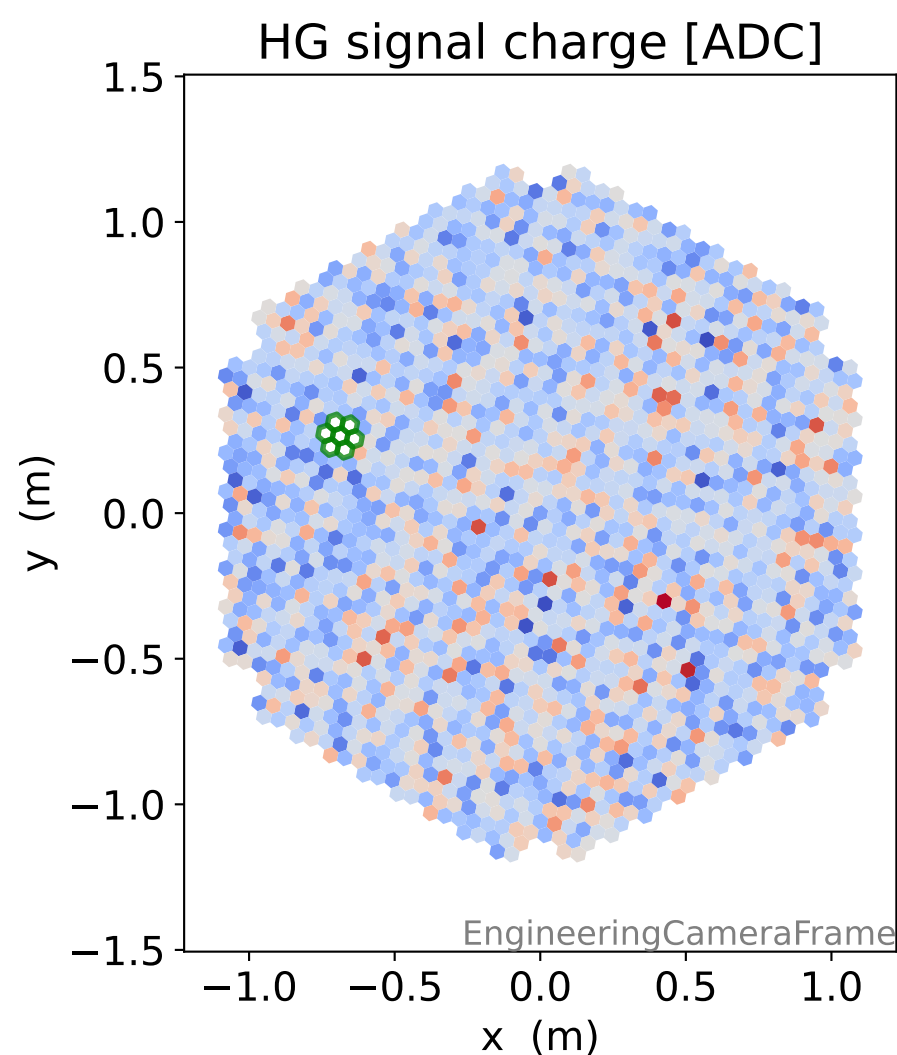
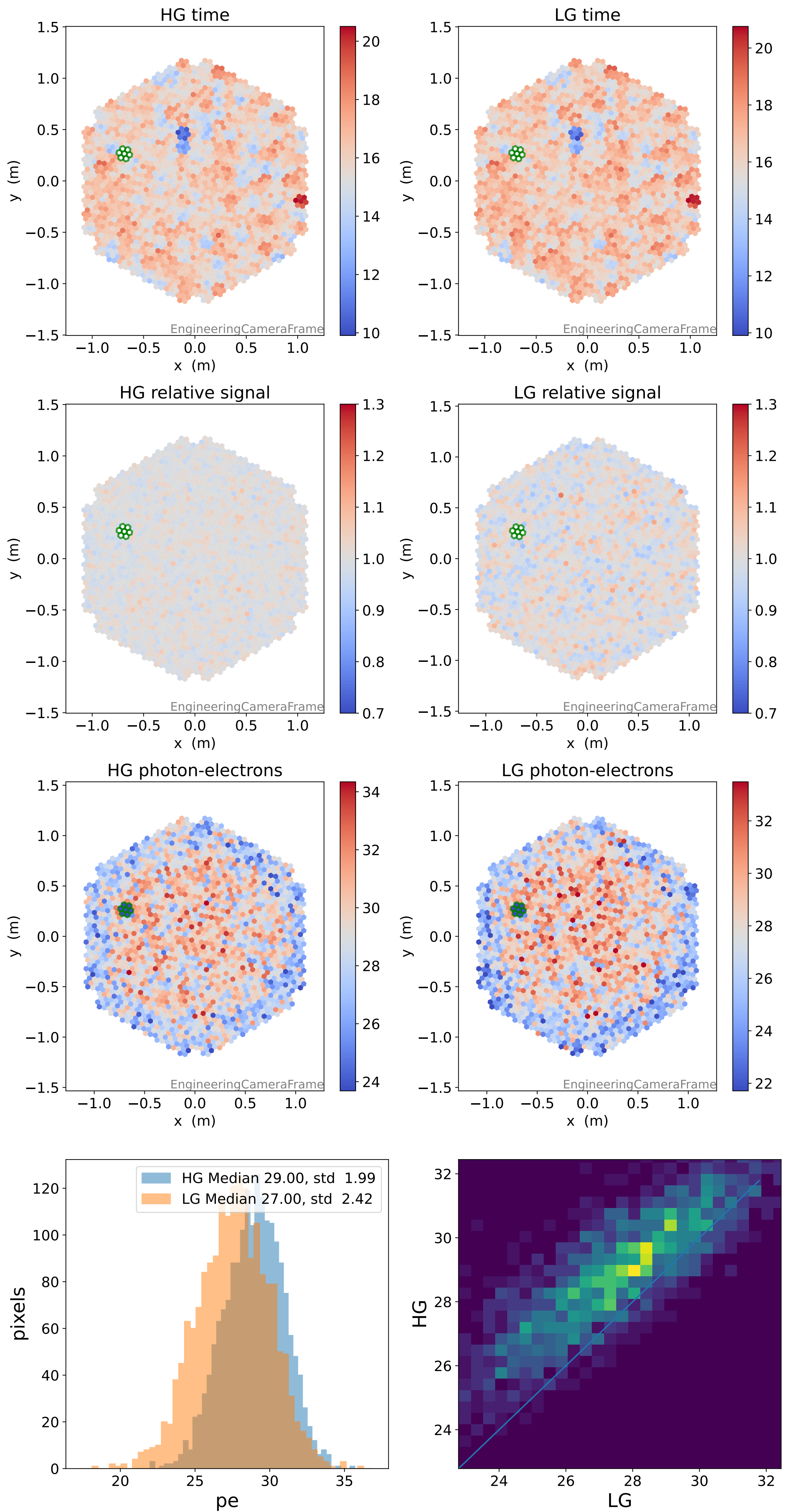


# Run 7501

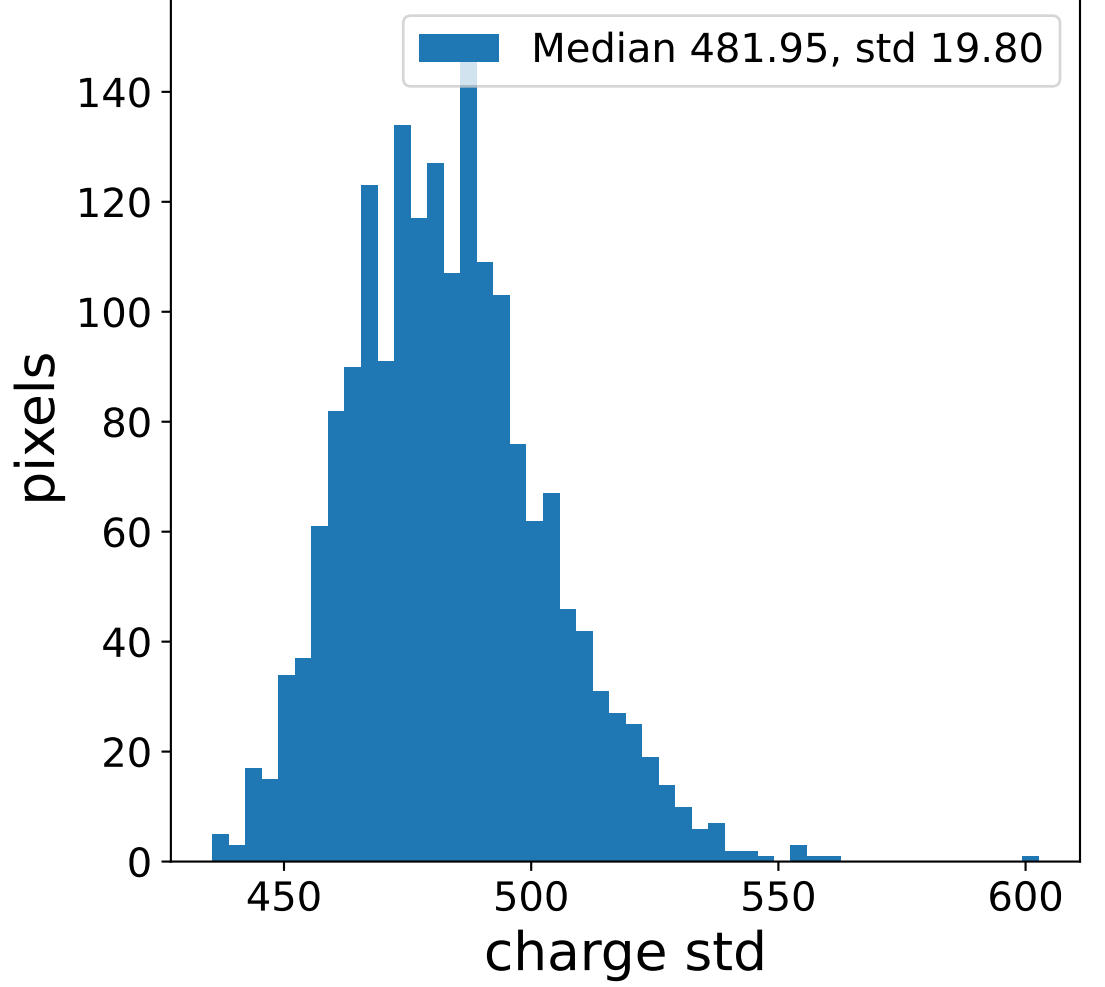
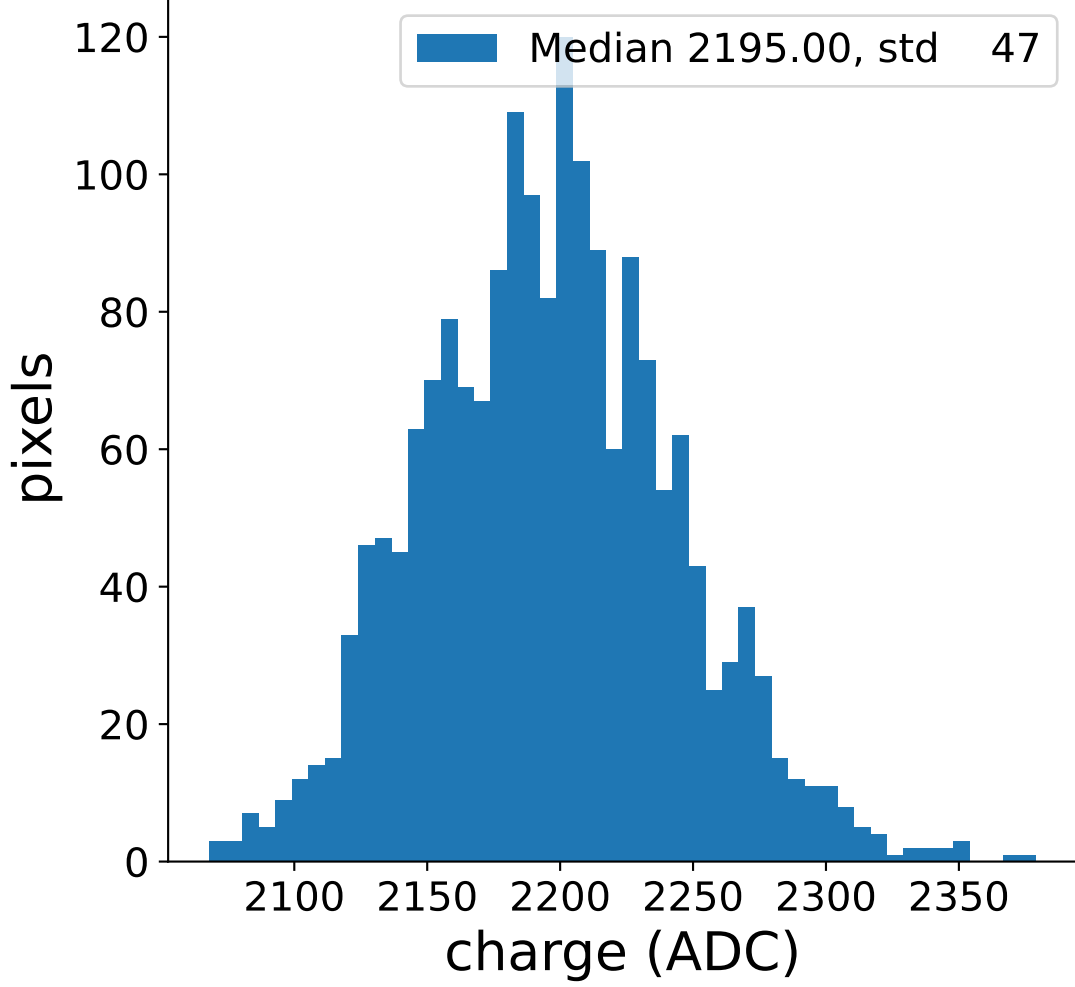


# Run 7501

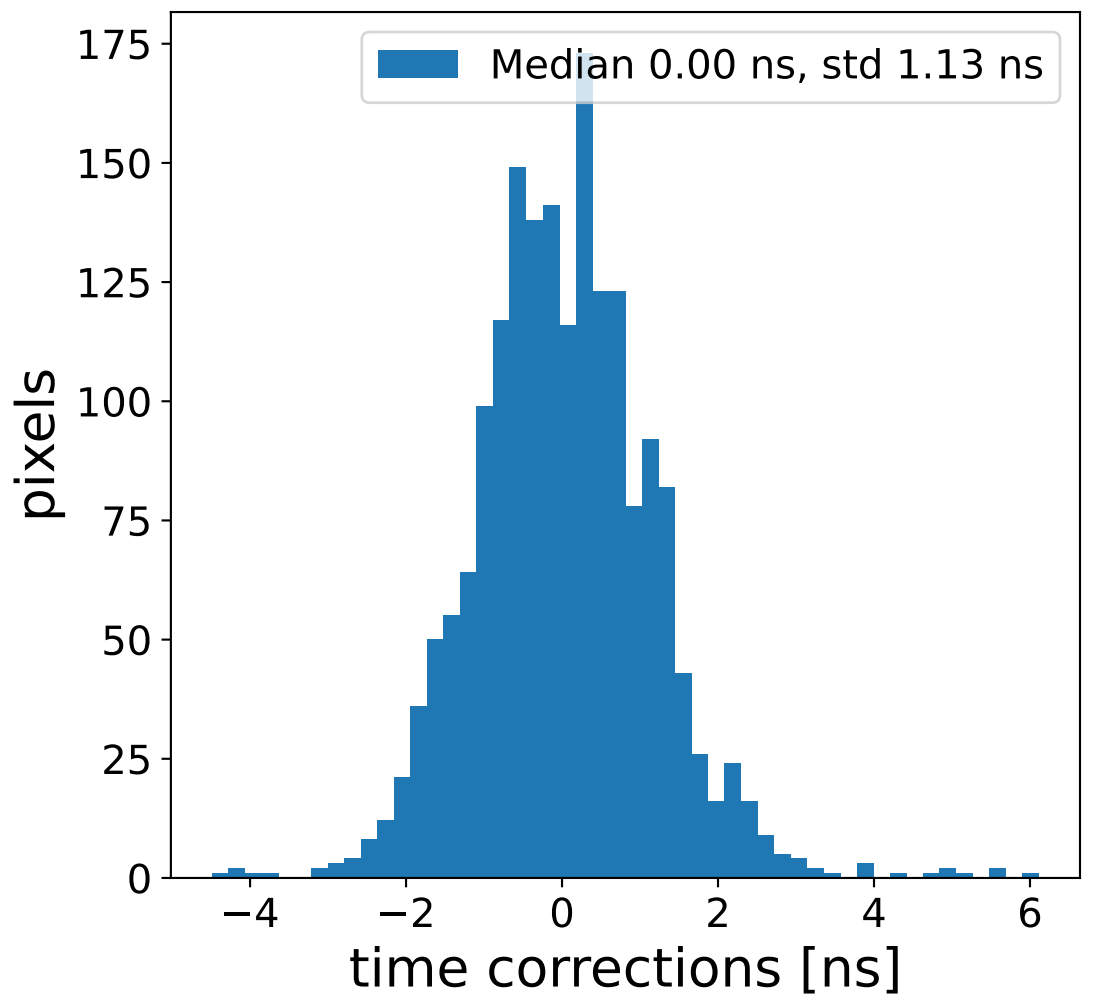
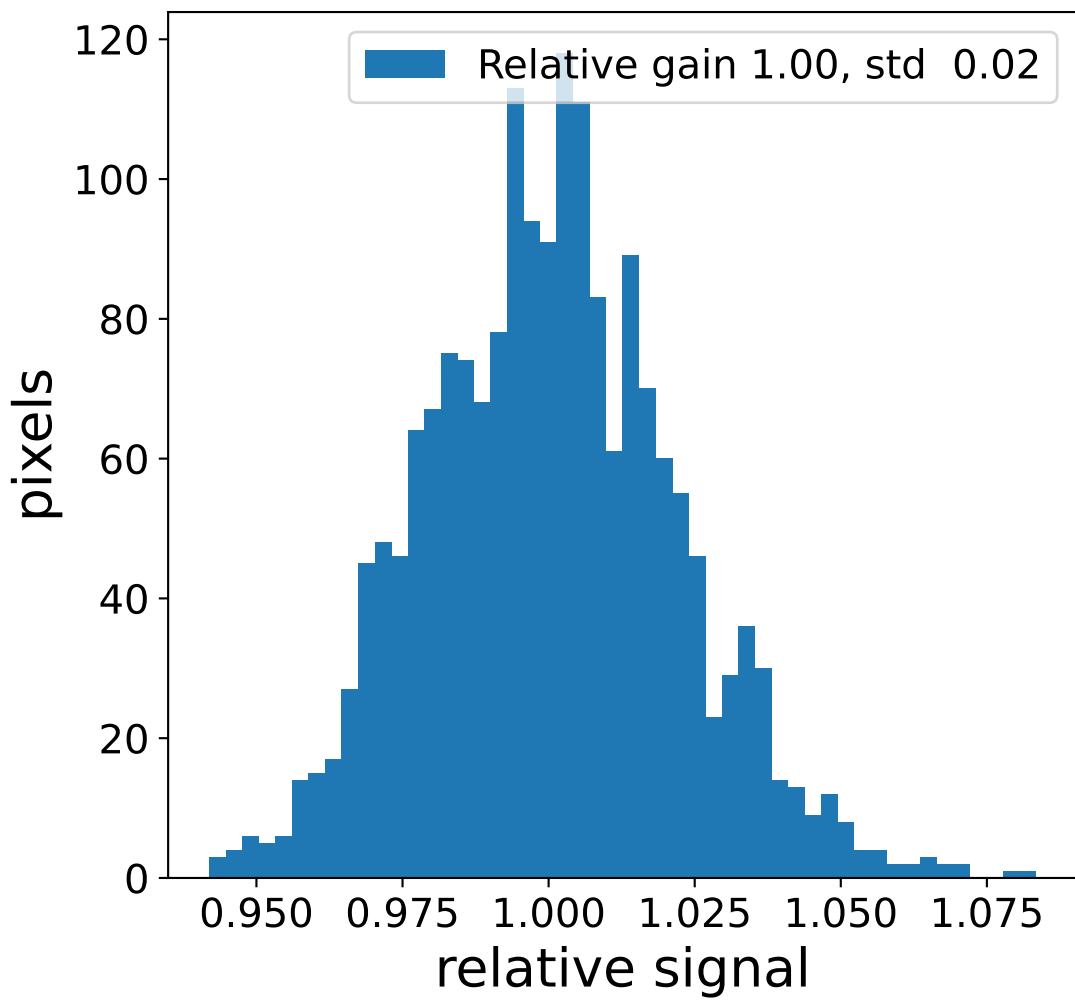
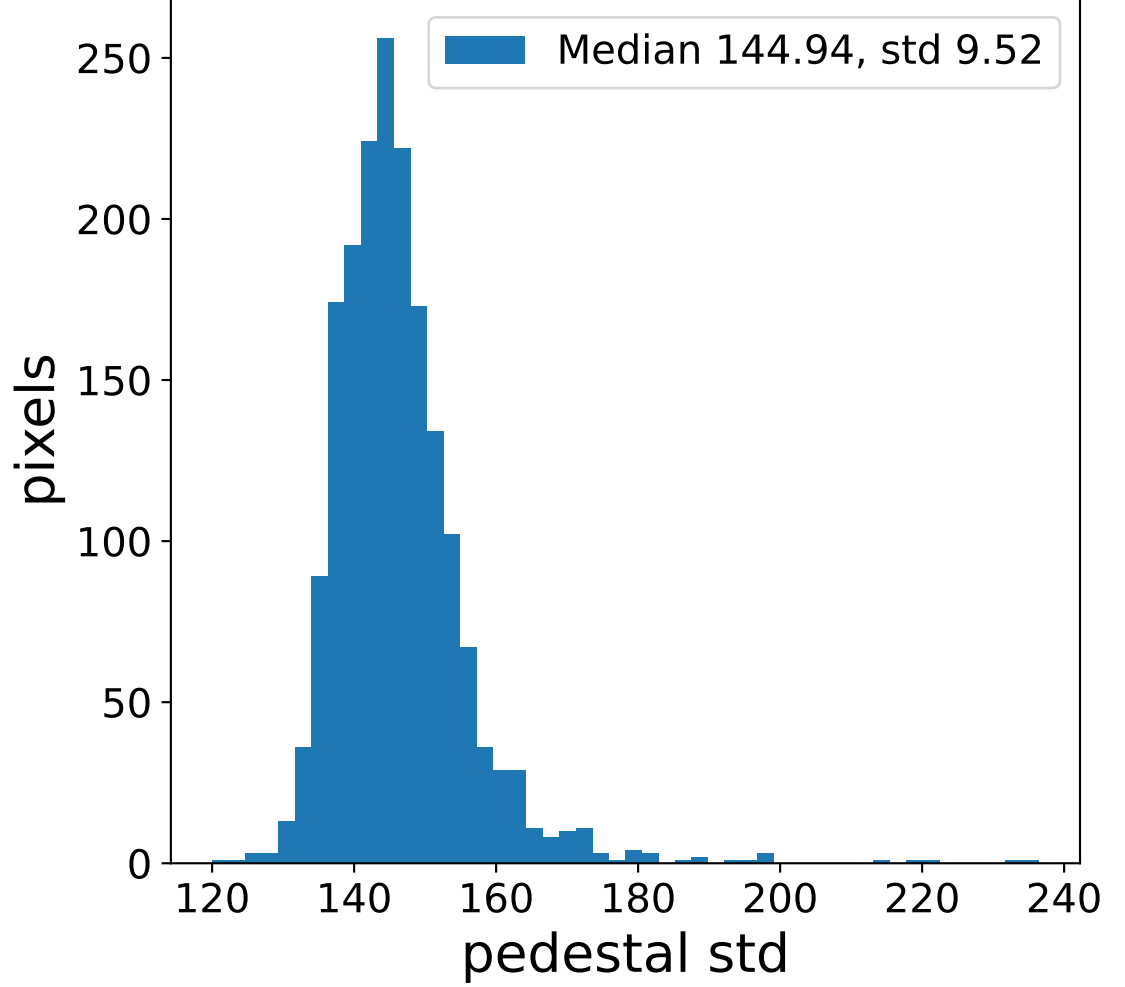
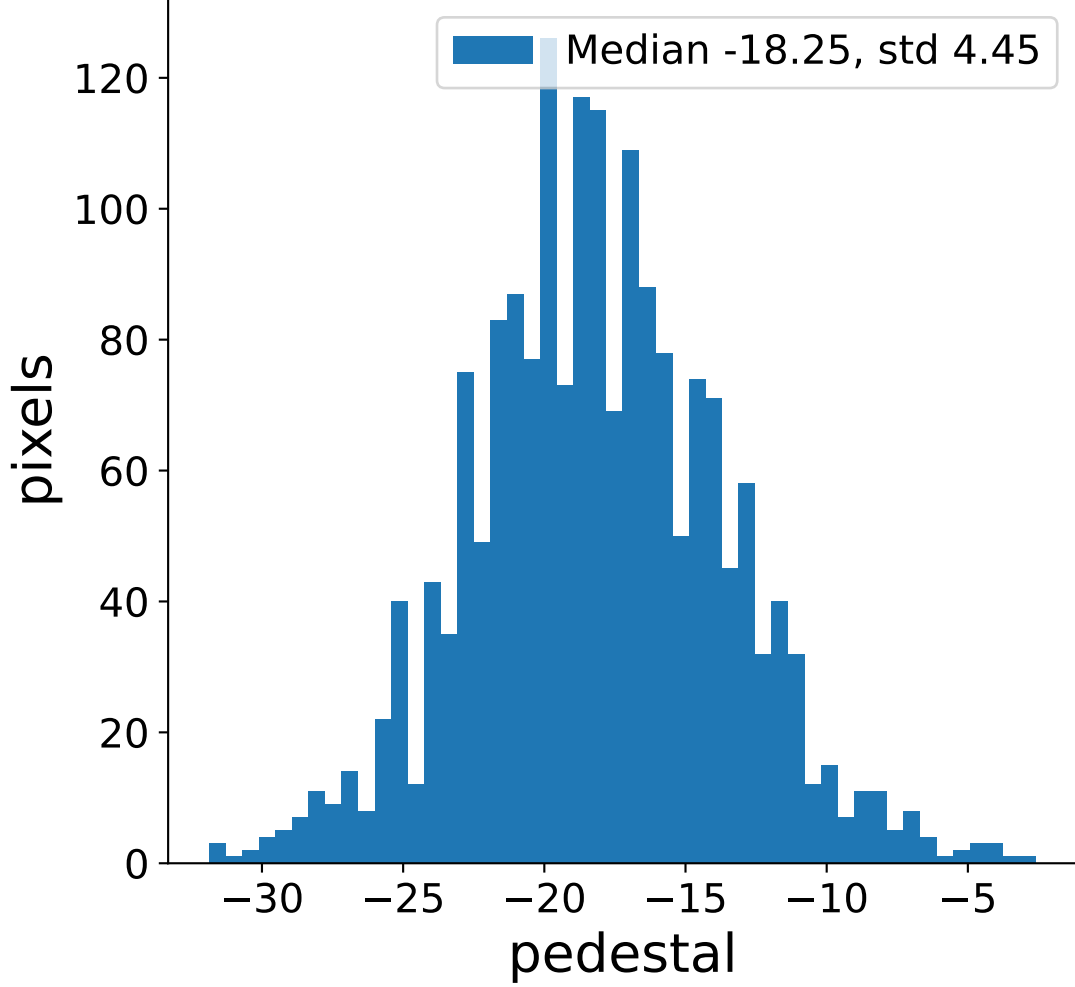


# Run 7501 channel: HG

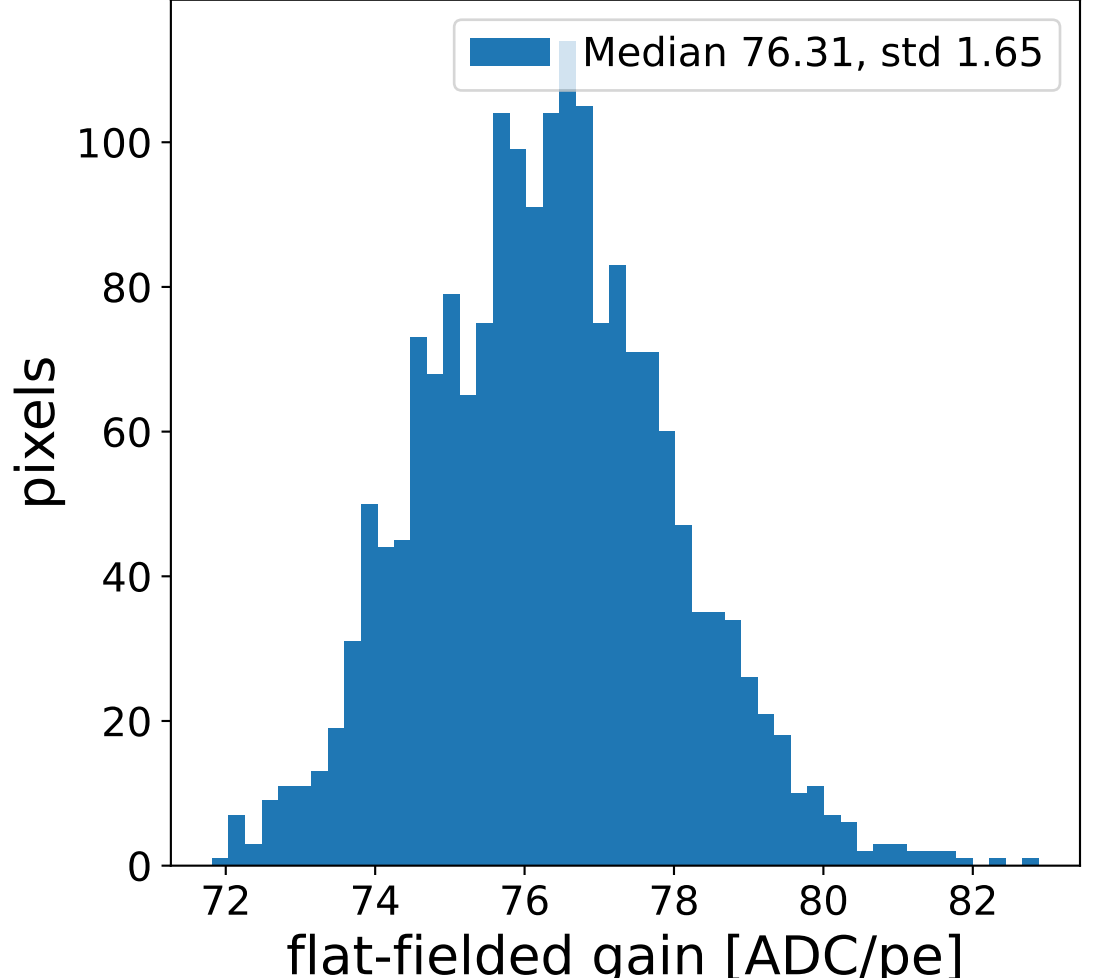
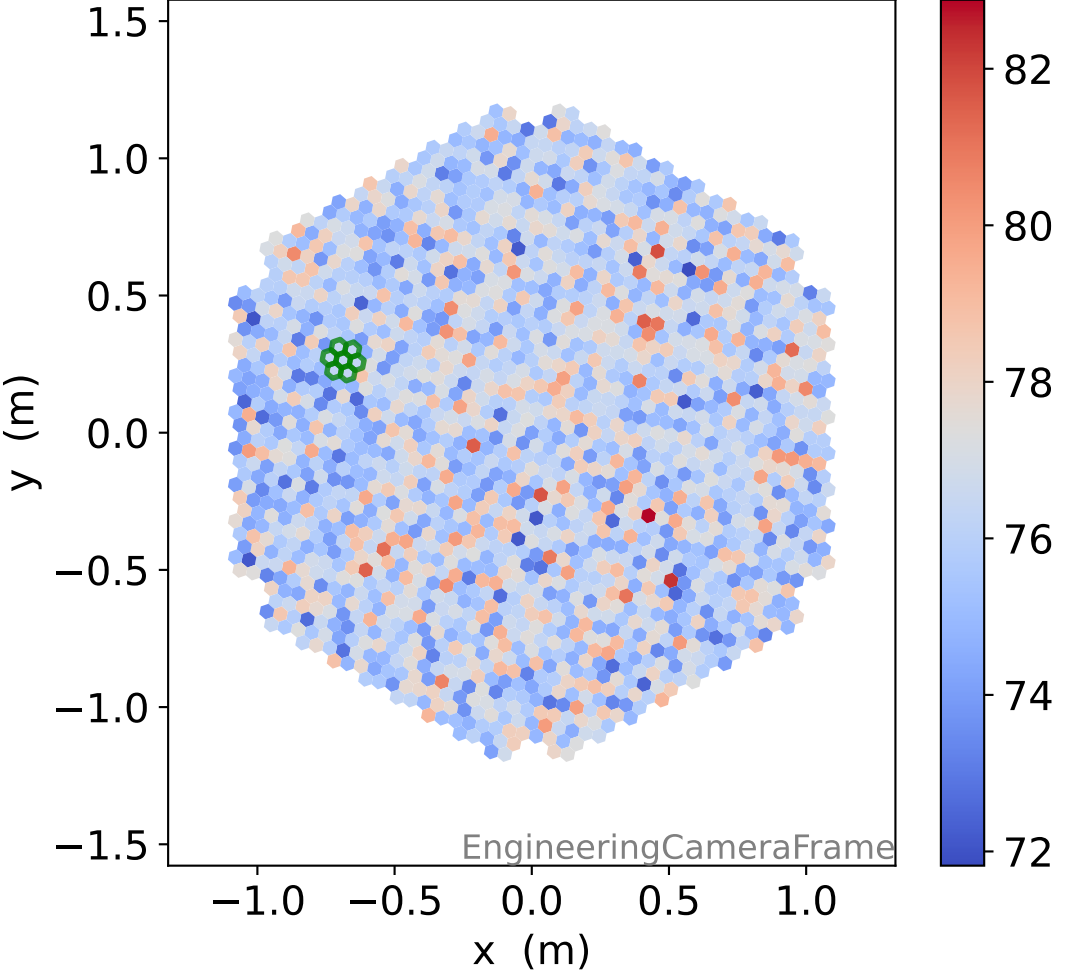
### FF sample of 10000 events



### pedestal sample of 10000 events

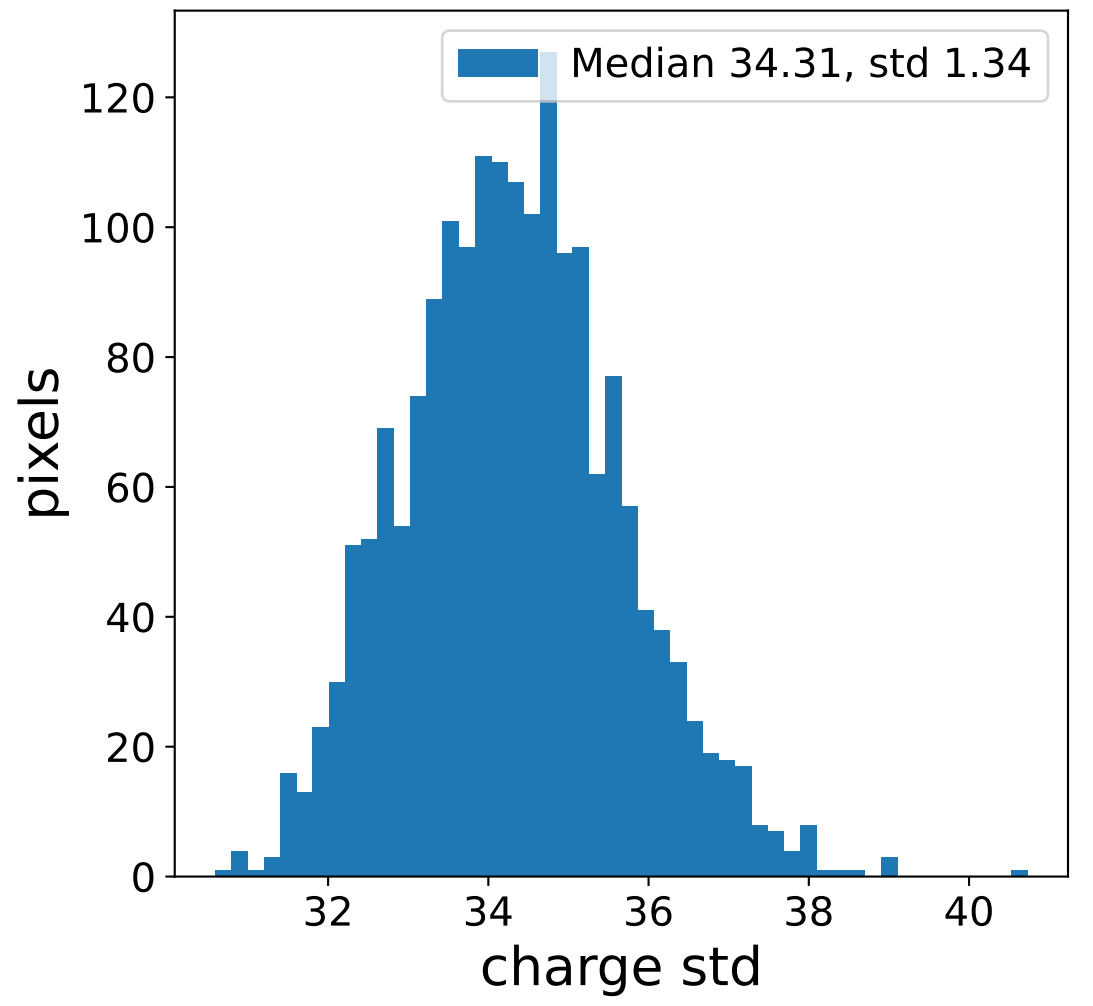
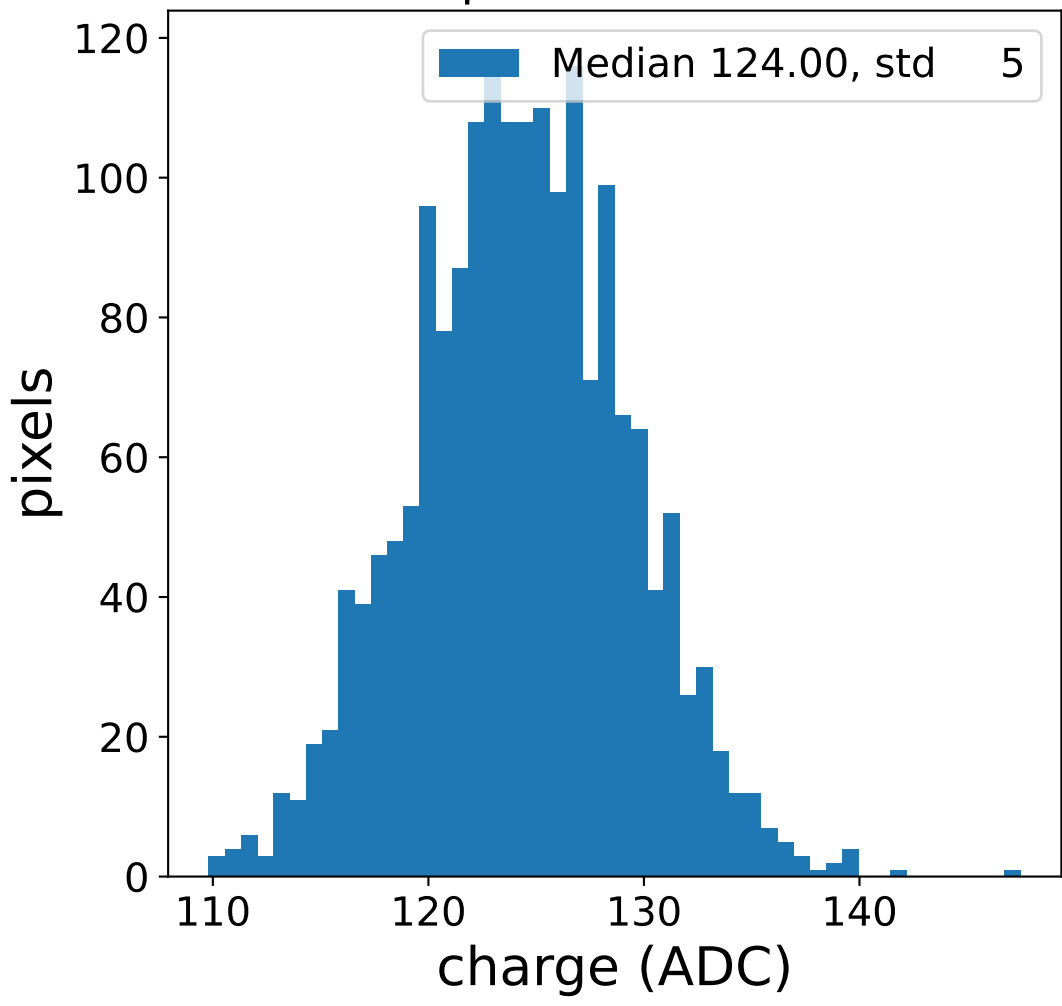


### flat-fielded gain [ADC/pe]

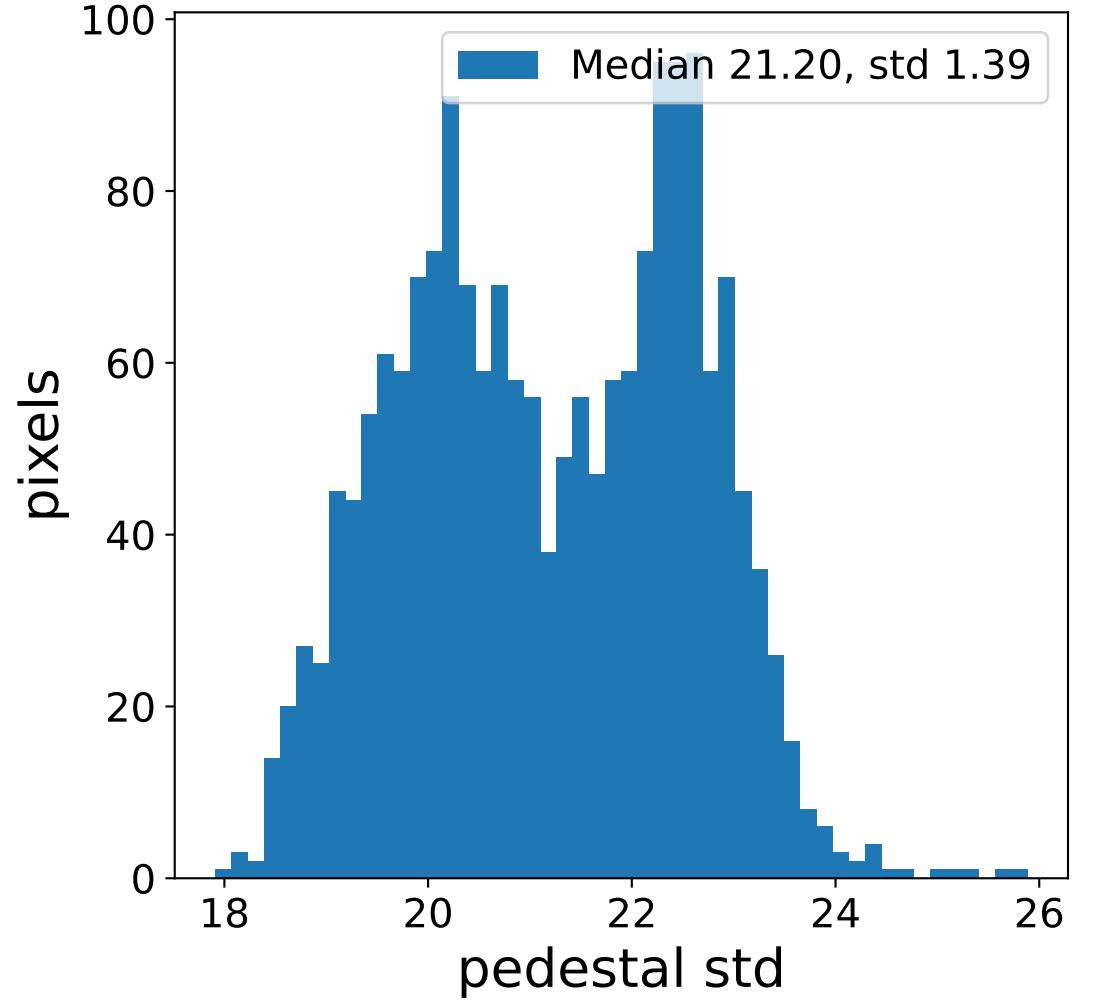
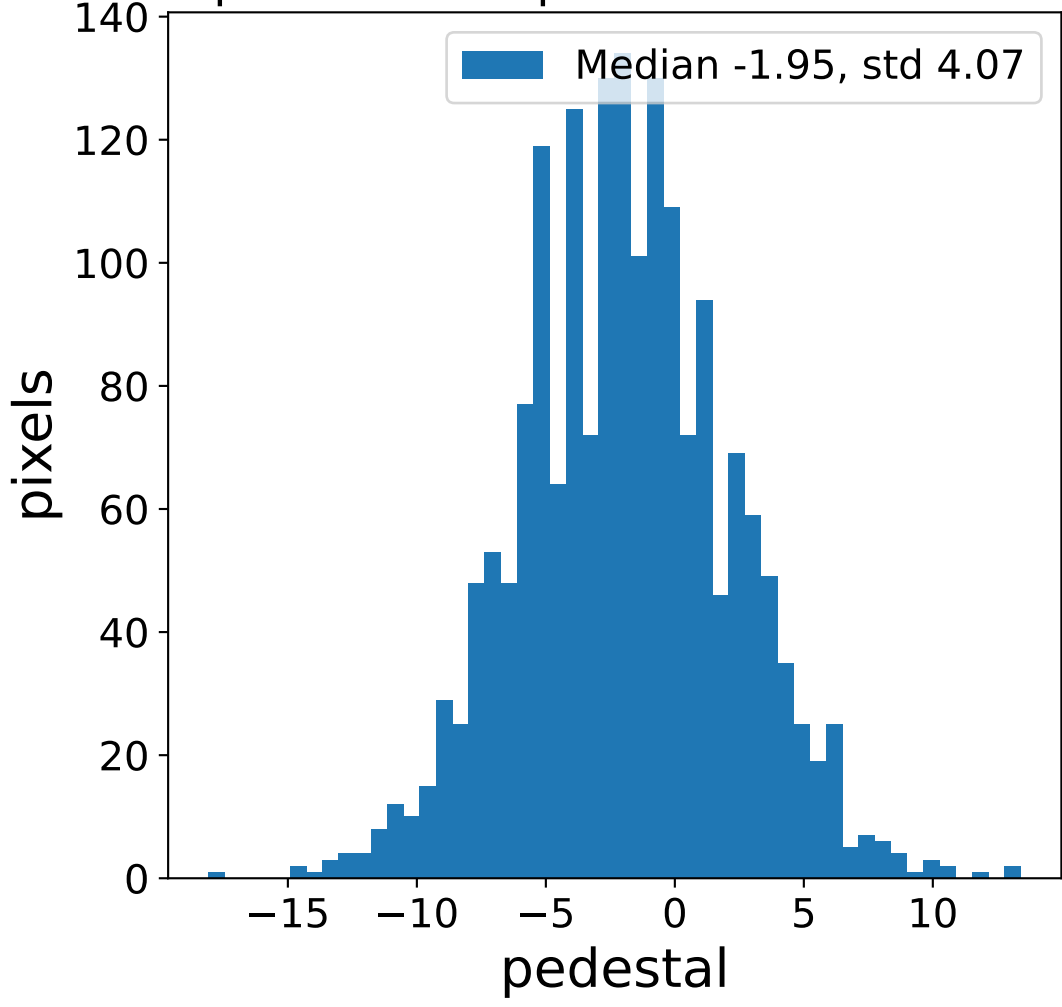


# Run 7501 channel: LG

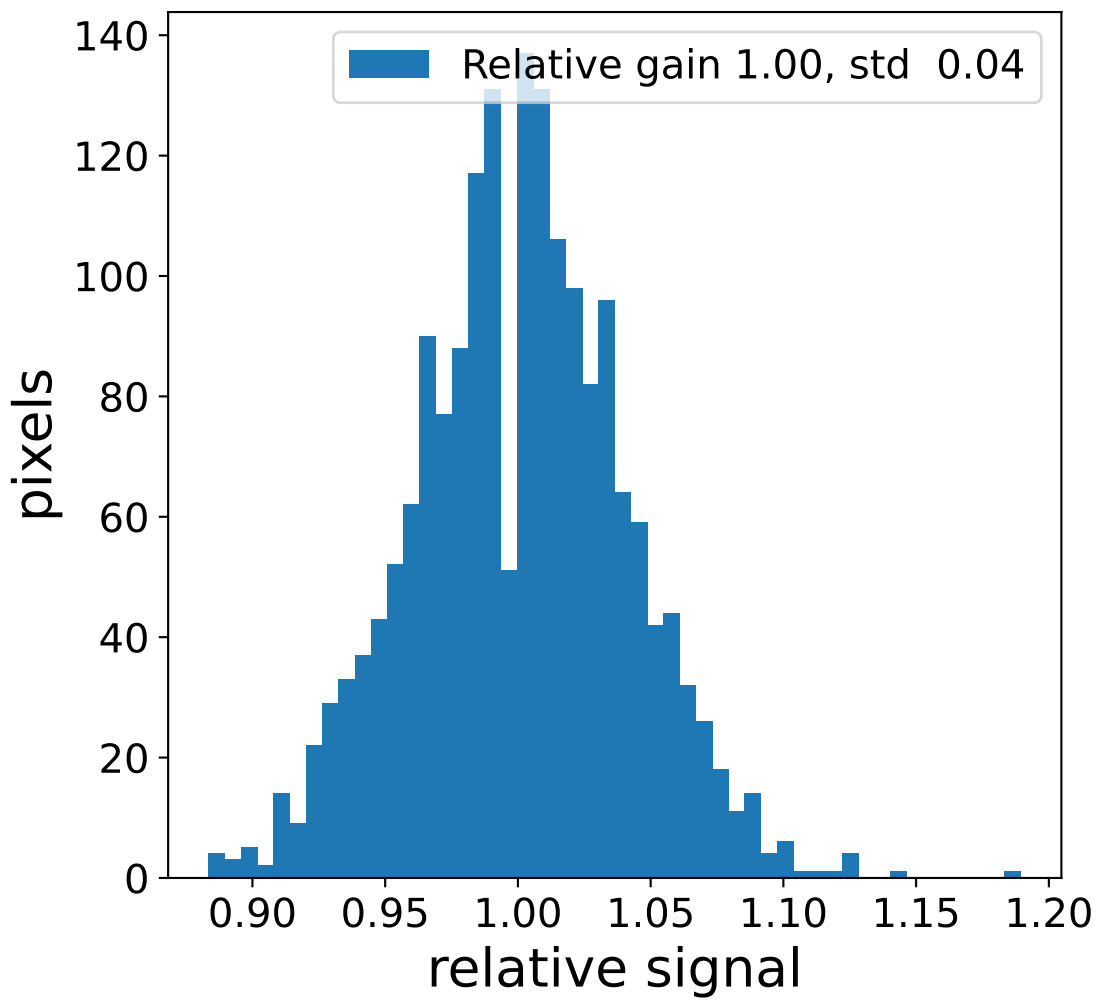
### FF sample of 10000 events



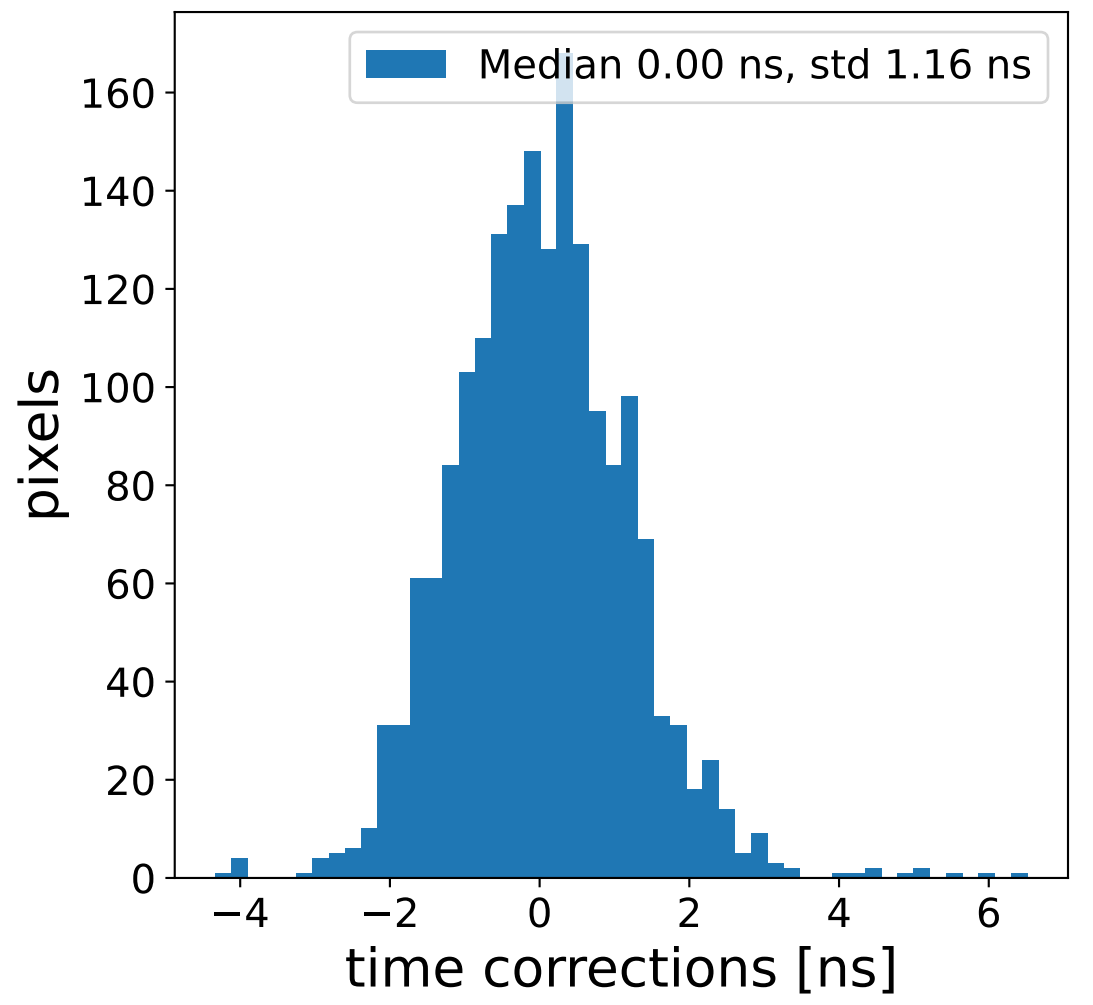
### pedestal sample of 10000 events



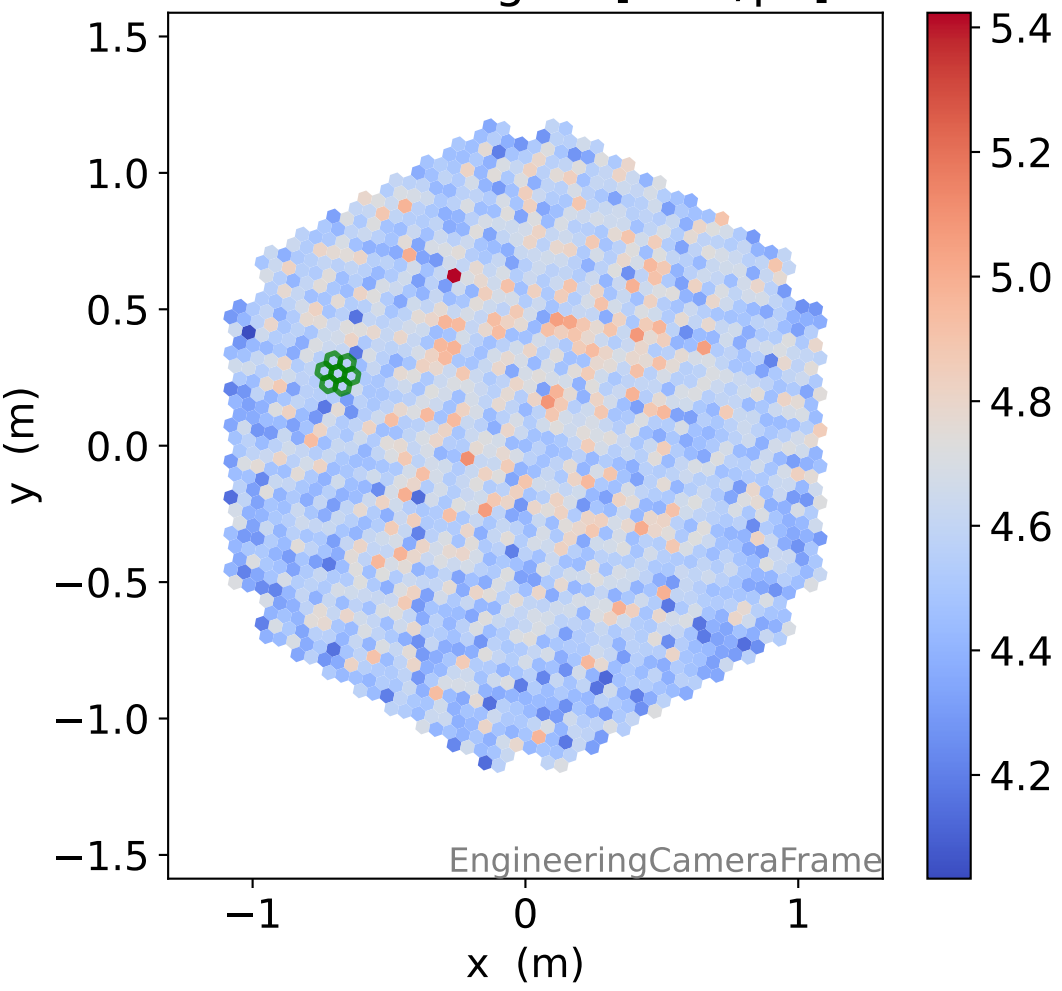
### Relative gain 1.00, std 0.04



### Median 0.00 ns, std 1.16 ns



### flat-fielded gain [ADC/pe]



### Median 4.57, std 0.16

