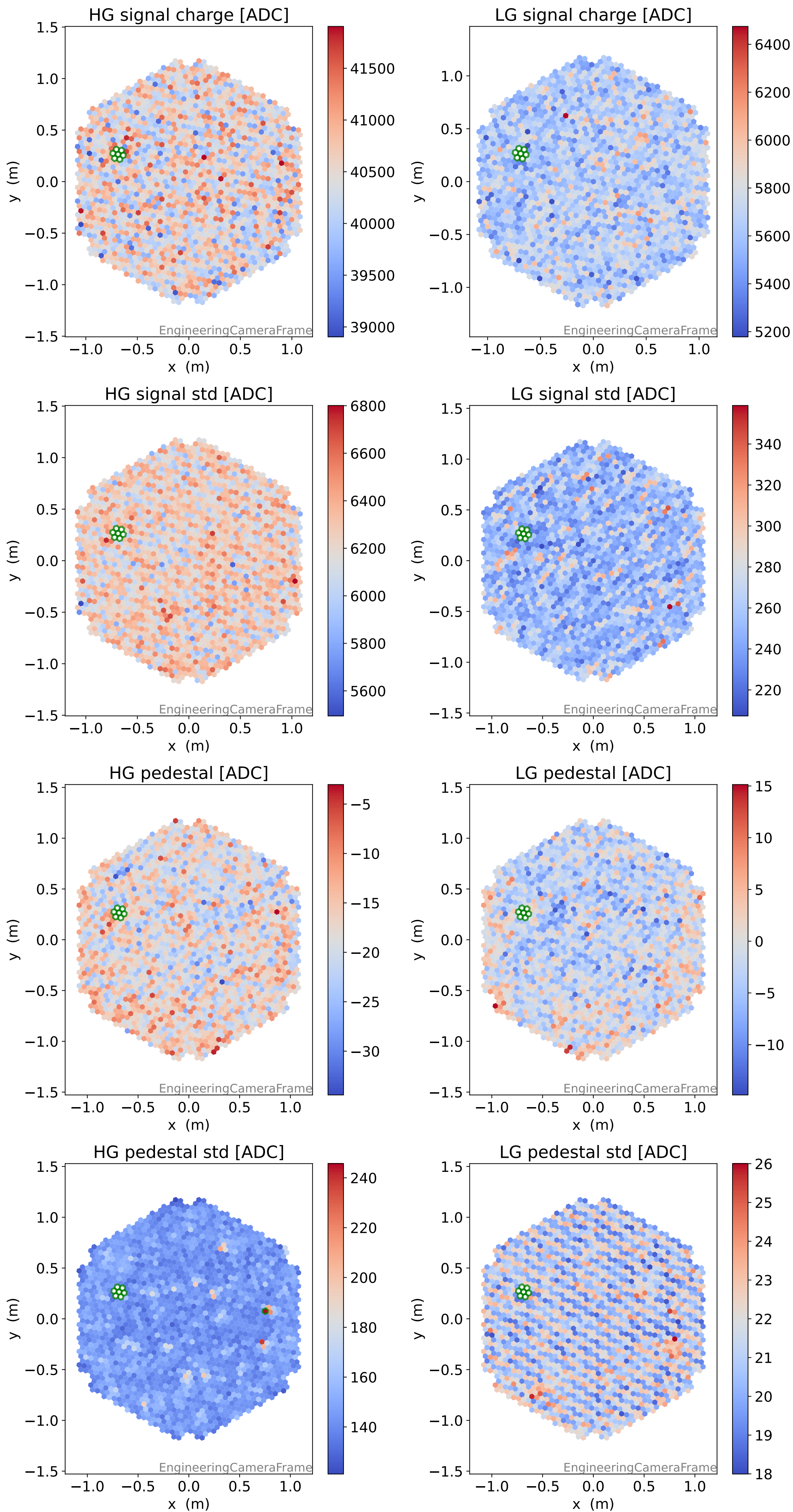
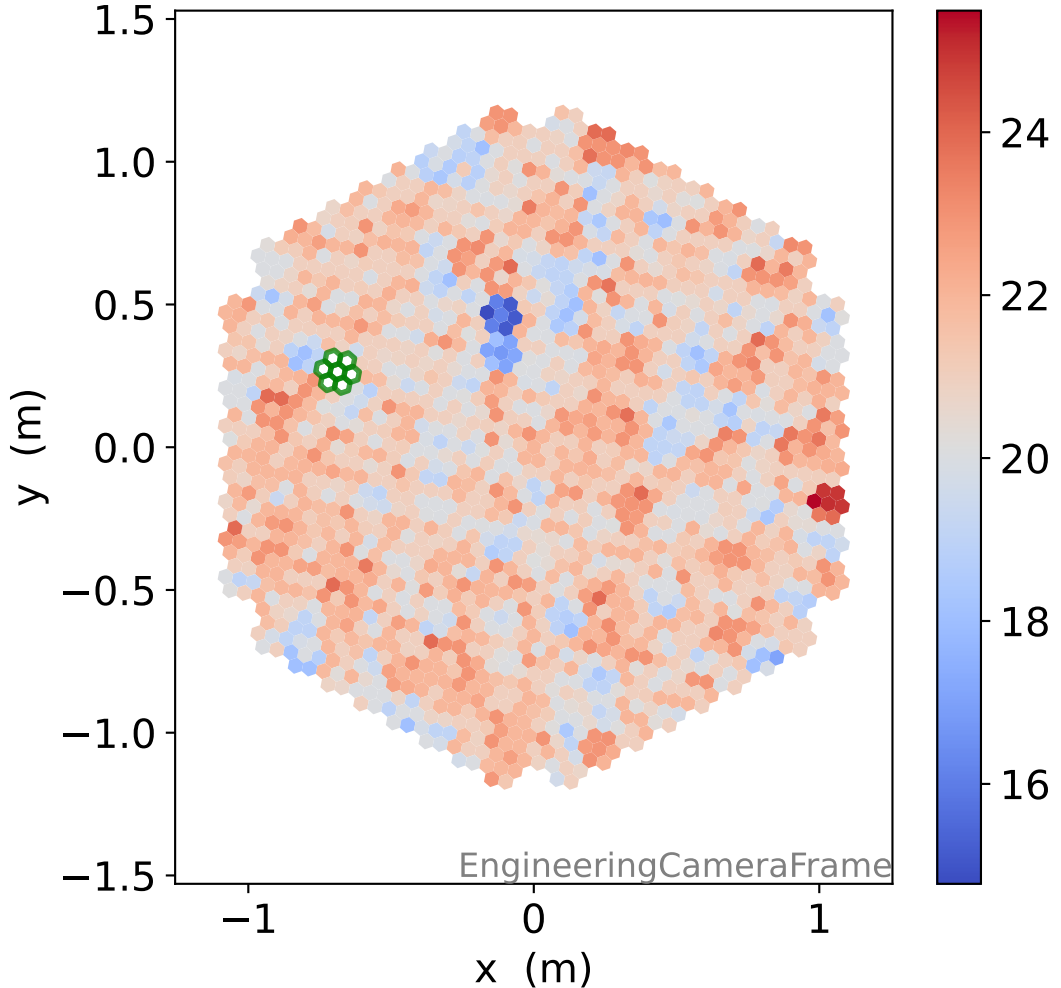


# Run 7498

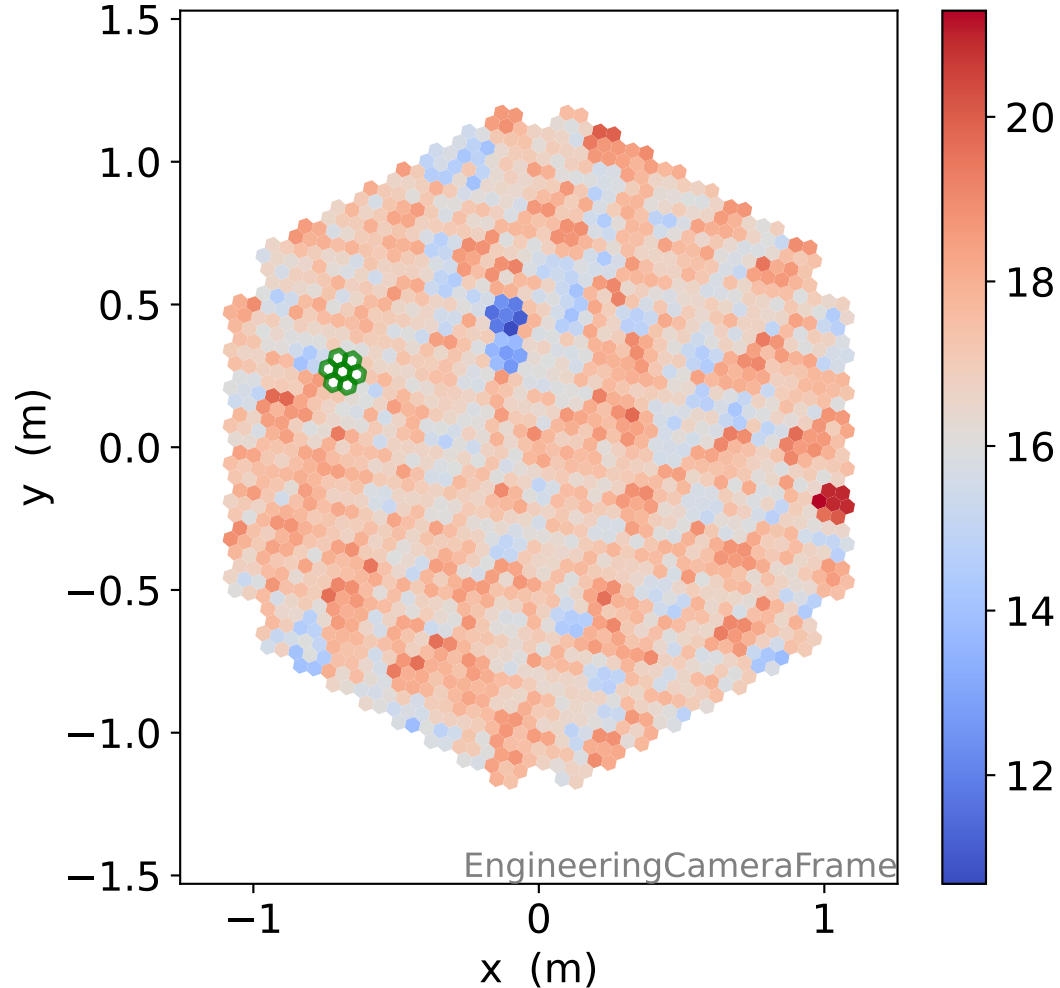


# Run 7498

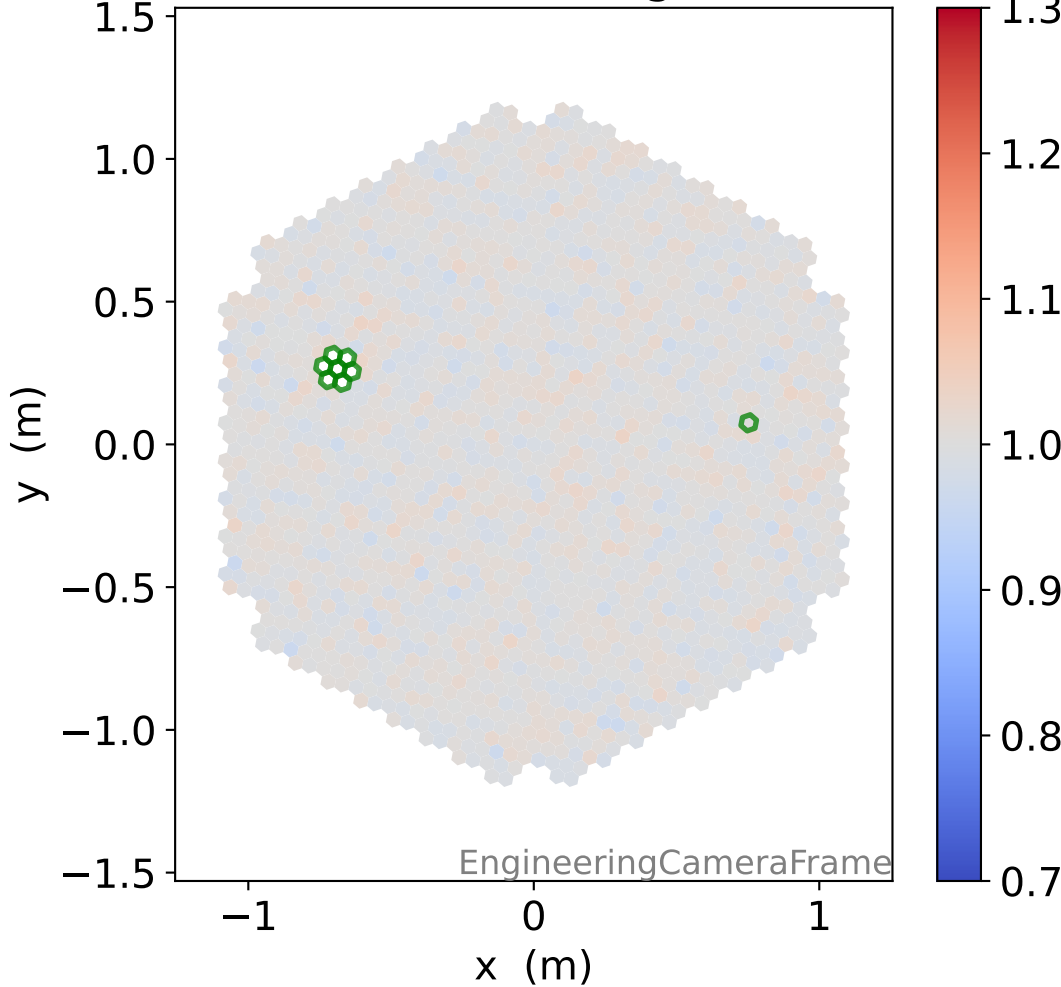
### HG time



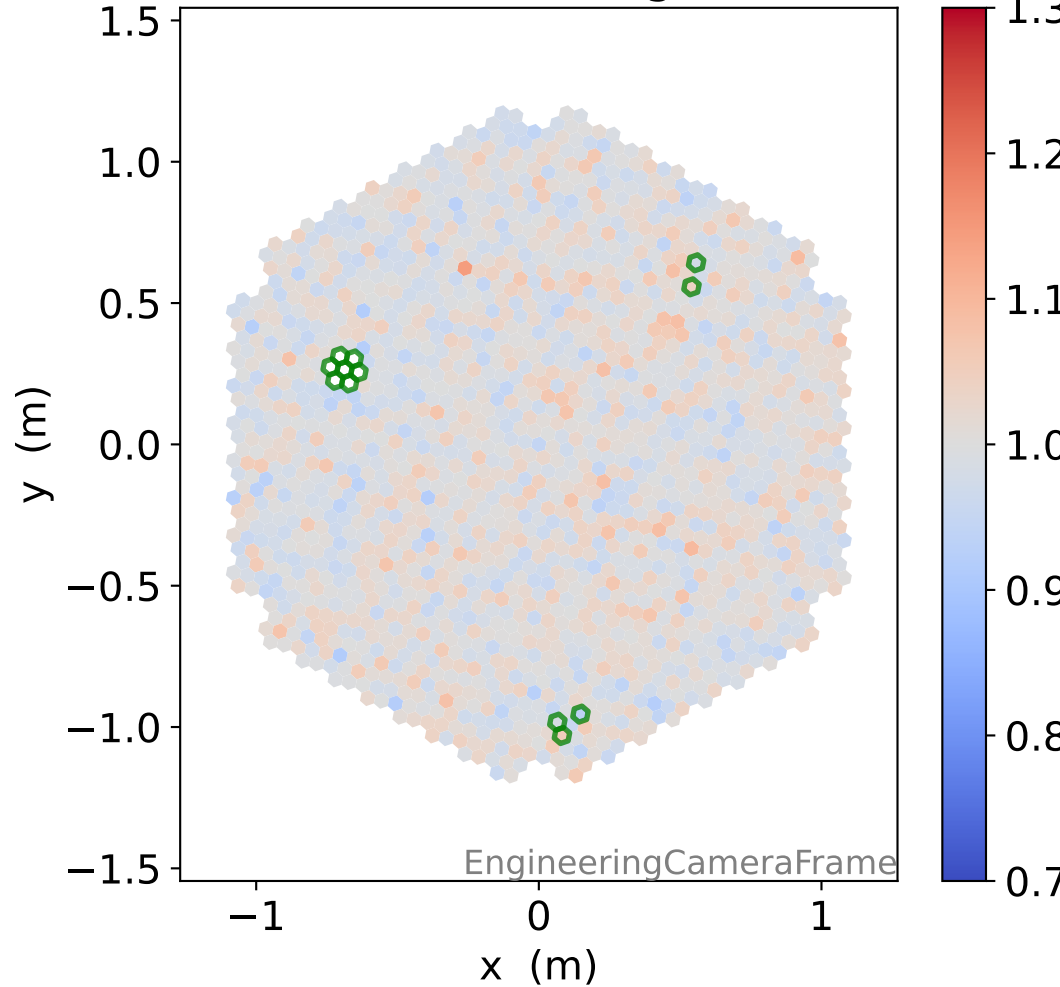
### LG time



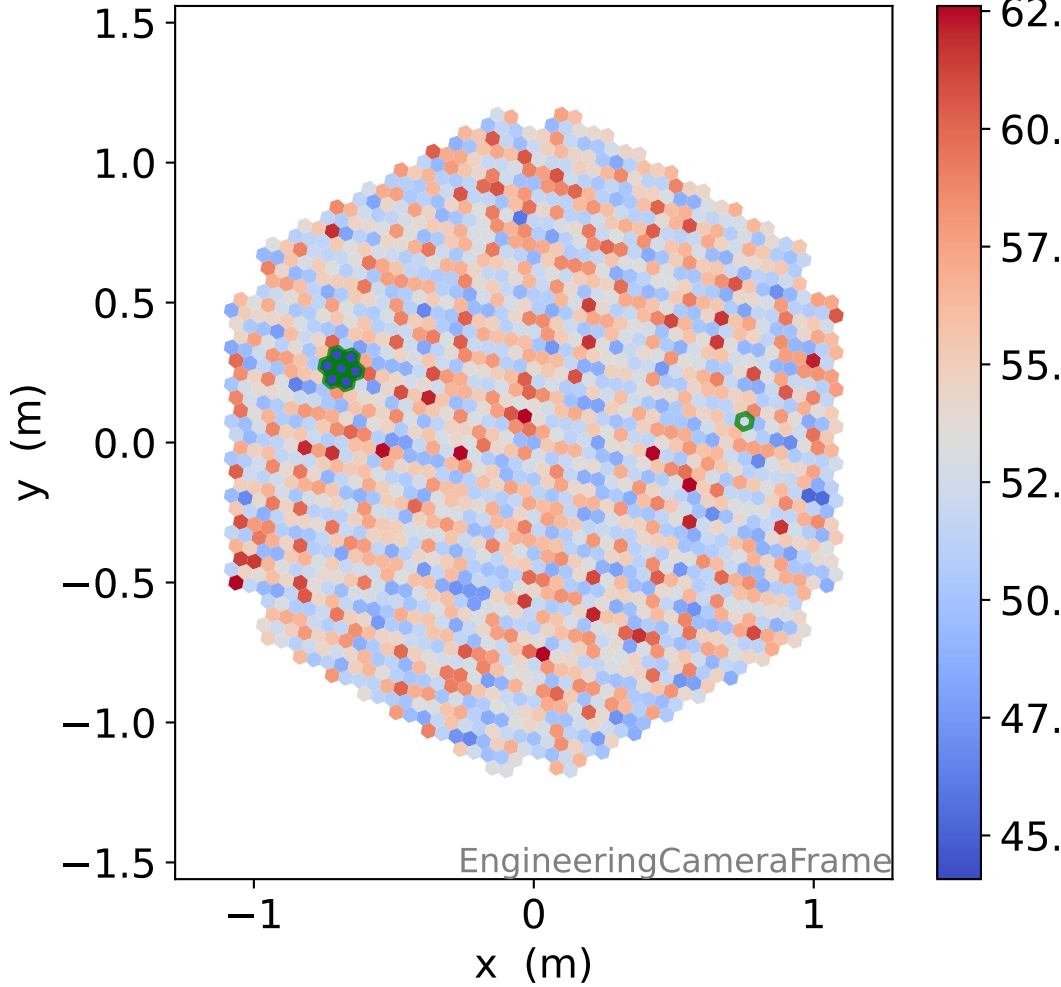
### HG relative signal



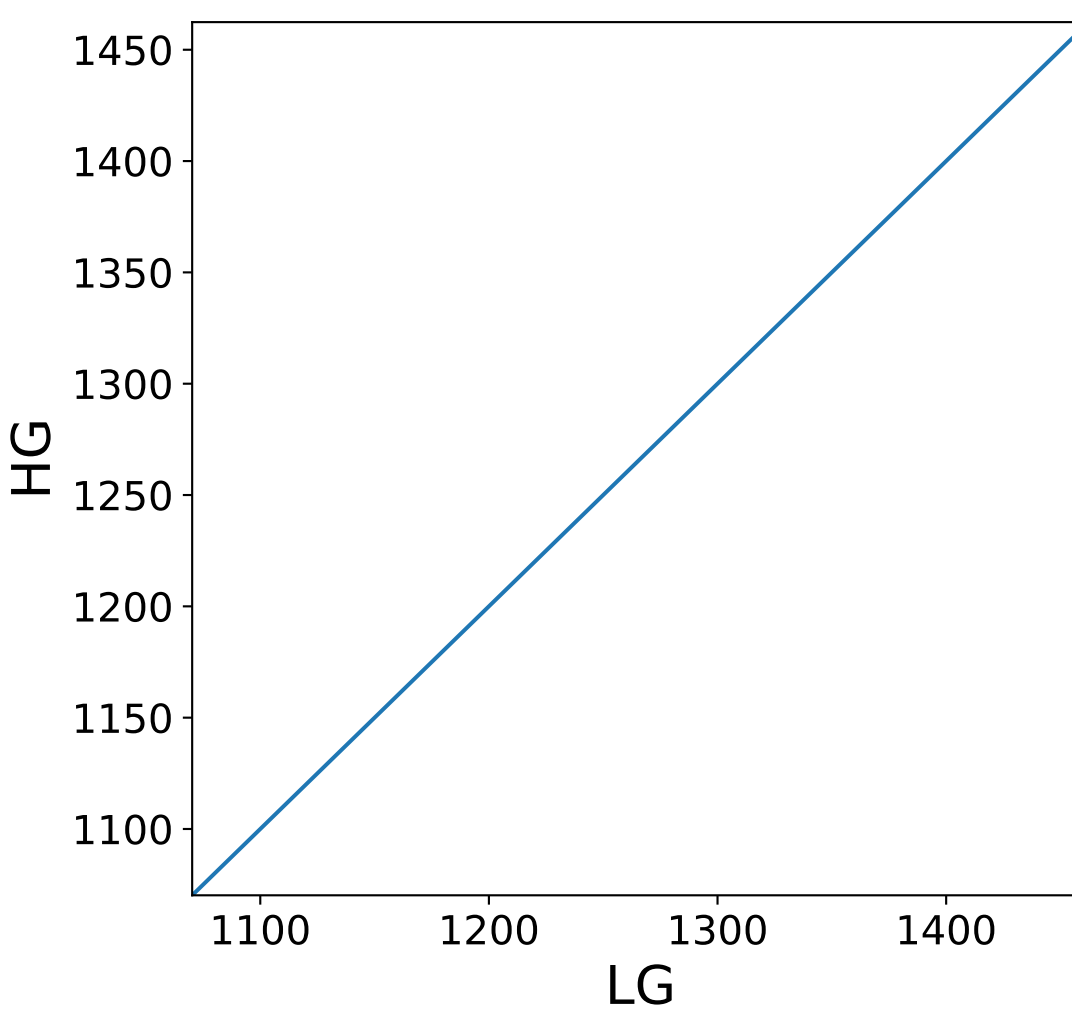
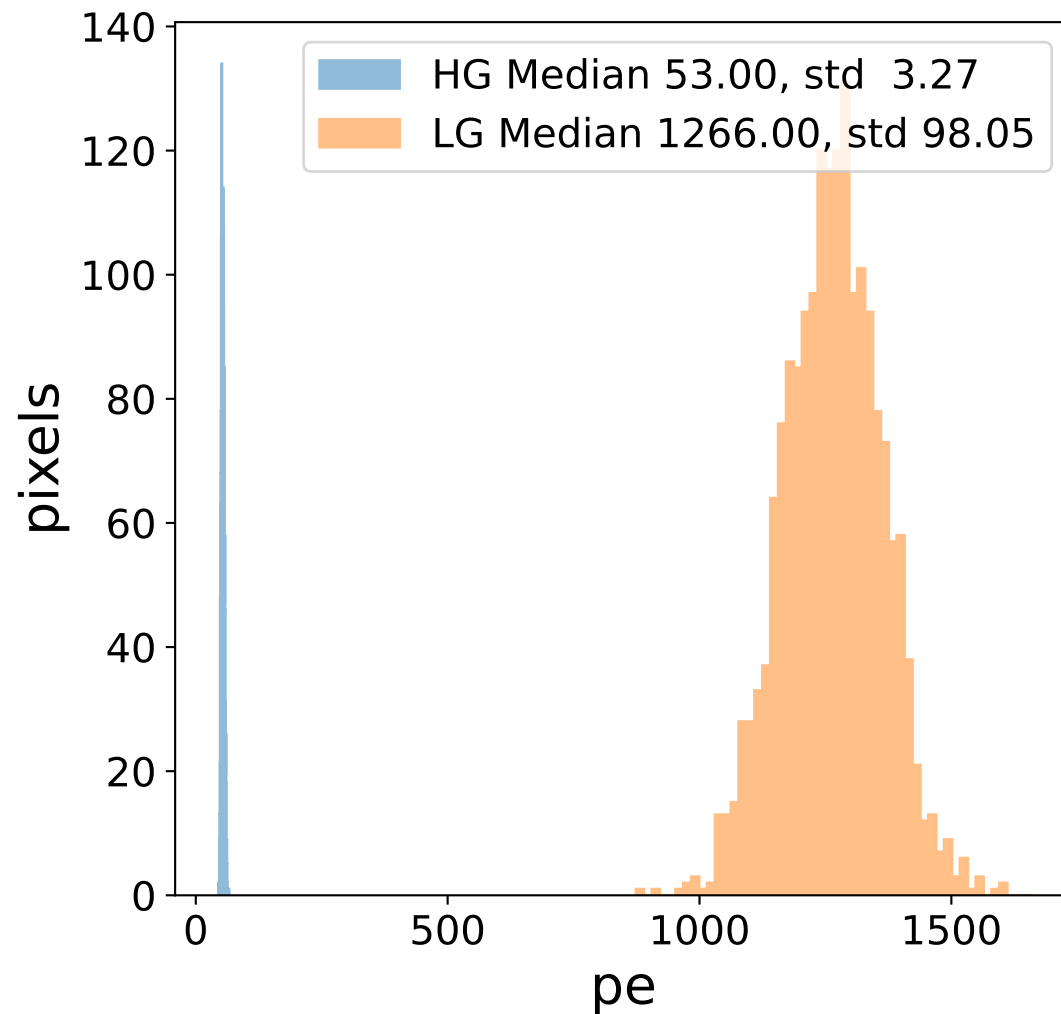
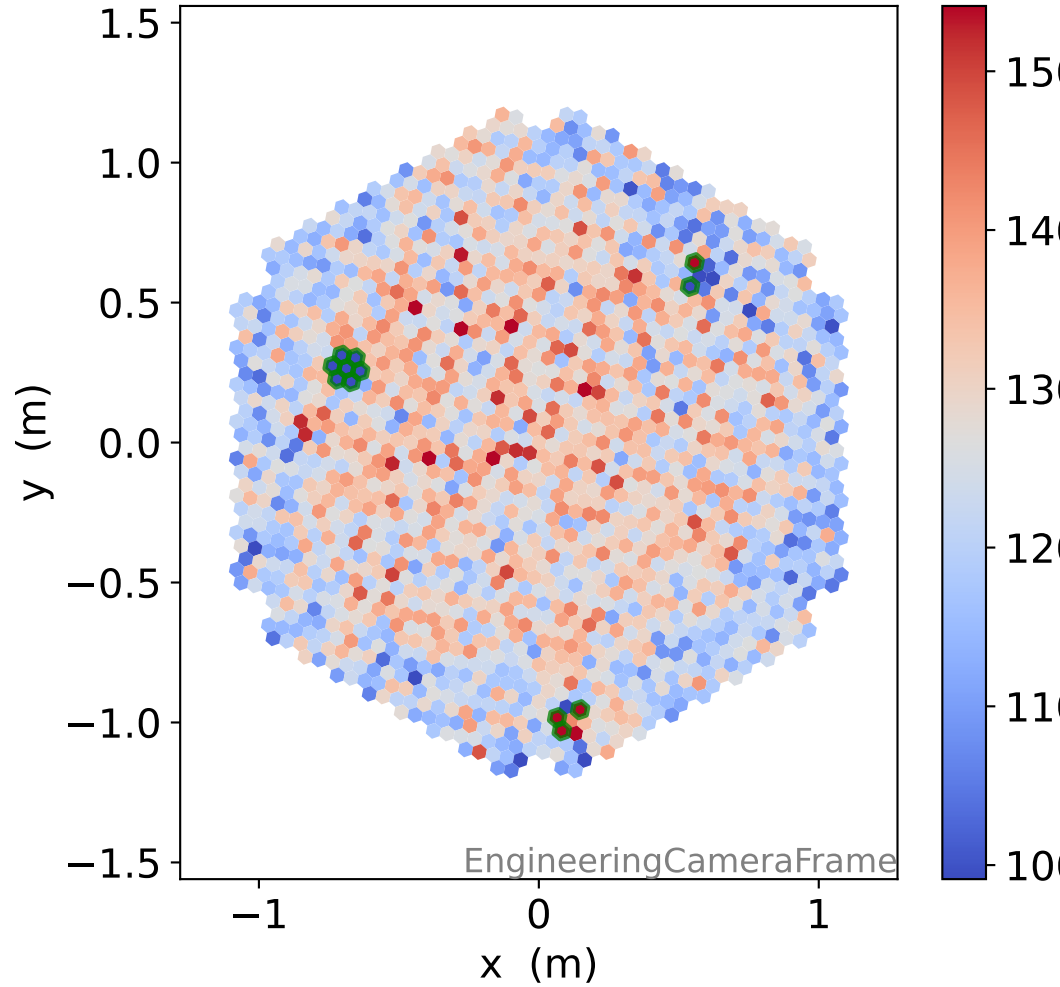
### LG relative signal



### HG photon-electrons

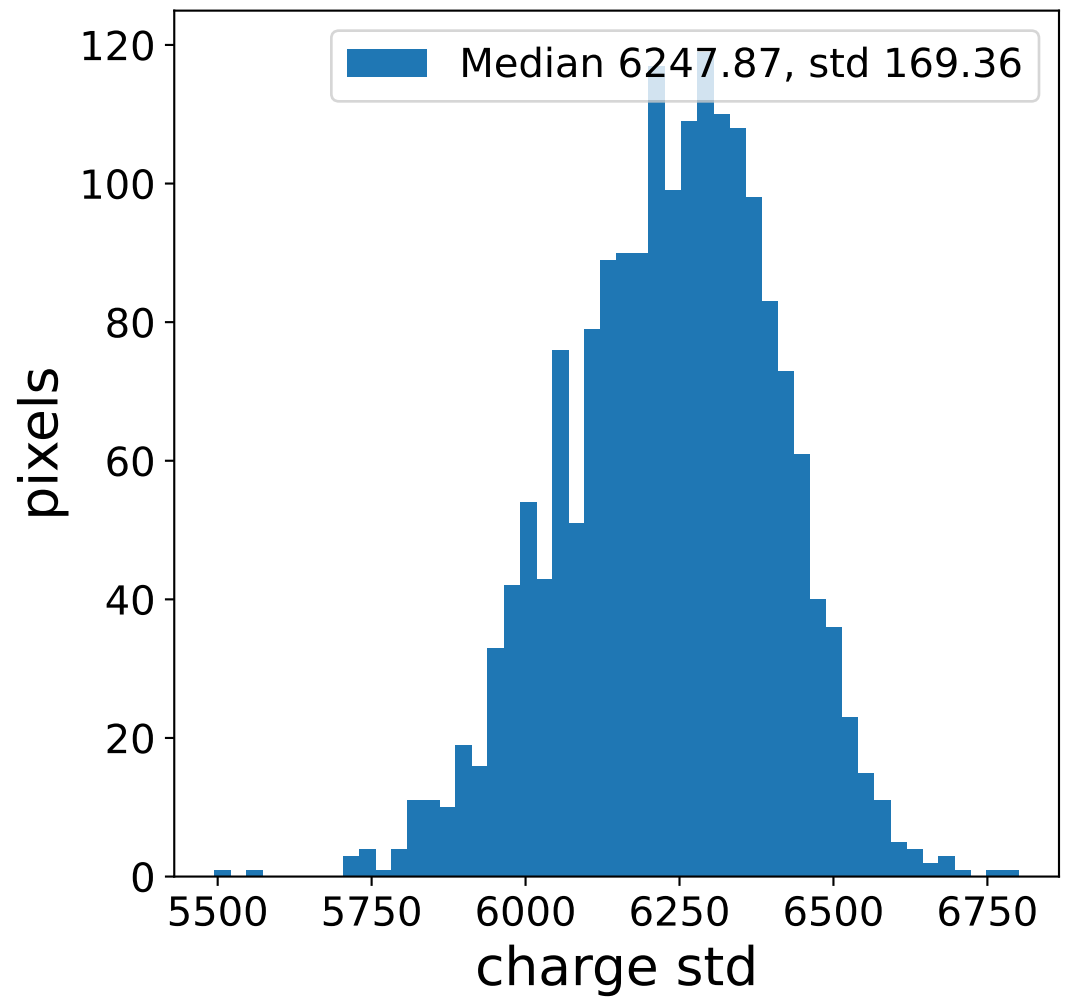
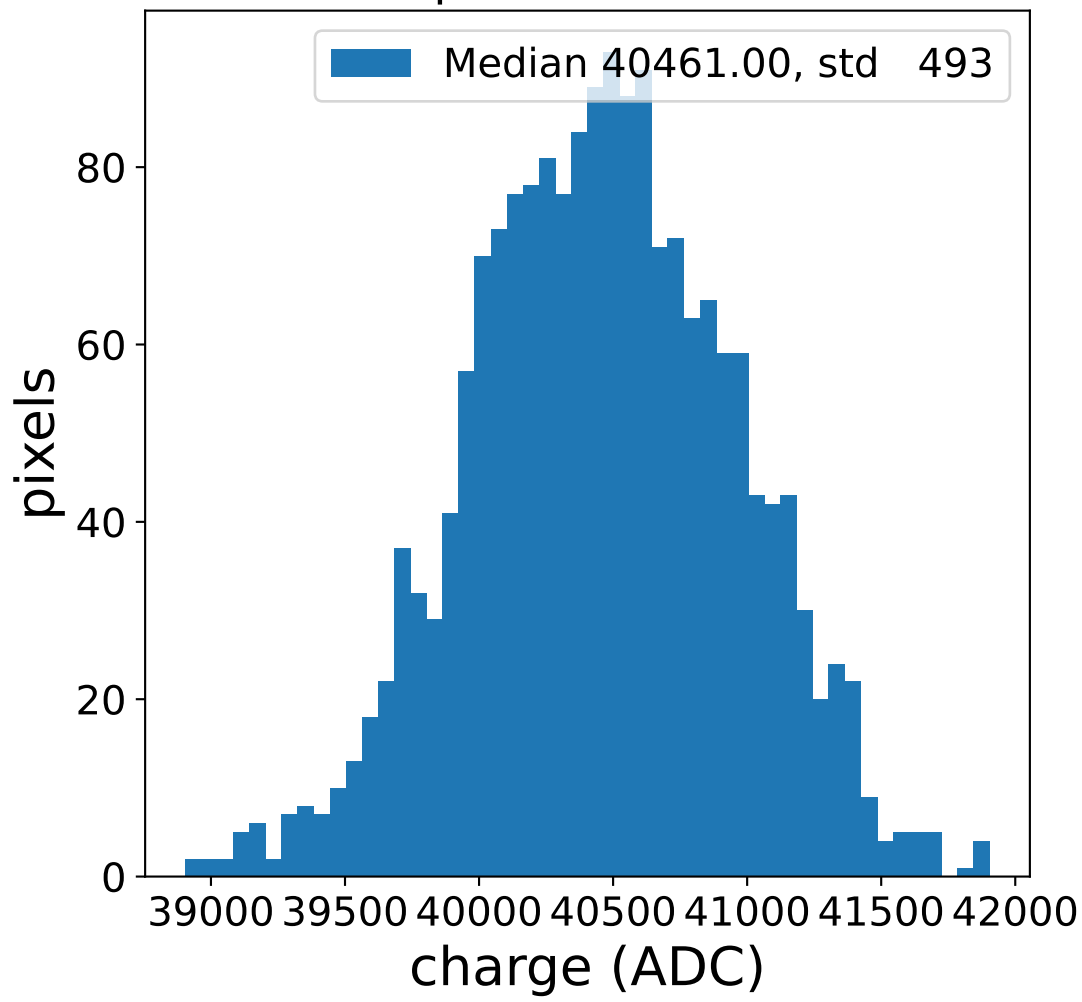


### LG photon-electrons

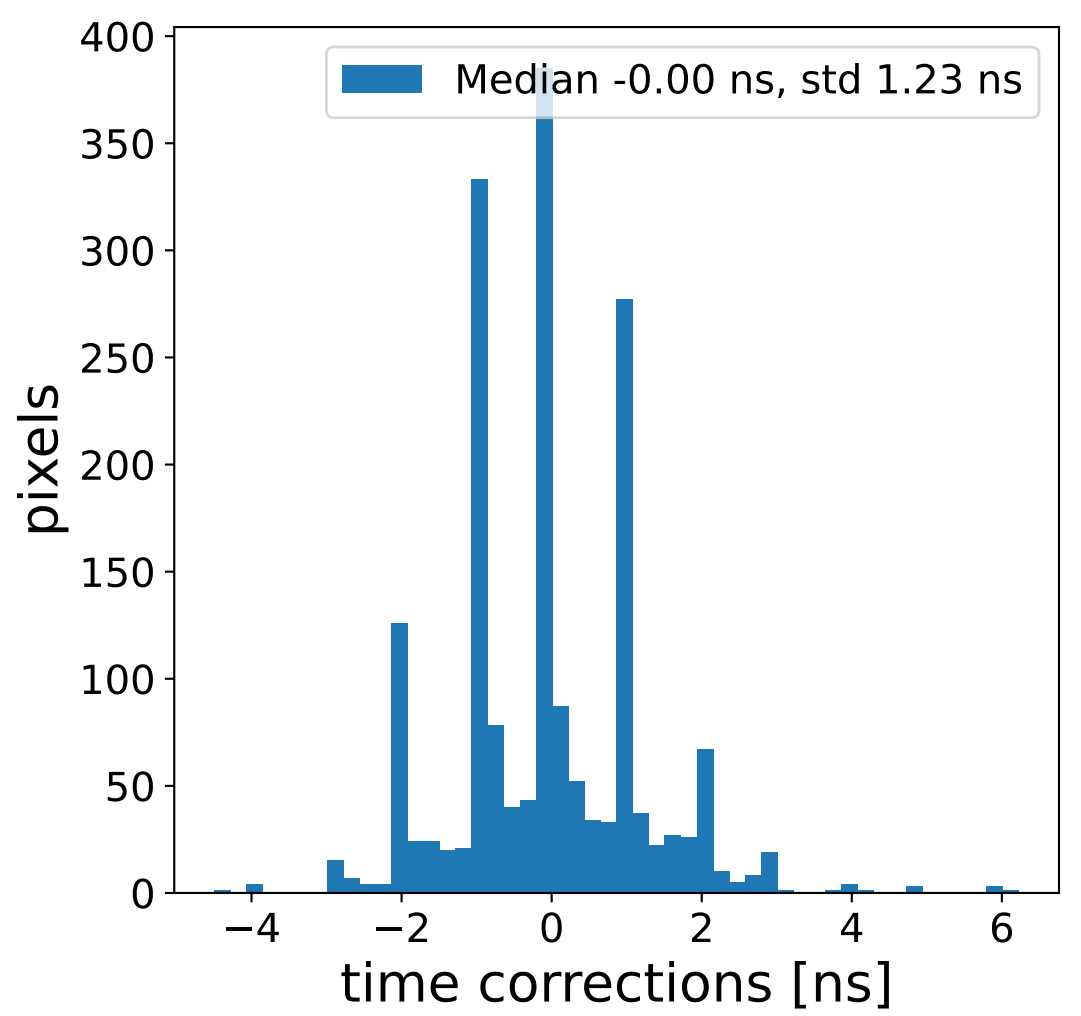
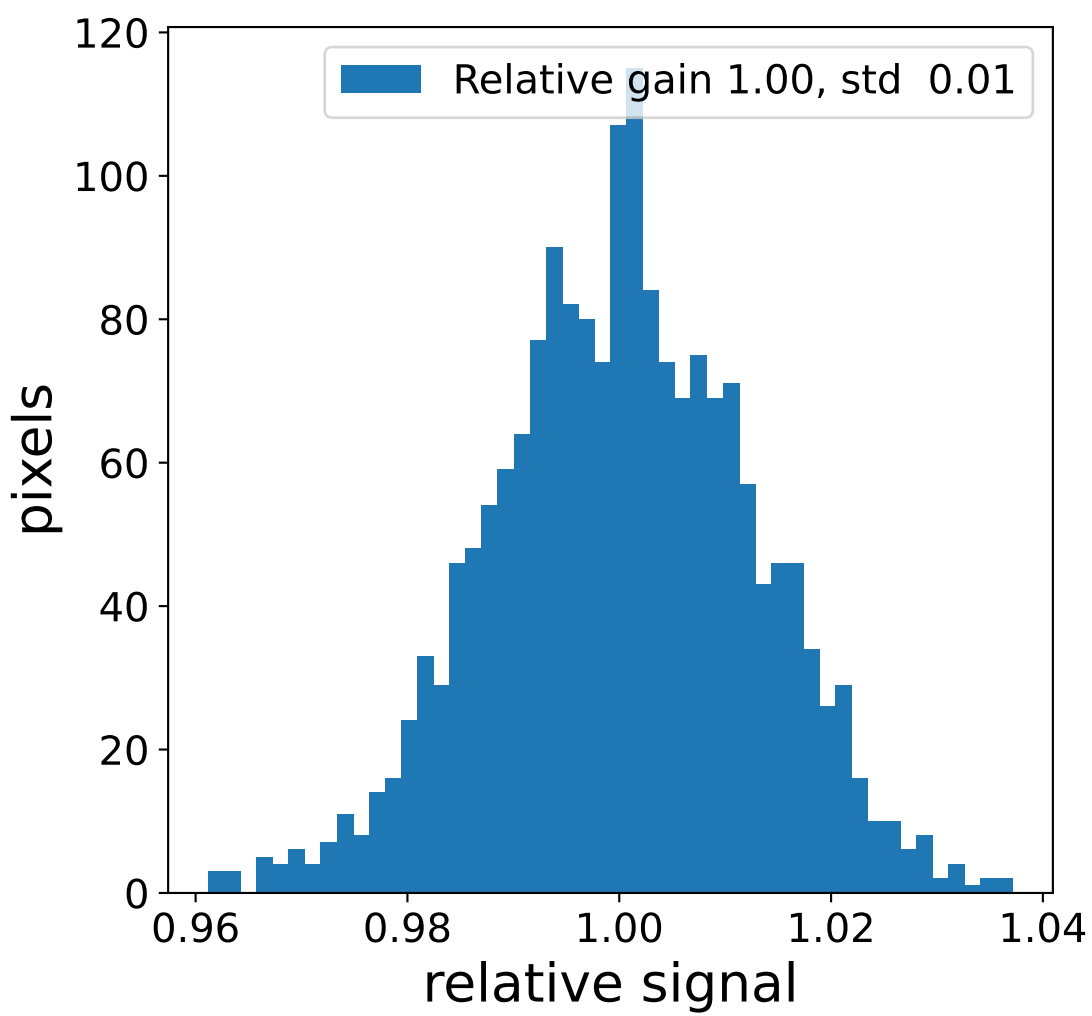
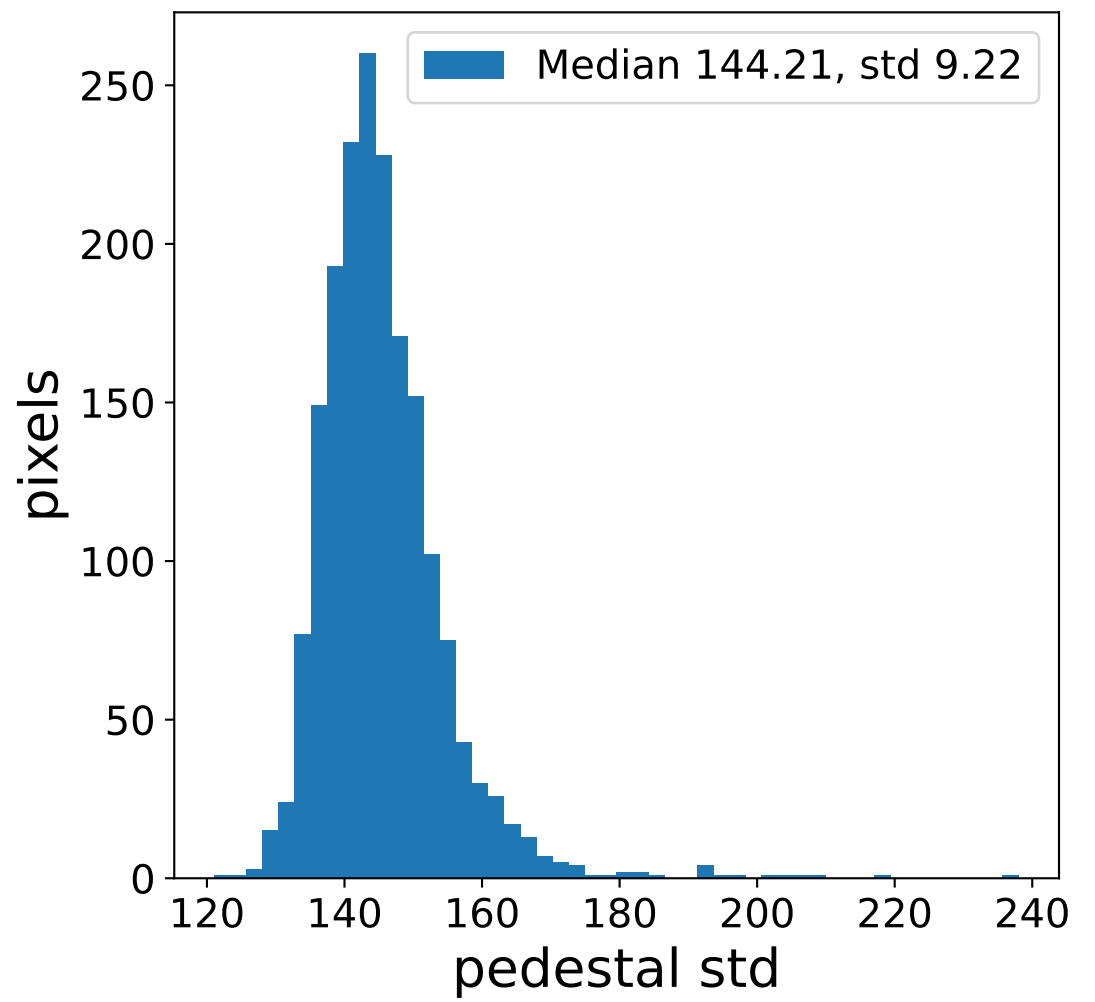
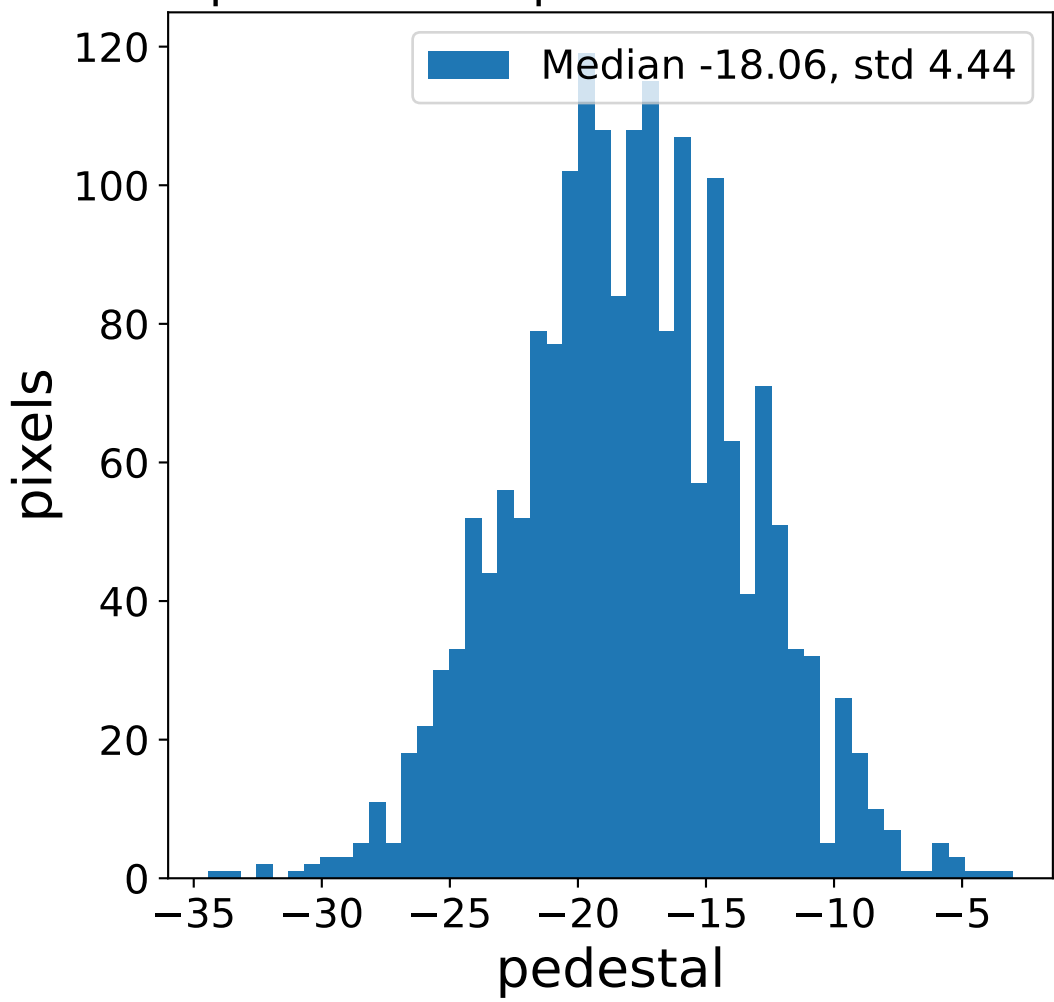


# Run 7498 channel: HG

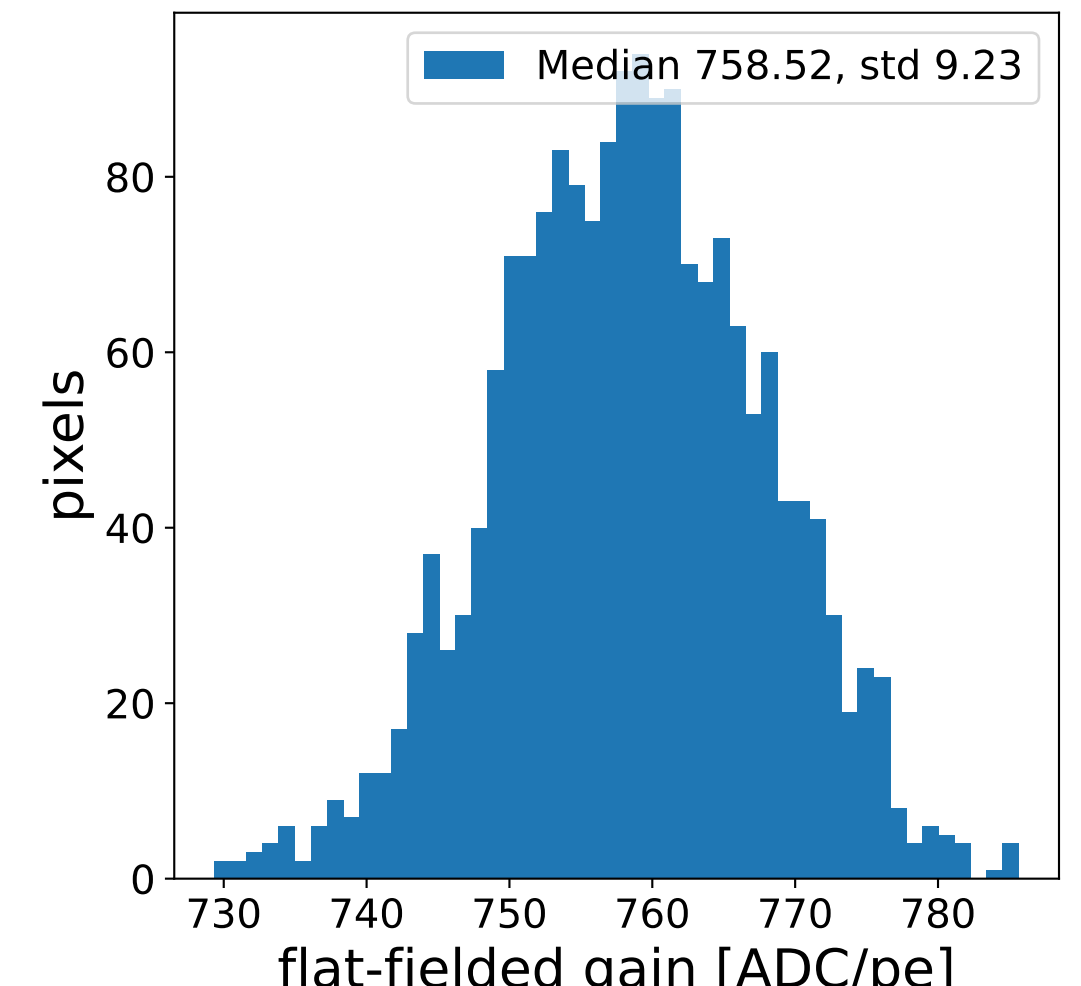
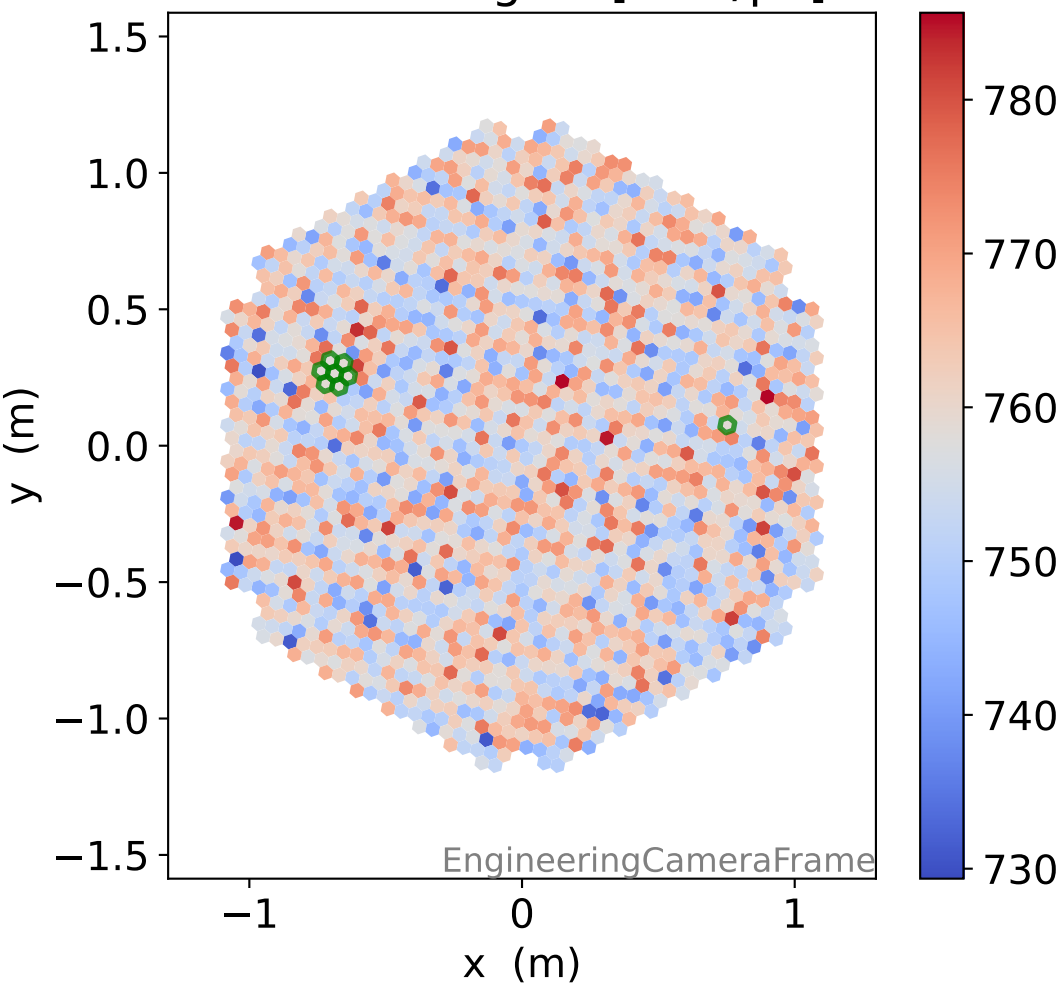
## FF sample of 10000 events



## pedestal sample of 10000 events

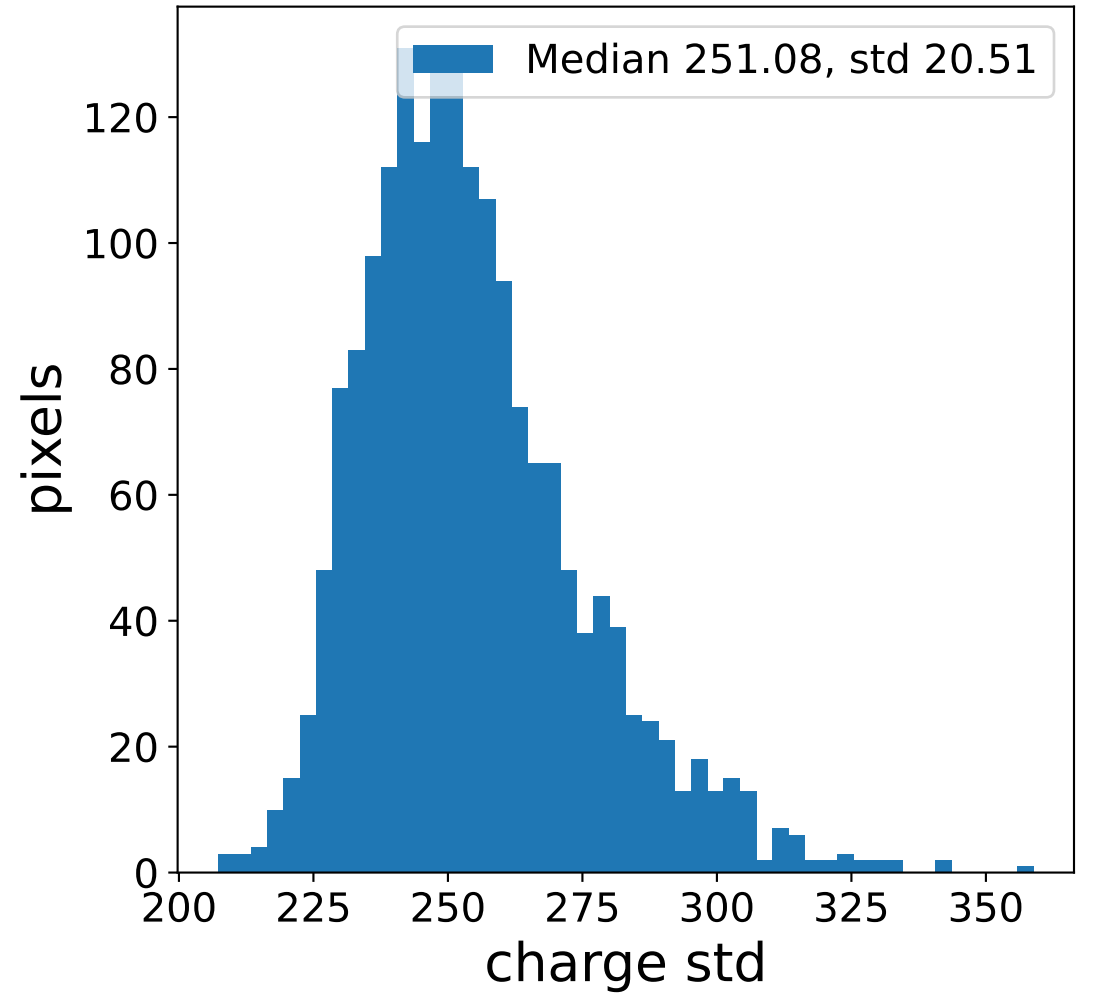
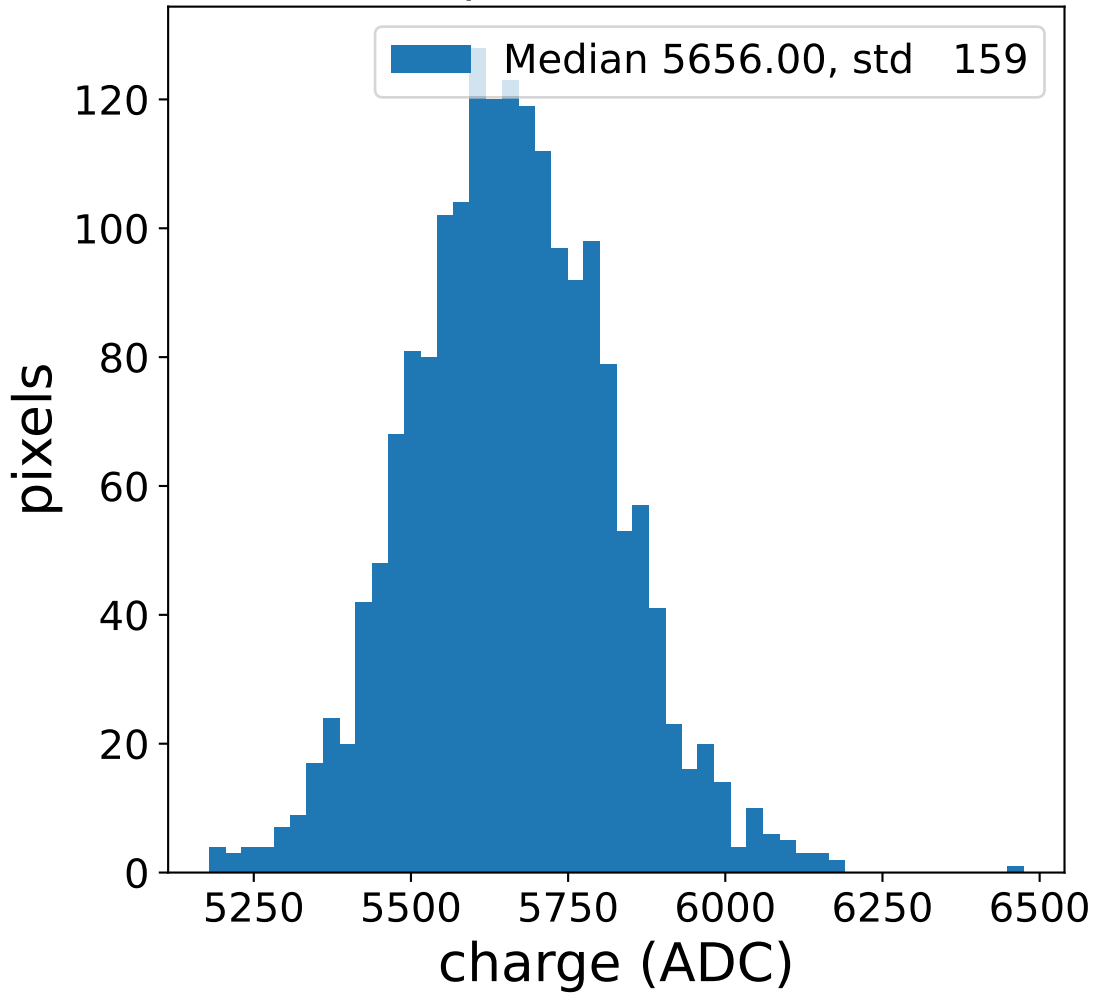


## flat-fielded gain [ADC/pe]

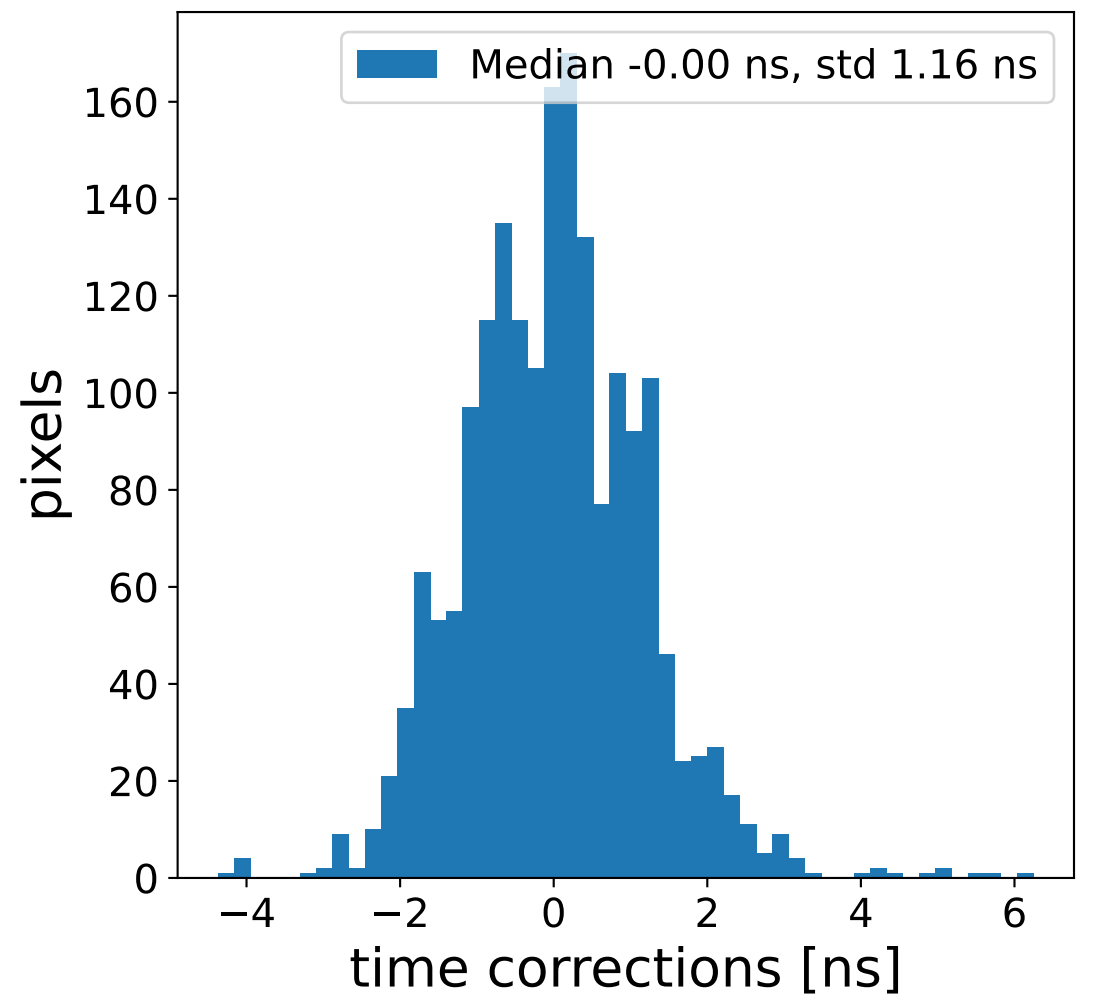
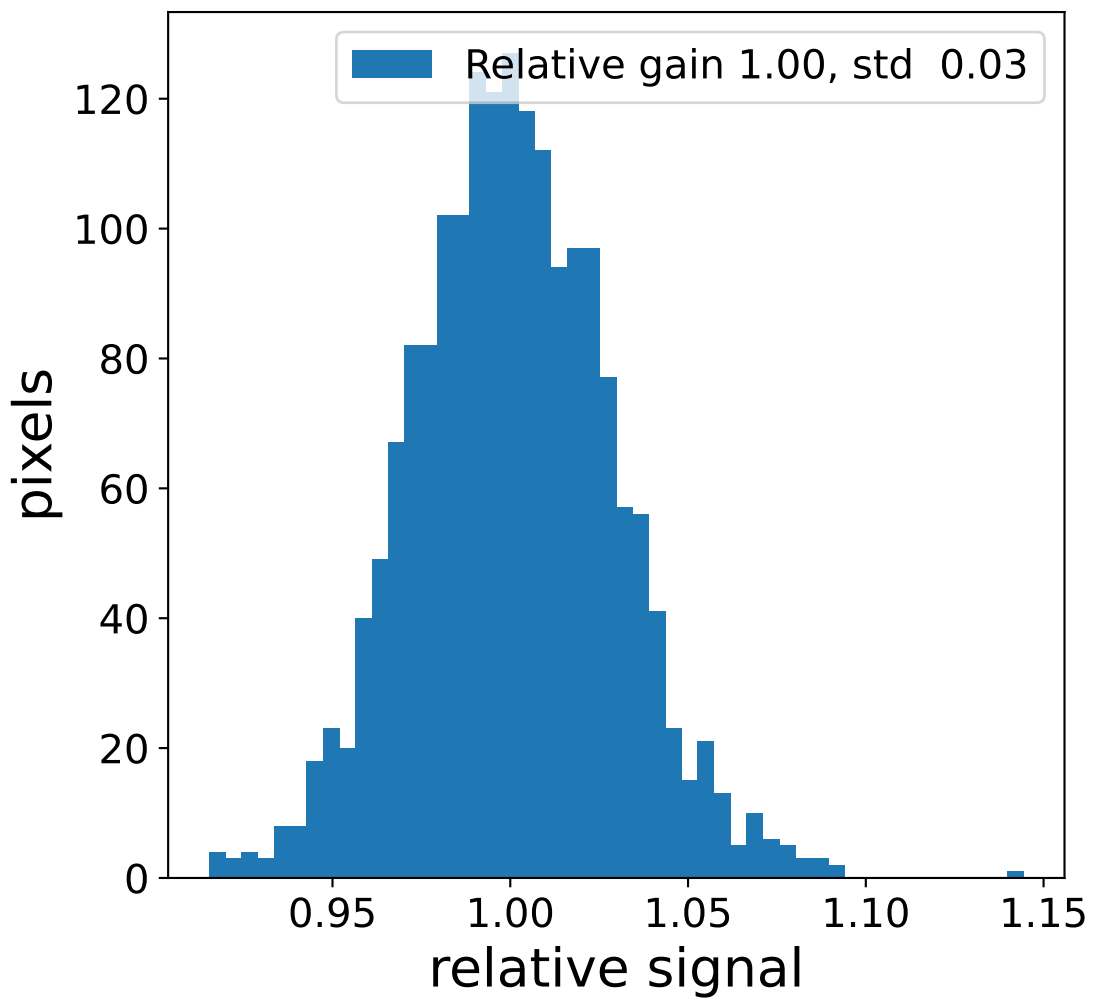
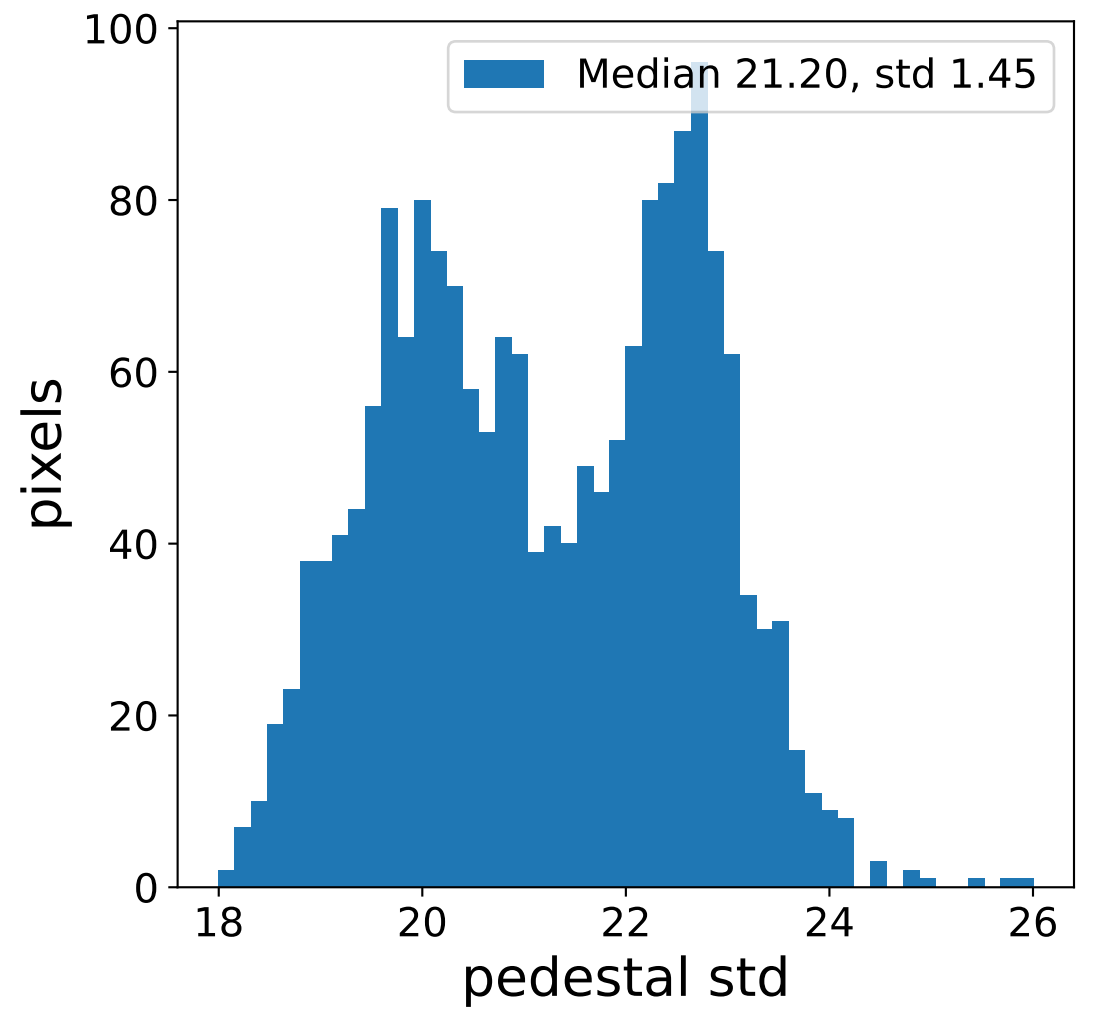
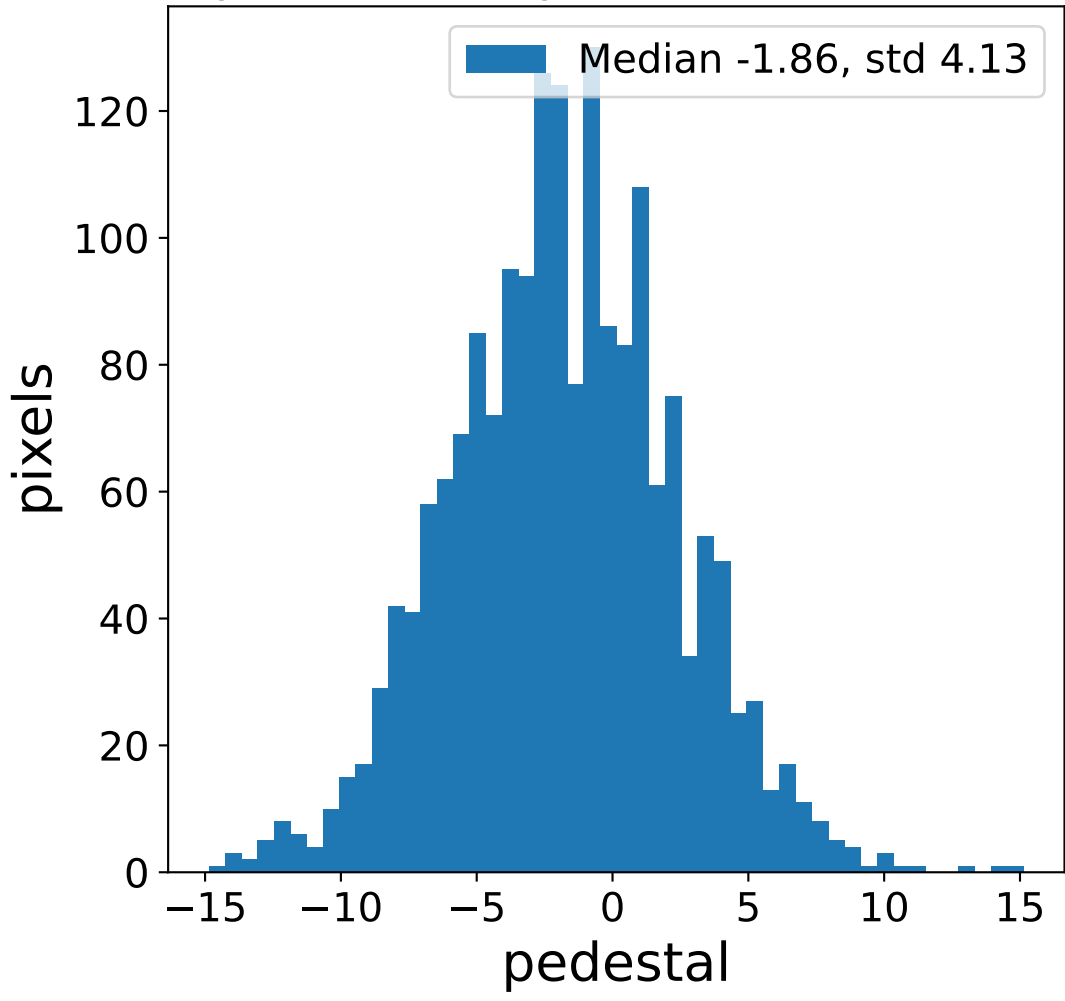


# Run 7498 channel: LG

### FF sample of 10000 events



### pedestal sample of 10000 events



### flat-fielded gain [ADC/pe]

