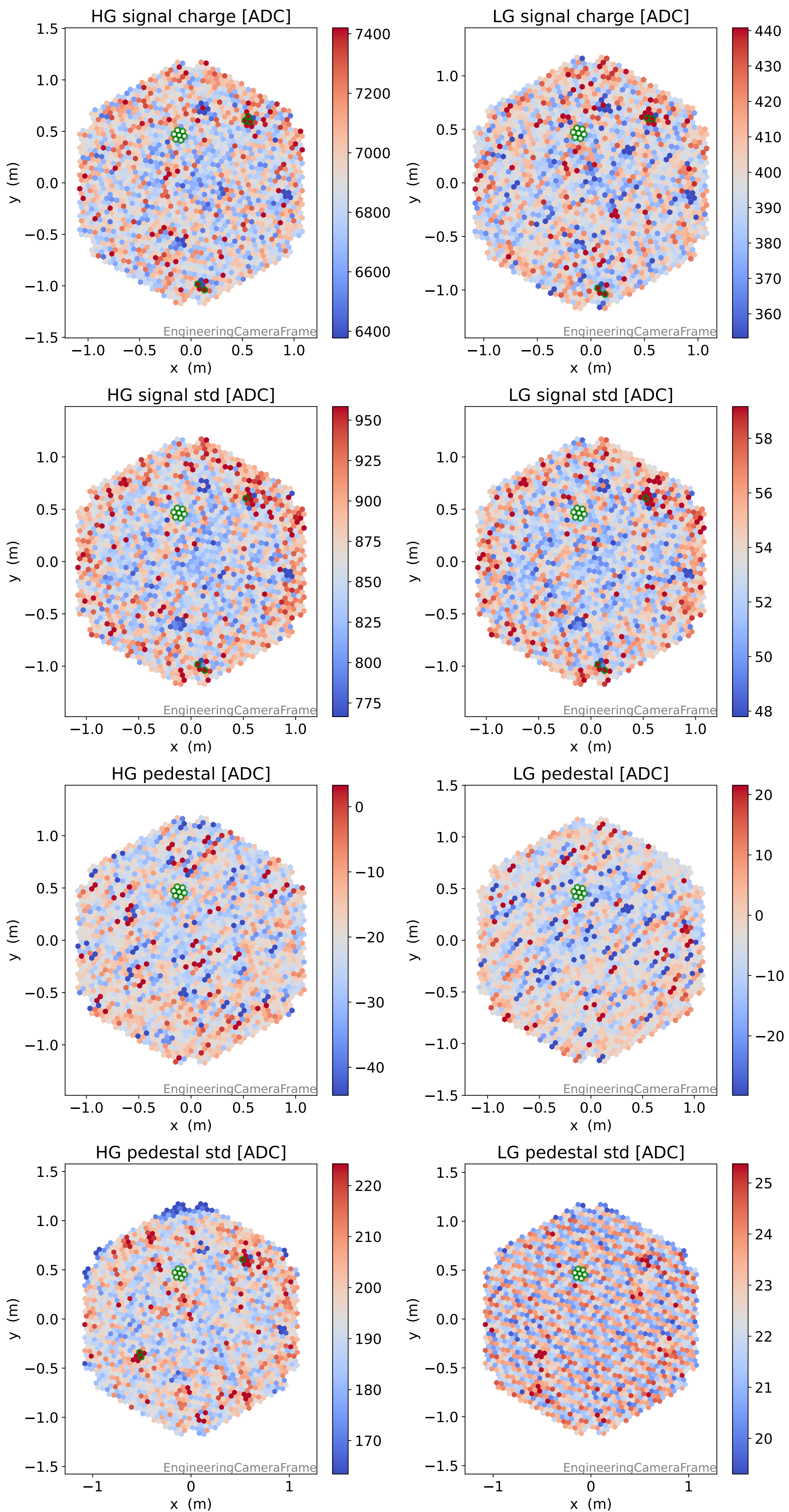
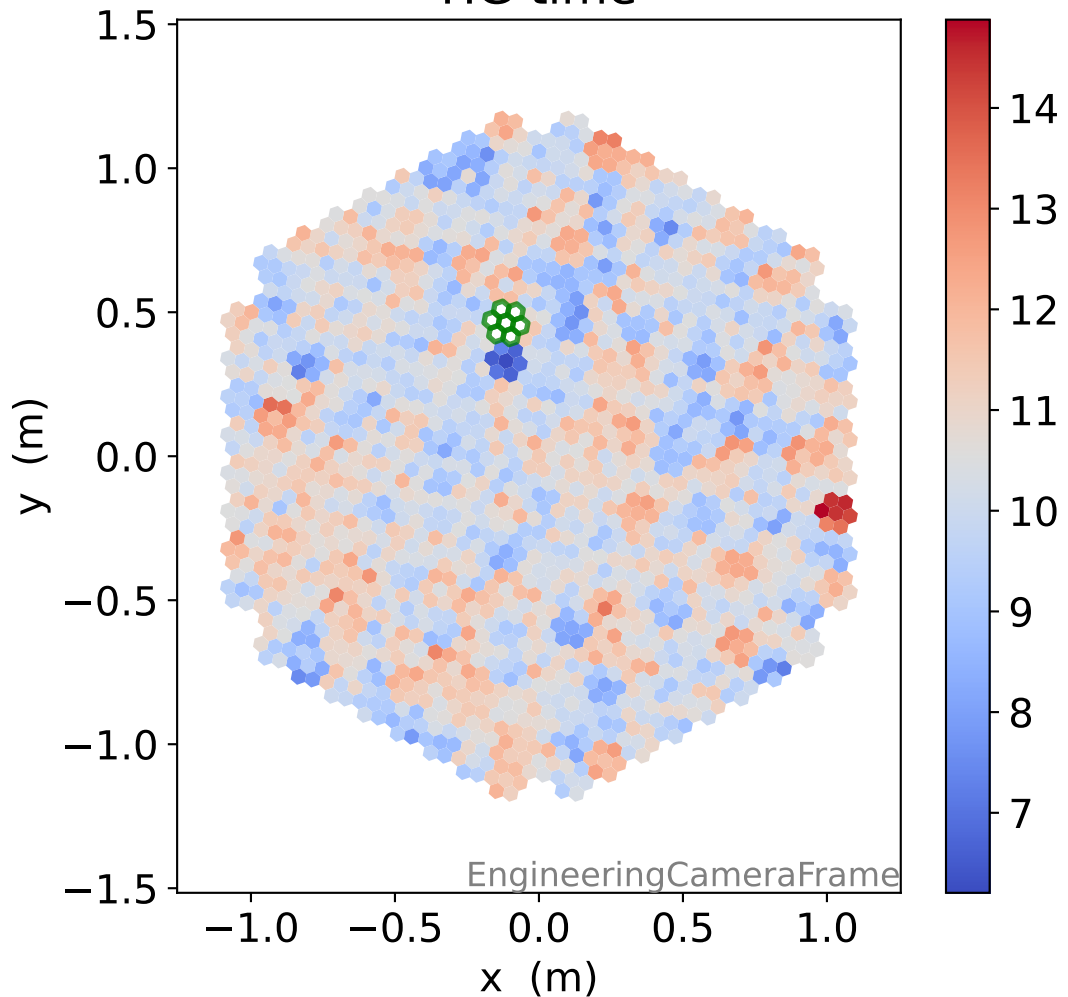


Run 7076, Cat-A calibration

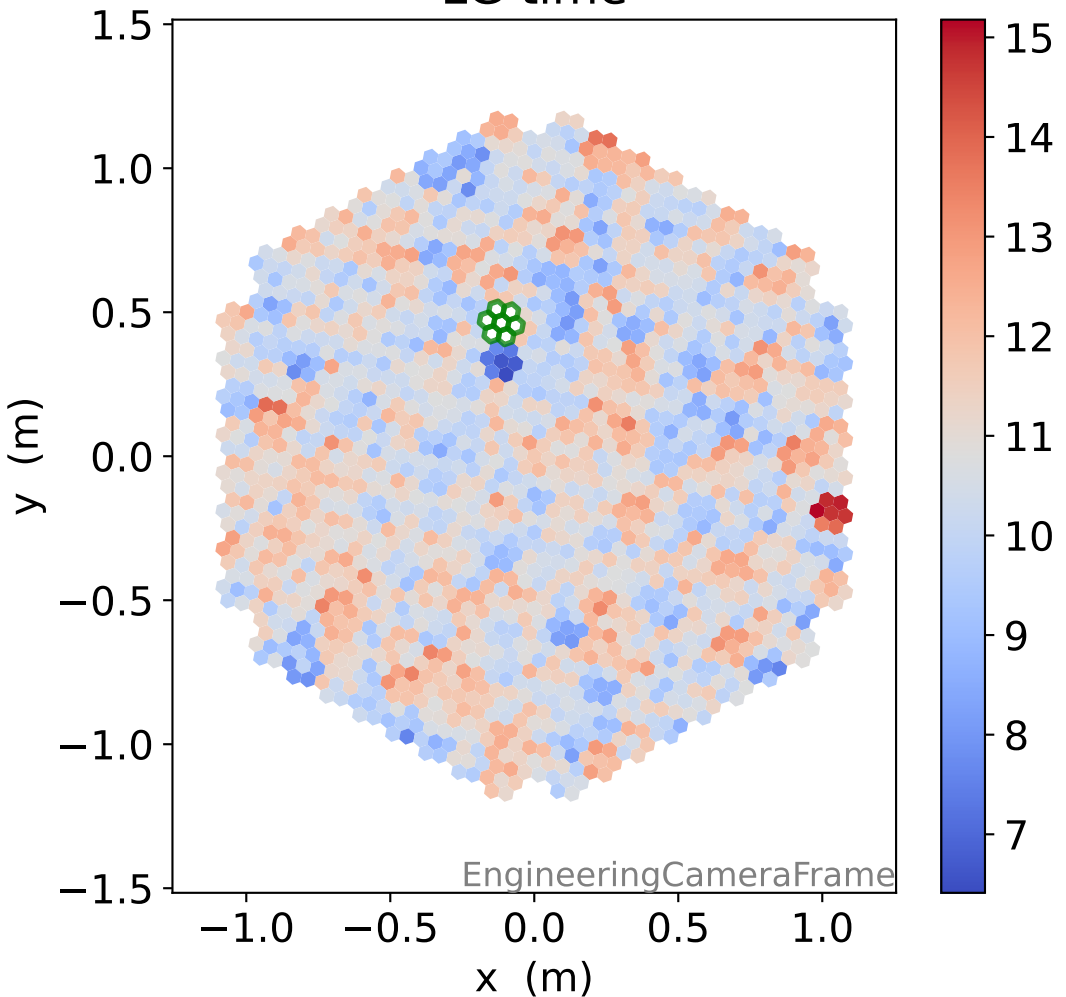


Run 7076

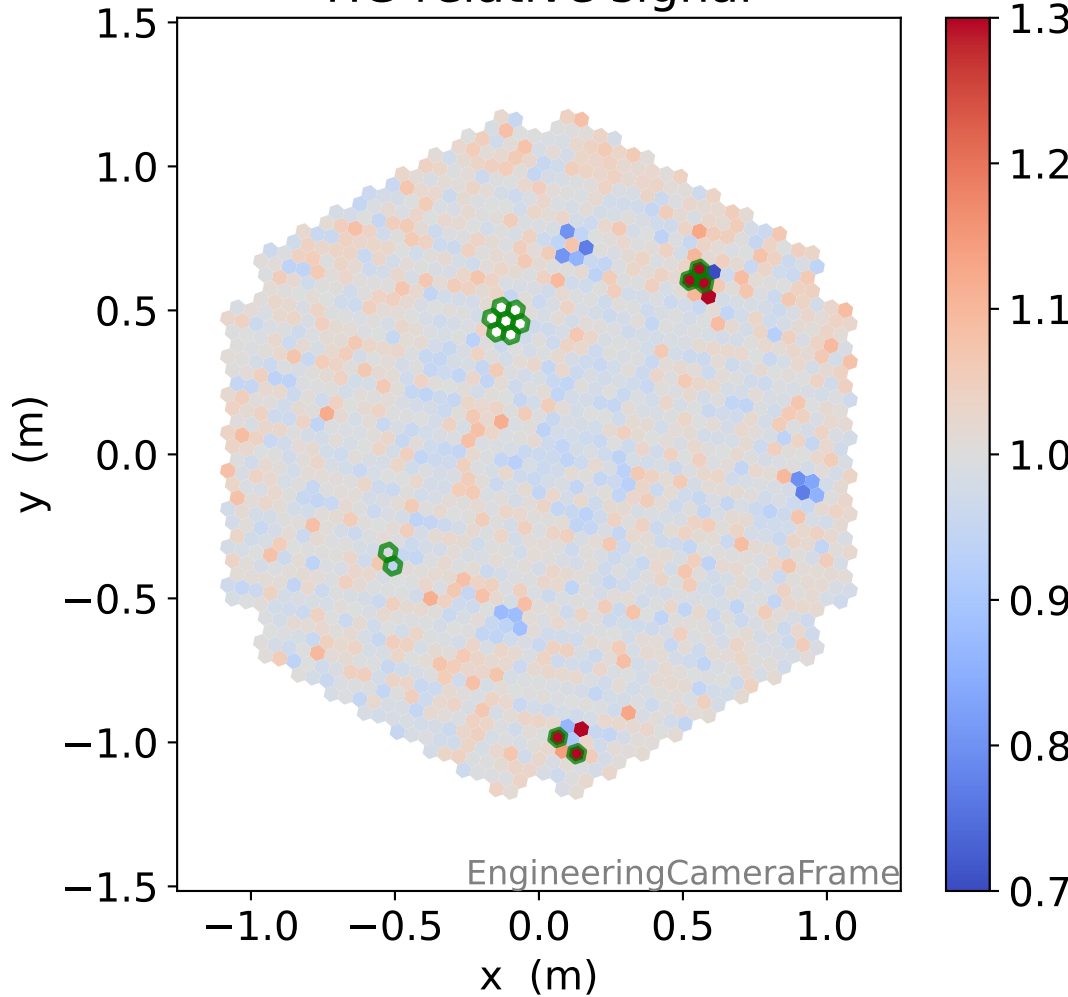
HG time



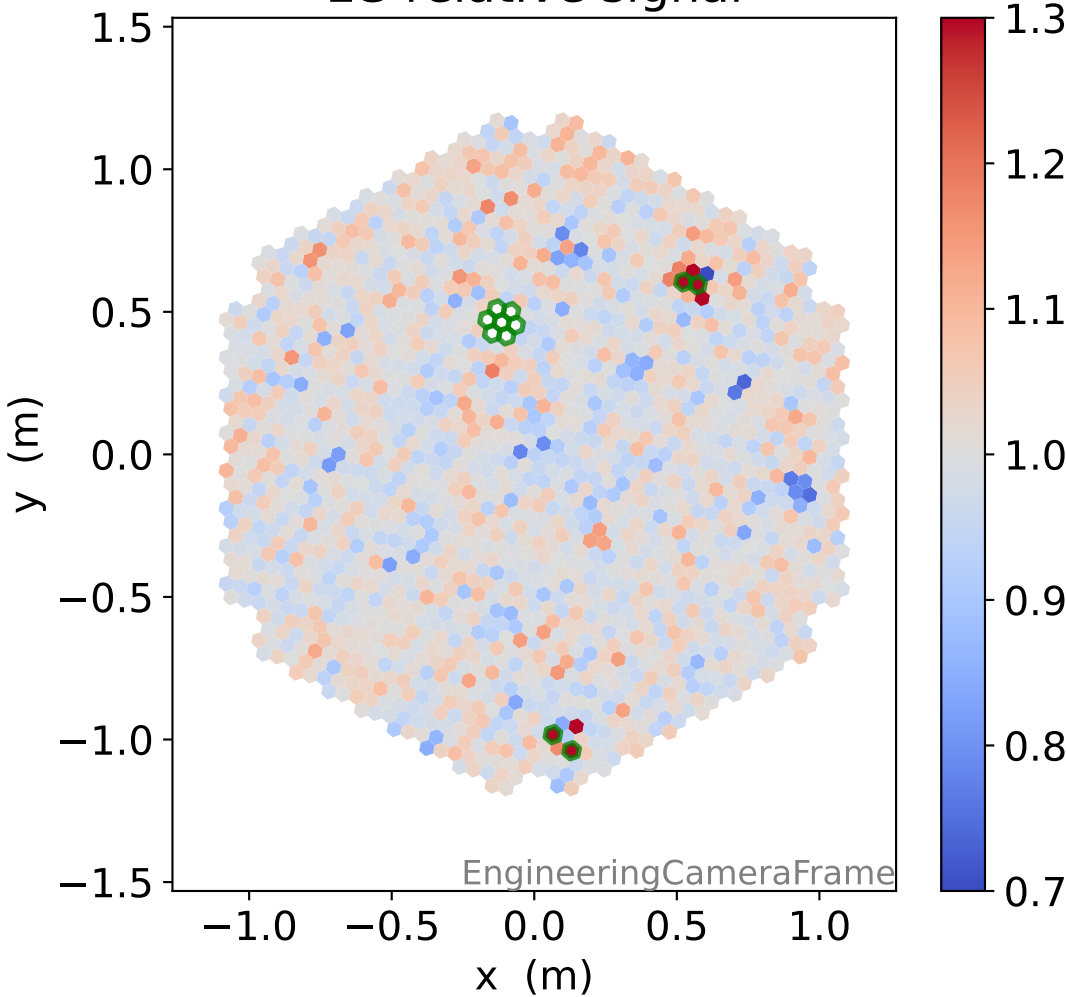
LG time



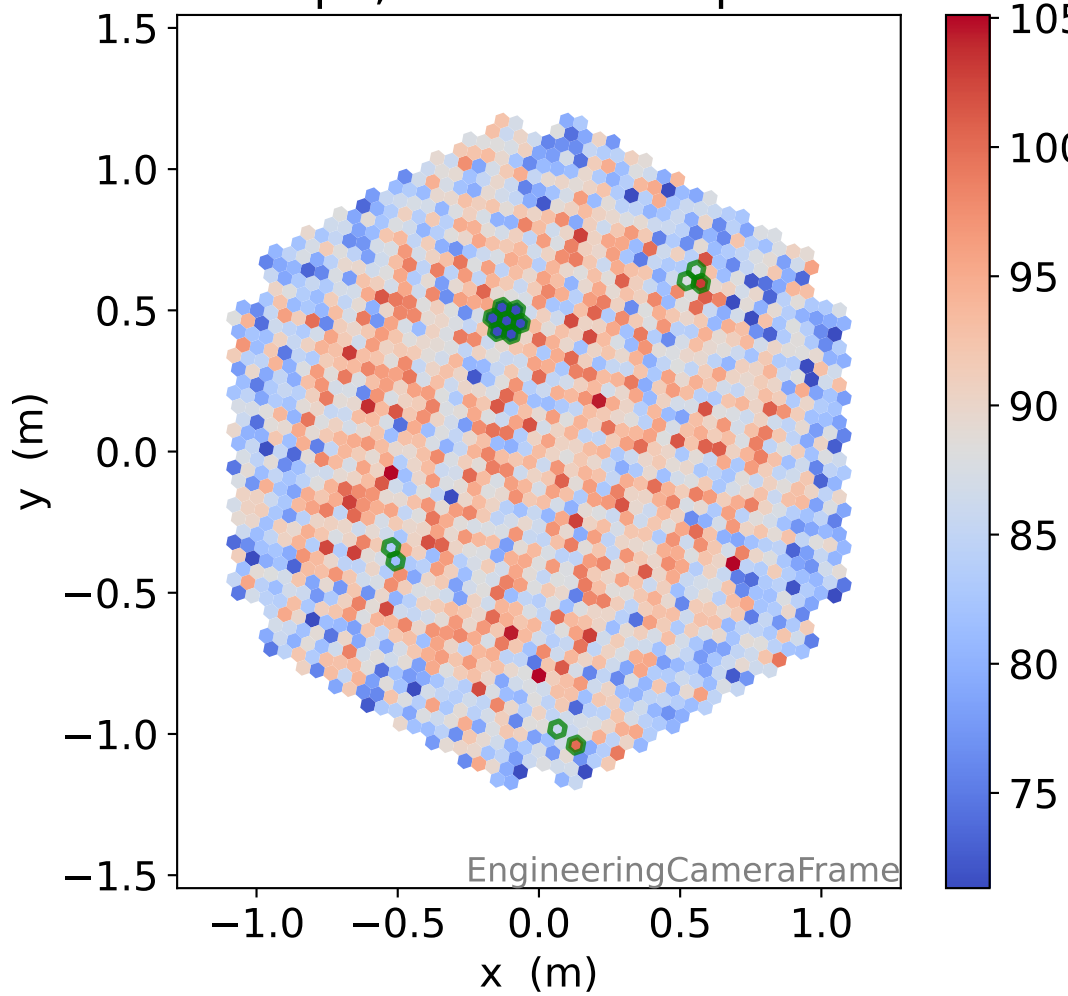
HG relative signal



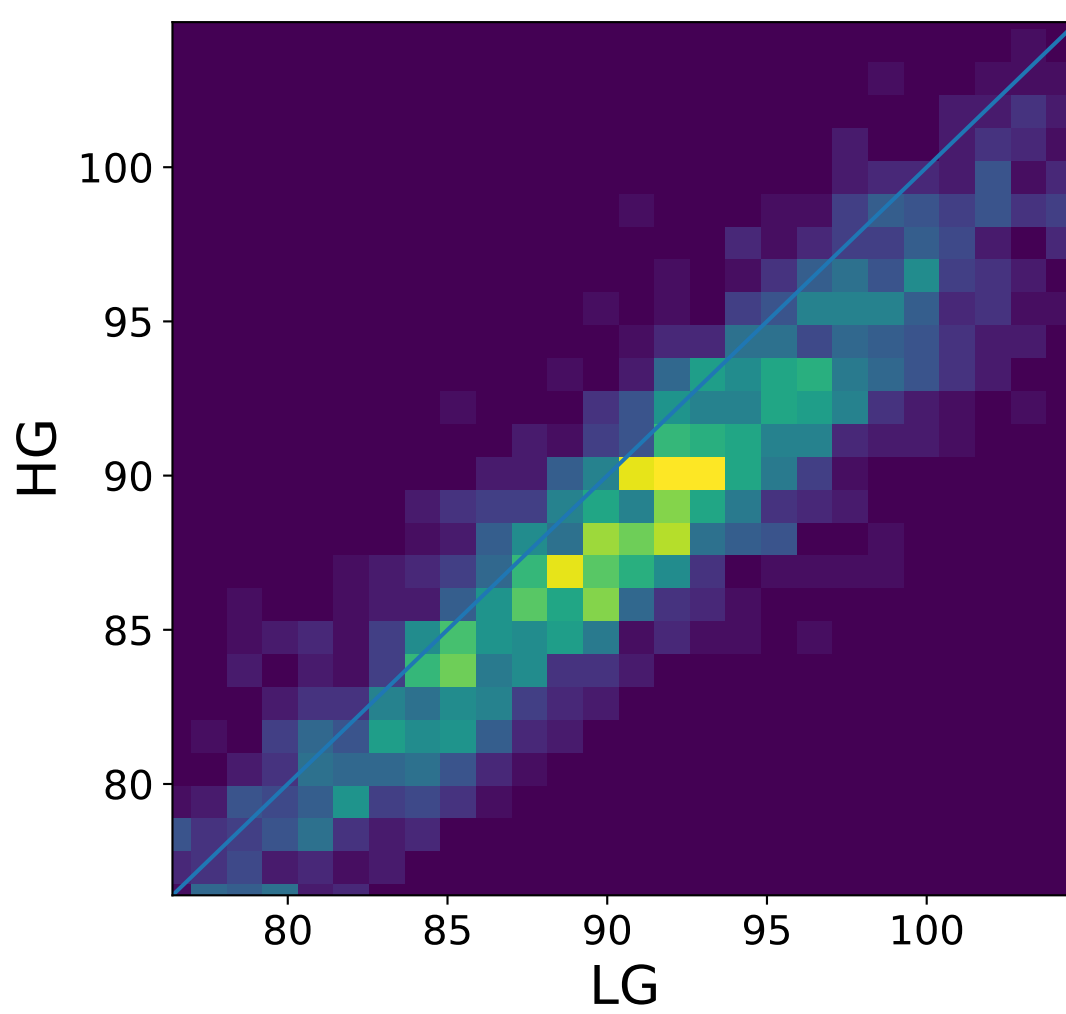
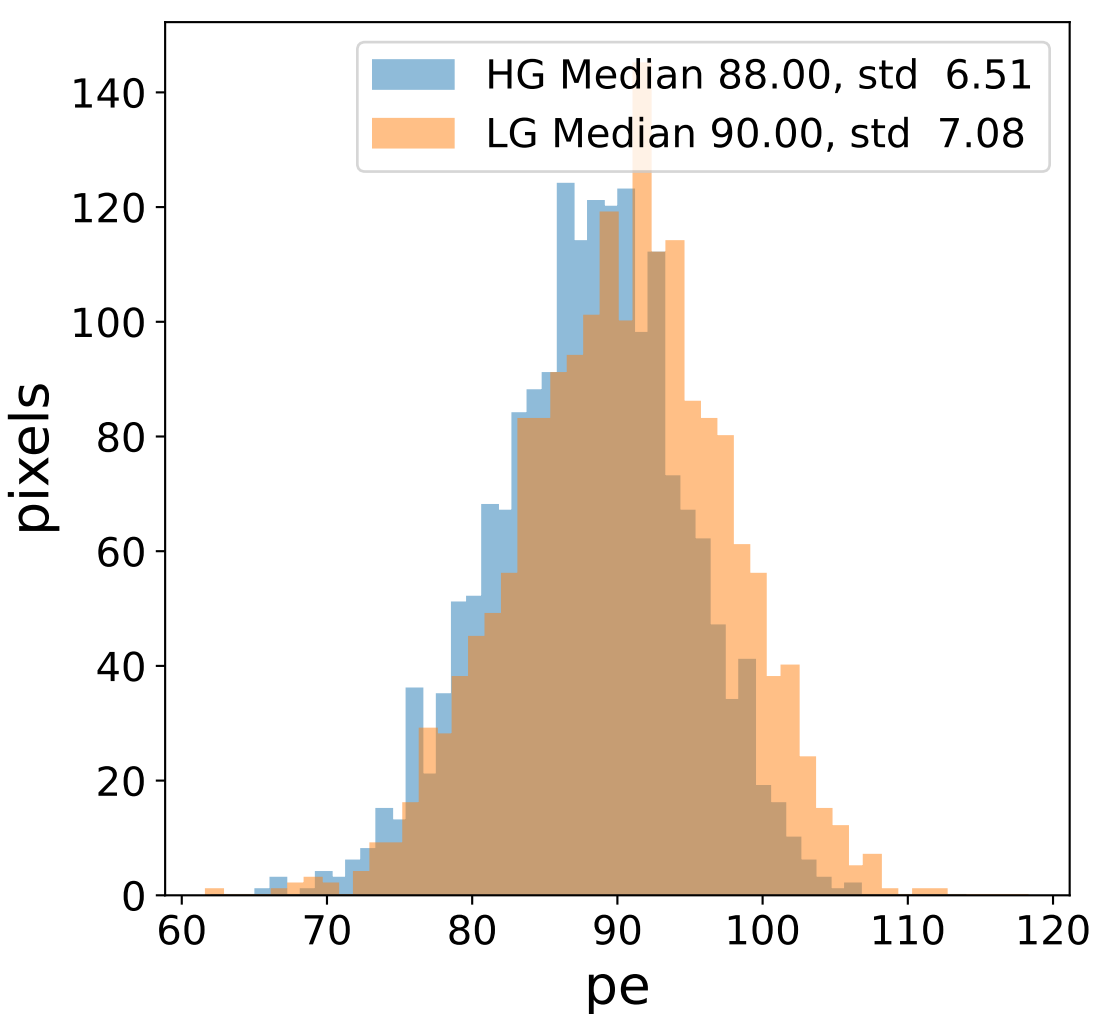
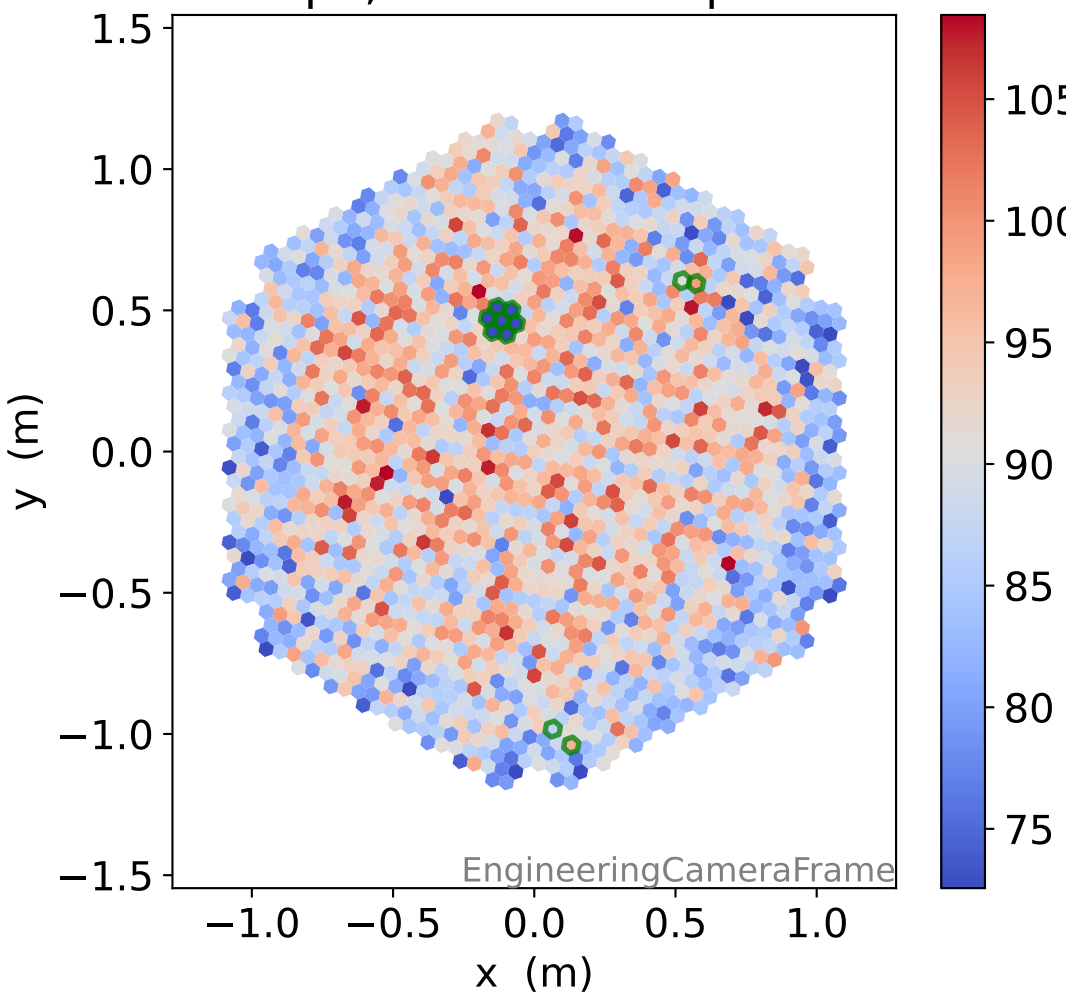
LG relative signal



HG pe, 14 unusable pixels

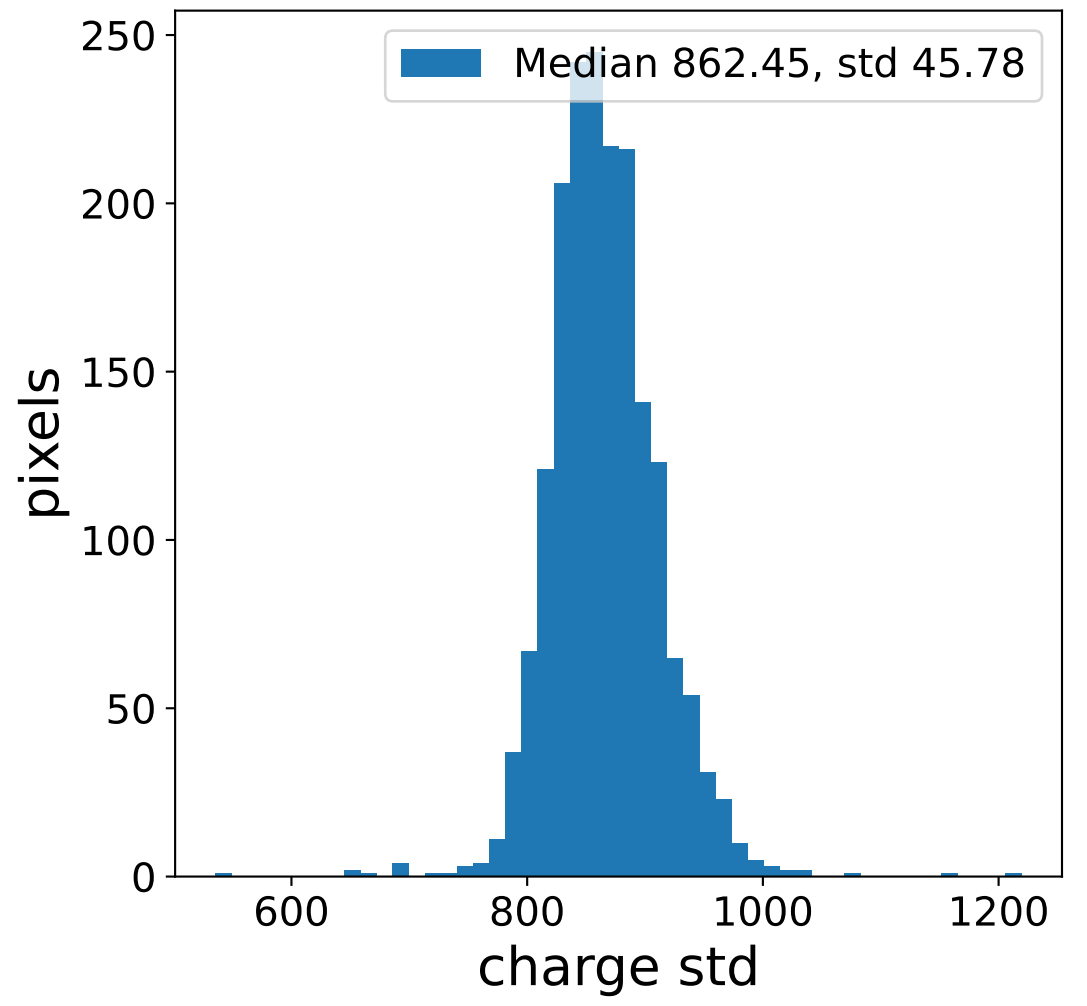
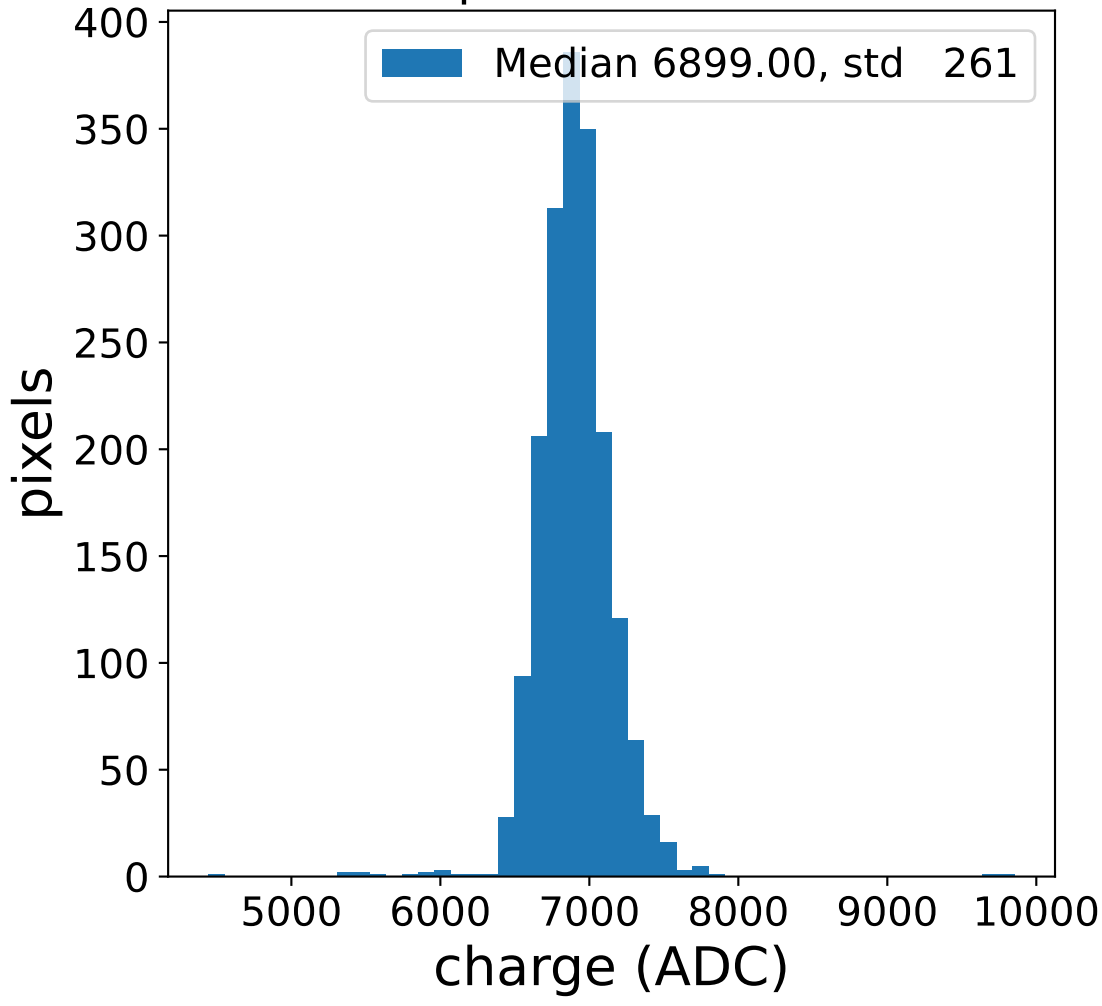


LG pe, 11 unusable pixels

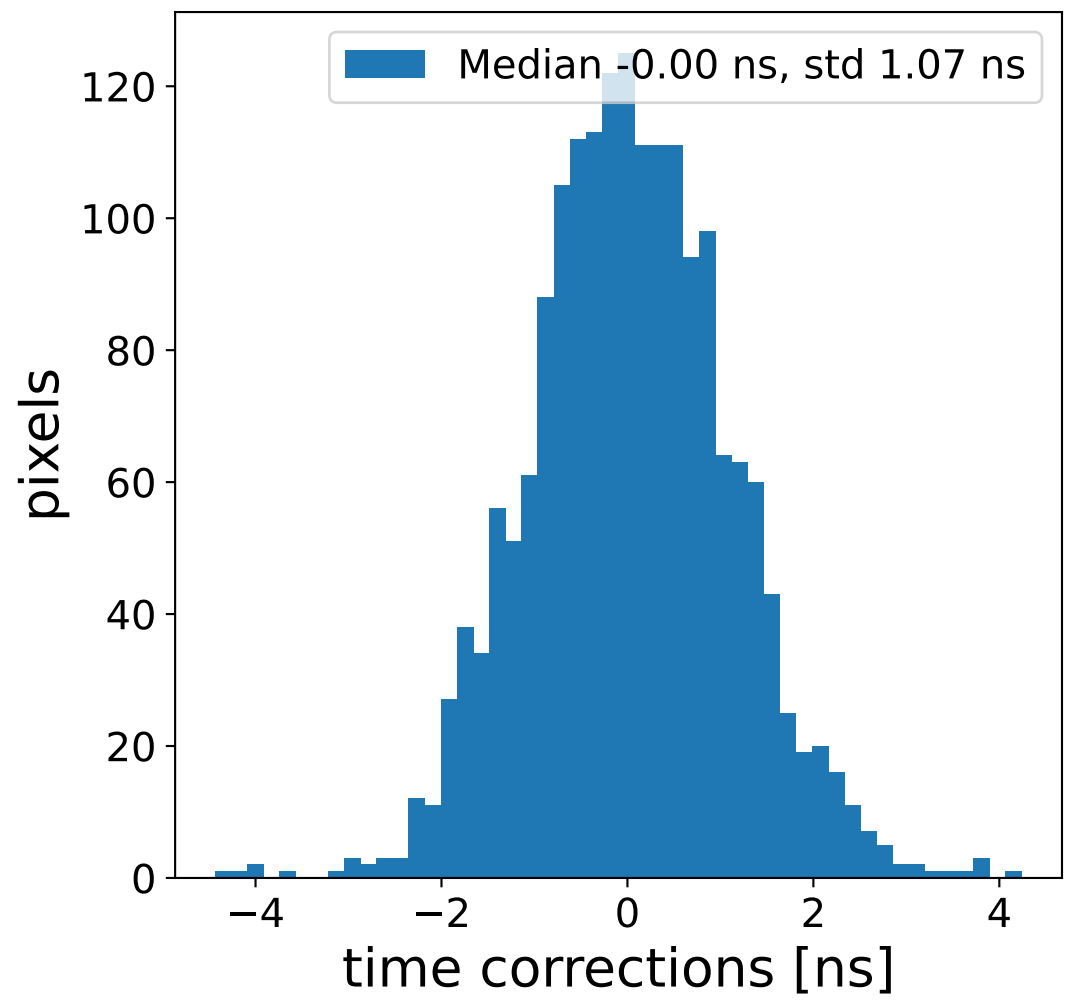
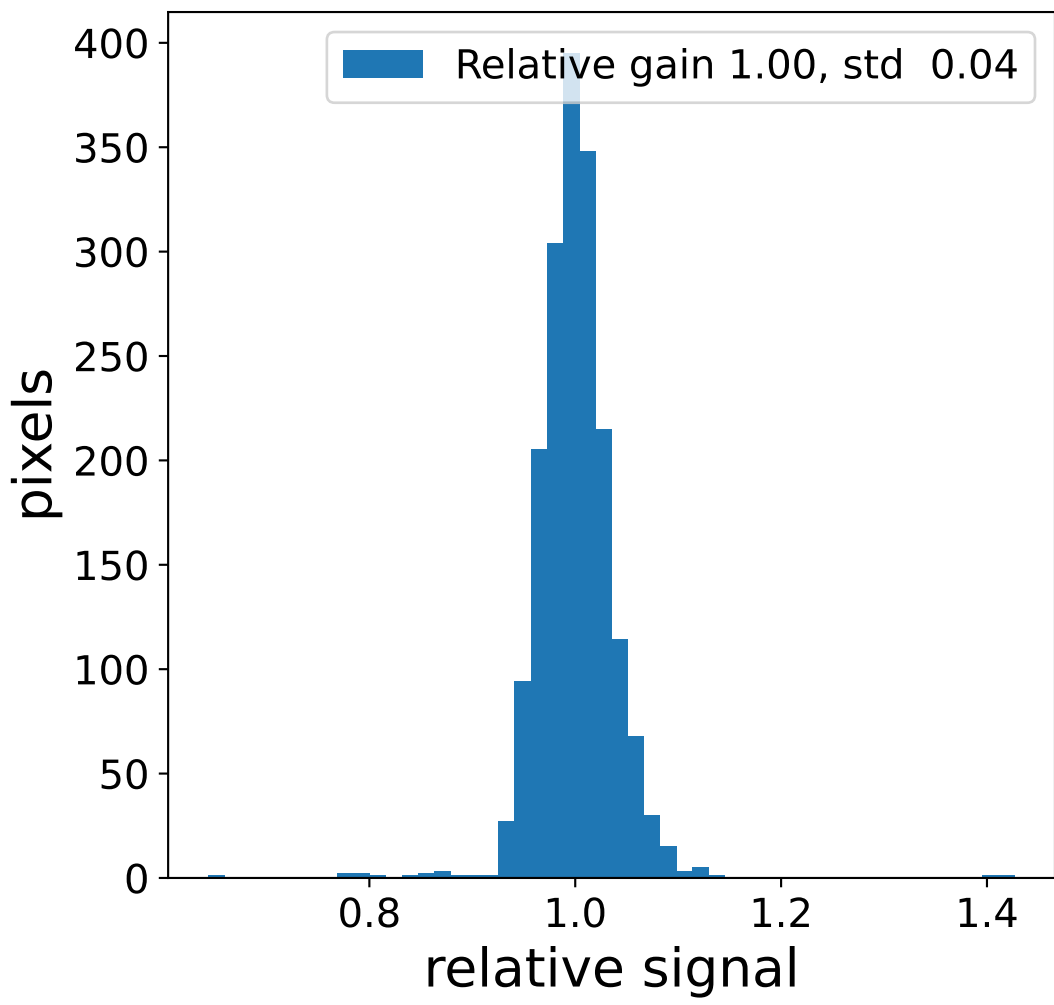
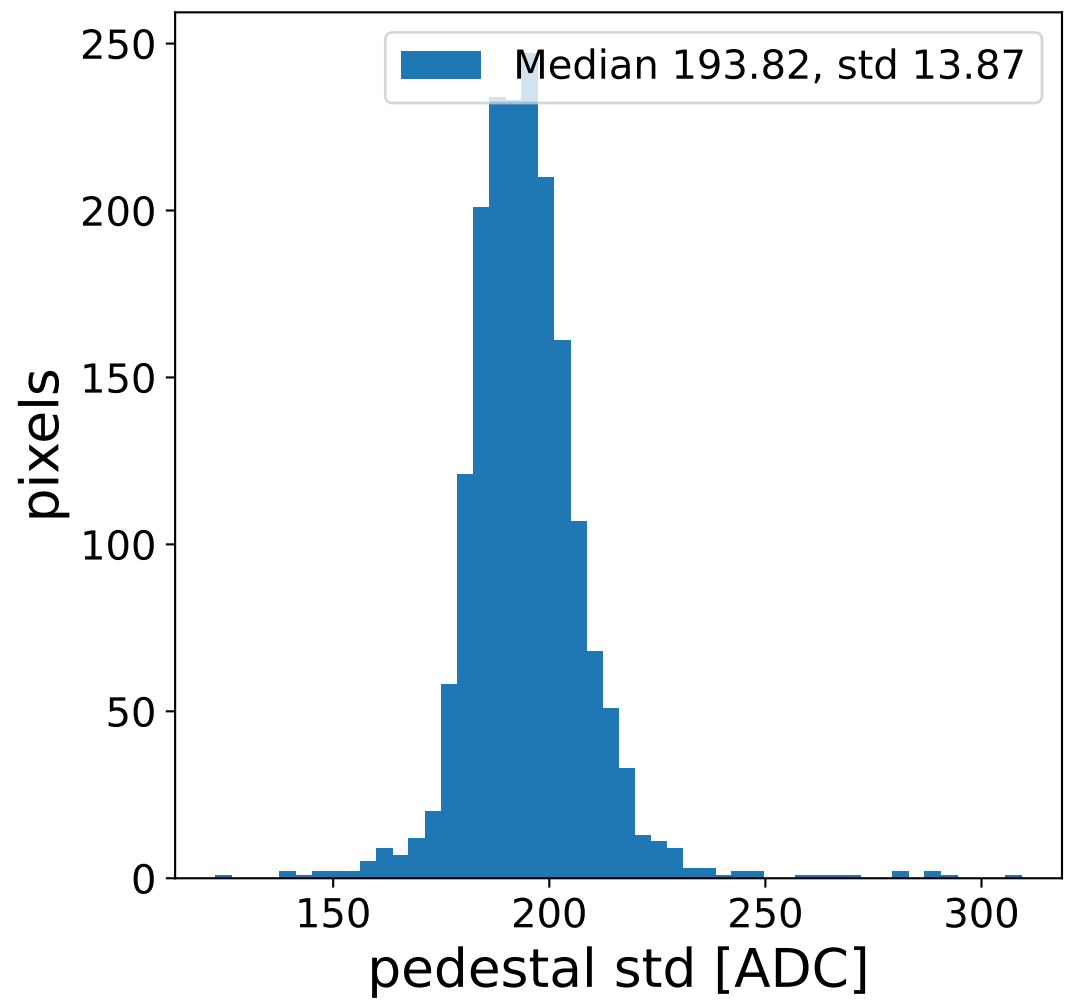
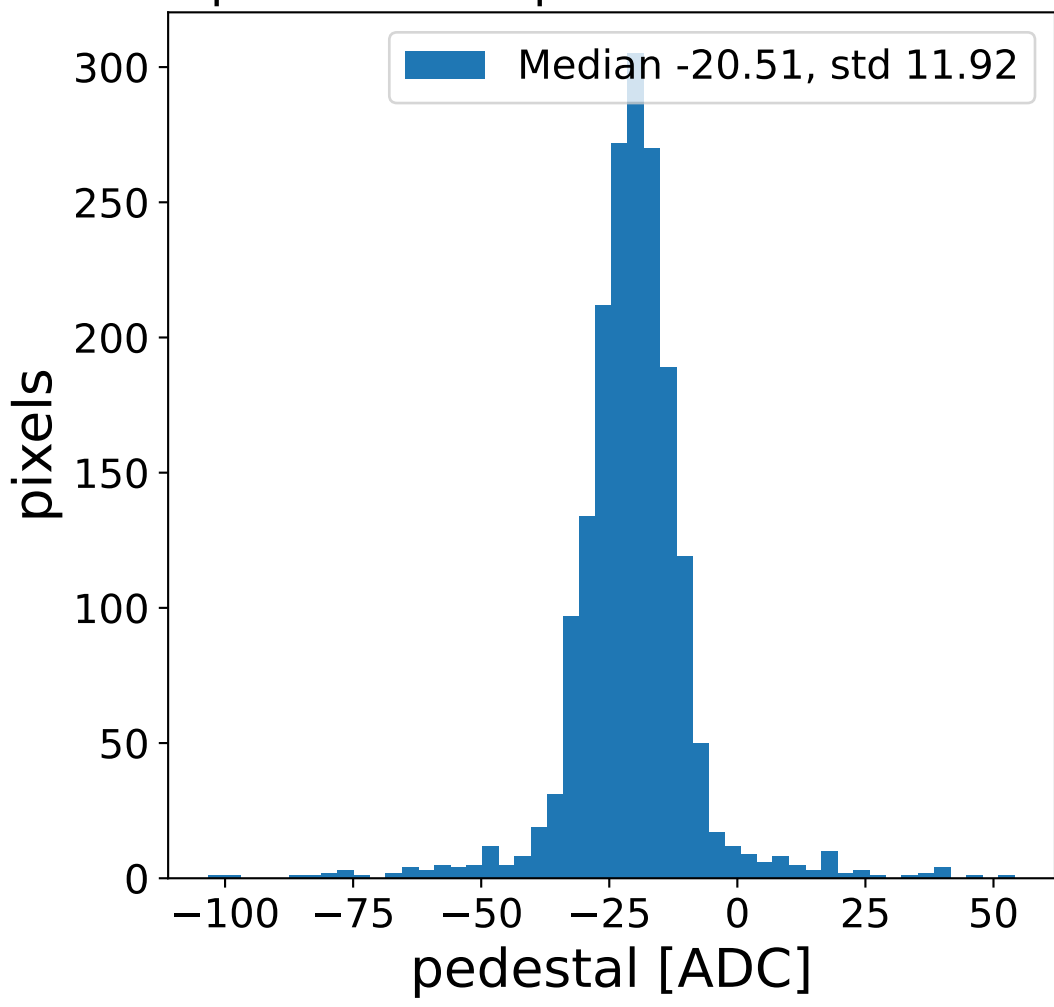


Run 7076 channel: HG

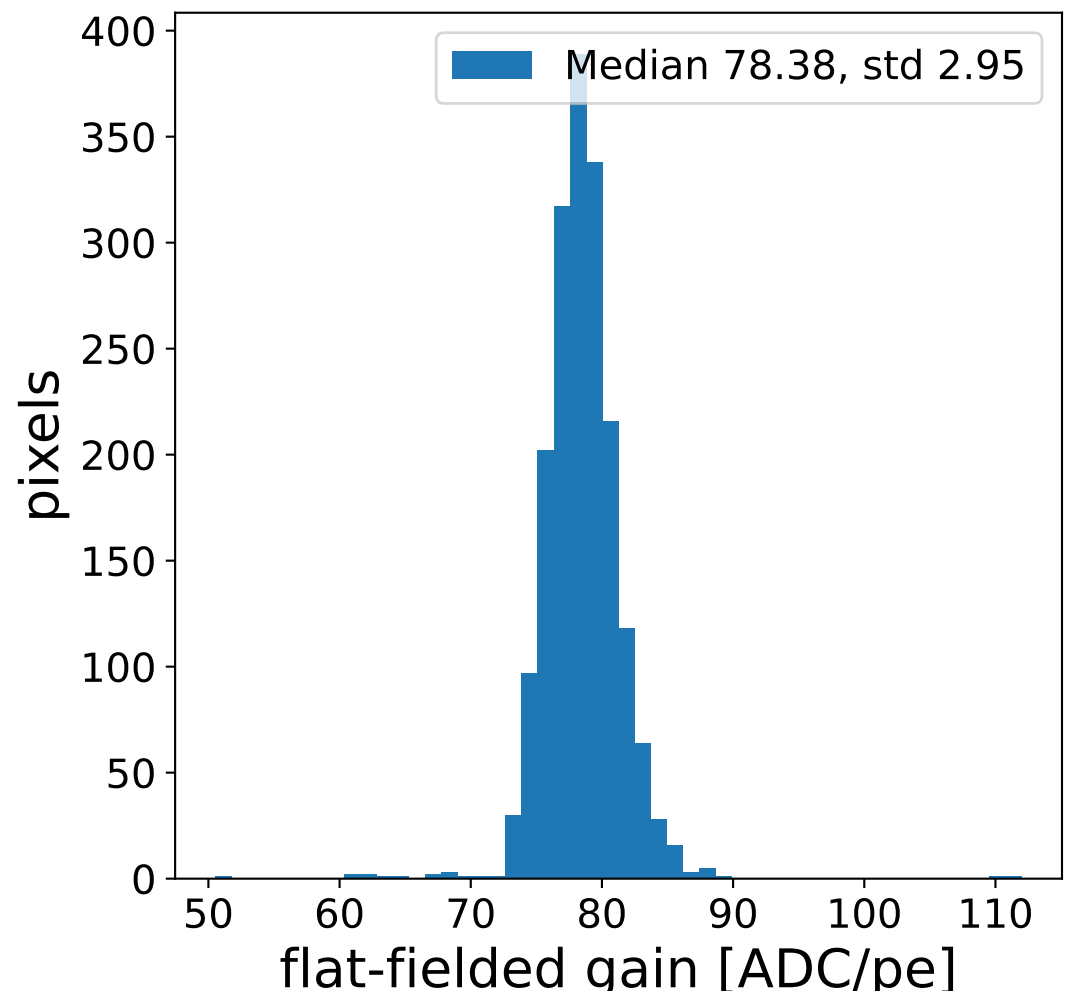
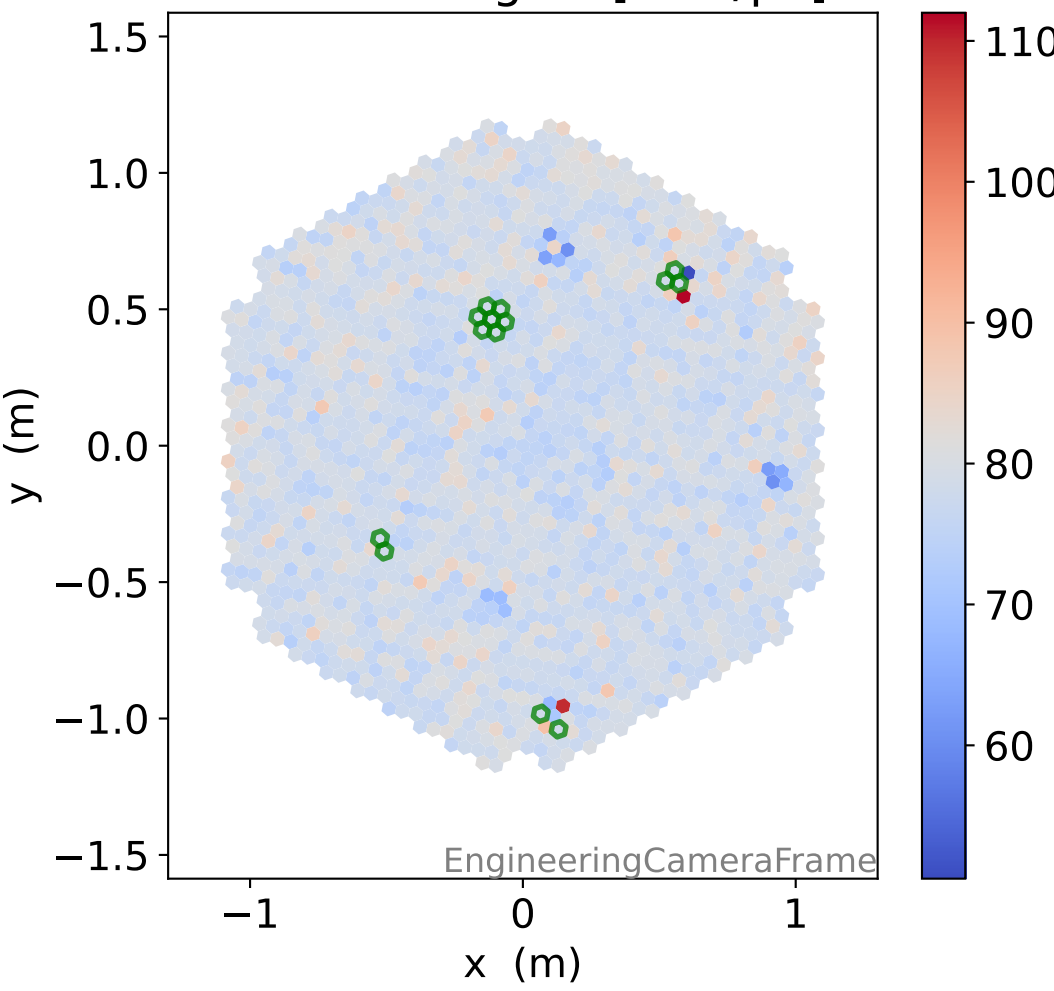
FF sample of 10000 events



pedestal sample of 10000 events

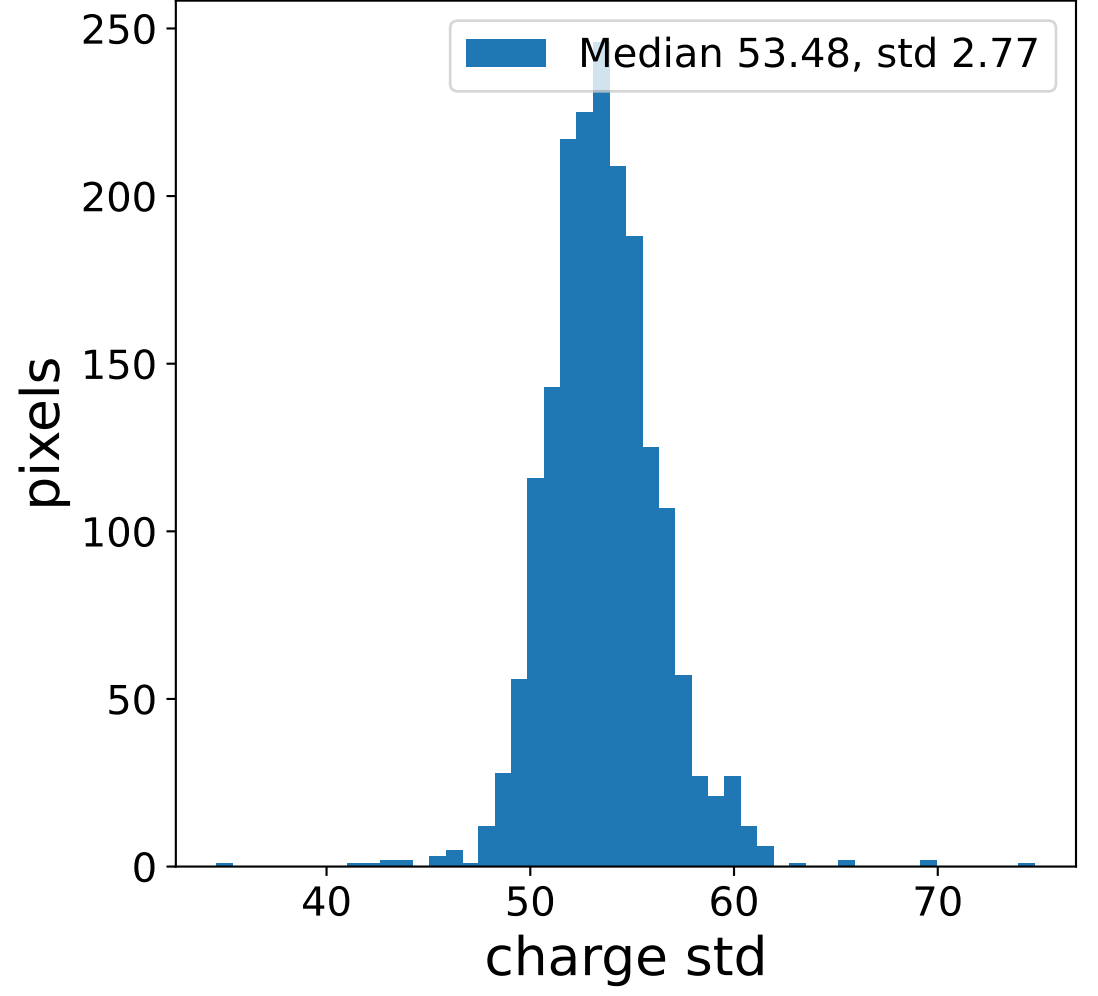
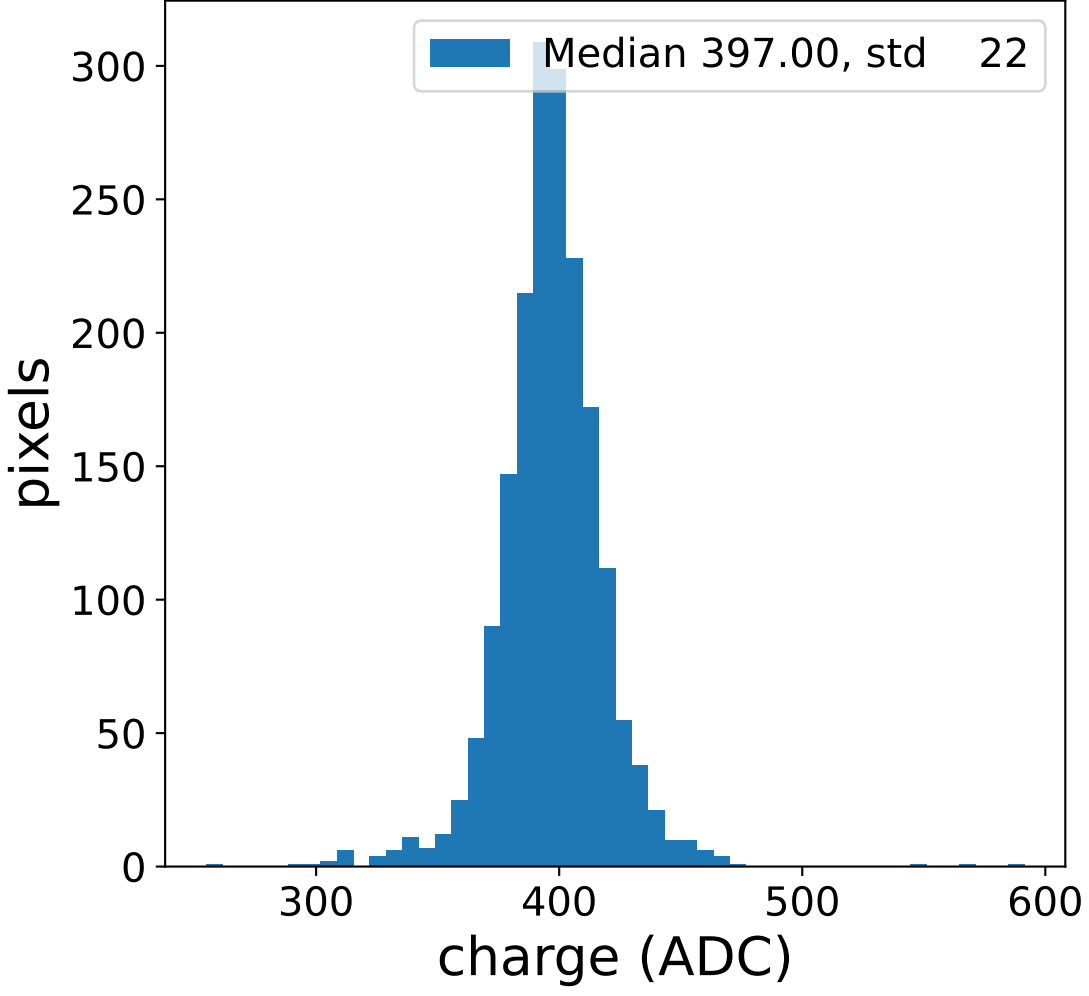


flat-fielded gain [ADC/pe]

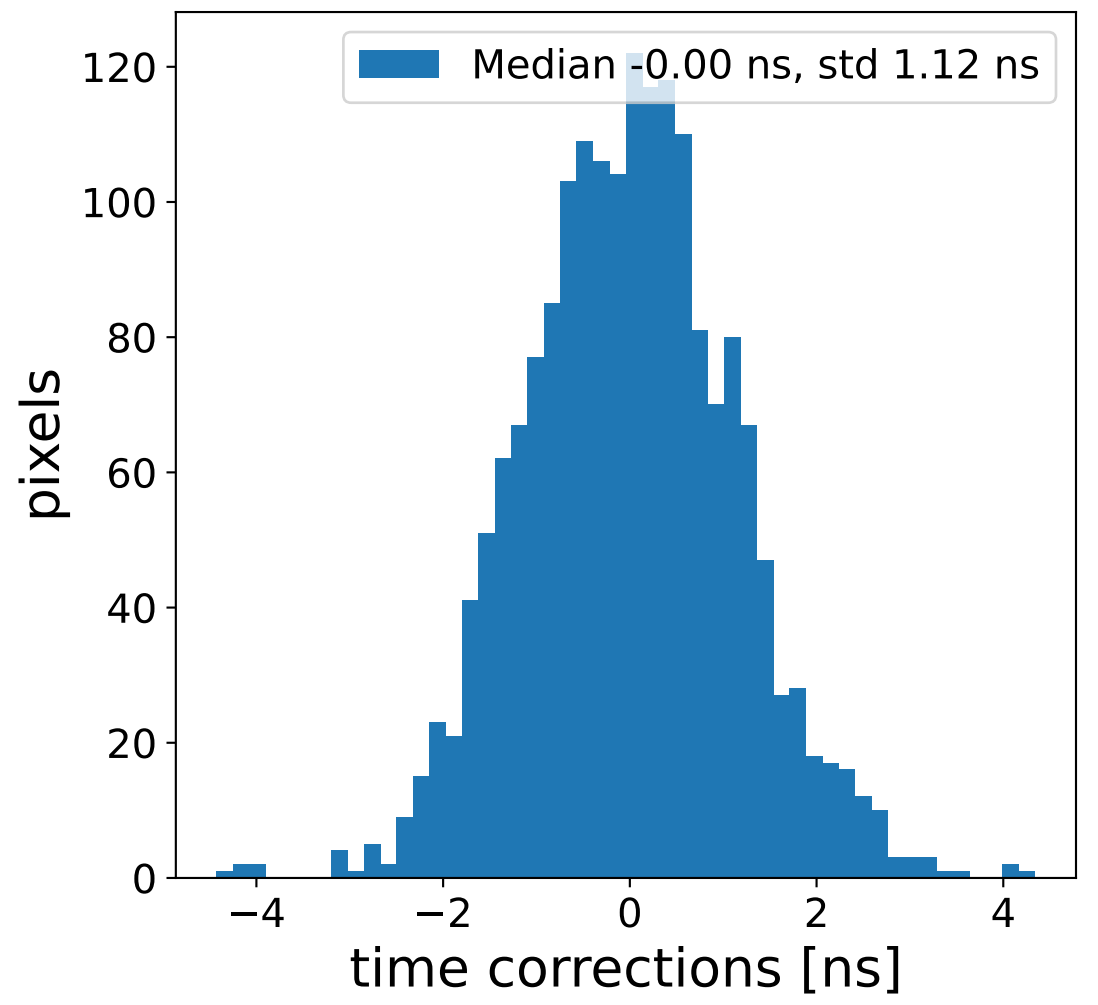
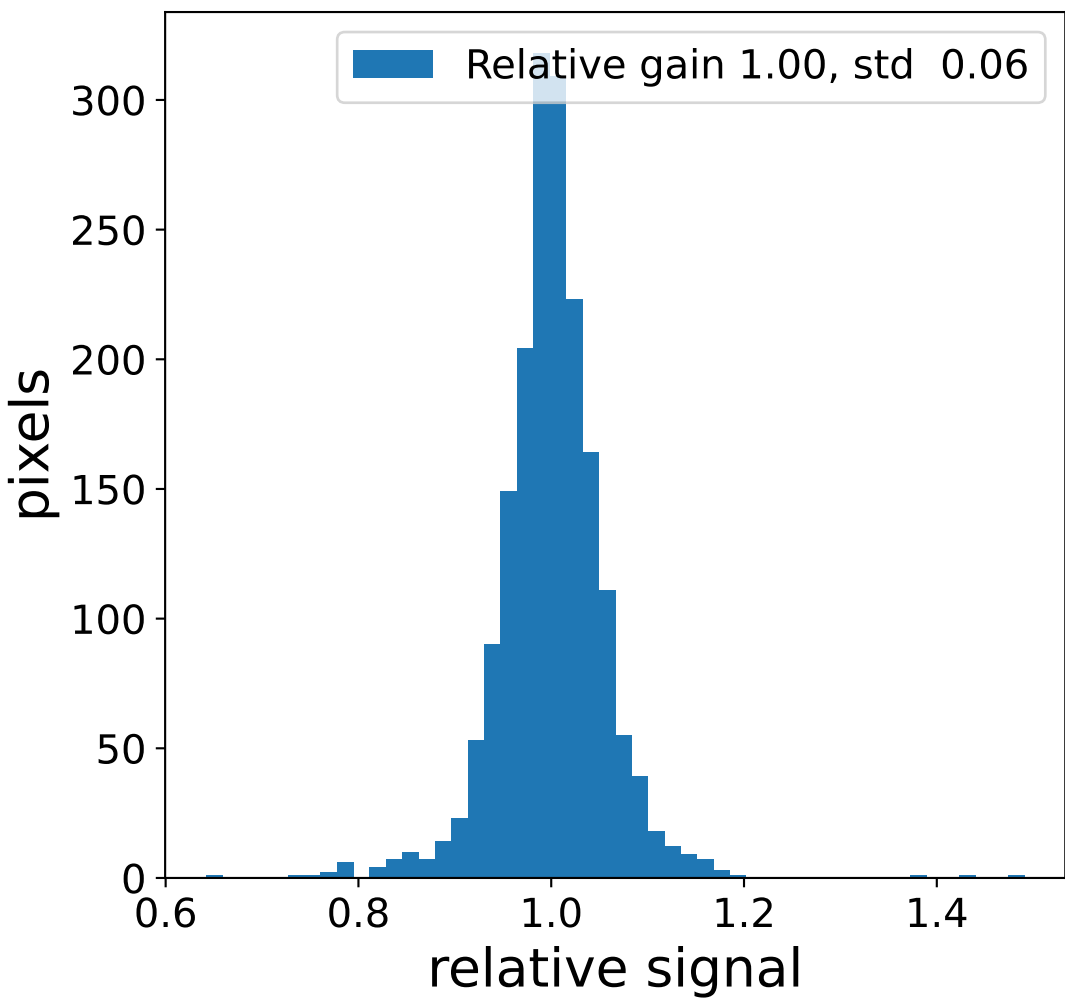
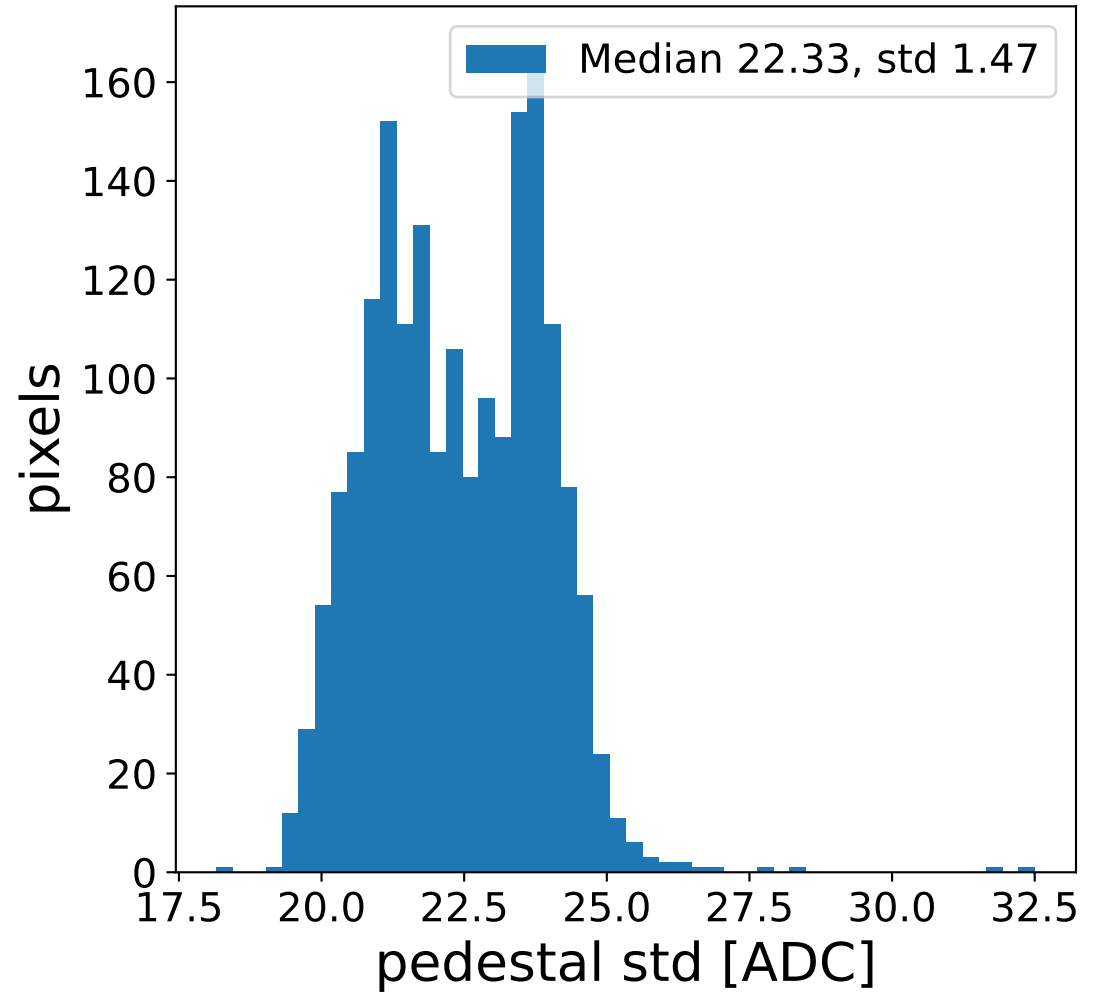
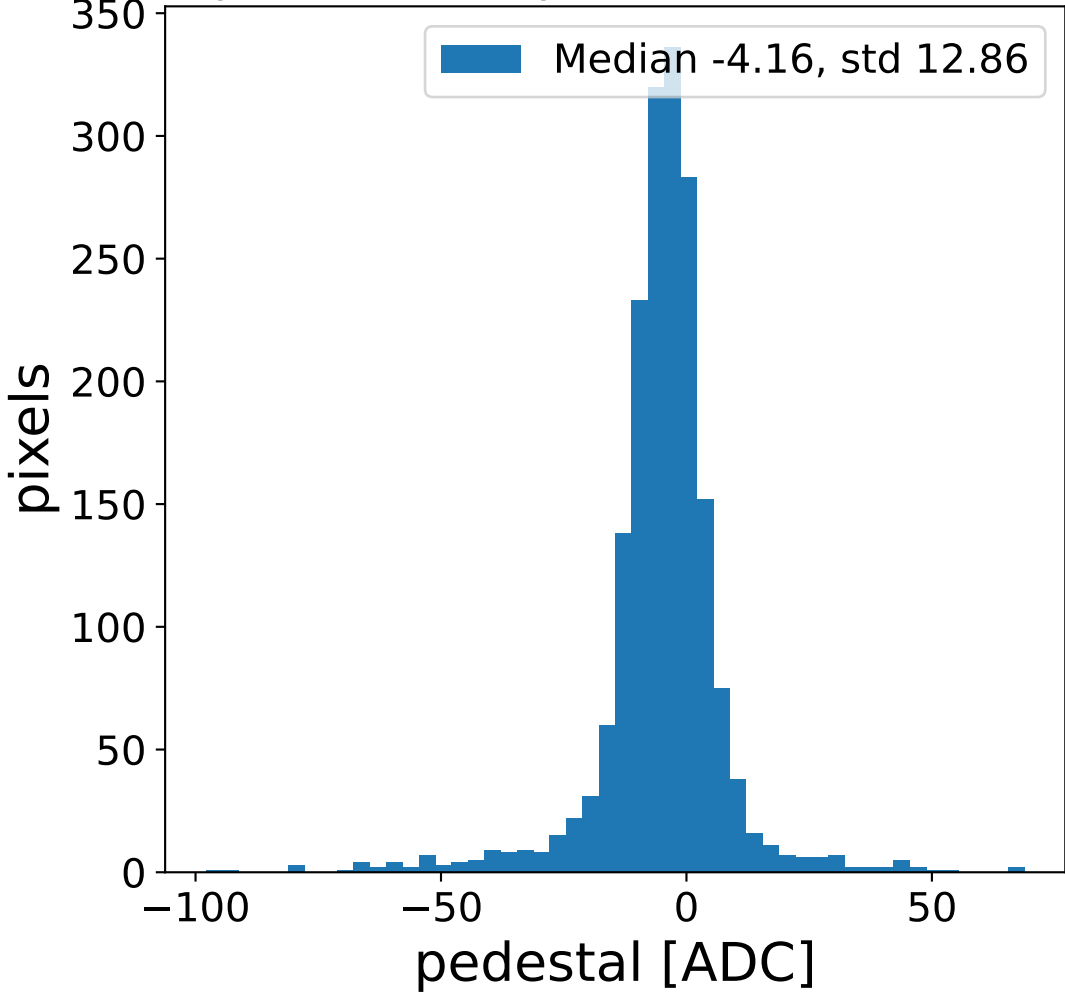


Run 7076 channel: LG

FF sample of 10000 events



pedestal sample of 10000 events



flat-fielded gain [ADC/pe]

