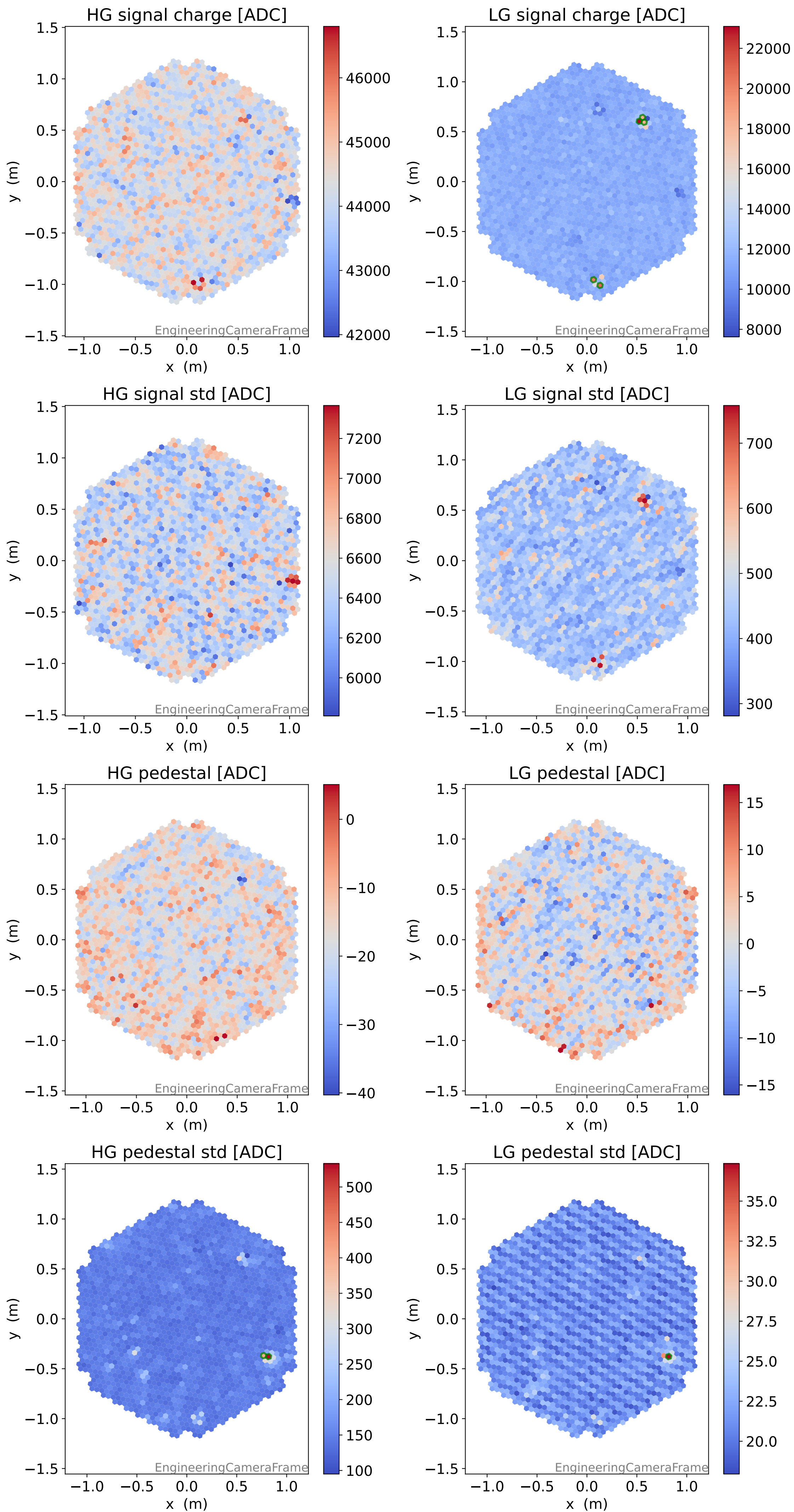
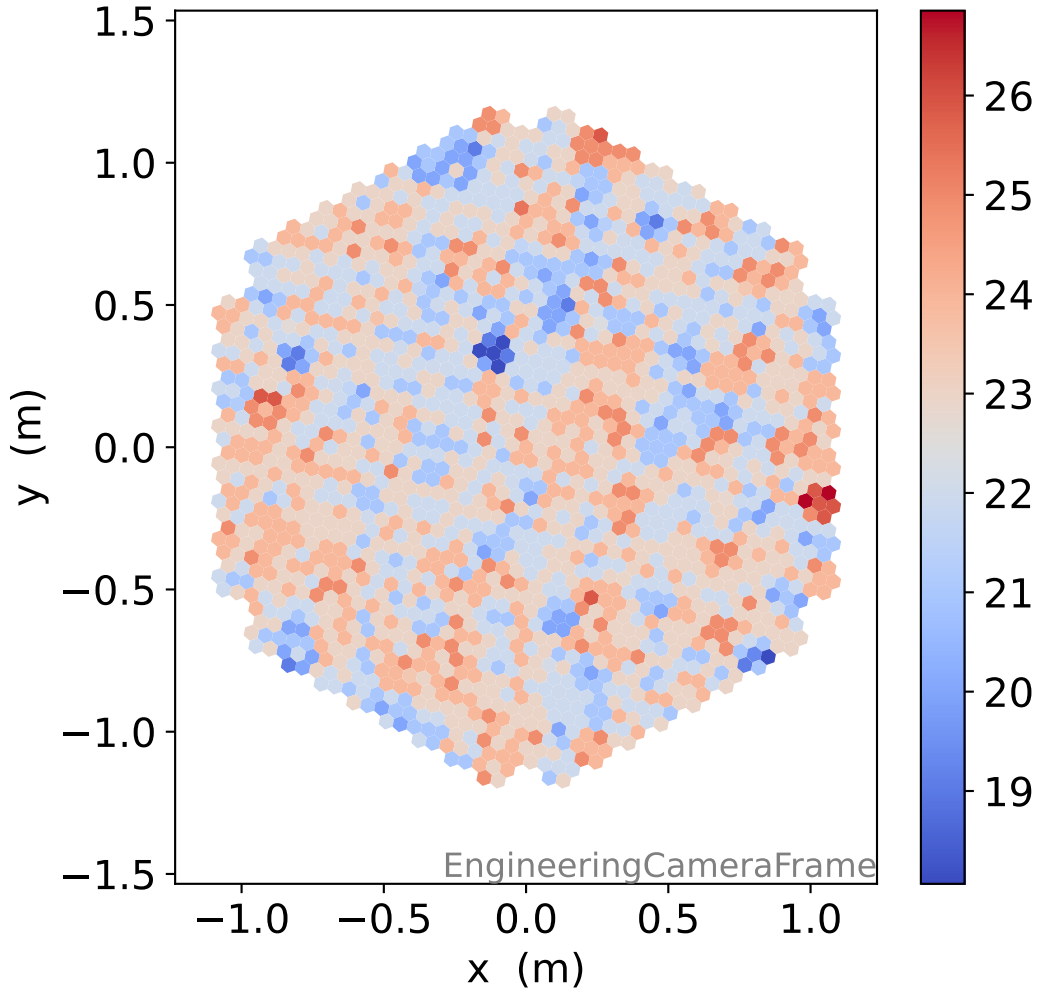


# Run 6103

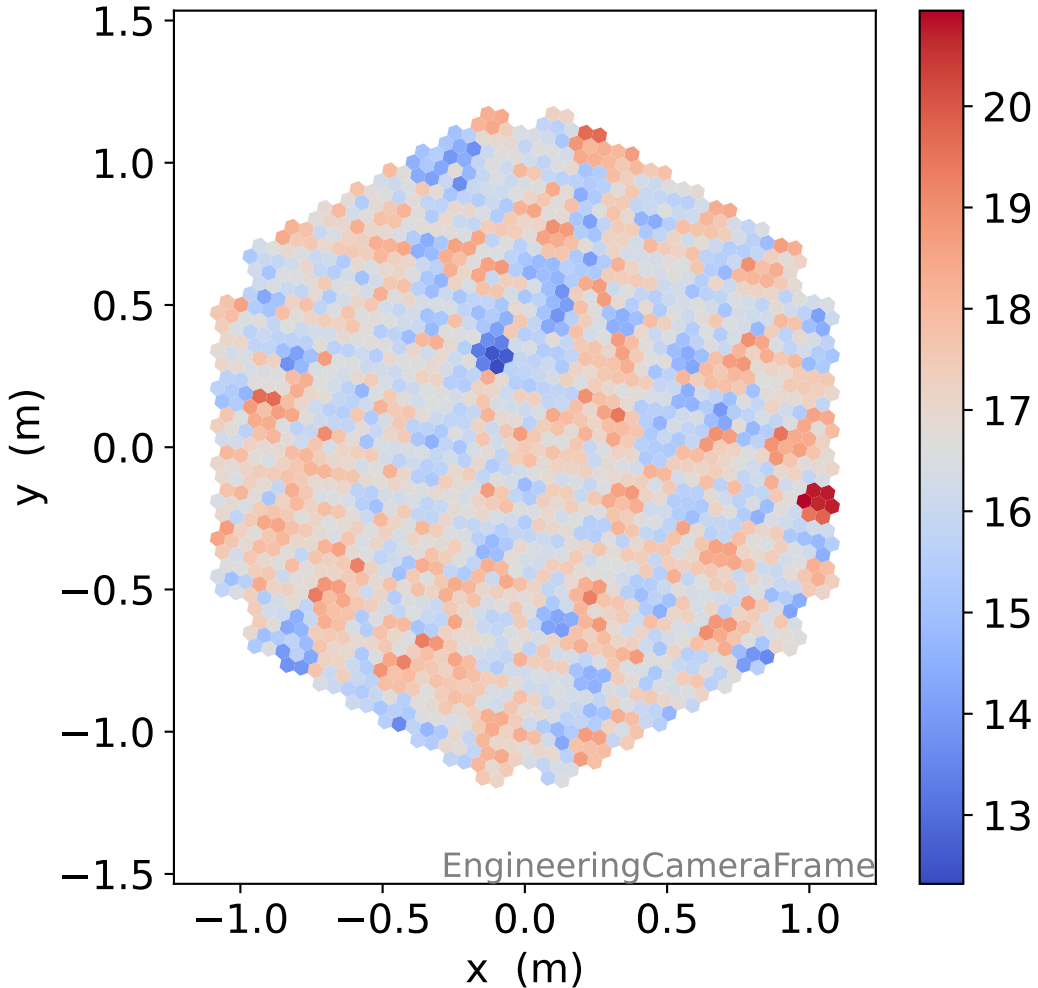


# Run 6103

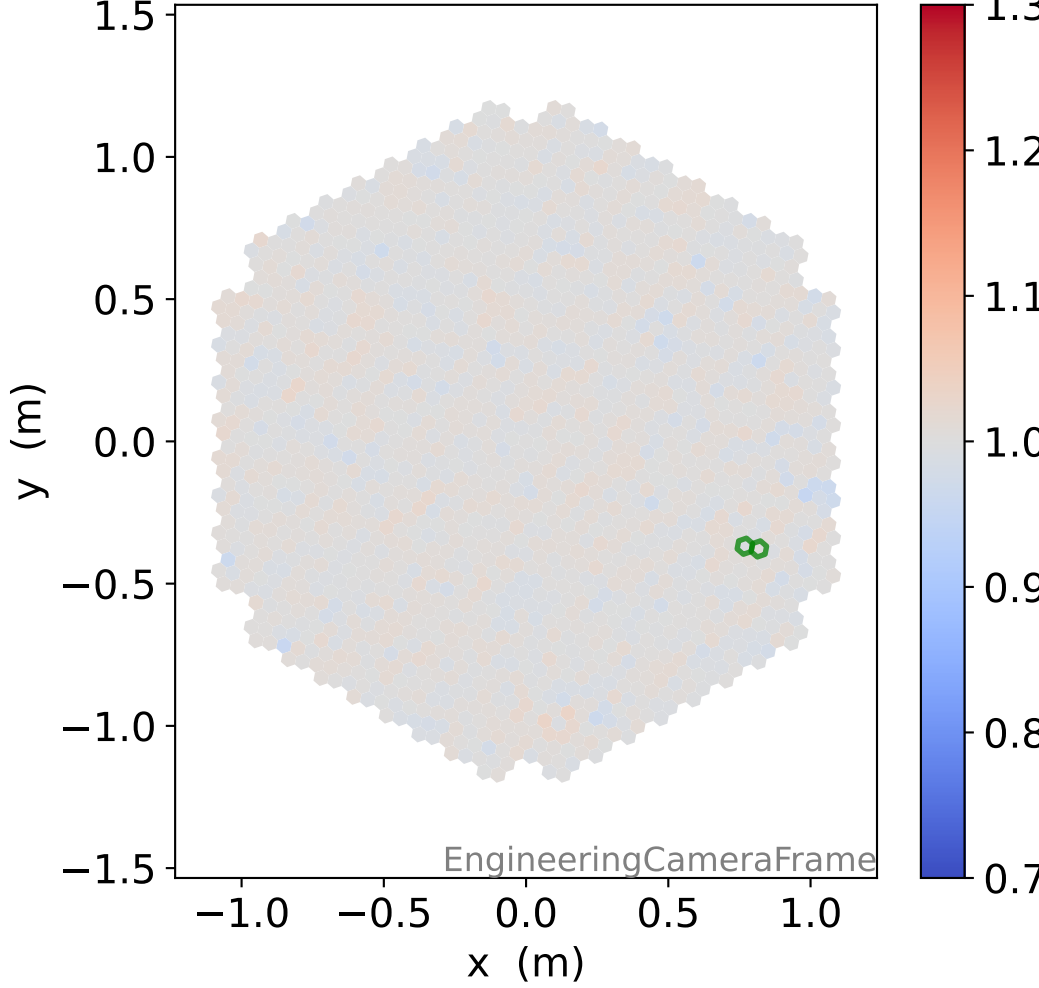
### HG time



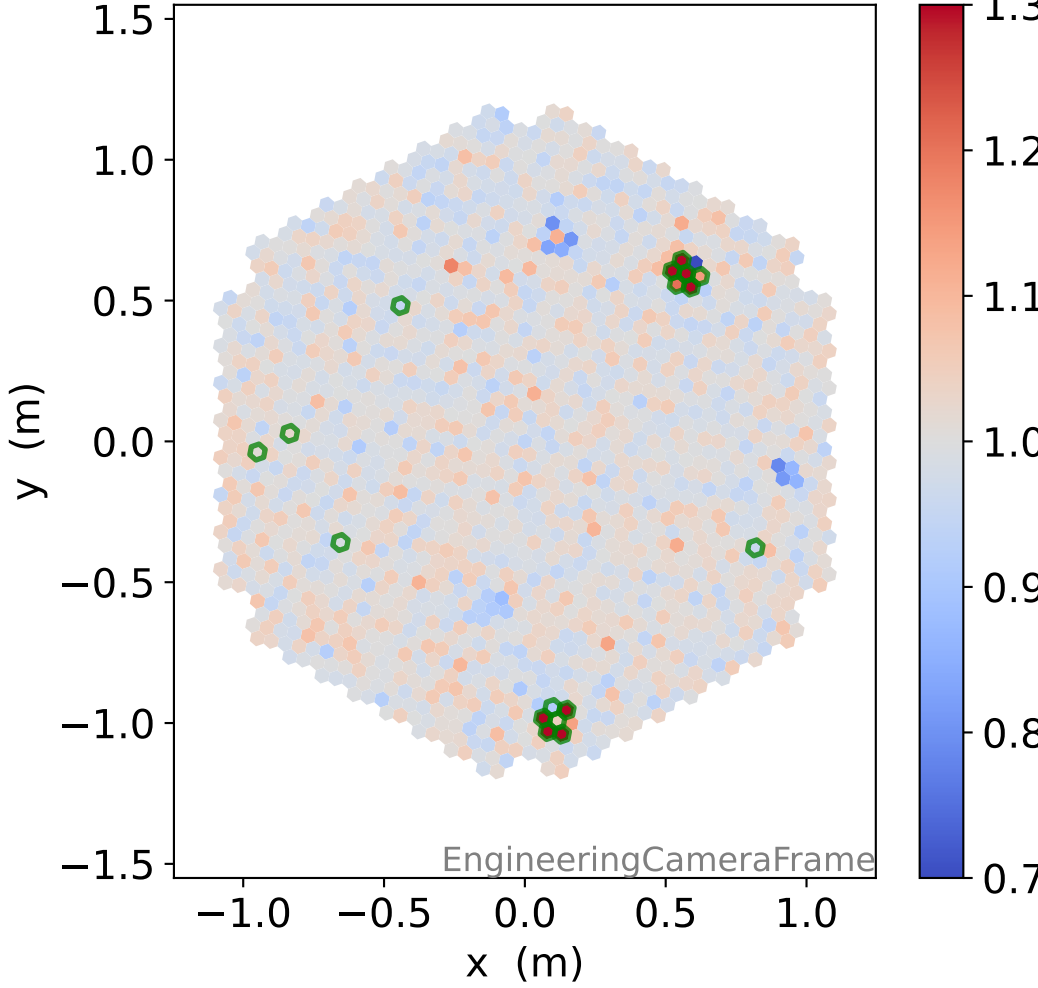
### LG time



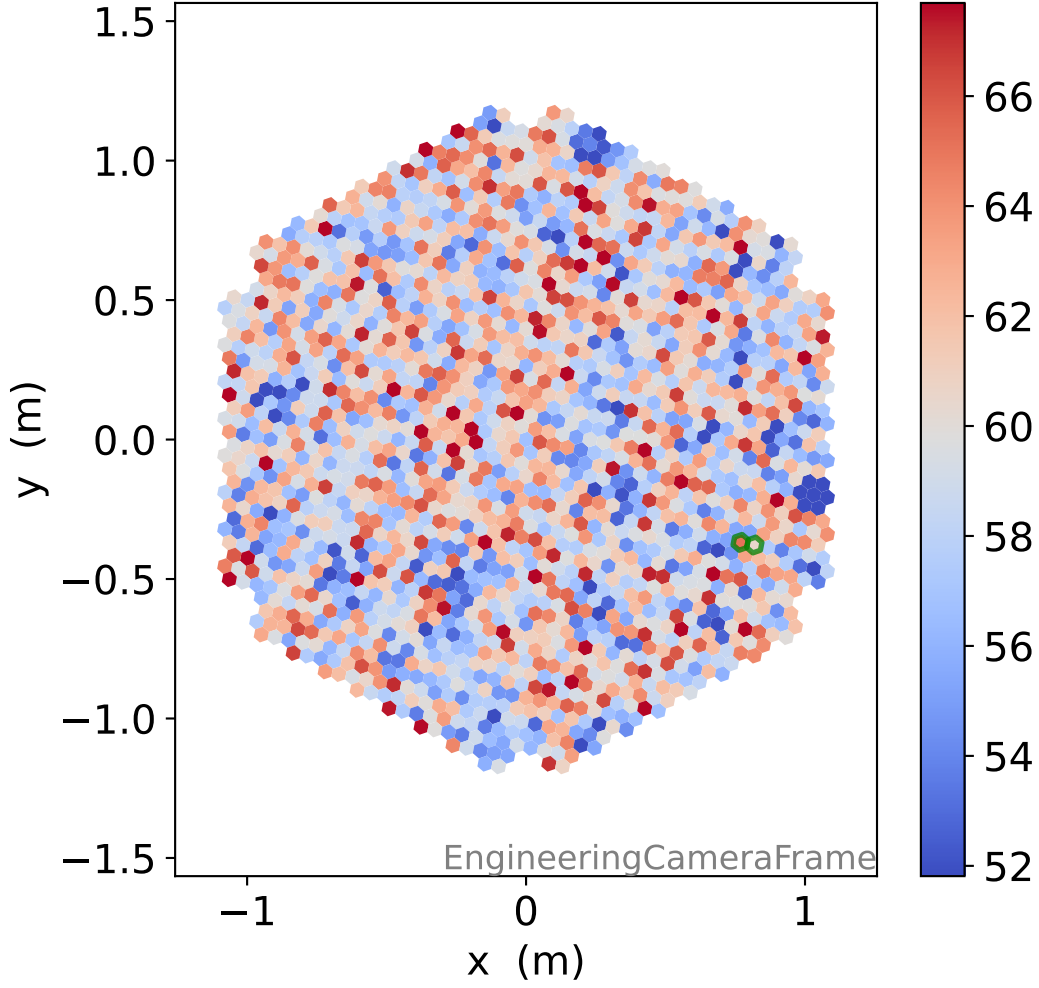
### HG relative signal



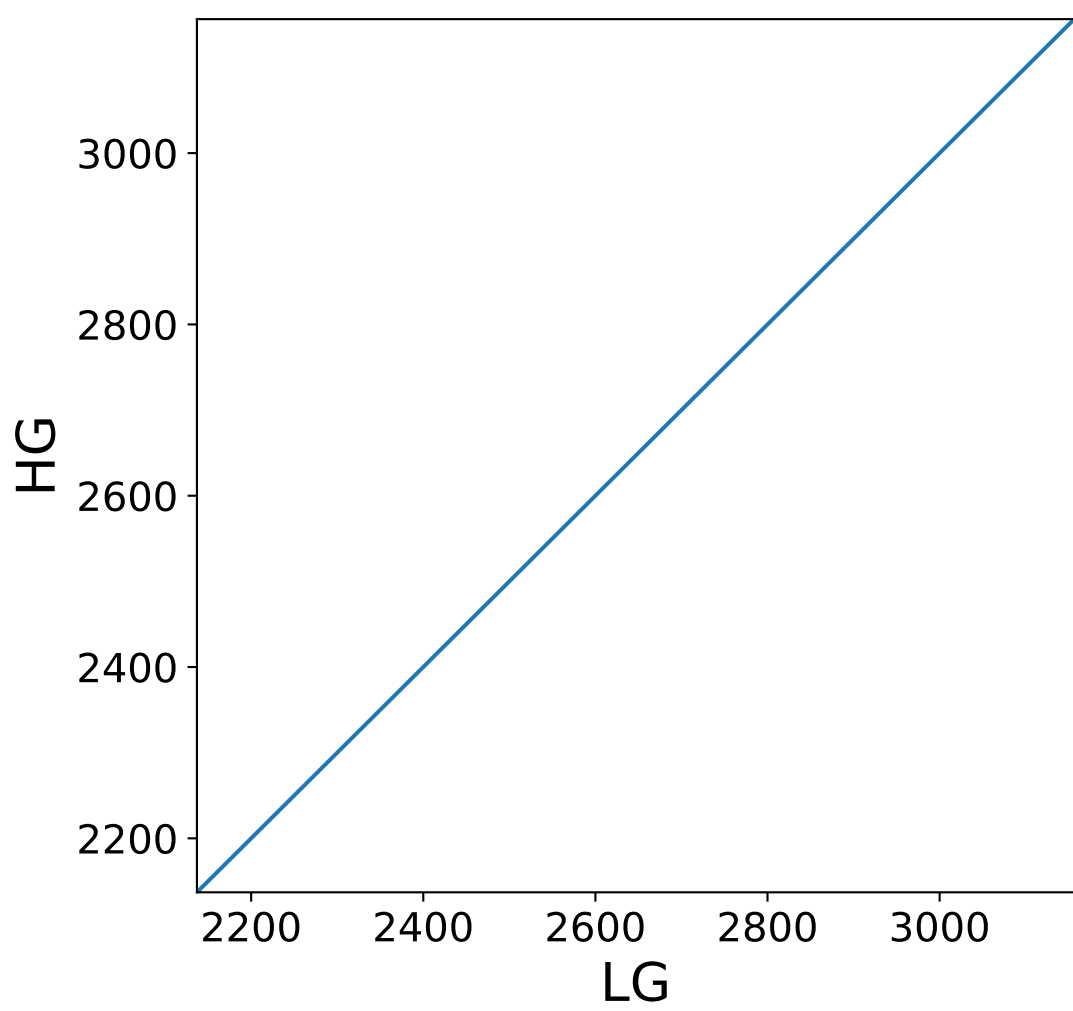
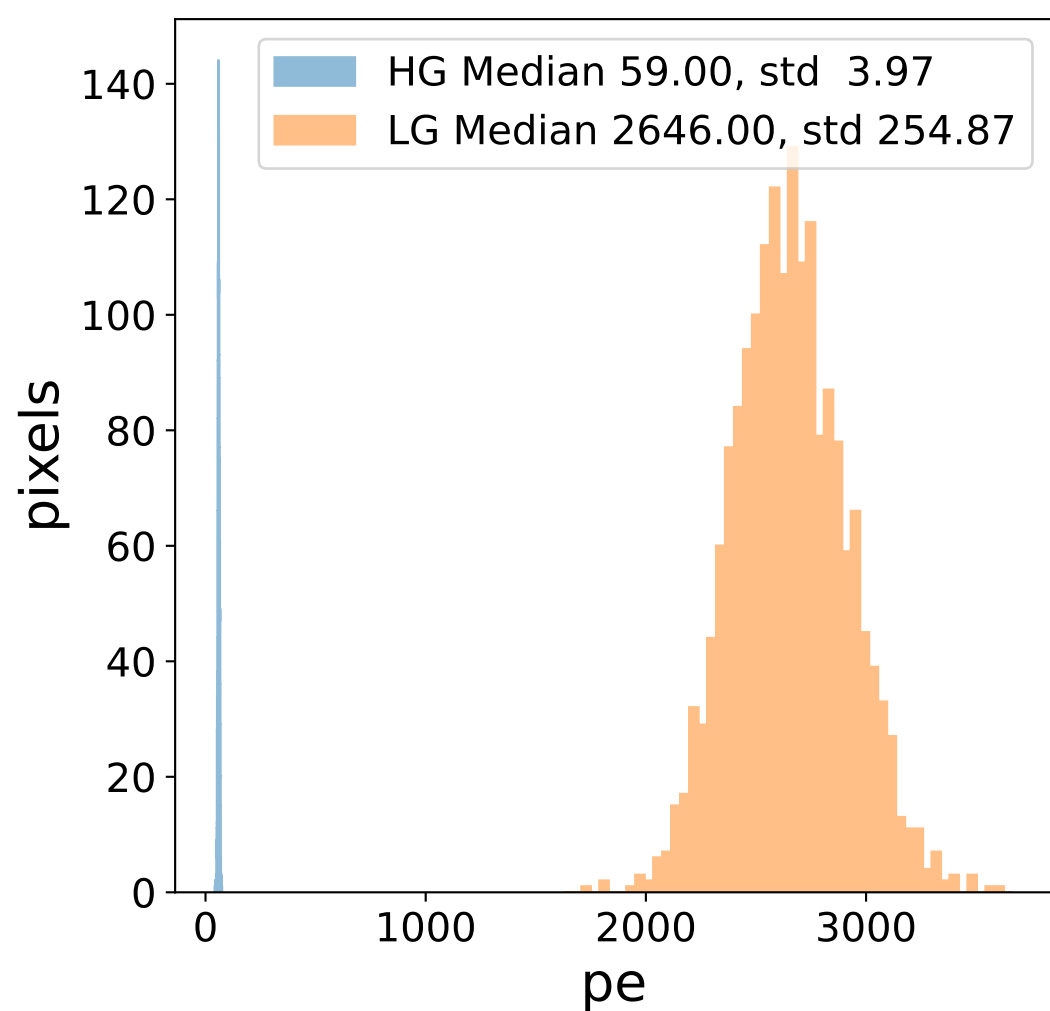
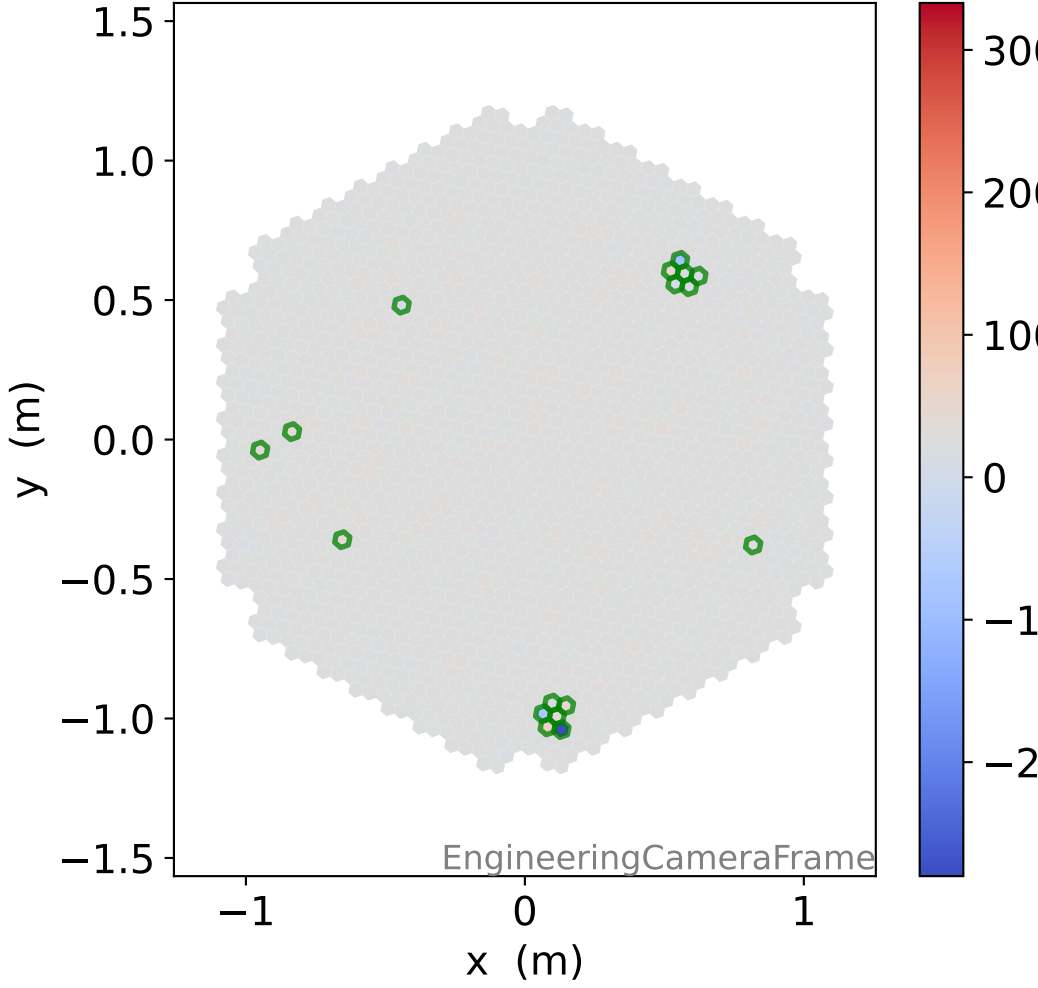
### LG relative signal



### HG photon-electrons

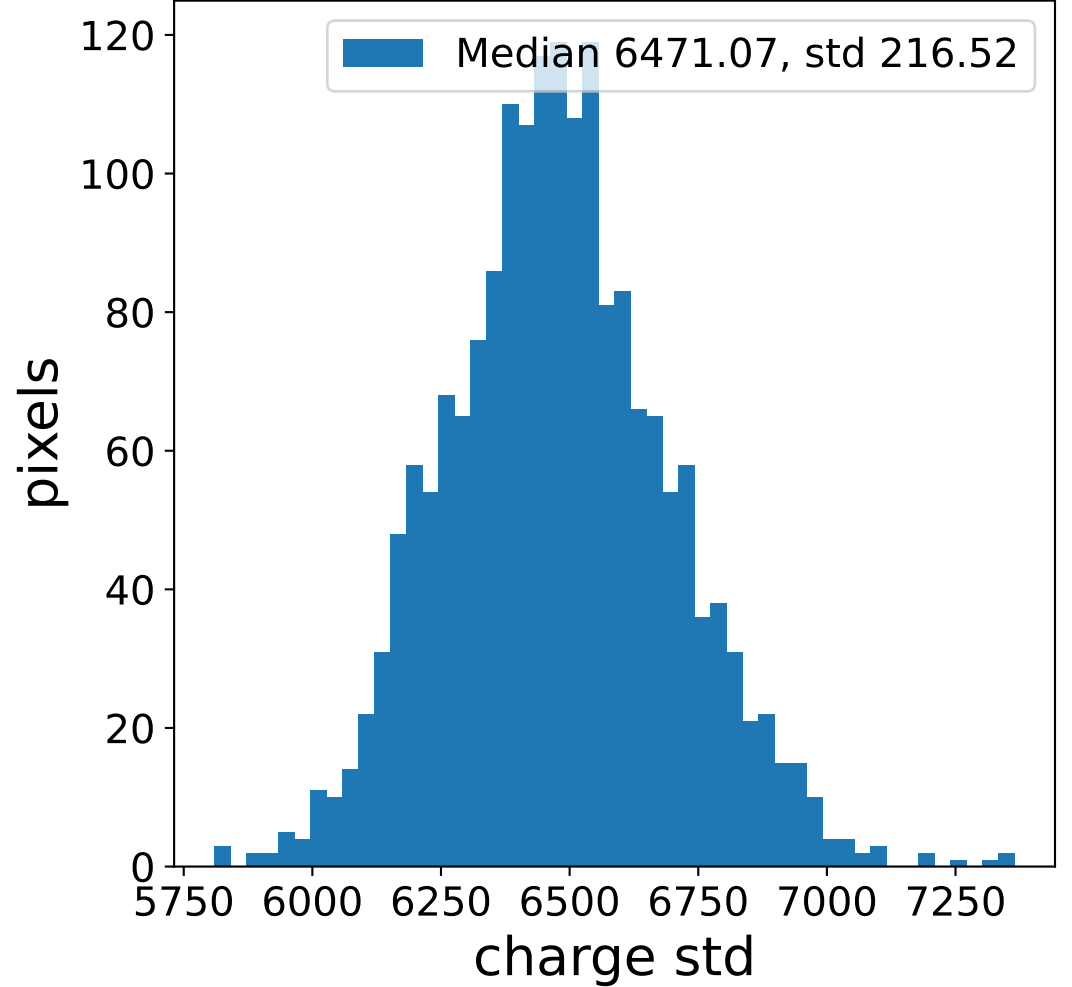
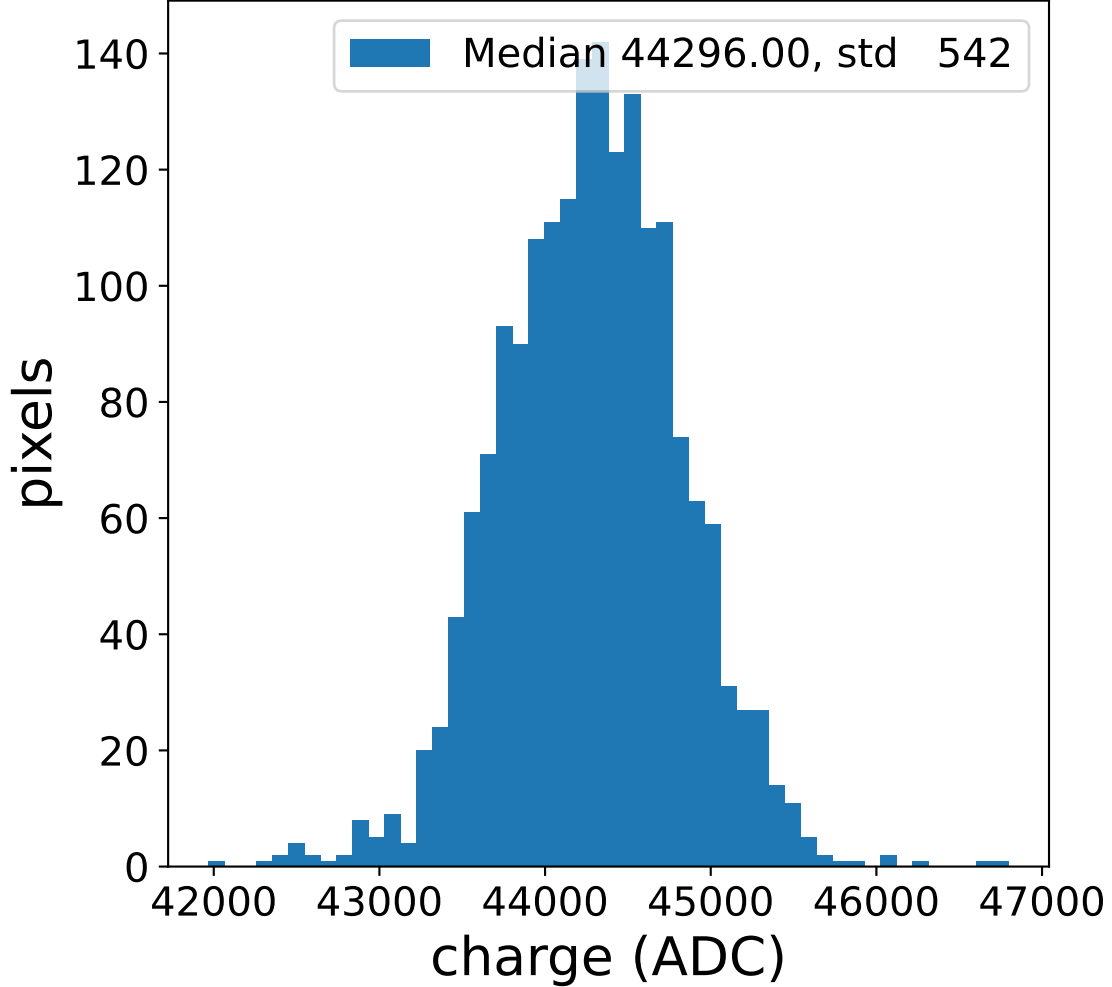


### LG photon-electrons

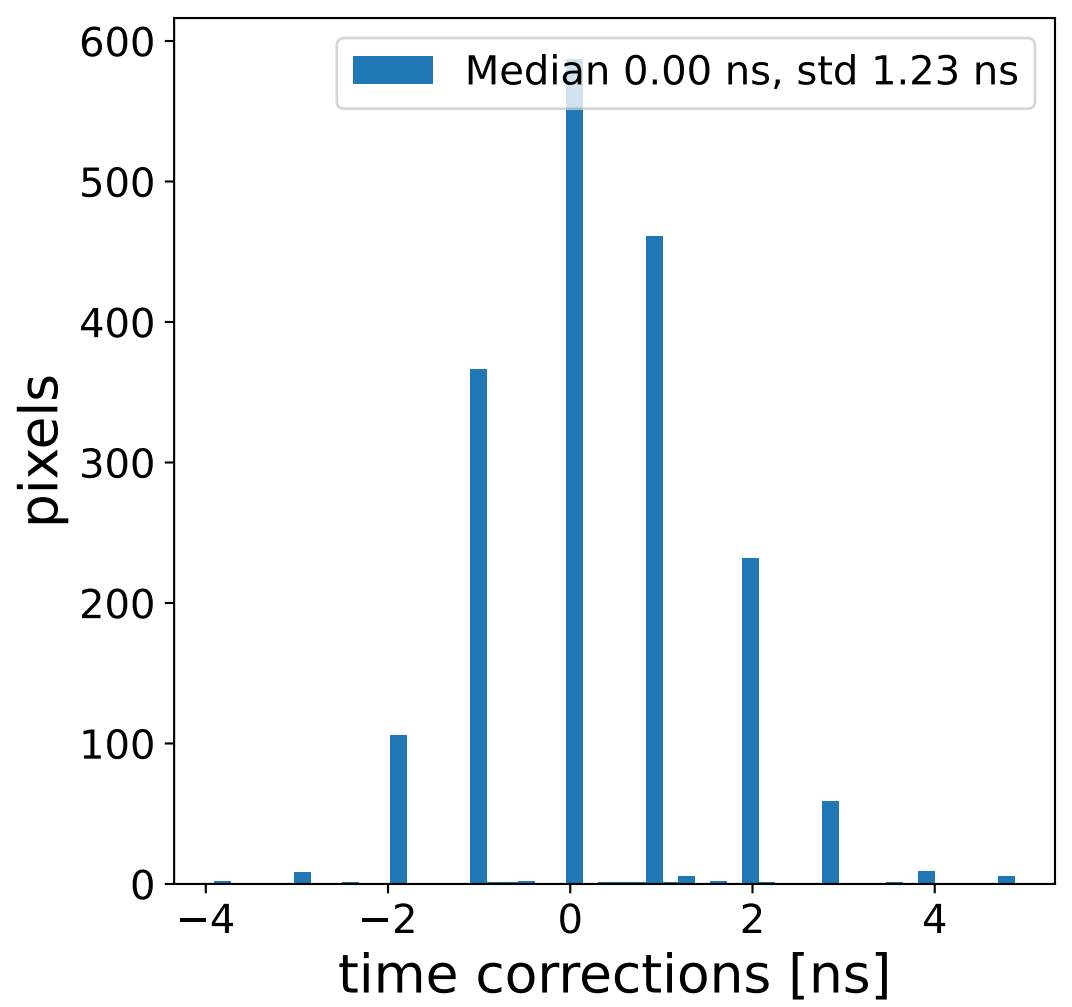
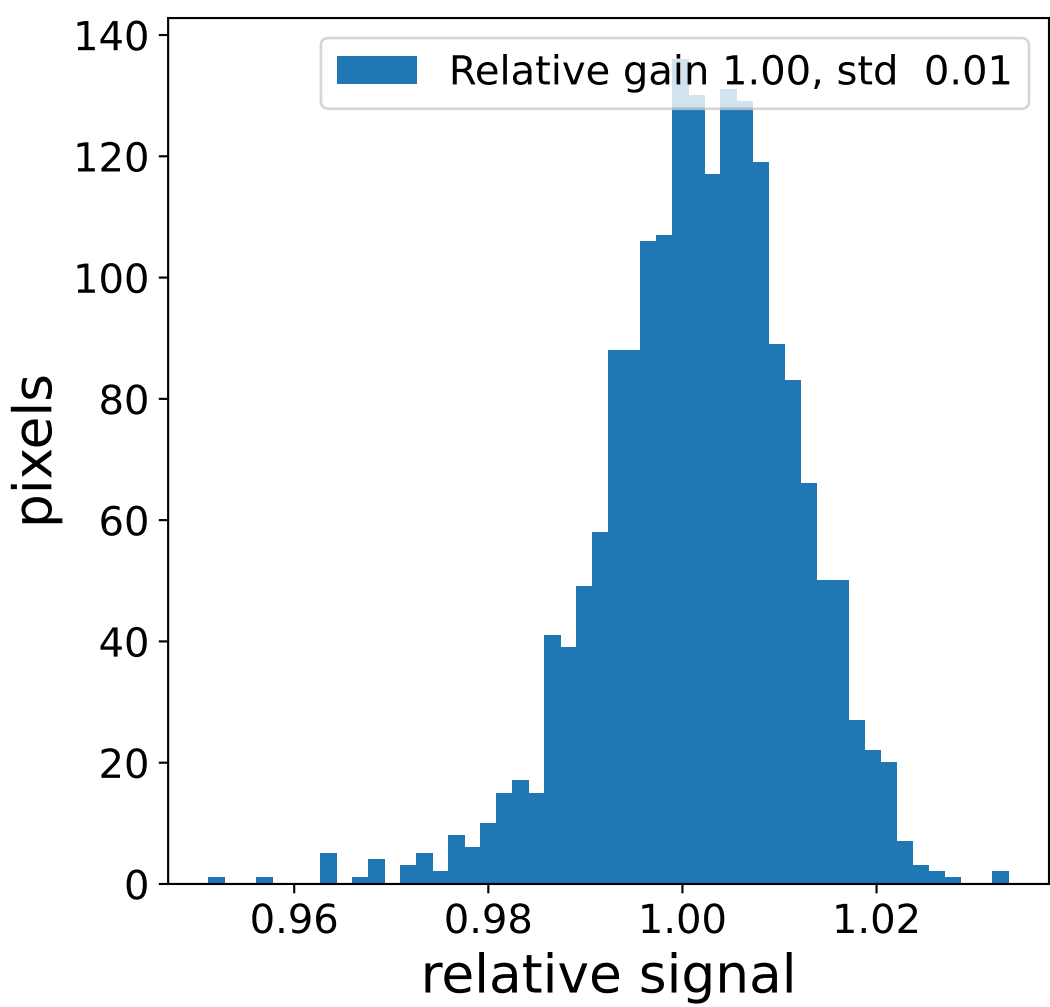
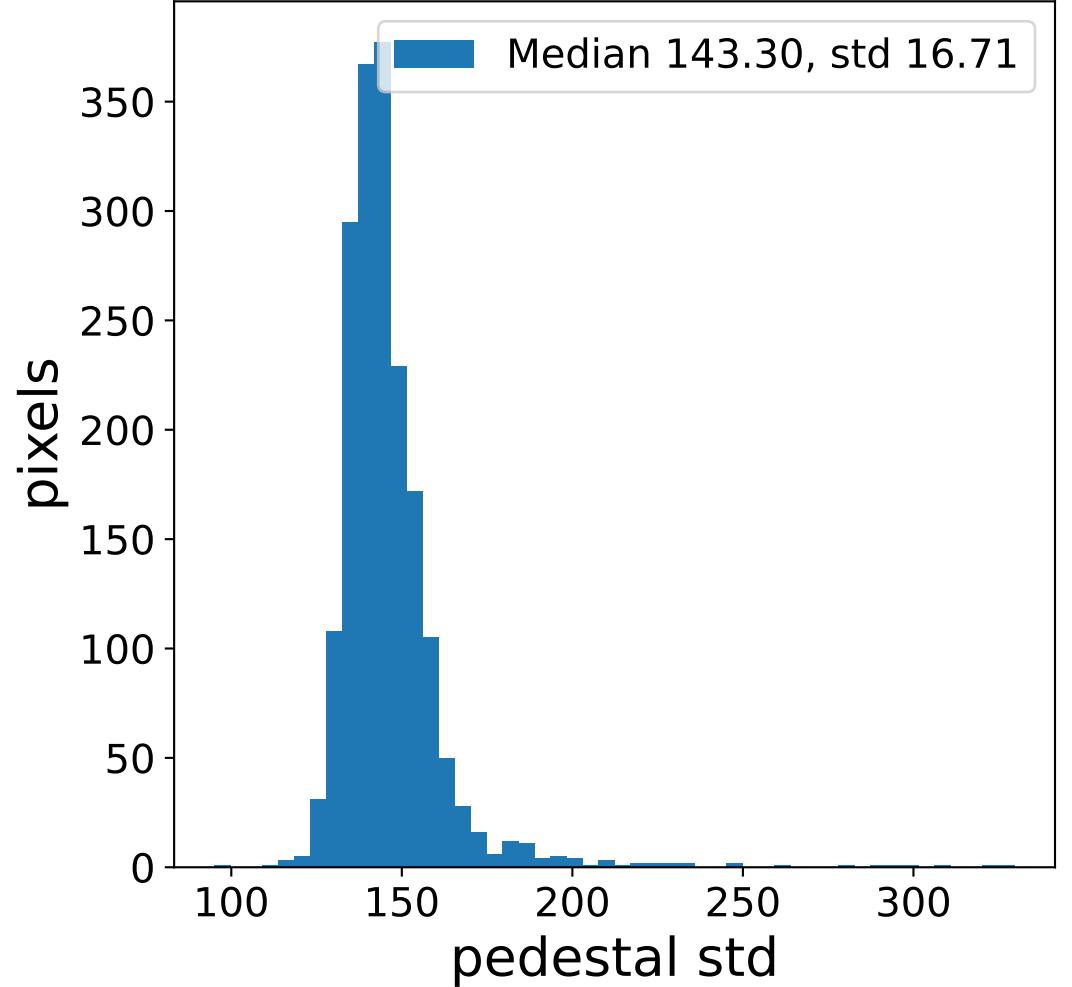
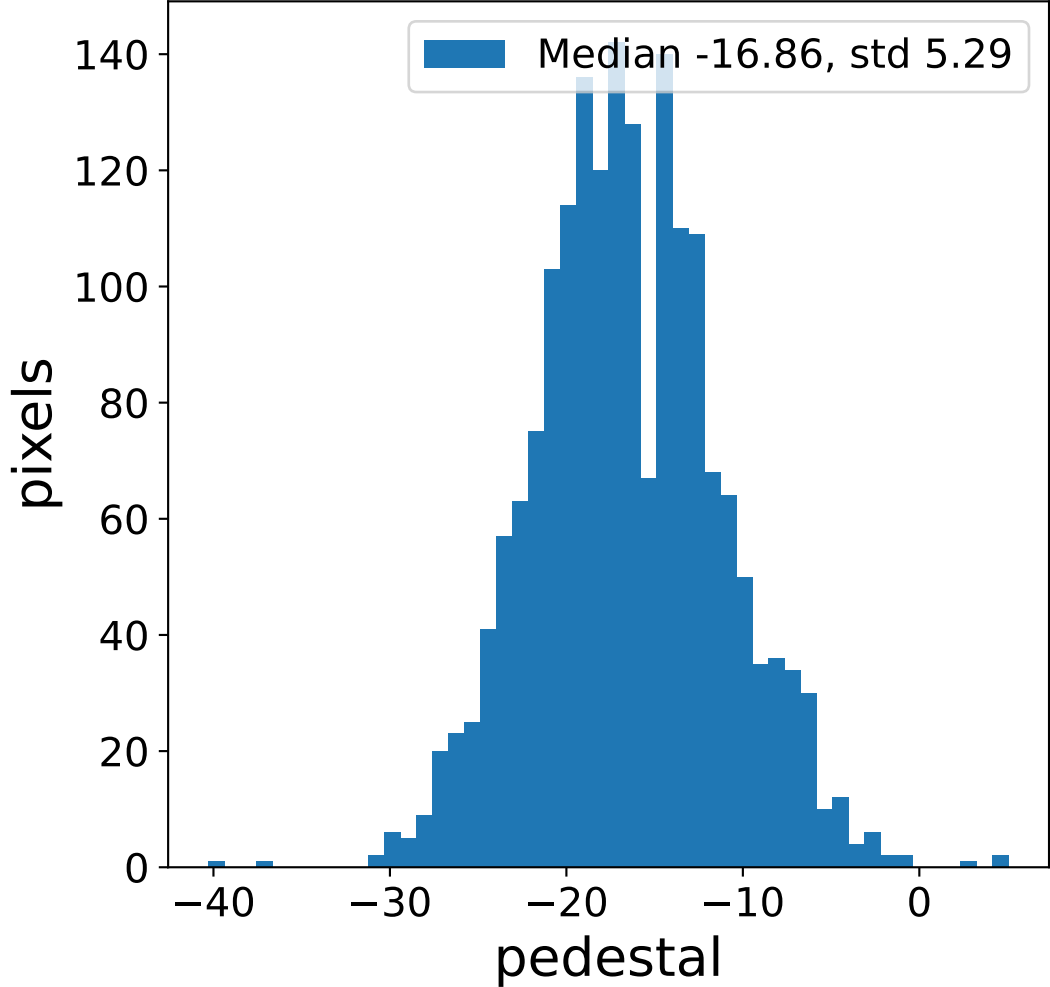


# Run 6103 channel: HG

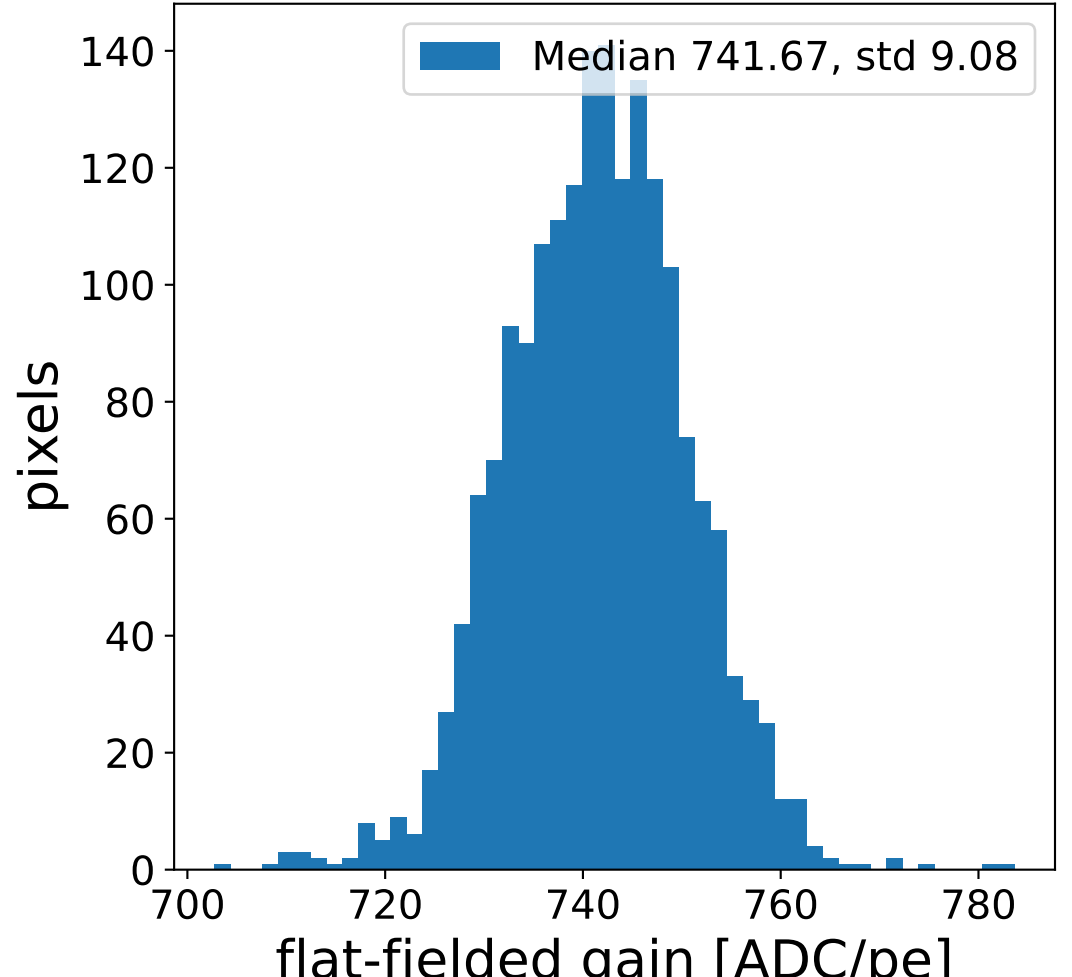
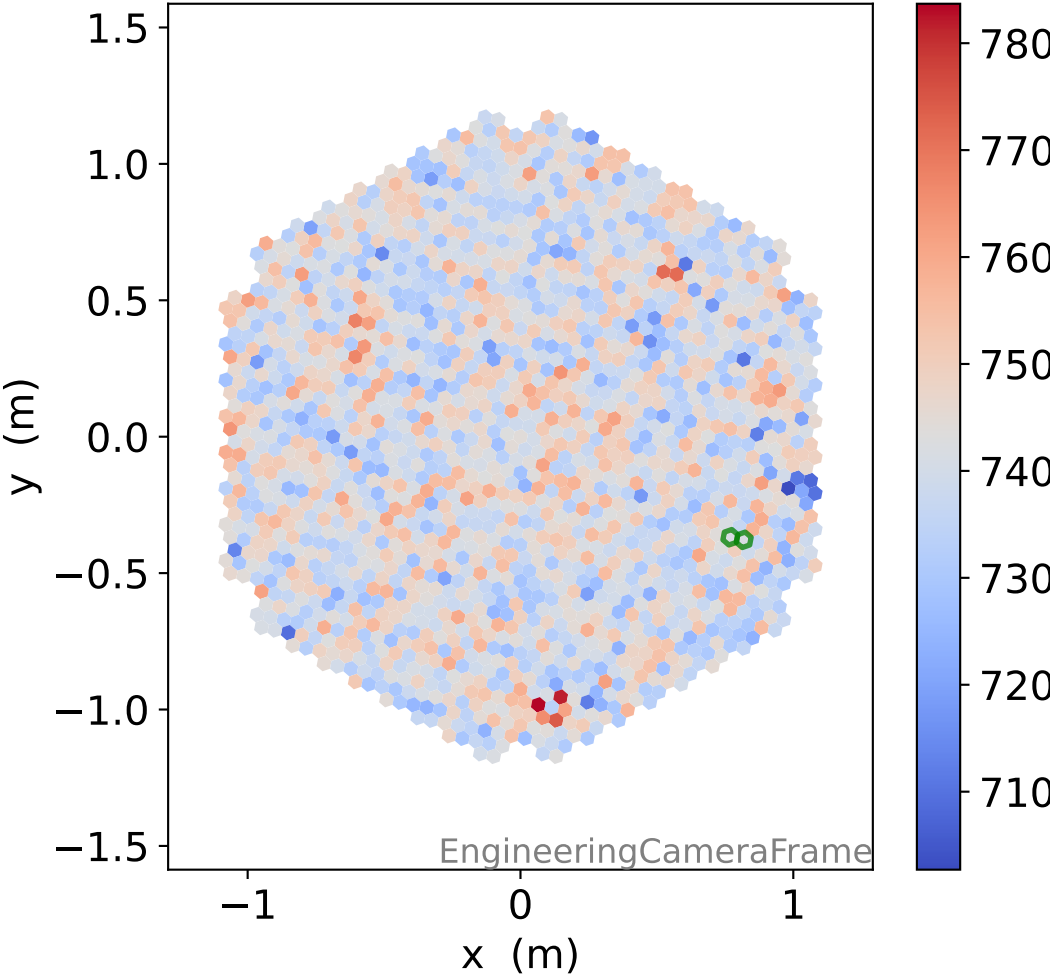
### FF sample of 10000 events



### pedestal sample of 10000 events

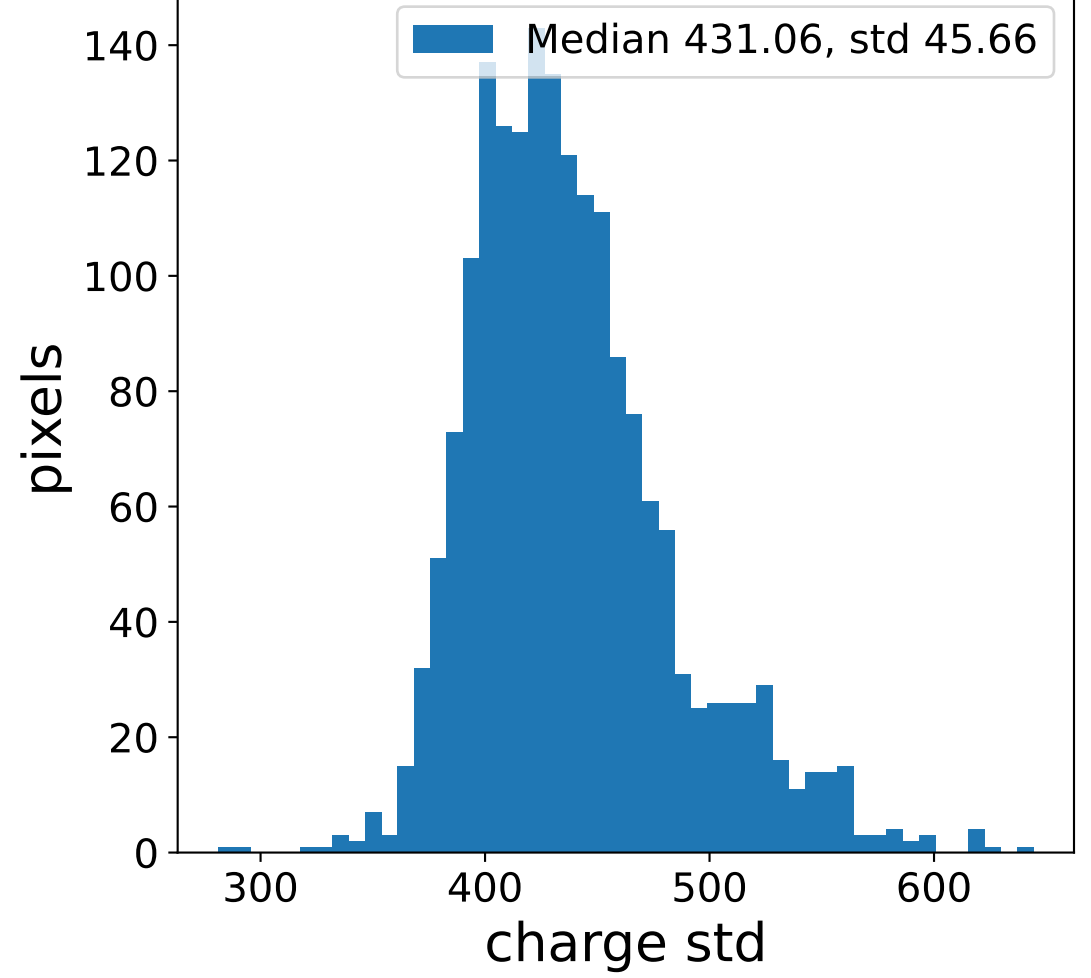
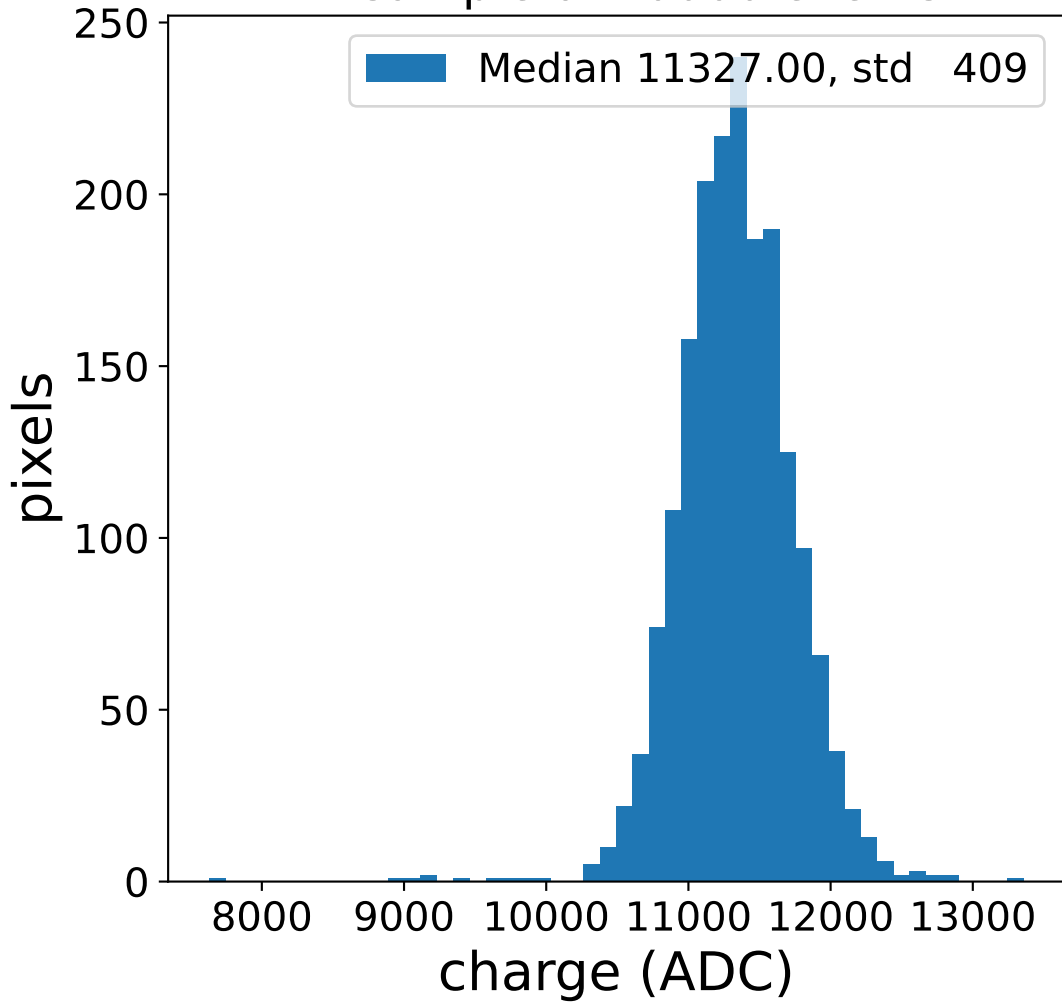


### flat-fielded gain [ADC/pe]

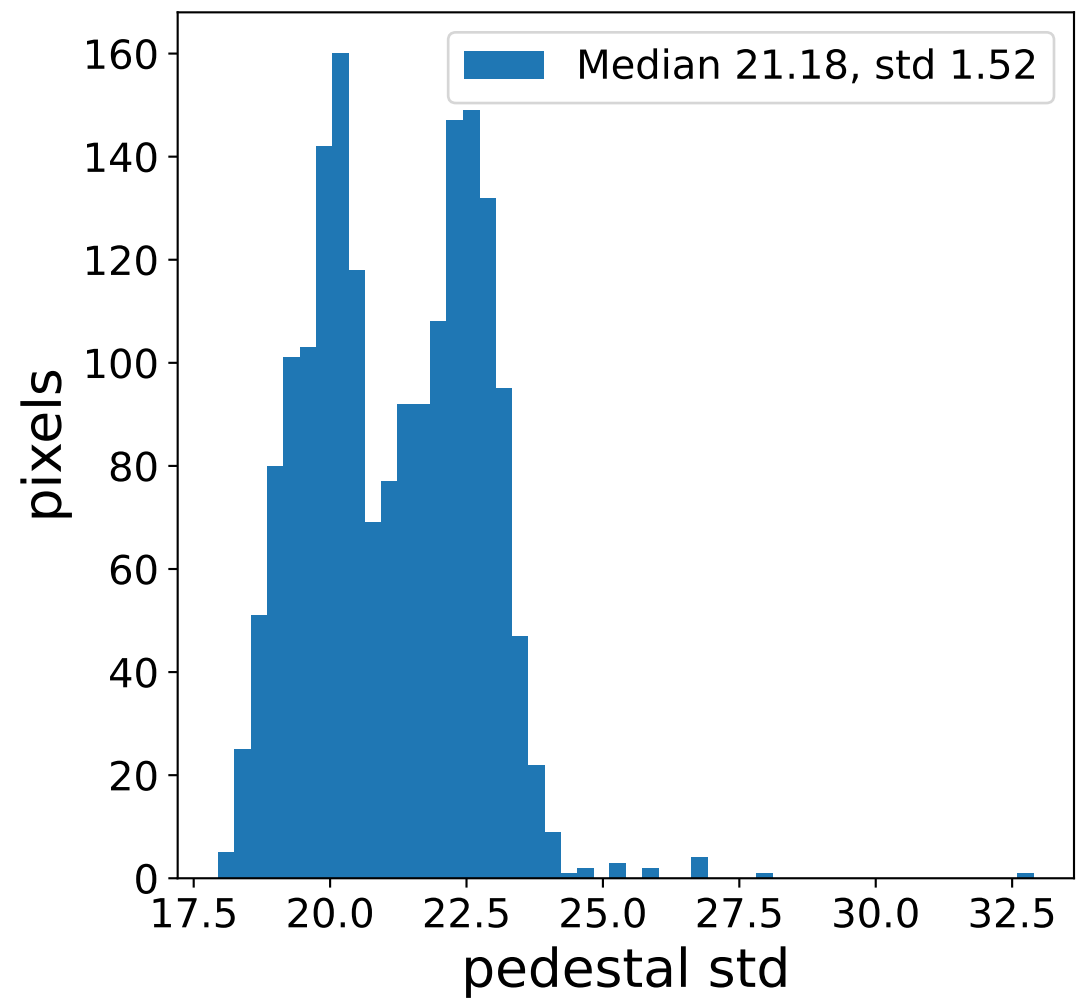
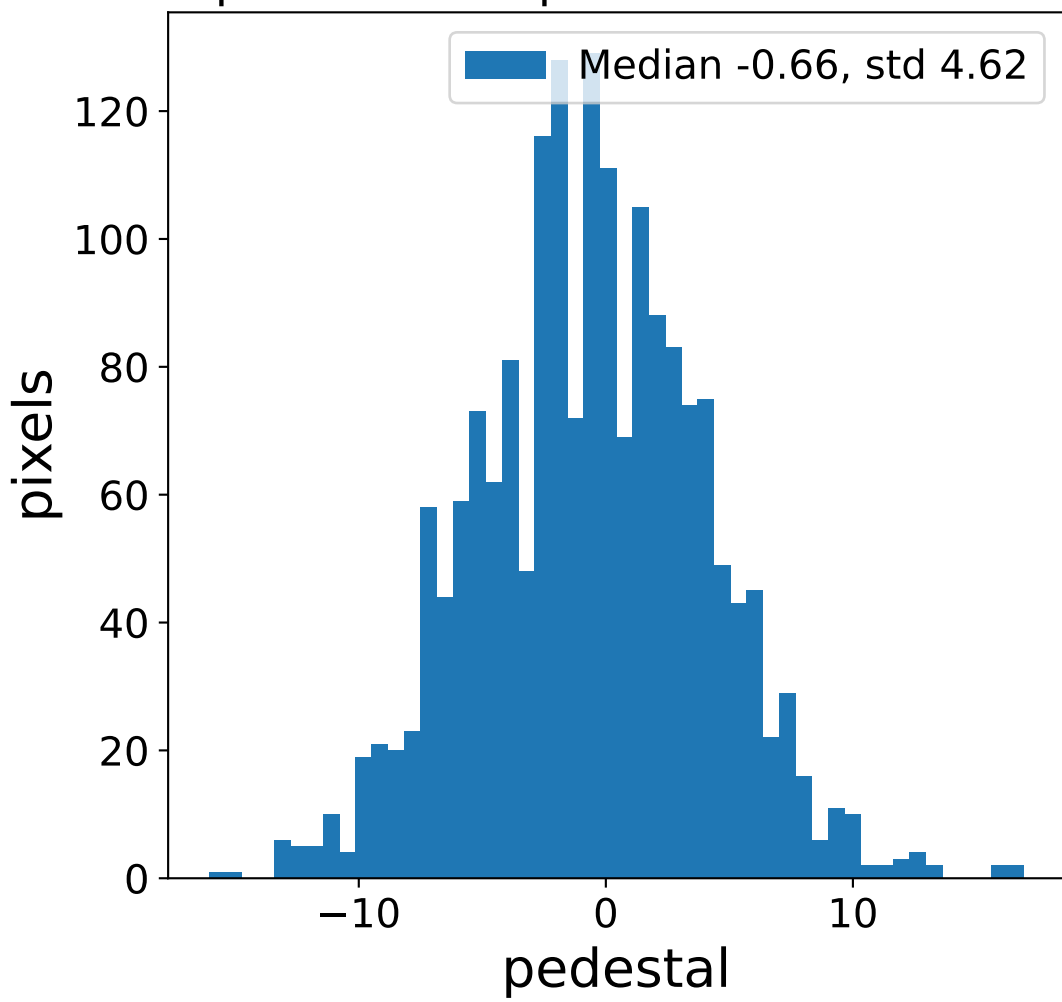


# Run 6103 channel: LG

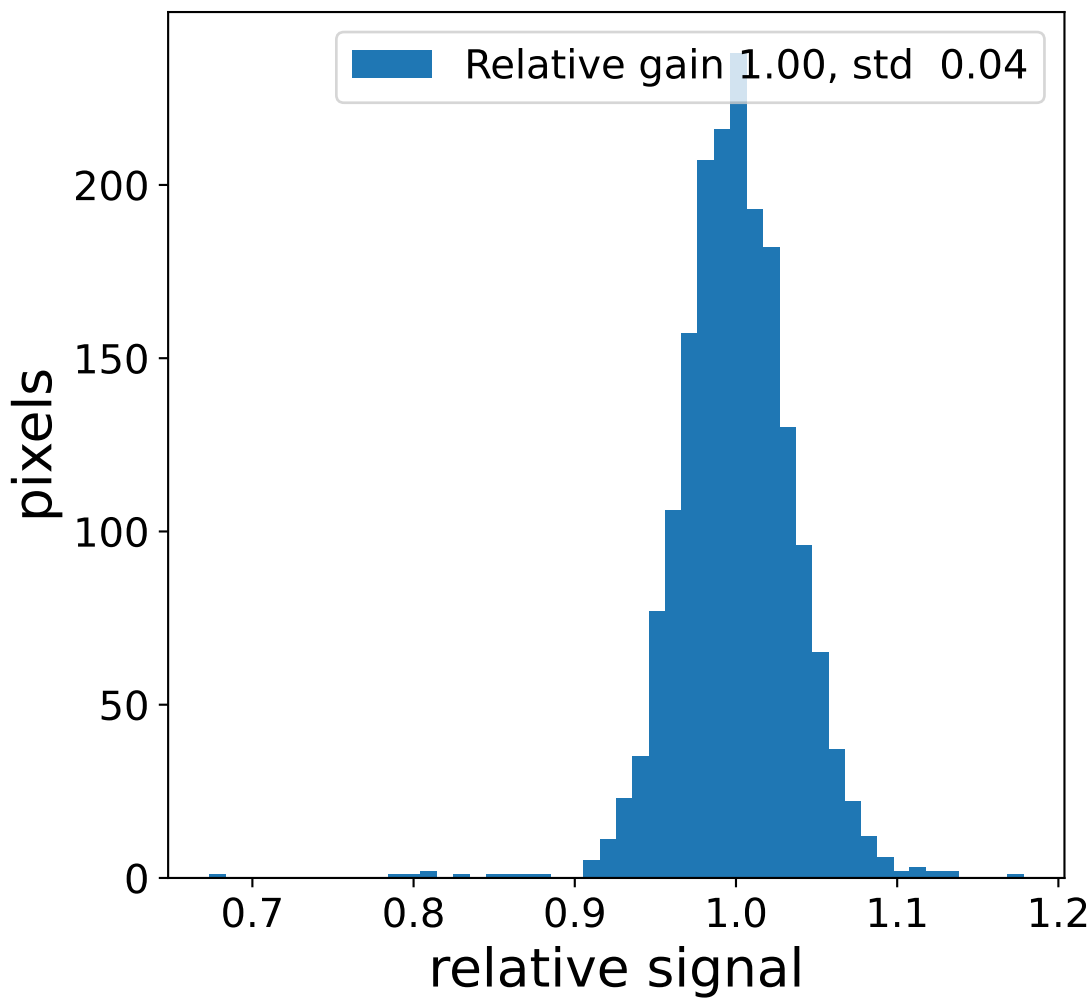
### FF sample of 10000 events



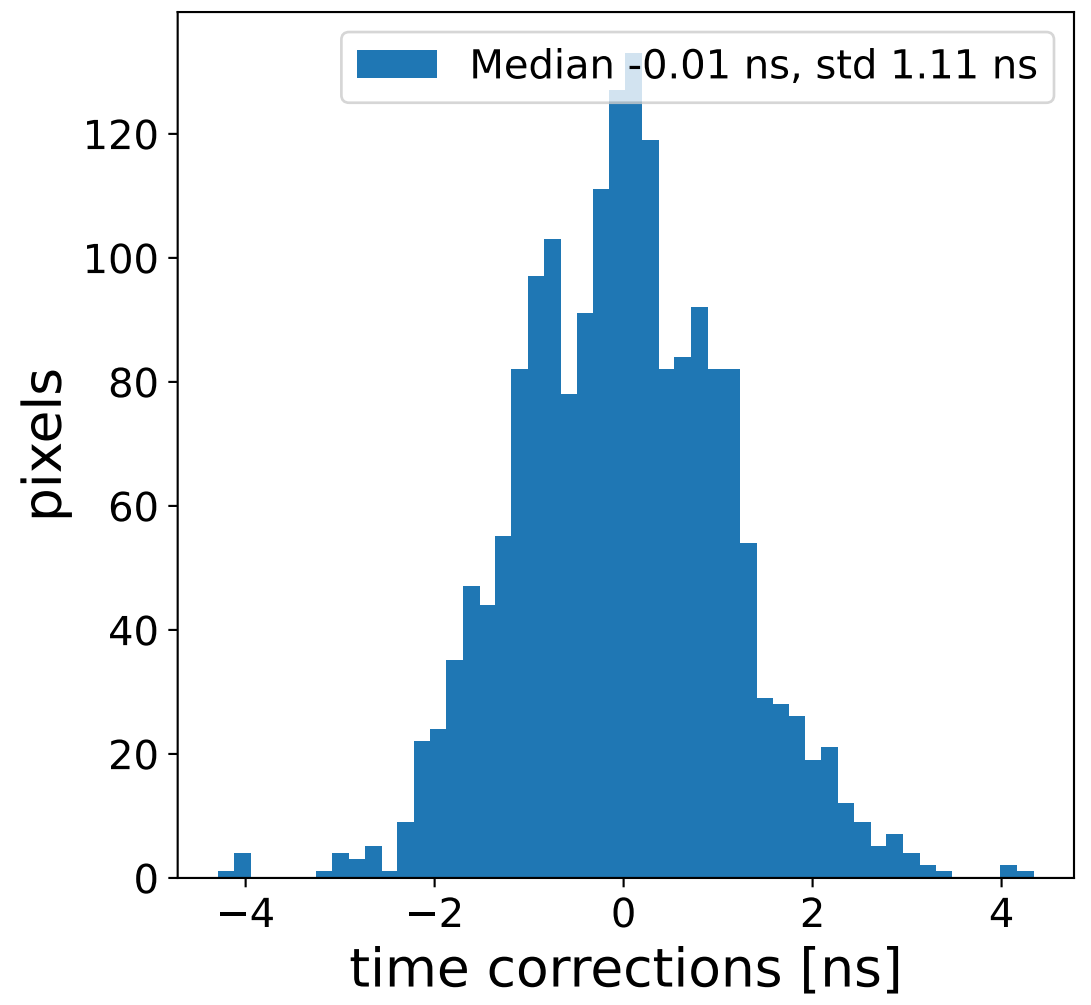
### pedestal sample of 10000 events



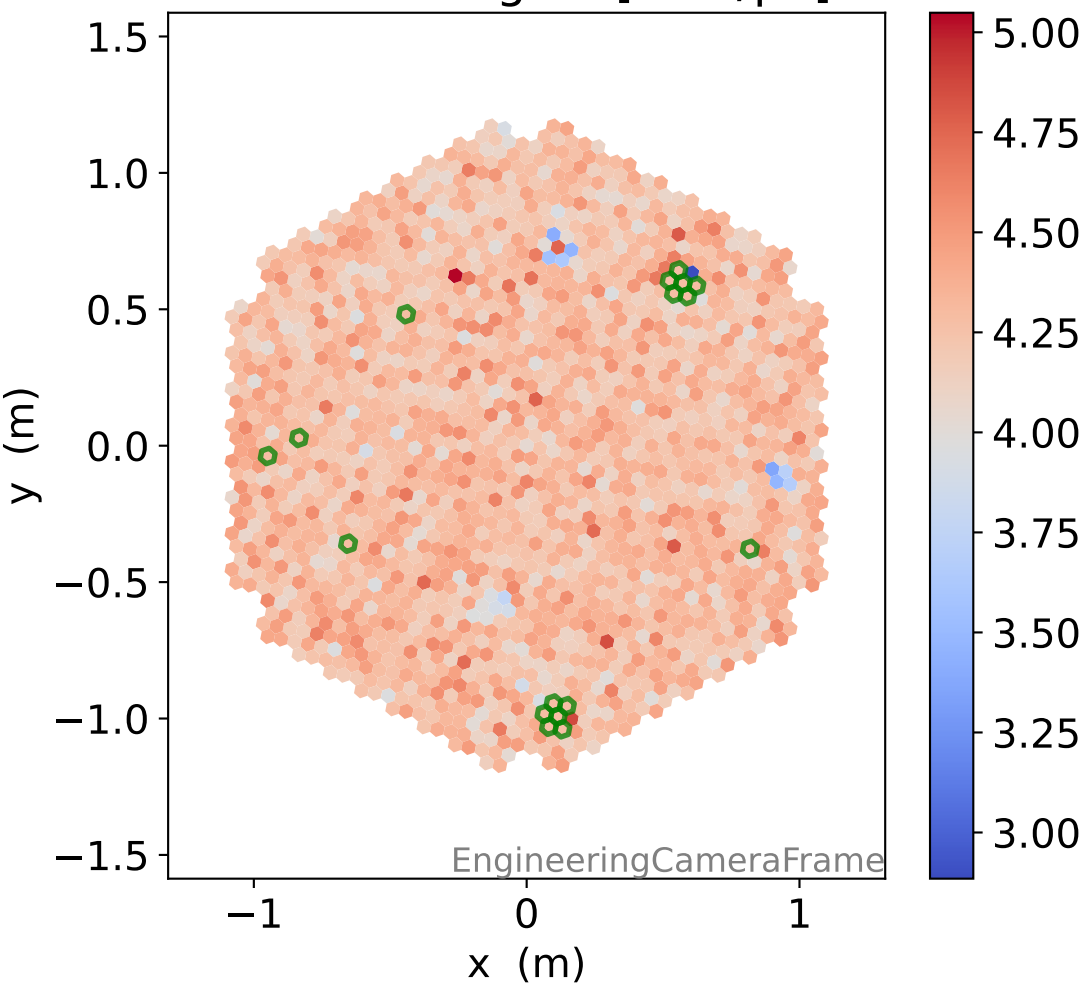
### Relative gain 1.00, std 0.04



### Median -0.01 ns, std 1.11 ns



### flat-fielded gain [ADC/pe]



### Median 4.28, std 0.15

