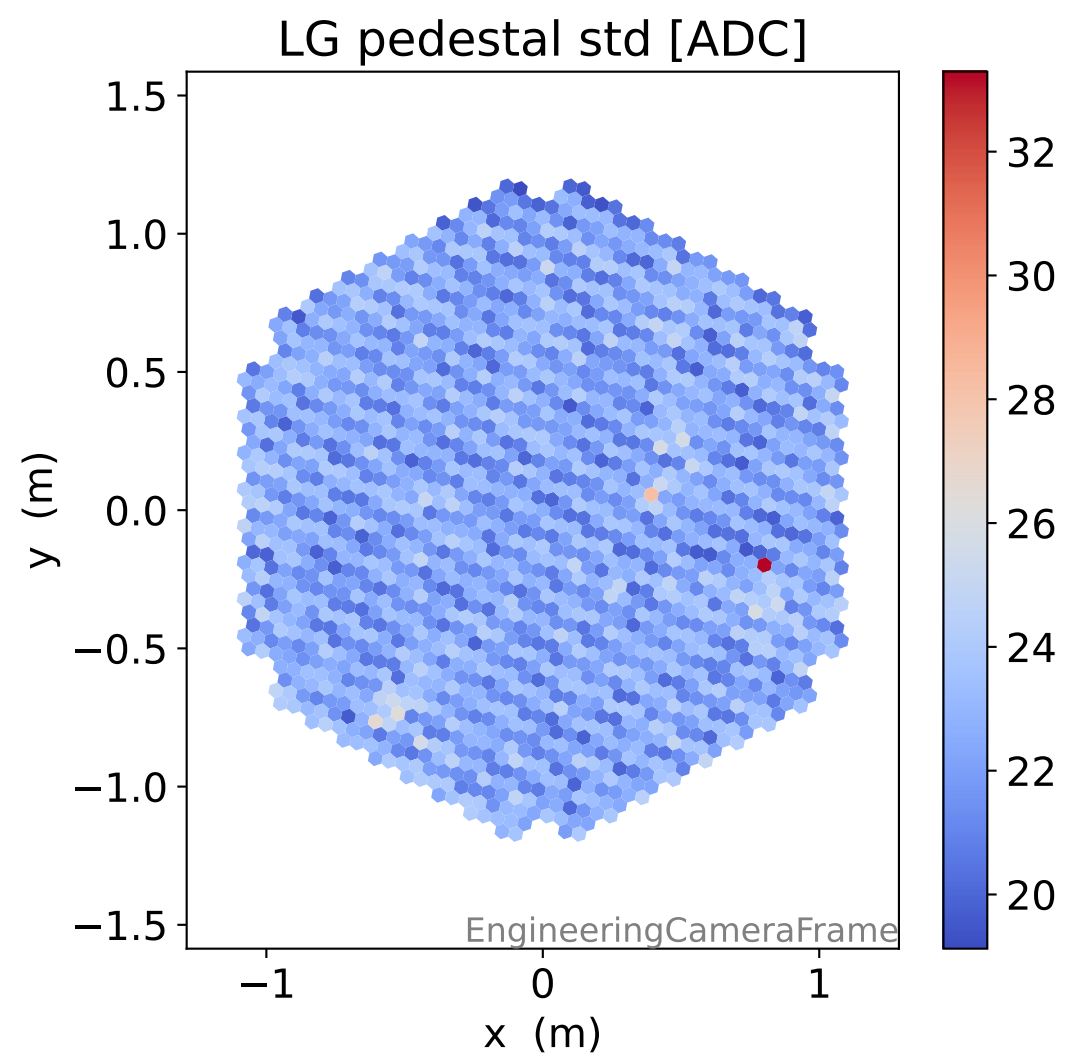
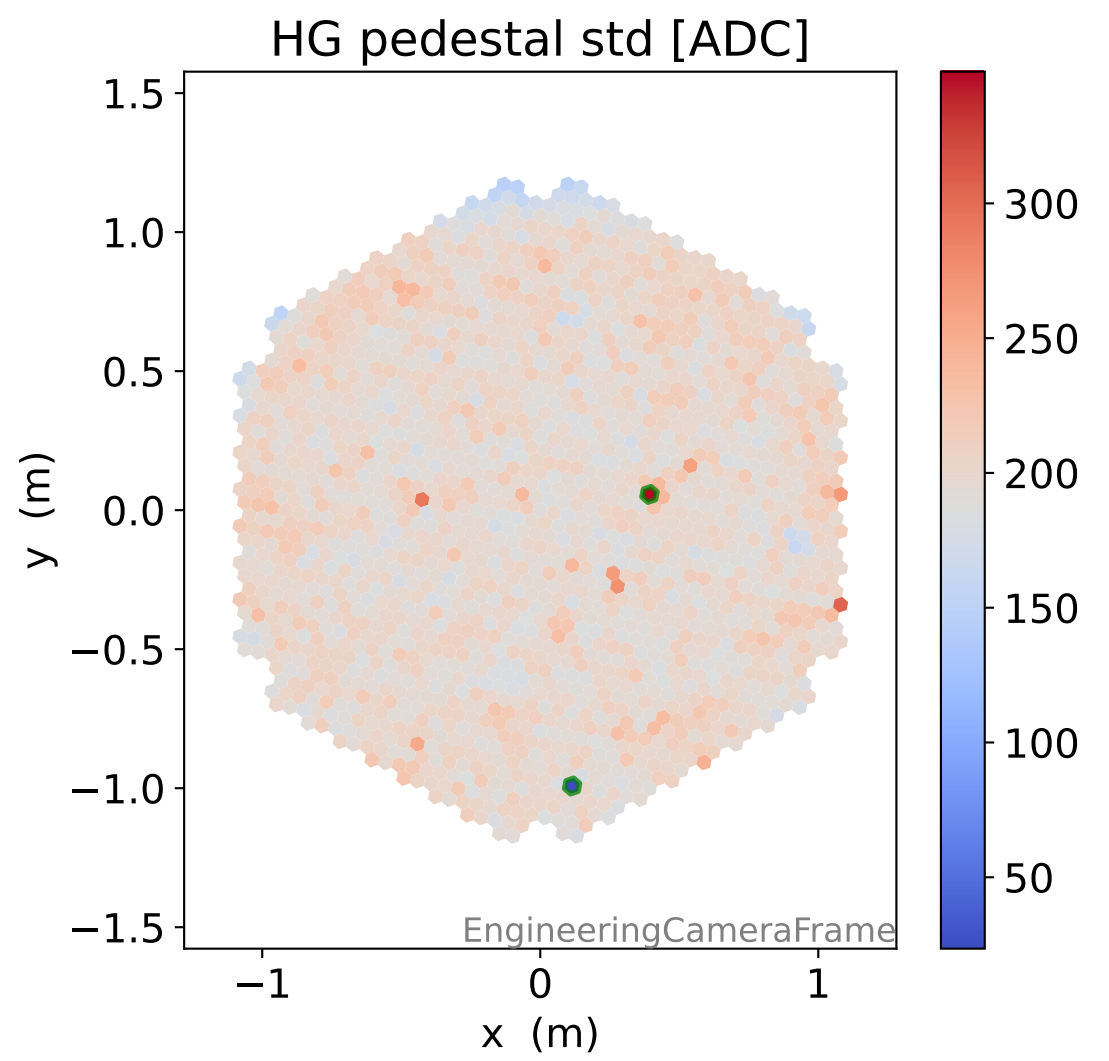
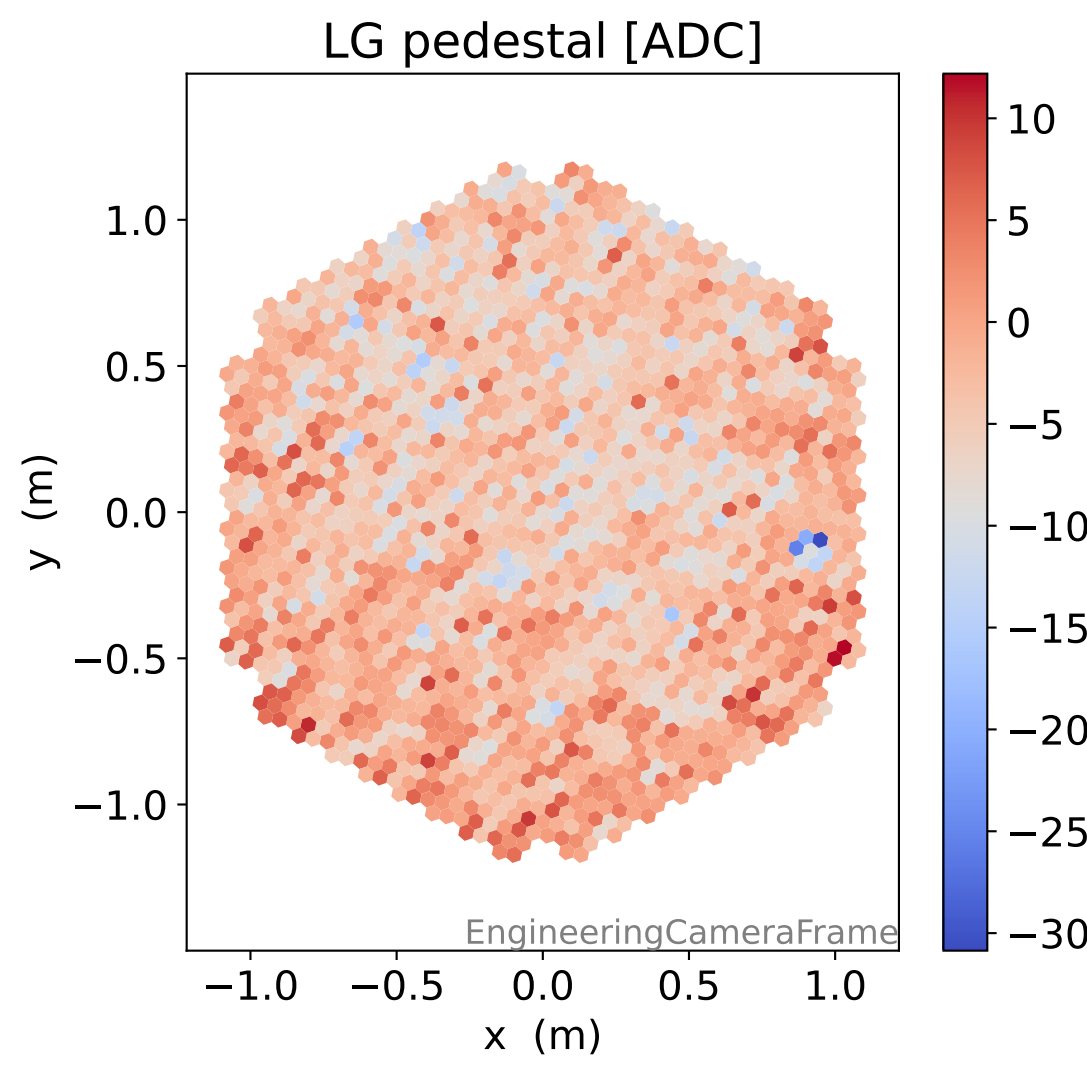
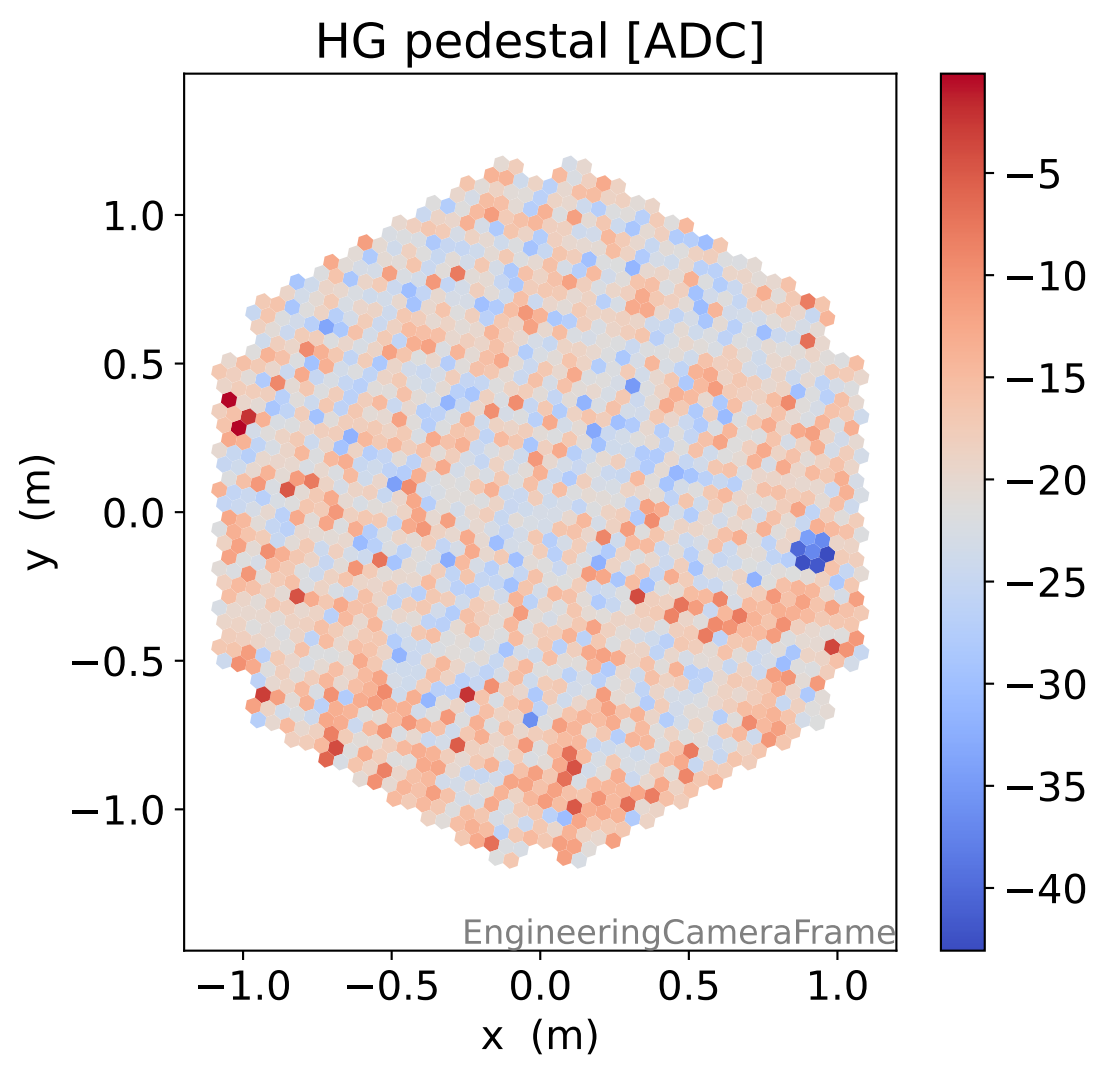
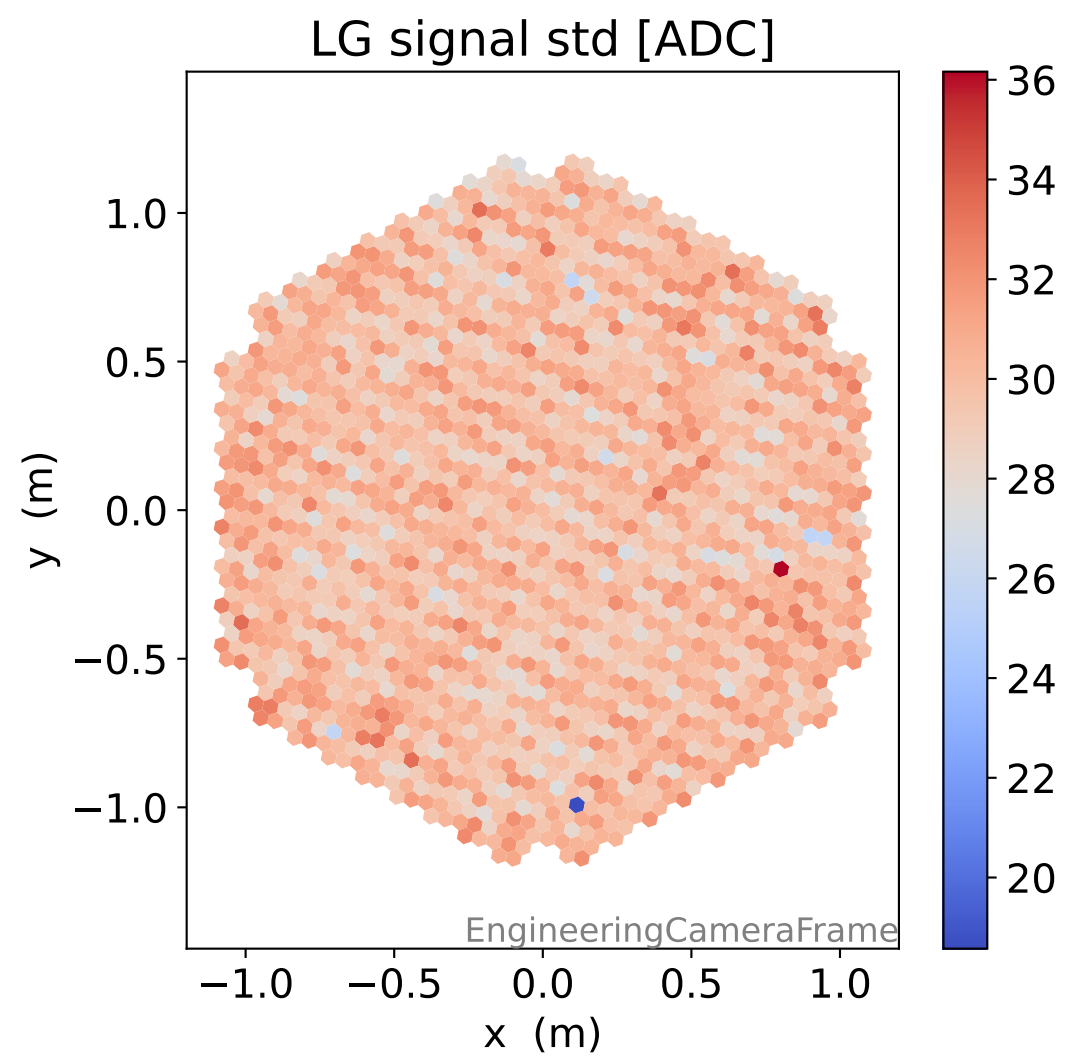
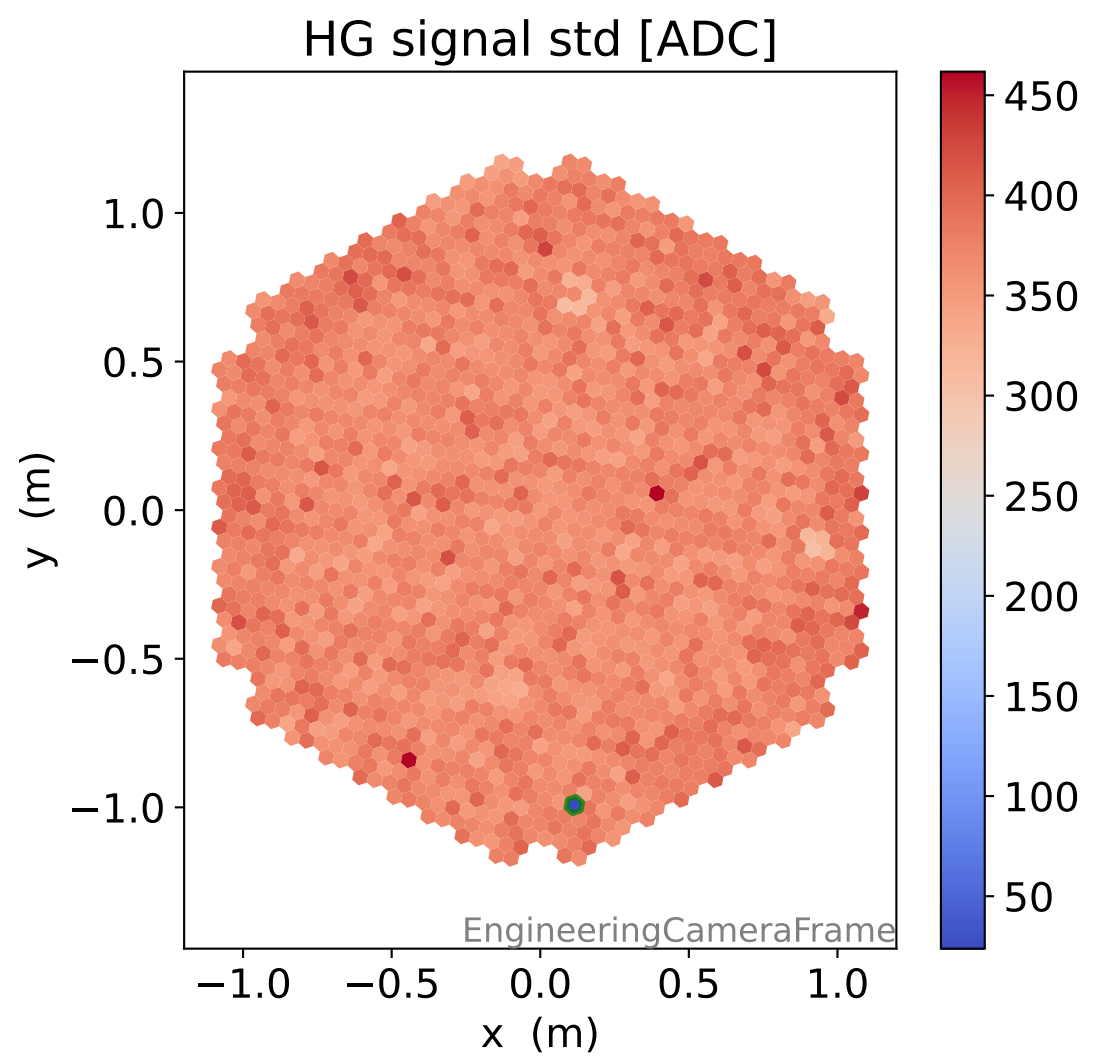
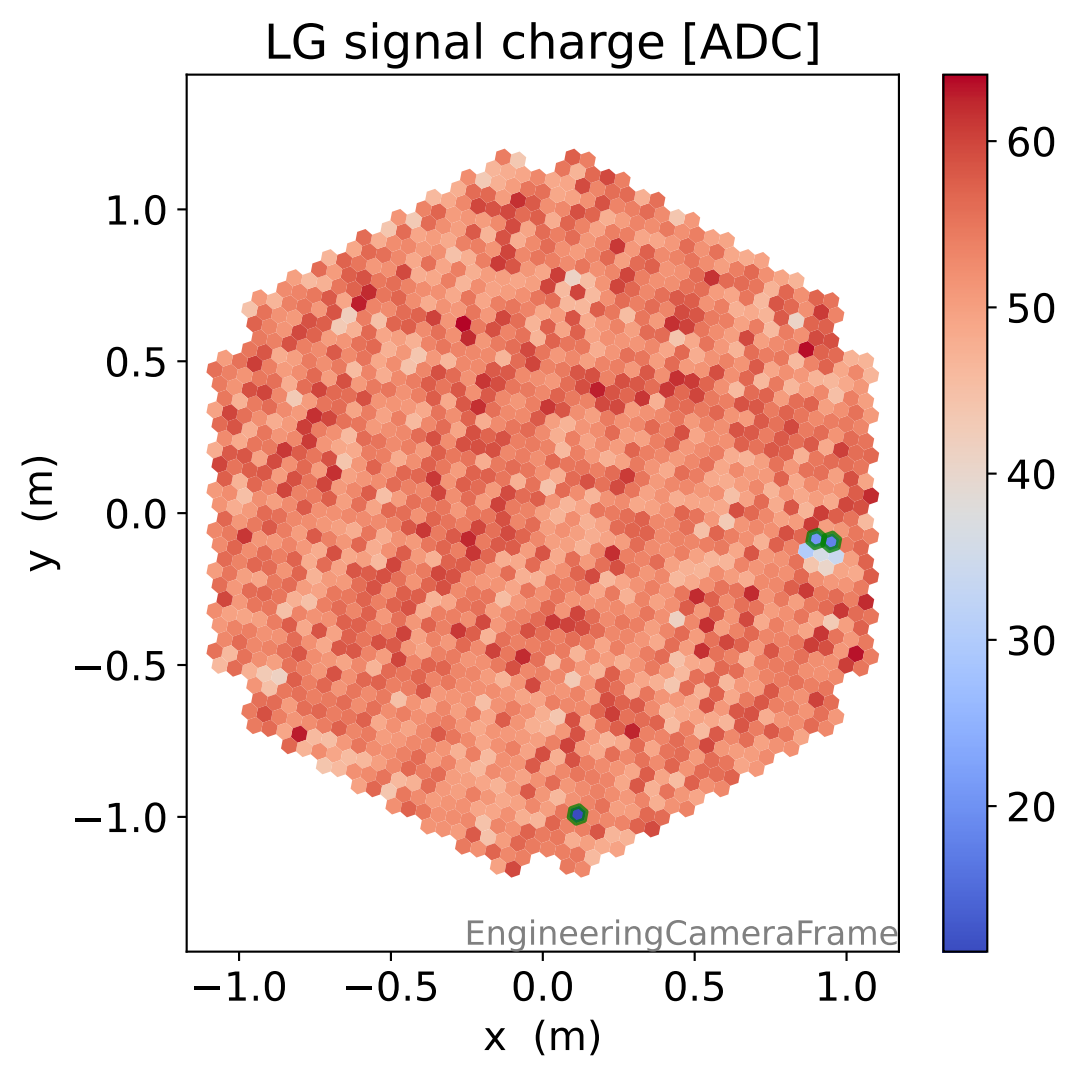
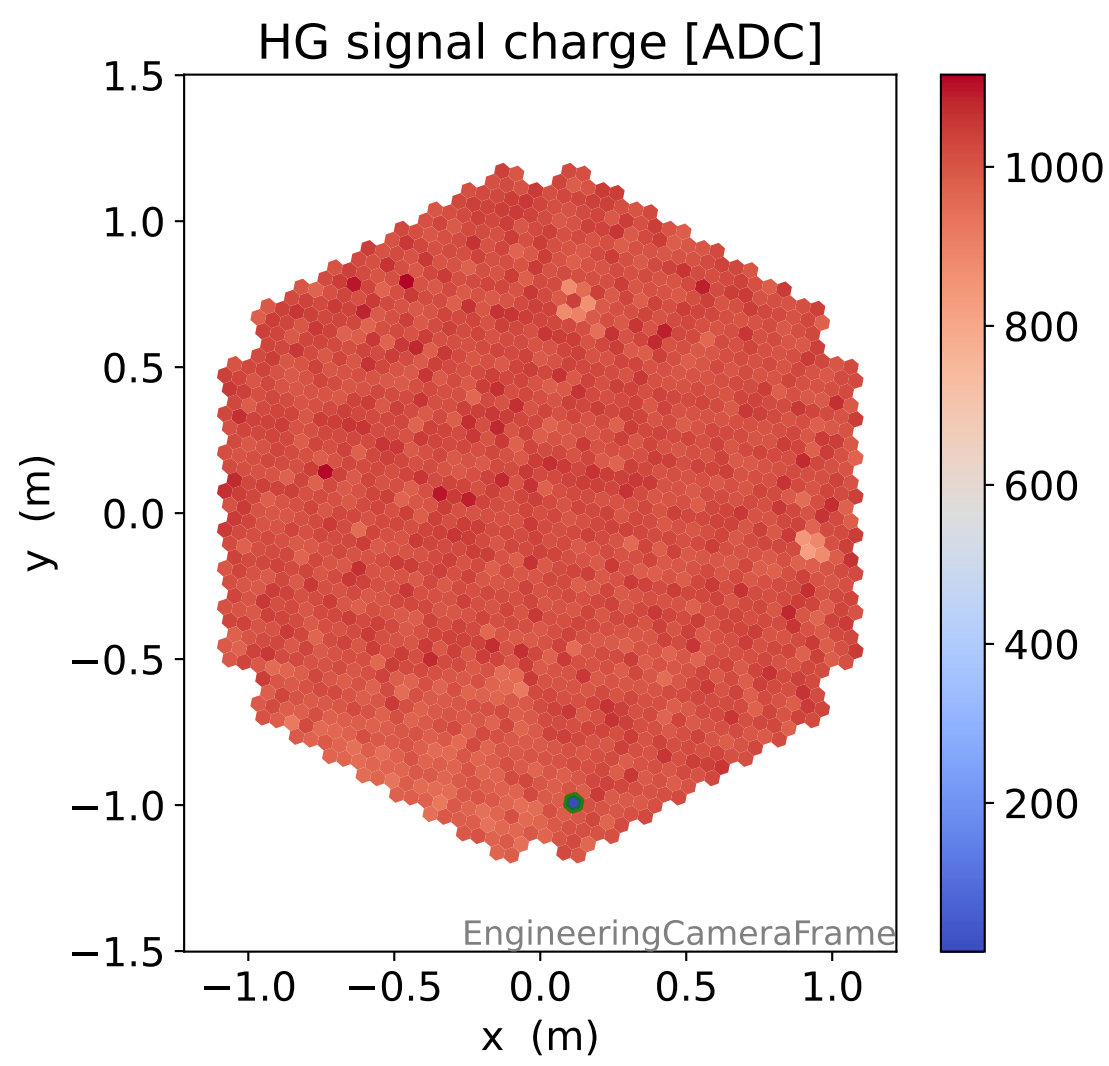
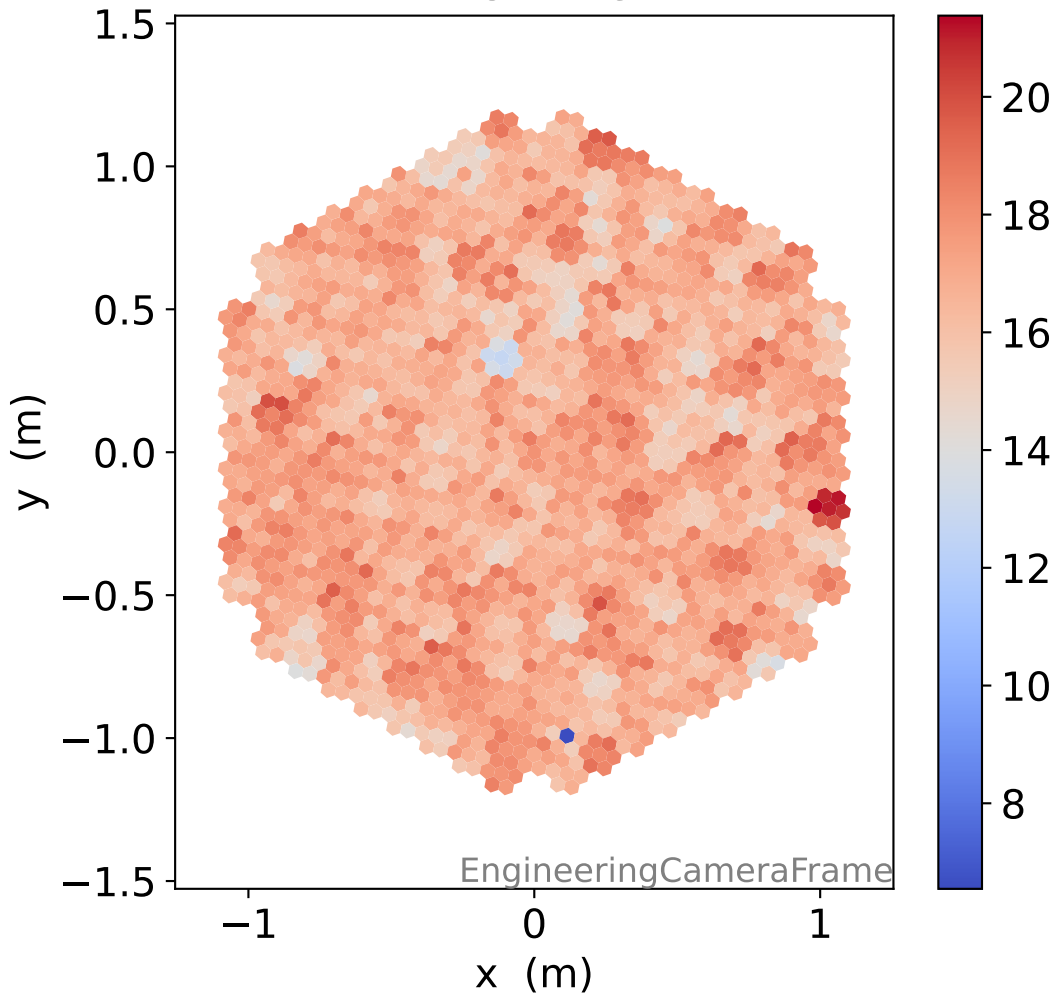


Run 4772

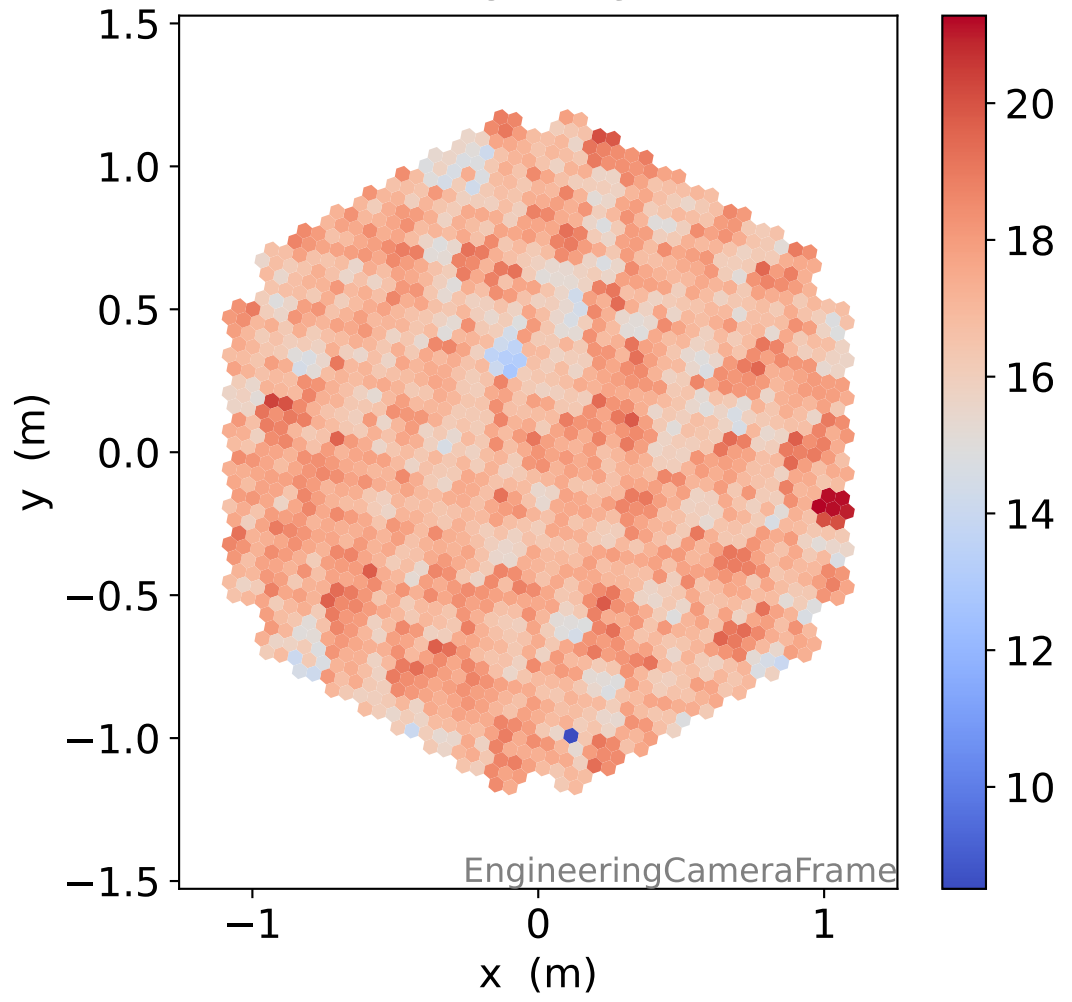


Run 4772

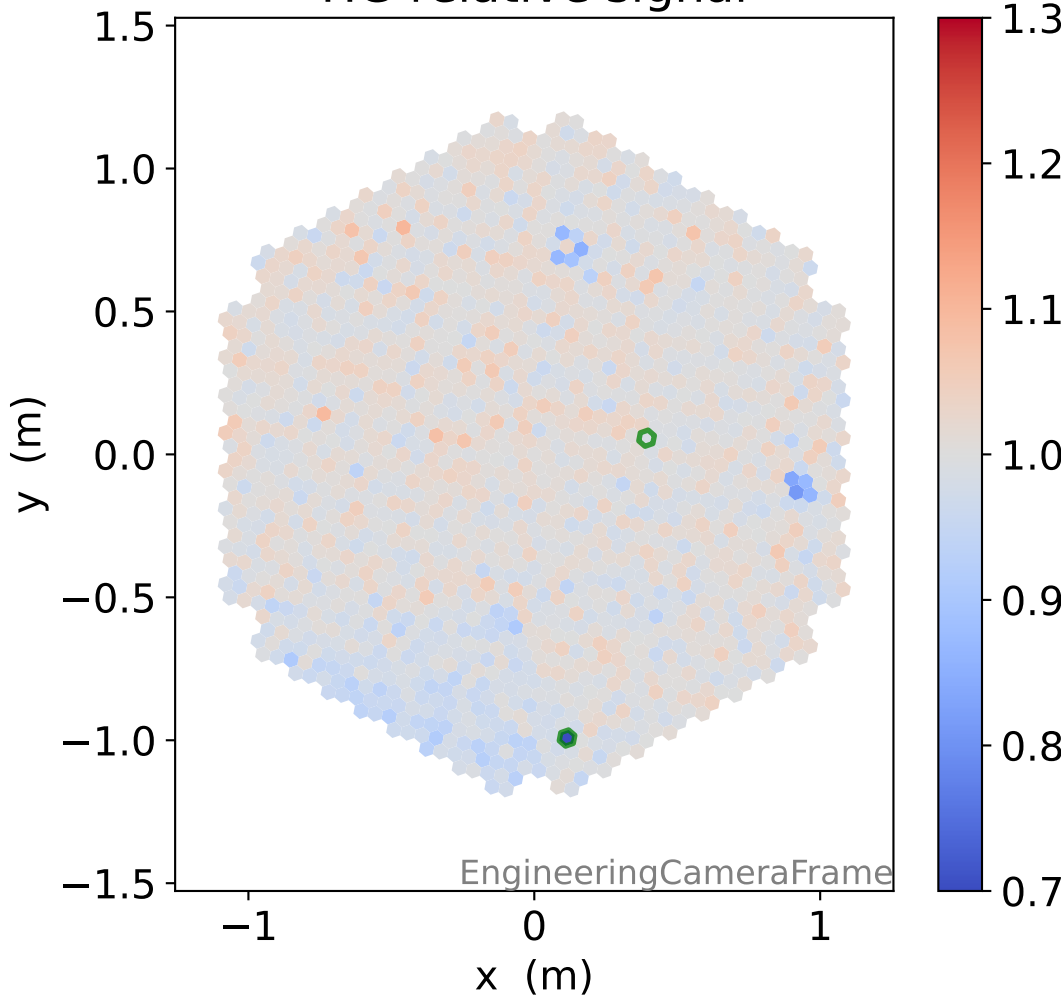
HG time



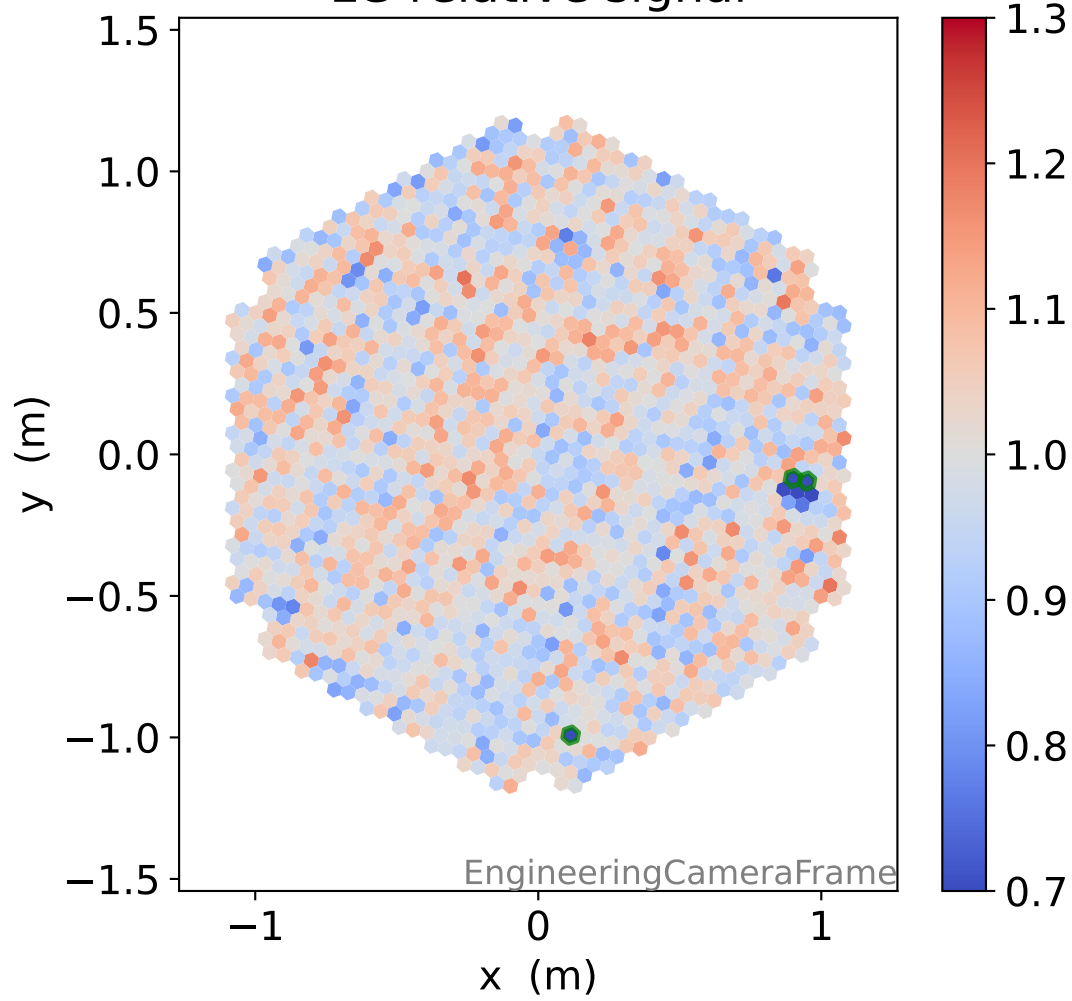
LG time



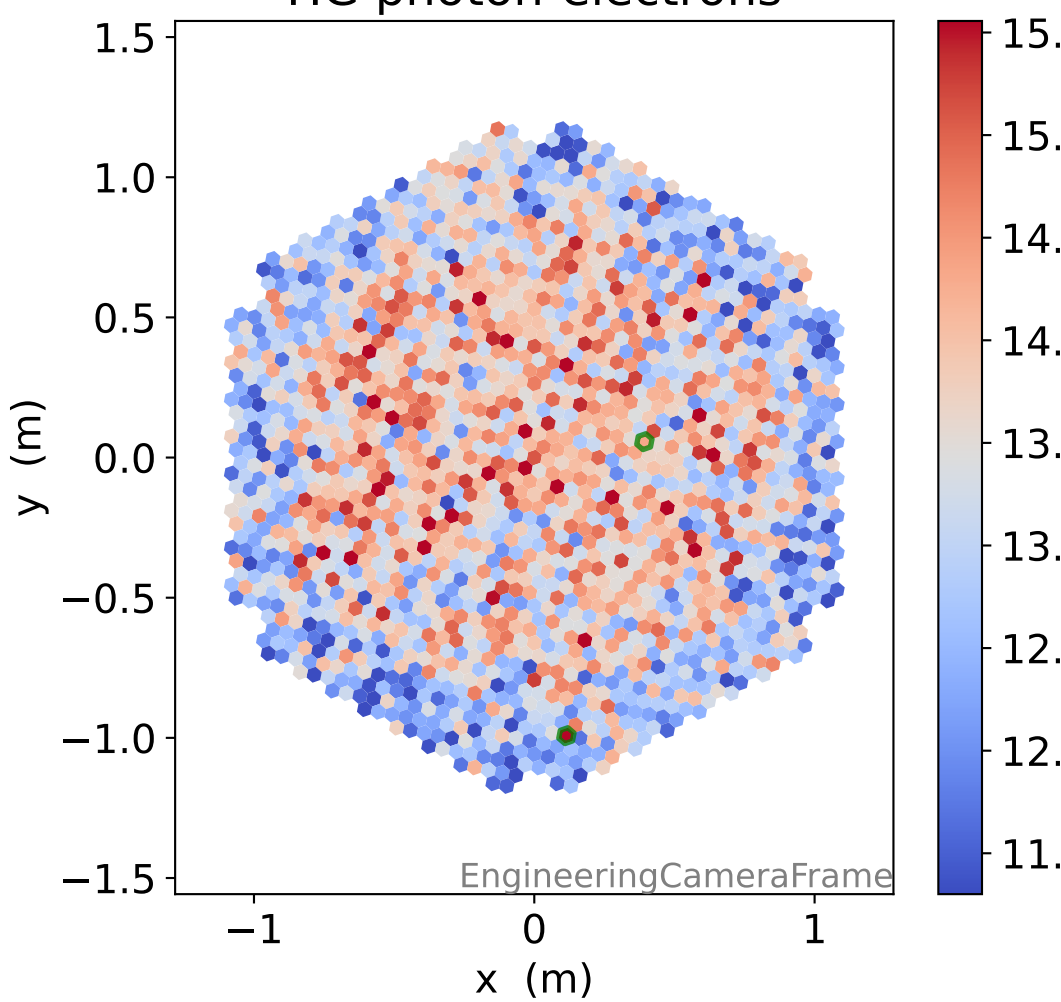
HG relative signal



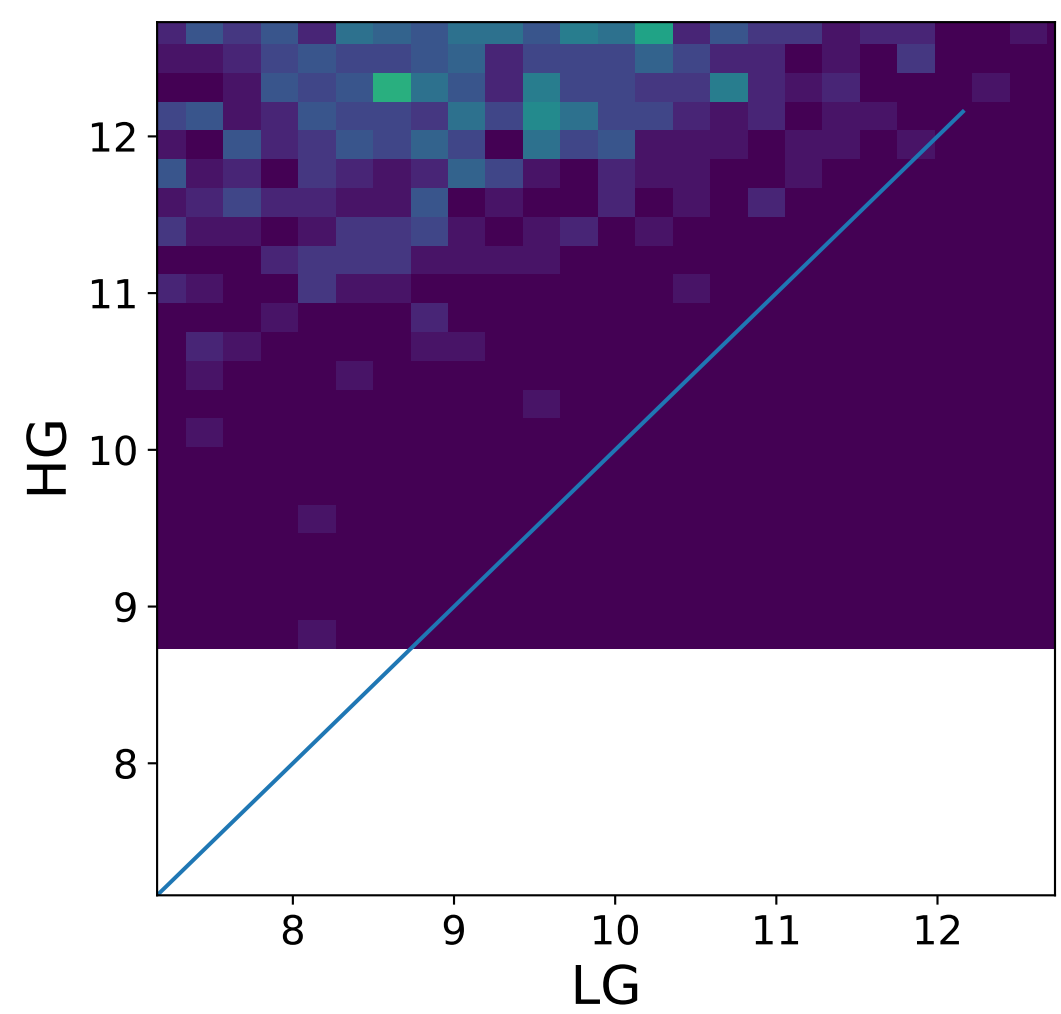
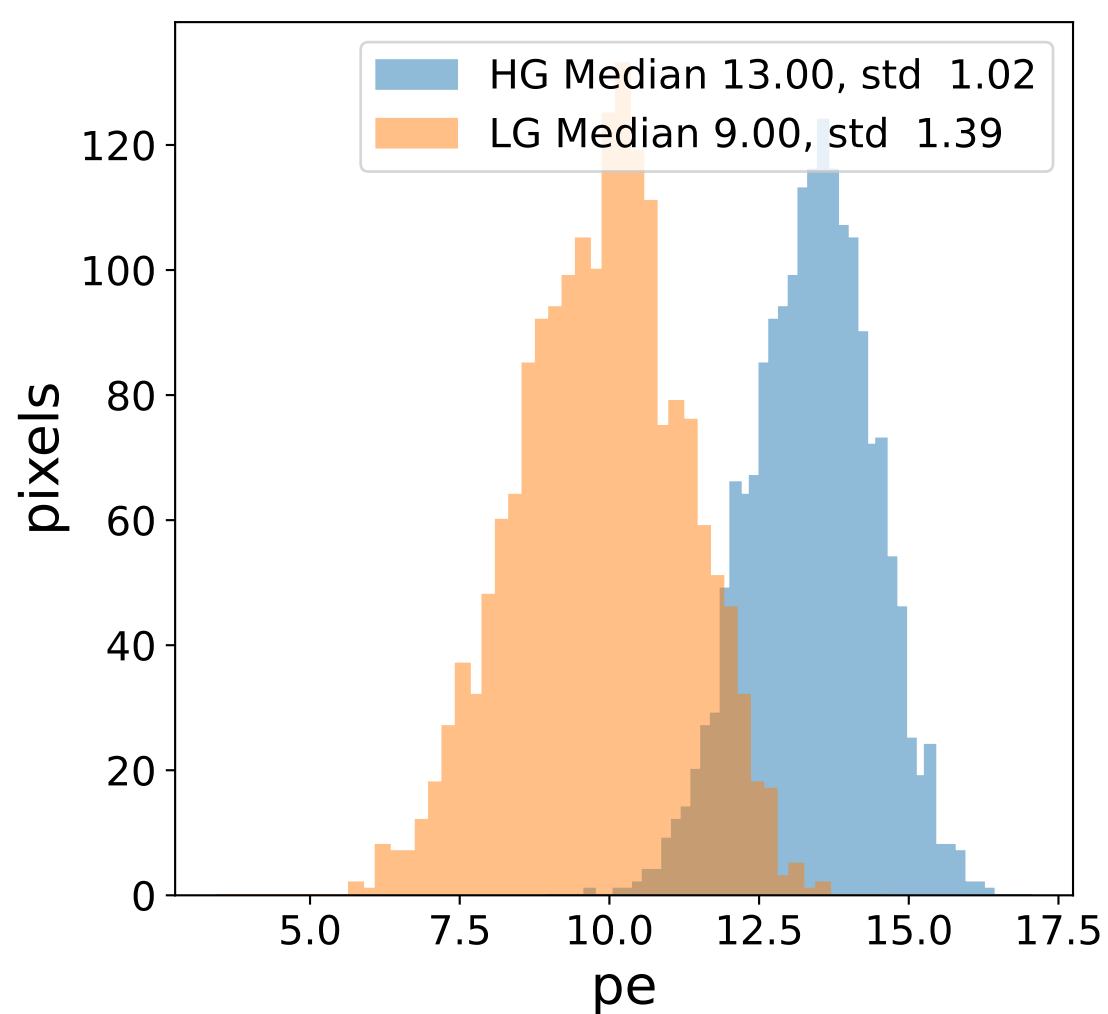
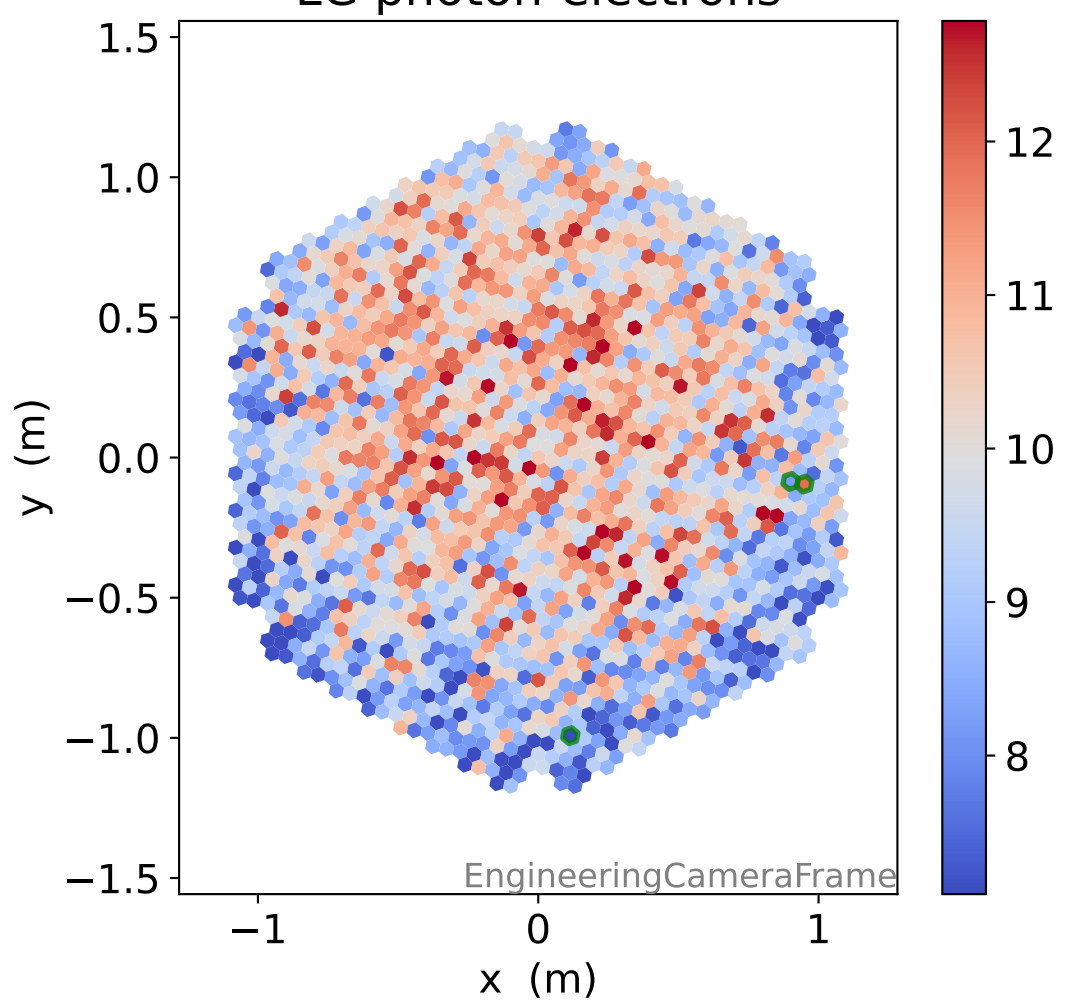
LG relative signal



HG photon-electrons

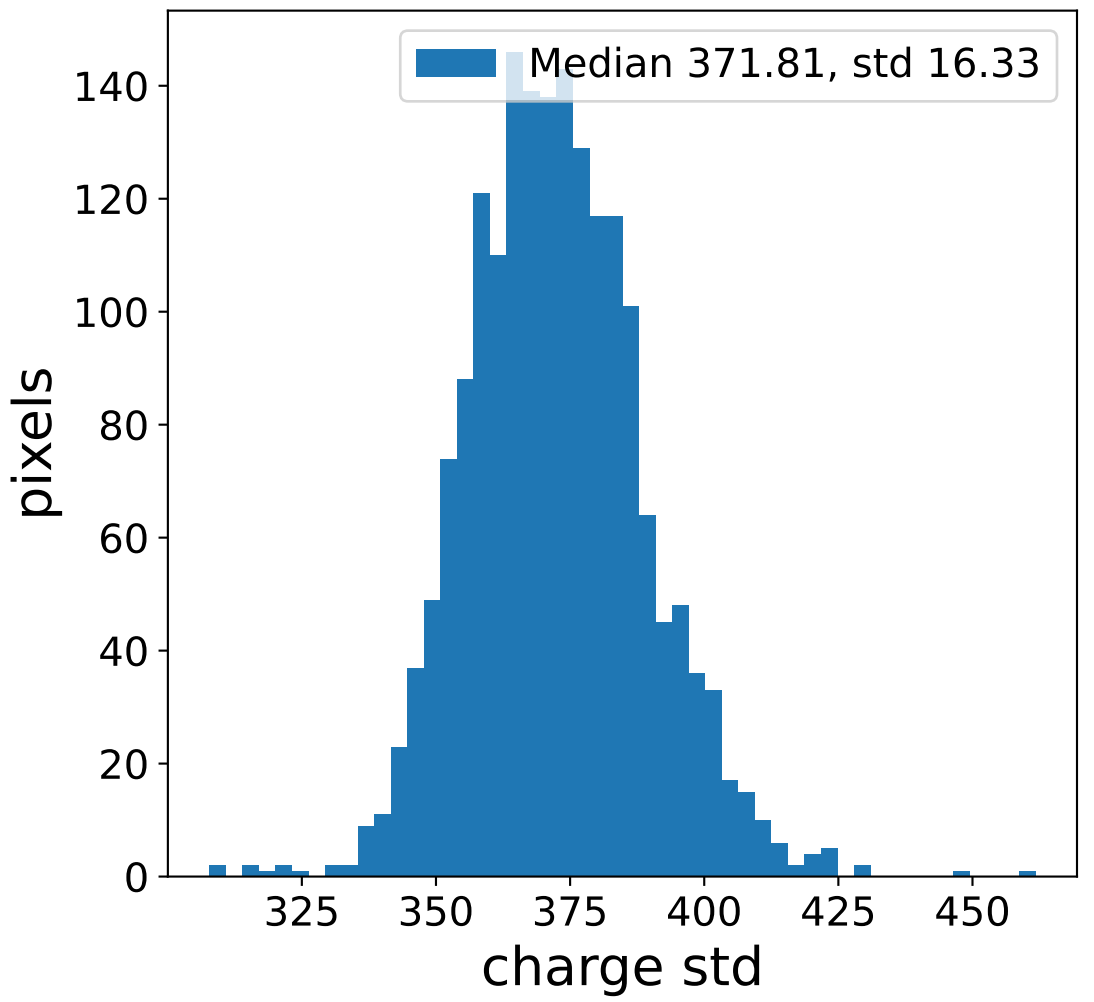
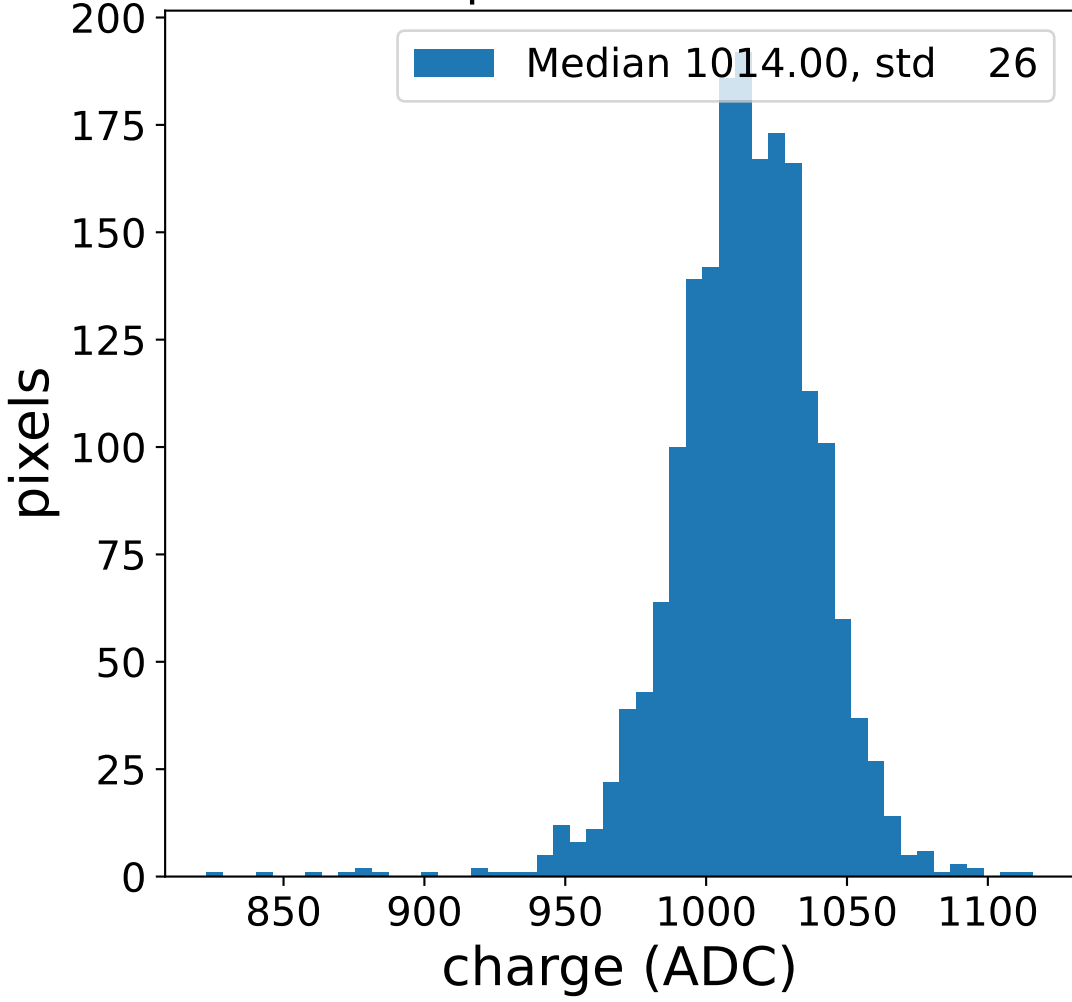


LG photon-electrons

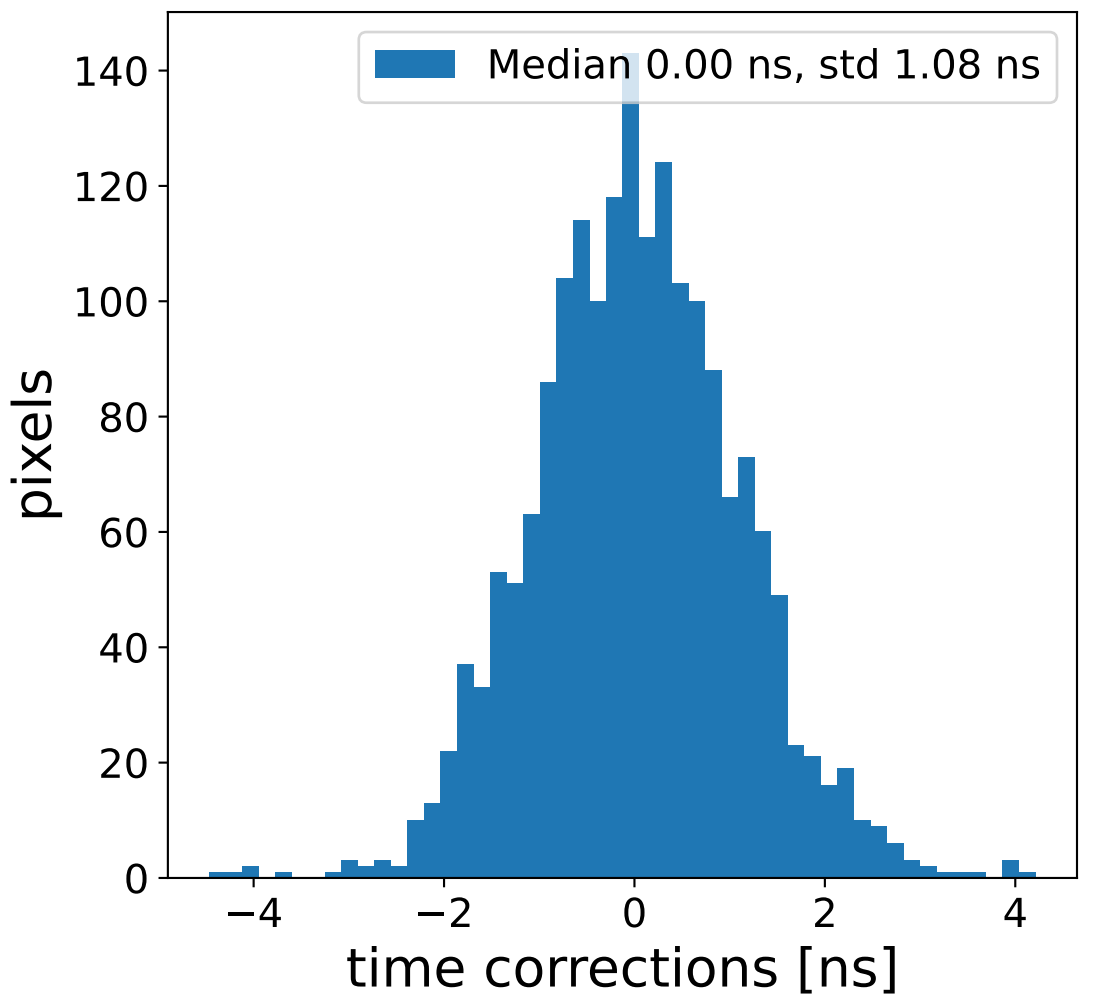
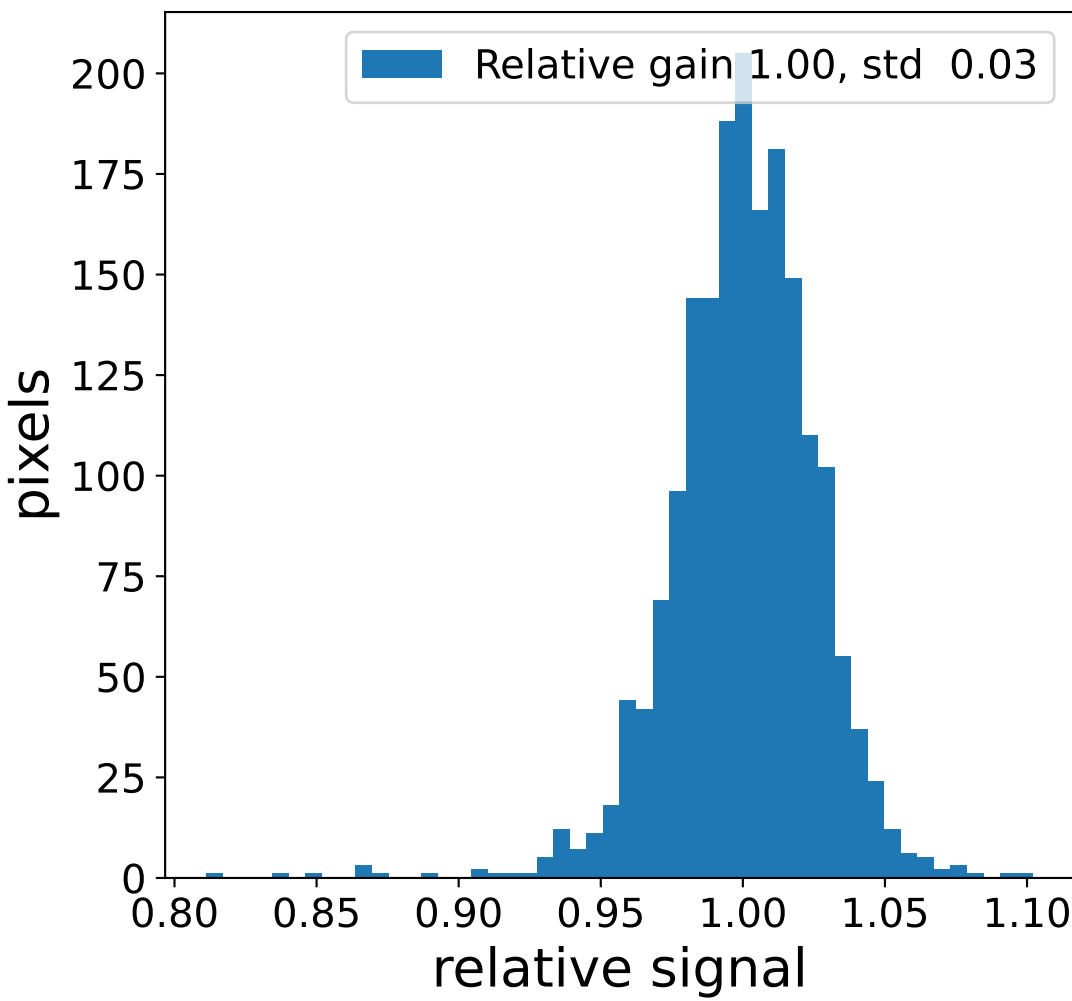
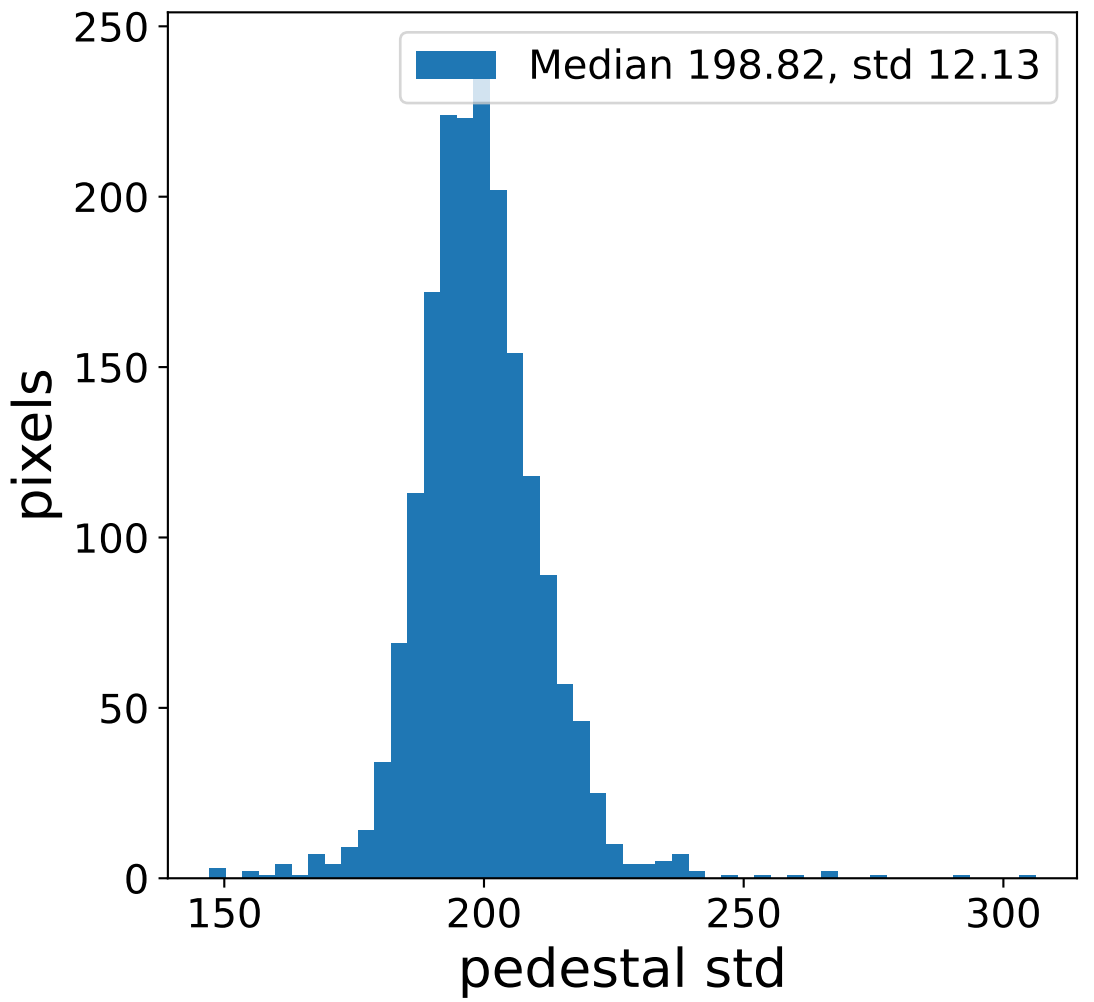
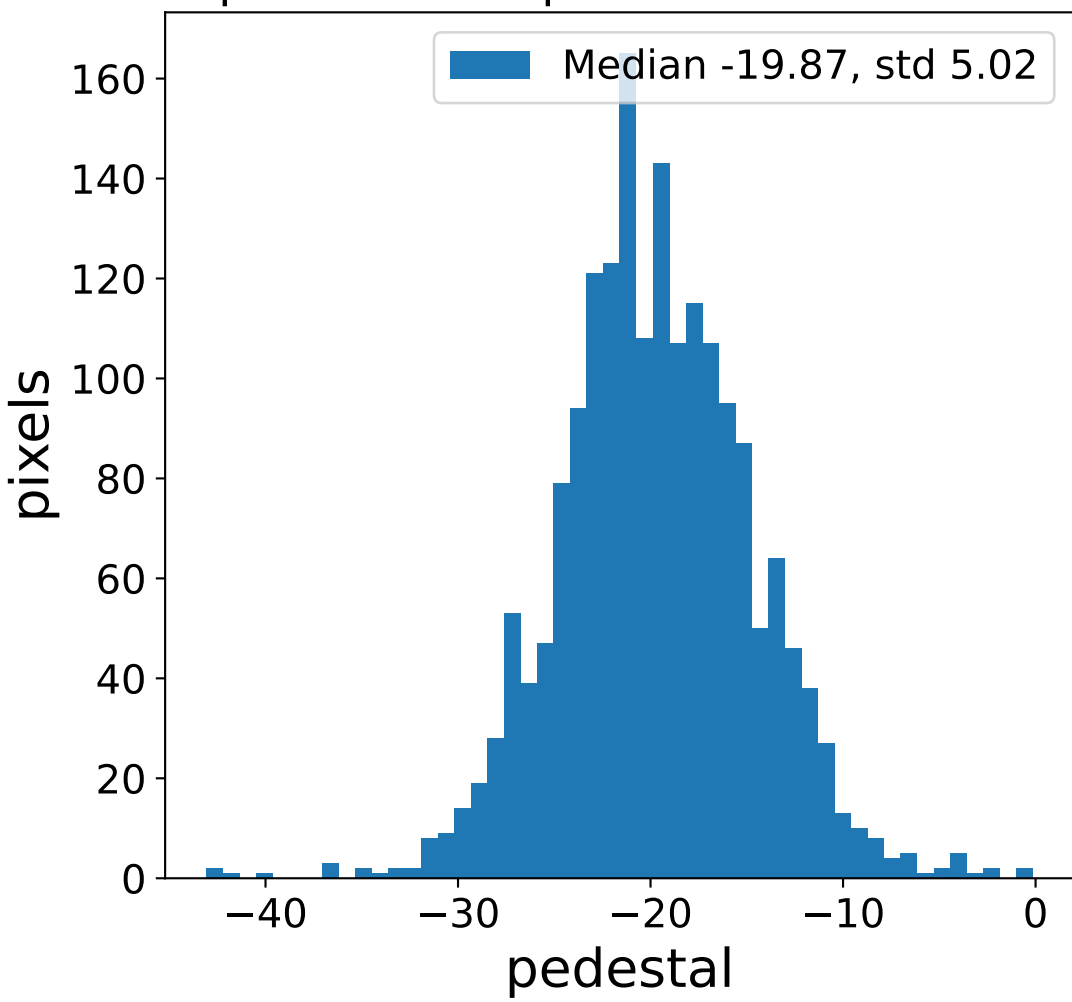


Run 4772 channel: HG

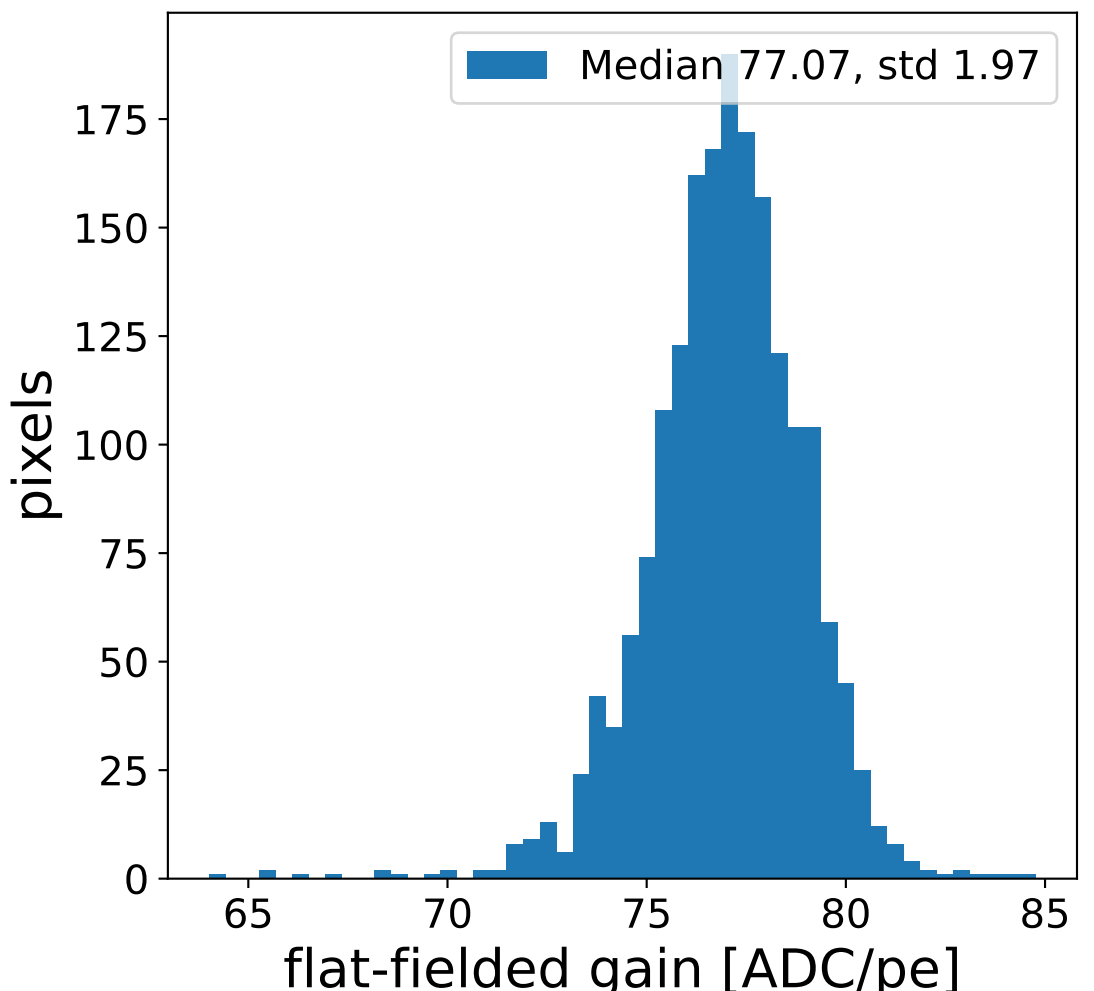
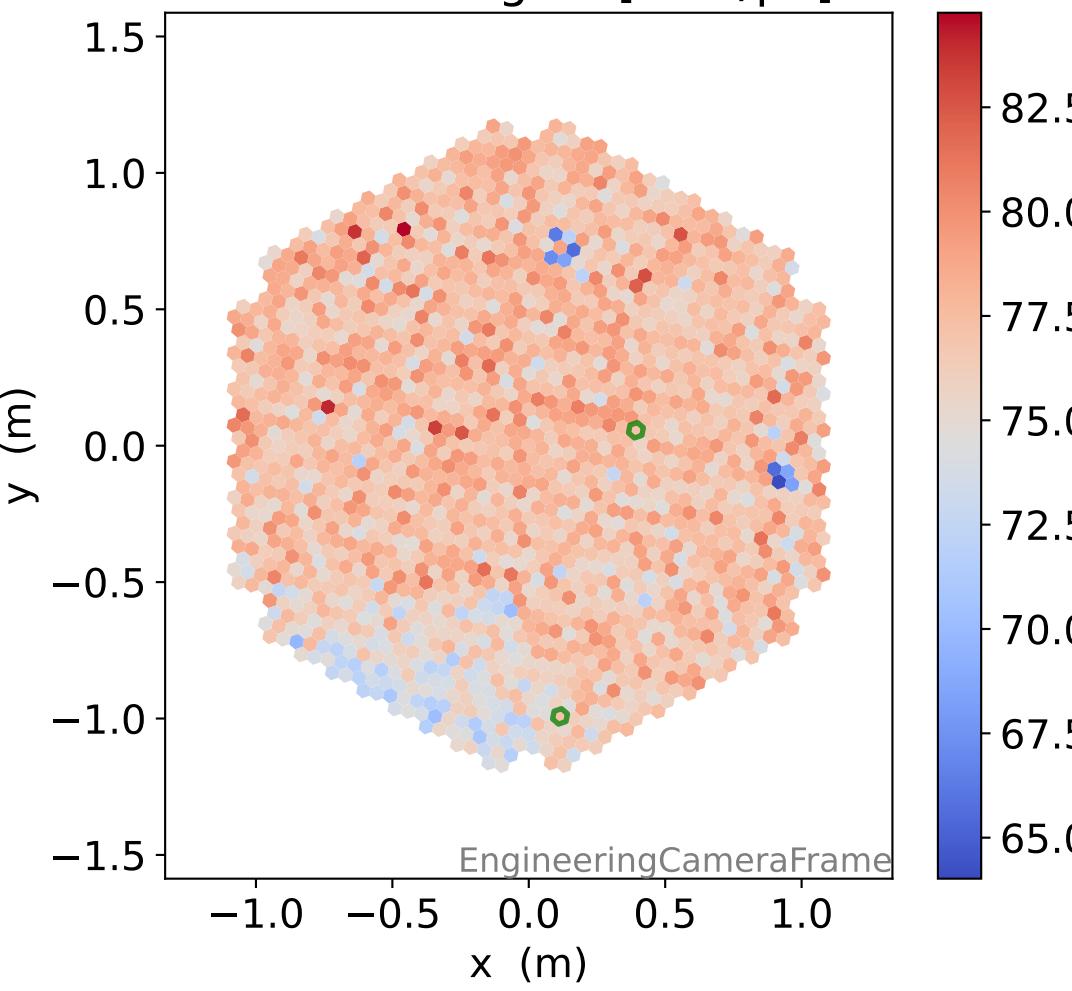
FF sample of 10000 events



pedestal sample of 10000 events

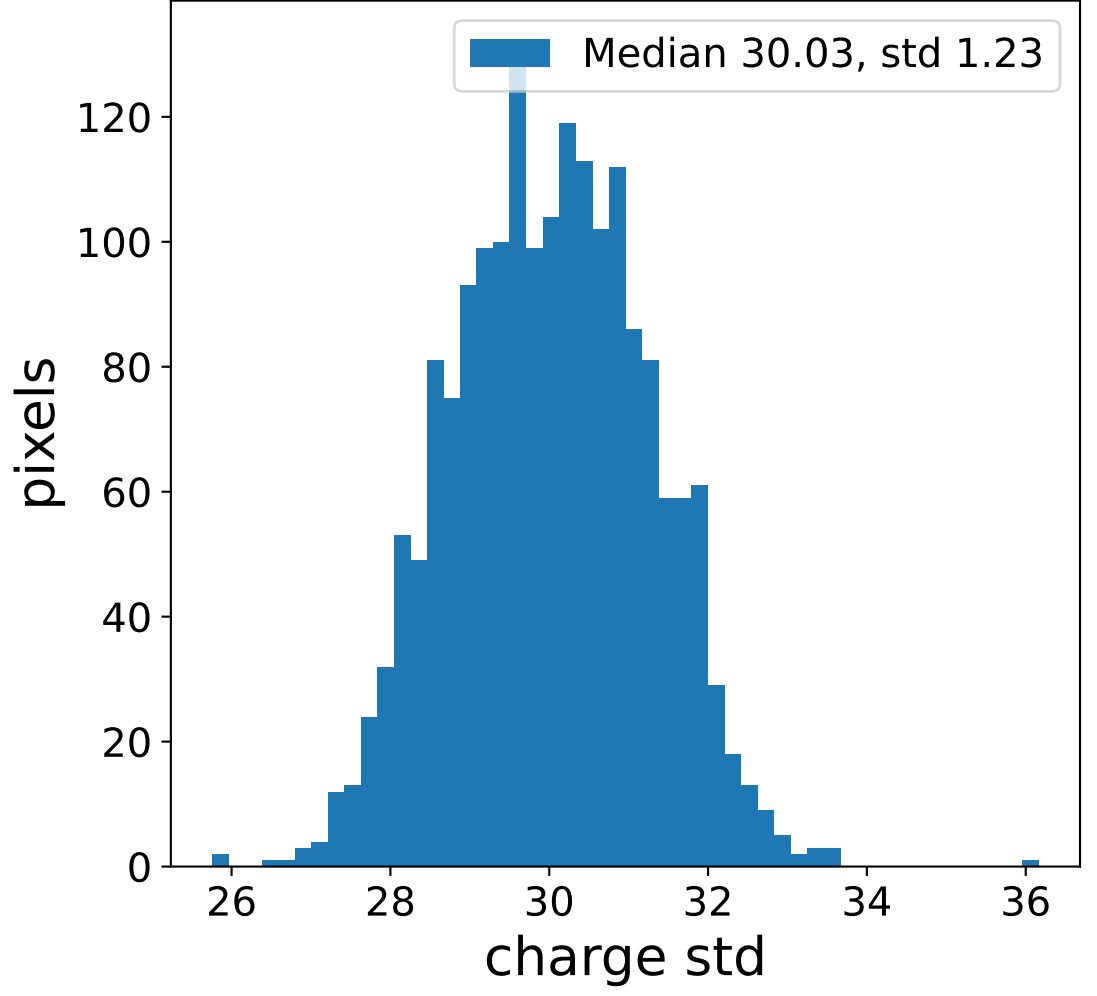
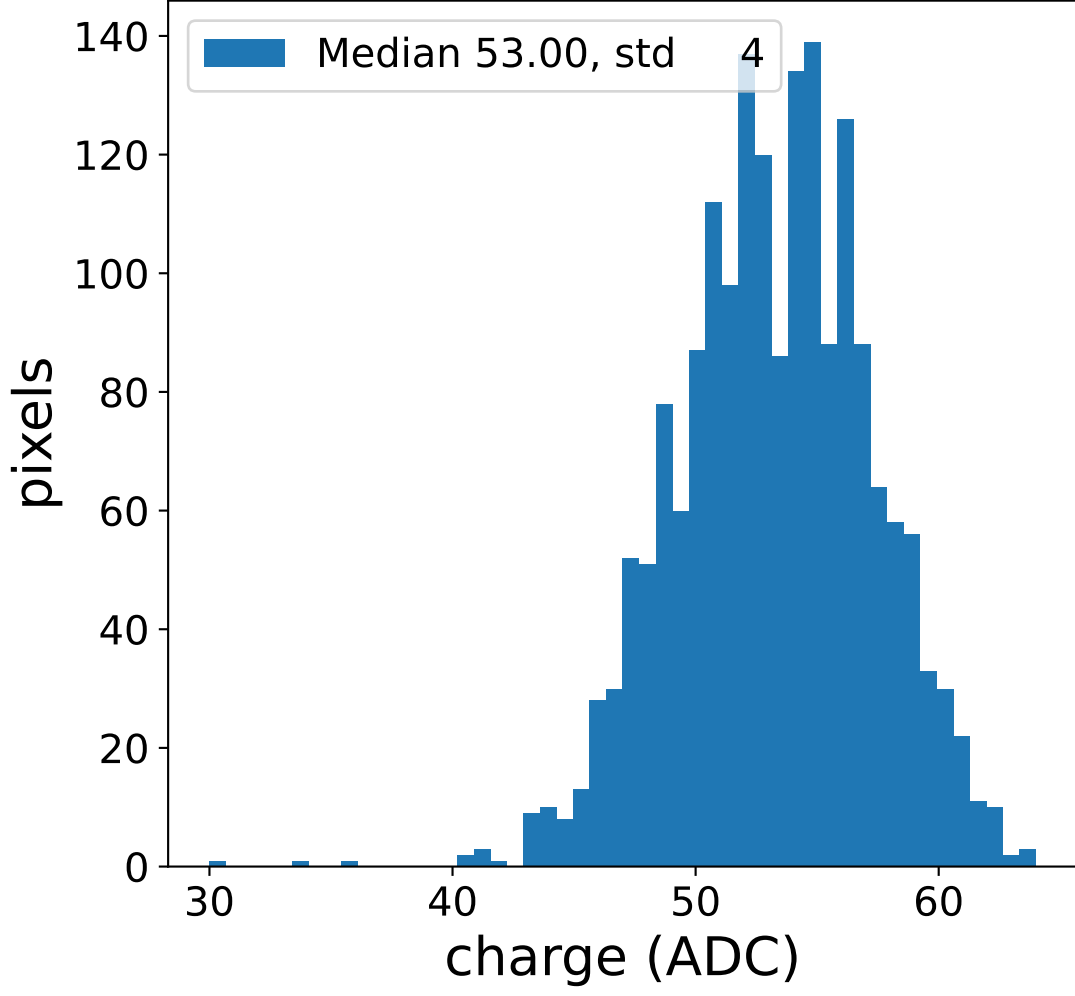


flat-fielded gain [ADC/pe]

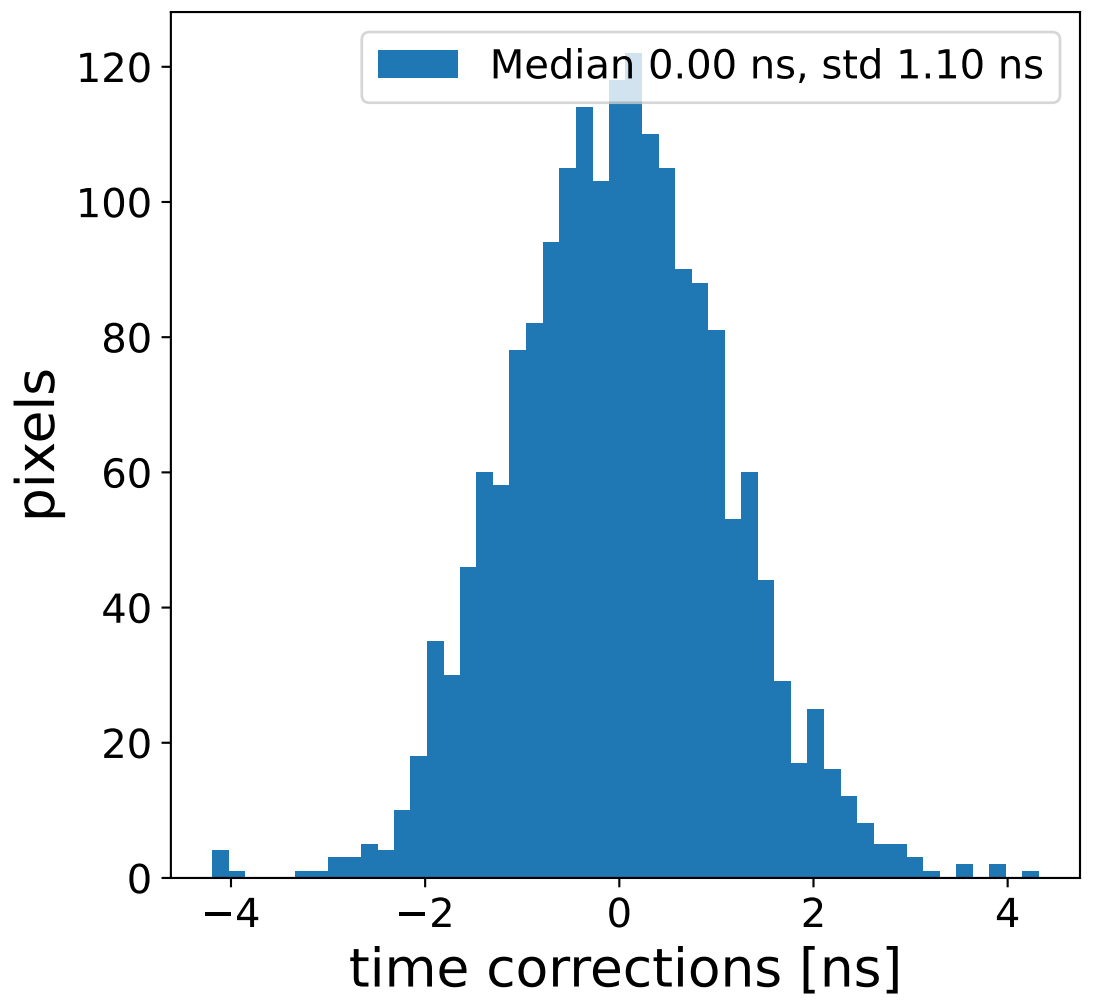
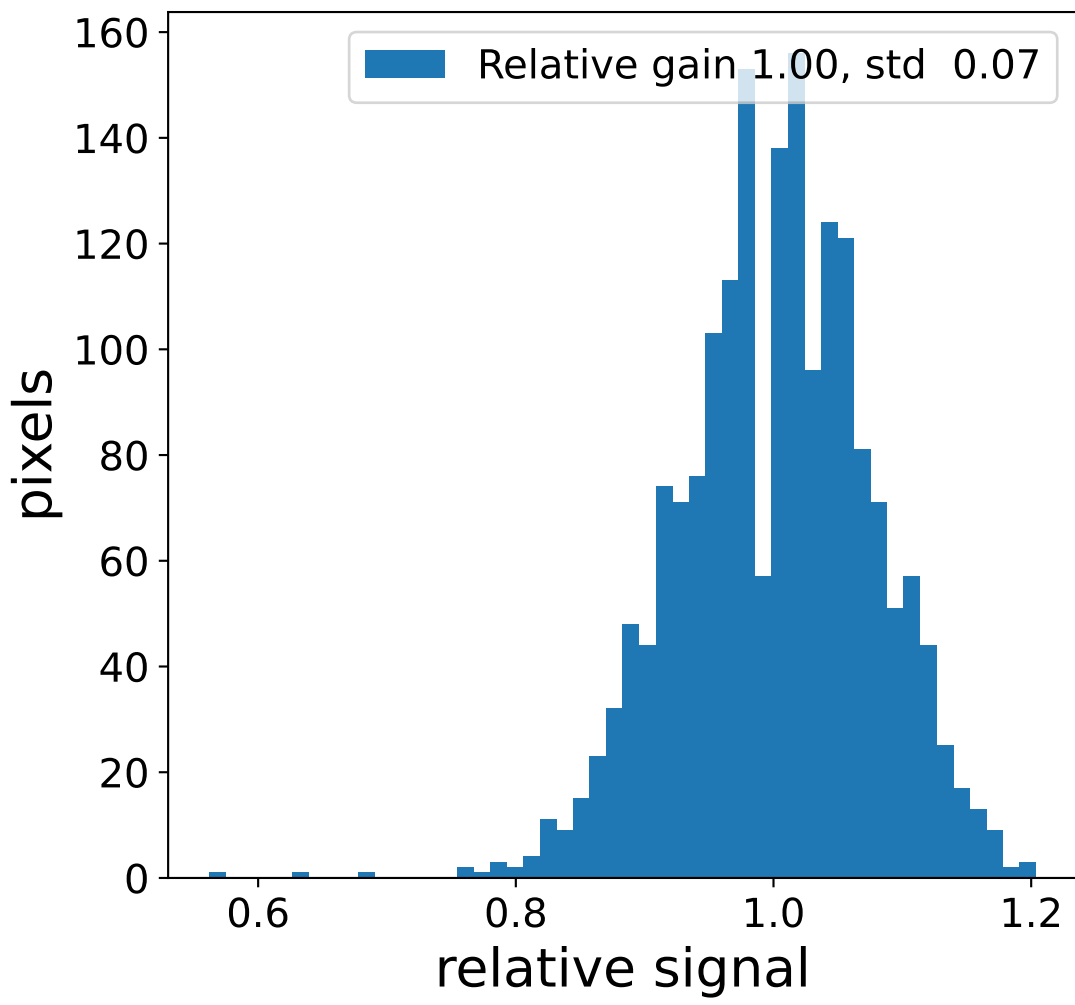
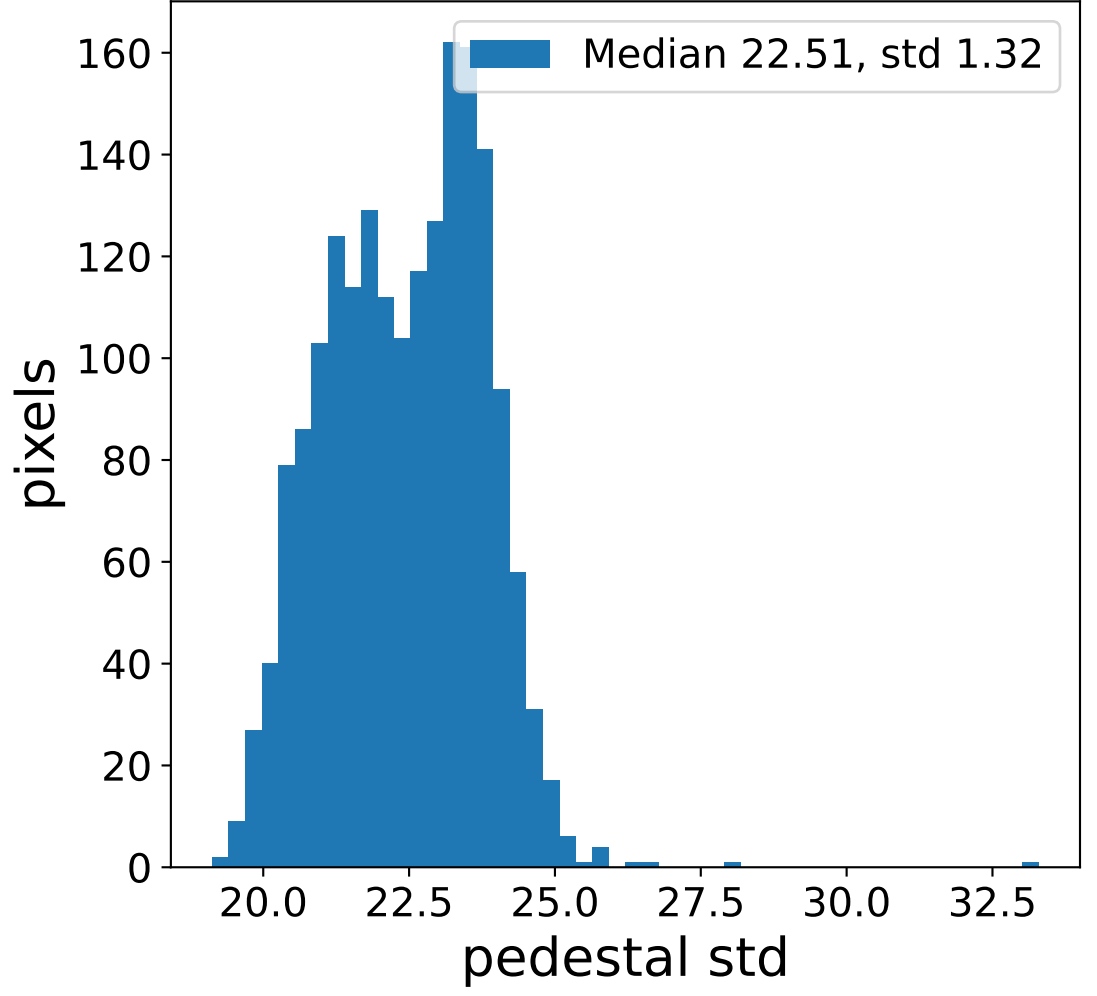
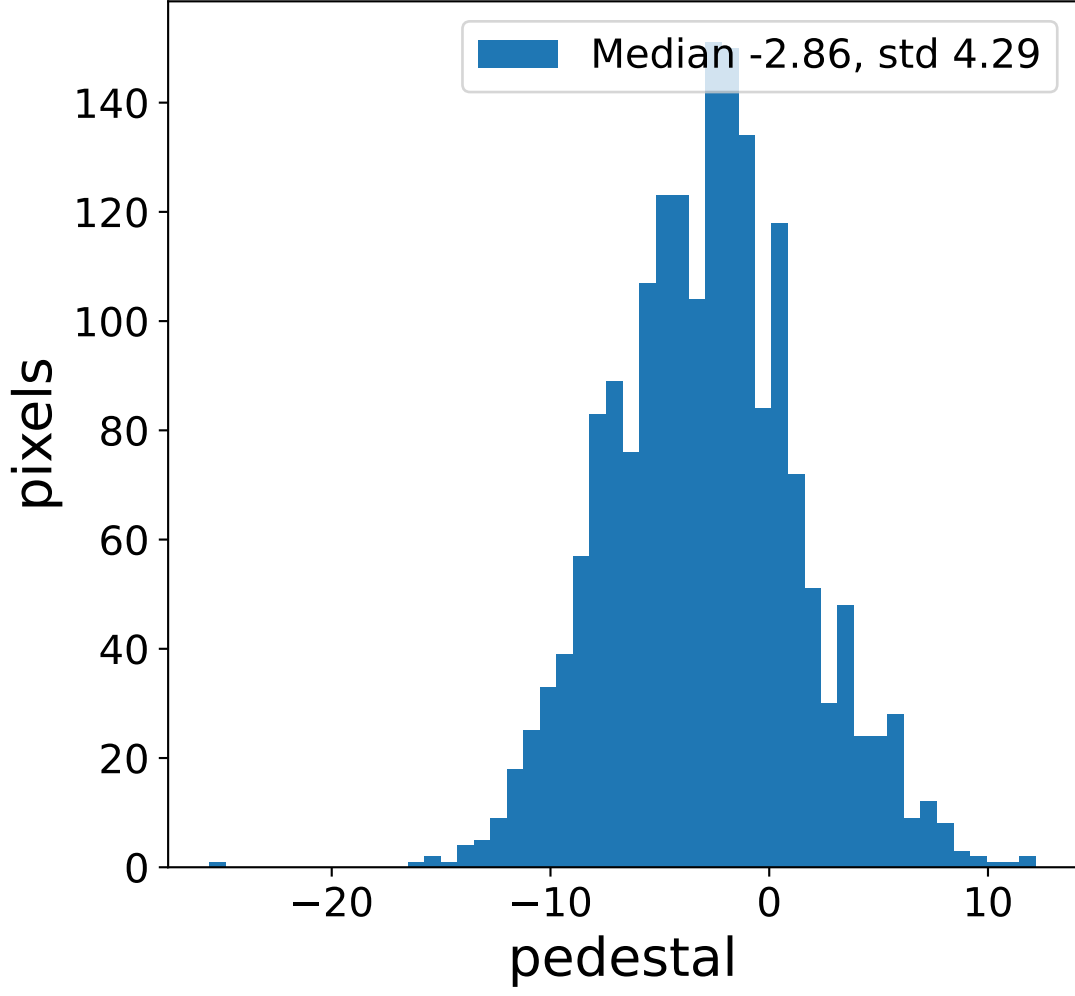


Run 4772 channel: LG

FF sample of 10000 events



pedestal sample of 10000 events



flat-fielded gain [ADC/pe]

