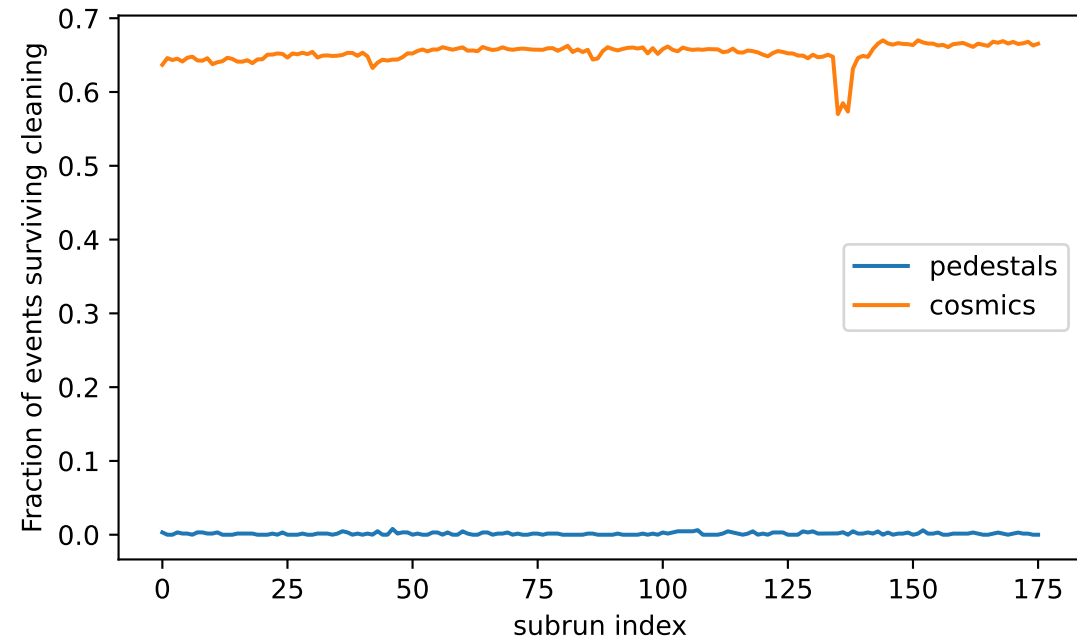
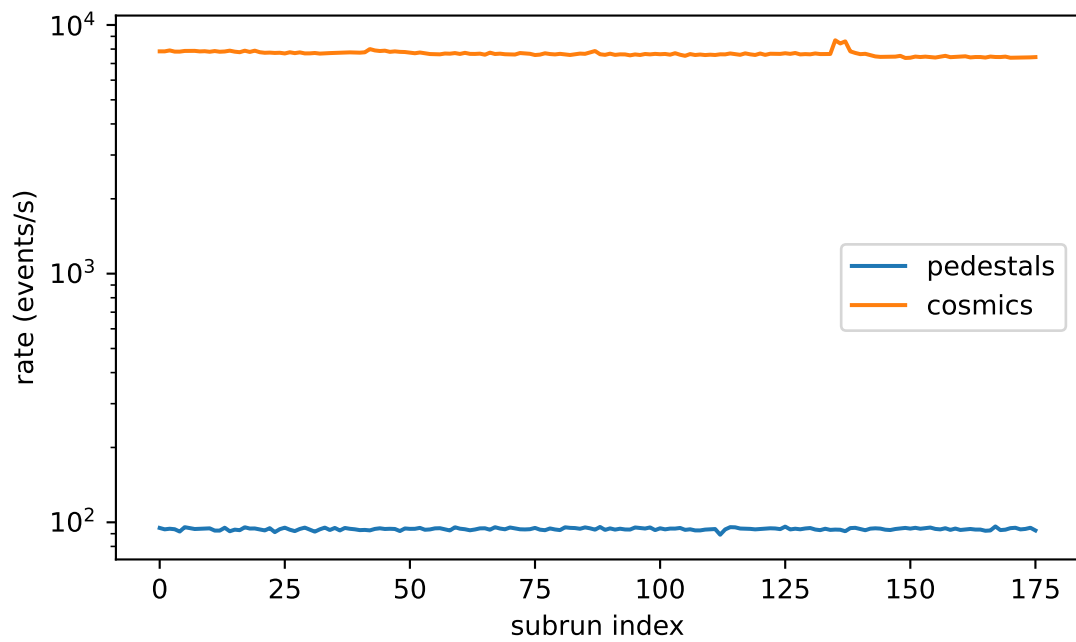
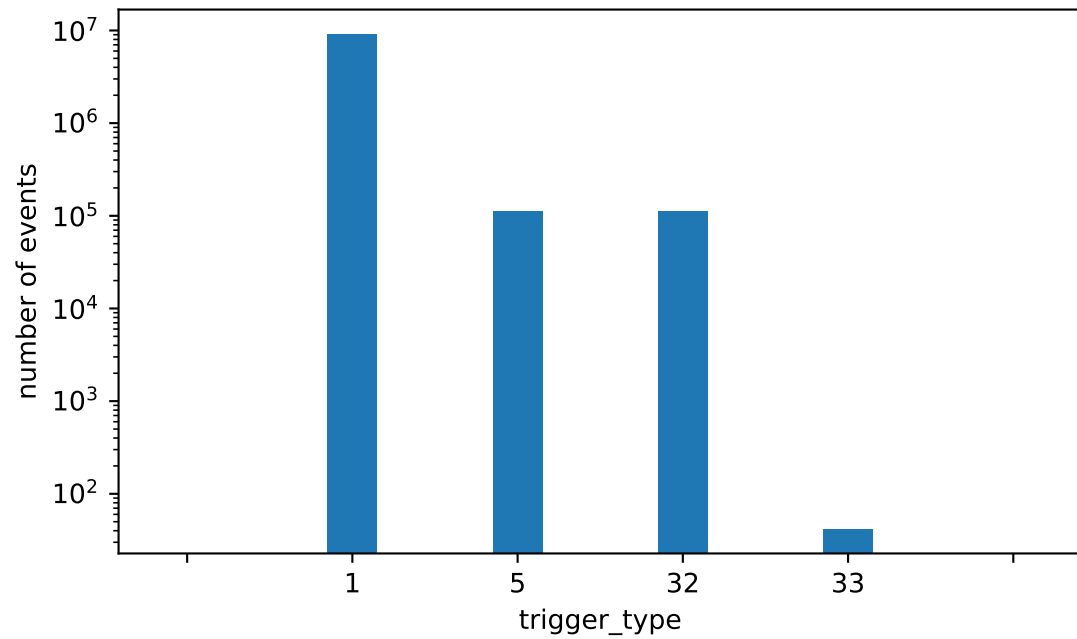
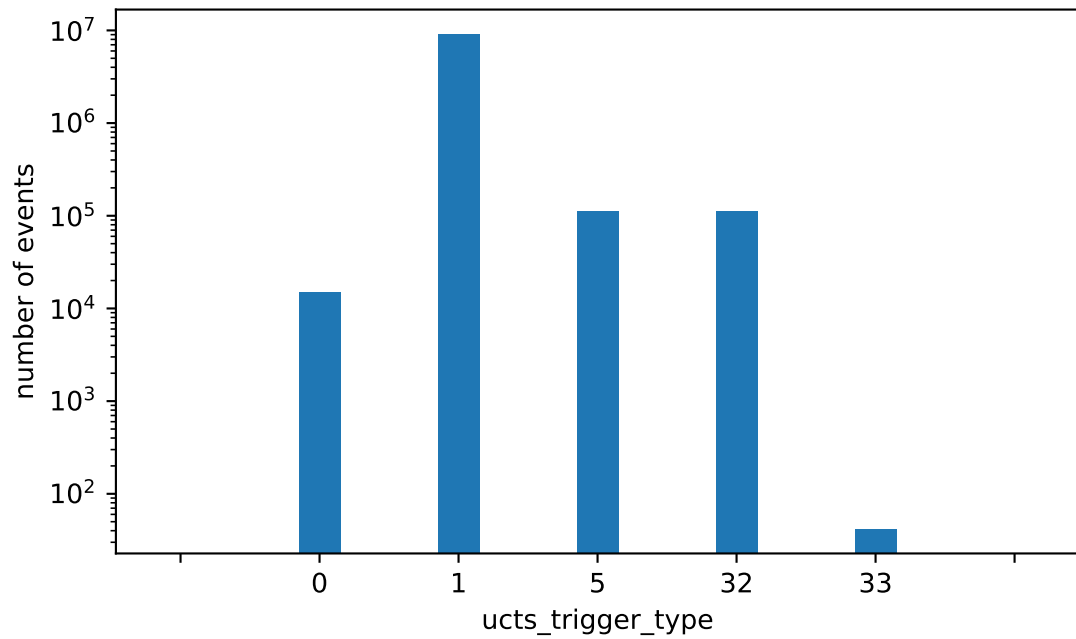


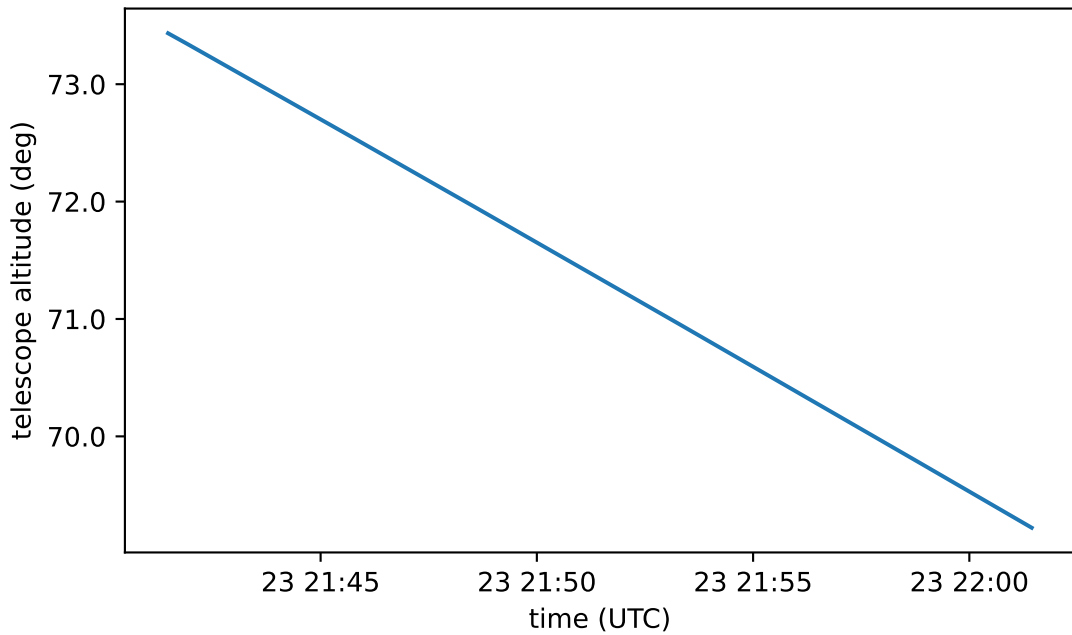
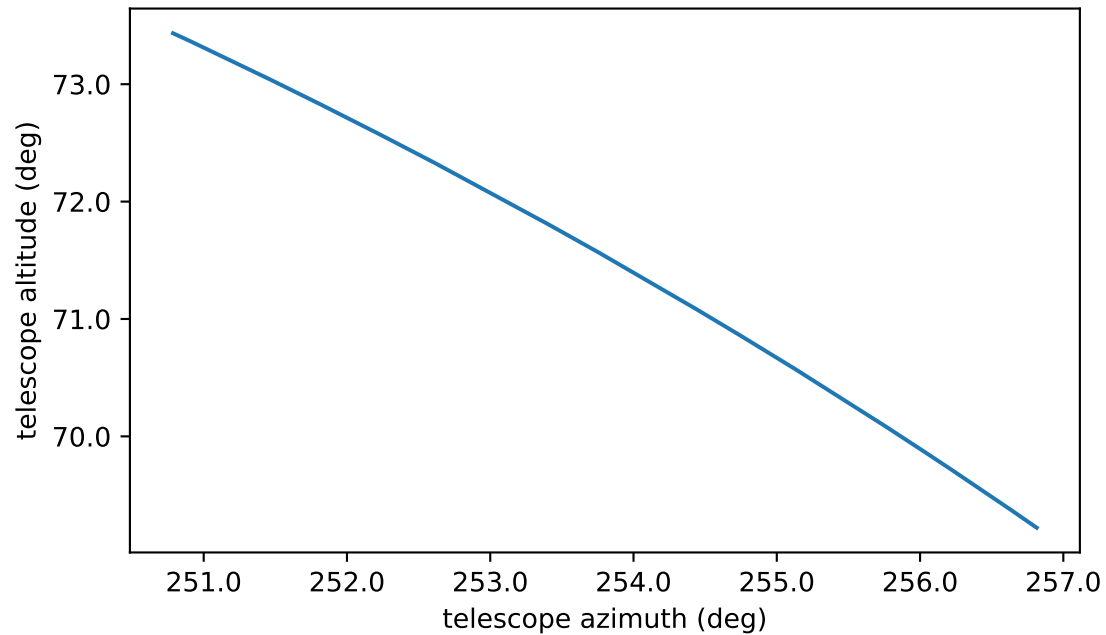
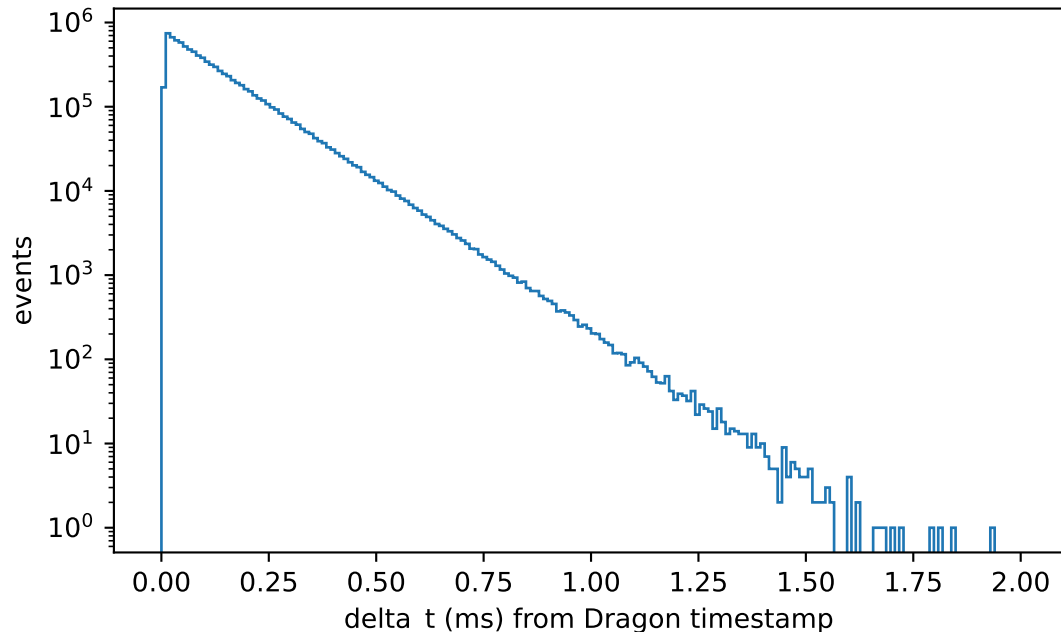
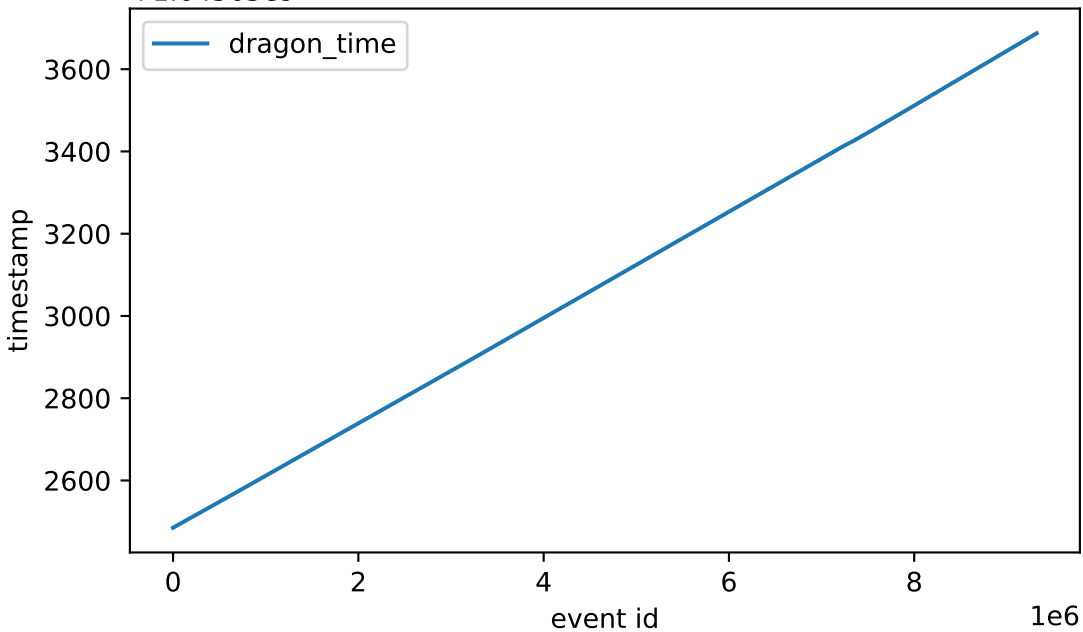
datacheck_dl1_LST-1.Run07097.h5

First shower event UTC:

(from Dragon time): 2022-02-23 21:41:25.102559

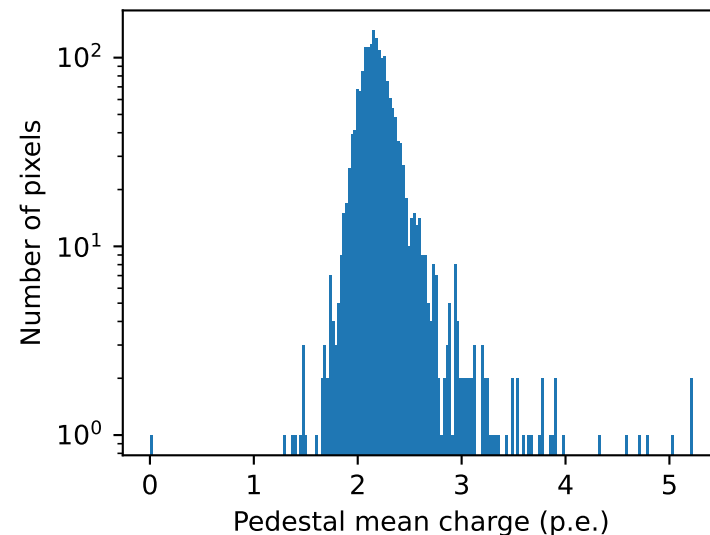
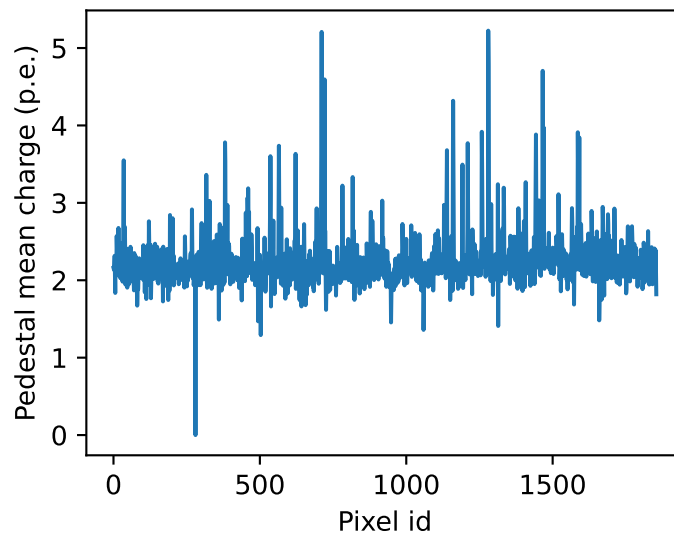
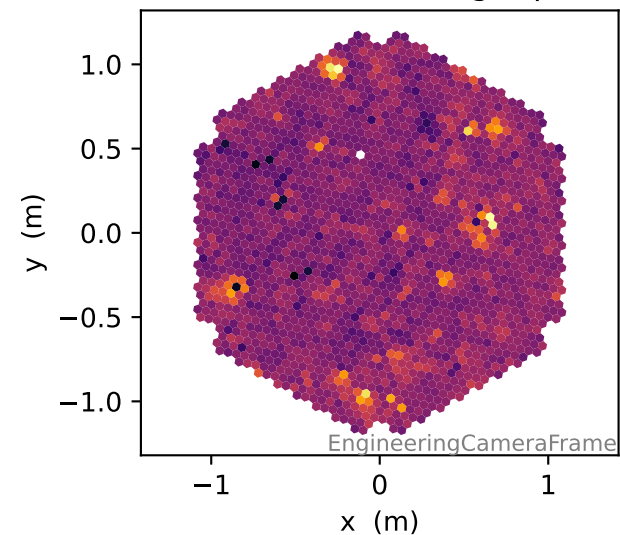


+1.64565e9

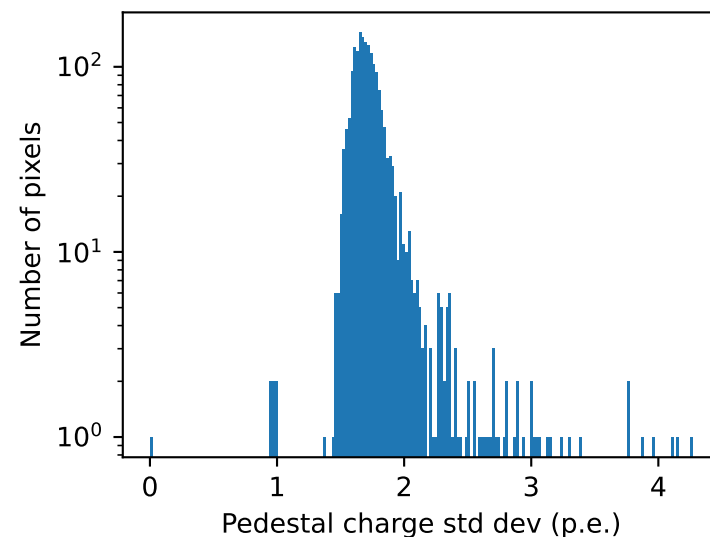
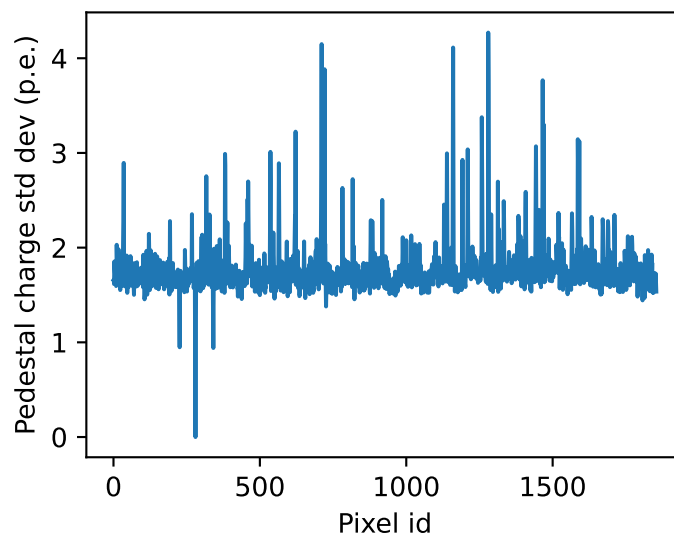
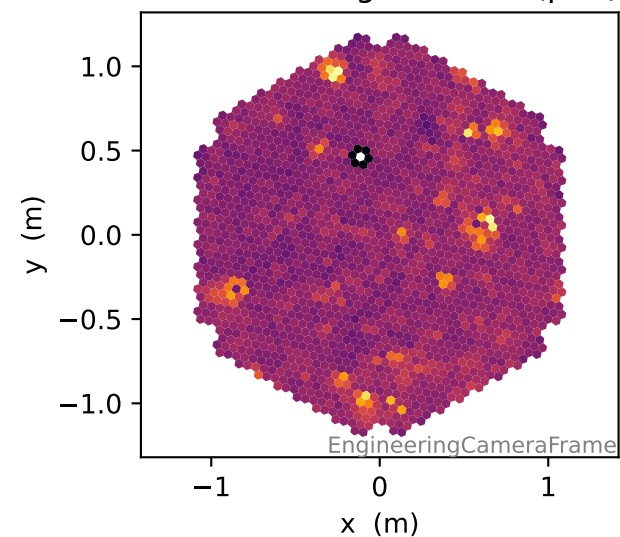


PEDESTALS, pixel-wise charge info

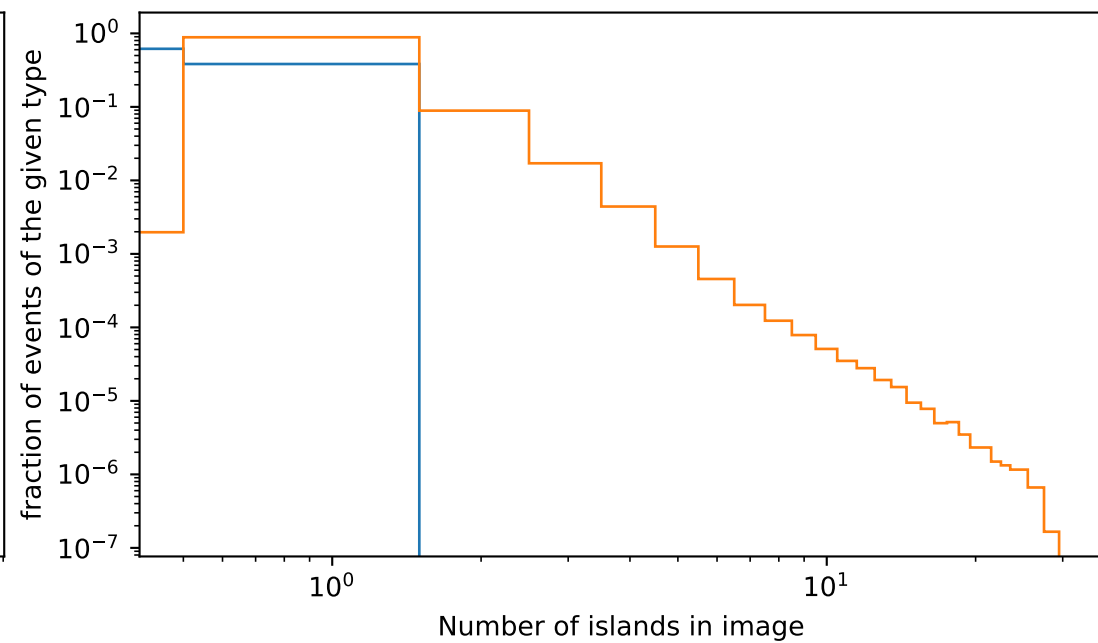
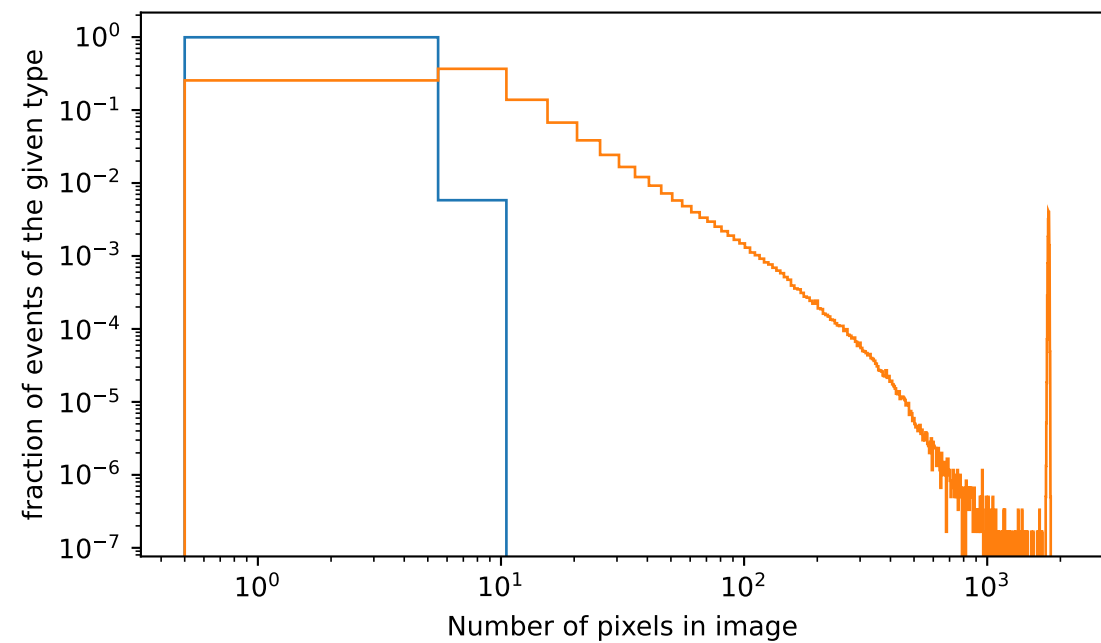
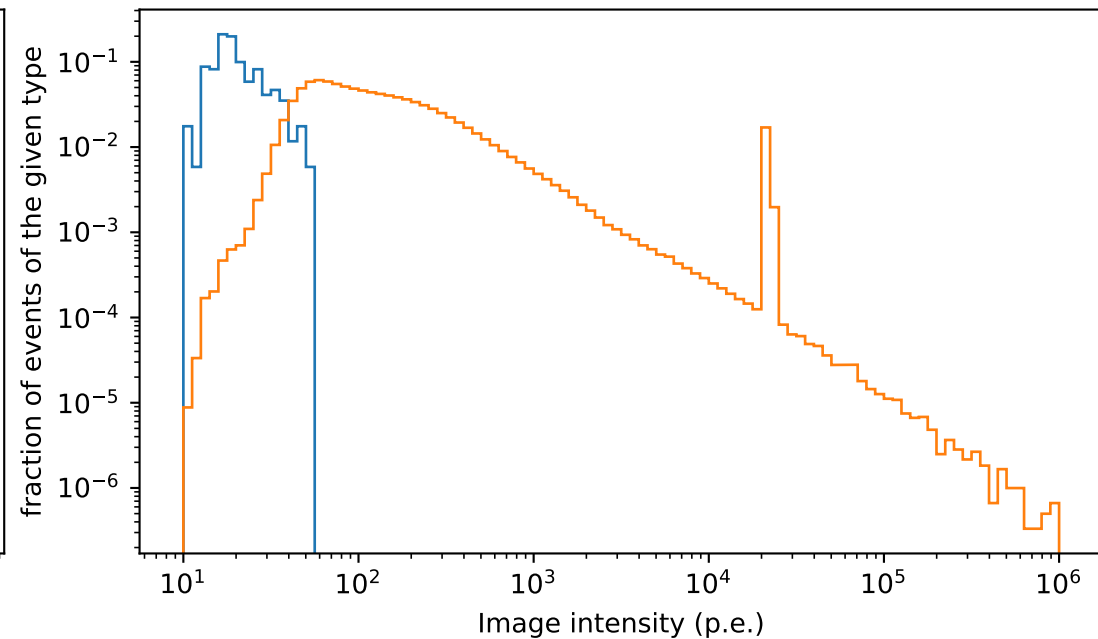
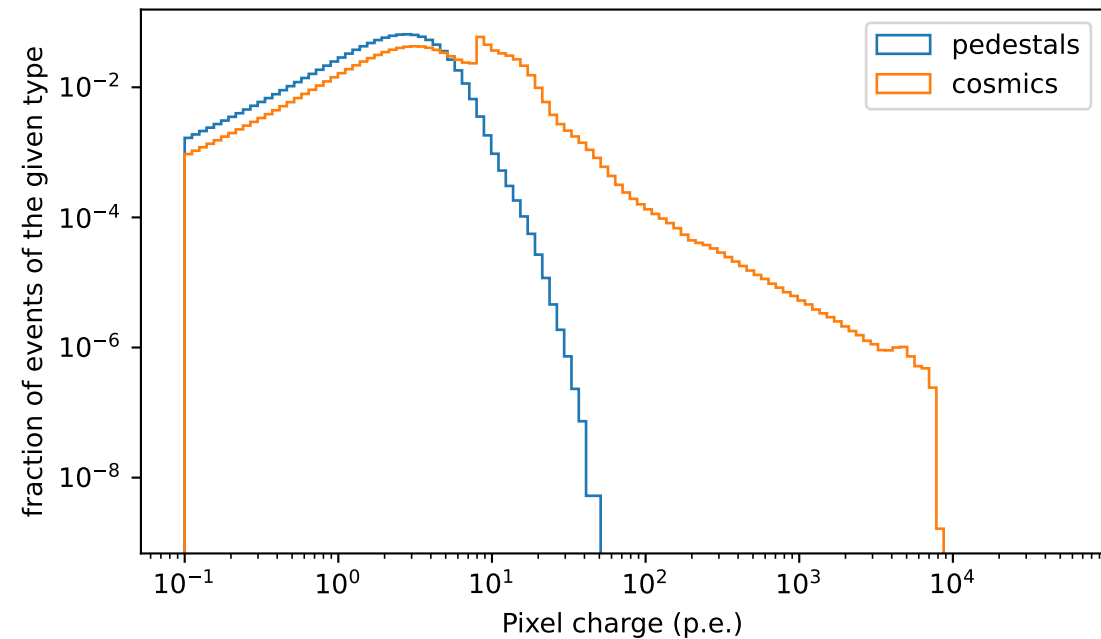
Pedestal mean charge (p.e.)



Pedestal charge std dev (p.e.)

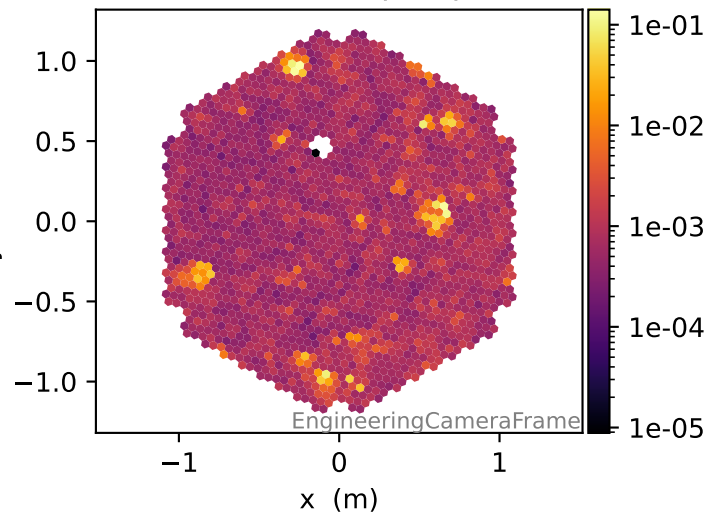


Sorry, no flatfield to plot here!

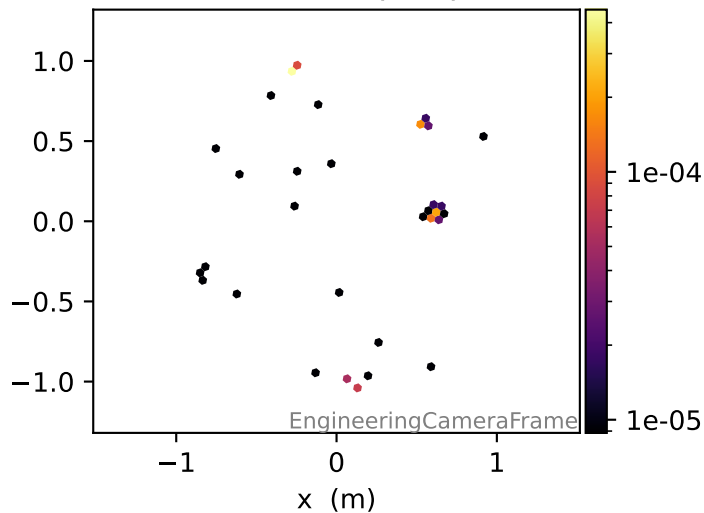


PEDESTALS, relative frequency of pixel charges

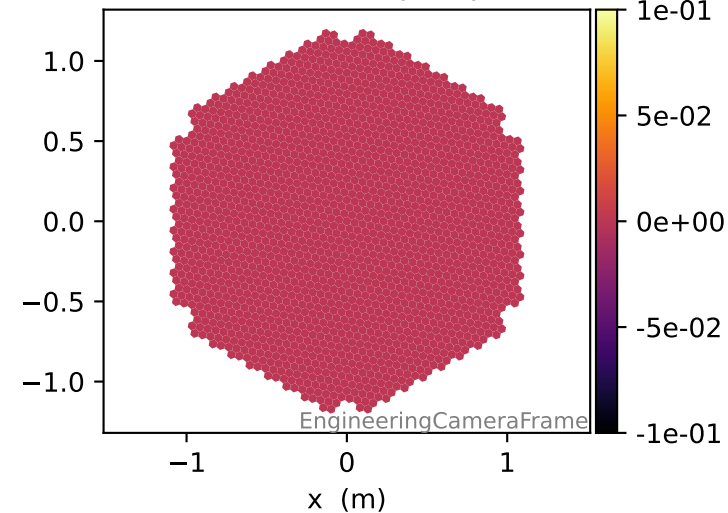
Fraction of >10 p.e. pulses



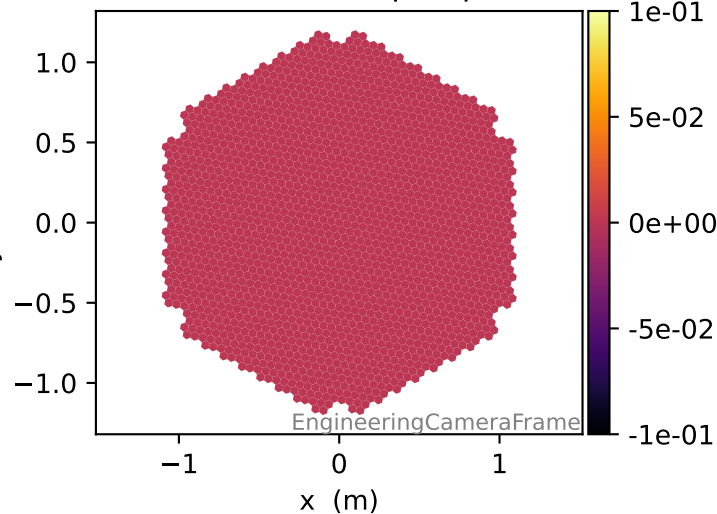
Fraction of >30 p.e. pulses



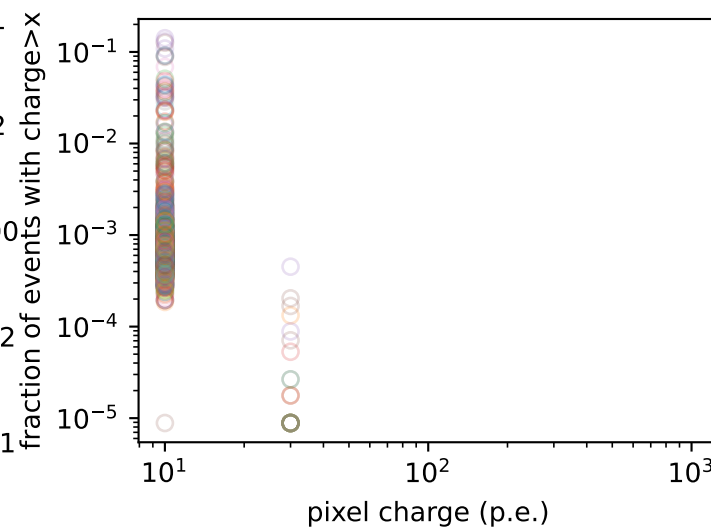
Fraction of >100 p.e. pulses



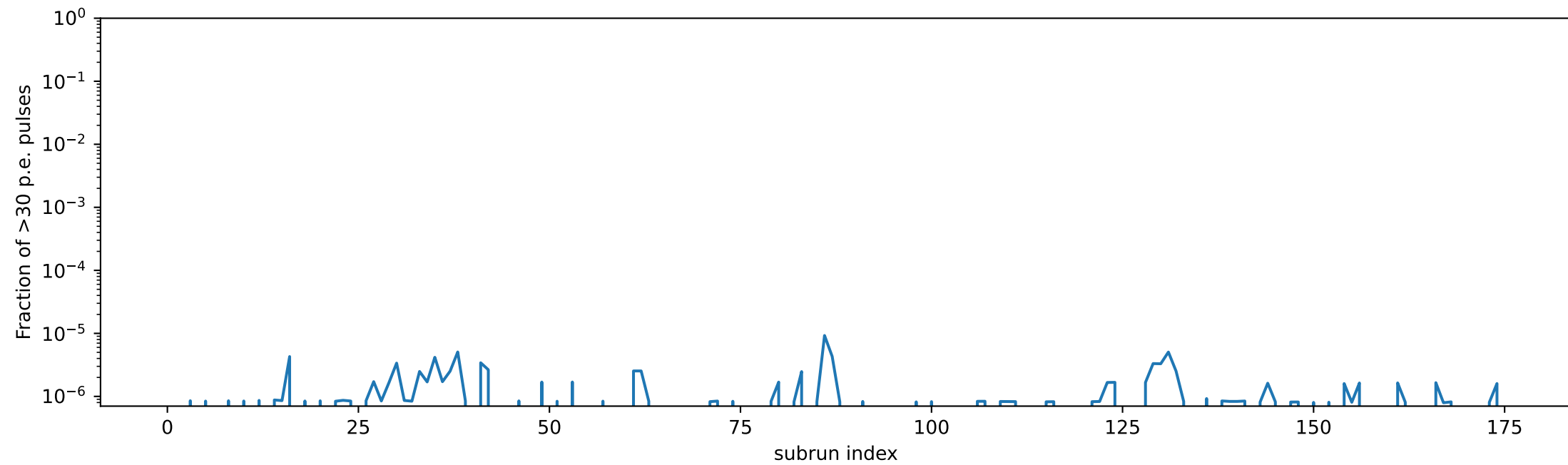
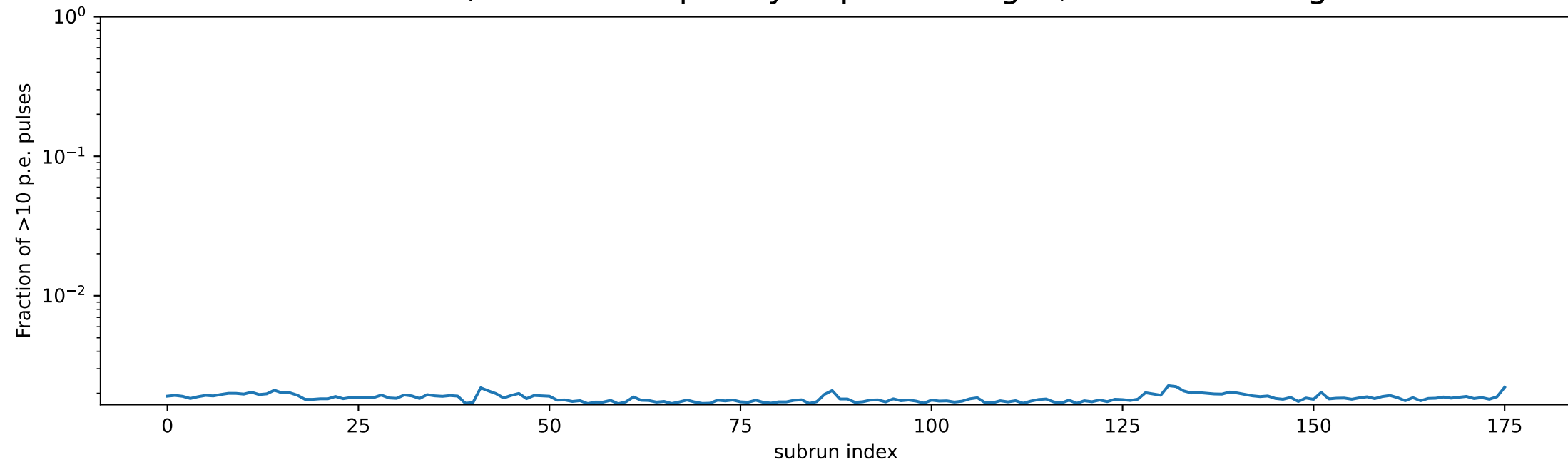
Fraction of >300 p.e. pulses



Fraction of >1000 p.e. pulses

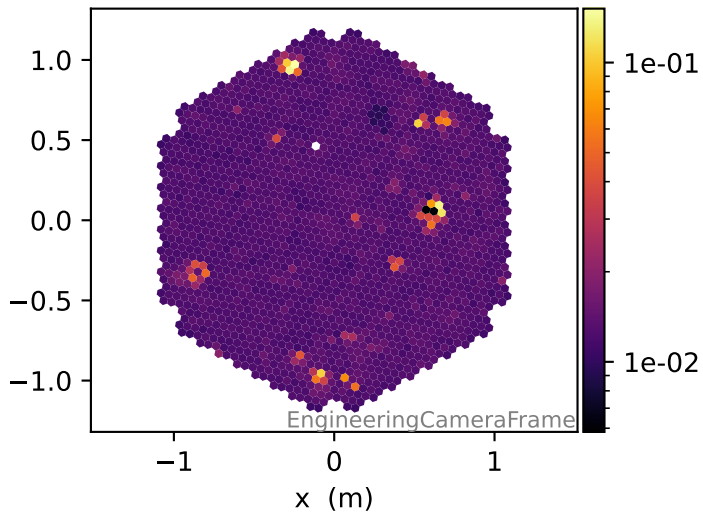


PEDESTALS, relative frequency of pixel charges, camera averages

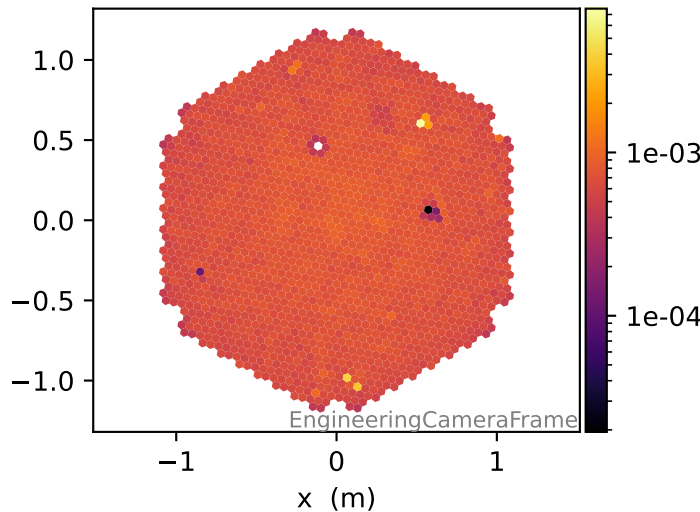


COSMICS, relative frequency of pixel charges

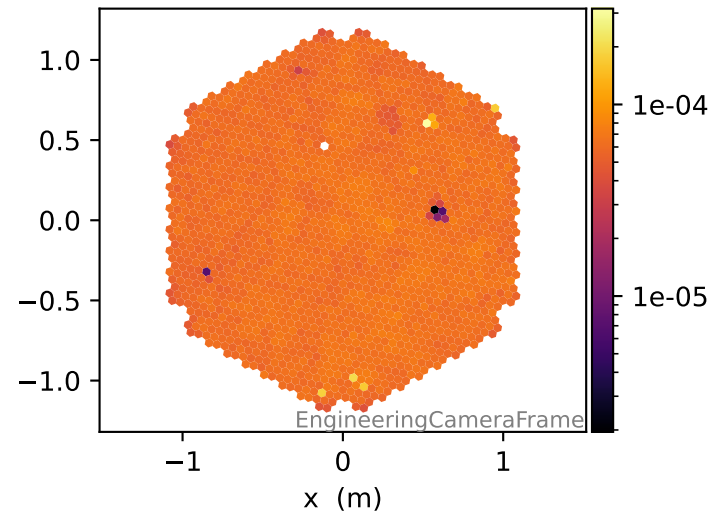
Fraction of >10 p.e. pulses



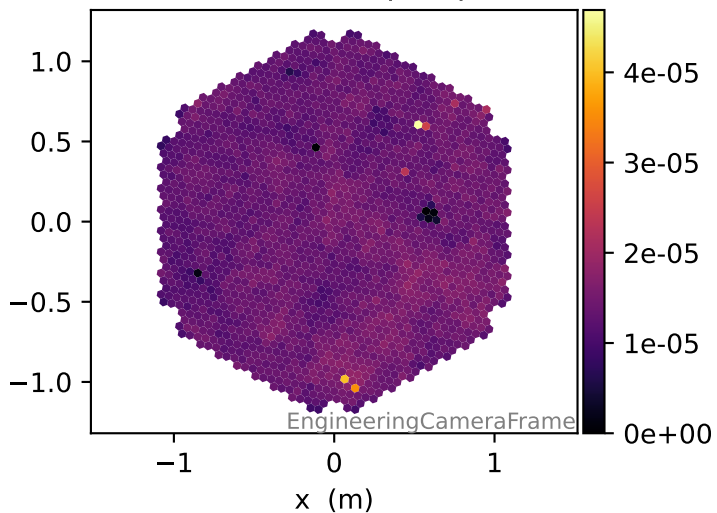
Fraction of >30 p.e. pulses



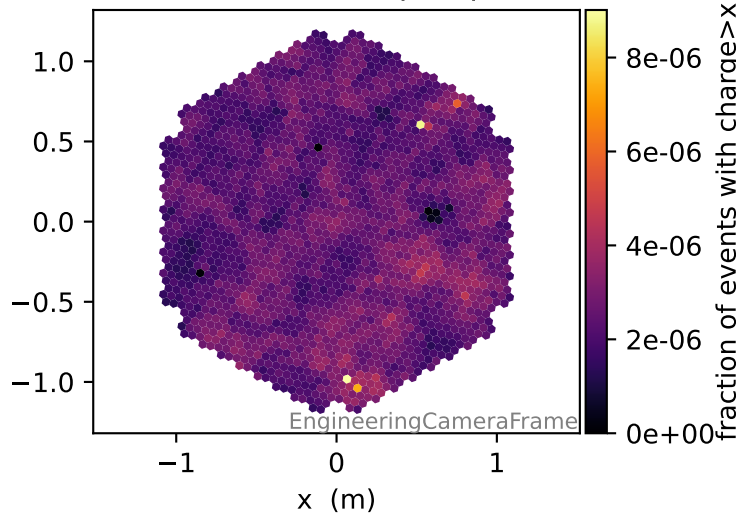
Fraction of >100 p.e. pulses



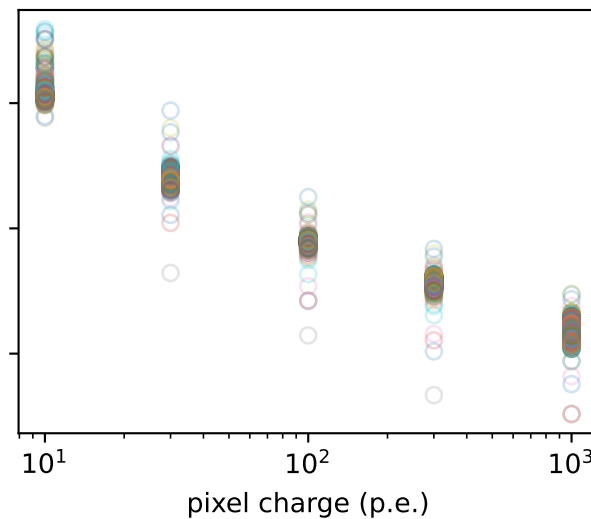
Fraction of >300 p.e. pulses



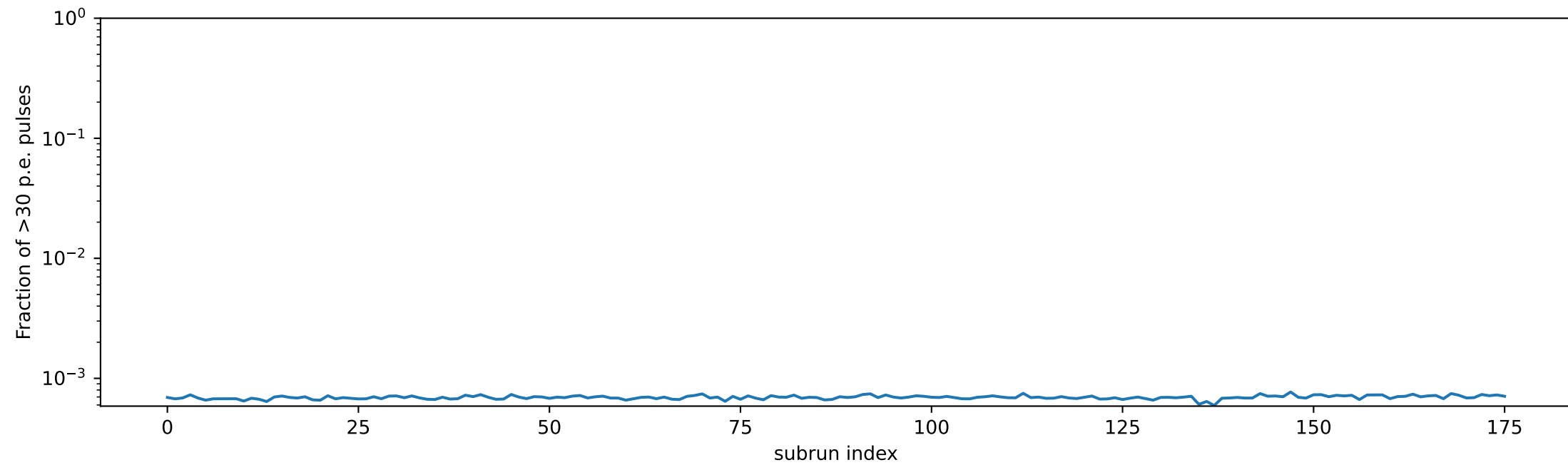
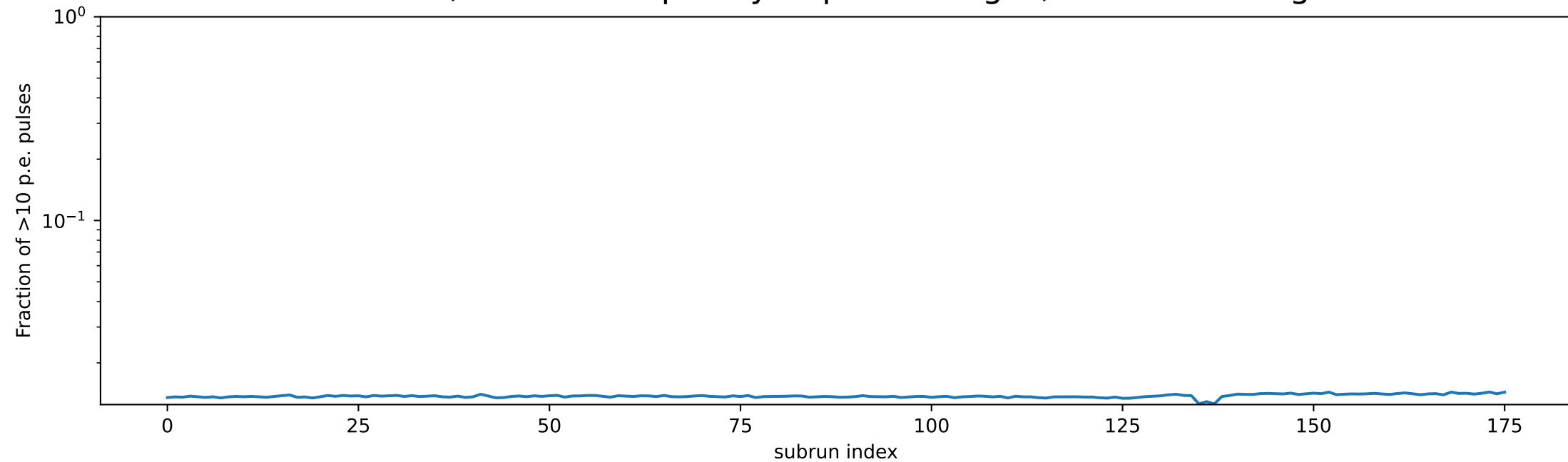
Fraction of >1000 p.e. pulses



fraction of events with charge $>x$



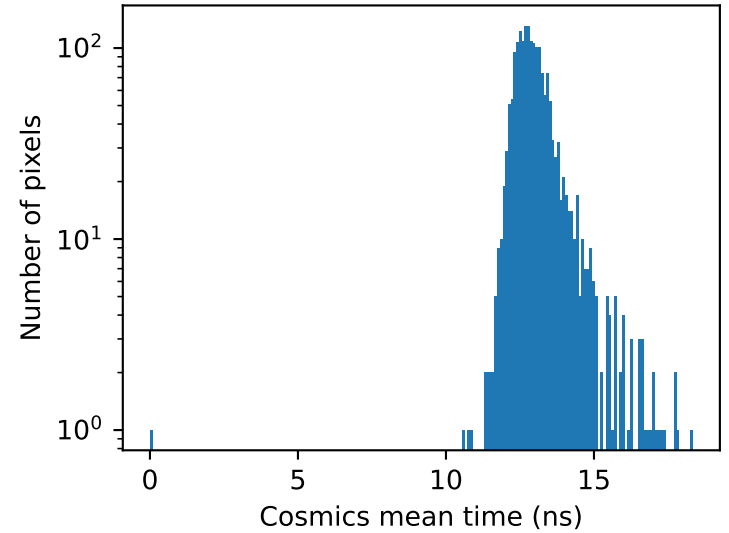
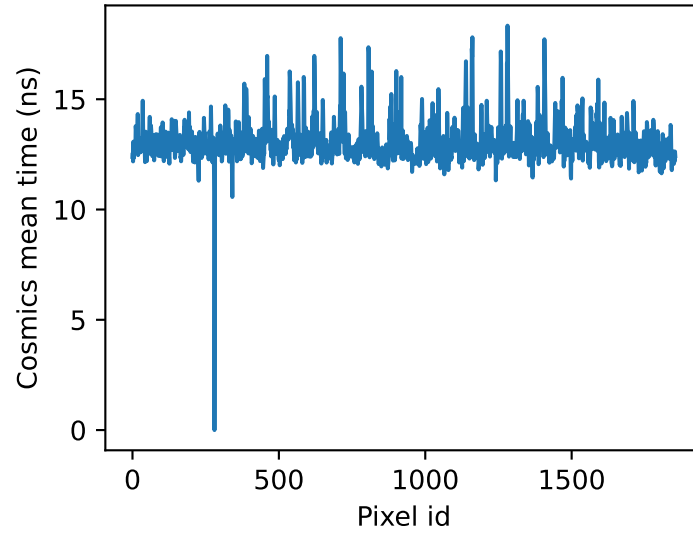
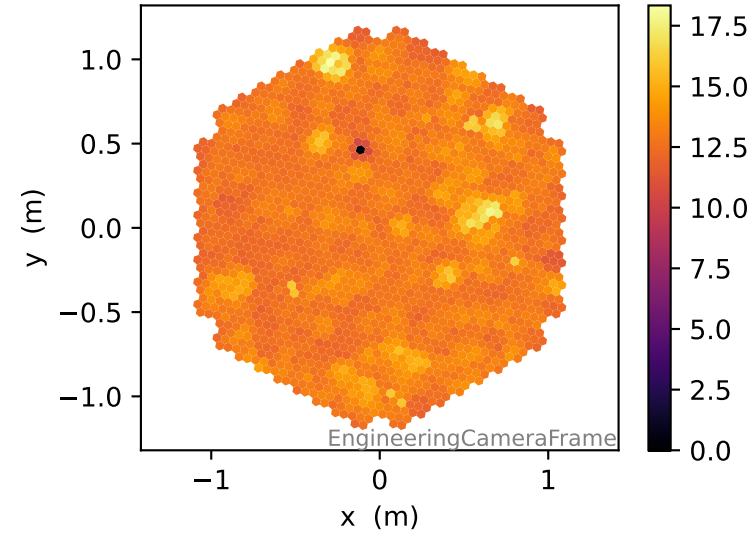
COSMICS, relative frequency of pixel charges, camera averages



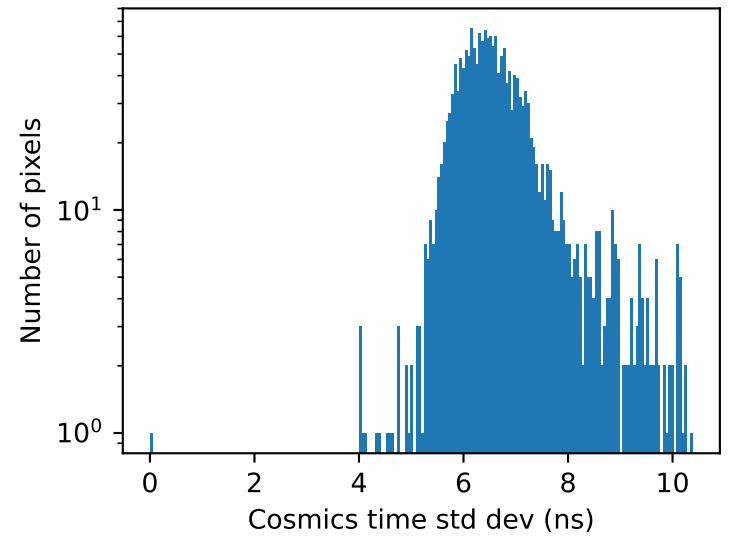
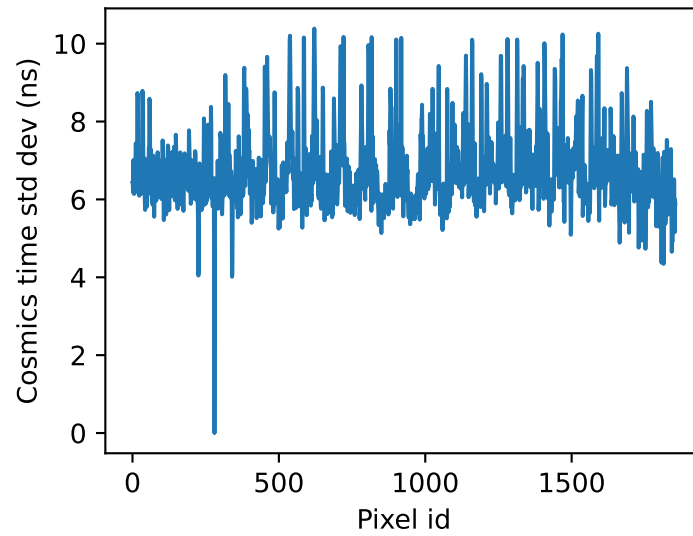
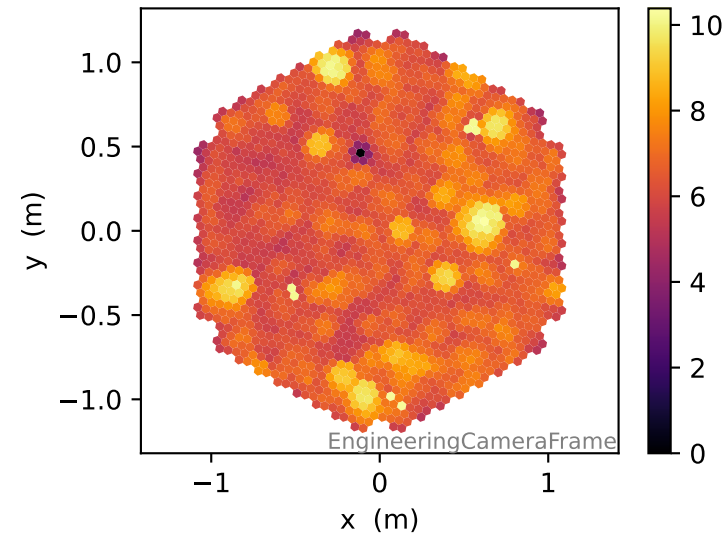
Sorry, no flatfield to plot here!

COSMICS, pixel-wise pulse time info for pixel charge > 1 p.e.

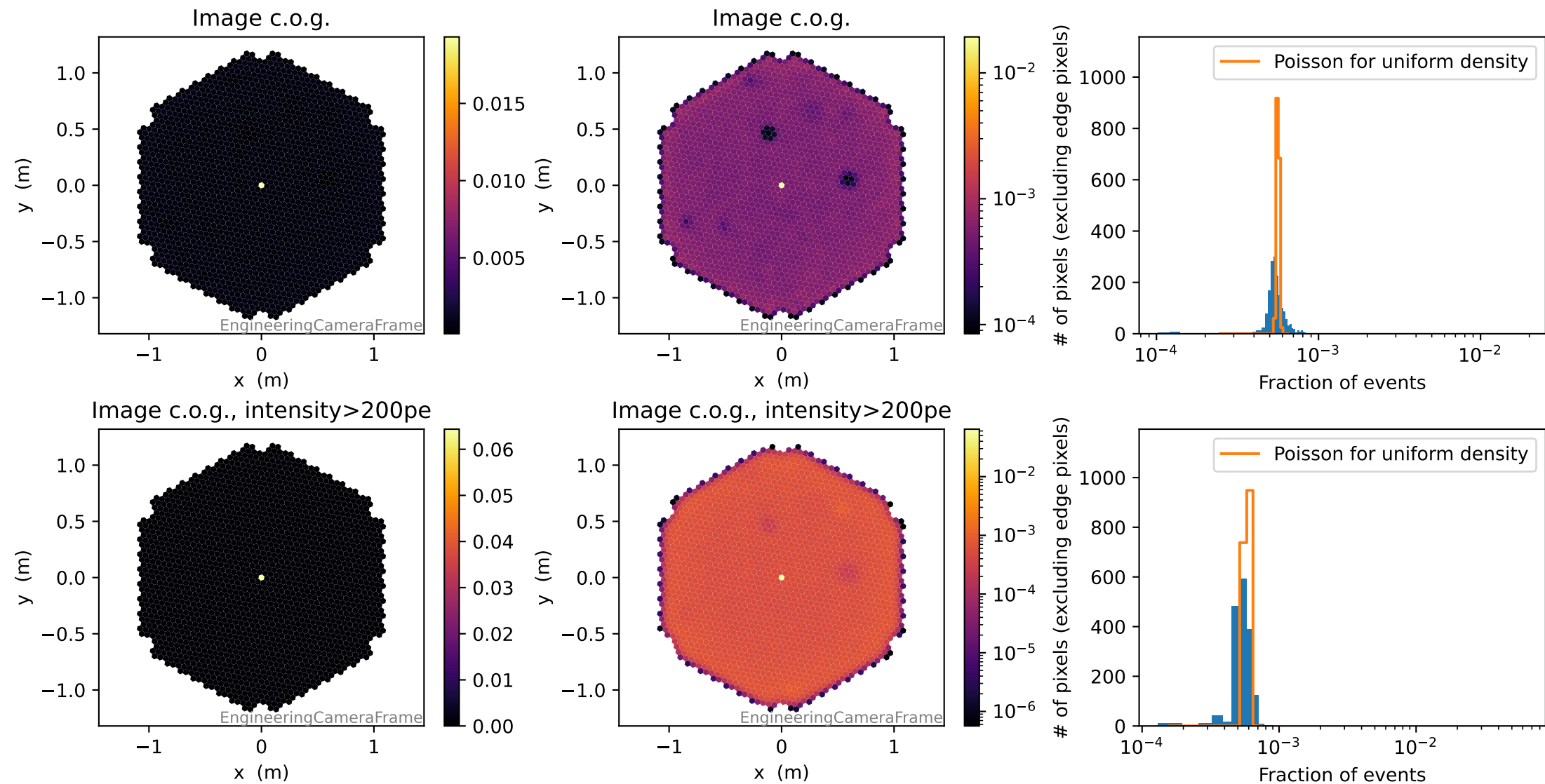
Cosmics mean time (ns)



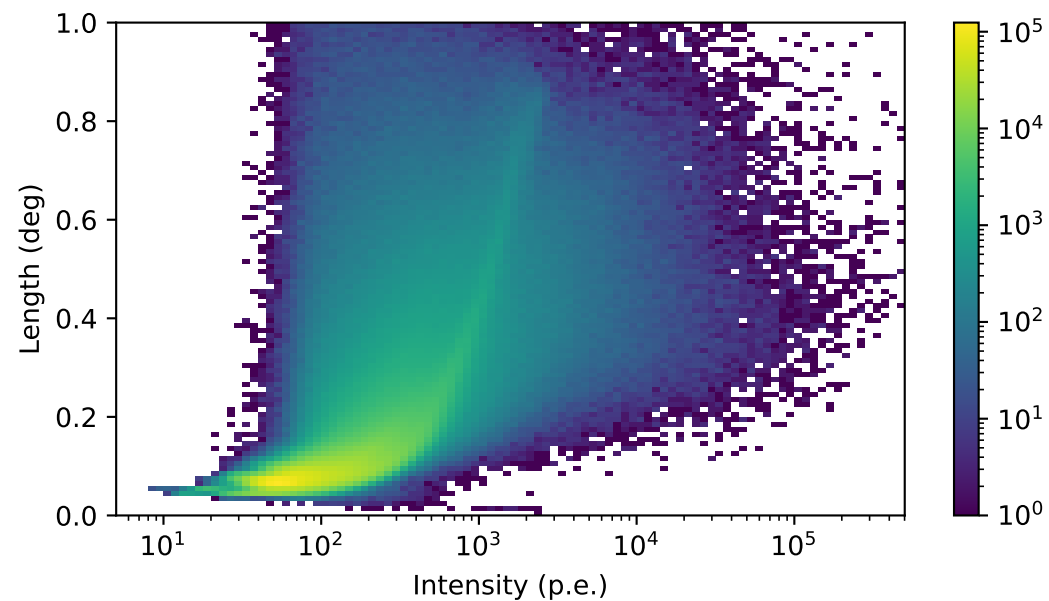
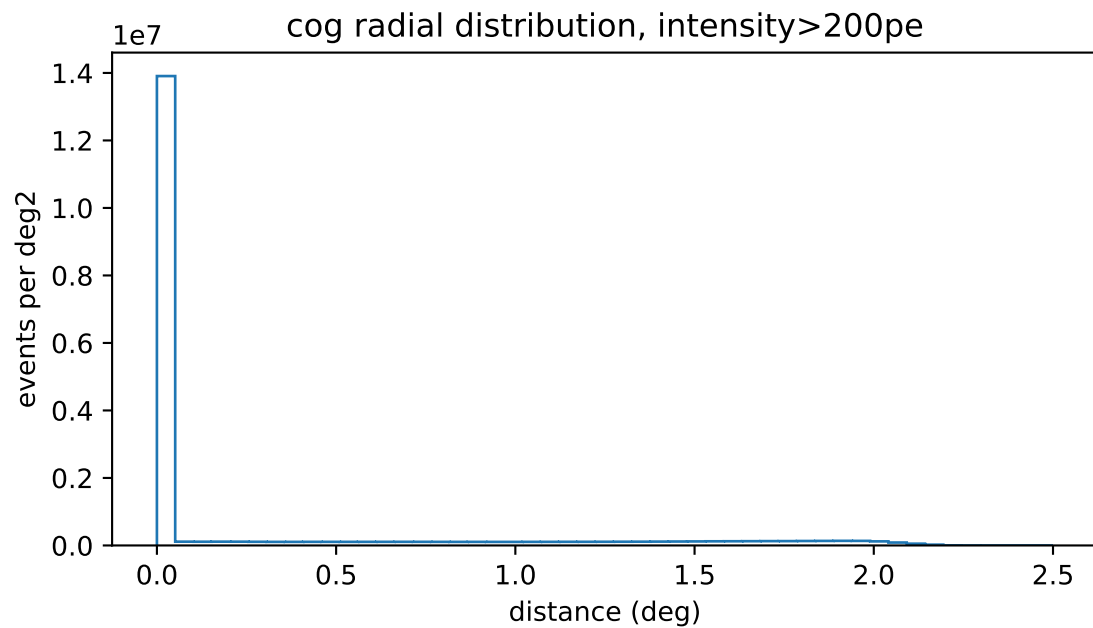
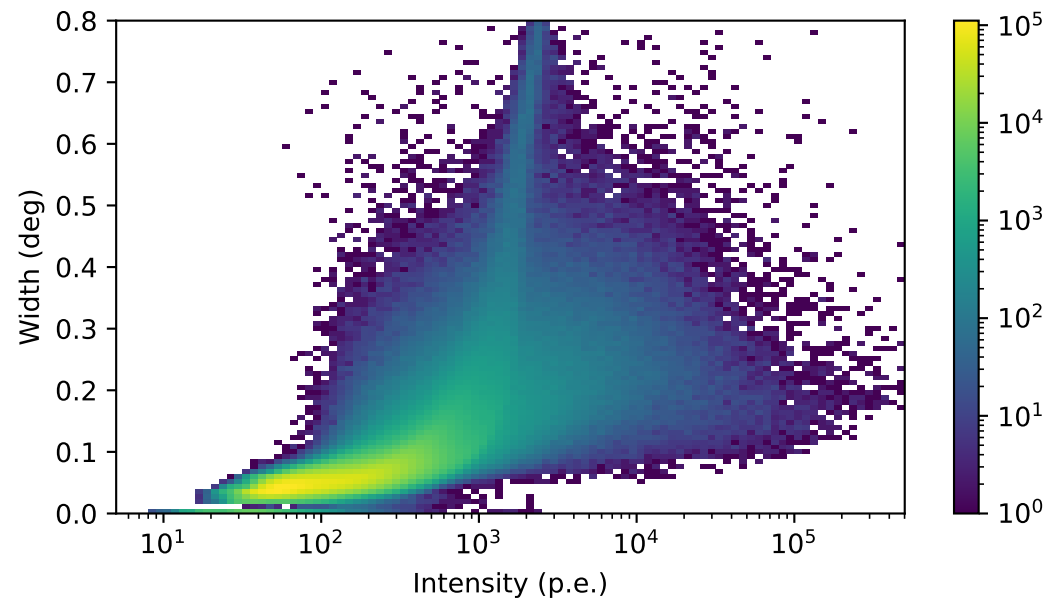
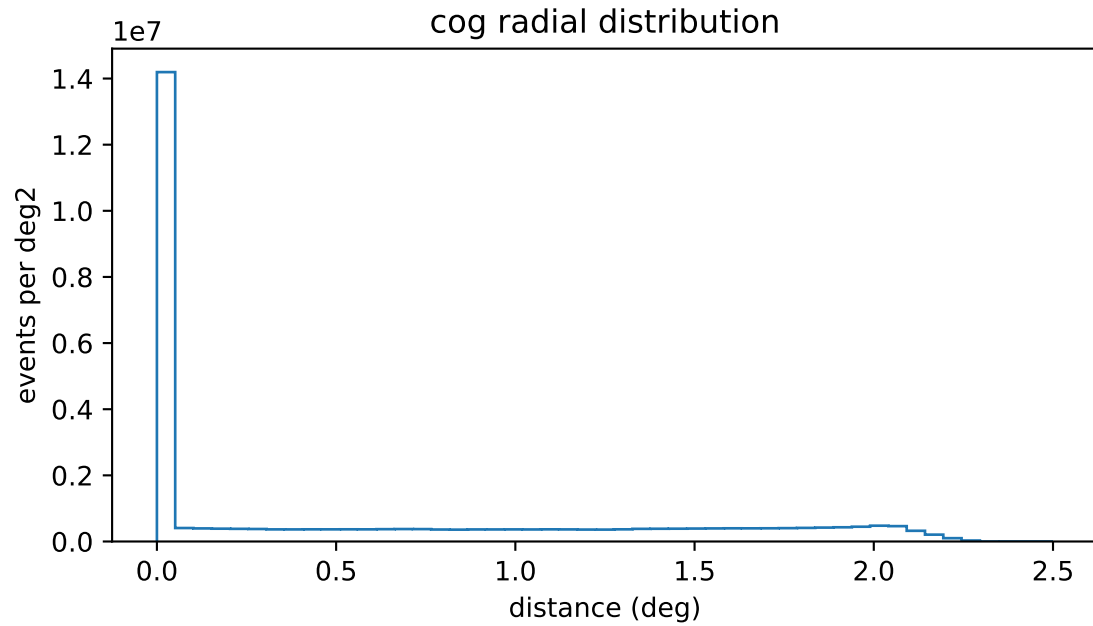
Cosmics time std dev (ns)



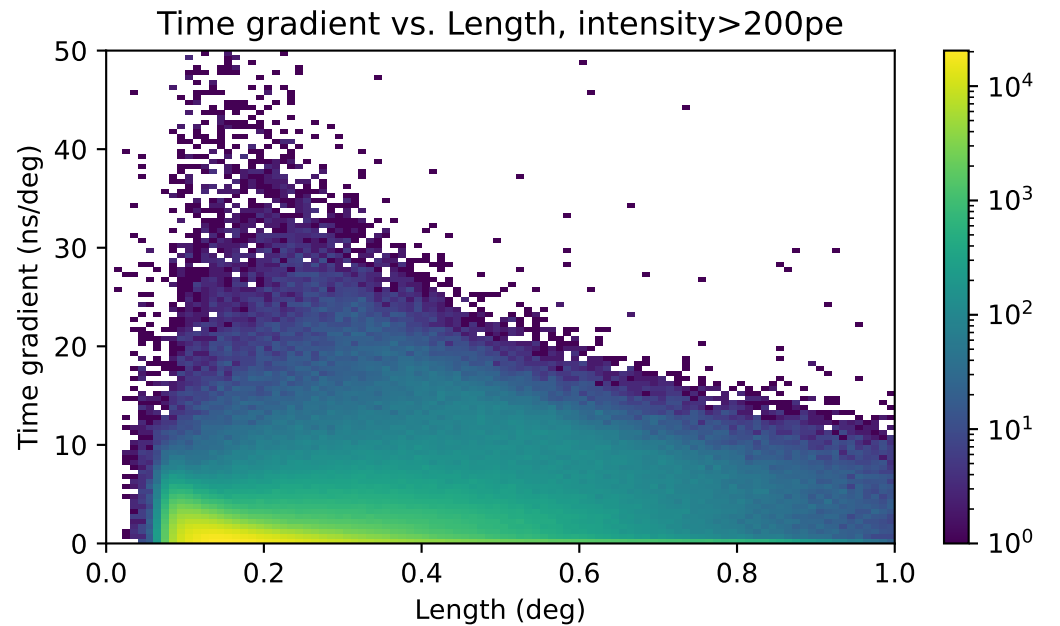
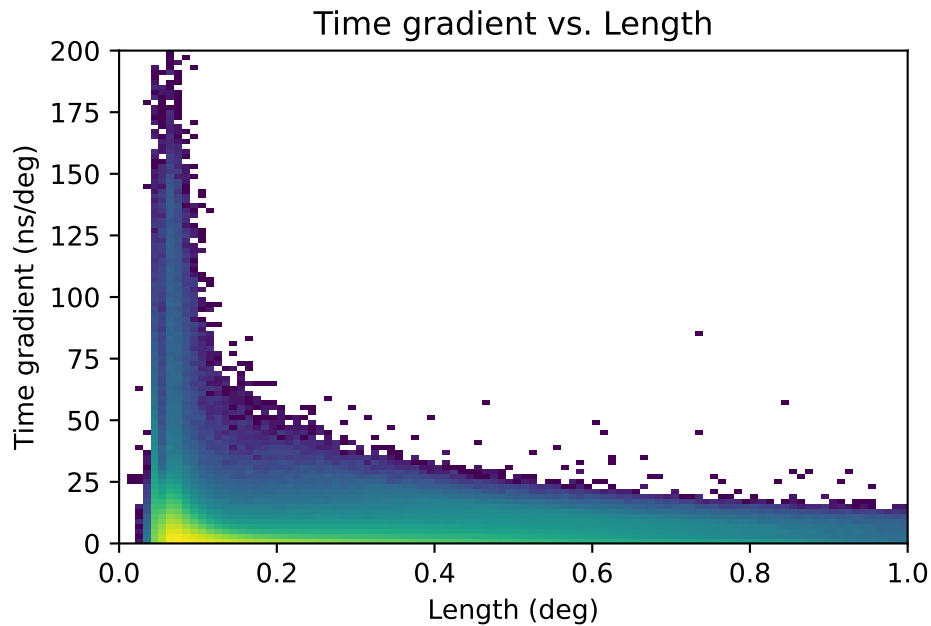
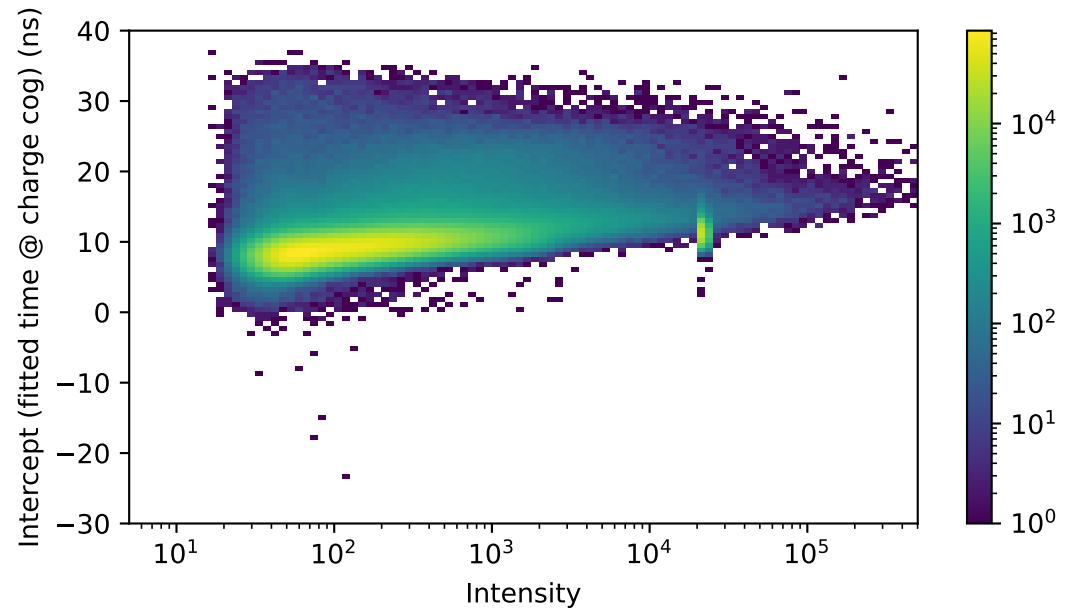
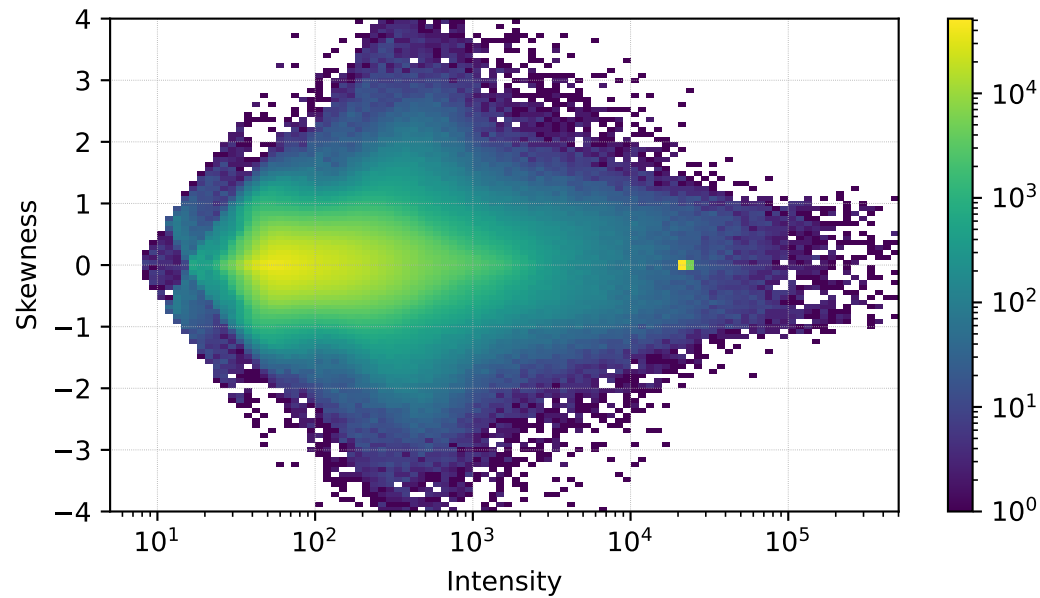
COSMICS, image c.o.g. position



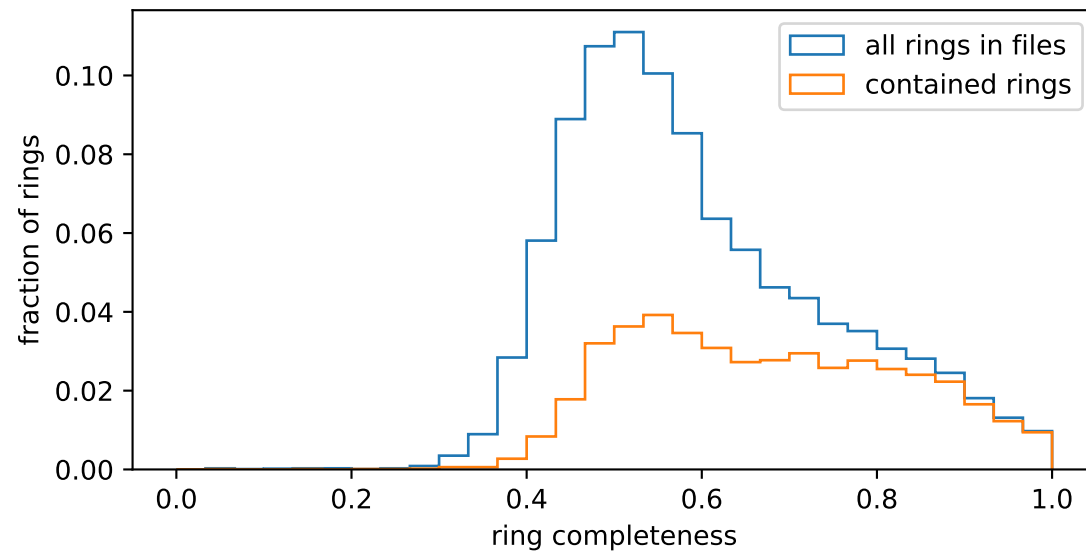
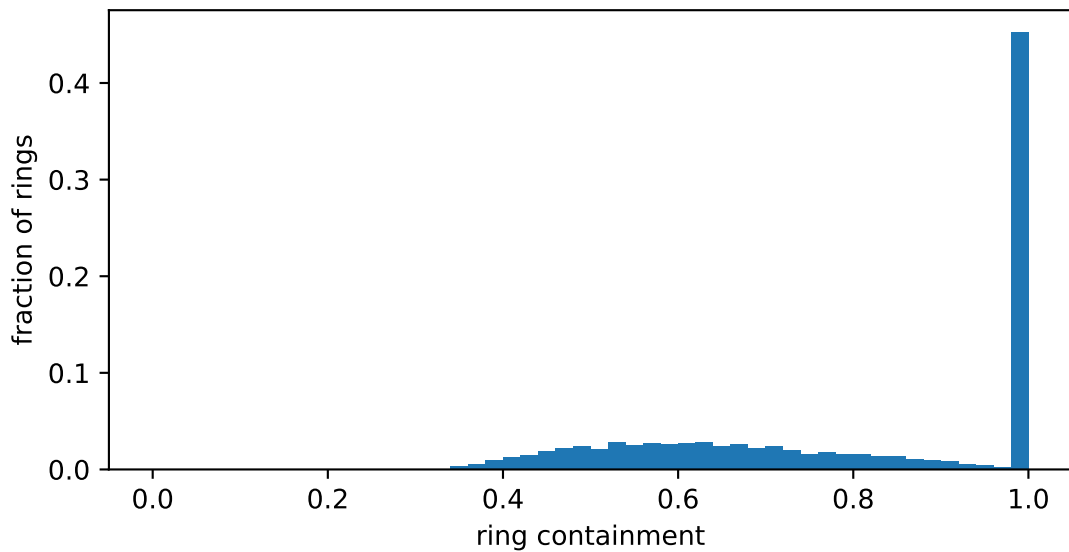
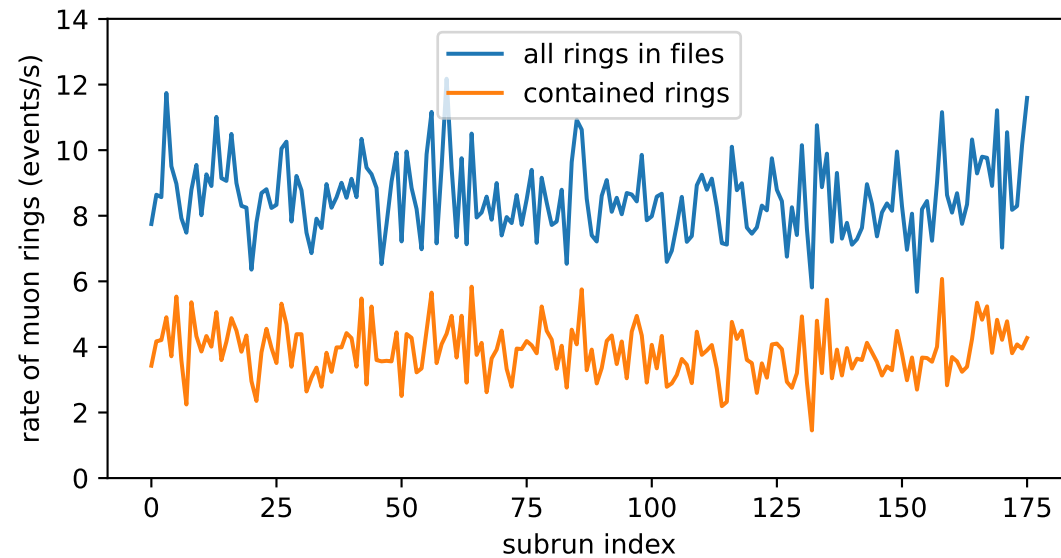
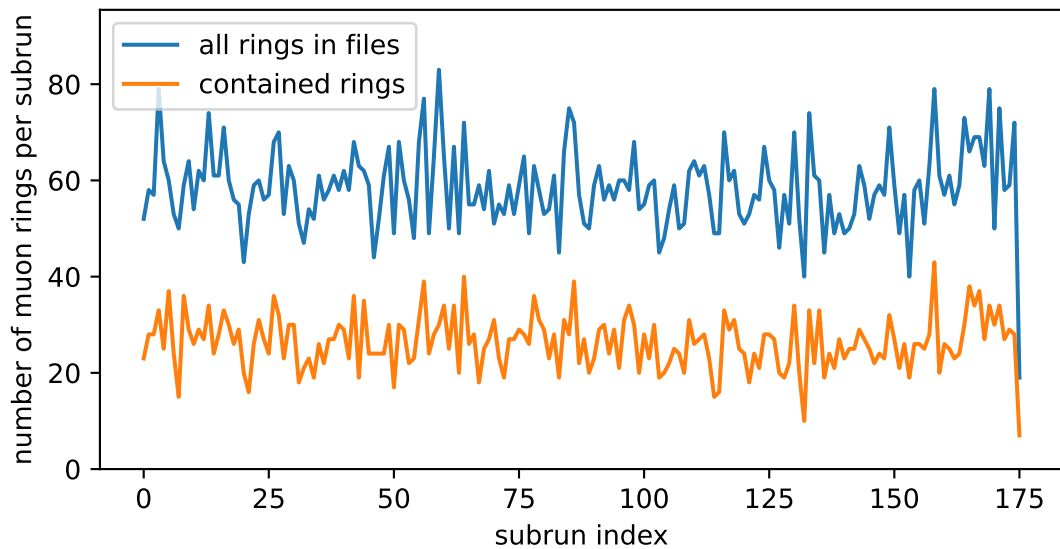
COSMICS, image parameters



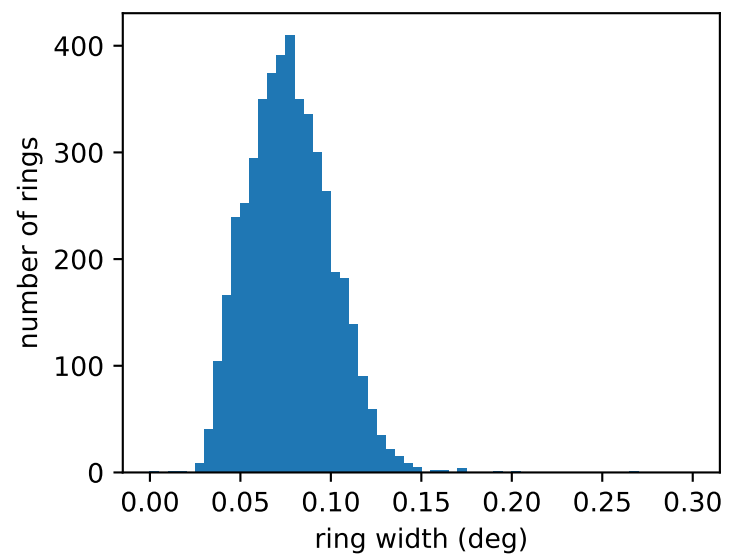
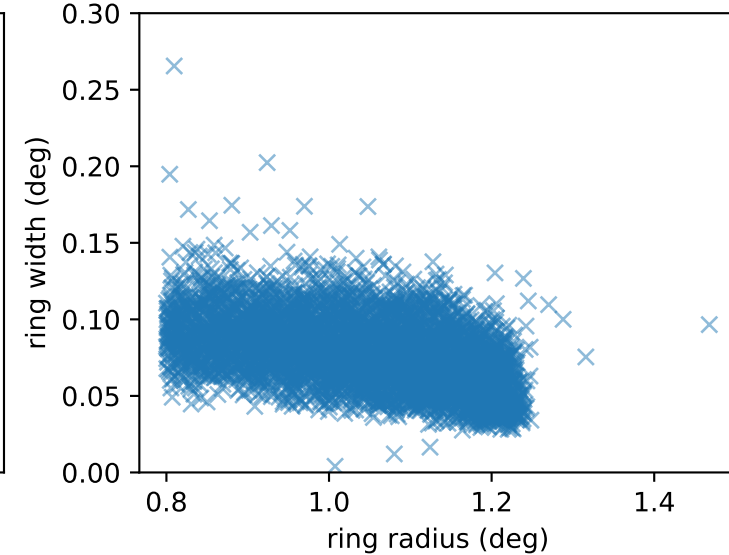
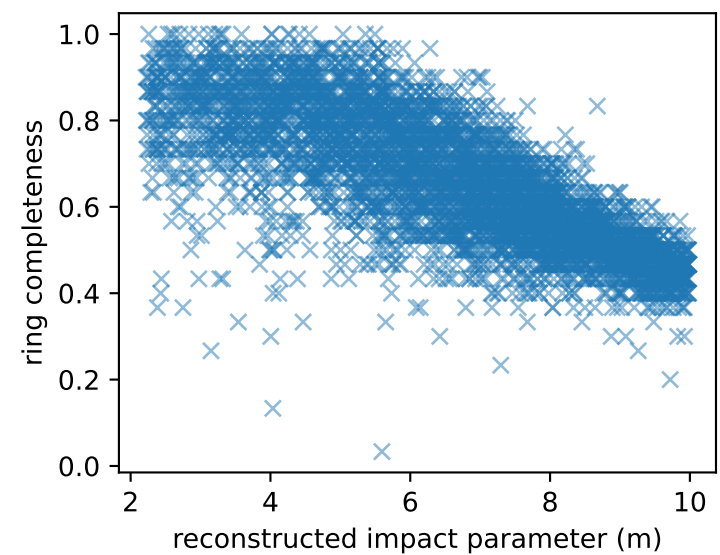
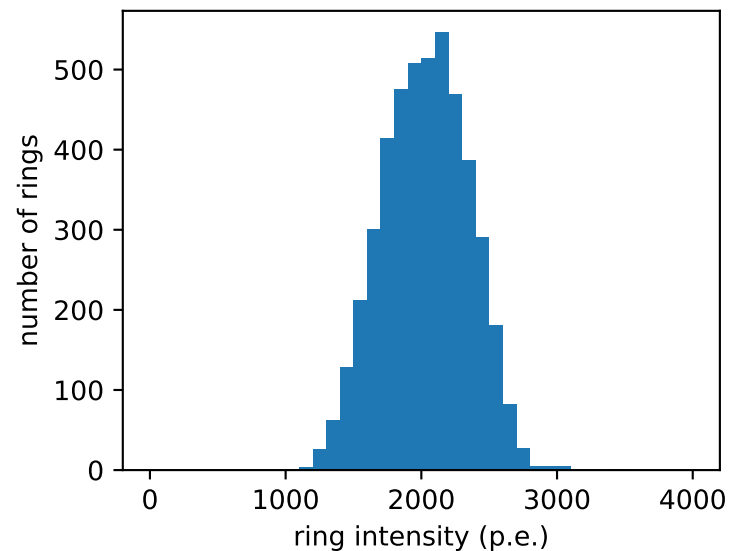
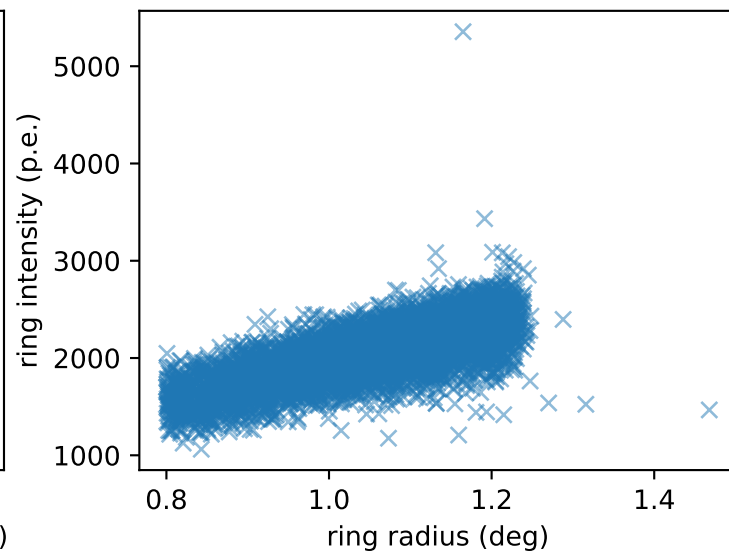
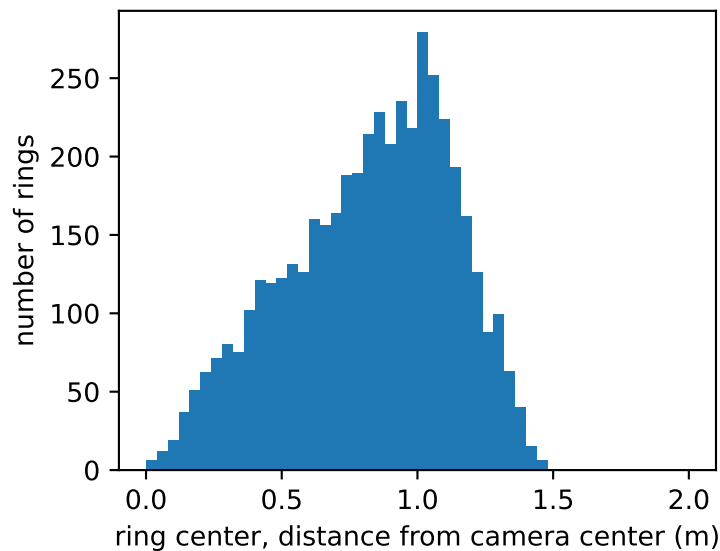
COSMICS, image parameters



MUON RINGS



MUON RINGS with containment = 1



MUON RINGS with containment = 1

